

V&V Reference Report

L2 ASCDS Version : 7.6.9

Observation 2902 - L2 Version 001
Chandra X-Ray Center

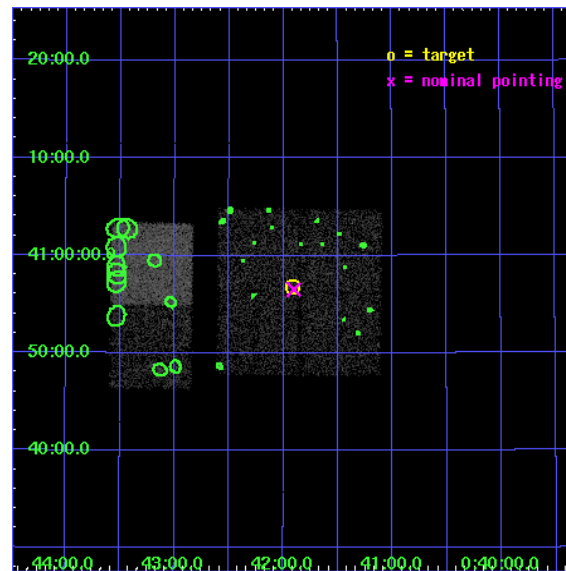
L2 Processing Date : Oct 14 2006

Contents

1	Front	2
2	OBI	3
2.1	OBI	3
2.1.1	Images	3
2.1.2	Bias	3
2.1.3	Parameters	4
2.1.4	Events	4
2.2	Compared Parameters	5
2.3	Aspect	6
2.4	Star Slots	9
2.4.1	Slot 3	9
2.4.2	Slot 4	10
2.4.3	Slot 5	11
2.4.4	Slot 6	12
2.4.5	Slot 7	13
2.5	FID Slots	14
2.5.1	Slot 0	14
2.5.2	Slot 1	15
2.5.3	Slot 2	16
3	Point Sources	17
A	Summary	18
A.1	Status	18
A.2	Comments	18

1 Front

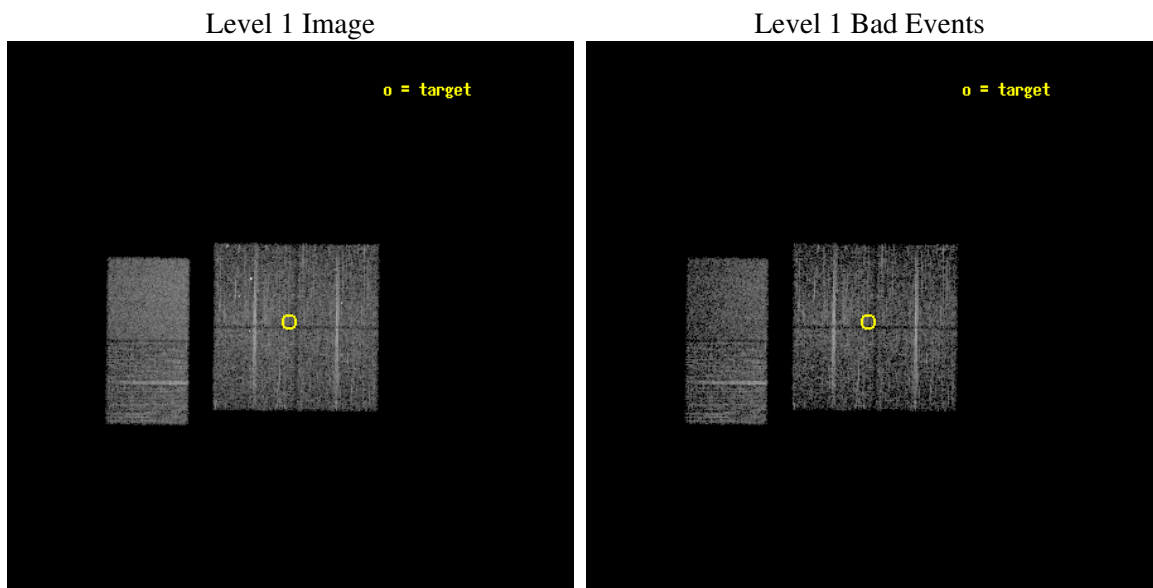
seq_num	600239
obs_id	2902
title	SEARCHING FOR X-RAY TRANSIENTS IN M31 WITH CHANDRA AND HST
observer	Dr. MICHAEL GARCIA
object	M31-T6
dtcycle	0
cycle	P
ra_targ	10.477792
dec_targ	40.946528
ra_nom	10.47560401521
dec_nom	40.942302291813
roll_nom	270.56258523741
revision	2
ontime	4755.1999822855
livetime	4694.9867768721
ontime0	4755.1999822855
ontime1	4755.1999822855
ontime2	4755.1999822855
ontime3	4755.1999822855
ontime6	4755.1265622079
ontime7	4755.1676022112
l2events	31937



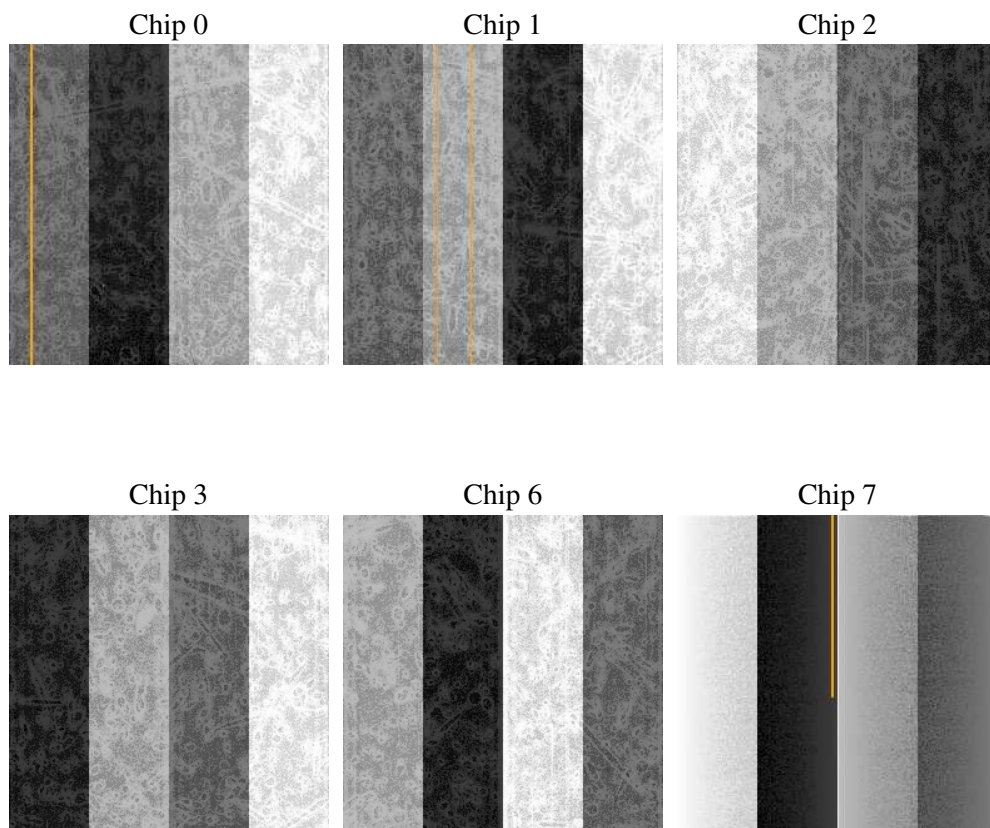
2 OBI

2.1 OBI

2.1.1 Images



2.1.2 Bias



2.1.3 Parameters

obi_num	0
ascdsver	7.6.9
caldsver	3.2.3
date	2006-10-14T20:37:03
revision	2

sched_exp_time	5000.000000
ontime	4761.0303584933
ontime0	4761.0303584933
ontime1	4761.0303386152
ontime2	4761.0303584933
ontime3	4761.0303584933
ontime6	4757.7893683016
ontime7	4757.7893484235
l1events	188777

2.1.4 Events

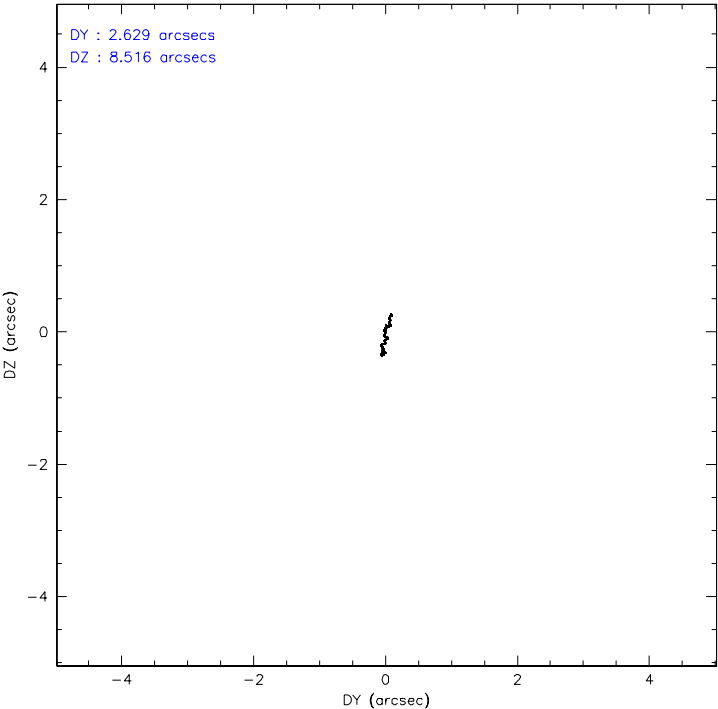
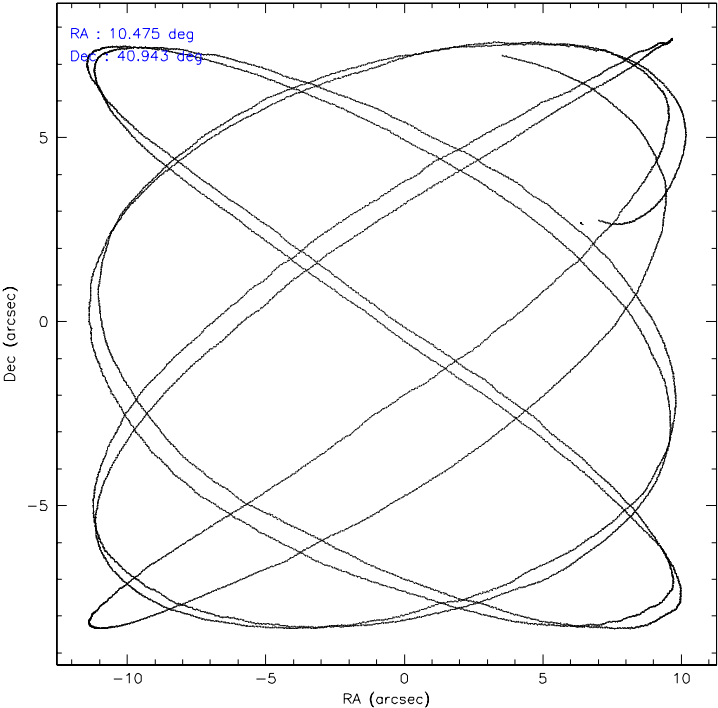
	ccd 0	ccd 1	ccd 2	ccd 3	ccd 6	ccd 7
level 1 events	27260	29055	28723	31626	32241	39872
rejected events	23410	24788	25125	26980	28691	24739
rejected %	85%	85%	87%	85%	88%	62%

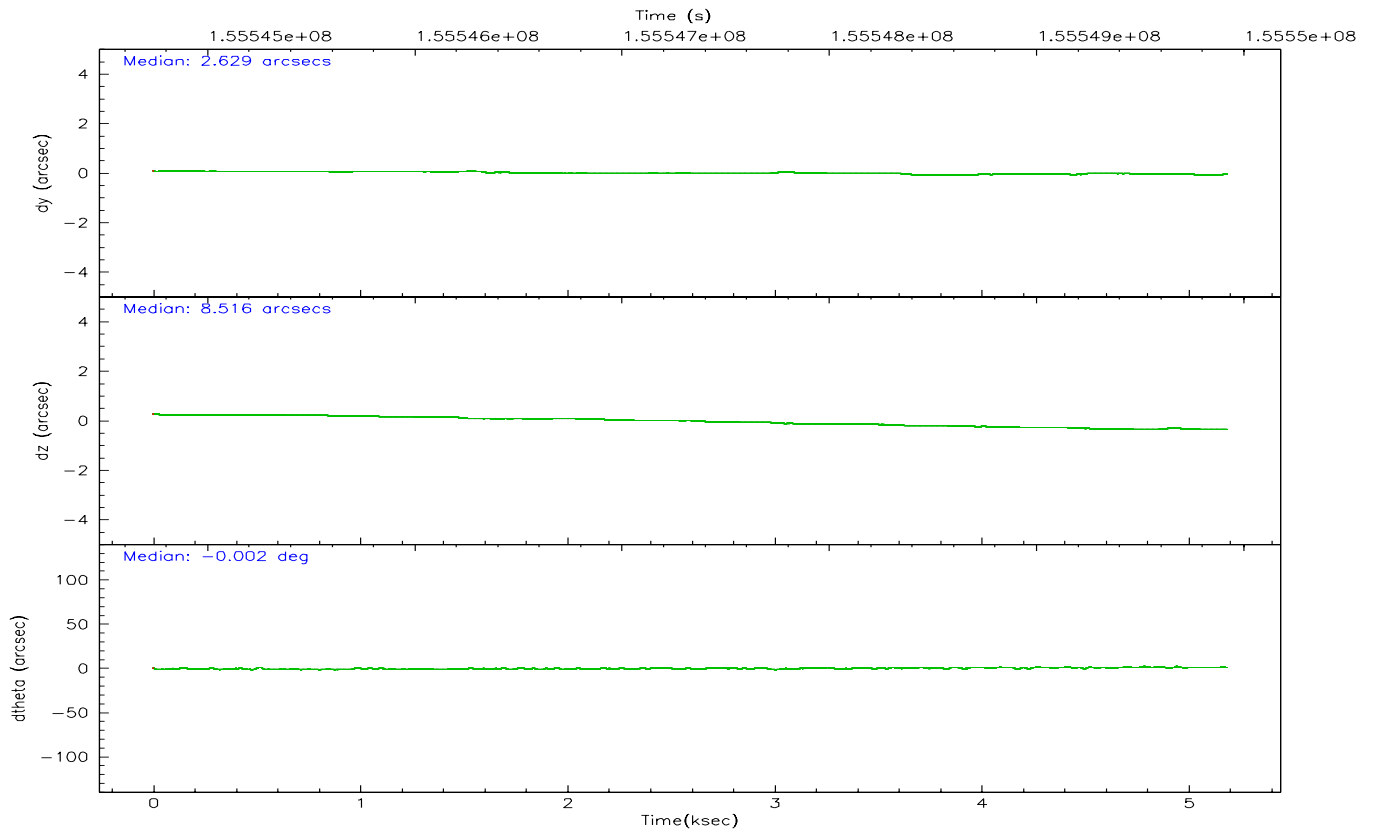
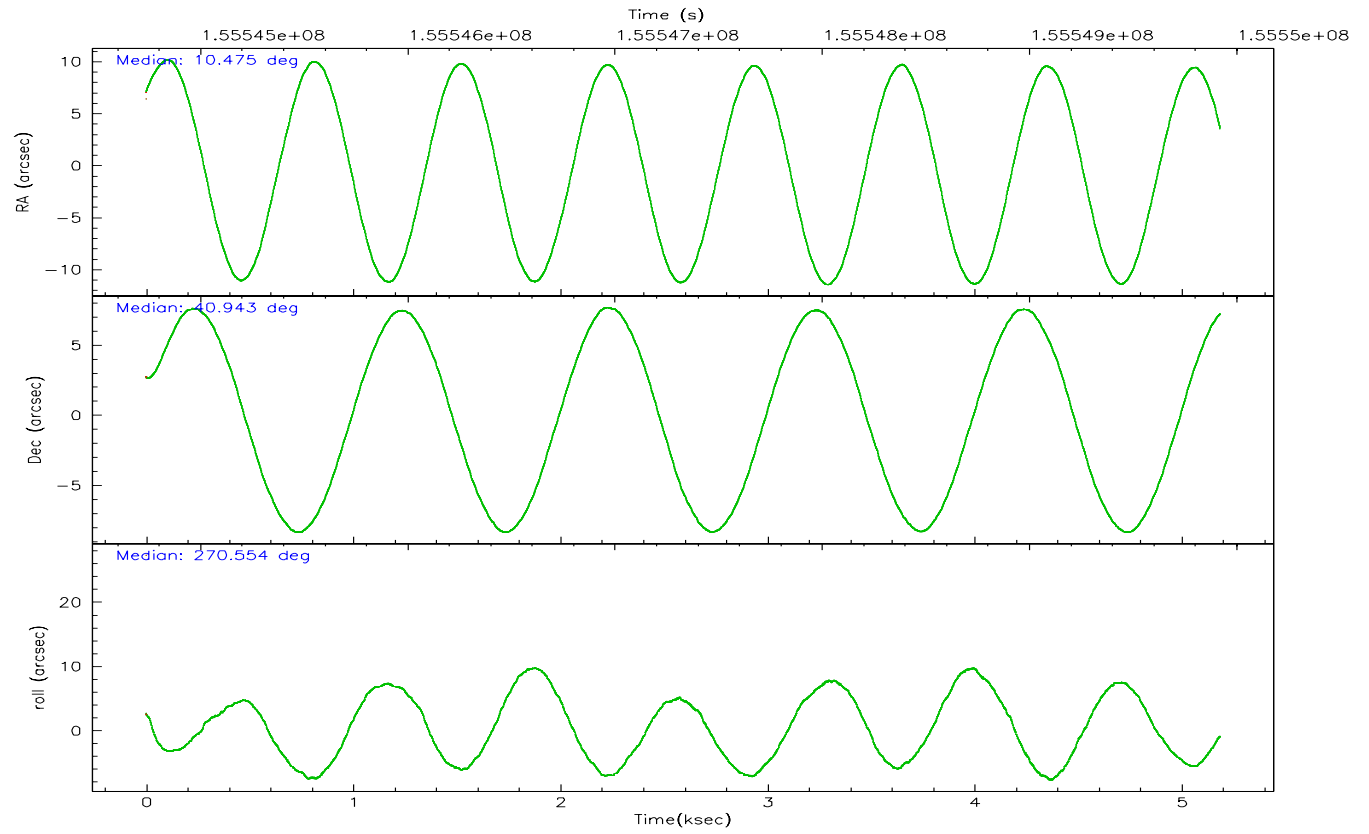
	ccd 0	ccd 1	ccd 2	ccd 3	ccd 6	ccd 7
grade 0 events	1668	1860	1707	2506	1449	918
	6%	6%	5%	7%	4%	2%
grade 1 events	15	21	18	31	19	21
	0%	0%	0%	0%	0%	0%
grade 2 events	800	837	681	751	702	3772
	2%	2%	2%	2%	2%	9%
grade 3 events	389	384	320	370	334	737
	1%	1%	1%	1%	1%	1%
grade 4 events	377	392	334	389	380	724
	1%	1%	1%	1%	1%	1%
grade 5 events	1244	1223	1174	1308	1369	2617
	4%	4%	4%	4%	4%	6%
grade 6 events	625	794	564	637	687	9002
	2%	2%	1%	2%	2%	22%
grade 7 events	22142	23544	23925	25634	27301	22081
	81%	81%	83%	81%	84%	55%

2.2 Compared Parameters

Parameter	Planned	Actual	Parameter	Planned	Actual
Instrument	ACIS	ACIS	Obspar format version number	6	6
Detector	ACIS-012367	ACIS-012367	Obspar file type	PREDICTED	ACTUAL
Grating	NONE	NONE	Obspar update status	NONE	UPDATED
Data mode	FAINT	FAINT	Number of optional ACIS chips dropped	0	0
Observation mode	POINTING	POINTING	On-chip summing requested	N	N
Pointing RA	10.456888	10.47560401520993	Subarray requested	NONE	NONE
Pointing Dec	40.965760	40.94230229181295	Alternating exposures requested	N	N
Pointing Roll	270.366155	270.5625852374064	Primary exposure time	0.000000	3.2
Window start time	155174464.184000	155174464.184000			
Window stop time	155779264.184000	155779264.184000			
SIM focus pos (mm)	-0.782348	-0.7809083437167272			
SIM defocus (mm)	0	0.001439871863259334			
SIM translation stage pos (mm)	-233.592463	-233.5874344608287			
SIM translation stage offset (mm)	0	-0.005018542100998502			
Observation start time	155544920.184000	155543879.22451			
Observation start date	2002-12-06T06:54:16	2002-12-06T06:37:59			
Observation end time	155549920.184000	155550612.96229			
Observation end date	2002-12-06T08:17:36	2002-12-06T08:30:12			
Read mode	TIMED	TIMED			

2.3 Aspect



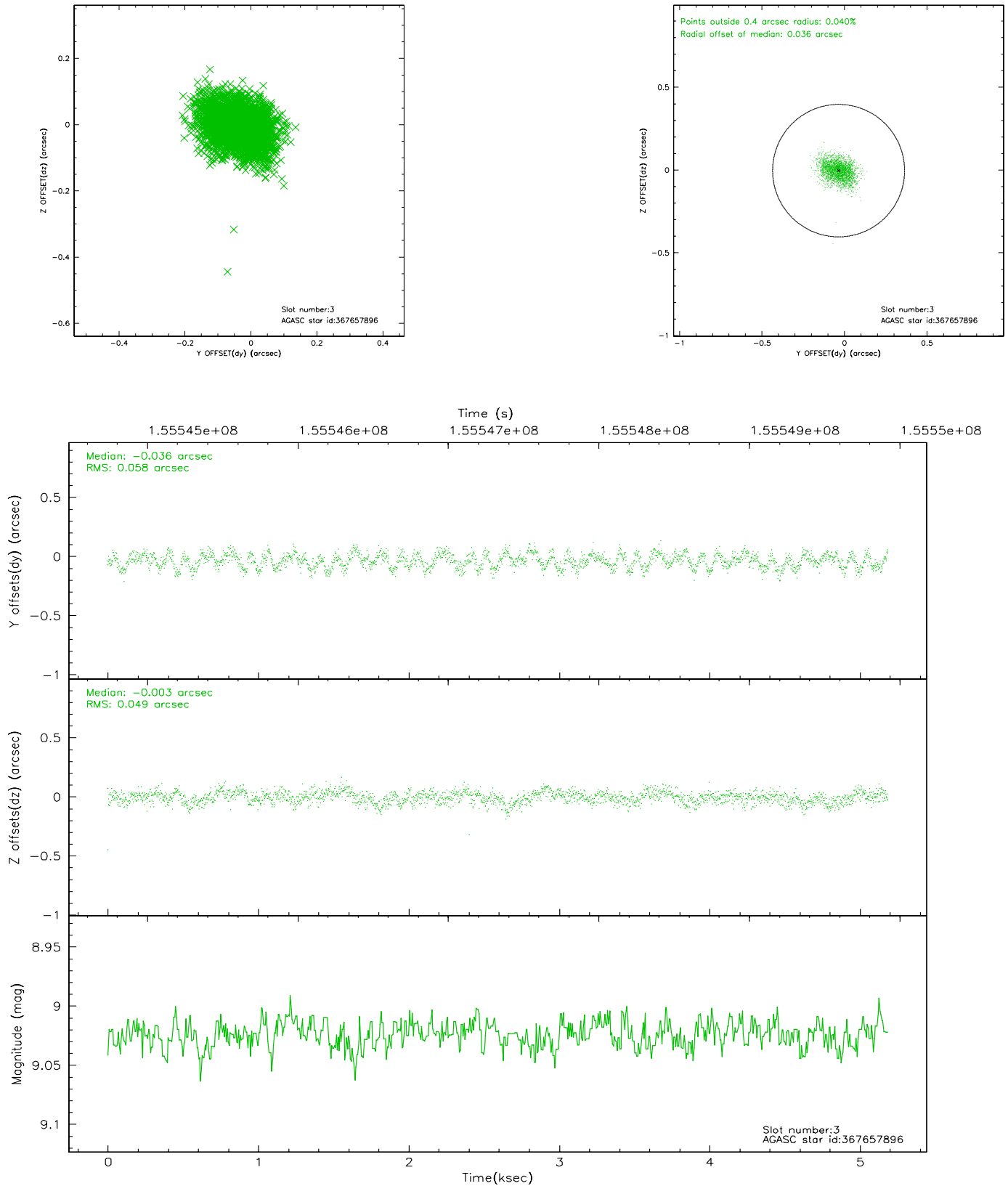


Slot Statistics

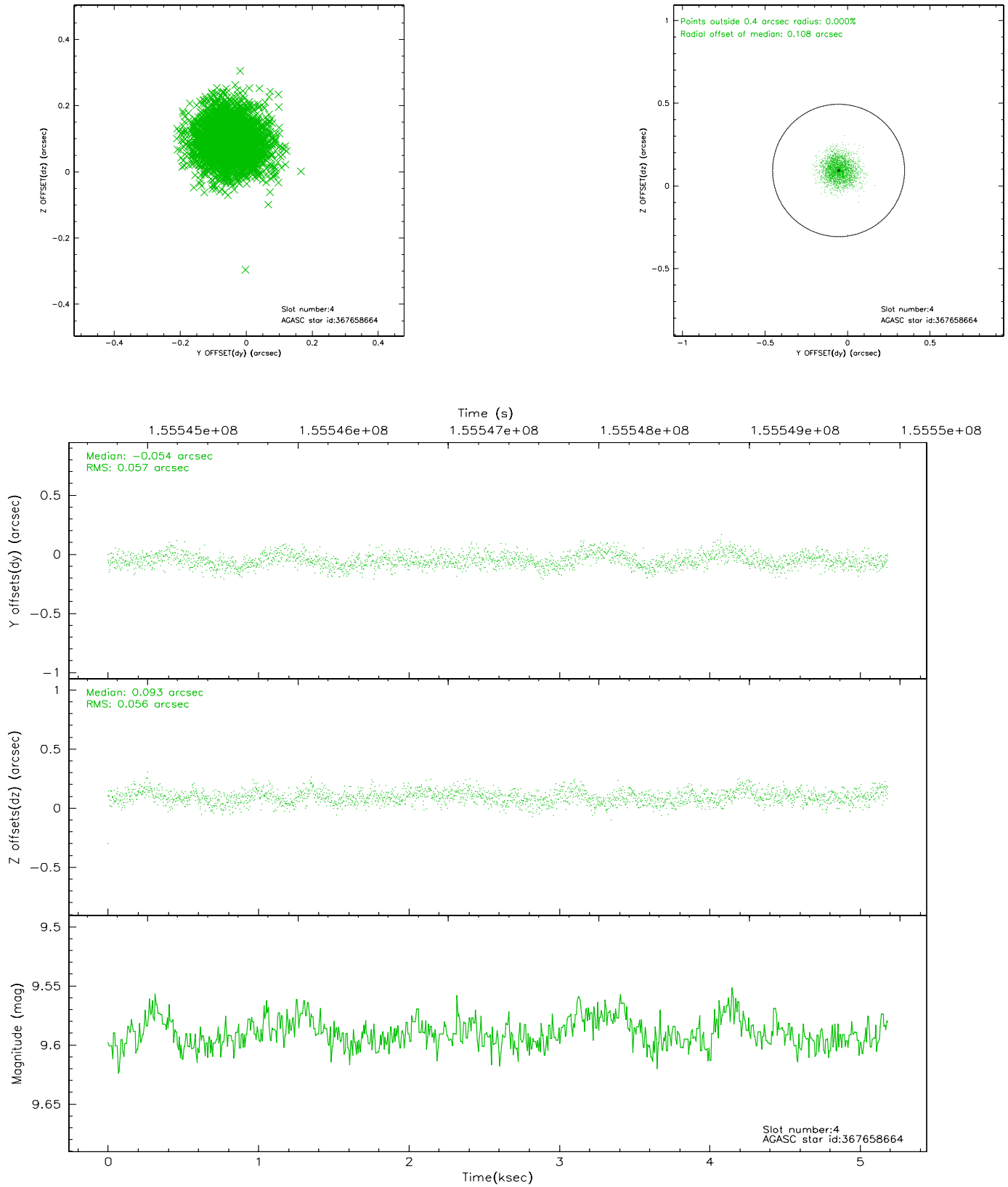
slot	status	id	mag	n_pts	med_dy	med_dz	dr1	dr2	ra	dec	mean_y	mean_z
0	FID	ACIS-I-1	7.25	1266	-0.045	0.088	0.009	0.017	0.000000	0.000000	937.12	-831.83
1	FID	ACIS-I-5	7.24	1265	-0.025	0.025	0.008	0.013	0.000000	0.000000	-1810.32	1065.01
2	FID	ACIS-I-6	7.26	1265	-0.022	-0.043	0.009	0.015	0.000000	0.000000	401.42	1710.77
3	GUIDE	367657896	9.02	2529	-0.036	-0.003	0.081	0.129	11.197765	41.313576	-1246.91	2011.37
4	GUIDE	367658664	9.59	2528	-0.054	0.093	0.084	0.137	10.374070	41.369746	-1455.06	-213.57
5	GUIDE	367674552	8.85	2530	-0.028	0.013	0.084	0.136	11.016238	41.570845	-2173.02	1520.34
6	GUIDE	365443592	8.85	2528	0.084	-0.072	0.076	0.125	9.661411	40.437300	1879.58	-2190.72
7	GUIDE	365439720	8.49	2528	0.025	-0.033	0.087	0.142	9.704623	40.431022	1905.47	-2074.07

2.4 Star Slots

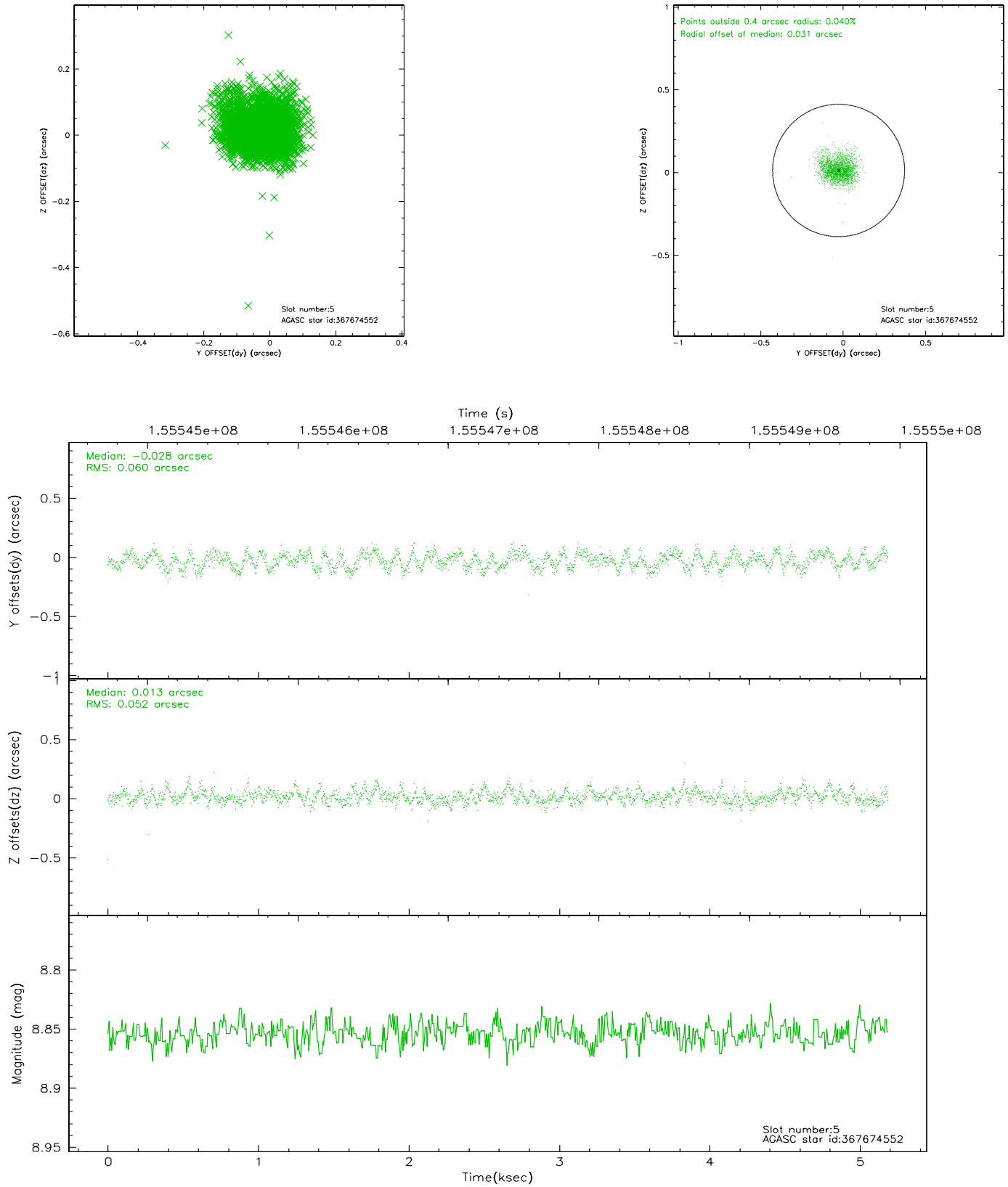
2.4.1 Slot 3



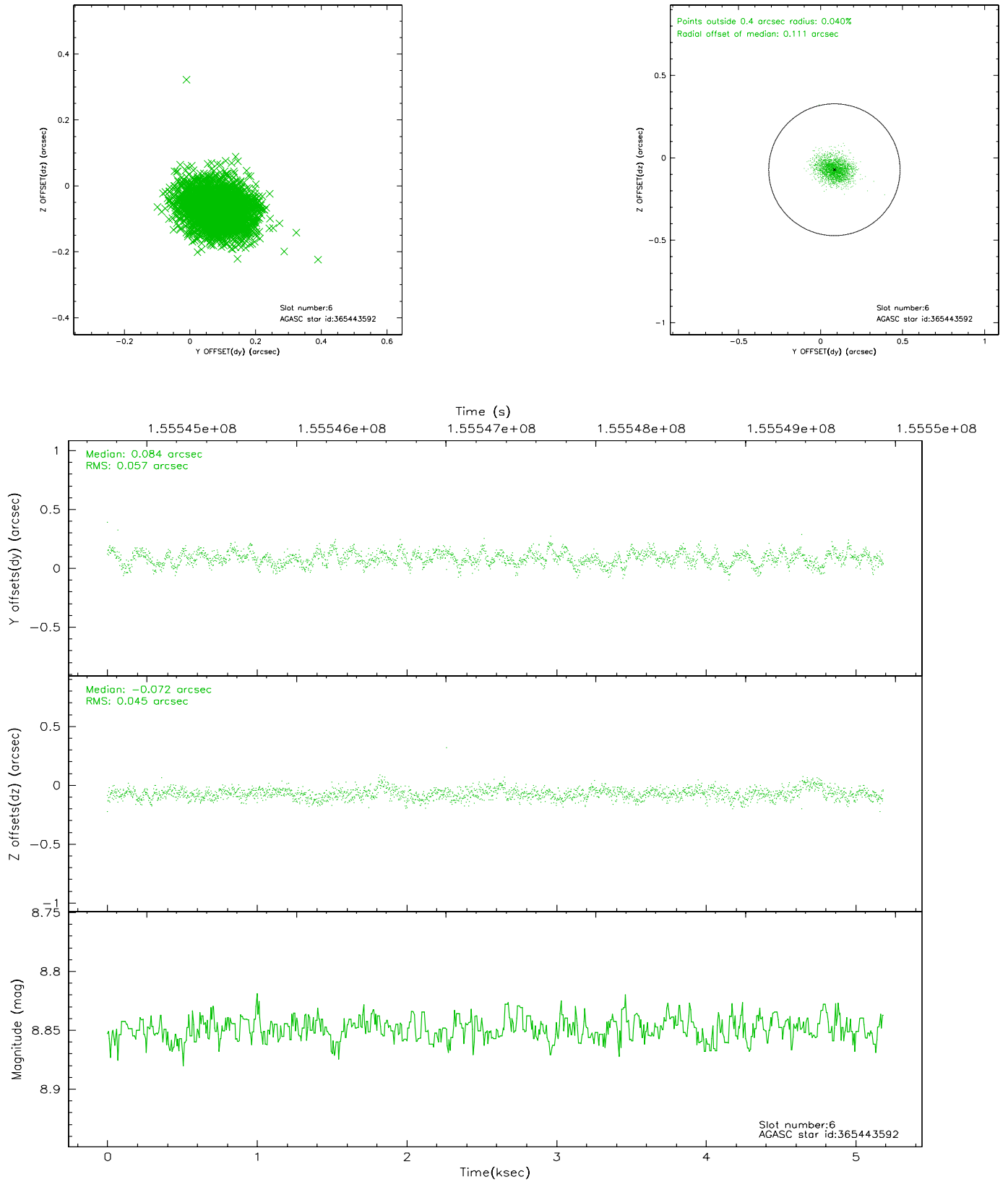
2.4.2 Slot 4



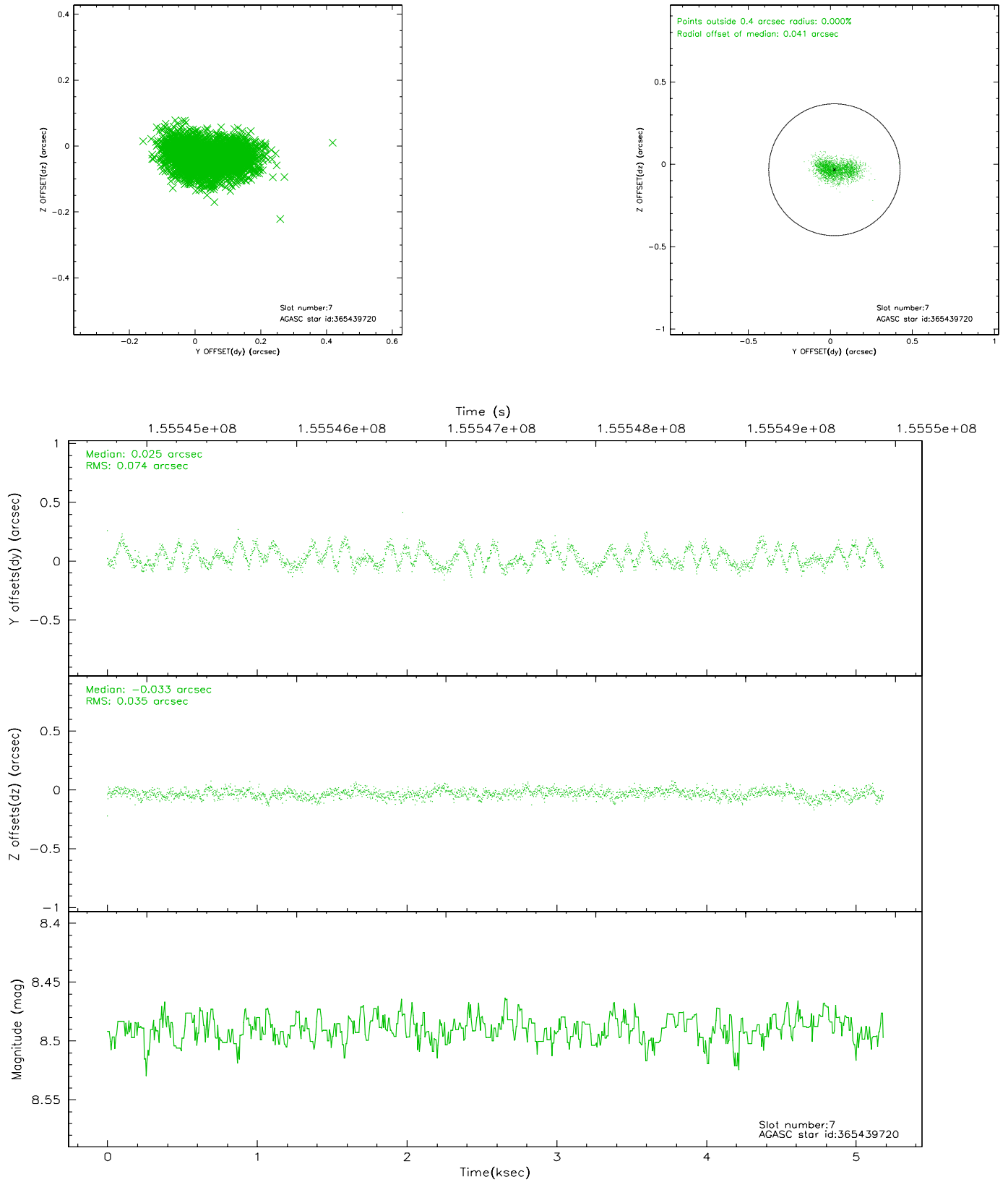
2.4.3 Slot 5



2.4.4 Slot 6

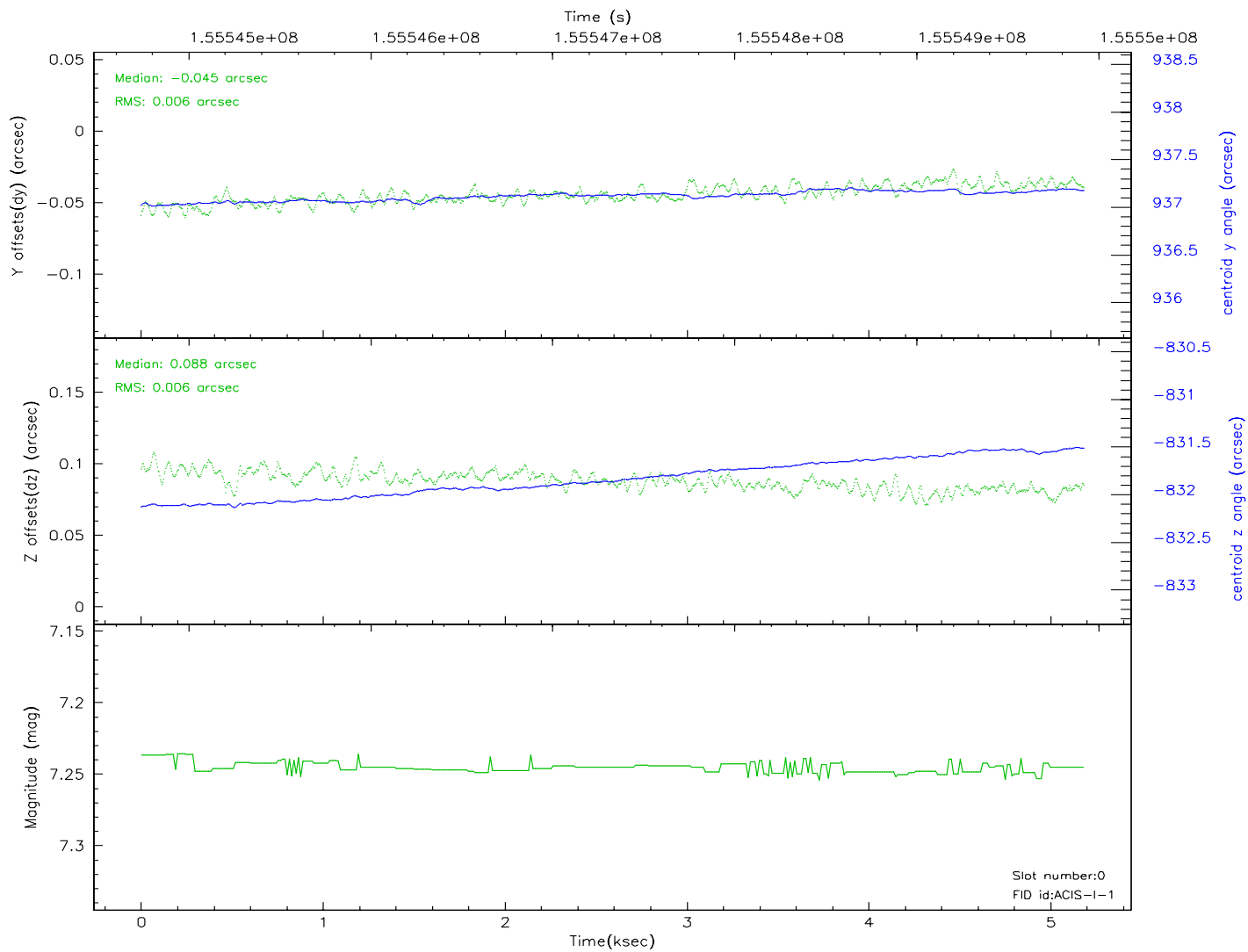
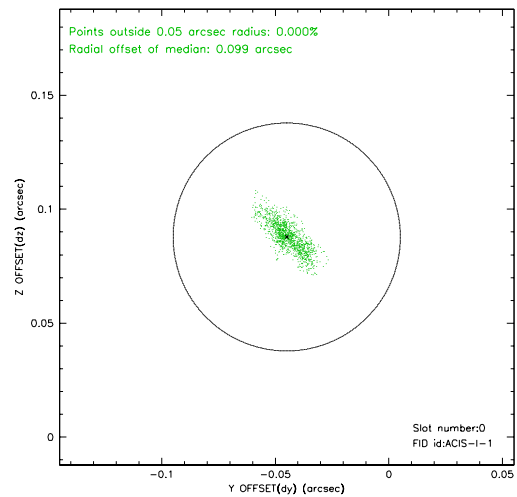
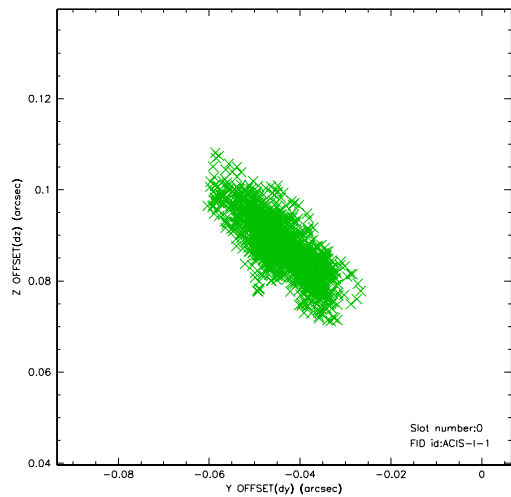


2.4.5 Slot 7

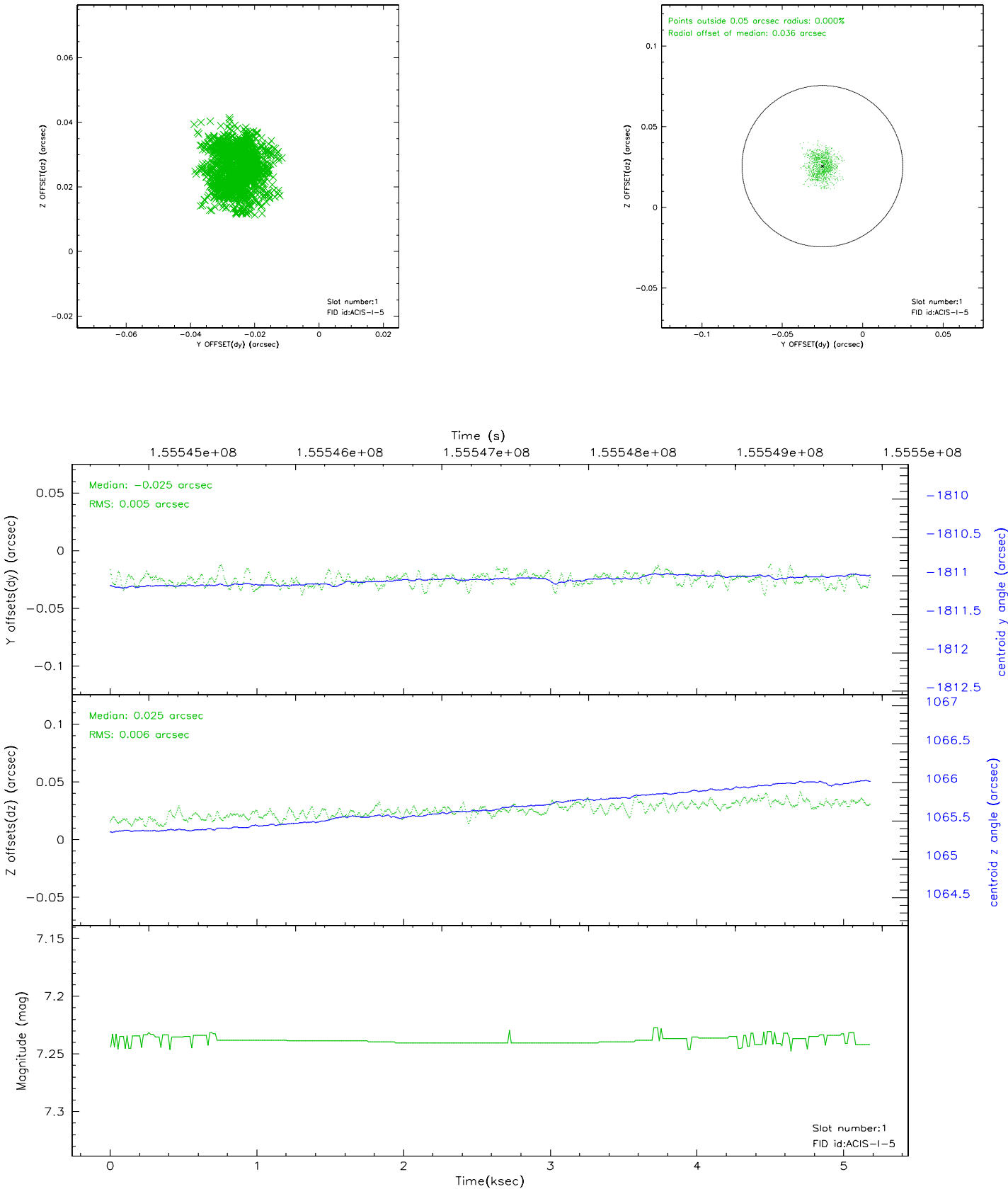


2.5 FID Slots

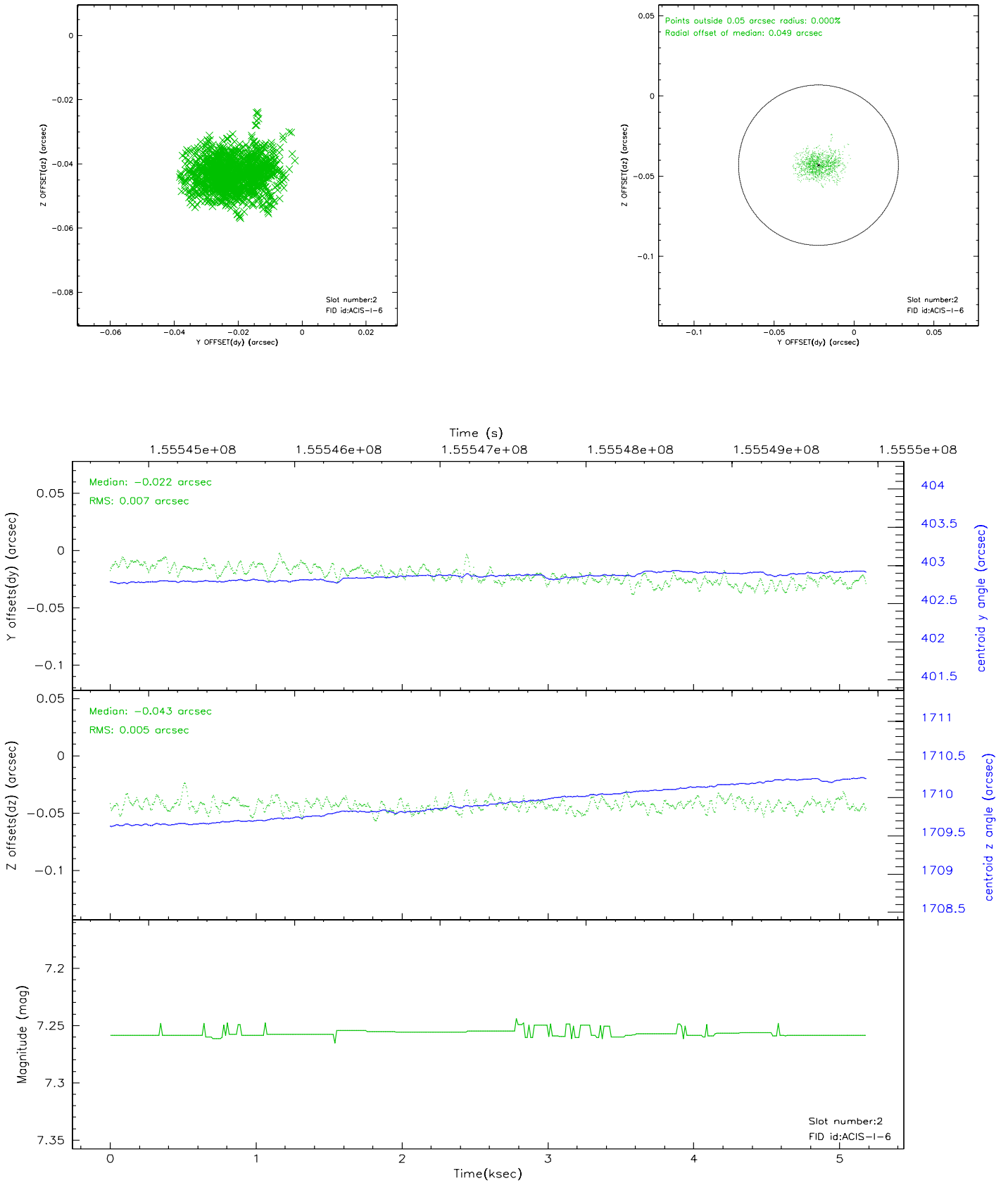
2.5.1 Slot 0



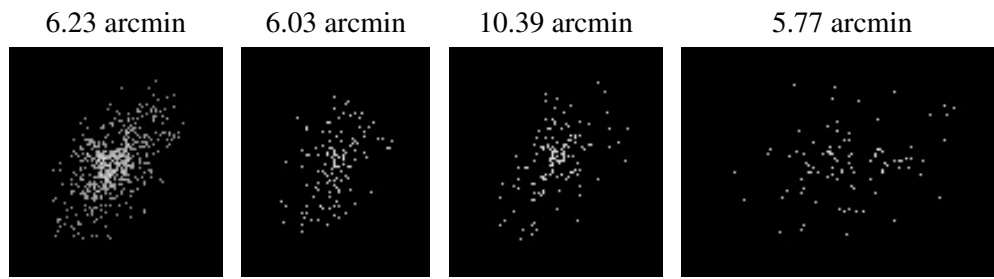
2.5.2 Slot 1



2.5.3 Slot 2



3 Point Sources



A Summary

A.1 Status

V&V Scientist	Beth Sundheim
V&V Date (YYYY-MM-DD)	2006.10.15
V&V Edition	1
V&V Disposition and Status	OK
V&V Charge Time	4.758

A.2 Comments