

V&V Reference Report

L2 ASCDS Version : 7.6.10

Observation 2842 - L2 Version 001
Chandra X-Ray Center

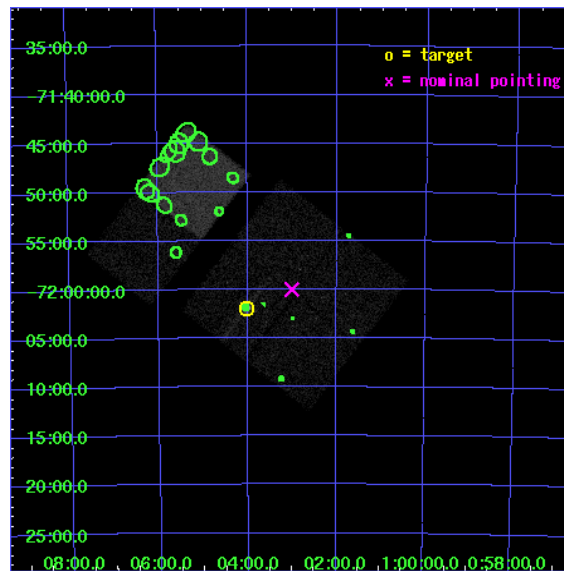
L2 Processing Date : Jan 21 2007

Contents

1	Front	2
2	OBI	3
2.1	OBI	3
2.1.1	Images	3
2.1.2	Bias	3
2.1.3	Parameters	4
2.1.4	Events	4
2.2	Compared Parameters	5
2.3	Aspect	6
2.4	Star Slots	9
2.4.1	Slot 3	9
2.4.2	Slot 4	10
2.4.3	Slot 5	11
2.4.4	Slot 6	12
2.4.5	Slot 7	13
2.5	FID Slots	14
2.5.1	Slot 0	14
2.5.2	Slot 1	15
2.5.3	Slot 2	16
3	Point Sources	17
A	Summary	18
A.1	Status	18
A.2	Comments	18

1 Front

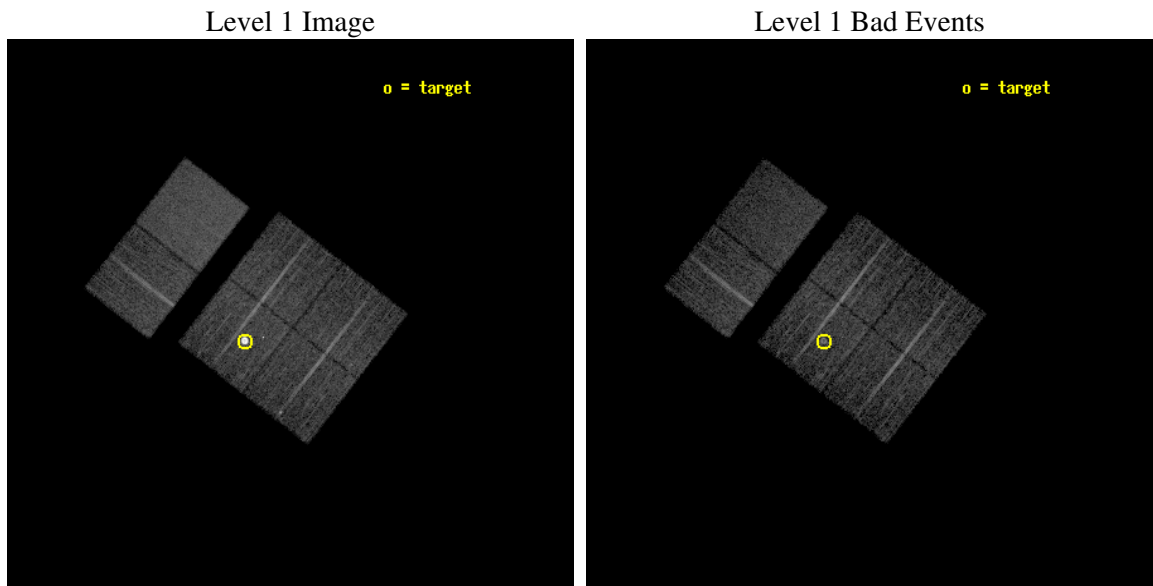
seq_num	590231
obs_id	2842
title	AO3A ACIS-I CALIBRATION OBSERVATIONS OF E0102-72
observer	Dr. CXC Calibration
object	E0102-72.3 [Chip I2, T=120, Offsets=4,2,0]
dtcycle	0
cycle	P
ra_targ	16.01
dec_targ	-72.032028
ra_nom	15.751836953581
dec_nom	-72.000173567143
roll_nom	307.85704295922
revision	2
ontime	7558.4000070393
livetime	7462.6909950281
ontime0	7558.4000070393
ontime1	7558.4000070393
ontime2	7558.4000070393
ontime3	7558.4000070393
ontime6	7558.4000070393
ontime7	7558.4000070393
l2events	77858



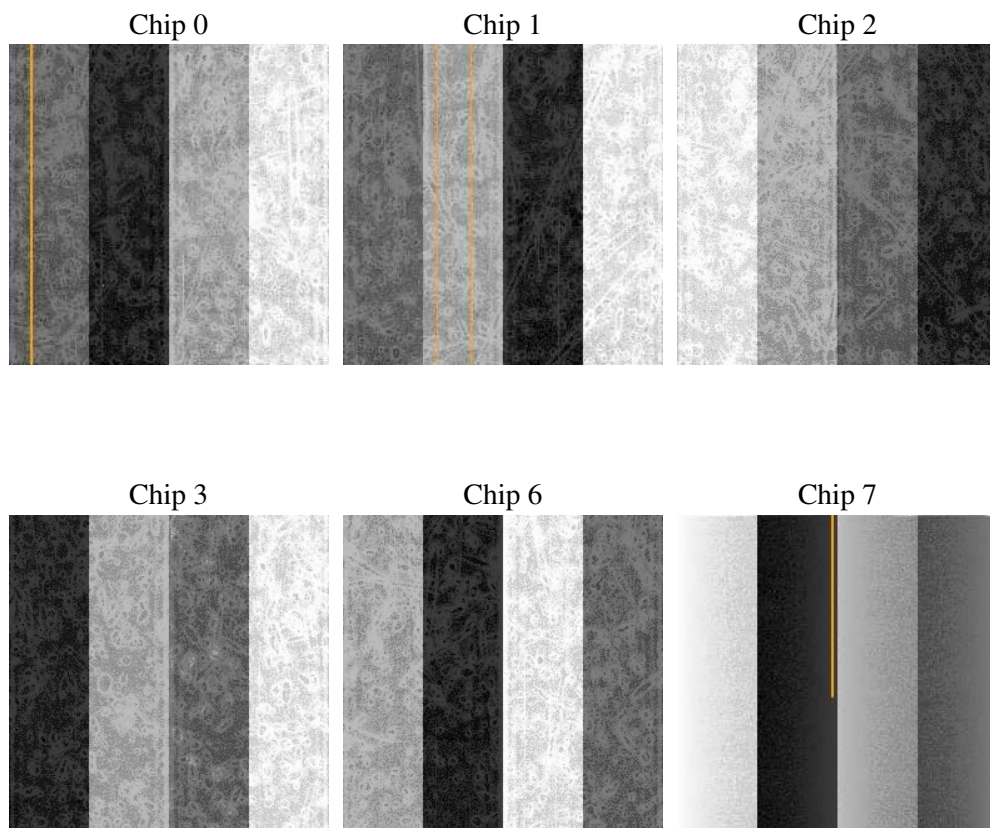
2 OBI

2.1 OBI

2.1.1 Images



2.1.2 Bias



2.1.3 Parameters

obi_num	1
ascdsver	7.6.10
caldbver	3.3.0
date	2007-01-20T12:35:28
revision	2

sched_exp_time	7800.000000
ontime	7558.4000070393
ontime0	7558.4000070393
ontime1	7558.4000070393
ontime2	7558.4000070393
ontime3	7558.4000070393
ontime6	7558.4000070393
ontime7	7558.4000070393
l1events	320597

2.1.4 Events

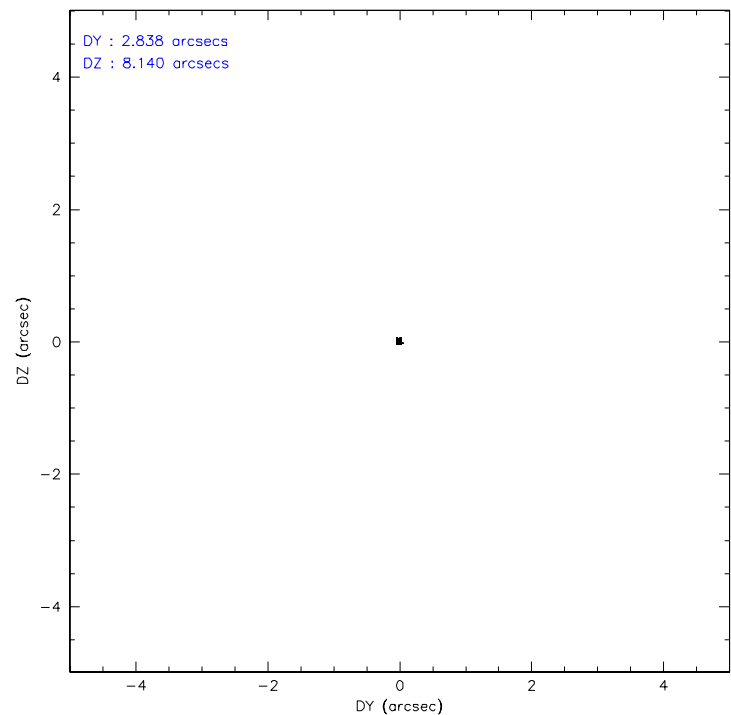
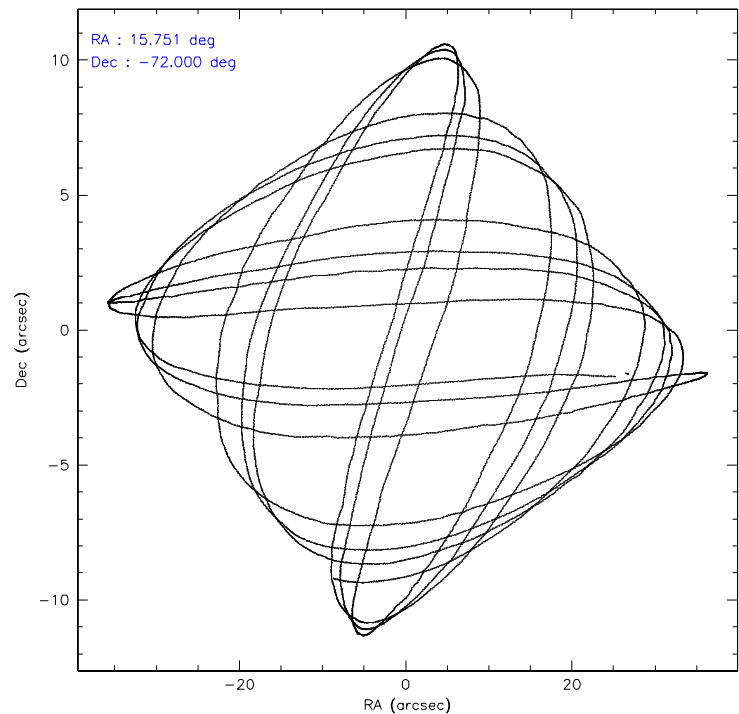
	ccd 0	ccd 1	ccd 2	ccd 3	ccd 6	ccd 7
level 1 events	43361	44587	75395	46953	47491	62810
rejected events	37207	38441	43052	41360	41847	36174
rejected %	85%	86%	57%	88%	88%	57%

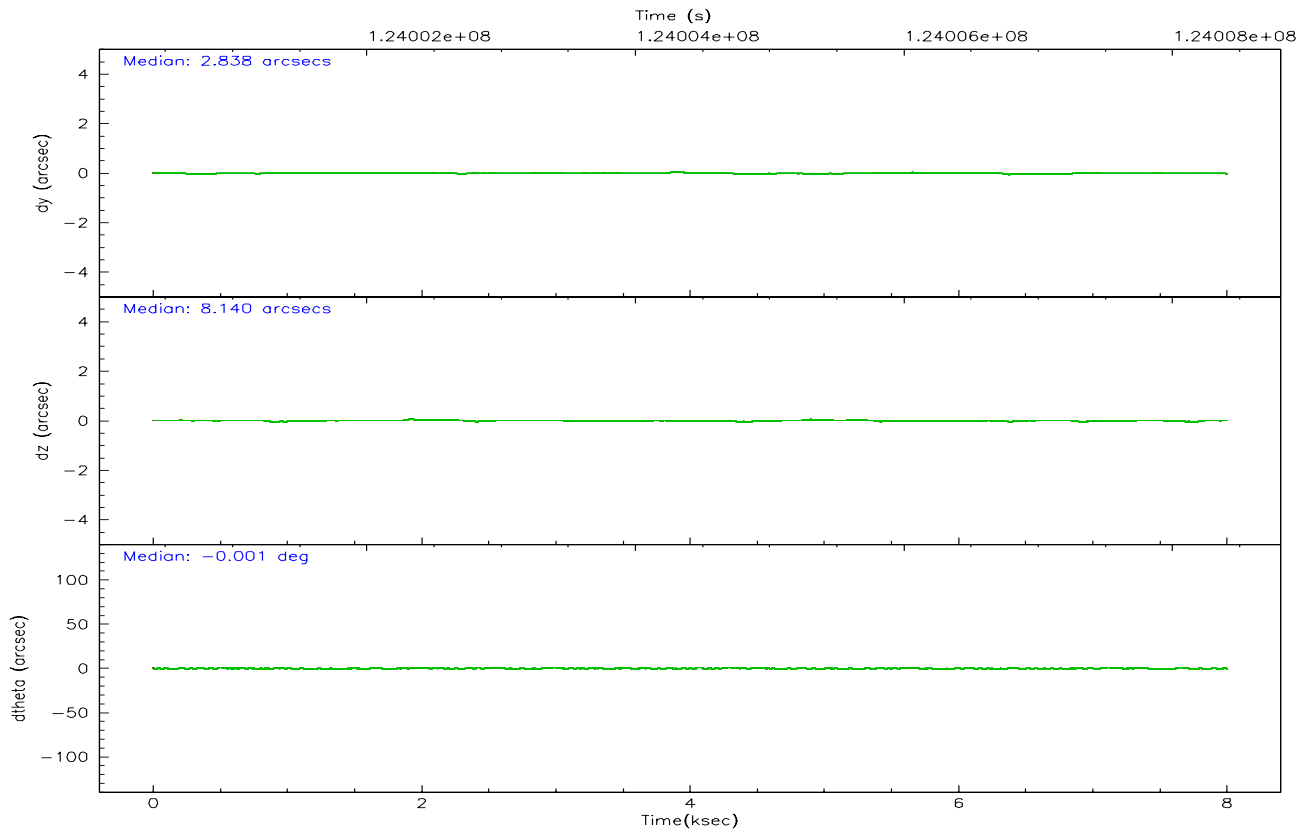
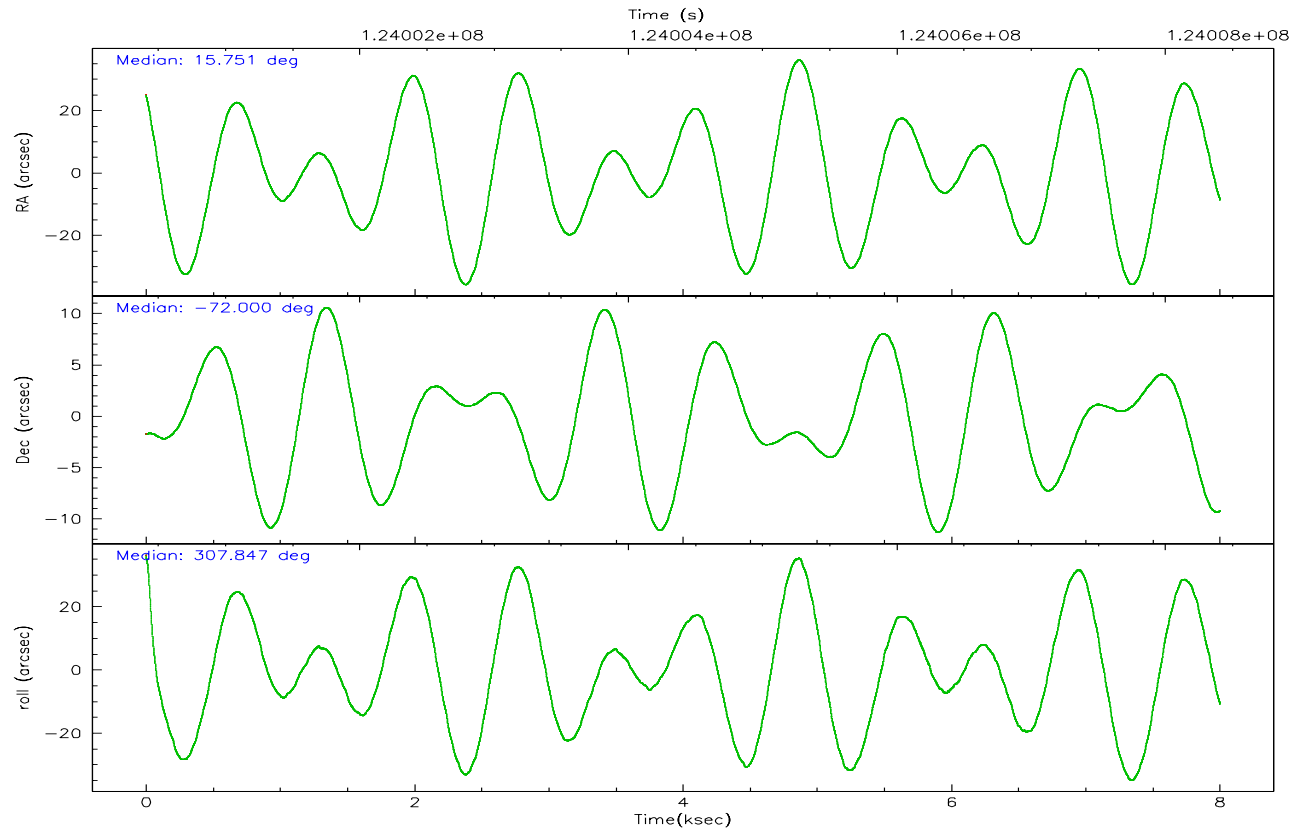
	ccd 0	ccd 1	ccd 2	ccd 3	ccd 6	ccd 7
grade 0 events	2838	2588	26335	2471	2275	2589
	6%	5%	34%	5%	4%	4%
grade 1 events	25	25	234	18	27	67
	0%	0%	0%	0%	0%	0%
grade 2 events	1254	1260	3039	1107	1160	5235
	2%	2%	4%	2%	2%	8%
grade 3 events	581	608	941	552	551	2353
	1%	1%	1%	1%	1%	3%
grade 4 events	519	600	966	549	555	2393
	1%	1%	1%	1%	1%	3%
grade 5 events	1713	1843	1791	1880	2050	6030
	3%	4%	2%	4%	4%	9%
grade 6 events	968	1098	1102	918	1112	14081
	2%	2%	1%	1%	2%	22%
grade 7 events	35463	36565	40987	39458	39761	30062
	81%	82%	54%	84%	83%	47%

2.2 Compared Parameters

Parameter	Planned	Actual	Parameter	Planned	Actual
Instrument	ACIS	ACIS	Obspar format version number	6	6
Detector	ACIS-012367	ACIS-012367	Obspar file type	PREDICTED	ACTUAL
Grating	NONE	NONE	Obspar update status	NONE	UPDATED
Data mode	FAINT	FAINT	Number of optional ACIS chips dropped	0	0
Observation mode	POINTING	POINTING	On-chip summing requested	N	N
Pointing RA	15.669645	15.75183695358118	Subarray requested	NONE	NONE
Pointing Dec	-71.989852	-72.00017356714326	Alternating exposures requested	N	N
Pointing Roll	307.570156	307.8570429592164	Primary exposure time	0.000000	3.2
Window start time	123552064.184000	123552064.184000			
Window stop time	126144064.184000	126144064.184000			
SIM focus pos (mm)	-0.782348	-0.7809083437167272			
SIM defocus (mm)	0	0.001439871863259334			
SIM translation stage pos (mm)	-233.592463	-233.5874344608287			
SIM translation stage offset (mm)	0	-0.005018542100998502			
Observation start time	124000609.184000	124000233.24747			
Observation start date	2001-12-06T04:35:45	2001-12-06T04:30:33			
Observation end time	124008409.184000	124008558.8103			
Observation end date	2001-12-06T06:45:45	2001-12-06T06:49:18			
Read mode	TIMED	TIMED			

2.3 Aspect



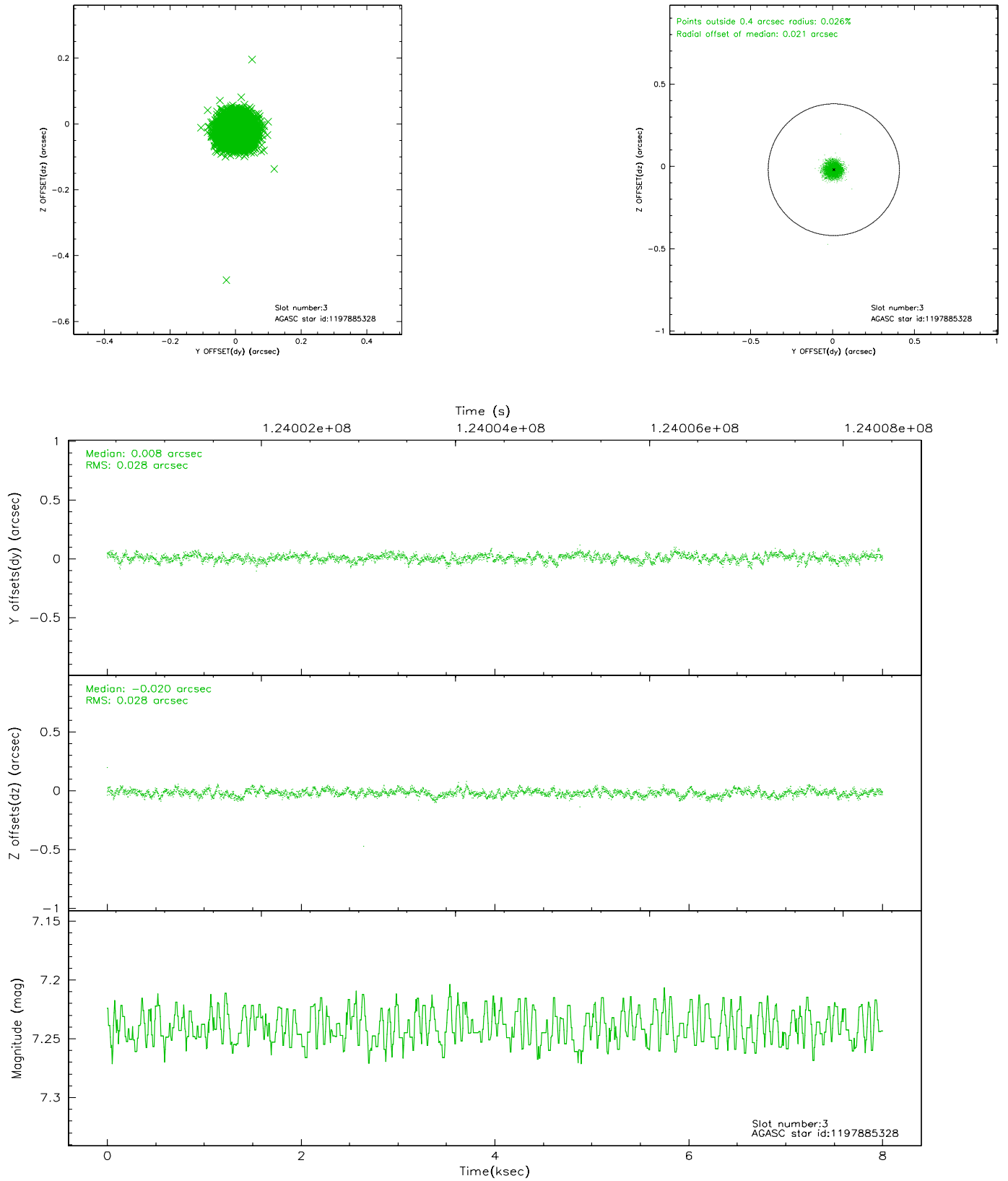


Slot Statistics

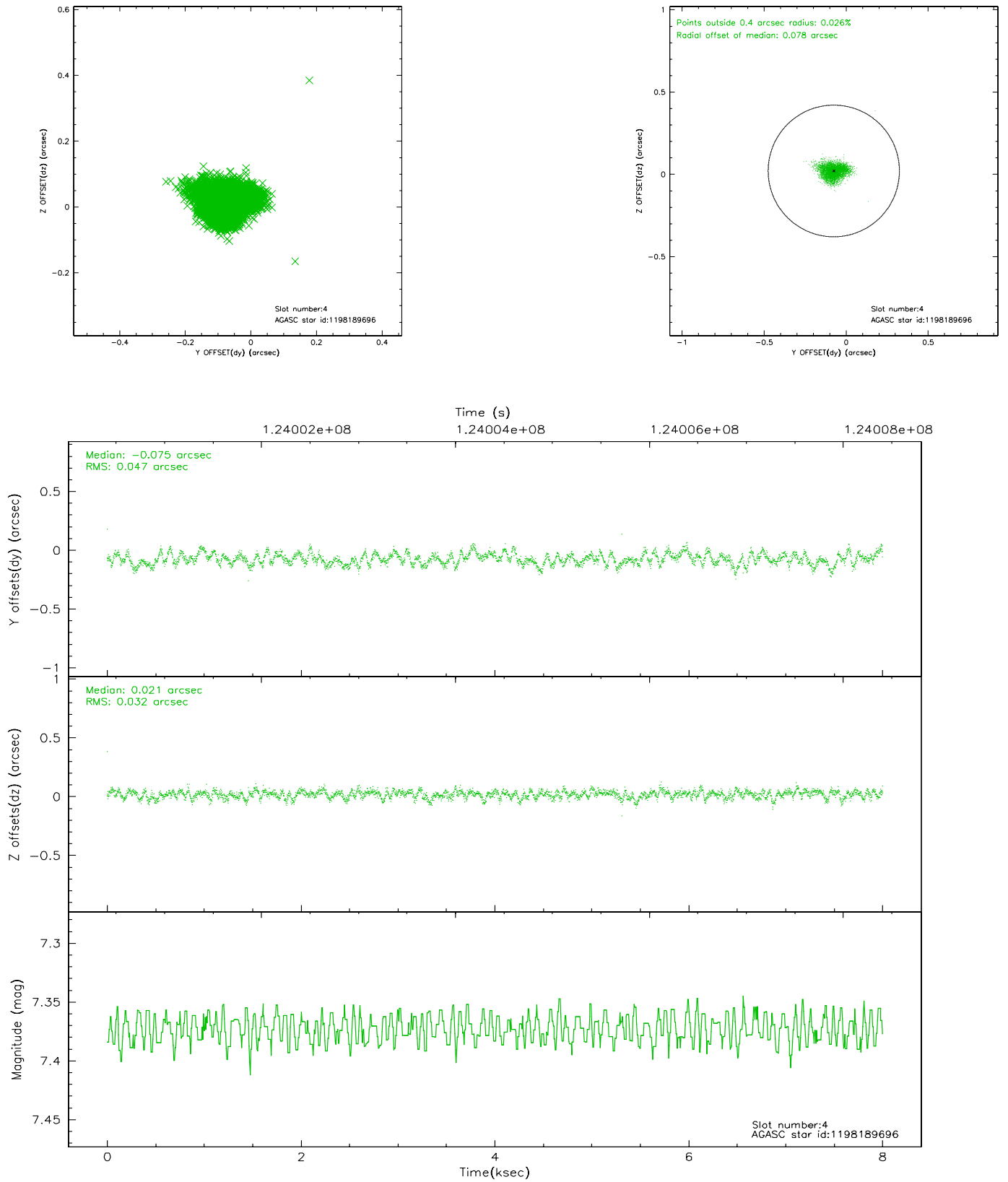
slot	status	id	mag	n_pts	med_dy	med_dz	dr1	dr2	ra	dec	mean_y	mean_z
0	FID	ACIS-I-1	7.24	1953	-0.044	0.089	0.006	0.010	0.000000	0.000000	936.91	-831.49
1	FID	ACIS-I-5	7.24	1952	-0.010	0.030	0.006	0.010	0.000000	0.000000	-1810.75	1065.62
2	FID	ACIS-I-6	7.26	1952	-0.037	-0.049	0.007	0.011	0.000000	0.000000	401.73	1710.82
3	GUIDE	1197885328	7.24	3904	0.008	-0.020	0.042	0.066	16.283090	-71.733943	-305.38	1108.86
4	GUIDE	1198189696	7.37	3905	-0.075	0.021	0.060	0.096	15.223750	-72.697522	1729.92	-1931.80
5	GUIDE	1197750936	7.56	3905	-0.059	-0.032	0.052	0.084	15.387940	-71.549550	-1451.00	711.36
6	GUIDE	1197884536	8.50	3905	0.058	0.029	0.060	0.096	17.160729	-71.835289	595.18	1653.72
7	GUIDE	1197749416	10.28	3895	0.071	0.006	0.117	0.195	13.610513	-71.871242	-1712.74	-1590.69

2.4 Star Slots

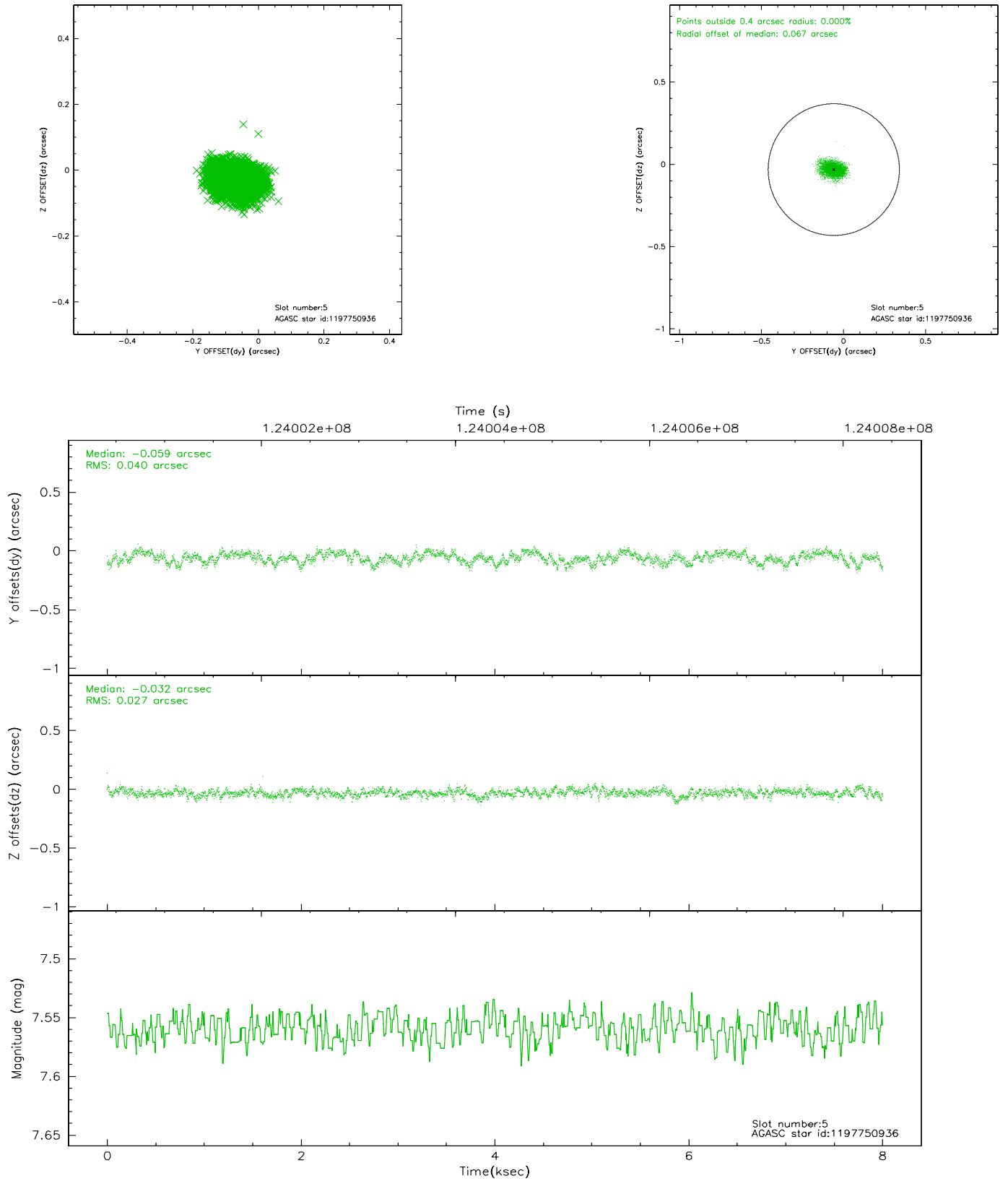
2.4.1 Slot 3



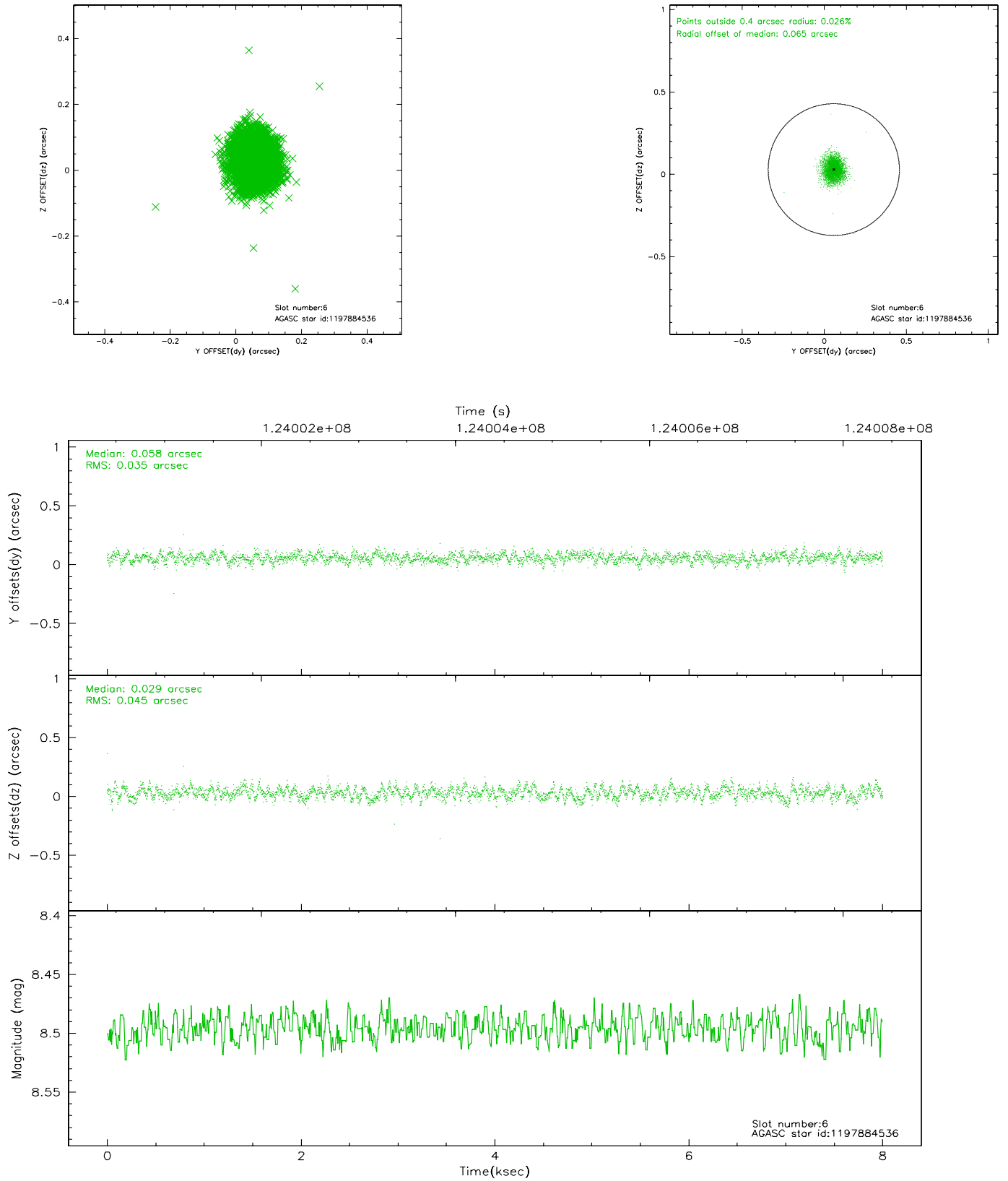
2.4.2 Slot 4



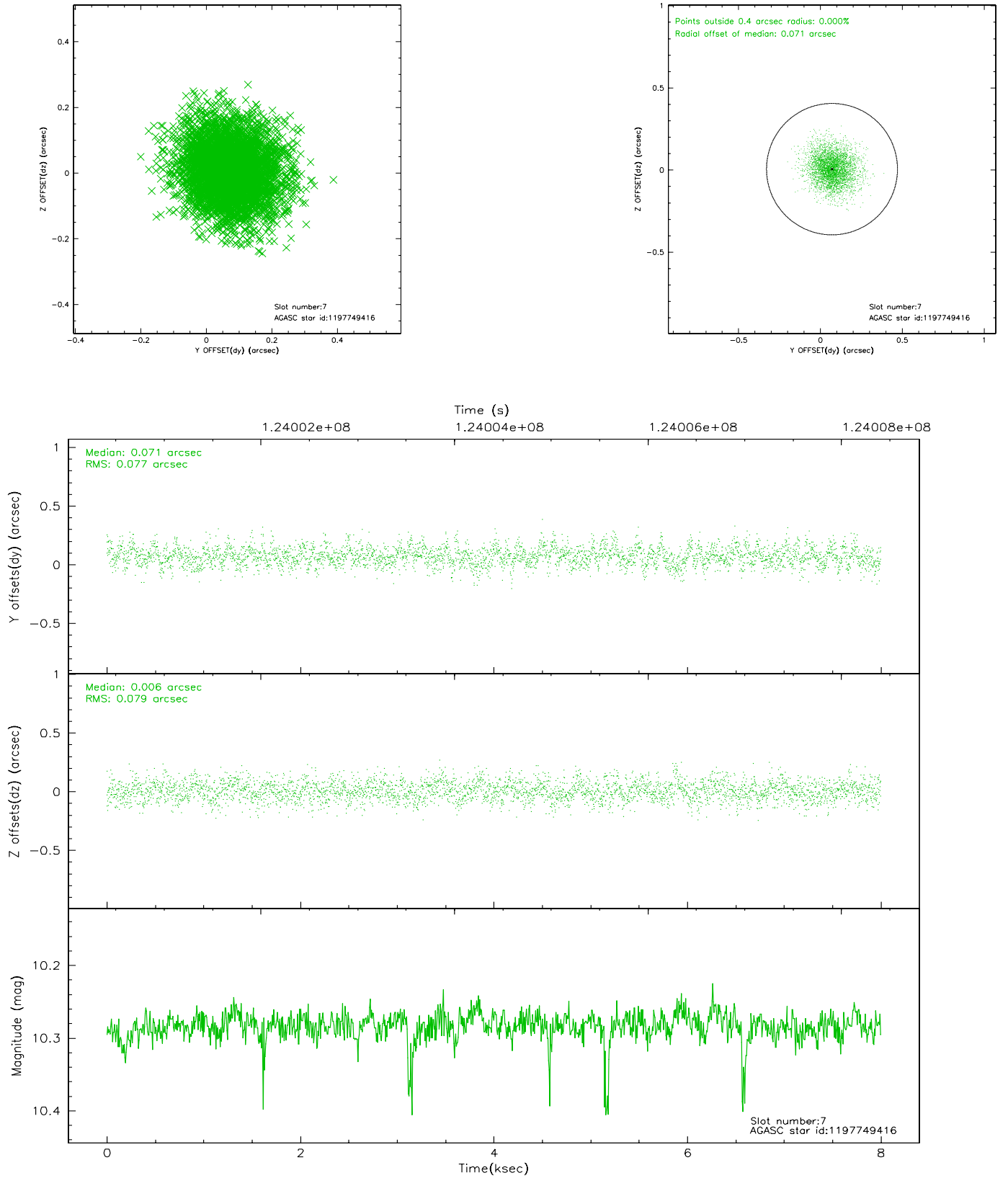
2.4.3 Slot 5



2.4.4 Slot 6

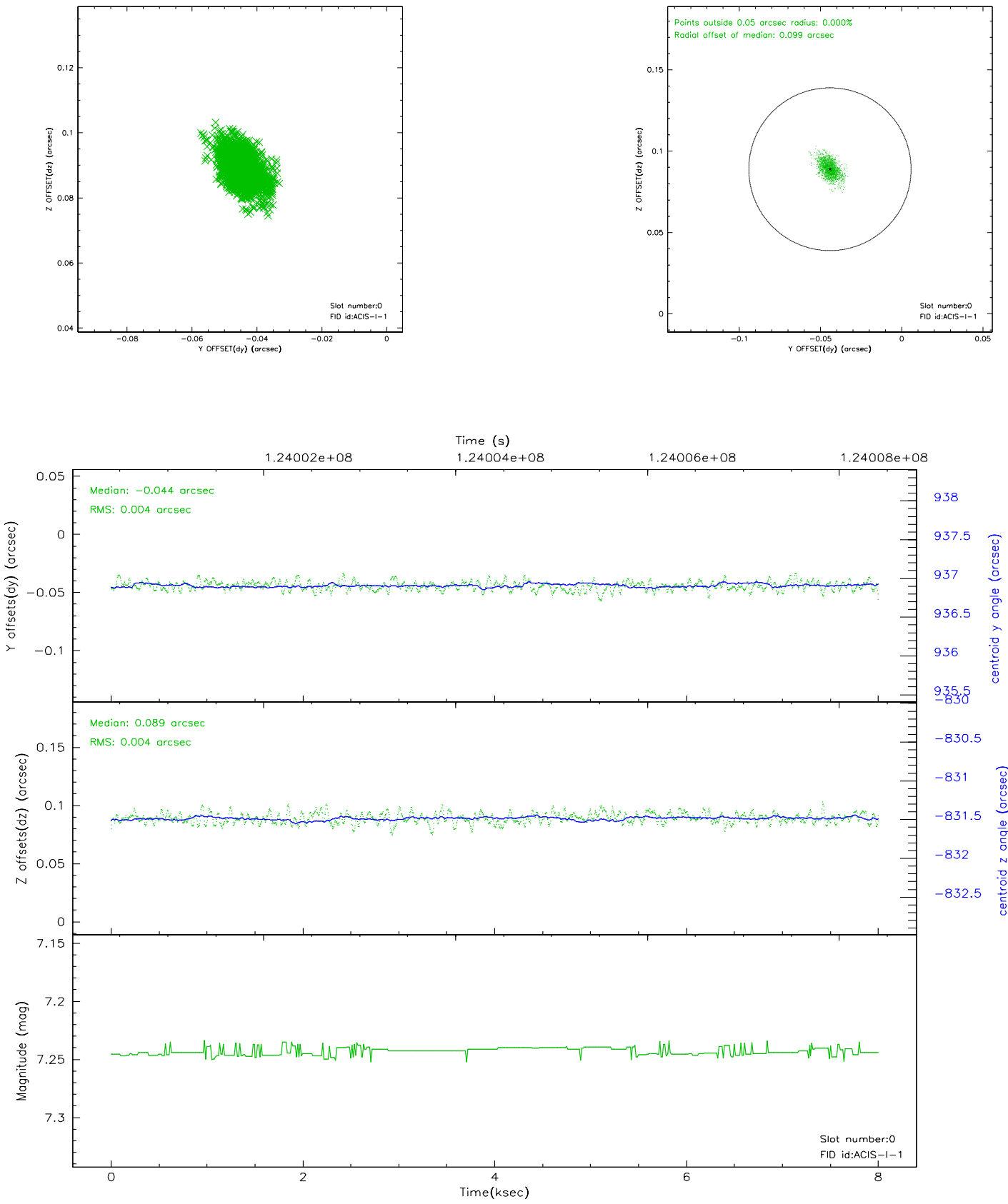


2.4.5 Slot 7

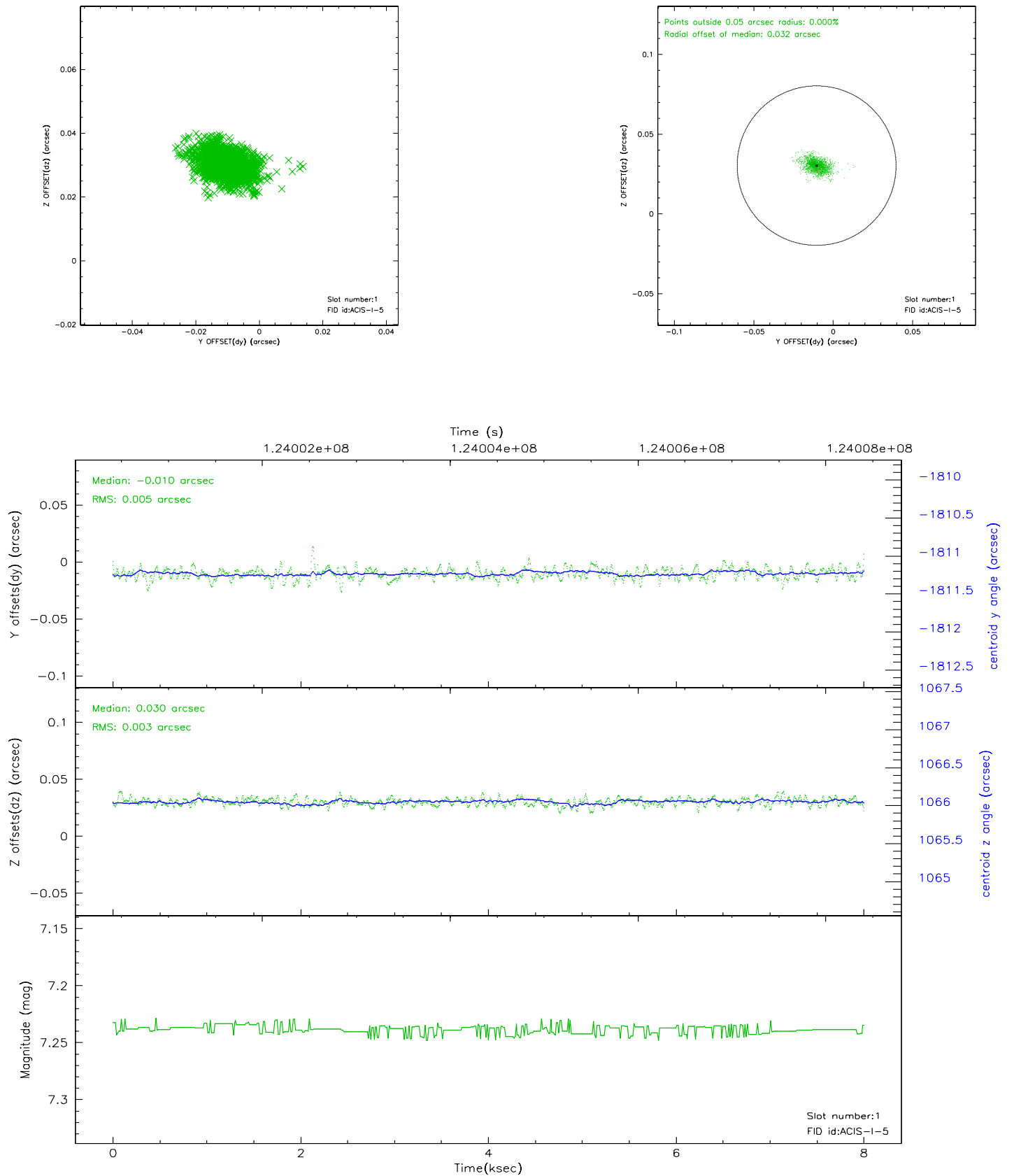


2.5 FID Slots

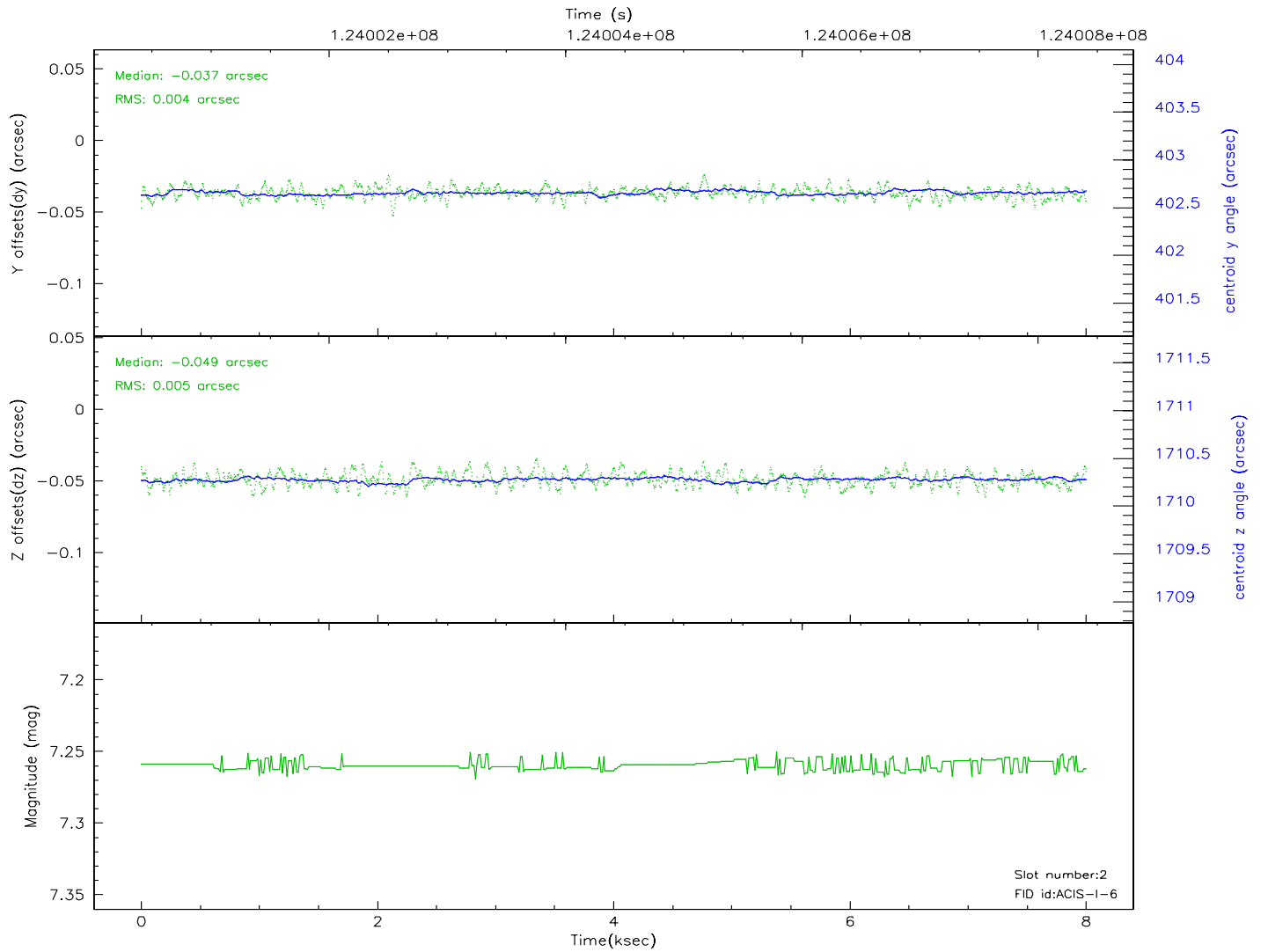
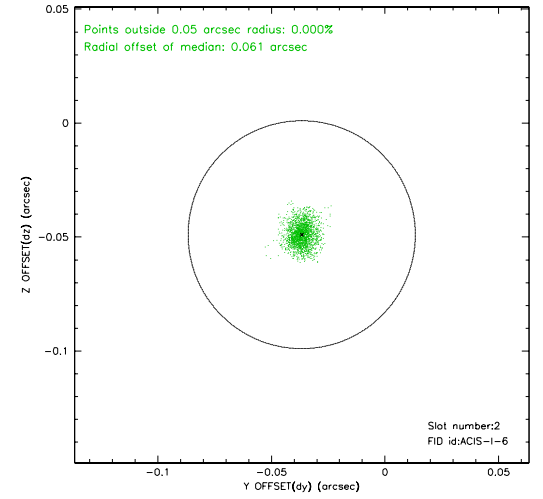
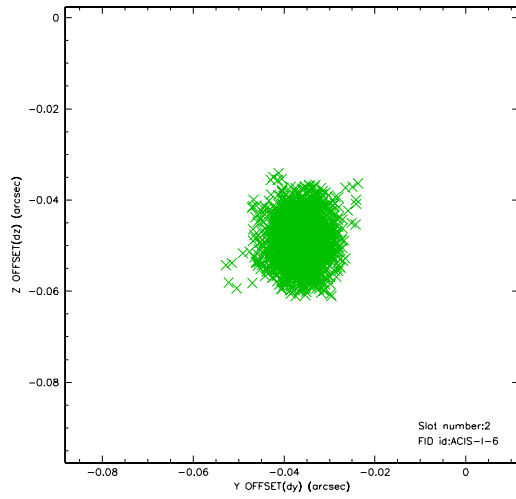
2.5.1 Slot 0



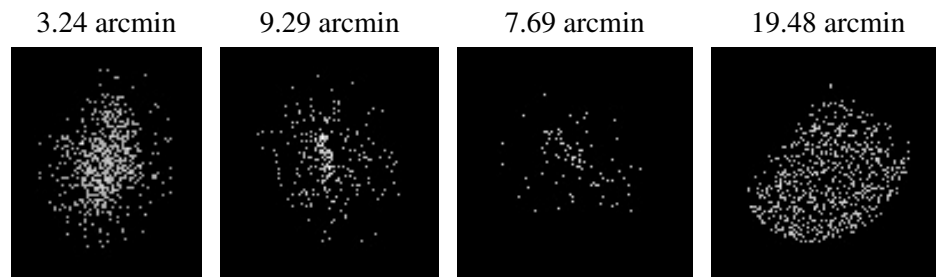
2.5.2 Slot 1



2.5.3 Slot 2



3 Point Sources



A Summary

A.1 Status

V&V Scientist	Beth Sundheim
V&V Date (YYYY-MM-DD)	2007.01.21
V&V Edition	1
V&V Disposition and Status	OK
V&V Charge Time	7.561

A.2 Comments