

V&V Reference Report

L2 ASCDS Version : 8.4.5

Observation 2522 - L2 Version 3
Chandra X-Ray Center

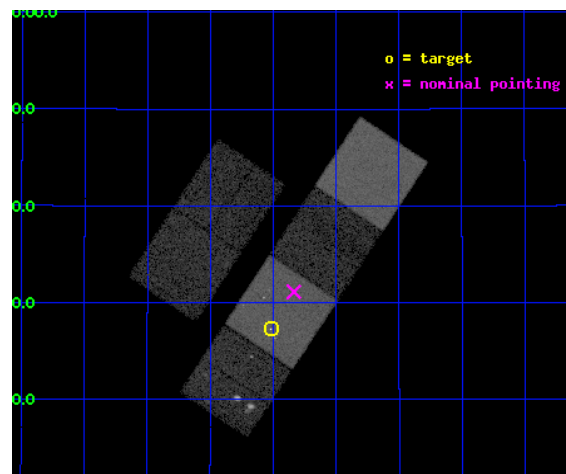
L2 Processing Date : Sep 27 2012

Contents

1	Front	2
2	OBI	3
2.1	OBI	3
2.1.1	Images	3
2.1.2	Bias	3
2.1.3	Parameters	4
2.1.4	Events	4
2.2	Compared Parameters	5
2.3	Aspect	6
2.4	Star Slots	9
2.4.1	Slot 3	9
2.4.2	Slot 4	10
2.4.3	Slot 5	11
2.4.4	Slot 6	12
2.4.5	Slot 7	13
2.5	FID Slots	14
2.5.1	Slot 0	14
2.5.2	Slot 1	15
2.5.3	Slot 2	16
A	Summary	17
A.1	Status	17
A.2	Comments	17

1 Front

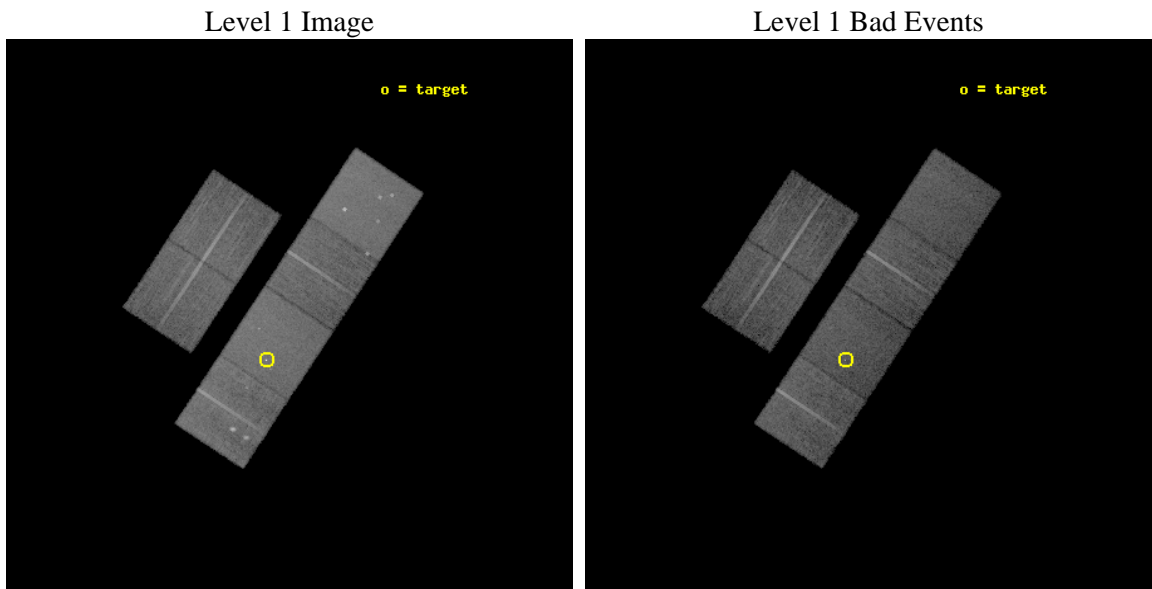
seq_num	200130	Sequence number
obs_id	2522	Observation id
title	ORIGIN OF THE X-RAY EMISSION OF THE PREMAIN SEQUENCE STAR V 410 TAU	
observer	Dr. Peter Predehl	Principal investigator
object	V 410 TAU	Source name
dtcycle	0	
cycle	P	events from which exps? Prim/Second/Both
ra_targ	64.629583	Observer's specified target RA [deg]
dec_targ	28.454444	Observer's specified target Dec [deg]
ra_nom	64.583872046797	Nominal RA [deg]
dec_nom	28.518704279471	Nominal Dec [deg]
roll_nom	123.47528079443	Nominal Roll [deg]
revision	3	Processing version of data
ontime	15116.800014064	Sum of GTIs [s]
livetime	14925.381990041	Livetime [s]
ontime2	15116.800014064	Sum of GTIs [s]
ontime3	15116.800014064	Sum of GTIs [s]
ontime5	15116.800014064	Sum of GTIs [s]
ontime6	15116.800014064	Sum of GTIs [s]
ontime7	15116.800014064	Sum of GTIs [s]
ontime8	15116.800014064	Sum of GTIs [s]
l2events	158209	Number of level 2 events



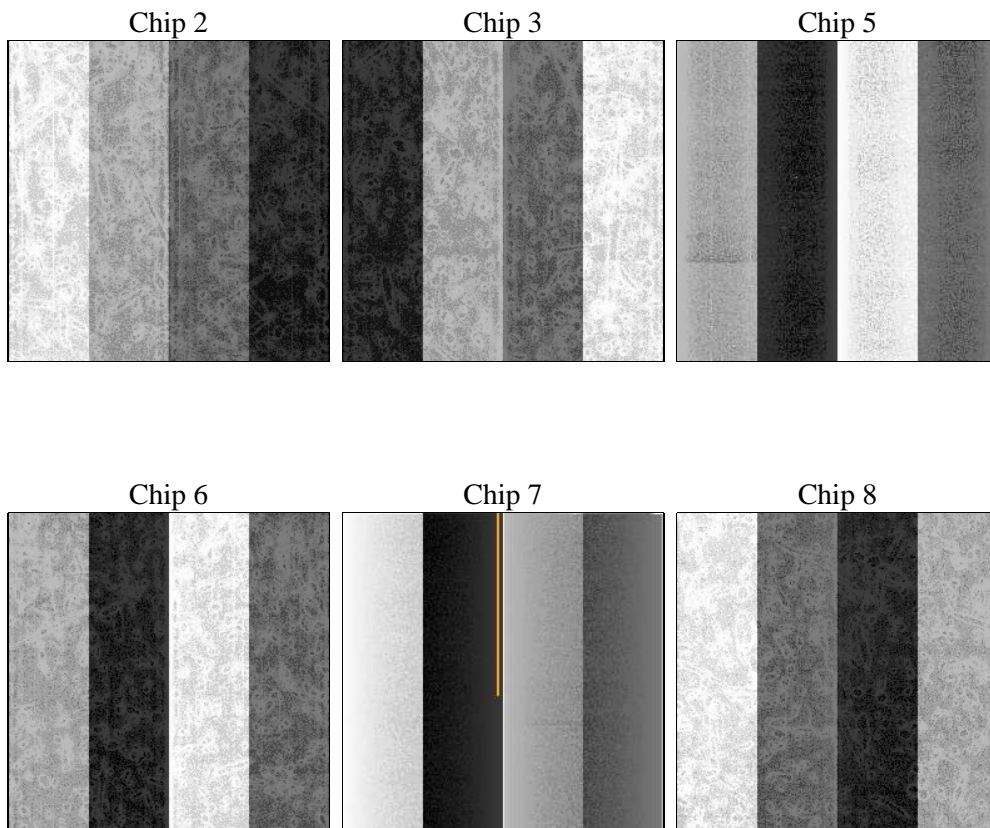
2 OBI

2.1 OBI

2.1.1 Images



2.1.2 Bias



2.1.3 Parameters

obi_num	0	Obi number	sched_exp_time	15000.000000	[s] Scheduled observation exposure time
ascdsver	8.4.5	Processing system revision	ontime	15116.800014064	Sum of GTIs [s]
caldsver	4.5.1.1	 	ontime2	15116.800014064	Sum of GTIs [s]
date	2012-09-27T02:44:54	Date and time of file creation	ontime3	15116.800014064	Sum of GTIs [s]
revision	3	Processing version of data	ontime5	15116.800014064	Sum of GTIs [s]
			ontime6	15116.800014064	Sum of GTIs [s]
			ontime7	15116.800014064	Sum of GTIs [s]
			ontime8	15116.800014064	Sum of GTIs [s]
			l1events	729129	Number of level 1 events

2.1.4 Events

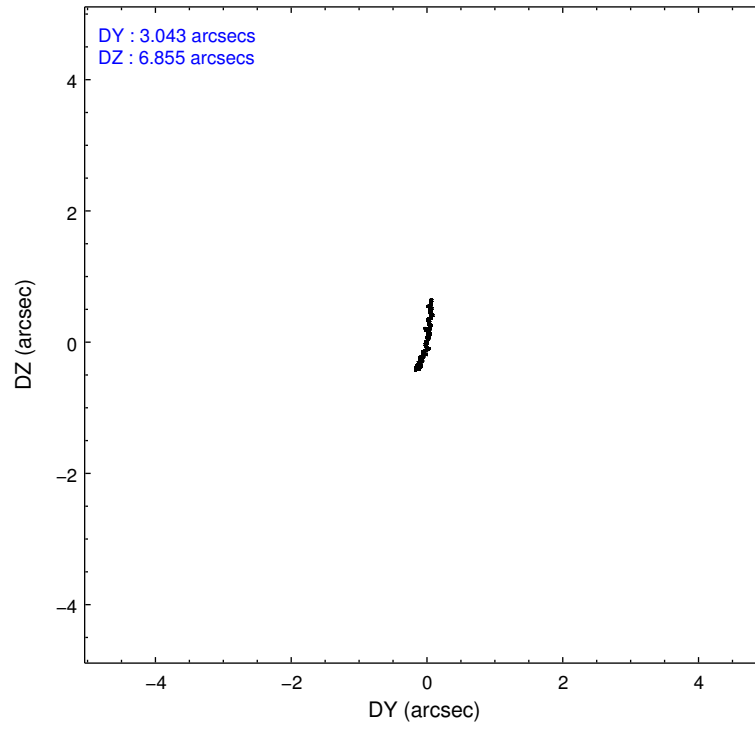
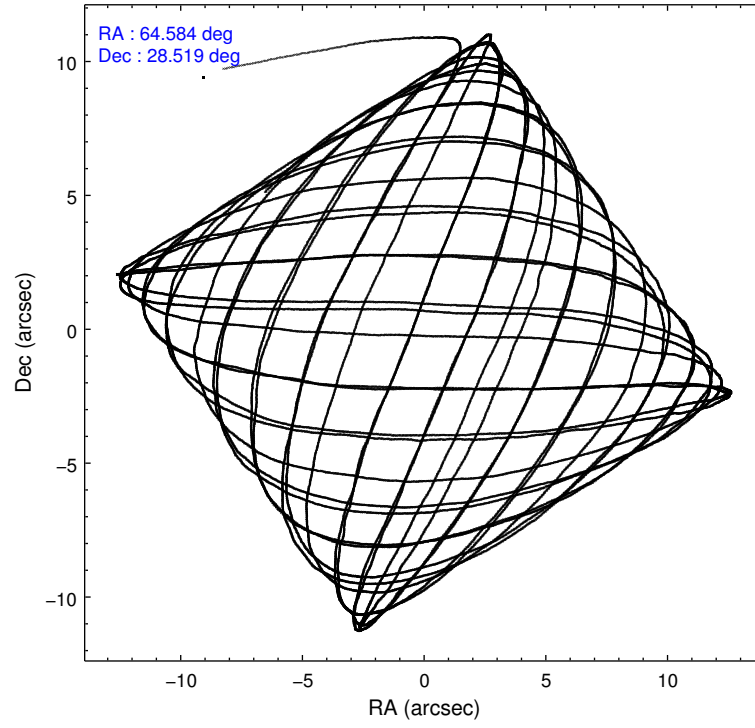
	ccd 2	ccd 3	ccd 5	ccd 6	ccd 7	ccd 8		ccd 2	ccd 3	ccd 5	ccd 6	ccd 7	ccd 8
level 1 events	105375	99459	149825	102992	138767	132711	grade 0 events	4679	4802	9337	4455	6664	11773
rejected events	94408	88543	84351	92132	81504	103303		4%	4%	6%	4%	4%	8%
rejected %	89%	89%	56%	89%	58%	77%	grade 1 events	44	54	174	35	196	81
								0%	0%	0%	0%	0%	0%
							grade 2 events	2611	2381	19358	2344	12188	6274
								2%	2%	12%	2%	8%	4%
							grade 3 events	1118	1145	2808	1169	5597	2998
								1%	1%	1%	1%	4%	2%
							grade 4 events	1044	1111	2709	1082	5612	2804
								0%	1%	1%	1%	4%	2%
							grade 5 events	3735	4086	11174	4443	13021	5788
								3%	4%	7%	4%	9%	4%
							grade 6 events	2105	2112	35000	2391	29996	6777
								1%	2%	23%	2%	21%	5%
							grade 7 events	90039	83768	69265	87073	65493	96216
								85%	84%	46%	84%	47%	72%

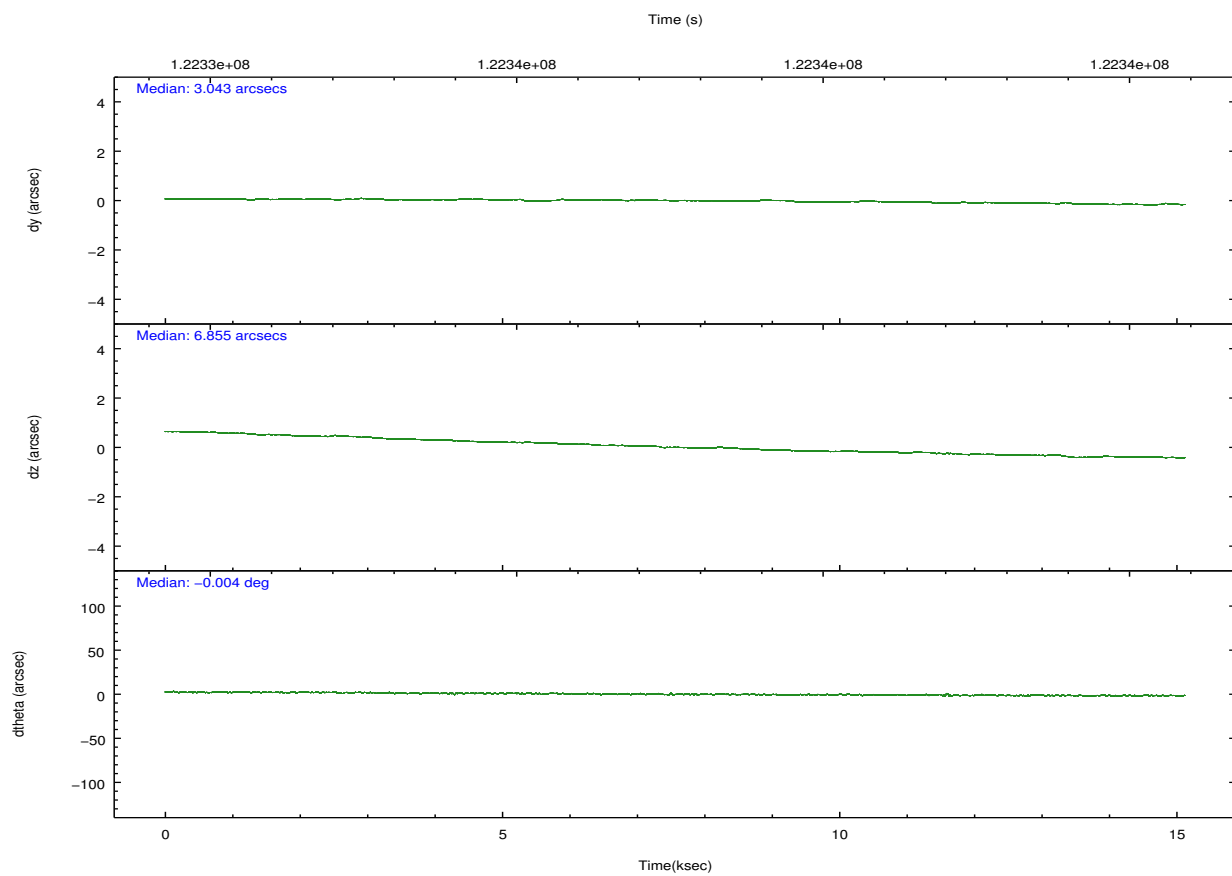
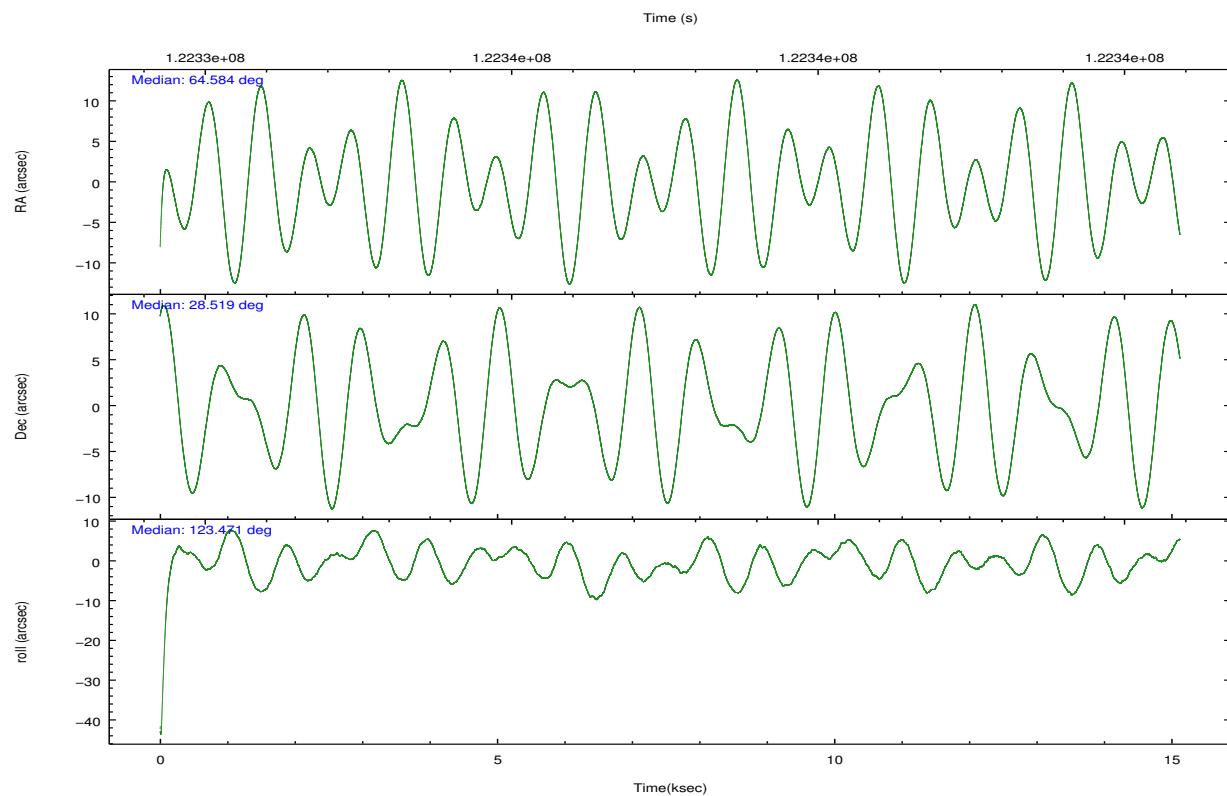
2.2 Compared Parameters

Parameter	Planned	Actual
Instrument	ACIS	ACIS
Detector	ACIS-235678	ACIS-235678
Grating	NONE	NONE
Data mode	FAINT	FAINT
Observation mode	POINTING	POINTING
[deg] Pointing RA	64.611793	64.58387204679717
[deg] Pointing Dec	28.506779	28.51870427947063
[deg] Pointing Roll	123.305361	123.4752807944267
[s] Window start time (MET)	122328064.184000	122328064.184000
[s] Window stop time (MET)	122360464.184000	122360464.184000
[mm] SIM focus pos	-0.684267	-0.6828225247311905
[mm] SIM defocus	0	0.001444936568705701
[mm] SIM translation stage pos	-190.132523	-190.1425803651734
[mm] SIM translation stage offset	0	0.01005778216563158
[s] Observation start time (MET)	122330143.184000	122328693.4181
Observation start date	2001-11-16T20:34:39	2001-11-16T20:11:33
[s] Observation end time (MET)	122345143.184000	122346541.23132
Observation end date	2001-11-17T00:44:39	2001-11-17T01:09:01
Read mode	TIMED	TIMED

Parameter	Planned	Actual
Obspar format version number	7	7
Obspar file type	PREDICTED	ACTUAL
Obspar update status	NONE	UPDATED
Number of optional ACIS chips dropped	0	0
On-chip summing requested	N	N
Subarray requested	NONE	NONE
Alternating exposures requested	N	N
[s] Primary exposure time	0.000000	3.2

2.3 Aspect



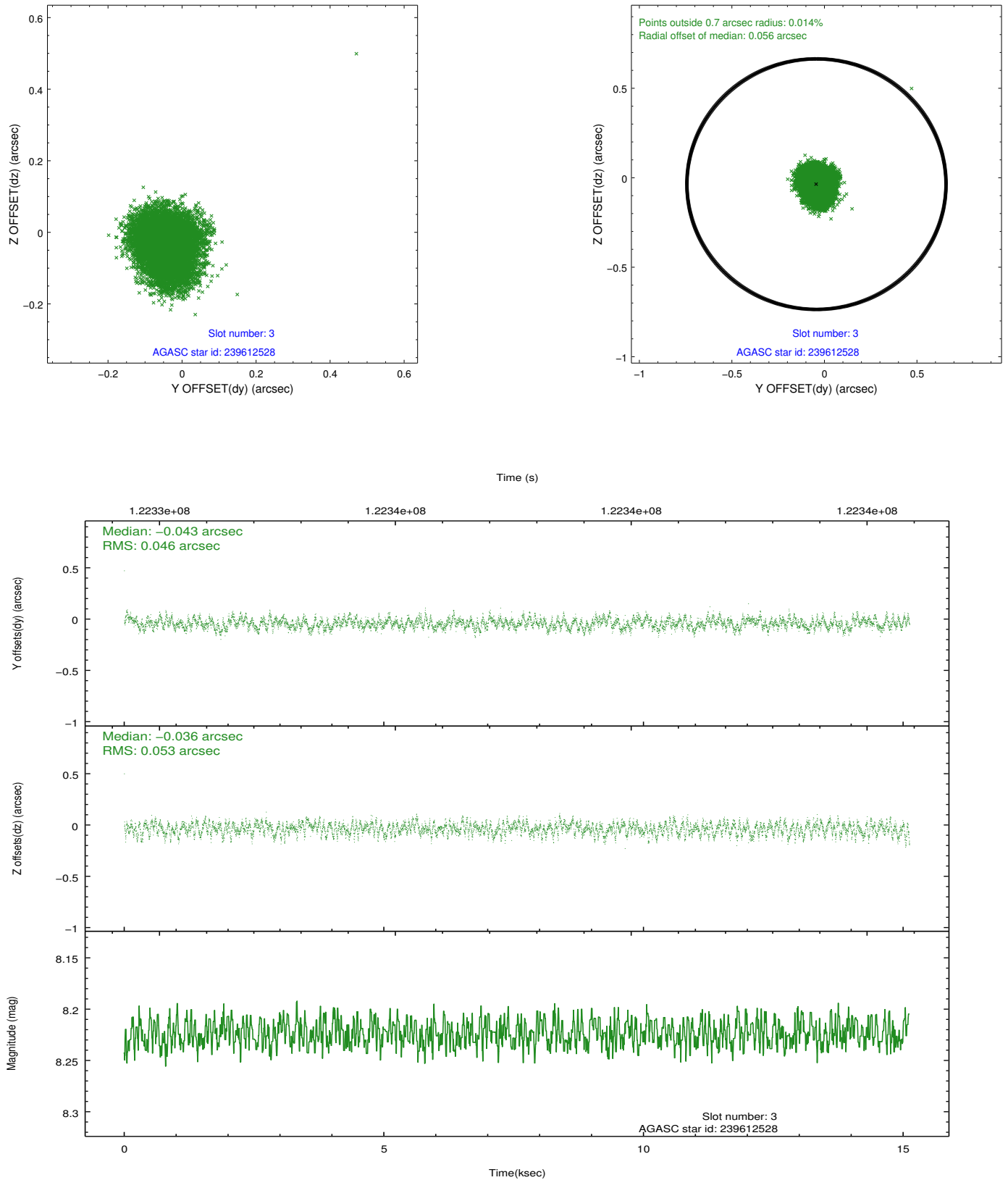


Slot Statistics

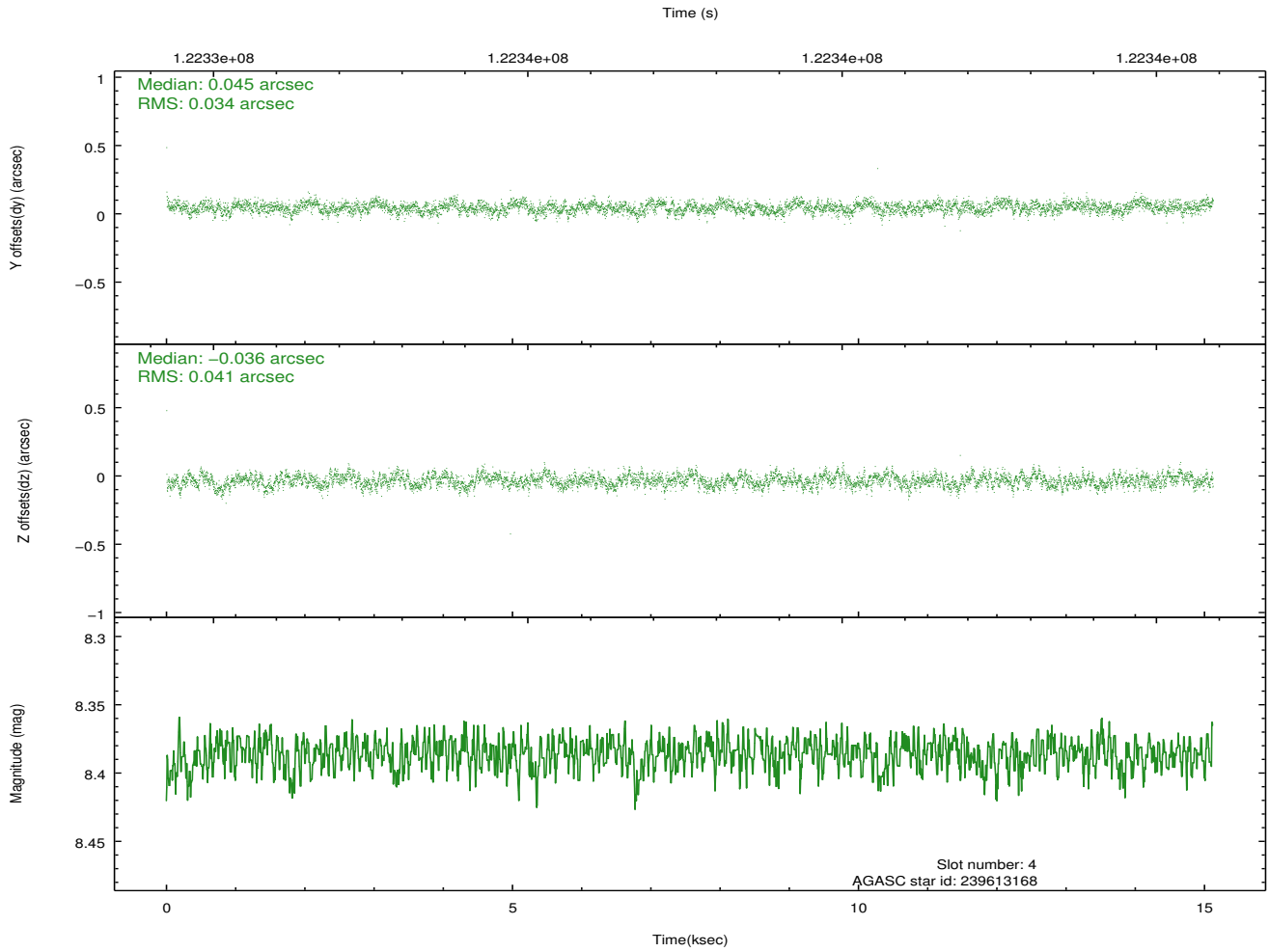
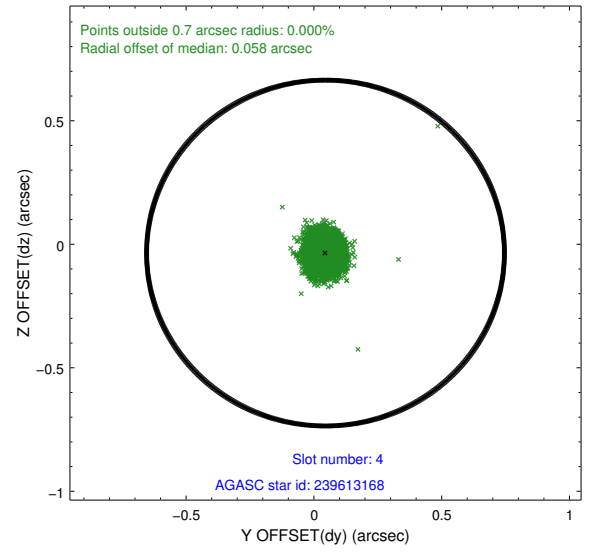
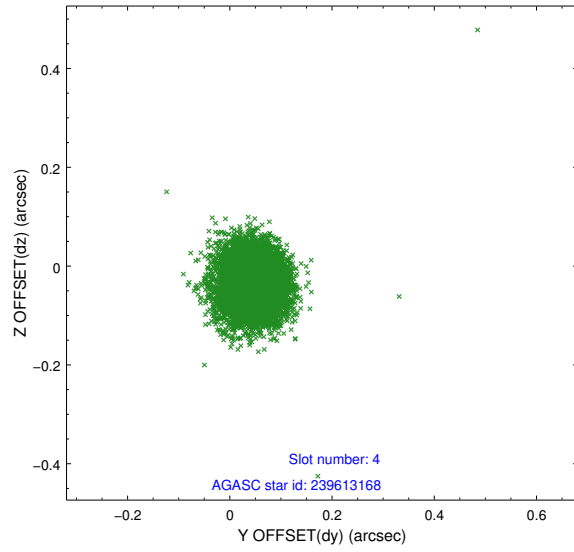
slot	status	id	mag	n_pts	med_dy	med_dz	dr1	dr2	ra	dec	mean_y	mean_z
0	FID	ACIS-S-2	7.11	3689	-0.016	0.011	0.011	0.017	0.000000	0.000000	-755.67	-1728.01
1	FID	ACIS-S-4	7.20	3689	-0.034	0.005	0.006	0.011	0.000000	0.000000	2157.44	180.18
2	FID	ACIS-S-5	7.24	3689	0.019	-0.007	0.010	0.017	0.000000	0.000000	-1808.11	174.15
3	GUIDE	239612528	8.22	7371	-0.043	-0.036	0.076	0.118	65.157445	28.892017	218.85	-2200.24
4	GUIDE	239613168	8.39	7349	0.045	-0.036	0.056	0.089	65.055525	28.814853	161.51	-1779.66
5	GUIDE	239602936	8.78	7376	0.036	0.058	0.068	0.107	65.403432	28.416154	-1641.13	-1919.70
6	GUIDE	239603464	9.02	7375	0.033	-0.029	0.068	0.116	65.495198	28.301805	-2145.00	-1940.28
7	GUIDE	239613792	9.29	7376	-0.071	0.049	0.085	0.143	64.923324	29.257853	1724.26	-2302.45

2.4 Star Slots

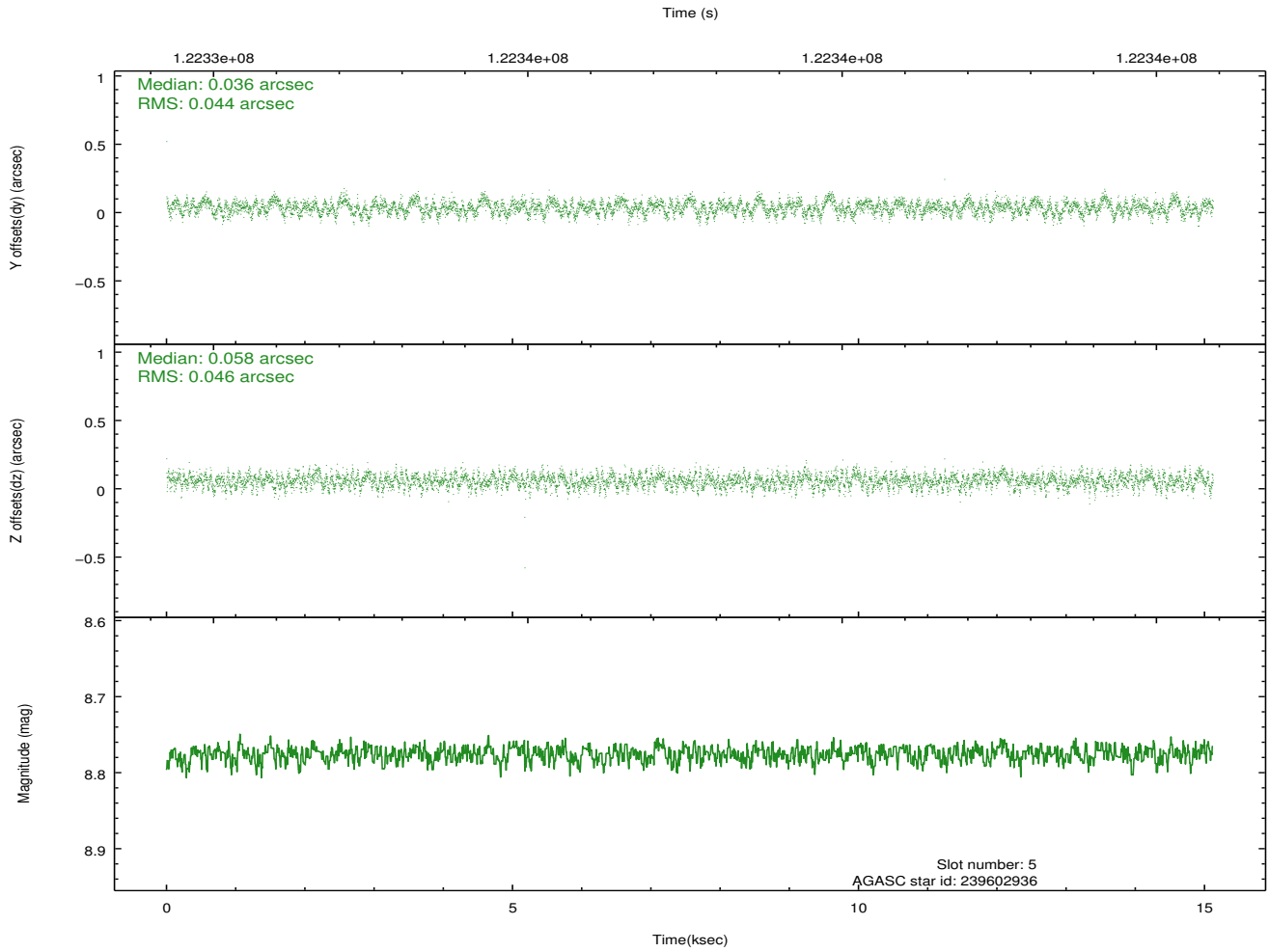
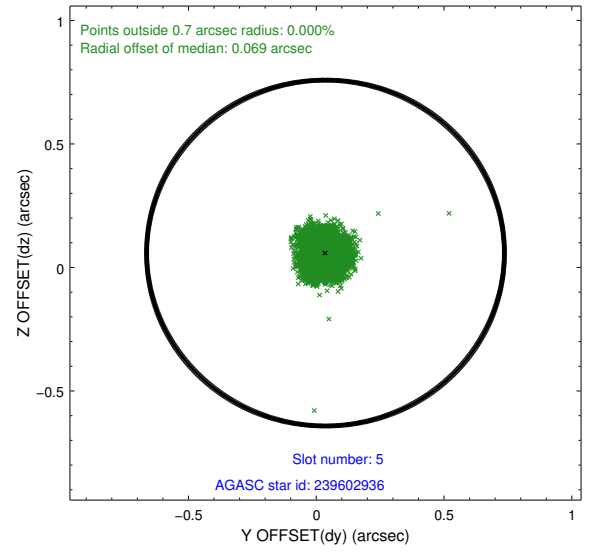
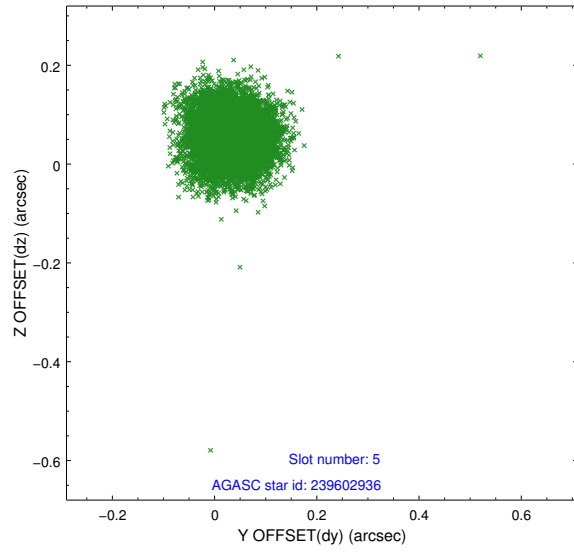
2.4.1 Slot 3



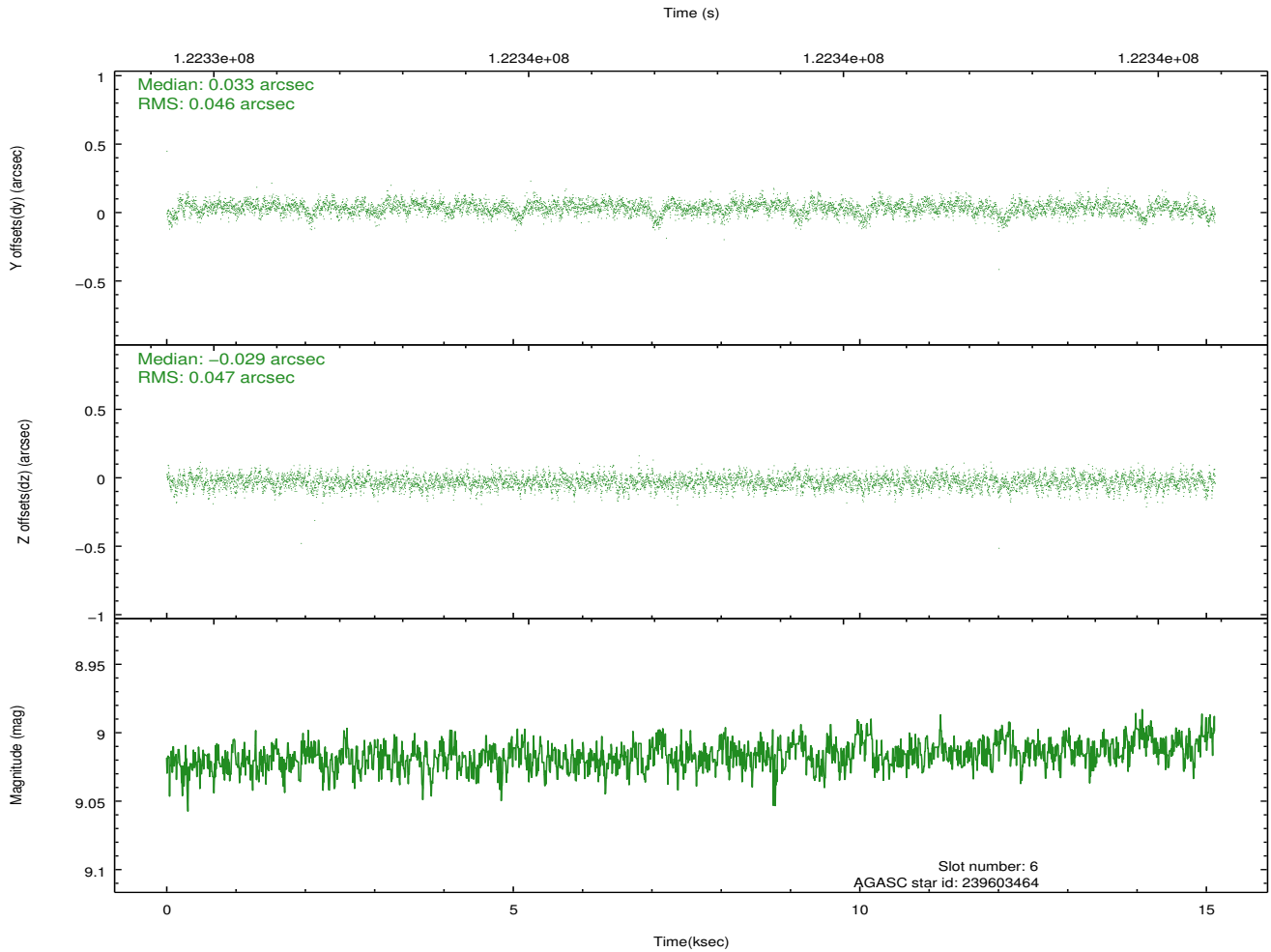
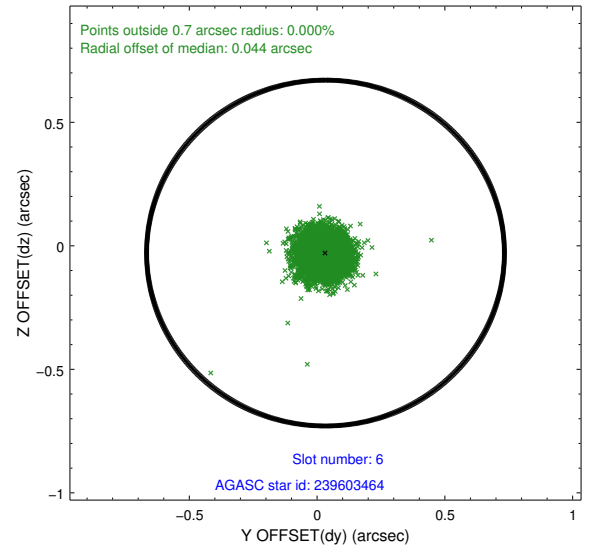
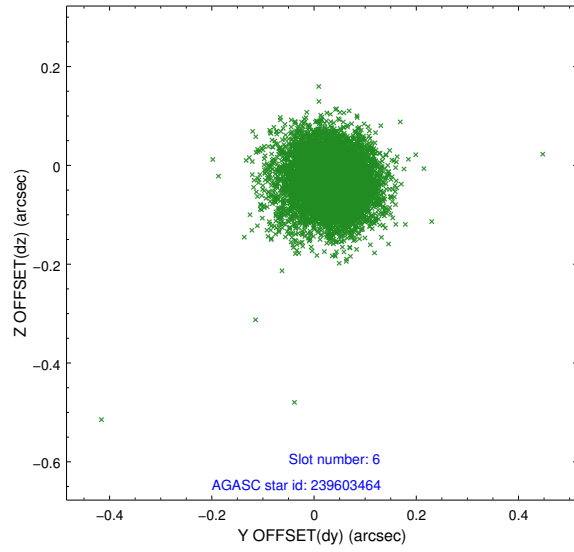
2.4.2 Slot 4



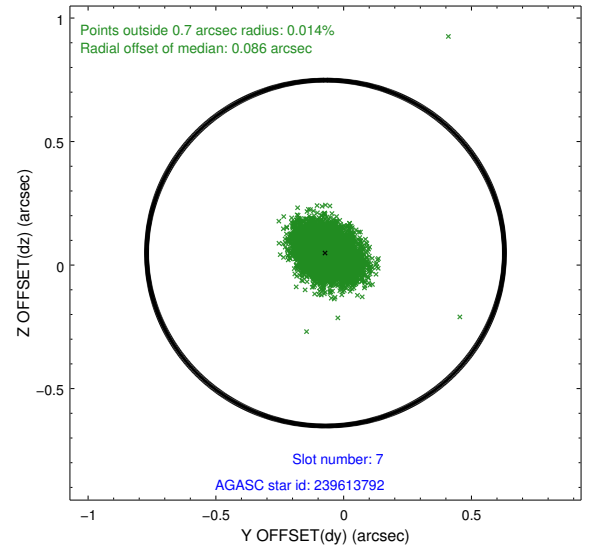
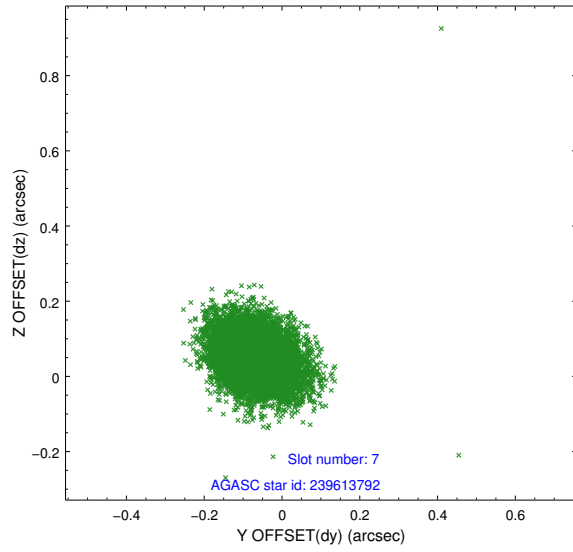
2.4.3 Slot 5



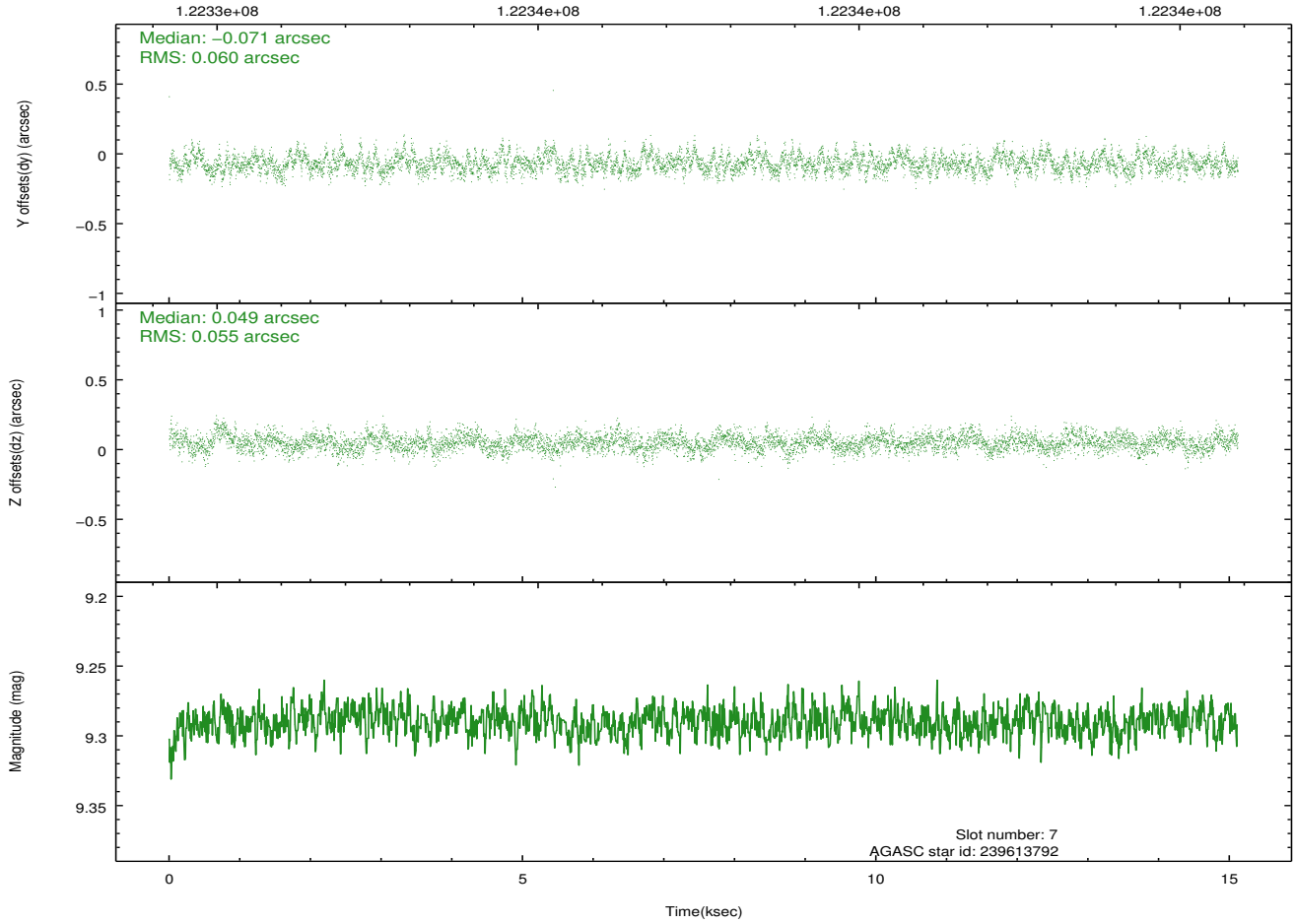
2.4.4 Slot 6



2.4.5 Slot 7

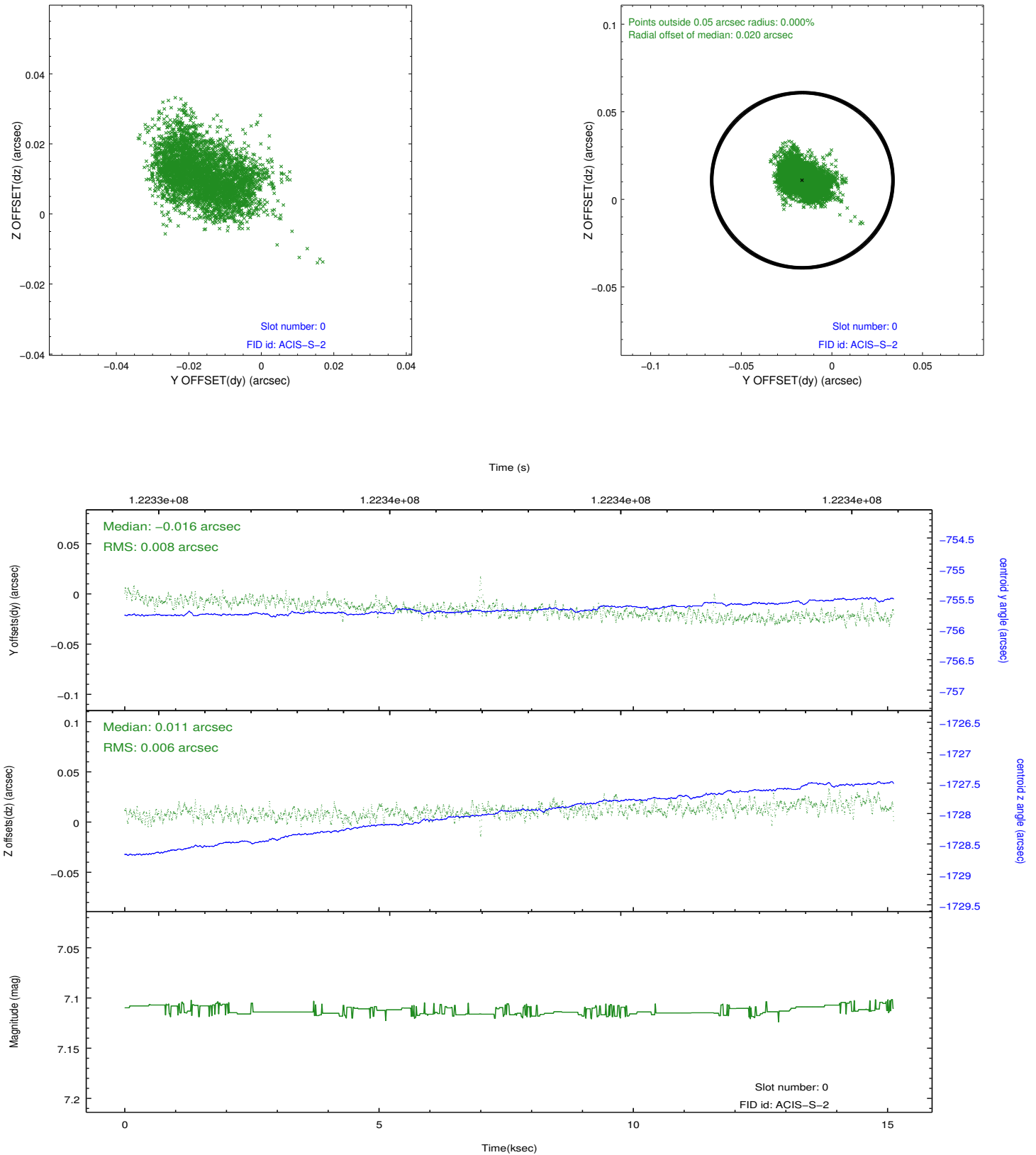


Time (s)

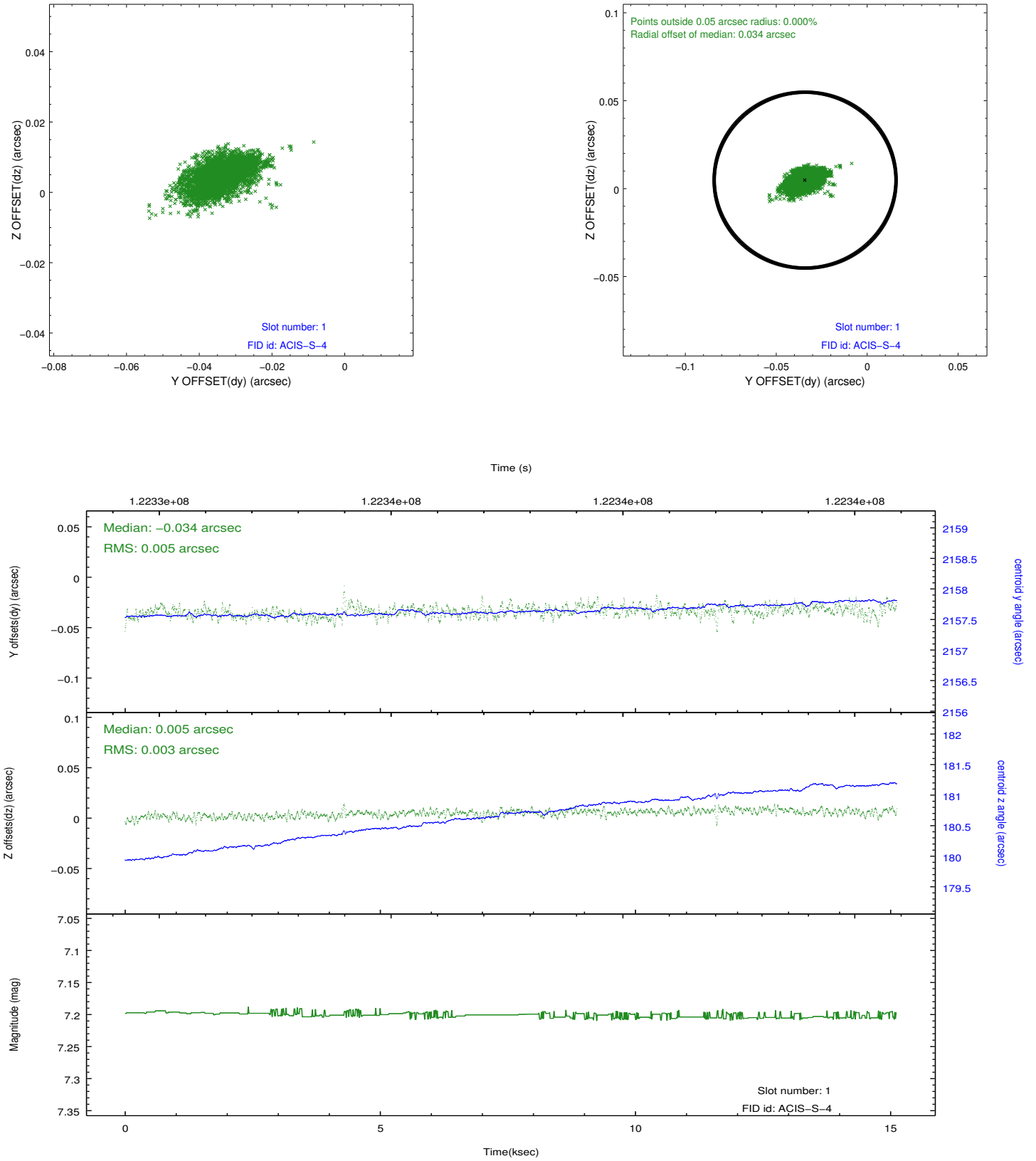


2.5 FID Slots

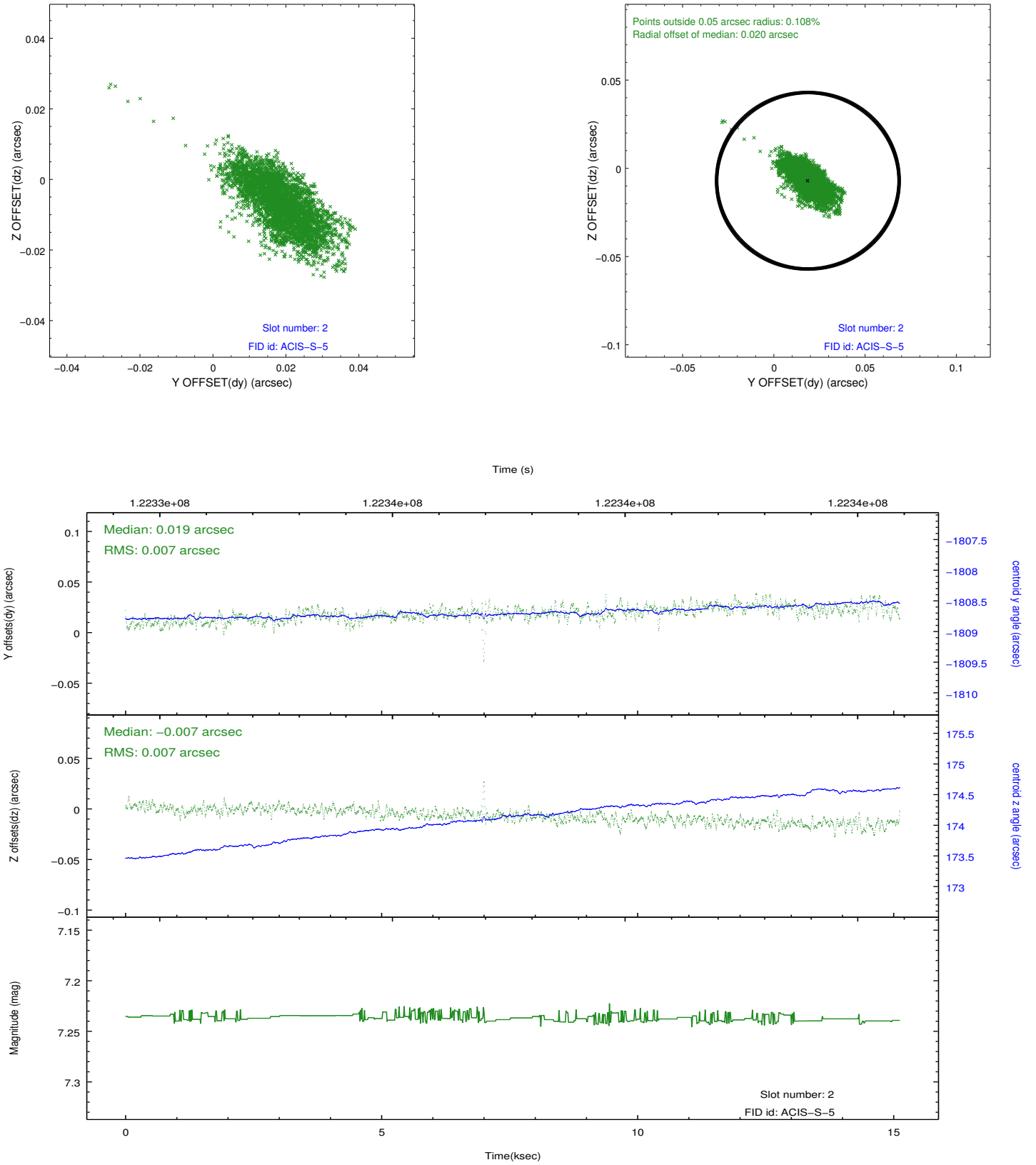
2.5.1 Slot 0



2.5.2 Slot 1



2.5.3 Slot 2



A Summary

A.1 Status

V&V Scientist	Beth Sundheim
V&V Date (YYYY-MM-DD)	2012.09.28
V&V Edition	1
V&V Disposition and Status	OK
V&V Charge Time	15.116

A.2 Comments

Window preference met.