

V&V Reference Report

L2 ASCDS Version : 7.6.9

Observation 2142 - L2 Version 001
Chandra X-Ray Center

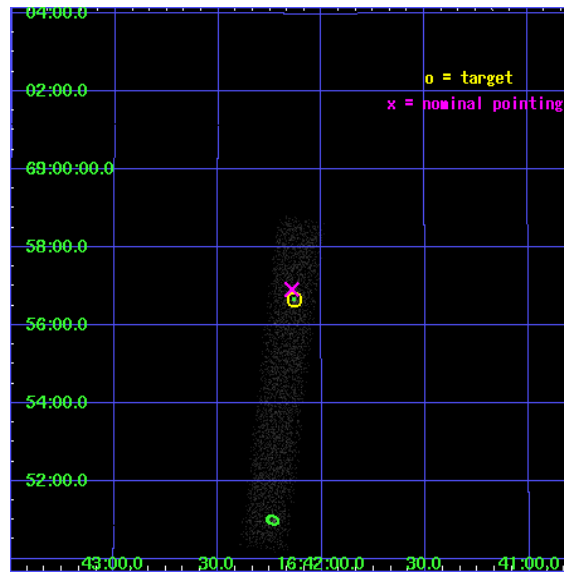
L2 Processing Date : Nov 7 2006

Contents

1	Front	2
2	OBI	3
2.1	OBI	3
2.1.1	Images	3
2.1.2	Bias	3
2.1.3	Parameters	4
2.1.4	Events	4
2.2	Compared Parameters	5
2.3	Aspect	6
2.4	Star Slots	9
2.4.1	Slot 3	9
2.4.2	Slot 4	10
2.4.3	Slot 5	11
2.4.4	Slot 6	12
2.4.5	Slot 7	13
2.5	FID Slots	14
2.5.1	Slot 0	14
2.5.2	Slot 1	15
2.5.3	Slot 2	16
3	Point Sources	17
A	Summary	18
A.1	Status	18
A.2	Comments	18

1 Front

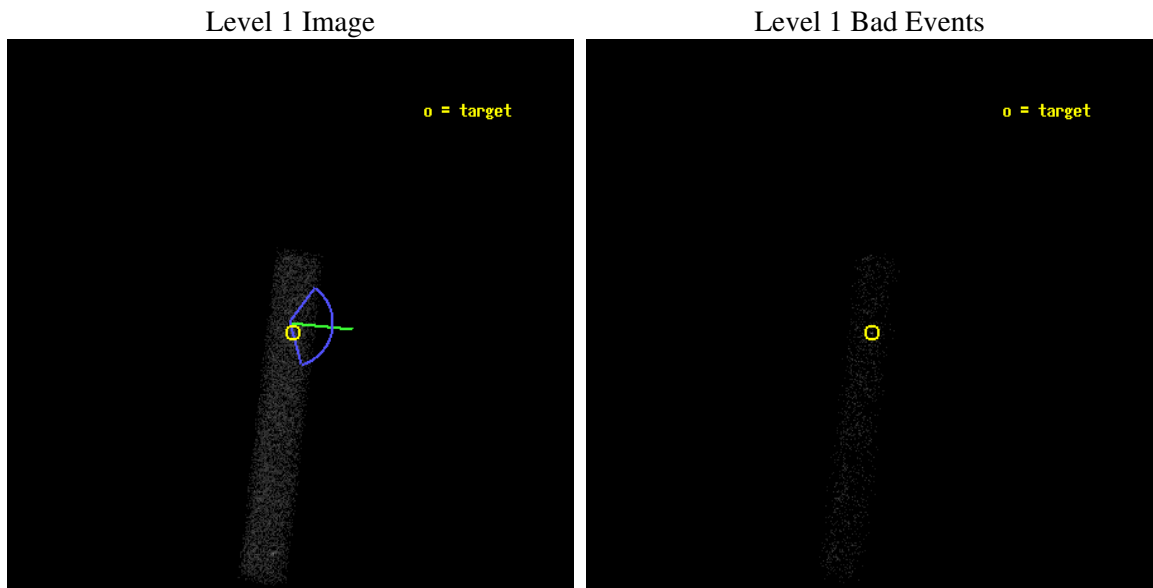
seq_num	700332
obs_id	2142
title	AN UNBIASED SURVEY OF X-RAY AND OPTICAL EMISSION FROM EXTENDED RADIO JETS IN AGN
observer	Dr. Rita Sambruna
object	1642+690
dtcycle	0
cycle	P
ra_targ	250.5325
dec_targ	68.944444
ra_nom	250.53592079532
dec_nom	68.948792490425
roll_nom	96.591174153175
revision	2
ontime	9181.2001368105
livetime	8326.8639006082
ontime7	9181.2001368105
l2events	5816



2 OBI

2.1 OBI

2.1.1 Images



2.1.2 Bias

Chip 7



2.1.3 Parameters

obi_num	0
ascdsver	7.6.9
caldbver	3.2.3
date	2006-11-07T22:40:20
revision	2

sched_exp_time	9000.000000
ontime	9891.5149318576
ontime7	9891.5149318576
l1events	12744

2.1.4 Events

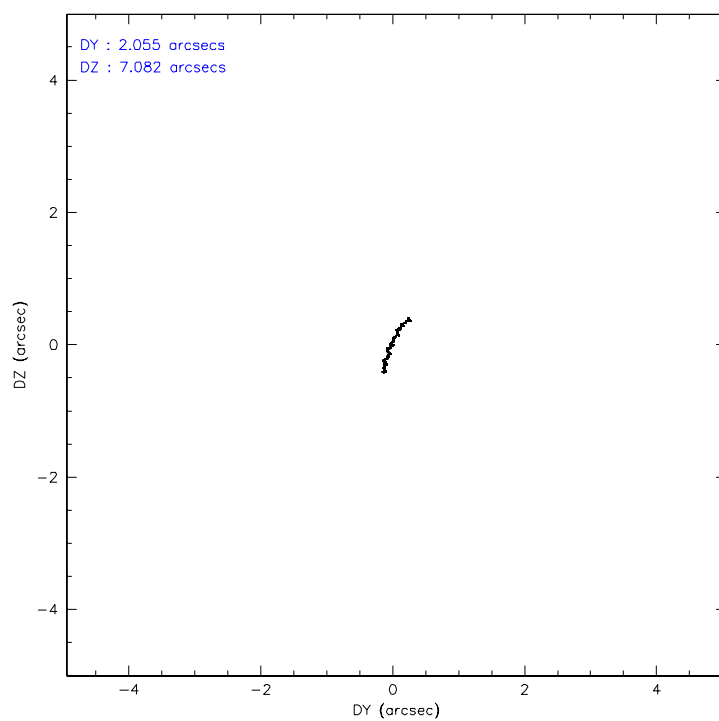
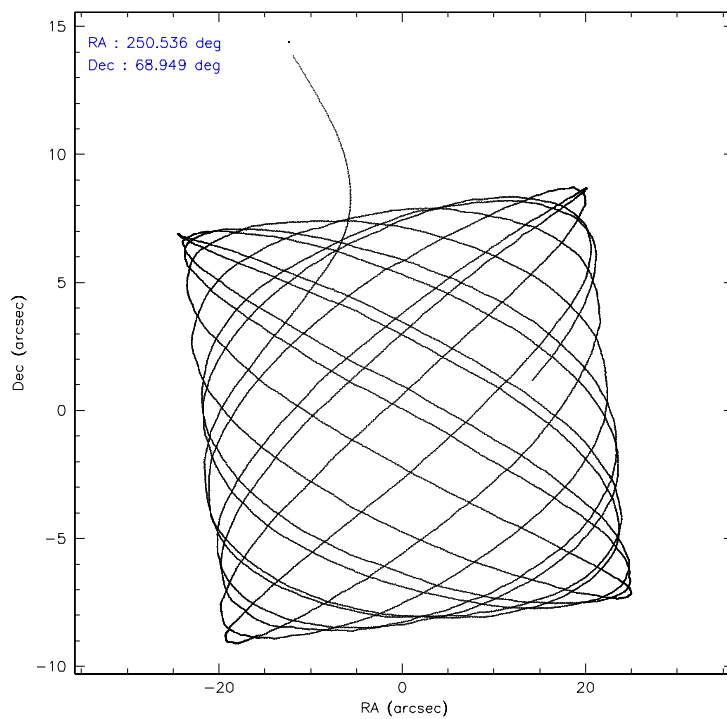
	ccd 7
level 1 events	12744
rejected events	6680
rejected %	52%

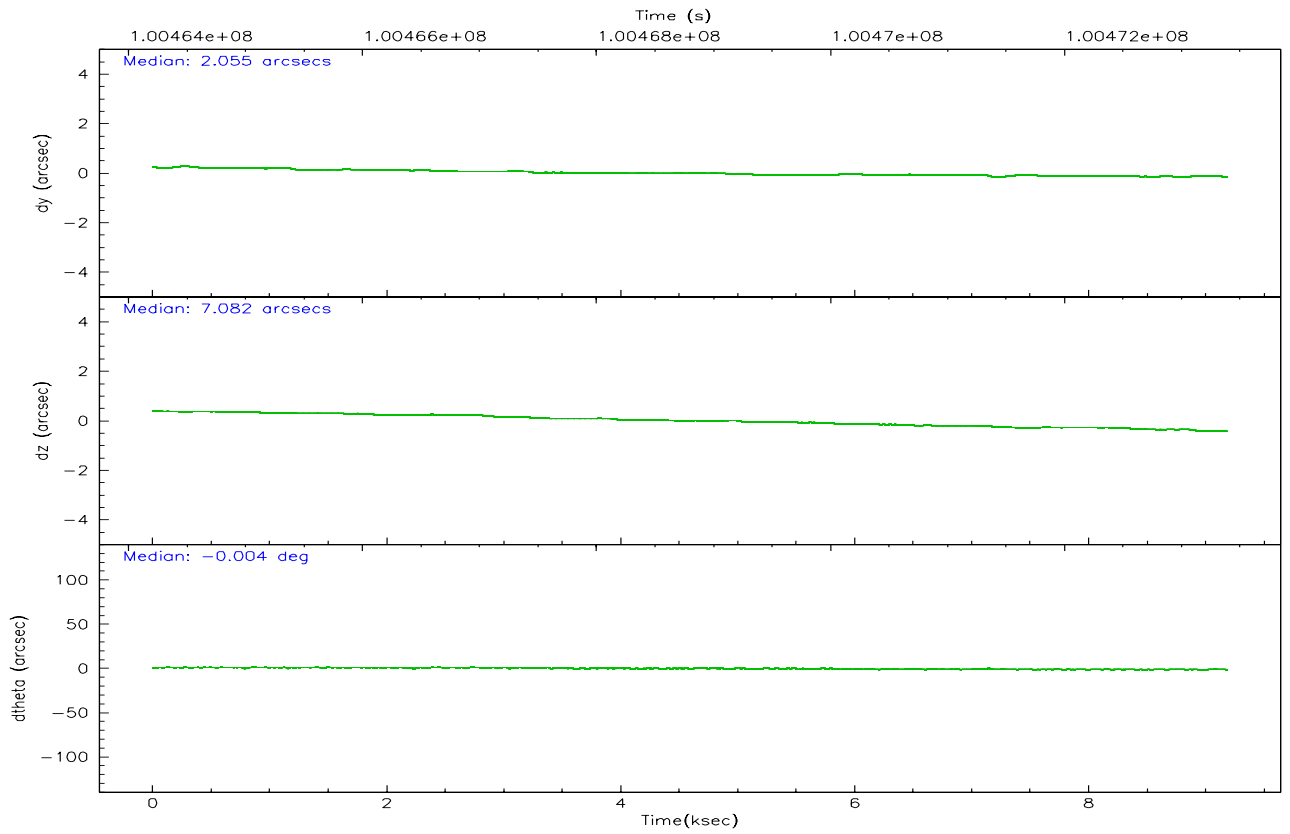
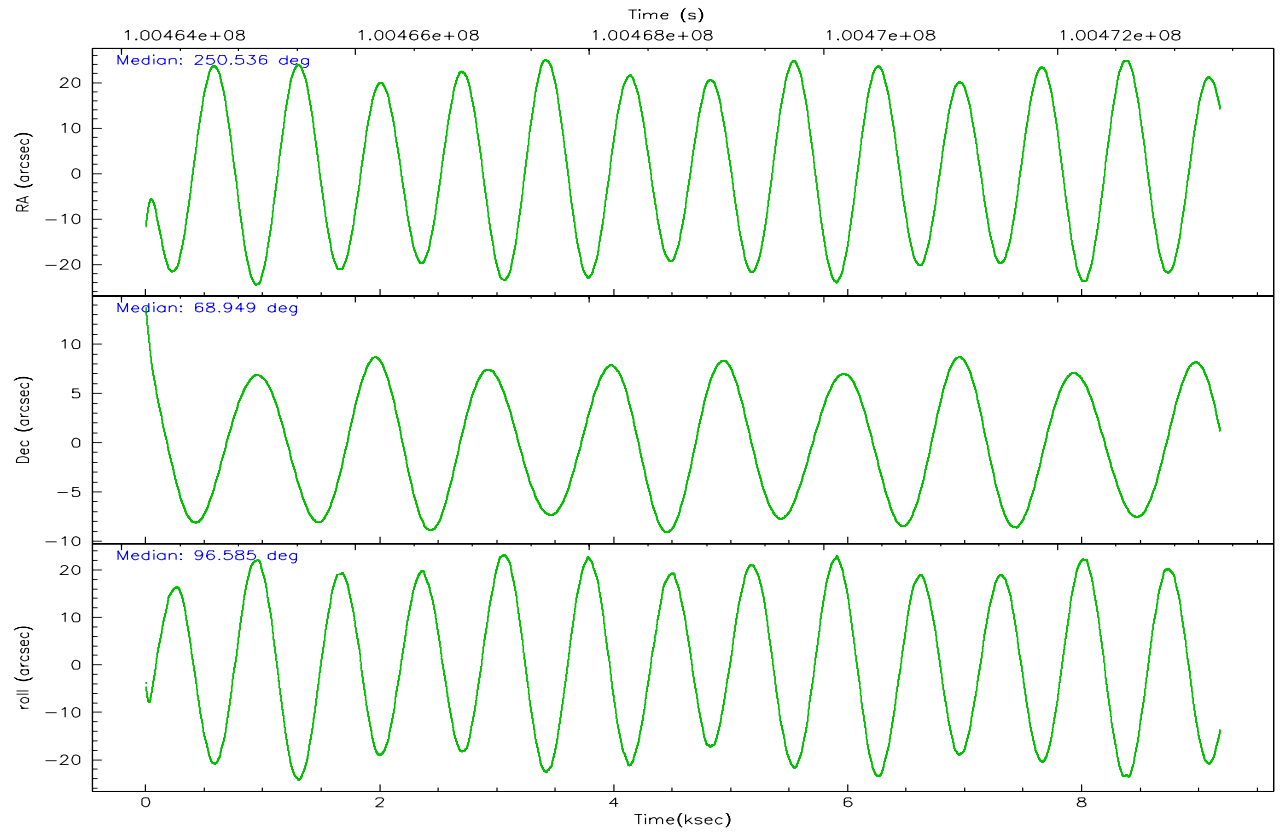
	ccd 7
grade 0 events	831
	6%
grade 1 events	7
	0%
grade 2 events	1477
	11%
grade 3 events	744
	5%
grade 4 events	724
	5%
grade 5 events	806
	6%
grade 6 events	2723
	21%
grade 7 events	5432
	42%

2.2 Compared Parameters

Parameter	Planned	Actual	Parameter	Planned	Actual
Instrument	ACIS	ACIS	Obspar format version number	6	6
Detector	ACIS-7	ACIS-7	Obspar file type	PREDICTED	ACTUAL
Grating	NONE	NONE	Obspar update status	NONE	UPDATED
Data mode	FAINT	FAINT	Number of optional ACIS chips dropped	0	0
Observation mode	POINTING	POINTING	On-chip summing requested	N	N
Pointing RA	250.581818	250.5359207953227	Subarray requested	1/8	1/8
Pointing Dec	68.926969	68.94879249042457	Subarray start row	0	449
Pointing Roll	96.391729	96.59117415317465	Subarray row count	1024	128
Roll angle	100.000000	100.000000	Alternating exposures requested	N	N
Roll tolerance	64.000000	64.000000	Primary exposure time	0.000000	0.4
Roll constraint allows 180D rotation	N	N			
SIM focus pos (mm)	-0.684267	-0.6828225247311905			
SIM defocus (mm)	0	0.001444936568705701			
SIM translation stage pos (mm)	-190.132523	-190.1400660498719			
SIM translation stage offset (mm)	0	0.00754346686406393			
Observation start time	100464392.184000	100463386.92335			
Observation start date	2001-03-08T18:45:28	2001-03-08T18:29:46			
Observation end time	100473392.184000	100474285.74878			
Observation end date	2001-03-08T21:15:28	2001-03-08T21:31:25			
Read mode	TIMED	TIMED			

2.3 Aspect



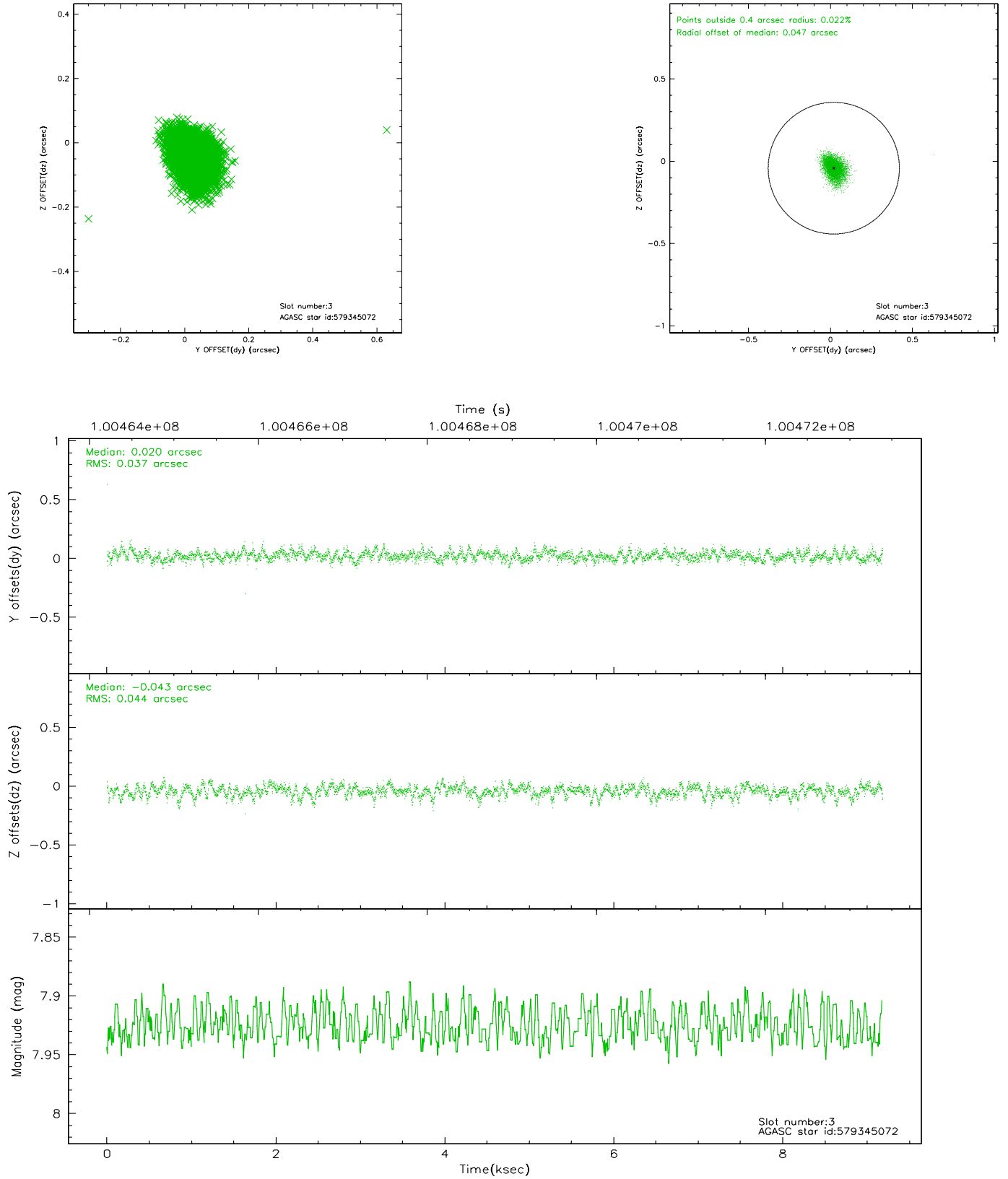


Slot Statistics

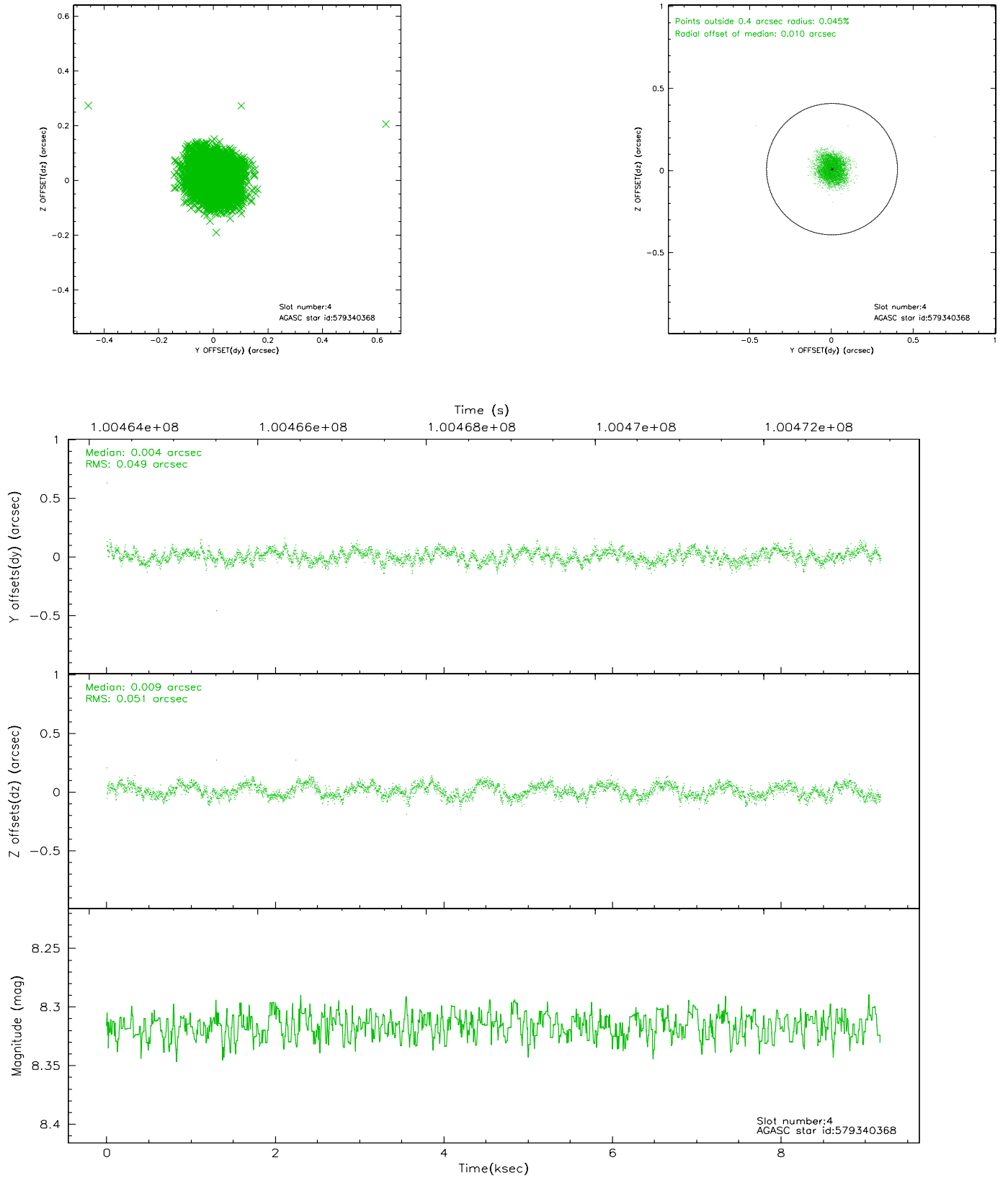
slot	status	id	mag	n_pts	med_dy	med_dz	dr1	dr2	ra	dec	mean_y	mean_z
0	FID	ACIS-S-2	7.11	2240	-0.006	0.022	0.010	0.016	0.000000	0.000000	-754.69	-1728.24
1	FID	ACIS-S-4	7.20	2240	-0.096	-0.003	0.006	0.011	0.000000	0.000000	2158.23	179.61
2	FID	ACIS-S-5	7.23	2239	0.070	-0.010	0.008	0.013	0.000000	0.000000	-1806.69	173.95
3	GUIDE	579345072	7.93	4479	0.020	-0.043	0.059	0.100	251.844716	69.098847	451.50	-1682.62
4	GUIDE	579340368	8.32	4480	0.004	0.009	0.075	0.114	251.597969	69.330258	1310.35	-1446.31
5	GUIDE	579357080	8.40	4477	0.055	0.029	0.063	0.100	249.808649	68.321045	-2046.45	1263.33
6	GUIDE	579340848	9.07	4477	-0.030	0.010	0.073	0.120	249.808213	69.050659	559.31	939.50
7	GUIDE	579340736	9.04	4478	-0.049	-0.003	0.064	0.106	249.397116	69.321462	1593.82	1337.26

2.4 Star Slots

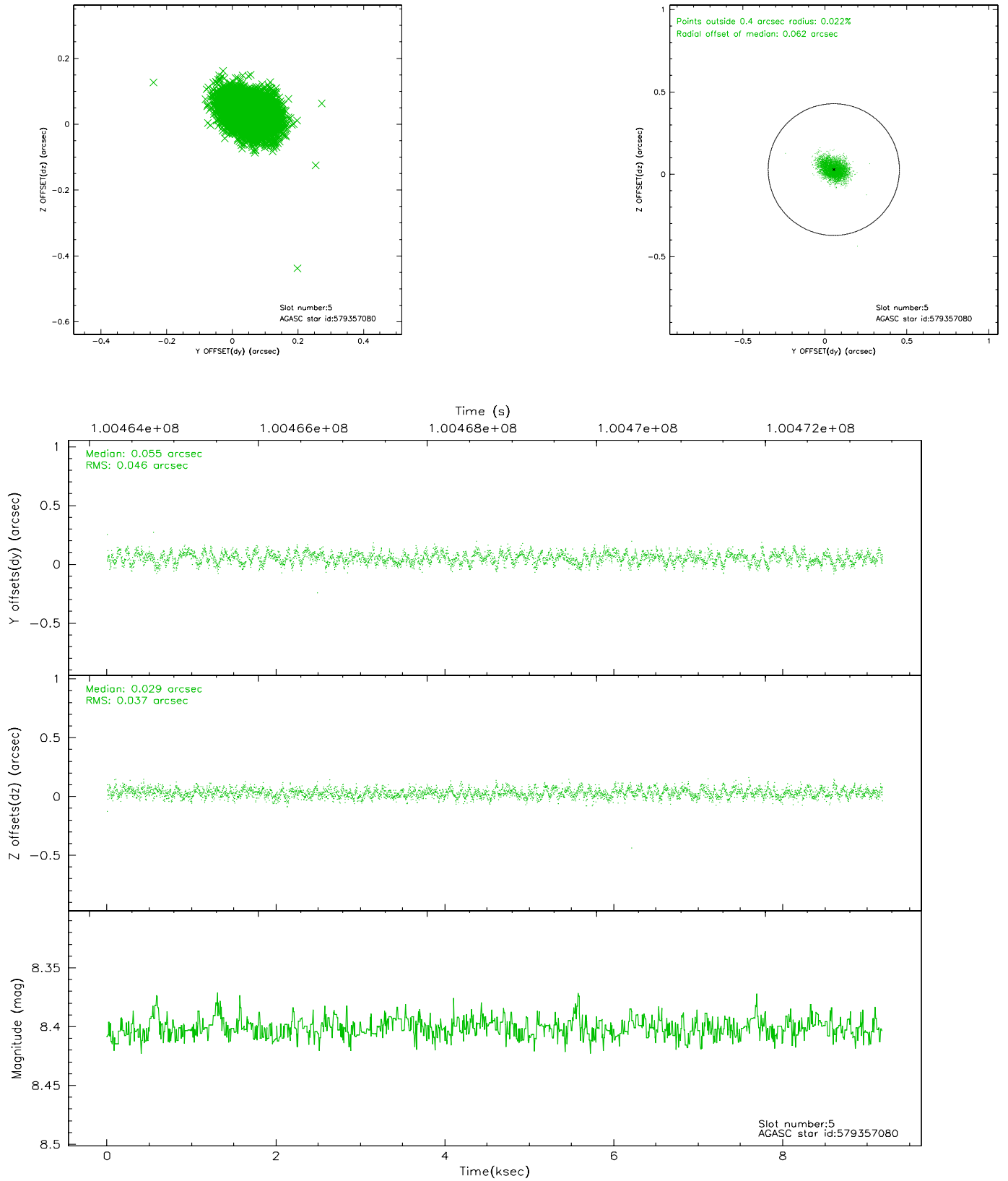
2.4.1 Slot 3



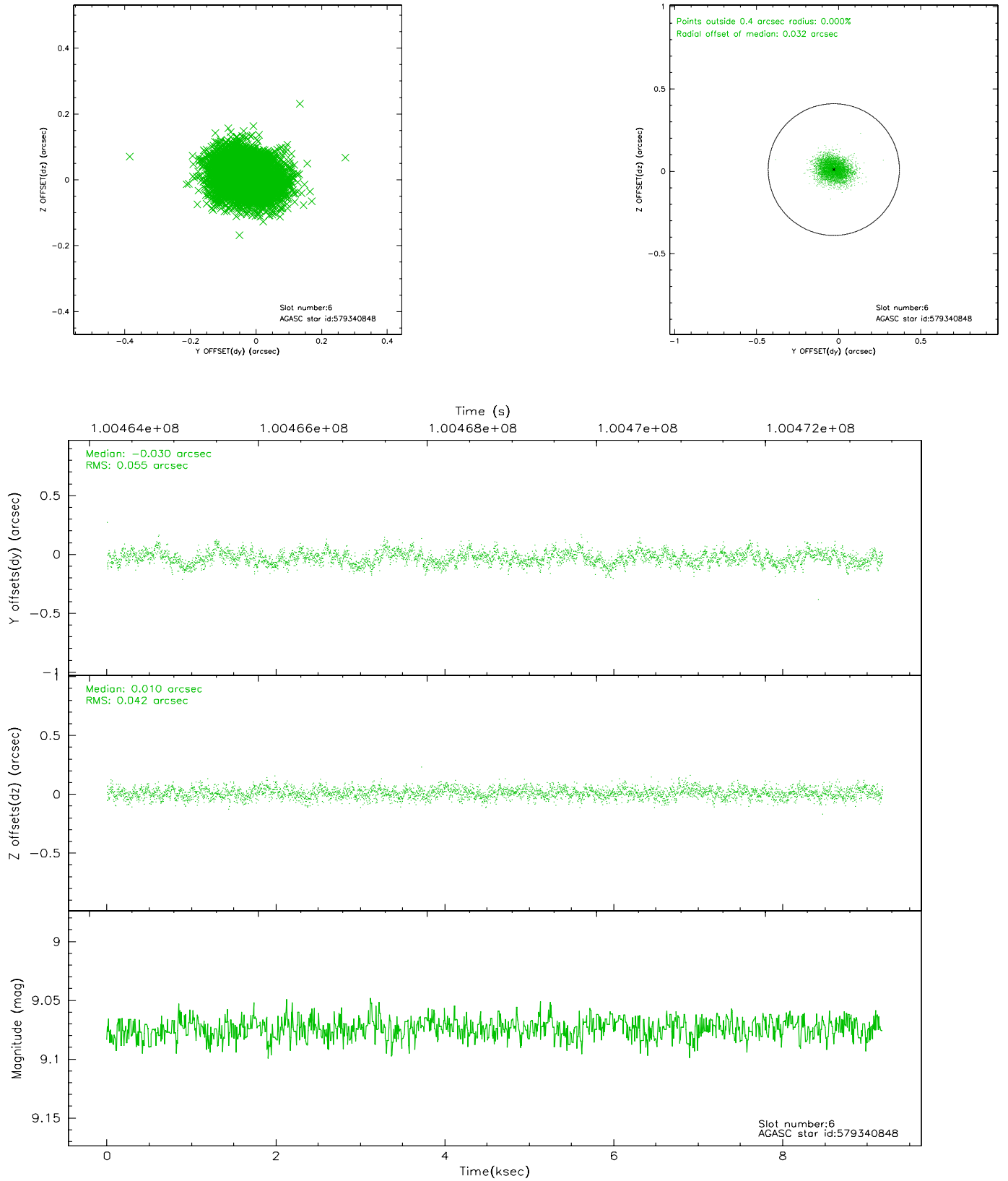
2.4.2 Slot 4



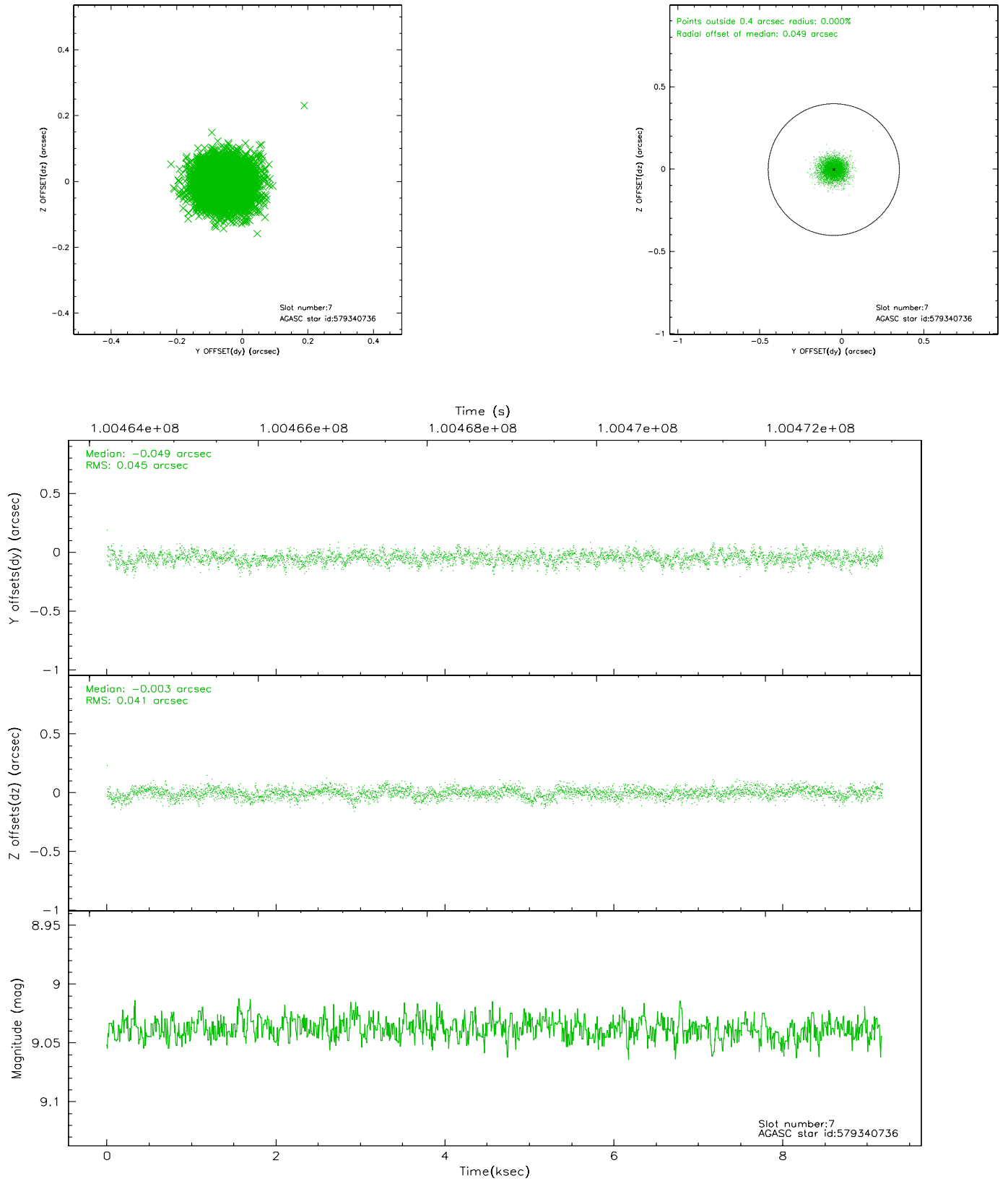
2.4.3 Slot 5



2.4.4 Slot 6

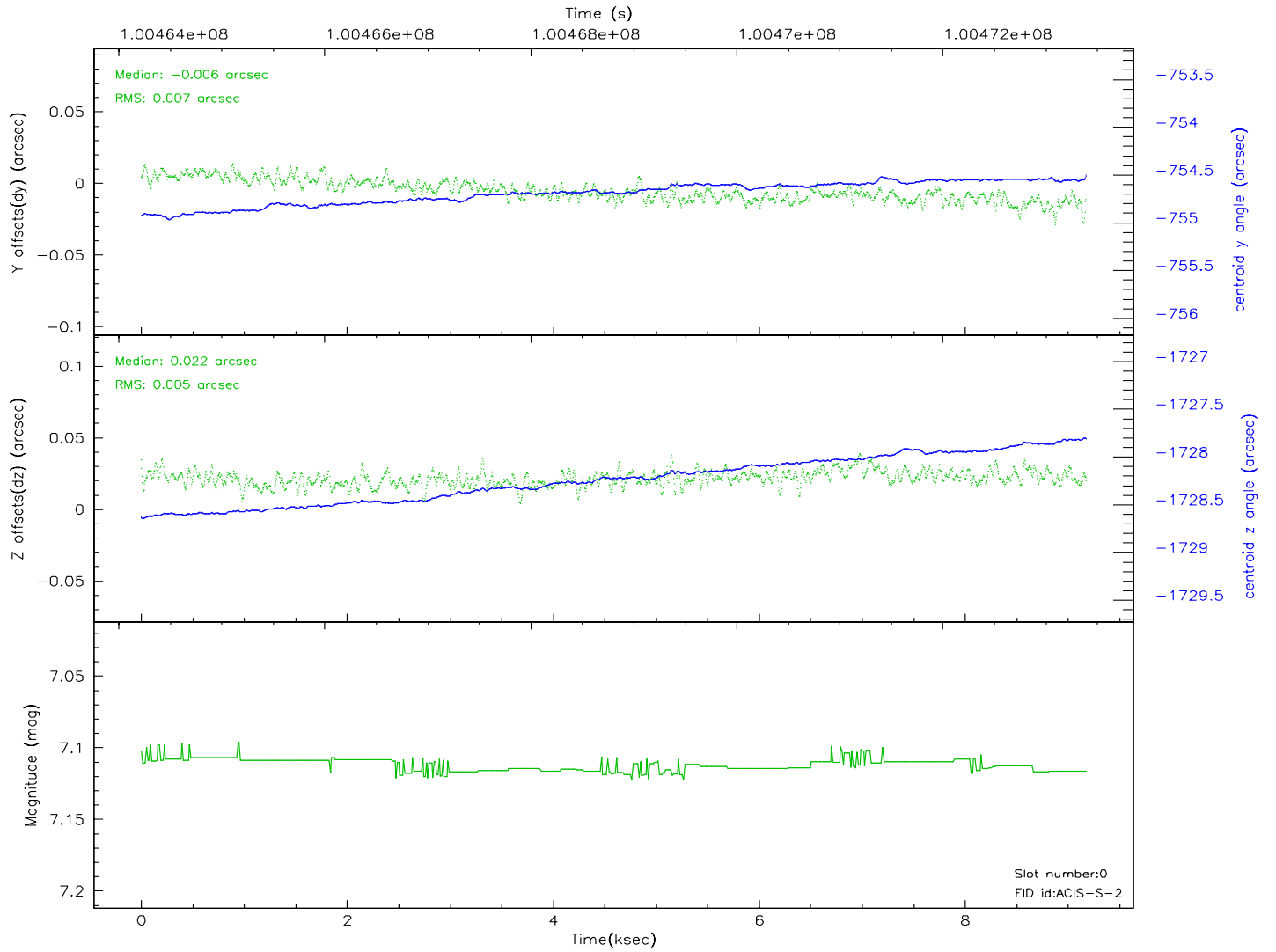
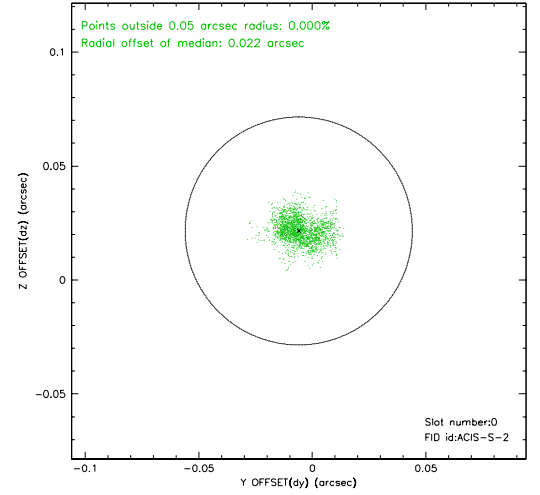
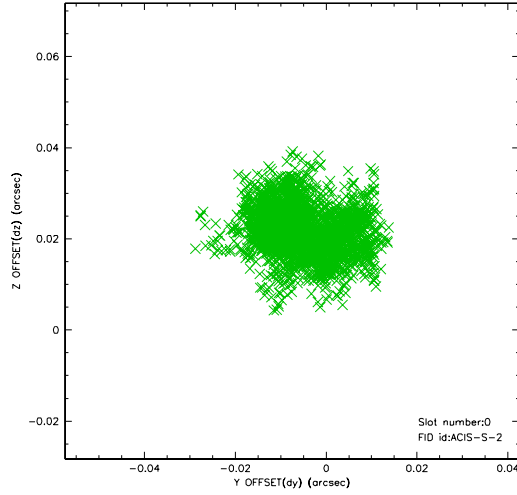


2.4.5 Slot 7

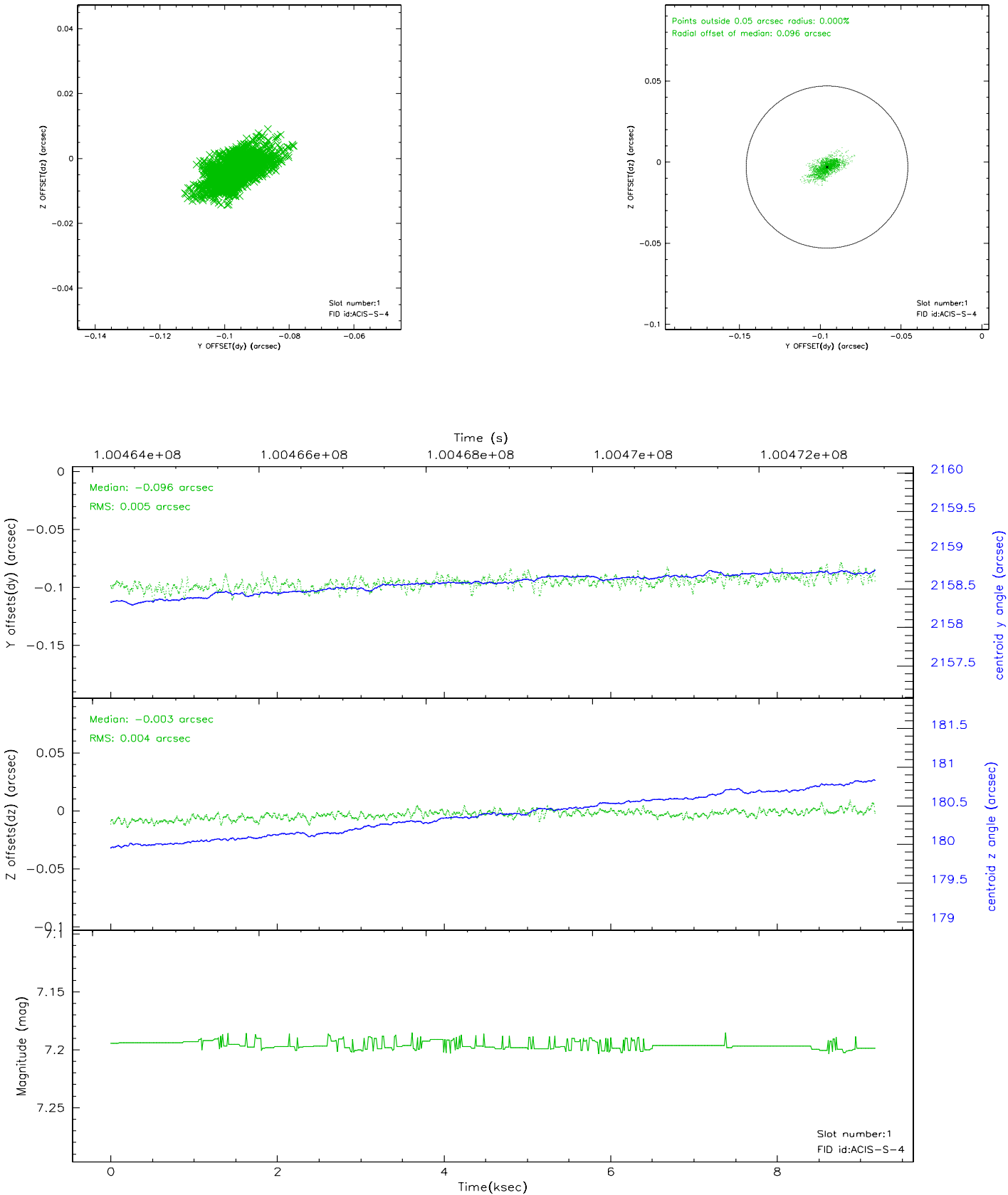


2.5 FID Slots

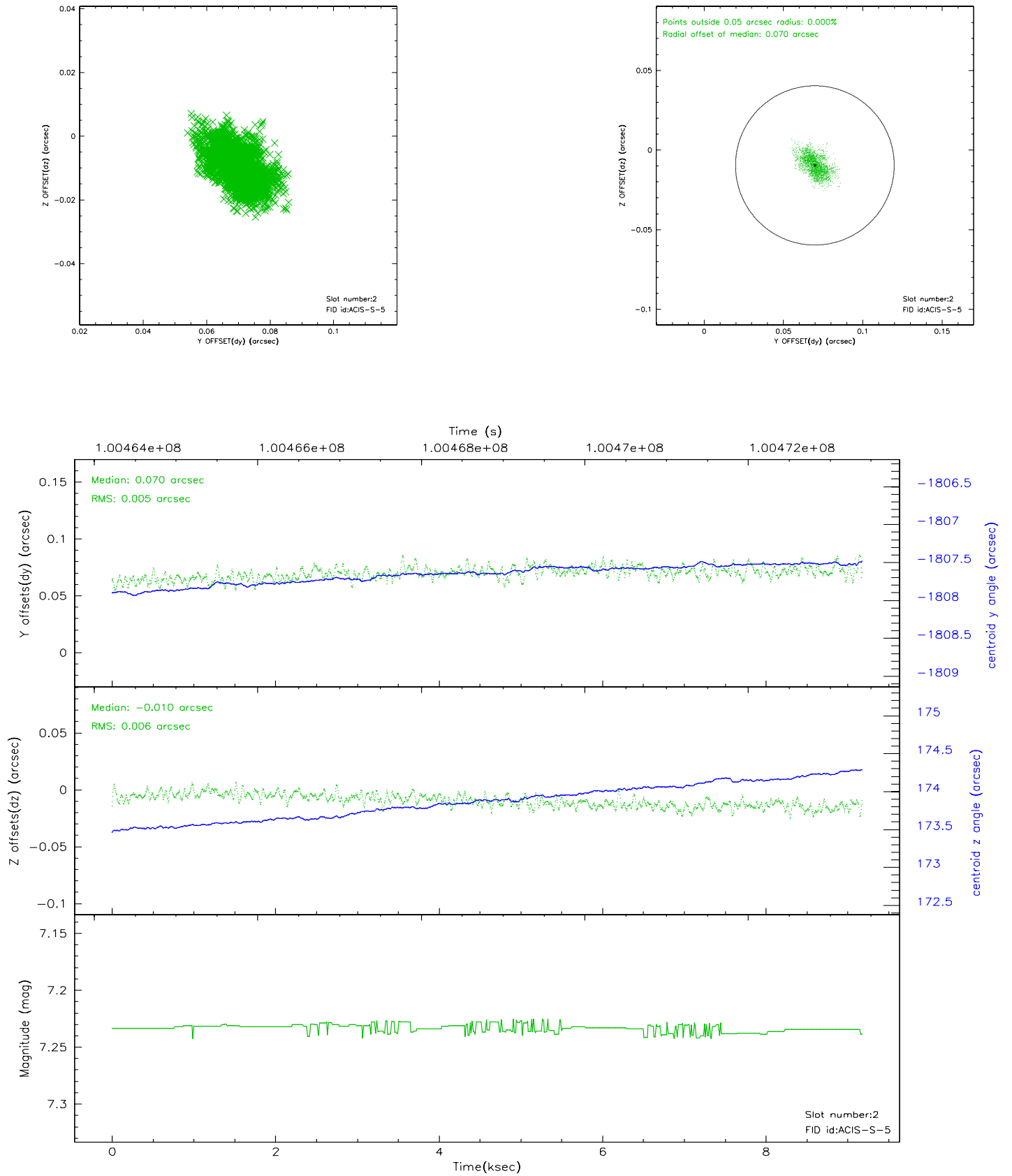
2.5.1 Slot 0



2.5.2 Slot 1



2.5.3 Slot 2



3 Point Sources

A Summary

A.1 Status

V&V Scientist	Jen Lauer
V&V Date (YYYY-MM-DD)	2006.11.08
V&V Edition	1
V&V Disposition and Status	OK
V&V Charge Time	9.181

A.2 Comments

Roll constraint met.