

V&V Reference Report

L2 ASCDS Version : 10.3.3

Observation 17582 - L2 Version 1
Chandra X-Ray Center

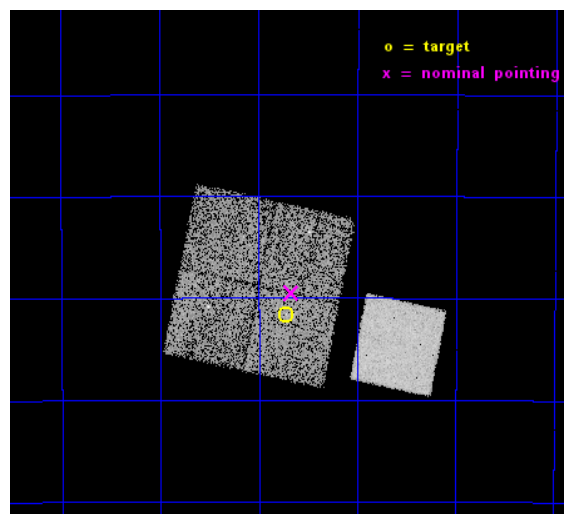
L2 Processing Date : Jan 21 2015

Contents

1	Front	2
2	OBI	3
2.1	OBI	3
2.1.1	Images	3
2.1.2	Bias	3
2.1.3	Parameters	4
2.1.4	Events	4
2.2	Compared Parameters	5
2.3	Aspect	6
2.4	Star Slots	9
2.4.1	Slot 3	9
2.4.2	Slot 4	10
2.4.3	Slot 5	11
2.4.4	Slot 6	12
2.4.5	Slot 7	13
2.5	FID Slots	14
2.5.1	Slot 0	14
2.5.2	Slot 1	15
2.5.3	Slot 2	16
A	Summary	17
A.1	Status	17
A.2	Comments	17

1 Front

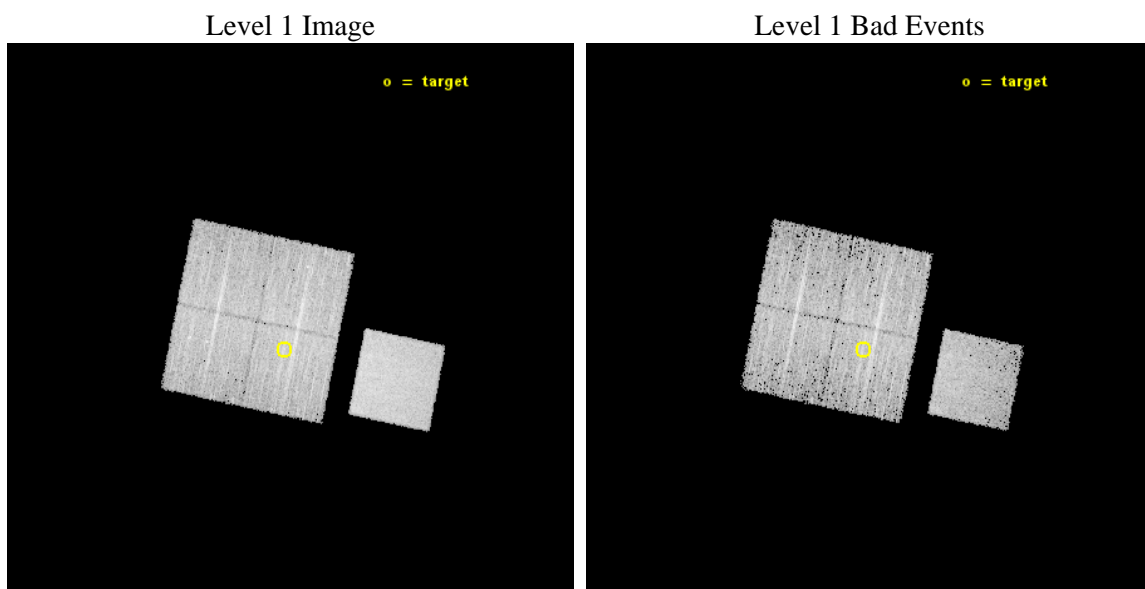
seq_num	502289	Sequence number
obs_id	17582	Observation id
title	HESS~J1640-465: Powering the most luminous gamma-ray source in the Galaxy	Proposal title
observer	Dr Eric Gotthelf	Principal investigator
object	CXOU J164043.5-463135	Source name
dtcycle	0	
cycle	P	events from which exps? Prim/Second/Both
ra_targ	250.18125	Observer's specified target RA [deg]
dec_targ	-46.526389	Observer's specified target Dec [deg]
ra_nom	250.16729792771	Nominal RA [deg]
dec_nom	-46.491434177227	Nominal Dec [deg]
roll_nom	101.69853354666	Nominal Roll [deg]
revision	1	Processing version of data
ontime	10059.172405601	Sum of GTIs [s]
livetime	9927.7419126664	Livetime [s]
ontime0	10059.049285531	Sum of GTIs [s]
ontime1	10059.090325594	Sum of GTIs [s]
ontime2	10059.131365538	Sum of GTIs [s]
ontime3	10059.172405601	Sum of GTIs [s]
ontime7	10059.213445544	Sum of GTIs [s]
l2events	53119	Number of level 2 events



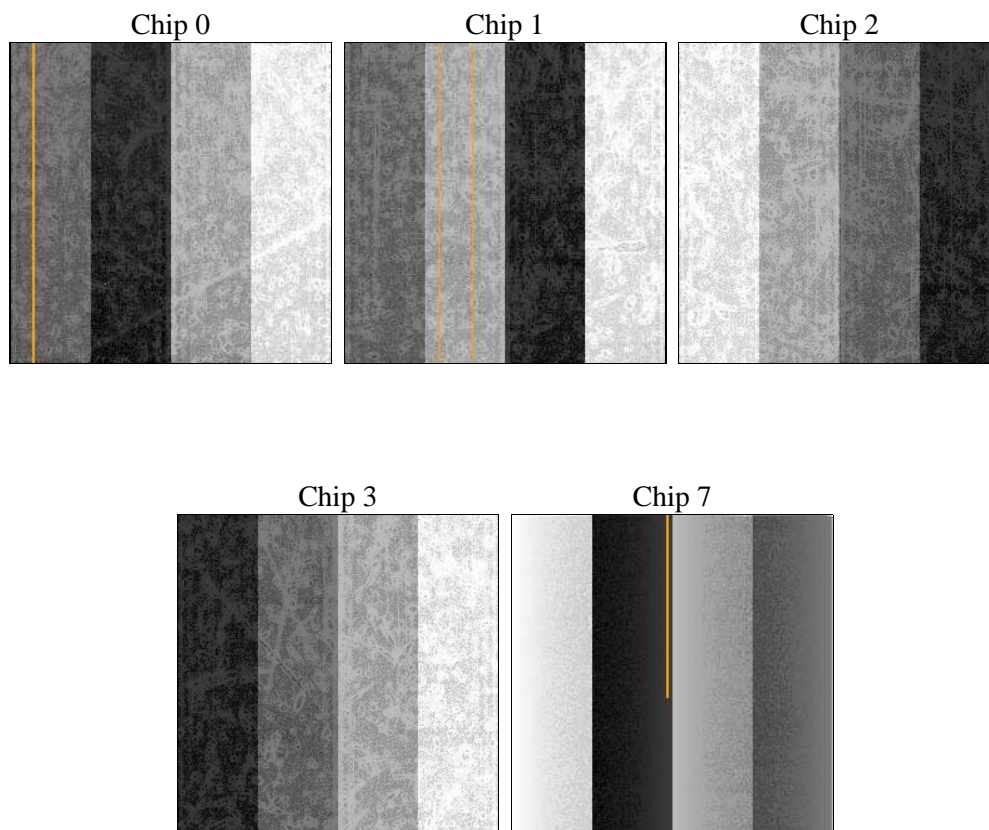
2 OBI

2.1 OBI

2.1.1 Images



2.1.2 Bias



2.1.3 Parameters

obi_num	0	Obi number	sched_exp_time	10000.000000	[s] Scheduled observation exposure time
ascdsver	10.3.3	Processing system revision	ontime	10059.172405601	Sum of GTIs [s]
caldsver	4.6.6	 	ontime0	10059.049285531	Sum of GTIs [s]
date	2015-01-22T03:35:43	Date and time of file creation	ontime1	10059.090325594	Sum of GTIs [s]
revision	1	Processing version of data	ontime2	10059.131365538	Sum of GTIs [s]
			ontime3	10059.172405601	Sum of GTIs [s]
			ontime7	10059.213445544	Sum of GTIs [s]
			l1events	259216	Number of level 1 events

2.1.4 Events

	ccd 0	ccd 1	ccd 2	ccd 3	ccd 7
level 1 events	44488	46071	51068	49783	67806
rejected events	37863	38653	44224	42771	37649
rejected %	85%	83%	86%	85%	55%

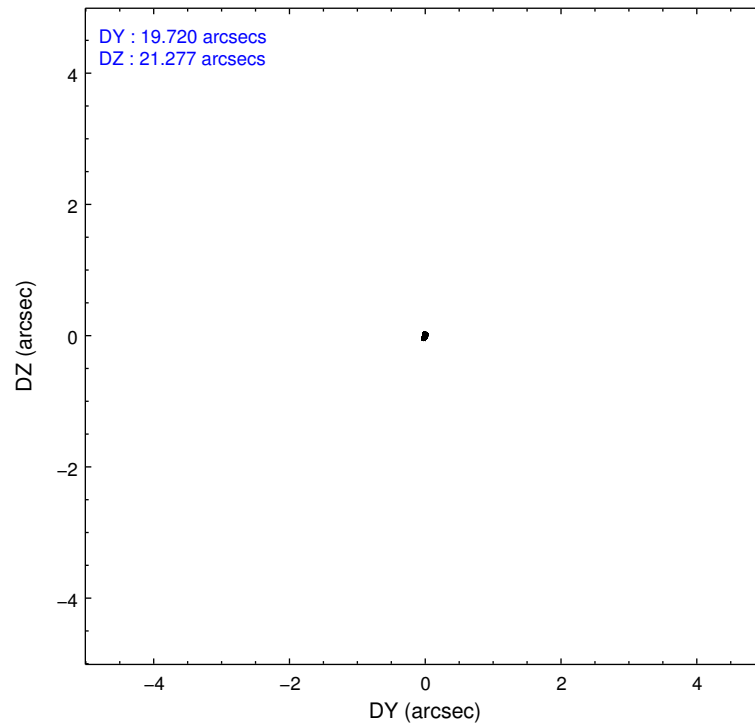
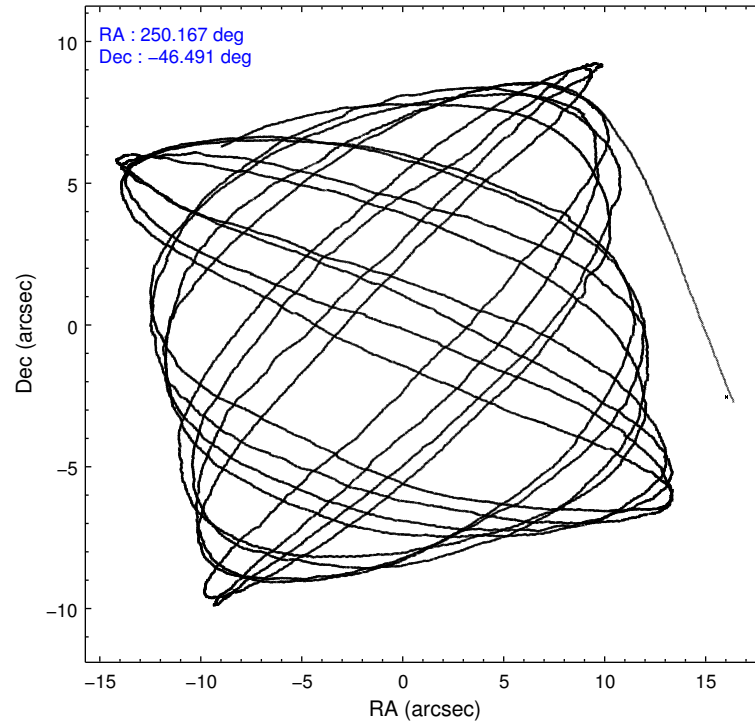
	ccd 0	ccd 1	ccd 2	ccd 3	ccd 7
grade 0 events	2614	2987	2857	3035	2853
	5%	6%	5%	6%	4%
grade 1 events	28	32	17	39	72
	0%	0%	0%	0%	0%
grade 2 events	1584	1727	1524	1406	6394
	3%	3%	2%	2%	9%
grade 3 events	630	664	606	680	2525
	1%	1%	1%	1%	3%
grade 4 events	589	617	681	677	2584
	1%	1%	1%	1%	3%
grade 5 events	2244	2391	2196	2587	6768
	5%	5%	4%	5%	9%
grade 6 events	1212	1427	1177	1218	15814
	2%	3%	2%	2%	23%
grade 7 events	35587	36226	42010	40141	30796
	79%	78%	82%	80%	45%

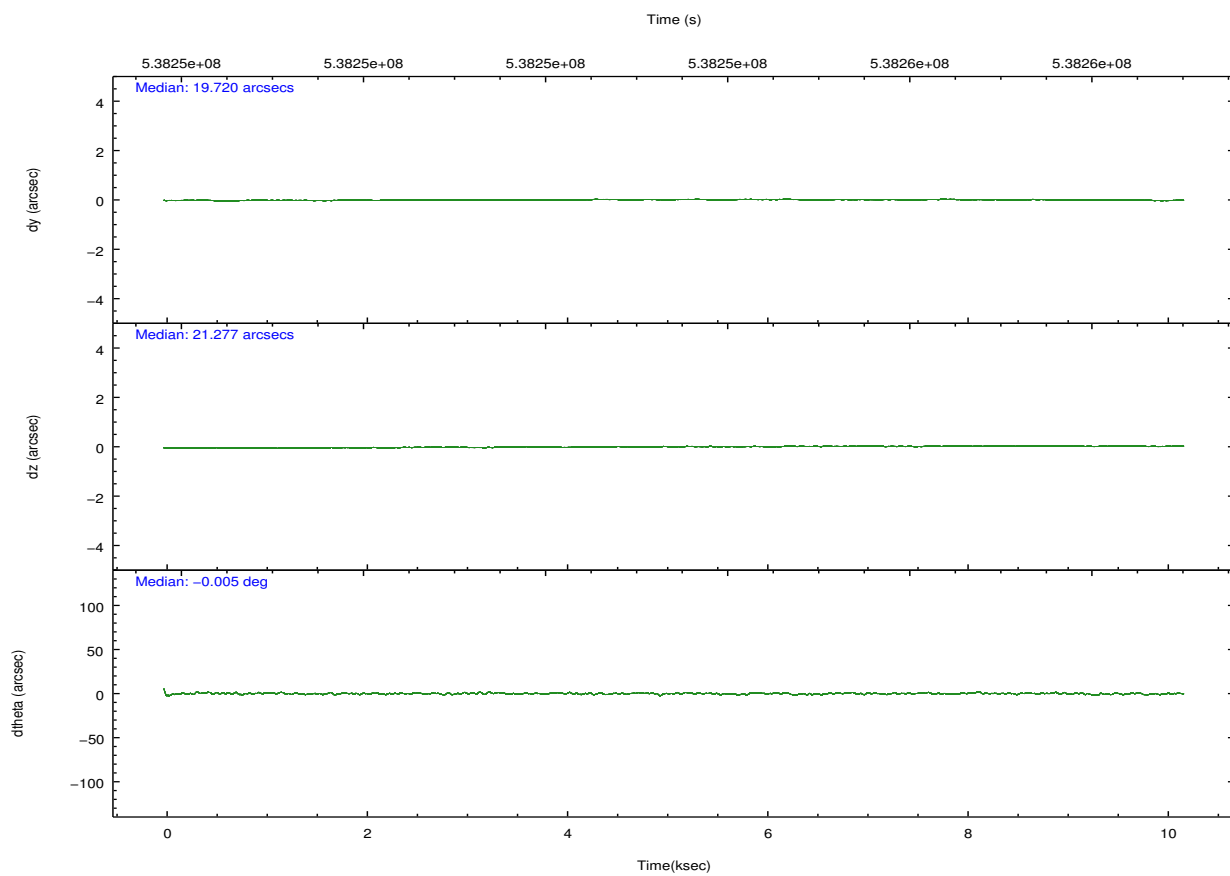
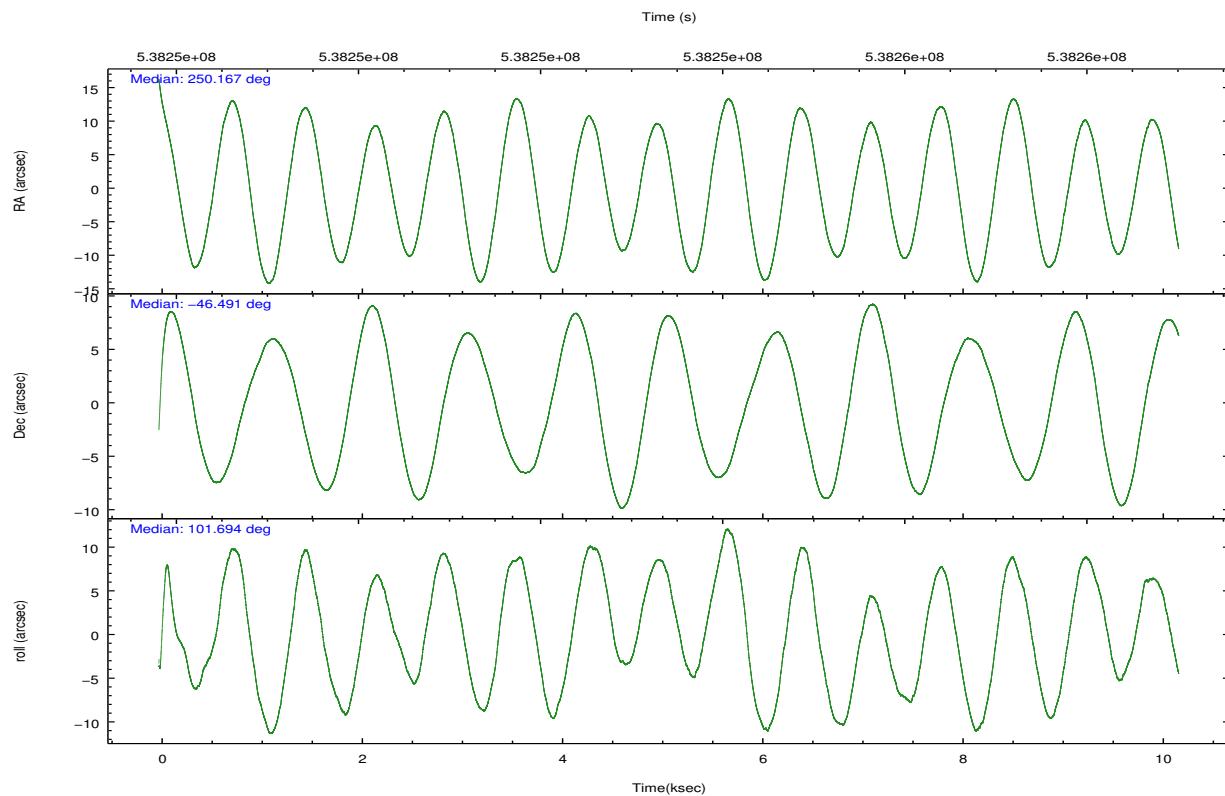
2.2 Compared Parameters

Parameter	Planned	Actual
Instrument	ACIS	ACIS
Detector	ACIS-01237	ACIS-01237
Grating	NONE	NONE
Data mode	VFAINT	VFAINT
Observation mode	POINTING	POINTING
[deg] Pointing RA	250.194051	250.1672979277069
[deg] Pointing Dec	-46.512007	-46.49143417722668
[deg] Pointing Roll	101.509286	101.6985335466577
[mm] SIM focus pos	-0.782348	-0.7809083437167272
[mm] SIM defocus	0	0.001439871863259334
[mm] SIM translation stage pos	-225.694963	-225.7050559904381
[mm] SIM translation stage offset	-7.8975	-7.88739701249159
[s] Observation start time (MET)	538248474.184000	538246878.8643301
Observation start date	2015-01-21T17:26:47	2015-01-21T17:01:18
[s] Observation end time (MET)	538258474.184000	538259460.7400301
Observation end date	2015-01-21T20:13:27	2015-01-21T20:31:00
Read mode	TIMED	TIMED

Parameter	Planned	Actual
Obspar format version number	7	7
Obspar file type	PREDICTED	ACTUAL
Obspar update status	NONE	UPDATED
CCD I0 on	Y	Y
CCD I1 on	Y	Y
CCD I2 on	Y	Y
CCD I3 on	Y	Y
CCD S0 on	N	N
CCD S1 on	N	N
CCD S2 on	N	N
CCD S3 on	O1	Y
CCD S4 on	N	N
CCD S5 on	N	N
Number of optional ACIS chips dropped	0	0
On-chip summing requested	N	N
Subarray requested	NONE	NONE
Alternating exposures requested	N	N
[s] Primary exposure time	0.000000	3.1

2.3 Aspect



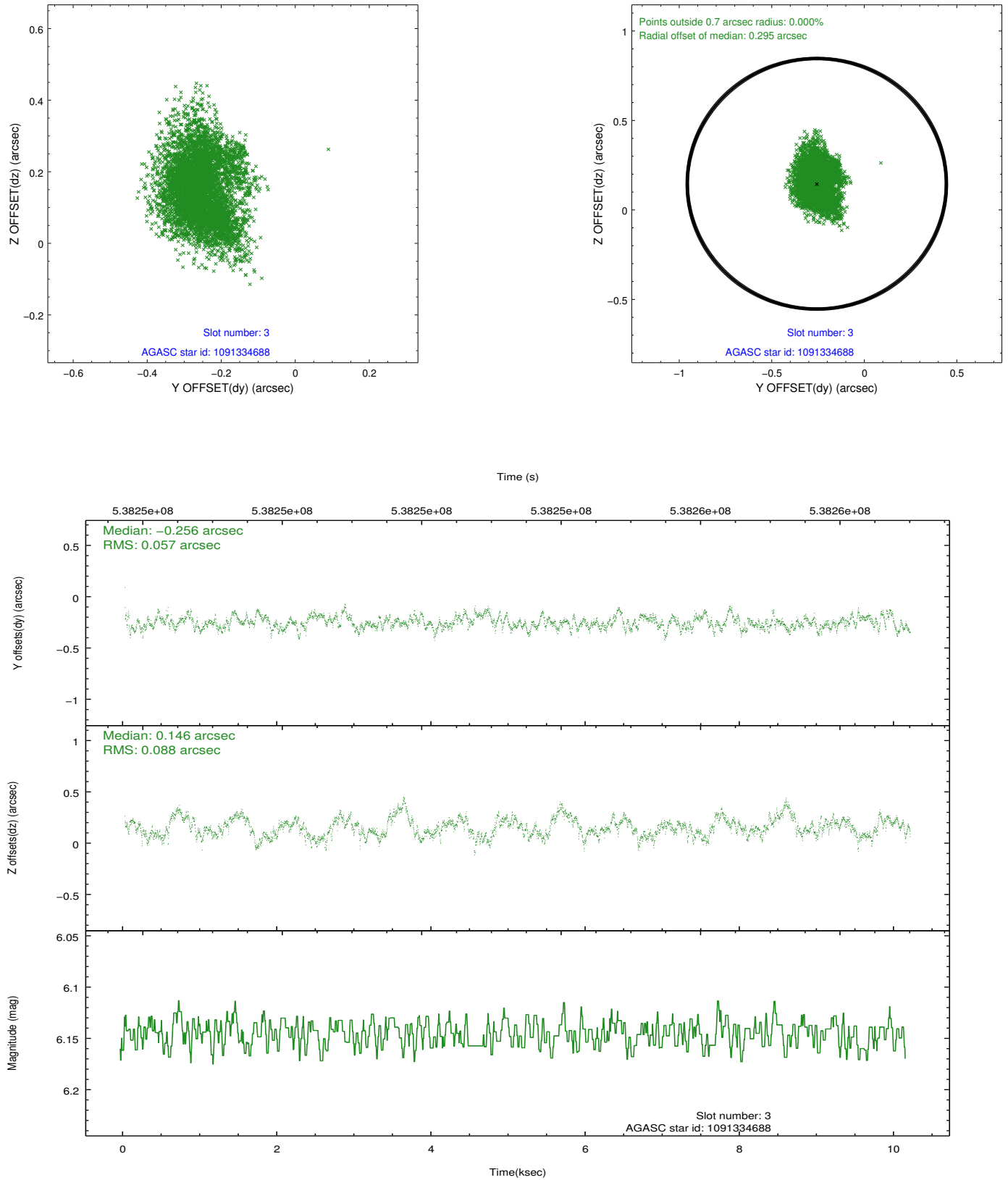


Slot Statistics

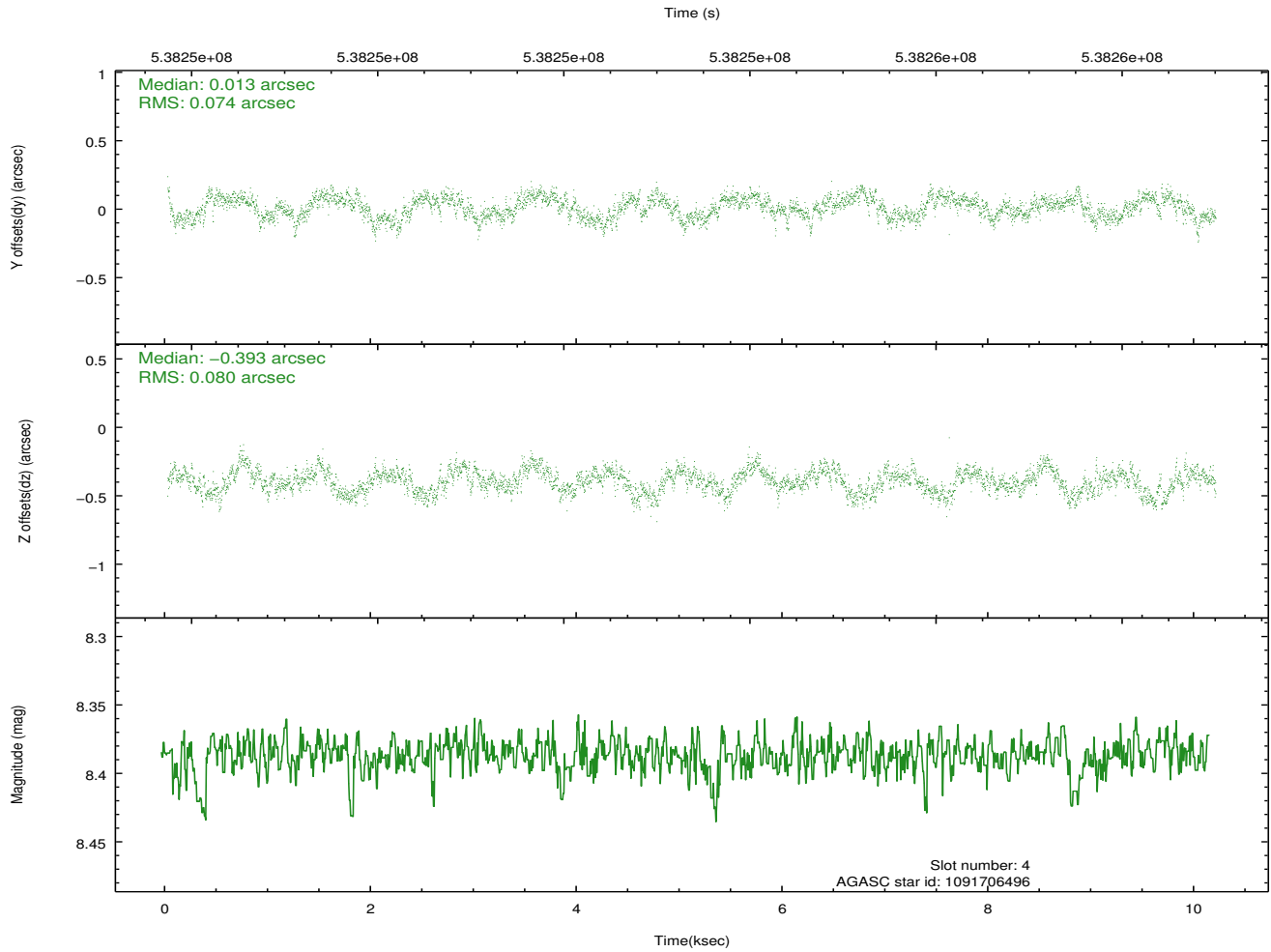
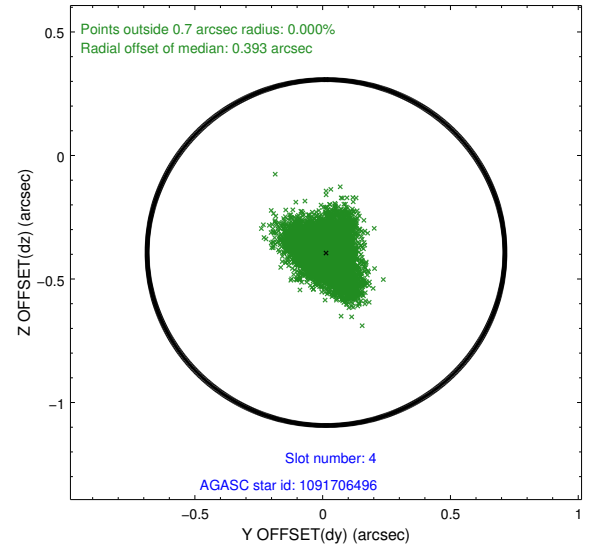
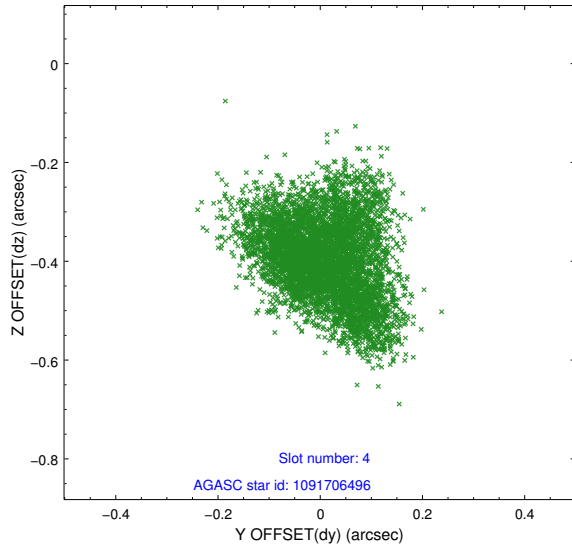
slot	status	used	id	mag	n_pts	med_dy	med_dz	dr1	dr2	ra	dec	mean_y	mean_z
0	FID		ACIS-I-2	7.03	2485	-0.173	-0.022	0.011	0.021	0.000000	0.000000	-775.26	-1012.32
1	FID		ACIS-I-4	6.99	2485	0.279	0.101	0.007	0.012	0.000000	0.000000	2138.90	893.70
2	FID		ACIS-I-5	7.06	2485	-0.207	-0.010	0.010	0.017	0.000000	0.000000	-1828.12	890.88
3	GUIDE	used	1091334688	6.15	4970	-0.256	0.146	0.111	0.179	250.764858	-46.070295	1268.66	-1712.70
4	GUIDE	used	1091706496	8.39	4965	0.013	-0.393	0.116	0.184	249.546894	-47.245288	-2277.46	2077.29
5	GUIDE	used	1091838488	9.43	4968	0.263	0.709	0.163	0.261	251.127983	-46.881927	-1776.82	-1982.13
6	GUIDE	used	1091193912	8.90	4969	-0.258	0.003	0.124	0.191	250.208472	-45.834358	2382.74	-522.12
7	GUIDE	used	1091704704	10.09	4936	0.238	-0.476	0.282	0.430	249.457504	-47.039620	-1508.40	2151.02

2.4 Star Slots

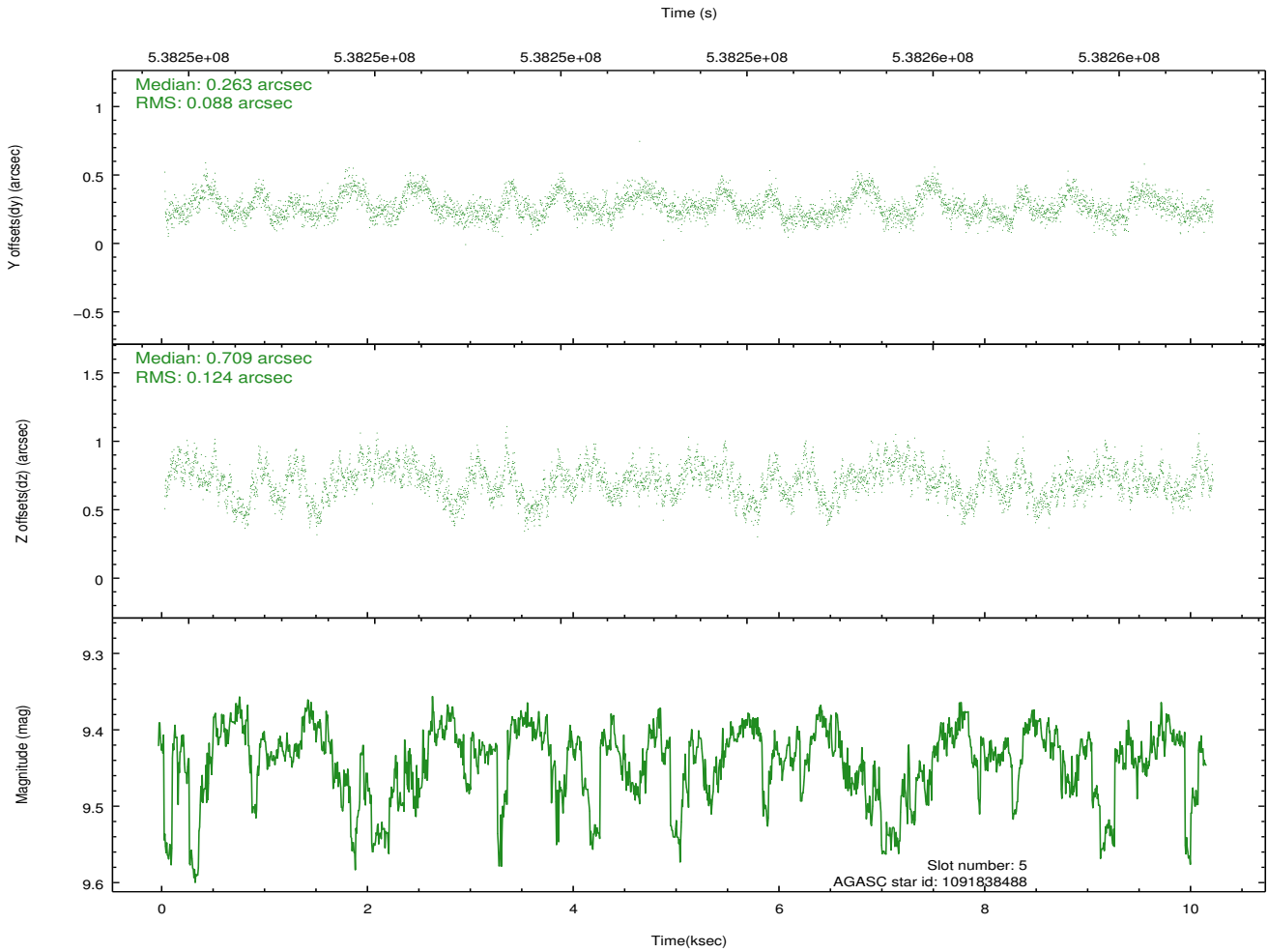
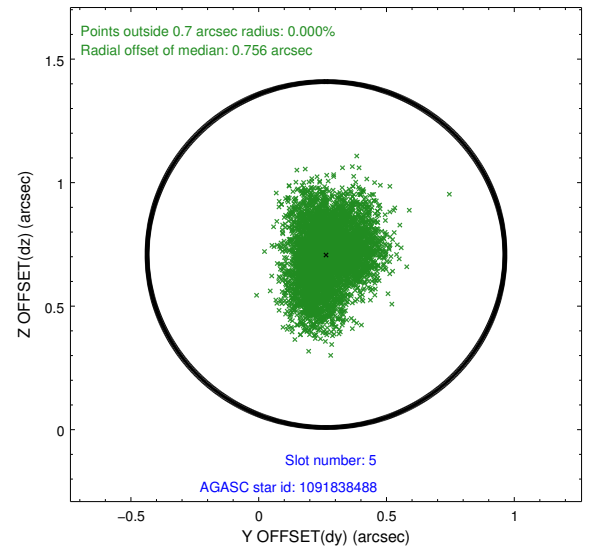
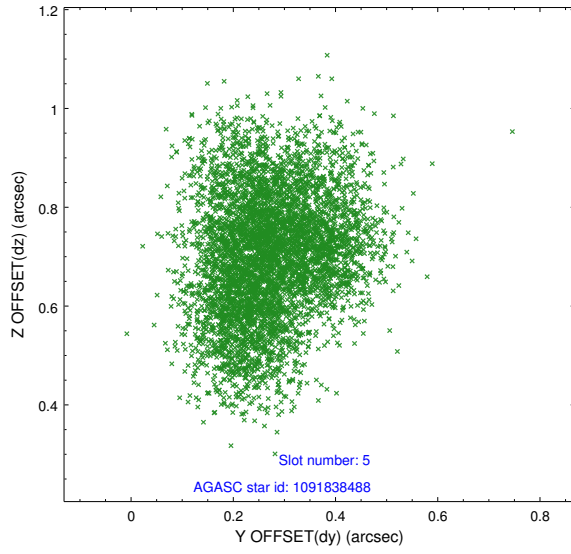
2.4.1 Slot 3



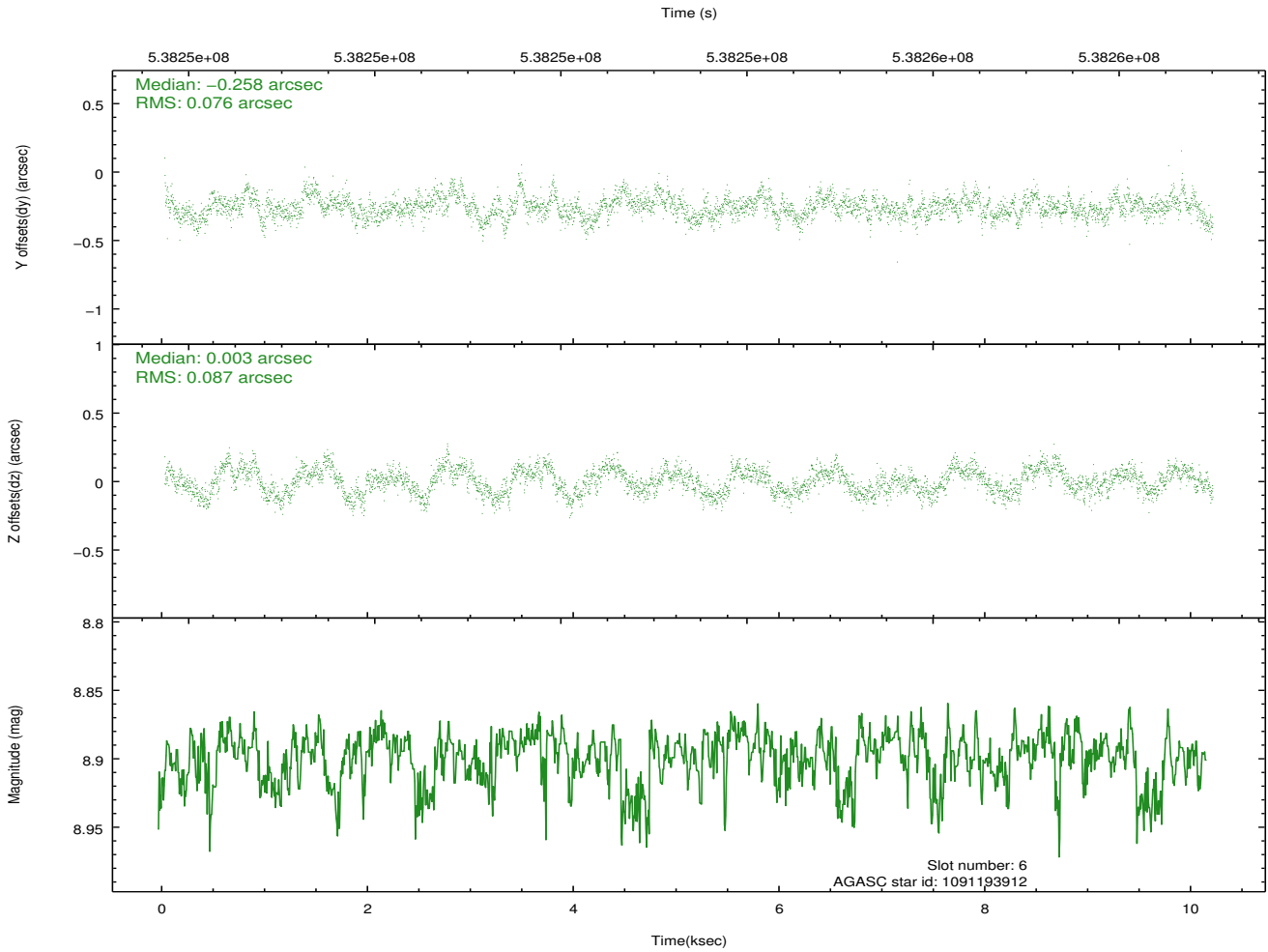
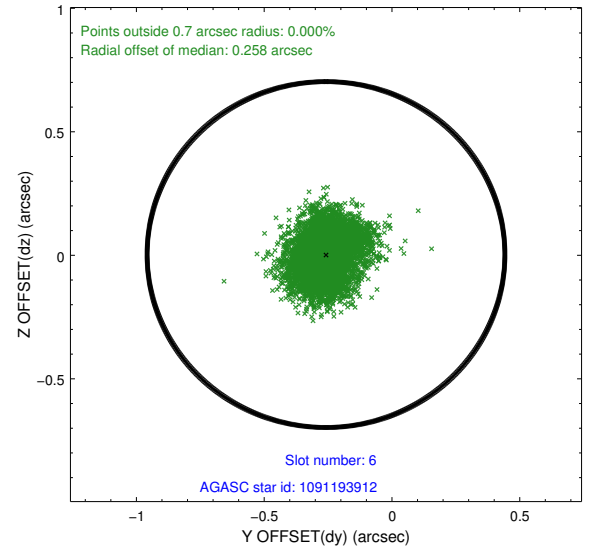
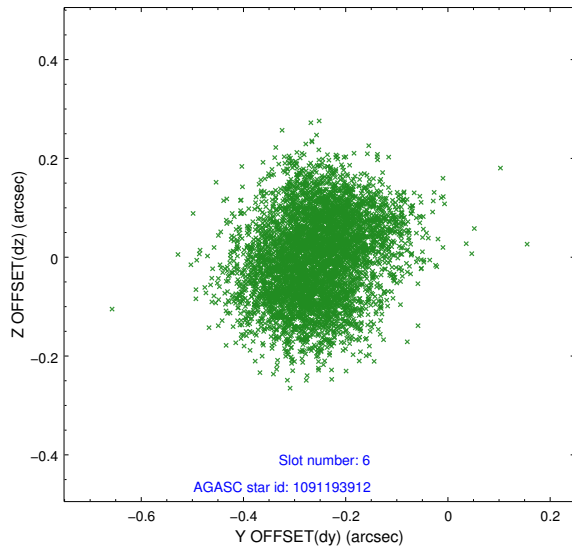
2.4.2 Slot 4



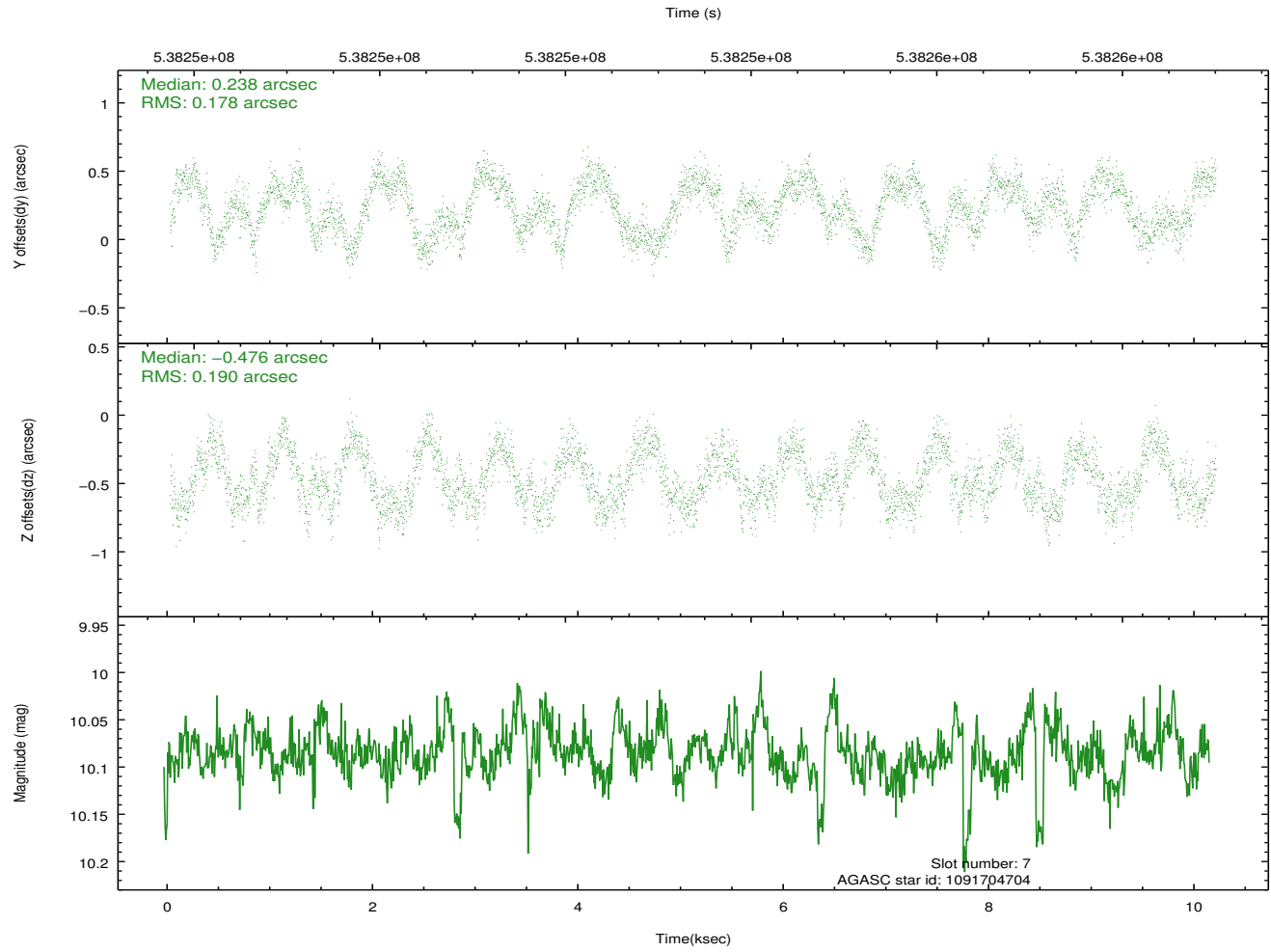
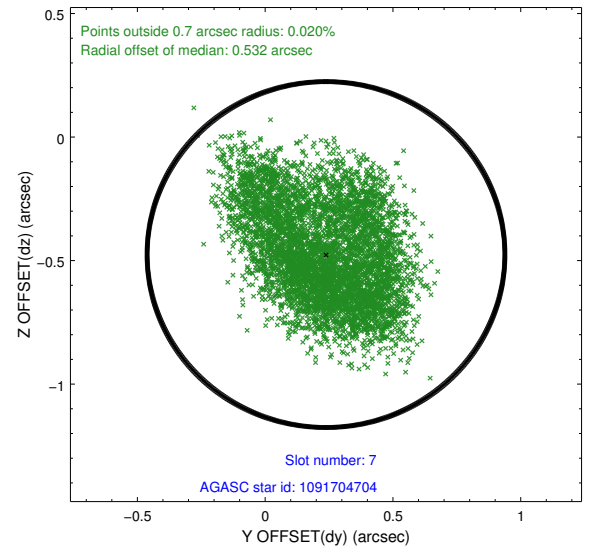
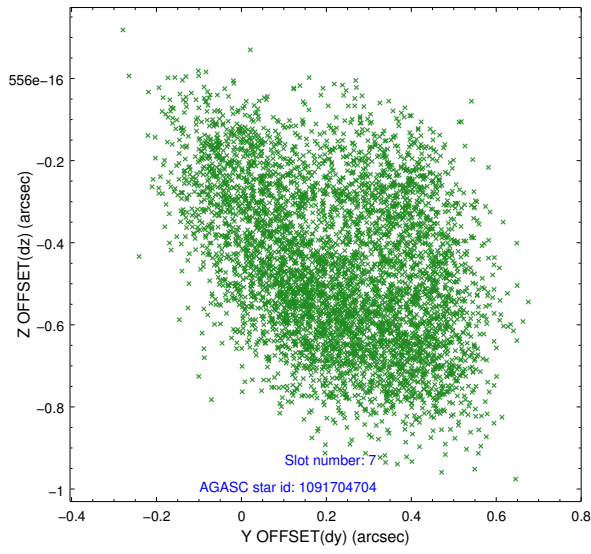
2.4.3 Slot 5



2.4.4 Slot 6

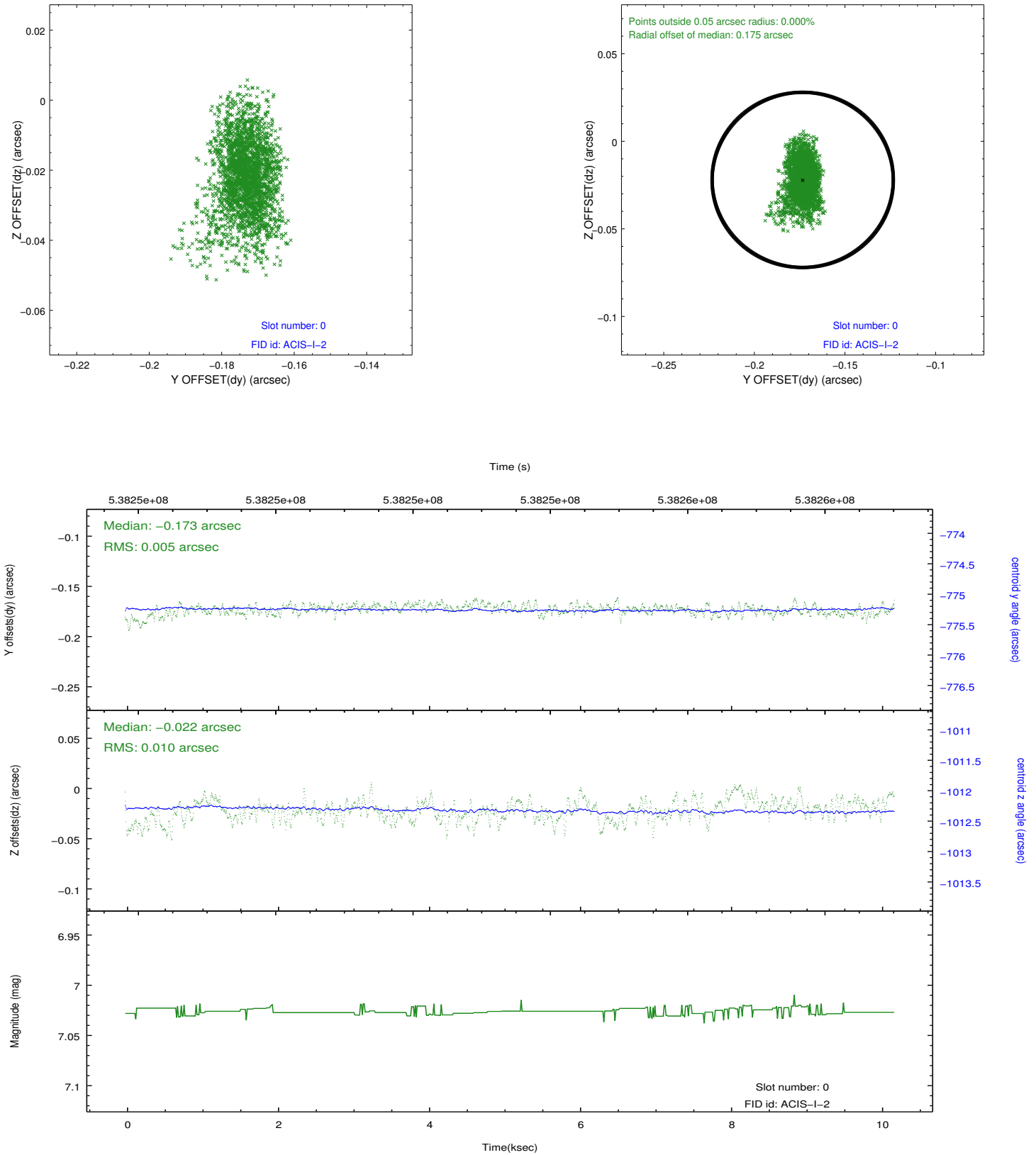


2.4.5 Slot 7

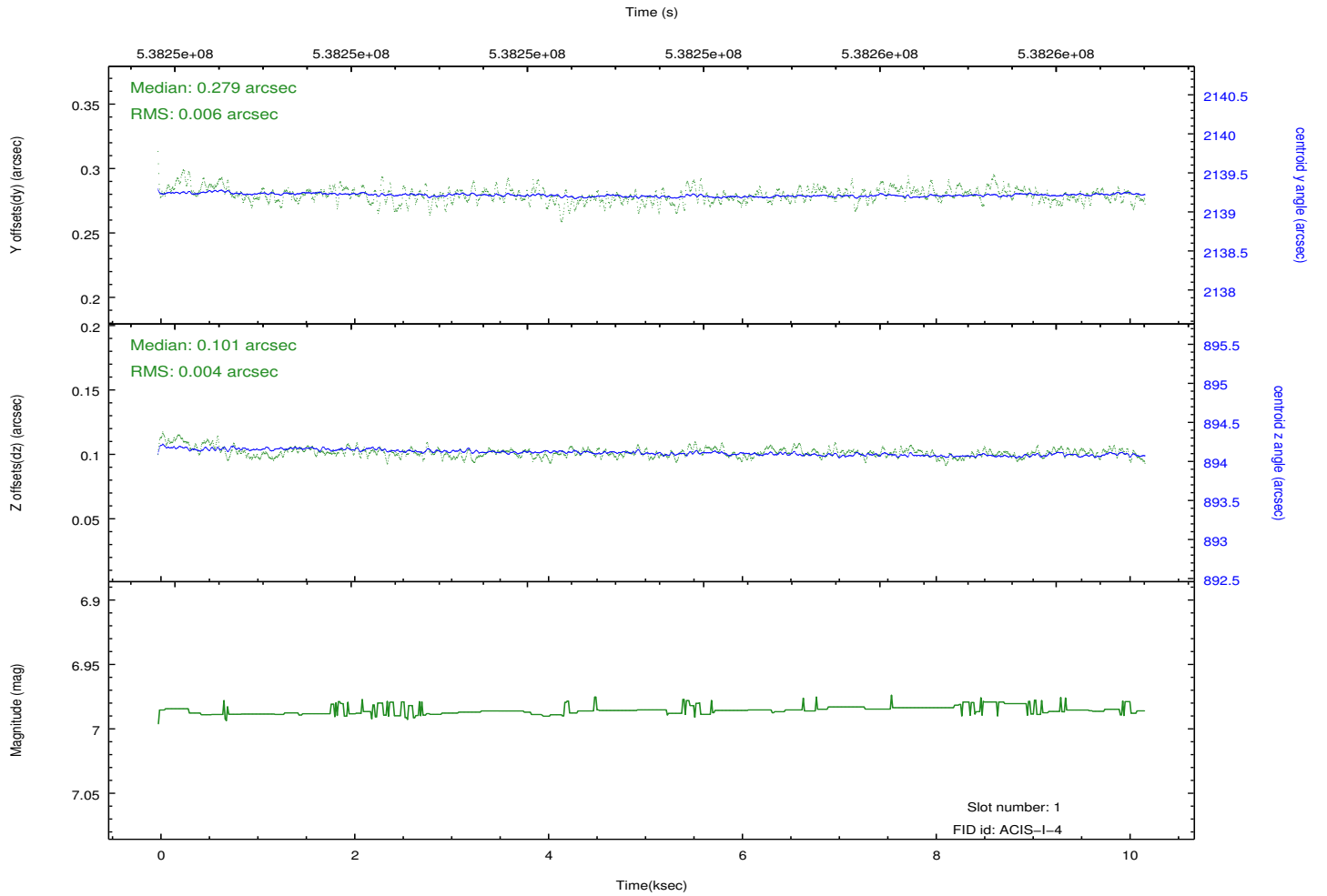
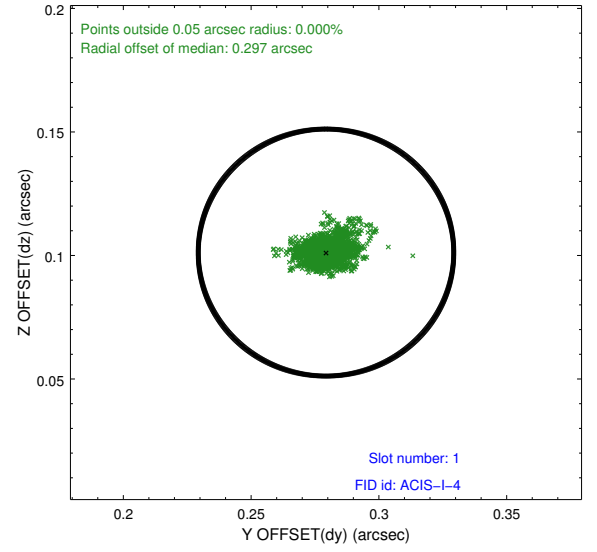
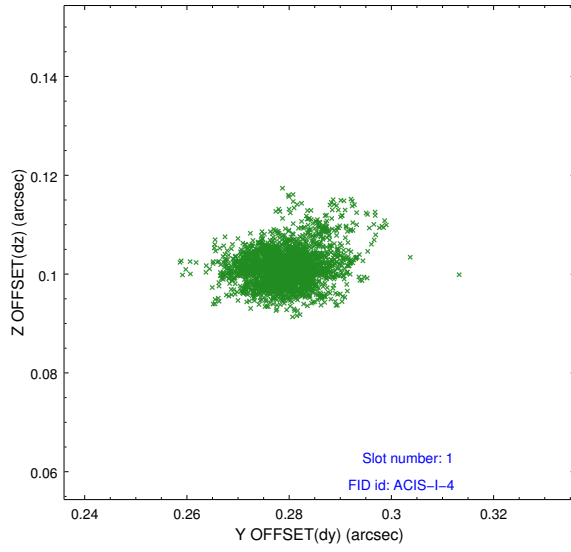


2.5 FID Slots

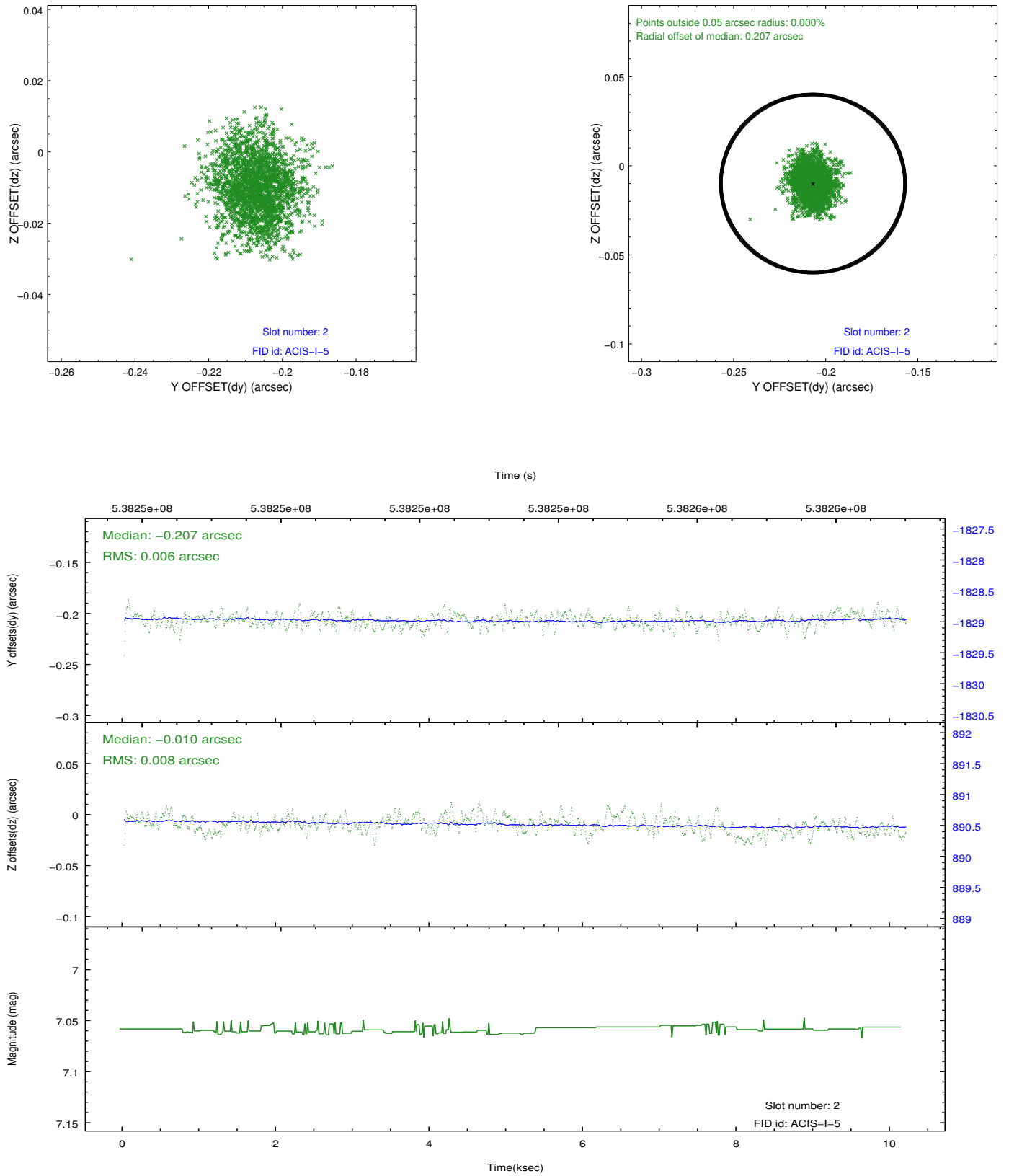
2.5.1 Slot 0



2.5.2 Slot 1



2.5.3 Slot 2



A Summary

A.1 Status

V&V Scientist	Joy Nichols
V&V Date (YYYY-MM-DD)	2015.01.22
V&V Edition	1
V&V Disposition and Status	OK
V&V Charge Time	10.059172405601

A.2 Comments