

# V&V Reference Report

## L2 ASCDS Version : 10.3.3

Observation 17402 - L2 Version 1  
Chandra X-Ray Center

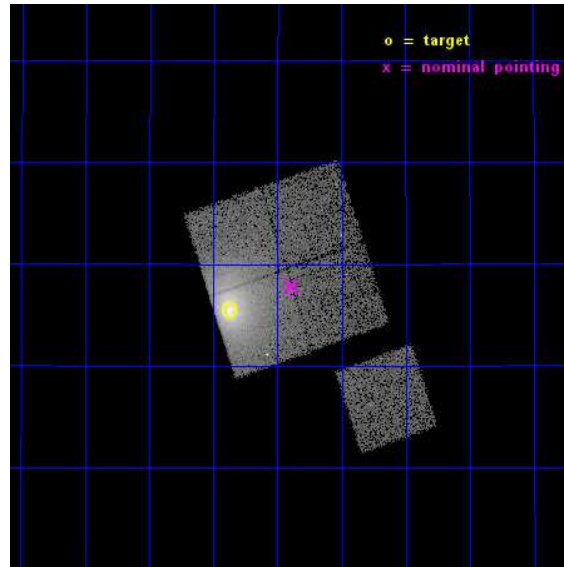
L2 Processing Date : Apr 8 2015

## Contents

<b>1</b>	<b>Front</b>	<b>2</b>
<b>2</b>	<b>OBI</b>	<b>3</b>
2.1	OBI . . . . .	3
2.1.1	Images . . . . .	3
2.1.2	Bias . . . . .	3
2.1.3	Parameters . . . . .	4
2.1.4	Events . . . . .	4
2.2	Compared Parameters . . . . .	5
2.3	Aspect . . . . .	6
2.4	Star Slots . . . . .	9
2.4.1	Slot 3 . . . . .	9
2.4.2	Slot 4 . . . . .	10
2.4.3	Slot 5 . . . . .	11
2.4.4	Slot 6 . . . . .	12
2.4.5	Slot 7 . . . . .	13
2.5	FID Slots . . . . .	14
2.5.1	Slot 0 . . . . .	14
2.5.2	Slot 1 . . . . .	15
2.5.3	Slot 2 . . . . .	16
<b>A</b>	<b>Summary</b>	<b>17</b>
A.1	Status . . . . .	17
A.2	Comments . . . . .	17

# 1 Front

seq_num	890102	Sequence number
obs_id	17402	Observation id
title	AO-16 Calibration Observations of A1795	Proposal title
observer	Dr. CXC Calibration	Principal investigator
object	A1795	Source name
dtcycle	0	&#160
cycle	P	events from which exps? Prim/Second/Both
ra_targ	207.219583	Observer's specified target RA [deg]
dec_targ	26.590833	Observer's specified target Dec [deg]
ra_nom	207.09800037596	Nominal RA [deg]
dec_nom	26.629736112364	Nominal Dec [deg]
roll_nom	161.36458405846	Nominal Roll [deg]
revision	1	Processing version of data
ontime	14777.165143847	Sum of GTIs [s]
livetime	14584.090602452	Livetime [s]
ontime0	14777.042023897	Sum of GTIs [s]
ontime1	14777.083063841	Sum of GTIs [s]
ontime2	14777.124103904	Sum of GTIs [s]
ontime3	14777.165143847	Sum of GTIs [s]
ontime6	14777.000983834	Sum of GTIs [s]
l2events	112642	Number of level 2 events

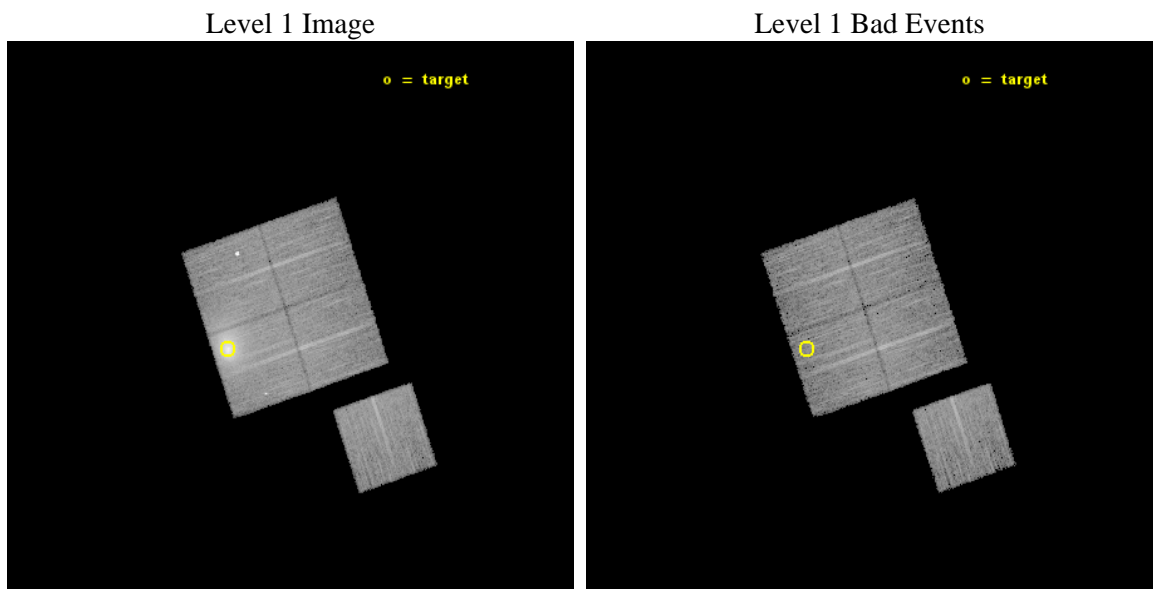




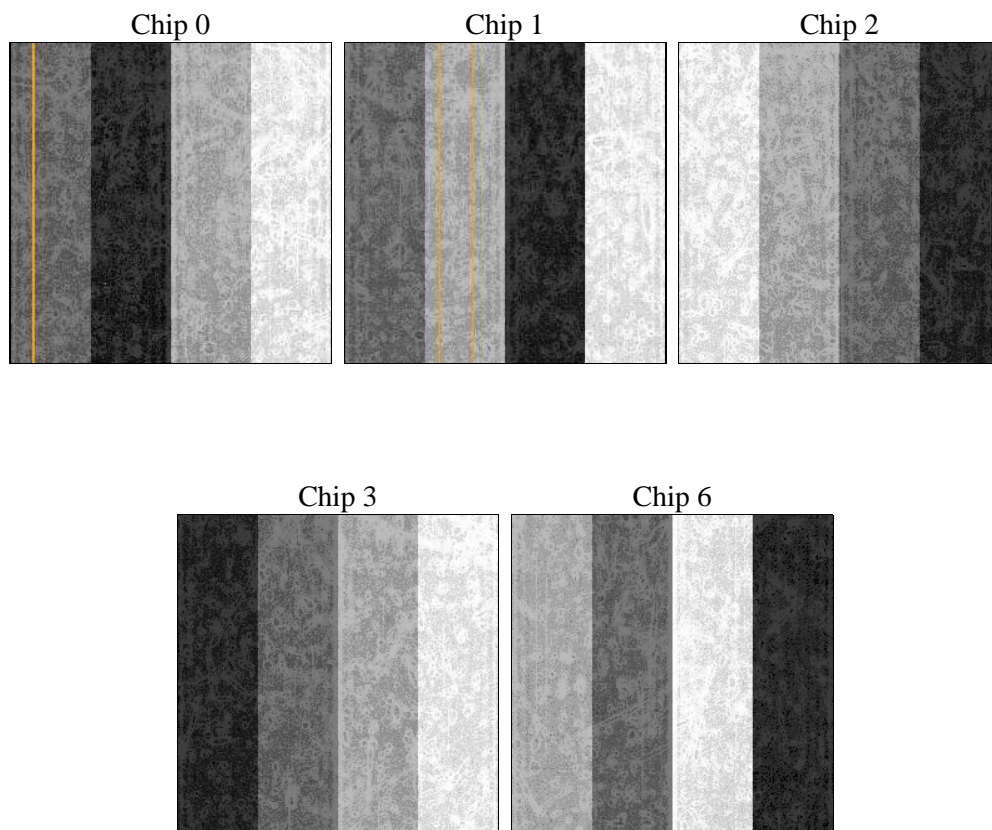
## 2 OBI

### 2.1 OBI

#### 2.1.1 Images



#### 2.1.2 Bias



### 2.1.3 Parameters

obi_num	0	Obi number	sched_exp_time	15000.000000	[s] Scheduled observation exposure time
ascdsver	10.3.3	Processing system revision	ontime	14777.165143847	Sum of GTIs [s]
caldbver	4.6.7	&#160	ontime0	14777.042023897	Sum of GTIs [s]
date	2015-04-08T14:36:08	Date and time of file creation	ontime1	14777.083063841	Sum of GTIs [s]
revision	1	Processing version of data	ontime2	14777.124103904	Sum of GTIs [s]
			ontime3	14777.165143847	Sum of GTIs [s]
			ontime6	14777.000983834	Sum of GTIs [s]
			l1events	434198	Number of level 1 events

### 2.1.4 Events

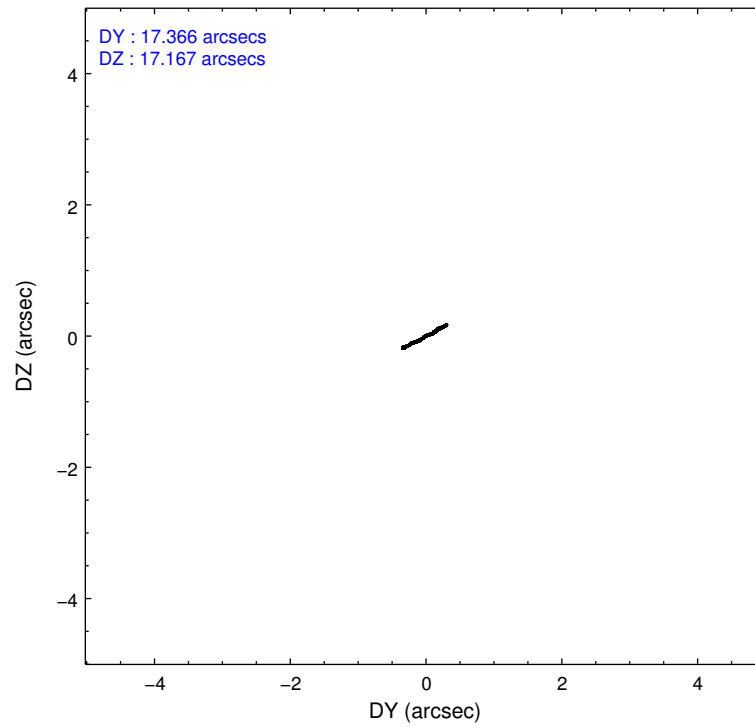
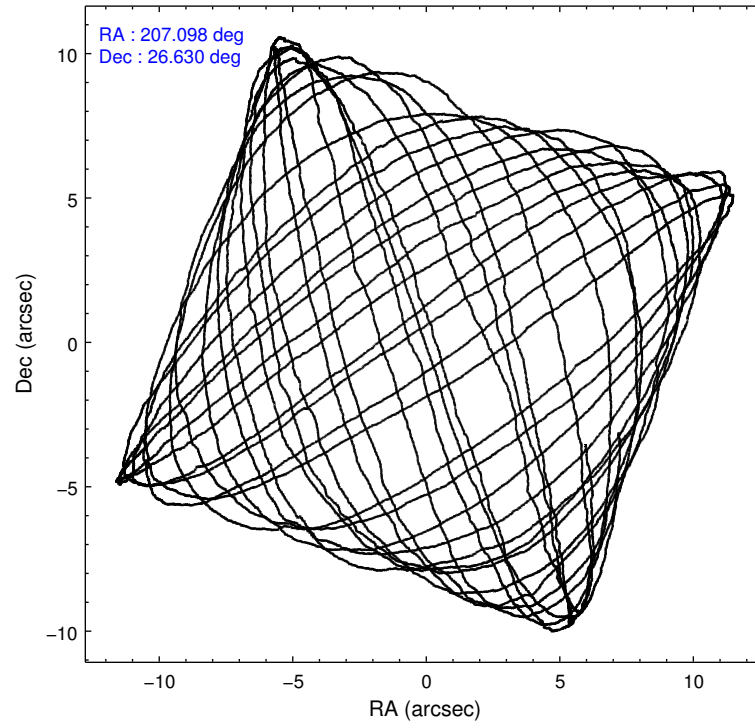
	ccd 0	ccd 1	ccd 2	ccd 3	ccd 6
level 1 events	66679	84282	73530	137261	72446
rejected events	57739	59088	64690	64146	64167
rejected %	86%	70%	87%	46%	88%

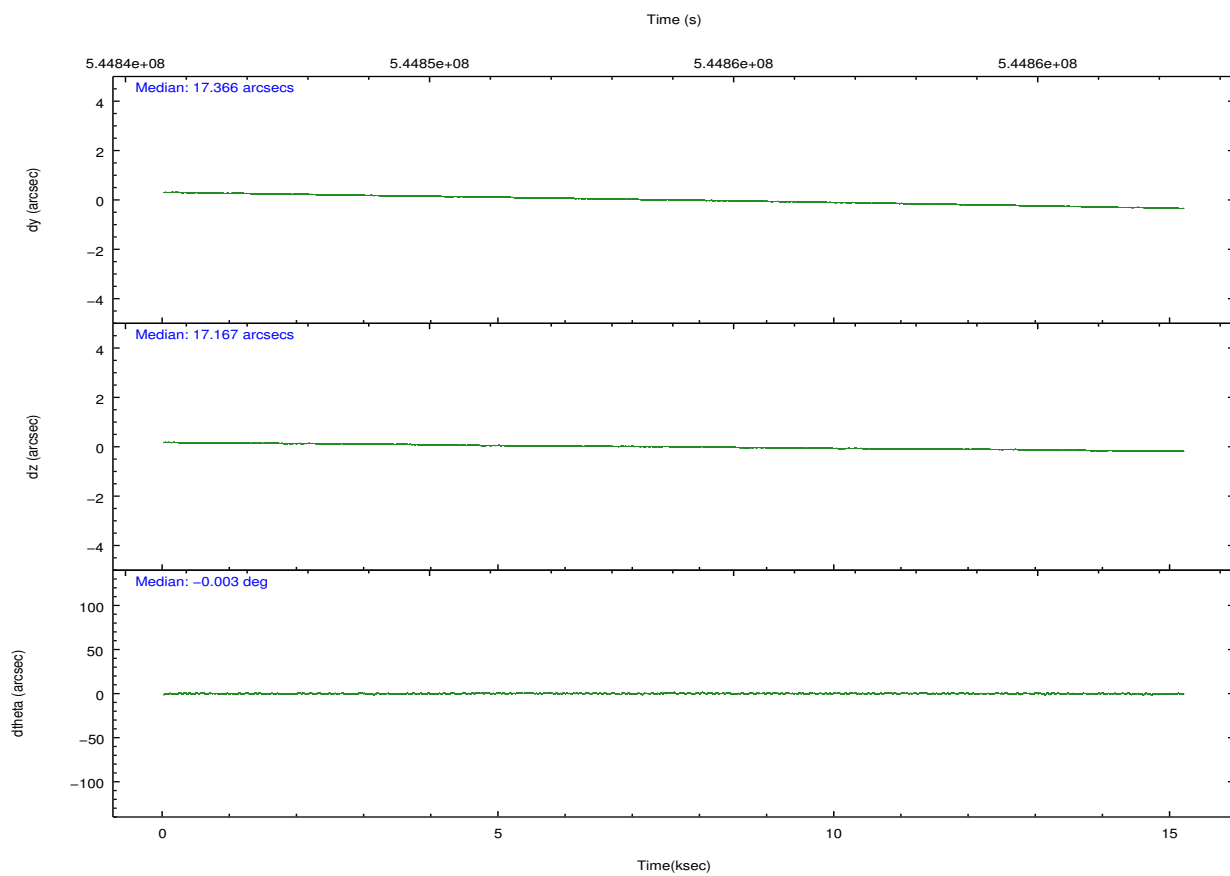
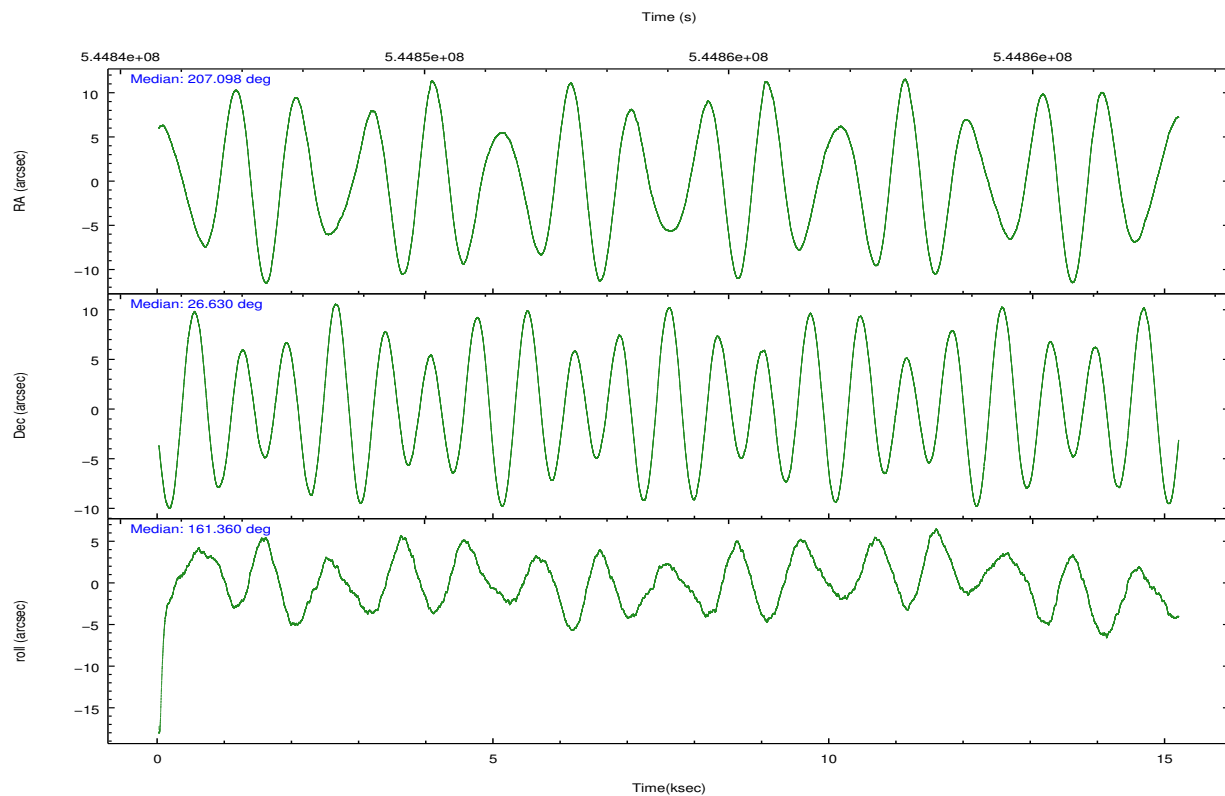
	ccd 0	ccd 1	ccd 2	ccd 3	ccd 6
grade 0 events	3445	16601	3673	54690	2672
	5%	19%	4%	39%	3%
grade 1 events	51	79	39	222	40
	0%	0%	0%	0%	0%
grade 2 events	2073	3503	1972	8801	1916
	3%	4%	2%	6%	2%
grade 3 events	869	1263	860	2977	810
	1%	1%	1%	2%	1%
grade 4 events	785	1287	842	2992	762
	1%	1%	1%	2%	1%
grade 5 events	3198	3365	3016	3792	3396
	4%	3%	4%	2%	4%
grade 6 events	1772	2550	1501	3672	2121
	2%	3%	2%	2%	2%
grade 7 events	54486	55634	61627	60115	60729
	81%	66%	83%	43%	83%

## 2.2 Compared Parameters

Parameter	Planned	Actual	Parameter	Planned	Actual
Instrument	ACIS	ACIS	Obspar format version number	7	7
Detector	ACIS-01236	ACIS-01236	Obspar file type	PREDICTED	ACTUAL
Grating	NONE	NONE	Obspar update status	NONE	UPDATED
Data mode	VFAINT	VFAINT	Number of optional ACIS chips dropped	0	0
Observation mode	POINTING	POINTING	On-chip summing requested	N	N
[deg] Pointing RA	207.128233	207.0980003759555	Subarray requested	NONE	NONE
[deg] Pointing Dec	26.635321	26.62973611236391	Alternating exposures requested	N	N
[deg] Pointing Roll	161.142340	161.364584058461	[s] Primary exposure time	0.000000	3.1
[s] Window start time (MET)	544233667.184000	544233667.184000			
[s] Window stop time (MET)	546739267.184000	546739267.184000			
[mm] SIM focus pos	-0.782348	-0.7809083437167272			
[mm] SIM defocus	0	0.001439871863259334			
[mm] SIM translation stage pos	-230.252463	-230.248423740357			
[mm] SIM translation stage offset	-3.34	-3.34402926257269			
[s] Observation start time (MET)	544846609.184000	544846233.59589			
Observation start date	2015-04-08T02:15:42	2015-04-08T02:10:33			
[s] Observation end time (MET)	544861609.184000	544861743.89676			
Observation end date	2015-04-08T06:25:42	2015-04-08T06:29:03			
Read mode	TIMED	TIMED			

## 2.3 Aspect



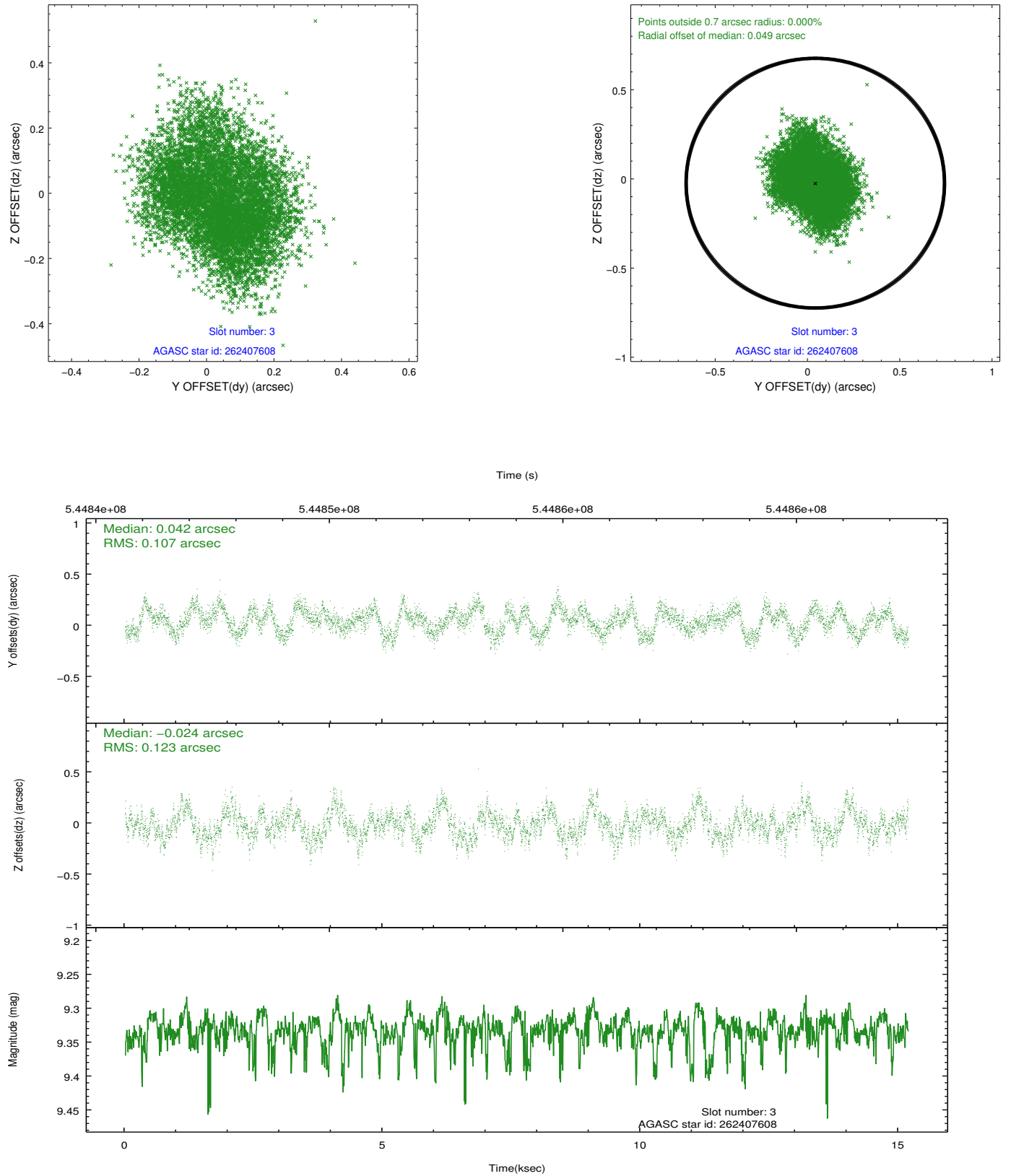


### Slot Statistics

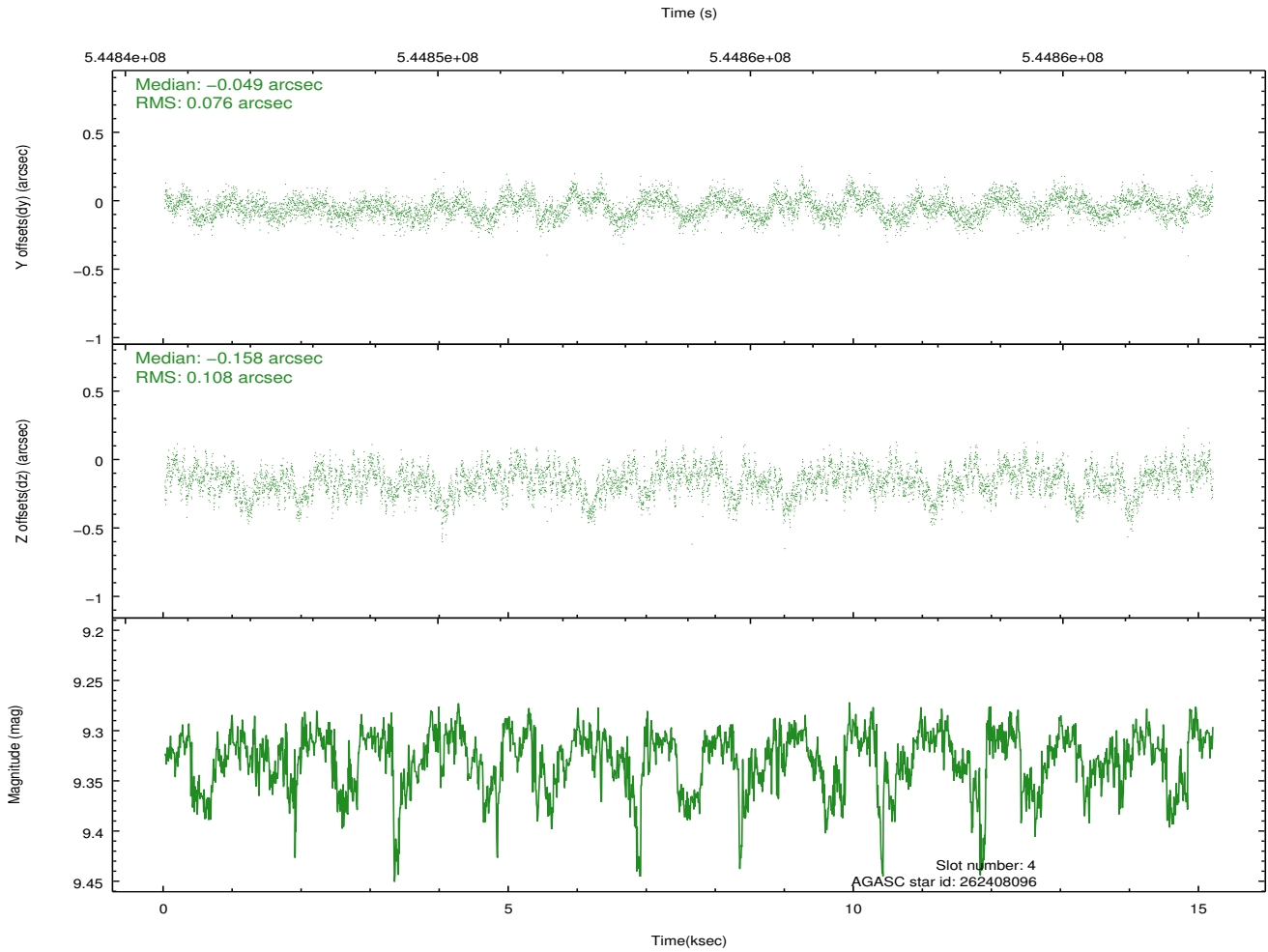
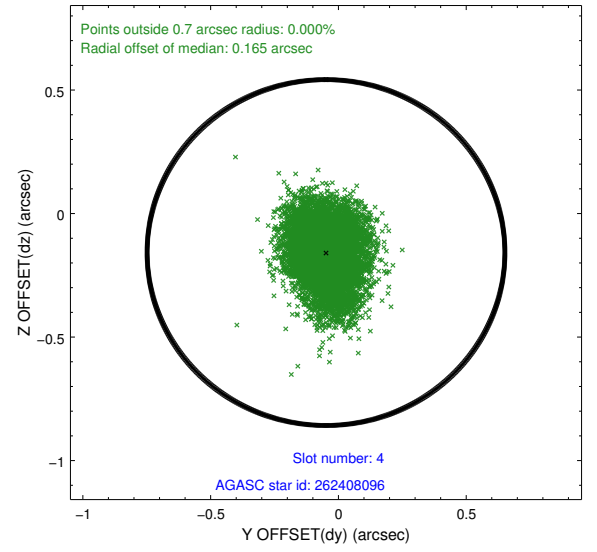
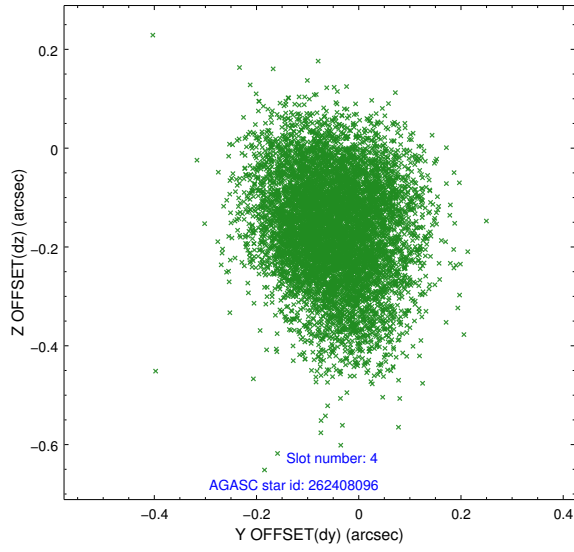
slot	status	used	id	mag	n_pts	med_dy	med_dz	dr1	dr2	ra	dec	mean_y	mean_z
0	FID		ACIS-I-1	7.24	3704	0.122	-0.122	0.009	0.017	0.000000	0.000000	922.12	-909.51
1	FID		ACIS-I-5	7.23	3704	-0.330	0.077	0.007	0.013	0.000000	0.000000	-1826.33	987.95
2	FID		ACIS-I-6	7.23	3703	0.117	0.115	0.007	0.013	0.000000	0.000000	387.27	1632.88
3	GUIDE	used	262407608	9.33	7402	0.042	-0.024	0.176	0.272	207.378401	26.435507	-995.24	419.47
4	GUIDE	used	262408096	9.32	7394	-0.049	-0.158	0.139	0.229	207.011678	26.515421	216.57	529.77
5	GUIDE	used	262408512	7.97	7406	0.058	0.291	0.091	0.152	207.800210	27.128796	-1460.78	-2382.00
6	GUIDE	used	262409552	8.18	7405	-0.012	0.018	0.090	0.147	206.584269	27.192805	2298.62	-1339.40
7	GUIDE	used	262411960	9.66	7399	-0.028	-0.135	0.167	0.273	207.327895	25.881727	-1488.31	2357.65

## 2.4 Star Slots

### 2.4.1 Slot 3

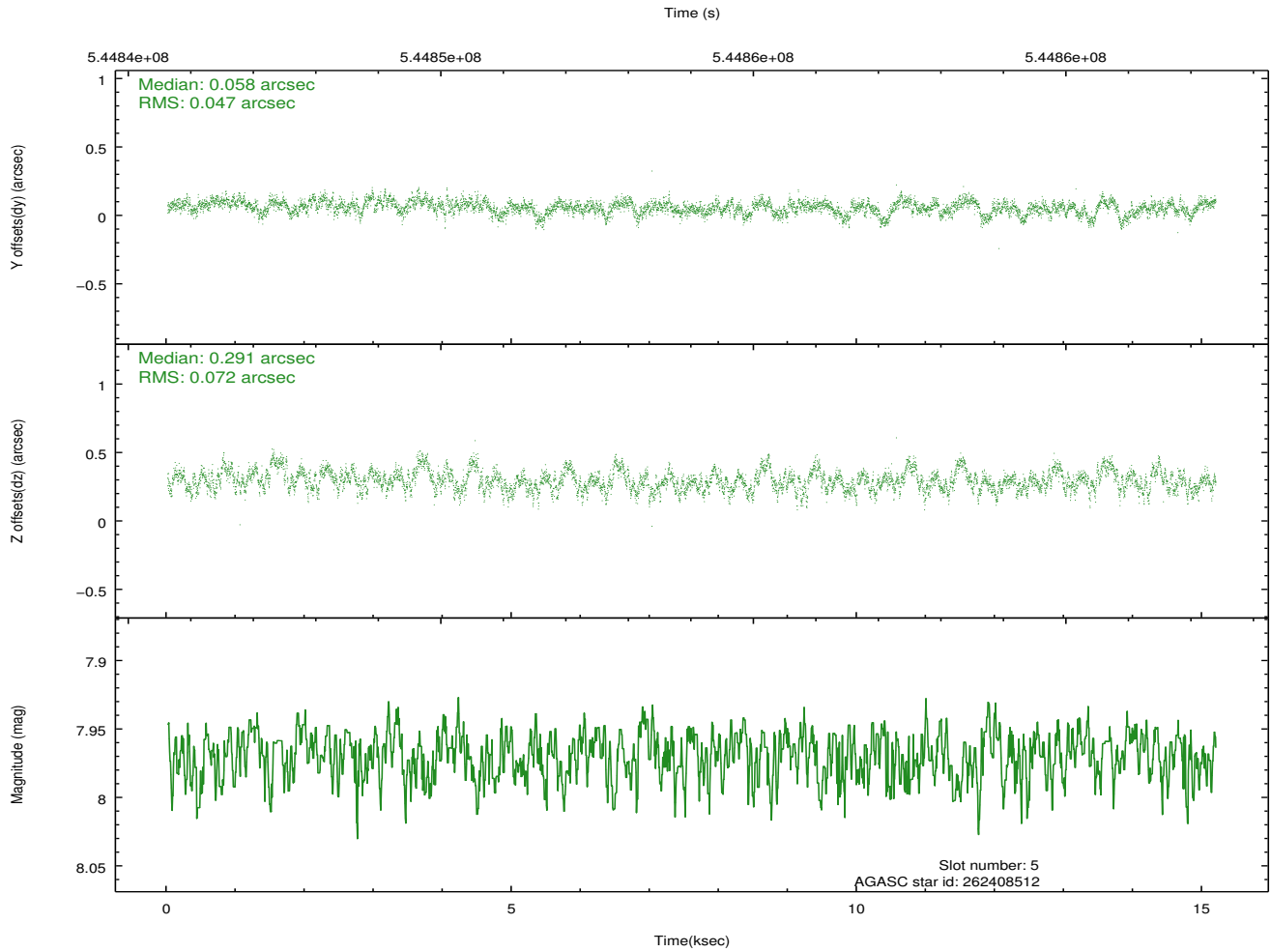
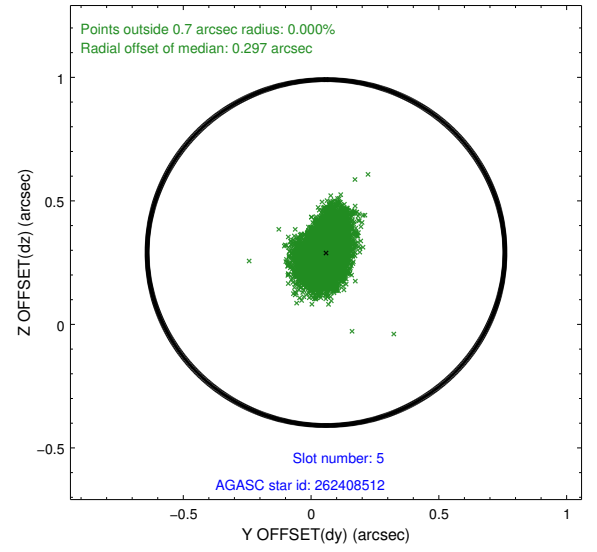
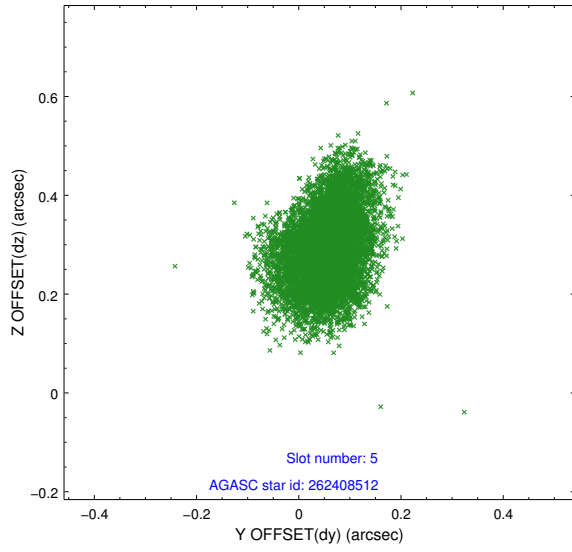


## 2.4.2 Slot 4

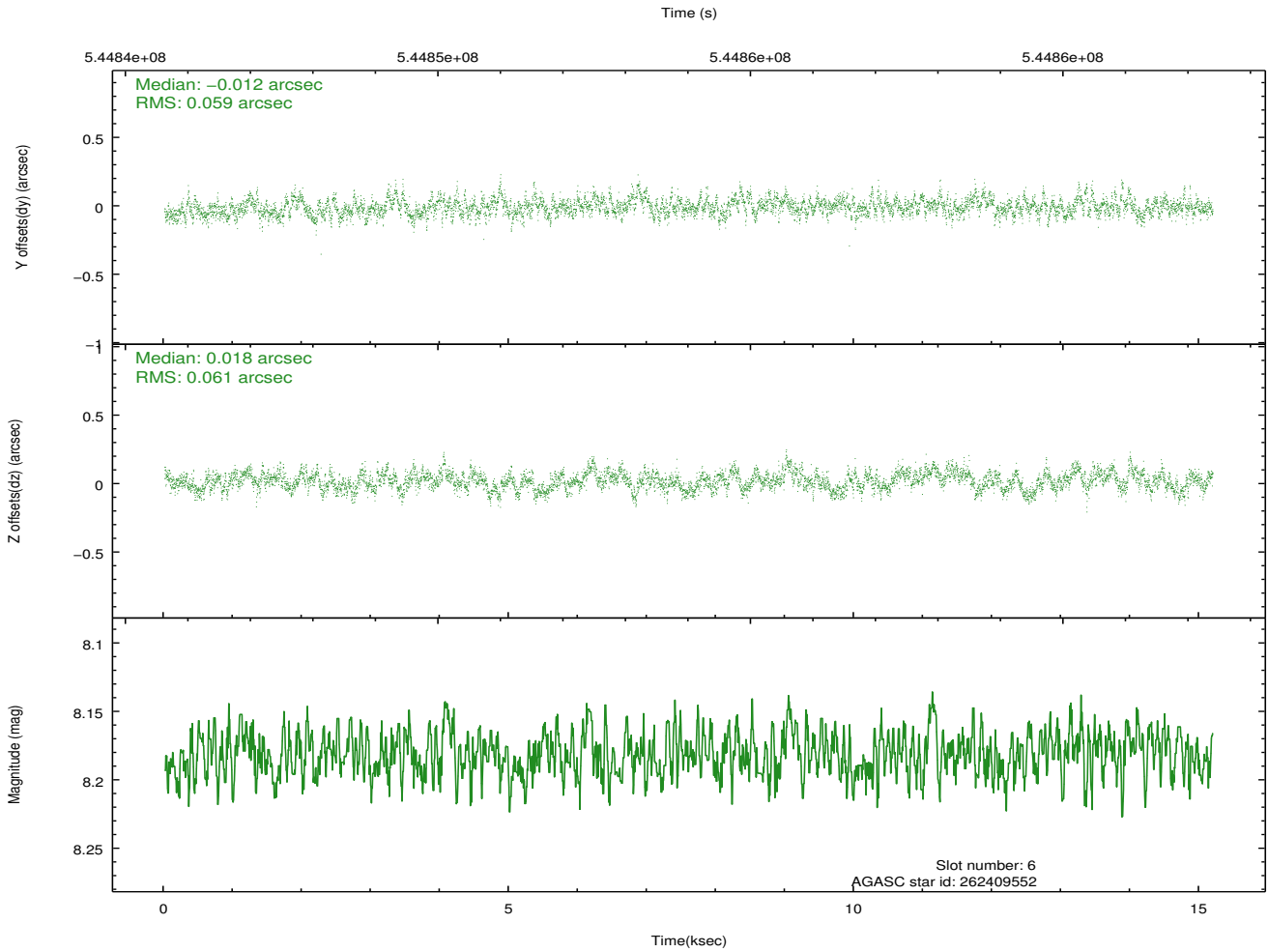
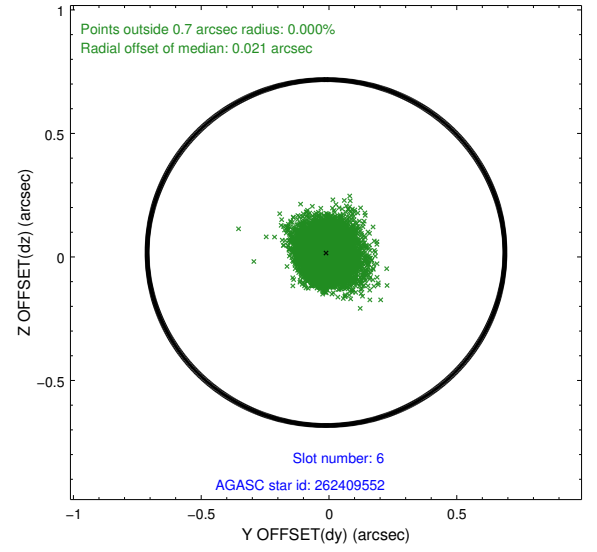
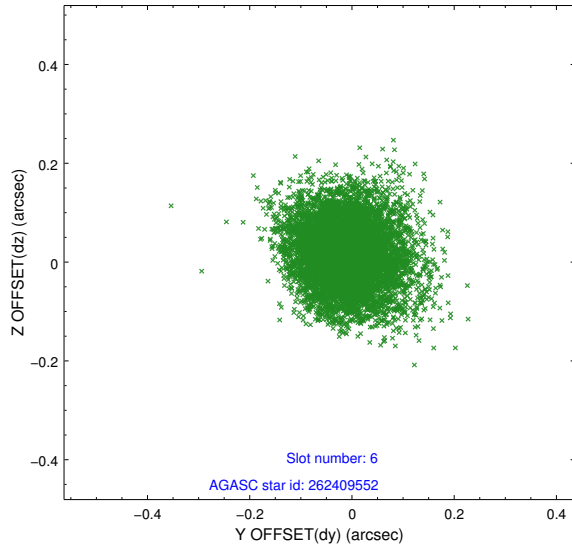




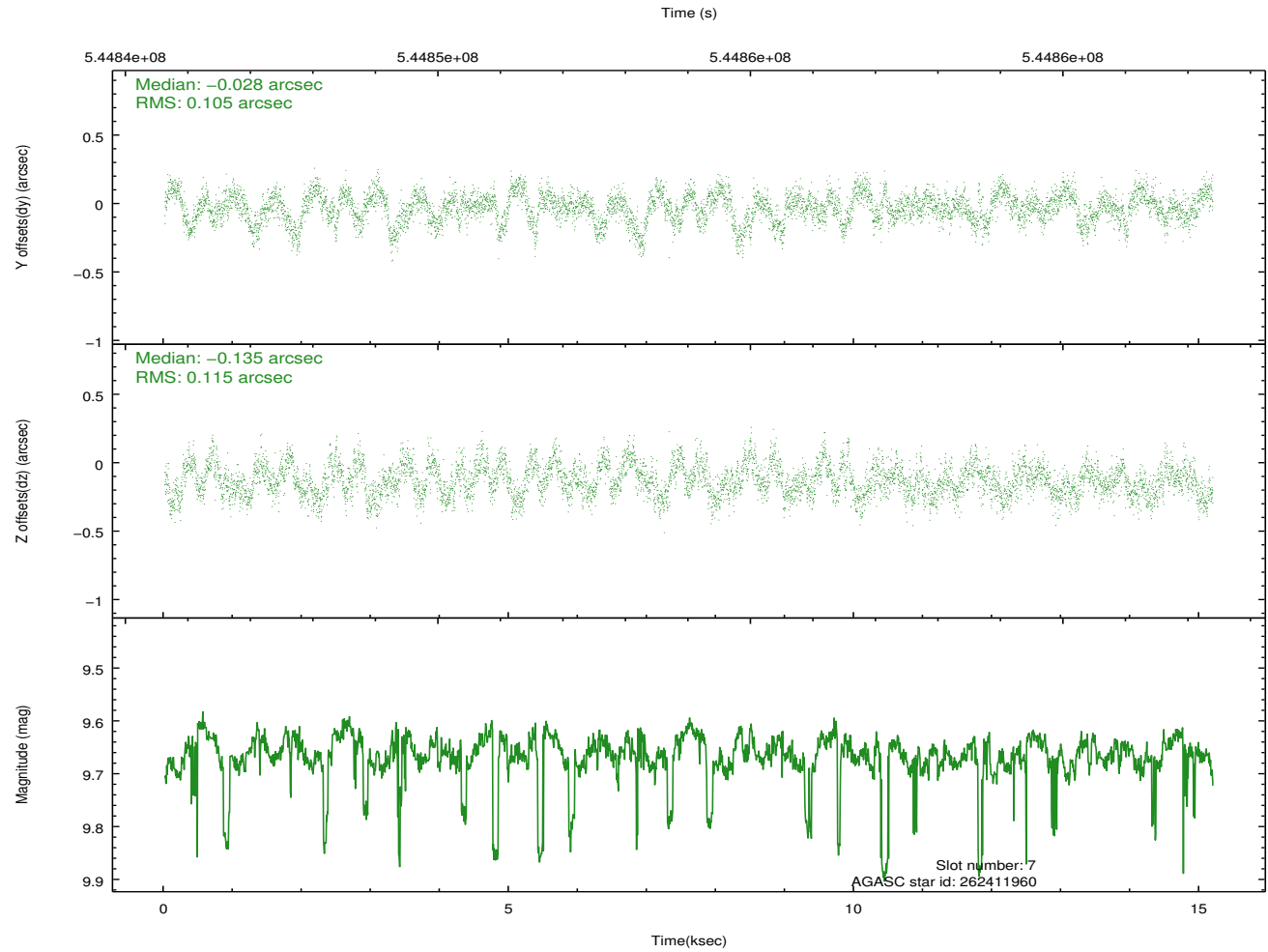
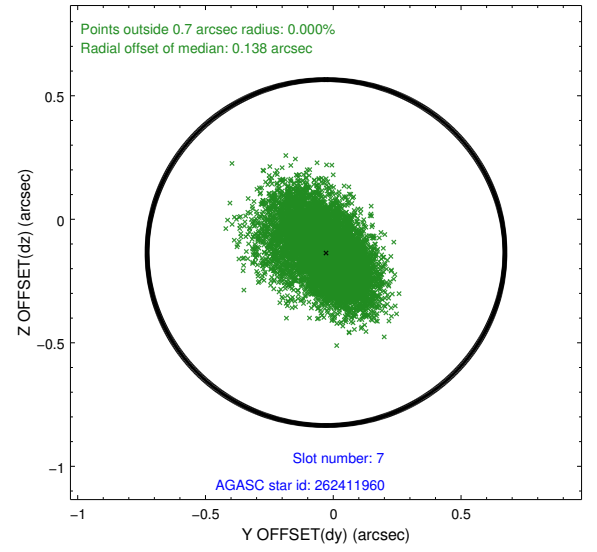
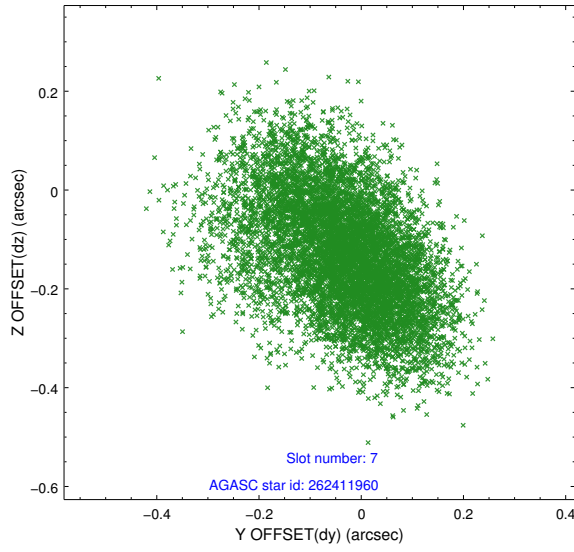
### 2.4.3 Slot 5



## 2.4.4 Slot 6

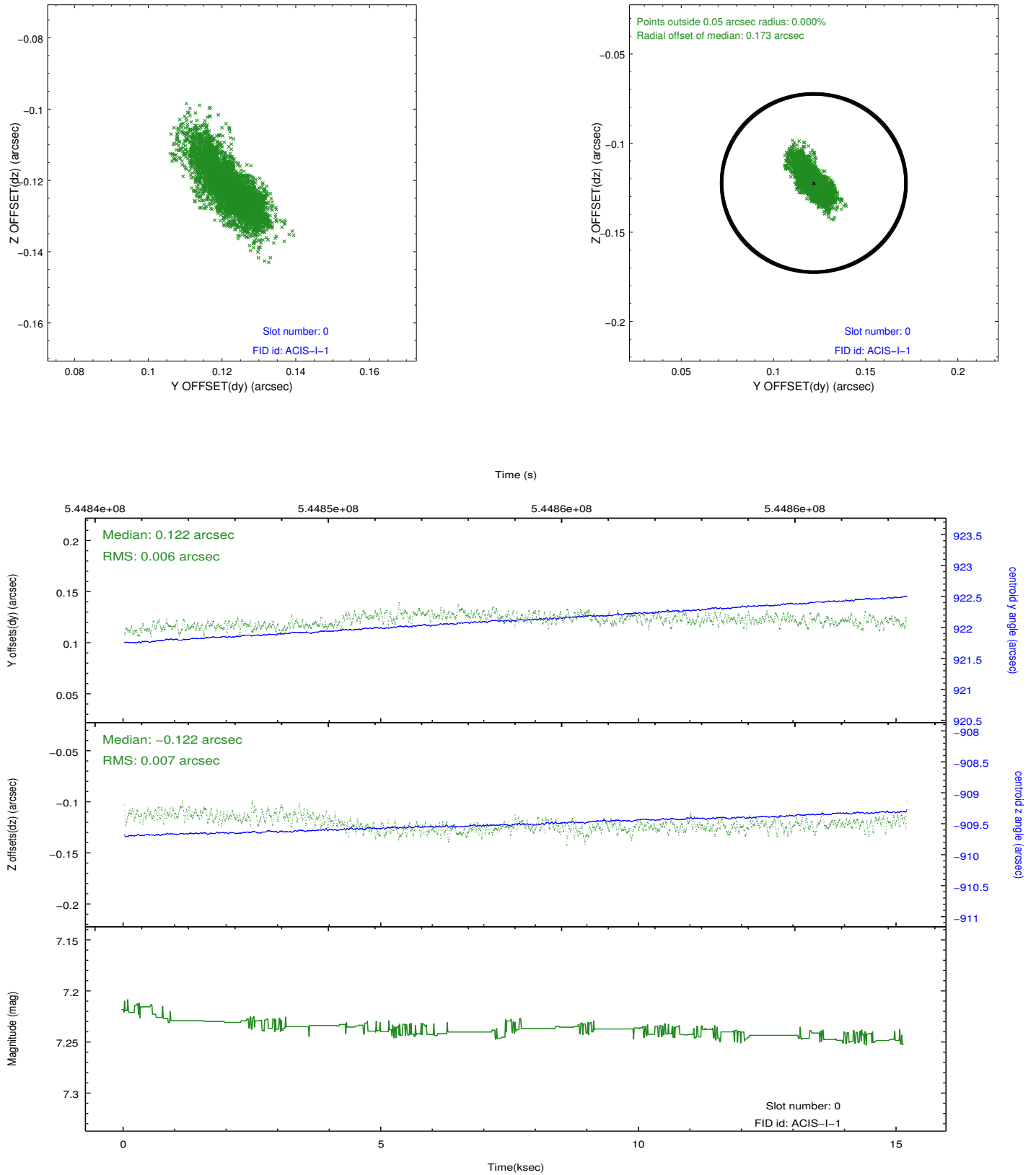


## 2.4.5 Slot 7

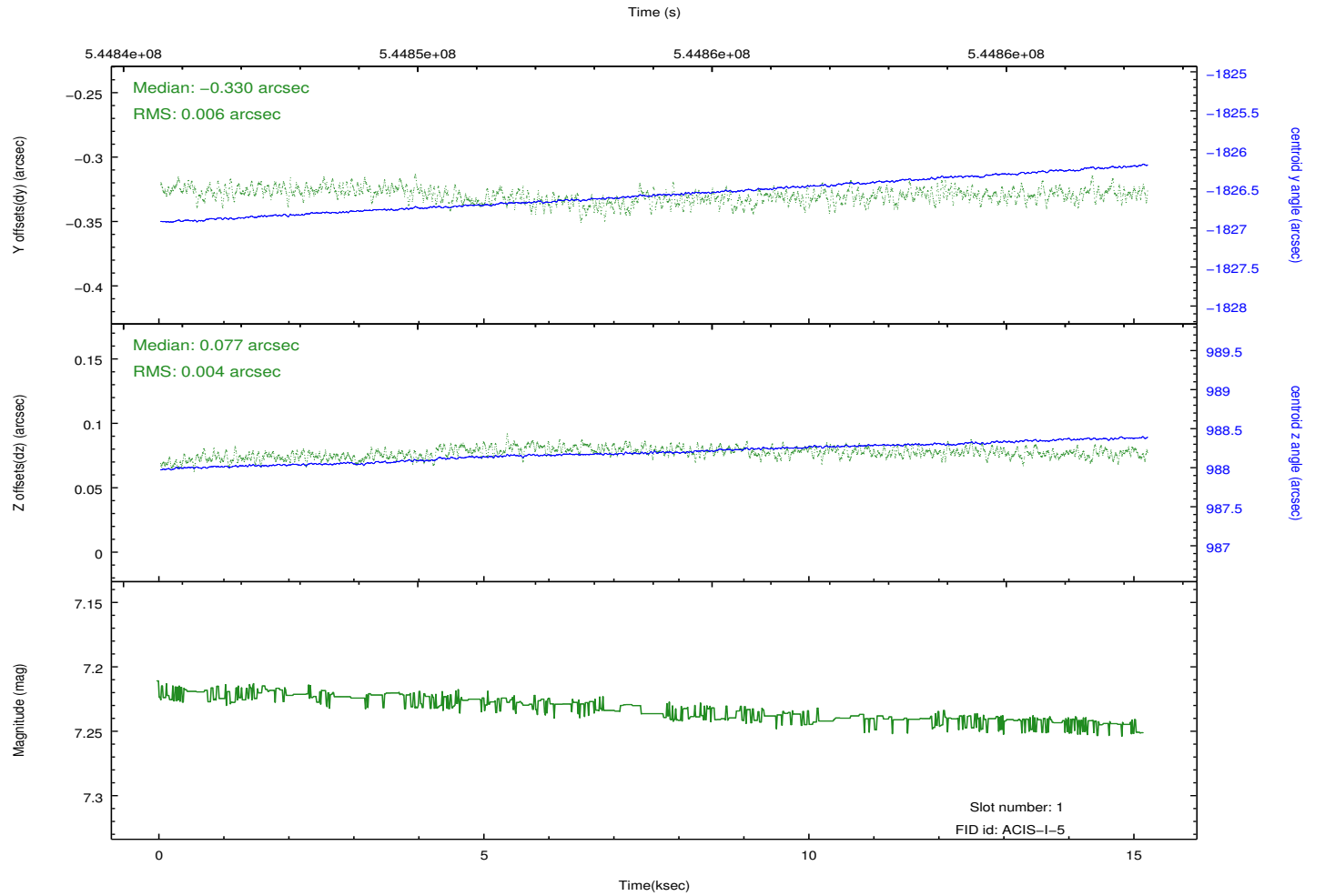
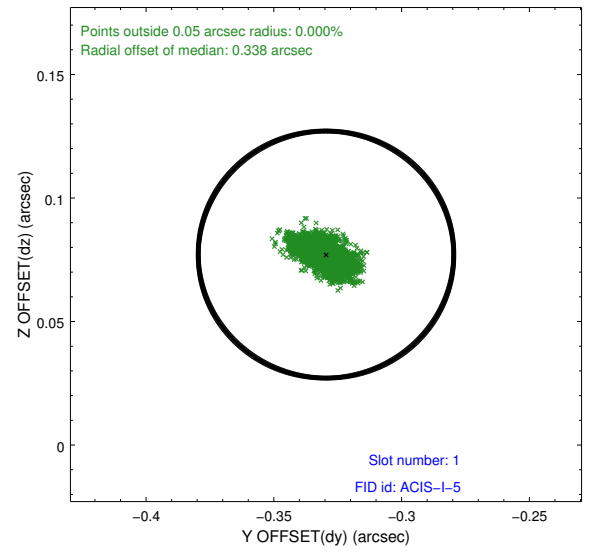
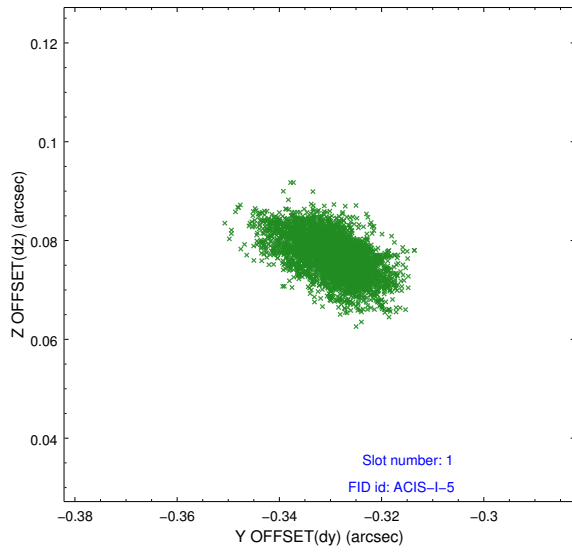


## 2.5 FID Slots

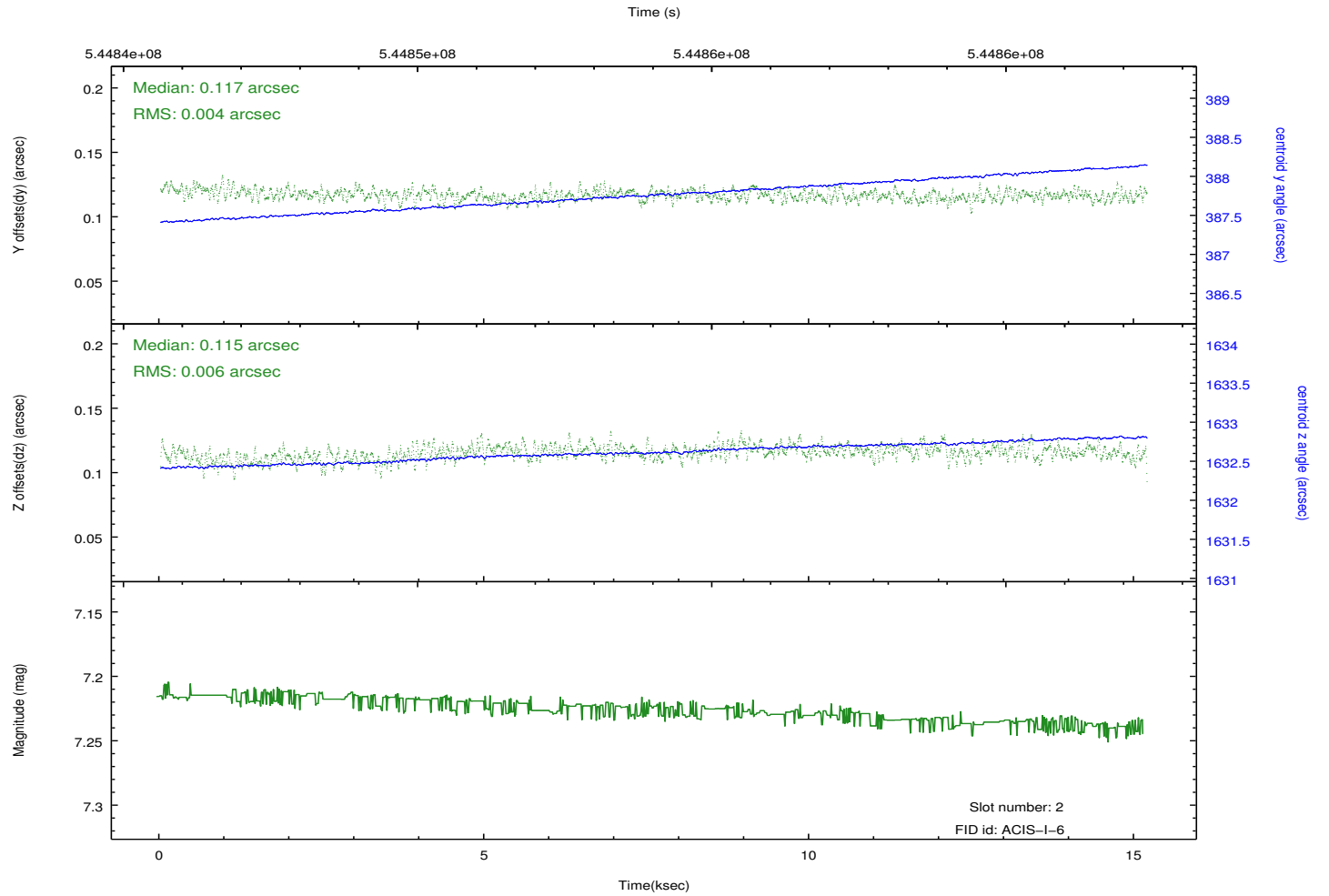
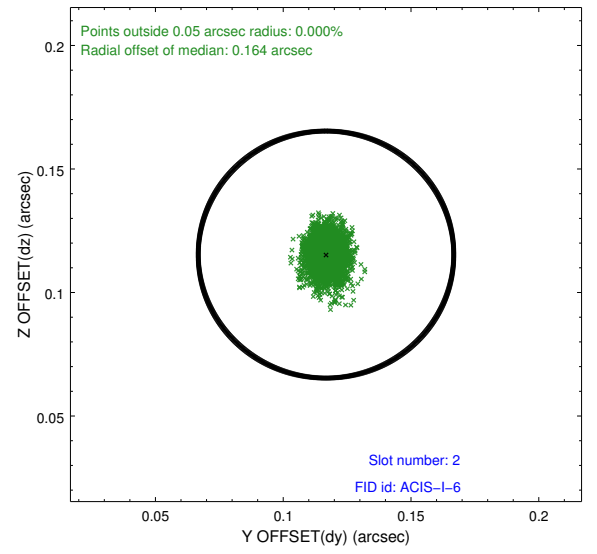
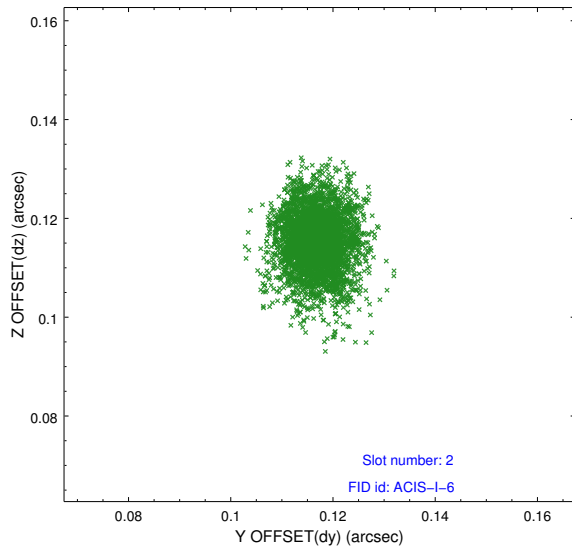
### 2.5.1 Slot 0



## 2.5.2 Slot 1



### 2.5.3 Slot 2



## A Summary

### A.1 Status

V&V Scientist	Jen Lauer
V&V Date (YYYY-MM-DD)	2015.04.08
V&V Edition	1
V&V Disposition and Status	OK
V&V Charge Time	14.777165143847

### A.2 Comments

Window constraint met.