

V&V Reference Report

L2 ASCDS Version : 7.6.9

Observation 1682 - L2 Version 001
Chandra X-Ray Center

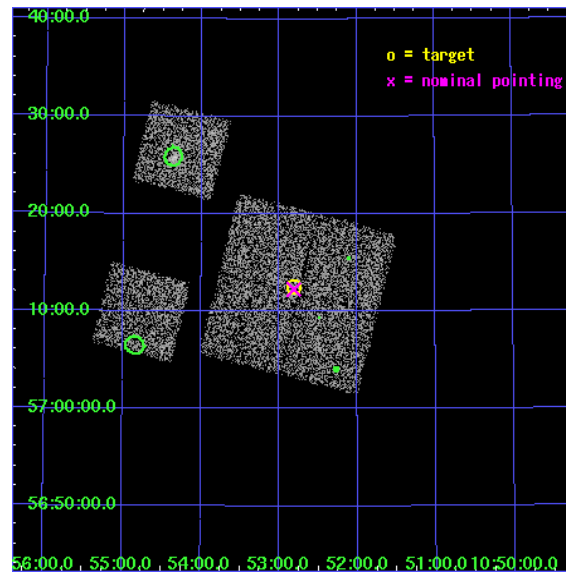
L2 Processing Date : Dec 11 2006

Contents

1	Front	2
2	OBI	3
2.1	OBI	3
2.1.1	Images	3
2.1.2	Bias	3
2.1.3	Parameters	4
2.1.4	Events	4
2.2	Compared Parameters	5
2.3	Aspect	6
2.4	Star Slots	9
2.4.1	Slot 3	9
2.4.2	Slot 4	10
2.4.3	Slot 5	11
2.4.4	Slot 6	12
2.4.5	Slot 7	13
2.5	FID Slots	14
2.5.1	Slot 0	14
2.5.2	Slot 1	15
2.5.3	Slot 2	16
3	Point Sources	17
A	Summary	18
A.1	Status	18
A.2	Comments	18

1 Front

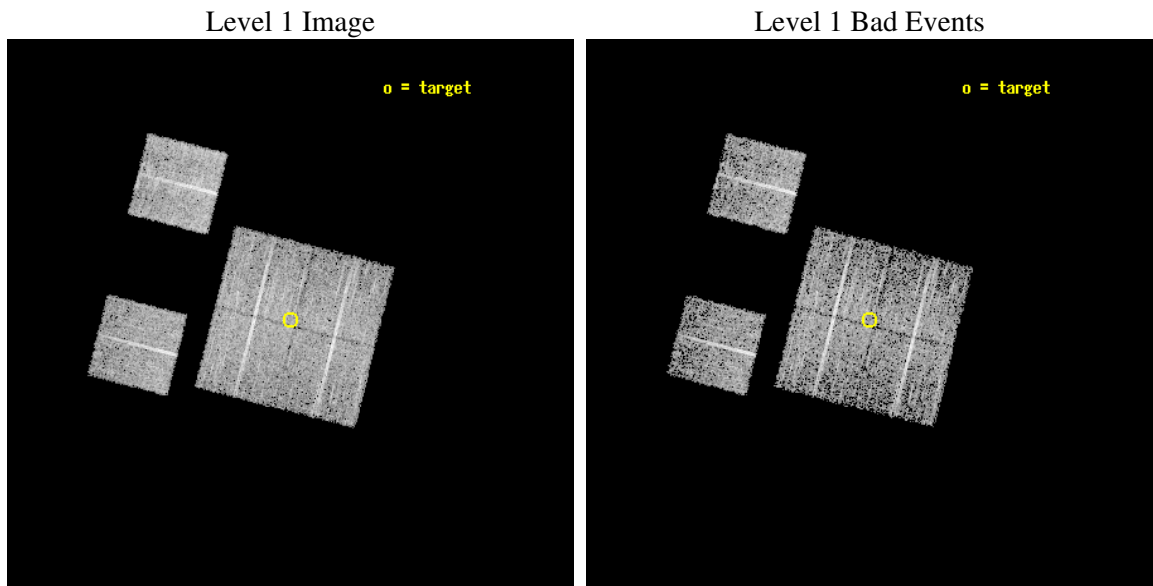
seq_num	900041
obs_id	1682
title	LOCKMAN HOLE SHALLOW SURVEY
observer	Dr. Stephen Murray
object	LOCKMAN HOLE #6
dtcycle	0
cycle	P
ra_targ	163.204167
dec_targ	57.208889
ra_nom	163.20296094717
dec_nom	57.204215015892
roll_nom	284.22853381013
revision	2
ontime	4758.4000044316
livetime	4698.146278411
ontime0	4758.4000044316
ontime1	4758.4000044316
ontime2	4758.4000044316
ontime3	4758.4000044316
ontime6	4758.4000044316
ontime8	4758.4000044316
l2events	18127



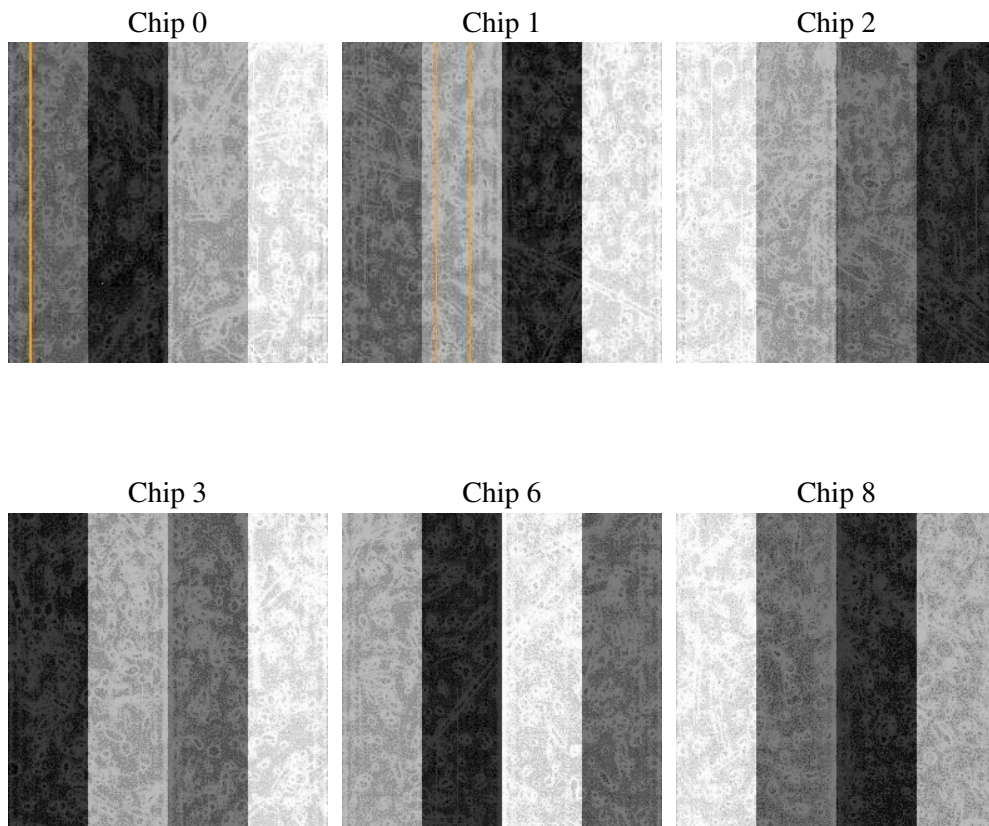
2 OBI

2.1 OBI

2.1.1 Images



2.1.2 Bias



2.1.3 Parameters

obi_num	0
ascdsver	7.6.9
caldbver	3.2.4
date	2006-12-11T17:47:42
revision	2

sched_exp_time	5000.000000
ontime	4764.2655261457
ontime0	4764.2655261457
ontime1	4764.2655261457
ontime2	4764.2655261457
ontime3	4764.2655261457
ontime6	4764.2655261457
ontime8	4764.2655261457
l1events	185686

2.1.4 Events

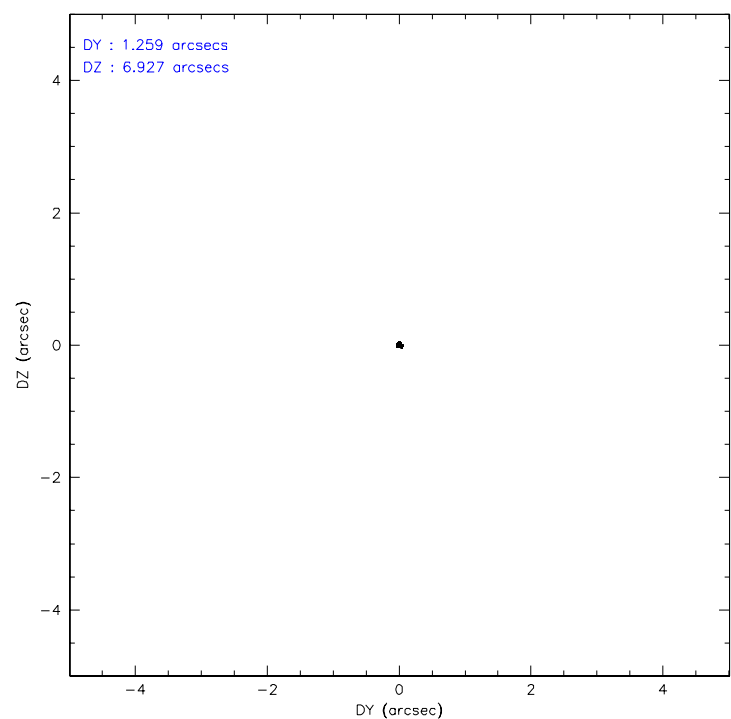
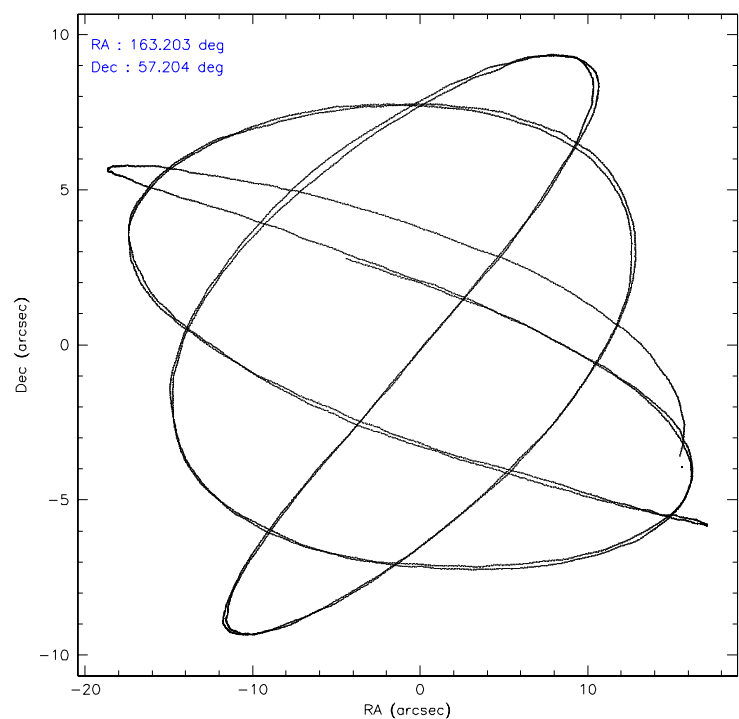
	ccd 0	ccd 1	ccd 2	ccd 3	ccd 6	ccd 8
level 1 events	27831	28496	30677	31068	29476	38138
rejected events	24298	24883	27211	27729	26136	30903
rejected %	87%	87%	88%	89%	88%	81%

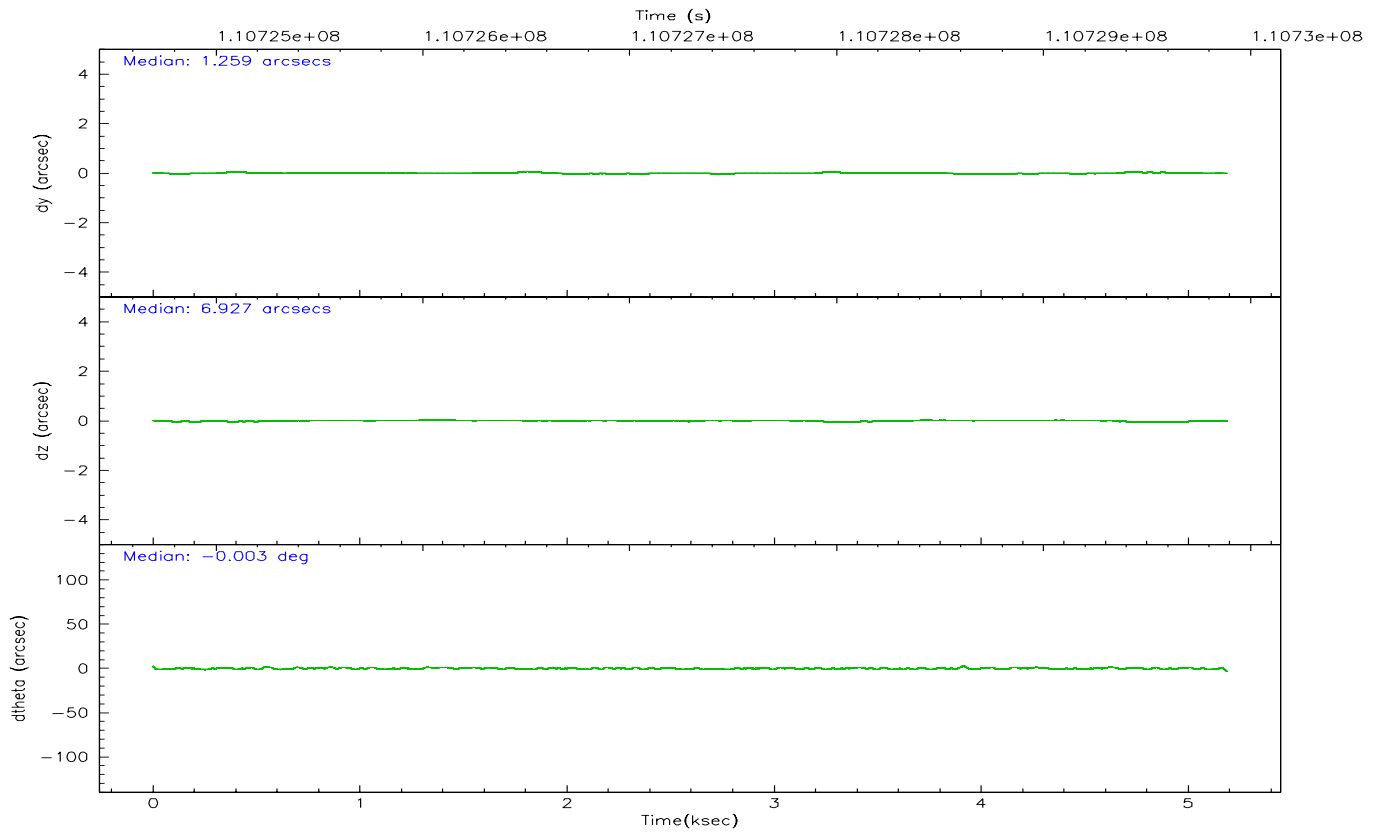
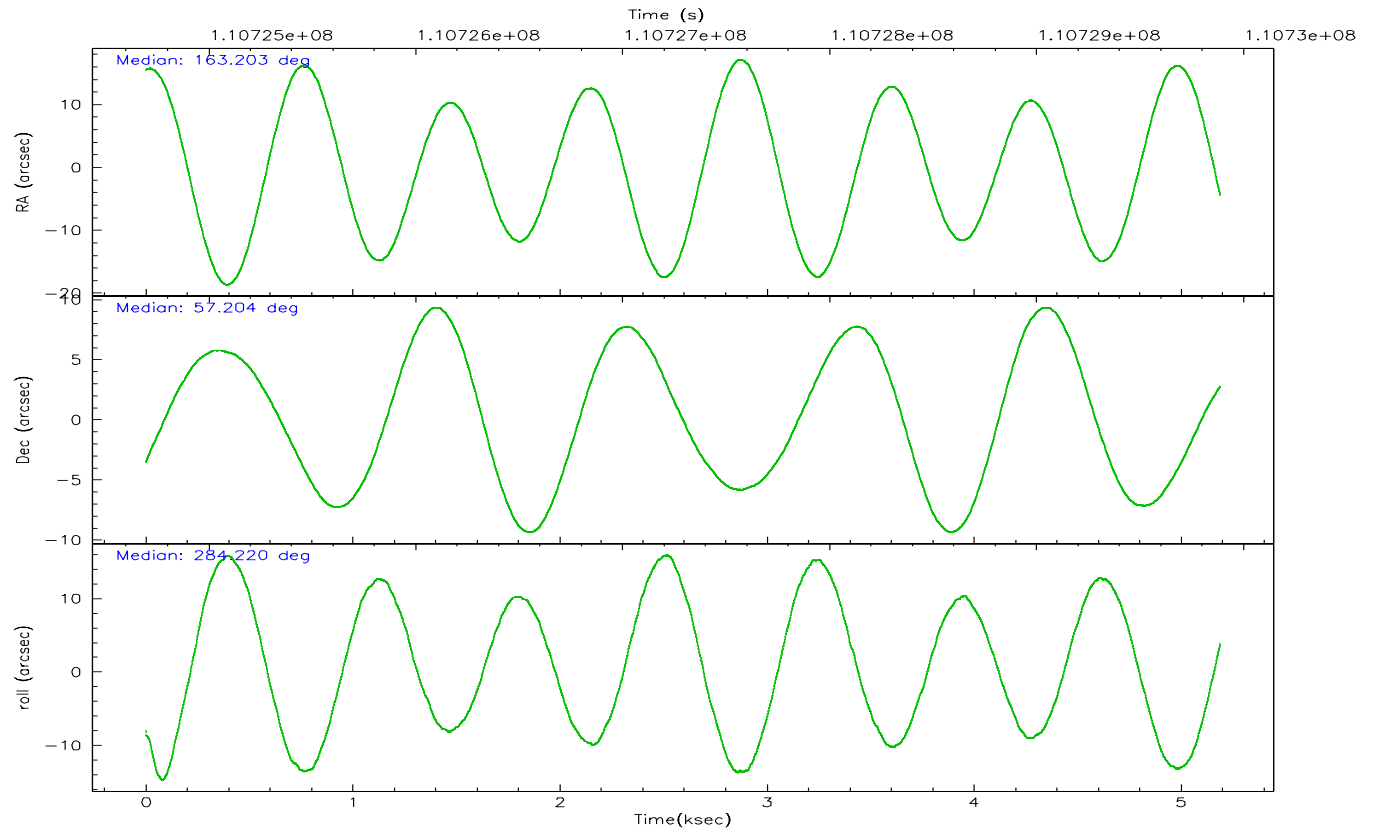
	ccd 0	ccd 1	ccd 2	ccd 3	ccd 6	ccd 8
grade 0 events	1507	1403	1527	1423	1299	2334
	5%	4%	4%	4%	4%	6%
grade 1 events	12	17	15	15	15	28
	0%	0%	0%	0%	0%	0%
grade 2 events	733	751	707	639	689	1557
	2%	2%	2%	2%	2%	4%
grade 3 events	339	372	333	372	324	761
	1%	1%	1%	1%	1%	1%
grade 4 events	306	376	320	334	330	765
	1%	1%	1%	1%	1%	2%
grade 5 events	1090	1196	972	1202	1289	1553
	3%	4%	3%	3%	4%	4%
grade 6 events	651	713	588	574	705	1821
	2%	2%	1%	1%	2%	4%
grade 7 events	23193	23668	26215	26509	24825	29319
	83%	83%	85%	85%	84%	76%

2.2 Compared Parameters

Parameter	Planned	Actual	Parameter	Planned	Actual
Instrument	ACIS	ACIS	Obspar format version number	6	6
Detector	ACIS-012368	ACIS-012368	Obspar file type	PREDICTED	ACTUAL
Grating	NONE	NONE	Obspar update status	NONE	UPDATED
Data mode	FAINT	FAINT	Number of optional ACIS chips dropped	0	0
Observation mode	POINTING	POINTING	On-chip summing requested	N	N
Pointing RA	163.167445	163.2029609471735	Subarray requested	NONE	NONE
Pointing Dec	57.223853	57.204215015892	Alternating exposures requested	N	N
Pointing Roll	284.049715	284.2285338101337	Primary exposure time	0.000000	3.2
SIM focus pos (mm)	-0.782348	-0.7809083437167272			
SIM defocus (mm)	0	0.001439871863259334			
SIM translation stage pos (mm)	-233.592463	-233.5874344608287			
SIM translation stage offset (mm)	0	-0.005018542100998502			
Observation start time	110724885.184000	110724509.59697			
Observation start date	2001-07-05T12:53:41	2001-07-05T12:48:29			
Observation end time	110729885.184000	110730019.48469			
Observation end date	2001-07-05T14:17:01	2001-07-05T14:20:19			
Read mode	TIMED	TIMED			

2.3 Aspect



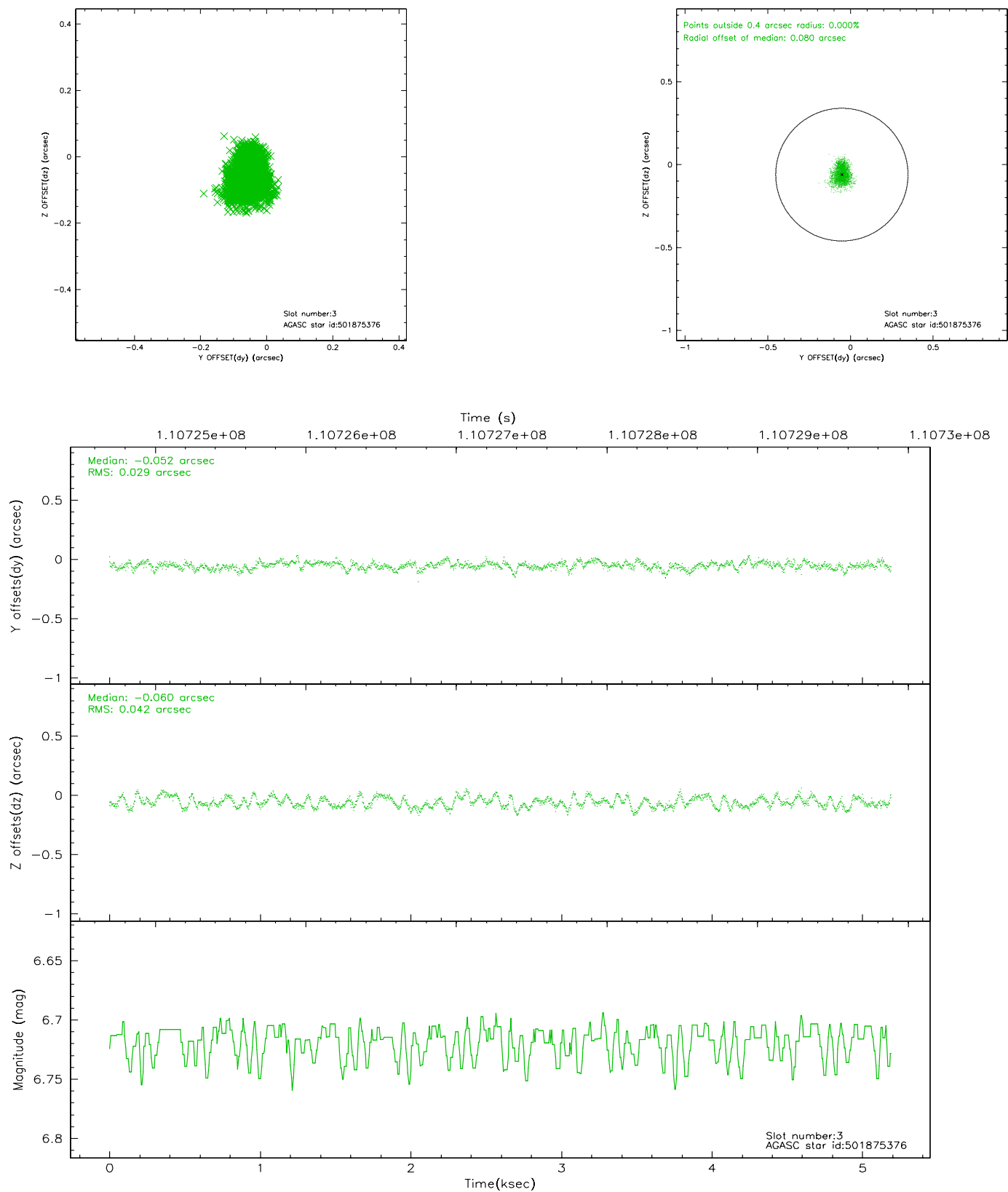


Slot Statistics

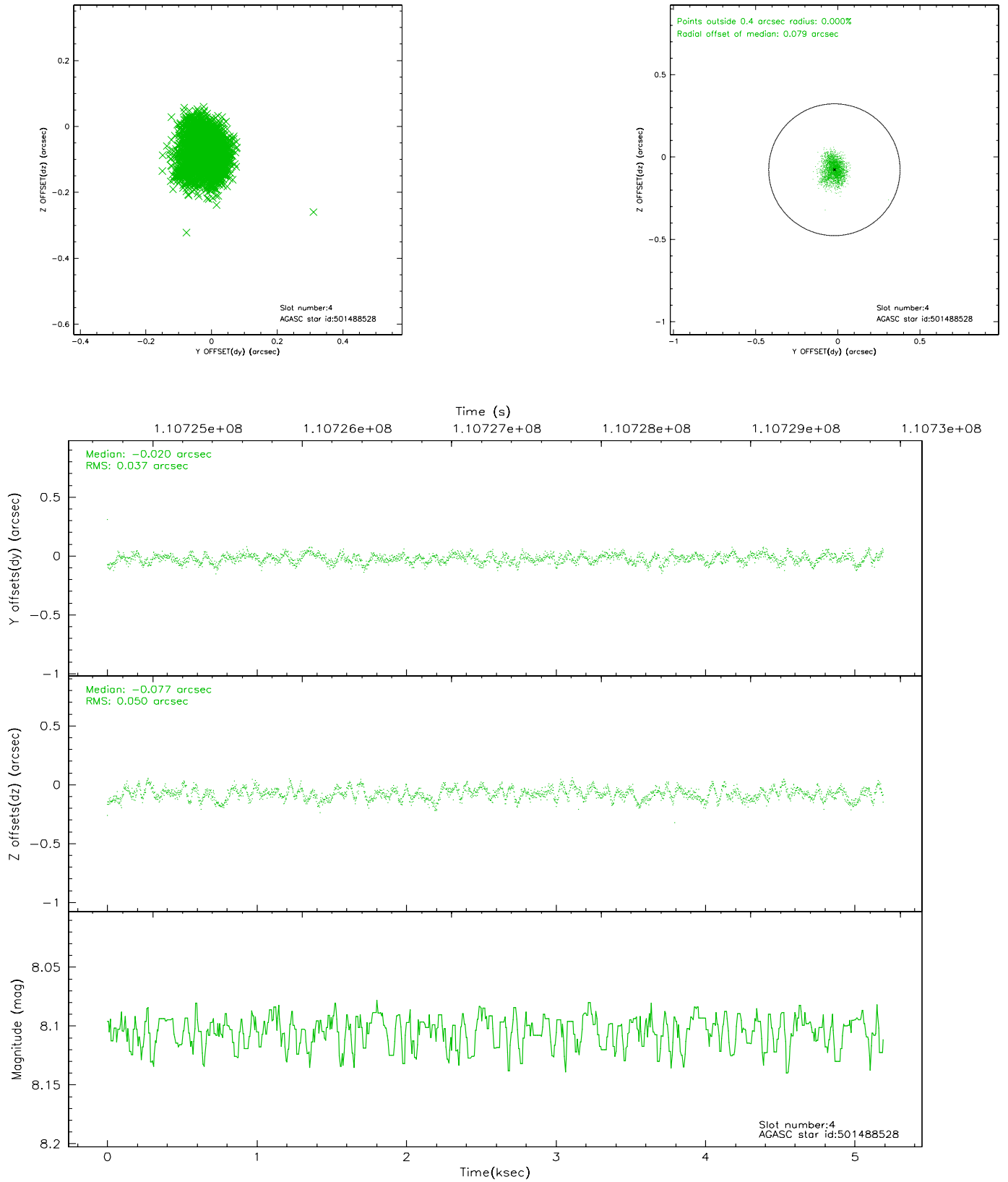
slot	status	id	mag	n_pts	med_dy	med_dz	dr1	dr2	ra	dec	mean_y	mean_z
0	FID	ACIS-I-2	7.16	1266	-0.025	-0.044	0.009	0.015	0.000000	0.000000	-755.61	-836.74
1	FID	ACIS-I-4	7.18	1265	-0.093	0.035	0.005	0.010	0.000000	0.000000	2157.84	1068.97
2	FID	ACIS-I-5	7.23	1266	0.017	0.078	0.009	0.014	0.000000	0.000000	-1807.91	1068.14
3	GUIDE	501875376	6.72	2533	-0.052	-0.060	0.055	0.088	164.111621	57.502963	-544.15	2018.20
4	GUIDE	501488528	8.10	2531	-0.020	-0.077	0.067	0.106	162.150935	57.312270	-802.89	-1835.82
5	GUIDE	501876472	8.99	2530	0.014	0.064	0.088	0.138	163.621724	57.867447	-2039.91	1405.85
6	GUIDE	501486400	9.29	2531	0.124	-0.045	0.095	0.155	162.514901	56.545412	2048.47	-1847.09
7	GUIDE	501877264	9.30	2528	-0.069	0.113	0.086	0.139	163.254394	57.702218	-1629.58	579.44

2.4 Star Slots

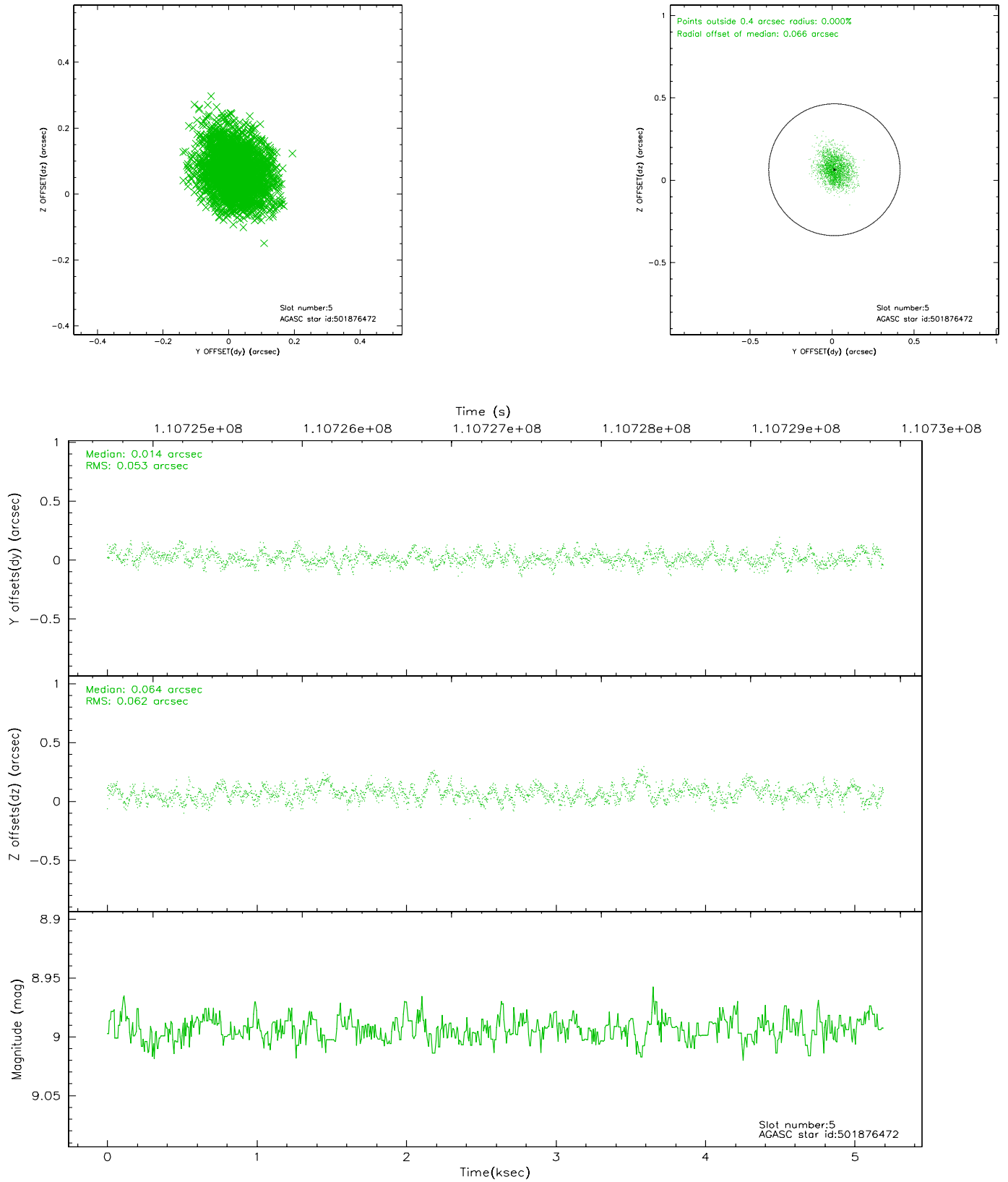
2.4.1 Slot 3



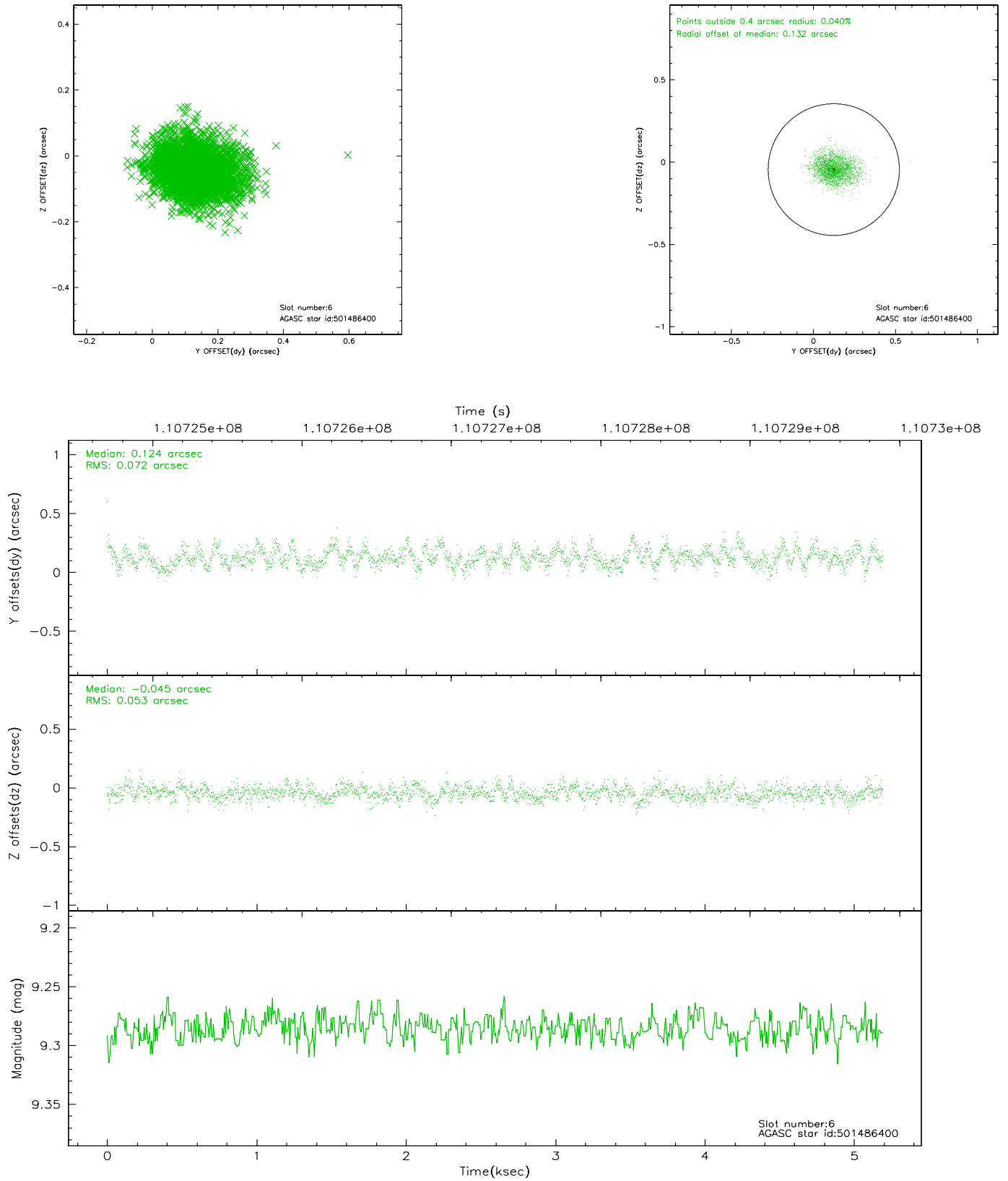
2.4.2 Slot 4



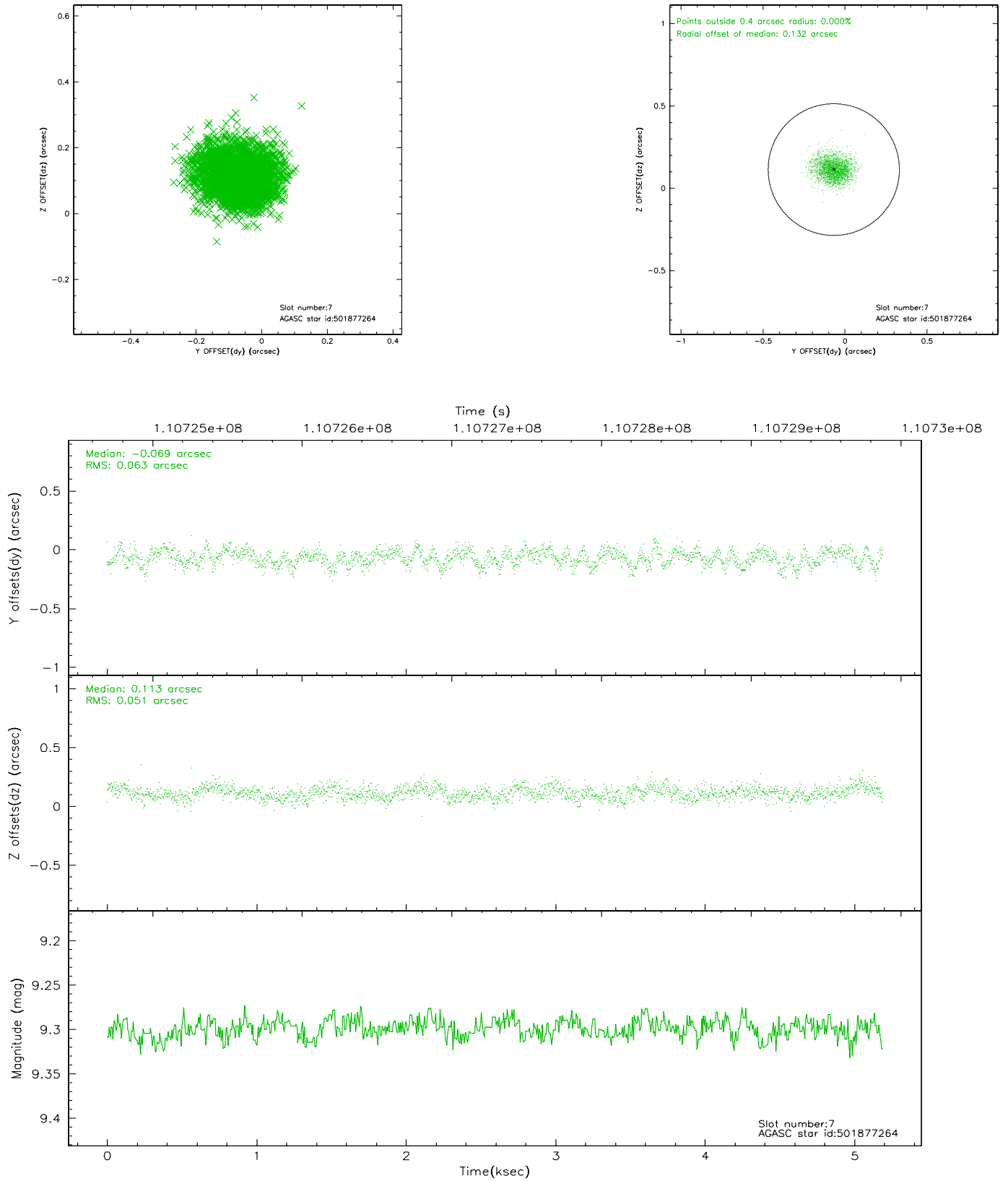
2.4.3 Slot 5



2.4.4 Slot 6

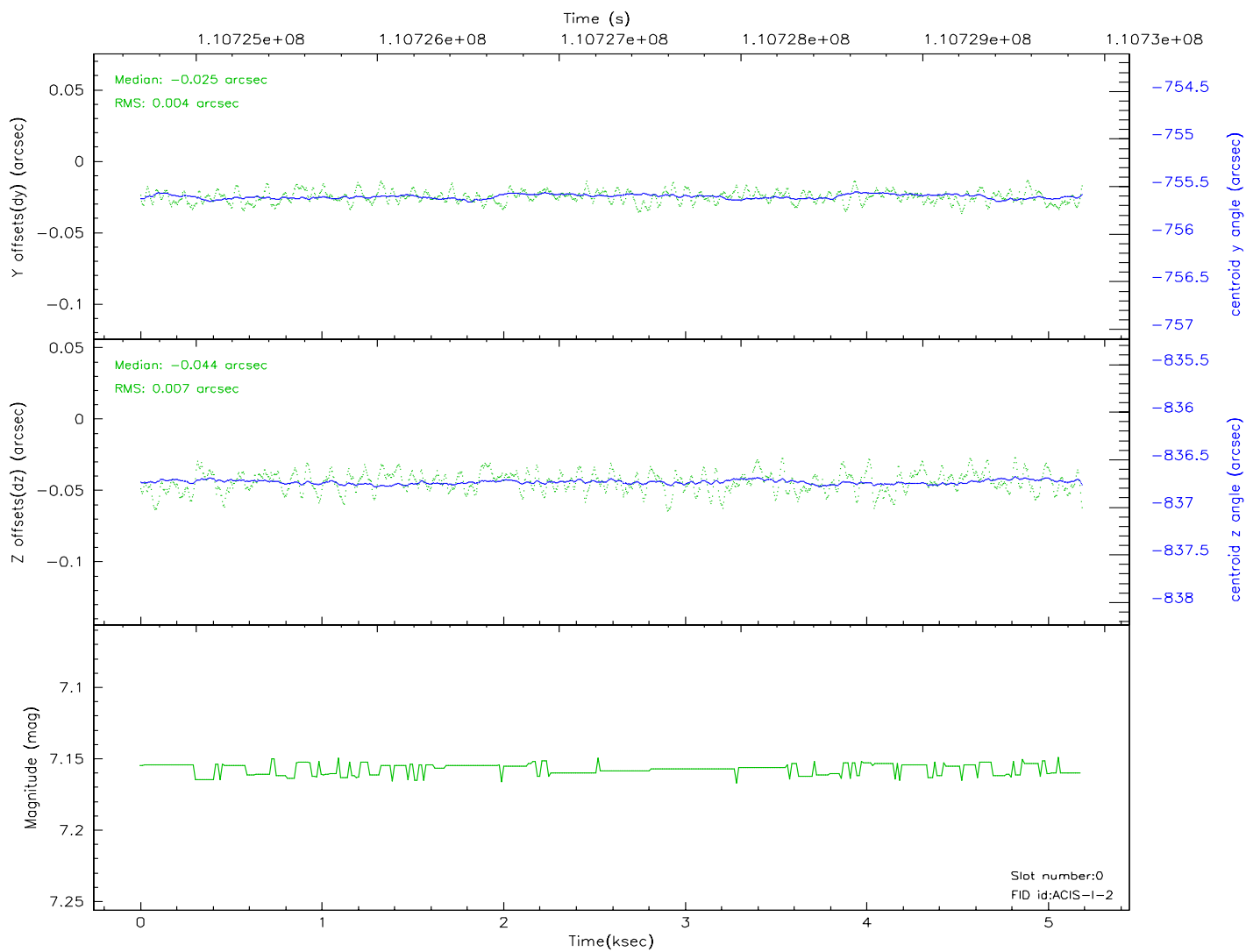
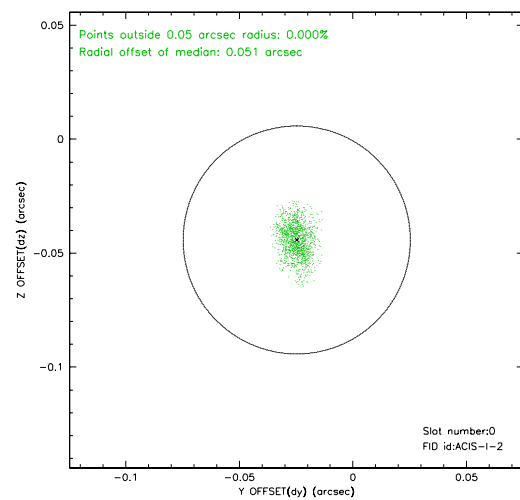
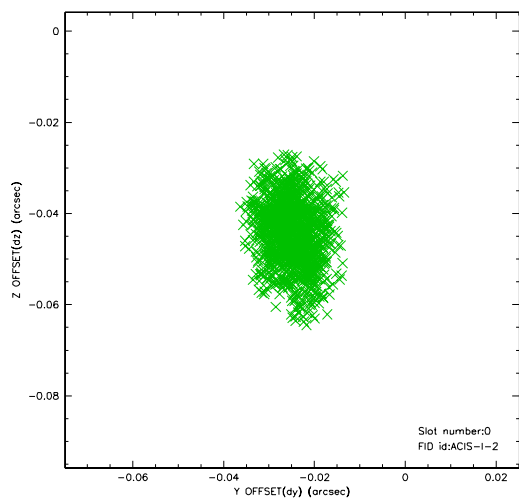


2.4.5 Slot 7

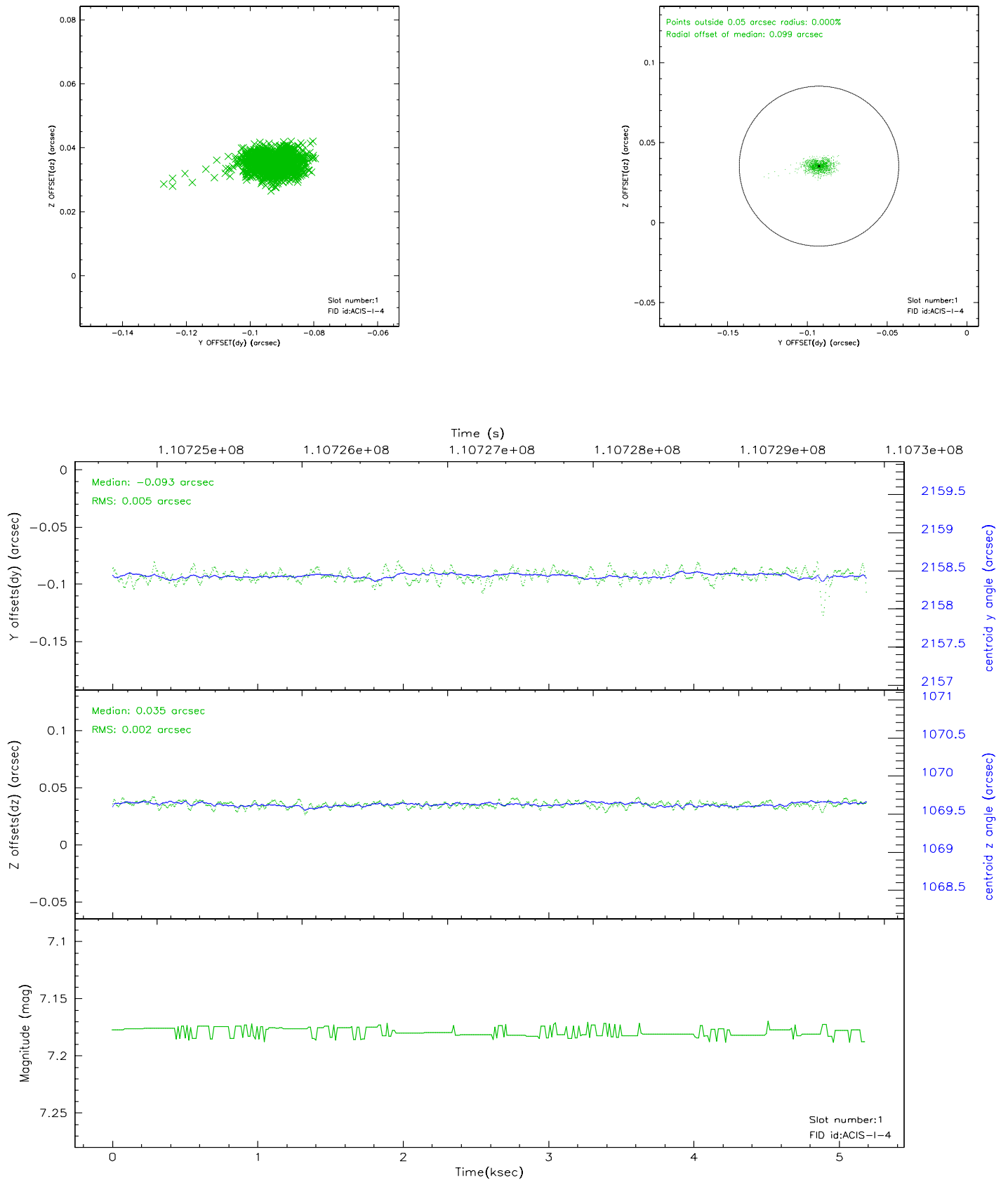


2.5 FID Slots

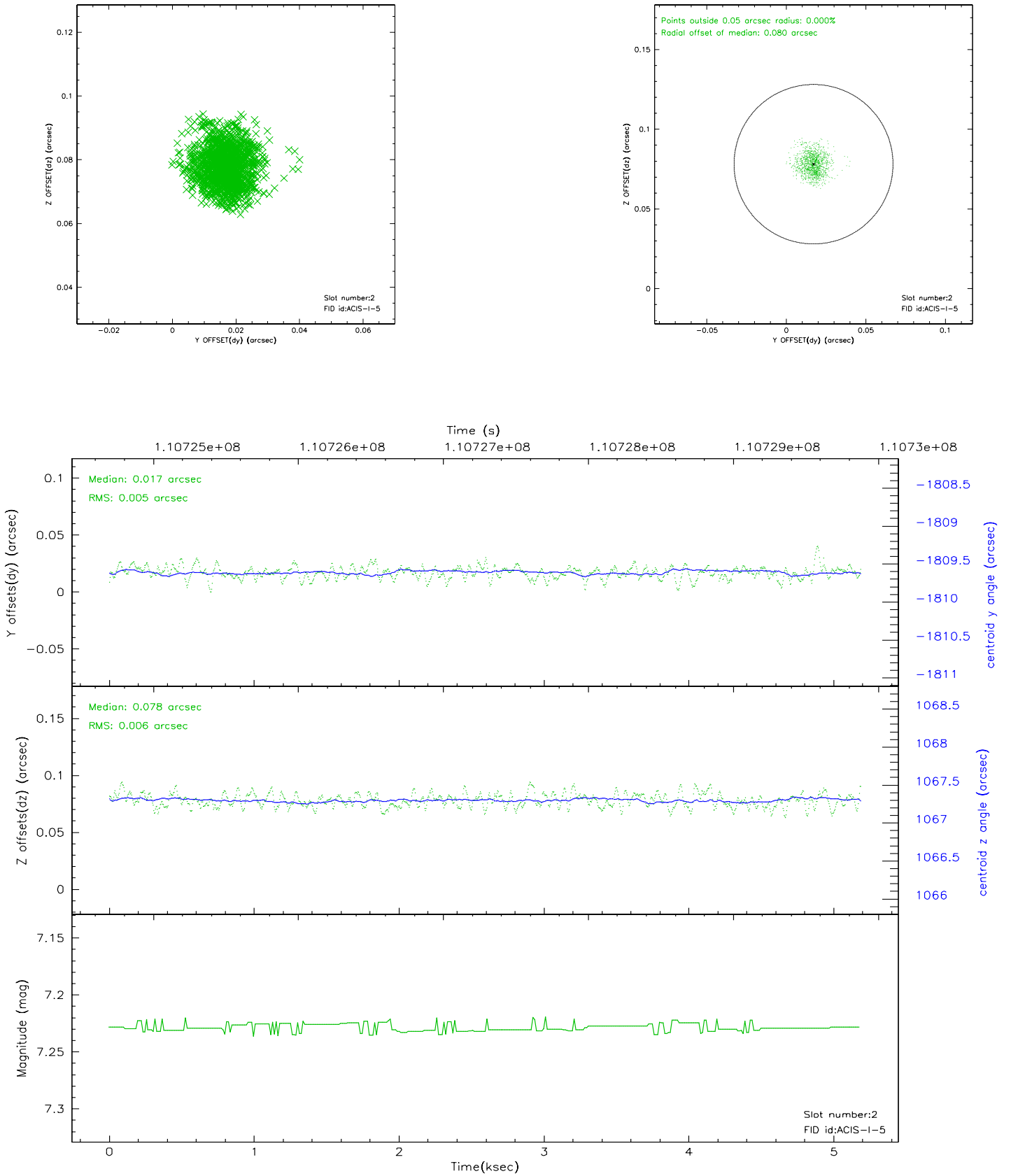
2.5.1 Slot 0



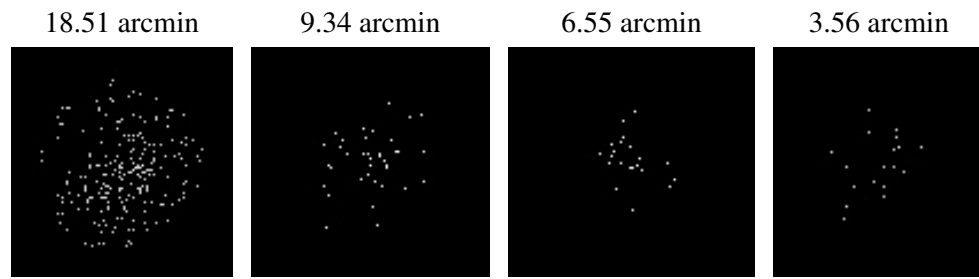
2.5.2 Slot 1



2.5.3 Slot 2



3 Point Sources



A Summary

A.1 Status

V&V Scientist	Jen Lauer
V&V Date (YYYY-MM-DD)	2006.12.11
V&V Edition	1
V&V Disposition and Status	OK
V&V Charge Time	4.8

A.2 Comments