

V&V Reference Report

L2 ASCDS Version : 10.2.1

Observation 16472 - L2 Version 2
Chandra X-Ray Center

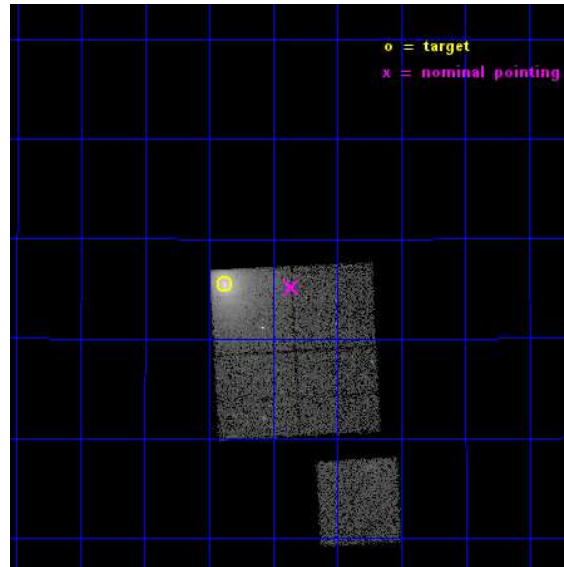
L2 Processing Date : Dec 10 2014

Contents

1	Front	2
2	OBI	3
2.1	OBI	3
2.1.1	Images	3
2.1.2	Bias	3
2.1.3	Parameters	4
2.1.4	Events	4
2.2	Compared Parameters	5
2.3	Aspect	6
2.4	Star Slots	9
2.4.1	Slot 3	9
2.4.2	Slot 4	10
2.4.3	Slot 5	11
2.4.4	Slot 6	12
2.4.5	Slot 7	13
2.5	FID Slots	14
2.5.1	Slot 0	14
2.5.2	Slot 1	15
2.5.3	Slot 2	16
A	Summary	17
A.1	Status	17
A.2	Comments	17

1 Front

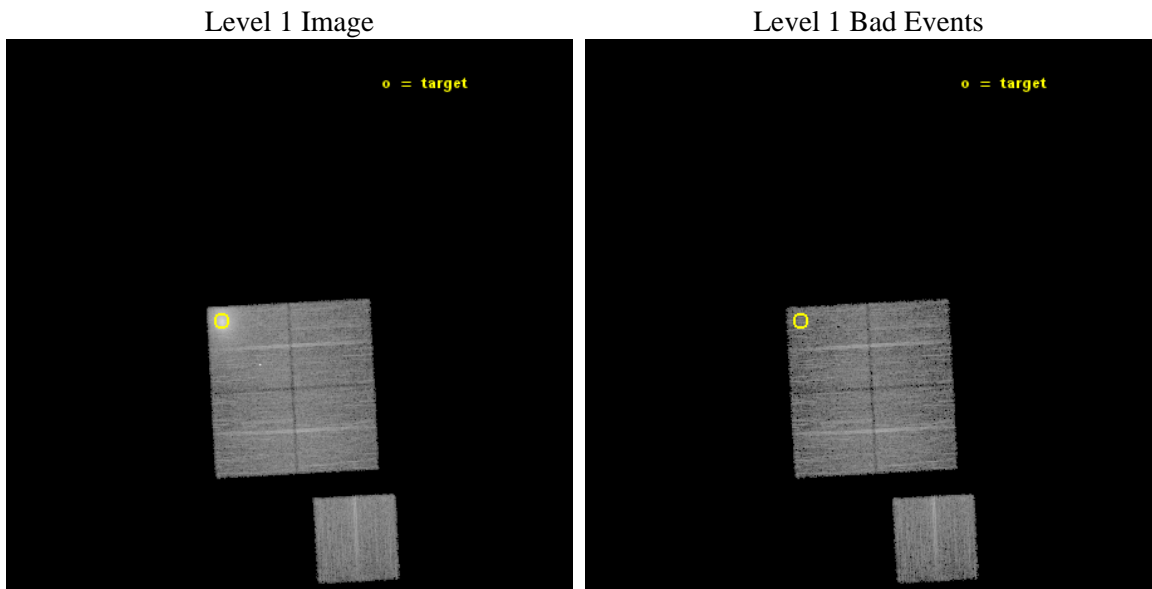
seq_num	890094	Sequence number
obs_id	16472	Observation id
title	AO-15 Calibration Observations of A1795	Proposal title
observer	Dr. CXC Calibration	Principal investigator
object	A1795	Source name
dtcycle	0	
cycle	P	events from which exps? Prim/Second/Both
ra_targ	207.219583	Observer's specified target RA [deg]
dec_targ	26.590833	Observer's specified target Dec [deg]
ra_nom	207.08925062047	Nominal RA [deg]
dec_nom	26.585995753322	Nominal Dec [deg]
roll_nom	176.90038309108	Nominal Roll [deg]
revision	2	Processing version of data
ontime	15081.459115684	Sum of GTIs [s]
livetime	14884.408749529	Livetime [s]
ontime0	15084.600116014	Sum of GTIs [s]
ontime1	15081.459115684	Sum of GTIs [s]
ontime2	15081.459115624	Sum of GTIs [s]
ontime3	15084.600116014	Sum of GTIs [s]
ontime6	15084.600116014	Sum of GTIs [s]
l2events	98741	Number of level 2 events



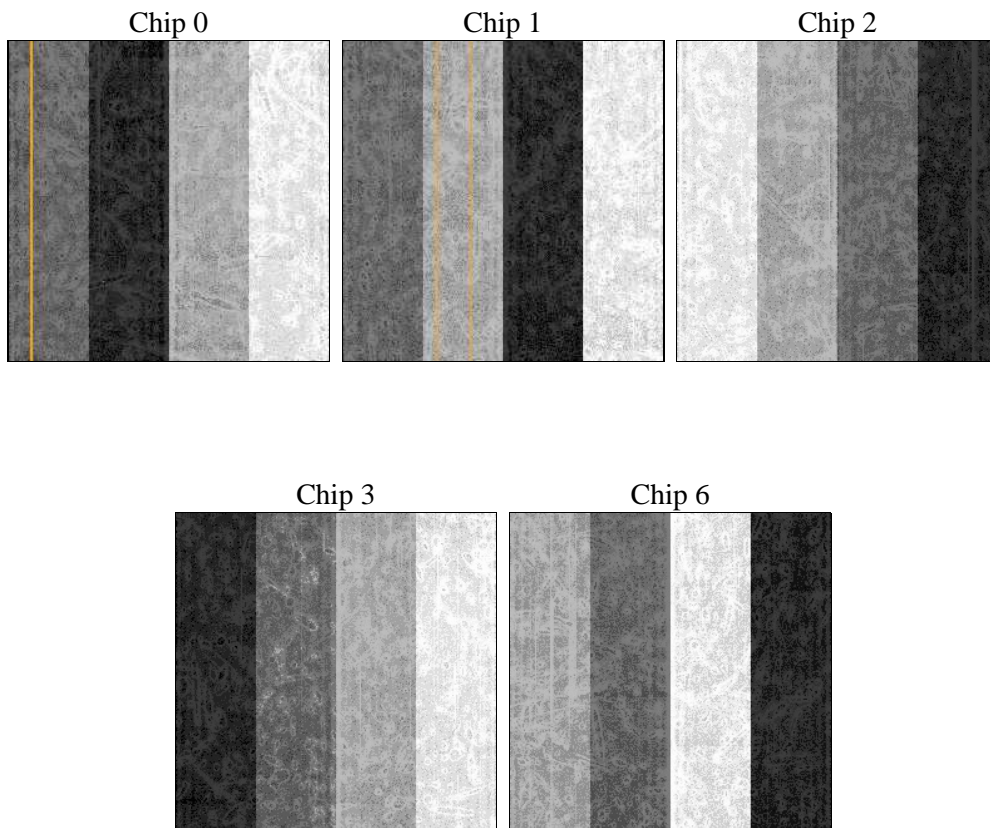
2 OBI

2.1 OBI

2.1.1 Images



2.1.2 Bias



2.1.3 Parameters

obi_num	0	Obi number	sched_exp_time	15000.000000	[s] Scheduled observation exposure time
ascdsver	10.3.1	Processing system revision	ontime	15081.459115684	Sum of GTIs [s]
caldsver	4.6.4	 	ontime0	15084.600116014	Sum of GTIs [s]
date	2014-12-11T03:21:19	Date and time of file creation	ontime1	15081.459115684	Sum of GTIs [s]
revision	2	Processing version of data	ontime2	15081.459115624	Sum of GTIs [s]
			ontime3	15084.600116014	Sum of GTIs [s]
			ontime6	15084.600116014	Sum of GTIs [s]
			l1events	405731	Number of level 1 events

2.1.4 Events

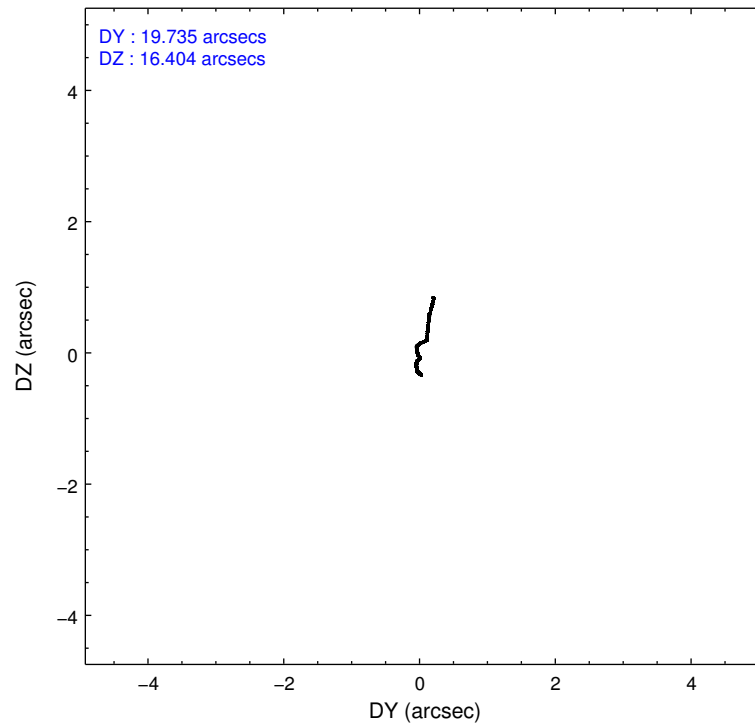
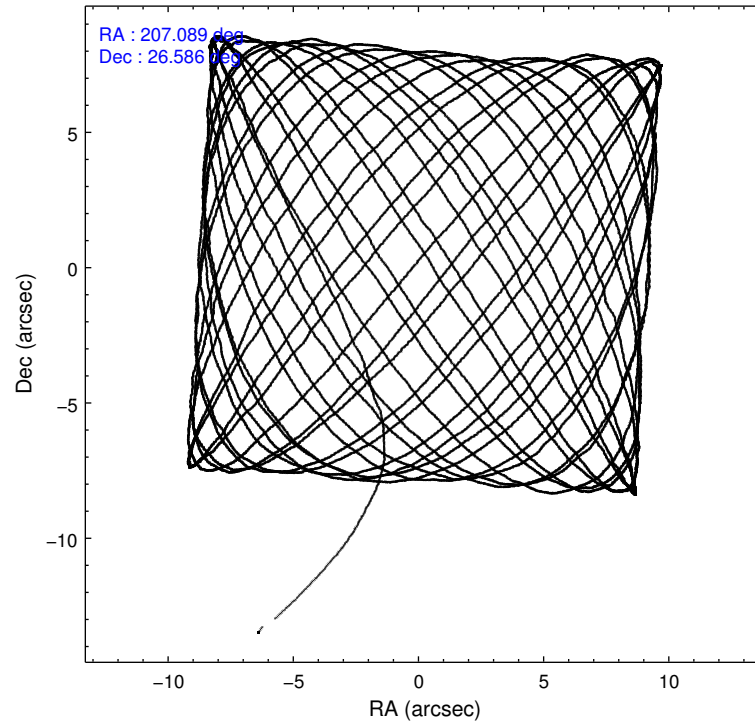
	ccd 0	ccd 1	ccd 2	ccd 3	ccd 6
level 1 events	64173	127638	70096	71048	72776
rejected events	54408	56818	61424	61506	63967
rejected %	84%	44%	87%	86%	87%

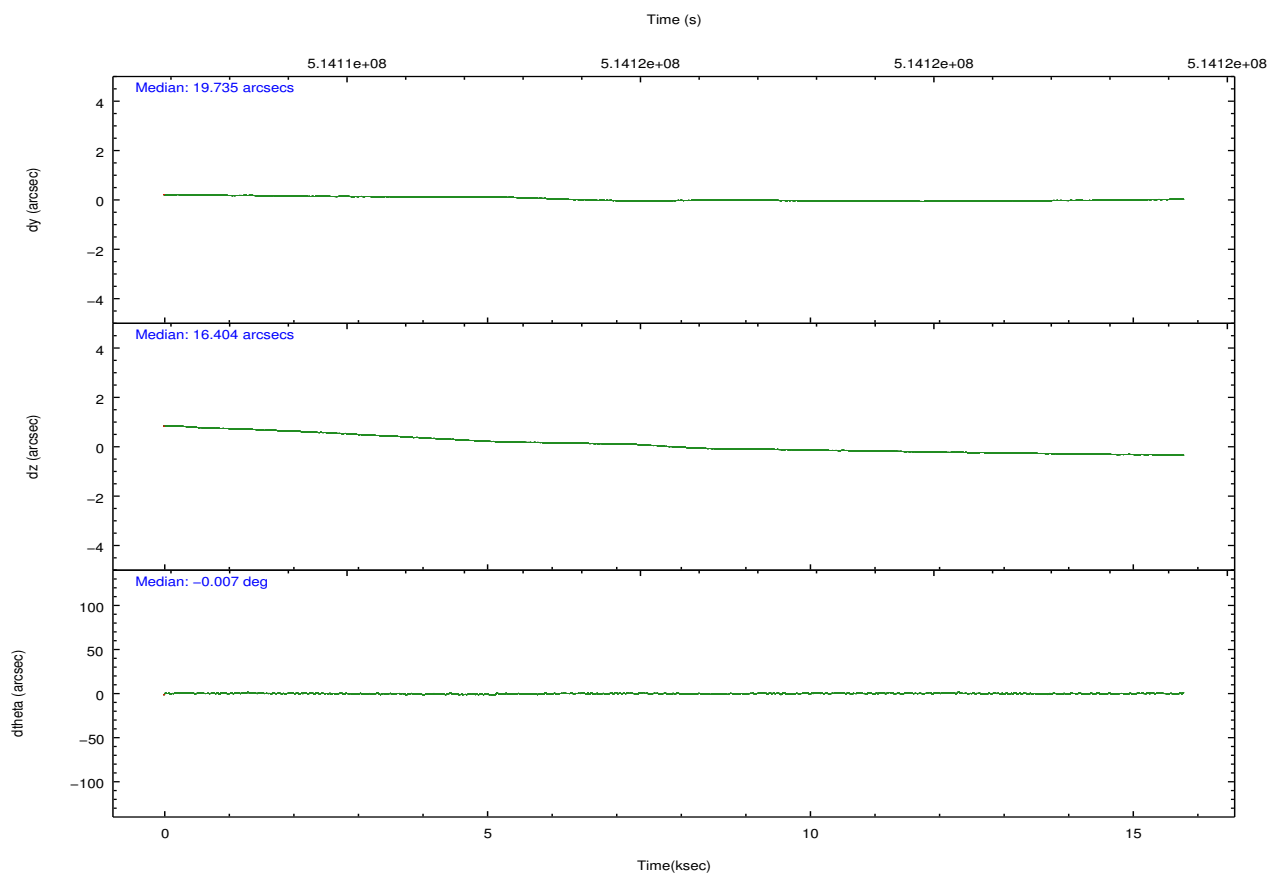
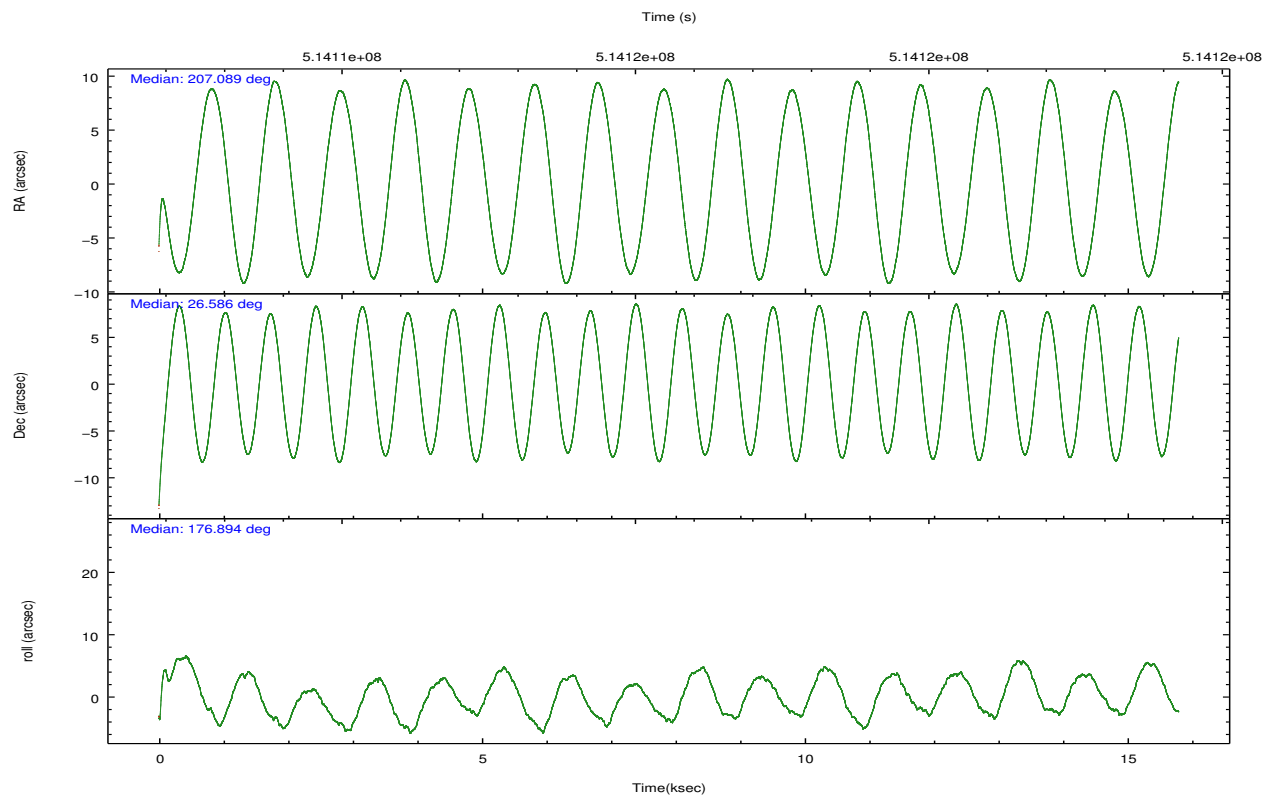
	ccd 0	ccd 1	ccd 2	ccd 3	ccd 6
grade 0 events	3810	51745	3171	3856	3056
	5%	40%	4%	5%	4%
grade 1 events	39	233	39	37	45
	0%	0%	0%	0%	0%
grade 2 events	2246	9046	2148	1988	1929
	3%	7%	3%	2%	2%
grade 3 events	946	2989	844	890	890
	1%	2%	1%	1%	1%
grade 4 events	909	3031	859	915	883
	1%	2%	1%	1%	1%
grade 5 events	3454	3815	3350	3952	3891
	5%	2%	4%	5%	5%
grade 6 events	1854	4024	1651	1898	2053
	2%	3%	2%	2%	2%
grade 7 events	50915	52755	58034	57512	60029
	79%	41%	82%	80%	82%

2.2 Compared Parameters

Parameter	Planned	Actual	Parameter	Planned	Actual
Instrument	ACIS	ACIS	Obspar format version number	7	7
Detector	ACIS-01236	ACIS-01236	Obspar file type	PREDICTED	ACTUAL
Grating	NONE	NONE	Obspar update status	NONE	UPDATED
Data mode	VFAINT	VFAINT	Number of optional ACIS chips dropped	0	0
Observation mode	POINTING	POINTING	On-chip summing requested	N	N
[deg] Pointing RA	207.116653	207.089250620474	Subarray requested	NONE	NONE
[deg] Pointing Dec	26.598551	26.58599575332238	Alternating exposures requested	N	N
[deg] Pointing Roll	176.679440	176.9003830910774	[s] Primary exposure time	0.000000	3.1
[s] Window start time (MET)	512697667.184000	512697667.184000			
[s] Window stop time (MET)	515203267.184000	515203267.184000			
[mm] SIM focus pos	-0.782348	-0.7809083437167272			
[mm] SIM defocus	0	0.001439871863259334			
[mm] SIM translation stage pos	-254.359963	-254.3657361129205			
[mm] SIM translation stage offset	20.7675	20.77328310999084			
[s] Observation start time (MET)	514108461.184000	514106614.11219			
Observation start date	2014-04-17T07:53:14	2014-04-17T07:23:34			
[s] Observation end time (MET)	514123461.184000	514124438.35067			
Observation end date	2014-04-17T12:03:14	2014-04-17T12:20:38			
Read mode	TIMED	TIMED			

2.3 Aspect



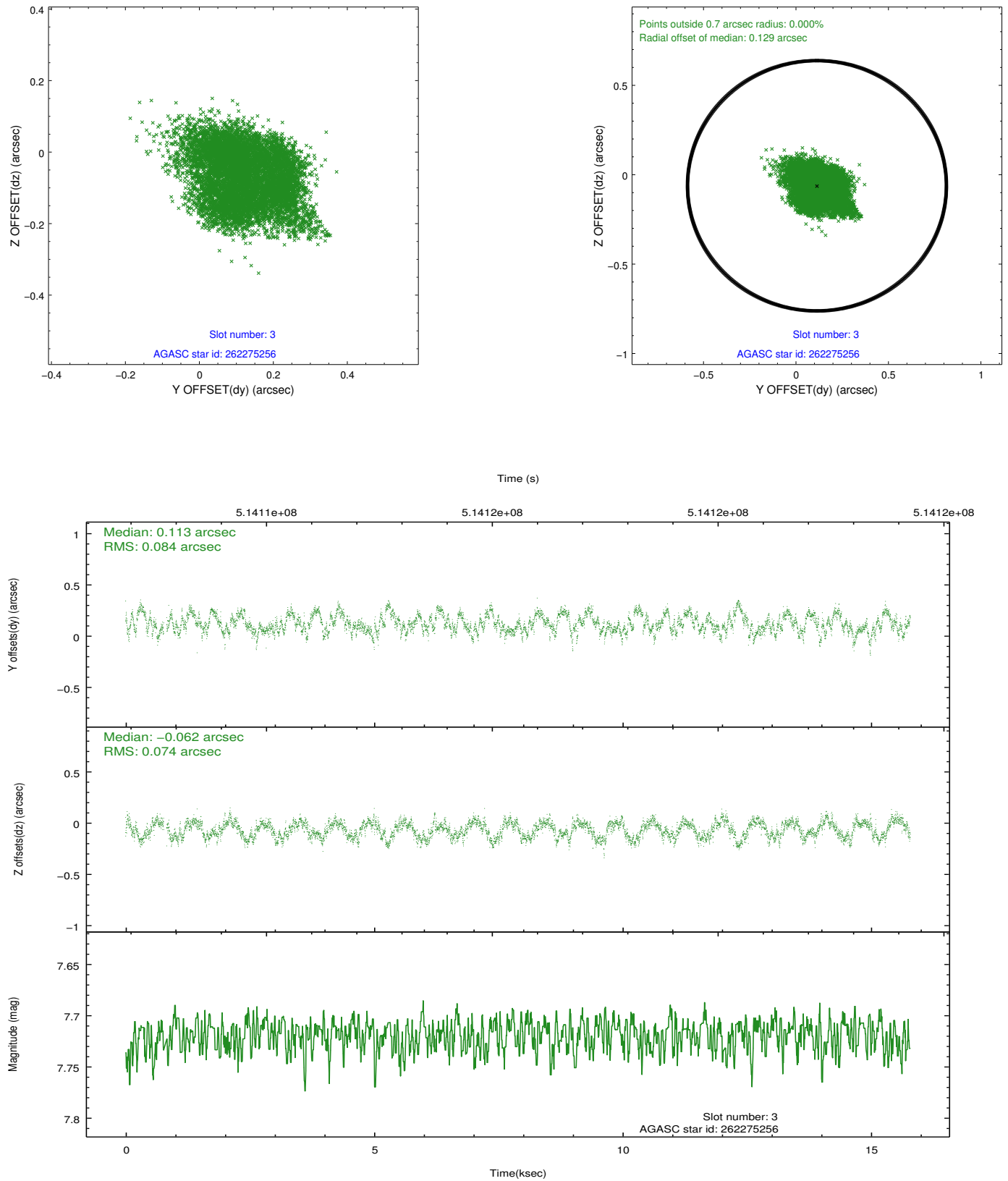


Slot Statistics

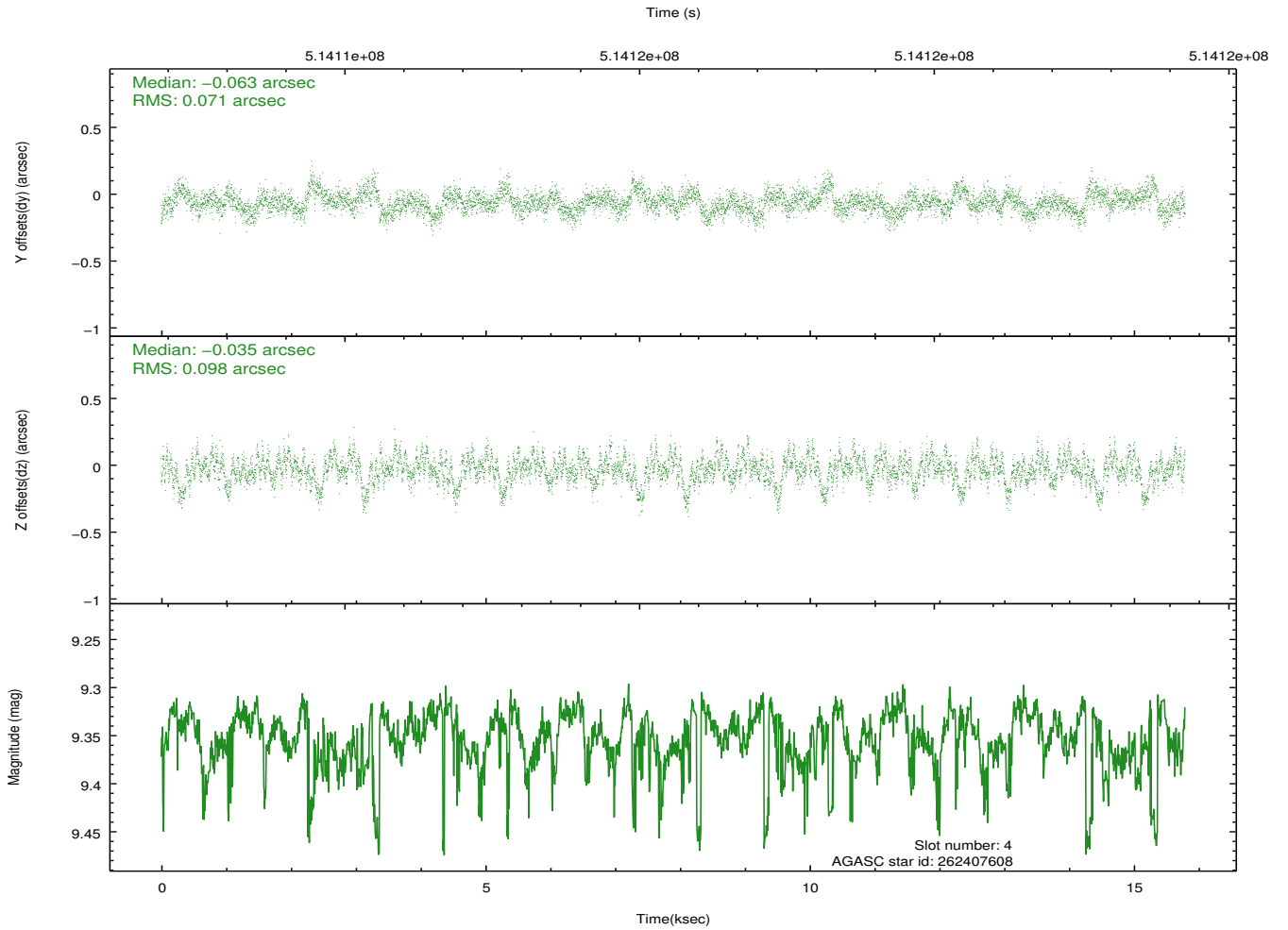
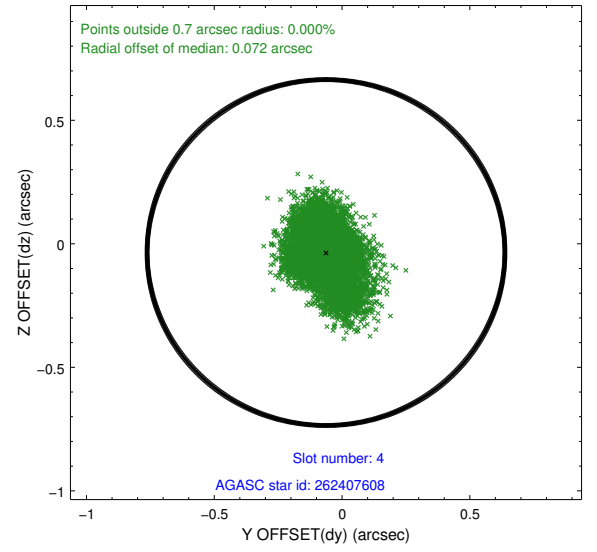
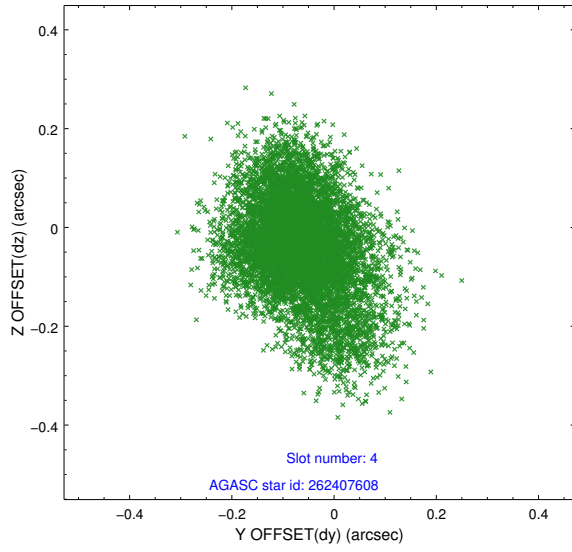
slot	status	used	id	mag	n_pts	med_dy	med_dz	dr1	dr2	ra	dec	mean_y	mean_z
0	FID		ACIS-I-1	7.14	3852	-0.070	0.192	0.010	0.020	0.000000	0.000000	919.91	-413.03
1	FID		ACIS-I-5	7.03	3853	-0.132	-0.010	0.010	0.017	0.000000	0.000000	-1828.28	1483.97
2	FID		ACIS-I-6	7.02	3853	0.110	-0.115	0.010	0.017	0.000000	0.000000	385.10	2128.86
3	GUIDE	used	262275256	7.72	7677	0.113	-0.062	0.120	0.185	206.467522	27.226414	2206.44	-2141.18
4	GUIDE	used	262407608	9.35	7699	-0.063	-0.035	0.127	0.219	207.378401	26.435507	-876.05	536.05
5	GUIDE	used	262408096	9.32	7700	-0.049	-0.167	0.199	0.330	207.011678	26.515421	320.86	318.14
6	GUIDE	used	262408512	7.97	7702	-0.017	0.154	0.071	0.113	207.800210	27.128796	-2075.03	-2038.37
7	GUIDE	used	262409552	8.18	7704	0.013	0.107	0.097	0.158	206.584269	27.192805	1826.48	-2040.14

2.4 Star Slots

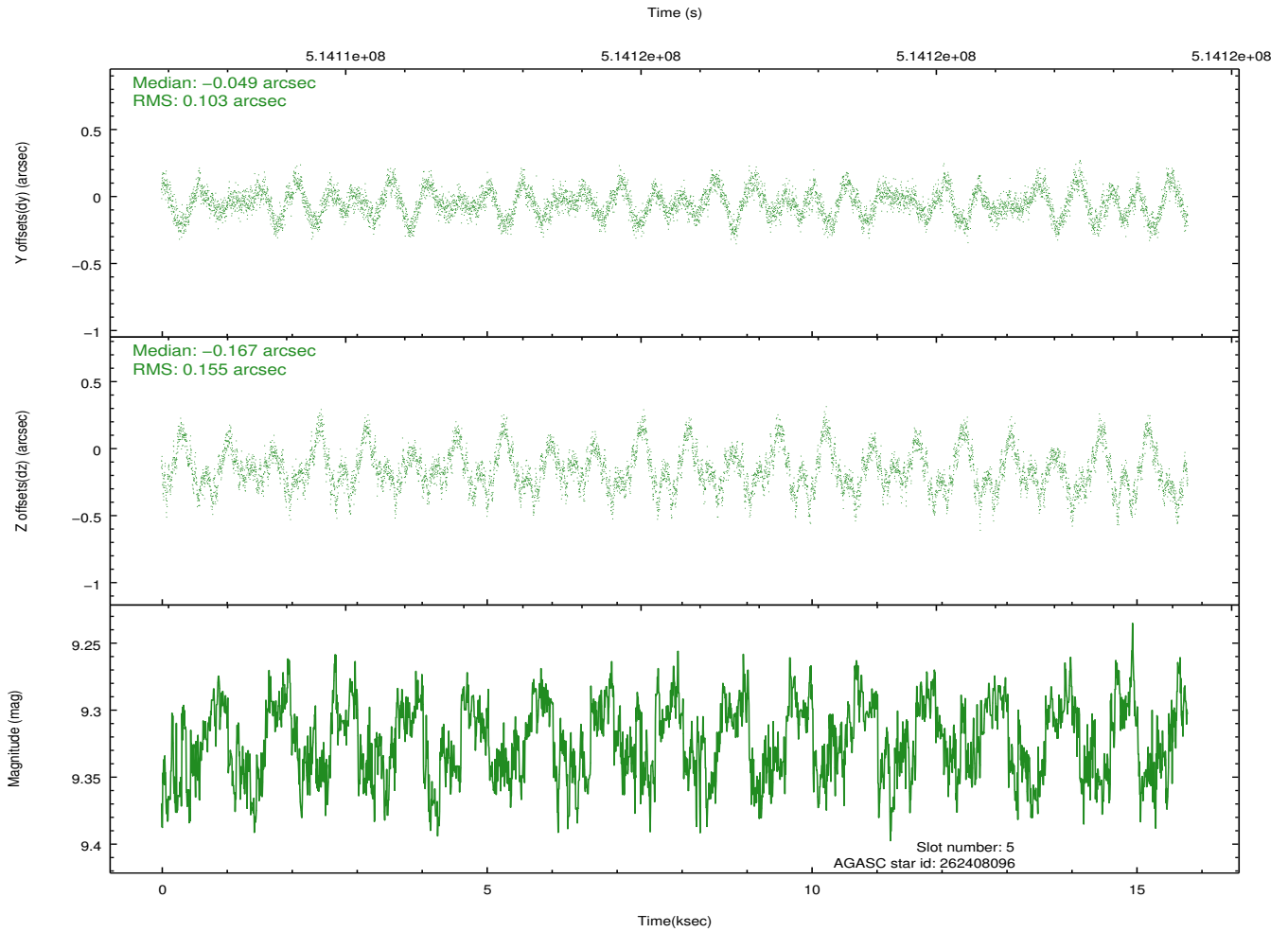
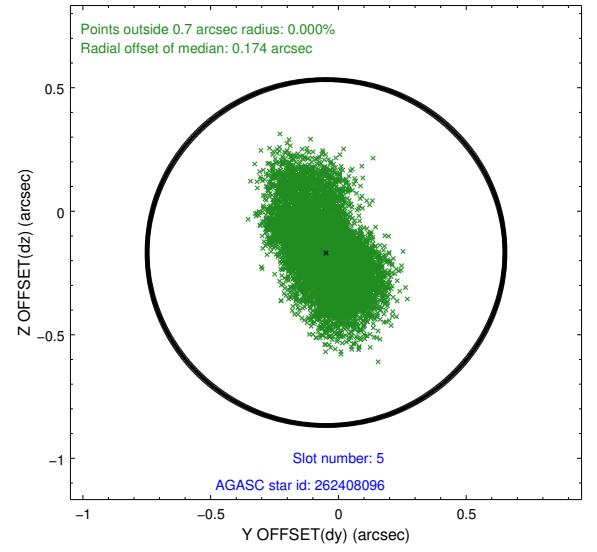
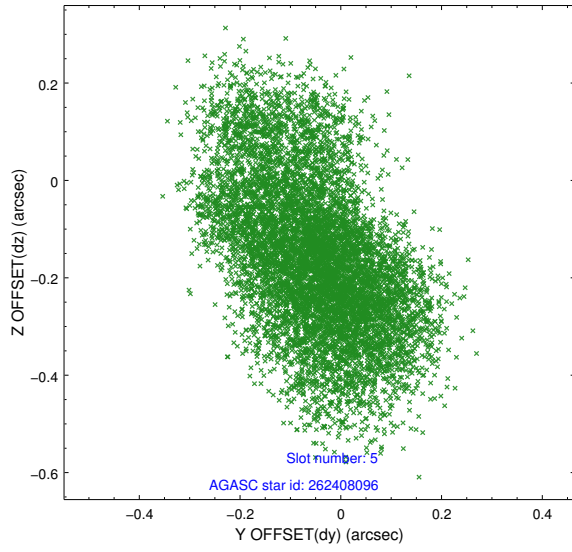
2.4.1 Slot 3



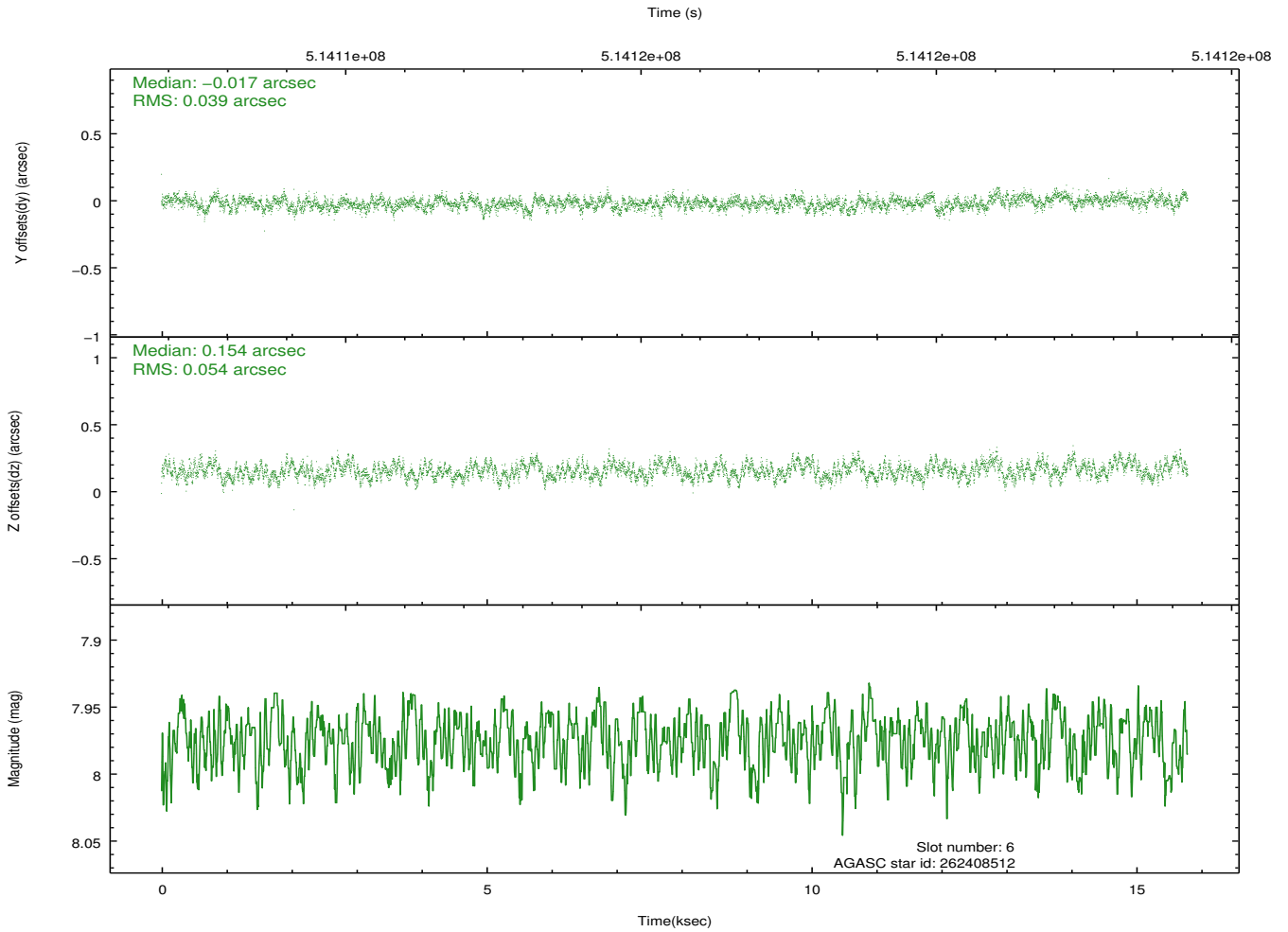
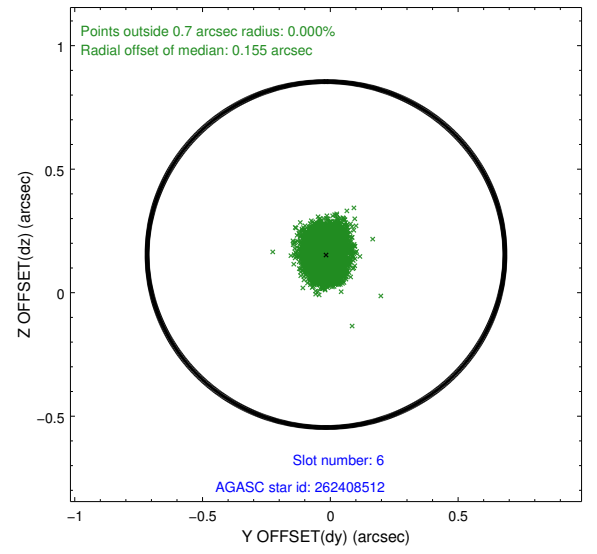
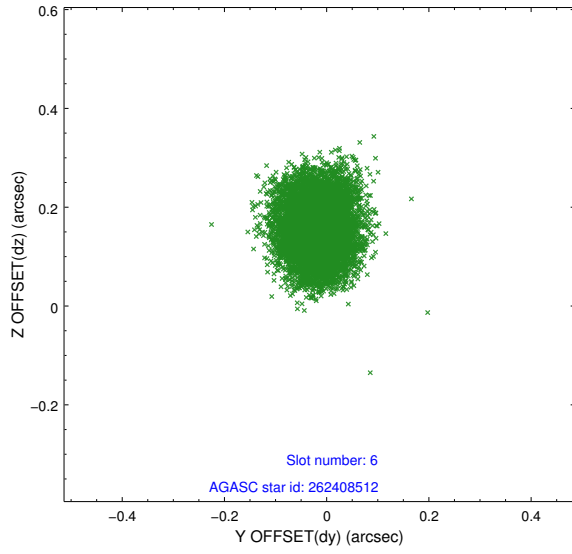
2.4.2 Slot 4



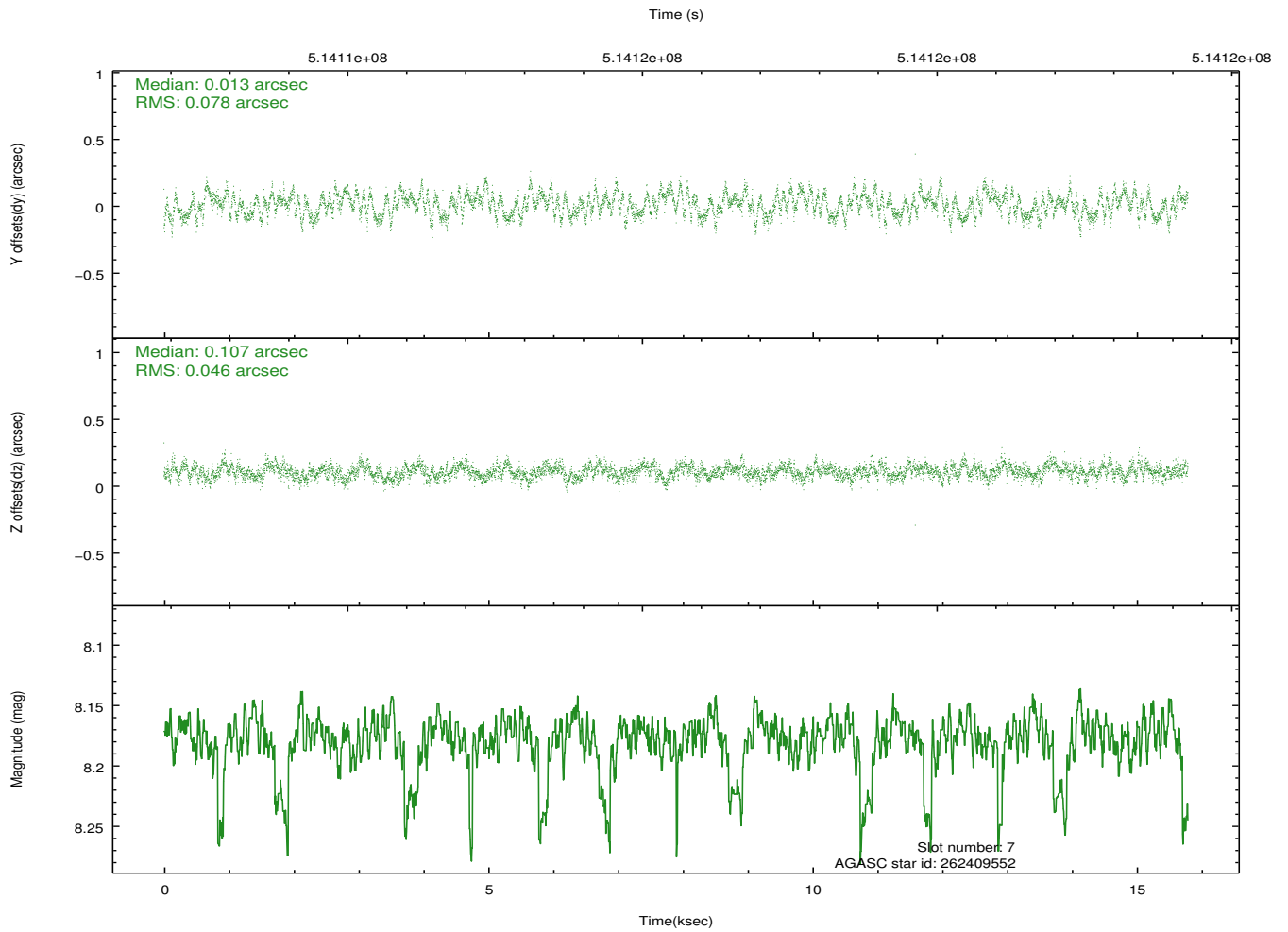
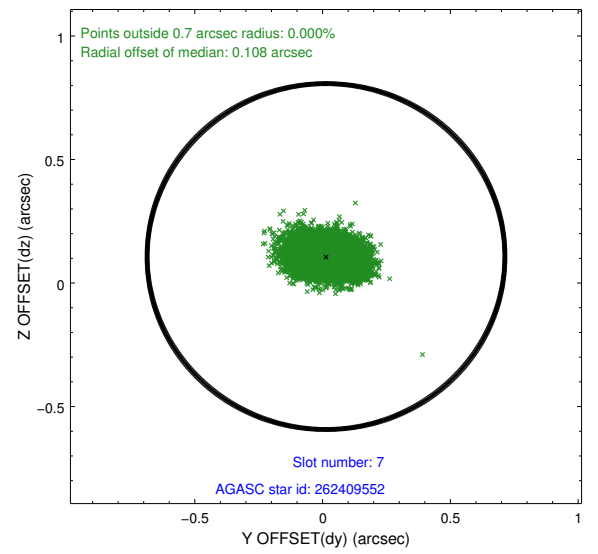
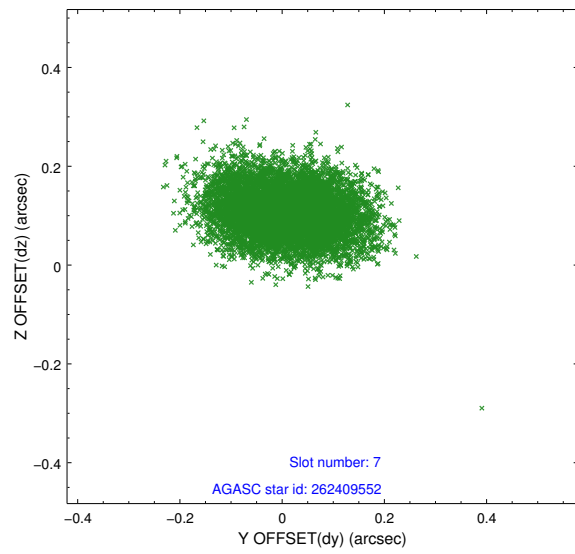
2.4.3 Slot 5



2.4.4 Slot 6

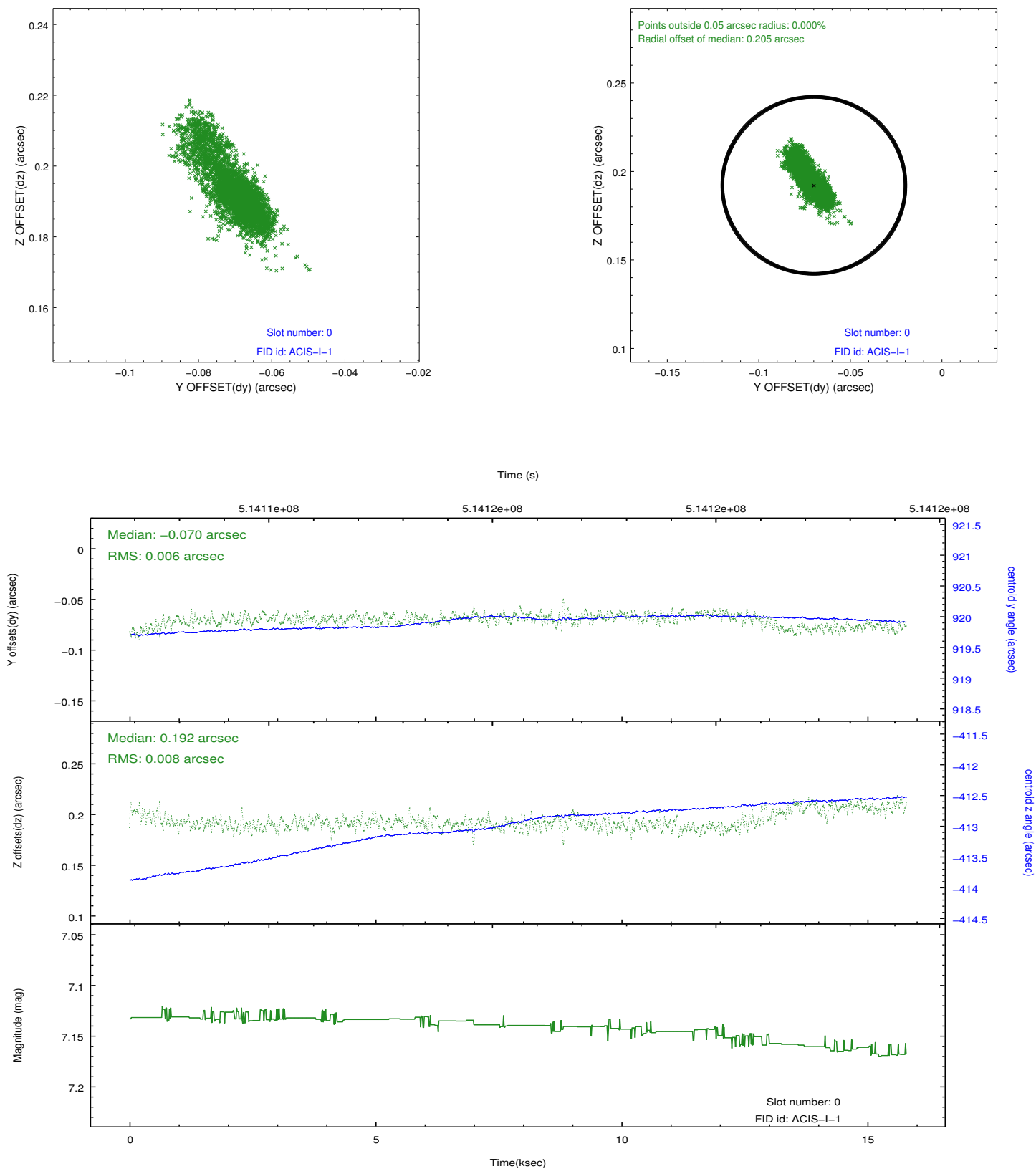


2.4.5 Slot 7

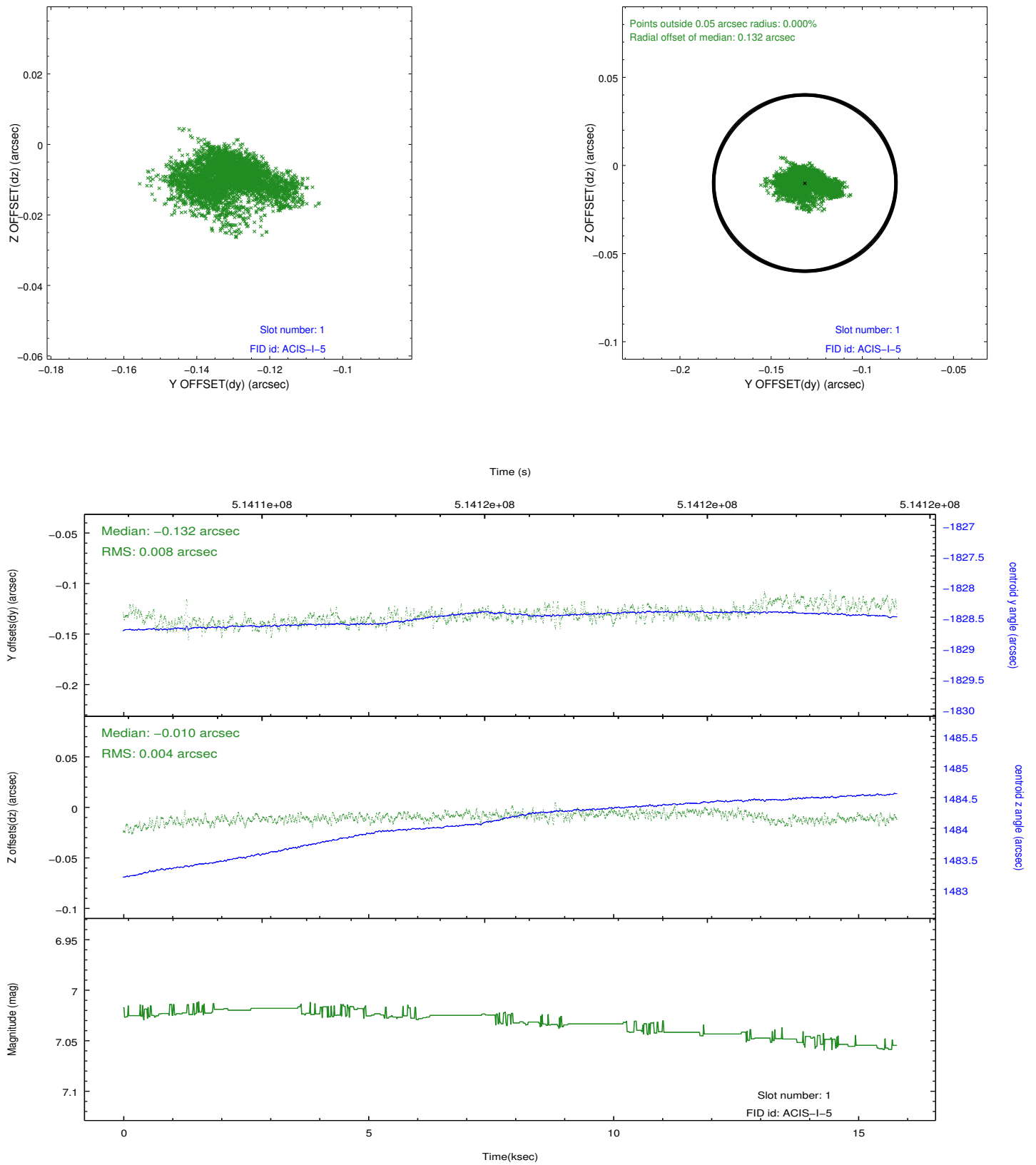


2.5 FID Slots

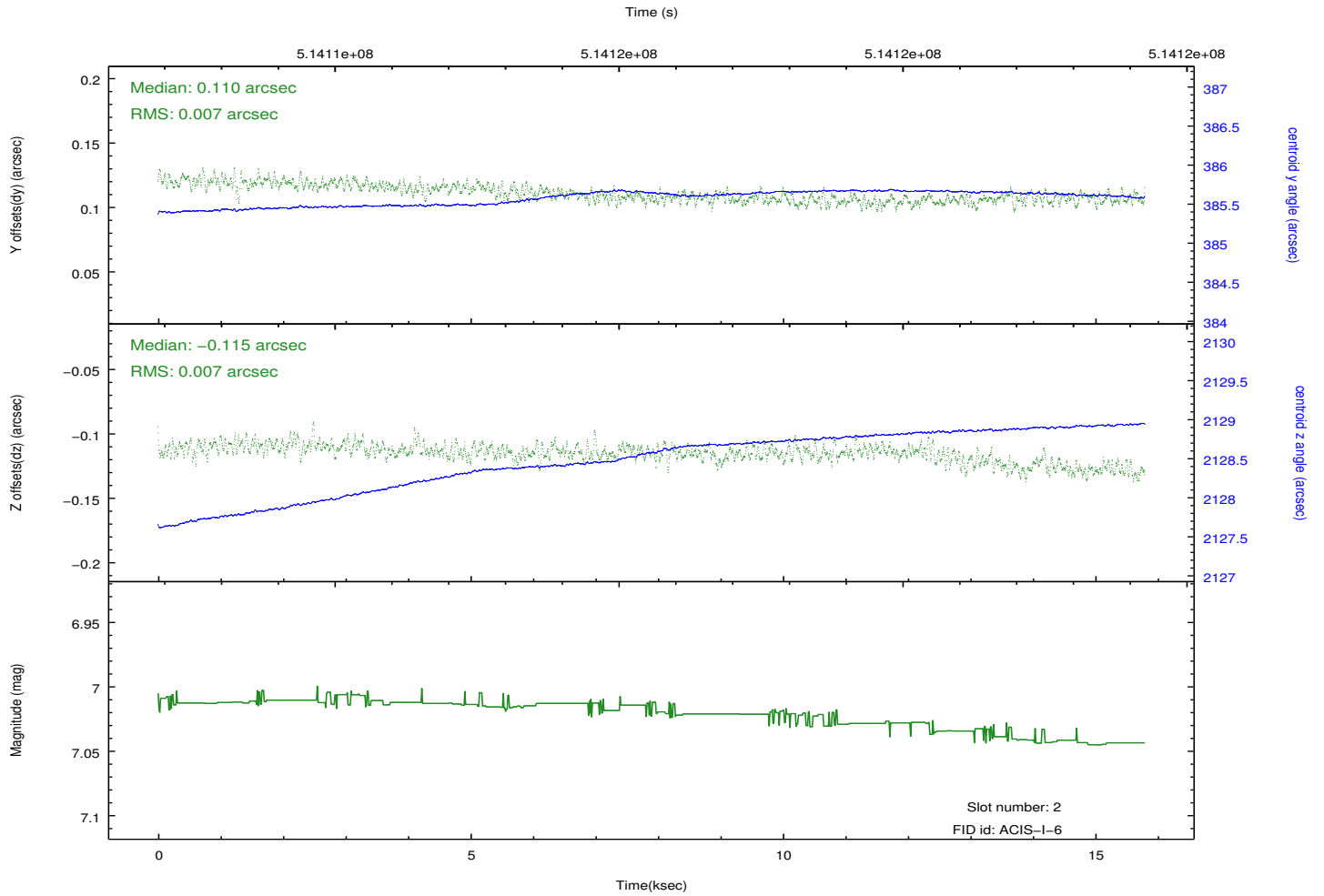
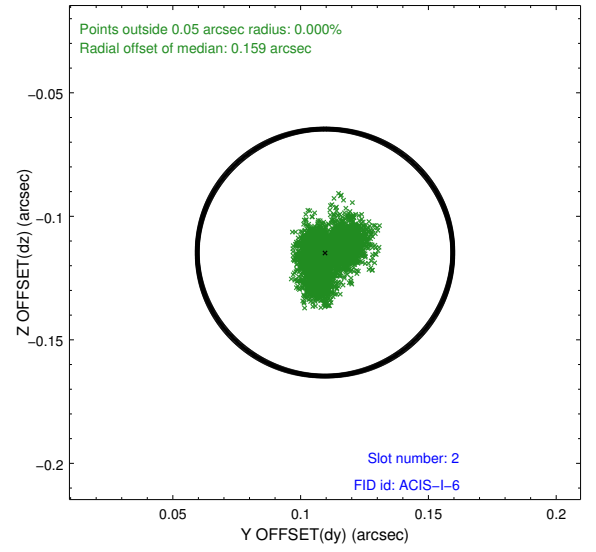
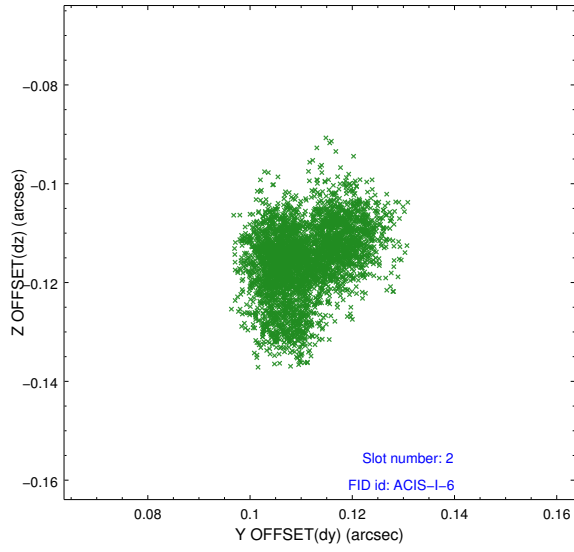
2.5.1 Slot 0



2.5.2 Slot 1



2.5.3 Slot 2



A Summary

A.1 Status

V&V Scientist	Beth Sundheim
V&V Date (YYYY-MM-DD)	2014.12.18
V&V Edition	1
V&V Disposition and Status	OK
V&V Charge Time	15.081459115684

A.2 Comments

Window preference met.

These data have been reprocessed with new aspect alignment calibration files that correct small mean offsets (up to 0.4 arcsecs) and improve overall astrometric accuracy. The new calibration was determined using data from the time period being reprocessed and was performed using cross-correlation of X-ray sources with radio and optical counterparts.