

V&V Reference Report

L2 ASCDS Version : 8.4.5

Observation 1642 - L2 Version 3
Chandra X-Ray Center

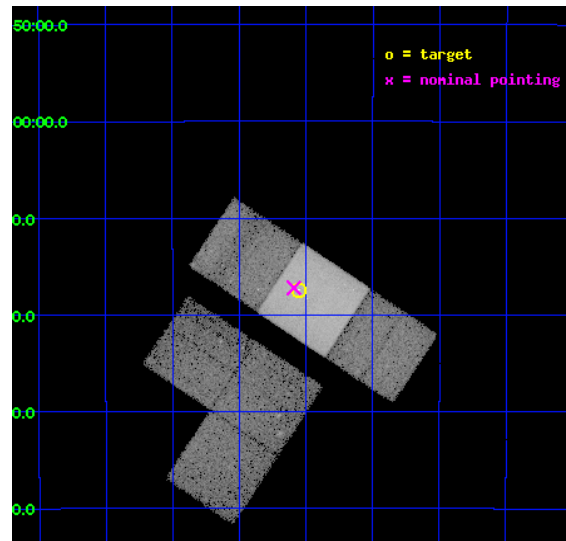
L2 Processing Date : Sep 2 2012

Contents

1	Front	2
2	OBI	3
2.1	OBI	3
2.1.1	Images	3
2.1.2	Bias	3
2.1.3	Parameters	4
2.1.4	Events	4
2.2	Compared Parameters	5
2.3	Aspect	6
2.4	Star Slots	9
2.4.1	Slot 3	9
2.4.2	Slot 4	10
2.4.3	Slot 5	11
2.4.4	Slot 6	12
2.4.5	Slot 7	13
2.5	FID Slots	14
2.5.1	Slot 0	14
2.5.2	Slot 1	15
2.5.3	Slot 2	16
A	Summary	17
A.1	Status	17
A.2	Comments	17

1 Front

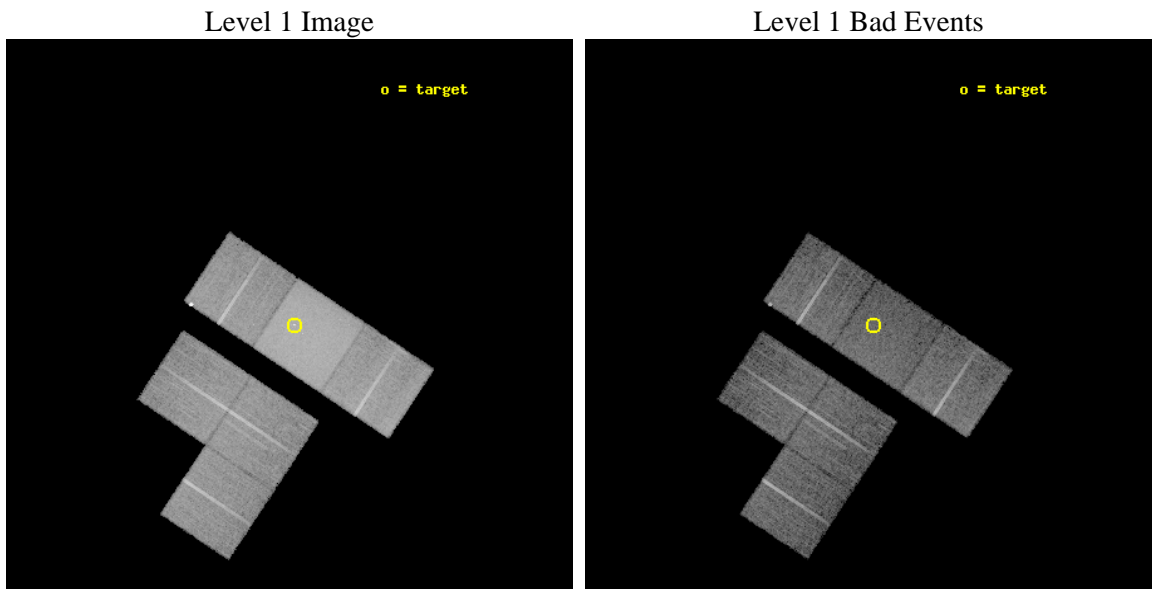
seq_num	700258	Sequence number
obs_id	1642	Observation id
title	CHANDRA OBSERVATIONS OF GRAVITATIONALLY LENSED QUASARS WITH INTRINSIC ABSORPTION	Proposal title
observer	Professor Gordon Garmire	Principal investigator
object	HE0230-2130	Source name
dtcycle	0	
cycle	P	events from which exps? Prim/Second/Both
ra_targ	38.137917	Observer's specified target RA [deg]
dec_targ	-21.290556	Observer's specified target Dec [deg]
ra_nom	38.147634473929	Nominal RA [deg]
dec_nom	-21.286704913082	Nominal Dec [deg]
roll_nom	33.56080040123	Nominal Roll [deg]
revision	3	Processing version of data
ontime	14950.400013909	Sum of GTIs [s]
livetime	14761.089046883	Livetime [s]
ontime1	14947.15904367	Sum of GTIs [s]
ontime2	14950.400013909	Sum of GTIs [s]
ontime3	14950.400013909	Sum of GTIs [s]
ontime6	14950.400013909	Sum of GTIs [s]
ontime7	14950.400013909	Sum of GTIs [s]
ontime8	14950.400013909	Sum of GTIs [s]
l2events	202930	Number of level 2 events



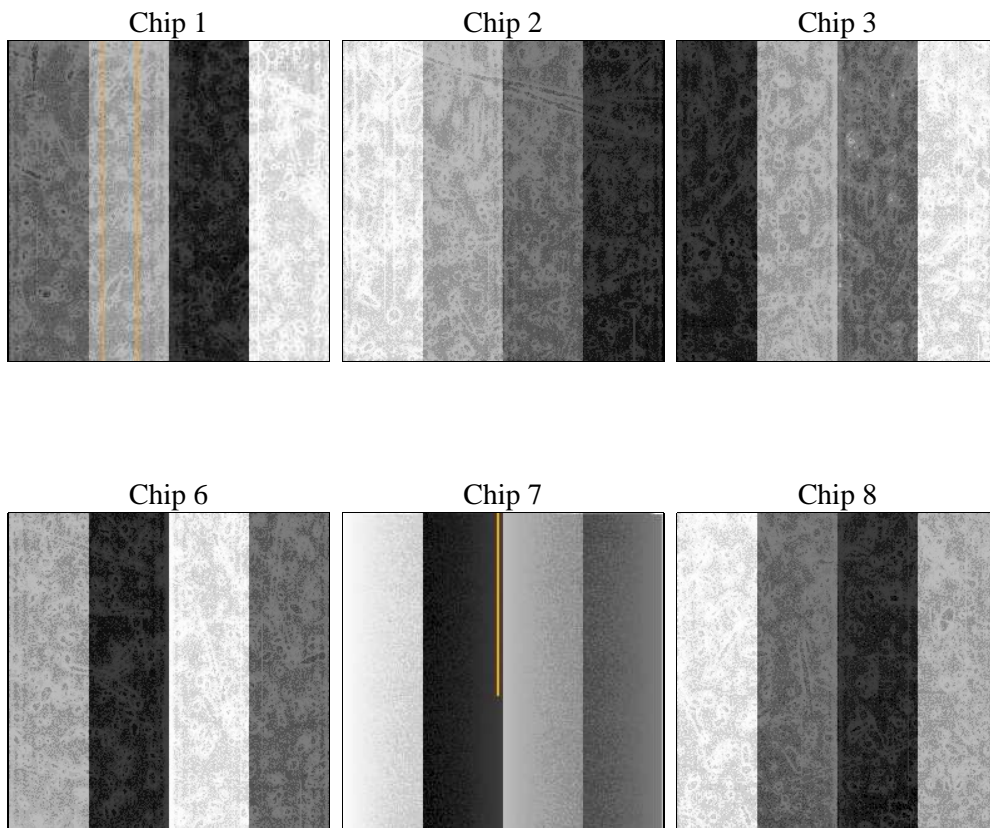
2 OBI

2.1 OBI

2.1.1 Images



2.1.2 Bias



2.1.3 Parameters

obi_num	0	Obi number	sched_exp_time	15000.000000	[s] Scheduled observation exposure time
ascdsver	8.4.5	Processing system revision	ontime	14950.400013909	Sum of GTIs [s]
caldsver	4.5.1.1	 	ontime1	14947.15904367	Sum of GTIs [s]
date	2012-09-02T09:44:43	Date and time of file creation	ontime2	14950.400013909	Sum of GTIs [s]
revision	3	Processing version of data	ontime3	14950.400013909	Sum of GTIs [s]
			ontime6	14950.400013909	Sum of GTIs [s]
			ontime7	14950.400013909	Sum of GTIs [s]
			ontime8	14950.400013909	Sum of GTIs [s]
			l1events	702318	Number of level 1 events

2.1.4 Events

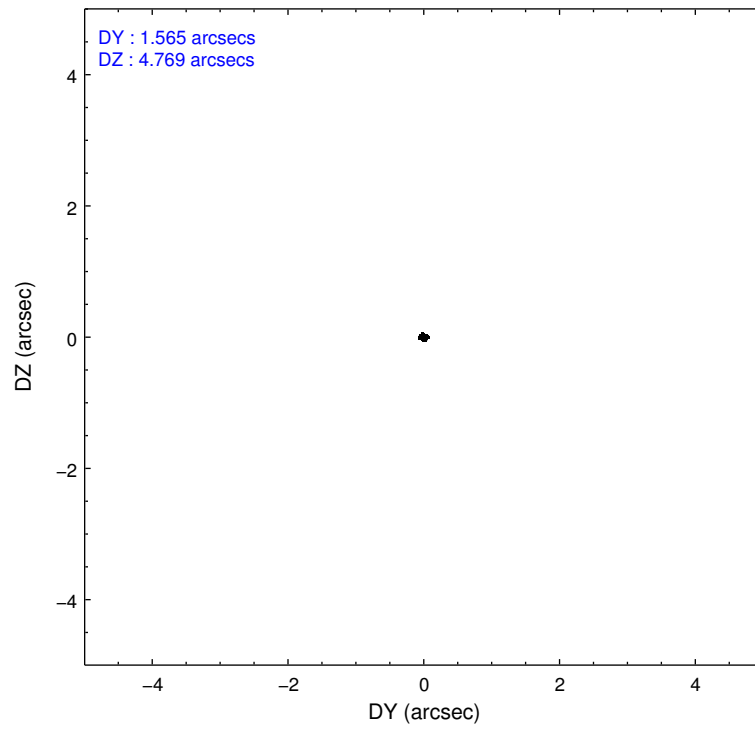
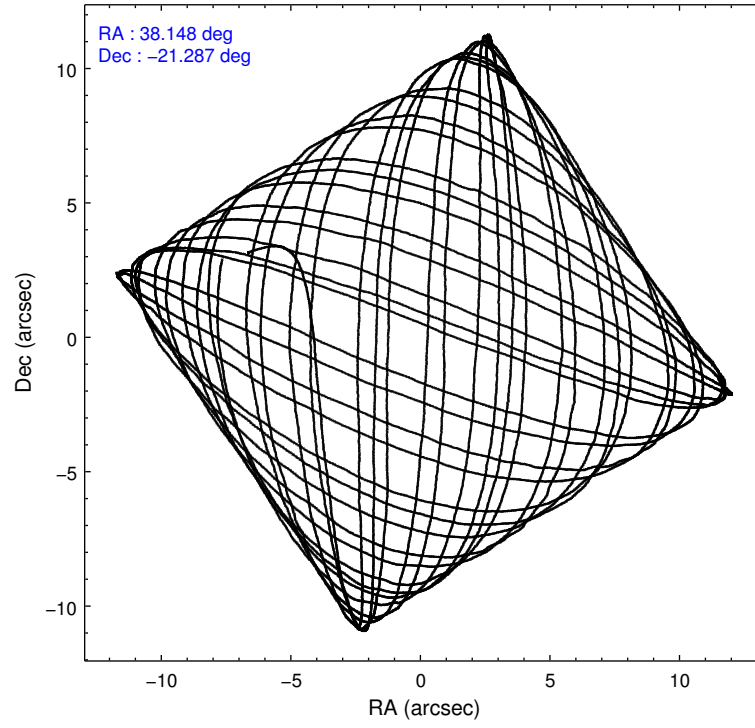
	ccd 1	ccd 2	ccd 3	ccd 6	ccd 7	ccd 8		ccd 1	ccd 2	ccd 3	ccd 6	ccd 7	ccd 8
level 1 events	89828	94012	93337	109166	191719	124256	grade 0 events	8772	8240	8723	13272	13737	15858
rejected events	73245	79038	77657	83727	68057	91489		9%	8%	9%	12%	7%	12%
rejected %	81%	84%	83%	76%	35%	73%	grade 1 events	54	53	37	112	93	76
								0%	0%	0%	0%	0%	0%
							grade 2 events	3292	3035	3111	7466	22370	6275
								3%	3%	3%	6%	11%	5%
							grade 3 events	1160	990	1011	1157	10011	2505
								1%	1%	1%	1%	5%	2%
							grade 4 events	1151	945	972	1257	9942	2365
								1%	1%	1%	1%	5%	1%
							grade 5 events	3451	2871	3352	4260	11388	4698
								3%	3%	3%	3%	5%	3%
							grade 6 events	2213	1770	1868	2293	67631	5809
								2%	1%	2%	2%	35%	4%
							grade 7 events	69735	76108	74263	79349	56547	86670
								77%	80%	79%	72%	29%	69%

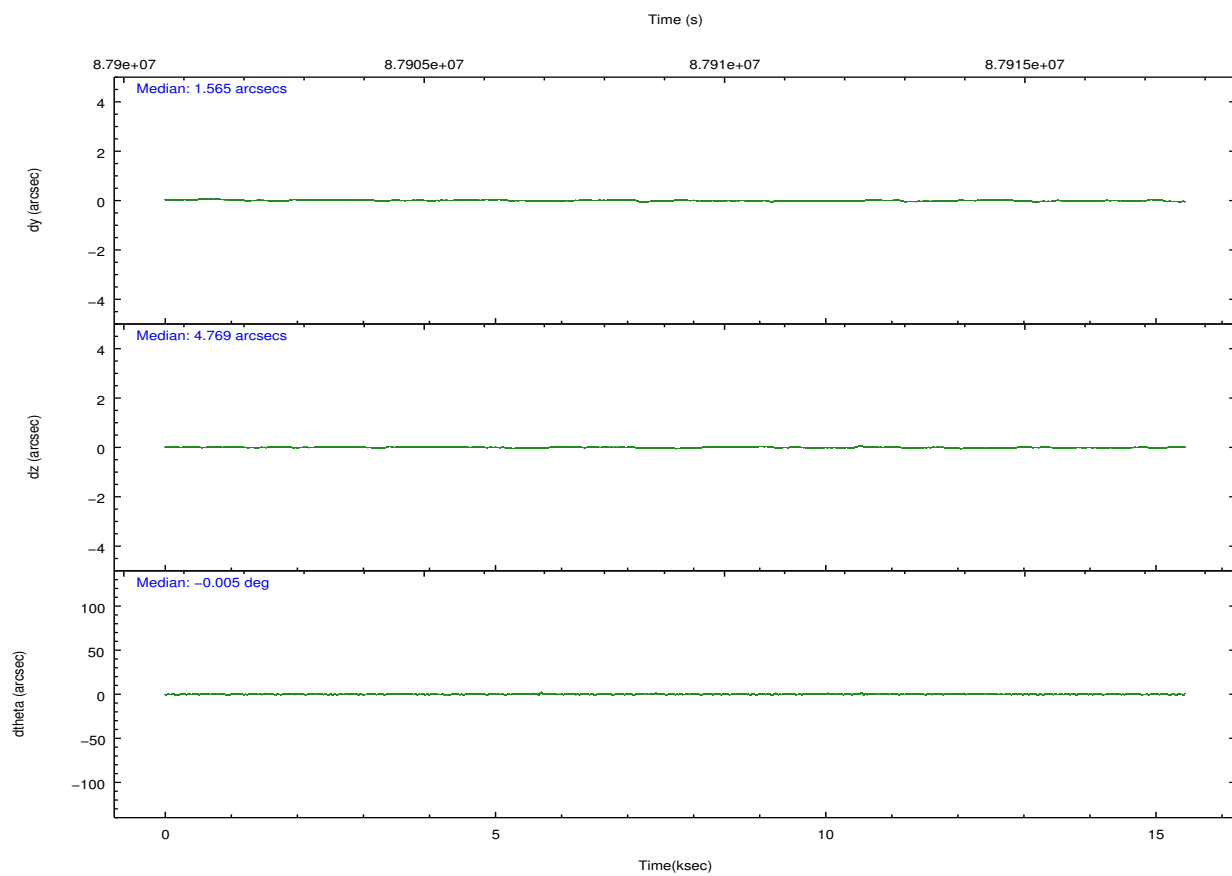
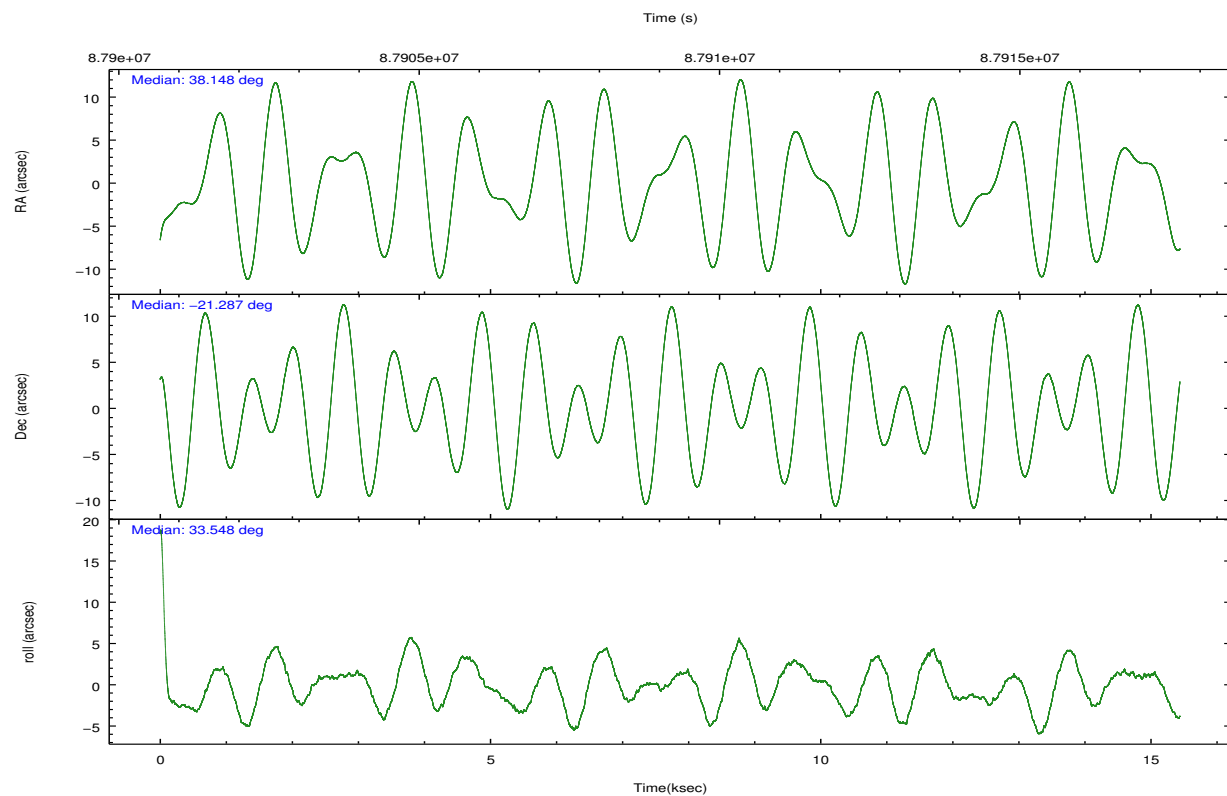
2.2 Compared Parameters

Parameter	Planned	Actual
Instrument	ACIS	ACIS
Detector	ACIS-123678	ACIS-123678
Grating	NONE	NONE
Data mode	FAINT	FAINT
Observation mode	POINTING	POINTING
[deg] Pointing RA	38.134776	38.14763447392924
[deg] Pointing Dec	-21.311257	-21.28670491308192
[deg] Pointing Roll	33.399485	33.56080040123038
[mm] SIM focus pos	-0.684267	-0.6828225247311905
[mm] SIM defocus	0	0.001444936568705701
[mm] SIM translation stage pos	-190.132523	-190.1400660498719
[mm] SIM translation stage offset	0	0.00754346686406393
[s] Observation start time (MET)	87901894.184000	87900810.65518001
Observation start date	2000-10-14T09:10:30	2000-10-14T08:53:30
[s] Observation end time (MET)	87916894.184000	87917789.780821
Observation end date	2000-10-14T13:20:30	2000-10-14T13:36:29
Read mode	TIMED	TIMED

Parameter	Planned	Actual
Obspar format version number	7	7
Obspar file type	PREDICTED	ACTUAL
Obspar update status	NONE	UPDATED
Number of optional ACIS chips dropped	0	0
On-chip summing requested	N	N
Subarray requested	NONE	NONE
Alternating exposures requested	N	N
[s] Primary exposure time	0.000000	3.2

2.3 Aspect



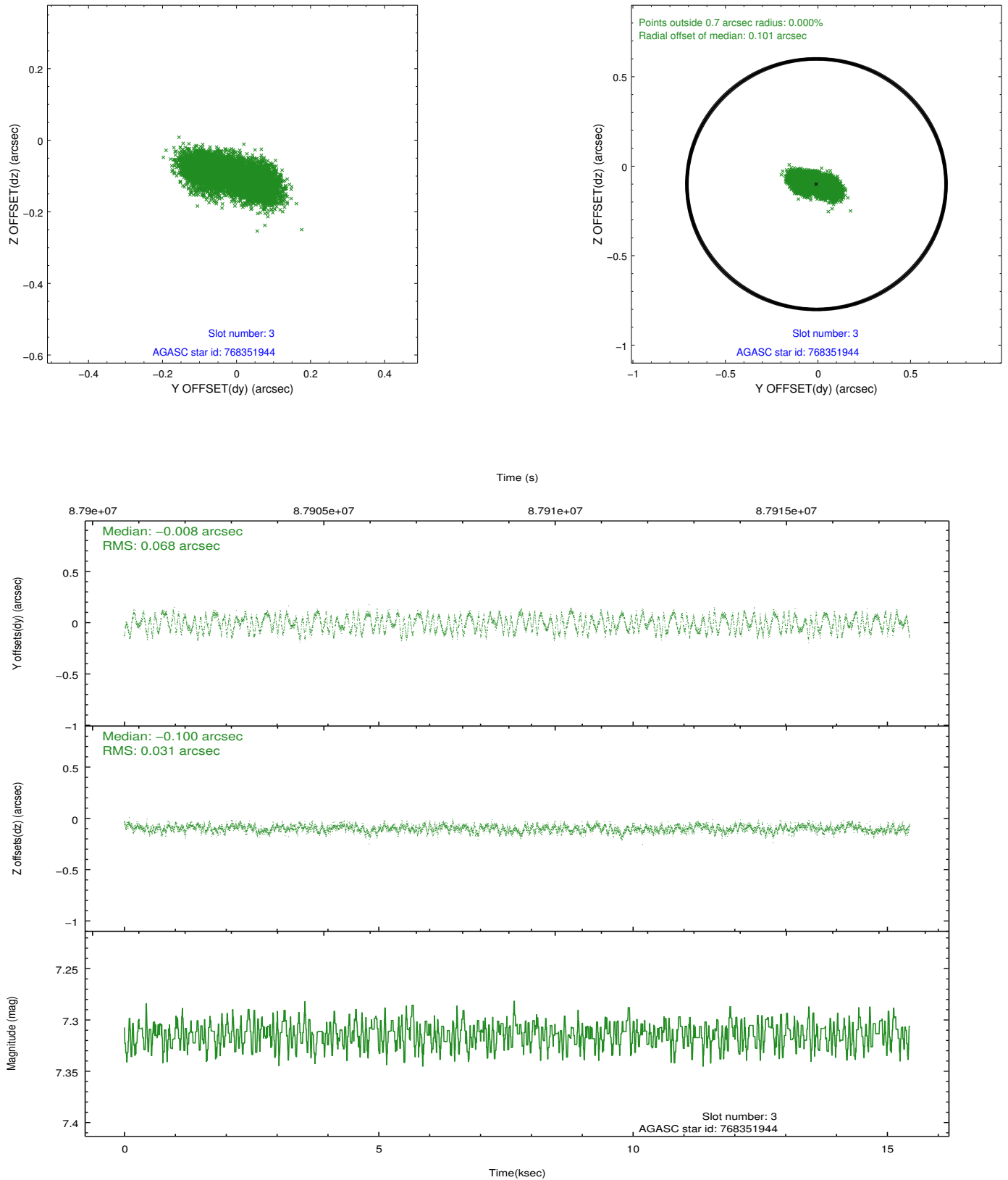


Slot Statistics

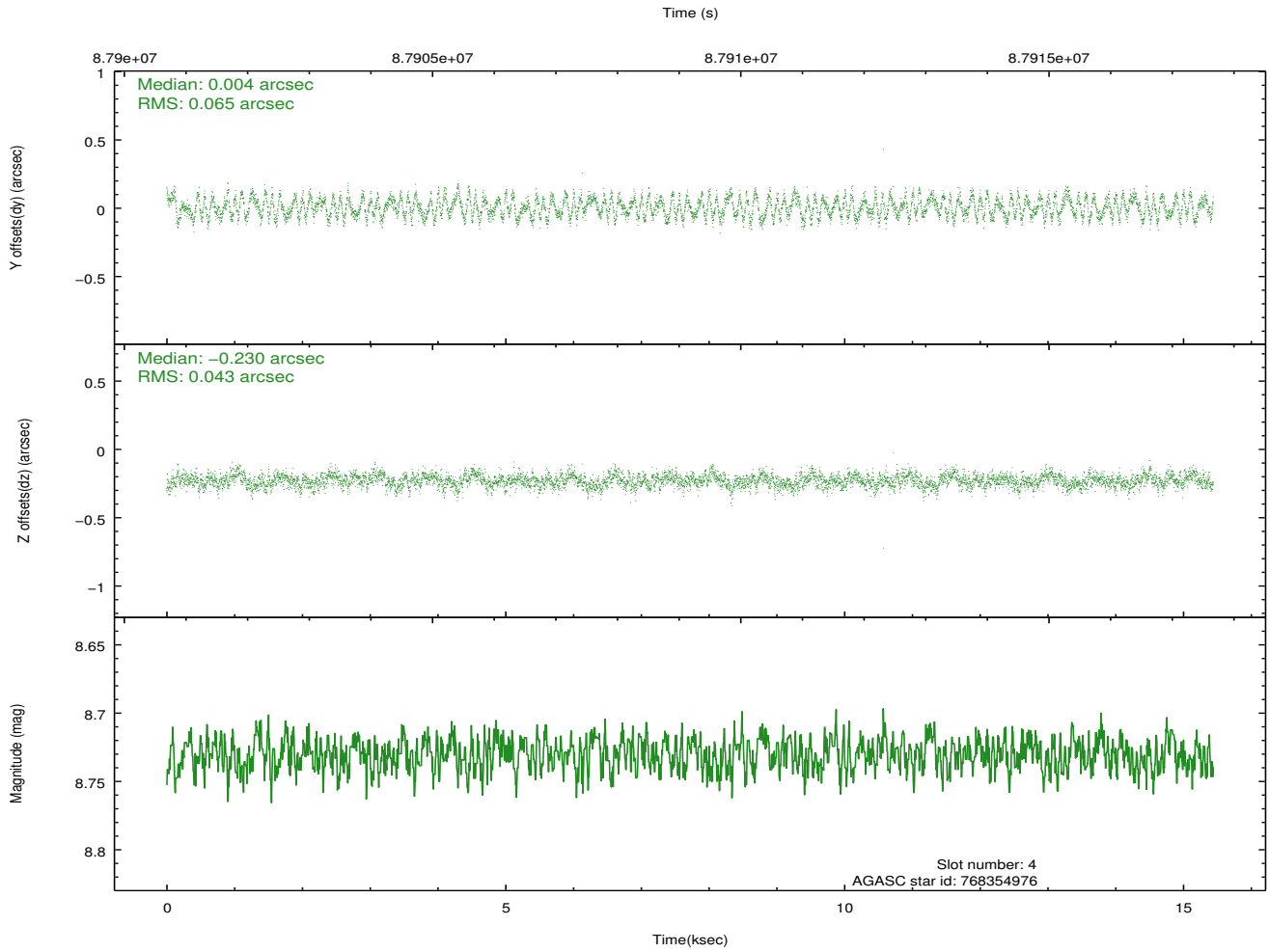
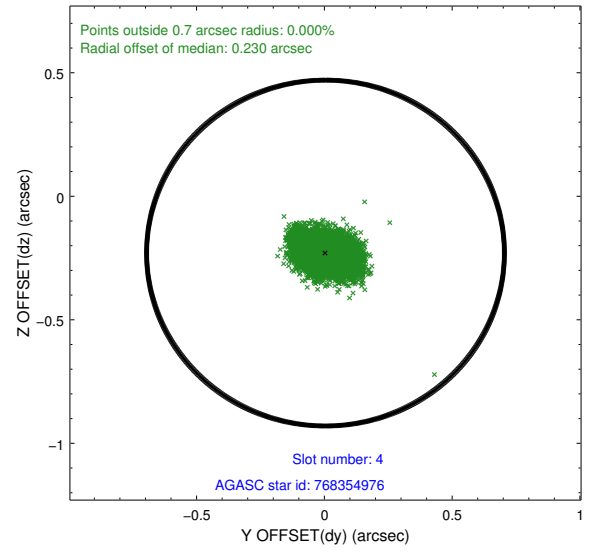
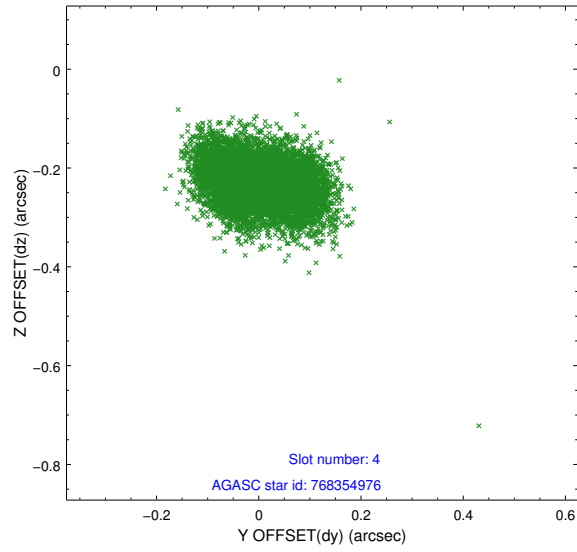
slot	status	id	mag	n_pts	med_dy	med_dz	dr1	dr2	ra	dec	mean_y	mean_z
0	FID	ACIS-S-2	7.11	3764	-0.041	-0.007	0.006	0.011	0.000000	0.000000	-754.19	-1725.89
1	FID	ACIS-S-4	7.21	3765	-0.010	0.022	0.005	0.010	0.000000	0.000000	2158.97	182.36
2	FID	ACIS-S-5	7.24	3766	0.019	-0.005	0.006	0.011	0.000000	0.000000	-1806.62	176.29
3	GUIDE	768351944	7.31	7531	-0.008	-0.100	0.083	0.126	37.329285	-21.037997	-1721.91	2304.89
4	GUIDE	768354976	8.73	7530	0.004	-0.230	0.085	0.131	37.513900	-20.888334	-907.99	2417.16
5	GUIDE	768355096	9.18	7529	-0.014	0.154	0.075	0.120	38.076127	-21.497720	-533.21	-451.93
6	GUIDE	768345224	9.79	7528	-0.013	0.115	0.092	0.151	37.901776	-22.074104	-2160.42	-1865.72
7	GUIDE	768347504	9.85	7527	0.033	0.062	0.100	0.164	38.056622	-21.778205	-1143.18	-1260.02

2.4 Star Slots

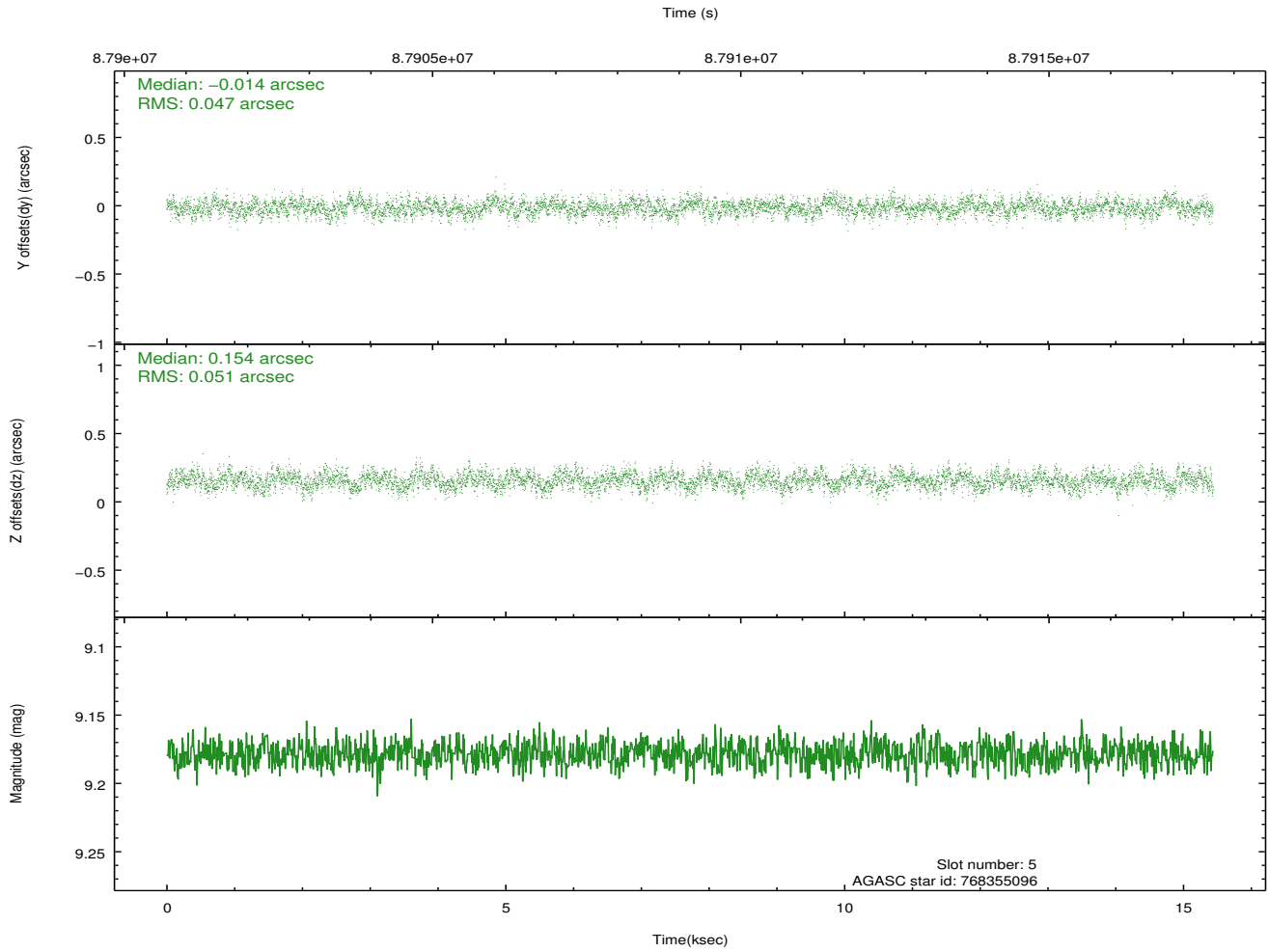
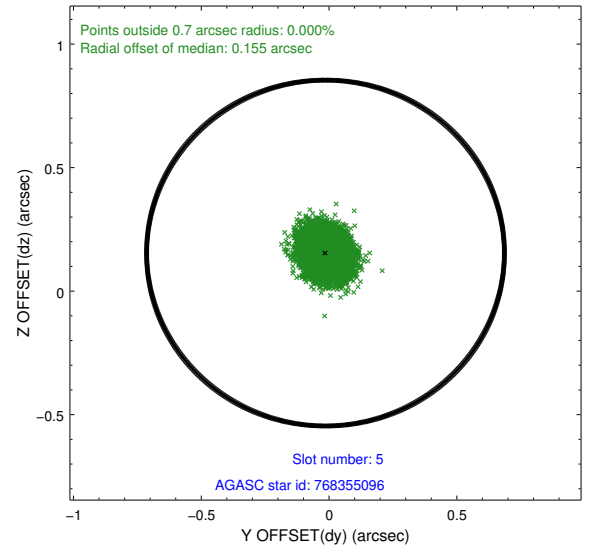
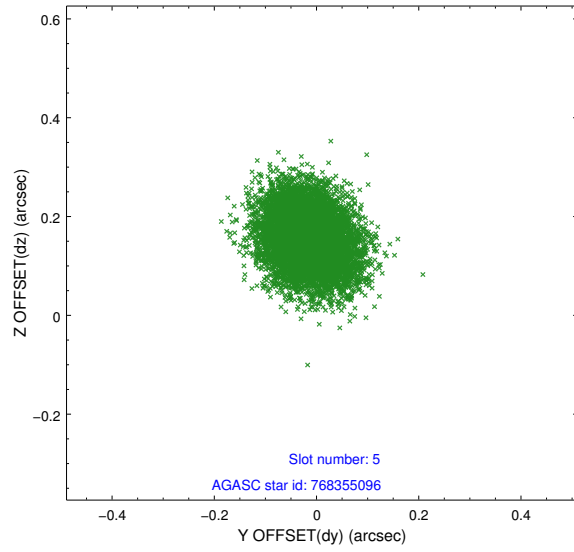
2.4.1 Slot 3



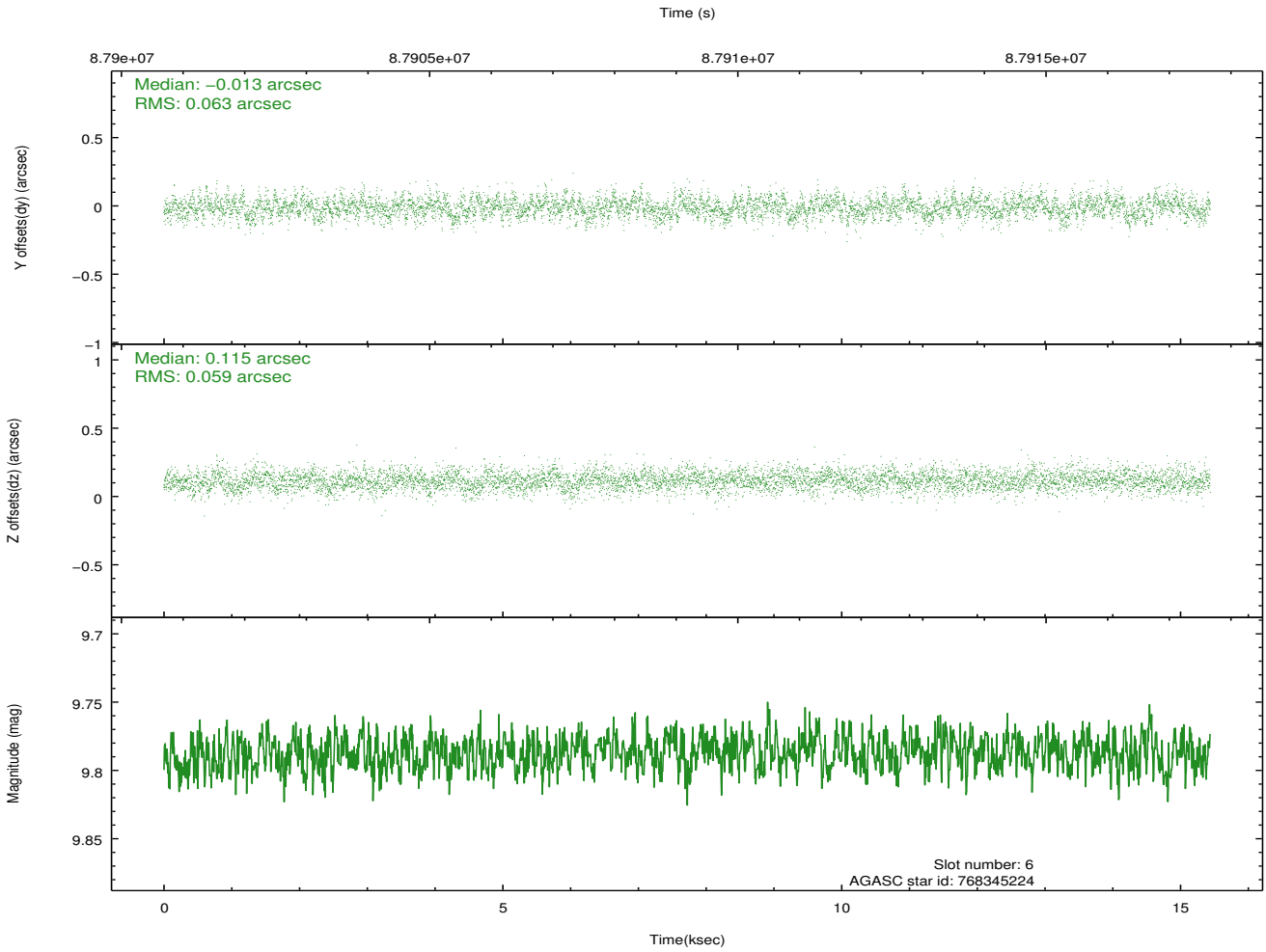
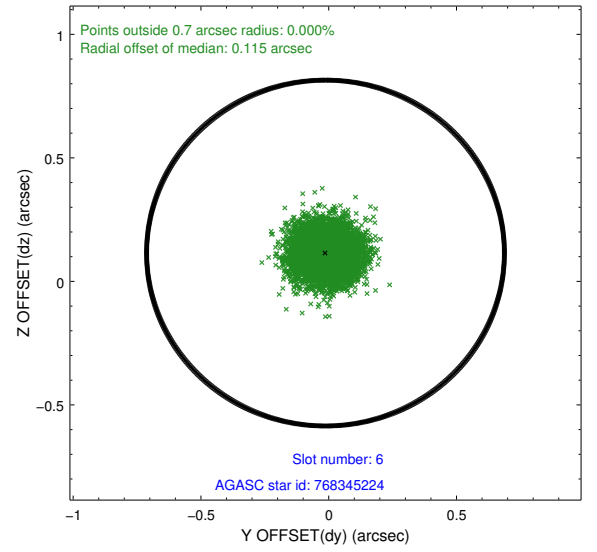
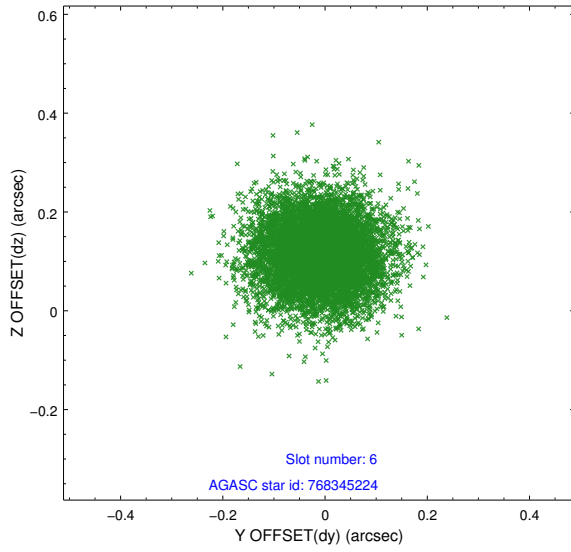
2.4.2 Slot 4



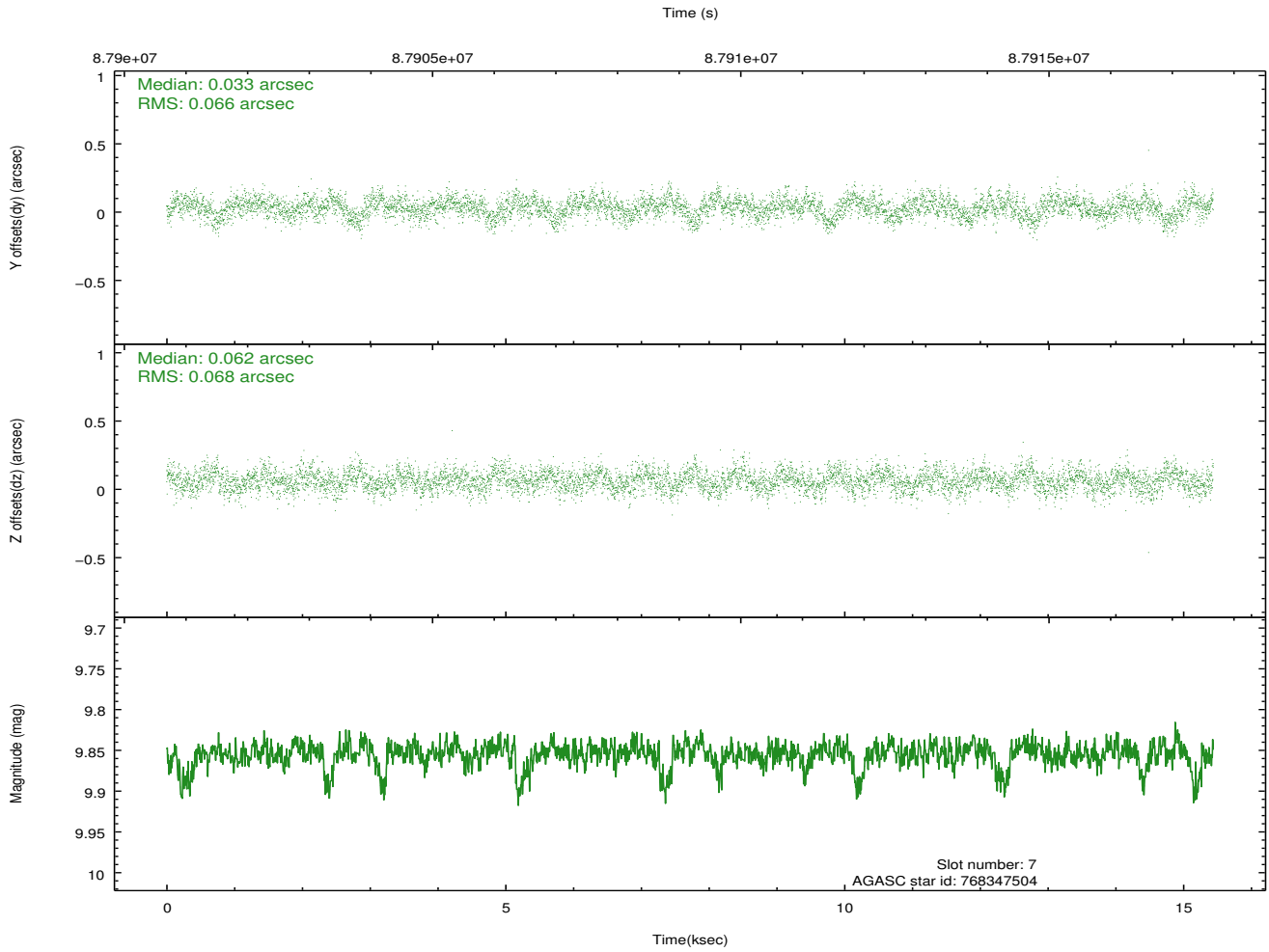
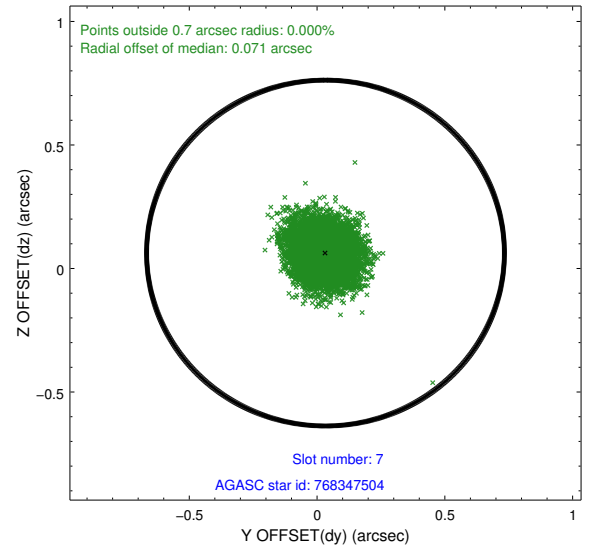
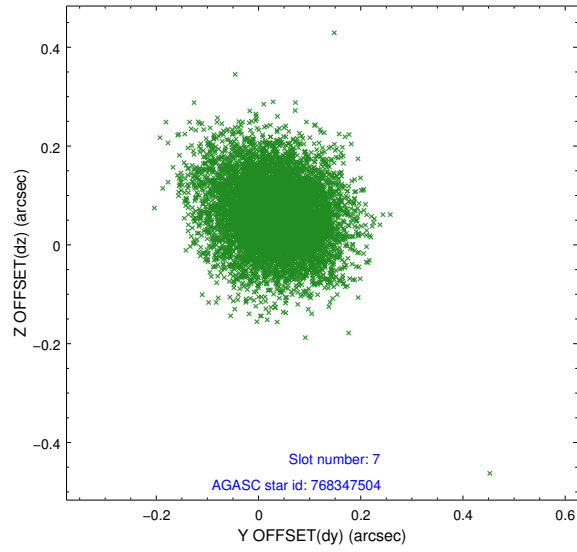
2.4.3 Slot 5



2.4.4 Slot 6

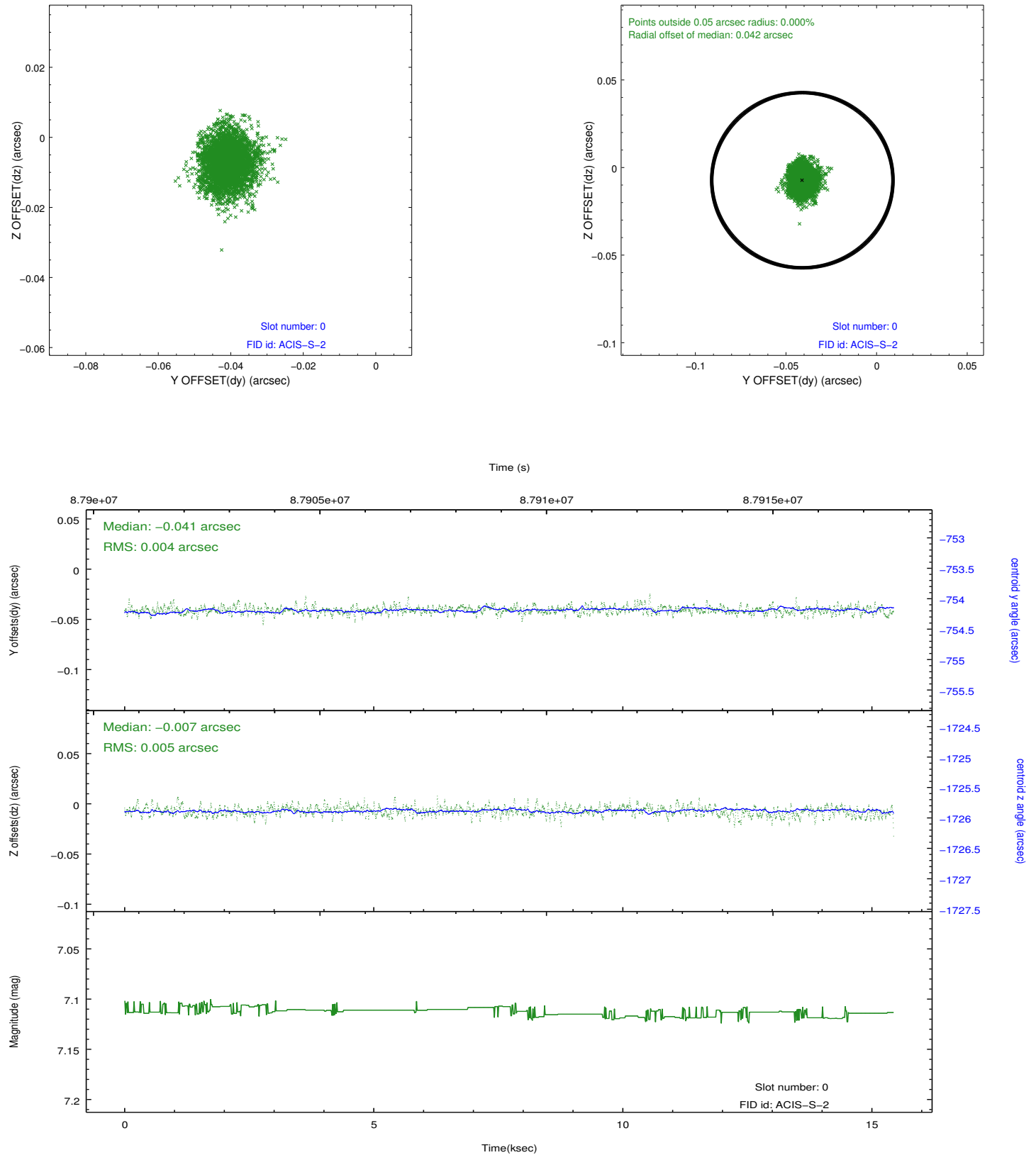


2.4.5 Slot 7

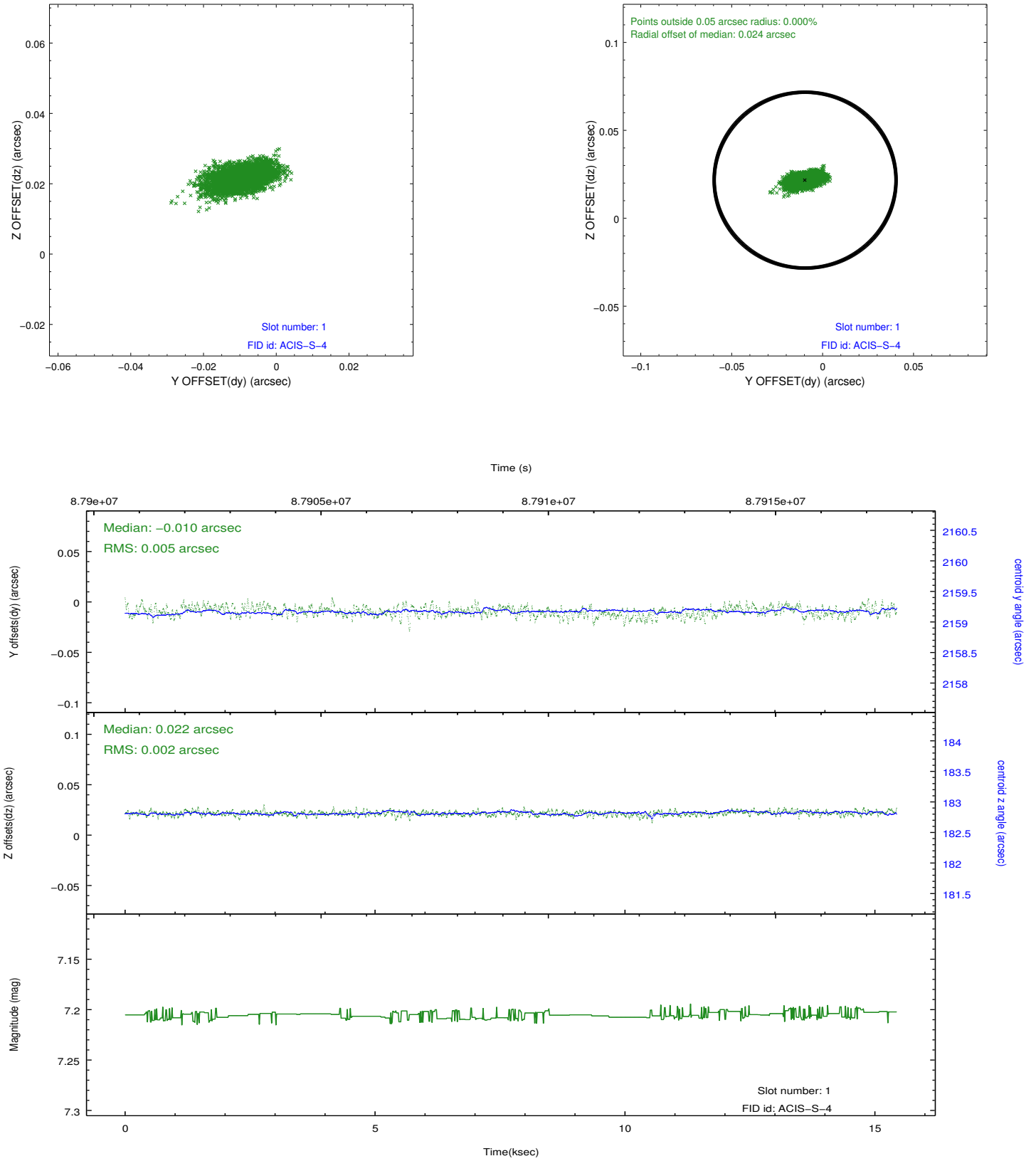


2.5 FID Slots

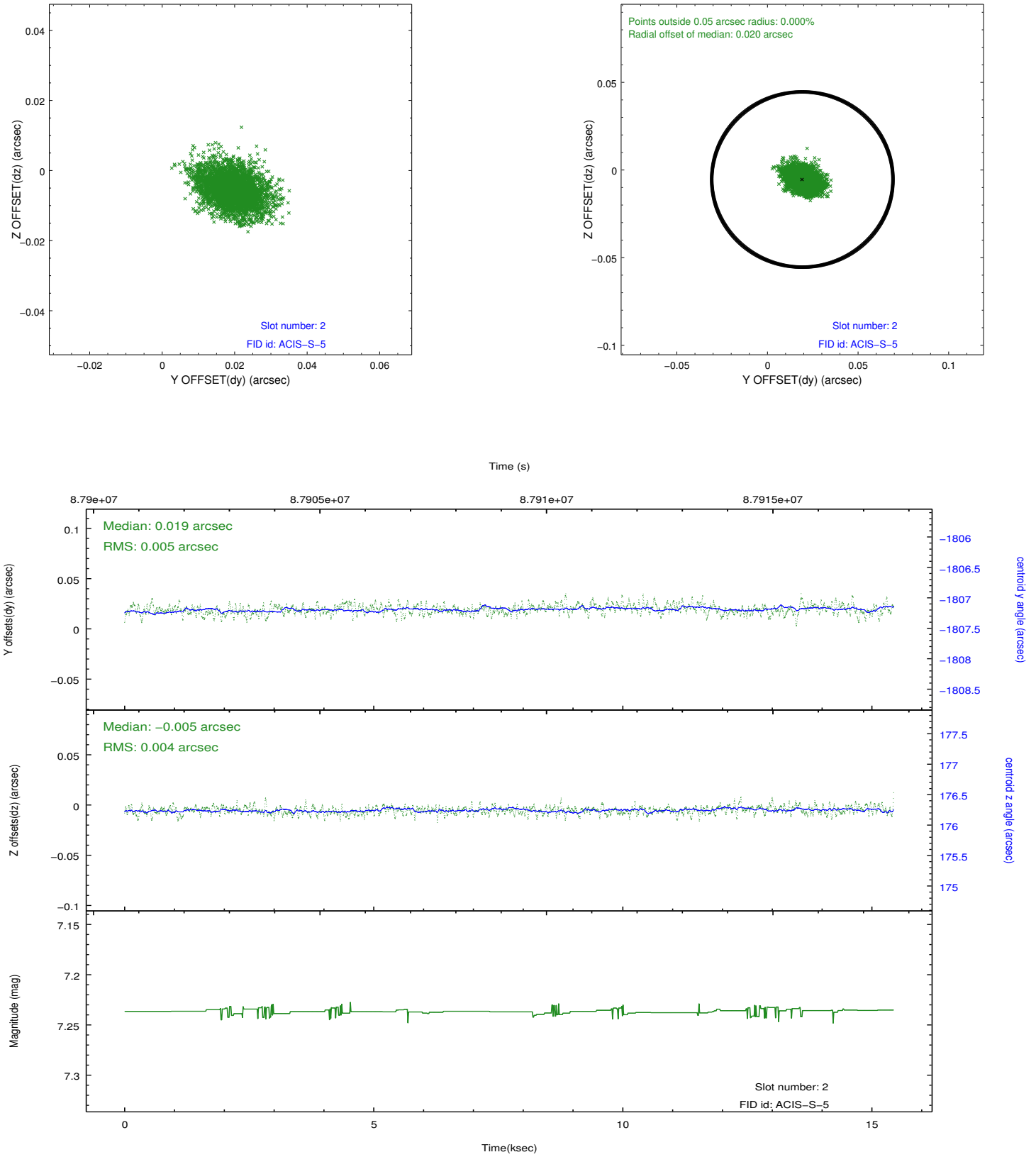
2.5.1 Slot 0



2.5.2 Slot 1



2.5.3 Slot 2



A Summary

A.1 Status

V&V Scientist	Jen Lauer
V&V Date (YYYY-MM-DD)	2012.09.10
V&V Edition	1
V&V Disposition and Status	OK
V&V Charge Time	14.953

A.2 Comments

Spike in count rate from about 10 counts per second to about 40 counts per second between 1 and 2 ksec and 10 and 12 ksec into the observation.