

V&V Reference Report

L2 ASCDS Version : 10.2.2

Observation 15872 - L2 Version 2
Chandra X-Ray Center

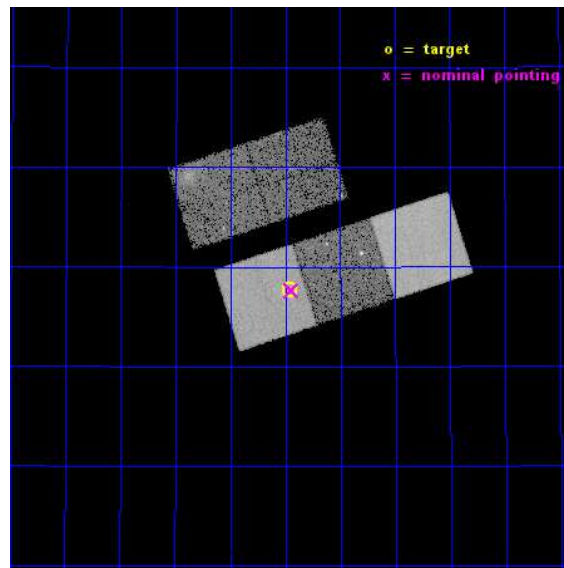
L2 Processing Date : Dec 11 2014

Contents

1	Front	2
2	OBI	3
2.1	OBI	3
2.1.1	Images	3
2.1.2	Bias	3
2.1.3	Parameters	4
2.1.4	Events	4
2.2	Compared Parameters	5
2.3	Aspect	6
2.4	Star Slots	9
2.4.1	Slot 3	9
2.4.2	Slot 4	10
2.4.3	Slot 5	11
2.4.4	Slot 6	12
2.4.5	Slot 7	13
2.5	FID Slots	14
2.5.1	Slot 0	14
2.5.2	Slot 1	15
2.5.3	Slot 2	16
A	Summary	17
A.1	Status	17
A.2	Comments	17

1 Front

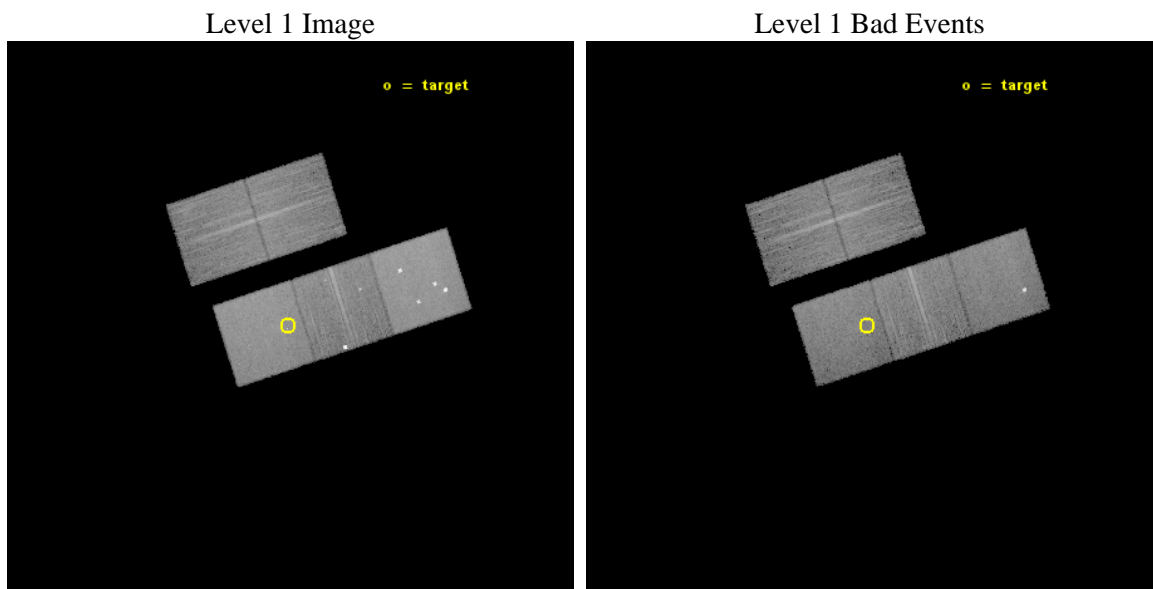
seq_num	502105	Sequence number
obs_id	15872	Observation id
title	Identification of the Host Galaxy of Swift Short GRBs by the Chandra Sub-arcsecond Position	Proposal title
observer	Takanori Sakamoto	Principal investigator
object	Short GRB ToO	Source name
dtcycle	0	
cycle	P	events from which exps? Prim/Second/Both
ra_targ	252.989292	Observer's specified target RA [deg]
dec_targ	39.962833	Observer's specified target Dec [deg]
ra_nom	252.98625777465	Nominal RA [deg]
dec_nom	39.960888657919	Nominal Dec [deg]
roll_nom	162.14169464473	Nominal Roll [deg]
revision	2	Processing version of data
ontime	20066.300154328	Sum of GTIs [s]
livetime	19804.119170217	Livetime [s]
ontime2	20063.159123957	Sum of GTIs [s]
ontime3	20066.300154328	Sum of GTIs [s]
ontime5	20066.300154328	Sum of GTIs [s]
ontime6	20066.300154328	Sum of GTIs [s]
ontime7	20066.300154328	Sum of GTIs [s]
l2events	162524	Number of level 2 events



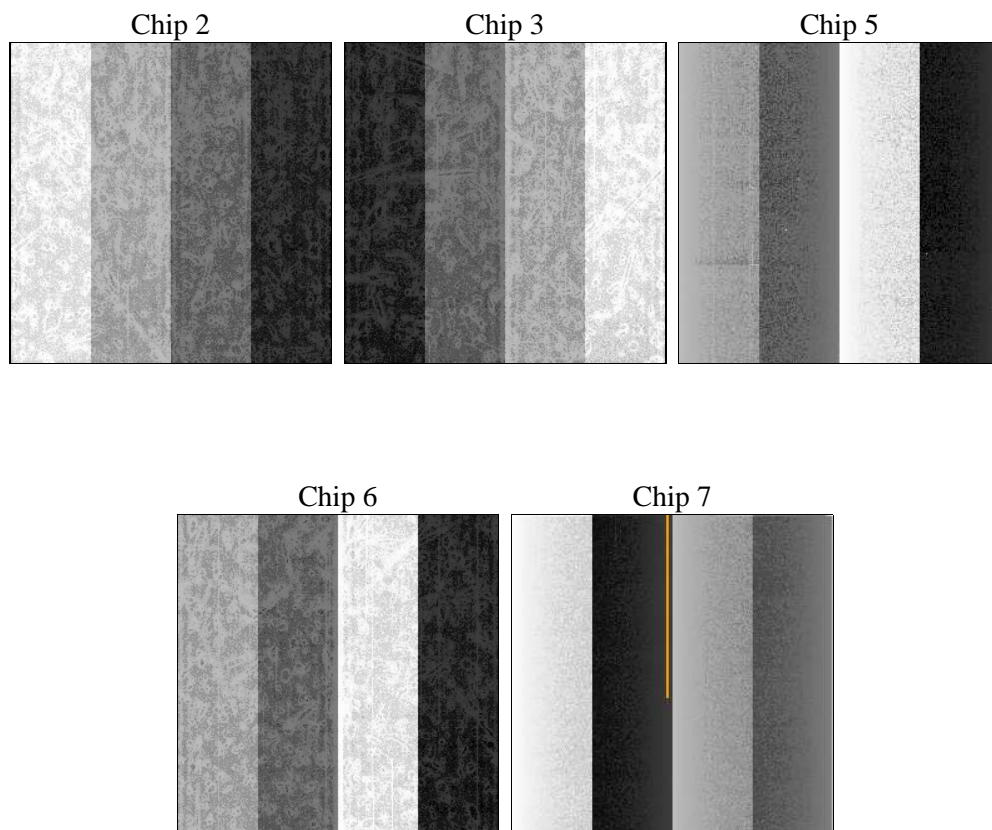
2 OBI

2.1 OBI

2.1.1 Images



2.1.2 Bias



2.1.3 Parameters

obi_num	0	Obi number	sched_exp_time	20000.000000	[s] Scheduled observation exposure time
ascdsver	10.3.1	Processing system revision	ontime	20066.300154328	Sum of GTIs [s]
caldbver	4.6.4	 	ontime2	20063.159123957	Sum of GTIs [s]
date	2014-12-11T20:48:54	Date and time of file creation	ontime3	20066.300154328	Sum of GTIs [s]
revision	2	Processing version of data	ontime5	20066.300154328	Sum of GTIs [s]
			ontime6	20066.300154328	Sum of GTIs [s]
			ontime7	20066.300154328	Sum of GTIs [s]
			l1events	613161	Number of level 1 events

2.1.4 Events

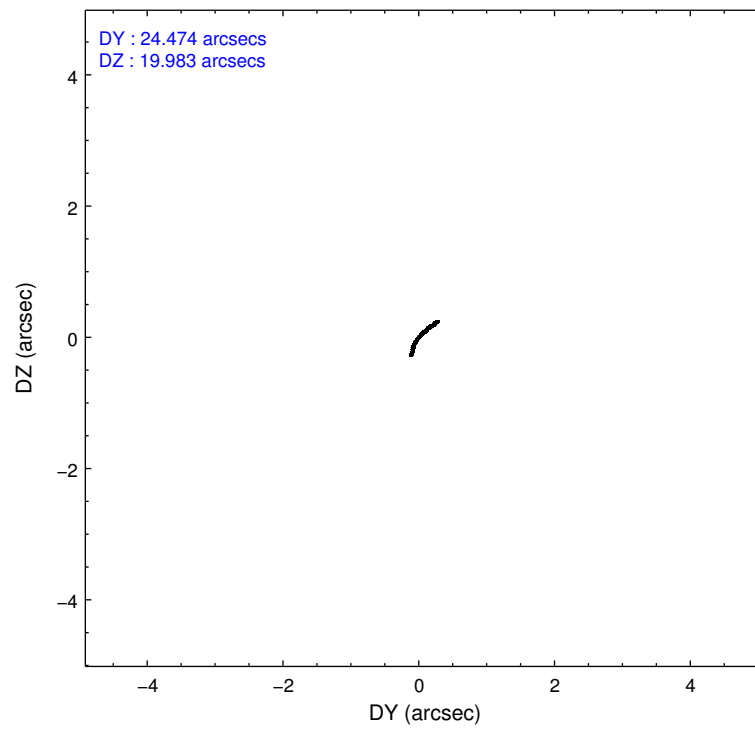
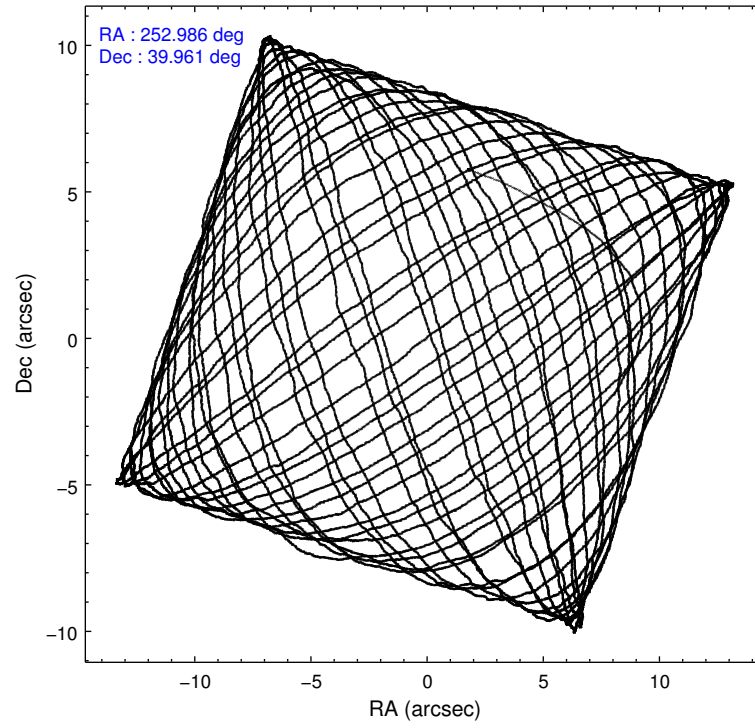
	ccd 2	ccd 3	ccd 5	ccd 6	ccd 7
level 1 events	97144	91893	178495	109022	136607
rejected events	86375	79554	88695	88031	77928
rejected %	88%	86%	49%	80%	57%

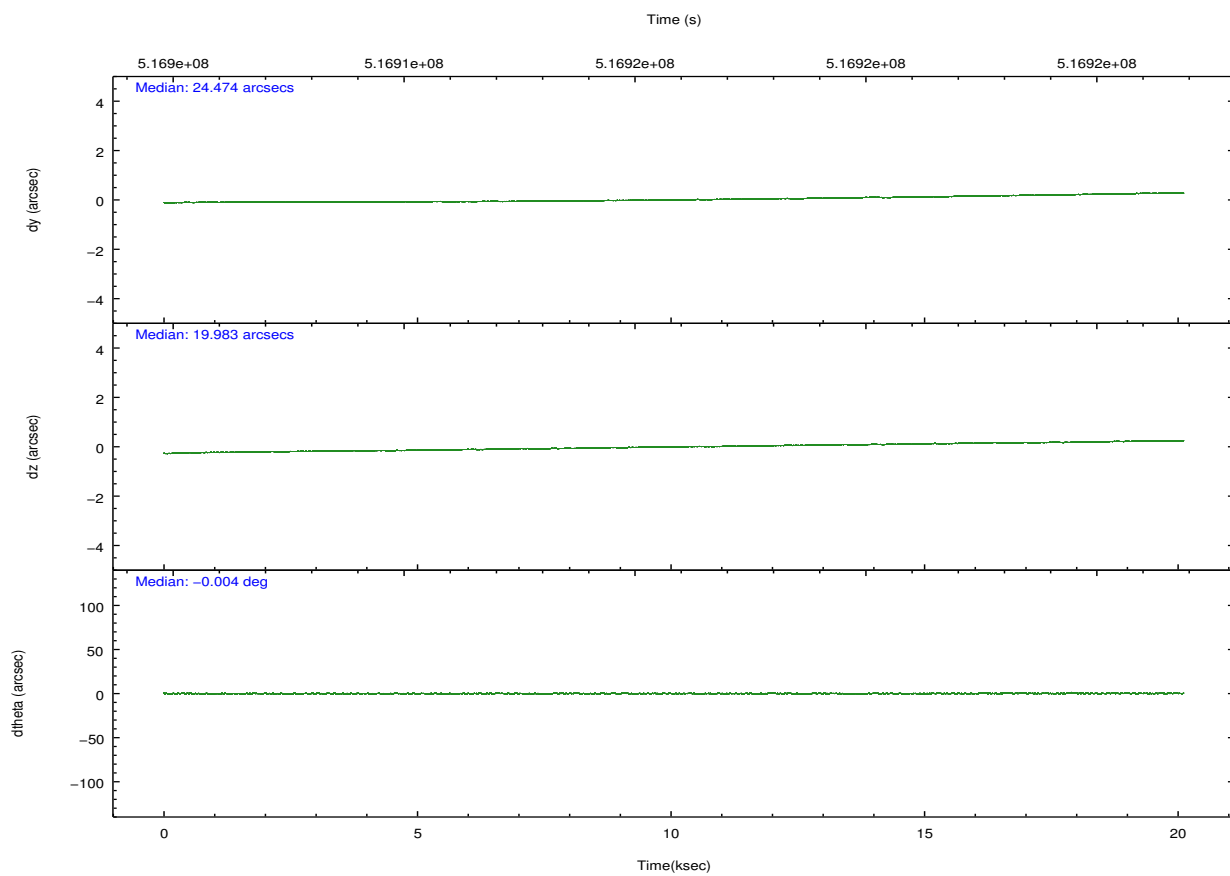
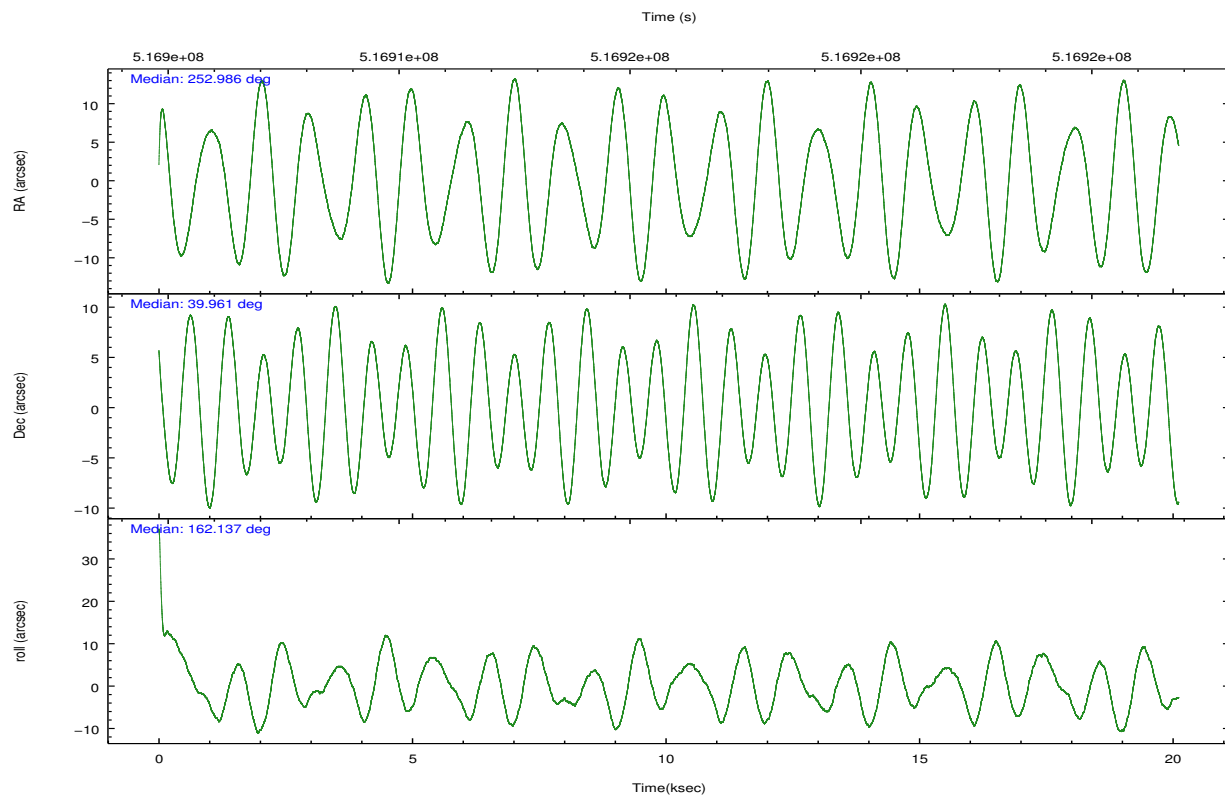
	ccd 2	ccd 3	ccd 5	ccd 6	ccd 7
grade 0 events	3866	4923	16201	4657	5130
	3%	5%	9%	4%	3%
grade 1 events	34	54	3844	49	159
	0%	0%	2%	0%	0%
grade 2 events	2567	2491	25339	10974	12319
	2%	2%	14%	10%	9%
grade 3 events	1103	1210	2694	1235	4756
	1%	1%	1%	1%	3%
grade 4 events	1133	1263	2656	1222	4718
	1%	1%	1%	1%	3%
grade 5 events	4059	5218	11599	5209	13875
	4%	5%	6%	4%	10%
grade 6 events	2103	2459	42952	2910	31776
	2%	2%	24%	2%	23%
grade 7 events	82279	74275	73210	82766	63874
	84%	80%	41%	75%	46%

2.2 Compared Parameters

Parameter	Planned	Actual	Parameter	Planned	Actual
Instrument	ACIS	ACIS	Obspar format version number	7	7
Detector	ACIS-23567	ACIS-23567	Obspar file type	PREDICTED	ACTUAL
Grating	NONE	NONE	Obspar update status	NONE	UPDATED
Data mode	VFAINT	VFAINT	Number of optional ACIS chips dropped	0	0
Observation mode	POINTING	POINTING	On-chip summing requested	N	N
[deg] Pointing RA	253.021021	252.9862577746512	Subarray requested	NONE	NONE
[deg] Pointing Dec	39.967004	39.96088865791913	Alternating exposures requested	N	N
[deg] Pointing Roll	161.962722	162.1416946447253	[s] Primary exposure time	0.000000	3.1
[mm] SIM focus pos	-0.684267	-0.6828225247311905			
[mm] SIM defocus	0	0.001444936568705701			
[mm] SIM translation stage pos	-190.132523	-190.1425803651734			
[mm] SIM translation stage offset	0	0.01005778216563158			
[s] Observation start time (MET)	516905902.184000	516904391.74163			
Observation start date	2014-05-19T16:57:15	2014-05-19T16:33:11			
[s] Observation end time (MET)	516925902.184000	516926770.56786			
Observation end date	2014-05-19T22:30:35	2014-05-19T22:46:10			
Read mode	TIMED	TIMED			

2.3 Aspect



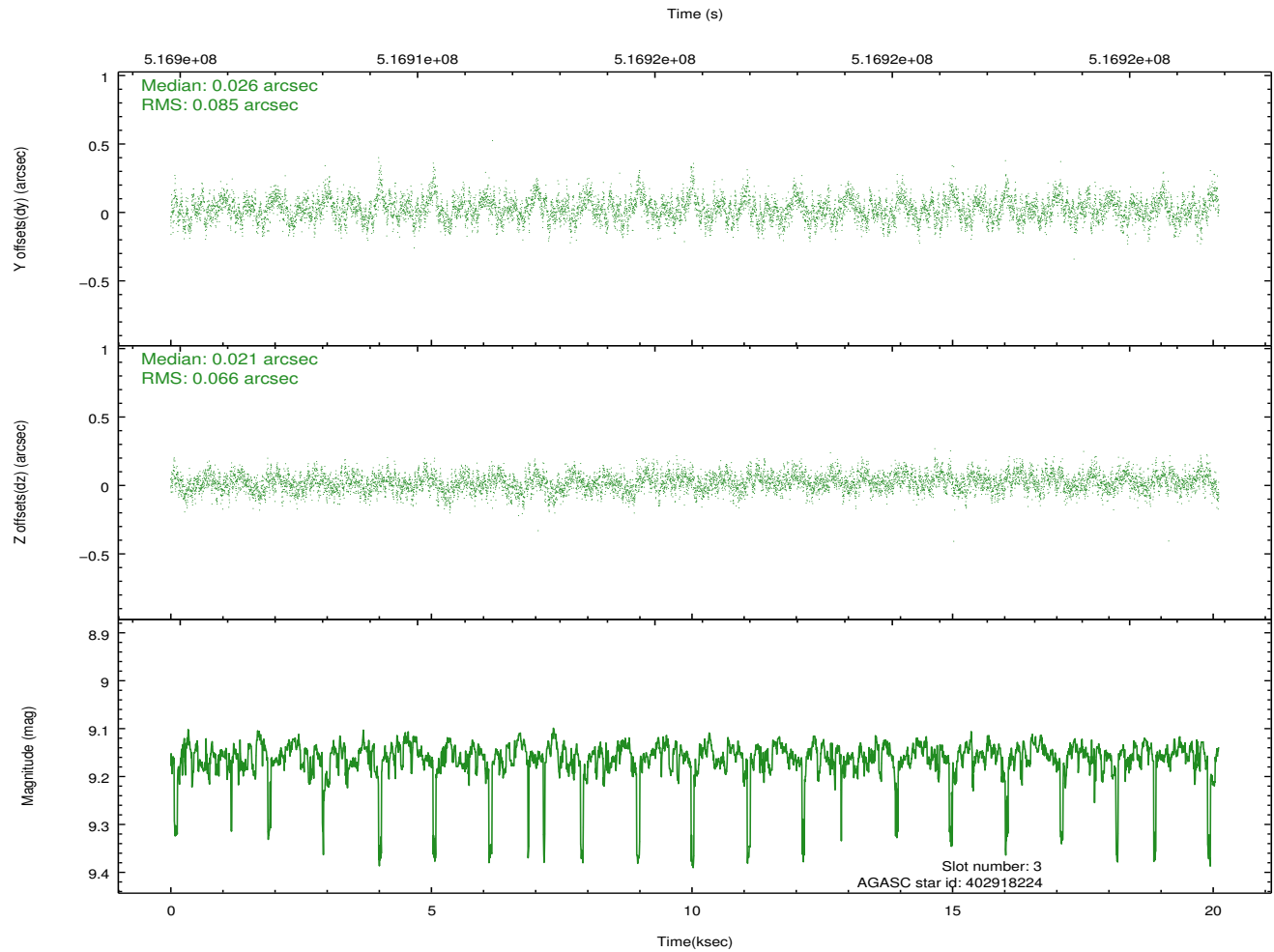
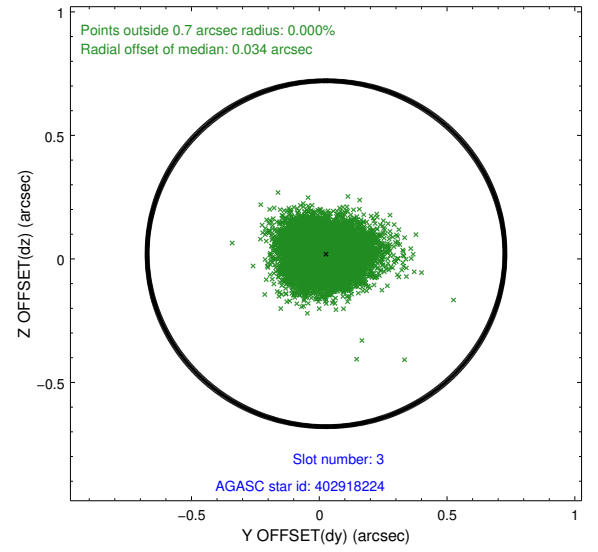
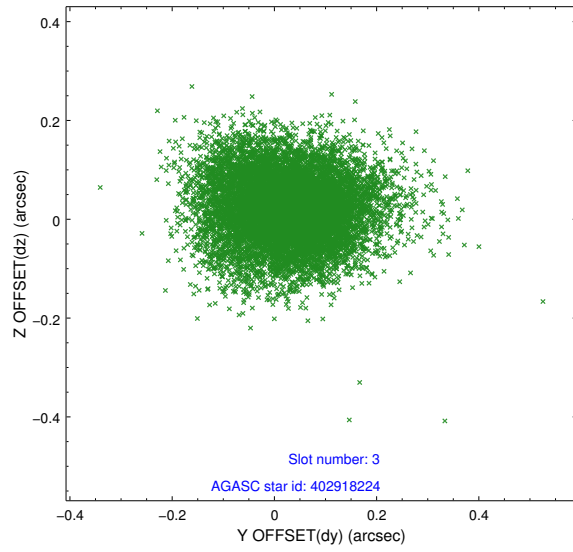


Slot Statistics

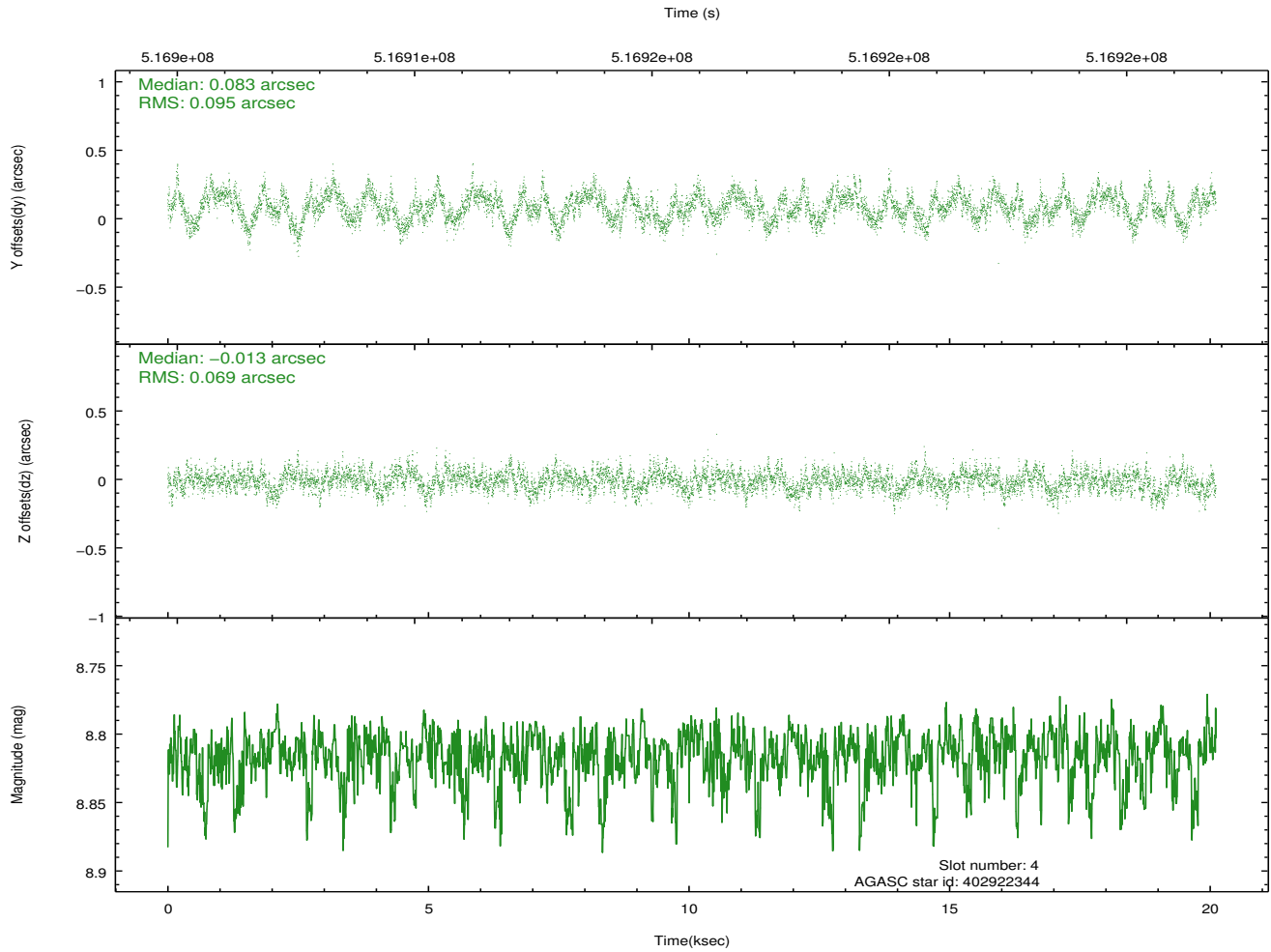
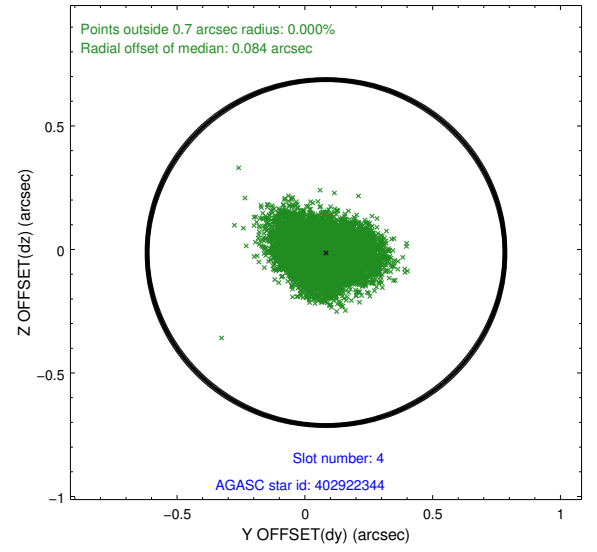
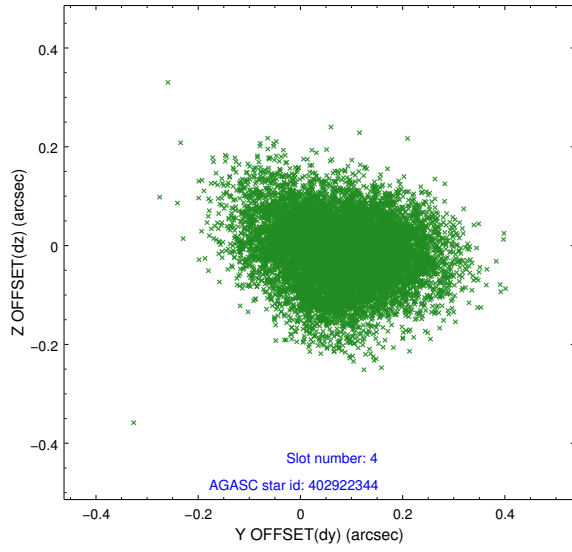
slot	status	used	id	mag	n_pts	med_dy	med_dz	dr1	dr2	ra	dec	mean_y	mean_z
0	FID		ACIS-S-2	7.05	4905	-0.201	-0.039	0.009	0.014	0.000000	0.000000	-777.93	-1741.48
1	FID		ACIS-S-4	7.14	4906	0.412	0.107	0.006	0.012	0.000000	0.000000	2135.87	166.97
2	FID		ACIS-S-5	7.16	4906	-0.243	-0.060	0.008	0.013	0.000000	0.000000	-1830.58	160.67
3	GUIDE	used	402918224	9.16	9804	0.026	0.021	0.114	0.186	252.378543	40.459159	2224.13	-1145.17
4	GUIDE	used	402922344	8.82	9806	0.083	-0.013	0.124	0.202	252.490595	40.660973	2153.31	-1930.98
5	GUIDE	used	403046664	9.22	9805	-0.041	-0.019	0.167	0.262	252.703003	40.148162	1034.65	-349.95
6	GUIDE	used	403056120	9.64	9799	-0.075	-0.198	0.214	0.318	253.247188	39.605574	-997.77	1042.73
7	GUIDE	used	403054480	7.86	9810	0.006	0.194	0.080	0.134	253.842389	39.856144	-2278.37	-332.92

2.4 Star Slots

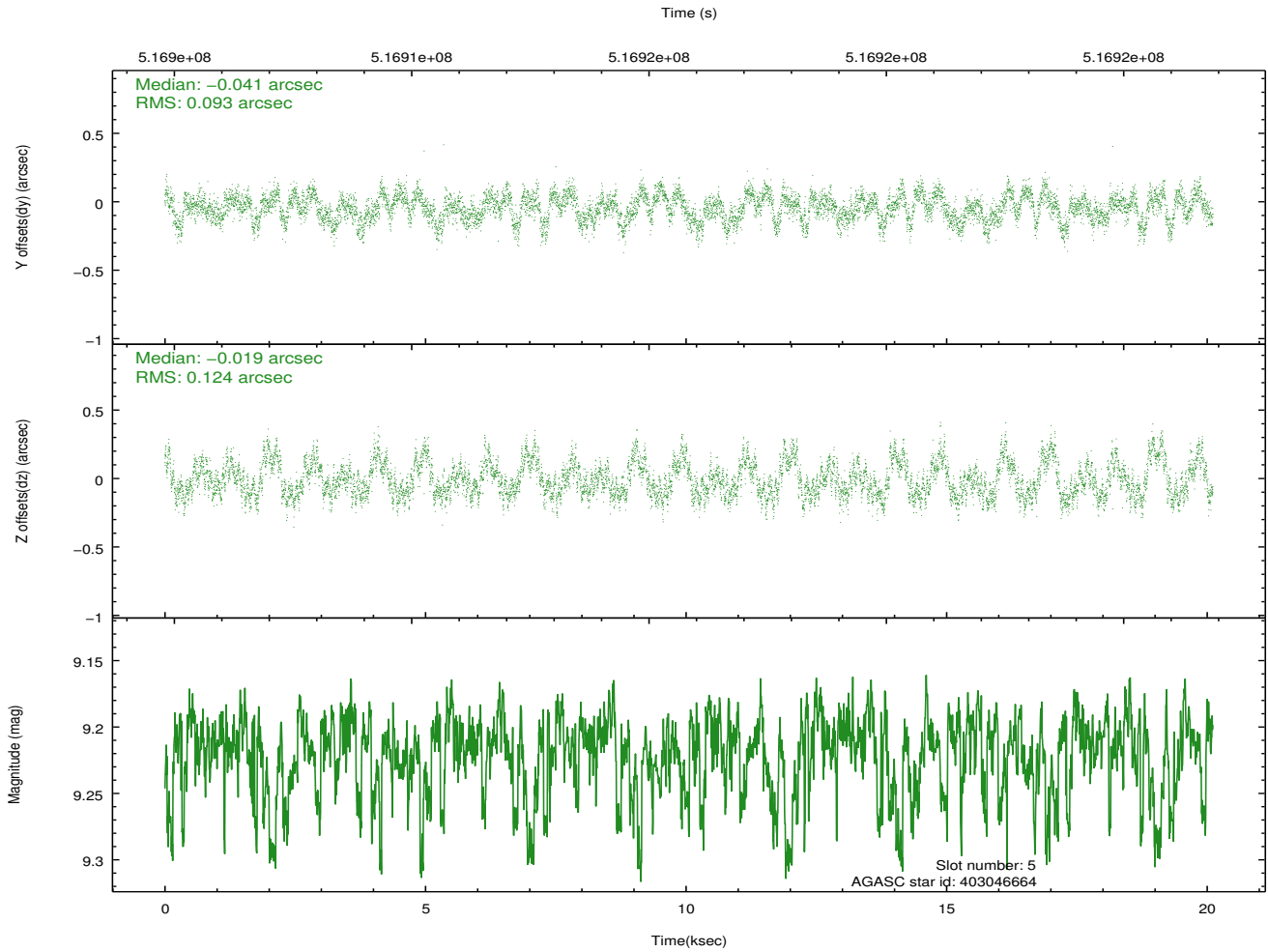
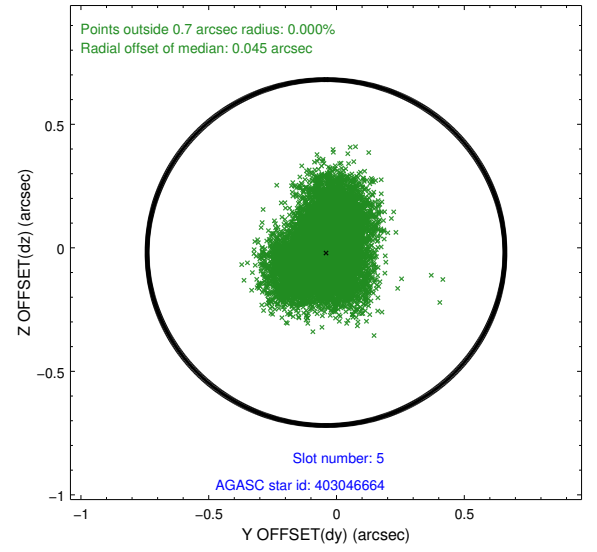
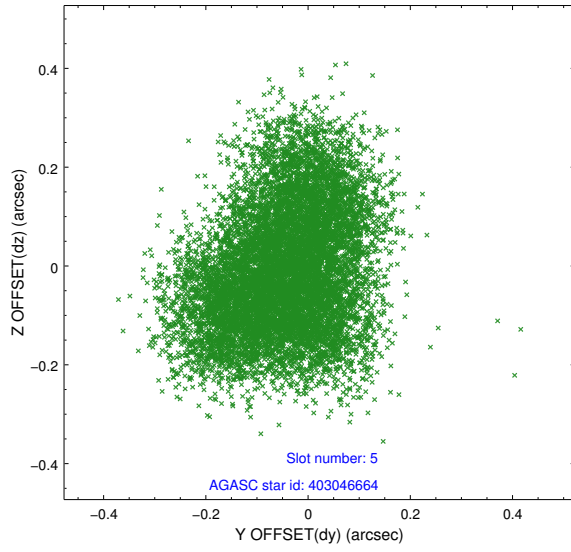
2.4.1 Slot 3



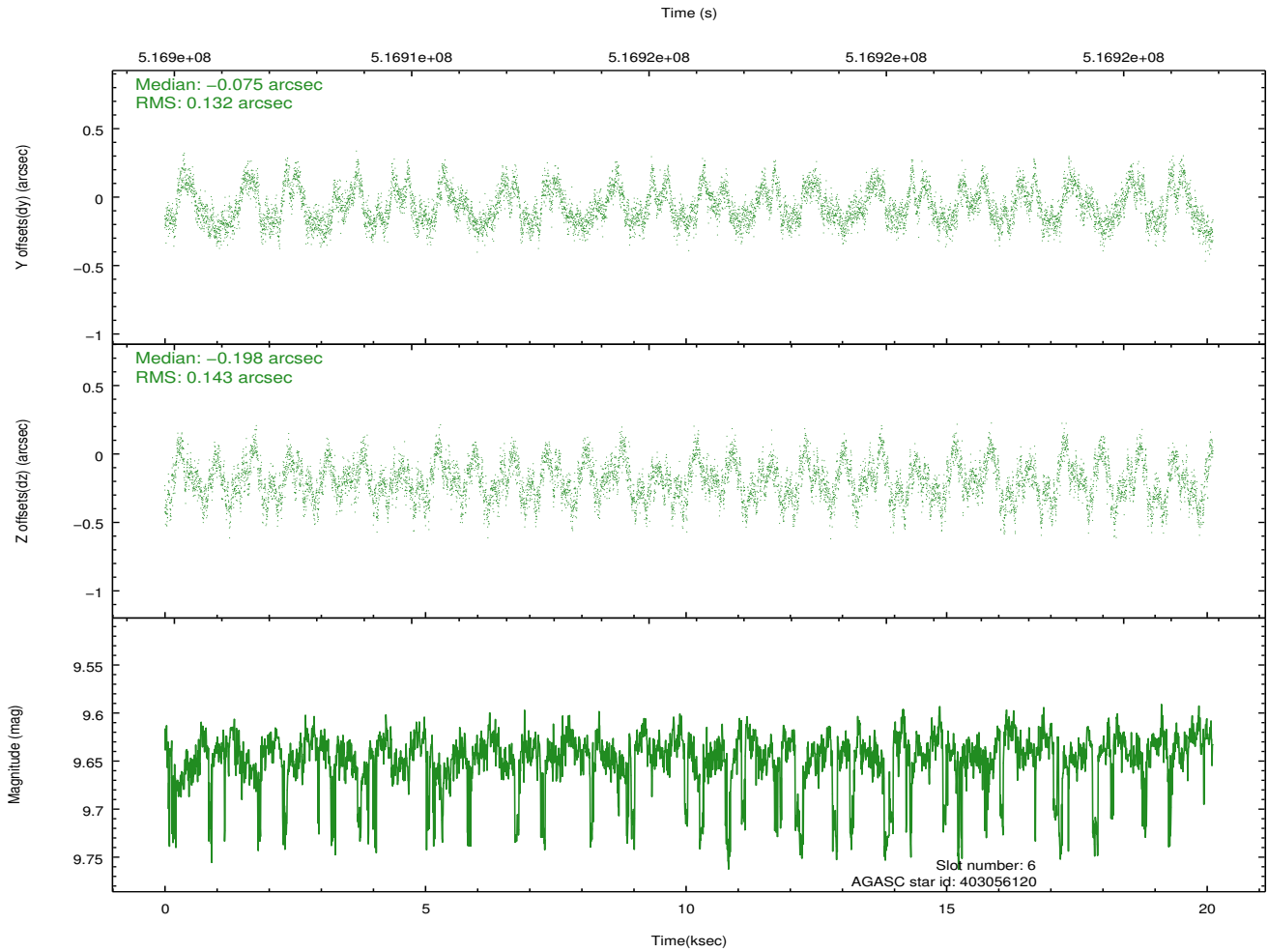
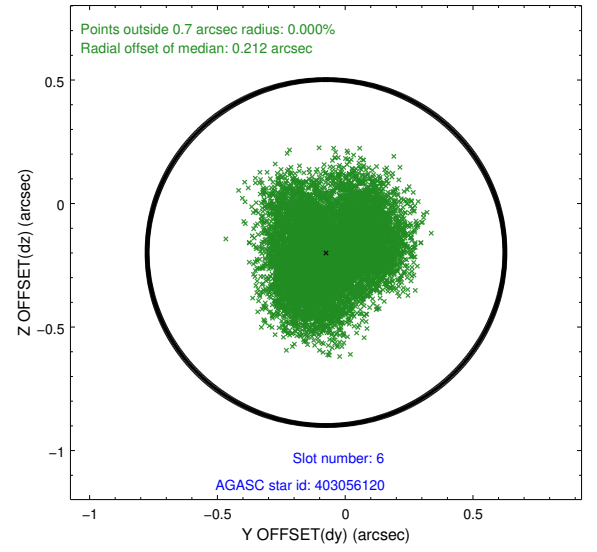
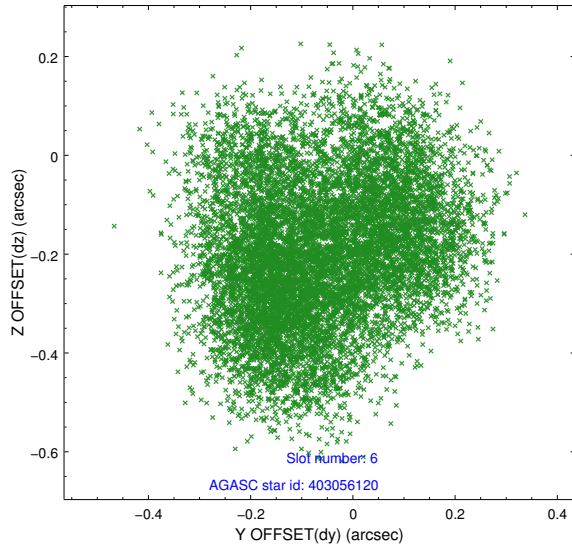
2.4.2 Slot 4



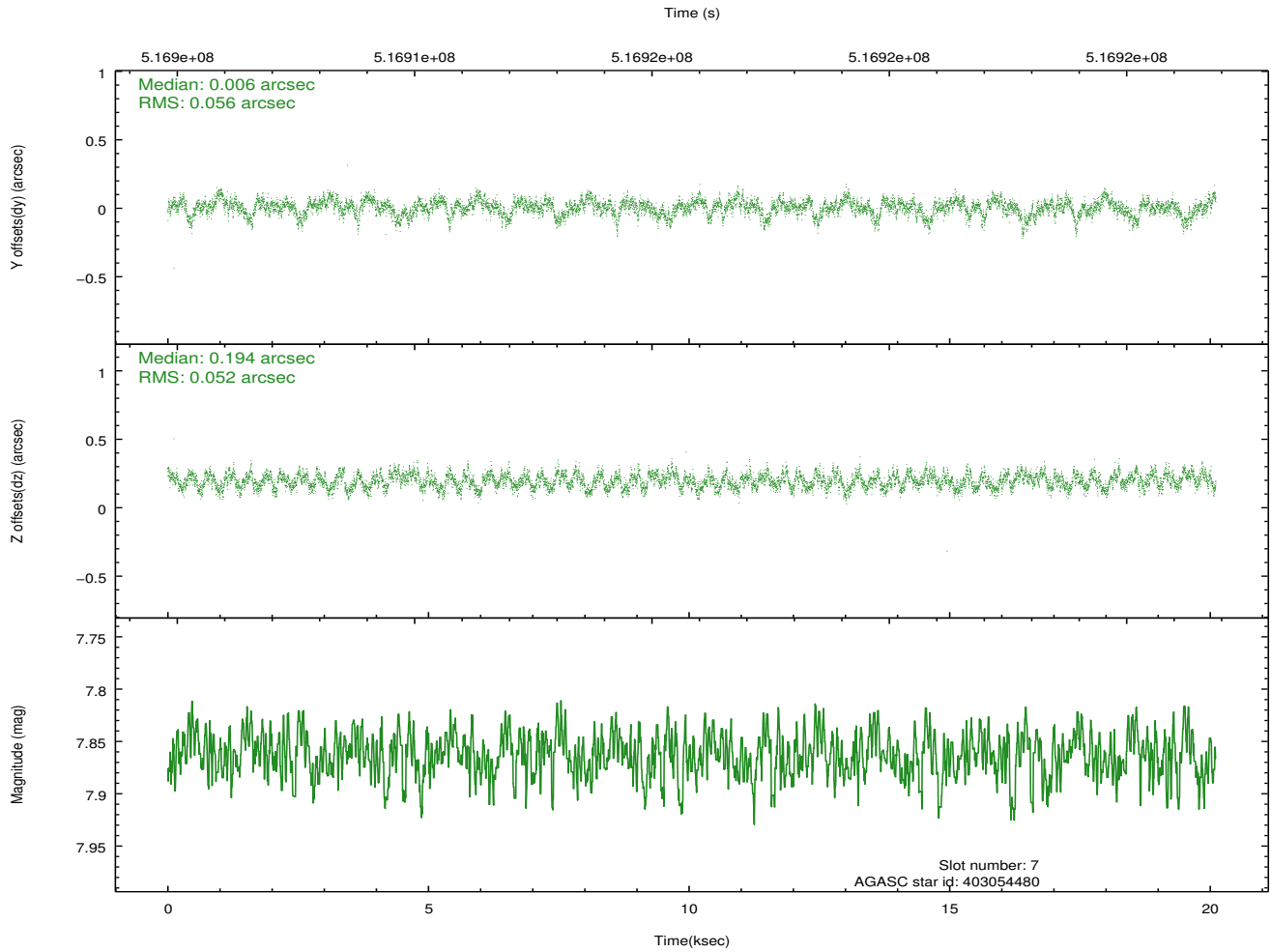
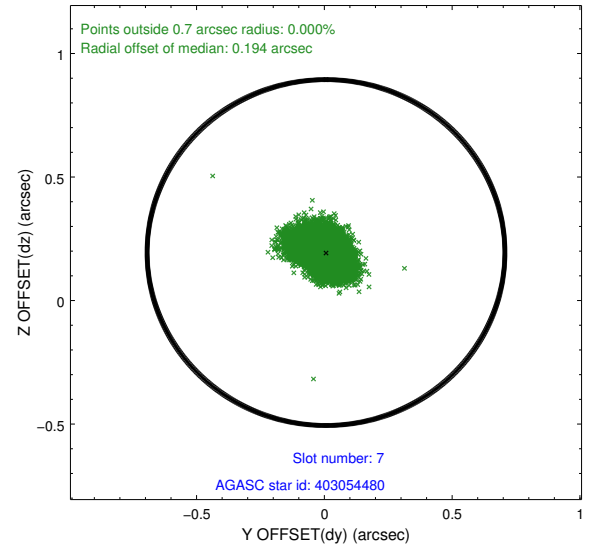
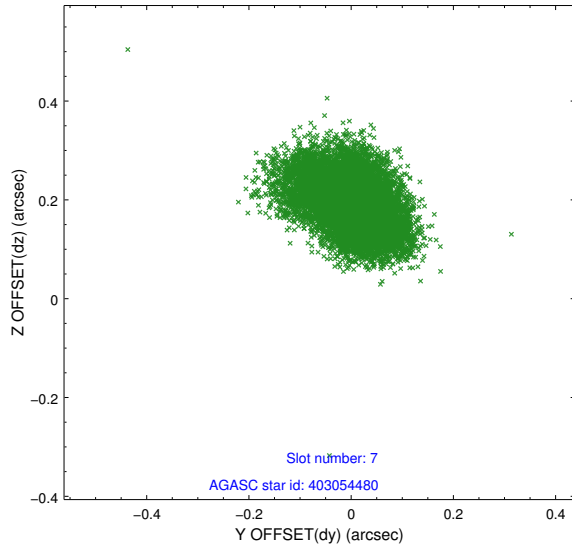
2.4.3 Slot 5



2.4.4 Slot 6

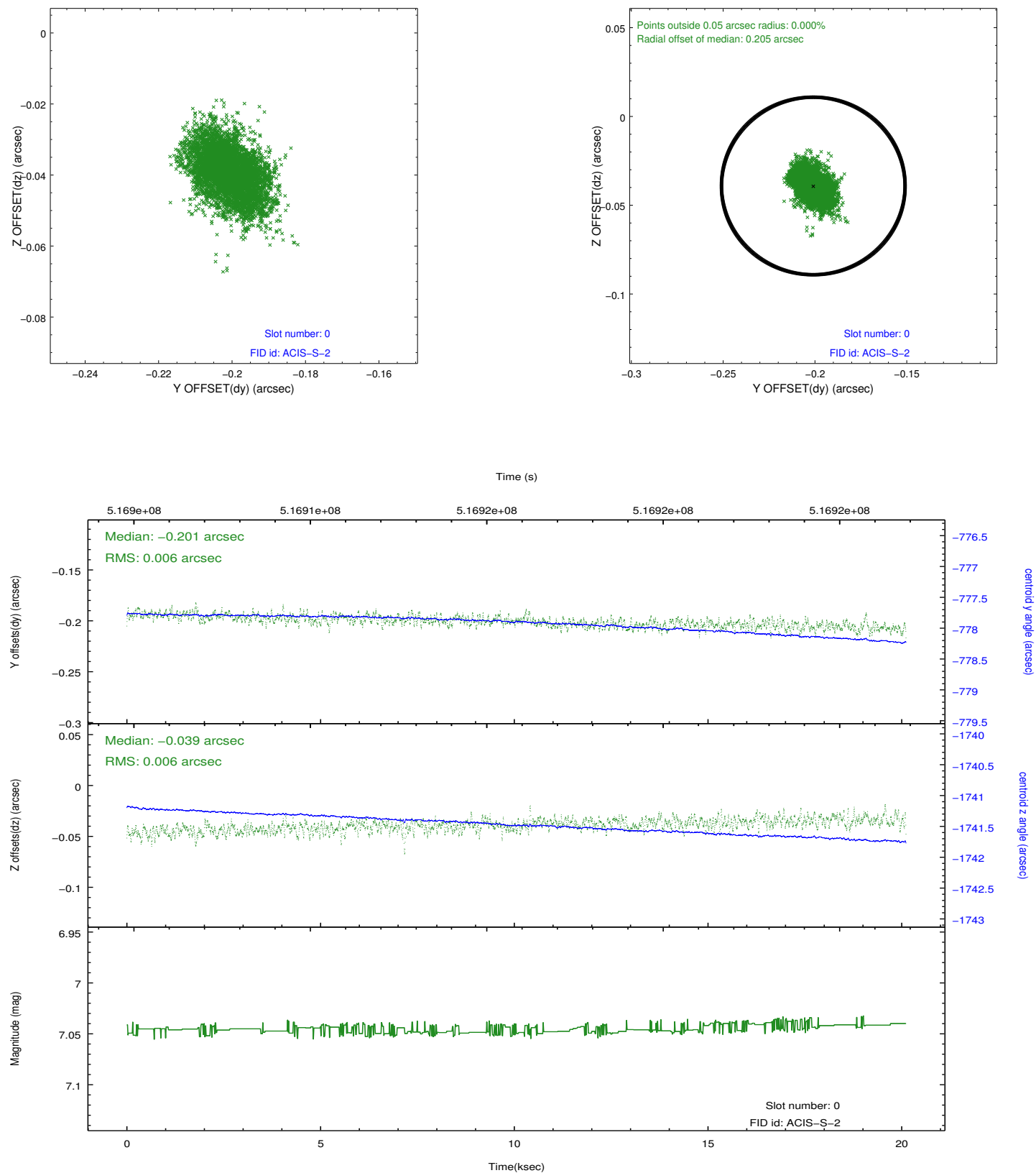


2.4.5 Slot 7

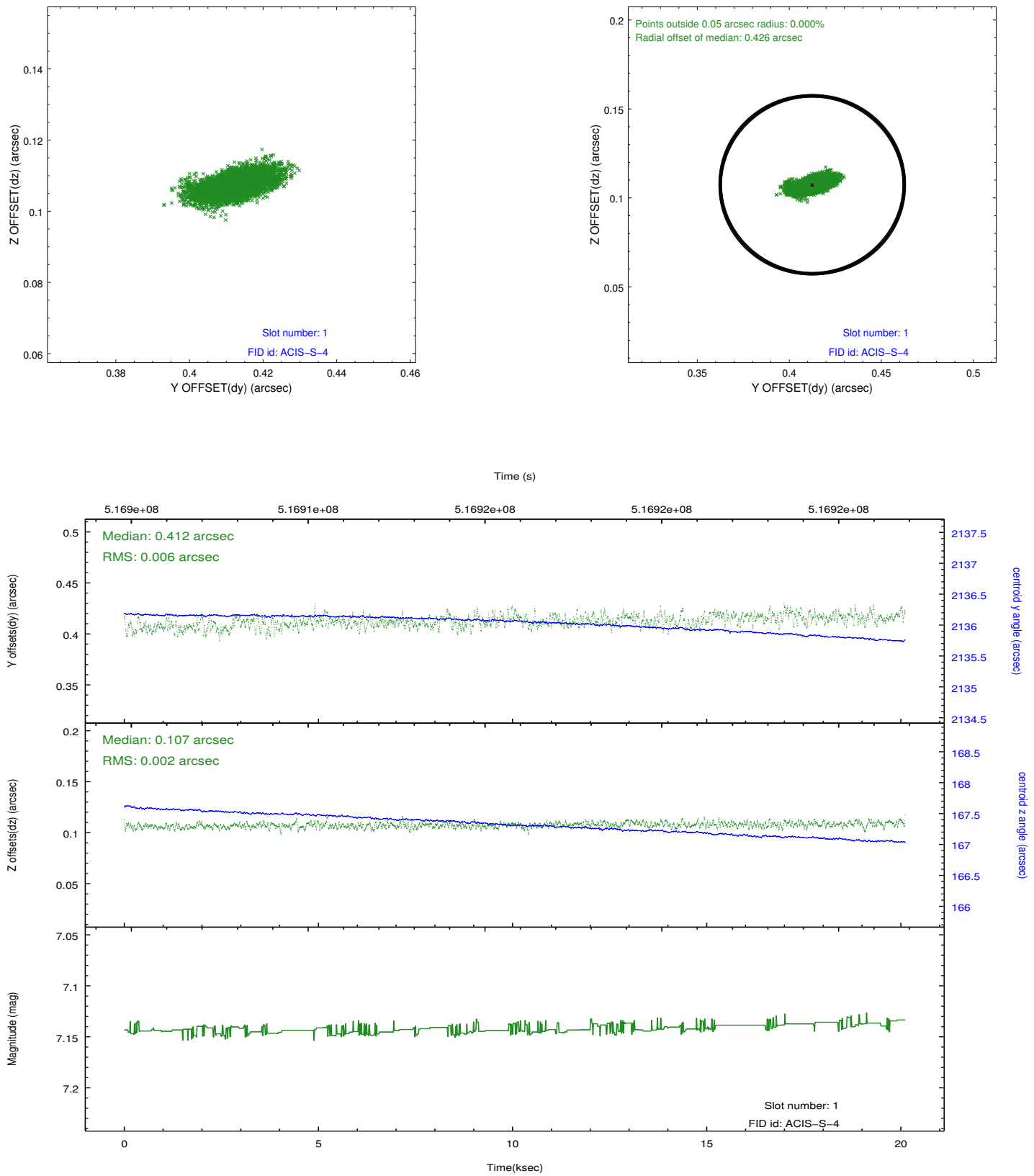


2.5 FID Slots

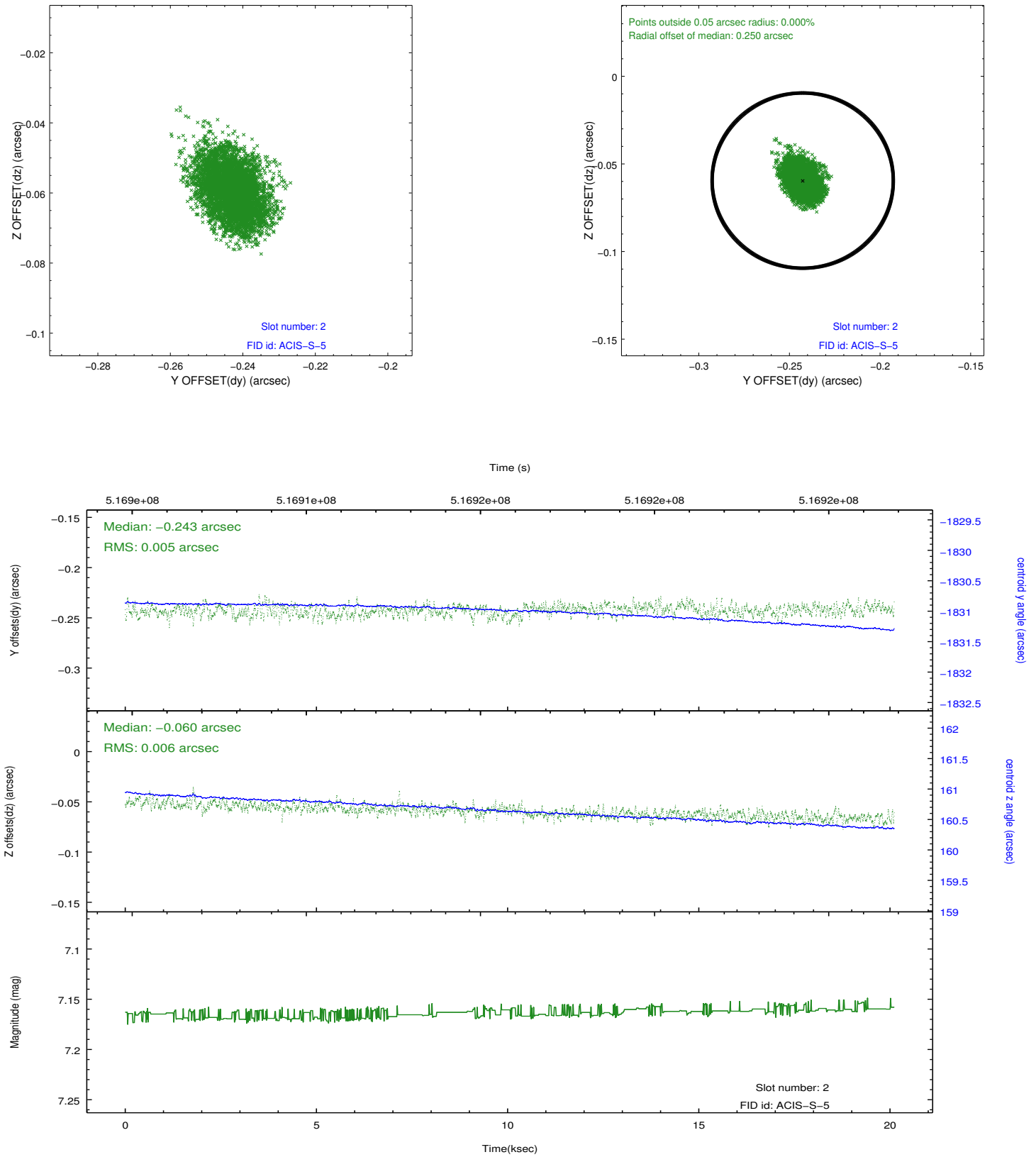
2.5.1 Slot 0



2.5.2 Slot 1



2.5.3 Slot 2



A Summary

A.1 Status

V&V Scientist	Beth Sundheim
V&V Date (YYYY-MM-DD)	2014.12.18
V&V Edition	1
V&V Disposition and Status	OK
V&V Charge Time	20.066300154328

A.2 Comments

These data have been reprocessed with new aspect alignment calibration files that correct small mean offsets (up to 0.4 arcsecs) and improve overall astrometric accuracy. The new calibration was determined using data from the time period being reprocessed and was performed using cross-correlation of X-ray sources with radio and optical counterparts.