

V&V Reference Report

L2 ASCDS Version : 8.5.1.1

Observation 14912 - L2 Version 2
Chandra X-Ray Center

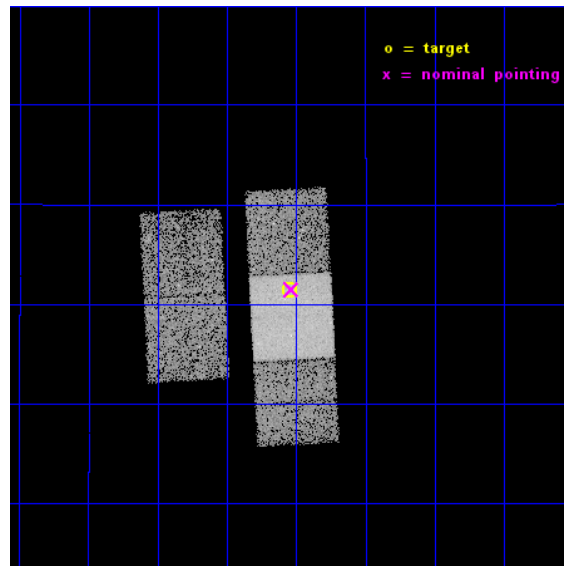
L2 Processing Date : Dec 1 2014

Contents

1	Front	2
2	OBI	3
2.1	OBI	3
2.1.1	Images	3
2.1.2	Bias	3
2.1.3	Parameters	4
2.1.4	Events	4
2.2	Compared Parameters	5
2.3	Aspect	6
2.4	Star Slots	9
2.4.1	Slot 3	9
2.4.2	Slot 4	10
2.4.3	Slot 5	11
2.4.4	Slot 6	12
2.4.5	Slot 7	13
2.5	FID Slots	14
2.5.1	Slot 0	14
2.5.2	Slot 1	15
2.5.3	Slot 2	16
A	Summary	17
A.1	Status	17
A.2	Comments	17

1 Front

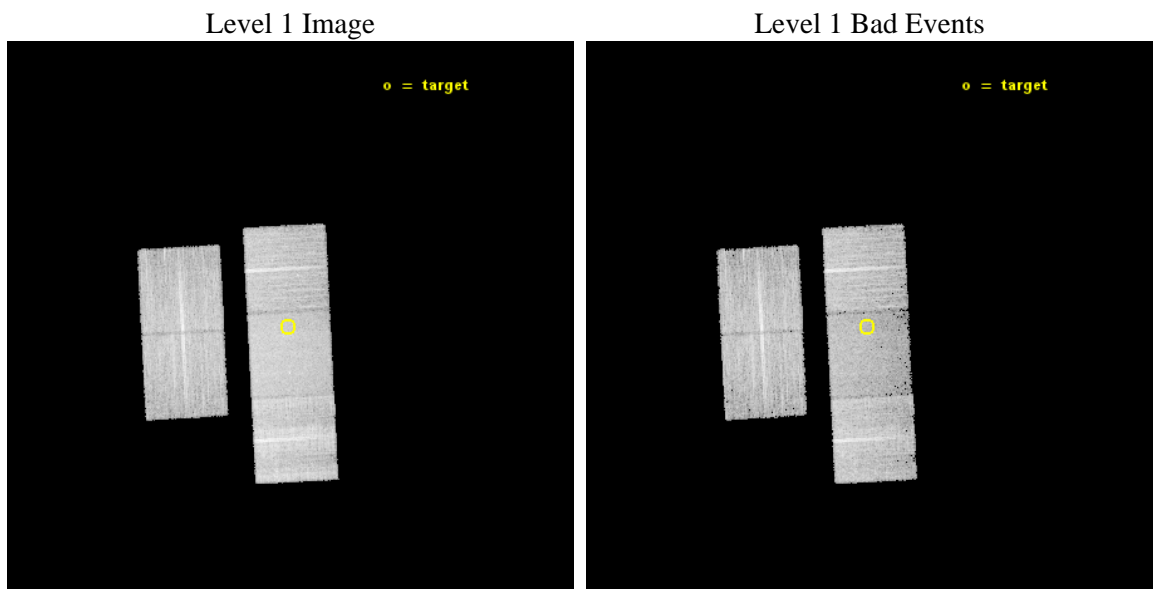
seq_num	601042	Sequence number
obs_id	14912	Observation id
title	The Origin of Elevated X-ray Emission in Strong Halpha Emitting Galaxies	Proposal title
observer	Dr. Ranga Ram Chary	Principal investigator
object	HAE 145	Source name
dtcycle	0	
cycle	P	events from which exps? Prim/Second/Both
ra_targ	177.51125	Observer's specified target RA [deg]
dec_targ	15.023194	Observer's specified target Dec [deg]
ra_nom	177.50867650372	Nominal RA [deg]
dec_nom	15.024930646851	Nominal Dec [deg]
roll_nom	86.983548627001	Nominal Roll [deg]
revision	2	Processing version of data
ontime	15106.112733424	Sum of GTIs [s]
livetime	14908.740249603	Livetime [s]
ontime2	15105.948573411	Sum of GTIs [s]
ontime3	15106.030653417	Sum of GTIs [s]
ontime6	15106.07169342	Sum of GTIs [s]
ontime7	15106.112733424	Sum of GTIs [s]
ontime8	15105.989613414	Sum of GTIs [s]
l2events	72557	Number of level 2 events



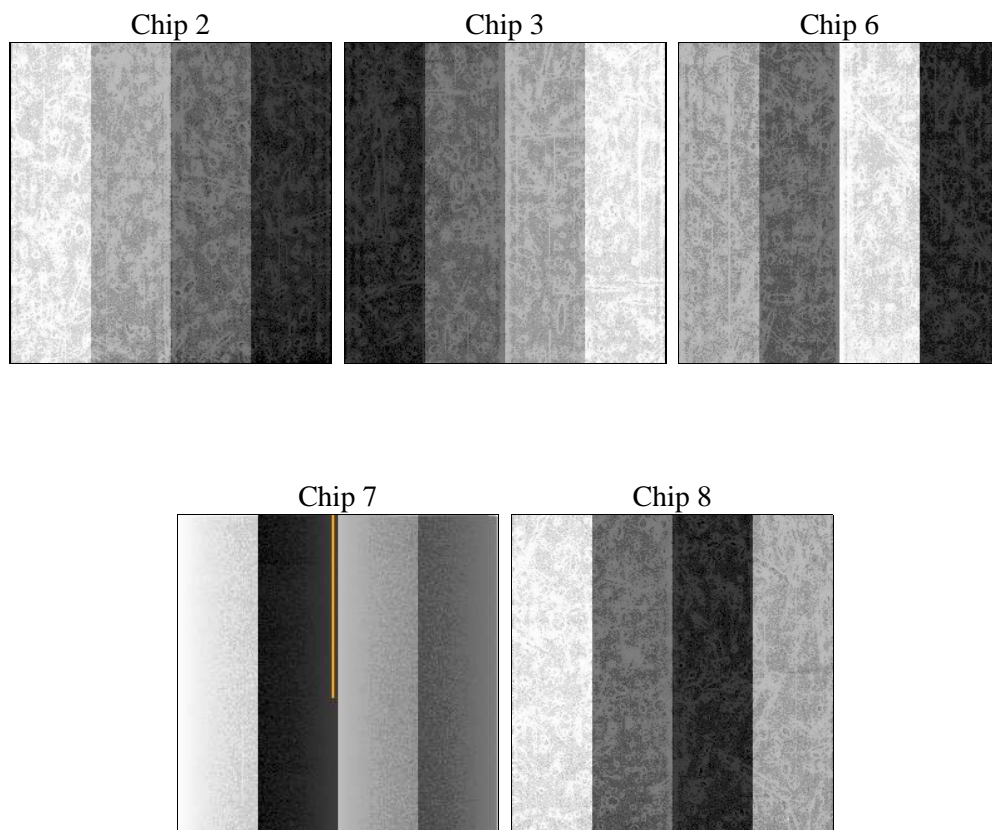
2 OBI

2.1 OBI

2.1.1 Images



2.1.2 Bias



2.1.3 Parameters

obi_num	0	Obi number	sched_exp_time	15000.000000	[s] Scheduled observation exposure time
ascdsver	10.3	Processing system revision	ontime	15106.112733424	Sum of GTIs [s]
caldsver	4.6.4	 	ontime2	15105.948573411	Sum of GTIs [s]
date	2014-12-01T11:24:22	Date and time of file creation	ontime3	15106.030653417	Sum of GTIs [s]
revision	2	Processing version of data	ontime6	15106.07169342	Sum of GTIs [s]
			ontime7	15106.112733424	Sum of GTIs [s]
			ontime8	15105.989613414	Sum of GTIs [s]
			l1events	430606	Number of level 1 events

2.1.4 Events

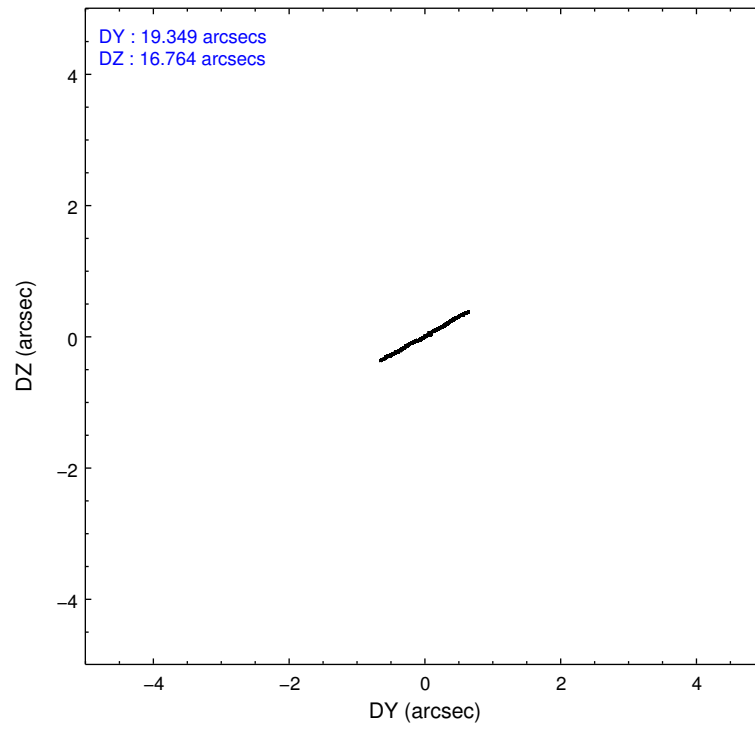
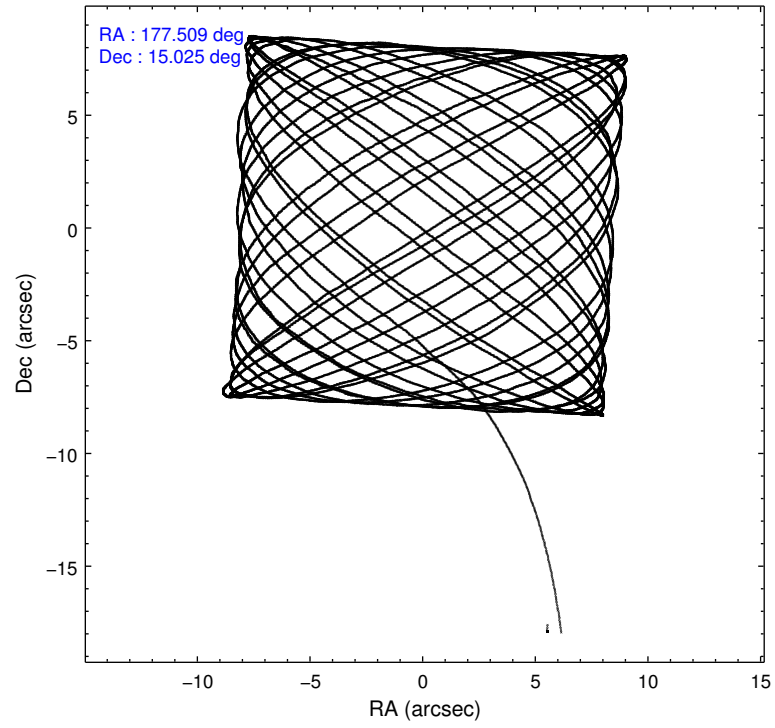
	ccd 2	ccd 3	ccd 6	ccd 7	ccd 8
level 1 events	77644	76772	79847	90915	105428
rejected events	69208	68060	70337	48589	75277
rejected %	89%	88%	88%	53%	71%

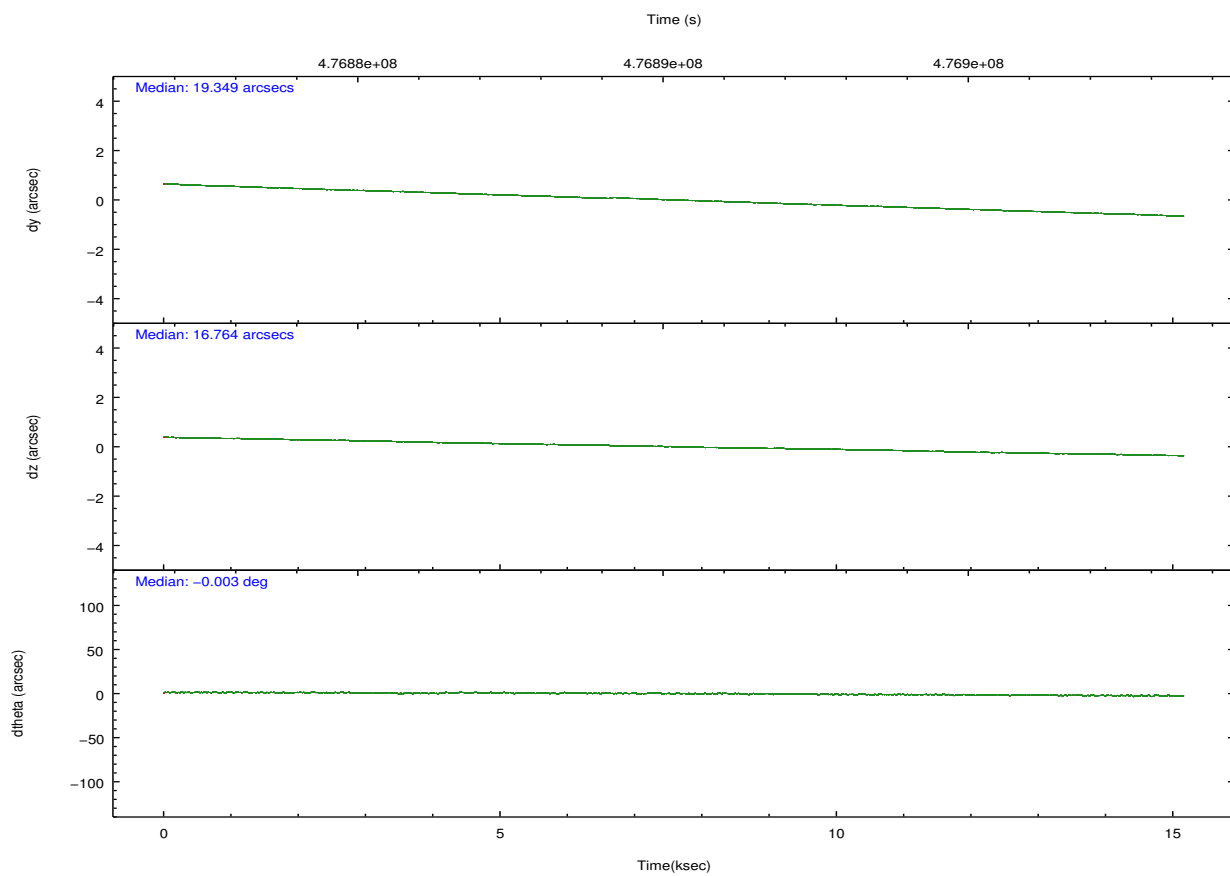
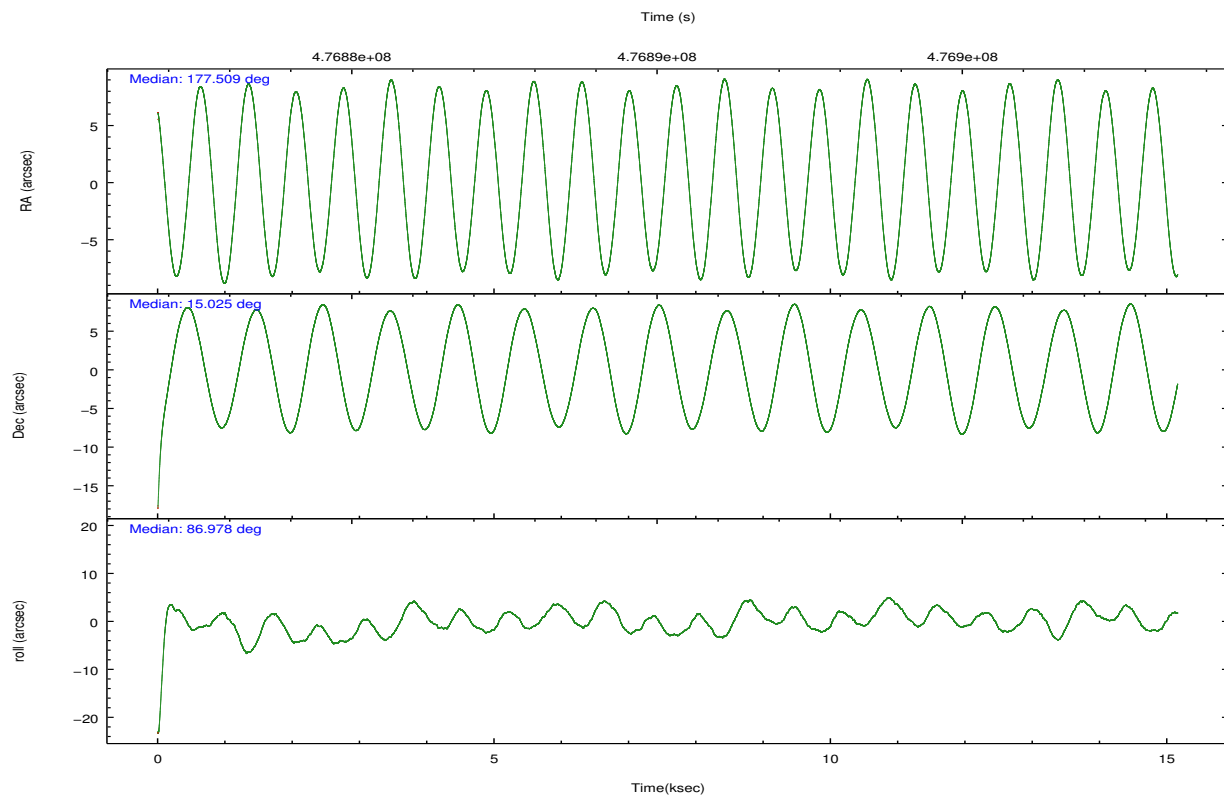
	ccd 2	ccd 3	ccd 6	ccd 7	ccd 8
grade 0 events	3192	3270	3356	4017	8783
	4%	4%	4%	4%	8%
grade 1 events	40	42	34	128	94
	0%	0%	0%	0%	0%
grade 2 events	1945	1931	2170	8956	6998
	2%	2%	2%	9%	6%
grade 3 events	869	891	935	3644	3312
	1%	1%	1%	4%	3%
grade 4 events	892	897	939	3644	3193
	1%	1%	1%	4%	3%
grade 5 events	2684	3483	3470	9420	5323
	3%	4%	4%	10%	5%
grade 6 events	1543	1731	2117	22080	7913
	1%	2%	2%	24%	7%
grade 7 events	66479	64527	66826	39026	69812
	85%	84%	83%	42%	66%

2.2 Compared Parameters

Parameter	Planned	Actual	Parameter	Planned	Actual
Instrument	ACIS	ACIS	Obspar format version number	7	7
Detector	ACIS-23678	ACIS-23678	Obspar file type	PREDICTED	ACTUAL
Grating	NONE	NONE	Obspar update status	NONE	UPDATED
Data mode	FAINT	FAINT	CCD I0 on	N	N
Observation mode	POINTING	POINTING	CCD I1 on	N	N
[deg] Pointing RA	177.521884	177.5086765037216	CCD I2 on	Y	Y
[deg] Pointing Dec	15.000751	15.02493064685123	CCD I3 on	Y	Y
[deg] Pointing Roll	86.823513	86.98354862700138	CCD S0 on	N	N
[mm] SIM focus pos	-0.684267	-0.6828225247311905	CCD S1 on	O1	N
[mm] SIM defocus	0	0.001444936568705701	CCD S2 on	Y	Y
[mm] SIM translation stage pos	-190.132523	-190.1400660498719	CCD S3 on	Y	Y
[mm] SIM translation stage offset	0	0.00754346686406393	CCD S4 on	Y	Y
[s] Observation start time (MET)	476882754.184000	476881463.62988	CCD S5 on	N	N
Observation start date	2013-02-10T11:24:47	2013-02-10T11:04:23	Number of optional ACIS chips dropped	1	1
[s] Observation end time (MET)	476897754.184000	476898730.78081	On-chip summing requested	N	N
Observation end date	2013-02-10T15:34:47	2013-02-10T15:52:10	Subarray requested	NONE	NONE
Read mode	TIMED	TIMED	Alternating exposures requested	N	N
			[s] Primary exposure time	0.000000	3.1

2.3 Aspect



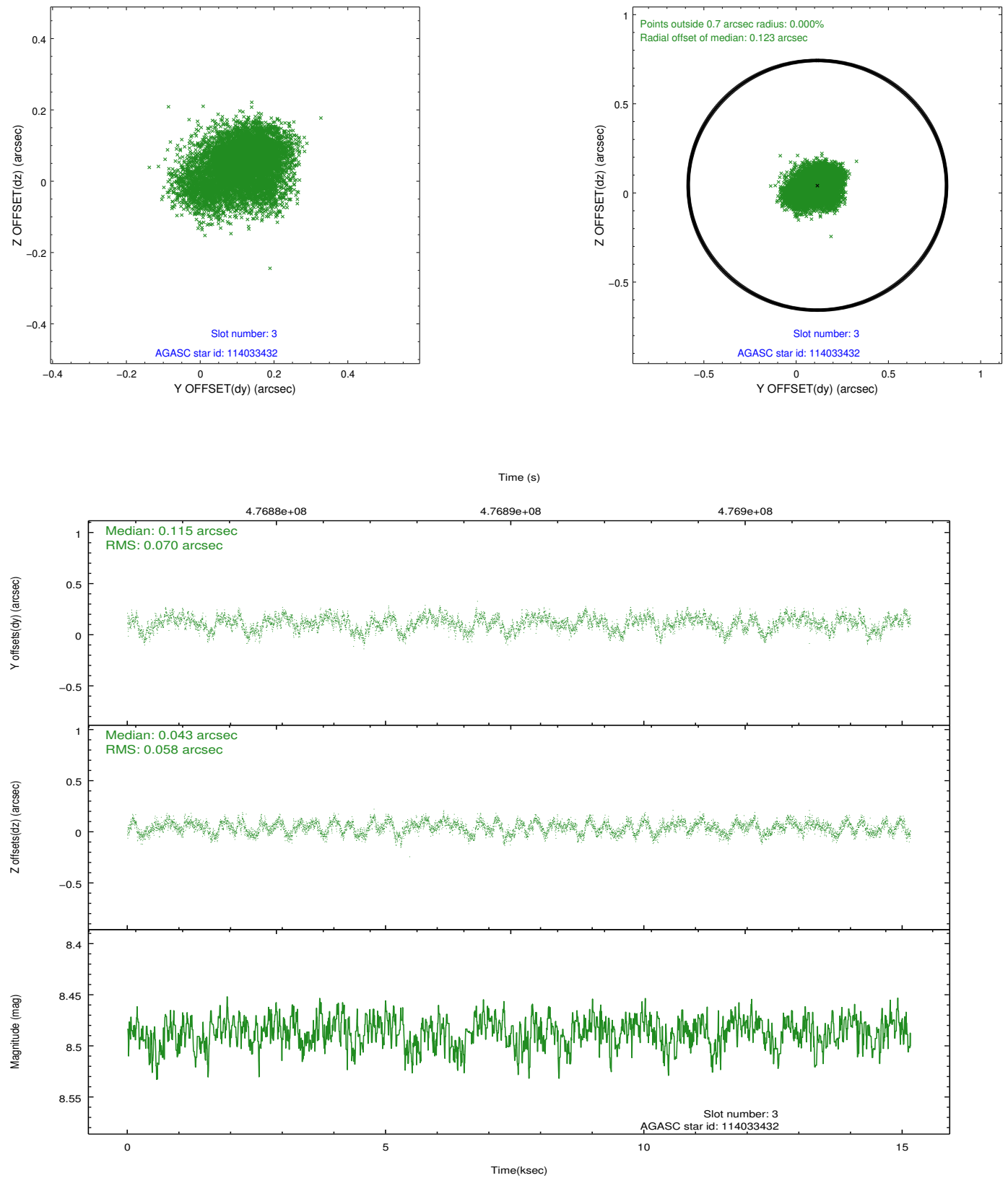


Slot Statistics

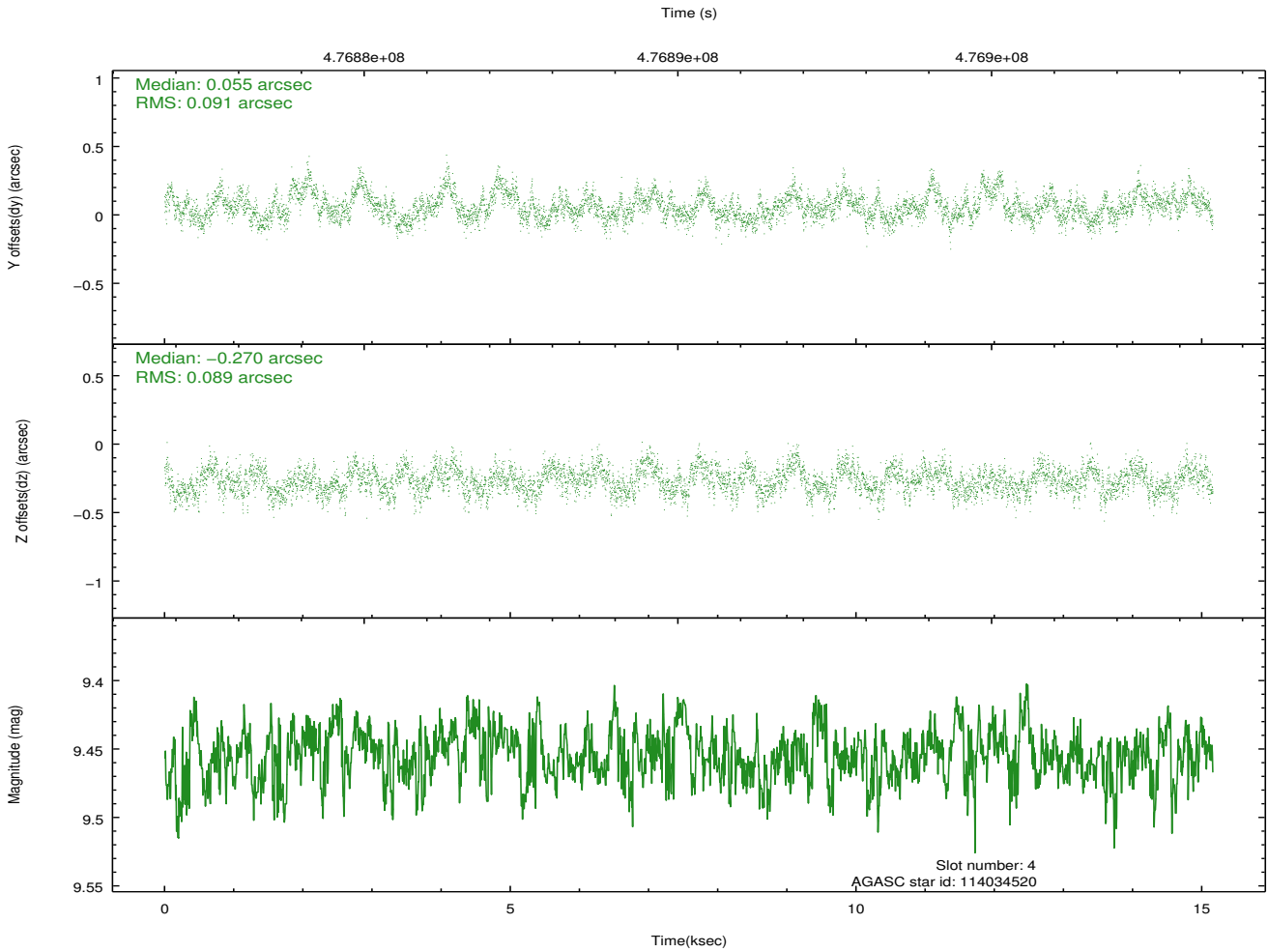
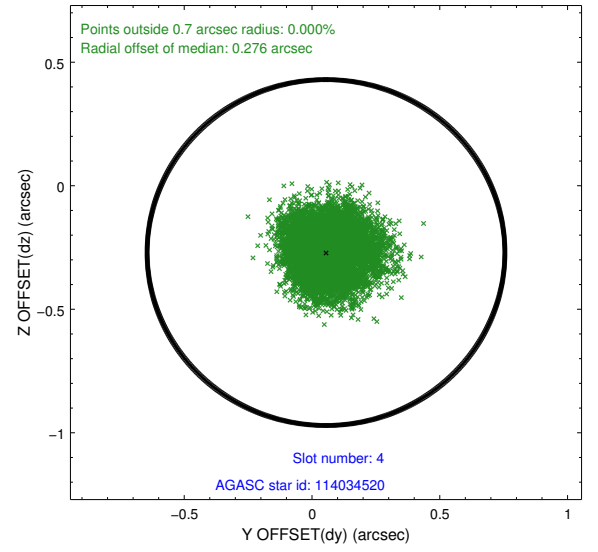
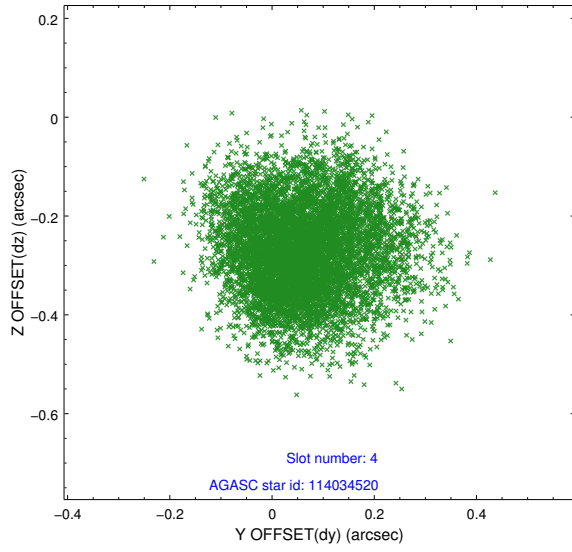
slot	status	used	id	mag	n_pts	med_dy	med_dz	dr1	dr2	ra	dec	mean_y	mean_z
0	FID		ACIS-S-2	7.05	3697	-0.134	-0.059	0.009	0.018	0.000000	0.000000	-772.59	-1738.24
1	FID		ACIS-S-4	7.13	3698	0.329	0.081	0.008	0.017	0.000000	0.000000	2141.04	170.03
2	FID		ACIS-S-5	7.16	3698	-0.226	-0.013	0.010	0.018	0.000000	0.000000	-1825.11	164.00
3	GUIDE	used	114033432	8.49	7391	0.115	0.043	0.098	0.157	177.246575	14.507541	-1824.82	860.48
4	GUIDE	used	114034520	9.45	7389	0.055	-0.270	0.137	0.215	176.867896	14.578200	-1642.44	2191.20
5	GUIDE	used	114035152	9.72	7383	0.141	0.110	0.264	0.372	177.261120	14.396421	-2221.82	788.23
6	GUIDE	used	188876936	7.22	7394	-0.097	0.155	0.127	0.202	178.192608	15.436322	1697.49	-2236.67
7	GUIDE	used	188877664	9.21	7378	-0.214	-0.038	0.137	0.218	177.271057	15.231168	781.06	915.84

2.4 Star Slots

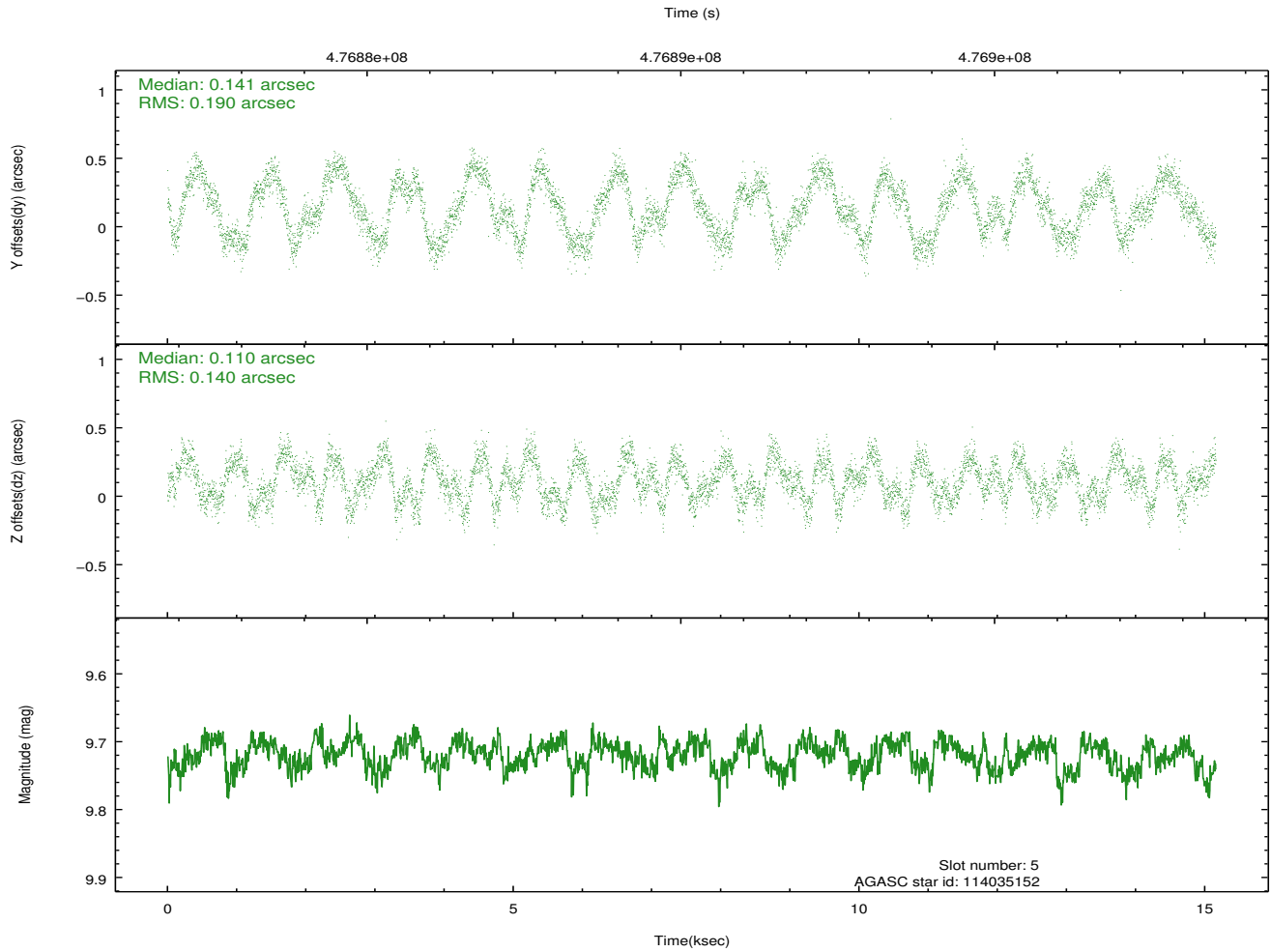
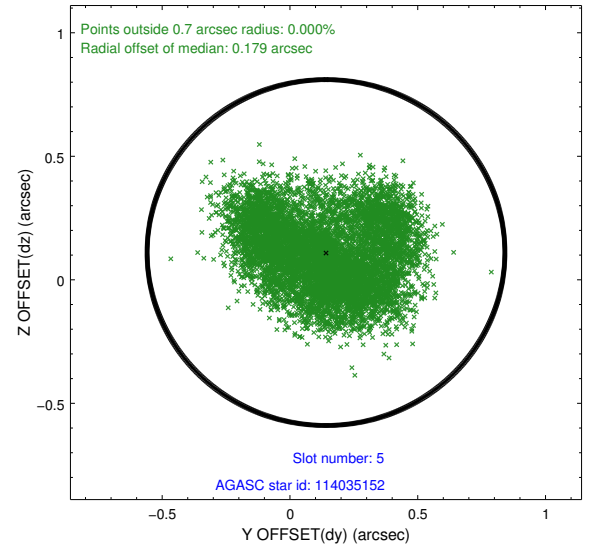
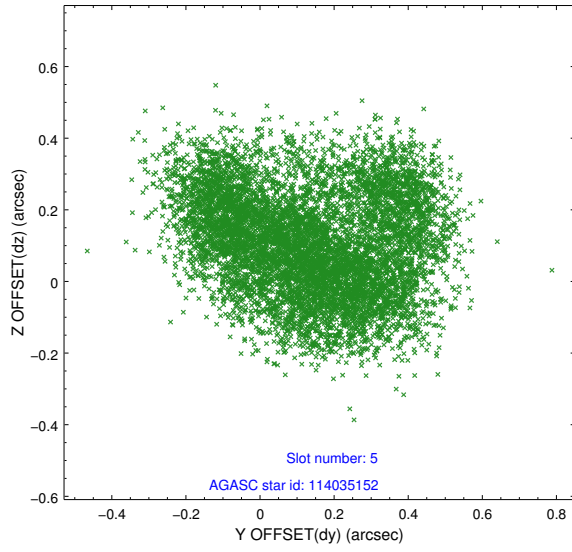
2.4.1 Slot 3



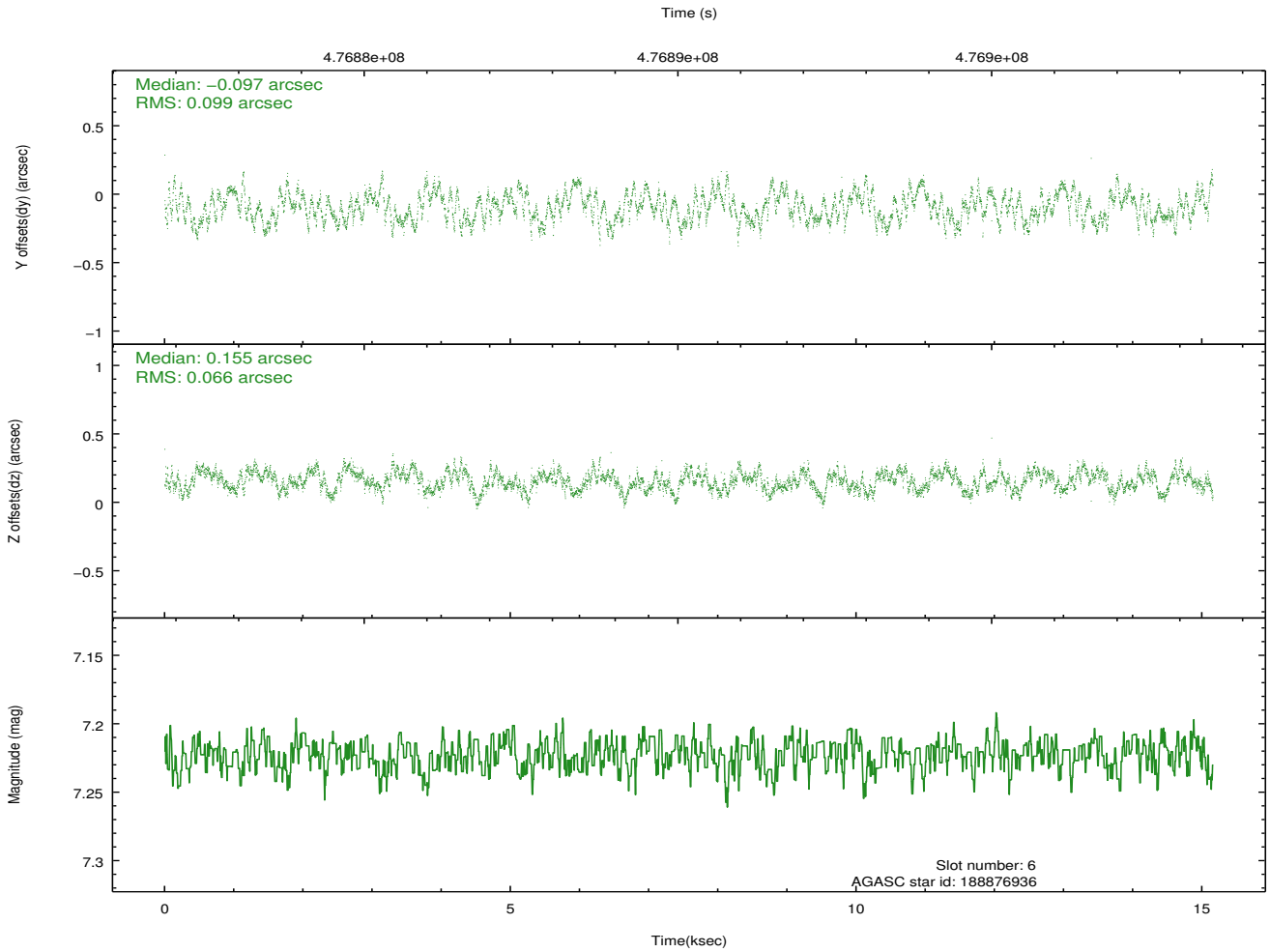
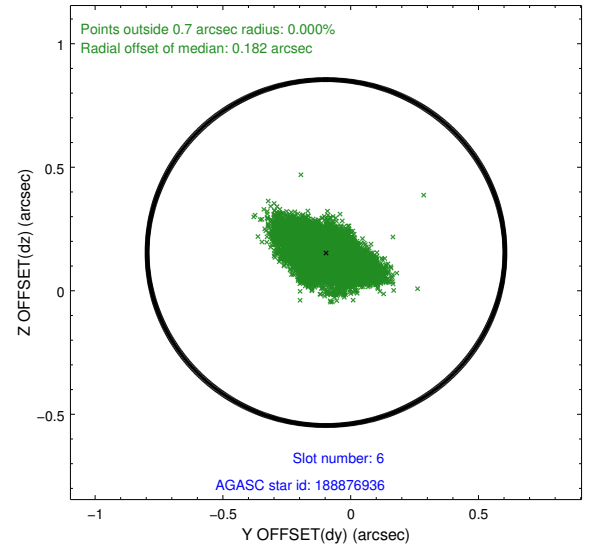
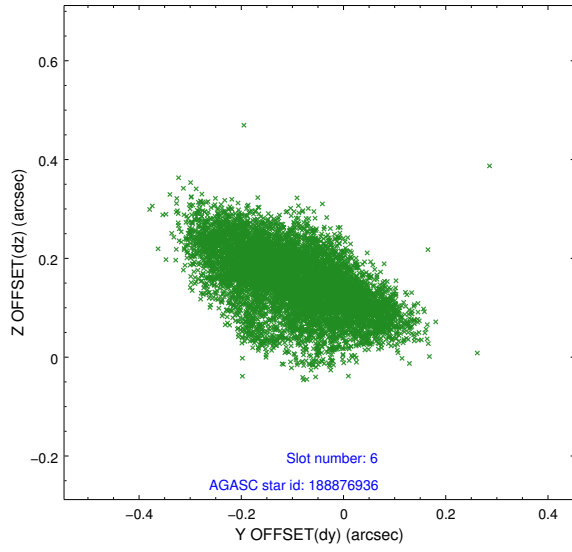
2.4.2 Slot 4



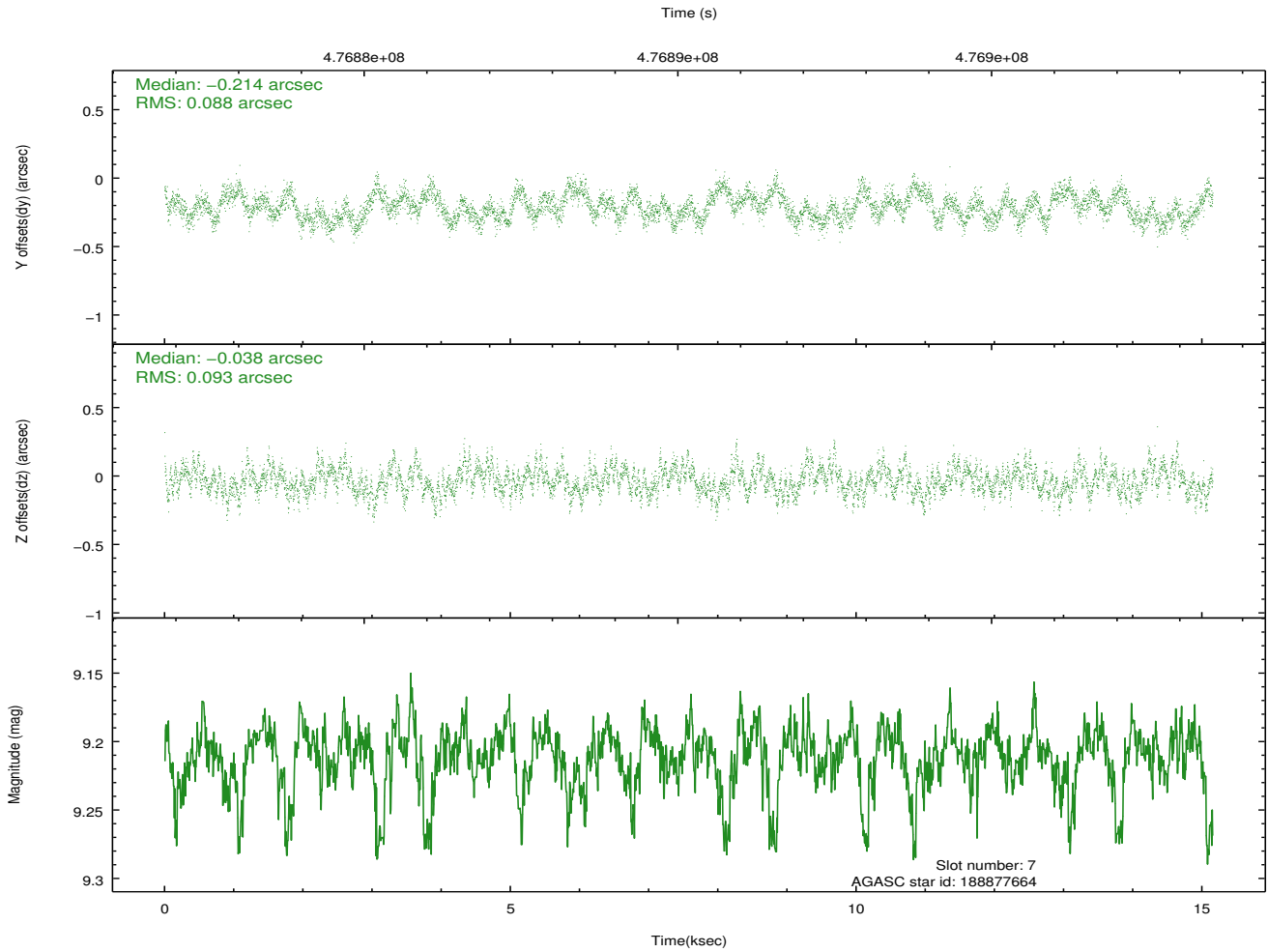
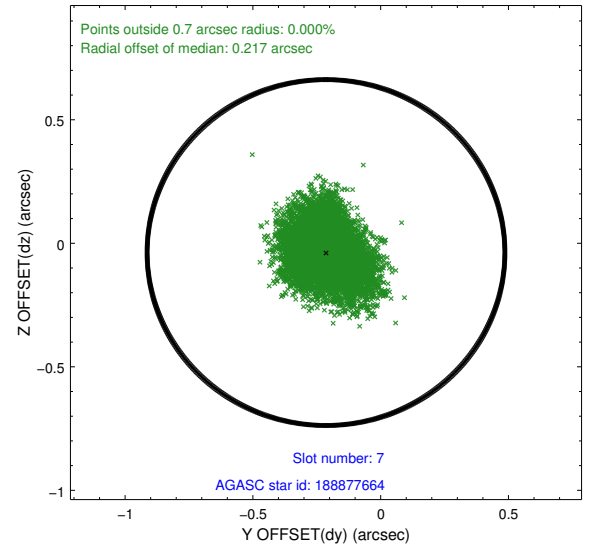
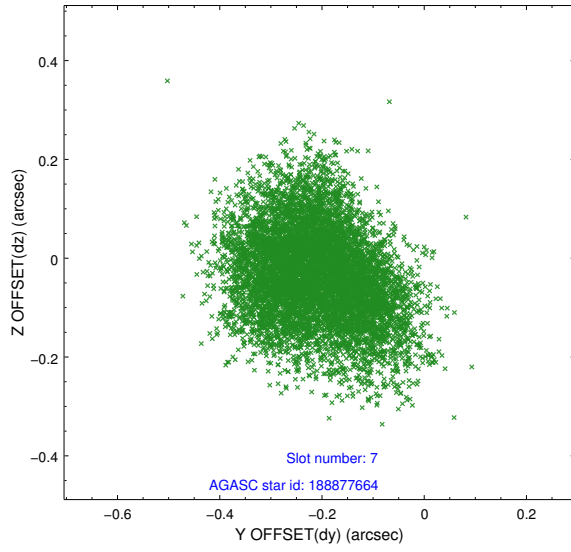
2.4.3 Slot 5



2.4.4 Slot 6

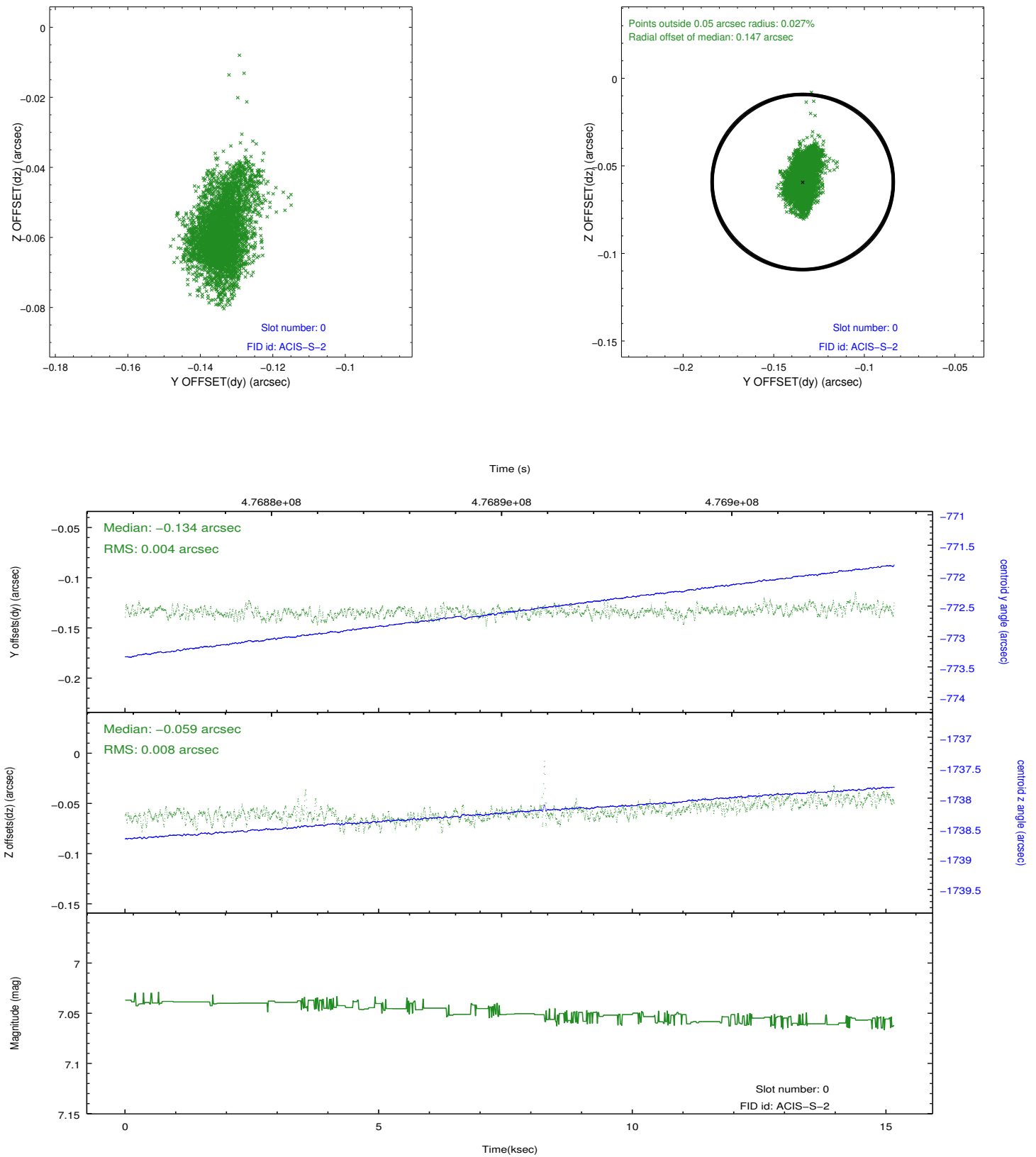


2.4.5 Slot 7

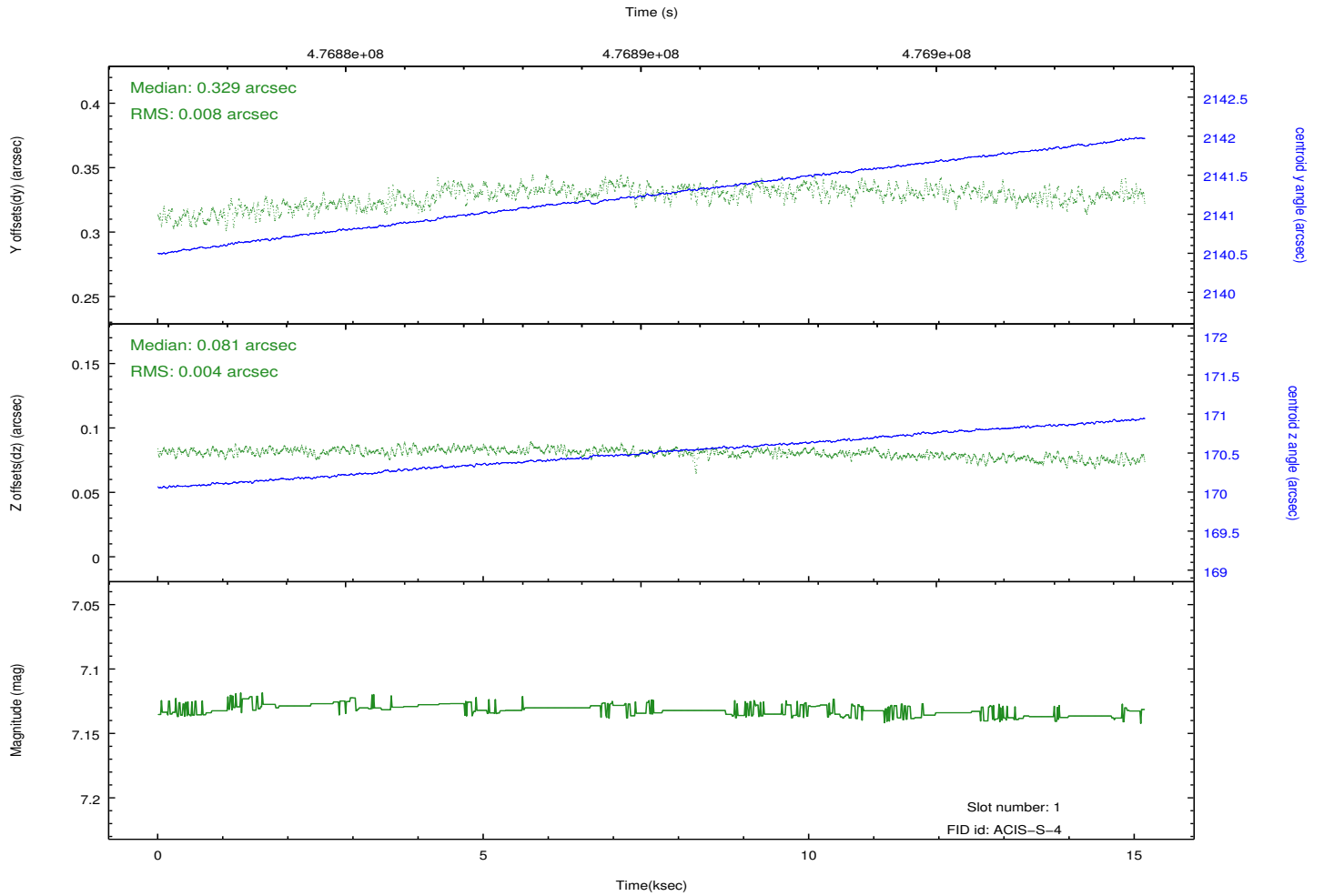
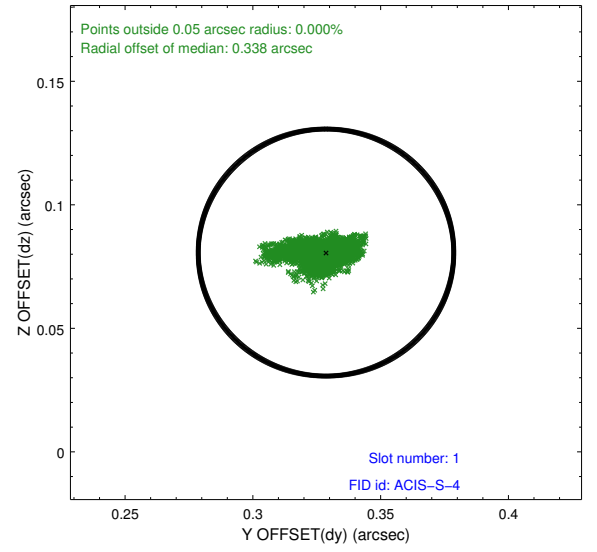
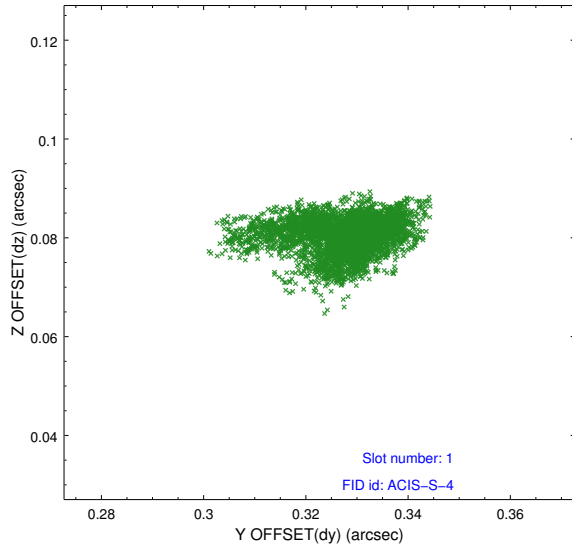


2.5 FID Slots

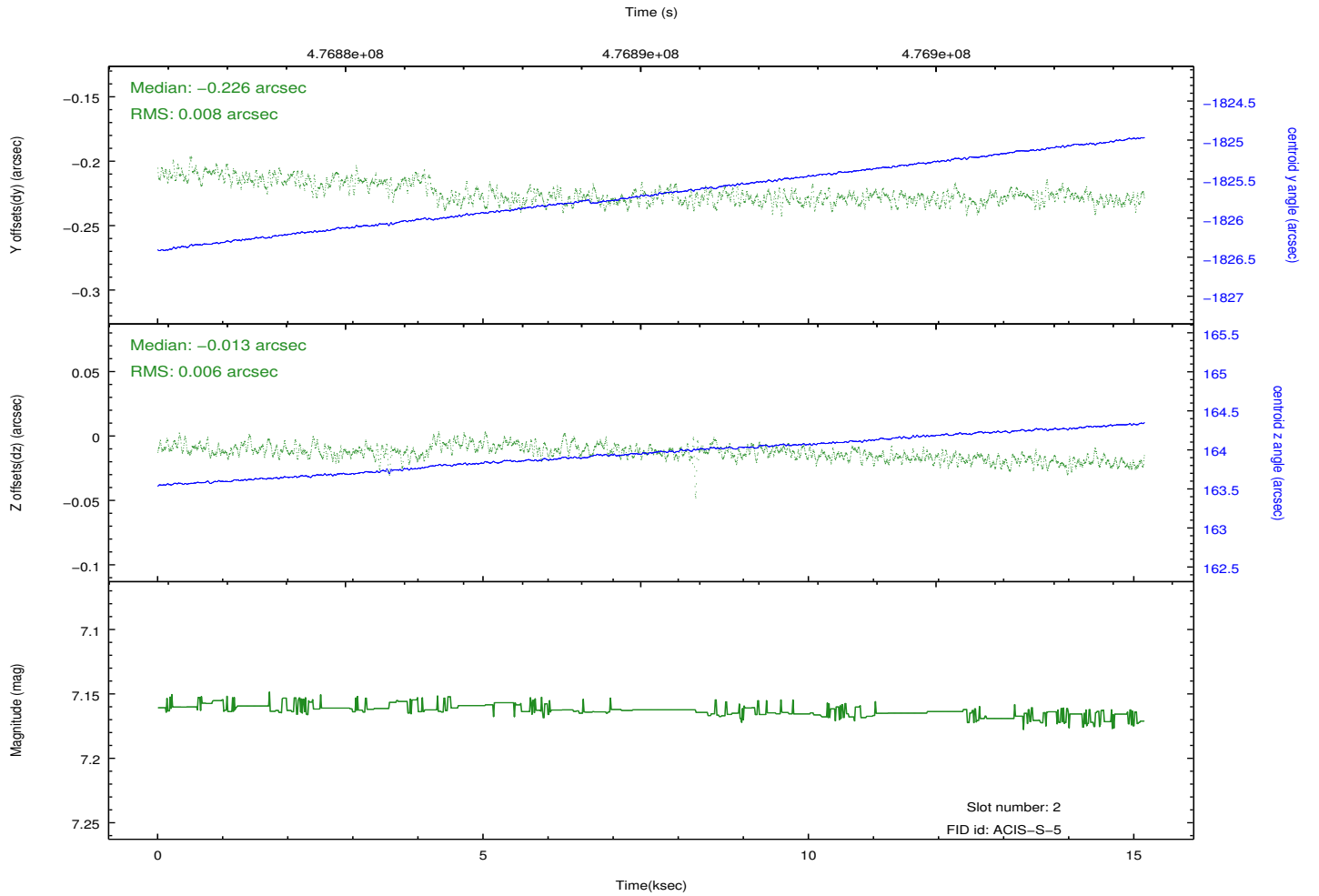
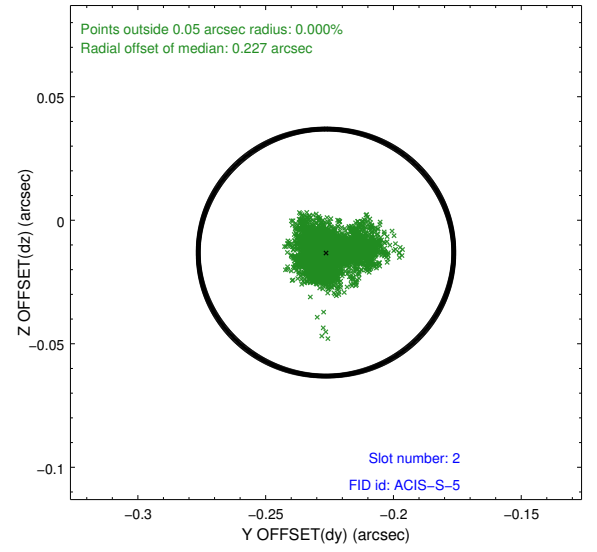
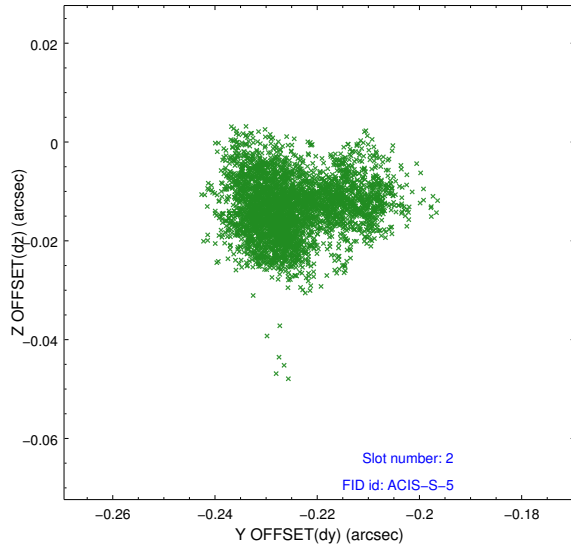
2.5.1 Slot 0



2.5.2 Slot 1



2.5.3 Slot 2



A Summary

A.1 Status

V&V Scientist	Jen Lauer
V&V Date (YYYY-MM-DD)	2014.12.09
V&V Edition	1
V&V Disposition and Status	OK
V&V Charge Time	15.106112733424

A.2 Comments

Optional chip S1 not used.

=====

These data have been reprocessed with new aspect alignment calibration files that correct small mean offsets (up to 0.4 arcsecs) and improve overall astrometric accuracy. The new calibration was determined using data from the time period being reprocessed and was performed using cross-correlation of X-ray sources with radio and optical counterparts.