

V&V Reference Report

L2 ASCDS Version : 8.4.3

Observation 14372 - L2 Version 2
Chandra X-Ray Center

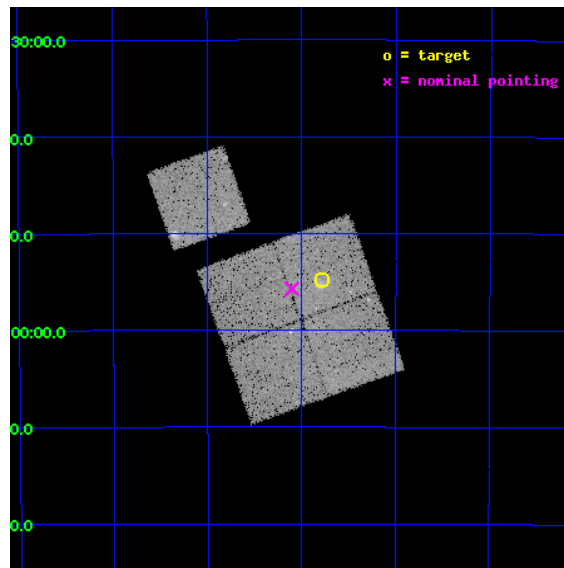
L2 Processing Date : Feb 28 2012

Contents

1	Front	2
2	OBI	3
2.1	OBI	3
2.1.1	Images	3
2.1.2	Bias	3
2.1.3	Parameters	4
2.1.4	Events	4
2.2	Compared Parameters	5
2.3	Aspect	6
2.4	Star Slots	9
2.4.1	Slot 3	9
2.4.2	Slot 4	10
2.4.3	Slot 5	11
2.4.4	Slot 6	12
2.4.5	Slot 7	13
2.5	FID Slots	14
2.5.1	Slot 0	14
2.5.2	Slot 1	15
2.5.3	Slot 2	16
A	Summary	17
A.1	Status	17
A.2	Comments	17

1 Front

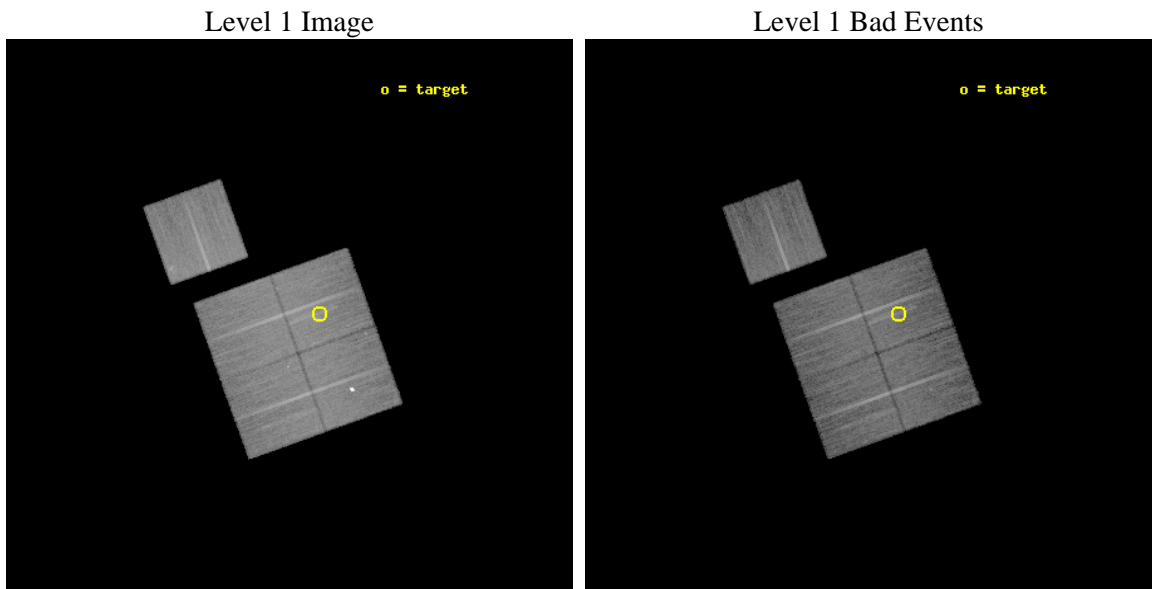
seq_num	801116	Sequence number
obs_id	14372	Observation id
title	Cosmology and Cluster Evolution from the 80 Most Massive Clusters in 2000 deg^2 from the South Pole Telescope Survey	Proposal title
observer	Dr Bradford Benson	Principal investigator
object	SPT-CLJ0441-4854	Source name
dtcycle	0	
cycle	P	events from which exps? Prim/Second/Both
ra_targ	70.447083	Observer's specified target RA [deg]
dec_targ	-48.9125	Observer's specified target Dec [deg]
ra_nom	70.526102531172	Nominal RA [deg]
dec_nom	-48.928789439593	Nominal Dec [deg]
roll_nom	340.26822680088	Nominal Roll [deg]
revision	2	Processing version of data
ontime	24101.271903157	Sum of GTIs [s]
livetime	23786.371042644	Livetime [s]
ontime0	24101.14876318	Sum of GTIs [s]
ontime1	24098.048802793	Sum of GTIs [s]
ontime2	24101.230813205	Sum of GTIs [s]
ontime3	24101.271903157	Sum of GTIs [s]
ontime6	24104.248733521	Sum of GTIs [s]
l2events	74961	Number of level 2 events



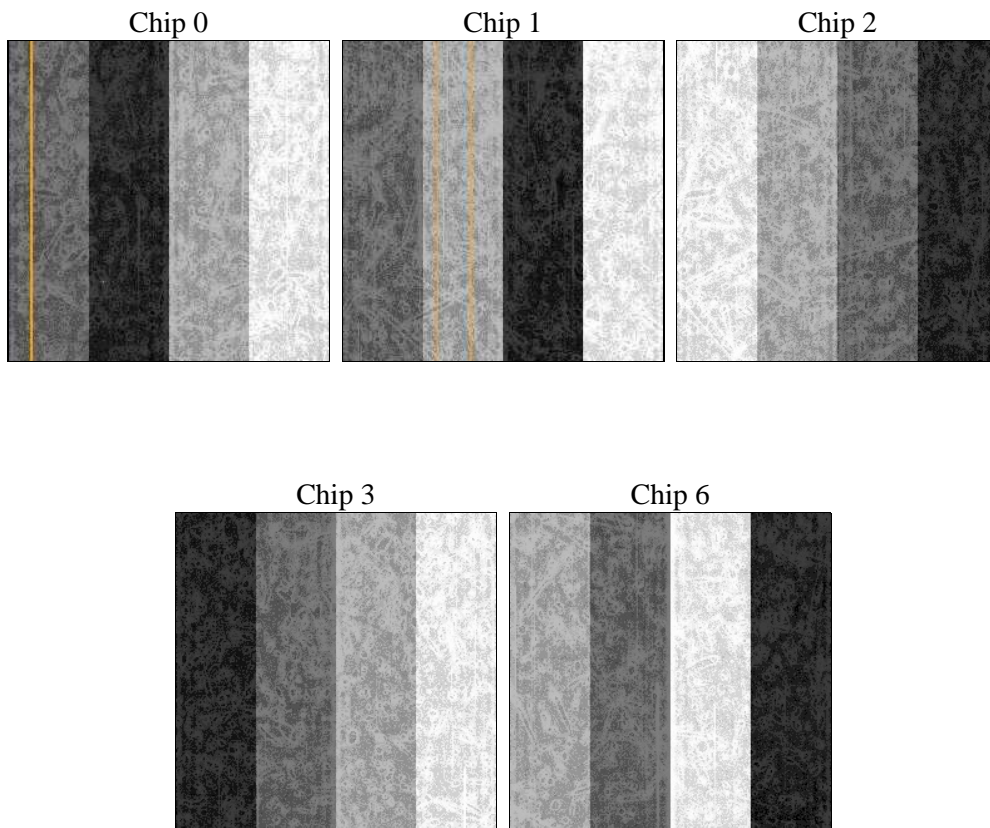
2 OBI

2.1 OBI

2.1.1 Images



2.1.2 Bias



2.1.3 Parameters

obi_num	0	Obi number	sched_exp_time	24050.776000	[s] Scheduled observation exposure time
ascdsver	8.4.3	Processing system revision	ontime	24101.271903157	Sum of GTIs [s]
caldbver	4.4.8	 	ontime0	24101.14876318	Sum of GTIs [s]
date	2012-02-28T03:44:23	Date and time of file creation	ontime1	24098.048802793	Sum of GTIs [s]
revision	2	Processing version of data	ontime2	24101.230813205	Sum of GTIs [s]
			ontime3	24101.271903157	Sum of GTIs [s]
			ontime6	24104.248733521	Sum of GTIs [s]
			l1events	758436	Number of level 1 events

2.1.4 Events

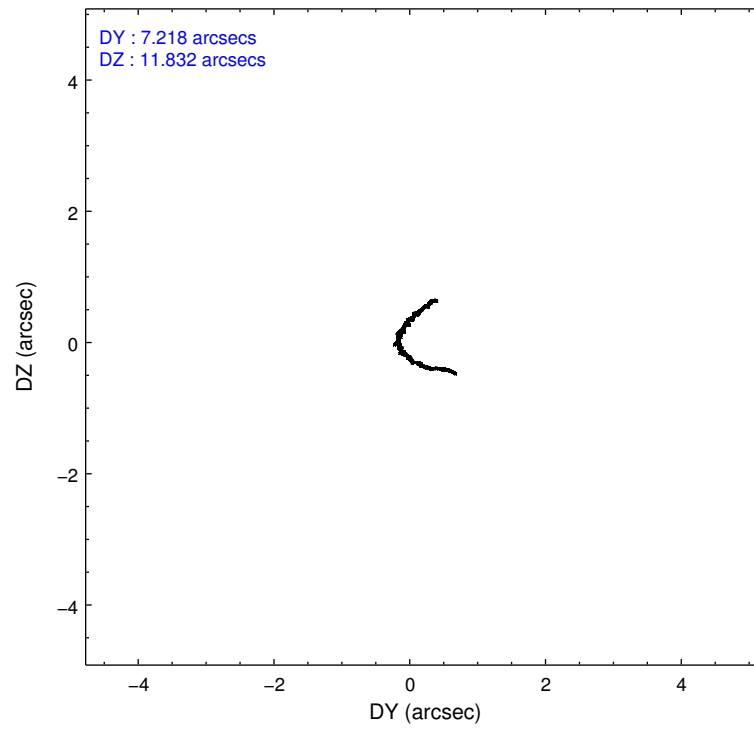
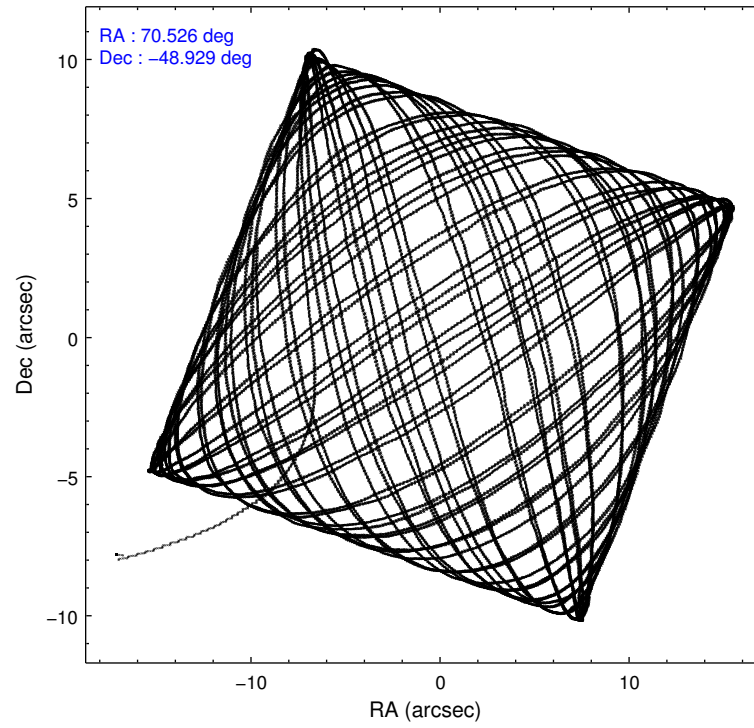
	ccd 0	ccd 1	ccd 2	ccd 3	ccd 6
level 1 events	143757	157235	153433	151362	152649
rejected events	126342	124083	136916	133667	134307
rejected %	87%	78%	89%	88%	87%

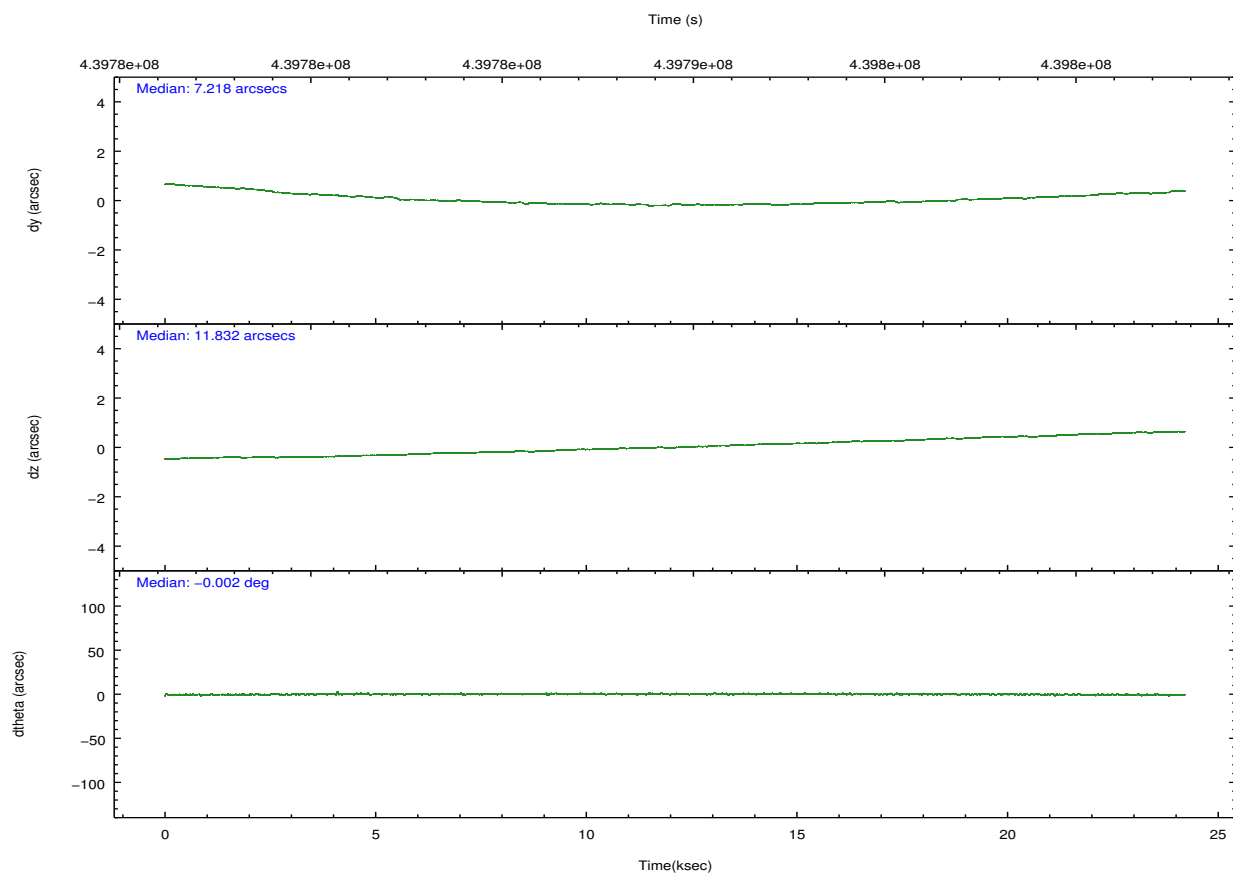
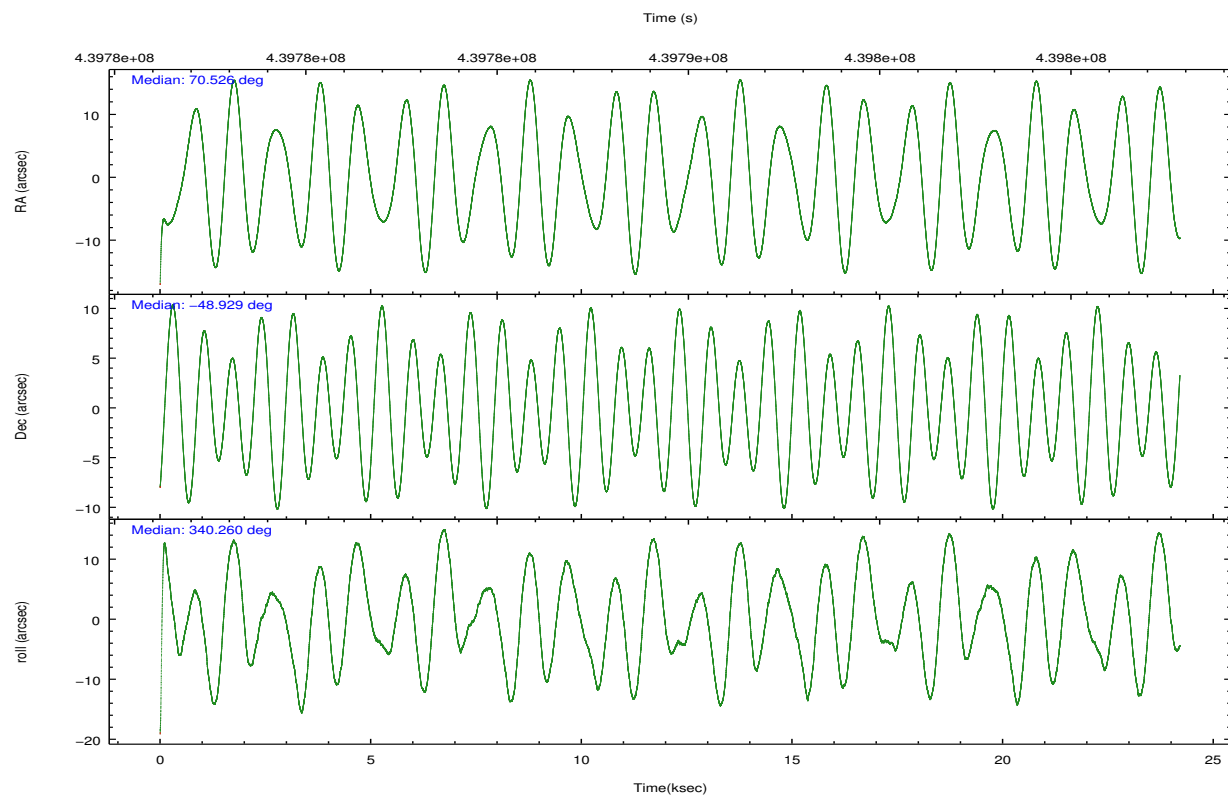
	ccd 0	ccd 1	ccd 2	ccd 3	ccd 6
grade 0 events	6171	6578	5985	6695	6631
	4%	4%	3%	4%	4%
grade 1 events	86	66	93	109	86
	0%	0%	0%	0%	0%
grade 2 events	4266	18706	4033	3877	4055
	2%	11%	2%	2%	2%
grade 3 events	1862	1930	1714	1823	1850
	1%	1%	1%	1%	1%
grade 4 events	1709	1853	1743	1815	1829
	1%	1%	1%	1%	1%
grade 5 events	6259	7015	6257	7326	7077
	4%	4%	4%	4%	4%
grade 6 events	3417	4094	3048	3487	3984
	2%	2%	1%	2%	2%
grade 7 events	119987	116993	130560	126230	127137
	83%	74%	85%	83%	83%

2.2 Compared Parameters

Parameter	Planned	Actual	Parameter	Planned	Actual
Instrument	ACIS	ACIS	Obspar format version number	7	7
Detector	ACIS-01236	ACIS-01236	Obspar file type	PREDICTED	ACTUAL
Grating	NONE	NONE	Obspar update status	NONE	UPDATED
Data mode	VFAINT	VFAINT	CCD I0 on	Y	Y
Observation mode	POINTING	POINTING	CCD I1 on	Y	Y
[deg] Pointing RA	70.484966	70.52610253117193	CCD I2 on	Y	Y
[deg] Pointing Dec	-48.933790	-48.92878943959253	CCD I3 on	Y	Y
[deg] Pointing Roll	340.028548	340.2682268008848	CCD S0 on	N	N
[mm] SIM focus pos	-0.782348	-0.7809083437167272	CCD S1 on	N	N
[mm] SIM defocus	0	0.001439871863259334	CCD S2 on	O1	Y
[mm] SIM translation stage pos	-225.842463	-225.8458576473255	CCD S3 on	N	N
[mm] SIM translation stage offset	-7.75	-7.746595355604228	CCD S4 on	N	N
[s] Observation start time (MET)	439777566.184000	439776357.61592	CCD S5 on	N	N
Observation start date	2011-12-09T00:25:00	2011-12-09T00:05:57	Number of optional ACIS chips dropped	0	0
[s] Observation end time (MET)	439801617.184000	439801851.92976	On-chip summing requested	N	N
Observation end date	2011-12-09T07:05:51	2011-12-09T07:10:51	Subarray requested	NONE	NONE
Read mode	TIMED	TIMED	Alternating exposures requested	N	N
			[s] Primary exposure time	0.000000	3.1

2.3 Aspect



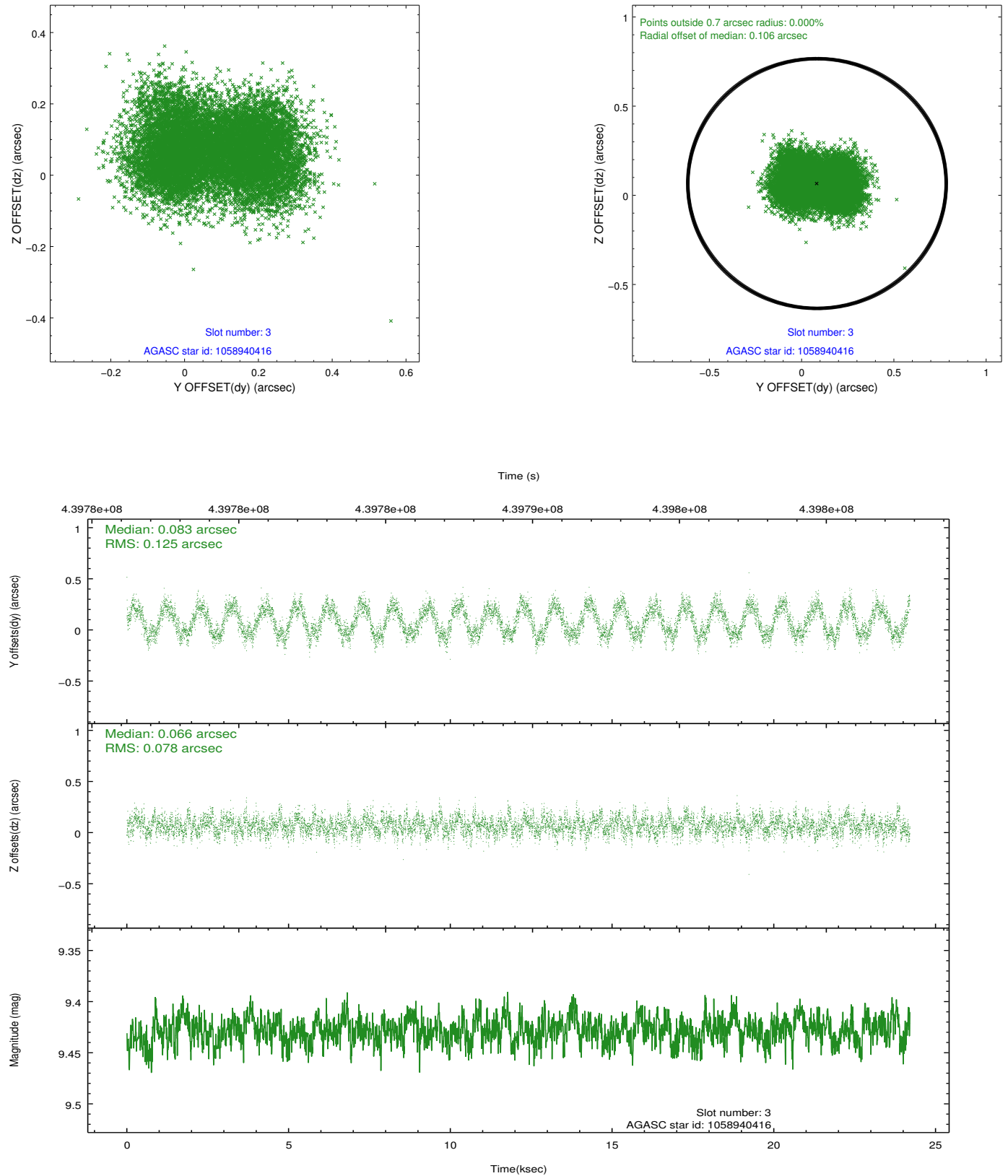


Slot Statistics

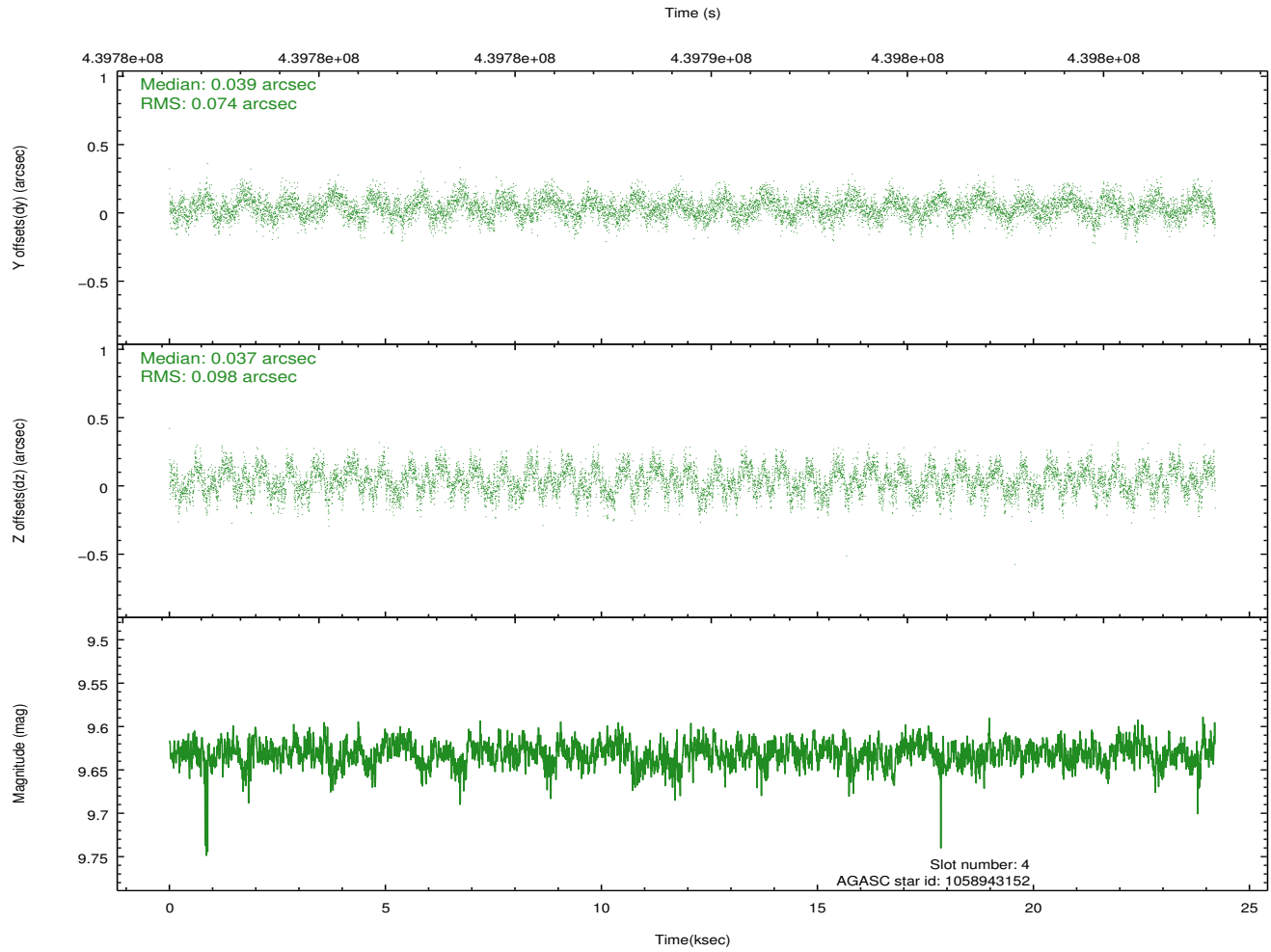
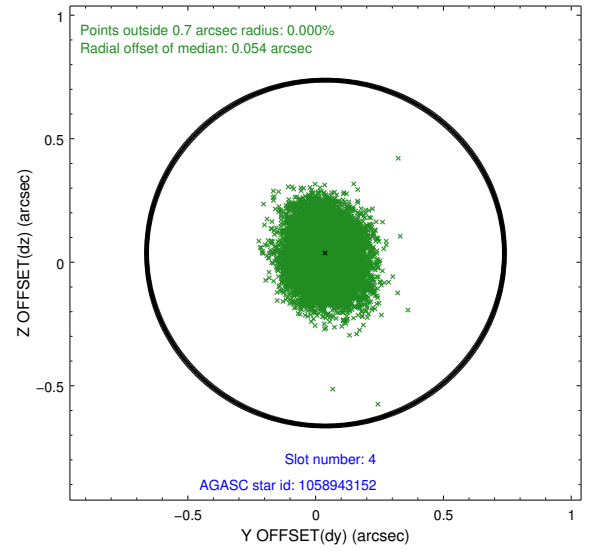
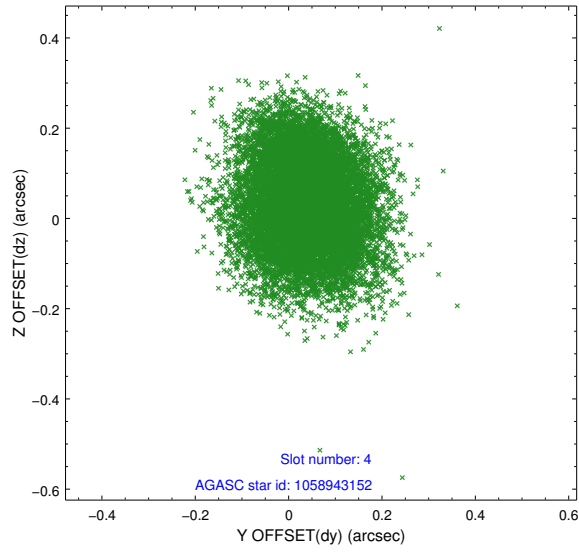
slot	status	id	mag	n_pts	med_dy	med_dz	dr1	dr2	ra	dec	mean_y	mean_z
0	FID	ACIS-I-1	7.14	5904	0.171	-0.166	0.010	0.017	0.000000	0.000000	932.40	-994.59
1	FID	ACIS-I-5	7.13	5905	-0.272	0.140	0.008	0.014	0.000000	0.000000	-1816.06	903.13
2	FID	ACIS-I-6	7.15	5905	0.010	0.096	0.012	0.021	0.000000	0.000000	397.67	1547.73
3	GUIDE	1058940416	9.43	11800	0.083	0.066	0.162	0.238	69.423334	-49.218347	-1989.74	-1831.89
4	GUIDE	1058943152	9.63	11802	0.039	0.037	0.133	0.207	70.556842	-49.380673	708.92	-1454.36
5	GUIDE	1058944440	8.82	11802	0.089	0.020	0.080	0.125	70.407720	-48.487834	-721.26	1446.01
6	GUIDE	1058944968	9.53	11795	-0.129	-0.134	0.124	0.210	70.820940	-48.883196	685.98	441.47
7	GUIDE	1058940064	6.76	11808	-0.101	0.013	0.090	0.145	70.142591	-48.538241	-1252.69	1058.26

2.4 Star Slots

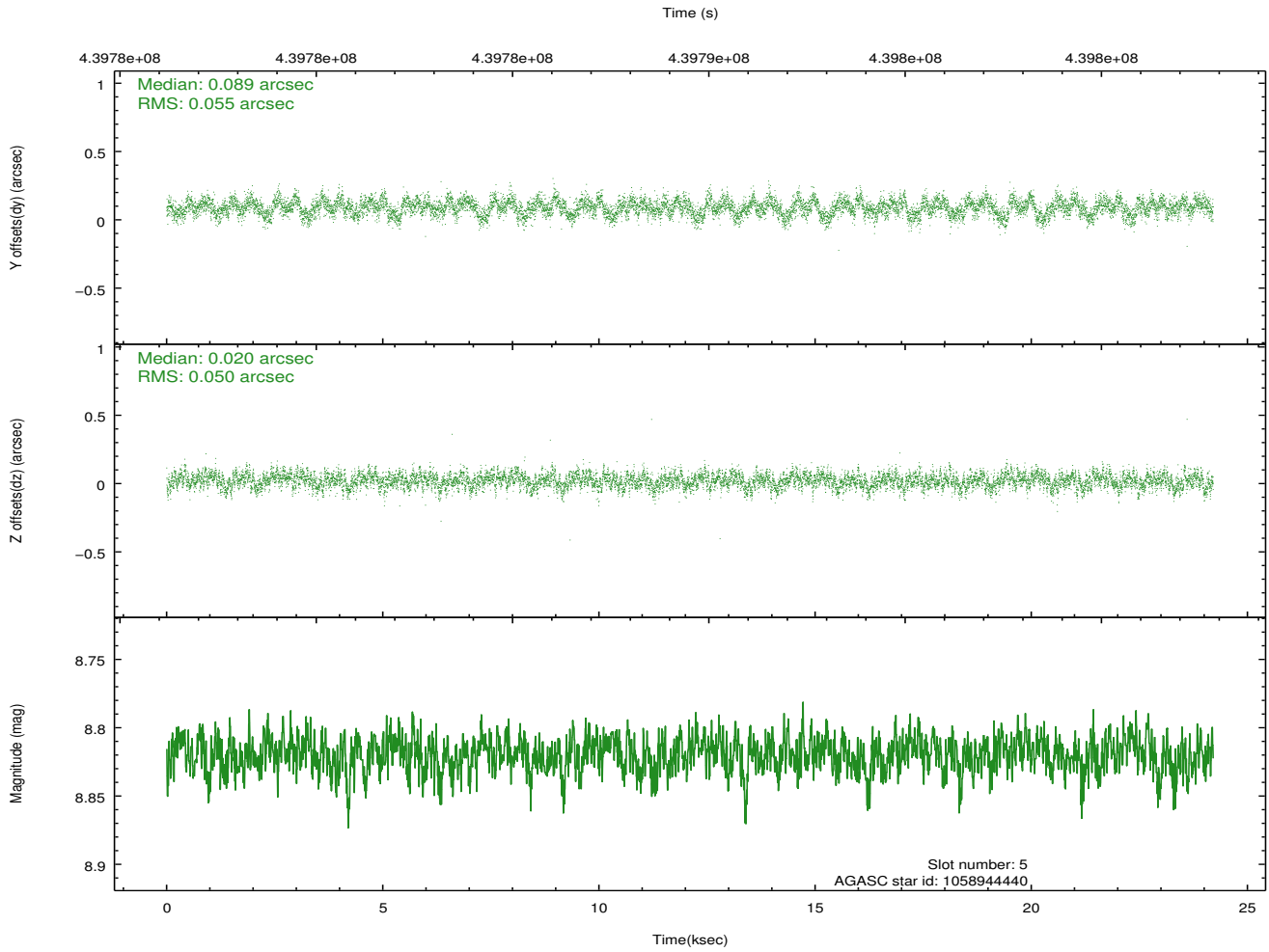
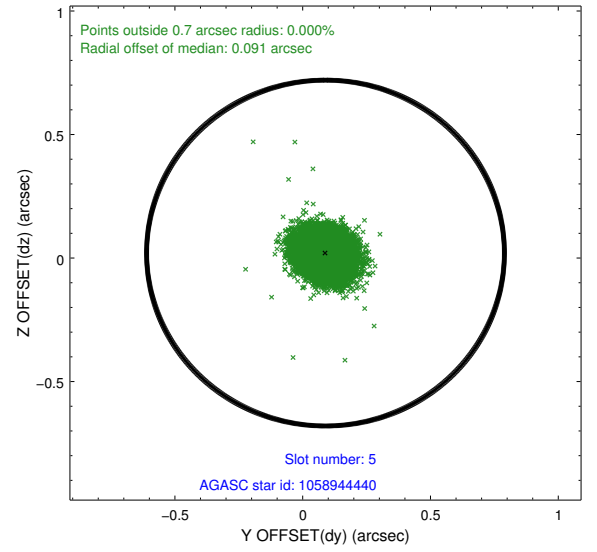
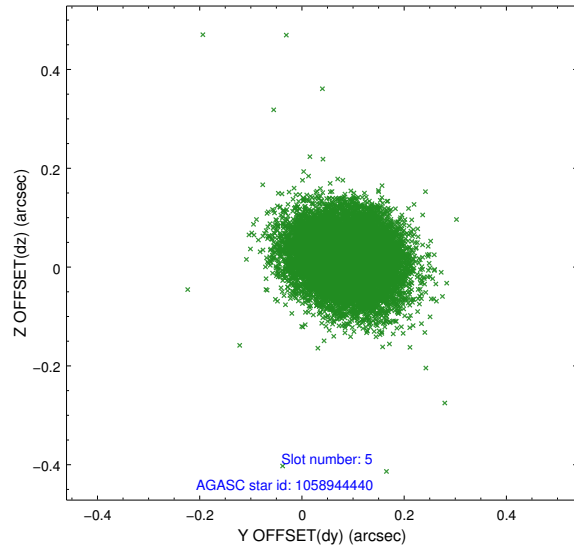
2.4.1 Slot 3



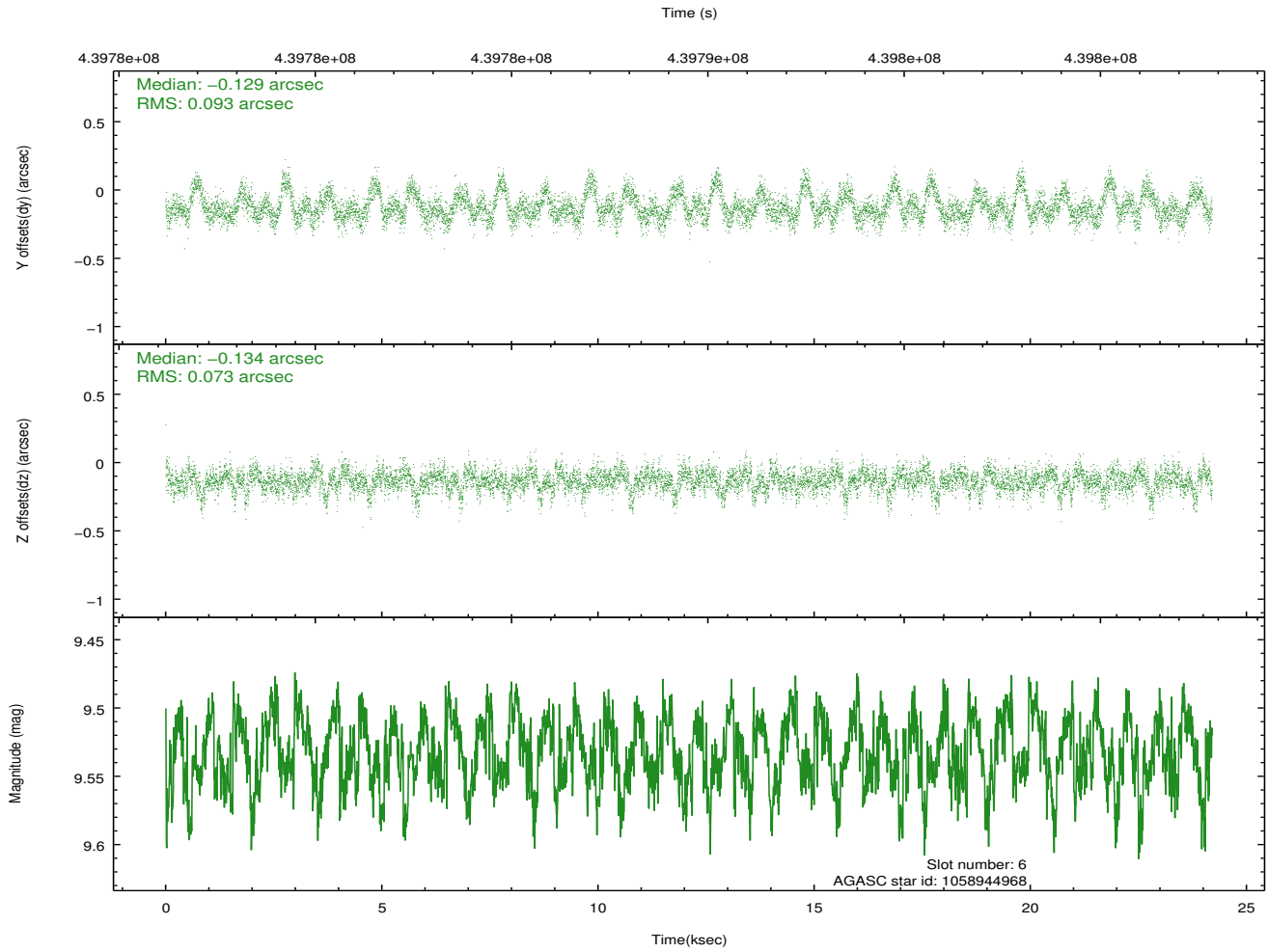
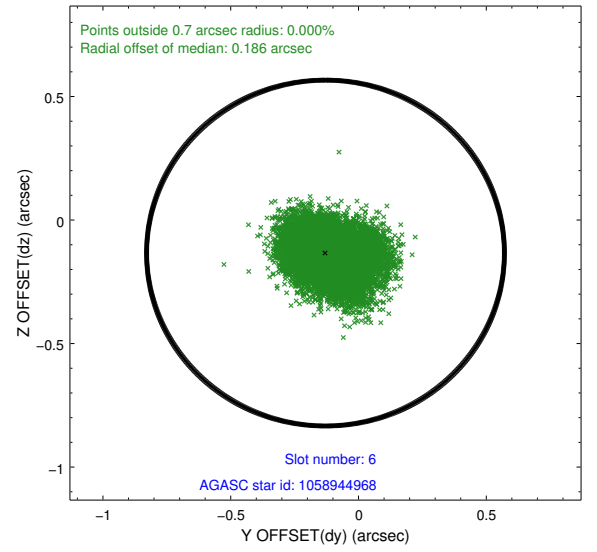
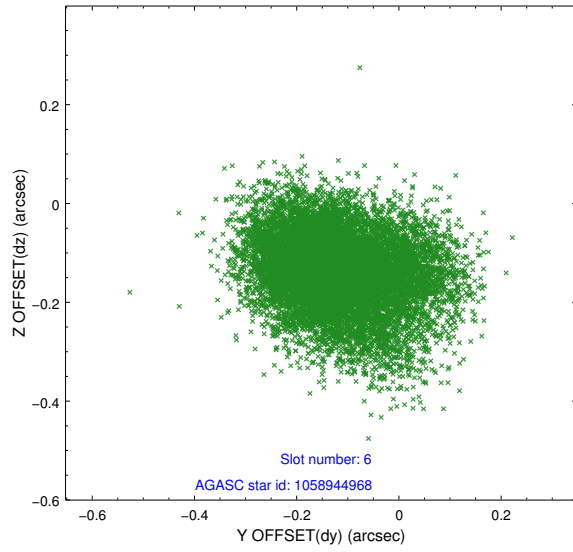
2.4.2 Slot 4



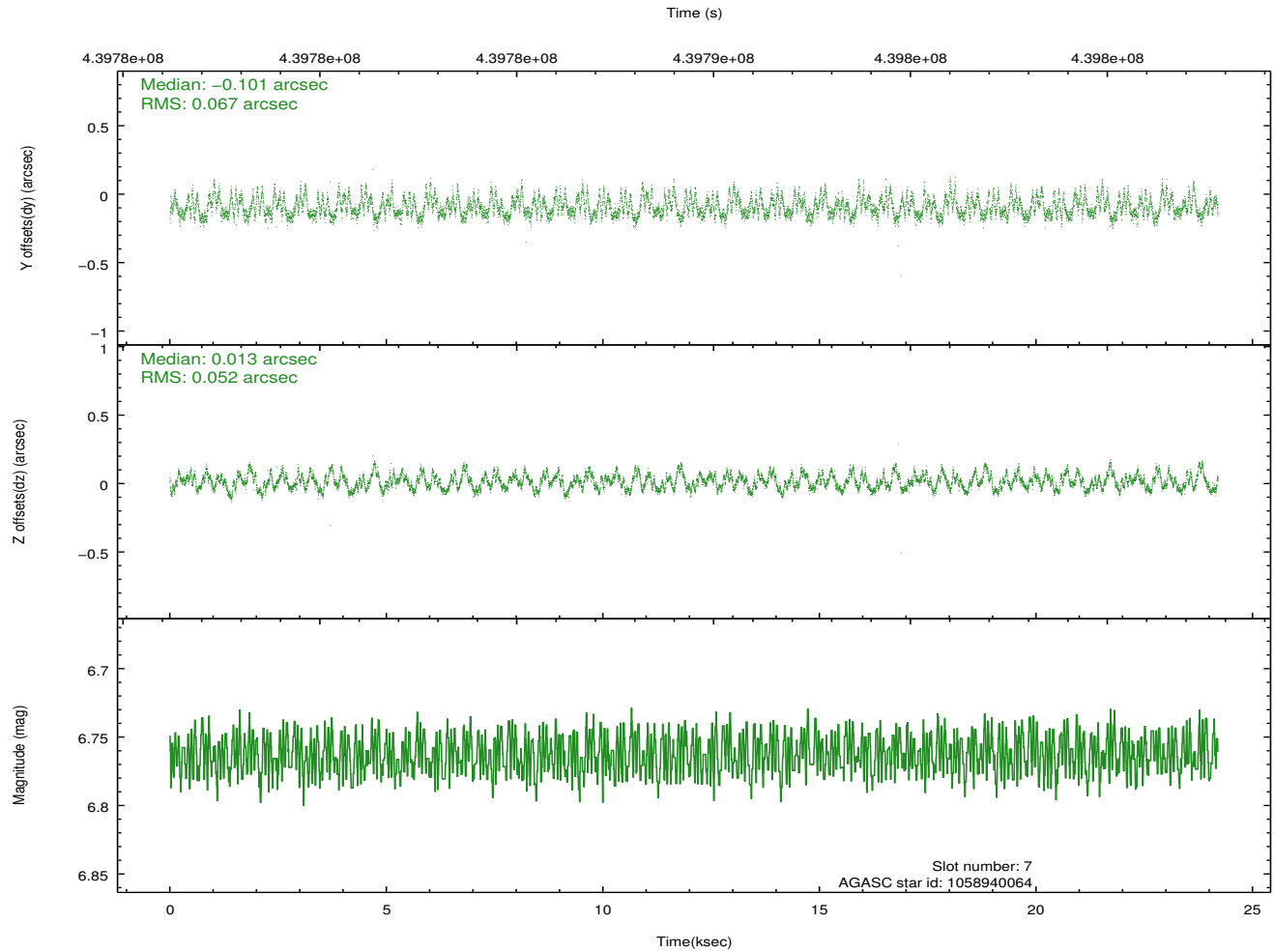
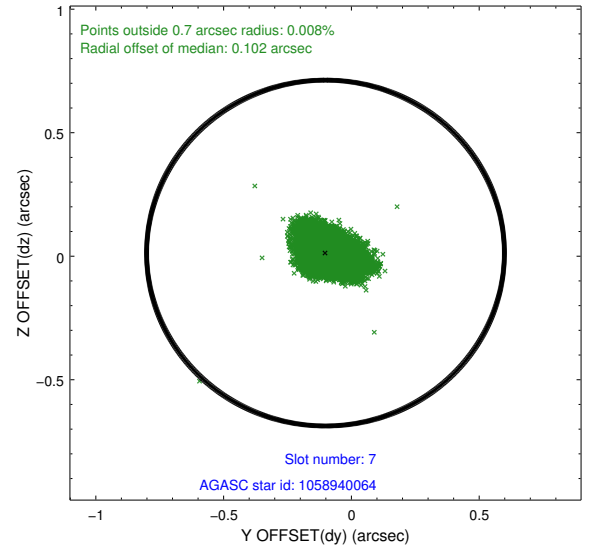
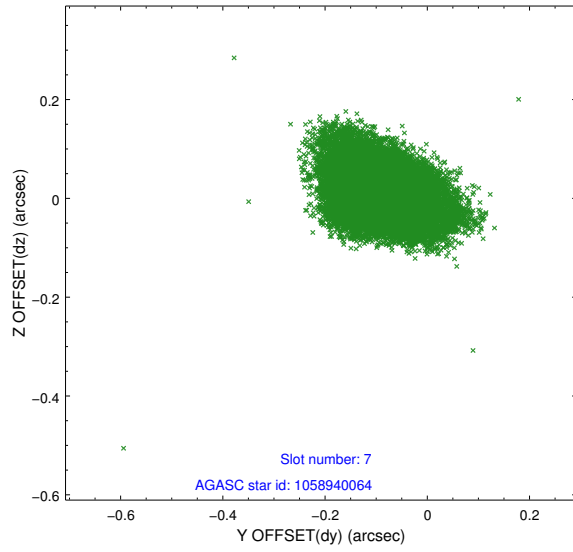
2.4.3 Slot 5



2.4.4 Slot 6

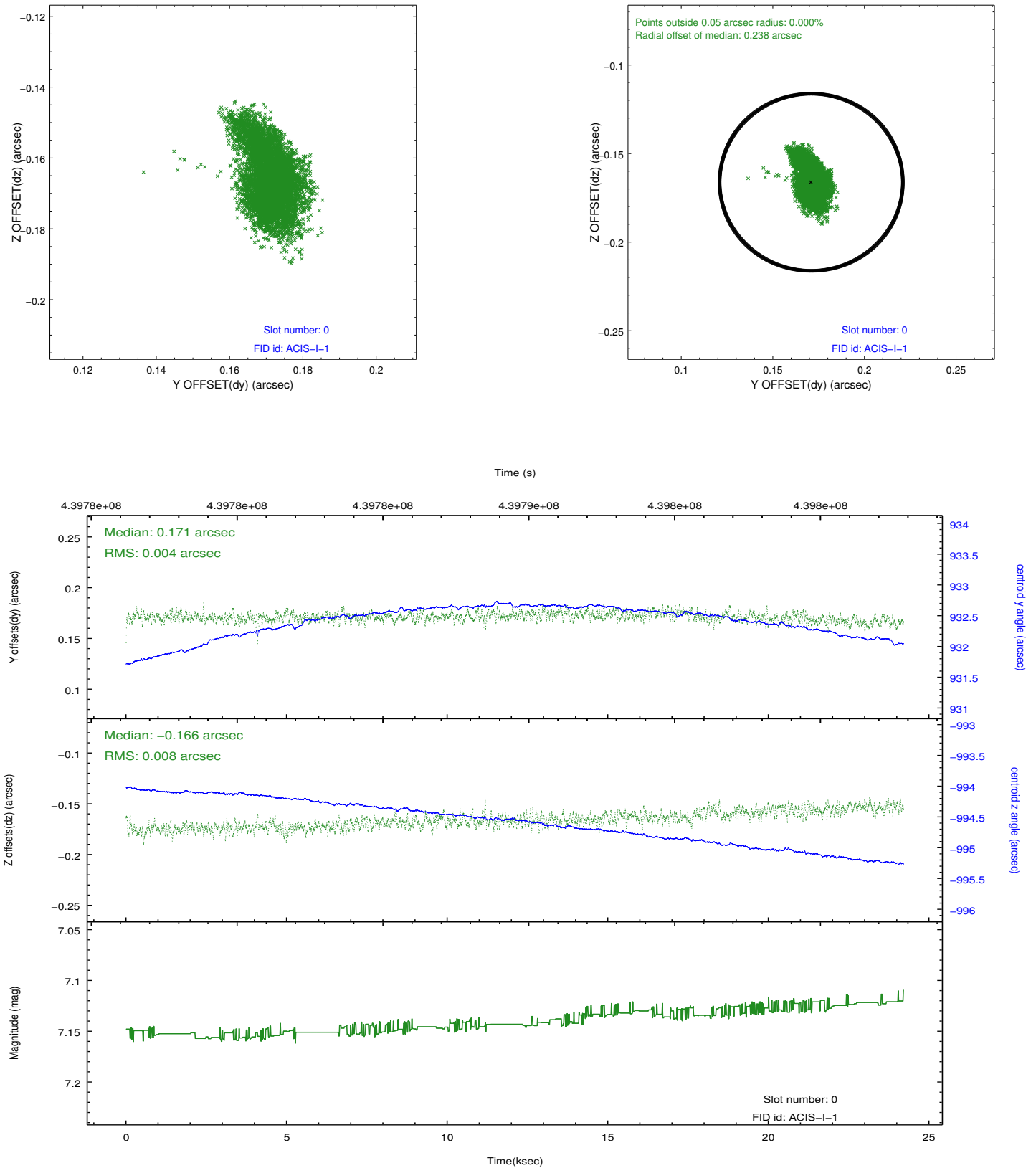


2.4.5 Slot 7

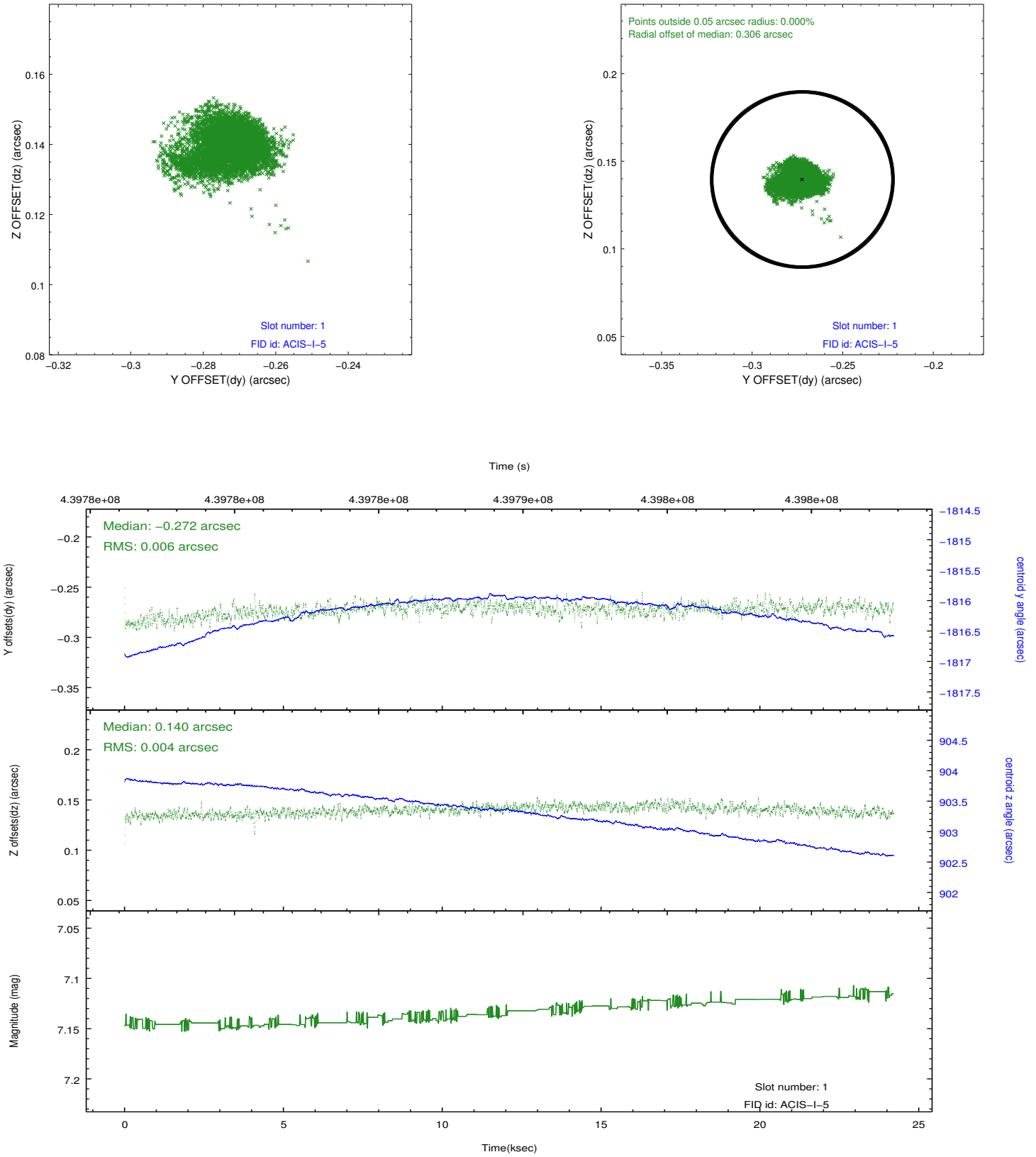


2.5 FID Slots

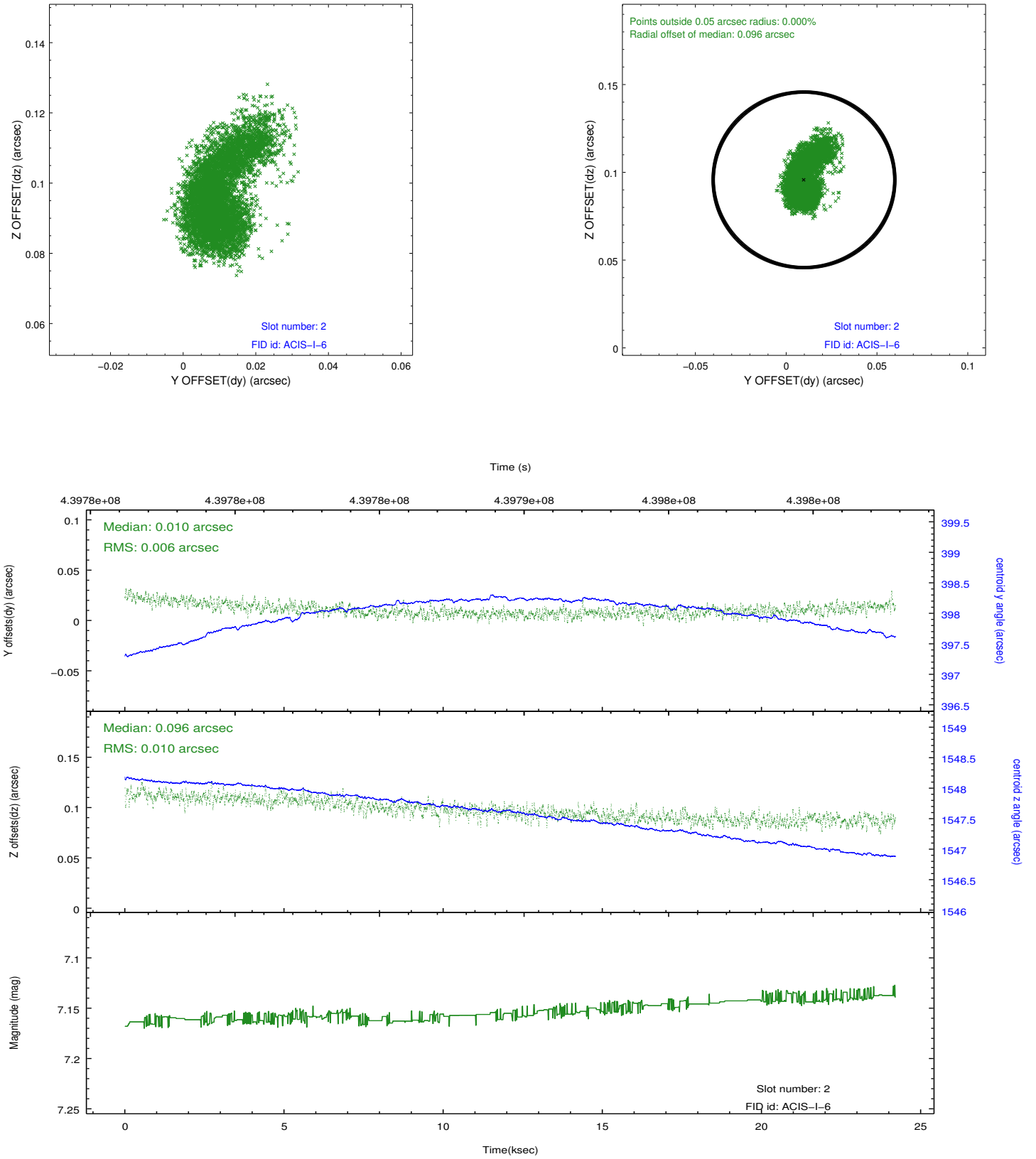
2.5.1 Slot 0



2.5.2 Slot 1



2.5.3 Slot 2



A Summary

A.1 Status

V&V Scientist	Jen Lauer
V&V Date (YYYY-MM-DD)	2012.02.29
V&V Edition	1
V&V Disposition and Status	OK
V&V Charge Time	24.101271900713

A.2 Comments