

# V&V Reference Report

## L2 ASCDS Version : 8.4.5

Observation 142 - L2 Version 5  
Chandra X-Ray Center

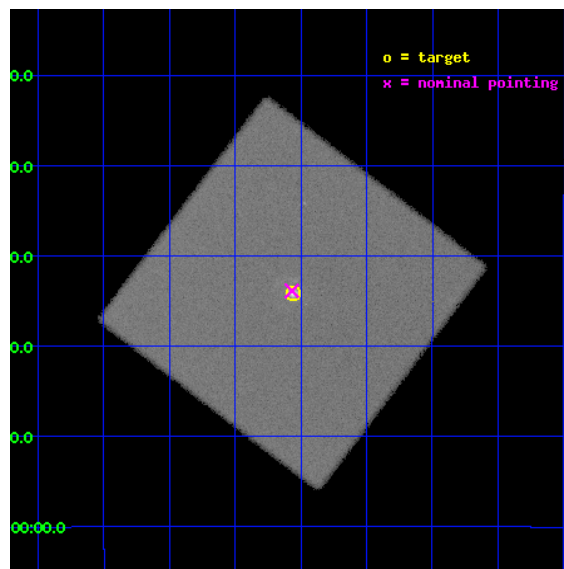
L2 Processing Date : Aug 23 2012

## Contents

<b>1</b>	<b>Front</b>	<b>2</b>
<b>2</b>	<b>OBI</b>	<b>3</b>
2.1	OBI . . . . .	3
2.1.1	Images . . . . .	3
2.1.2	Parameters . . . . .	4
2.1.3	Events . . . . .	4
2.2	Compared Parameters . . . . .	5
2.3	Aspect . . . . .	6
2.4	Star Slots . . . . .	9
2.4.1	Slot 3 . . . . .	9
2.4.2	Slot 4 . . . . .	10
2.4.3	Slot 5 . . . . .	11
2.4.4	Slot 6 . . . . .	12
2.5	FID Slots . . . . .	13
2.5.1	Slot 0 . . . . .	13
2.5.2	Slot 1 . . . . .	14
2.5.3	Slot 2 . . . . .	15
<b>A</b>	<b>Summary</b>	<b>16</b>
A.1	Status . . . . .	16
A.2	Comments . . . . .	16

# 1 Front

seq_num	590010	Sequence number
obs_id	142	Observation id
title	HRC RESPONSE TO CONTINUUM SOURCE.	Proposal title
observer	Dr. CXC Calibration	Principal investigator
object	G21.5-0.9	Source name
ra_targ	278.389583	Observer's specified target RA [deg]
dec_targ	-10.568528	Observer's specified target Dec [deg]
ra_nom	278.39199345052	Nominal RA [deg]
dec_nom	-10.564545970559	Nominal Dec [deg]
roll_nom	82.347949182457	Nominal Roll [deg]
revision	5	Processing version of data
ontime	30488.882362232	[s]
livetime	30321.797270638	On-time multiplied by DTCOR
l2events	806218	Number of level 2 events

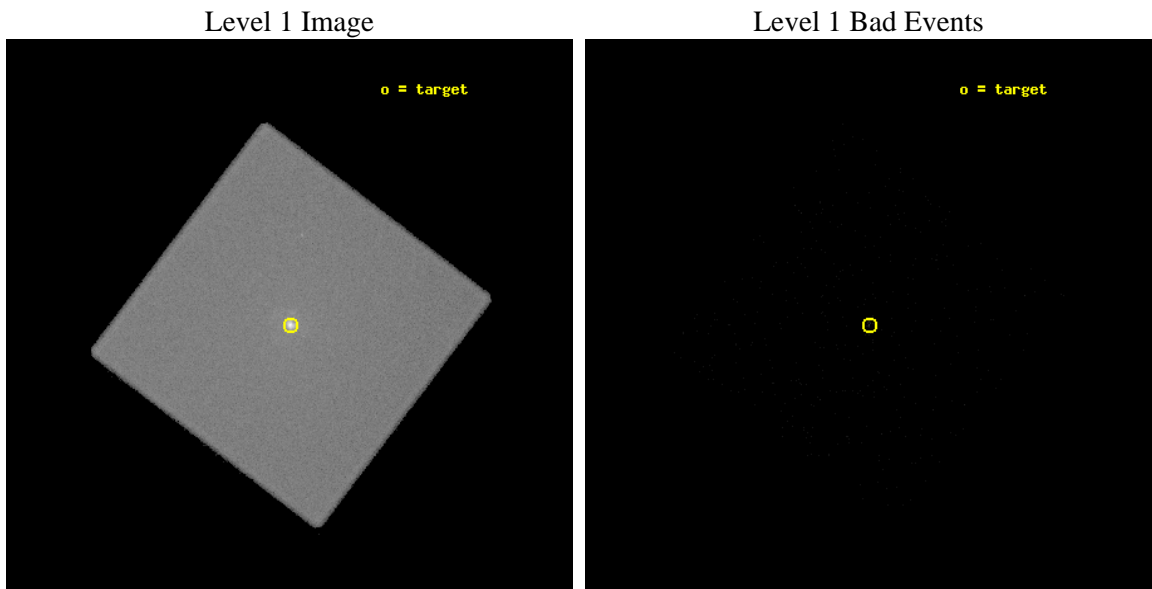




## 2 OBI

### 2.1 OBI

#### 2.1.1 Images



### 2.1.2 Parameters

obi_num	0	Obi number	sched_exp_time	30000.000000	[s] Scheduled observation exposure time
ascdsver	8.4.5	Processing system revision	ontime	30488.882362232	[s]
caldsver	4.5.1.1	&#160	l1events	1263765	Number of level 1 events
date	2012-08-23T19:21:48	Date and time of file creation			
revision	5	Processing version of data			

### 2.1.3 Events

#### Level 1 Events

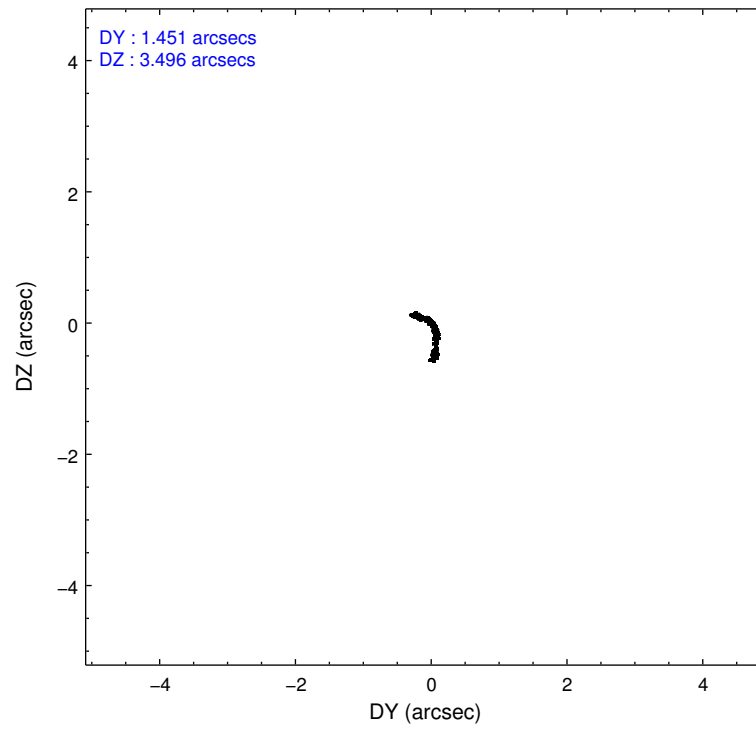
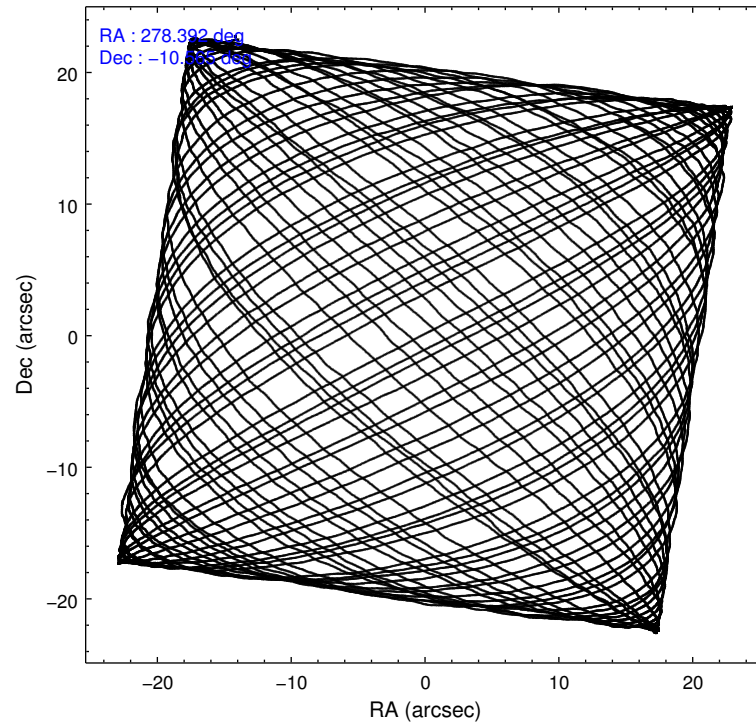
	<b>segment 0</b>
level 1 events	1263765
rejected events	28609
rejected %	2%

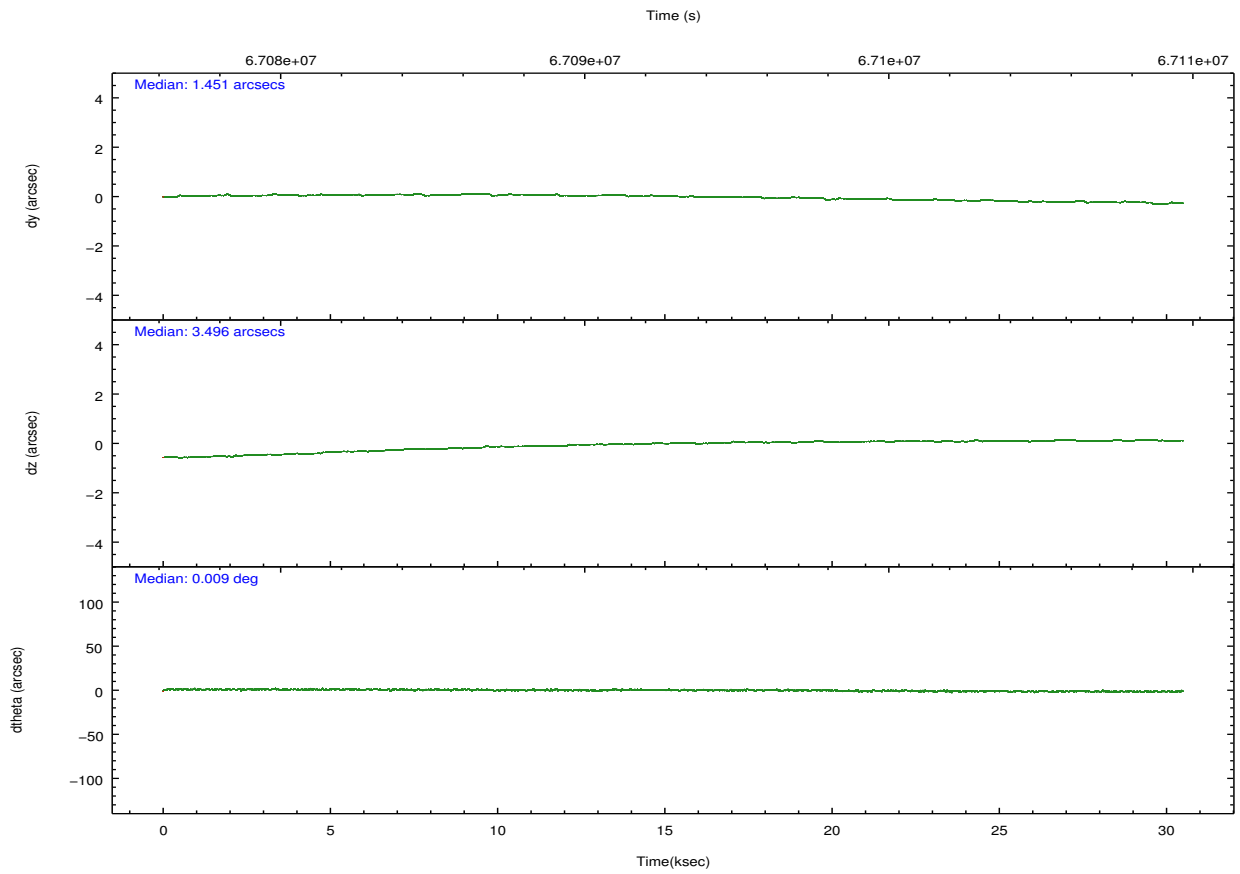
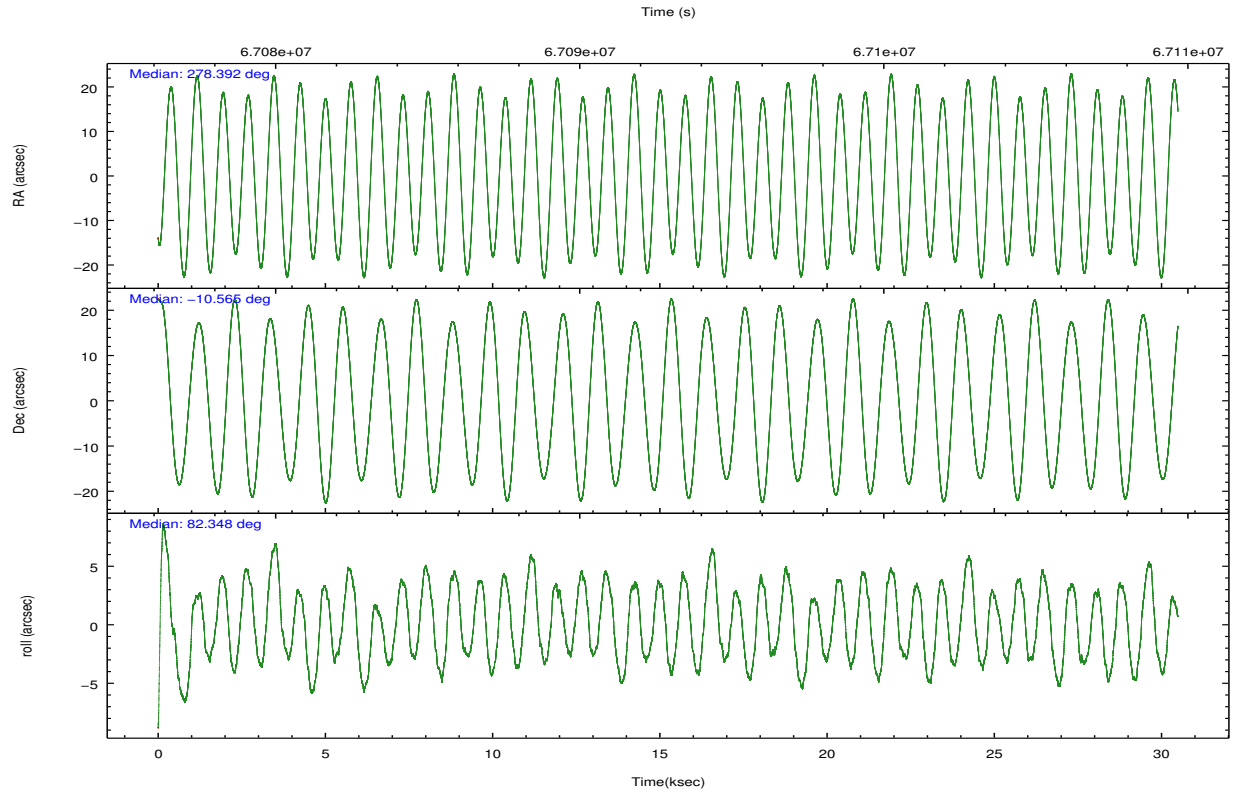
## 2.2 Compared Parameters

Parameter	Planned	Actual
Instrument	HRC	HRC
Detector	HRC-I	HRC-I
Grating	NONE	NONE
Data mode	OBSERVING	OBSERVING
Observation mode	POINTING	POINTING
[deg] Pointing RA	278.402801	278.3919934505199
[deg] Pointing Dec	-10.589752	-10.56454597055927
[deg] Pointing Roll	82.445433	82.34794918245669
[mm] SIM focus pos	-1.040293	-1.038866356238299
[mm] SIM defocus	0	0.001426264420575141
[mm] SIM translation stage pos	126.985494	126.9829799899862
[mm] SIM translation stage offset	0	0.002508901615314585
[s] Observation start time (MET)	67078150.184000	67077095.868515
Observation start date	2000-02-16T08:48:06	2000-02-16T08:31:35
[s] Observation end time (MET)	67108150.184000	67108293.794653
Observation end date	2000-02-16T17:08:06	2000-02-16T17:11:33

Parameter	Planned	Actual
Obspar format version number	7	7
Obspar file type	PREDICTED	ACTUAL
Obspar update status	NONE	UPDATED

## 2.3 Aspect



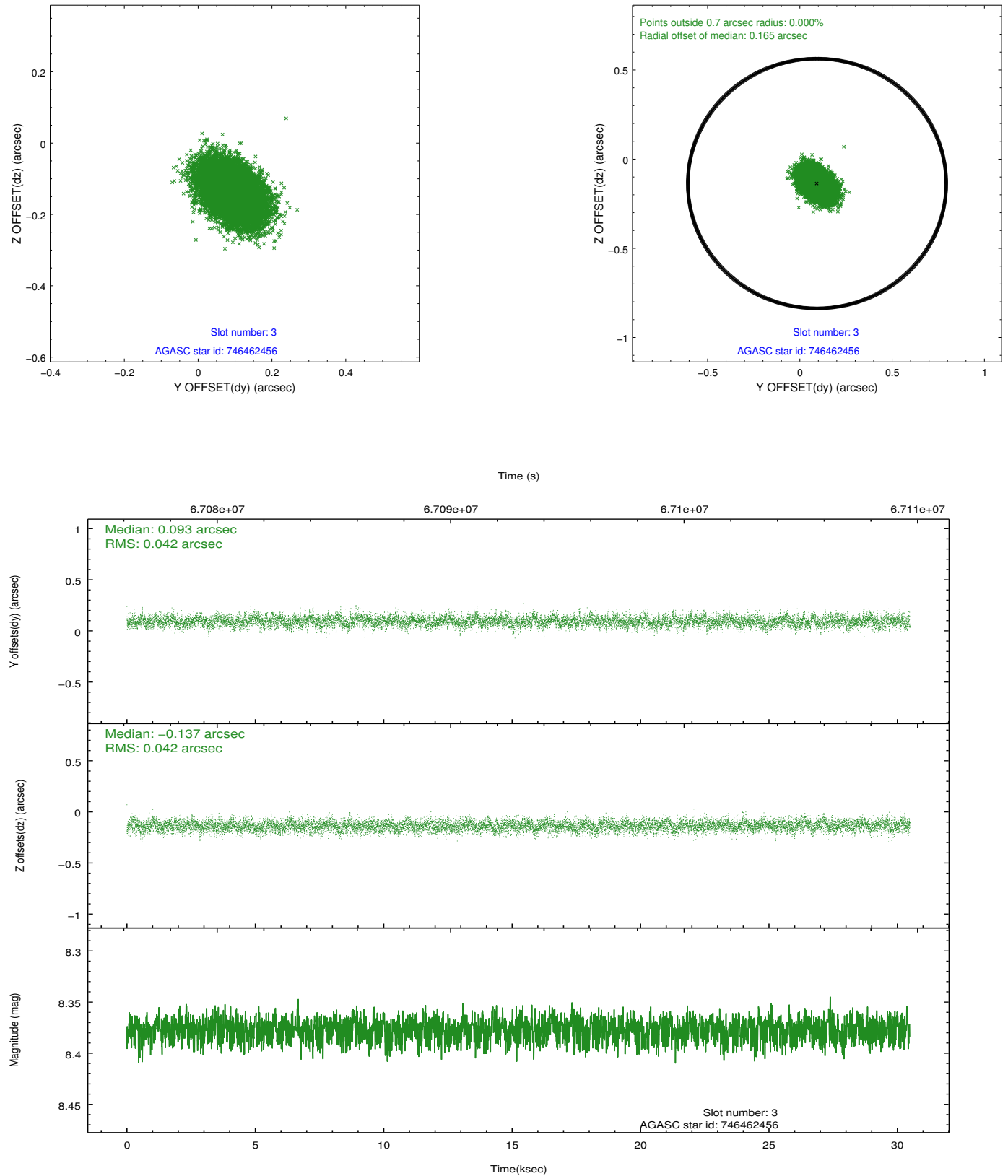


Slot Statistics

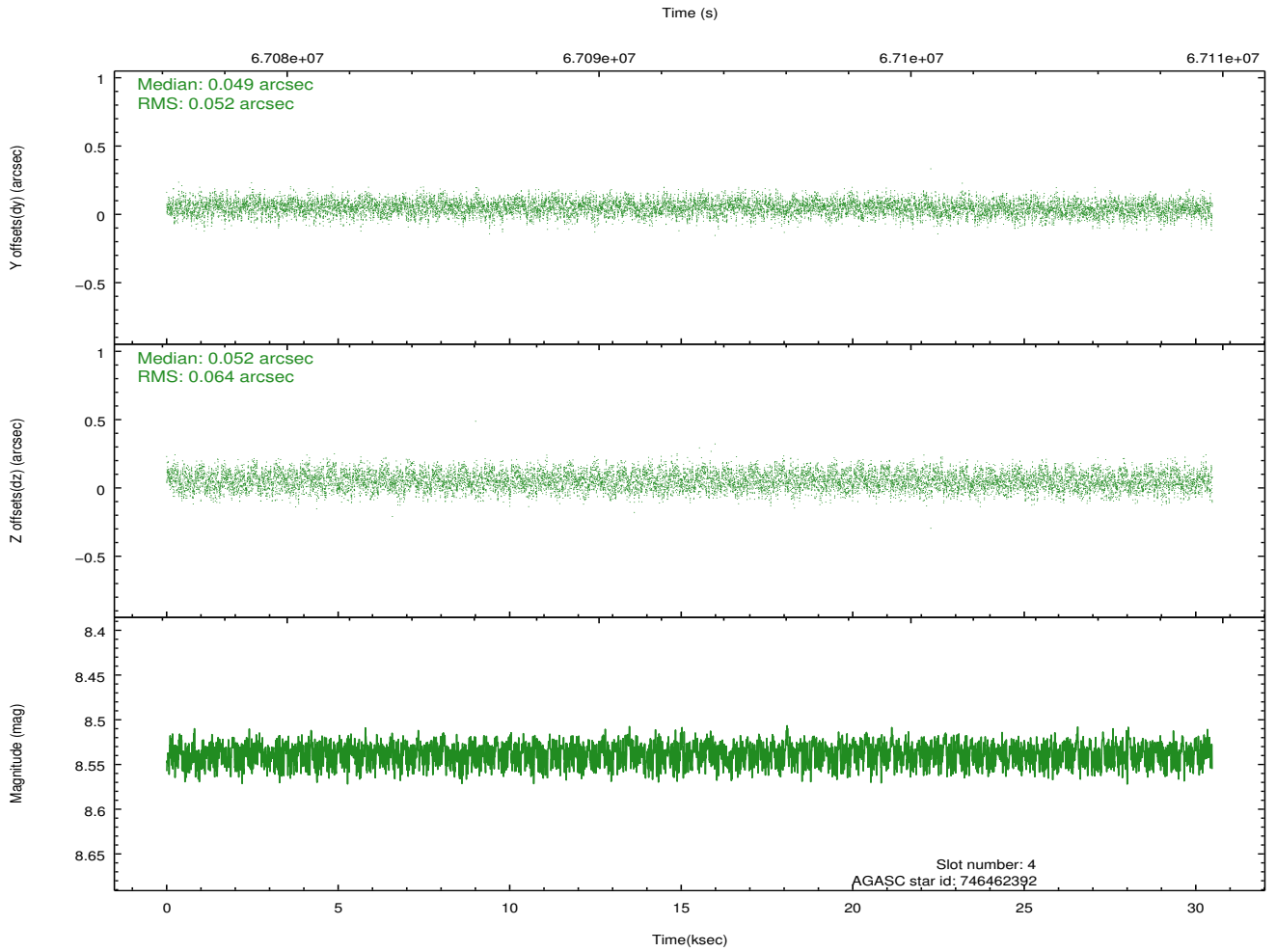
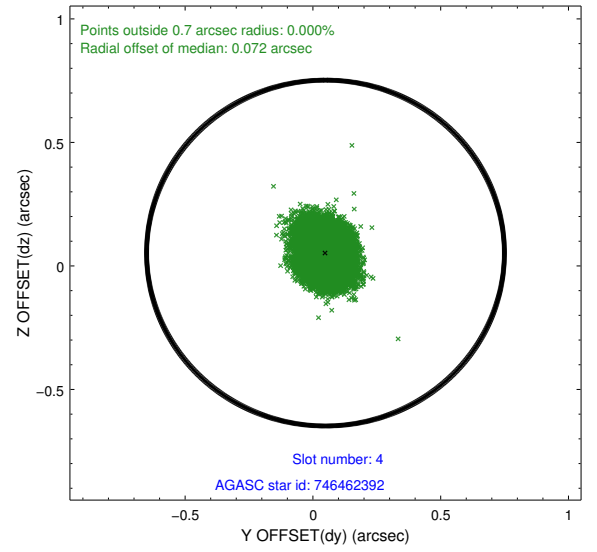
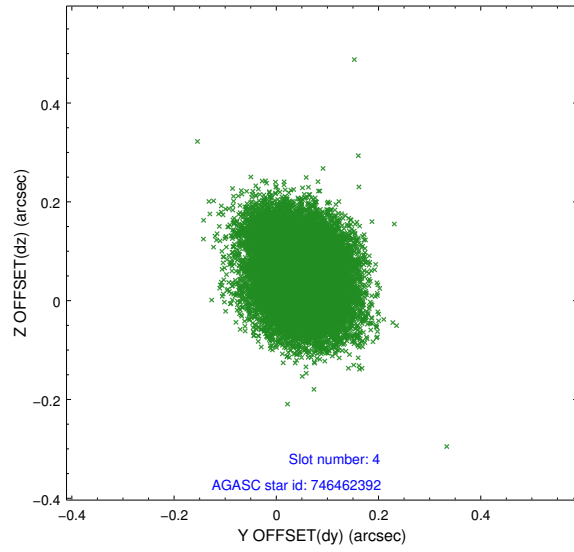
slot	status	id	mag	n_pts	med_dy	med_dz	dr1	dr2	ra	dec	mean_y	mean_z
0	FID	HRC-I-1	6.96	7437	0.058	0.019	0.014	0.020	0.000000	0.000000	-756.81	-1291.11
1	FID	HRC-I-3	7.05	7437	0.031	-0.054	0.011	0.021	0.000000	0.000000	-1185.39	1013.21
2	FID	HRC-I-4	7.00	7437	0.024	-0.058	0.010	0.024	0.000000	0.000000	1285.83	1011.09
3	GUIDE	746462456	8.38	14872	0.093	-0.137	0.062	0.106	278.652171	-10.530173	328.80	-847.16
4	GUIDE	746462392	8.54	14868	0.049	0.052	0.088	0.141	279.038421	-10.890715	-780.50	-2370.53
5	GUIDE	746460272	8.93	14866	-0.146	0.032	0.081	0.133	278.847488	-10.152127	1768.09	-1355.54
6	GUIDE	746461728	9.77	14858	0.003	0.054	0.109	0.177	278.986921	-10.530755	480.99	-2022.06
7	UNUSED		0.00	0	0.000	0.000	0.000	0.000	0.000000	0.000000	0.00	0.00

## 2.4 Star Slots

### 2.4.1 Slot 3

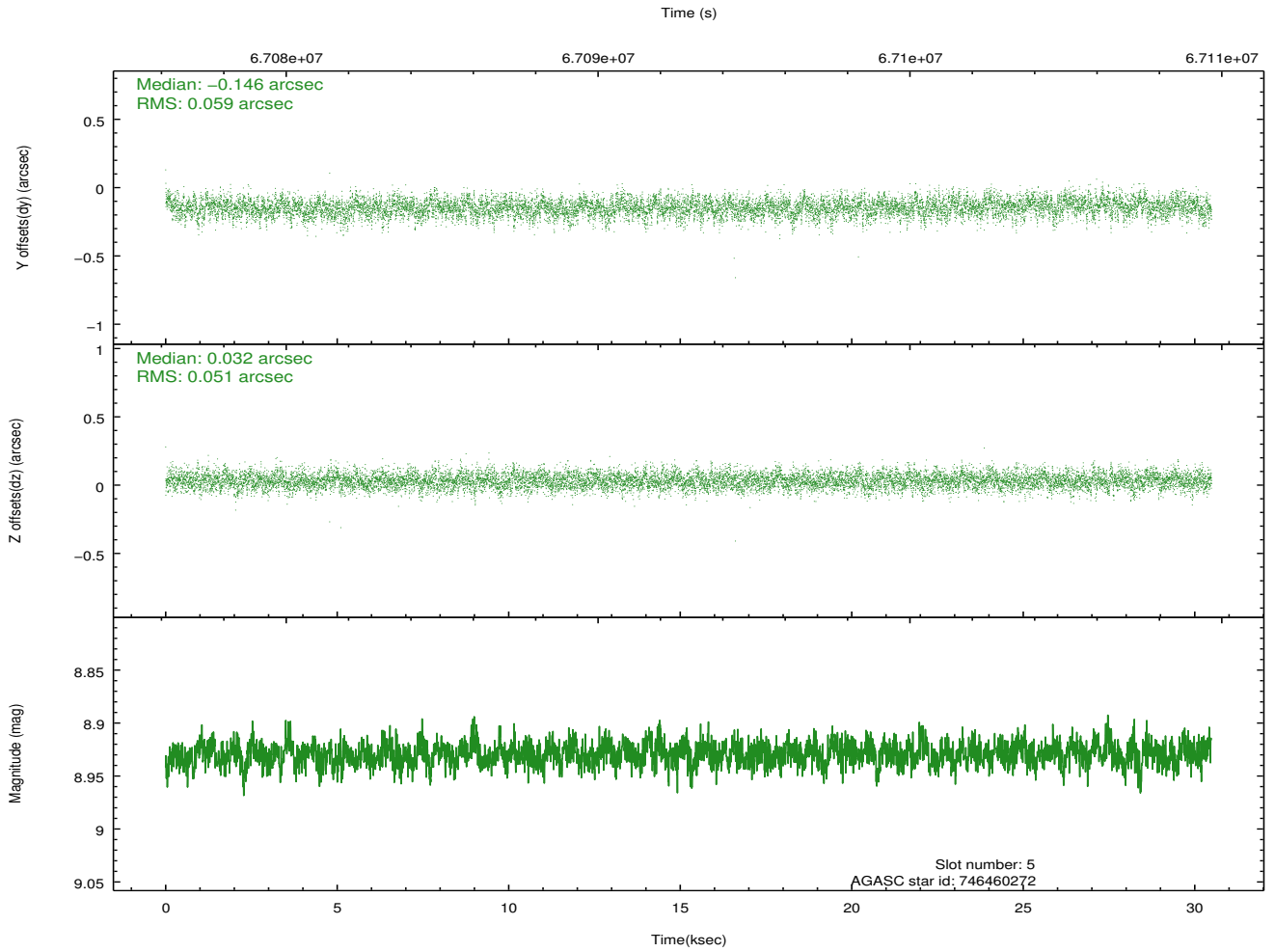
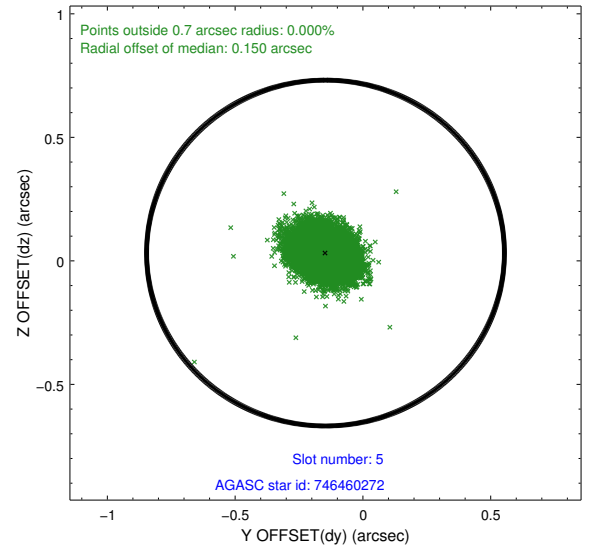
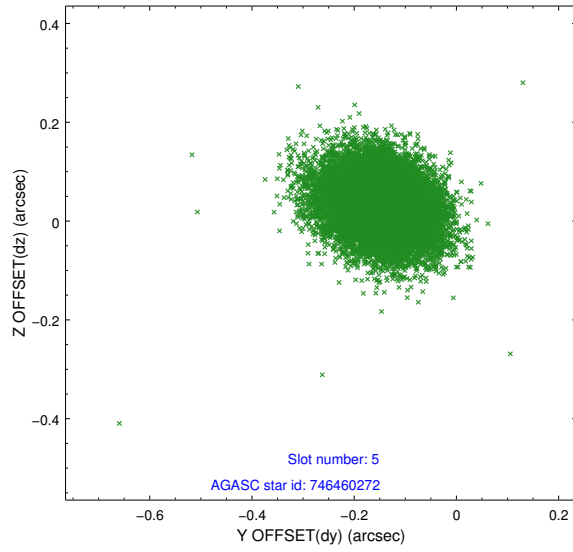


## 2.4.2 Slot 4

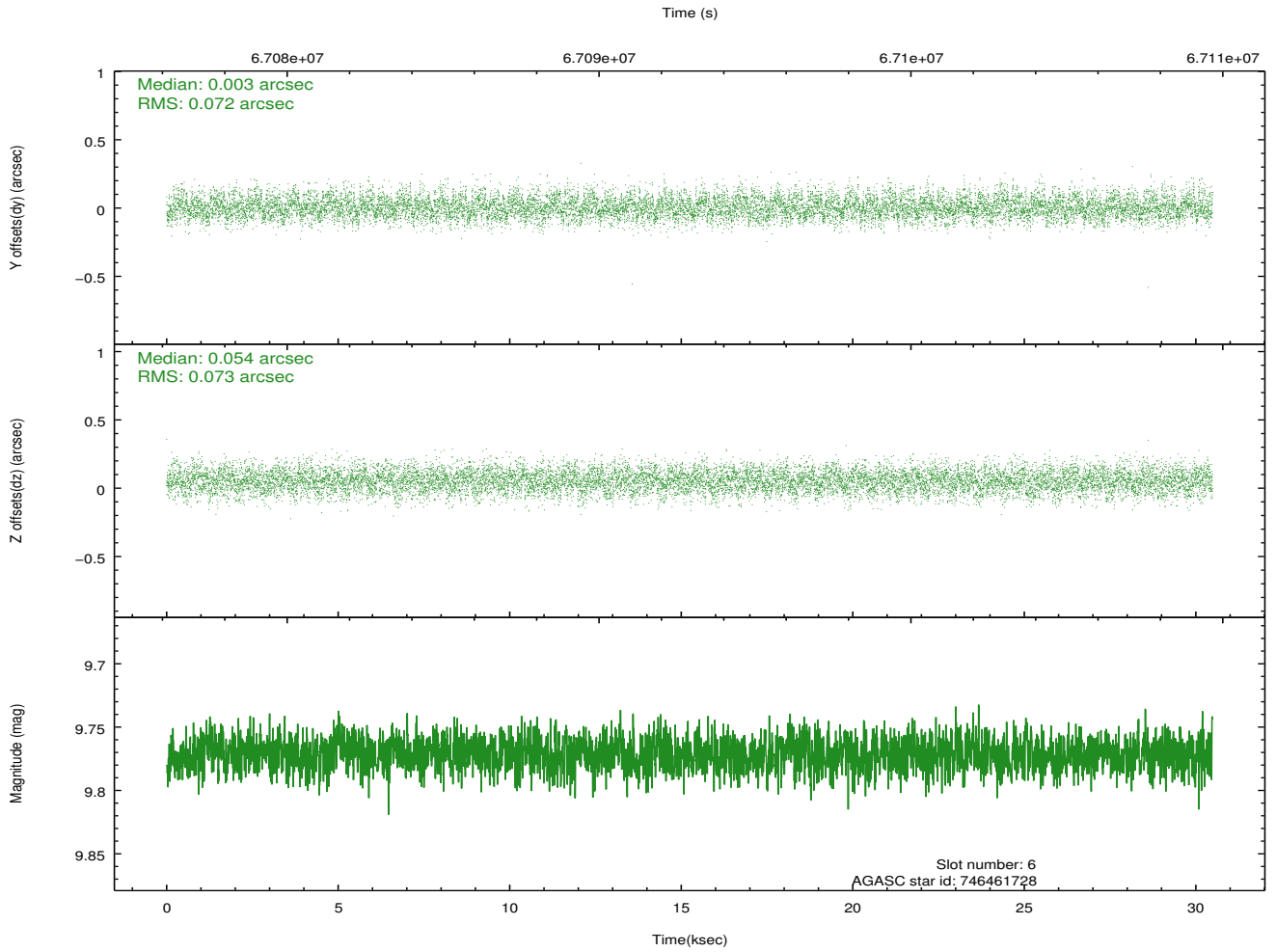
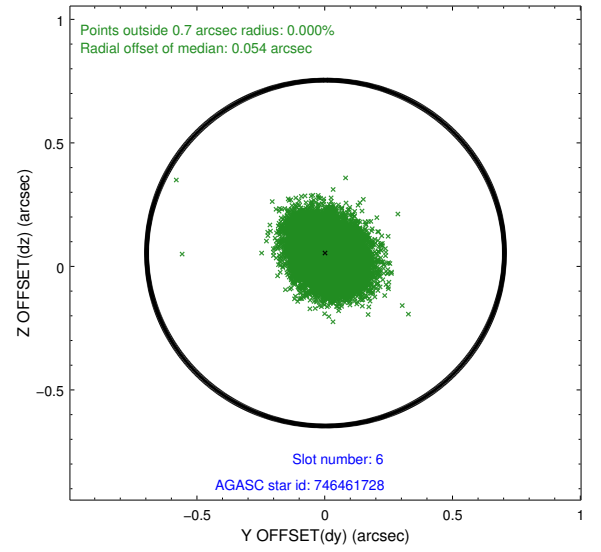
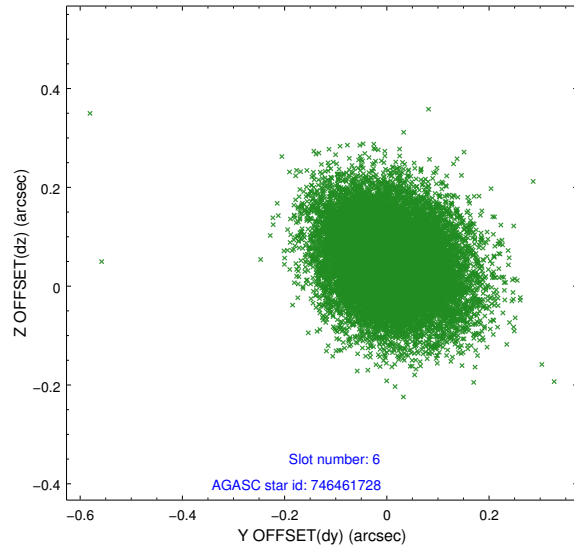




### 2.4.3 Slot 5

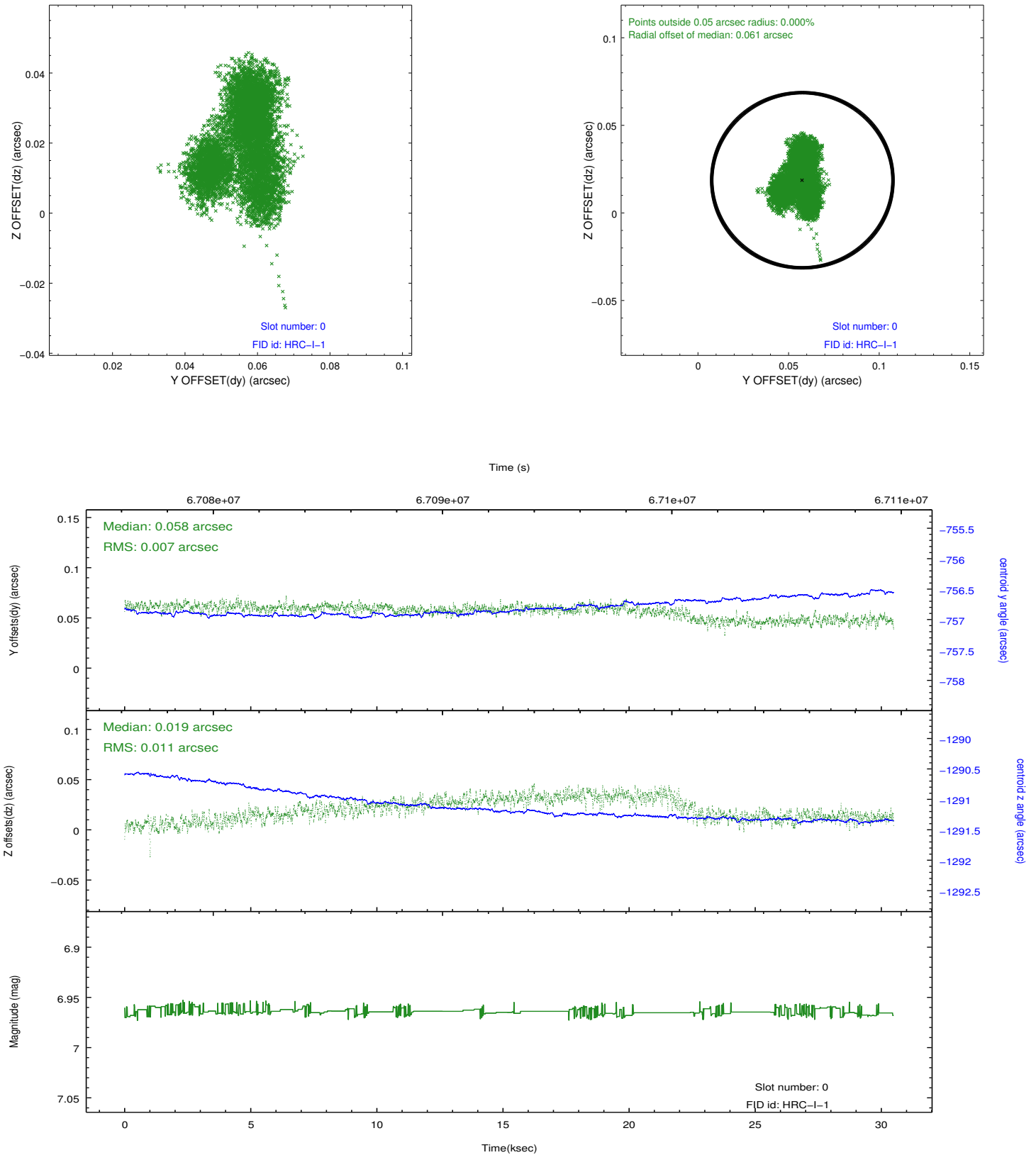


## 2.4.4 Slot 6

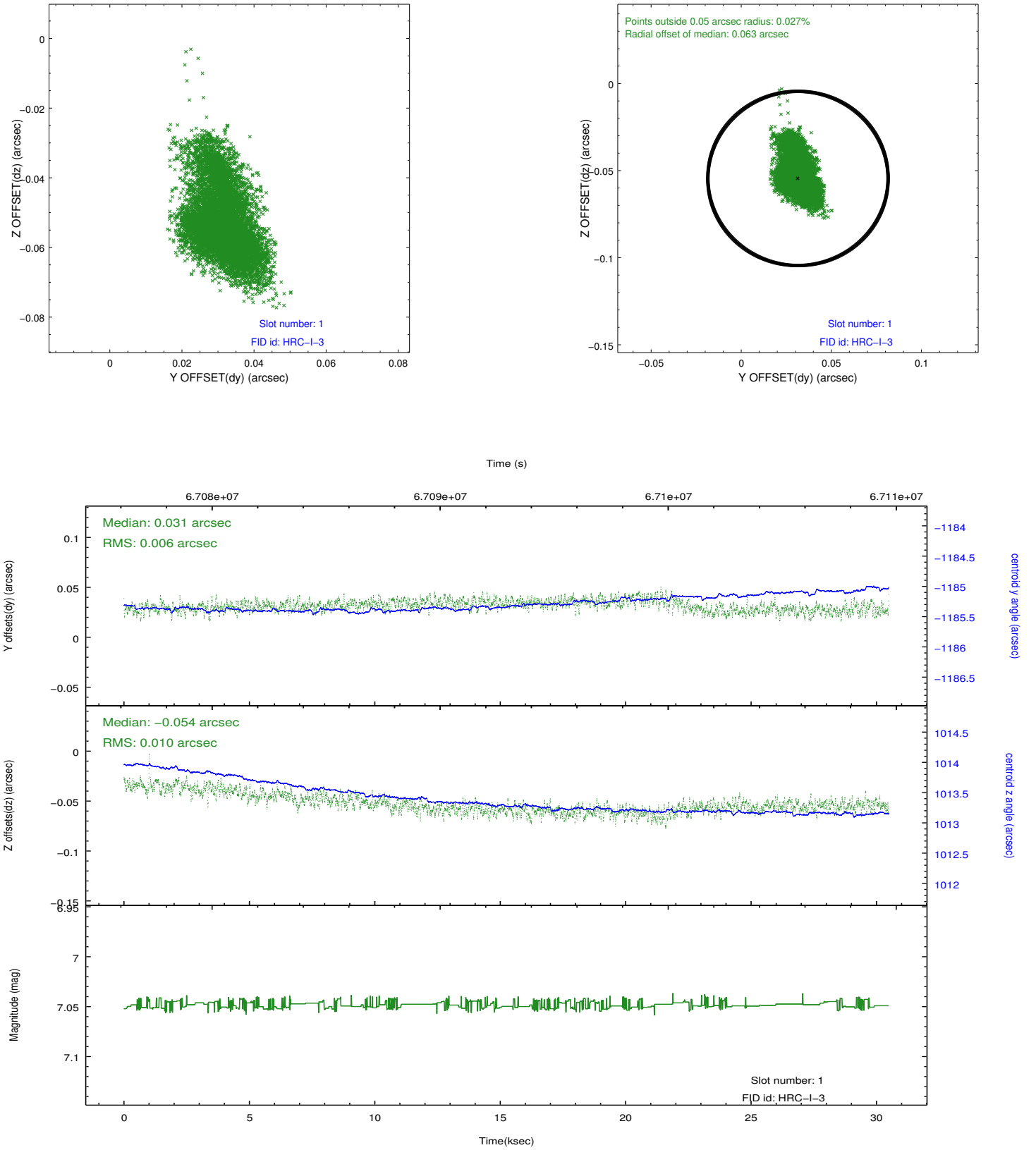


## 2.5 FID Slots

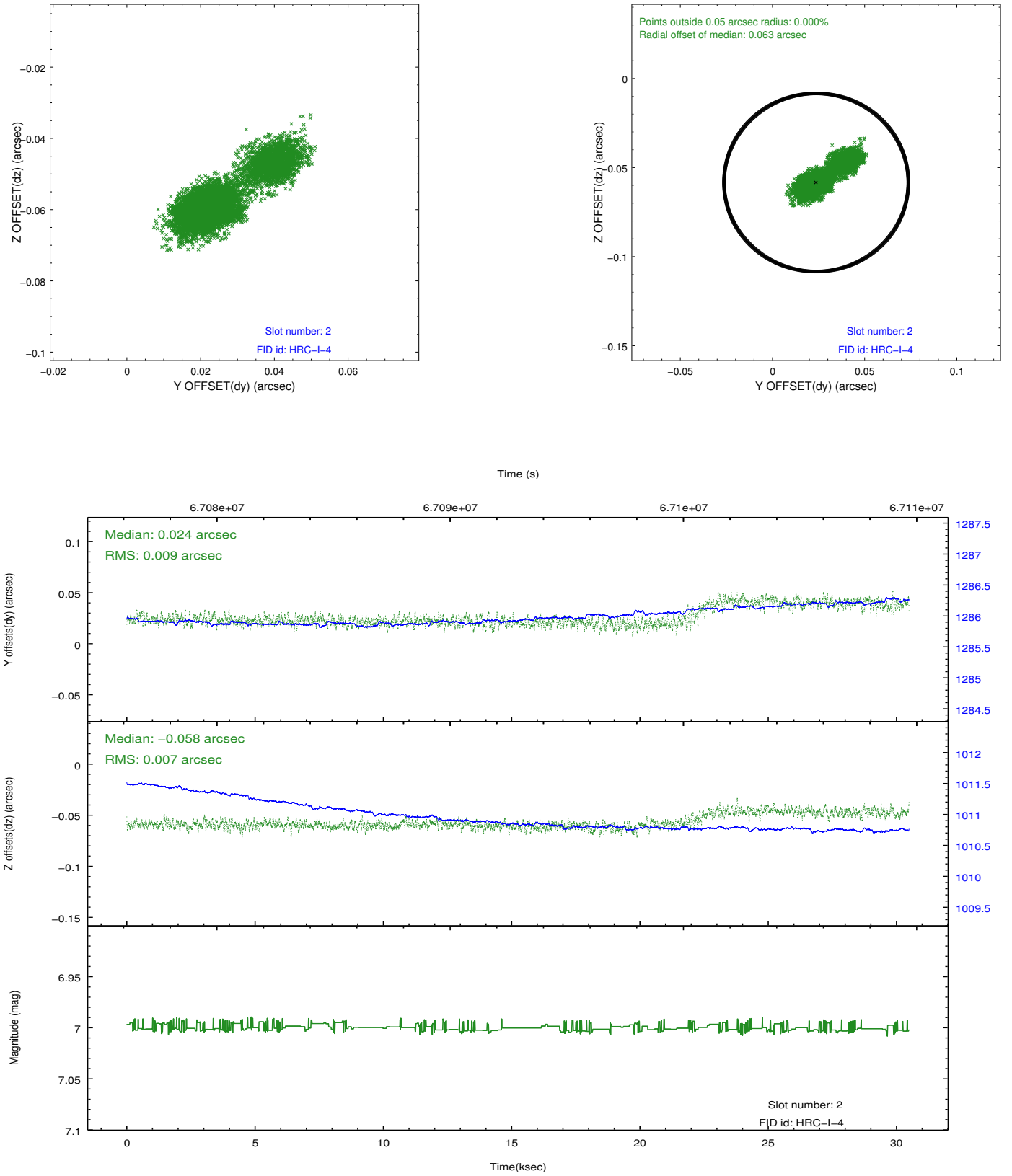
### 2.5.1 Slot 0



## 2.5.2 Slot 1



### 2.5.3 Slot 2



## A Summary

### A.1 Status

V&V Scientist	Joy Nichols
V&V Date (YYYY-MM-DD)	2012.08.24
V&V Edition	1
V&V Disposition and Status	OK
V&V Charge Time	30.48

### A.2 Comments