

V&V Reference Report

L2 ASCDS Version : 7.6.11

Observation 1312 - L2 Version 3
Chandra X-Ray Center

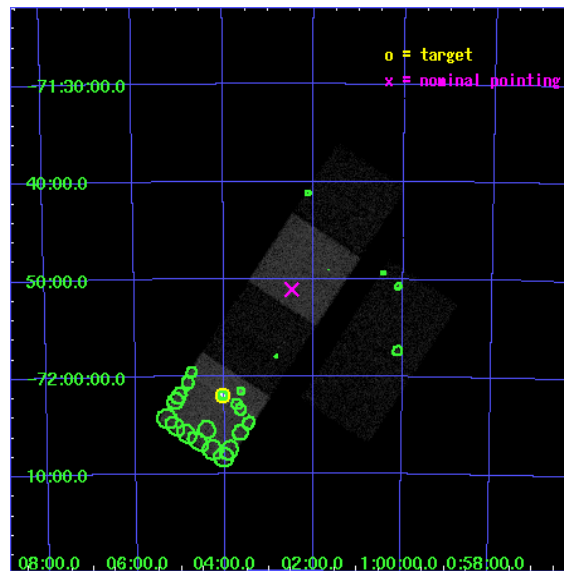
L2 Processing Date : Jul 13 2007

Contents

1	Front	2
2	OBI	3
2.1	OBI	3
2.1.1	Images	3
2.1.2	Bias	3
2.1.3	Parameters	4
2.1.4	Events	4
2.2	Compared Parameters	5
2.3	Aspect	6
2.4	Star Slots	9
2.4.1	Slot 3	9
2.4.2	Slot 4	10
2.4.3	Slot 5	11
2.4.4	Slot 6	12
2.4.5	Slot 7	13
2.5	FID Slots	14
2.5.1	Slot 0	14
2.5.2	Slot 1	15
2.5.3	Slot 2	16
3	Point Sources	17
A	Summary	18
A.1	Status	18
A.2	Comments	18

1 Front

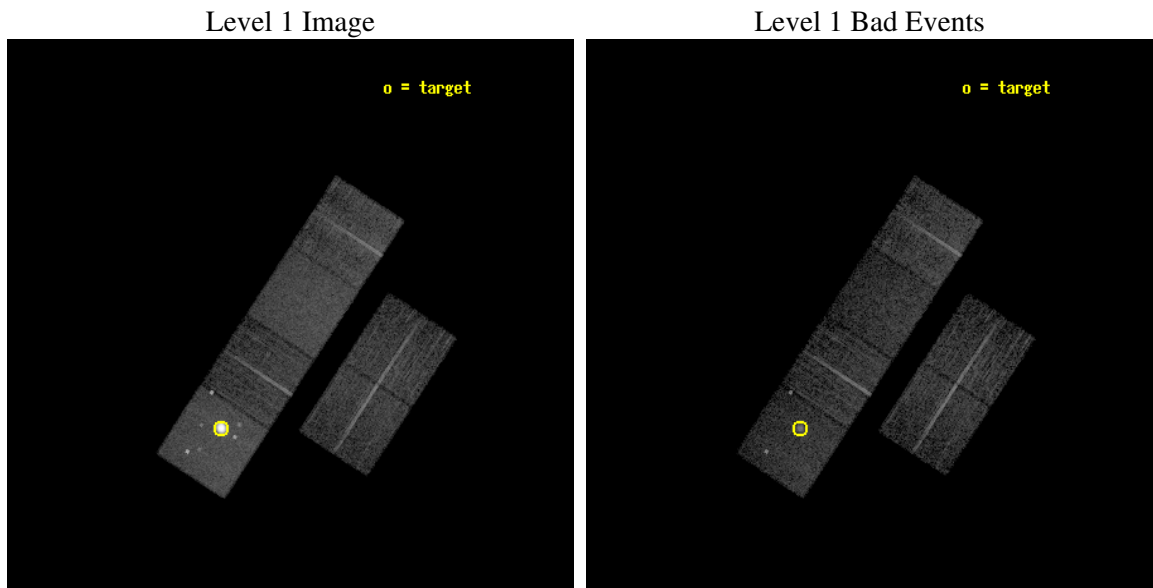
seq_num	590126
obs_id	1312
title	ACIS CALIBRATION OBSERVATION OF THE SUPERNOVA REMNANT E0102-72 (DEC 2000)
observer	Dr. CXC Calibration
object	E0102-72.3 [Chip S1, T=120, Offsets=-13,0,0]
dtcycle	0
cycle	P
ra_targ	16.01
dec_targ	-72.032028
ra_nom	15.620068551368
dec_nom	-71.851463301954
roll_nom	303.29670594132
revision	3
ontime	7756.8000072241
livetime	7658.5787349484
ontime2	7756.8000072241
ontime3	7756.8000072241
ontime5	7756.8000072241
ontime6	7756.8000072241
ontime7	7756.8000072241
ontime8	7753.5590668917
l2events	134193



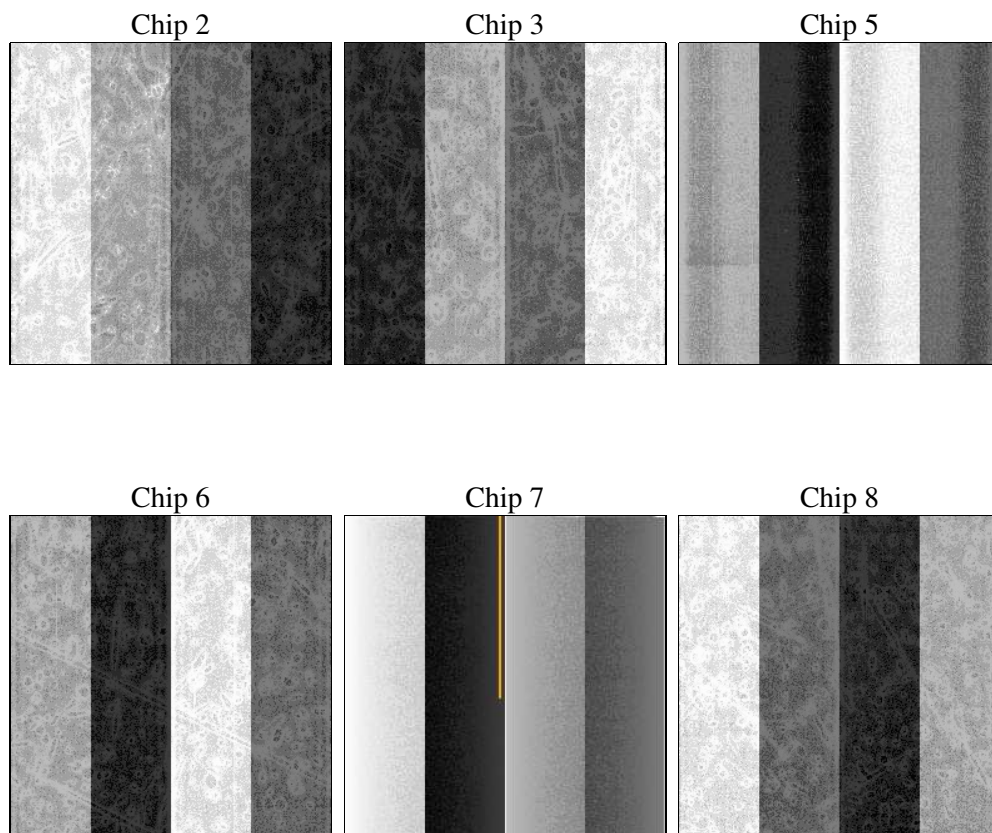
2 OBI

2.1 OBI

2.1.1 Images



2.1.2 Bias



2.1.3 Parameters

obi_num	0
ascdsver	7.6.11
caldbver	3.4.0
date	2007-07-13T16:48:54
revision	3

sched_exp_time	8000.000000
ontime	7756.8000072241
ontime2	7756.8000072241
ontime3	7756.8000072241
ontime5	7756.8000072241
ontime6	7756.8000072241
ontime7	7756.8000072241
ontime8	7753.5590668917
llevents	390006

2.1.4 Events

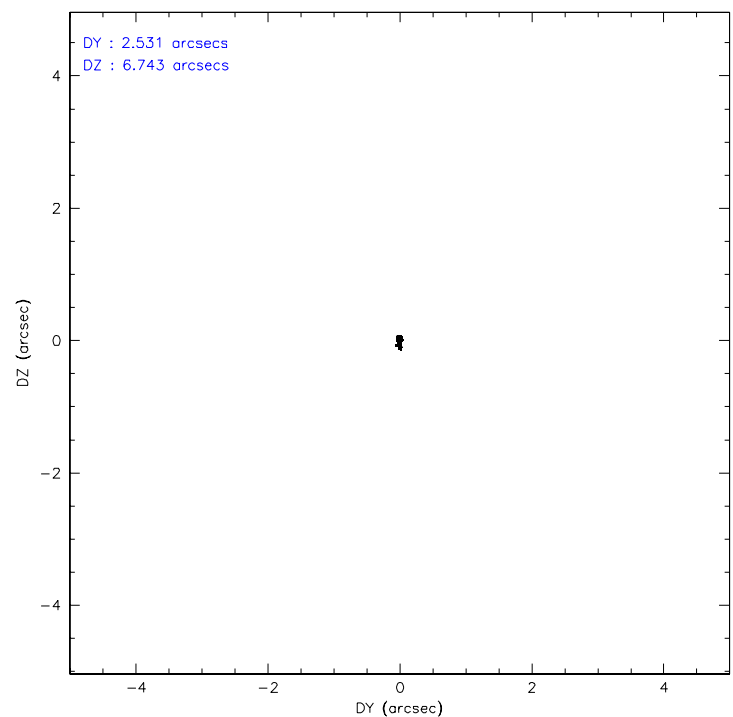
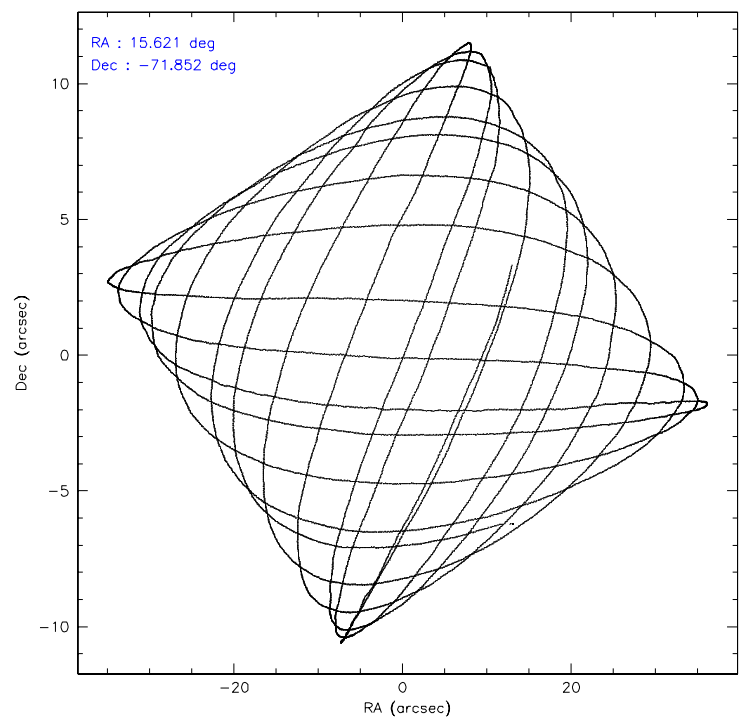
	ccd 2	ccd 3	ccd 5	ccd 6	ccd 7	ccd 8
level 1 events	45836	45918	128762	46476	62773	60241
rejected events	40421	40540	37066	40903	33877	48222
rejected %	88%	88%	28%	88%	53%	80%

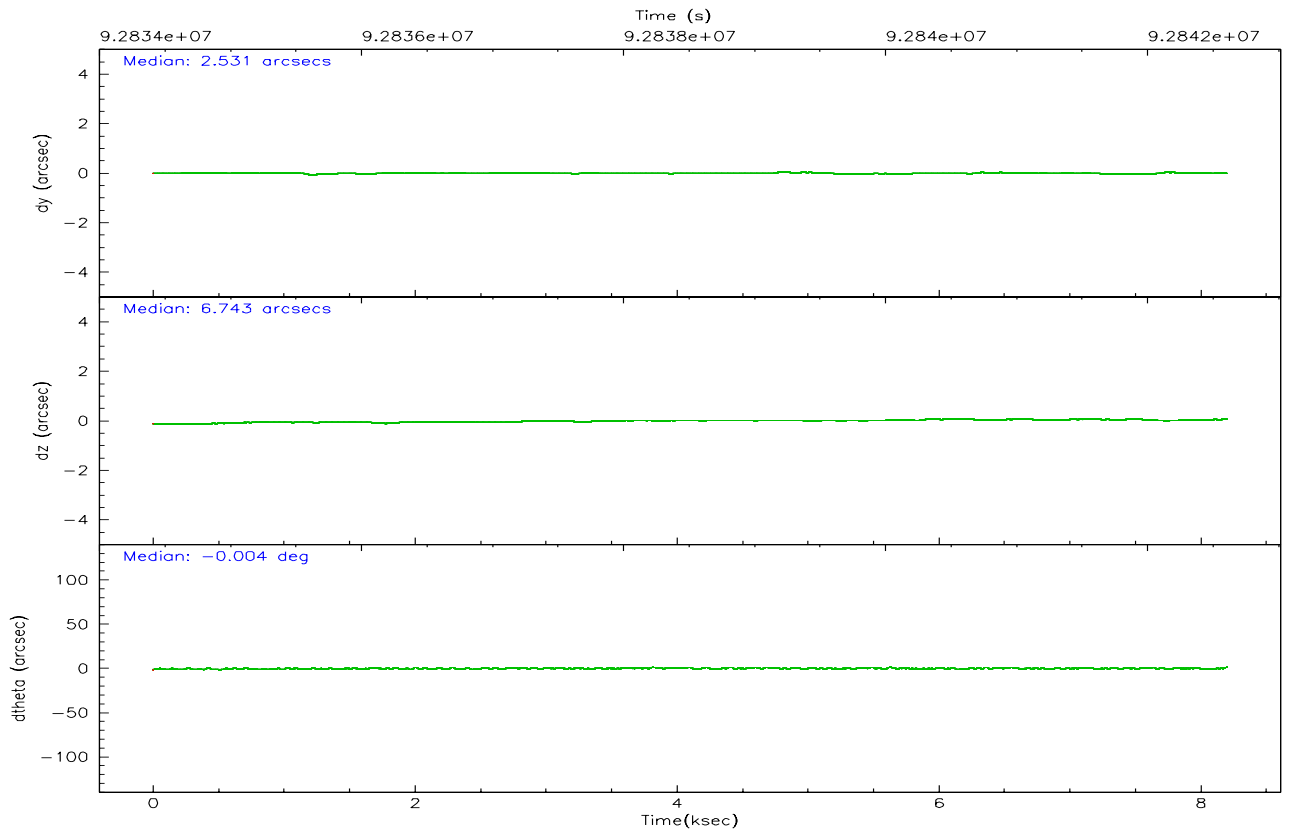
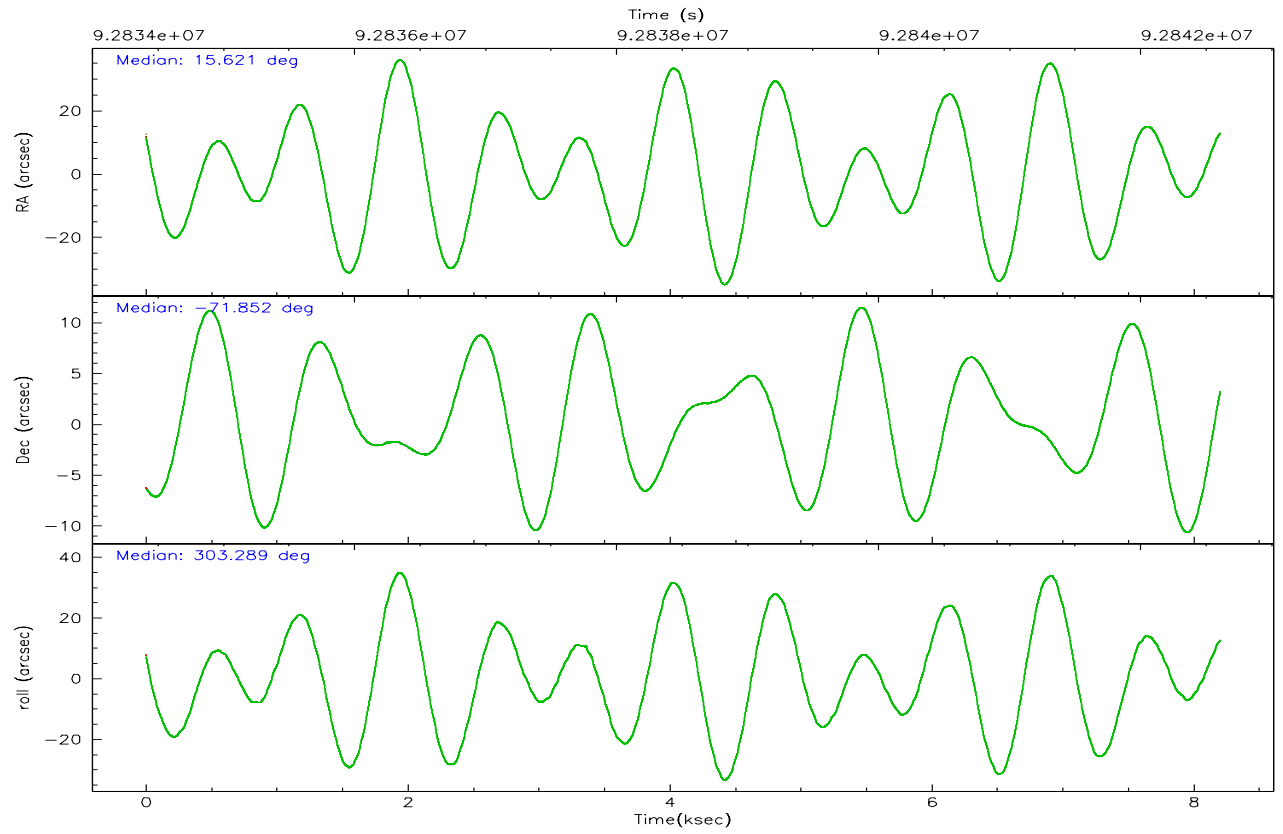
	ccd 2	ccd 3	ccd 5	ccd 6	ccd 7	ccd 8
grade 0 events	2445	2440	32464	2492	3271	3761
	5%	5%	25%	5%	5%	6%
grade 1 events	25	18	576	16	51	35
	0%	0%	0%	0%	0%	0%
grade 2 events	1107	1003	25190	1057	5662	2517
	2%	2%	19%	2%	9%	4%
grade 3 events	503	520	6583	546	2664	1332
	1%	1%	5%	1%	4%	2%
grade 4 events	444	491	6555	498	2620	1208
	0%	1%	5%	1%	4%	2%
grade 5 events	1558	1733	5759	1891	5639	2418
	3%	3%	4%	4%	8%	4%
grade 6 events	919	927	20990	991	14714	3203
	2%	2%	16%	2%	23%	5%
grade 7 events	38835	38786	30645	38985	28152	45767
	84%	84%	23%	83%	44%	75%

2.2 Compared Parameters

Parameter	Planned	Actual	Parameter	Planned	Actual
Instrument	ACIS	ACIS	Obspar format version number	6	6
Detector	ACIS-235678	ACIS-235678	Obspar file type	PREDICTED	ACTUAL
Grating	NONE	NONE	Obspar update status	NONE	UPDATED
Data mode	FAINT	FAINT	Number of optional ACIS chips dropped	0	0
Observation mode	POINTING	POINTING	On-chip summing requested	N	N
Pointing RA	15.541475	15.62006855136791	Subarray requested	NONE	NONE
Pointing Dec	-71.839299	-71.85146330195377	Alternating exposures requested	N	N
Pointing Roll	303.065402	303.2967059413239	Primary exposure time	0.000000	3.2
Window start time	92016064.184000	92016064.184000			
Window stop time	94608064.184000	94608064.184000			
SIM focus pos (mm)	-0.684267	-0.6828225247311905			
SIM defocus (mm)	0	0.001444936568705701			
SIM translation stage pos (mm)	-190.132523	-190.1400660498719			
SIM translation stage offset (mm)	0	0.00754346686406393			
Observation start time	92834608.184000	92834231.68010201			
Observation start date	2000-12-10T11:22:24	2000-12-10T11:17:11			
Observation end time	92842608.184000	92842742.255427			
Observation end date	2000-12-10T13:35:44	2000-12-10T13:39:02			
Read mode	TIMED	TIMED			

2.3 Aspect



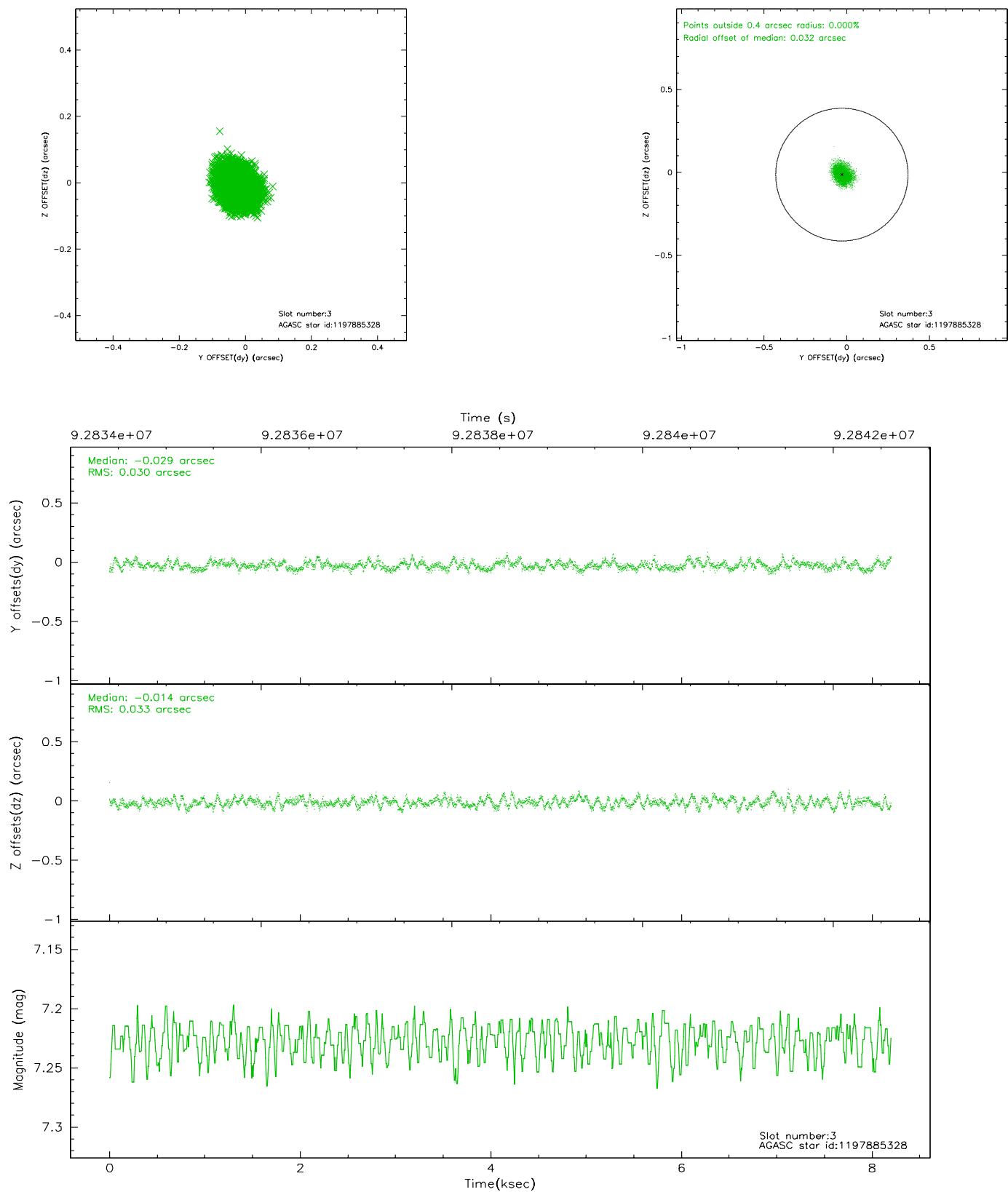


Slot Statistics

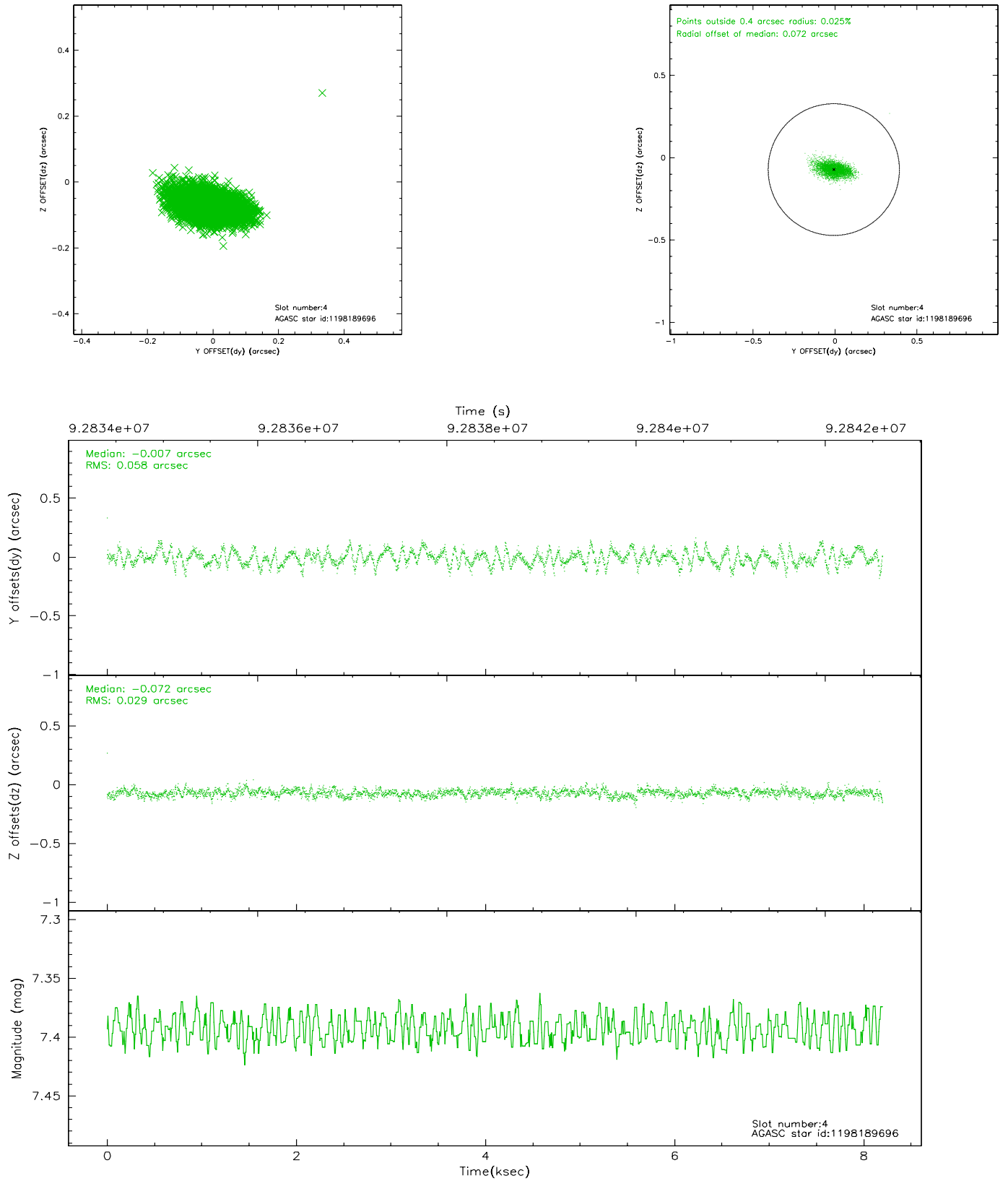
slot	status	id	mag	n_pts	med_dy	med_dz	dr1	dr2	ra	dec	mean_y	mean_z
0	FID	ACIS-S-2	7.12	2001	0.017	0.007	0.005	0.010	0.000000	0.000000	-755.14	-1727.88
1	FID	ACIS-S-4	7.20	2000	-0.024	-0.022	0.006	0.009	0.000000	0.000000	2157.79	179.87
2	FID	ACIS-S-6	7.35	2000	-0.020	0.022	0.006	0.011	0.000000	0.000000	407.68	818.08
3	GUIDE	1197885328	7.23	4000	-0.029	-0.014	0.048	0.076	16.283090	-71.733943	142.33	905.27
4	GUIDE	1198189696	7.39	4001	-0.007	-0.072	0.065	0.117	15.223750	-72.697522	2404.24	-1971.09
5	GUIDE	1197750936	7.56	4002	-0.092	-0.035	0.050	0.081	15.387940	-71.549550	-969.46	421.49
6	GUIDE	1197884536	8.50	4002	0.056	0.055	0.057	0.092	17.160729	-71.835289	998.83	1517.43
7	GUIDE	1197884712	8.31	4000	0.072	0.064	0.055	0.090	16.087398	-72.252690	1576.15	-310.97

2.4 Star Slots

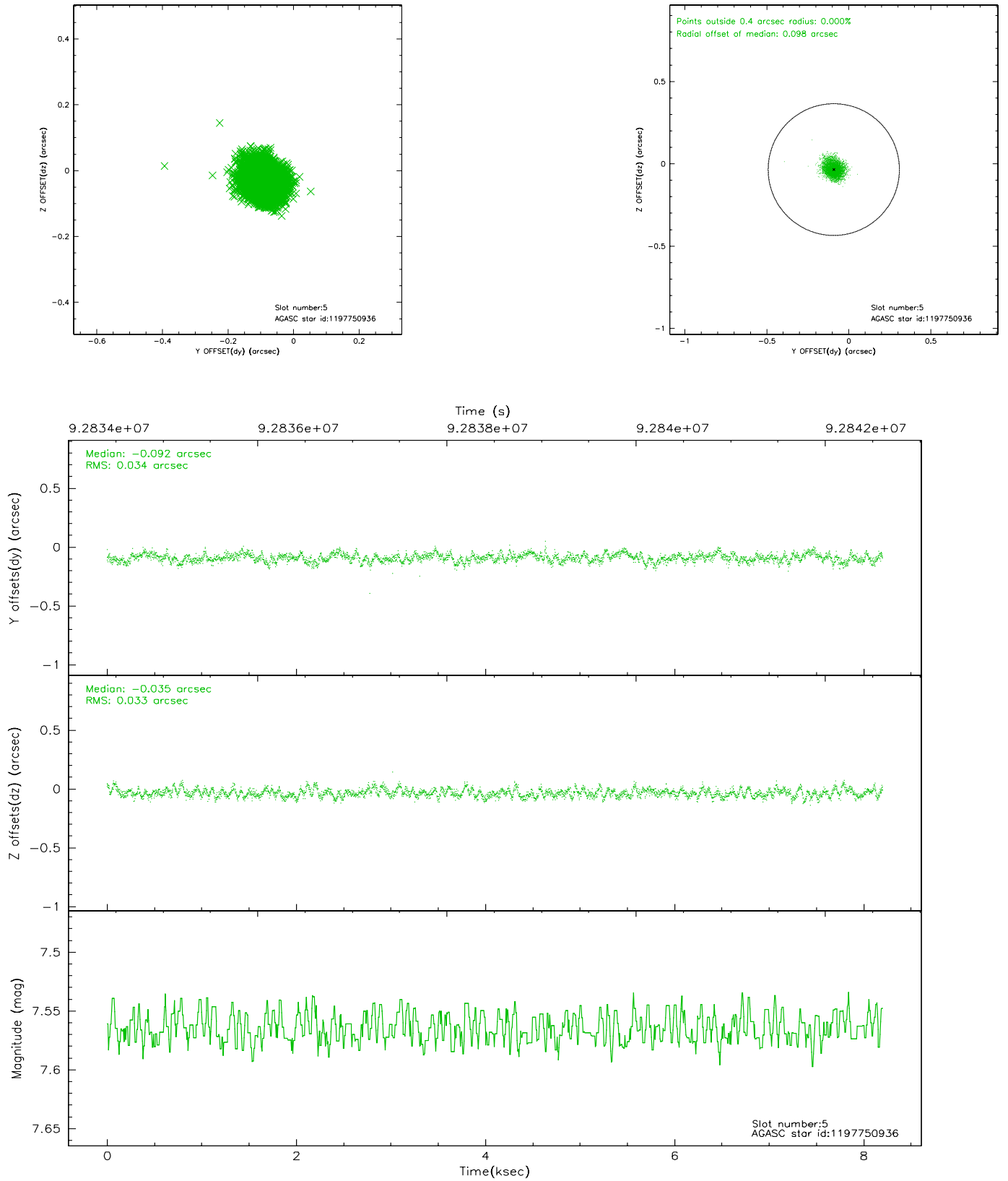
2.4.1 Slot 3



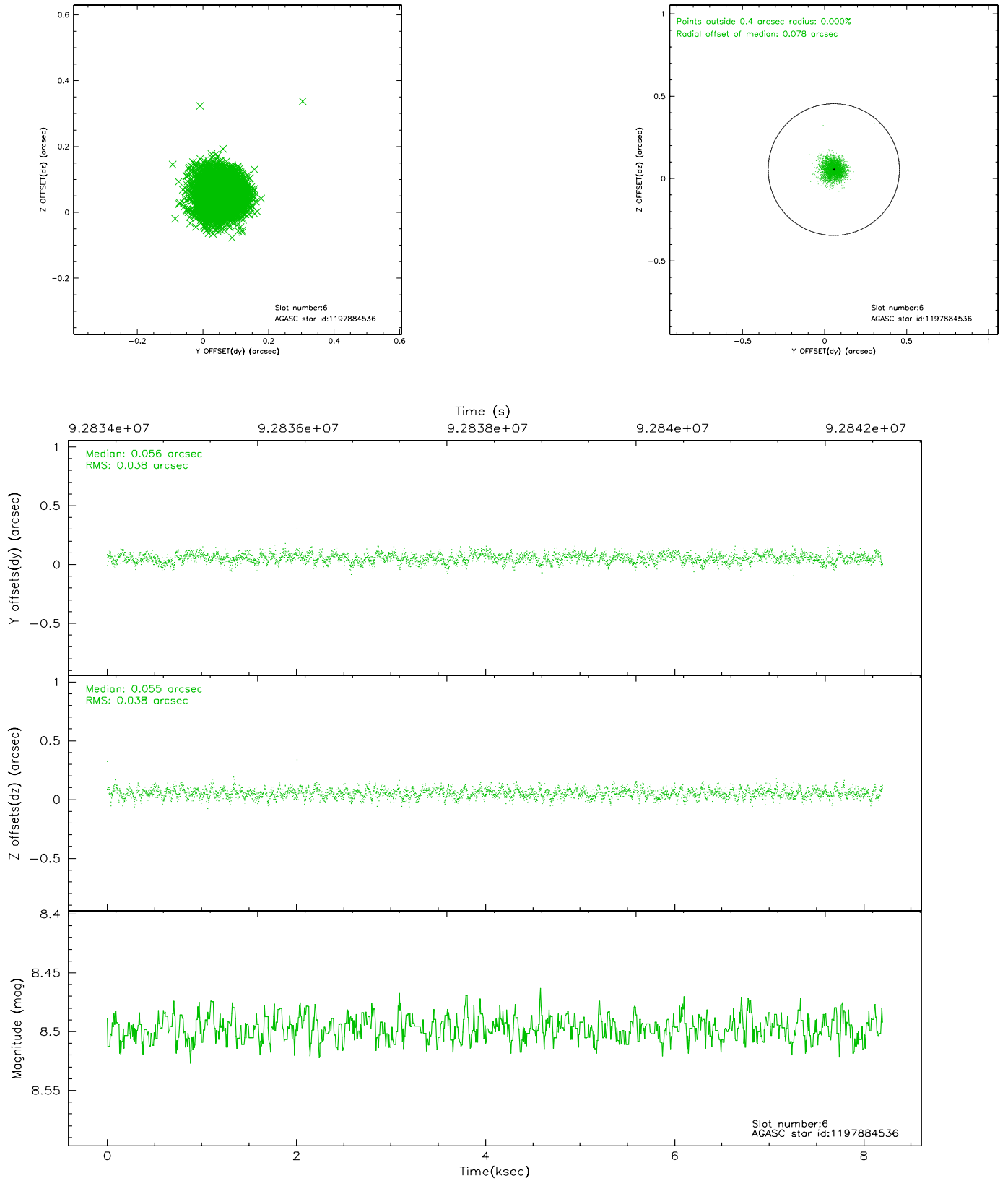
2.4.2 Slot 4



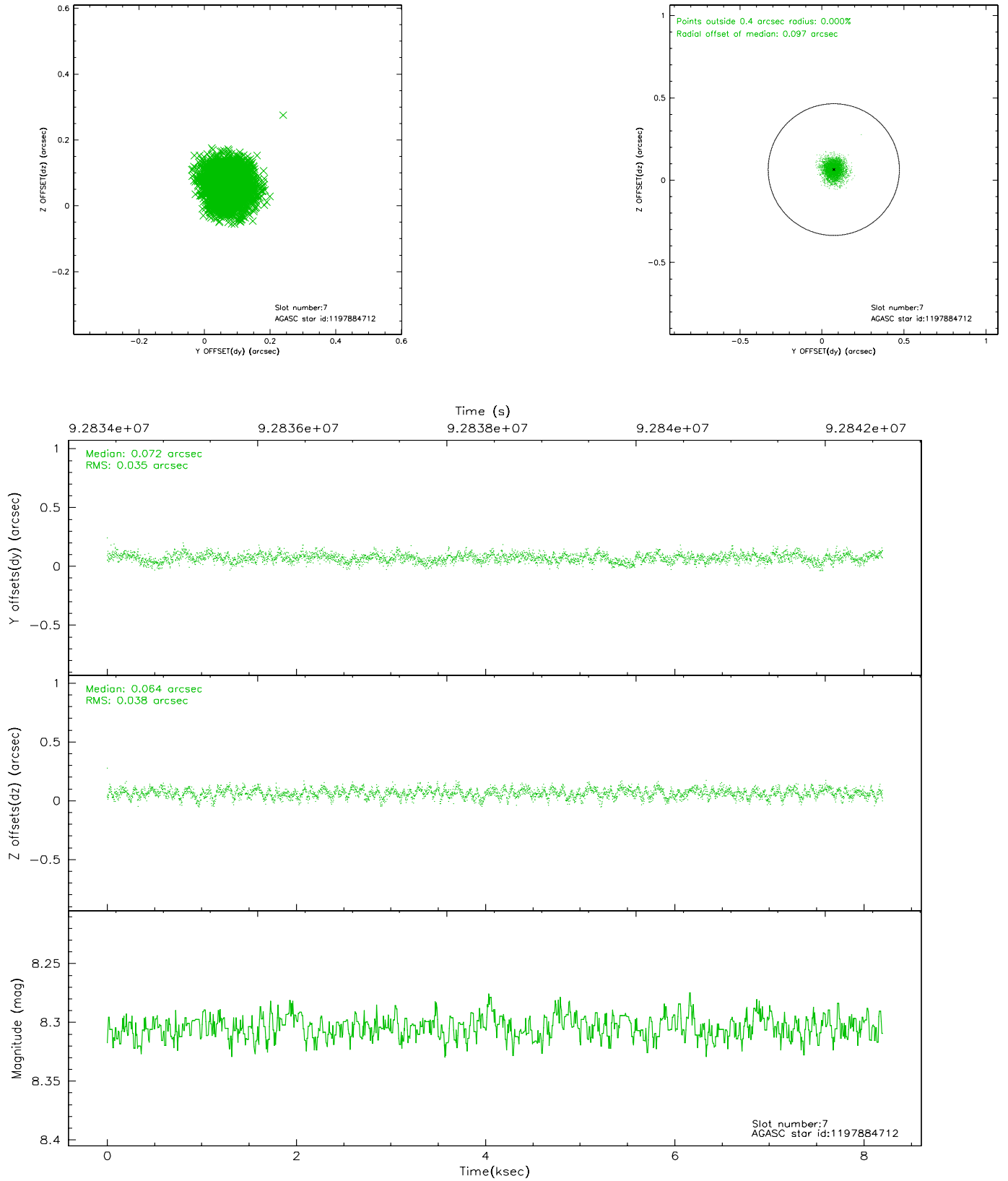
2.4.3 Slot 5



2.4.4 Slot 6

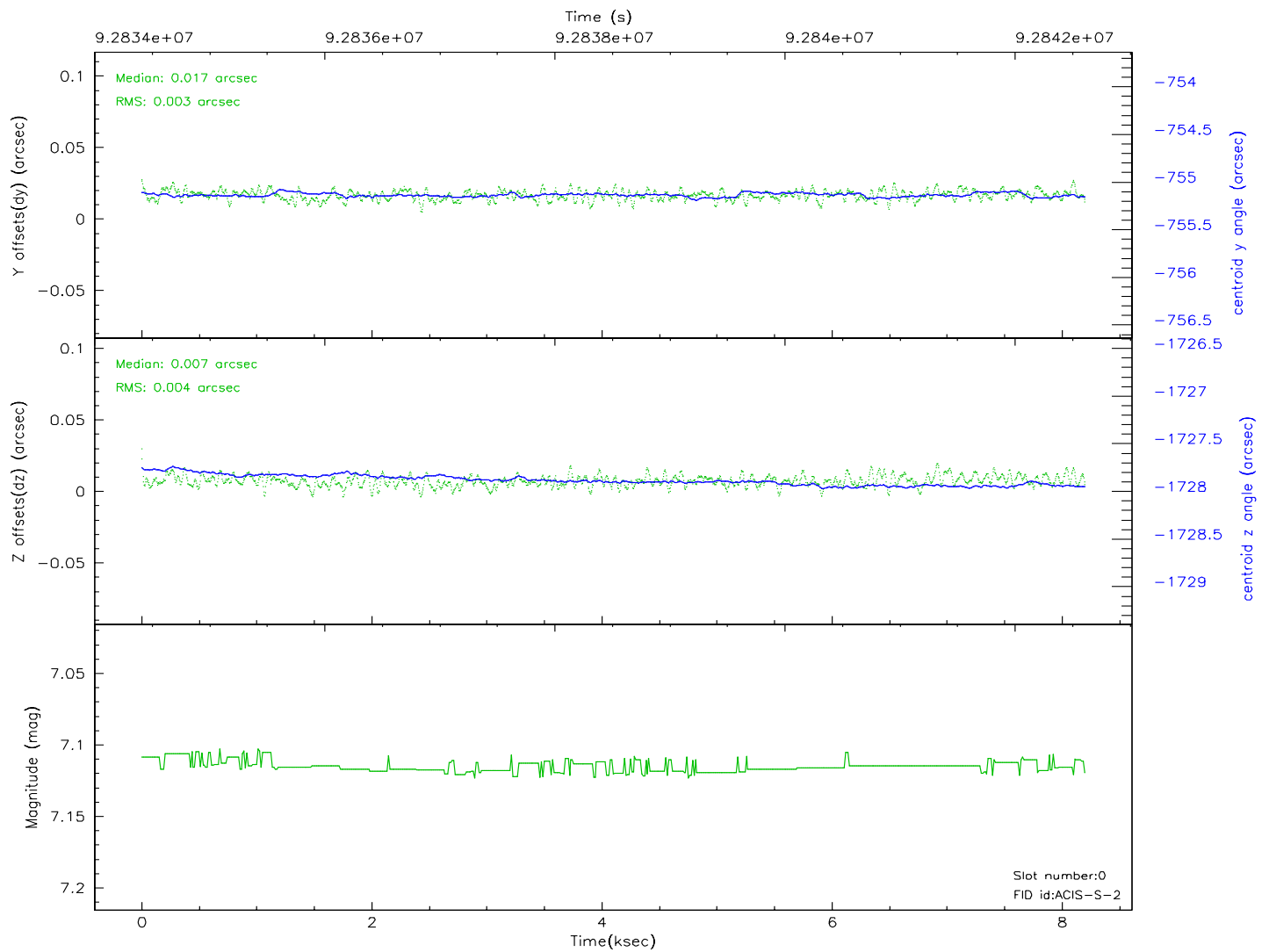
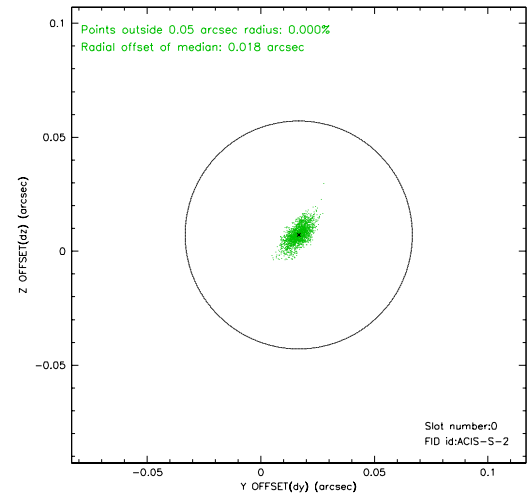
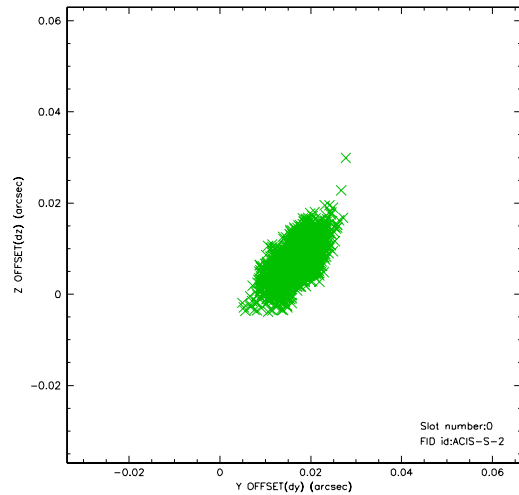


2.4.5 Slot 7

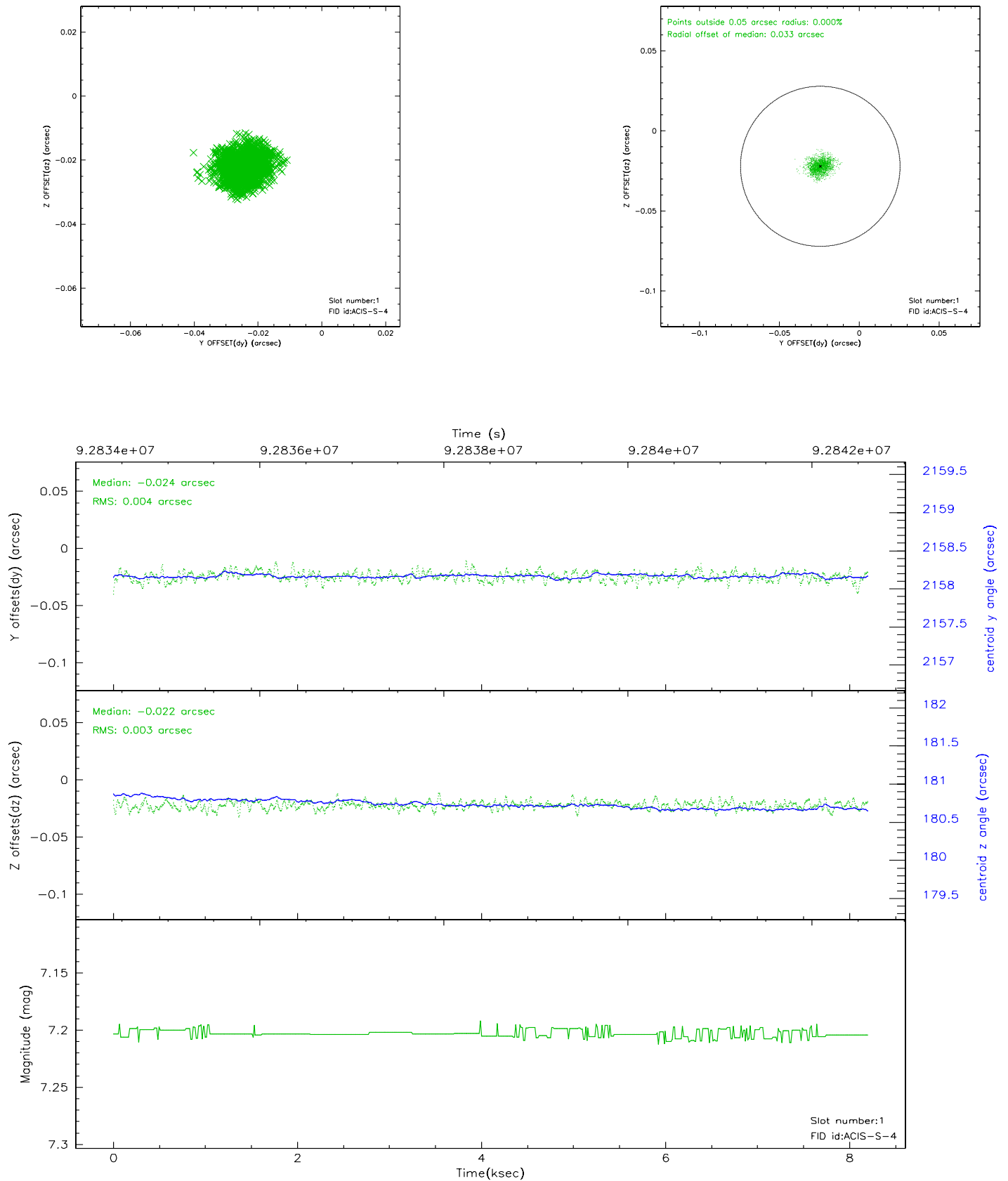


2.5 FID Slots

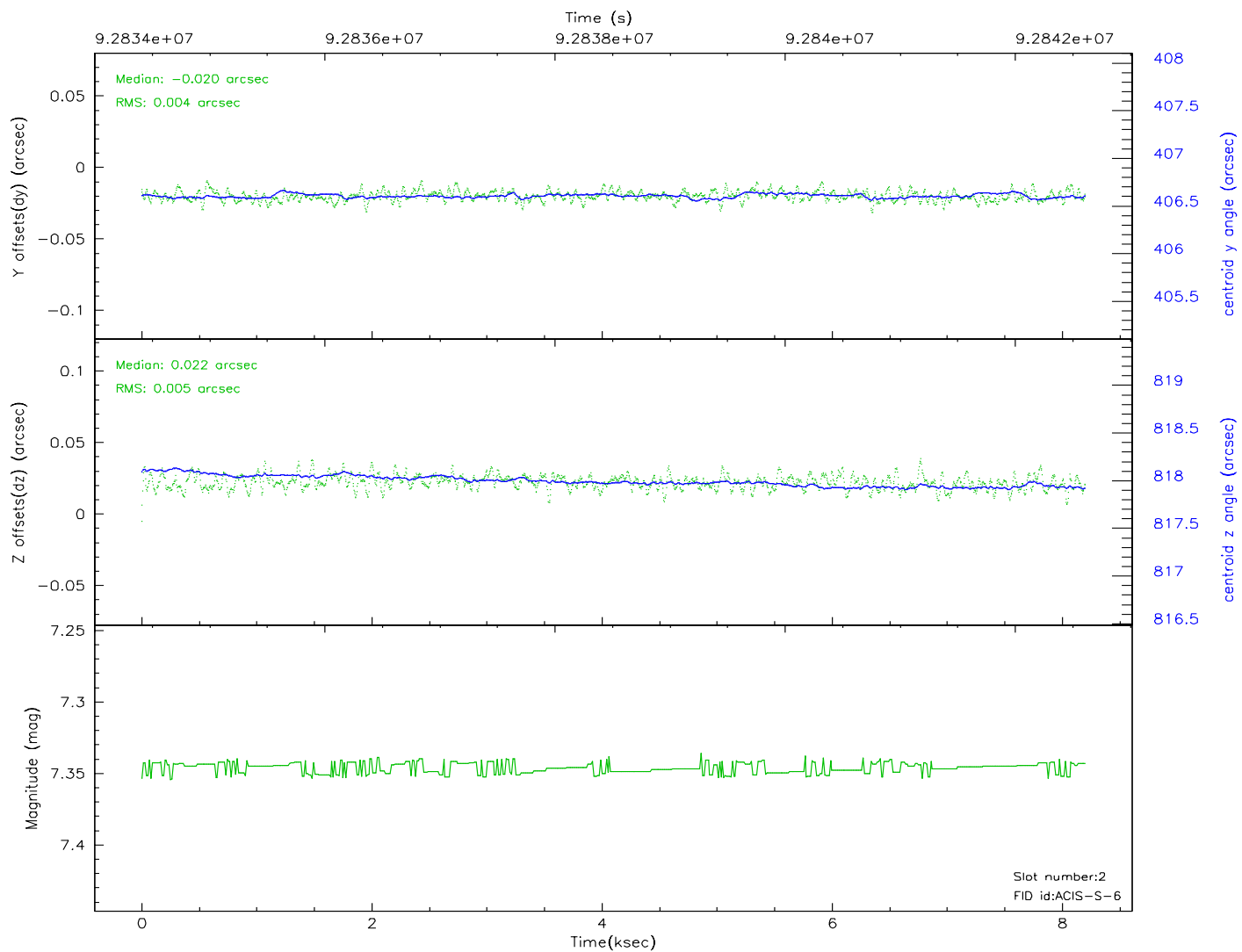
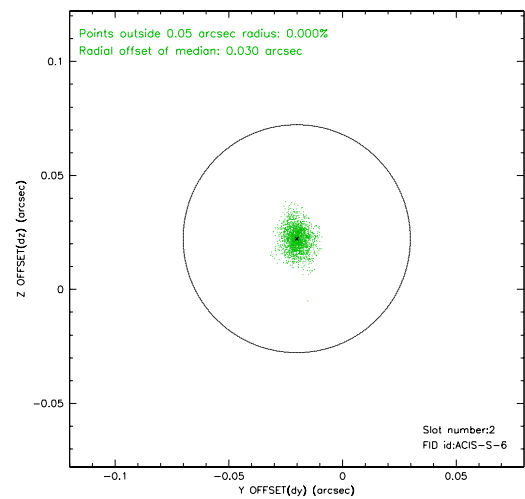
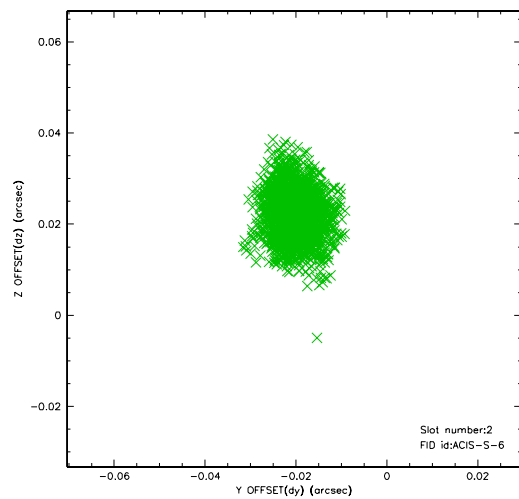
2.5.1 Slot 0



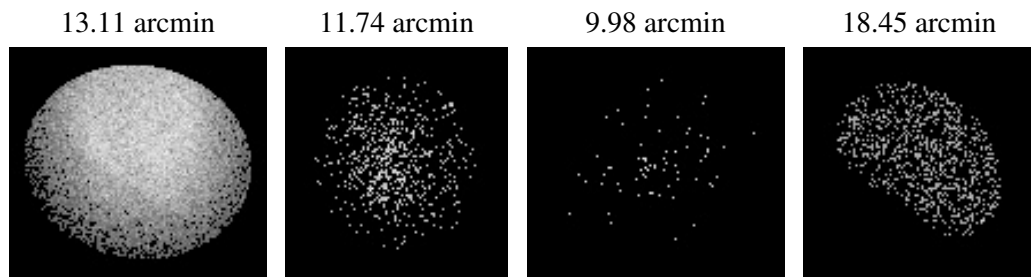
2.5.2 Slot 1



2.5.3 Slot 2



3 Point Sources



A Summary

A.1 Status

V&V Scientist	Joy Nichols
V&V Date (YYYY-MM-DD)	2010.10.01
V&V Edition	3
V&V Disposition and Status	OK
V&V Charge Time	6.6

A.2 Comments

Charge time for this ObsId remains at the original value 6.6 ks, but with the current processing the charge time would have been 7.75 ksec.
===

There are 2 observations with the obsid number 1312. They appear in separate spacecraft loads with these duplicate numbers. Because the 2 obsids used different instrument configurations, the telemetry file of the other obsid 1312 was edited to create a new obsid number, obsid 62865. This obsid retains the 1312 designation.