

V&V Reference Report

L2 ASCDS Version : 8.4.3

Observation 13102 - L2 Version 4
Chandra X-Ray Center

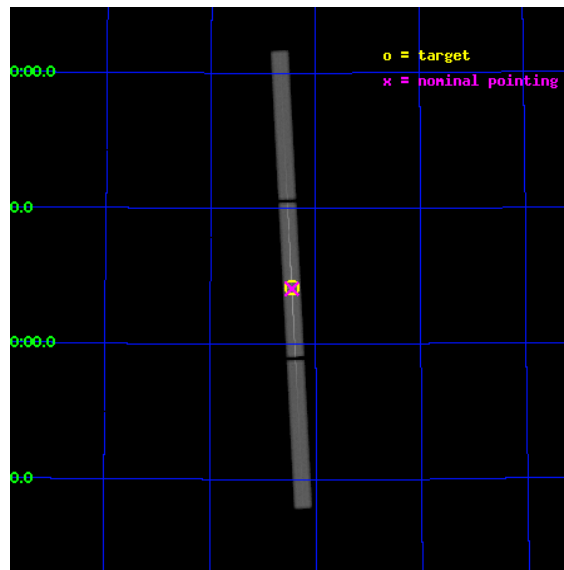
L2 Processing Date : Aug 9 2012

Contents

1	Front	2
2	OBI	3
2.1	OBI	3
2.1.1	Images	3
2.1.2	Parameters	4
2.1.3	Events	4
2.2	Compared Parameters	5
2.3	Aspect	6
2.4	Star Slots	9
2.4.1	Slot 3	9
2.4.2	Slot 4	10
2.4.3	Slot 5	11
2.4.4	Slot 6	12
2.4.5	Slot 7	13
2.5	FID Slots	14
2.5.1	Slot 0	14
2.5.2	Slot 1	15
2.5.3	Slot 2	16
3	Gratings	17
3.1	LETG Arm	17
A	Summary	19
A.1	Status	19
A.2	Comments	19

1 Front

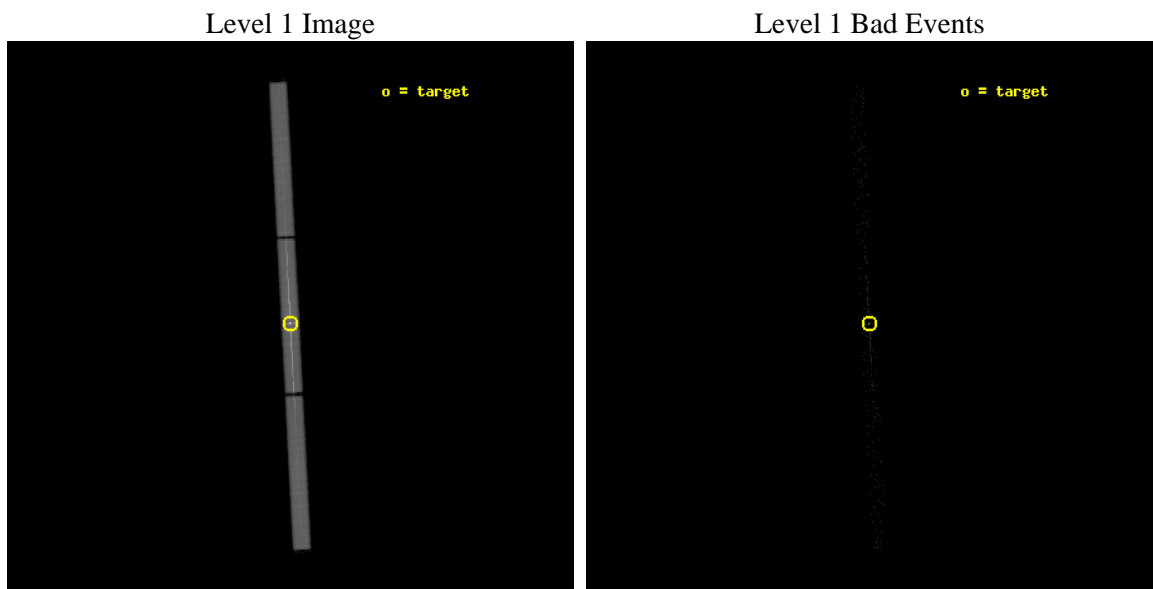
seq_num	790232	Sequence number
obs_id	13102	Observation id
title	AO-12 Calibration Observations of Mkn421	Proposal title
observer	Dr. CXC Calibration	Principal investigator
object	MKN421	Source name
ra_targ	166.113333	Observer's specified target RA [deg]
dec_targ	38.208806	Observer's specified target Dec [deg]
ra_nom	166.11303877404	Nominal RA [deg]
dec_nom	38.203889799336	Nominal Dec [deg]
roll_nom	266.93942007071	Nominal Roll [deg]
revision	4	Processing version of data
ontime	10183.119280398	[s]
livetime	10090.251276007	Ontime multiplied by DTCOR
l2events	861259	Number of level 2 events



2 OBI

2.1 OBI

2.1.1 Images



2.1.2 Parameters

obi_num	0	Obi number	sched_exp_time	10000.000000	[s] Scheduled observation exposure time
ascdsver	8.4.5	Processing system revision	ontime	10183.119280398	[s]
caldsver	4.5.1.1	 	l1events	1090019	Number of level 1 events
date	2012-08-10T01:01:55	Date and time of file creation			
revision	4	Processing version of data			

2.1.3 Events

Level 1 Events

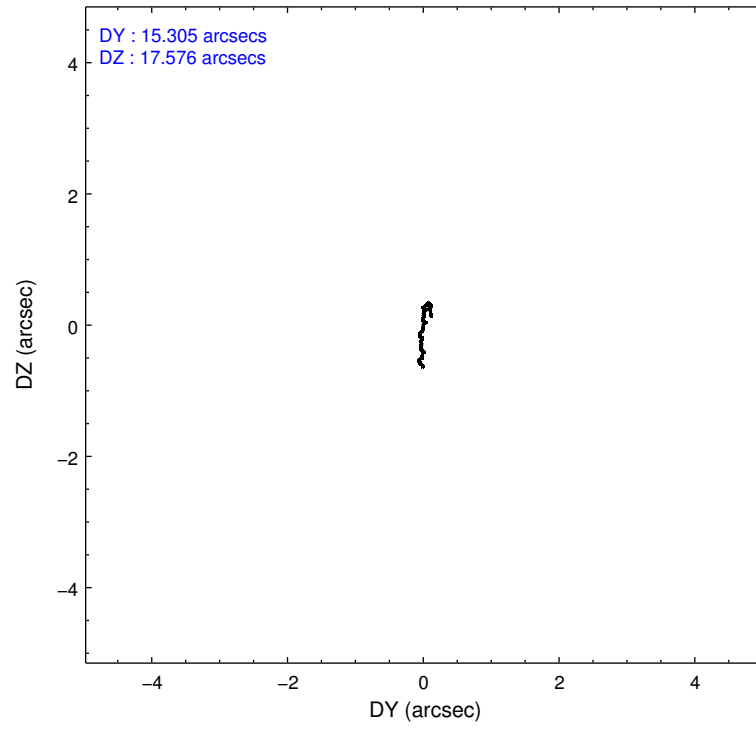
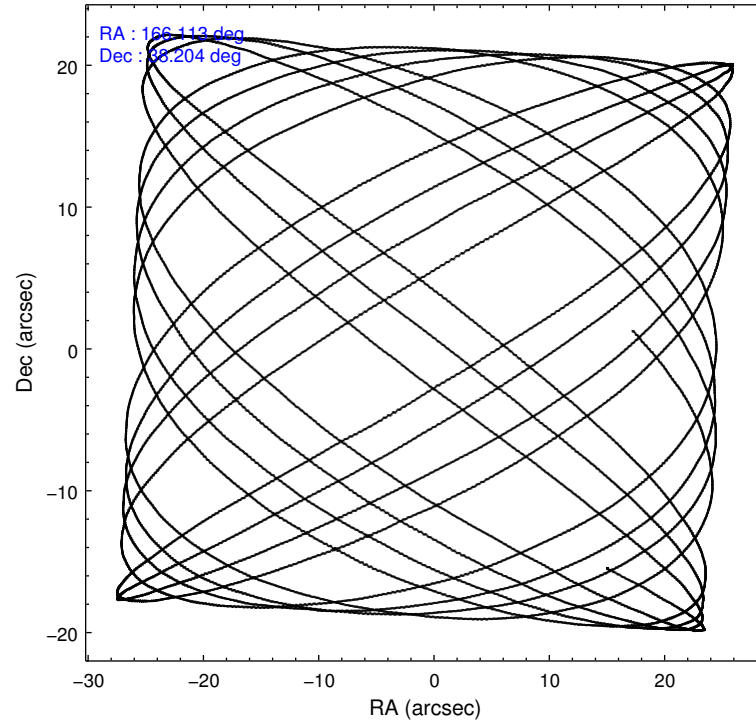
	segment 1	segment 2	segment 3
level 1 events	308286	466327	315406
rejected events	9432	12201	9370
rejected %	3%	2%	2%

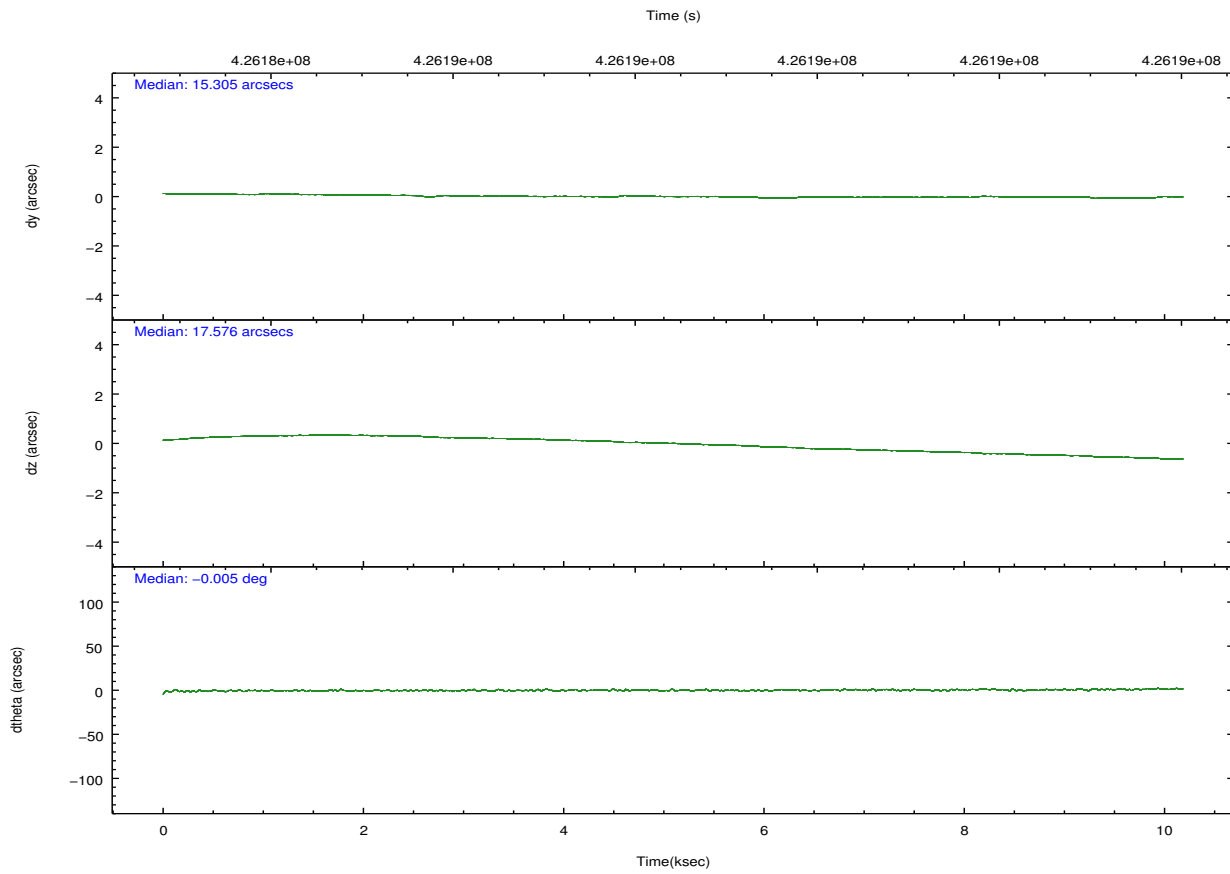
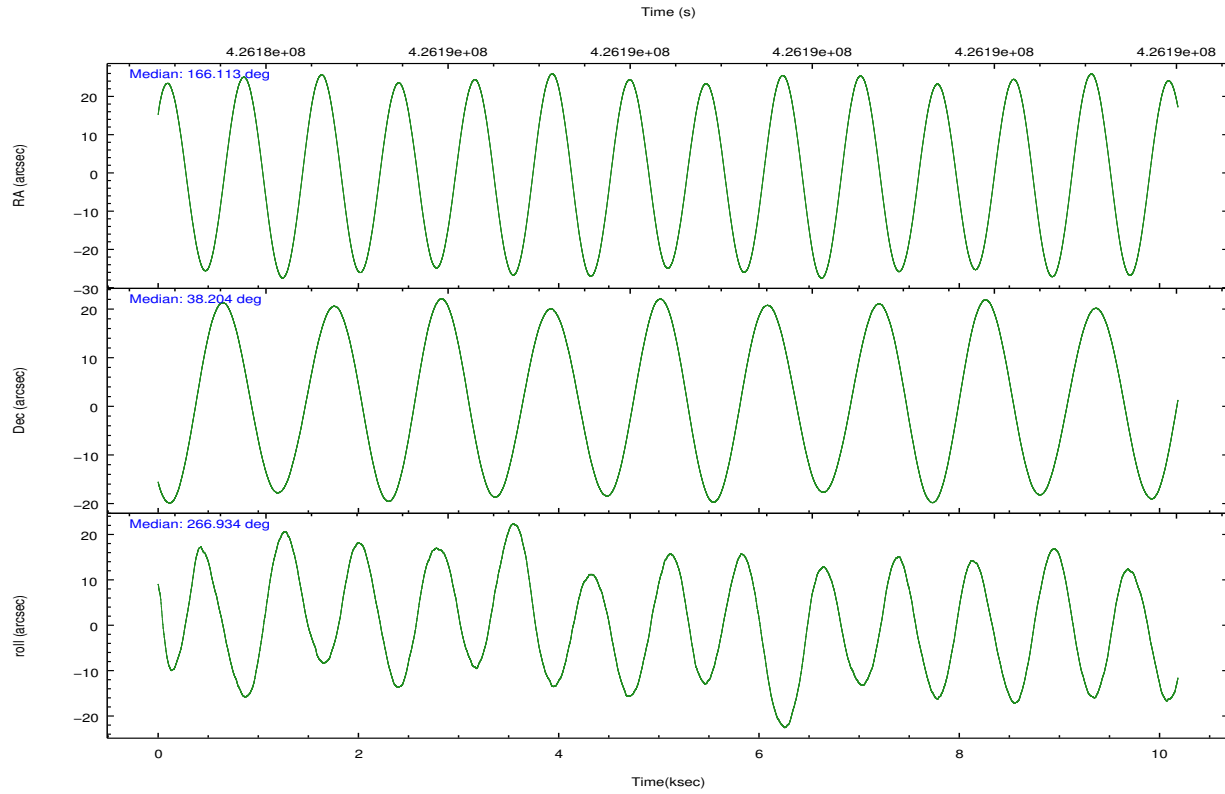
2.2 Compared Parameters

Parameter	Planned	Actual
Instrument	HRC	HRC
Detector	HRC-S	HRC-S
Grating	LETG	LETG
Data mode	OBSERVING	OBSERVING
Observation mode	POINTING	POINTING
[deg] Pointing RA	166.094763	166.1130387740391
[deg] Pointing Dec	38.228969	38.20388979933625
[deg] Pointing Roll	266.883392	266.9394200707096
[mm] SIM focus pos	-1.429586	-1.428180813131781
[mm] SIM defocus	0.1037507710433287	0.1051558262725154
[mm] SIM translation stage pos	250.455976	250.466033080201
[mm] SIM translation stage offset	0	-0.01005468664627074
[s] Observation start time (MET)	426183512.184000	426183046.3125
Observation start date	2011-07-04T16:17:26	2011-07-04T16:10:46
[s] Observation end time (MET)	426193512.184000	426193774.47556
Observation end date	2011-07-04T19:04:06	2011-07-04T19:09:34

Parameter	Planned	Actual
Obspar format version number	7	7
Obspar file type	PREDICTED	ACTUAL
Obspar update status	NONE	UPDATED

2.3 Aspect



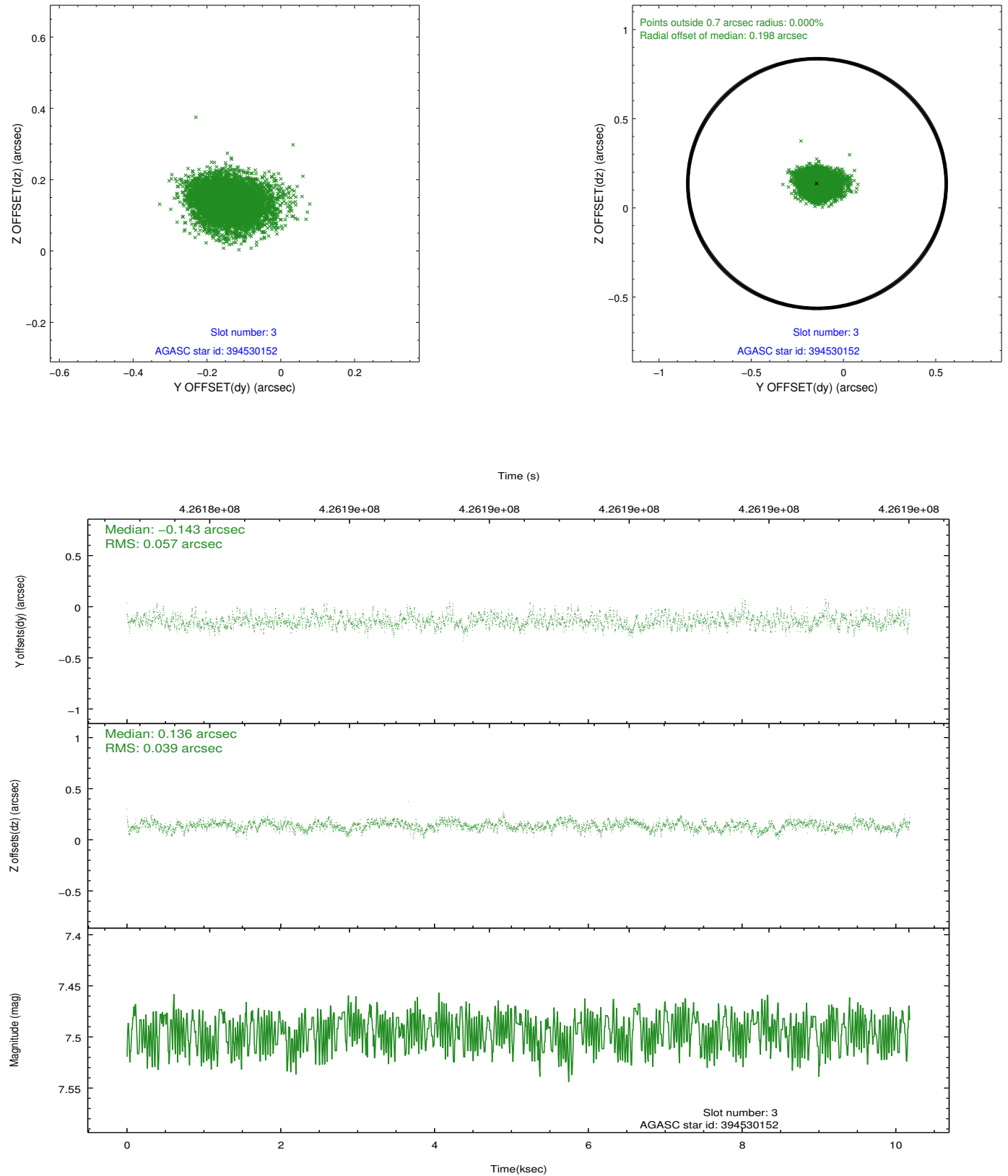


Slot Statistics

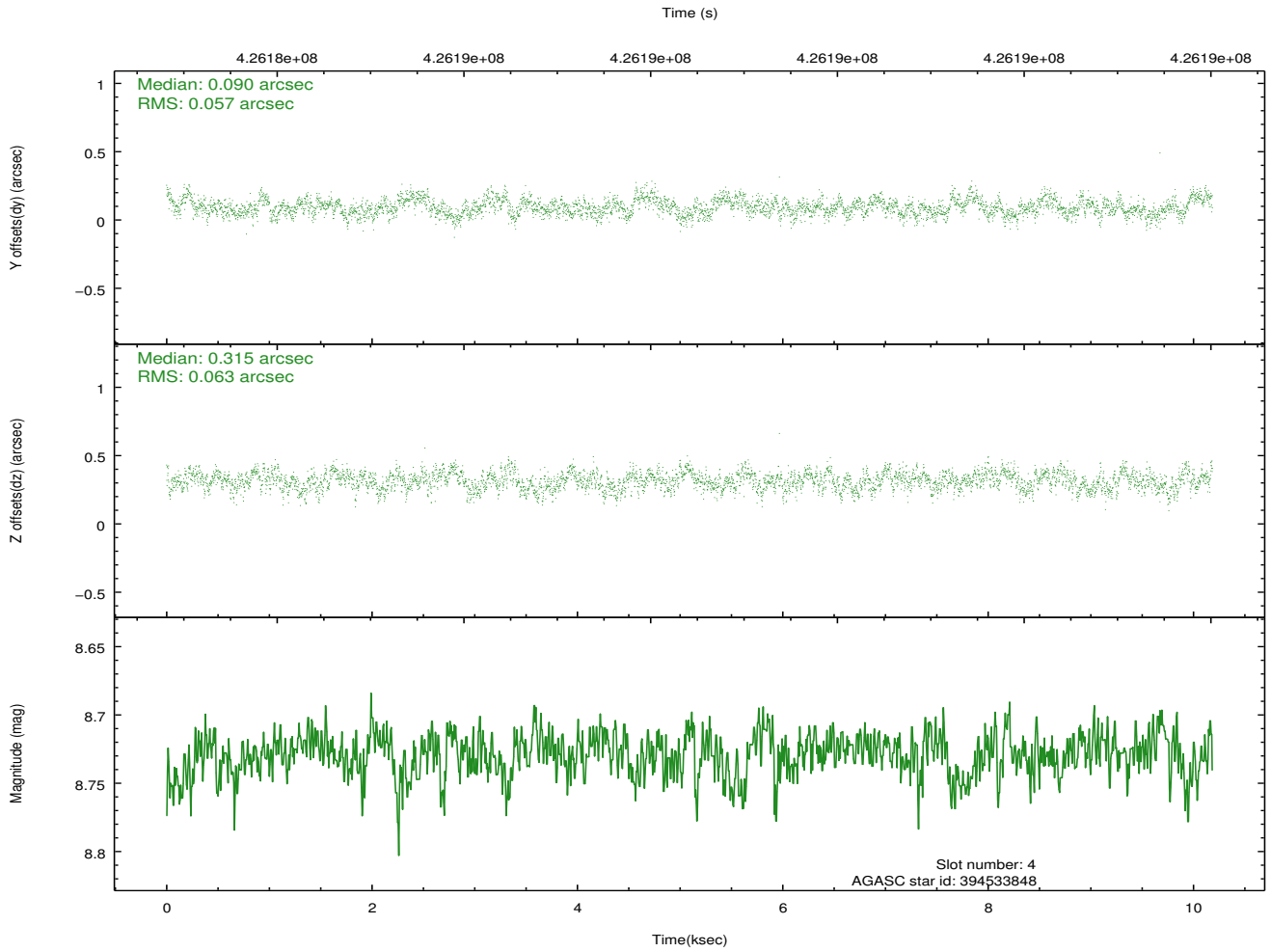
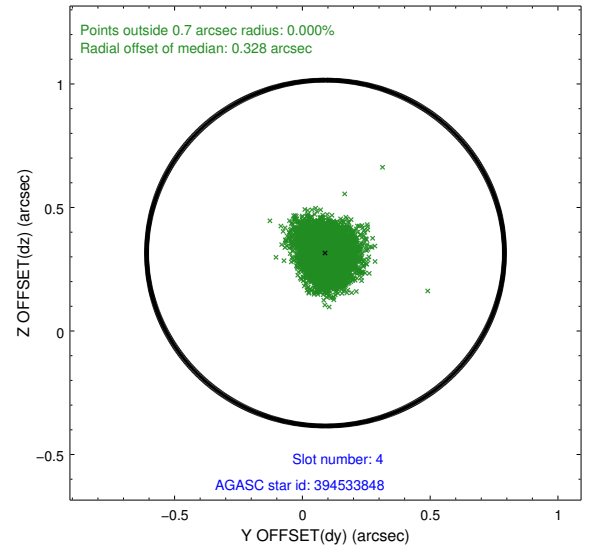
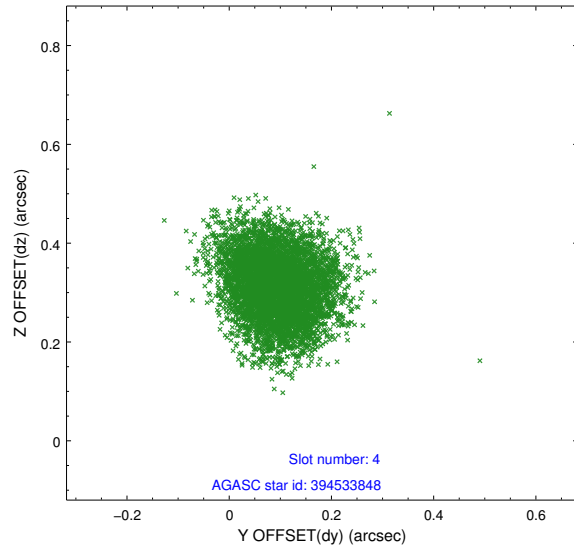
slot	status	id	mag	n_pts	med_dy	med_dz	dr1	dr2	ra	dec	mean_y	mean_z
0	FID	HRC-S-1	7.00	2484	0.052	-0.150	0.010	0.016	0.000000	0.000000	-1169.73	-466.47
1	FID	HRC-S-2	6.99	2484	0.218	-0.105	0.006	0.010	0.000000	0.000000	1229.64	-459.19
2	FID	HRC-S-3	7.02	2484	0.119	-0.047	0.010	0.016	0.000000	0.000000	-1171.92	562.98
3	GUIDE	394530152	7.49	4969	-0.143	0.136	0.073	0.119	166.075805	38.868252	-2295.54	-178.38
4	GUIDE	394533848	8.73	4967	0.090	0.315	0.091	0.145	166.382906	38.276007	-215.84	800.08
5	GUIDE	394543960	9.78	4941	0.145	0.213	0.148	0.244	165.802757	37.787371	1631.12	-742.83
6	GUIDE	394546712	6.60	4969	-0.157	0.235	0.066	0.112	166.451462	38.394357	-651.12	971.52
7	GUIDE	394546720	6.41	4968	0.056	-0.897	0.101	0.168	166.130115	38.241361	-50.36	96.56

2.4 Star Slots

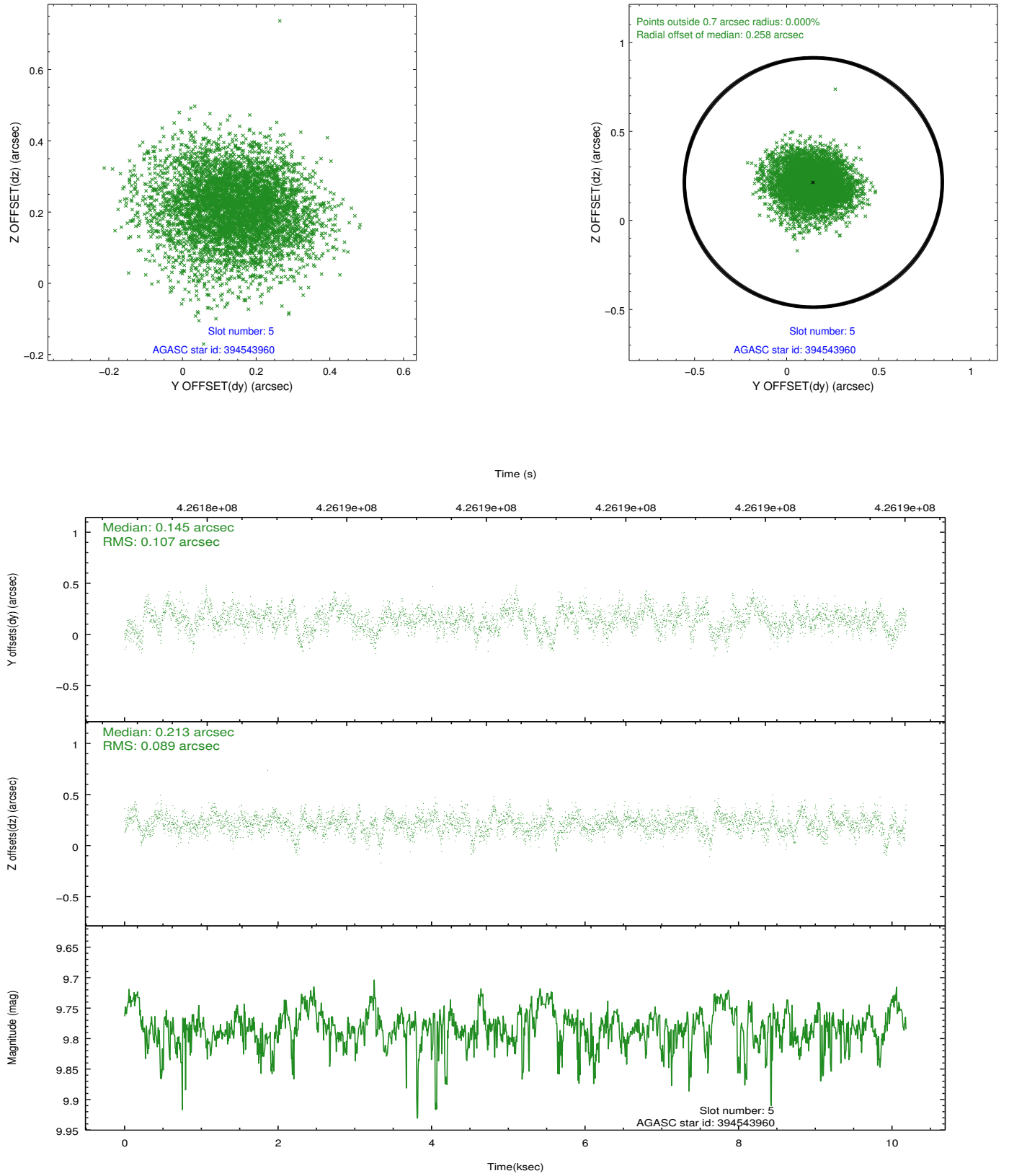
2.4.1 Slot 3



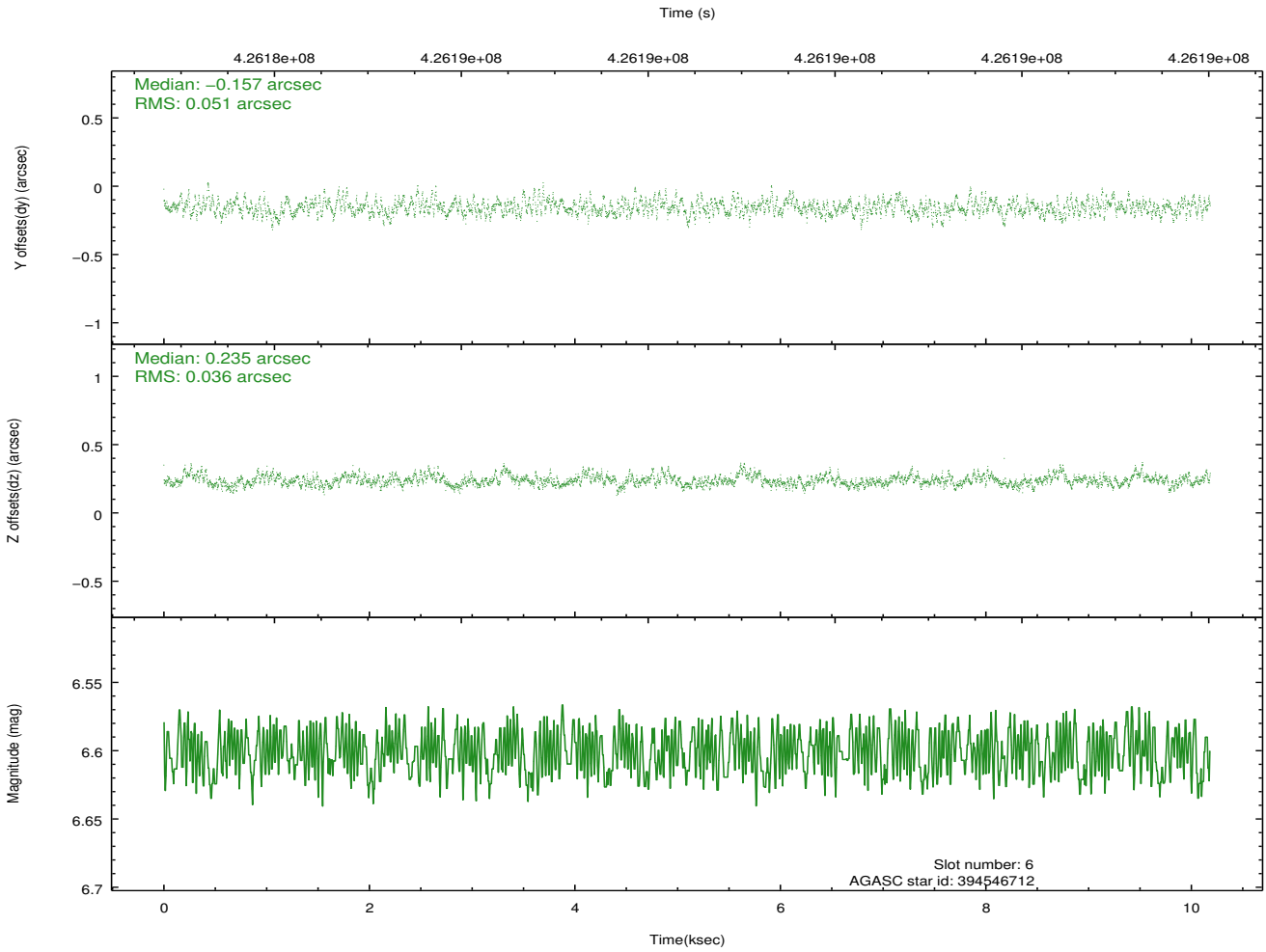
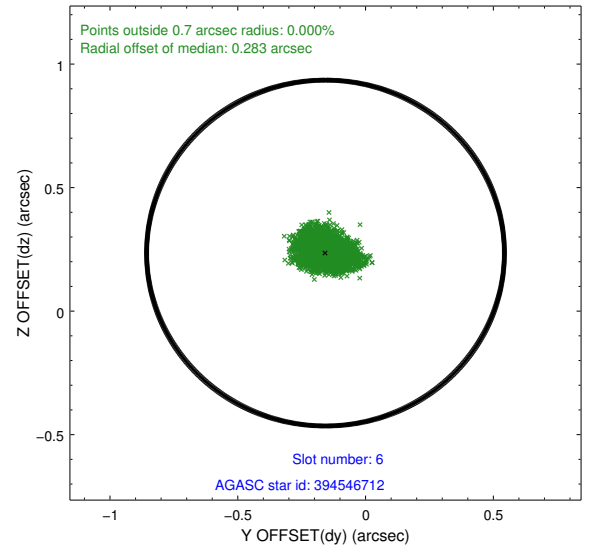
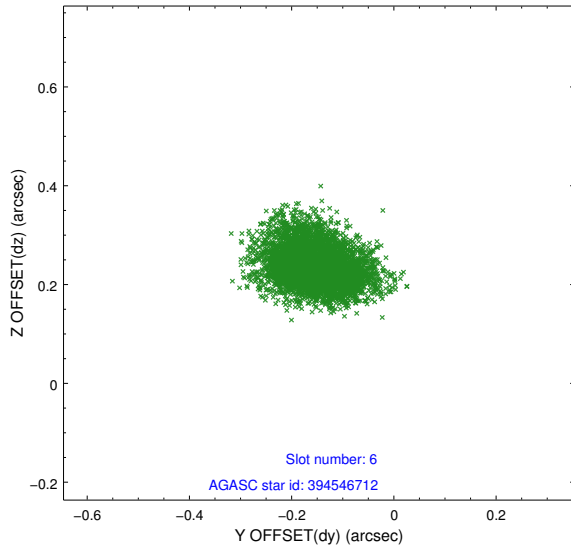
2.4.2 Slot 4



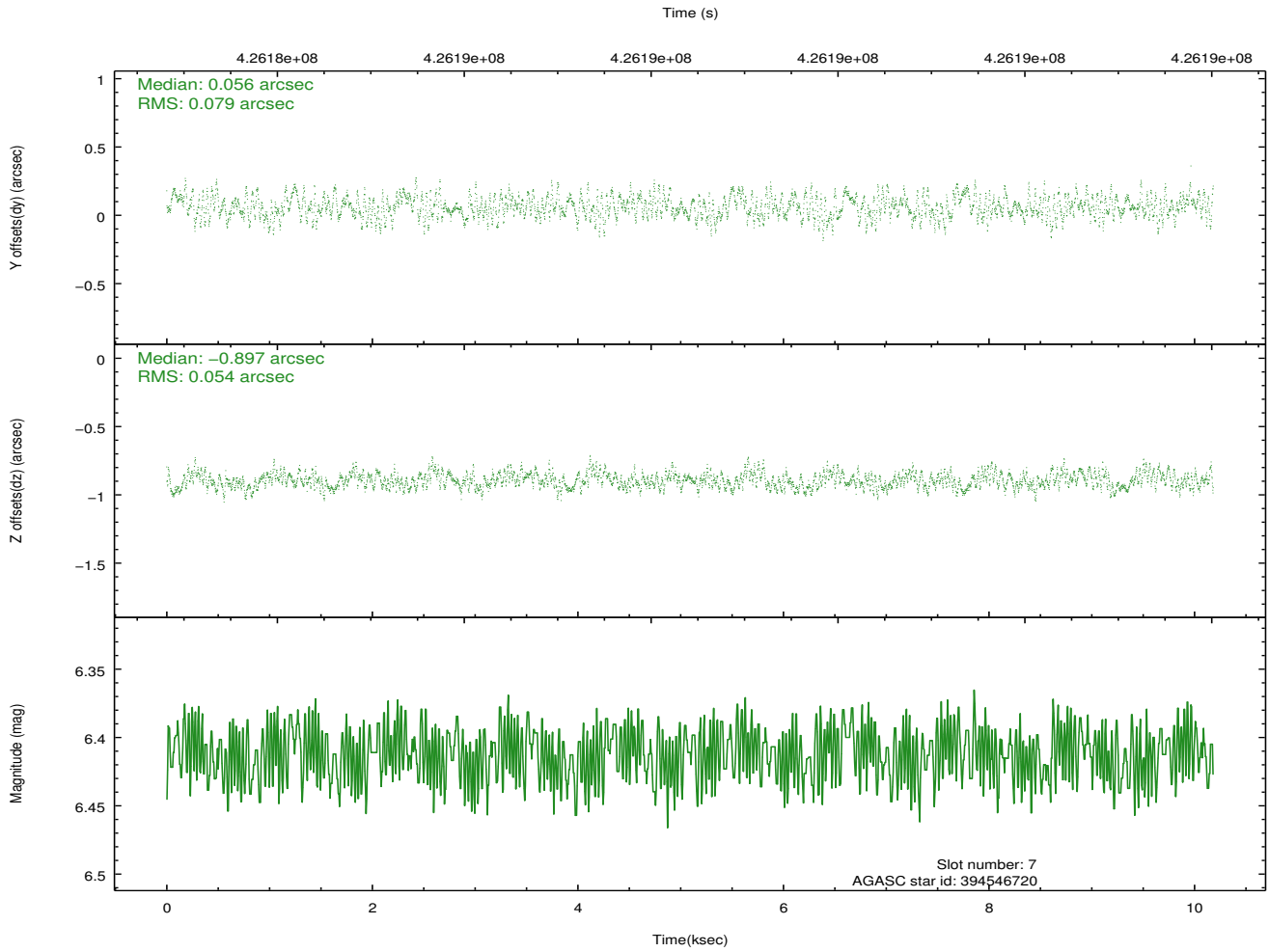
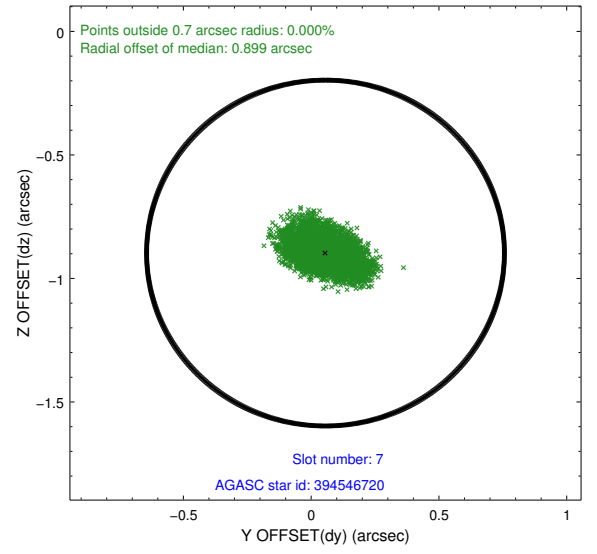
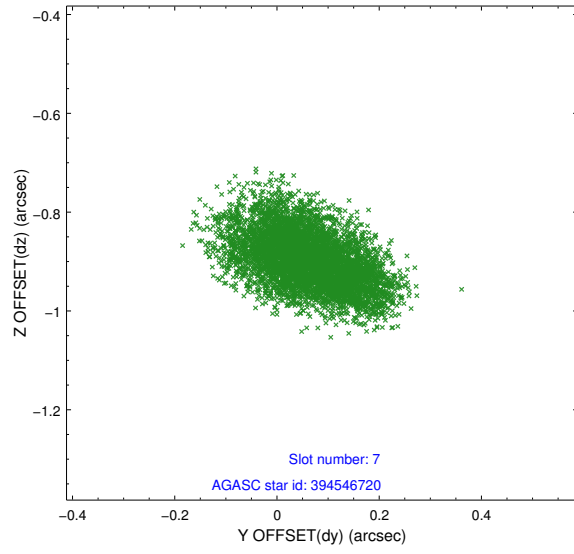
2.4.3 Slot 5



2.4.4 Slot 6

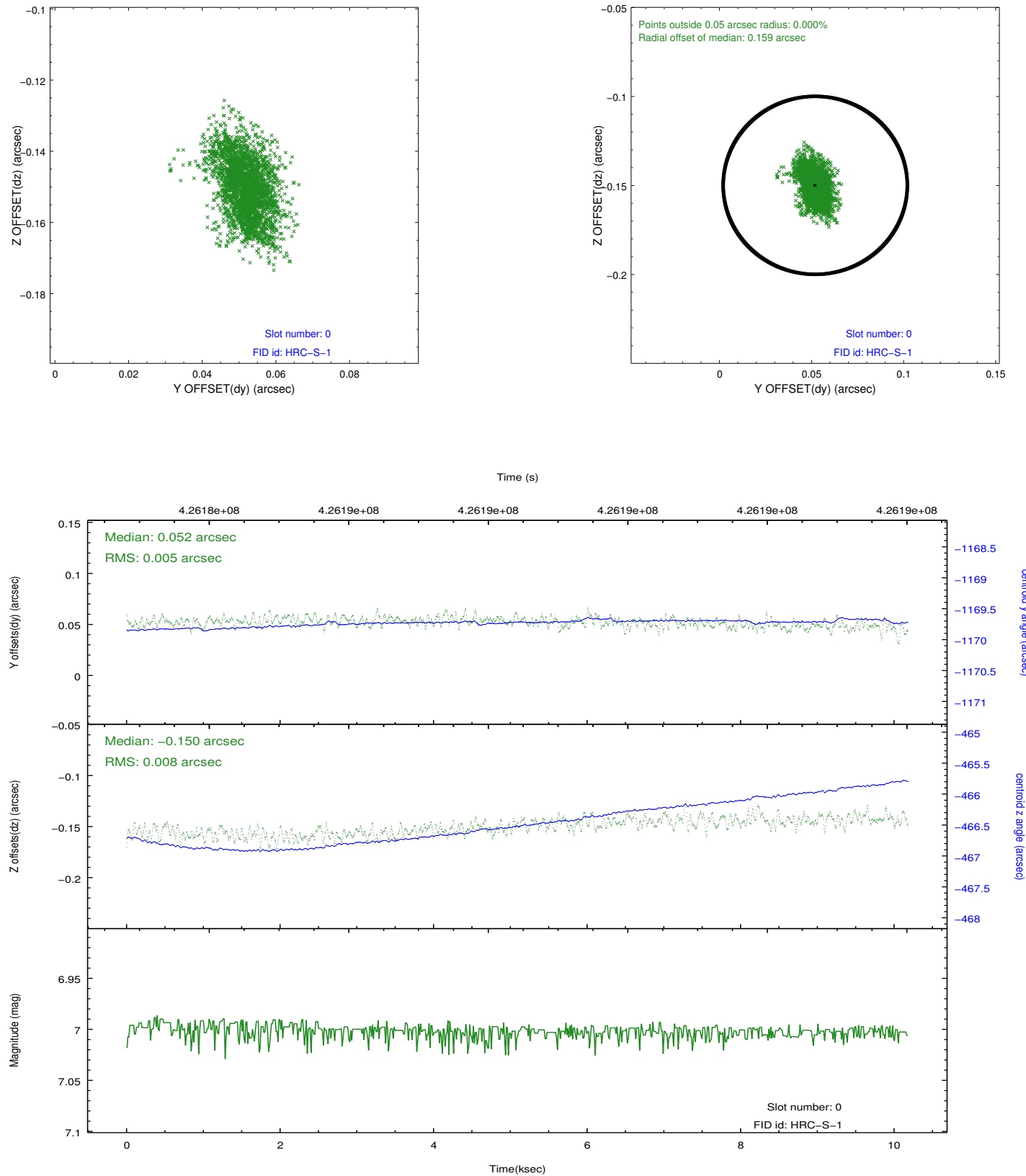


2.4.5 Slot 7

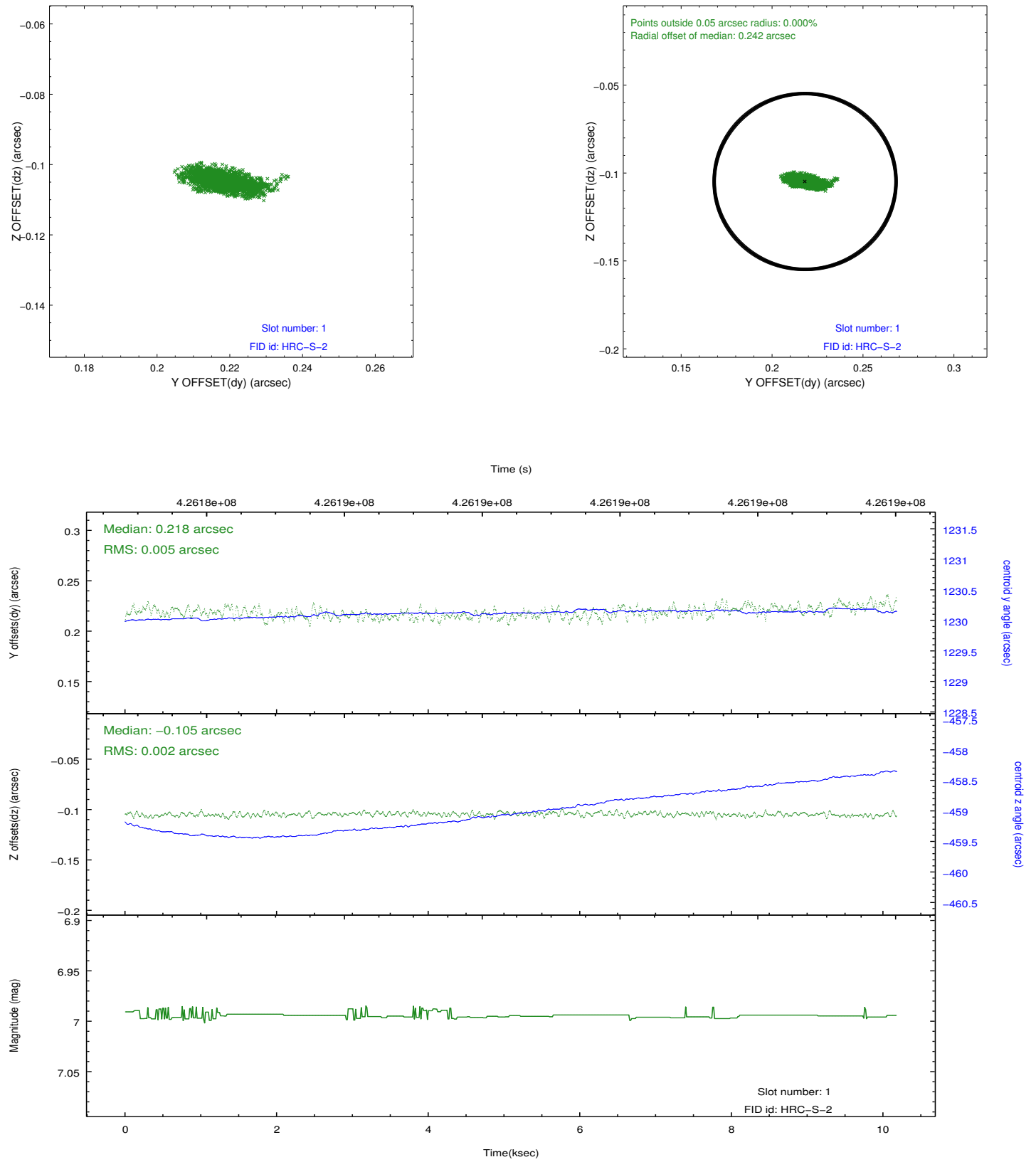


2.5 FID Slots

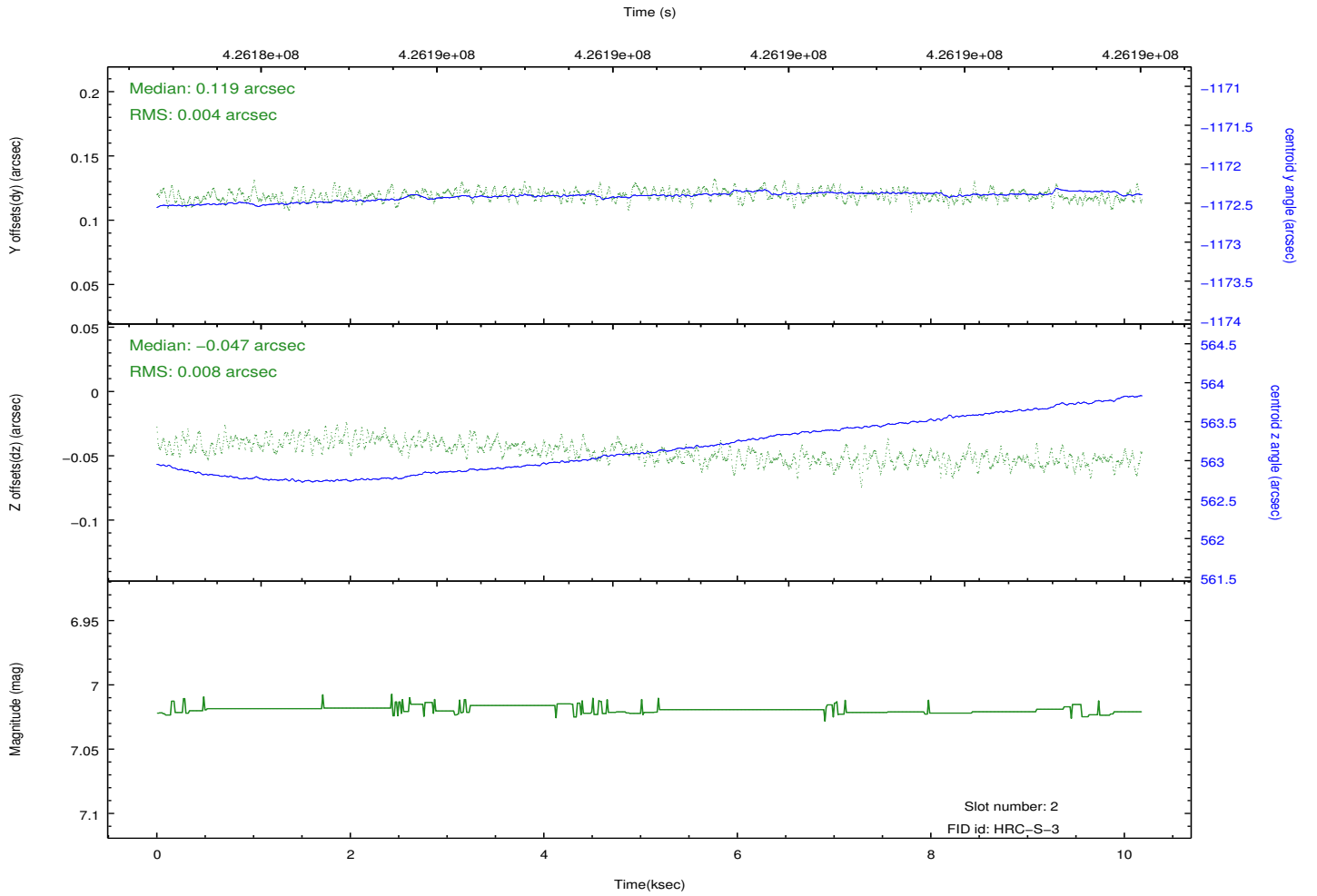
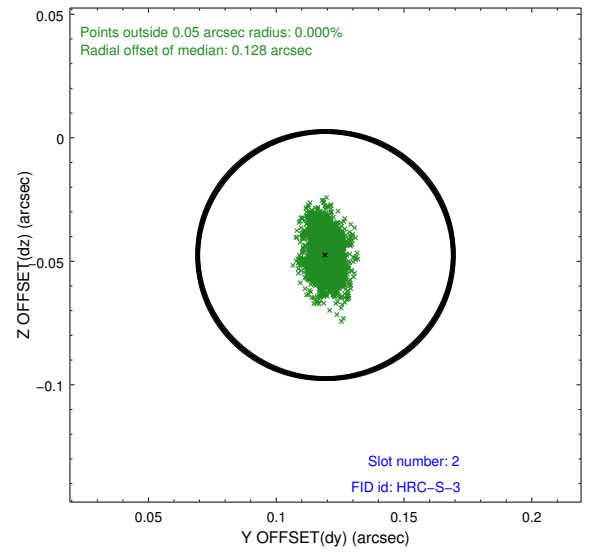
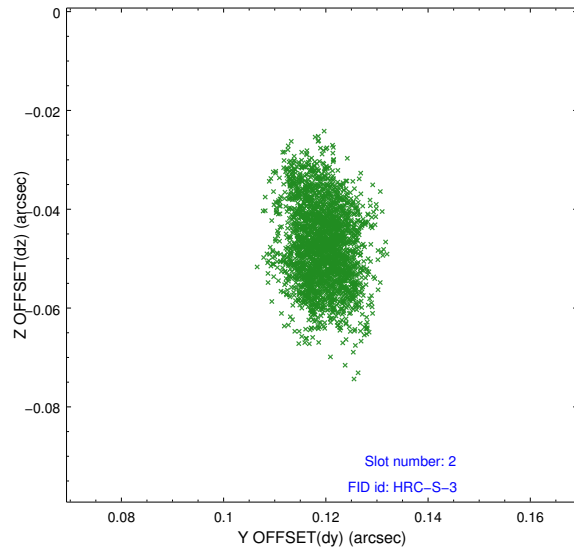
2.5.1 Slot 0



2.5.2 Slot 1

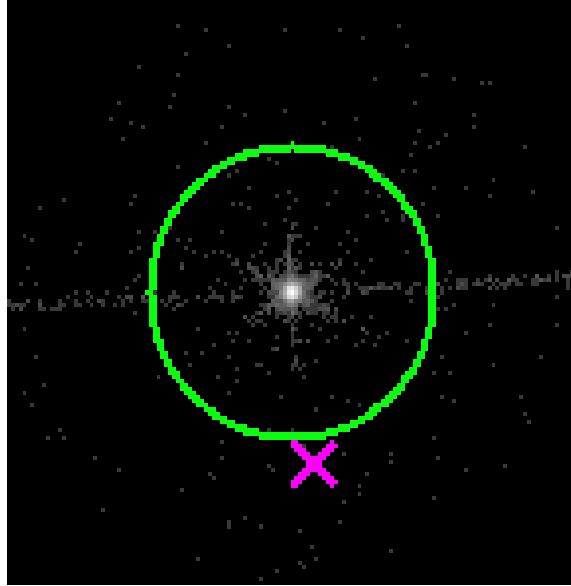


2.5.3 Slot 2

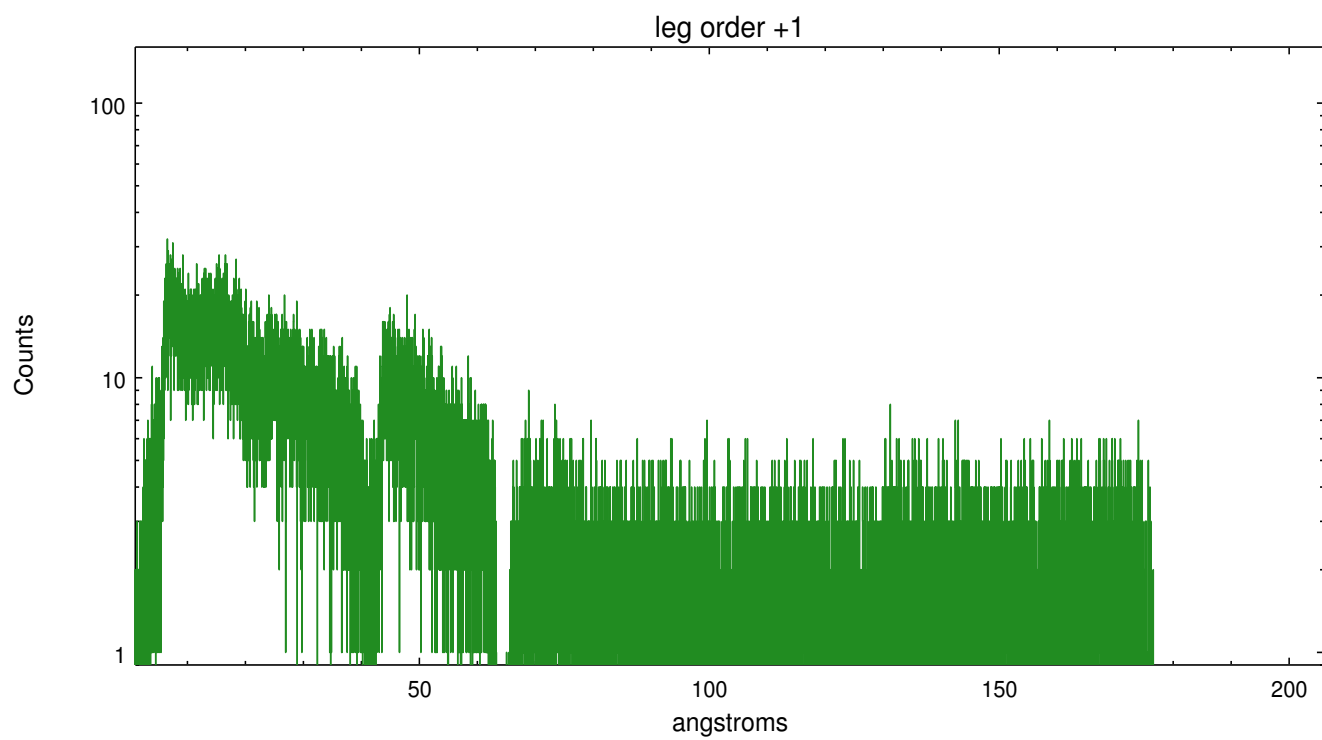
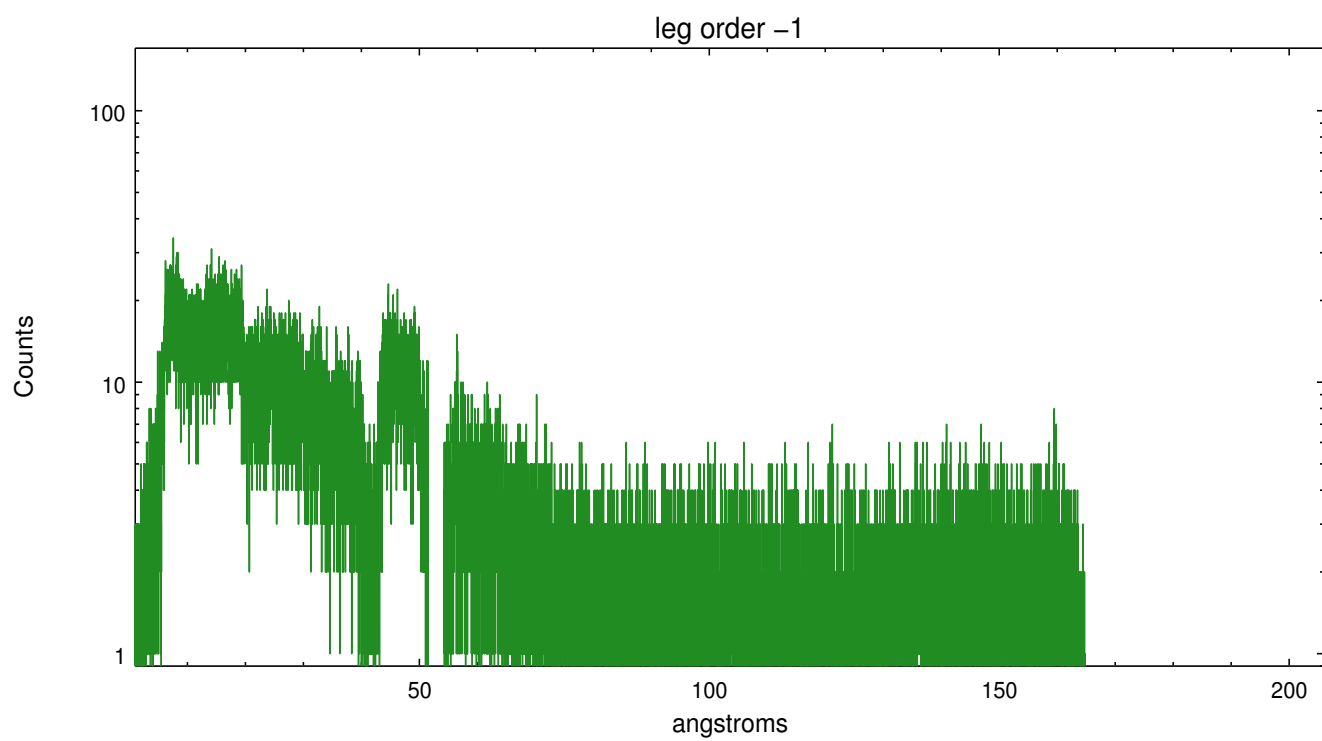


3 Gratings

3.1 LETG Arm



LETG Zero Order



A Summary

A.1 Status

V&V Scientist	Joy Nichols
V&V Date (YYYY-MM-DD)	2012.08.10
V&V Edition	1
V&V Disposition and Status	OK
V&V Charge Time	10.183119281292

A.2 Comments