

# V&V Reference Report

## L2 ASCDS Version : 8.2.1

Observation 1282 - L2 Version 2

Chandra X-Ray Center

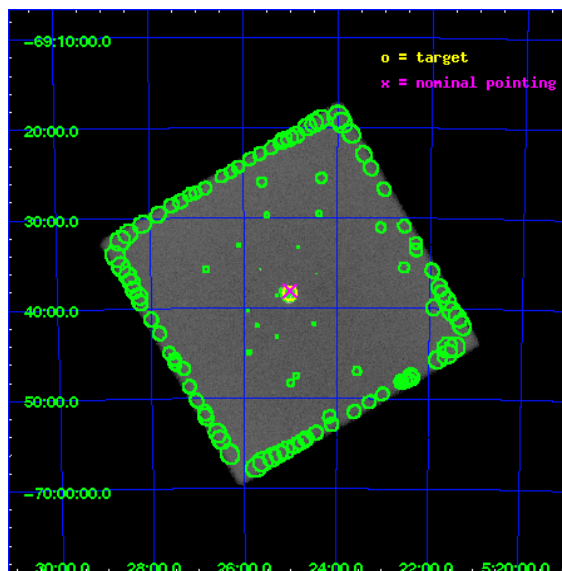
L2 Processing Date : Jan 12 2010

## Contents

<b>1</b>	<b>Front</b>	<b>2</b>
<b>2</b>	<b>OBI</b>	<b>3</b>
2.1	OBI . . . . .	3
2.1.1	Images . . . . .	3
2.1.2	Parameters . . . . .	4
2.1.3	Events . . . . .	4
2.2	Compared Parameters . . . . .	5
2.3	Aspect . . . . .	6
2.4	Star Slots . . . . .	9
2.4.1	Slot 3 . . . . .	9
2.4.2	Slot 4 . . . . .	10
2.4.3	Slot 5 . . . . .	11
2.4.4	Slot 6 . . . . .	12
2.4.5	Slot 7 . . . . .	13
2.5	FID Slots . . . . .	14
2.5.1	Slot 0 . . . . .	14
2.5.2	Slot 1 . . . . .	15
2.5.3	Slot 2 . . . . .	16
<b>3</b>	<b>Point Sources</b>	<b>17</b>
<b>A</b>	<b>Summary</b>	<b>18</b>
A.1	Status . . . . .	18
A.2	Comments . . . . .	18

# 1 Front

seq_num	580232	Sequence number
obs_id	1282	Observation id
title	ACIS CHIP RESPONSE TO LINES WITH E=0.6-1.5 KEV	Proposal title
observer	Dr. CXC Calibration	Principal investigator
object	N132D	Source name
ra_targ	81.25	Observer's specified target RA
dec_targ	-69.64	Observer's specified target RA Dec
ra_nom	81.252496290018	Nominal RA
dec_nom	-69.635192688418	Nominal Dec
roll_nom	104.84144268893	Nominal Roll
revision	2	Processing version of data
ontime	22056.207042493	[s]
livetime	21778.901869735	Ontime multiplied by DTCOR
l2events	1225103	Number of level 2 events

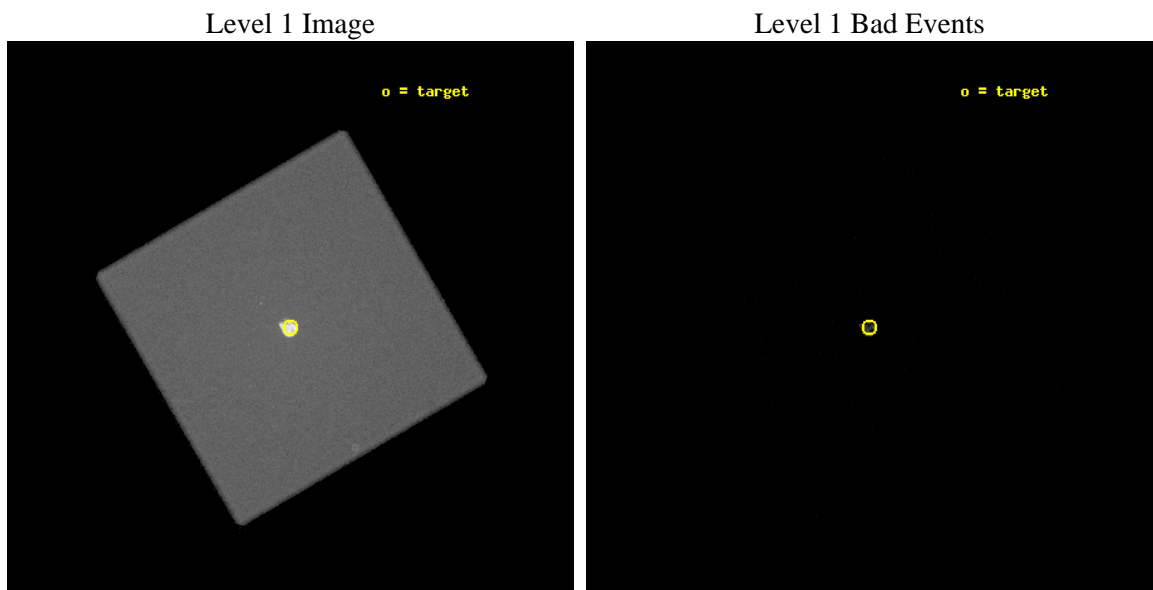




## 2 OBI

### 2.1 OBI

#### 2.1.1 Images



### 2.1.2 Parameters

obi_num	0	Obi number	sched_exp_time	20000.000000	Scheduled observation exposure time
ascdsver	8.2.1	Processing system revision	ontime	22056.207042493	[s]
caldbver	4.1.5	&#160	ll events	1929704	Number of level 1 events
date	2010-01-12T16:37:13	Date and time of file creation			
revision	3	Processing version of data			

### 2.1.3 Events

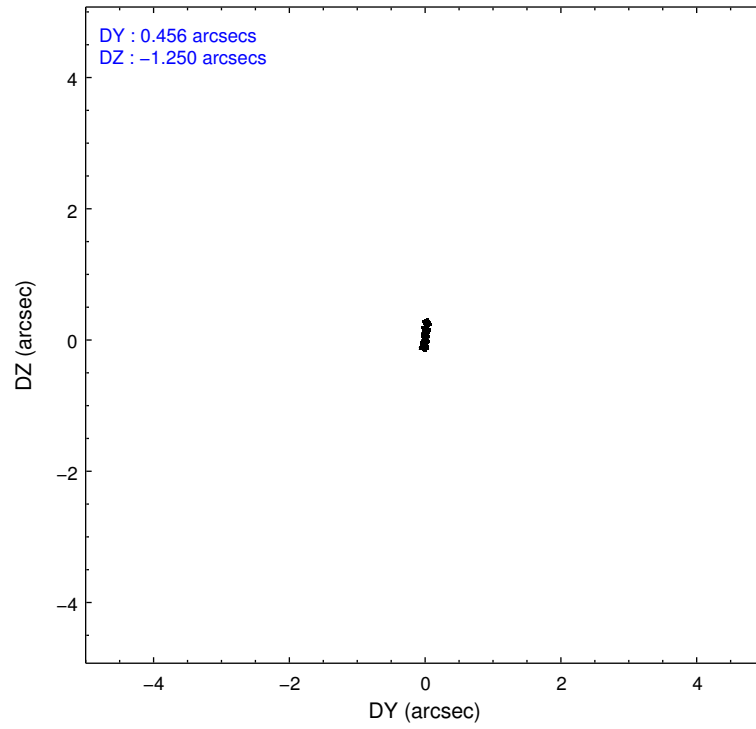
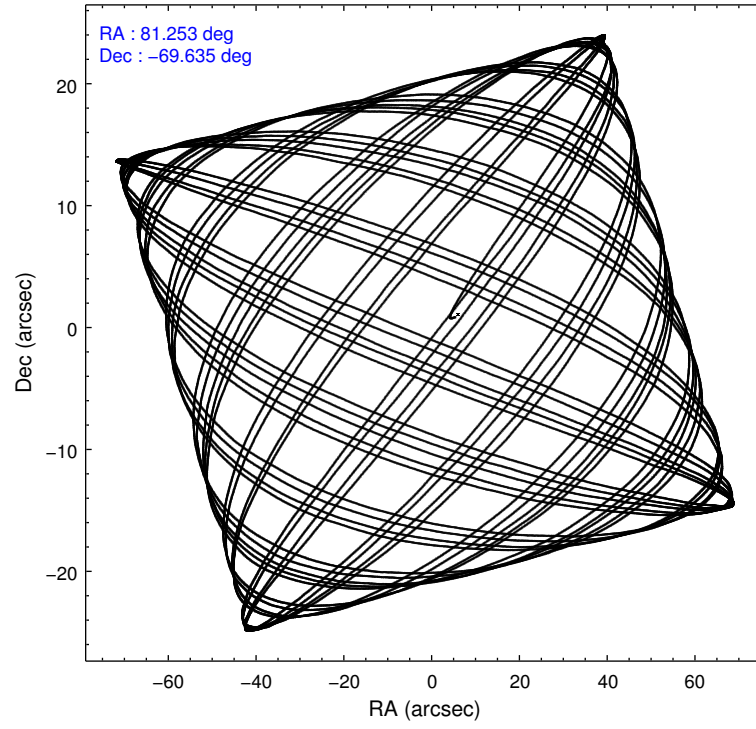
#### Level 1 Events

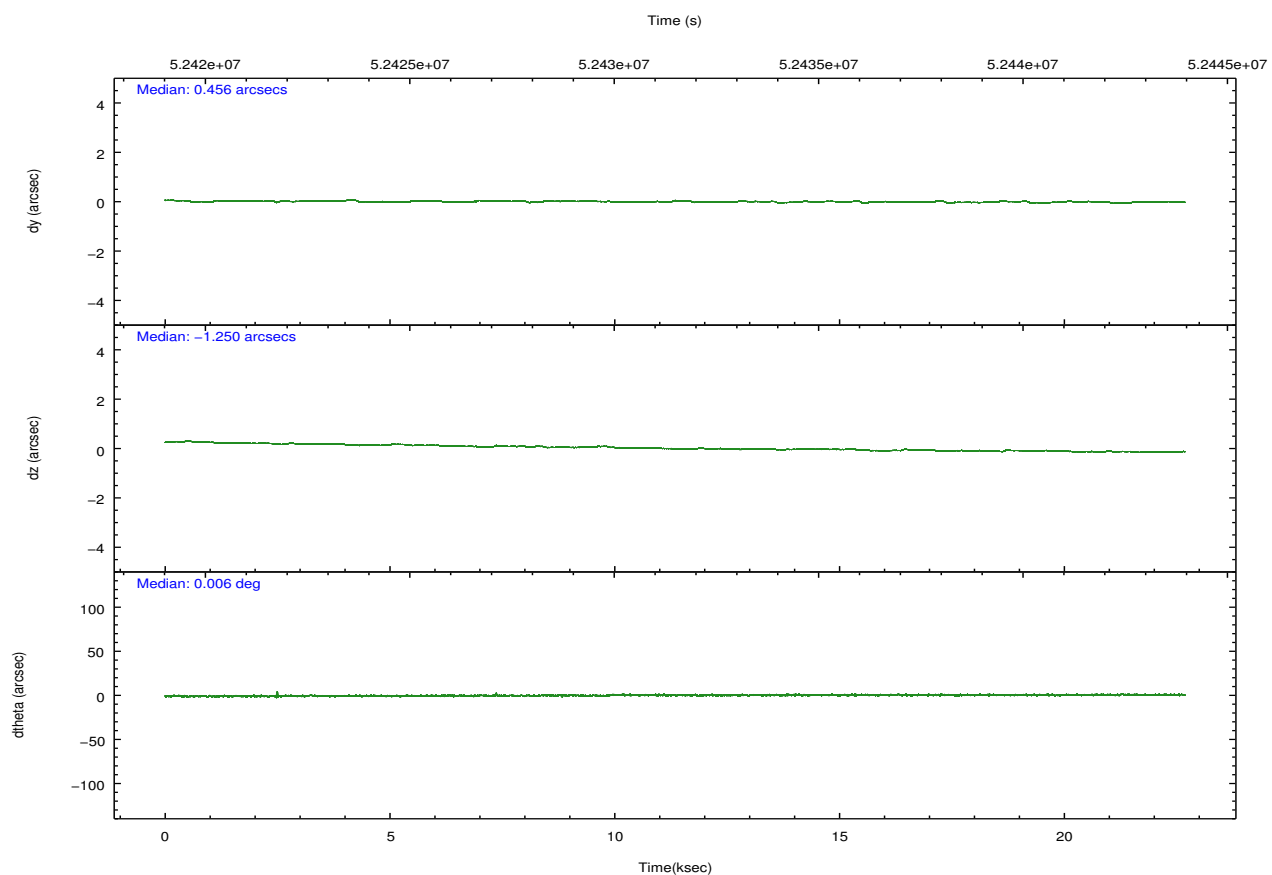
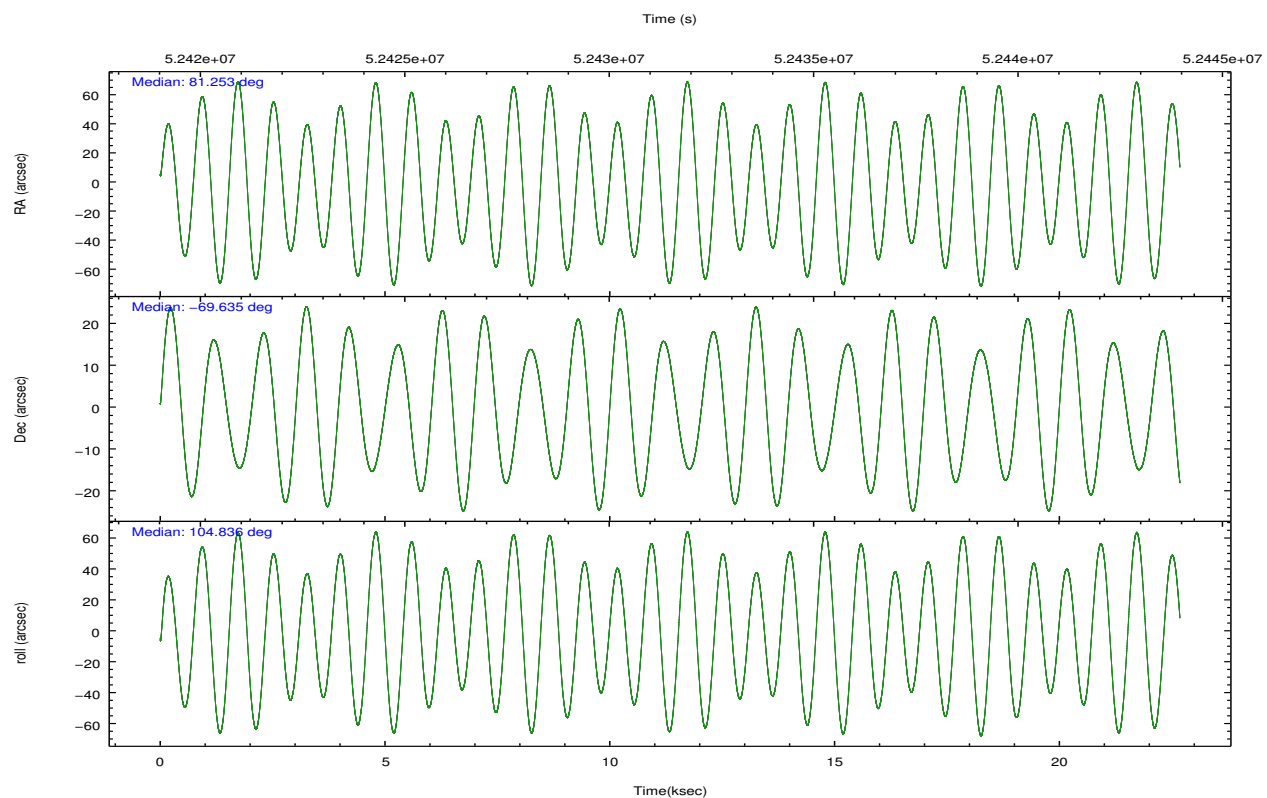
	<b>segment 0</b>
level 1 events	1929704
rejected events	3473
rejected %	0%

## 2.2 Compared Parameters

Parameter	Planned	Actual	Parameter	Planned	Actual
Instrument	HRC	HRC	Obspar format version number	6	6
Detector	HRC-I	HRC-I	Obspar file type	PREDICTED	ACTUAL
Grating	NONE	NONE	Obspar update status	NONE	UPDATED
Data mode	OBSERVING	OBSERVING			
Observation mode	POINTING	POINTING			
Pointing RA	81.307878	81.25249629001765			
Pointing Dec	-69.654631	-69.63519268841831			
Pointing Roll	104.988853	104.8414426889312			
SIM focus pos (mm)	-0.025969	-0.7362356599963374			
SIM defocus (mm)	1.014324	0.3040569606625371			
SIM translation stage pos (mm)	126.985494	126.9829799899862			
SIM translation stage offset (mm)	0	0.002508901615314585			
Observation start time	52420564.184000	52419910.520829			
Observation start date	1999-08-30T17:15:00	1999-08-30T17:05:10			
Observation end time	52442830.184000	52442980.709158			
Observation end date	1999-08-30T23:26:06	1999-08-30T23:29:40			

## 2.3 Aspect



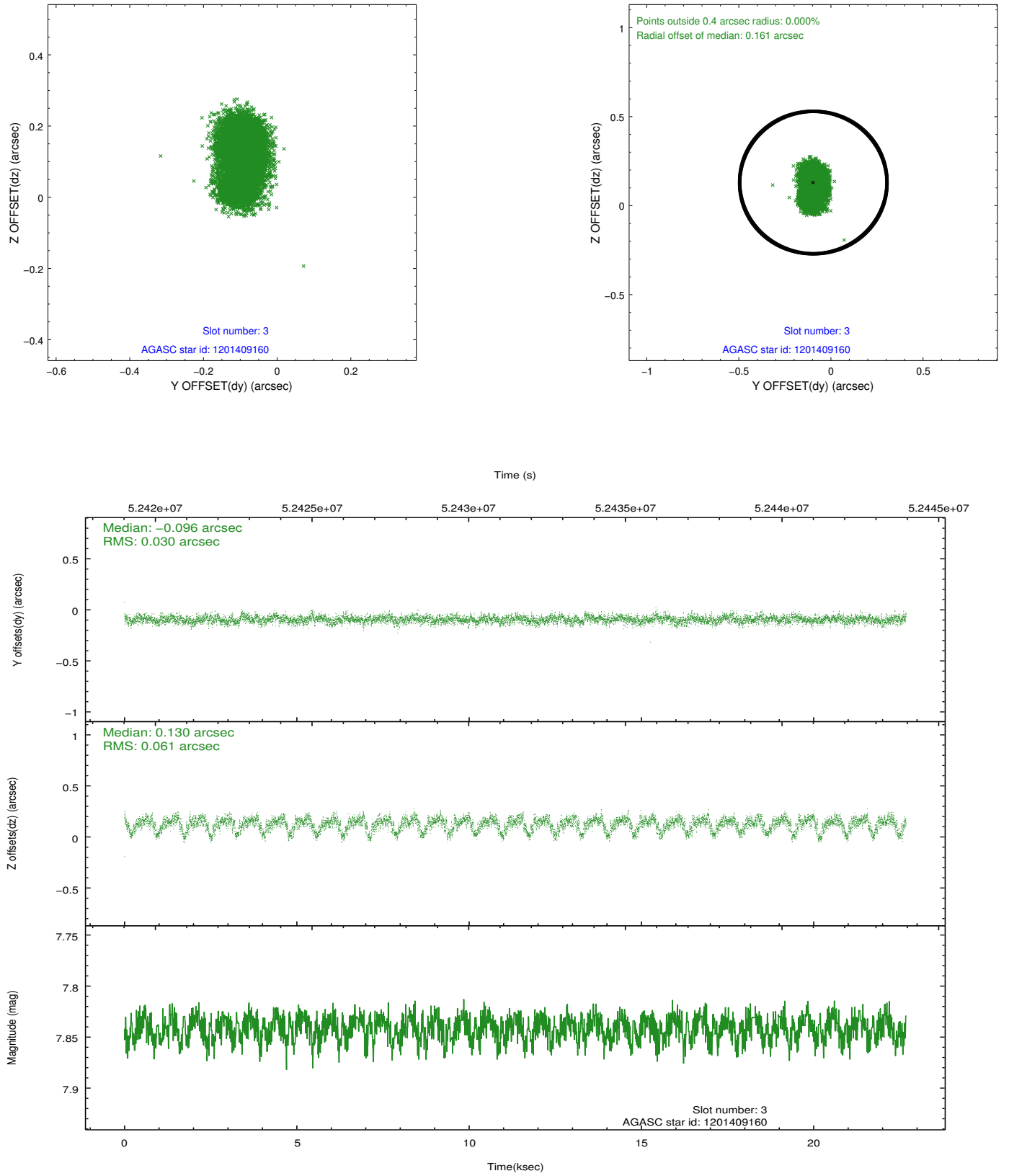


Slot Statistics

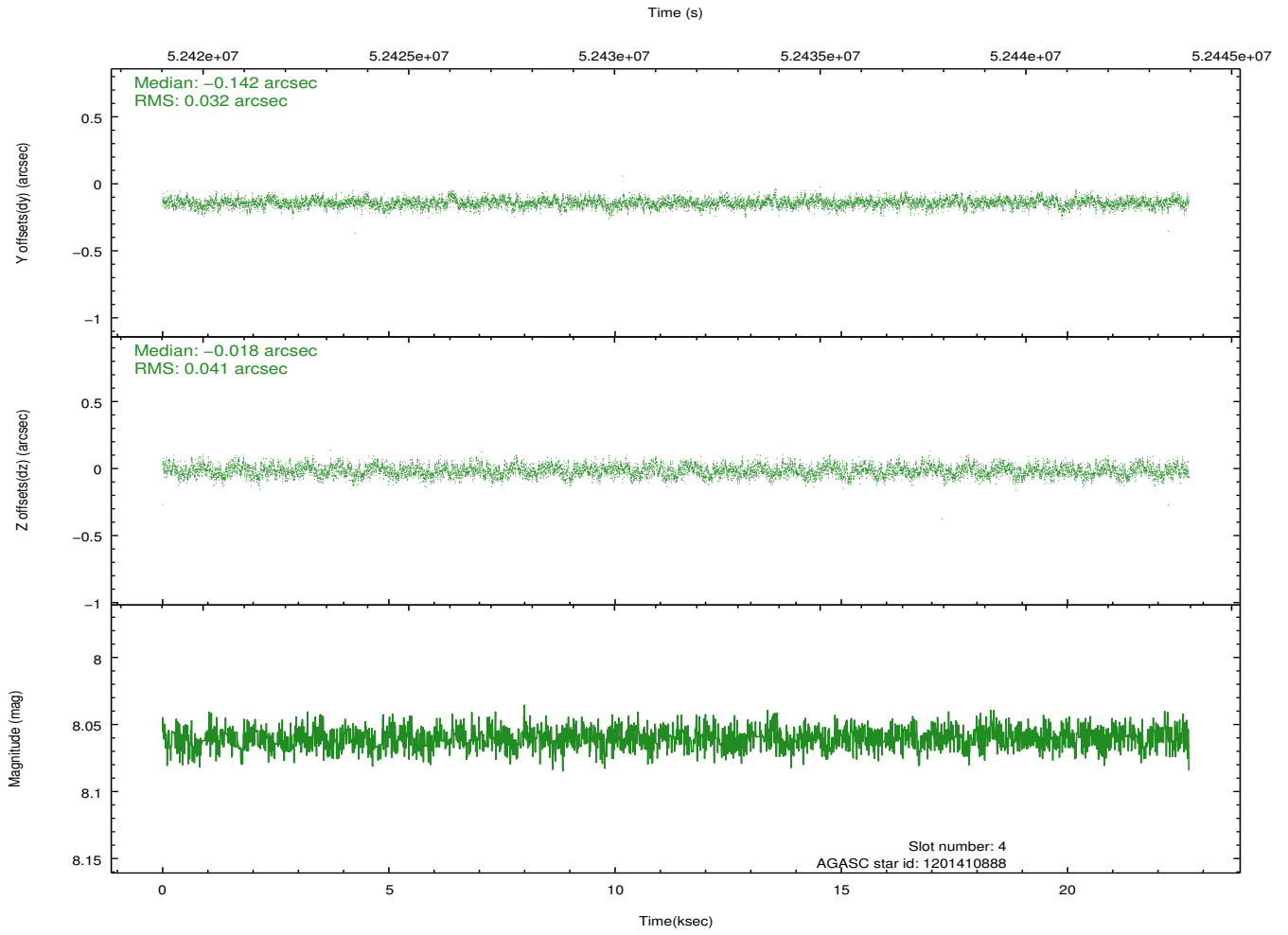
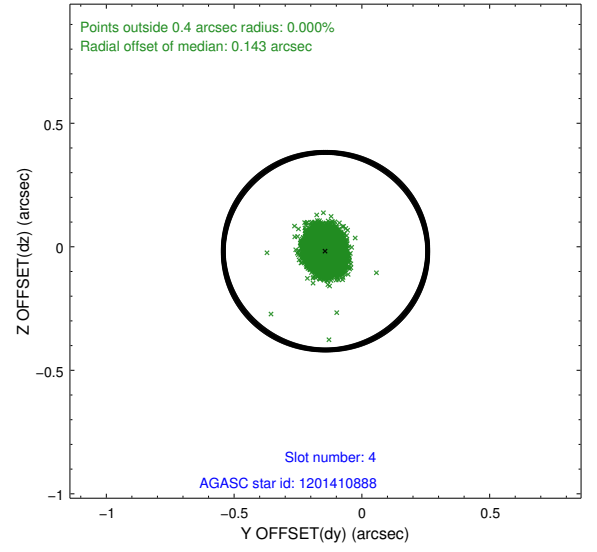
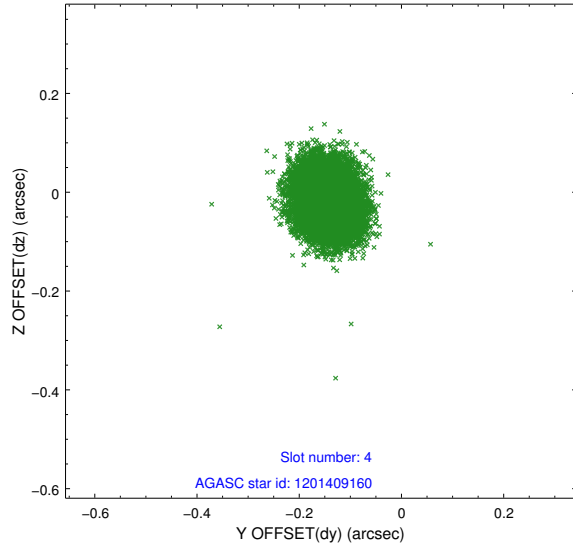
slot	status	id	mag	n_pts	med_dy	med_dz	dr1	dr2	ra	dec	mean_y	mean_z
0	FID	HRC-I-1	6.97	11064	0.033	-0.056	0.007	0.012	0.000000	0.000000	-755.80	-1286.52
1	FID	HRC-I-3	7.05	11063	0.066	-0.012	0.008	0.014	0.000000	0.000000	-1184.43	1018.03
2	FID	HRC-I-4	6.99	11064	0.015	-0.022	0.007	0.011	0.000000	0.000000	1286.83	1015.93
3	GUIDE	1201409160	7.84	11059	-0.096	0.130	0.070	0.127	81.660661	-70.063595	-1535.34	-36.47
4	GUIDE	1201410888	8.06	11063	-0.142	-0.018	0.056	0.089	81.046858	-70.018210	-1182.18	649.54
5	GUIDE	1201409312	9.25	11059	-0.008	-0.078	0.069	0.114	80.915231	-69.503059	653.56	338.24
6	GUIDE	1201411288	9.24	11053	0.084	0.078	0.073	0.117	81.410076	-69.595403	172.98	-178.12
7	GUIDE	1200887248	9.68	11053	0.163	-0.098	0.145	0.239	82.362845	-68.868028	2370.51	-2051.09

## 2.4 Star Slots

### 2.4.1 Slot 3

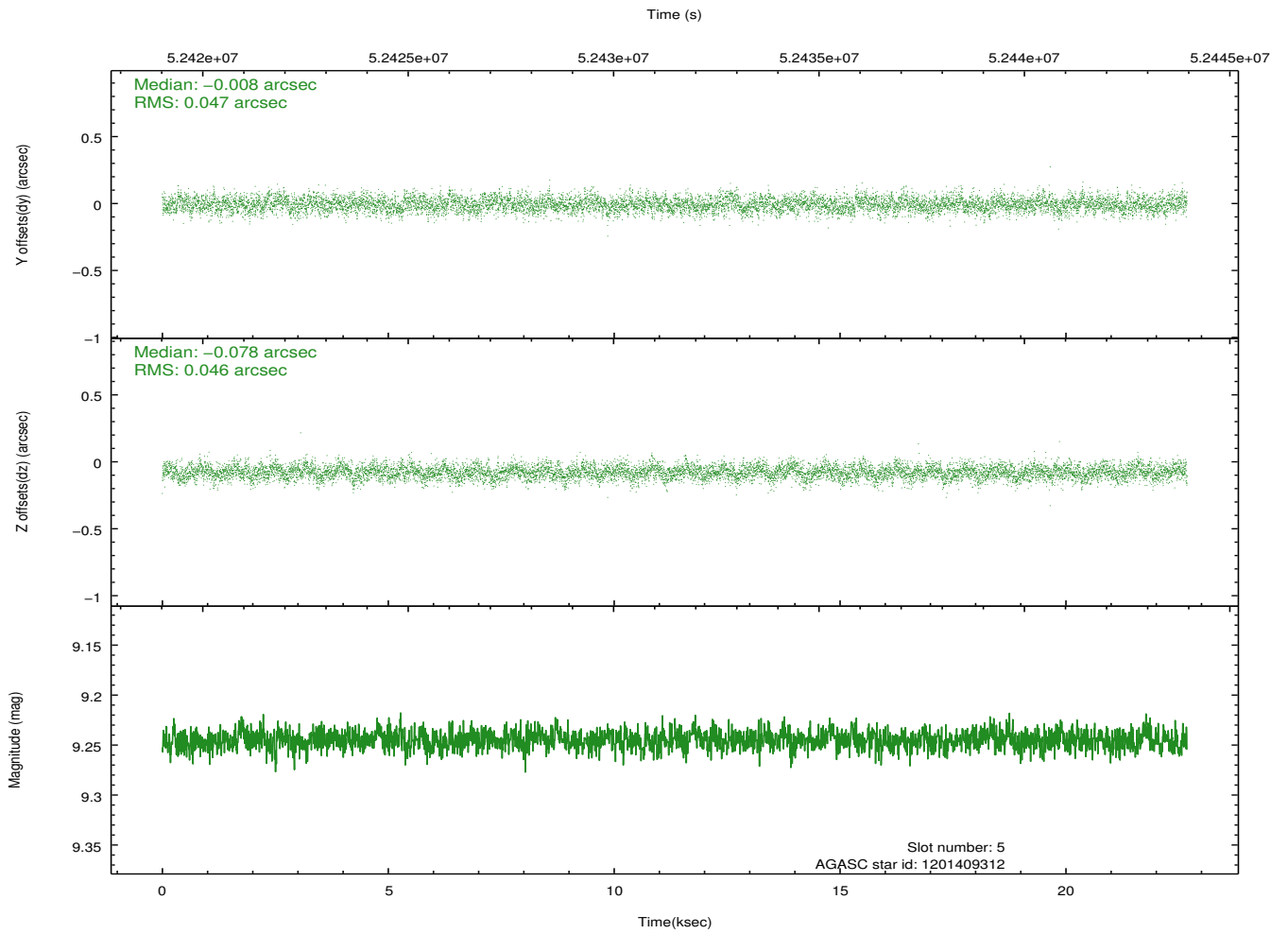
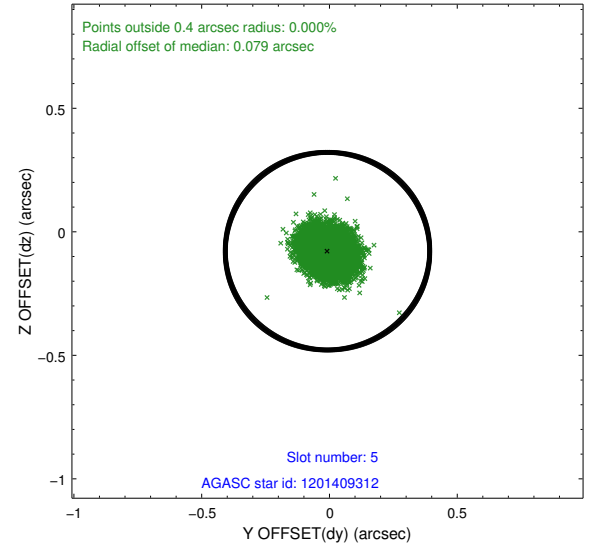
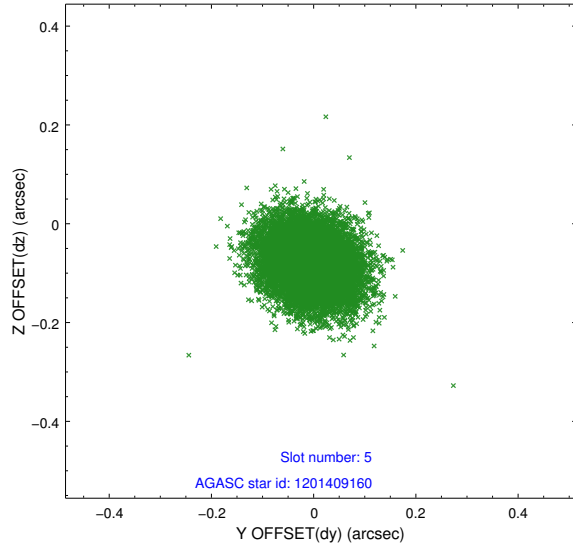


## 2.4.2 Slot 4

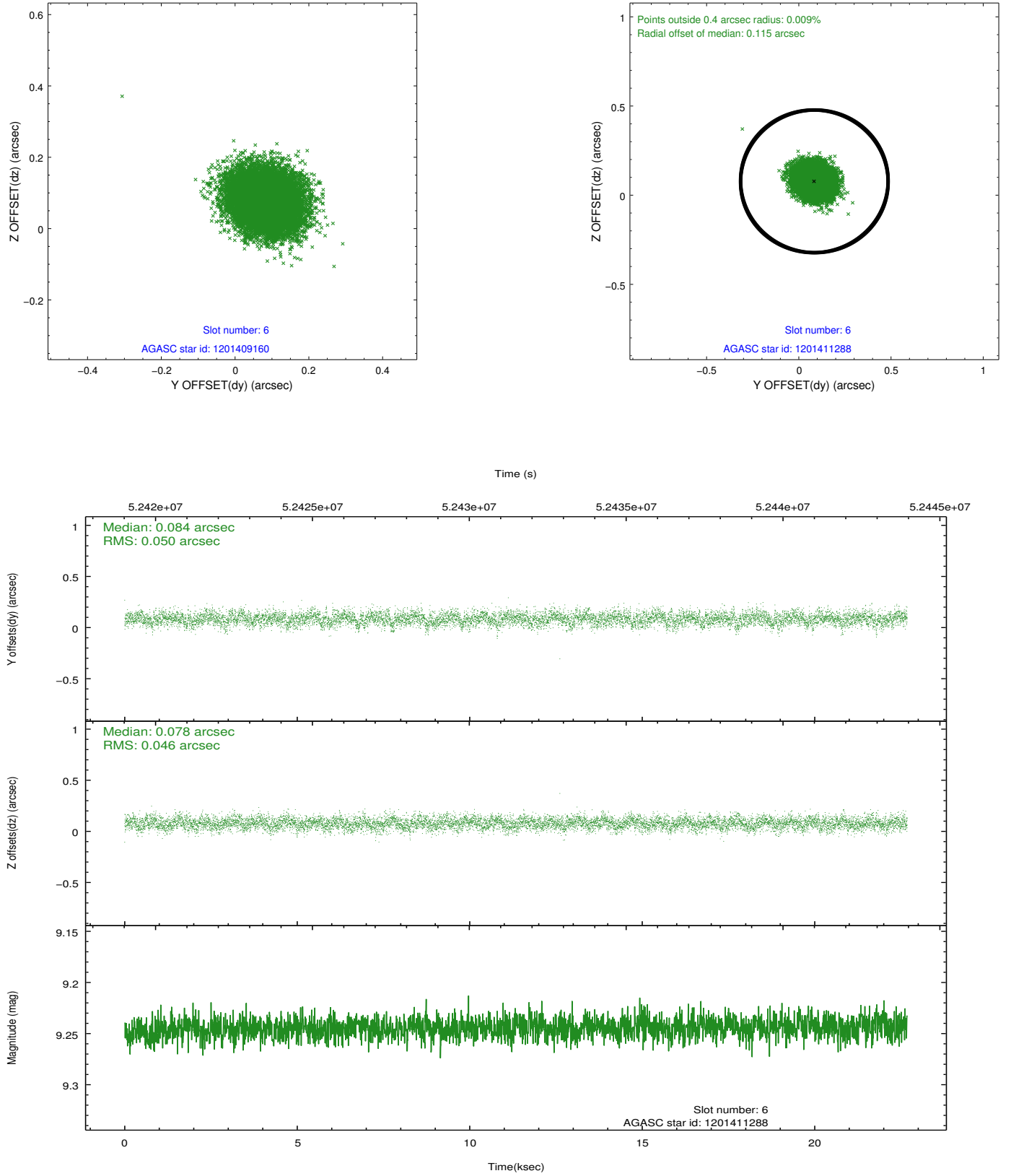




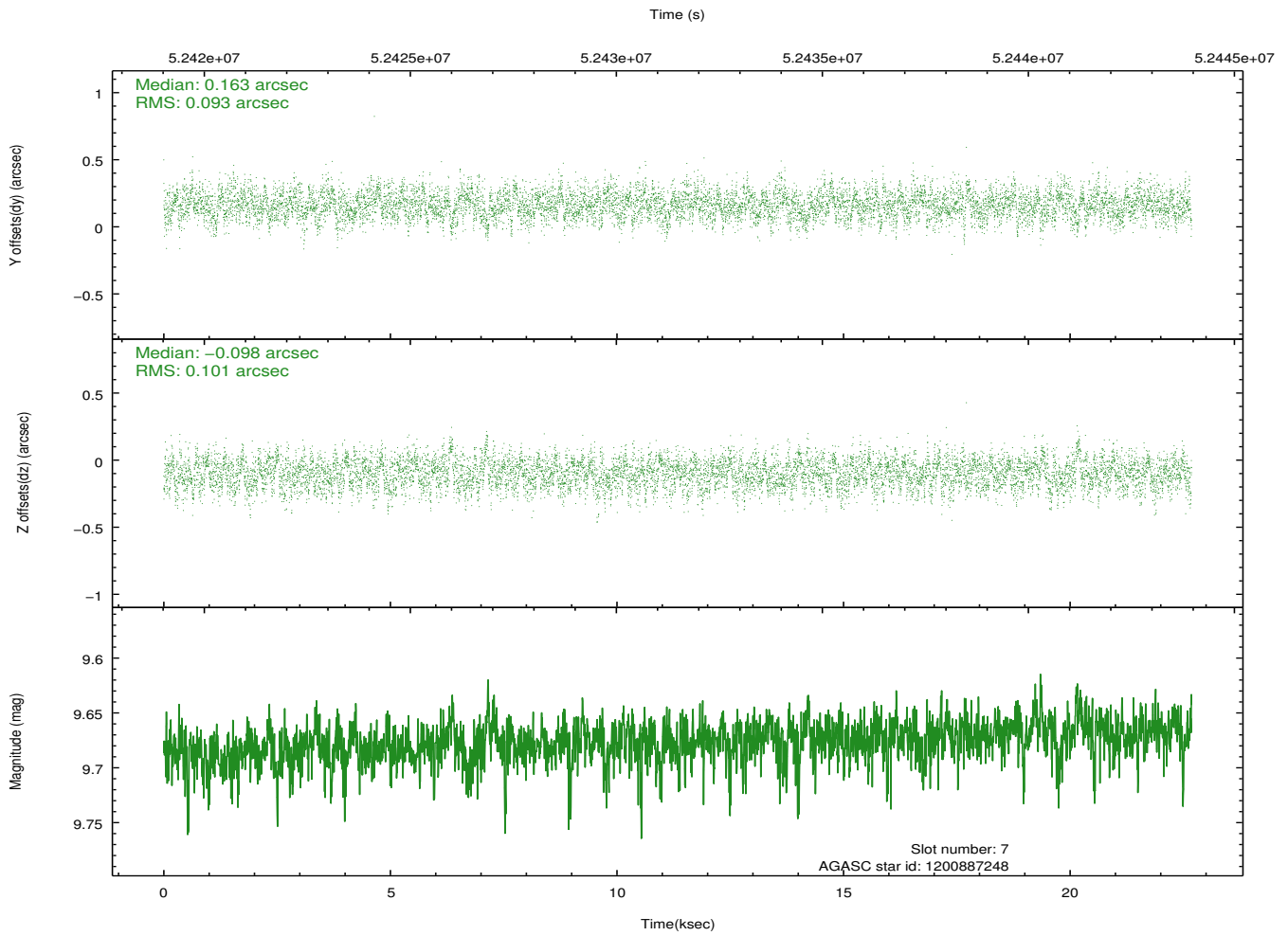
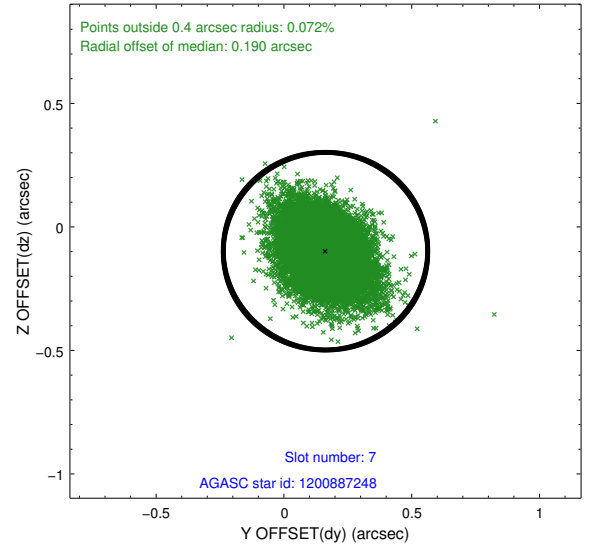
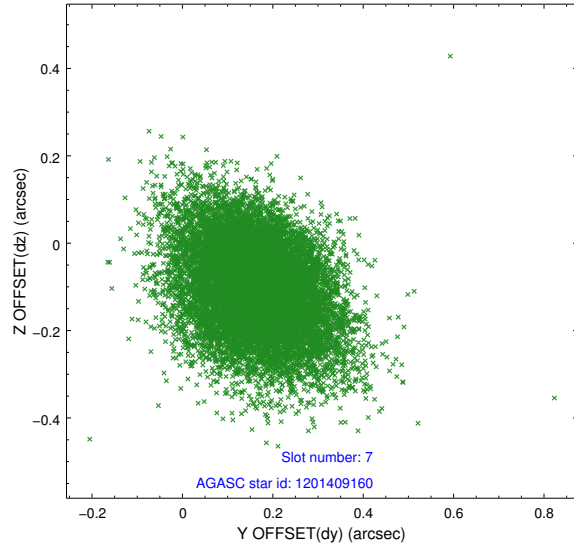
### 2.4.3 Slot 5



## 2.4.4 Slot 6

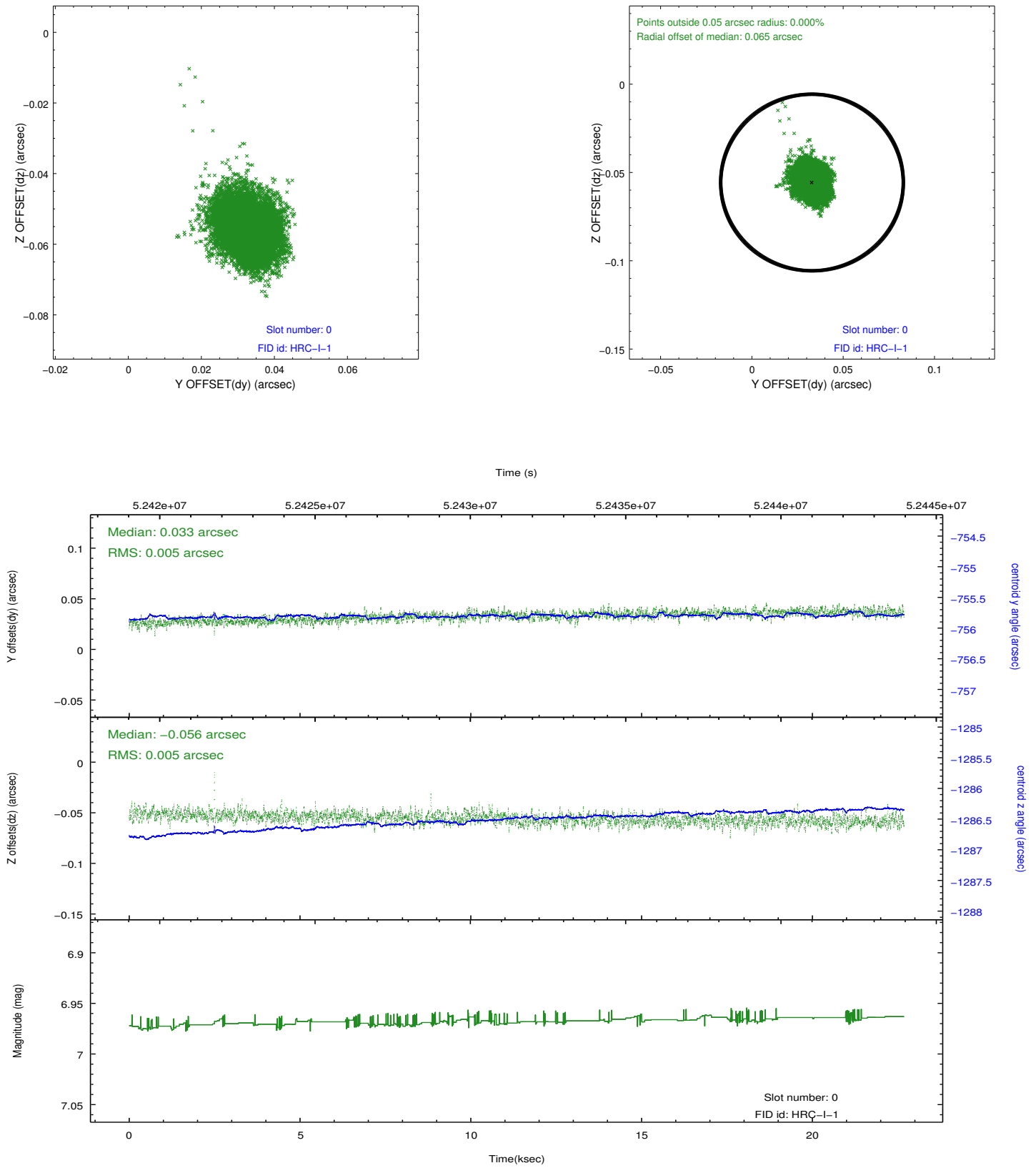


## 2.4.5 Slot 7

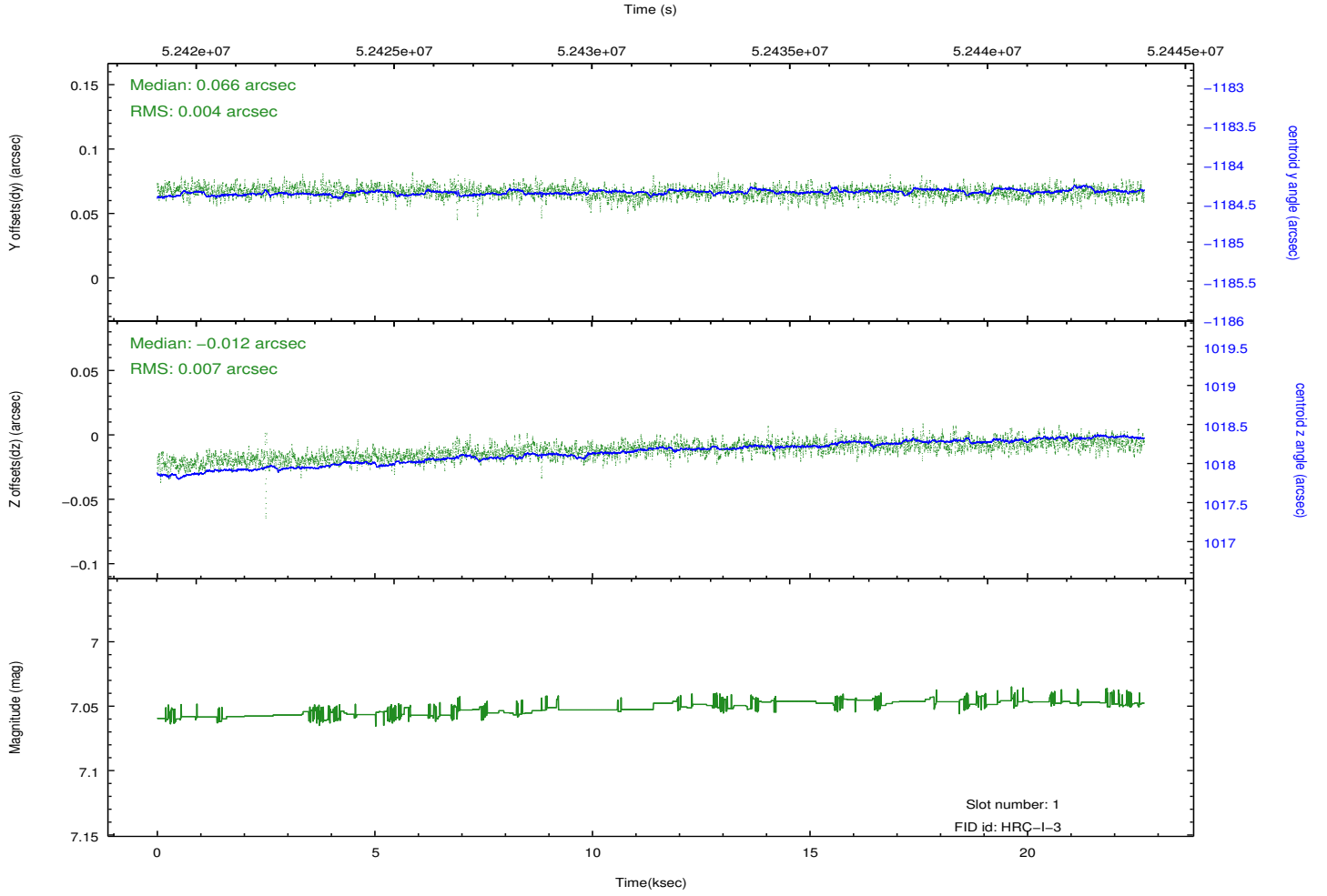
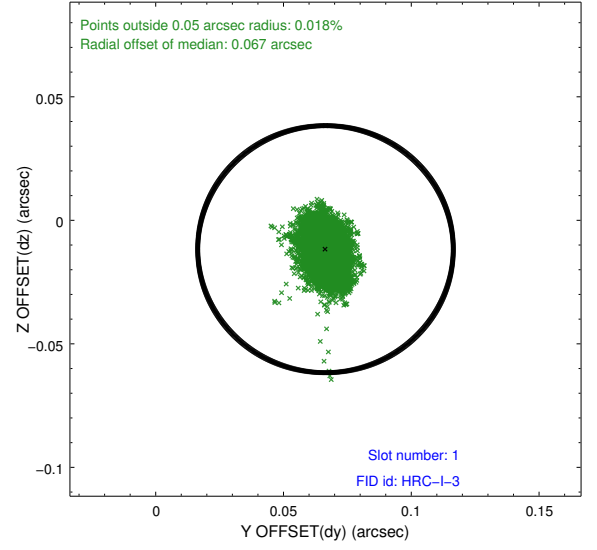
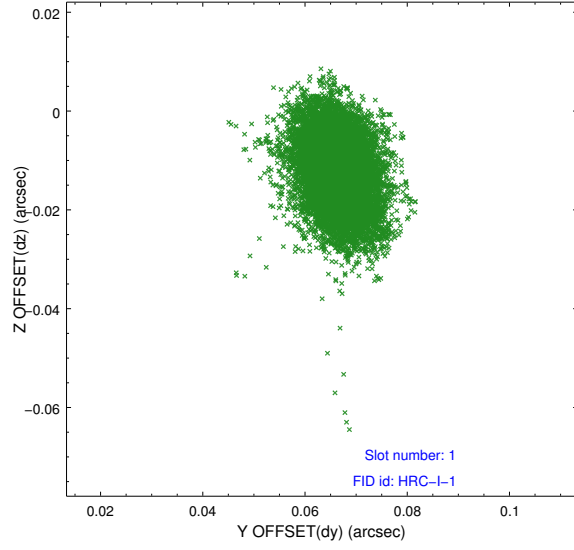


## 2.5 FID Slots

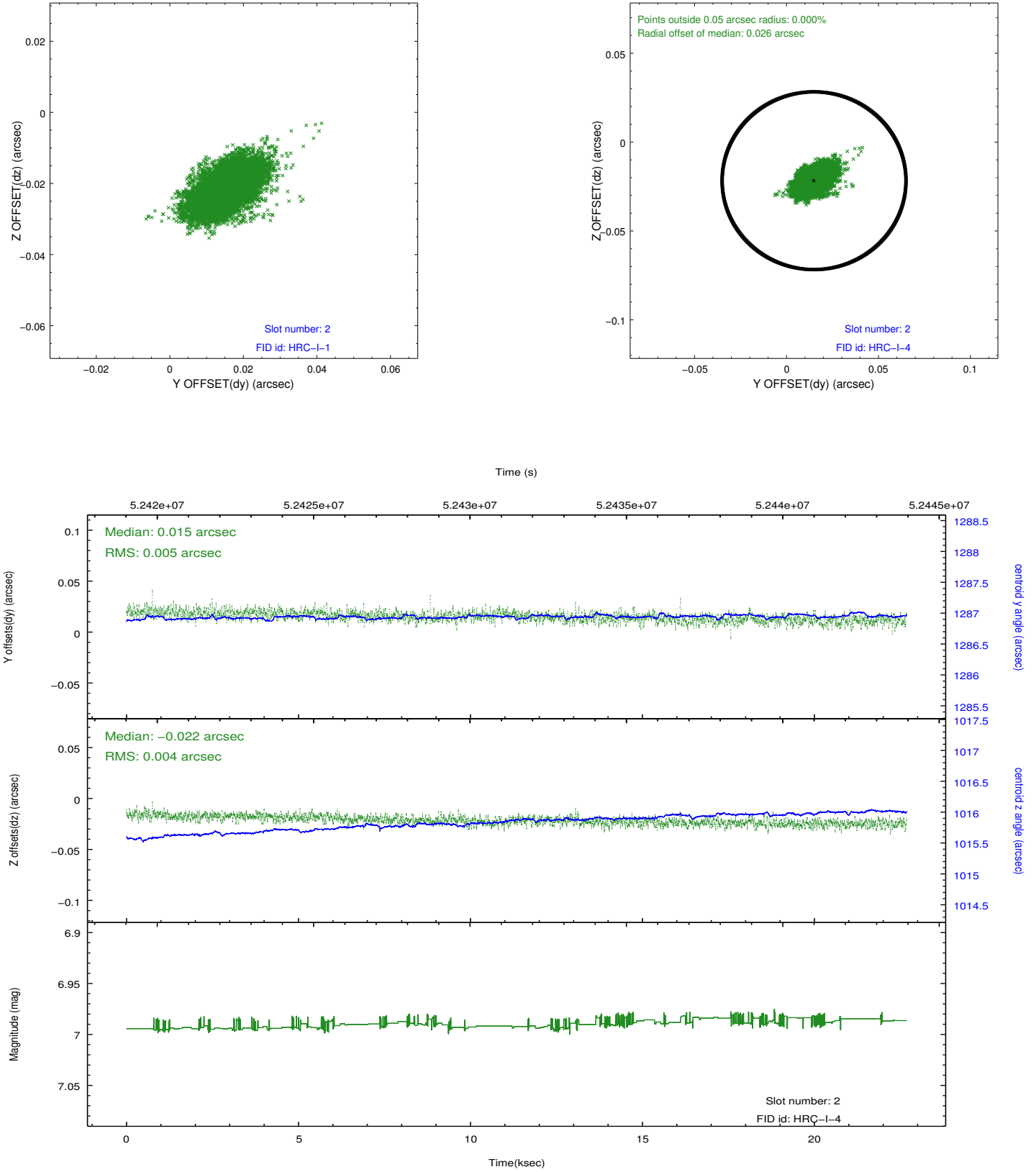
### 2.5.1 Slot 0



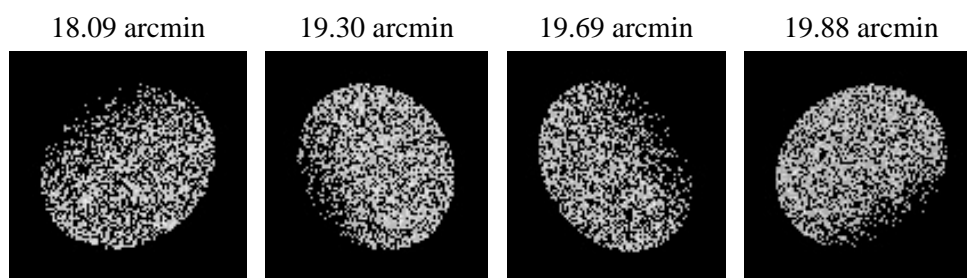
## 2.5.2 Slot 1



### 2.5.3 Slot 2



### 3 Point Sources



## A Summary

### A.1 Status

V&V Scientist	Joy Nichols
V&V Date (YYYY-MM-DD)	2010.01.20
V&V Edition	1
V&V Disposition and Status	OK
V&V Charge Time	21.867

### A.2 Comments

HRC-I activation prior to focus tests.

=====

Charge time for this observation remains at previous value of 21.867 ksec,  
although with the current processing the charge time would have been 22.056 ksec.