

V&V Reference Report

L2 ASCDS Version : 8.4.5

Observation 12812 - L2 Version 2
Chandra X-Ray Center

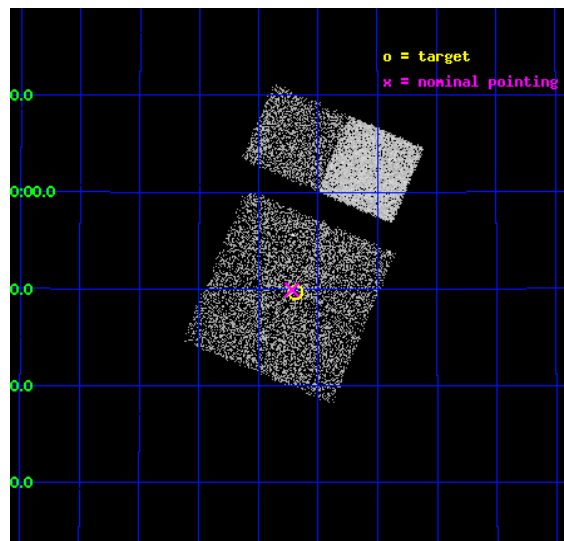
L2 Processing Date : Jul 6 2012

Contents

1	Front	2
2	OBI	3
2.1	OBI	3
2.1.1	Images	3
2.1.2	Bias	3
2.1.3	Parameters	4
2.1.4	Events	4
2.2	Compared Parameters	5
2.3	Aspect	6
2.4	Star Slots	9
2.4.1	Slot 3	9
2.4.2	Slot 4	10
2.4.3	Slot 5	11
2.4.4	Slot 6	12
2.4.5	Slot 7	13
2.5	FID Slots	14
2.5.1	Slot 0	14
2.5.2	Slot 1	15
2.5.3	Slot 2	16
A	Summary	17
A.1	Status	17
A.2	Comments	17

1 Front

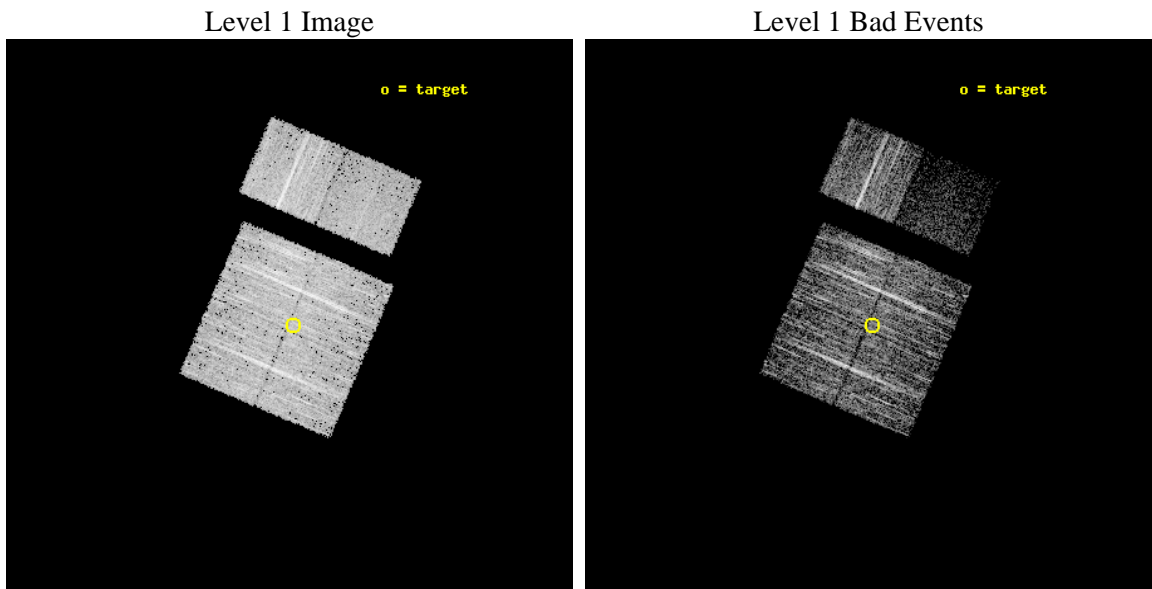
seq_num	702448	Sequence number
obs_id	12812	Observation id
title	A Systematic Chandra Survey of AGN in Major Mergers -- How many Binary AGN are out there?	Proposal title
observer	DR. Kevin Schawinski	Principal investigator
object	GZ_merger_AGN_2	Source name
dtcycle	0	
cycle	P	events from which exps? Prim/Second/Both
ra_targ	210.4225	Observer's specified target RA [deg]
dec_targ	33.826833	Observer's specified target Dec [deg]
ra_nom	210.42995103314	Nominal RA [deg]
dec_nom	33.832002109311	Nominal Dec [deg]
roll_nom	22.992975254207	Nominal Roll [deg]
revision	2	Processing version of data
ontime	4959.9999815822	Sum of GTIs [s]
livetime	4897.1934752619	Livetime [s]
ontime0	4959.9999815822	Sum of GTIs [s]
ontime1	4959.9999815822	Sum of GTIs [s]
ontime2	4959.9999815822	Sum of GTIs [s]
ontime3	4959.9999815822	Sum of GTIs [s]
ontime6	4959.9999815822	Sum of GTIs [s]
ontime7	4959.9999815822	Sum of GTIs [s]
l2events	21554	Number of level 2 events



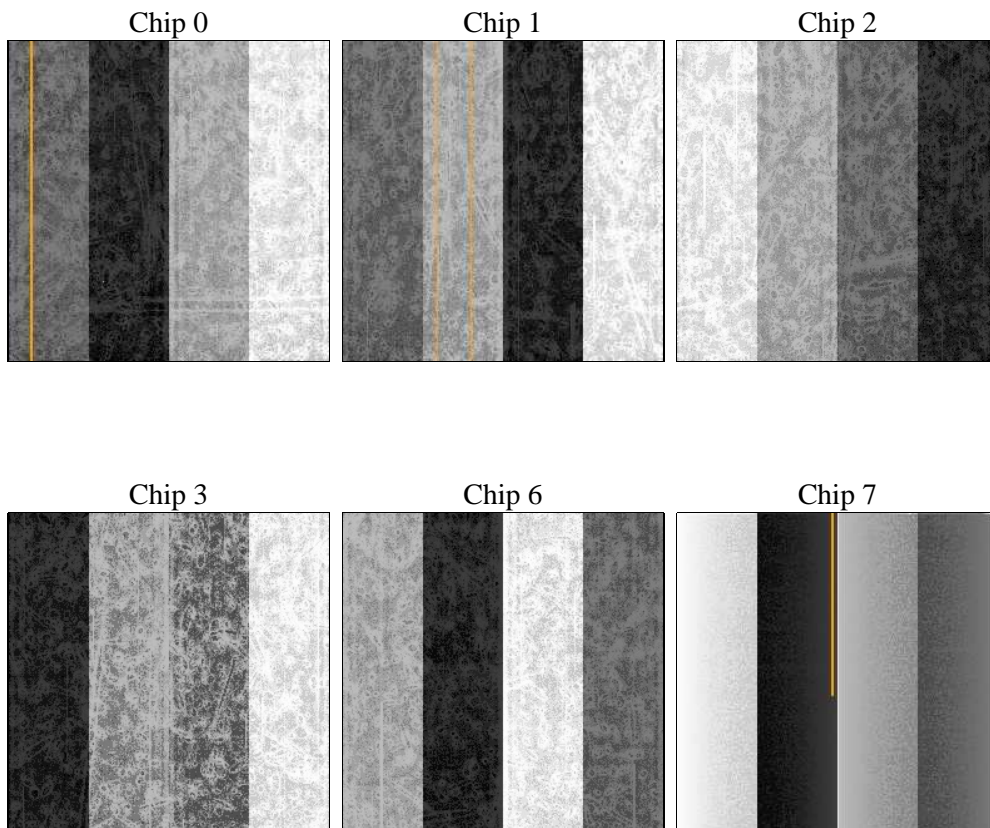
2 OBI

2.1 OBI

2.1.1 Images



2.1.2 Bias



2.1.3 Parameters

obi_num	0	Obi number	sched_exp_time	5000.000000	[s] Scheduled observation exposure time
ascdsver	8.4.5	Processing system revision	ontime	4959.9999815822	Sum of GTIs [s]
caldsver	4.5.0	 	ontime0	4959.9999815822	Sum of GTIs [s]
date	2012-07-06T14:32:41	Date and time of file creation	ontime1	4959.9999815822	Sum of GTIs [s]
revision	2	Processing version of data	ontime2	4959.9999815822	Sum of GTIs [s]
			ontime3	4959.9999815822	Sum of GTIs [s]
			ontime6	4959.9999815822	Sum of GTIs [s]
			ontime7	4959.9999815822	Sum of GTIs [s]
			l1events	159165	Number of level 1 events

2.1.4 Events

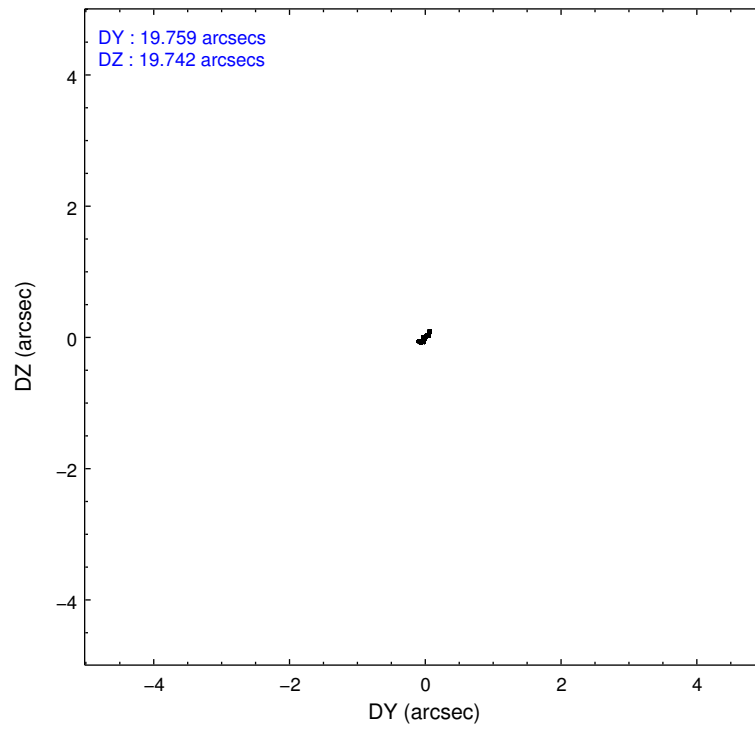
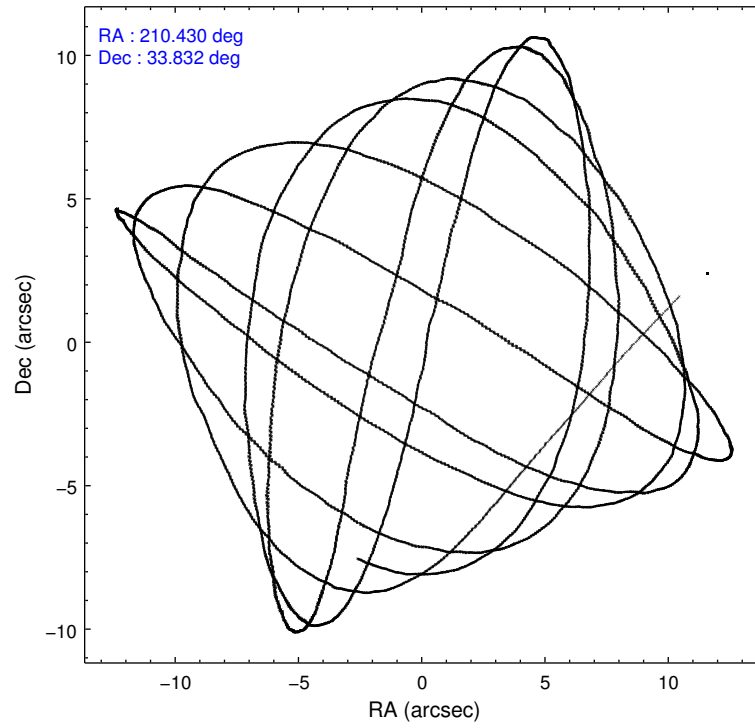
	ccd 0	ccd 1	ccd 2	ccd 3	ccd 6	ccd 7
level 1 events	25556	25964	32116	27388	28992	19149
rejected events	22794	23129	29290	24817	26103	8209
rejected %	89%	89%	91%	90%	90%	42%

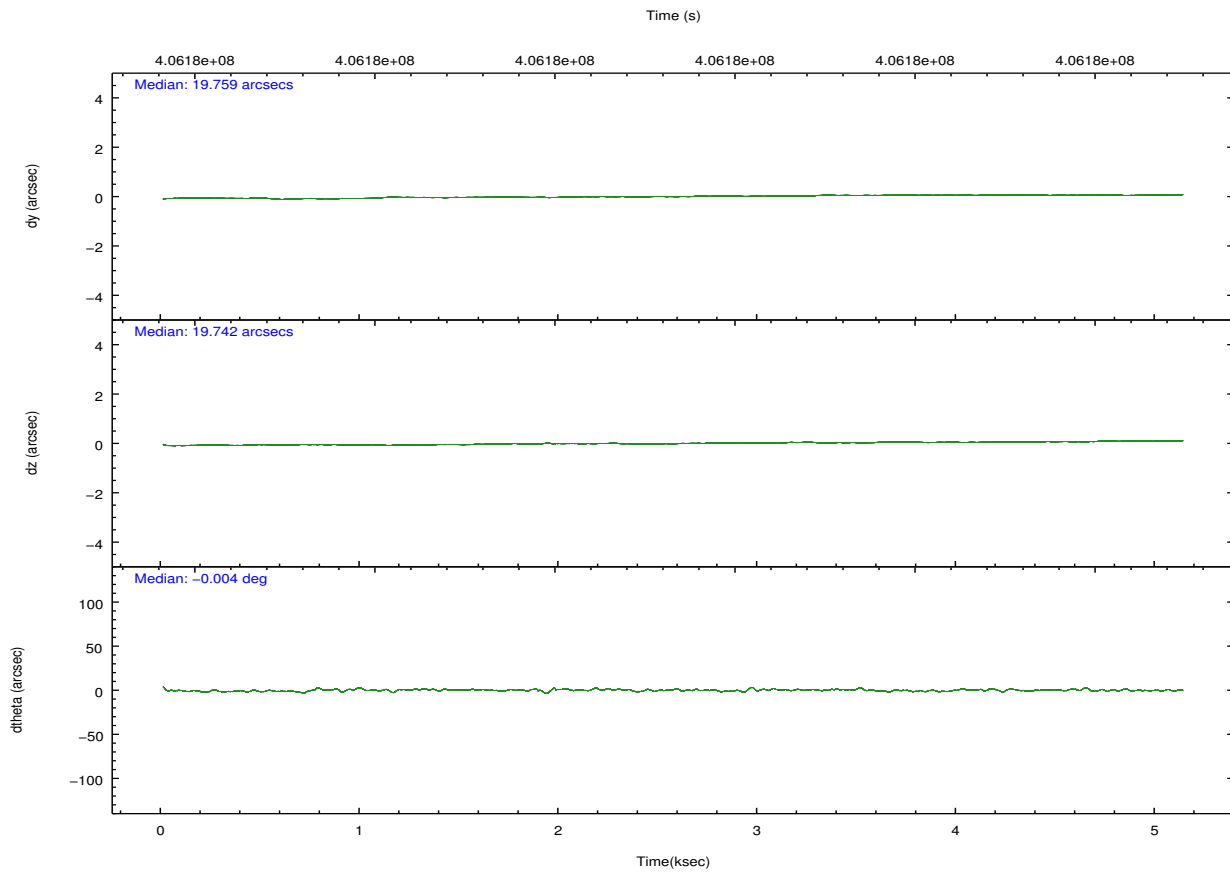
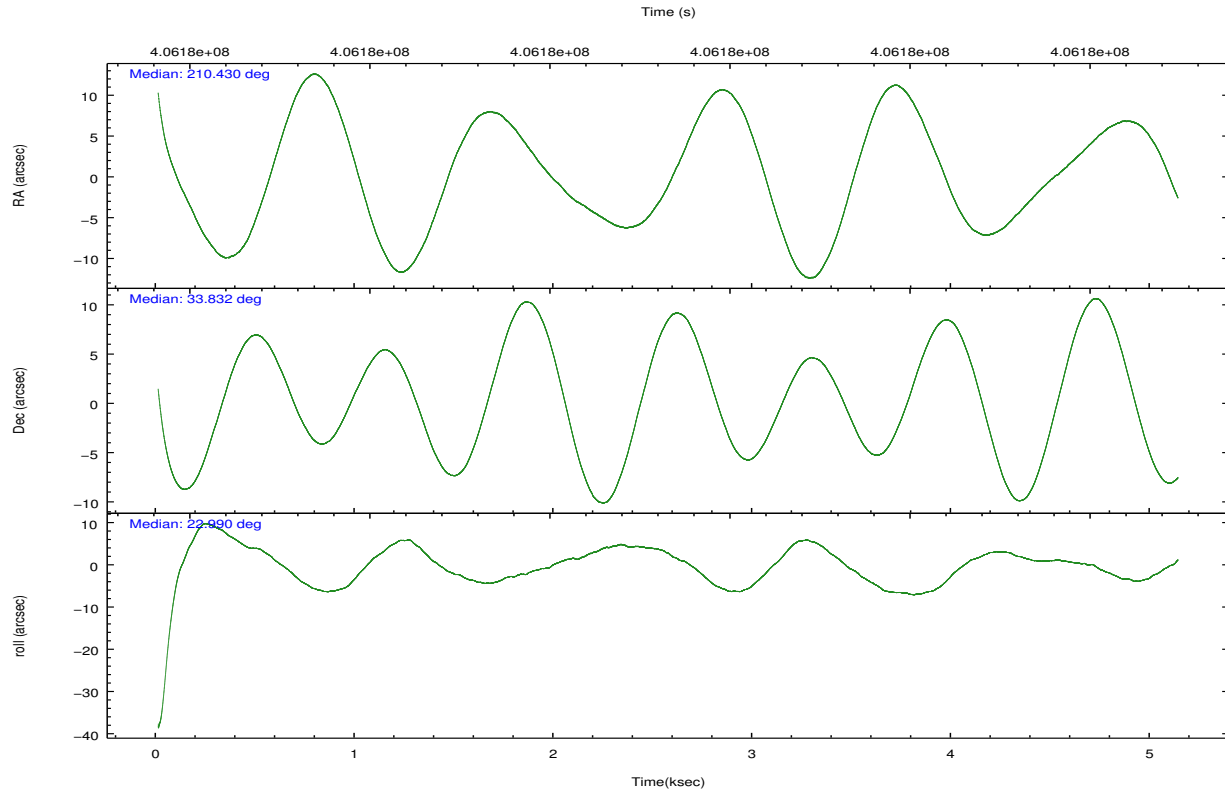
	ccd 0	ccd 1	ccd 2	ccd 3	ccd 6	ccd 7
grade 0 events	1084	1047	1139	1058	1145	1421
	4%	4%	3%	3%	3%	7%
grade 1 events	20	17	27	14	14	32
	0%	0%	0%	0%	0%	0%
grade 2 events	688	644	712	511	652	2733
	2%	2%	2%	1%	2%	14%
grade 3 events	306	347	266	270	310	1077
	1%	1%	0%	0%	1%	5%
grade 4 events	283	303	306	288	300	1009
	1%	1%	0%	1%	1%	5%
grade 5 events	605	662	590	679	679	1964
	2%	2%	1%	2%	2%	10%
grade 6 events	405	495	408	448	487	4713
	1%	1%	1%	1%	1%	24%
grade 7 events	22165	22449	28668	24120	25405	6200
	86%	86%	89%	88%	87%	32%

2.2 Compared Parameters

Parameter	Planned	Actual	Parameter	Planned	Actual
Instrument	ACIS	ACIS	Obspar format version number	7	7
Detector	ACIS-012367	ACIS-012367	Obspar file type	PREDICTED	ACTUAL
Grating	NONE	NONE	Obspar update status	NONE	UPDATED
Data mode	FAINT	FAINT	CCD I0 on	Y	Y
Observation mode	POINTING	POINTING	CCD I1 on	Y	Y
[deg] Pointing RA	210.410107	210.4299510331399	CCD I2 on	Y	Y
[deg] Pointing Dec	33.810033	33.83200210931054	CCD I3 on	Y	Y
[deg] Pointing Roll	22.795426	22.99297525420731	CCD S0 on	N	N
[mm] SIM focus pos	-0.782348	-0.7809083437167272	CCD S1 on	N	N
[mm] SIM defocus	0	0.001439871863259334	CCD S2 on	O1	Y
[mm] SIM translation stage pos	-233.592463	-233.5874344608287	CCD S3 on	O2	Y
[mm] SIM translation stage offset	0	-0.005018542100998502	CCD S4 on	N	N
[s] Observation start time (MET)	406178225.184000	406176780.08868	CCD S5 on	N	N
Observation start date	2010-11-15T03:15:59	2010-11-15T02:53:00	Number of optional ACIS chips dropped	0	0
[s] Observation end time (MET)	406183225.184000	406184202.11406	On-chip summing requested	N	N
Observation end date	2010-11-15T04:39:19	2010-11-15T04:56:42	Subarray requested	NONE	NONE
Read mode	TIMED	TIMED	Alternating exposures requested	N	N
			[s] Primary exposure time	0.000000	3.2

2.3 Aspect



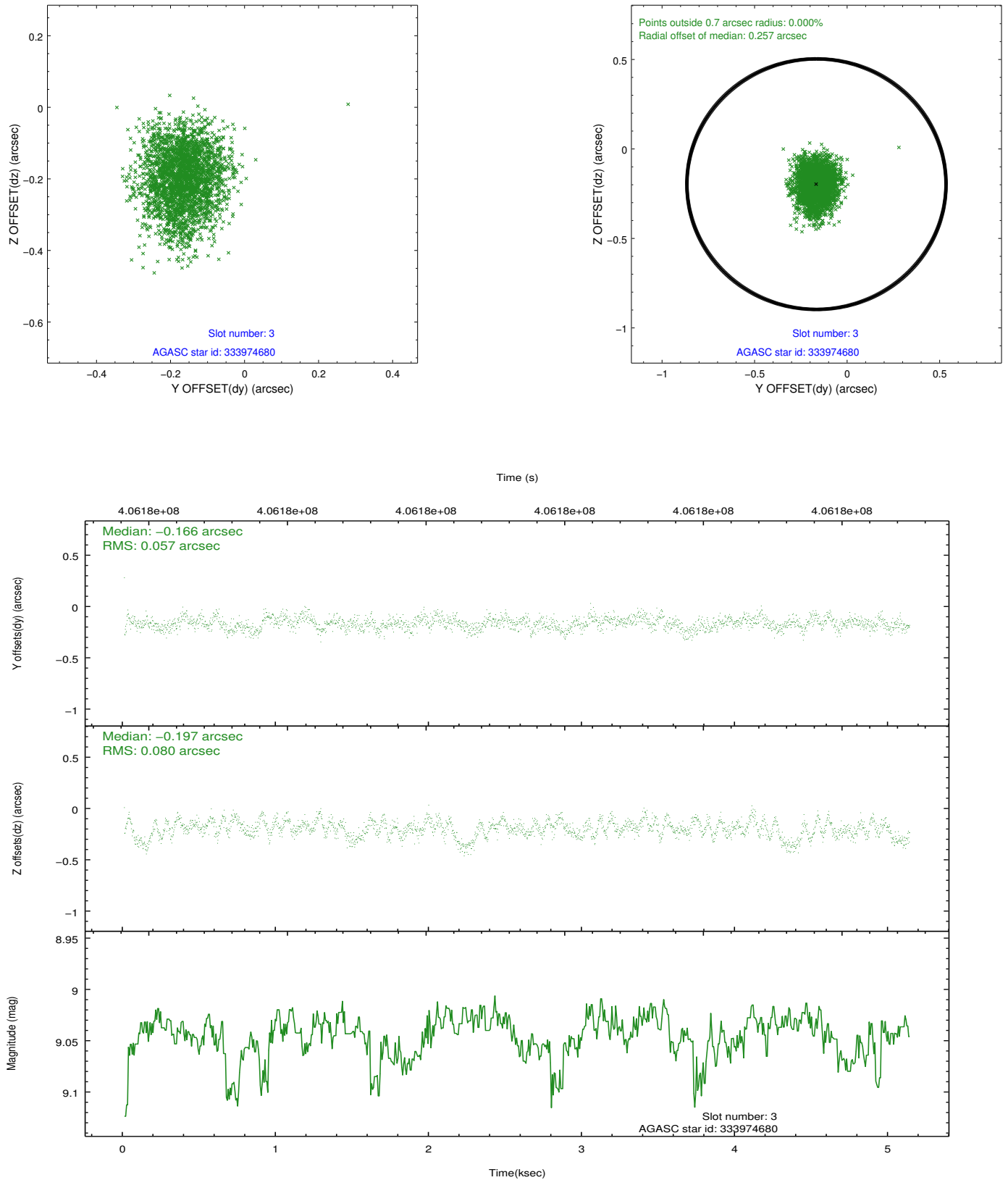


Slot Statistics

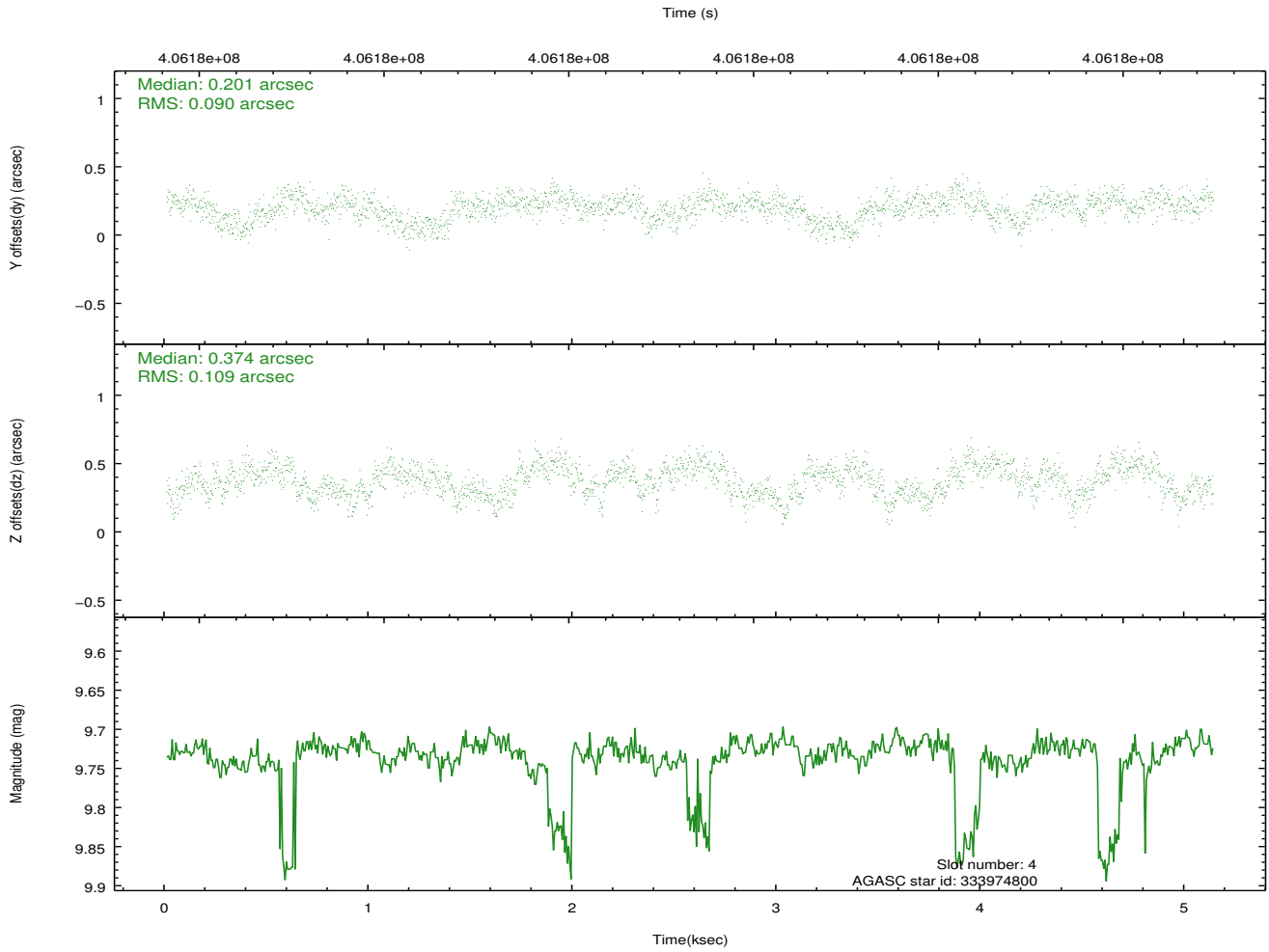
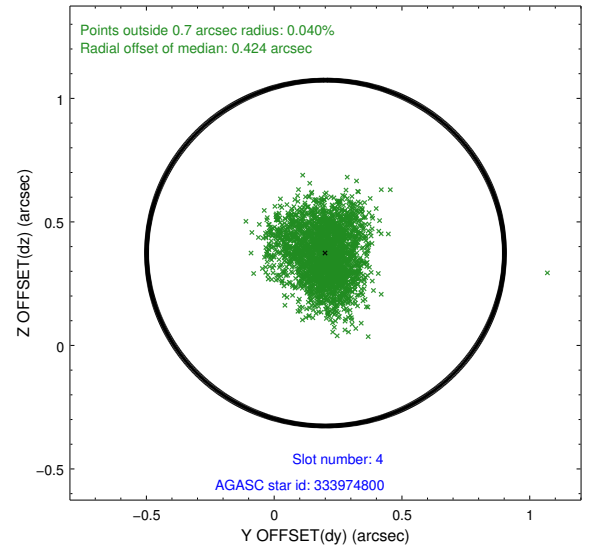
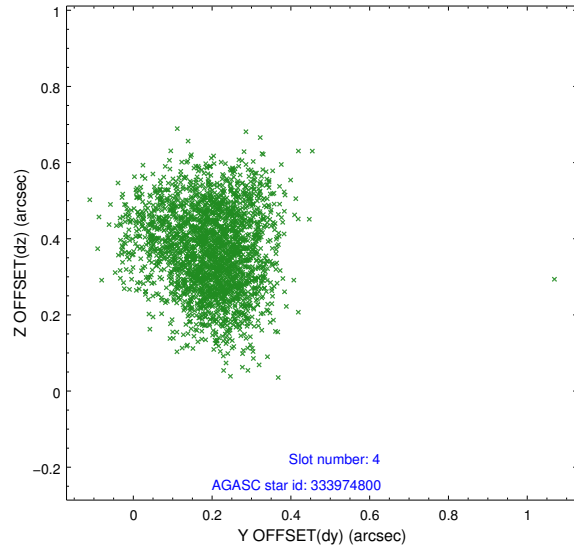
slot	status	id	mag	n_pts	med_dy	med_dz	dr1	dr2	ra	dec	mean_y	mean_z
0	FID	ACIS-I-1	7.01	1252	-0.053	0.048	0.009	0.015	0.000000	0.000000	919.54	-843.39
1	FID	ACIS-I-2	6.93	1252	-0.131	-0.068	0.007	0.012	0.000000	0.000000	-773.98	-850.59
2	FID	ACIS-I-4	6.94	1252	0.085	0.087	0.006	0.012	0.000000	0.000000	2138.97	1055.88
3	GUIDE	333974680	9.04	2501	-0.166	-0.197	0.105	0.169	210.417176	34.238804	617.03	1414.97
4	GUIDE	333974800	9.73	2484	0.201	0.374	0.152	0.236	210.155852	33.346007	-1351.16	-1241.70
5	GUIDE	333975680	8.93	2501	-0.027	0.056	0.074	0.120	210.048307	33.761344	-1065.77	259.62
6	GUIDE	333979624	9.18	2502	0.123	0.204	0.109	0.174	210.090305	33.288866	-1613.62	-1354.54
7	GUIDE	333974352	8.20	2502	-0.124	-0.422	0.105	0.165	210.057017	34.374486	-180.01	2281.20

2.4 Star Slots

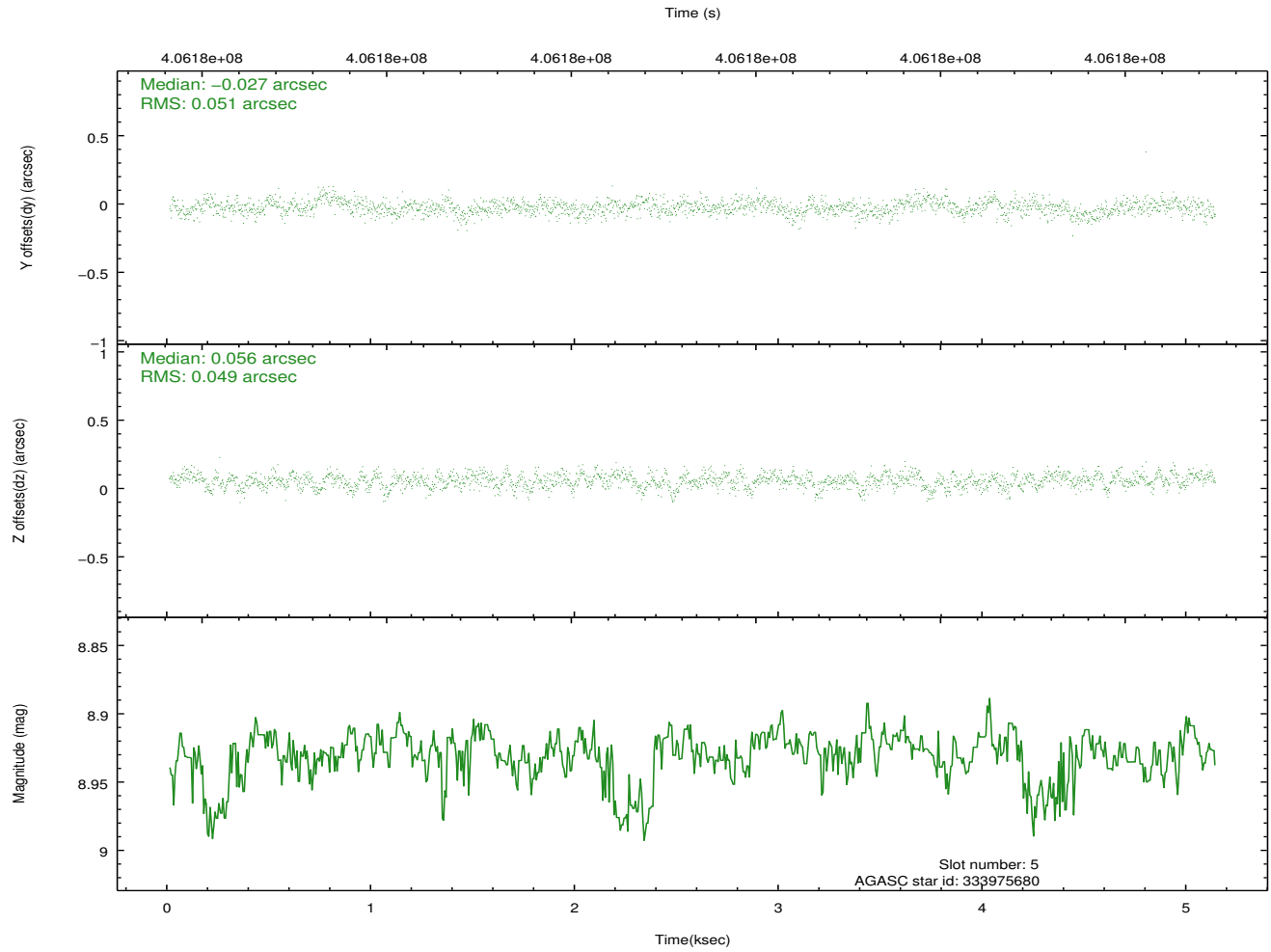
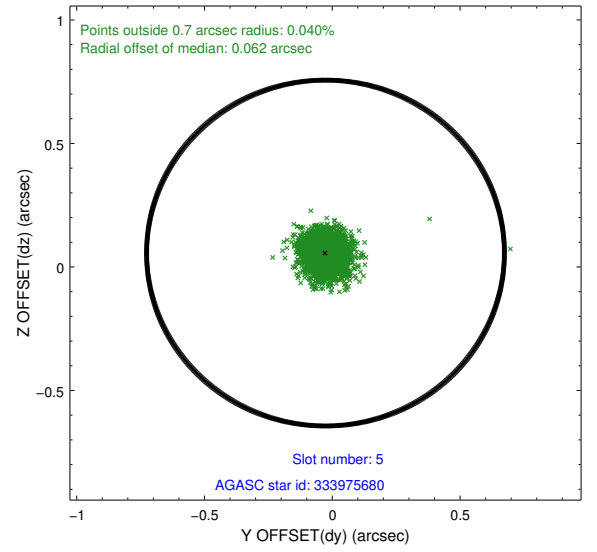
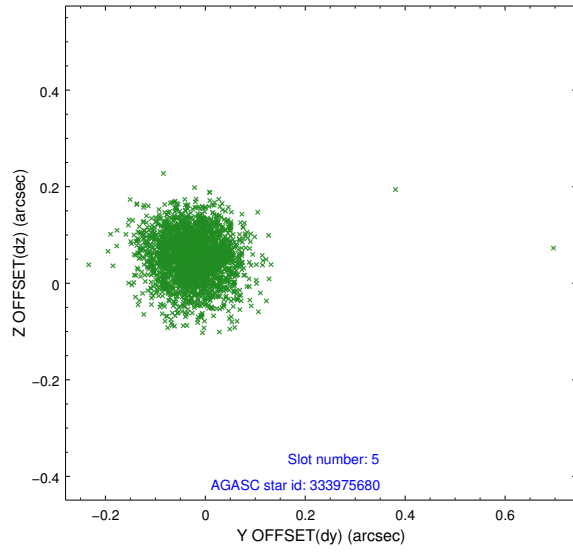
2.4.1 Slot 3



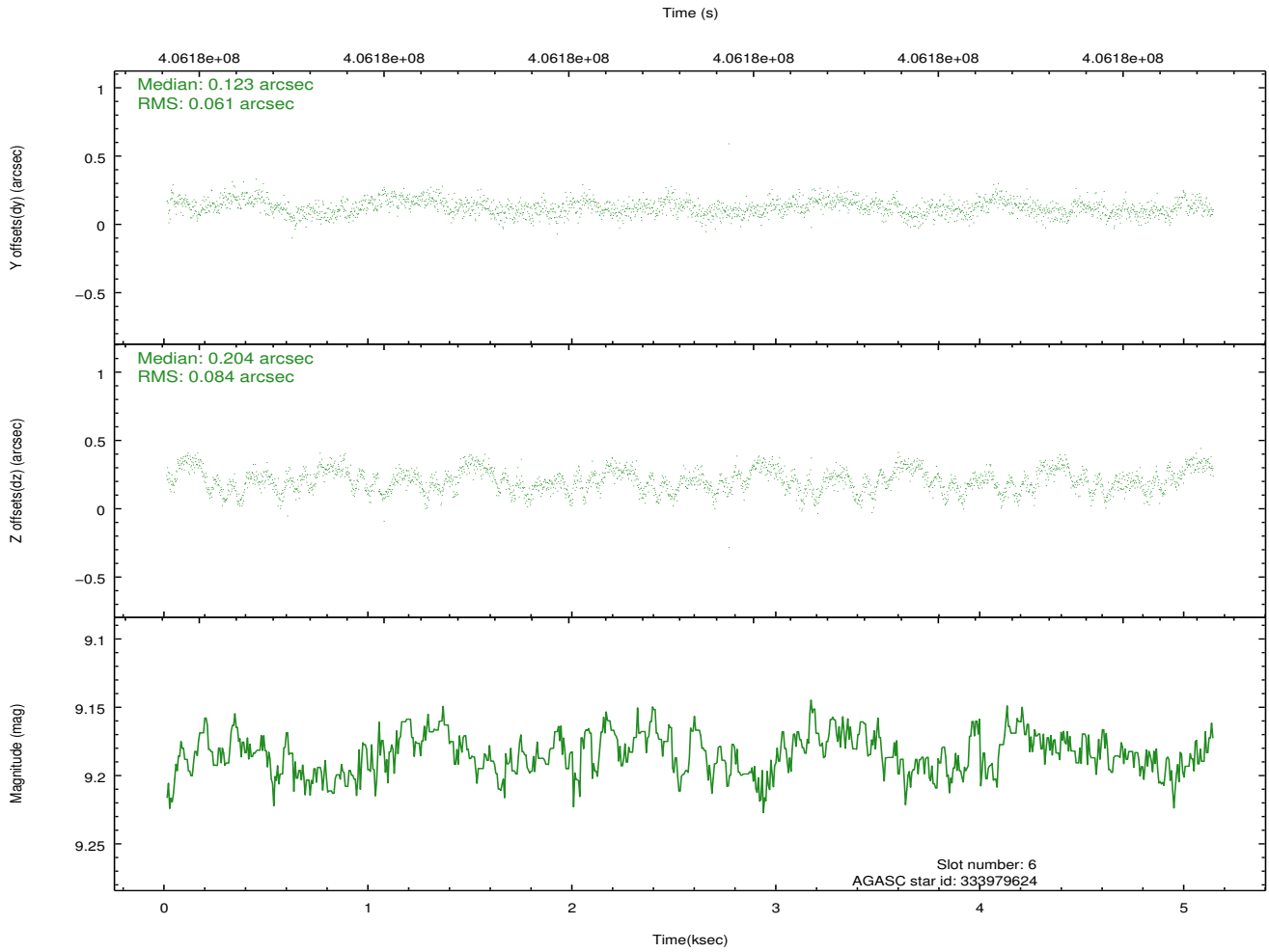
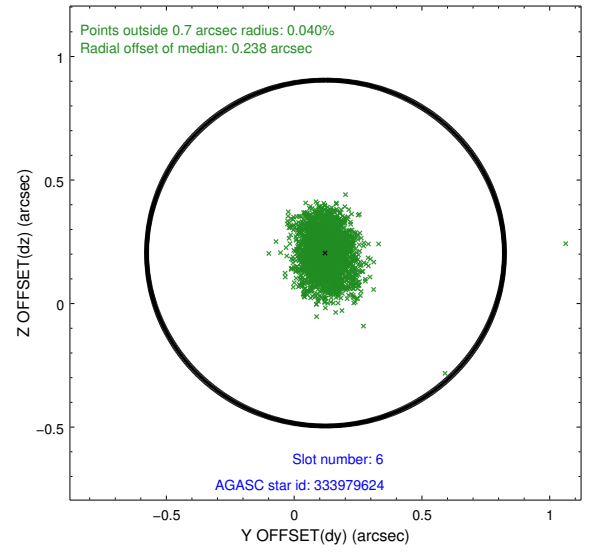
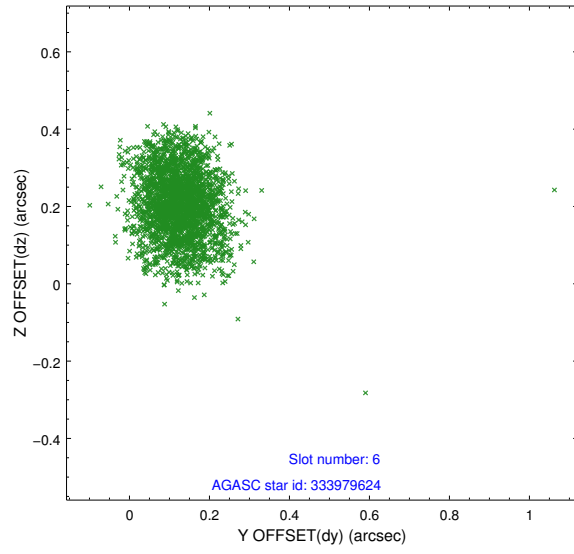
2.4.2 Slot 4



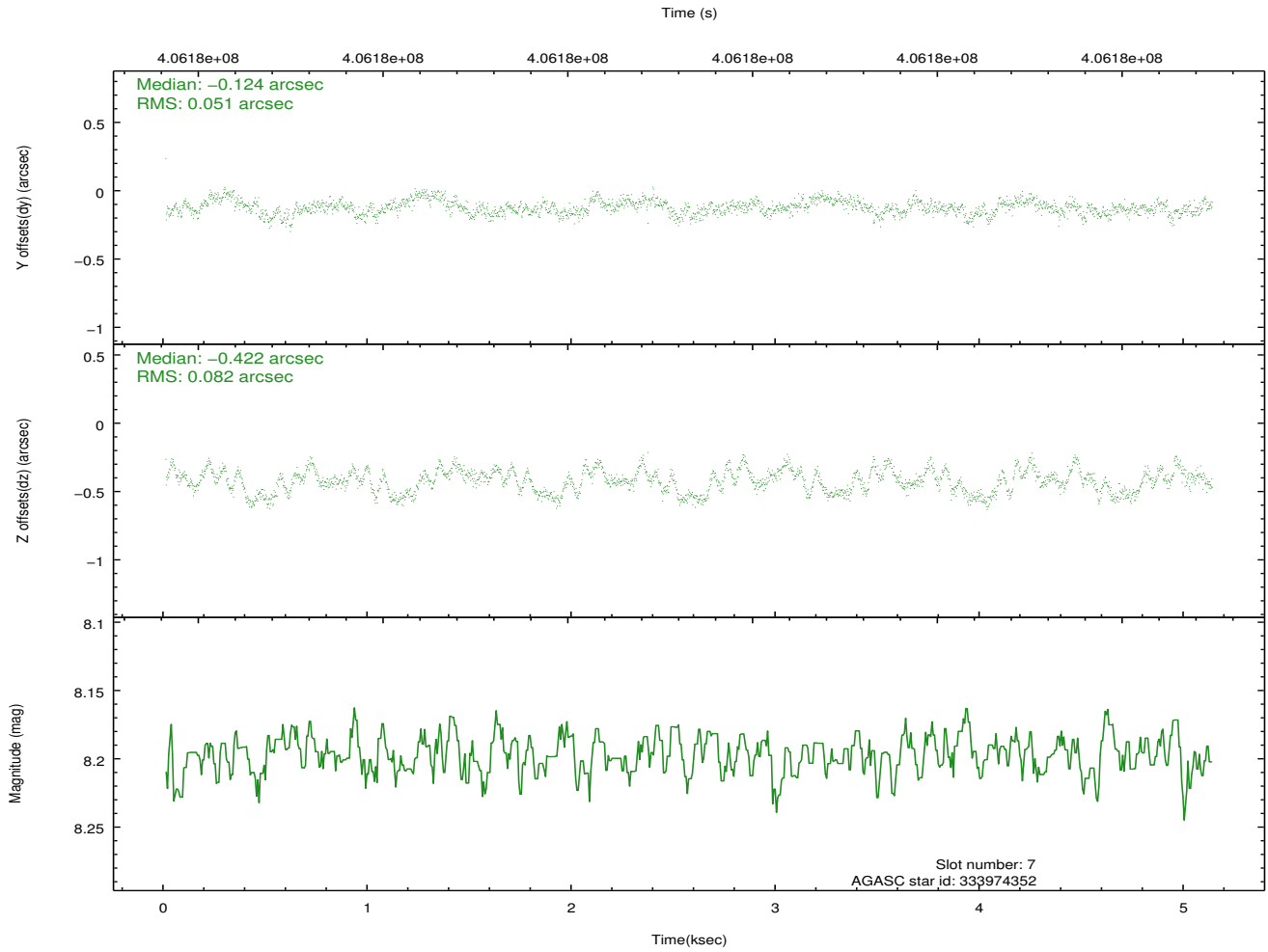
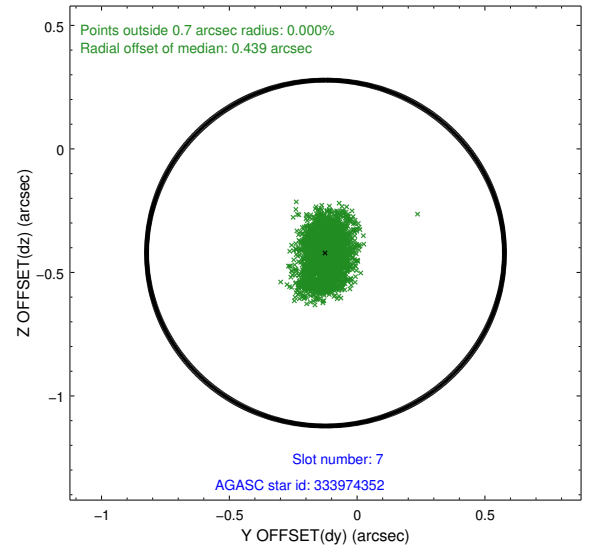
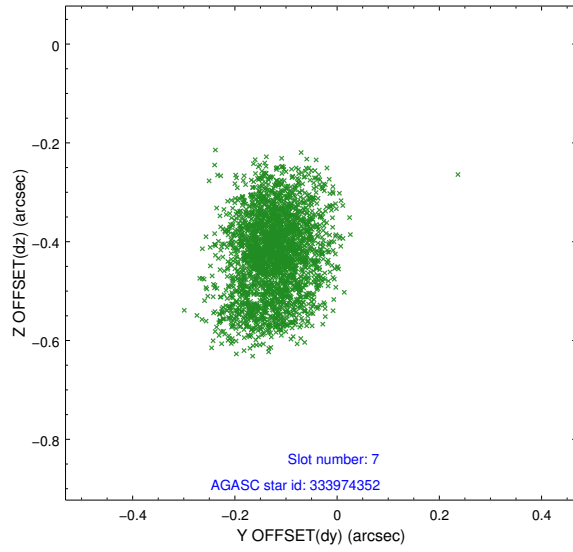
2.4.3 Slot 5



2.4.4 Slot 6

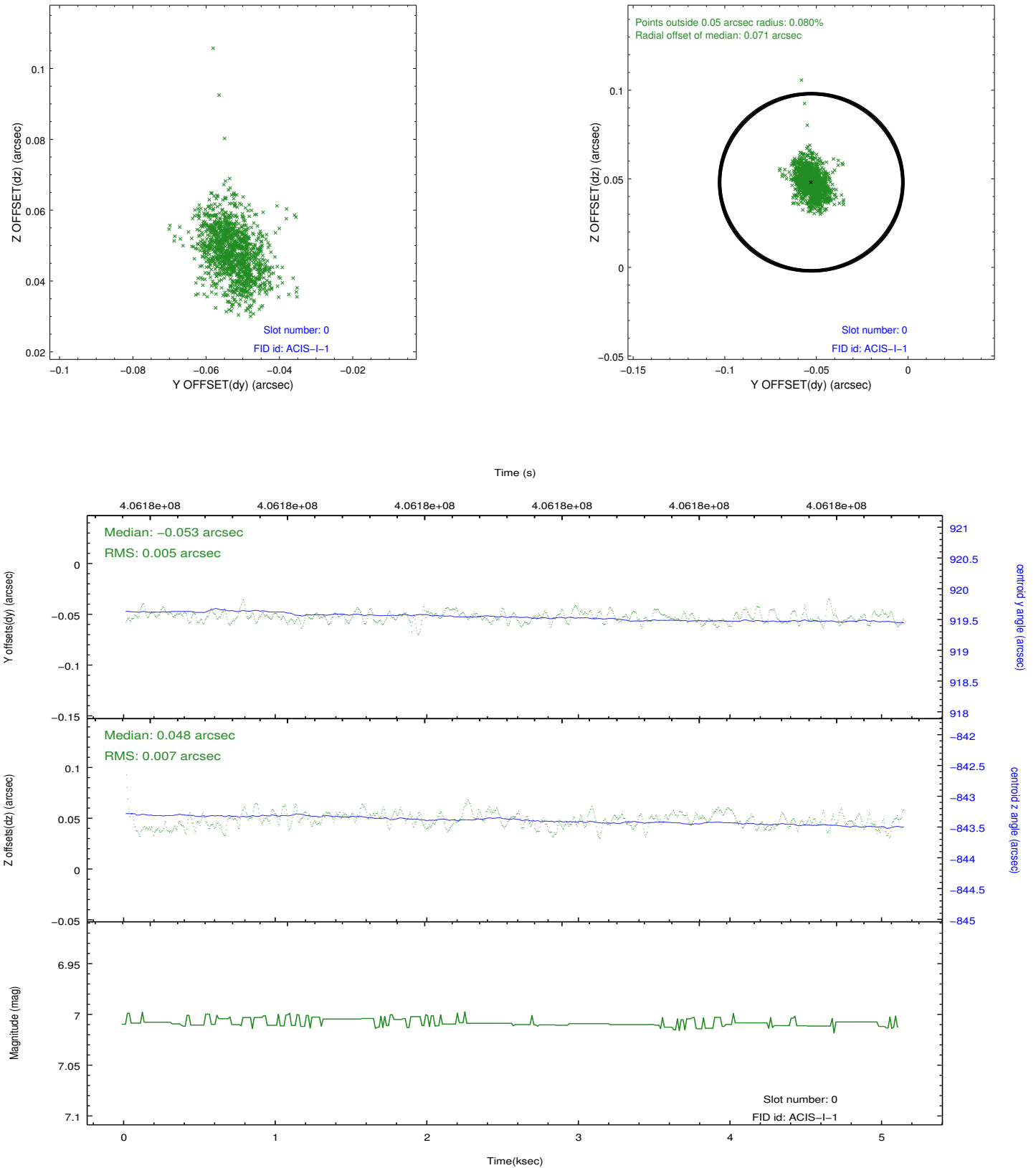


2.4.5 Slot 7

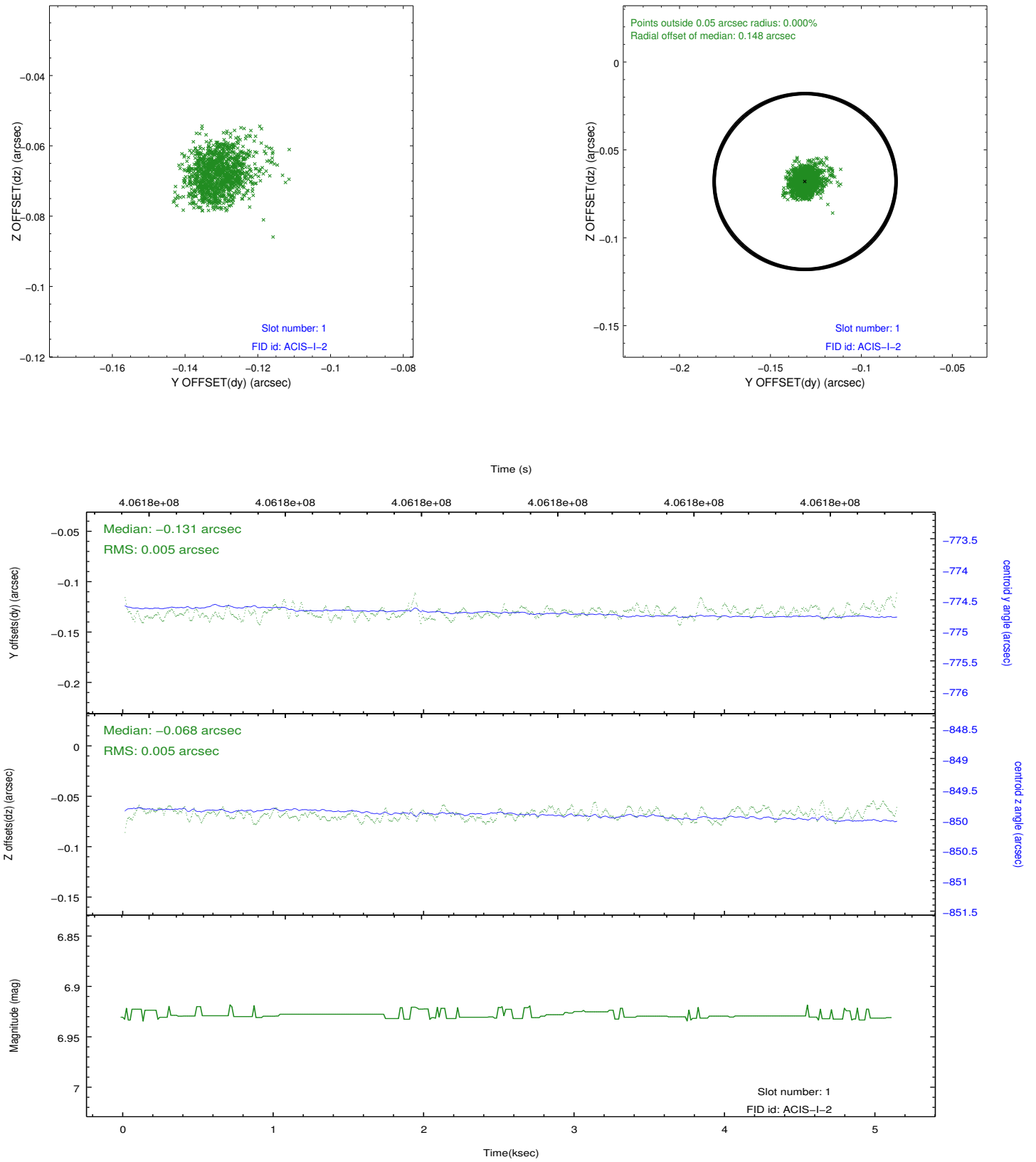


2.5 FID Slots

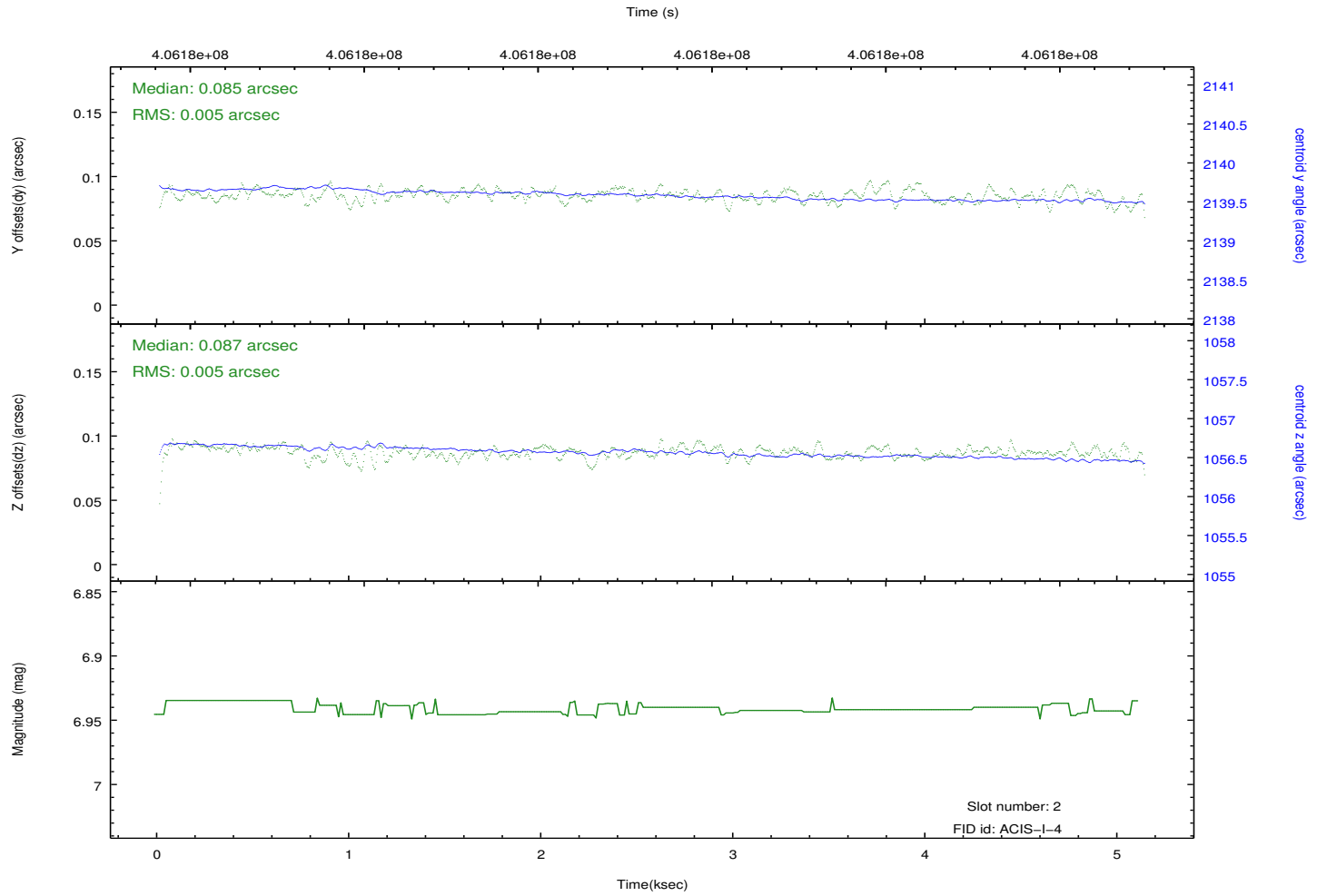
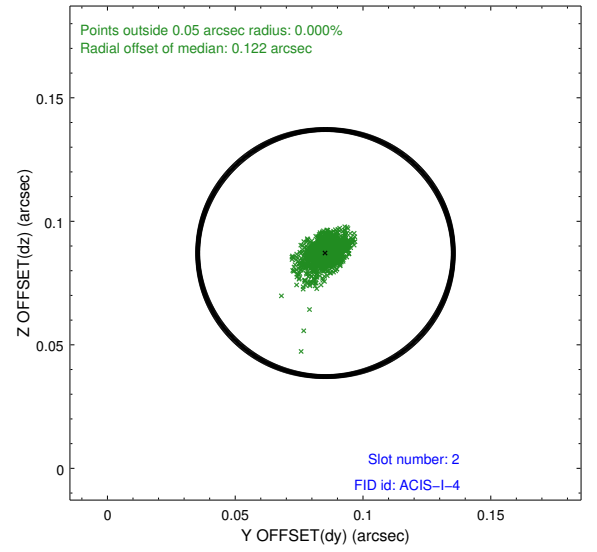
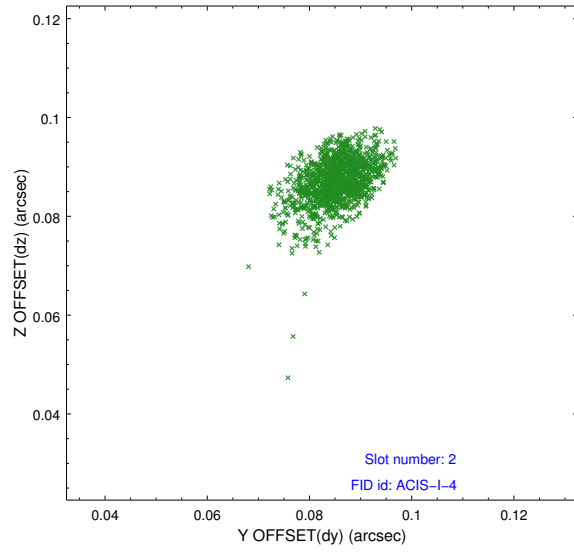
2.5.1 Slot 0



2.5.2 Slot 1



2.5.3 Slot 2



A Summary

A.1 Status

V&V Scientist	Beth Sundheim
V&V Date (YYYY-MM-DD)	2012.07.16
V&V Edition	1
V&V Disposition and Status	OK
V&V Charge Time	4.9599999815822

A.2 Comments