

# V&V Reference Report

## L2 ASCDS Version : 8.4.4

Observation 8631 - L2 Version 2  
Chandra X-Ray Center

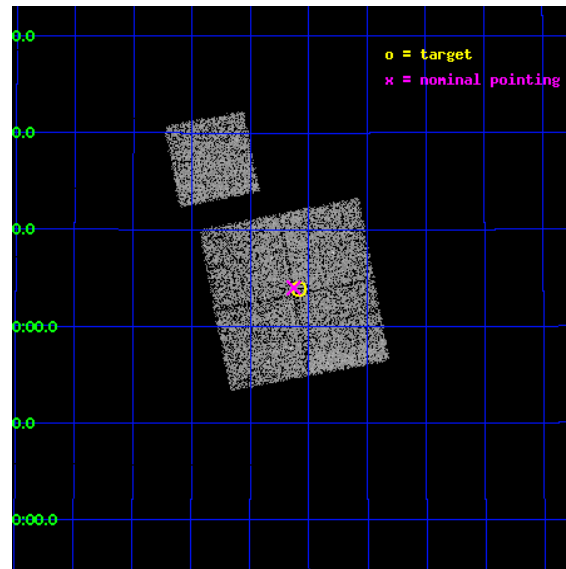
L2 Processing Date : May 5 2012

## Contents

<b>1</b>	<b>Front</b>	<b>2</b>
<b>2</b>	<b>OBI</b>	<b>3</b>
2.1	OBI . . . . .	3
2.1.1	Images . . . . .	3
2.1.2	Bias . . . . .	3
2.1.3	Parameters . . . . .	4
2.1.4	Events . . . . .	4
2.2	Compared Parameters . . . . .	5
2.3	Aspect . . . . .	6
2.4	Star Slots . . . . .	9
2.4.1	Slot 3 . . . . .	9
2.4.2	Slot 4 . . . . .	10
2.4.3	Slot 5 . . . . .	11
2.4.4	Slot 6 . . . . .	12
2.4.5	Slot 7 . . . . .	13
2.5	FID Slots . . . . .	14
2.5.1	Slot 0 . . . . .	14
2.5.2	Slot 1 . . . . .	15
2.5.3	Slot 2 . . . . .	16
<b>A</b>	<b>Summary</b>	<b>17</b>
A.1	Status . . . . .	17
A.2	Comments . . . . .	17

# 1 Front

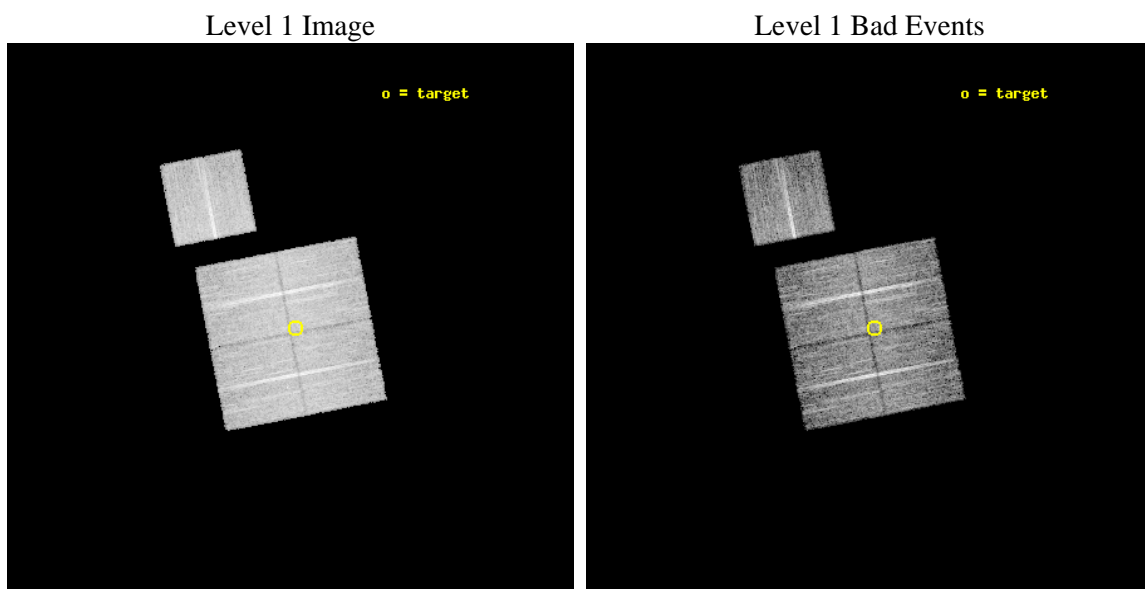
seq_num	900768	Sequence number
obs_id	8631	Observation id
title	Chandra Observations of the DEEP2 Fields	Proposal title
observer	Dr. Stephen Murray	Principal investigator
object	DEEP2 Field 2	Source name
dtcycle	0	&#160
cycle	P	events from which exps? Prim/Second/Both
ra_targ	253.14712	Observer's specified target RA [deg]
dec_targ	35.065734	Observer's specified target Dec [deg]
ra_nom	253.15693859253	Nominal RA [deg]
dec_nom	35.066642927744	Nominal Dec [deg]
roll_nom	349.10303953355	Nominal Roll [deg]
revision	2	Processing version of data
ontime	8986.2921882868	Sum of GTIs [s]
livetime	8868.8796652347	Livetime [s]
ontime0	8986.1690682769	Sum of GTIs [s]
ontime1	8986.2101082802	Sum of GTIs [s]
ontime2	8983.1101879478	Sum of GTIs [s]
ontime3	8986.2921882868	Sum of GTIs [s]
ontime6	8986.1280282736	Sum of GTIs [s]
l2events	29857	Number of level 2 events



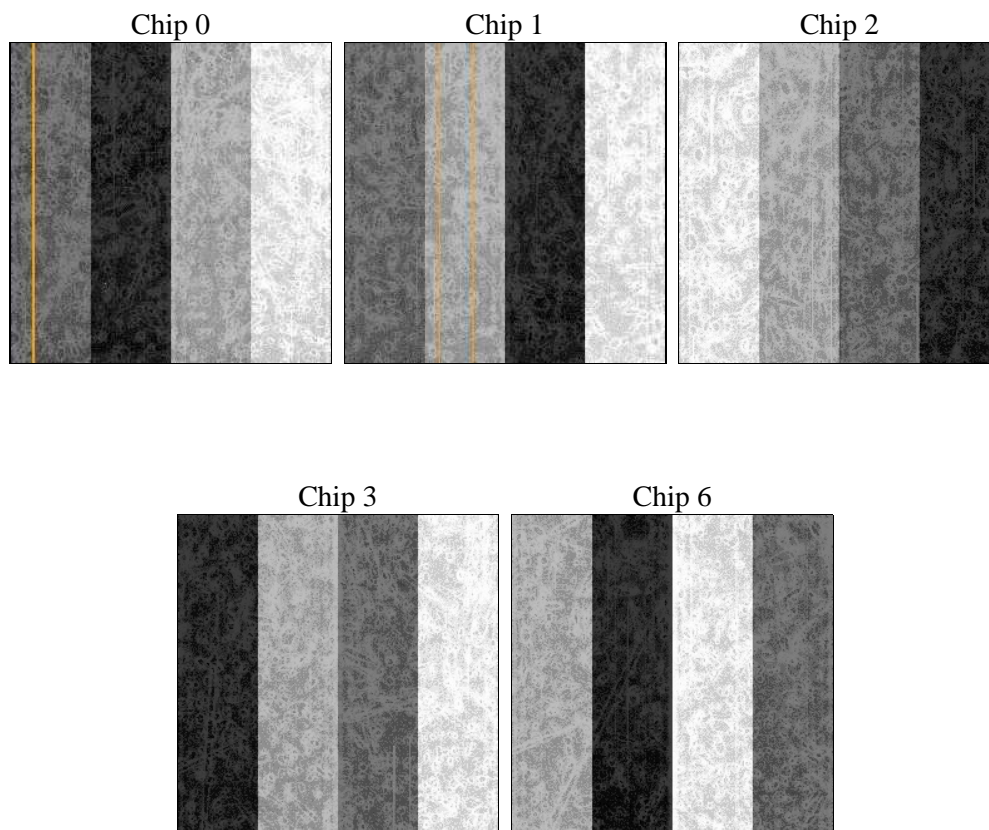
## 2 OBI

### 2.1 OBI

#### 2.1.1 Images



#### 2.1.2 Bias



### 2.1.3 Parameters

obi_num	0	Obi number	sched_exp_time	8941.000000	[s] Scheduled observation exposure time
ascdsver	8.4.4	Processing system revision	ontime	8986.2921882868	Sum of GTIs [s]
caldsver	4.4.9	&#160	ontime0	8986.1690682769	Sum of GTIs [s]
date	2012-05-05T05:21:13	Date and time of file creation	ontime1	8986.2101082802	Sum of GTIs [s]
revision	2	Processing version of data	ontime2	8983.1101879478	Sum of GTIs [s]
			ontime3	8986.2921882868	Sum of GTIs [s]
			ontime6	8986.1280282736	Sum of GTIs [s]
			l1events	348610	Number of level 1 events

### 2.1.4 Events

	ccd 0	ccd 1	ccd 2	ccd 3	ccd 6
level 1 events	67415	65432	71948	72774	71041
rejected events	60092	57573	64968	66182	63841
rejected %	89%	87%	90%	90%	89%

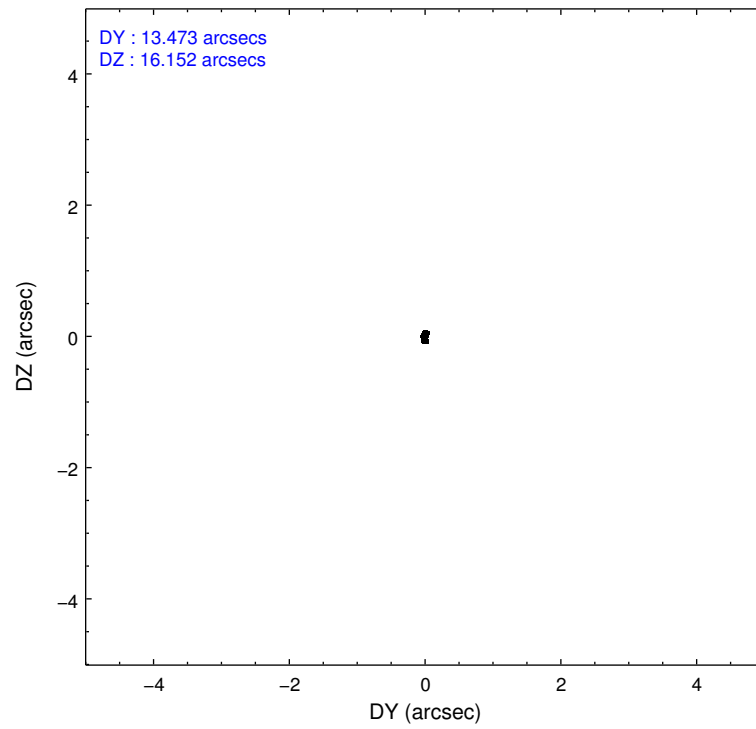
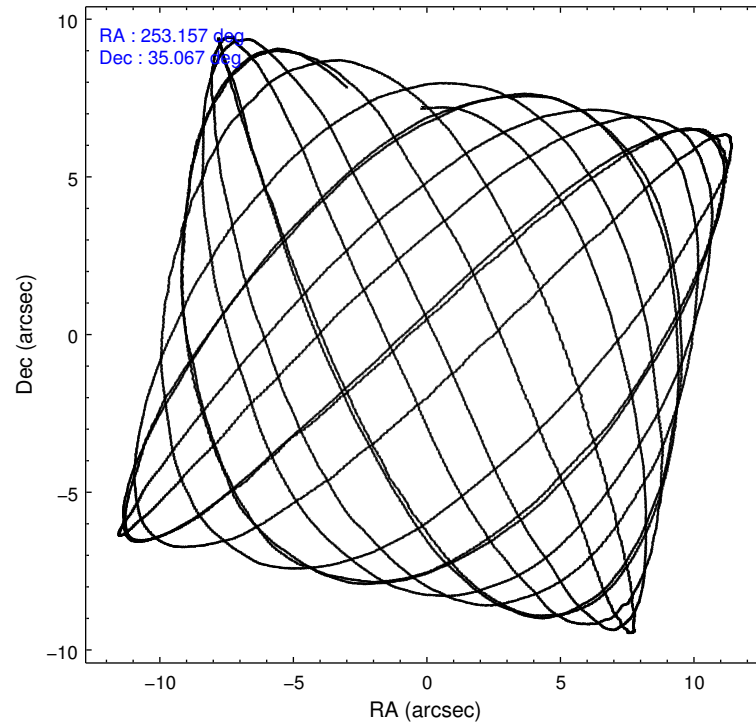
	ccd 0	ccd 1	ccd 2	ccd 3	ccd 6
grade 0 events	2579	2786	2528	2334	2500
	3%	4%	3%	3%	3%
grade 1 events	39	28	46	36	37
	0%	0%	0%	0%	0%
grade 2 events	1777	1798	1671	1438	1563
	2%	2%	2%	1%	2%
grade 3 events	812	865	723	769	746
	1%	1%	1%	1%	1%
grade 4 events	766	832	772	713	819
	1%	1%	1%	0%	1%
grade 5 events	2426	2713	2506	2851	2817
	3%	4%	3%	3%	3%
grade 6 events	1392	1579	1289	1340	1581
	2%	2%	1%	1%	2%
grade 7 events	57624	54831	62413	63293	60978
	85%	83%	86%	86%	85%

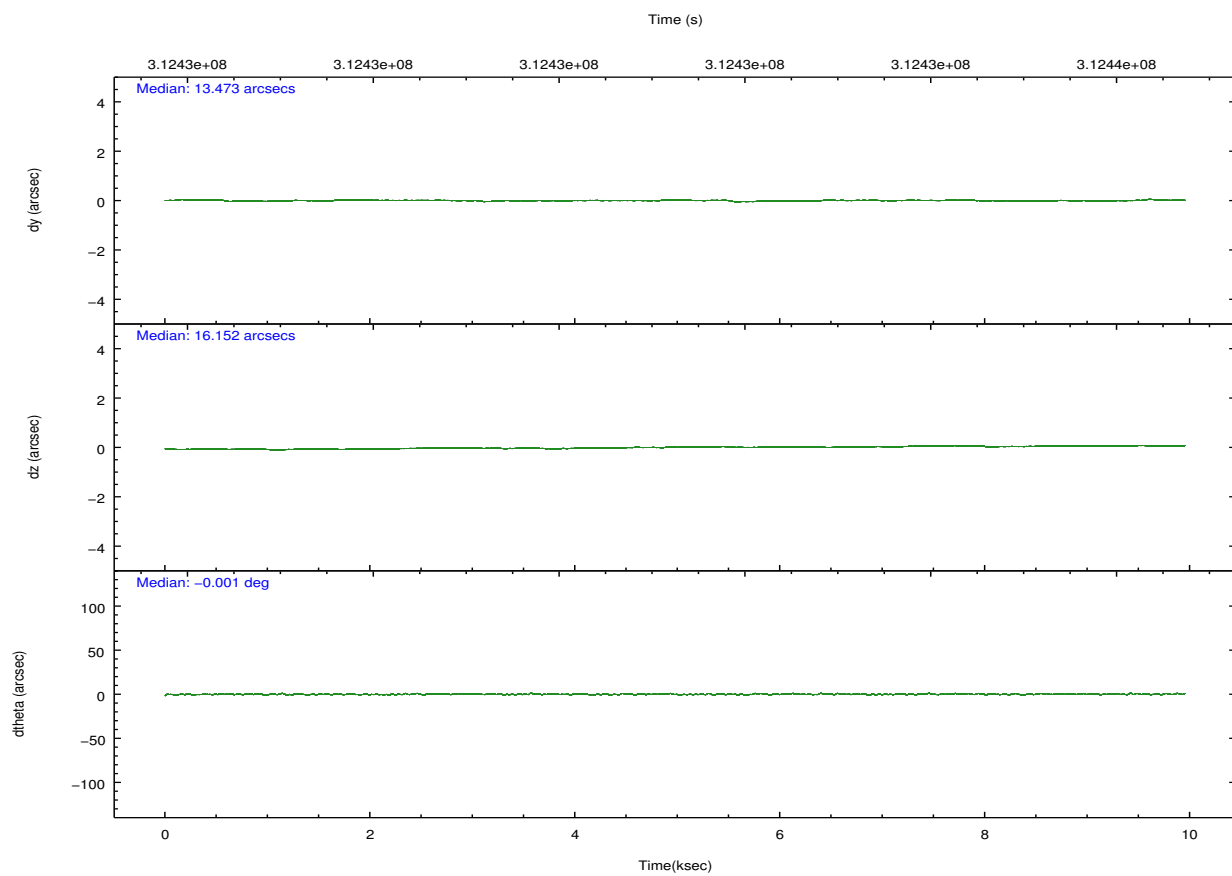
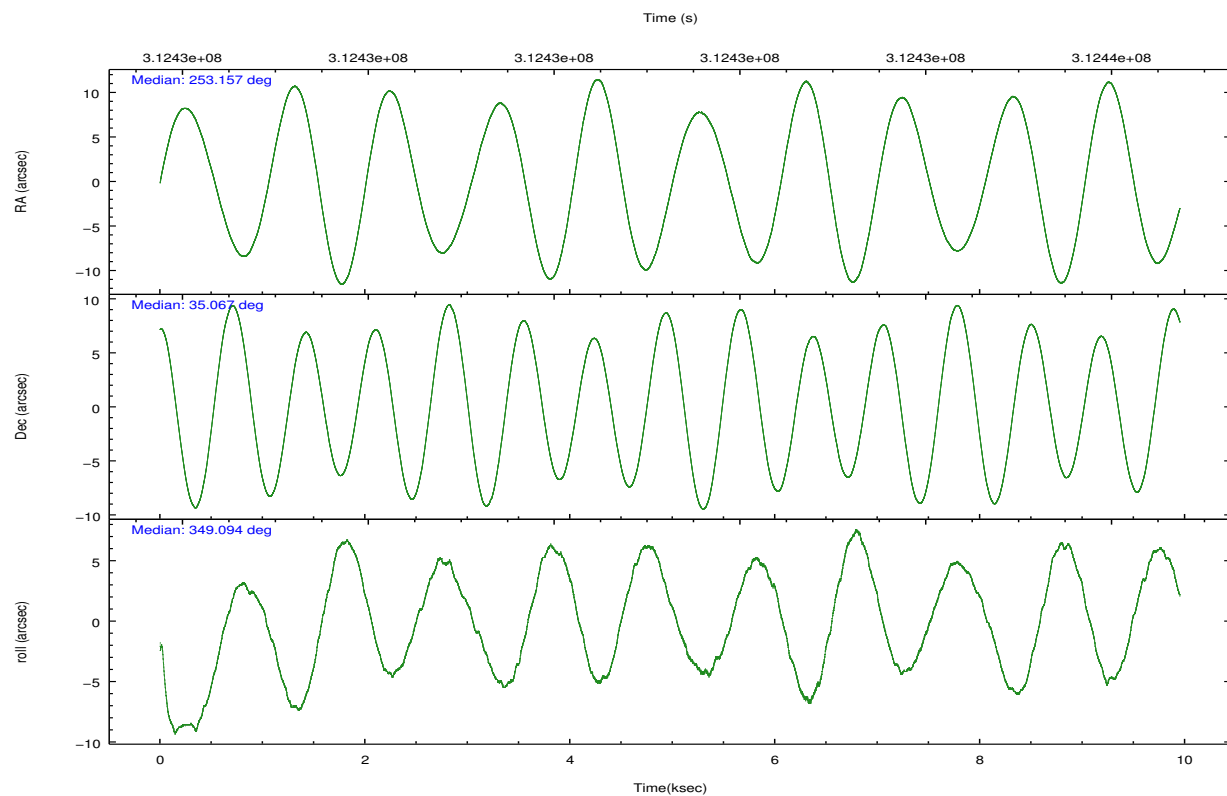


## 2.2 Compared Parameters

Parameter	Planned	Actual	Parameter	Planned	Actual
Instrument	ACIS	ACIS	Obspar format version number	7	7
Detector	ACIS-01236	ACIS-01236	Obspar file type	PREDICTED	ACTUAL
Grating	NONE	NONE	Obspar update status	NONE	UPDATED
Data mode	VFAINT	VFAINT	CCD I0 on	Y	Y
Observation mode	POINTING	POINTING	CCD I1 on	Y	Y
[deg] Pointing RA	253.125239	253.1569385925284	CCD I2 on	Y	Y
[deg] Pointing Dec	35.057534	35.06664292774391	CCD I3 on	Y	Y
[deg] Pointing Roll	348.912570	349.1030395335532	CCD S0 on	N	N
[mm] SIM focus pos	-0.782348	-0.7809083437167272	CCD S1 on	N	N
[mm] SIM defocus	0	0.001439871863259334	CCD S2 on	O1	Y
[mm] SIM translation stage pos	-233.592463	-233.5874344608287	CCD S3 on	N	N
[mm] SIM translation stage offset	0	-0.005018542100998502	CCD S4 on	N	N
[s] Observation start time (MET)	312427287.184000	312425944.50265	CCD S5 on	N	N
Observation start date	2007-11-26T01:20:22	2007-11-26T00:59:04	Number of optional ACIS chips dropped	0	0
[s] Observation end time (MET)	312436228.184000	312436362.09065	On-chip summing requested	N	N
Observation end date	2007-11-26T03:49:23	2007-11-26T03:52:42	Subarray requested	NONE	NONE
Read mode	TIMED	TIMED	Alternating exposures requested	N	N
			[s] Primary exposure time	0.000000	3.1

## 2.3 Aspect



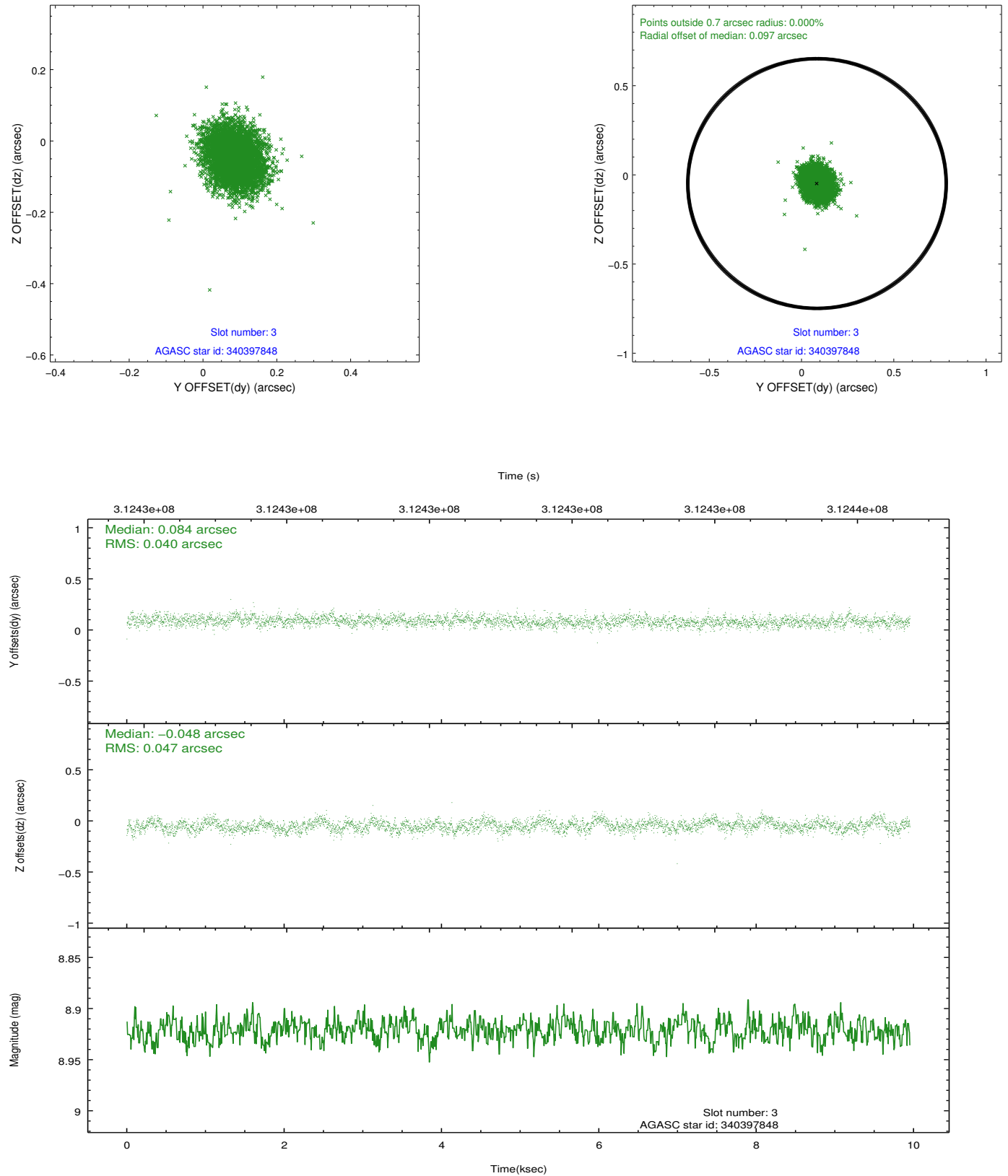


### Slot Statistics

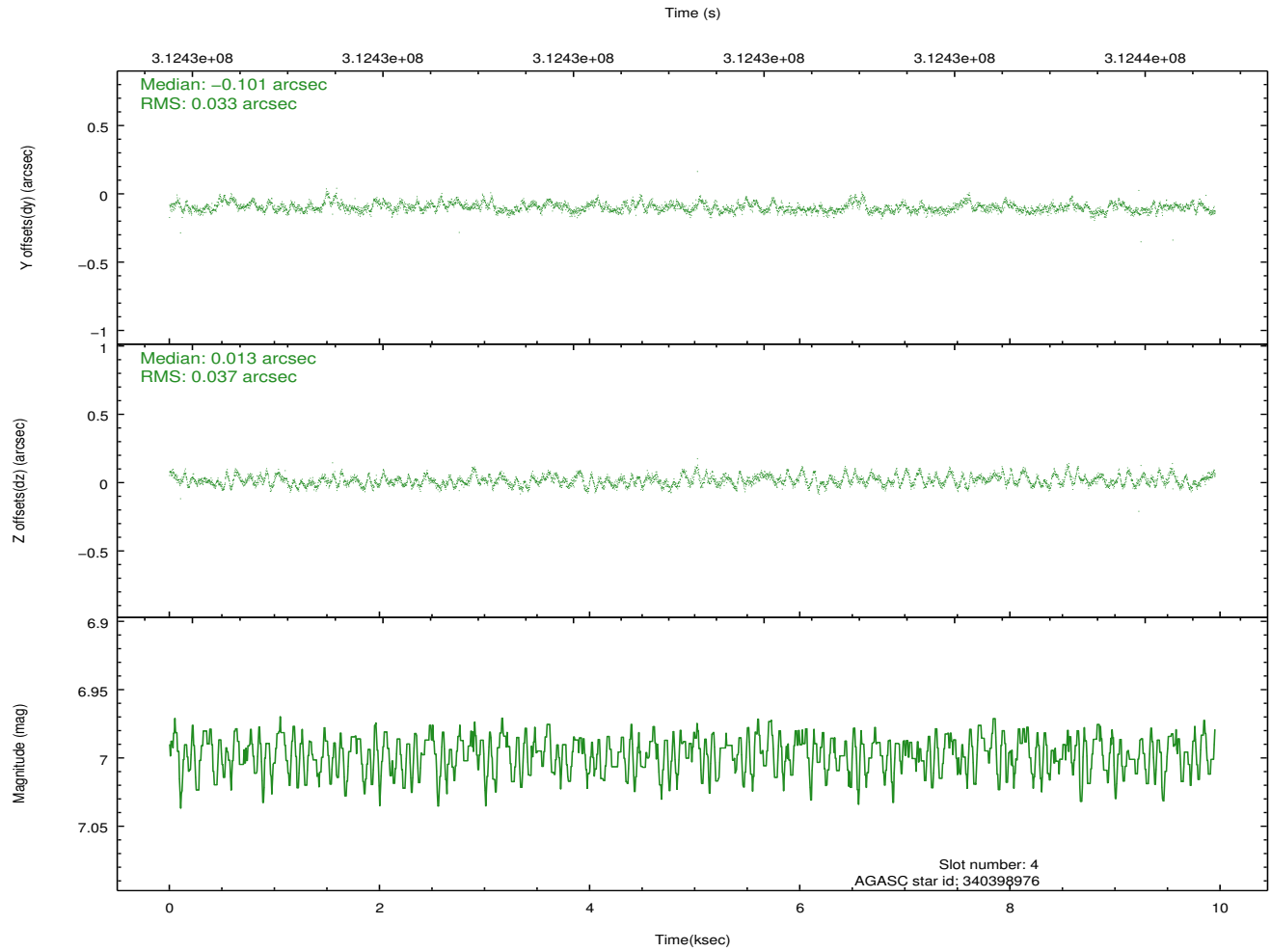
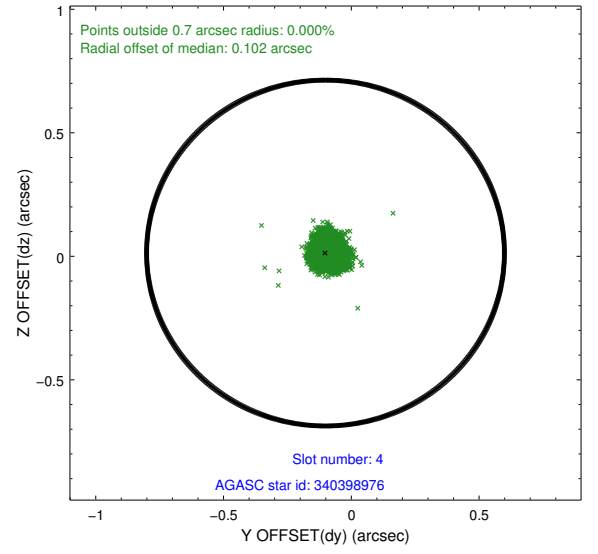
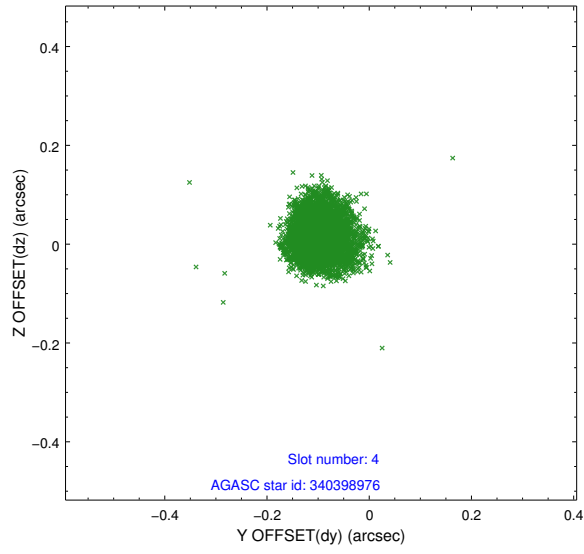
slot	status	id	mag	n_pts	med_dy	med_dz	dr1	dr2	ra	dec	mean_y	mean_z
0	FID	ACIS-I-1	7.22	2428	0.059	-0.047	0.013	0.019	0.000000	0.000000	926.07	-839.84
1	FID	ACIS-I-5	7.22	2428	-0.209	0.058	0.010	0.016	0.000000	0.000000	-1821.97	1057.54
2	FID	ACIS-I-6	7.23	2426	0.059	0.058	0.008	0.014	0.000000	0.000000	391.08	1702.60
3	GUIDE	340397848	8.92	4853	0.084	-0.048	0.065	0.106	252.880784	35.553189	-1045.78	1614.13
4	GUIDE	340398976	7.00	4855	-0.101	0.013	0.052	0.084	253.047352	35.489638	-523.41	1483.10
5	GUIDE	340401120	8.17	4855	0.054	-0.189	0.066	0.104	253.574895	35.128140	1250.22	507.30
6	GUIDE	340402112	8.48	4854	0.019	0.127	0.068	0.108	253.640936	34.860529	1631.24	-398.58
7	GUIDE	340402736	8.41	4852	-0.061	0.096	0.063	0.106	253.290822	34.696333	731.76	-1181.17

## 2.4 Star Slots

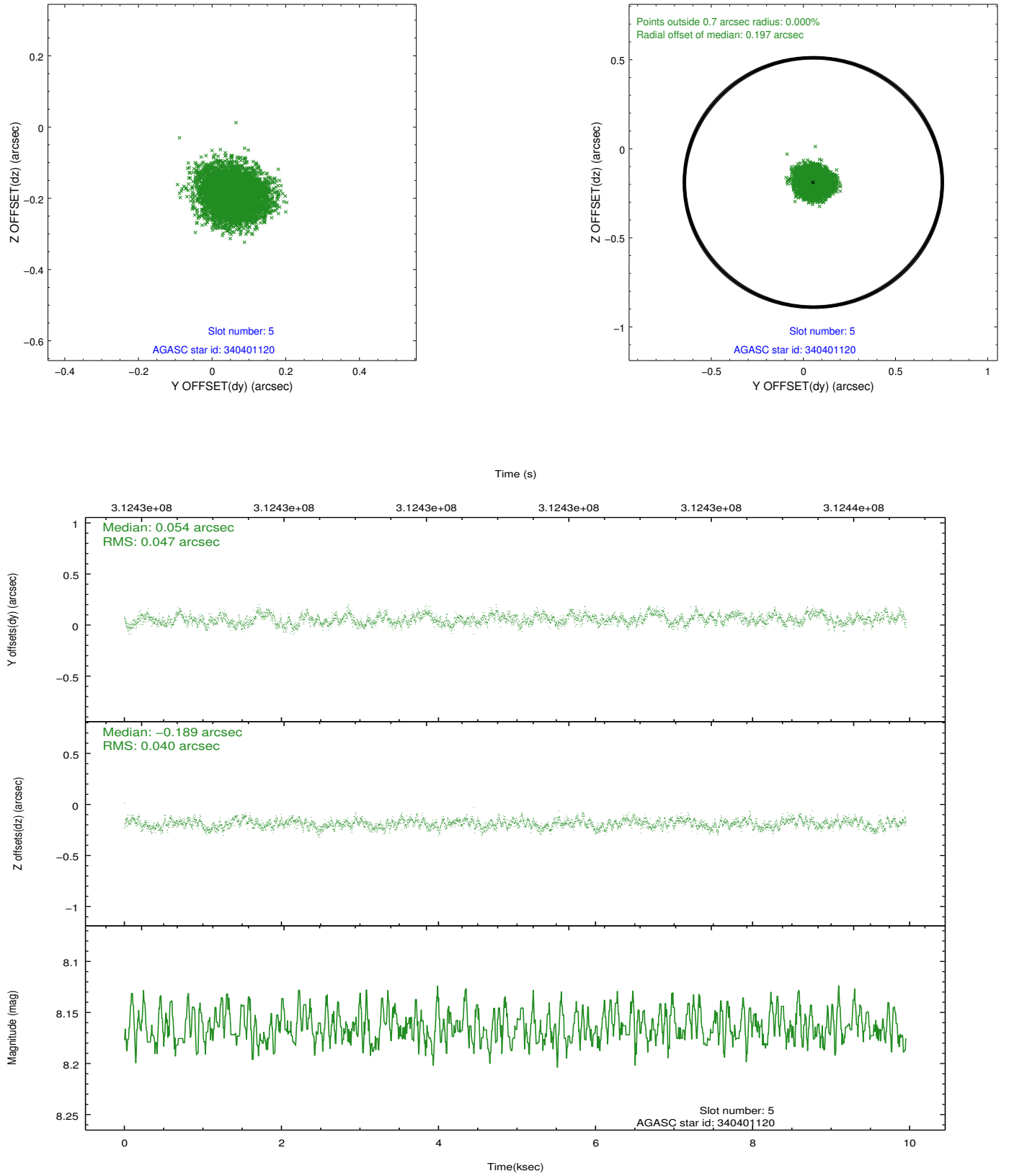
### 2.4.1 Slot 3



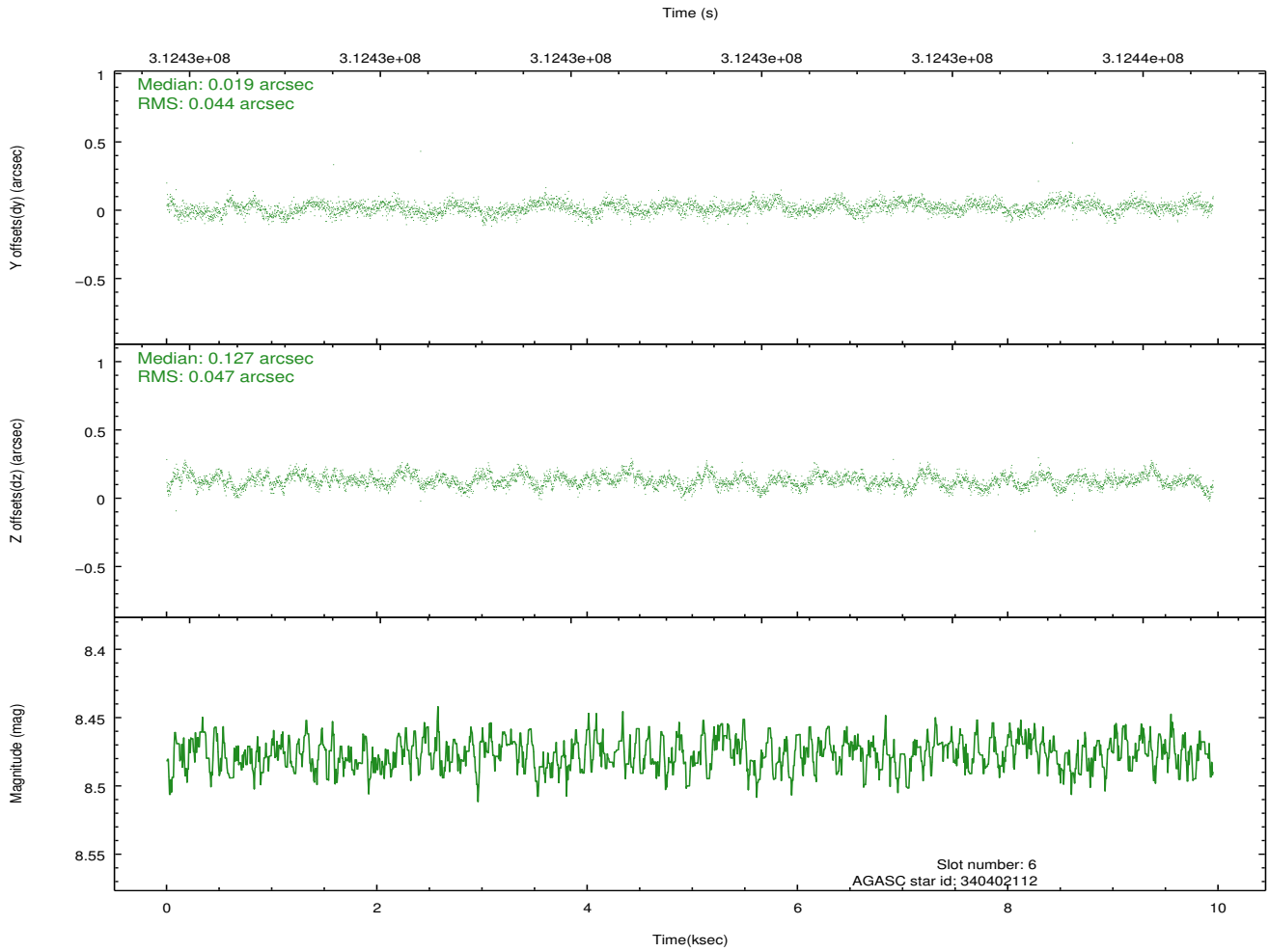
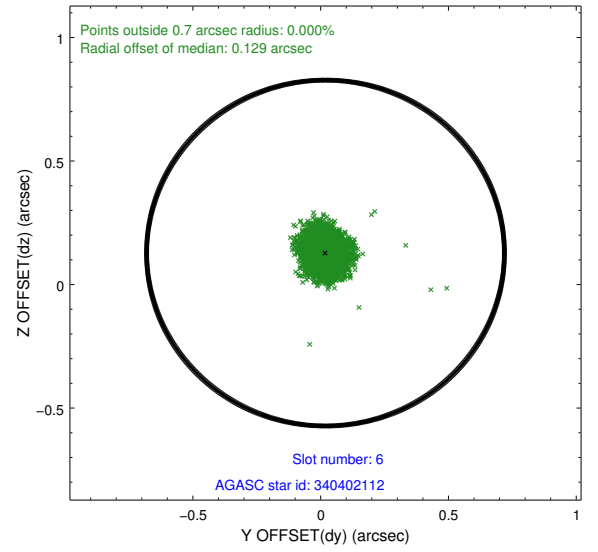
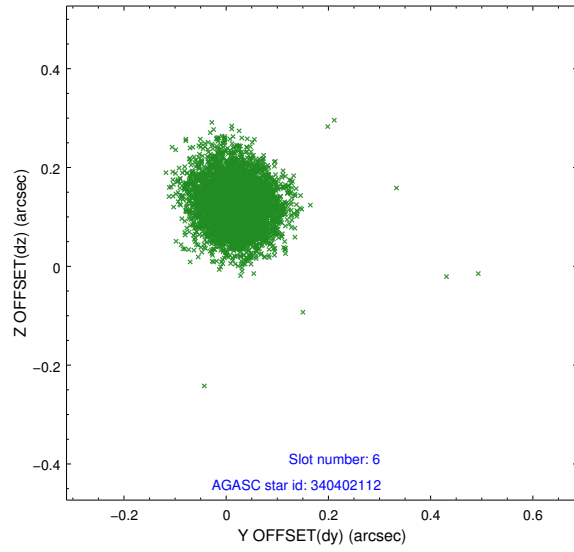
## 2.4.2 Slot 4



### 2.4.3 Slot 5

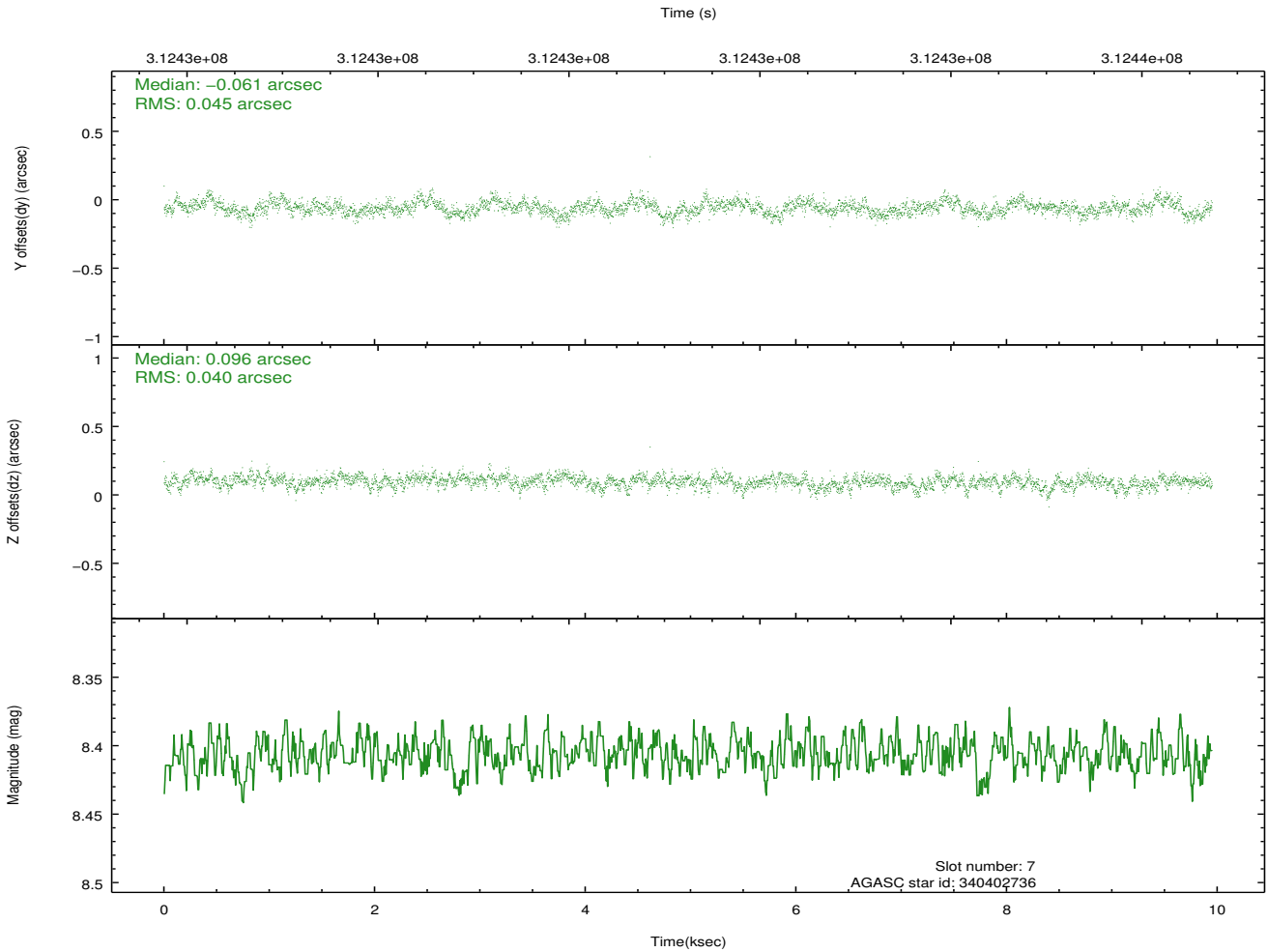
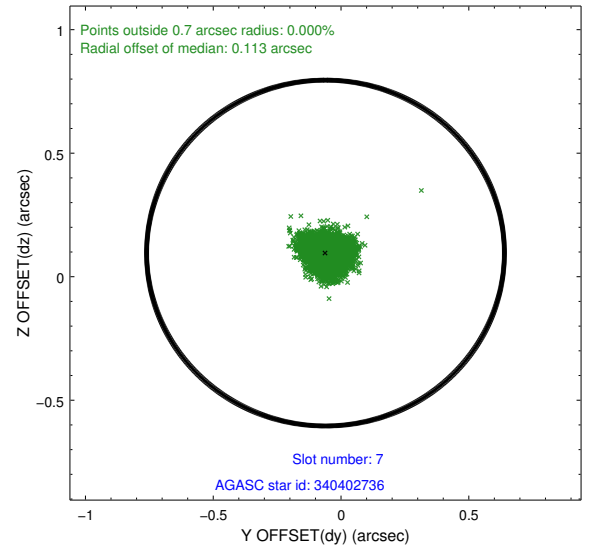
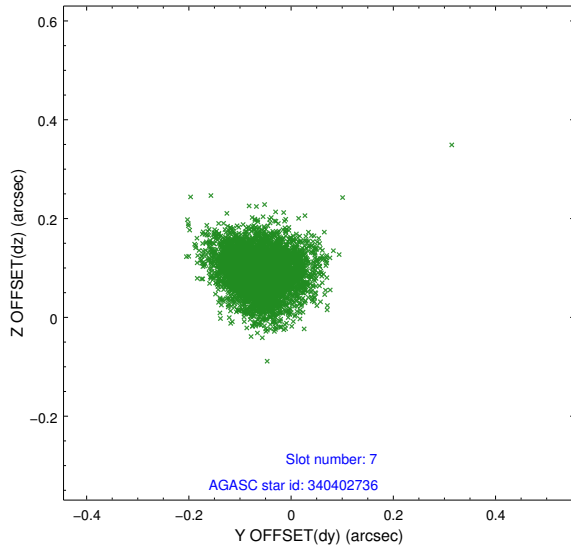


## 2.4.4 Slot 6



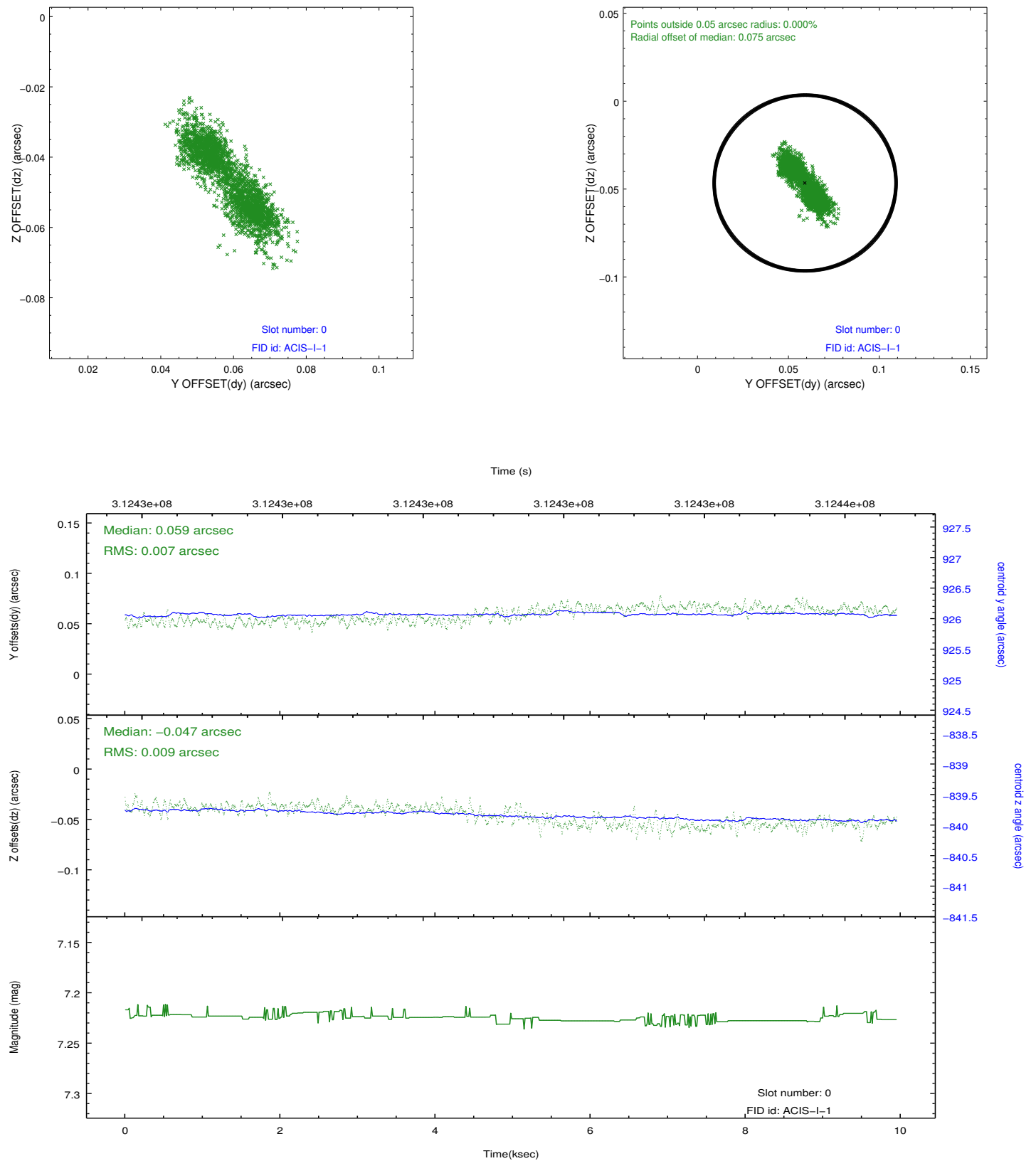


## 2.4.5 Slot 7

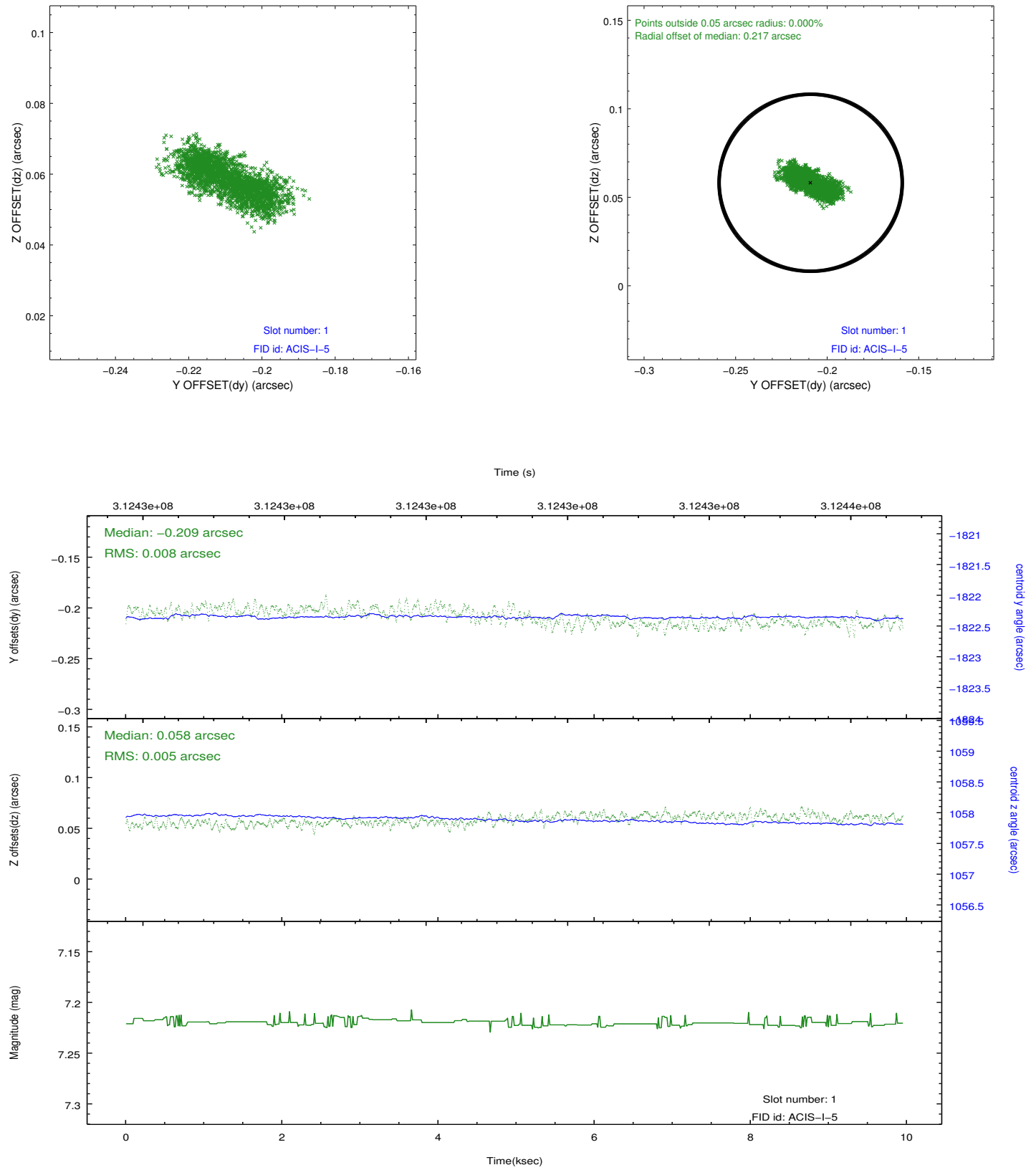


## 2.5 FID Slots

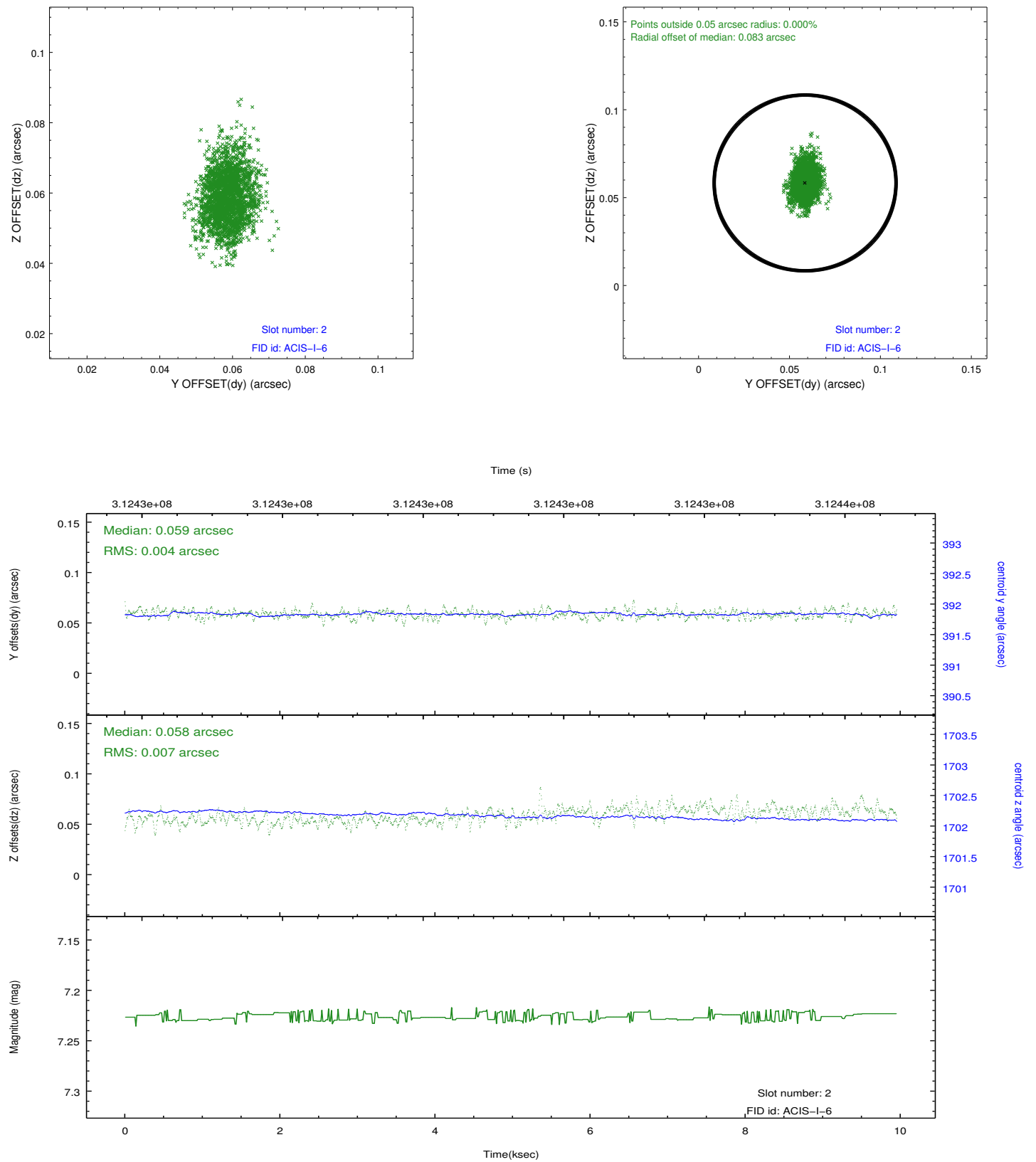
### 2.5.1 Slot 0



## 2.5.2 Slot 1



### 2.5.3 Slot 2



## A Summary

### A.1 Status

V&V Scientist	Jen Lauer
V&V Date (YYYY-MM-DD)	2012.05.07
V&V Edition	1
V&V Disposition and Status	OK
V&V Charge Time	8.98690006

### A.2 Comments