

# V&V Reference Report

## L2 ASCDS Version : 7.6.10

Observation 61391 - L2 Version 001  
Chandra X-Ray Center

L2 Processing Date : Jan 18 2007

## Contents

<b>1</b>	<b>Front</b>	<b>2</b>
<b>2</b>	<b>OBI</b>	<b>3</b>
2.1	OBI . . . . .	3
2.1.1	Images . . . . .	3
2.1.2	Bias . . . . .	3
2.1.3	Parameters . . . . .	4
2.1.4	Events . . . . .	4
2.2	Compared Parameters . . . . .	5
2.3	Star Slots . . . . .	6
2.4	FID Slots . . . . .	6
<b>A</b>	<b>Summary</b>	<b>7</b>
A.1	Status . . . . .	7
A.2	Comments . . . . .	7

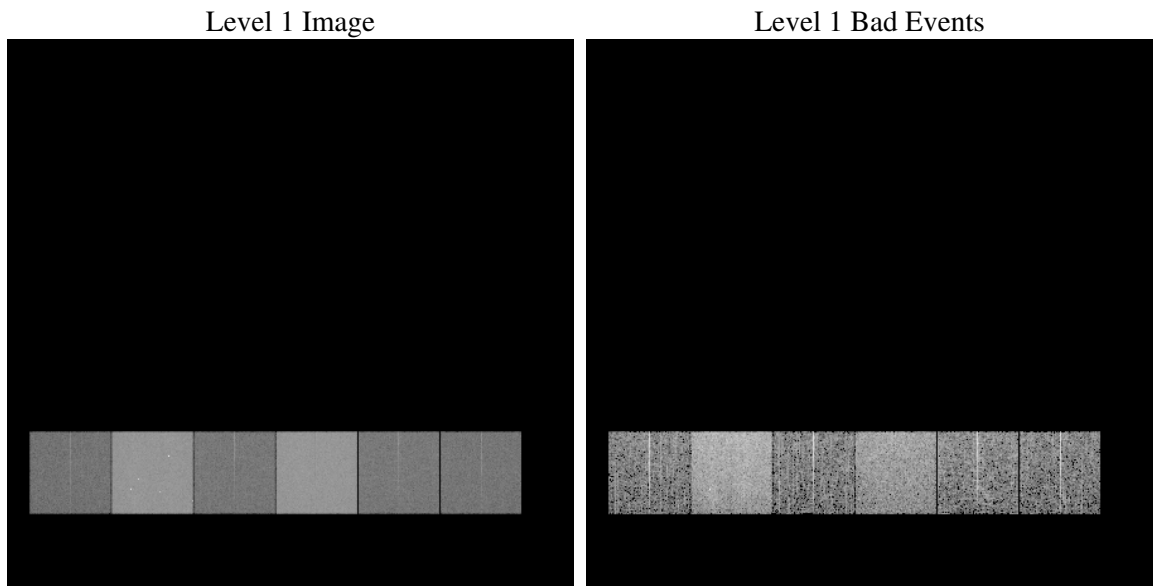
# 1 Front

seq_num	&#160
obs_id	61391
title	ACIS-456789 diagnostics
observer	CHANDRA engineering request/realtime commanding
object	&#160
dtcycle	0
cycle	P
ra_targ	0.0
dec_targ	0.0
ra_nom	345.03956919078
dec_nom	-60.020684254673
roll_nom	280.99774534725
revision	2
ontime	6131.1021457165
livetime	6053.466438641
ontime4	2352.2304661125
ontime5	6578.3948533088
ontime6	2517.4826152325
ontime7	6131.1021457165
ontime8	2575.9030163139
ontime9	2471.9848556221
l2events	1214431

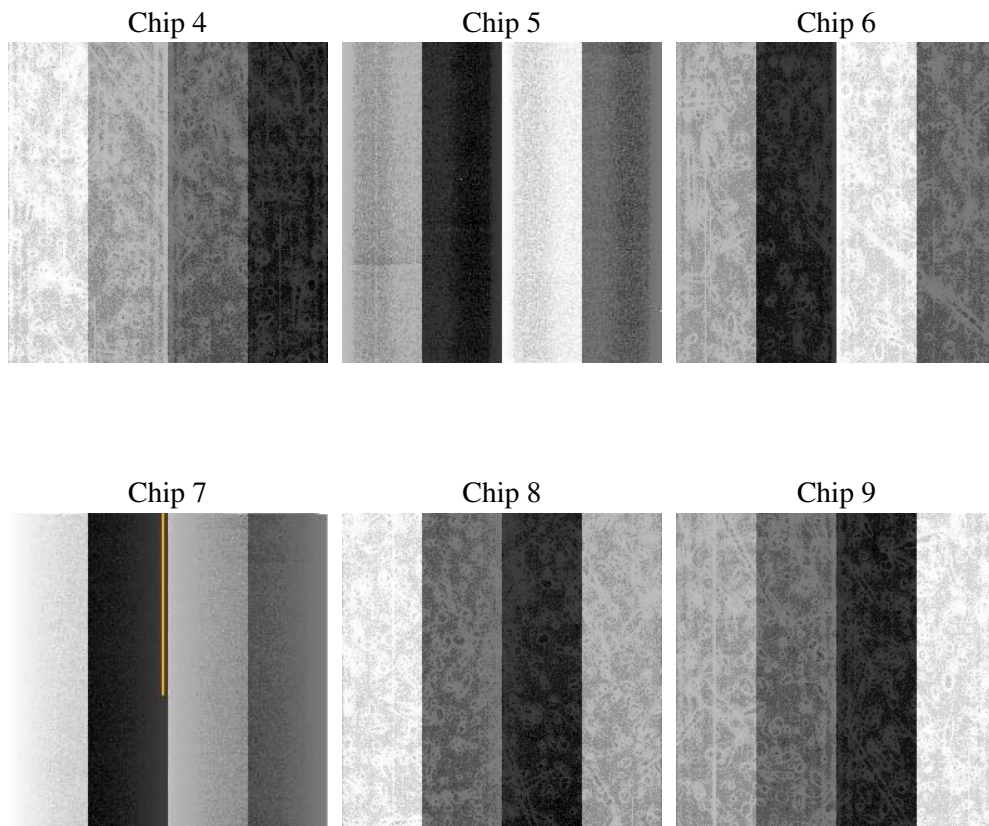
## 2 OBI

### 2.1 OBI

#### 2.1.1 Images



#### 2.1.2 Bias



### 2.1.3 Parameters

obi_num	1
ascdsver	7.6.10
caldsver	3.3.0
date	2007-01-18T09:03:33
revision	2

sched_exp_time	0.0
ontime	6131.1021457165
ontime4	2352.2304661125
ontime5	6578.3948533088
ontime6	2517.4826152325
ontime7	6131.1021457165
ontime8	2575.9030163139
ontime9	2471.9848556221
l1events	1423853

### 2.1.4 Events

	ccd 4	ccd 5	ccd 6	ccd 7	ccd 8	ccd 9
level 1 events	147894	384177	167823	390820	173653	159486
rejected events	18948	44854	19272	32303	21485	18444
rejected %	12%	11%	11%	8%	12%	11%

	ccd 4	ccd 5	ccd 6	ccd 7	ccd 8	ccd 9
grade 0 events	72850	86630	81236	90982	83740	77170
	49%	22%	48%	23%	48%	48%
grade 1 events	379	374	379	245	405	354
	0%	0%	0%	0%	0%	0%
grade 2 events	22870	117314	25783	79554	26619	25284
	15%	30%	15%	20%	15%	15%
grade 3 events	7964	22588	9102	36392	9700	8897
	5%	5%	5%	9%	5%	5%
grade 4 events	7949	22502	9227	36291	9683	8654
	5%	5%	5%	9%	5%	5%
grade 5 events	1242	8510	1334	6621	1621	1398
	0%	2%	0%	1%	0%	0%
grade 6 events	17313	90289	23203	115298	22426	21037
	11%	23%	13%	29%	12%	13%
grade 7 events	17327	35970	17559	25437	19459	16692
	11%	9%	10%	6%	11%	10%

## 2.2 Compared Parameters

Parameter	Planned	Actual	Parameter	Planned	Actual
Instrument	ACIS	ACIS	Obspar format version number	6	6
Detector	ACIS-456789	ACIS-456789	Obspar file type	PREDICTED	ACTUAL
Grating	NONE	NONE	Obspar update status	NONE	UPDATED
Data mode	FAINT	FAINT	On-chip summing requested	N	N
Observation mode	SECONDARY	SECONDARY	Subarray requested	NONE	NONE
Pointing RA	0	345.0395691907849	Alternating exposures requested	N	N
Pointing Dec	0	-60.02068425467291	Primary exposure time	0.000000	3.2
Pointing Roll	0.0	280.9977453472525			
SIM focus pos (mm)	-0.684267	-0.6828225247311905			
SIM defocus (mm)	0	0.8505141146731063			
SIM translation stage pos (mm)	-190.132523	250.466033080201			
SIM translation stage offset (mm)	0	-0.01005468664627074			
Observation start time	124275347.614	124275346.84598			
Observation start date	2001-12-09T08:55:48	2001-12-09T08:55:46			
Observation end time	124310578.916	124310578.14738			
Observation end date	2001-12-09T18:42:59	2001-12-09T18:42:58			
Read mode	TIMED	TIMED			

## **2.3 Star Slots**

## **2.4 FID Slots**

## A Summary

### A.1 Status

V&V Scientist	Jen Lauer
V&V Date (YYYY-MM-DD)	2007.01.18
V&V Edition	1
V&V Disposition and Status	OK
V&V Charge Time	6.13110214

### A.2 Comments