

V&V Reference Report

L2 ASCDS Version : 8.5.1.1

Observation 5611 - L2 Version 3
Chandra X-Ray Center

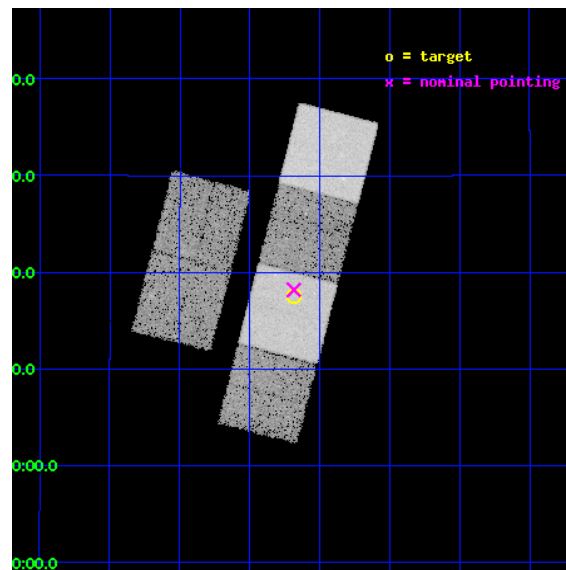
L2 Processing Date : Dec 20 2012

Contents

1	Front	2
2	OBI	3
2.1	OBI	3
2.1.1	Images	3
2.1.2	Bias	3
2.1.3	Parameters	4
2.1.4	Events	4
2.2	Compared Parameters	5
2.3	Aspect	6
2.4	Star Slots	9
2.4.1	Slot 3	9
2.4.2	Slot 4	10
2.4.3	Slot 5	11
2.4.4	Slot 6	12
2.4.5	Slot 7	13
2.5	FID Slots	14
2.5.1	Slot 0	14
2.5.2	Slot 1	15
2.5.3	Slot 2	16
A	Summary	17
A.1	Status	17
A.2	Comments	17

1 Front

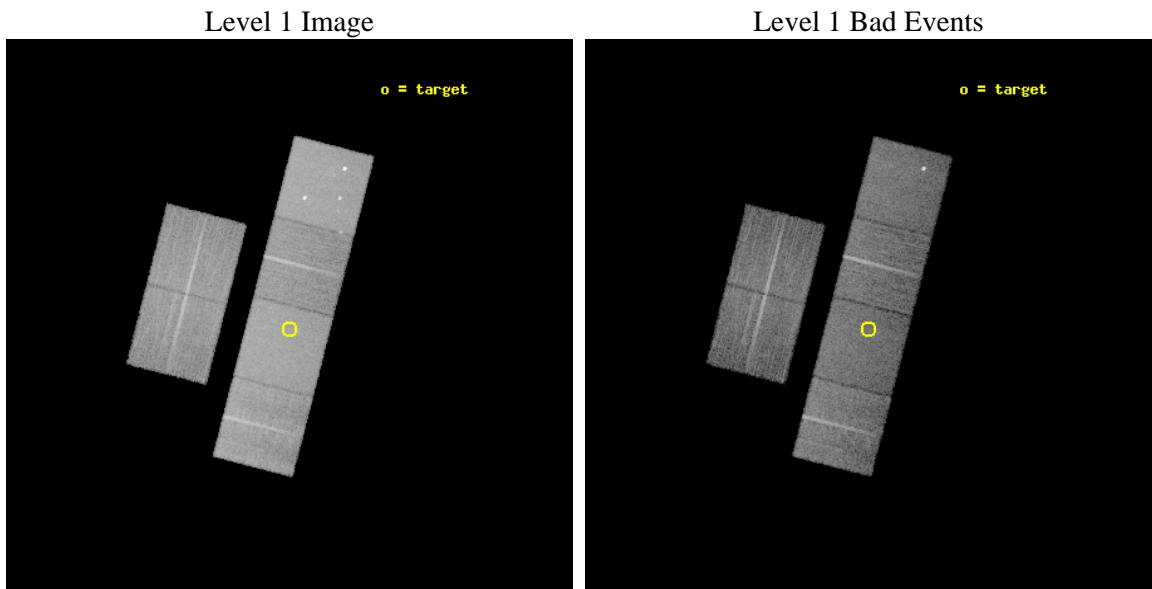
seq_num	701034	Sequence number
obs_id	5611	Observation id
title	A Chandra Survey of the Most Distant Quasars: X-raying the First Massive Black Holes	Proposal title
observer	Prof. William Brandt	Principal investigator
object	SDSS J1411+1217	Source name
dtcycle	0	
cycle	P	events from which exps? Prim/Second/Both
ra_targ	212.797083	Observer's specified target RA [deg]
dec_targ	12.293694	Observer's specified target Dec [deg]
ra_nom	212.7963018921	Nominal RA [deg]
dec_nom	12.303344880383	Nominal Dec [deg]
roll_nom	104.42961548948	Nominal Roll [deg]
revision	3	Processing version of data
ontime	14457.599946141	Sum of GTIs [s]
livetime	14274.529110302	Livetime [s]
ontime2	14457.599946141	Sum of GTIs [s]
ontime3	14454.358965874	Sum of GTIs [s]
ontime5	14457.599946141	Sum of GTIs [s]
ontime6	14457.599946141	Sum of GTIs [s]
ontime7	14457.599946141	Sum of GTIs [s]
ontime8	14457.599946141	Sum of GTIs [s]
l2events	176146	Number of level 2 events



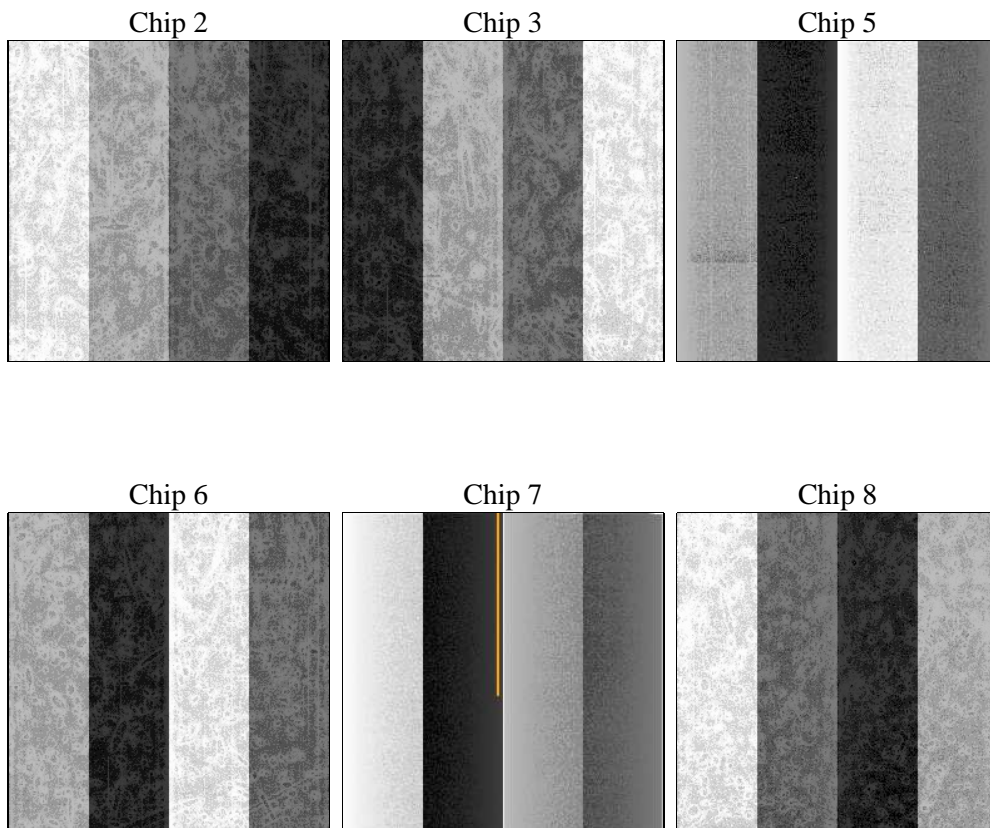
2 OBI

2.1 OBI

2.1.1 Images



2.1.2 Bias



2.1.3 Parameters

obi_num	0	Obi number	sched_exp_time	14500.000000	[s] Scheduled observation exposure time
ascdsver	8.5.1.1	Processing system revision	ontime	14457.599946141	Sum of GTIs [s]
caldsver	4.5.5	 	ontime2	14457.599946141	Sum of GTIs [s]
date	2012-12-20T15:58:19	Date and time of file creation	ontime3	14454.358965874	Sum of GTIs [s]
revision	3	Processing version of data	ontime5	14457.599946141	Sum of GTIs [s]
			ontime6	14457.599946141	Sum of GTIs [s]
			ontime7	14457.599946141	Sum of GTIs [s]
			ontime8	14457.599946141	Sum of GTIs [s]
			l1events	772657	Number of level 1 events

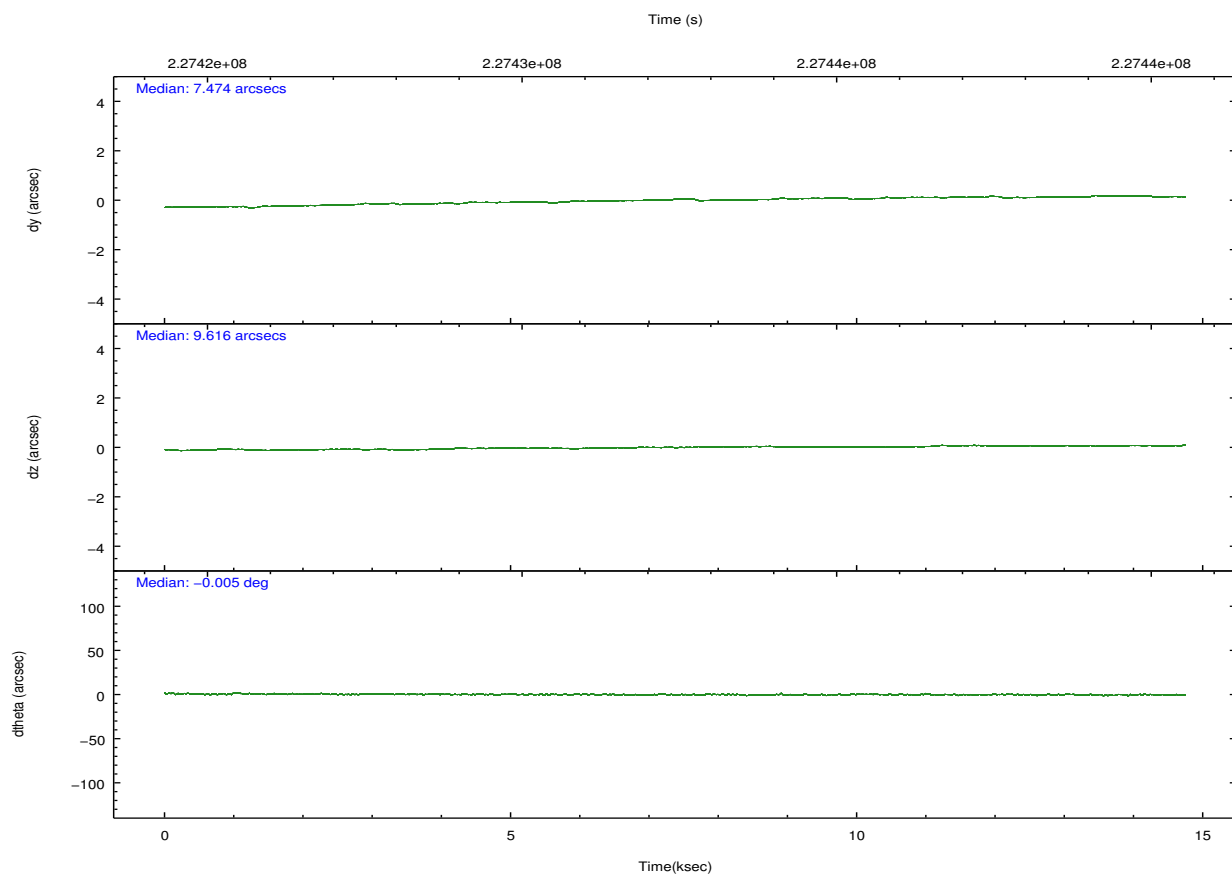
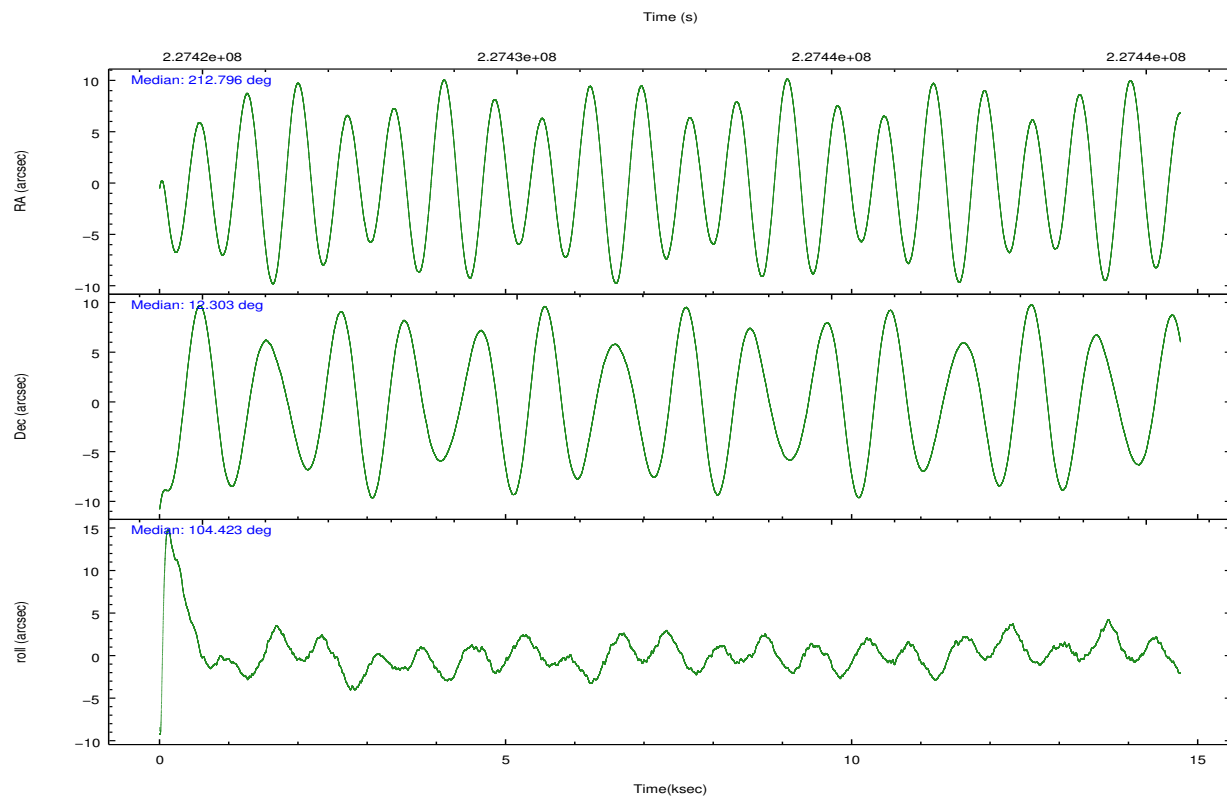
2.1.4 Events

	ccd 2	ccd 3	ccd 5	ccd 6	ccd 7	ccd 8		ccd 2	ccd 3	ccd 5	ccd 6	ccd 7	ccd 8
level 1 events	109666	102797	167611	108268	147861	136454	grade 0 events	5684	5646	10206	5523	5606	9715
rejected events	96791	90091	89715	94915	86609	107102		5%	5%	6%	5%	3%	7%
rejected %	88%	87%	53%	87%	58%	78%	grade 1 events	81	59	225	43	153	76
								0%	0%	0%	0%	0%	0%
							grade 2 events	2648	2425	23267	2798	12200	6492
								2%	2%	13%	2%	8%	4%
							grade 3 events	1208	1251	2887	1222	5296	2950
								1%	1%	1%	1%	3%	2%
							grade 4 events	1157	1202	2773	1169	5360	2870
								1%	1%	1%	1%	3%	2%
							grade 5 events	4527	4873	12368	5222	13917	6512
								4%	4%	7%	4%	9%	4%
							grade 6 events	2180	2186	38779	2645	32804	7327
								1%	2%	23%	2%	22%	5%
							grade 7 events	92181	85155	77106	89646	72525	100512
								84%	82%	46%	82%	49%	73%

2.2 Compared Parameters

Parameter	Planned	Actual	Parameter	Planned	Actual
Instrument	ACIS	ACIS	Obspar format version number	7	7
Detector	ACIS-235678	ACIS-235678	Obspar file type	PREDICTED	ACTUAL
Grating	NONE	NONE	Obspar update status	NONE	UPDATED
Data mode	FAINT	FAINT	Number of optional ACIS chips dropped	0	0
Observation mode	POINTING	POINTING	On-chip summing requested	N	N
[deg] Pointing RA	212.816108	212.796301892105	Subarray requested	NONE	NONE
[deg] Pointing Dec	12.284153	12.30334488038288	Alternating exposures requested	N	N
[deg] Pointing Roll	104.268787	104.429615489477	[s] Primary exposure time	0.000000	3.2
[mm] SIM focus pos	-0.684267	-0.6828225247311905			
[mm] SIM defocus	0	0.001444936568705701			
[mm] SIM translation stage pos	-190.132523	-190.1425803651734			
[mm] SIM translation stage offset	0	0.01005778216563158			
[s] Observation start time (MET)	227425307.184000	227424313.09335			
Observation start date	2005-03-17T05:40:43	2005-03-17T05:25:13			
[s] Observation end time (MET)	227439807.184000	227440408.66908			
Observation end date	2005-03-17T09:42:23	2005-03-17T09:53:28			
Read mode	TIMED	TIMED			

2.3 Aspect

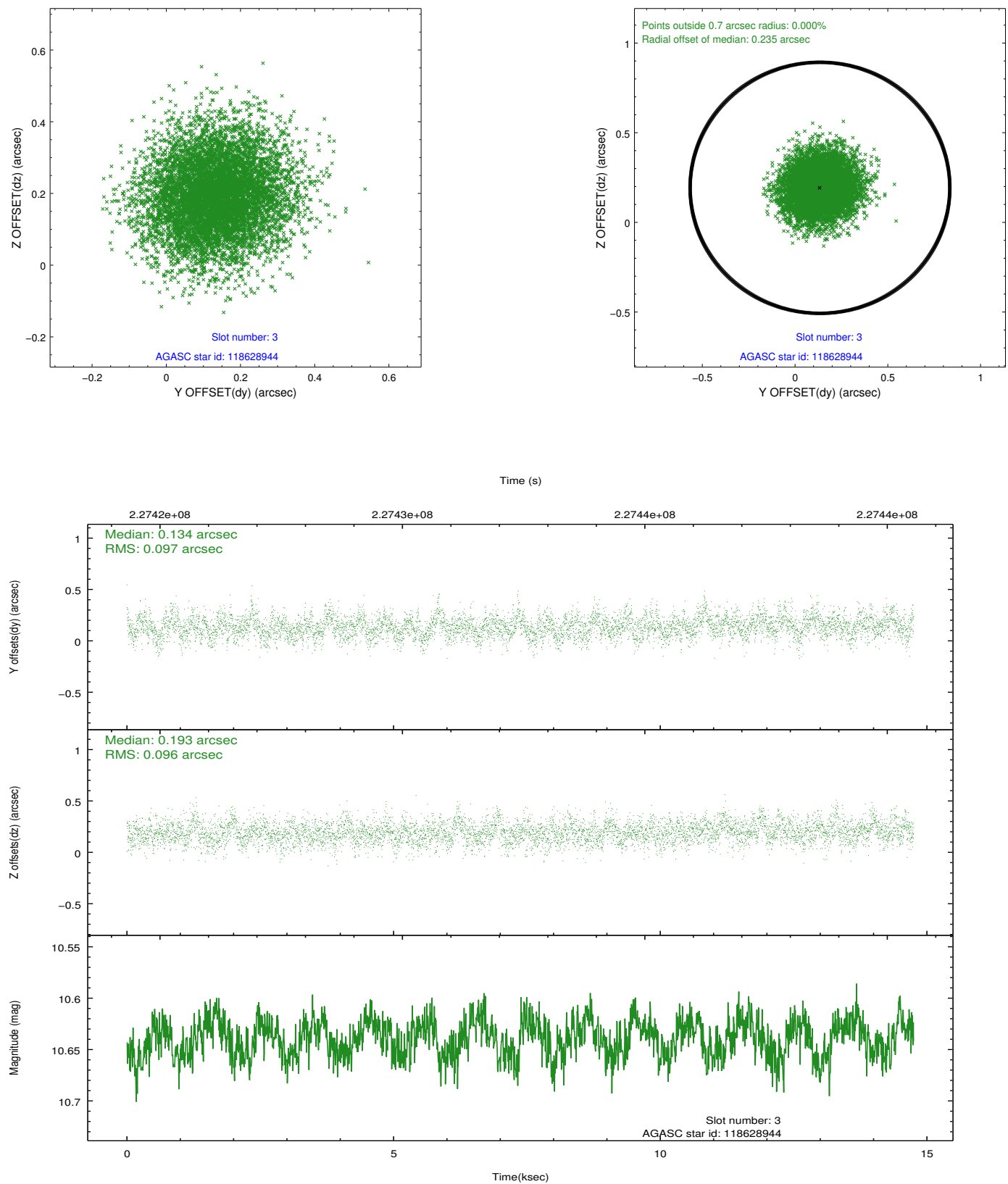


Slot Statistics

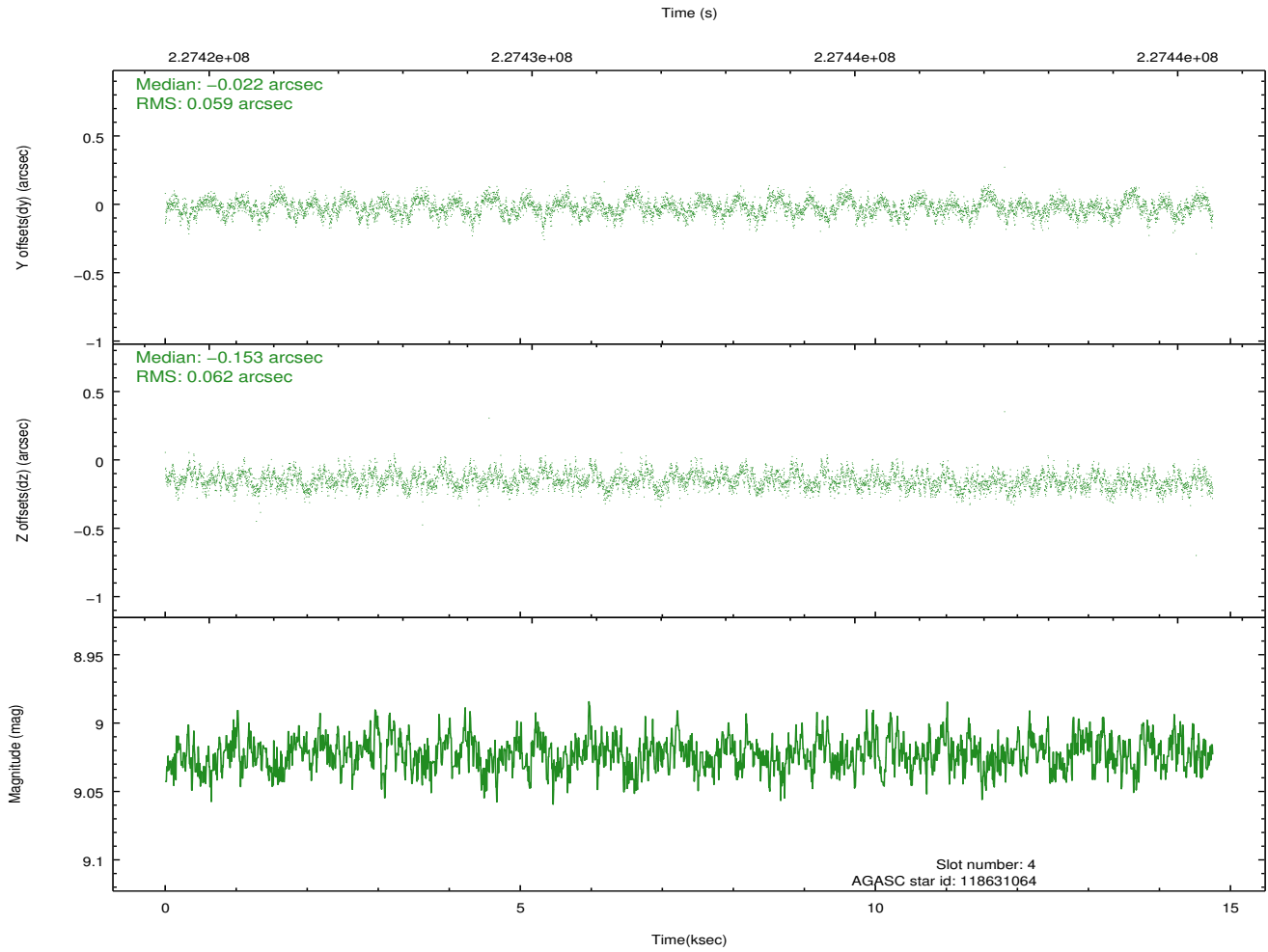
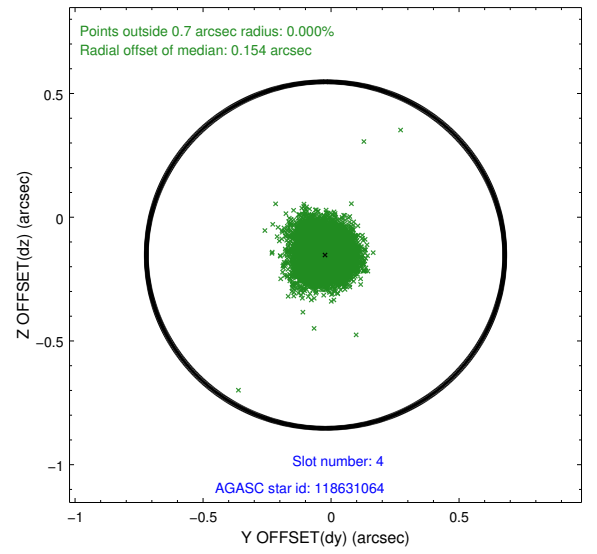
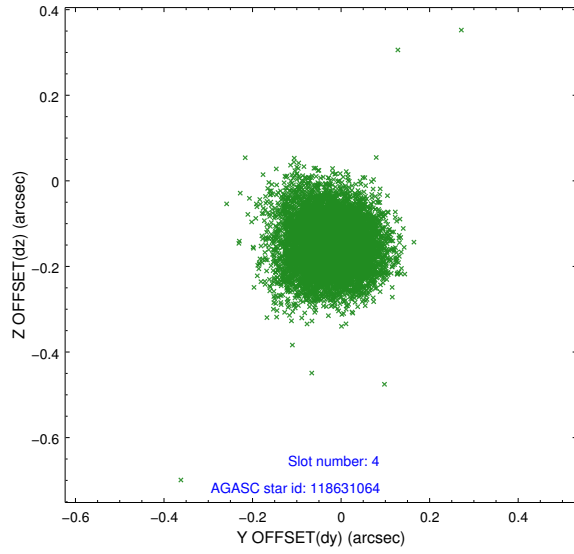
slot	status	id	mag	n_pts	med_dy	med_dz	dr1	dr2	ra	dec	mean_y	mean_z
0	FID	ACIS-S-2	7.10	3598	-0.037	-0.038	0.012	0.019	0.000000	0.000000	-760.22	-1730.84
1	FID	ACIS-S-4	7.20	3598	0.102	0.028	0.012	0.022	0.000000	0.000000	2153.02	177.44
2	FID	ACIS-S-5	7.23	3598	-0.095	0.019	0.011	0.019	0.000000	0.000000	-1812.75	171.38
3	GUIDE	118628944	10.64	7184	0.134	0.193	0.146	0.236	213.433124	11.875502	-1958.57	-1744.80
4	GUIDE	118631064	9.02	7191	-0.022	-0.153	0.090	0.144	212.287444	12.244527	321.93	1836.86
5	GUIDE	119021896	9.51	7189	-0.075	-0.119	0.097	0.155	212.526410	12.506556	1027.85	790.09
6	GUIDE	119022488	9.34	7192	-0.088	-0.064	0.096	0.156	212.245442	12.543111	1399.92	1713.33
7	GUIDE	119022824	9.66	7192	0.054	0.137	0.103	0.170	212.791020	12.549000	946.15	-148.97

2.4 Star Slots

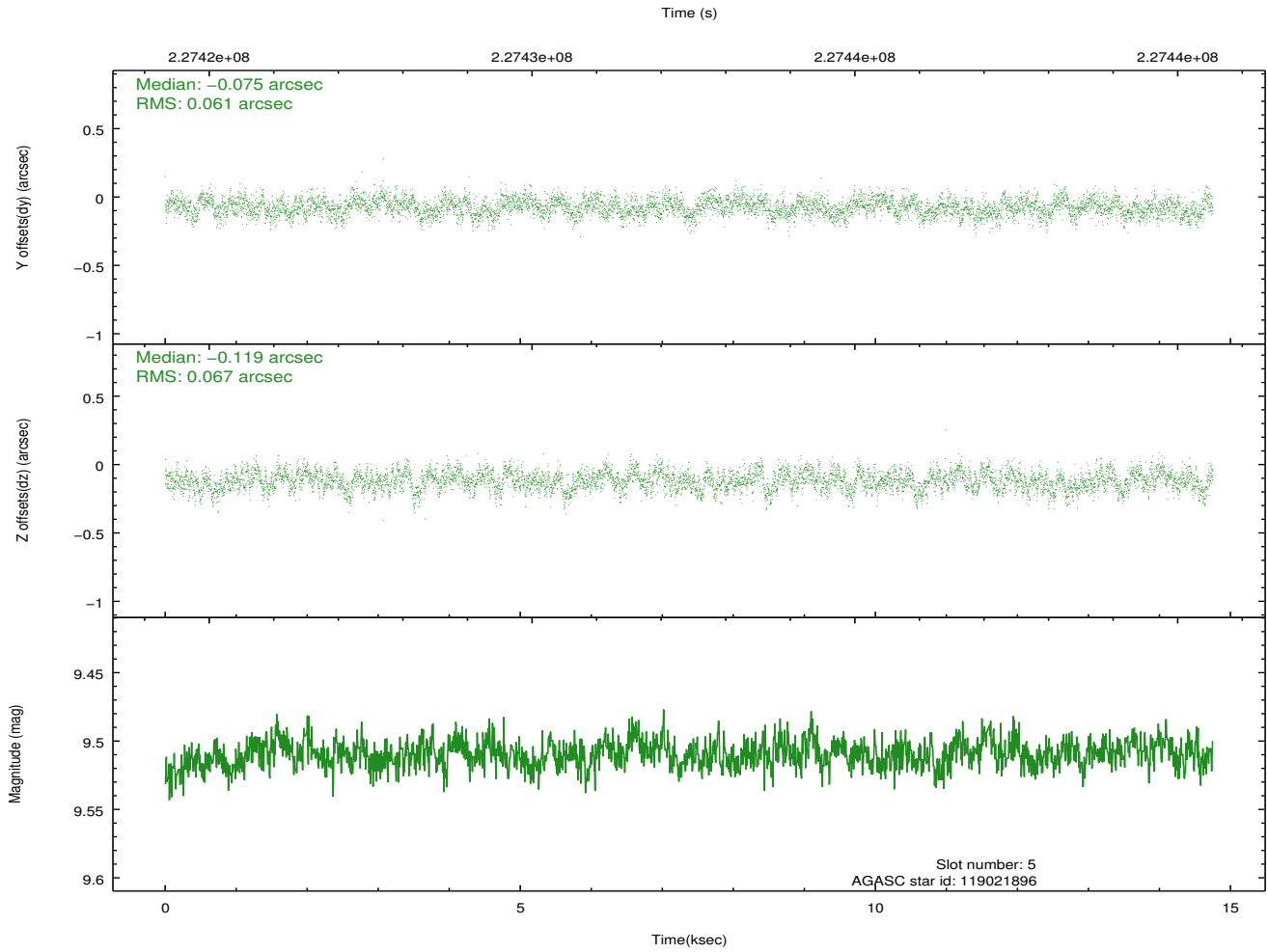
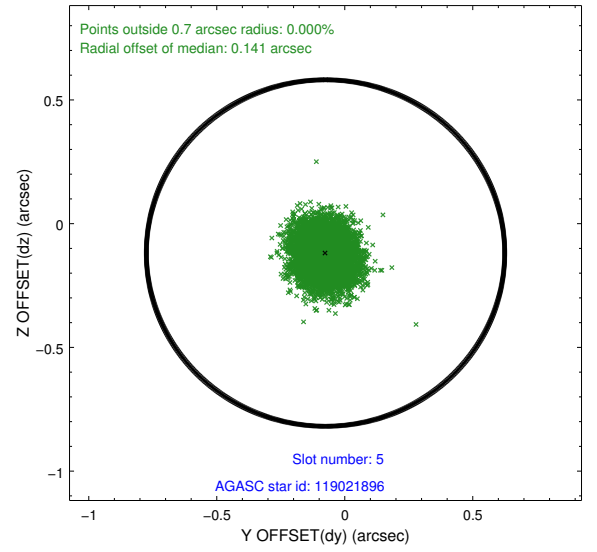
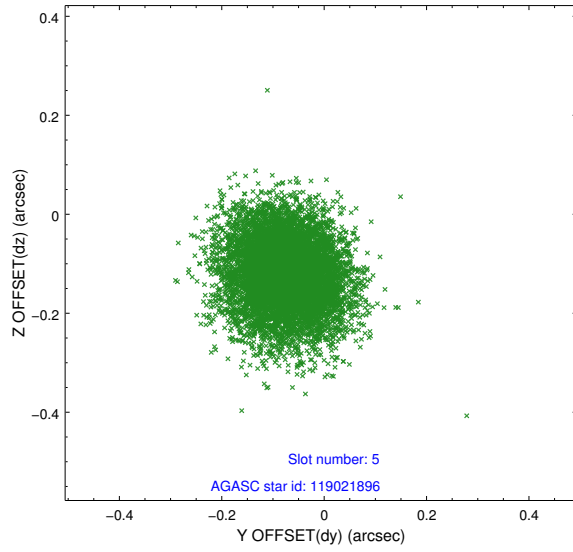
2.4.1 Slot 3



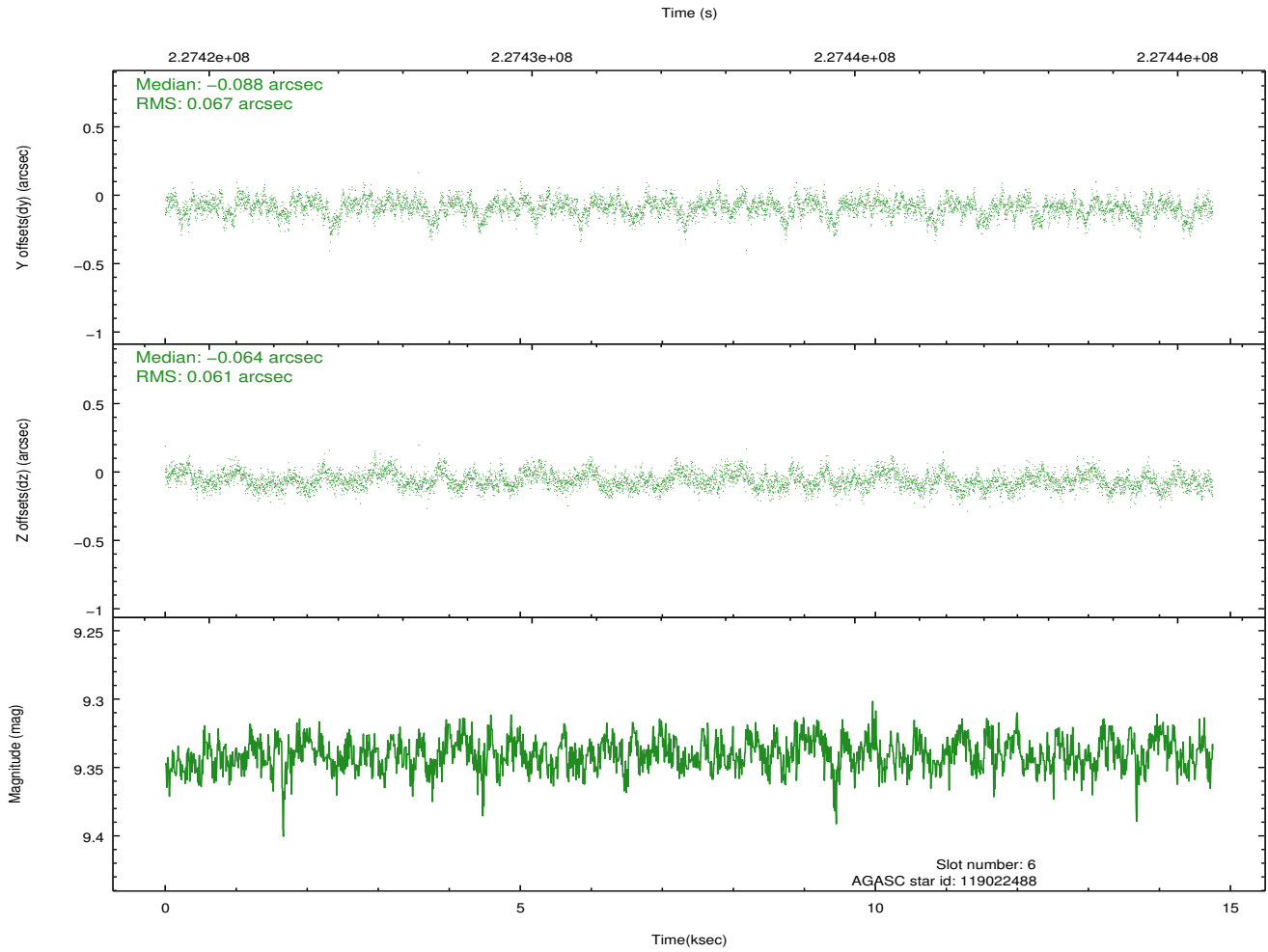
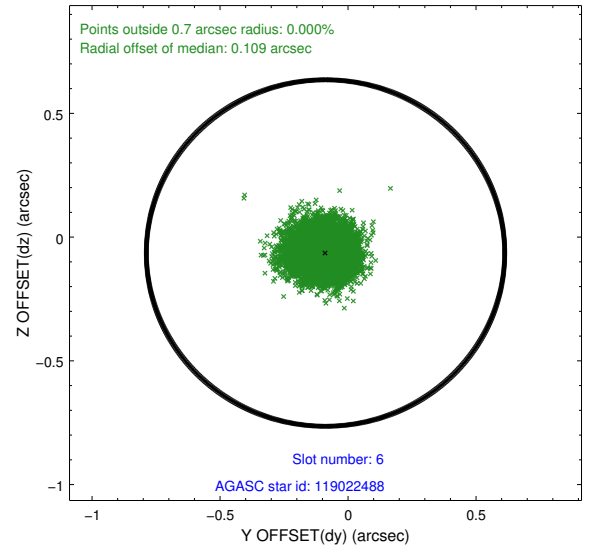
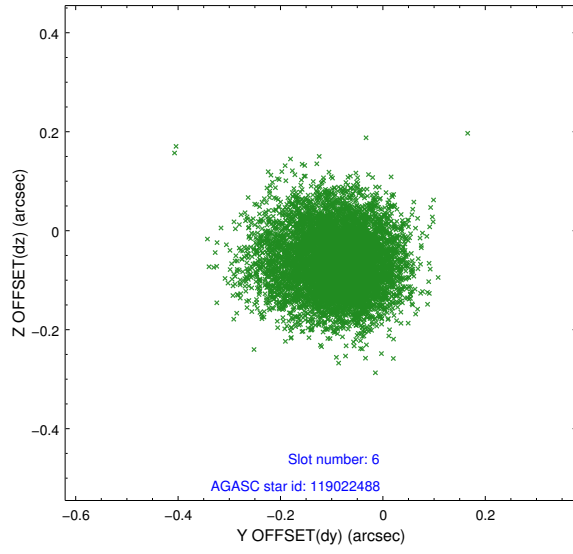
2.4.2 Slot 4



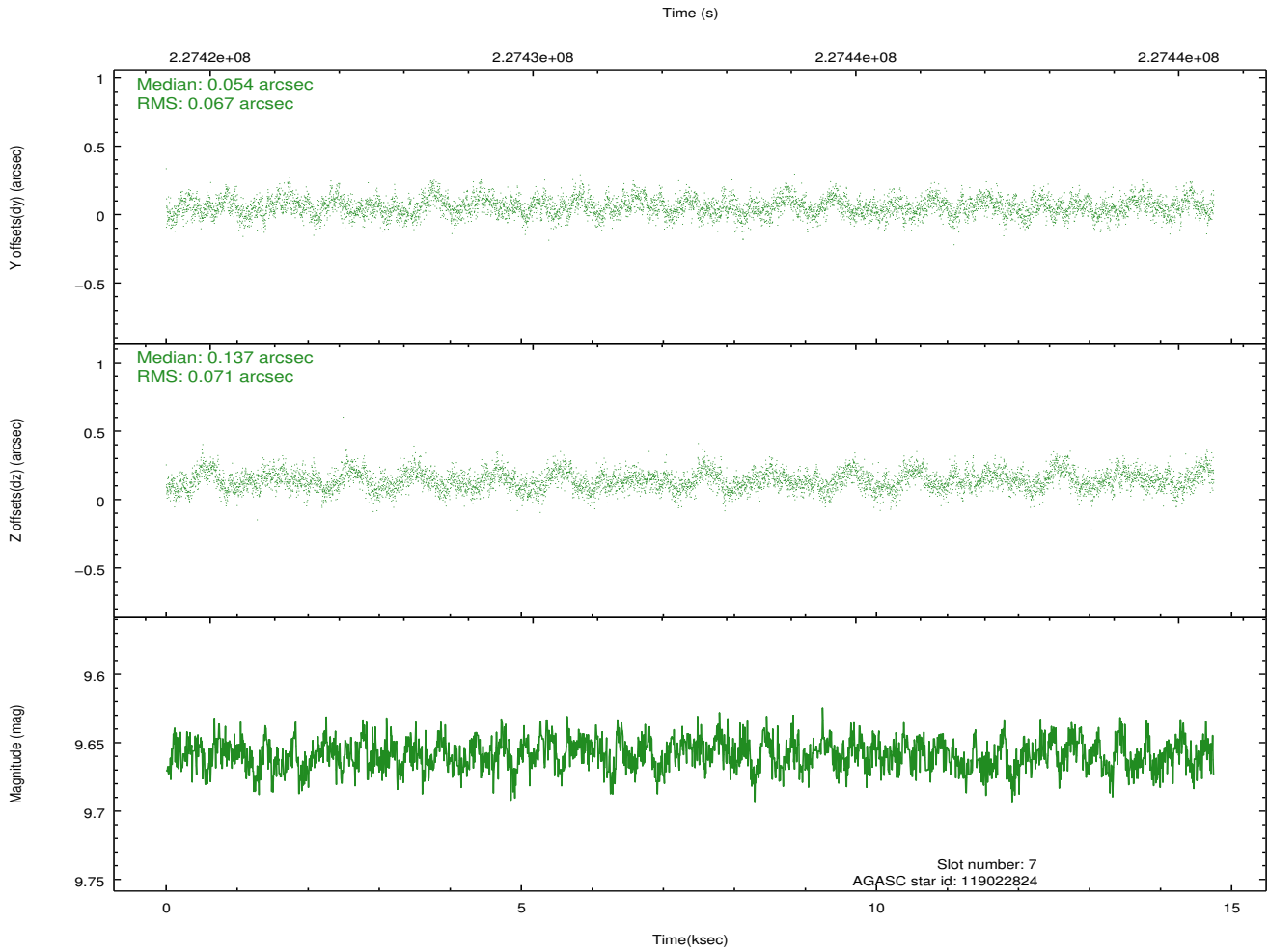
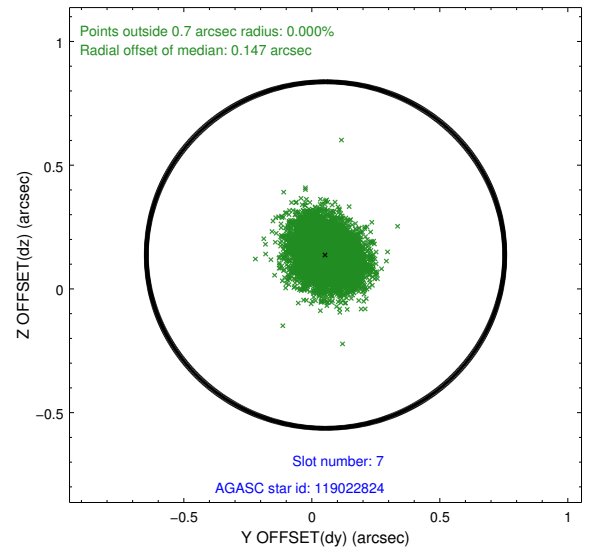
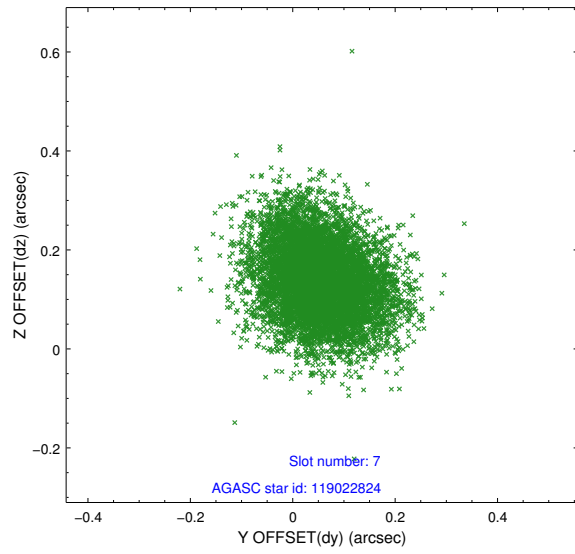
2.4.3 Slot 5



2.4.4 Slot 6

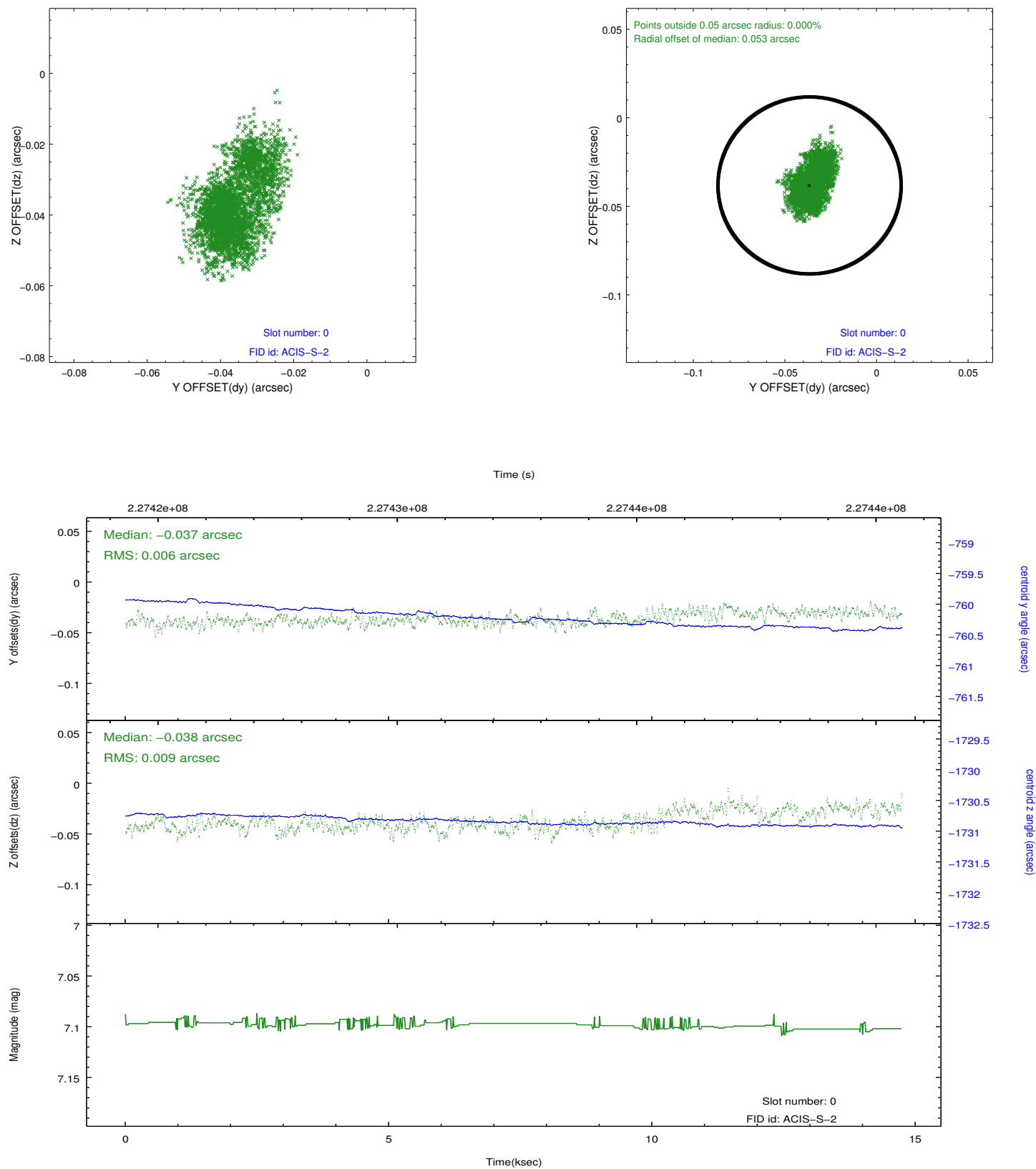


2.4.5 Slot 7

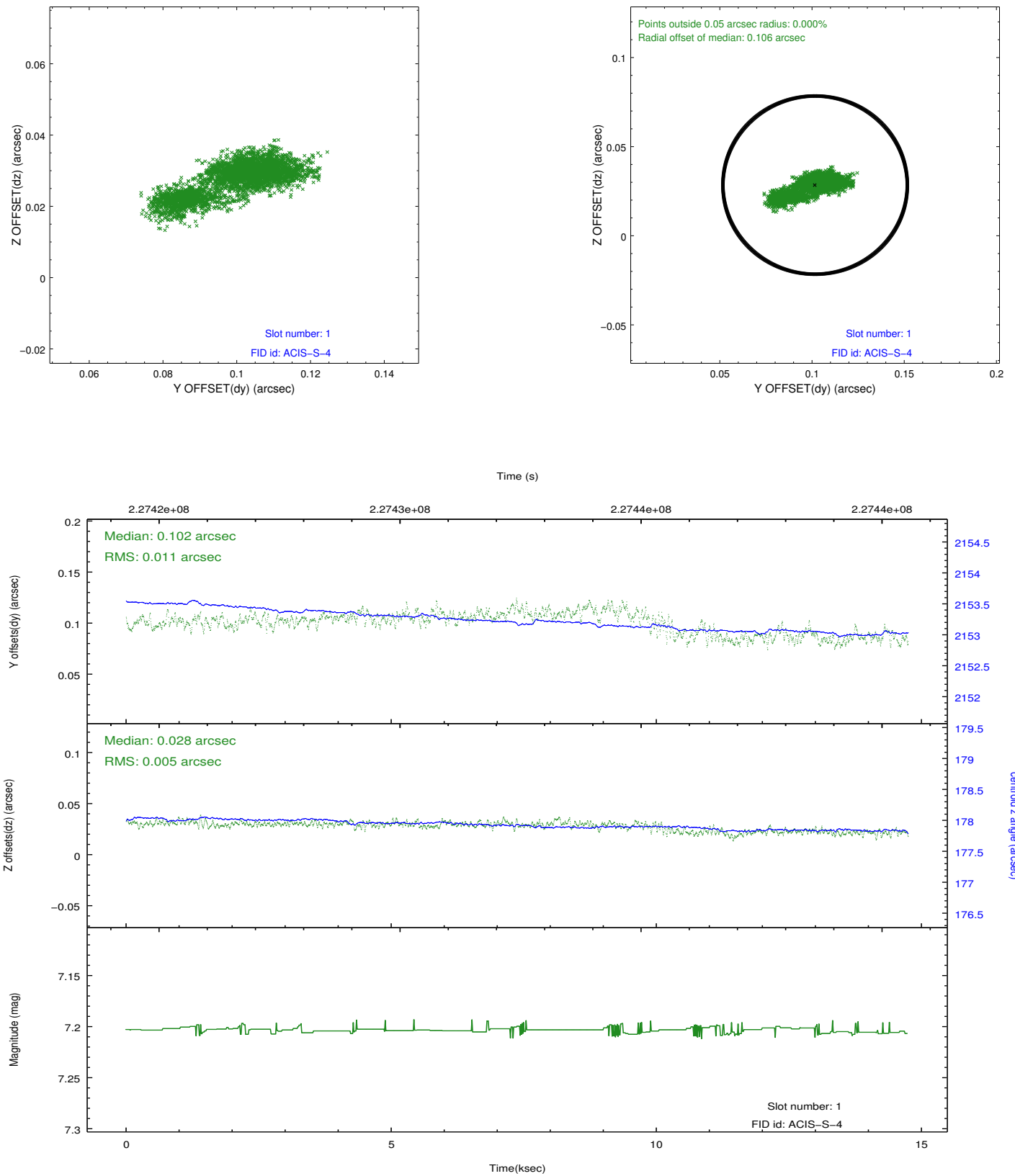


2.5 FID Slots

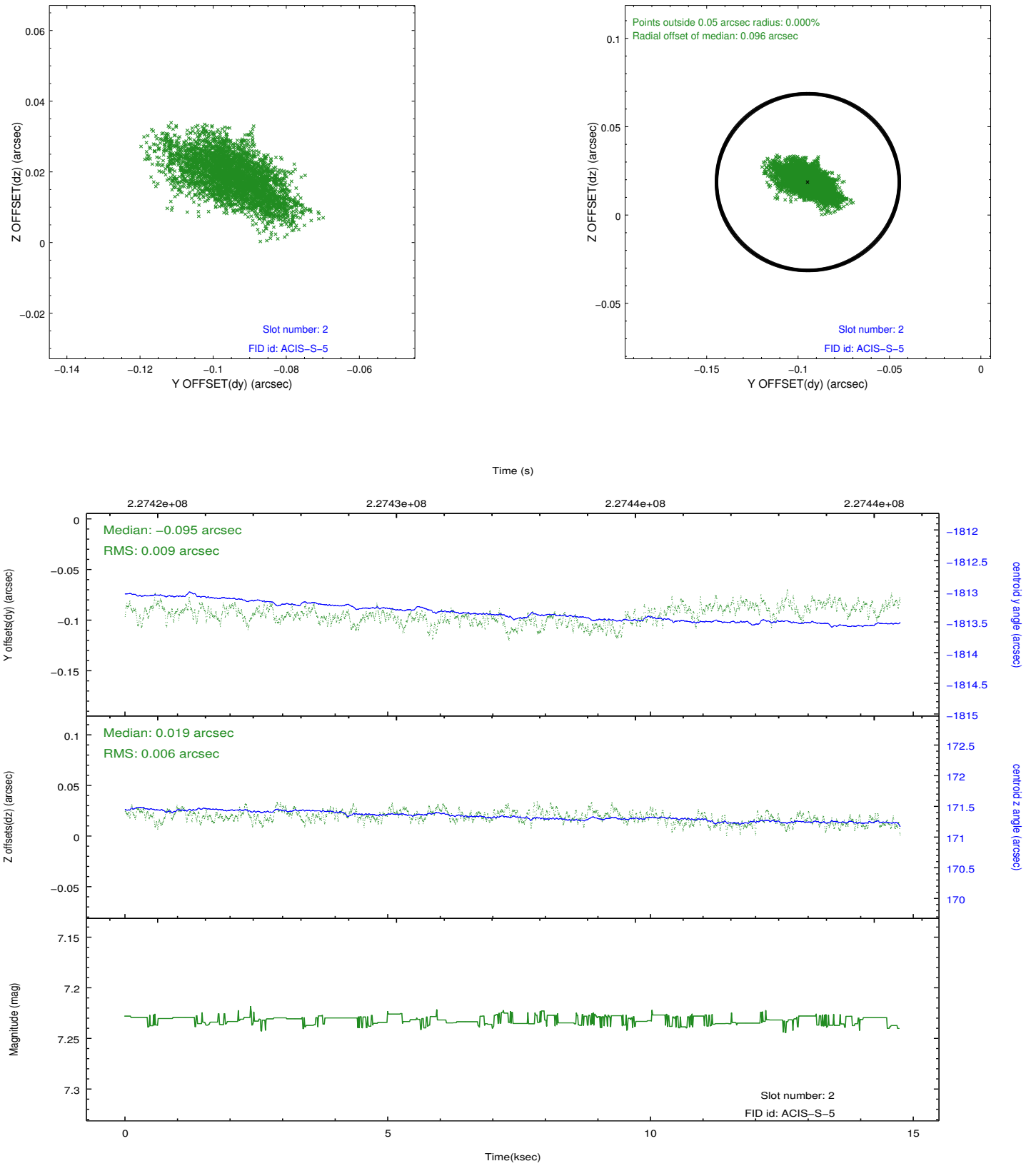
2.5.1 Slot 0



2.5.2 Slot 1



2.5.3 Slot 2



A Summary

A.1 Status

V&V Scientist	Jen Lauer
V&V Date (YYYY-MM-DD)	2013.01.14
V&V Edition	1
V&V Disposition and Status	OK
V&V Charge Time	14.45759

A.2 Comments