

V&V Reference Report

L2 ASCDS Version : 8.4.3

Observation 55751 - L2 Version 2
Chandra X-Ray Center

L2 Processing Date : Feb 1 2012

Contents

1	Front	2
2	OBI	3
2.1	OBI	3
2.1.1	Images	3
2.1.2	Bias	3
2.1.3	Parameters	4
2.1.4	Events	4
2.2	Compared Parameters	5
2.3	Star Slots	6
2.4	FID Slots	6
A	Summary	7
A.1	Status	7
A.2	Comments	7

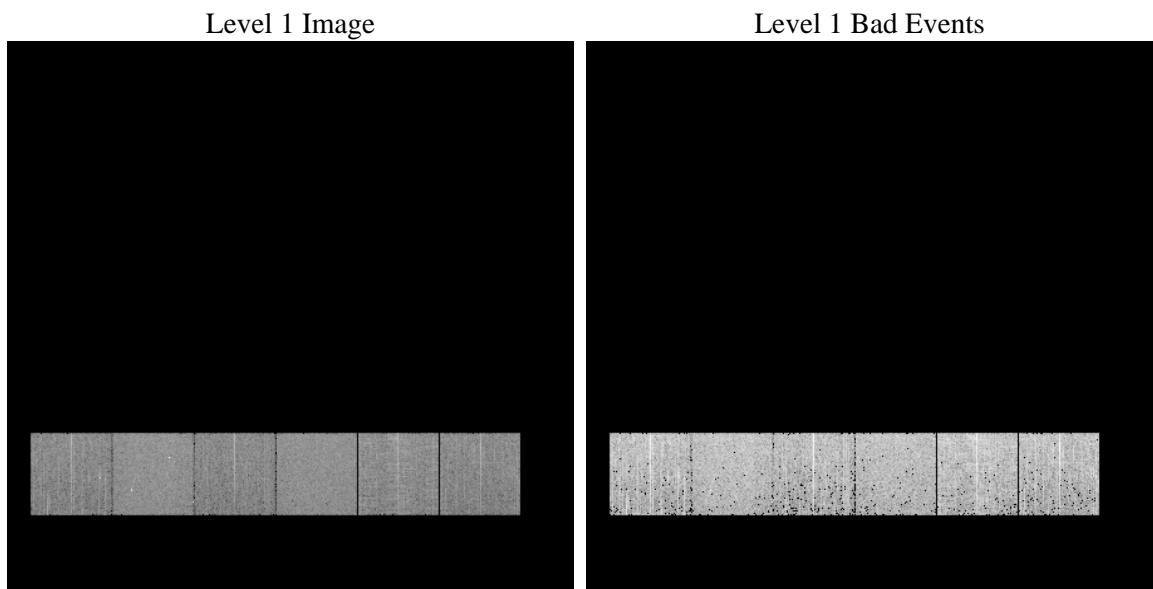
1 Front

seq_num	 	Sequence number
obs_id	55751	Observation id
title	ACIS-456789 diagnostics	Proposal title
observer	CHANDRA engineering request/realtime commanding	Principal investig
object	 	Source name
dtcycle	0	
cycle	P	events from which exps? Prim/Second/Both
ra_targ	0.0	Observer's specified target RA [deg]
dec_targ	0.0	Observer's specified target Dec [deg]
ra_nom	277.01330974159	Nominal RA [deg]
dec_nom	29.022934386814	Nominal Dec [deg]
roll_nom	12.985266209425	Nominal Roll [deg]
revision	2	Processing version of data
ontime	3276.7999878526	Sum of GTIs [s]
livetime	3235.3071733543	Livetime [s]
ontime4	3276.7999878526	Sum of GTIs [s]
ontime5	3276.7999878526	Sum of GTIs [s]
ontime6	3276.7999878526	Sum of GTIs [s]
ontime7	3276.7999878526	Sum of GTIs [s]
ontime8	3276.7999878526	Sum of GTIs [s]
ontime9	3276.7999878526	Sum of GTIs [s]
l2events	150071	Number of level 2 events

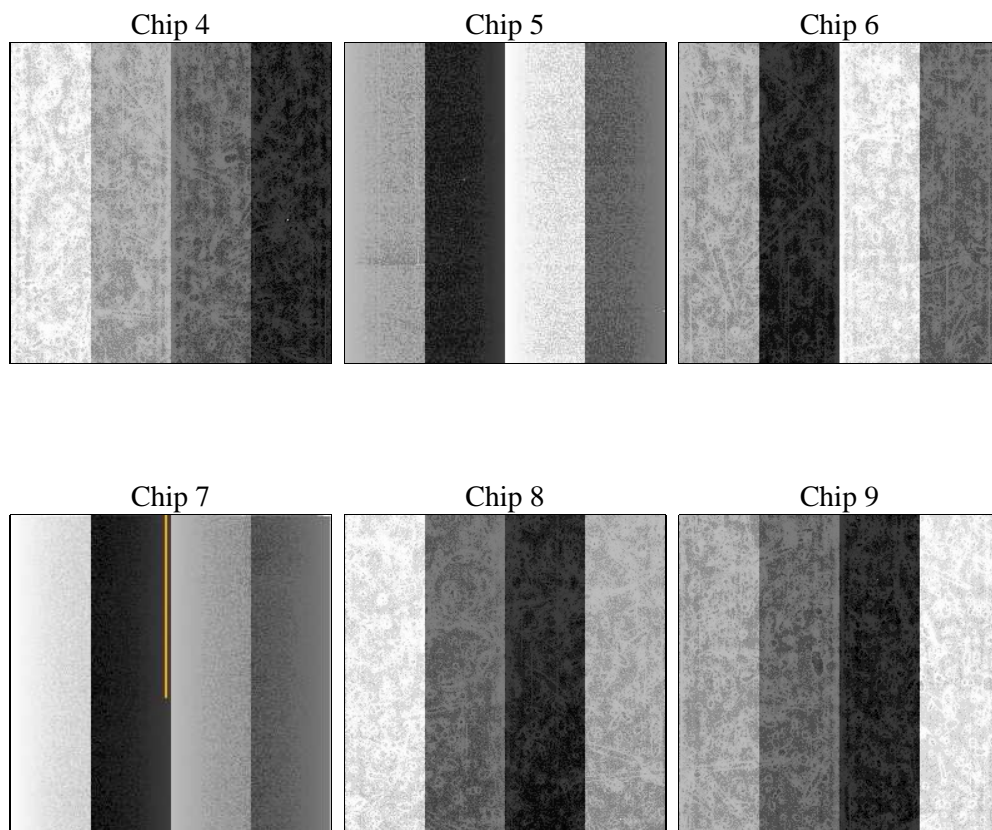
2 OBI

2.1 OBI

2.1.1 Images



2.1.2 Bias



2.1.3 Parameters

obi_num	0	Obi number	sched_exp_time	0.0	[s] Scheduled observation exposure time
ascdsver	8.4.3	Processing system revision	ontime	3276.7999878526	Sum of GTIs [s]
caldsver	4.4.7	 	ontime4	3276.7999878526	Sum of GTIs [s]
date	2012-02-01T10:52:13	Date and time of file creation	ontime5	3276.7999878526	Sum of GTIs [s]
revision	2	Processing version of data	ontime6	3276.7999878526	Sum of GTIs [s]
			ontime7	3276.7999878526	Sum of GTIs [s]
			ontime8	3276.7999878526	Sum of GTIs [s]
			ontime9	3276.7999878526	Sum of GTIs [s]
			l1events	326838	Number of level 1 events

2.1.4 Events

	ccd 4	ccd 5	ccd 6	ccd 7	ccd 8	ccd 9		ccd 4	ccd 5	ccd 6	ccd 7	ccd 8	ccd 9
level 1 events	49485	63559	47239	60707	57585	48263	grade 0 events	12108	5548	11813	5897	12891	11373
rejected events	27995	26687	24709	25570	30455	26618		24%	8%	25%	9%	22%	23%
rejected %	56%	41%	52%	42%	52%	55%	grade 1 events	124	101	64	69	61	81
								0%	0%	0%	0%	0%	0%
							grade 2 events	3504	12697	4068	7715	5340	3858
								7%	19%	8%	12%	9%	7%
							grade 3 events	1529	1632	1483	3201	1980	1501
								3%	2%	3%	5%	3%	3%
							grade 4 events	1513	1476	1467	3104	1954	1438
								3%	2%	3%	5%	3%	2%
							grade 5 events	1560	3449	1649	3970	2181	1784
								3%	5%	3%	6%	3%	3%
							grade 6 events	2865	15559	3729	15269	5036	3488
								5%	24%	7%	25%	8%	7%
							grade 7 events	26282	23097	22966	21482	28142	24740
								53%	36%	48%	35%	48%	51%

2.2 Compared Parameters

Parameter	Planned	Actual	Parameter	Planned	Actual
Instrument	ACIS	ACIS	Obspar format version number	7	7
Detector	ACIS-456789	ACIS-456789	Obspar file type	PREDICTED	ACTUAL
Grating	NONE	NONE	Obspar update status	NONE	UPDATED
Data mode	FAINT	FAINT	Number of optional ACIS chips dropped	0	0
Observation mode	SECONDARY	SECONDARY	On-chip summing requested	N	N
[deg] Pointing RA	0	277.0133097415854	Subarray requested	NONE	NONE
[deg] Pointing Dec	0	29.02293438681363	Alternating exposures requested	N	N
[deg] Pointing Roll	0.0	12.98526620942528	[s] Primary exposure time	3.2	3.2
[mm] SIM focus pos	-1.429586	-1.428180813131781			
[mm] SIM defocus	0.1037507710433287	0.1051558262725154			
[mm] SIM translation stage pos	250.455976	250.466033080201			
[mm] SIM translation stage offset	0	-0.01005468664627074			
[s] Observation start time (MET)	410785773.288928	410785772.26393			
Observation start date	2011-01-07T11:09:33	2011-01-07T11:09:32			
[s] Observation end time (MET)	410803686.189853	410803685.16486			
Observation end date	2011-01-07T16:08:06	2011-01-07T16:08:05			
Read mode	TIMED	TIMED			

2.3 Star Slots

2.4 FID Slots

A Summary

A.1 Status

V&V Scientist	Beth Sundheim
V&V Date (YYYY-MM-DD)	2012.02.01
V&V Edition	1
V&V Disposition and Status	OK
V&V Charge Time	3.2767999878526

A.2 Comments