

V&V Reference Report

L2 ASCDS Version : 8.4.5

Observation 13601 - L2 Version 1
Chandra X-Ray Center

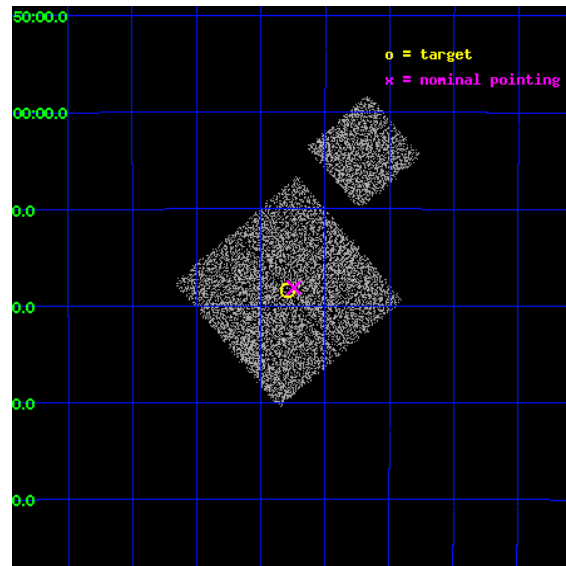
L2 Processing Date : Aug 30 2012

Contents

1	Front	2
2	OBI	3
2.1	OBI	3
2.1.1	Images	3
2.1.2	Bias	3
2.1.3	Parameters	4
2.1.4	Events	4
2.2	Compared Parameters	5
2.3	Aspect	6
2.4	Star Slots	9
2.4.1	Slot 3	9
2.4.2	Slot 4	10
2.4.3	Slot 5	11
2.4.4	Slot 6	12
2.4.5	Slot 7	13
2.5	FID Slots	14
2.5.1	Slot 0	14
2.5.2	Slot 1	15
2.5.3	Slot 2	16
A	Summary	17
A.1	Status	17
A.2	Comments	17

1 Front

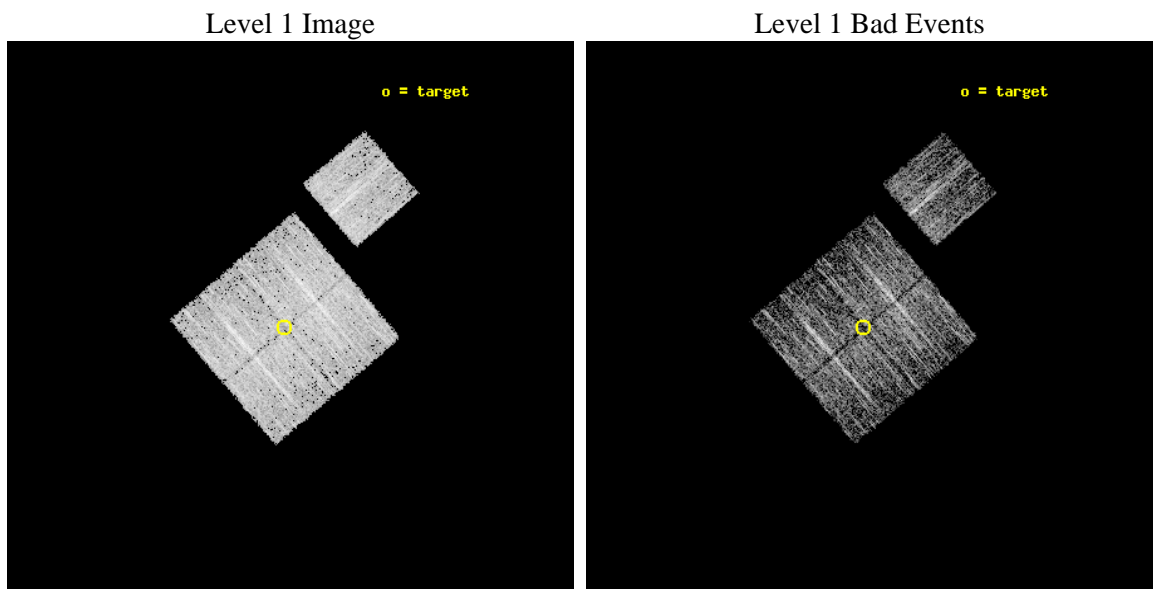
seq_num	801162	Sequence number
obs_id	13601	Observation id
title	To The Outer Limits of Clusters with Chandra and Suzaku	Proposal t
observer	Dr. Eric Miller	Principal investigator
object	A2667	Source name
dtcycle	0	
cycle	P	events from which exps? Prim/Second/Both
ra_targ	357.82205	Observer's specified target RA [deg]
dec_targ	-26.307405	Observer's specified target Dec [deg]
ra_nom	357.81090582692	Nominal RA [deg]
dec_nom	-26.302453978475	Nominal Dec [deg]
roll_nom	49.337024332298	Nominal Roll [deg]
revision	1	Processing version of data
ontime	5076.9464350343	Sum of GTIs [s]
livetime	5010.612392267	Livetime [s]
ontime0	5083.1874654293	Sum of GTIs [s]
ontime1	5076.9464350343	Sum of GTIs [s]
ontime2	5080.1285350323	Sum of GTIs [s]
ontime3	5083.3105854392	Sum of GTIs [s]
ontime6	5083.146425426	Sum of GTIs [s]
l2events	13556	Number of level 2 events



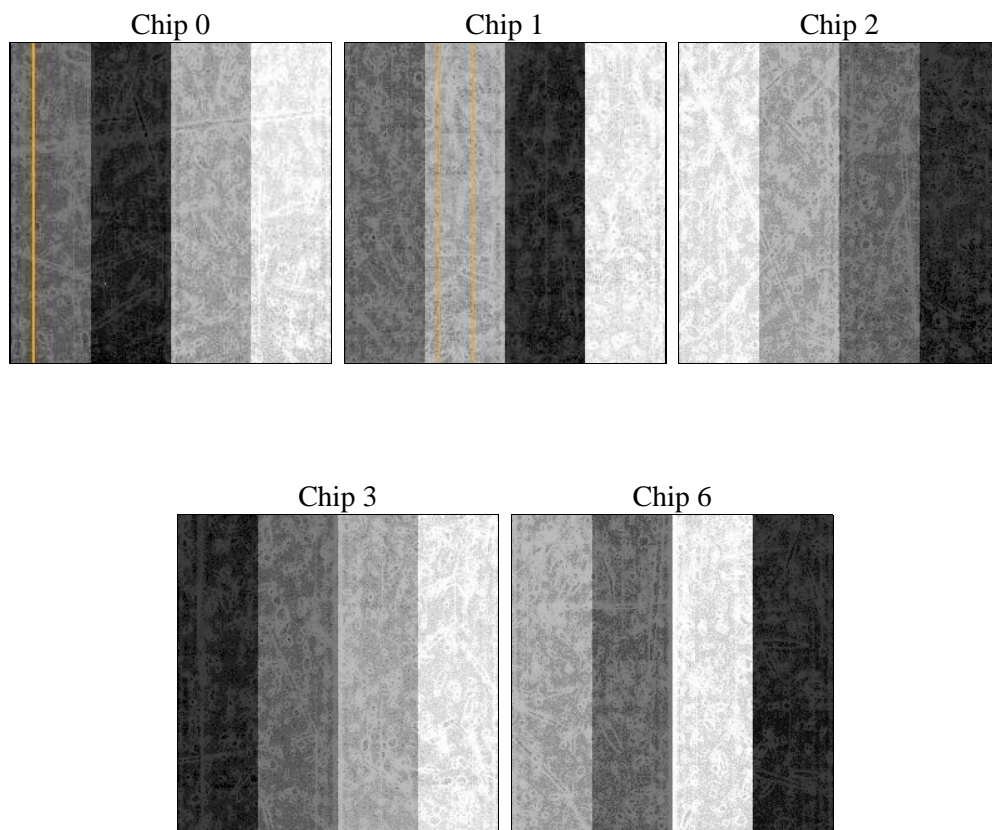
2 OBI

2.1 OBI

2.1.1 Images



2.1.2 Bias



2.1.3 Parameters

obi_num	0	Obi number	sched_exp_time	5000.000000	[s] Scheduled observation exposure time
ascdsver	8.4.5	Processing system revision	ontime	5076.9464350343	Sum of GTIs [s]
caldsver	4.5.1.1	 	ontime0	5083.1874654293	Sum of GTIs [s]
date	2012-08-30T18:24:17	Date and time of file creation	ontime1	5076.9464350343	Sum of GTIs [s]
revision	1	Processing version of data	ontime2	5080.1285350323	Sum of GTIs [s]
			ontime3	5083.3105854392	Sum of GTIs [s]
			ontime6	5083.146425426	Sum of GTIs [s]
			l1events	128692	Number of level 1 events

2.1.4 Events

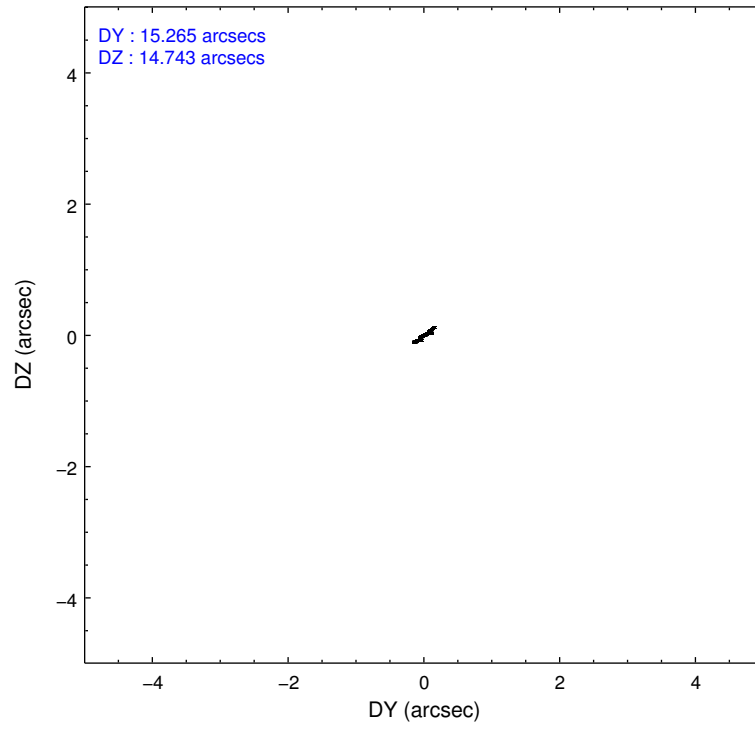
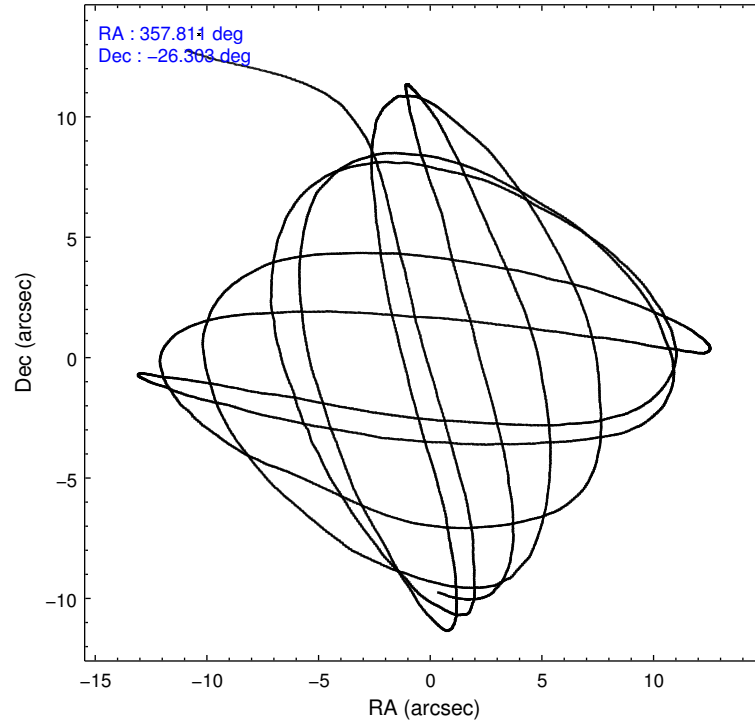
	ccd 0	ccd 1	ccd 2	ccd 3	ccd 6
level 1 events	24854	24604	26300	27336	25598
rejected events	21652	21099	23192	24322	22471
rejected %	87%	85%	88%	88%	87%

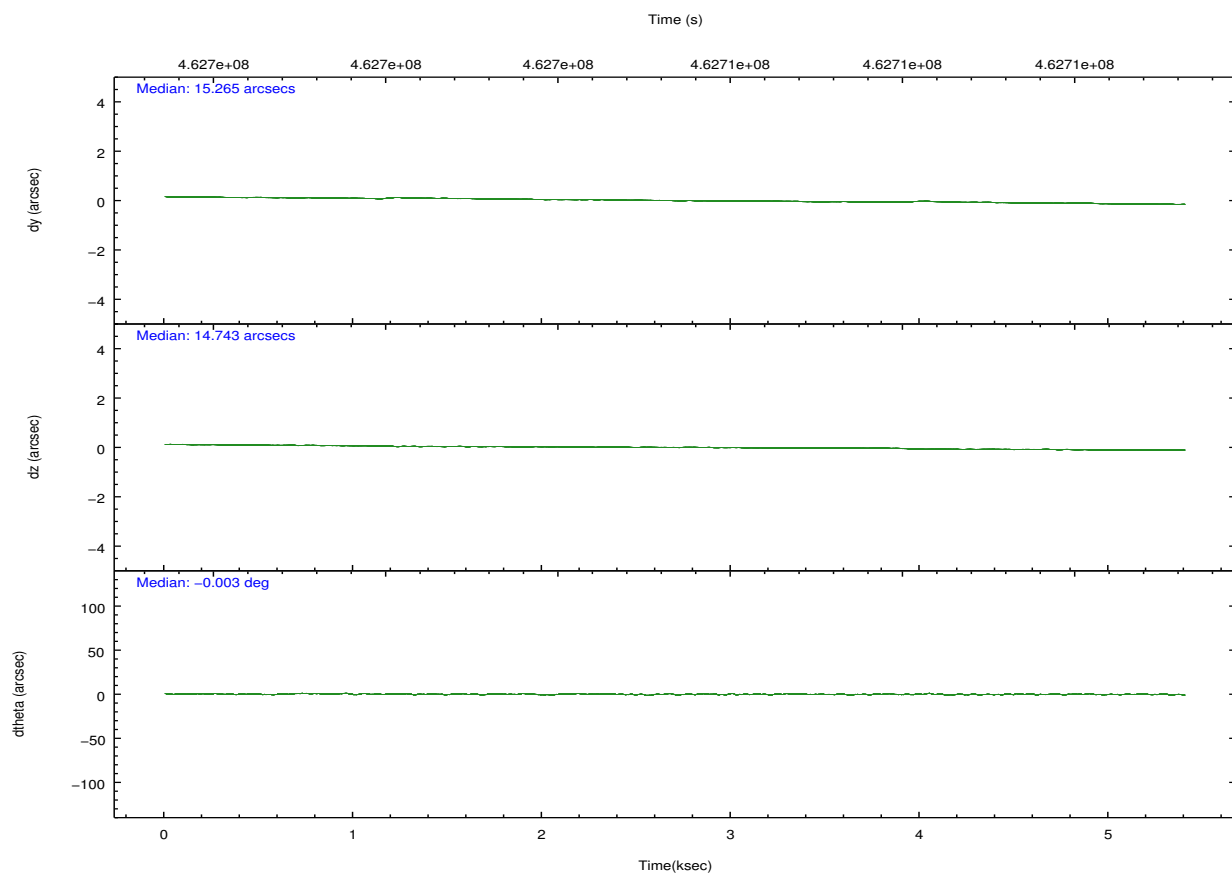
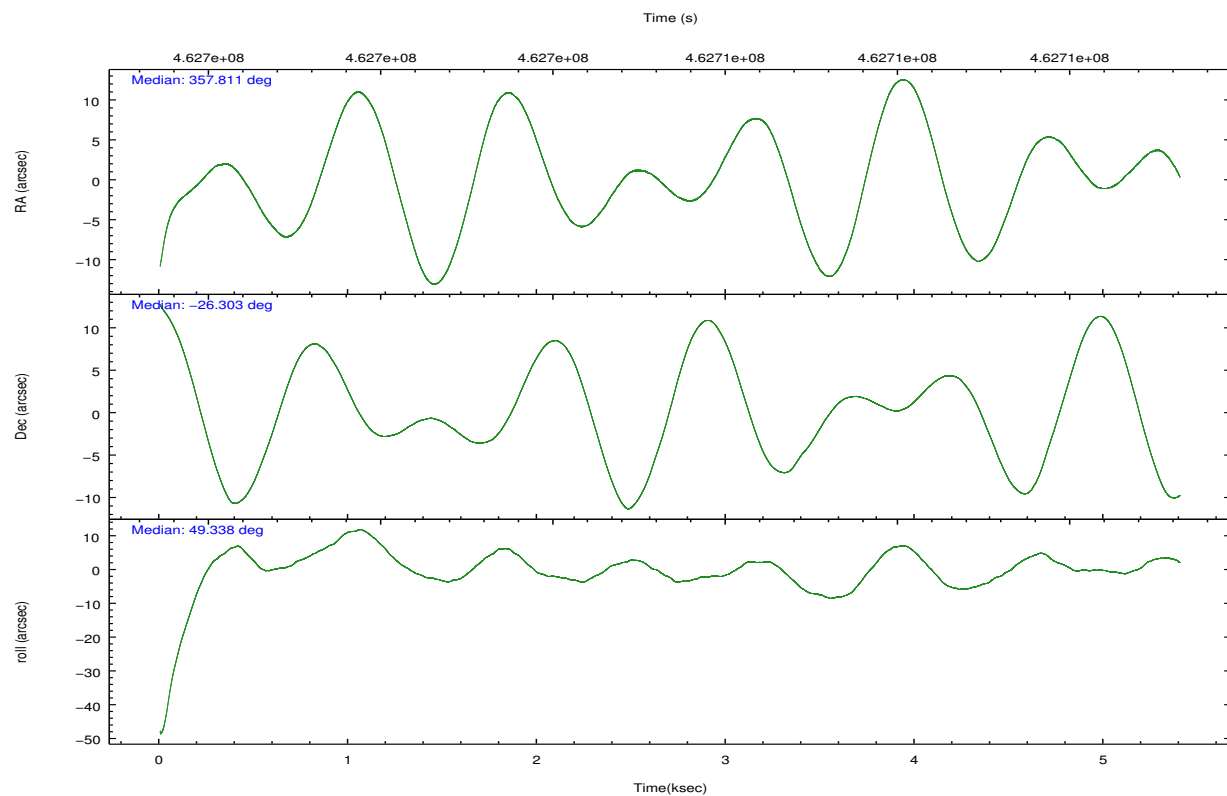
	ccd 0	ccd 1	ccd 2	ccd 3	ccd 6
grade 0 events	1133	1232	1116	1119	1051
	4%	5%	4%	4%	4%
grade 1 events	26	17	13	18	9
	0%	0%	0%	0%	0%
grade 2 events	806	886	751	661	676
	3%	3%	2%	2%	2%
grade 3 events	352	328	338	335	338
	1%	1%	1%	1%	1%
grade 4 events	324	327	311	311	299
	1%	1%	1%	1%	1%
grade 5 events	1229	1277	1180	1392	1359
	4%	5%	4%	5%	5%
grade 6 events	591	736	596	597	768
	2%	2%	2%	2%	3%
grade 7 events	20393	19801	21995	22903	21098
	82%	80%	83%	83%	82%

2.2 Compared Parameters

Parameter	Planned	Actual	Parameter	Planned	Actual
Instrument	ACIS	ACIS	Obspar format version number	7	7
Detector	ACIS-01236	ACIS-01236	Obspar file type	PREDICTED	ACTUAL
Grating	NONE	NONE	Obspar update status	NONE	UPDATED
Data mode	VFAINT	VFAINT	CCD I0 on	Y	Y
Observation mode	POINTING	POINTING	CCD I1 on	Y	Y
[deg] Pointing RA	357.805380	357.8109058269227	CCD I2 on	Y	Y
[deg] Pointing Dec	-26.329519	-26.30245397847457	CCD I3 on	Y	Y
[deg] Pointing Roll	49.125937	49.33702433229787	CCD S0 on	N	N
[mm] SIM focus pos	-0.782348	-0.7809083437167272	CCD S1 on	N	N
[mm] SIM defocus	0	0.001439871863259334	CCD S2 on	O1	Y
[mm] SIM translation stage pos	-233.592463	-233.5874344608287	CCD S3 on	N	N
[mm] SIM translation stage offset	0	-0.005018542100998502	CCD S4 on	N	N
[s] Observation start time (MET)	462703385.184000	462702336.51735	CCD S5 on	N	N
Observation start date	2012-08-30T08:41:58	2012-08-30T08:25:36	Number of optional ACIS chips dropped	0	0
[s] Observation end time (MET)	462708385.184000	462709093.83021	On-chip summing requested	N	N
Observation end date	2012-08-30T10:05:18	2012-08-30T10:18:13	Subarray requested	NONE	NONE
Read mode	TIMED	TIMED	Alternating exposures requested	N	N
			[s] Primary exposure time	0.000000	3.1

2.3 Aspect



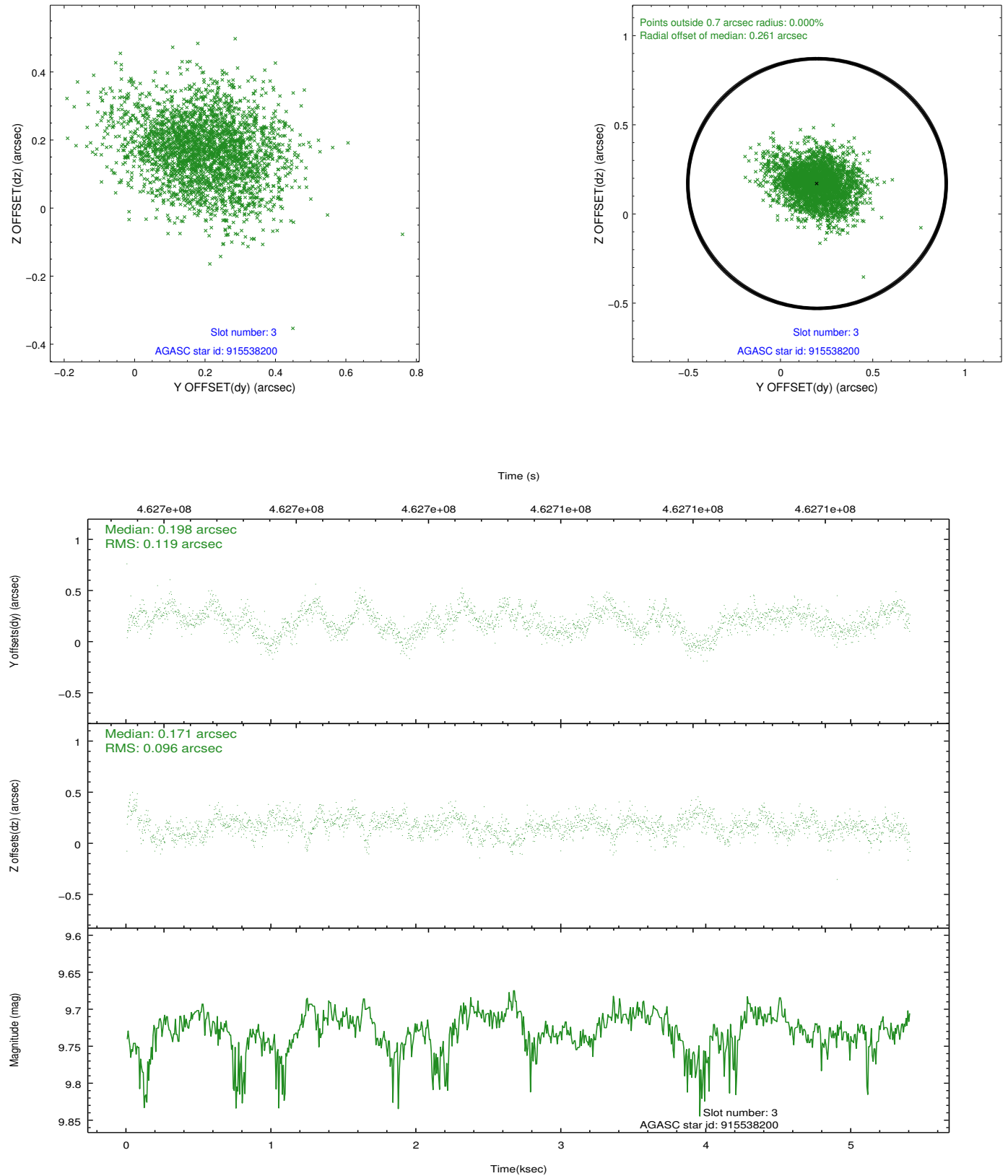


Slot Statistics

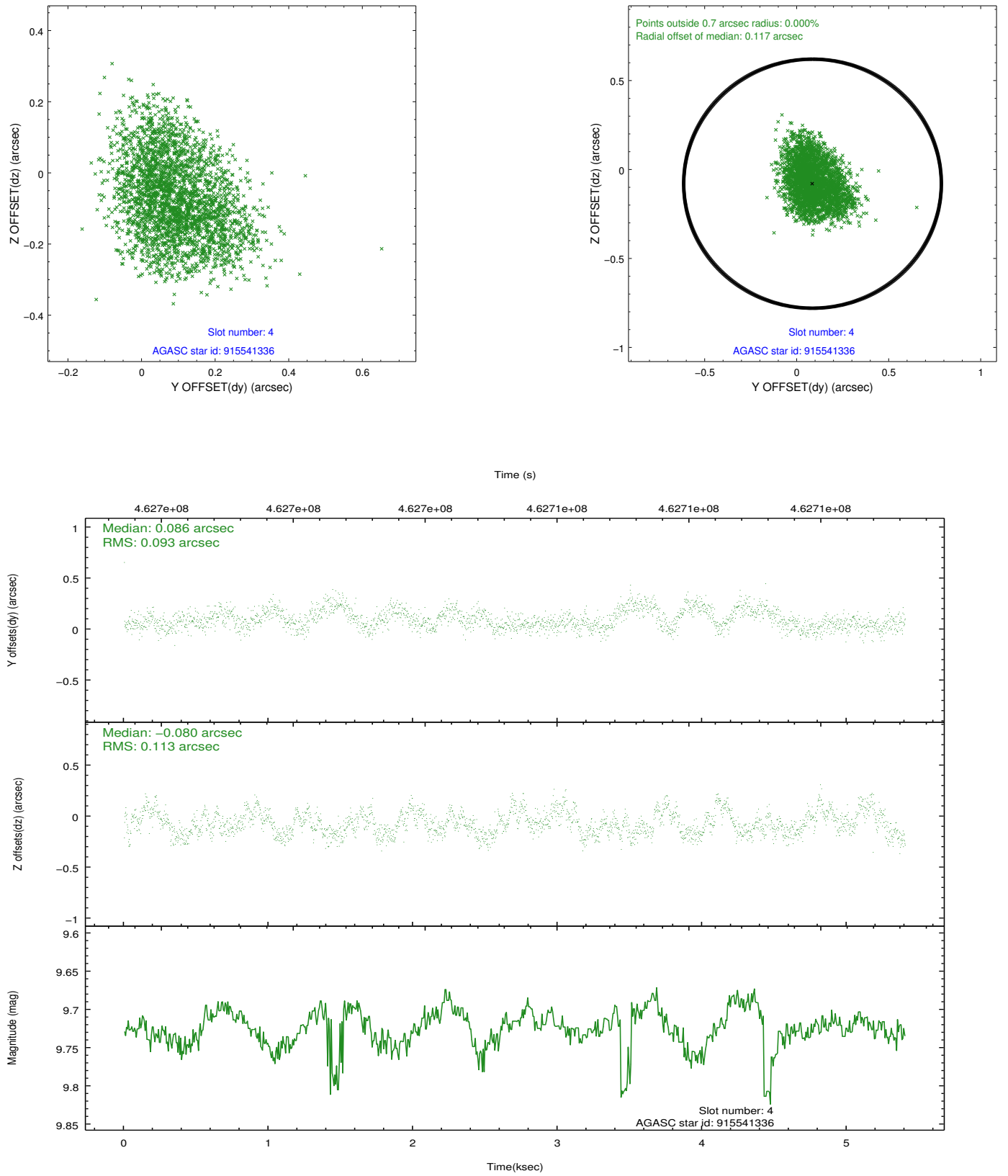
slot	status	id	mag	n_pts	med_dy	med_dz	dr1	dr2	ra	dec	mean_y	mean_z
0	FID	ACIS-I-1	7.11	1318	0.044	-0.011	0.007	0.011	0.000000	0.000000	924.24	-838.33
1	FID	ACIS-I-5	7.10	1318	-0.252	0.037	0.006	0.010	0.000000	0.000000	-1823.58	1058.61
2	FID	ACIS-I-6	7.10	1318	0.116	0.044	0.007	0.011	0.000000	0.000000	388.60	1704.41
3	GUIDE	915538200	9.73	2628	0.198	0.171	0.161	0.267	357.458497	-26.842105	-2125.42	-366.79
4	GUIDE	915541336	9.72	2629	0.086	-0.080	0.159	0.244	357.582055	-26.642452	-1321.83	-195.14
5	GUIDE	915543864	10.05	2627	-0.204	-0.116	0.166	0.274	357.439253	-25.791763	685.45	2163.09
6	GUIDE	915546416	9.87	2604	-0.154	-0.260	0.155	0.248	357.544948	-25.638088	1328.60	2267.65
7	GUIDE	915538560	9.56	2634	0.075	0.273	0.161	0.252	358.087958	-27.059383	-1393.33	-2403.98

2.4 Star Slots

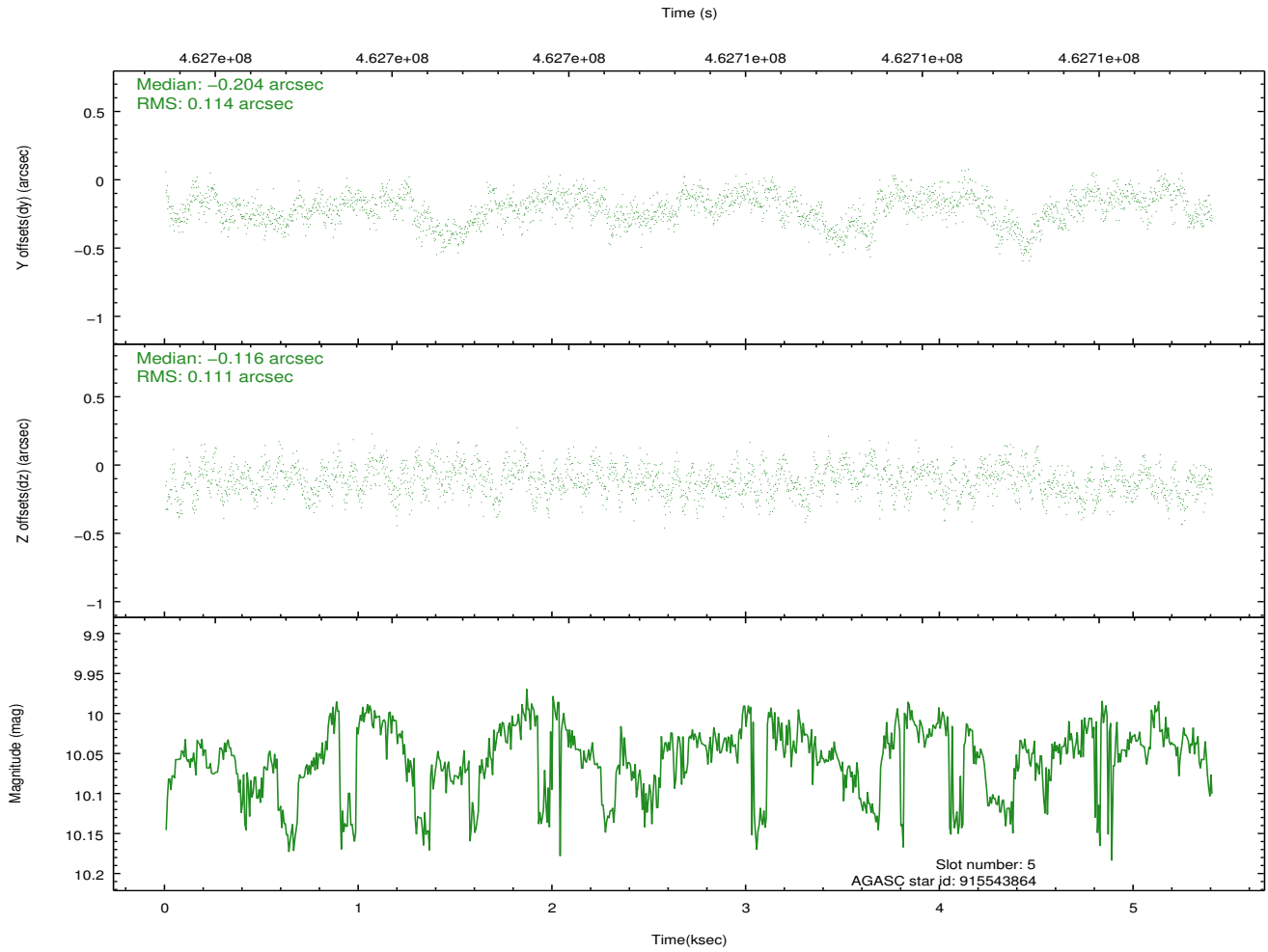
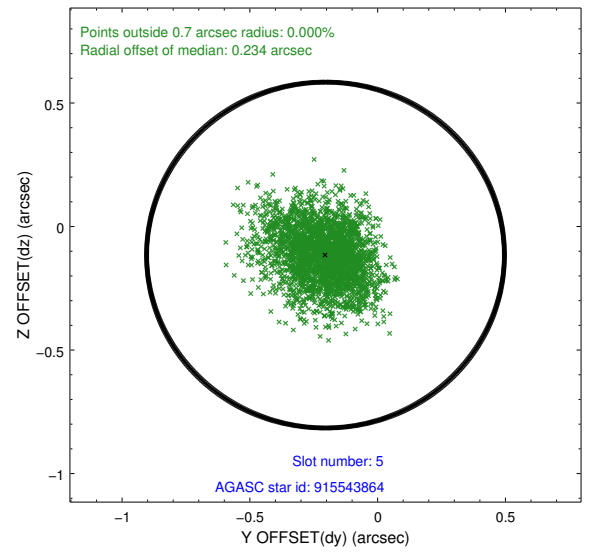
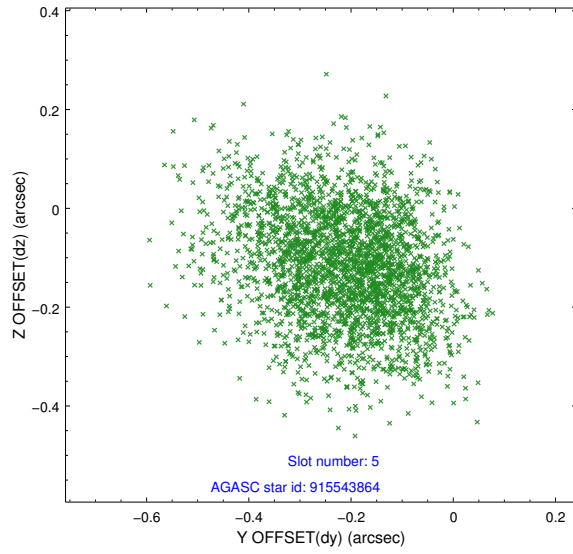
2.4.1 Slot 3



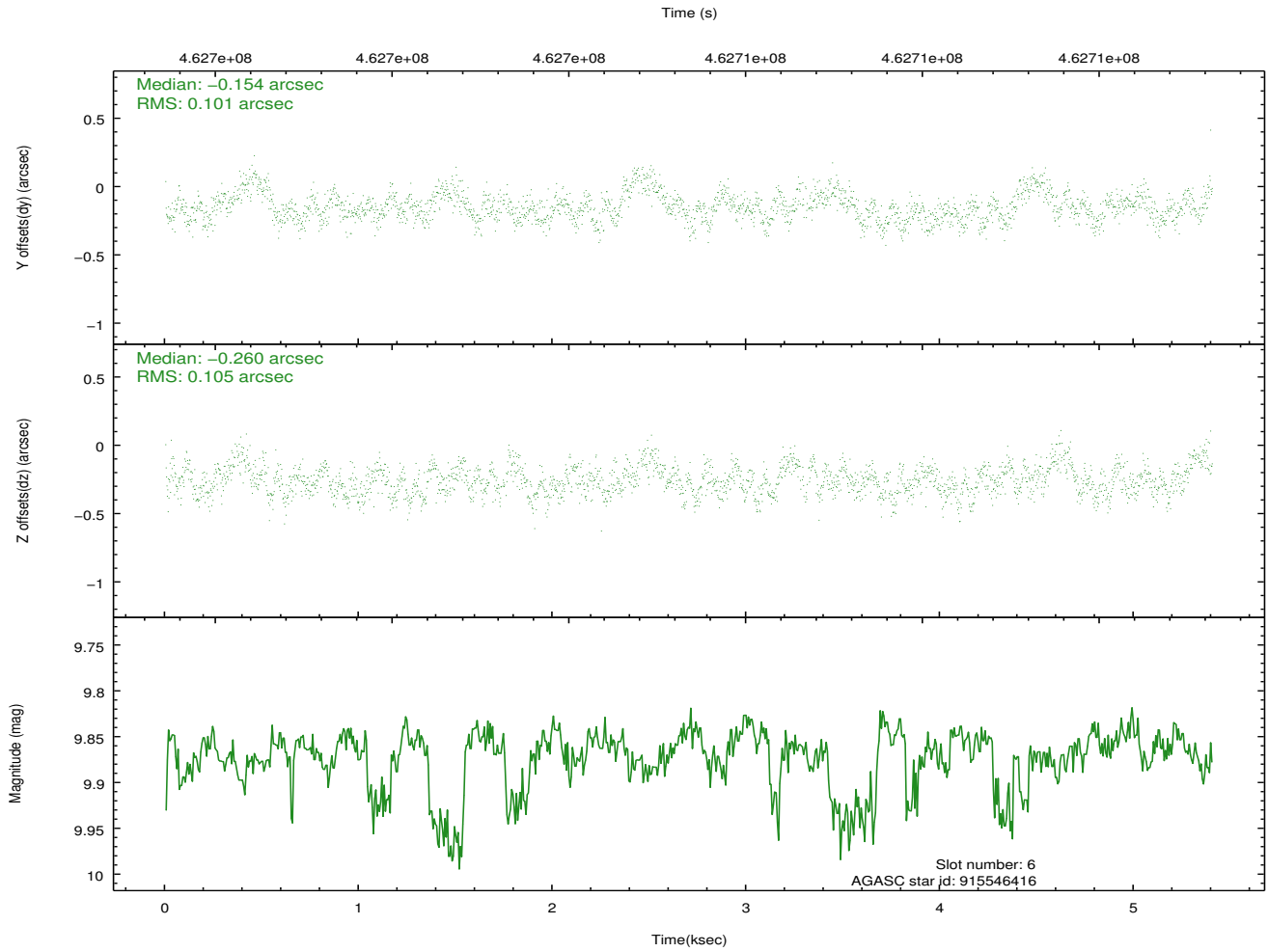
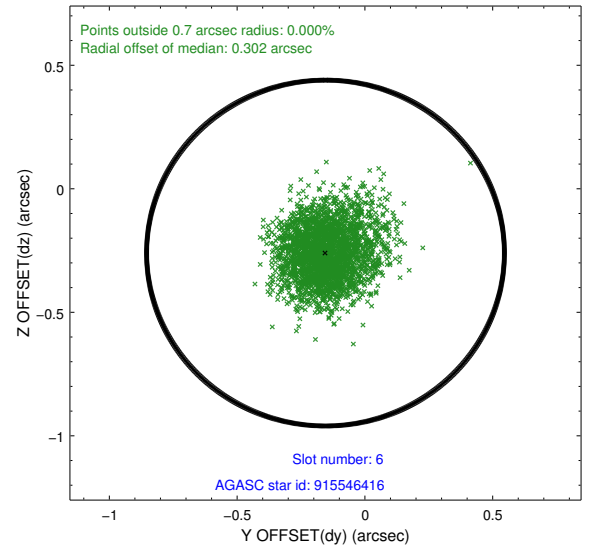
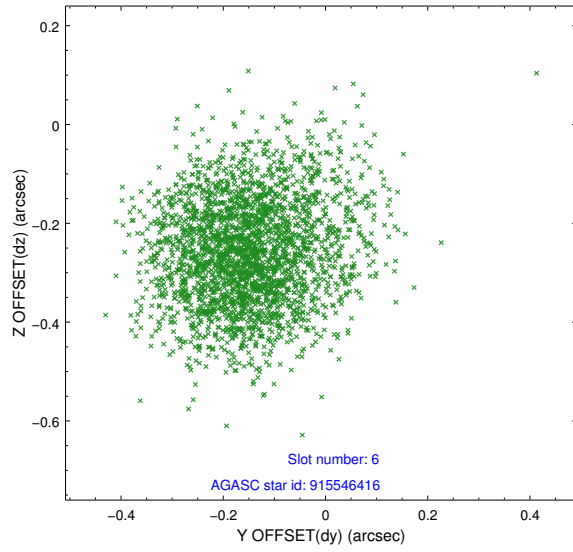
2.4.2 Slot 4



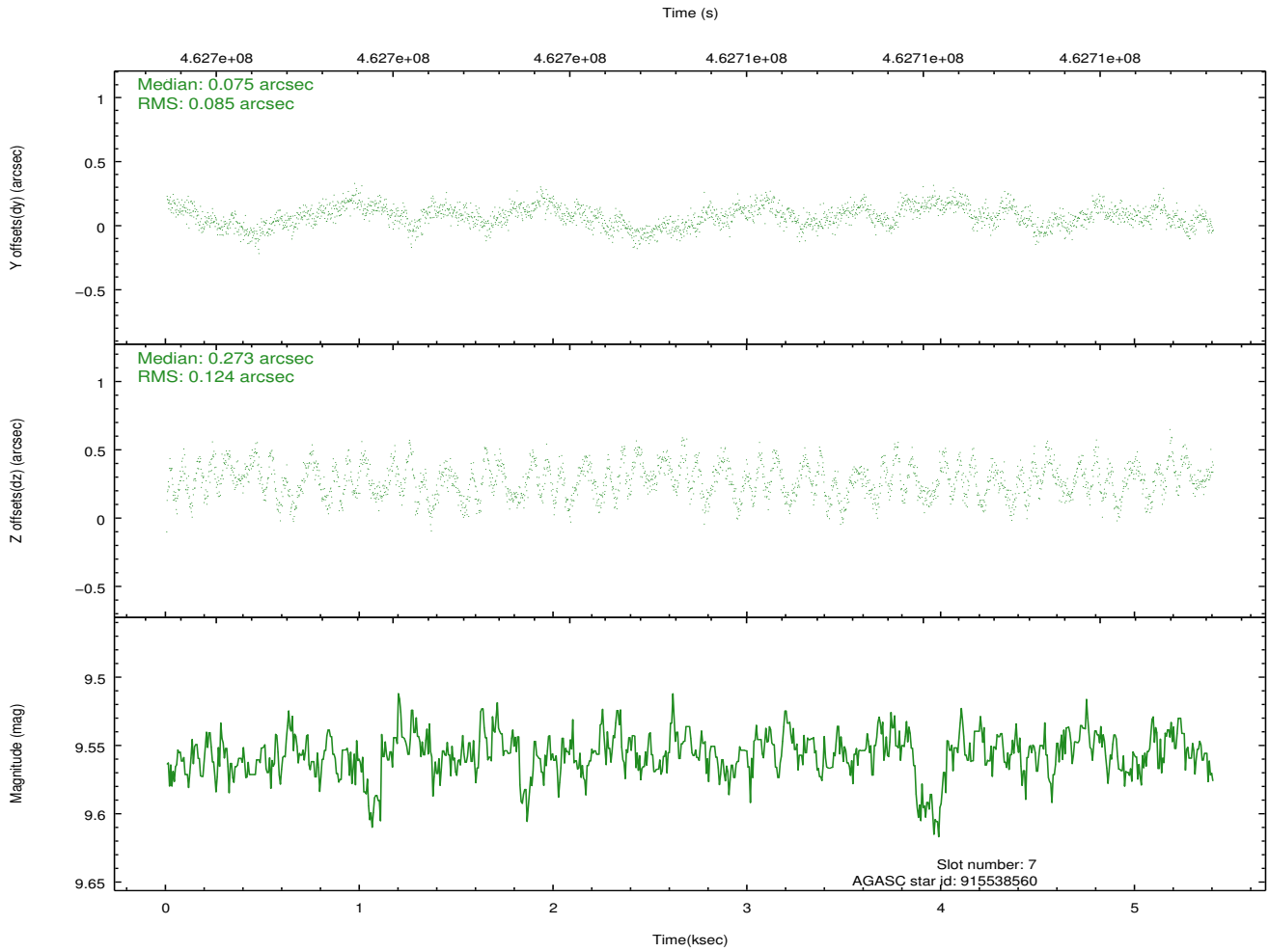
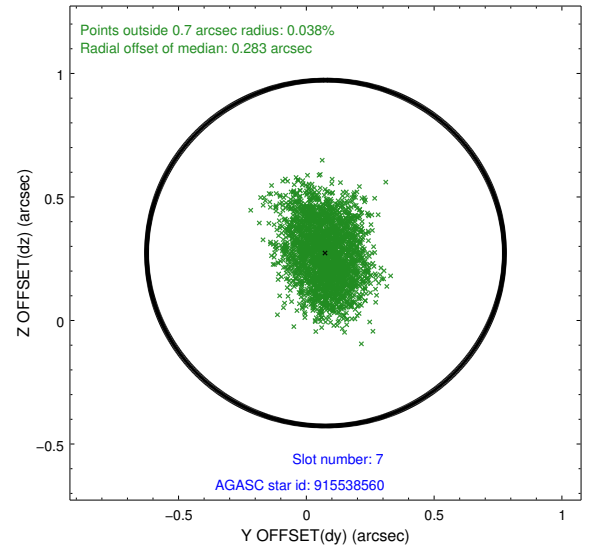
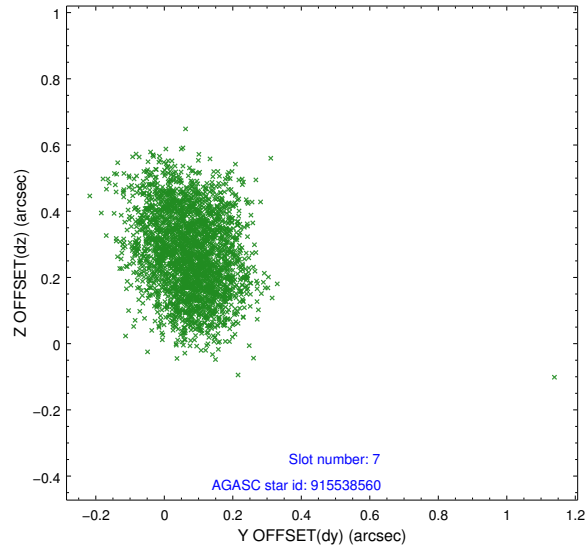
2.4.3 Slot 5



2.4.4 Slot 6

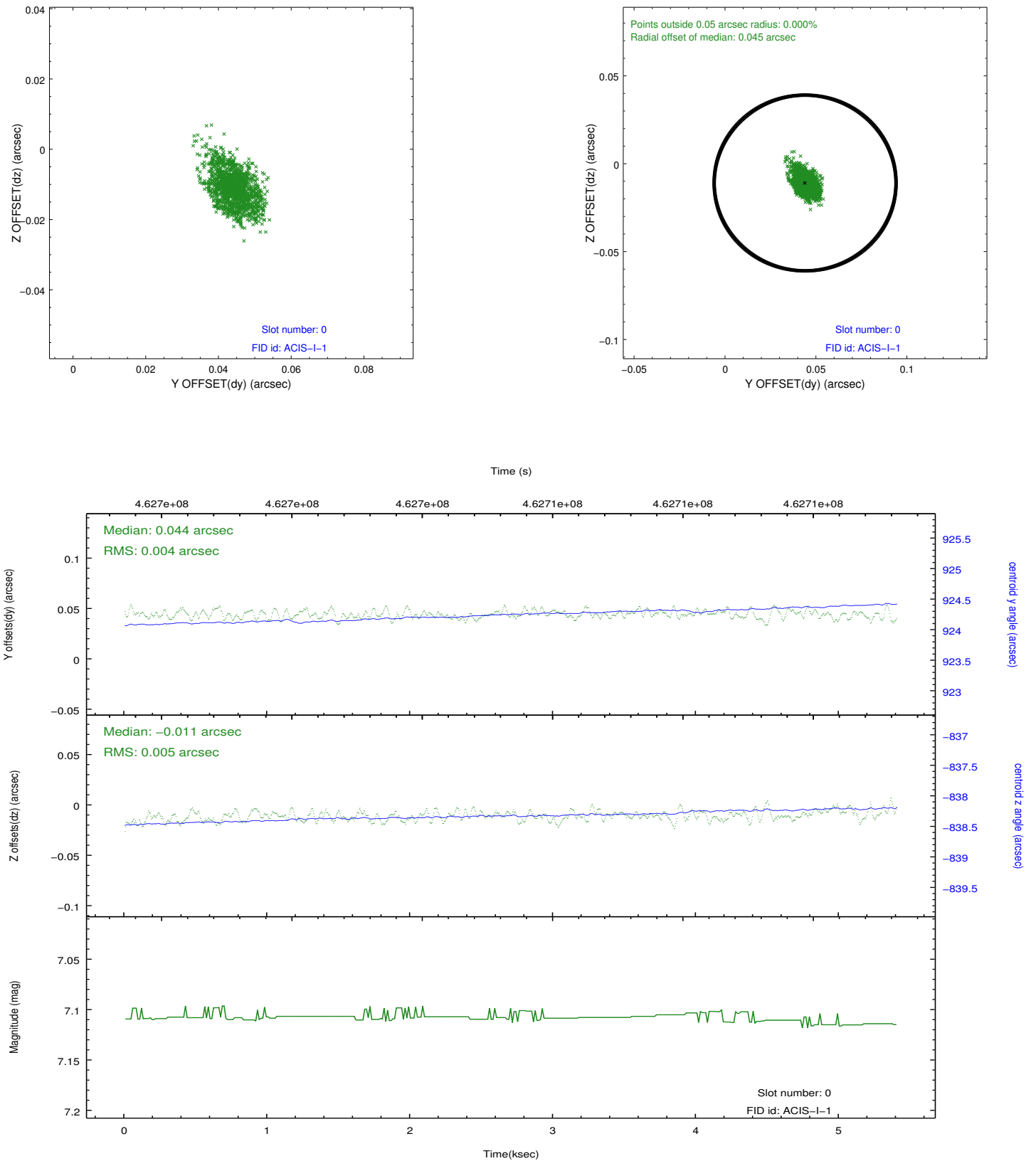


2.4.5 Slot 7

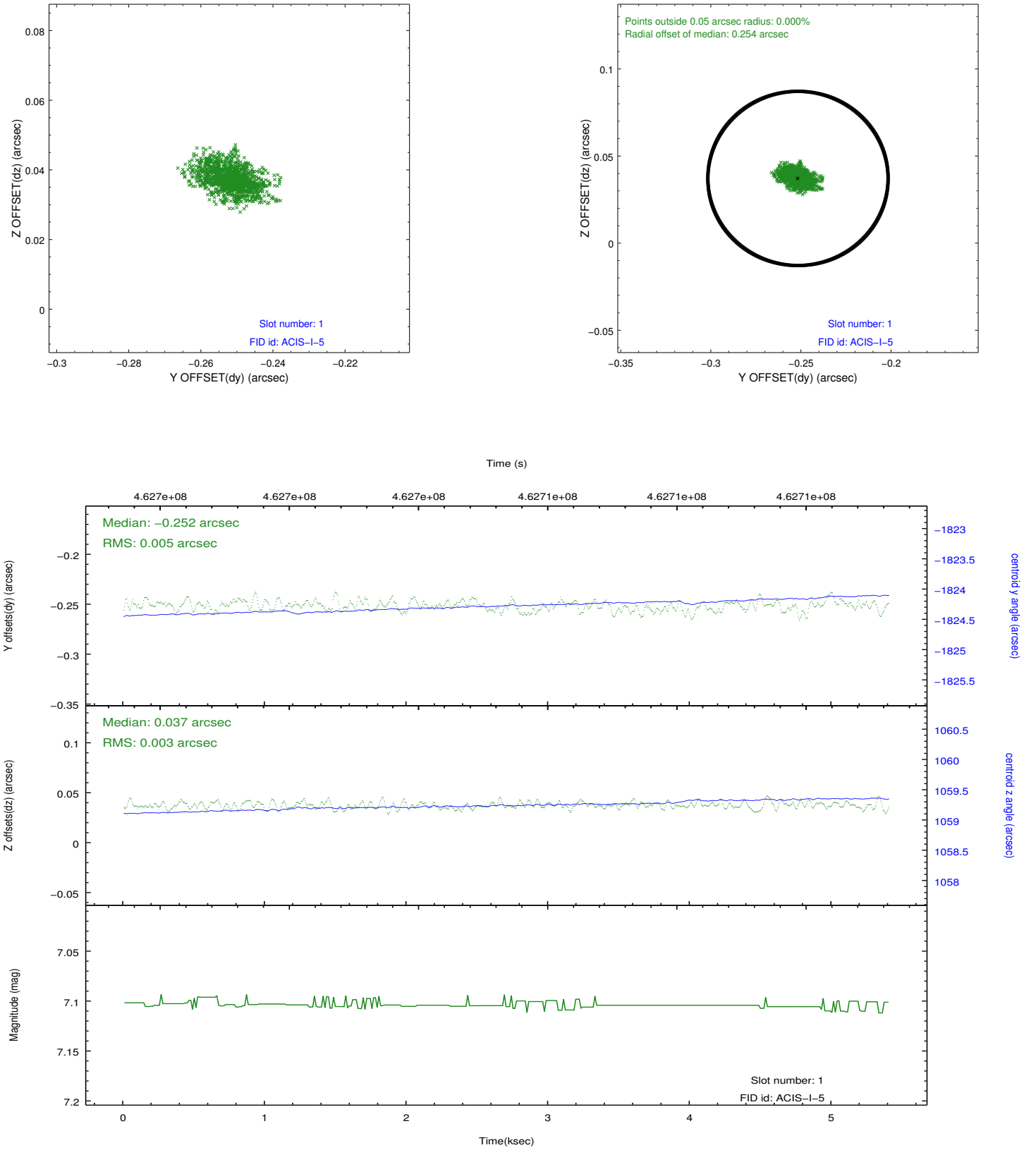


2.5 FID Slots

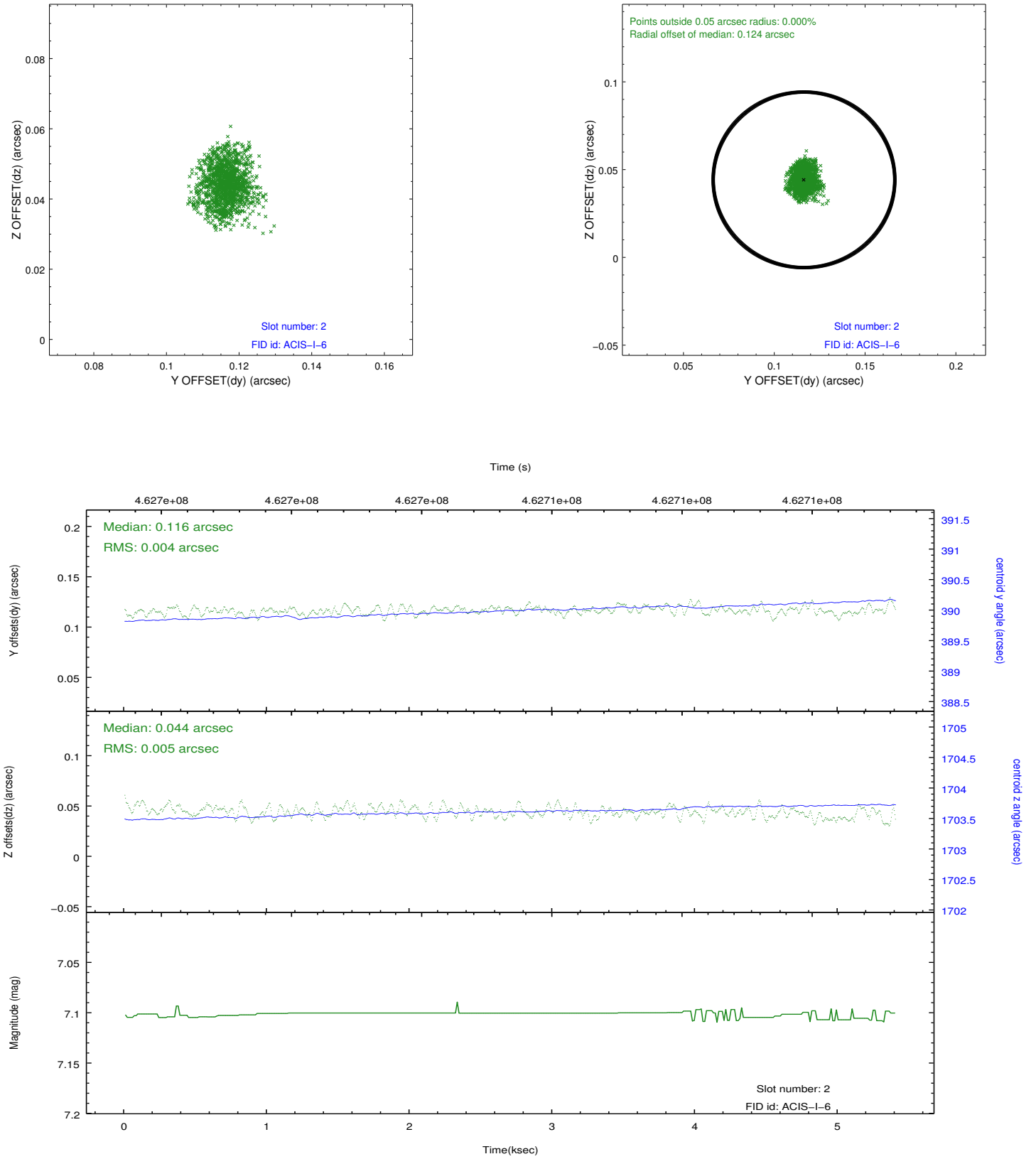
2.5.1 Slot 0



2.5.2 Slot 1



2.5.3 Slot 2



A Summary

A.1 Status

V&V Scientist	Jen Lauer
V&V Date (YYYY-MM-DD)	2012.08.30
V&V Edition	1
V&V Disposition and Status	OK
V&V Charge Time	5.0769464350343

A.2 Comments