

# V&V Reference Report

## L2 ASCDS Version : 8.4.4

Observation 9880 - L2 Version 2  
Chandra X-Ray Center

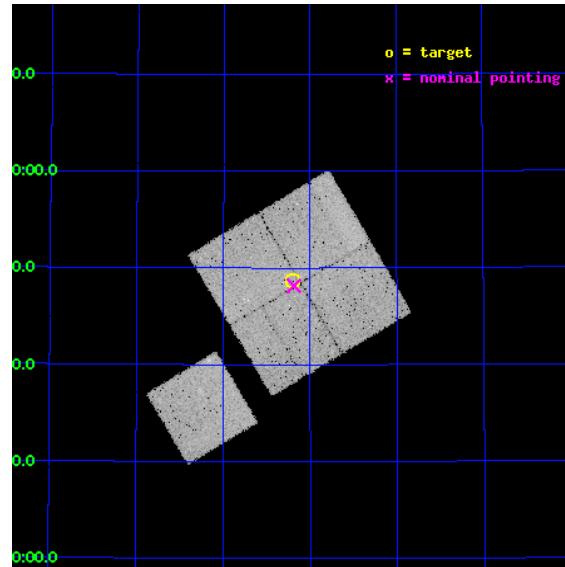
L2 Processing Date : May 17 2012

## Contents

<b>1</b>	<b>Front</b>	<b>2</b>
<b>2</b>	<b>OBI</b>	<b>3</b>
2.1	OBI . . . . .	3
2.1.1	Images . . . . .	3
2.1.2	Bias . . . . .	3
2.1.3	Parameters . . . . .	4
2.1.4	Events . . . . .	4
2.2	Compared Parameters . . . . .	5
2.3	Aspect . . . . .	6
2.4	Star Slots . . . . .	9
2.4.1	Slot 3 . . . . .	9
2.4.2	Slot 4 . . . . .	10
2.4.3	Slot 5 . . . . .	11
2.4.4	Slot 6 . . . . .	12
2.4.5	Slot 7 . . . . .	13
2.5	FID Slots . . . . .	14
2.5.1	Slot 0 . . . . .	14
2.5.2	Slot 1 . . . . .	15
2.5.3	Slot 2 . . . . .	16
<b>A</b>	<b>Summary</b>	<b>17</b>
A.1	Status . . . . .	17
A.2	Comments . . . . .	17

# 1 Front

seq_num	900797	Sequence number
obs_id	9880	Observation id
title	The Evolution of Faint AGN at High Redshift	Proposal title
observer	Prof Kirpal Nandra	Principal investigator
object	AEGIS-2	Source name
dtcycle	0	&#160
cycle	P	events from which exps? Prim/Second/Both
ra_targ	214.8	Observer's specified target RA [deg]
dec_targ	52.810611	Observer's specified target Dec [deg]
ra_nom	214.79687990849	Nominal RA [deg]
dec_nom	52.802742133463	Nominal Dec [deg]
roll_nom	239.21116813777	Nominal Roll [deg]
revision	2	Processing version of data
ontime	29893.177289128	Sum of GTIs [s]
livetime	29502.600920809	Livetime [s]
ontime0	29893.17726934	Sum of GTIs [s]
ontime1	29890.036298931	Sum of GTIs [s]
ontime2	29890.036478162	Sum of GTIs [s]
ontime3	29893.177289128	Sum of GTIs [s]
ontime6	29902.600229979	Sum of GTIs [s]
l2events	102086	Number of level 2 events

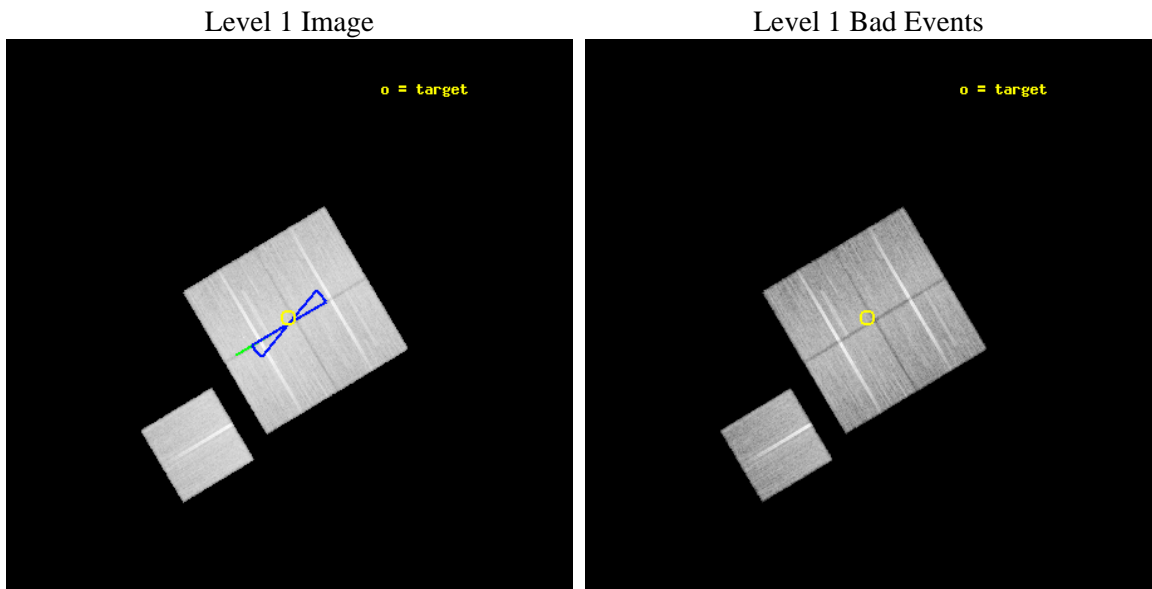




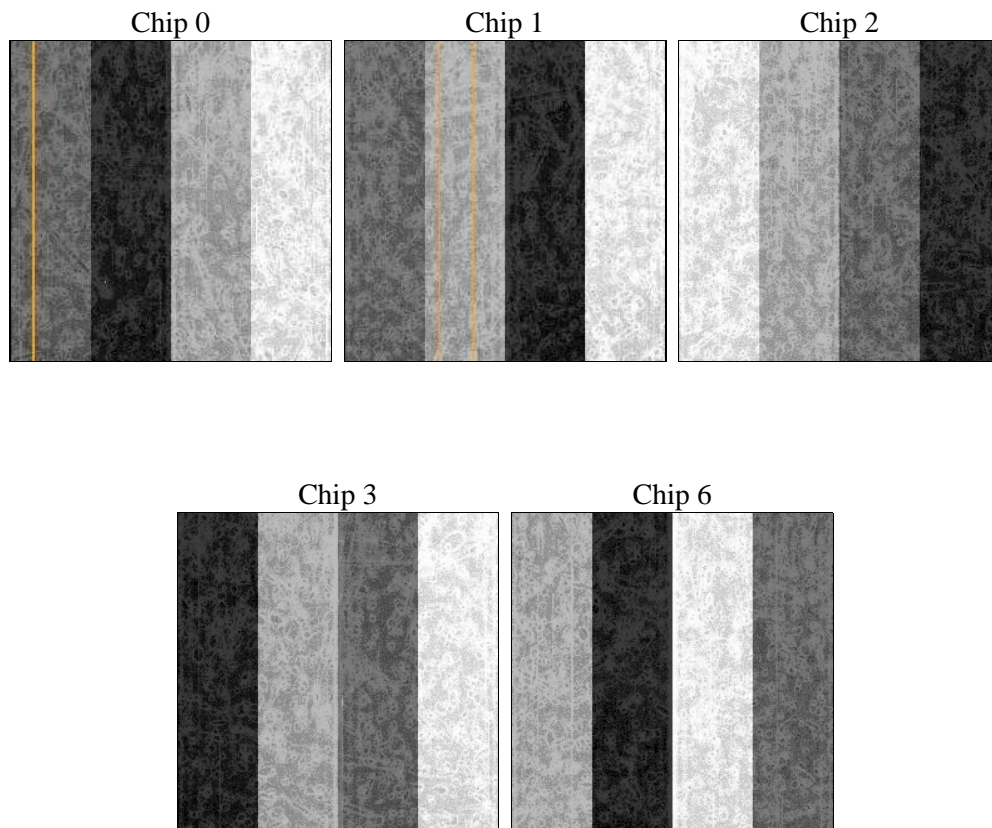
## 2 OBI

### 2.1 OBI

#### 2.1.1 Images



#### 2.1.2 Bias



### 2.1.3 Parameters

obi_num	0	Obi number	sched_exp_time	29757.000000	[s] Scheduled observation exposure time
ascdsver	8.4.4	Processing system revision	ontime	29893.177289128	Sum of GTIs [s]
caldsver	4.4.9	&#160	ontime0	29893.17726934	Sum of GTIs [s]
date	2012-05-17T16:35:39	Date and time of file creation	ontime1	29890.036298931	Sum of GTIs [s]
revision	2	Processing version of data	ontime2	29890.036478162	Sum of GTIs [s]
			ontime3	29893.177289128	Sum of GTIs [s]
			ontime6	29902.600229979	Sum of GTIs [s]
			l1events	1200895	Number of level 1 events

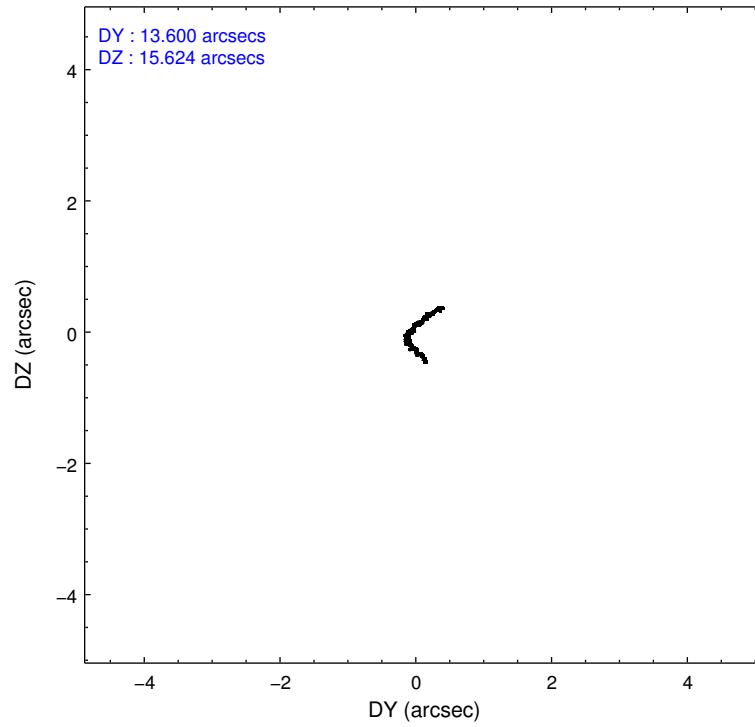
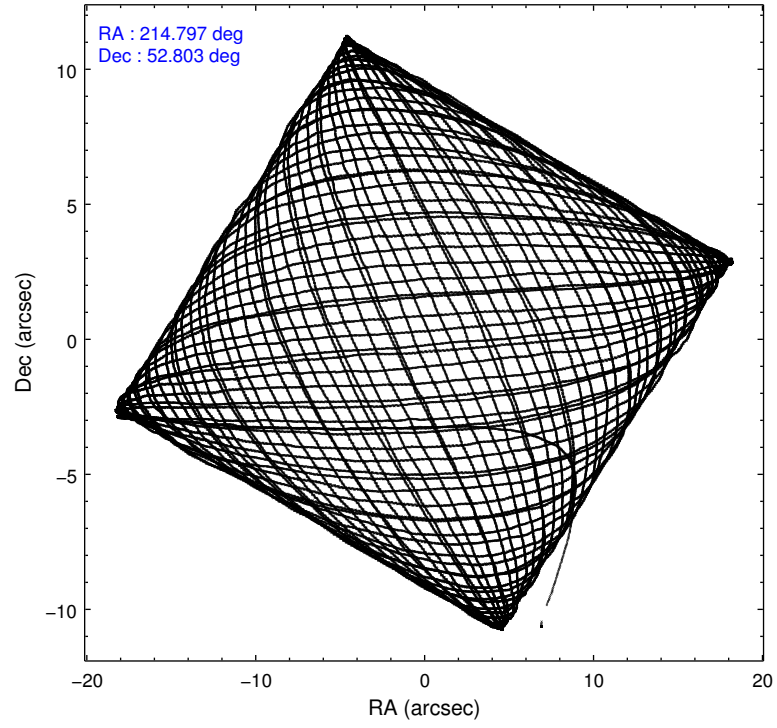
### 2.1.4 Events

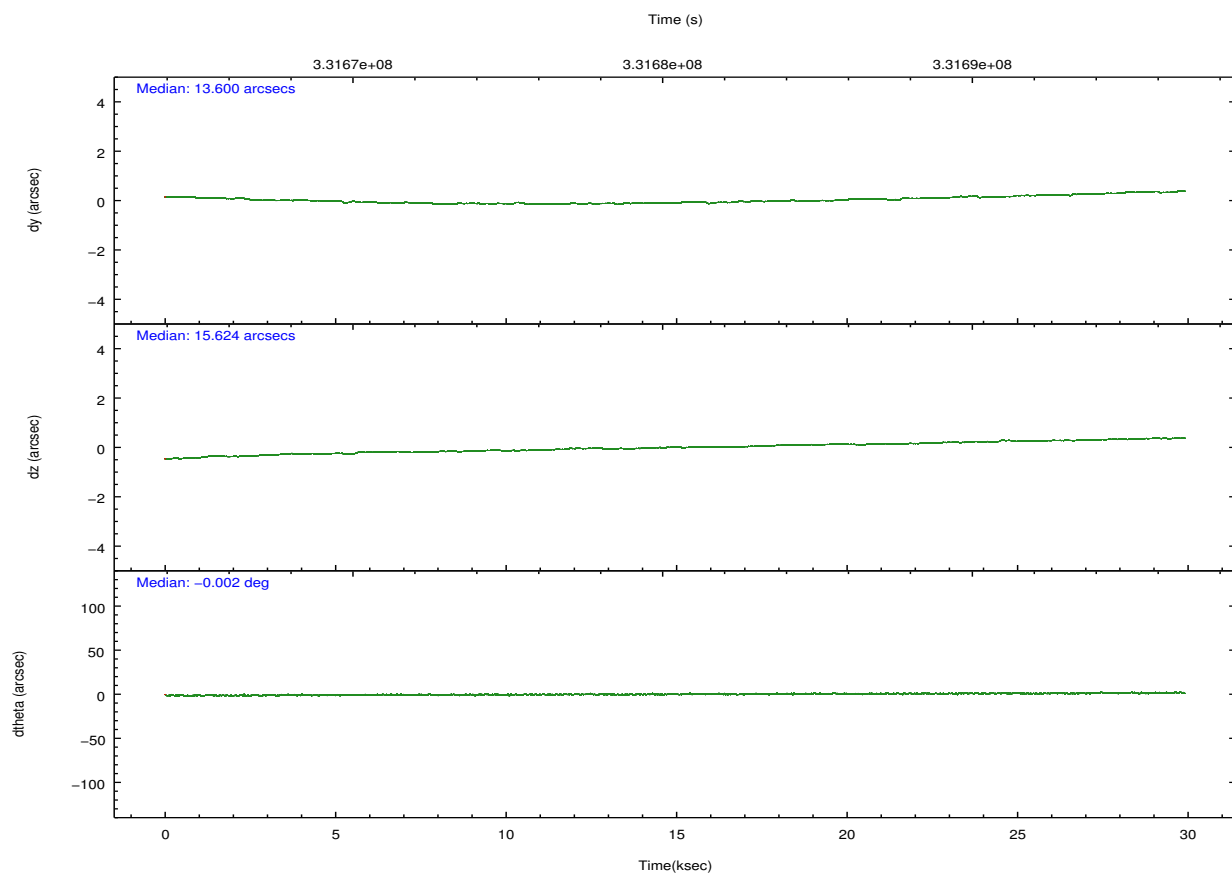
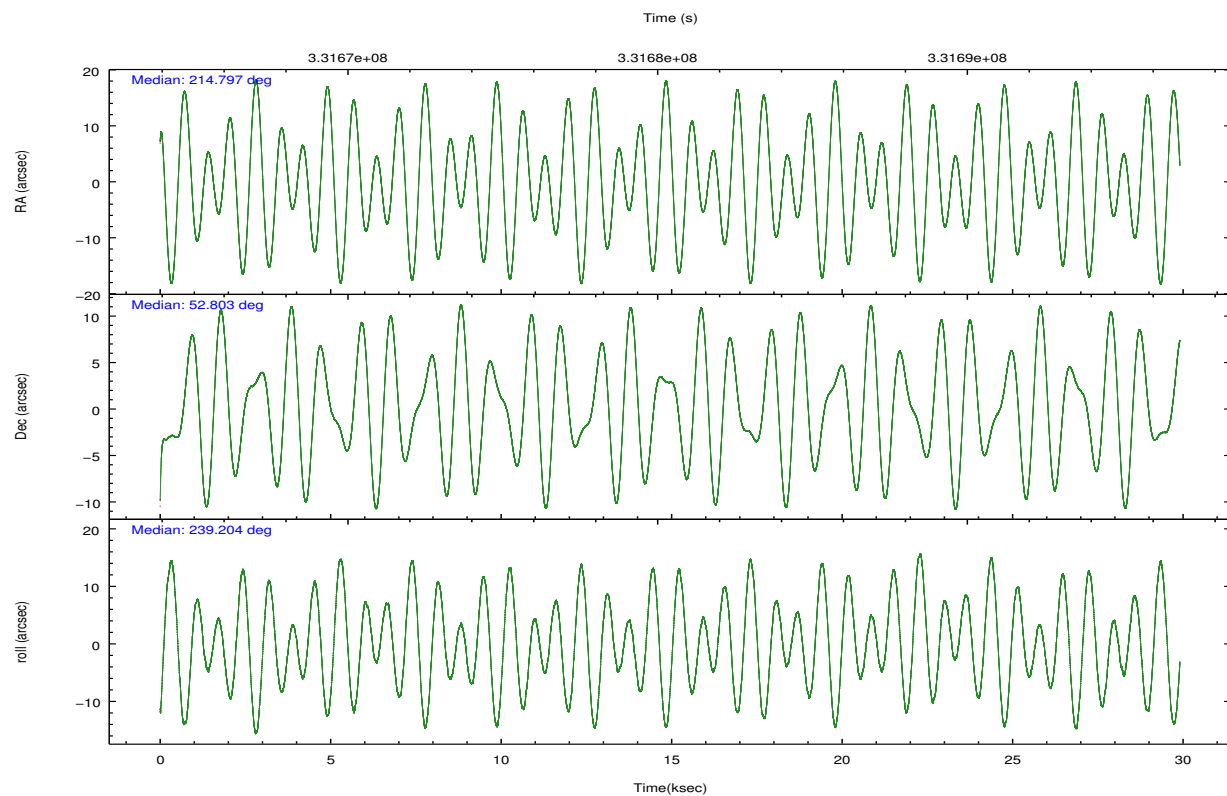
	ccd 0	ccd 1	ccd 2	ccd 3	ccd 6		ccd 0	ccd 1	ccd 2	ccd 3	ccd 6
level 1 events	229467	235342	254094	240952	241040	grade 0 events	8385	9806	8584	8061	8672
rejected events	205192	207889	230068	217784	216417		3%	4%	3%	3%	3%
rejected %	89%	88%	90%	90%	89%	grade 1 events	133	144	134	143	104
							0%	0%	0%	0%	0%
						grade 2 events	6177	6212	5988	5220	5394
							2%	2%	2%	2%	2%
						grade 3 events	2713	3001	2467	2717	2796
							1%	1%	0%	1%	1%
						grade 4 events	2580	2974	2631	2644	2691
							1%	1%	1%	1%	1%
						grade 5 events	8774	9472	8338	10331	9764
							3%	4%	3%	4%	4%
						grade 6 events	4750	5823	4640	4805	5420
							2%	2%	1%	1%	2%
						grade 7 events	195955	197910	221312	207031	206199
							85%	84%	87%	85%	85%

## 2.2 Compared Parameters

Parameter	Planned	Actual	Parameter	Planned	Actual
Instrument	ACIS	ACIS	Obspar format version number	7	7
Detector	ACIS-01236	ACIS-01236	Obspar file type	PREDICTED	ACTUAL
Grating	NONE	NONE	Obspar update status	NONE	UPDATED
Data mode	VFAINT	VFAINT	CCD I0 on	Y	Y
Observation mode	POINTING	POINTING	CCD I1 on	Y	Y
[deg] Pointing RA	214.797332	214.7968799084927	CCD I2 on	Y	Y
[deg] Pointing Dec	52.830238	52.80274213346256	CCD I3 on	Y	Y
[deg] Pointing Roll	239.002128	239.2111681377713	CCD S0 on	N	N
[deg] Roll angle	50.000000	50.000000	CCD S1 on	N	N
[deg] Roll tolerance	10.000000	10.000000	CCD S2 on	O1	Y
Roll constraint allows 180D rotation	Y	Y	CCD S3 on	N	N
[mm] SIM focus pos	-0.782348	-0.7809083437167272	CCD S4 on	N	N
[mm] SIM defocus	0	0.001439871863259334	CCD S5 on	N	N
[mm] SIM translation stage pos	-233.592463	-233.5874344608287	Number of optional ACIS chips dropped	0	0
[mm] SIM translation stage offset	0	-0.005018542100998502	On-chip summing requested	N	N
[s] Observation start time (MET)	331665592.184000	331664417.97549	Subarray requested	NONE	NONE
Observation start date	2008-07-05T17:18:47	2008-07-05T17:00:17	Alternating exposures requested	N	N
[s] Observation end time (MET)	331695349.184000	331696270.36455	[s] Primary exposure time	0.000000	3.1
Observation end date	2008-07-06T01:34:44	2008-07-06T01:51:10			
Read mode	TIMED	TIMED			

## 2.3 Aspect



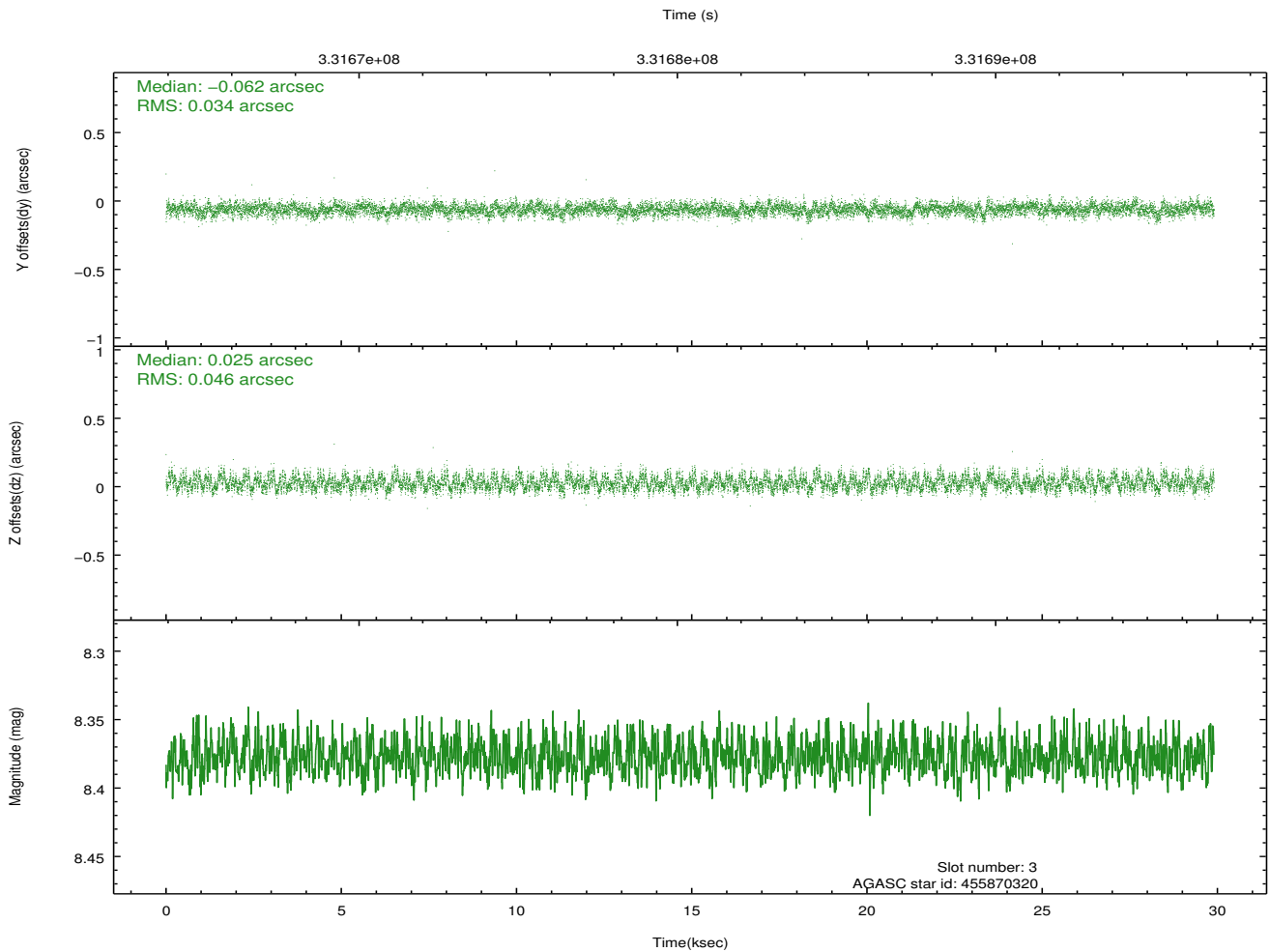
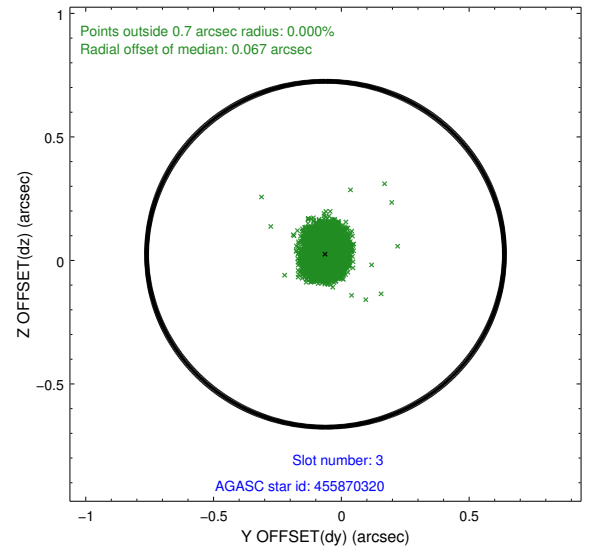
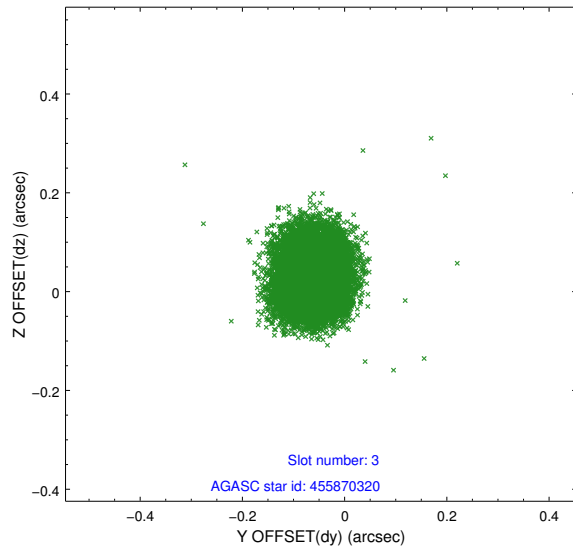


### Slot Statistics

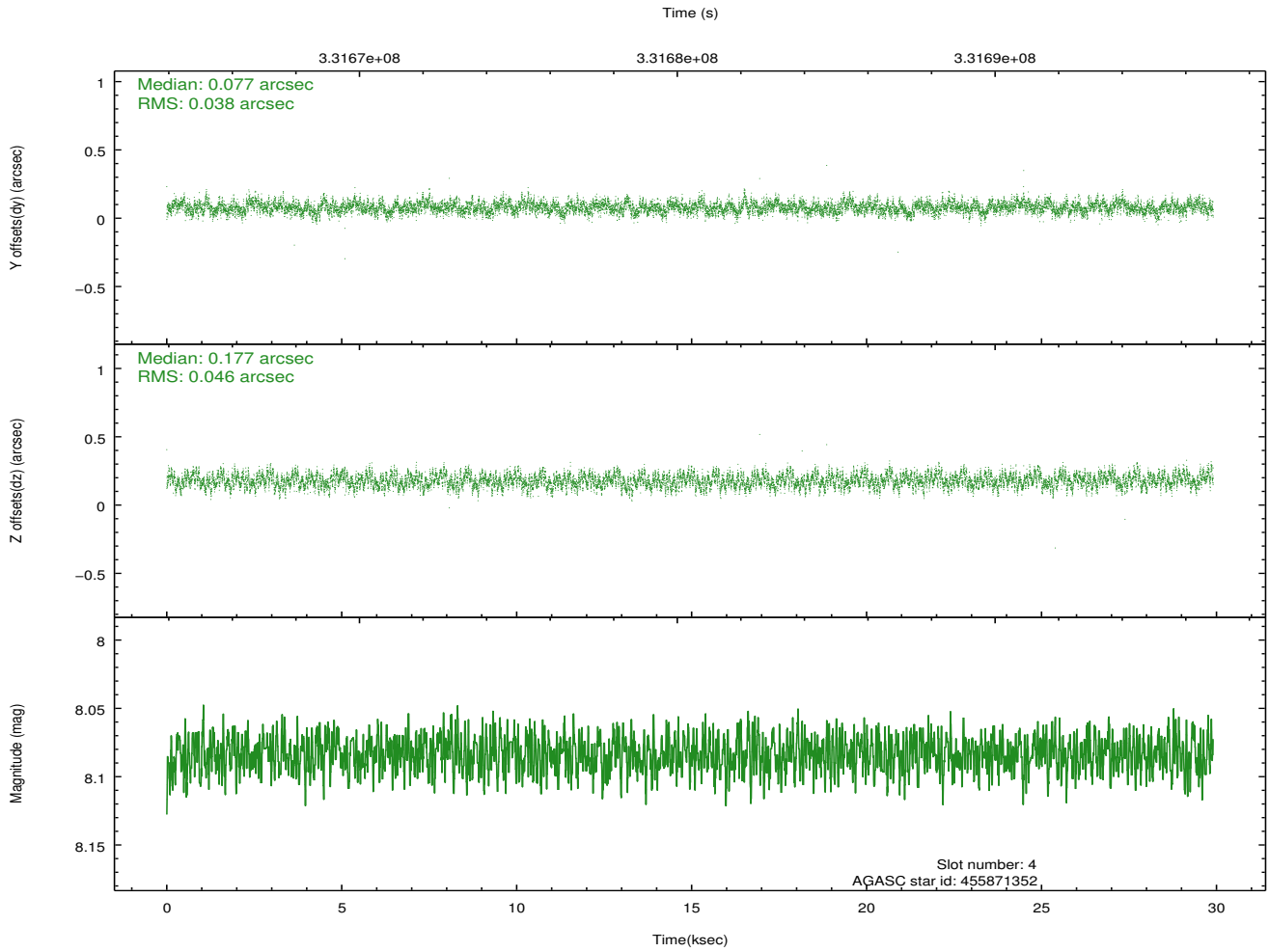
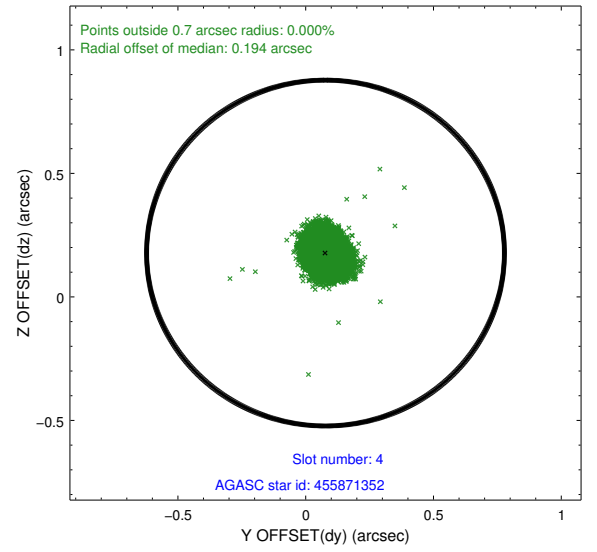
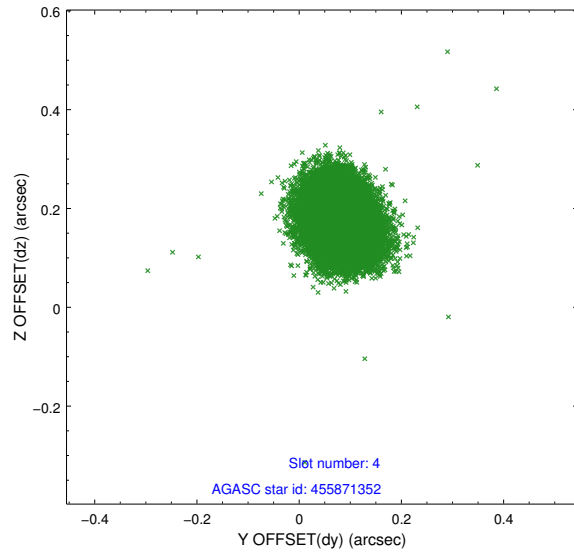
slot	status	id	mag	n_pts	med_dy	med_dz	dr1	dr2	ra	dec	mean_y	mean_z
0	FID	ACIS-I-1	7.02	7294	0.037	-0.022	0.013	0.023	0.000000	0.000000	925.90	-839.26
1	FID	ACIS-I-5	7.01	7295	-0.212	0.039	0.010	0.018	0.000000	0.000000	-1822.41	1058.26
2	FID	ACIS-I-6	7.02	7293	0.082	0.053	0.008	0.014	0.000000	0.000000	391.42	1702.85
3	GUIDE	455870320	8.38	14589	-0.062	0.025	0.061	0.098	214.874440	52.401638	1235.60	940.10
4	GUIDE	455871352	8.08	14587	0.077	0.177	0.063	0.101	215.099961	52.172669	1684.26	1791.68
5	GUIDE	505806936	7.03	14589	0.114	-0.024	0.068	0.112	213.820815	52.535927	1997.83	-1294.38
6	GUIDE	505812088	8.15	14585	-0.044	0.033	0.064	0.105	214.186617	53.263562	-664.00	-1933.64
7	GUIDE	505812376	7.62	14588	-0.089	-0.211	0.053	0.084	214.039537	52.937930	507.47	-1613.71

## 2.4 Star Slots

### 2.4.1 Slot 3

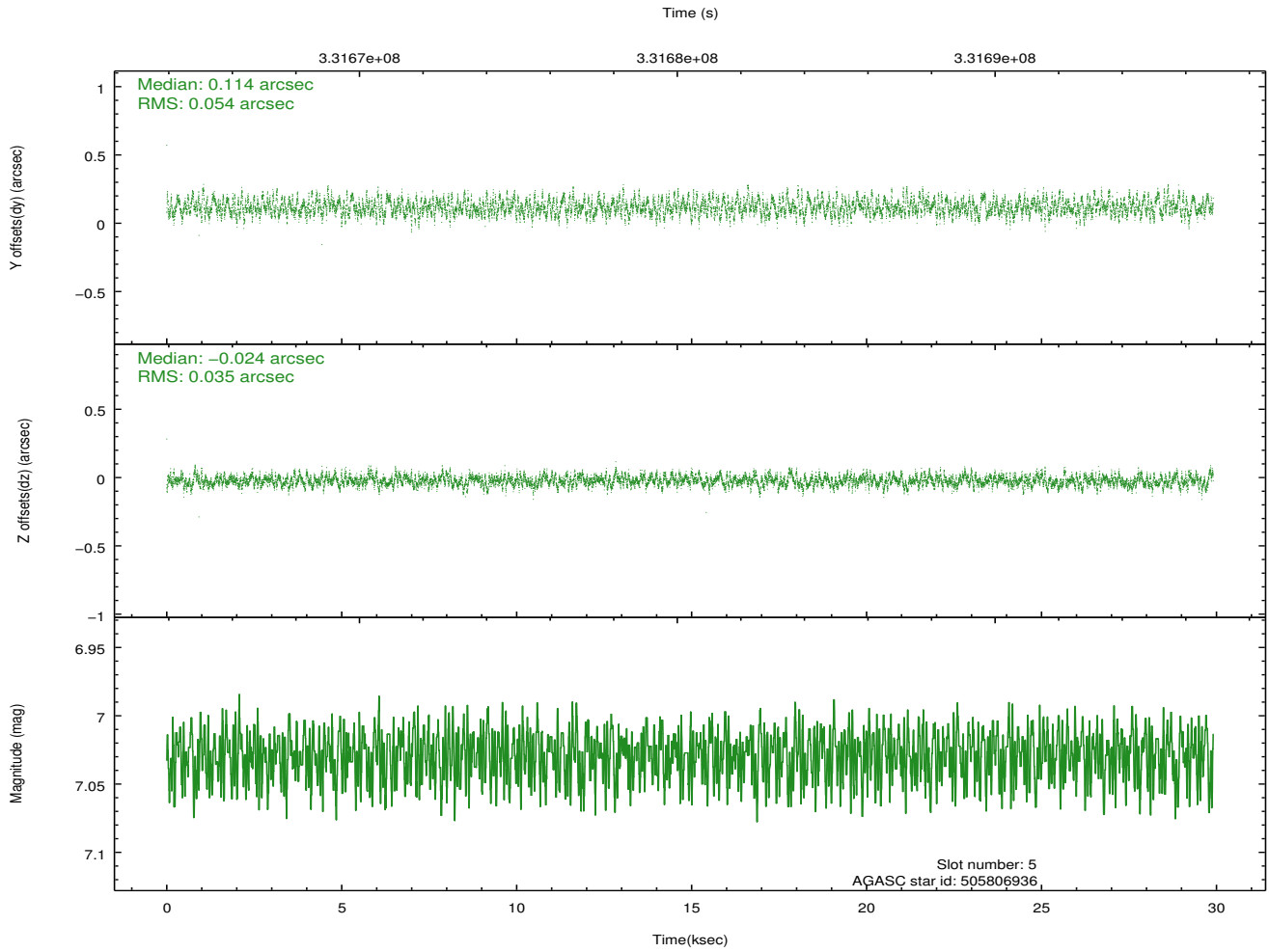
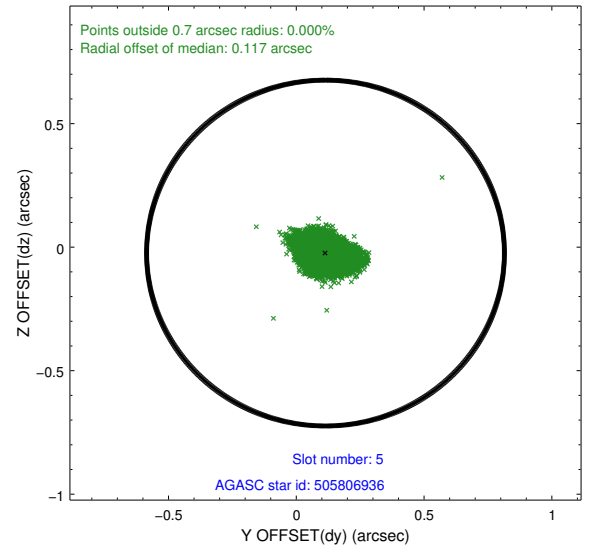
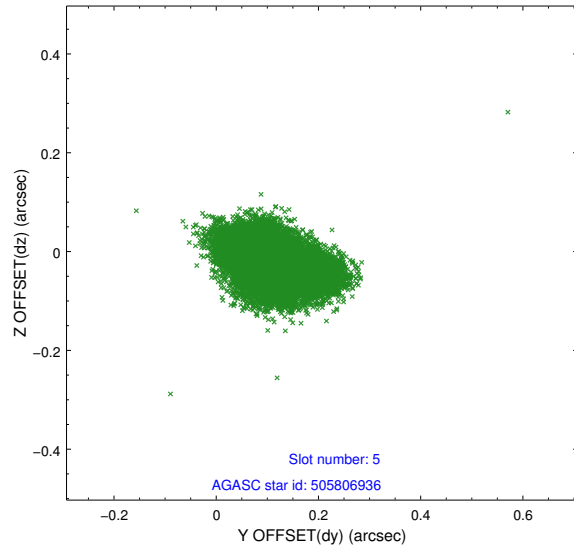


## 2.4.2 Slot 4

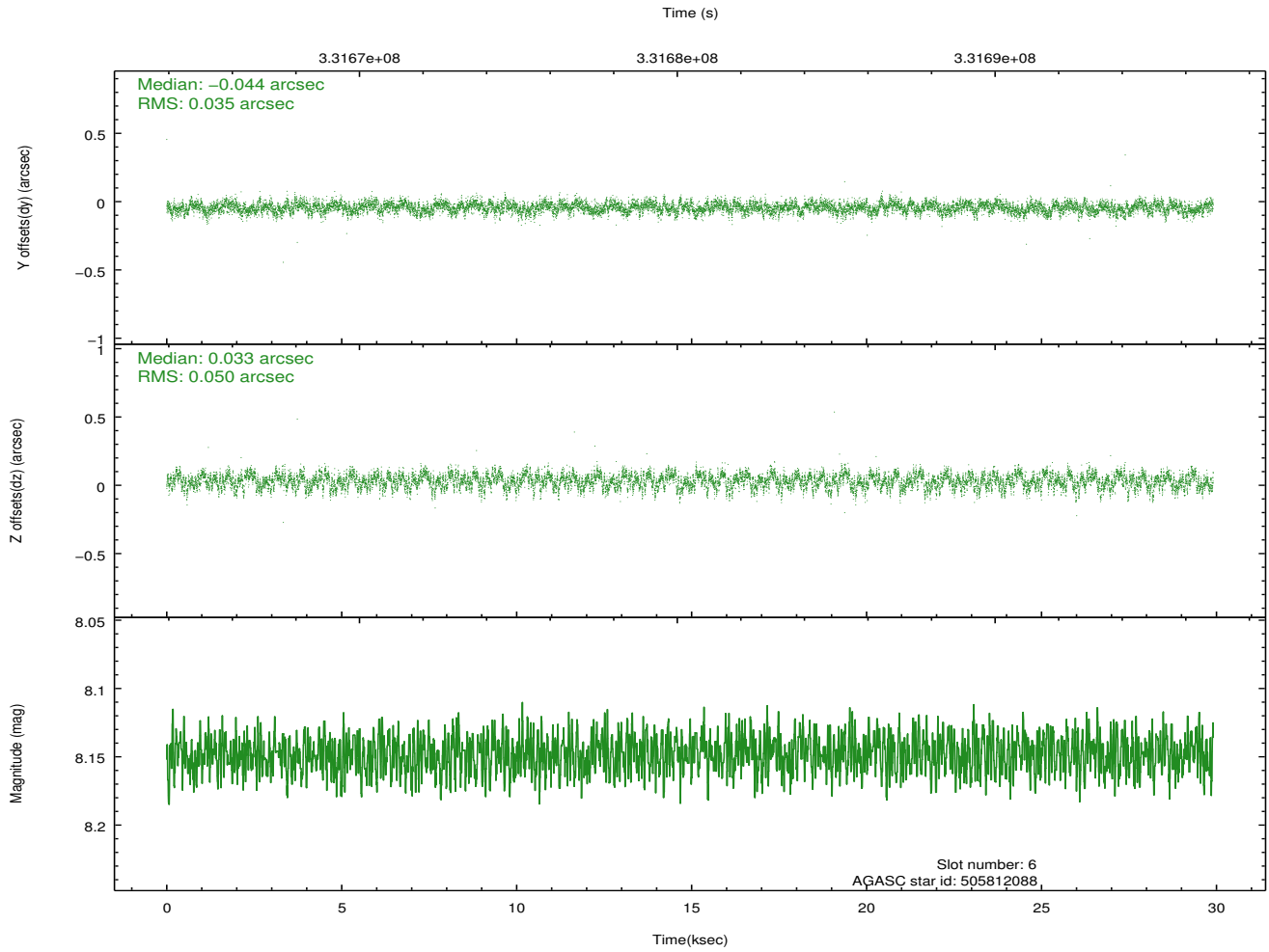
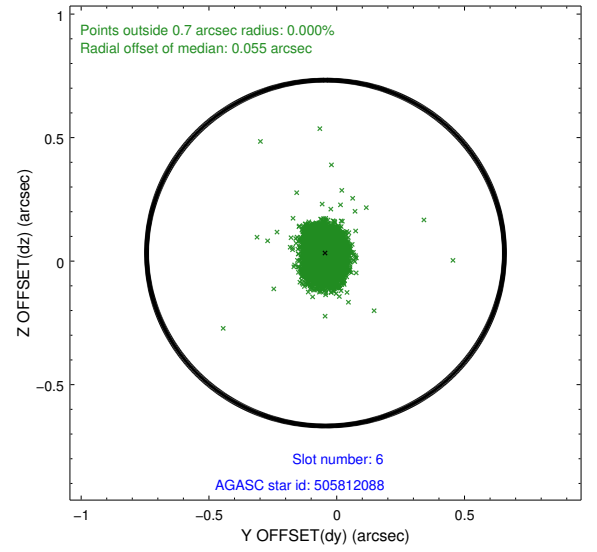
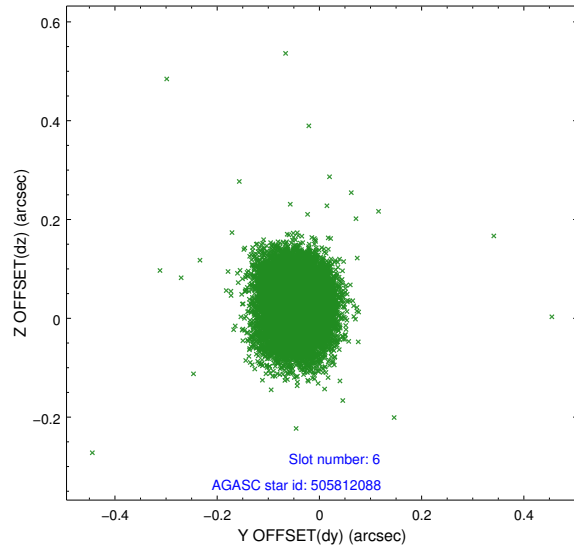




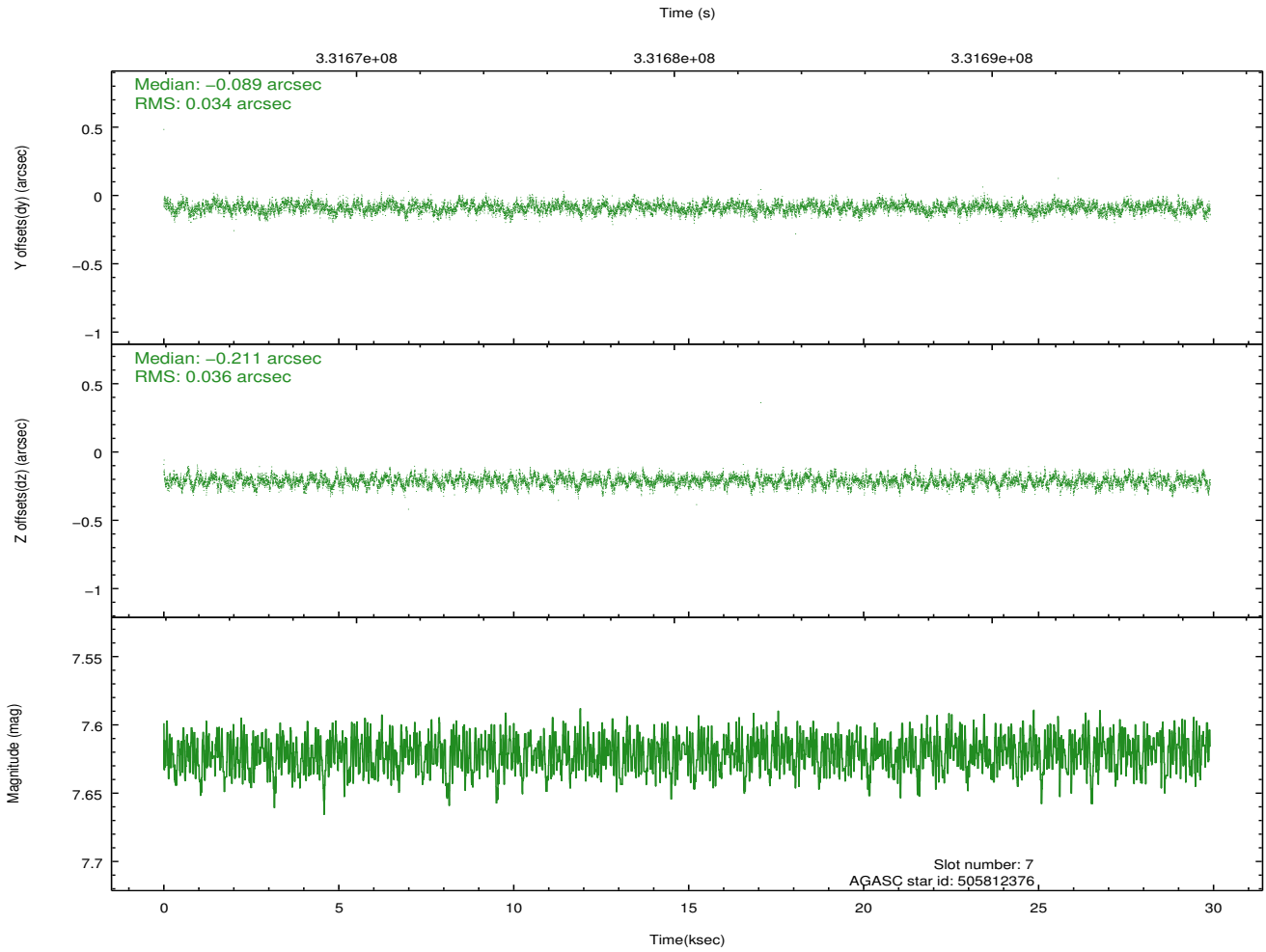
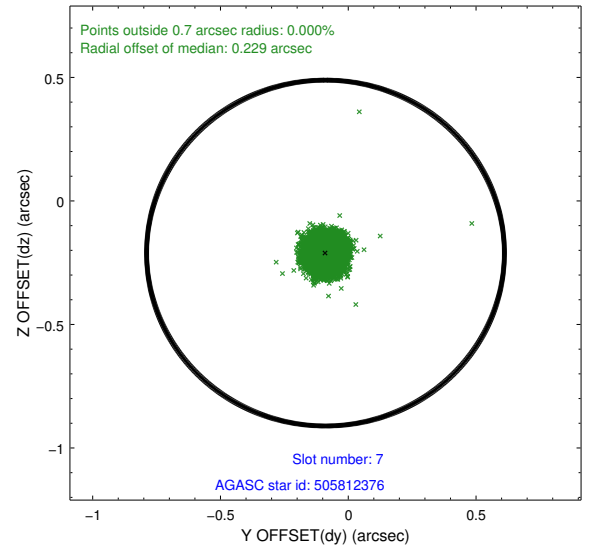
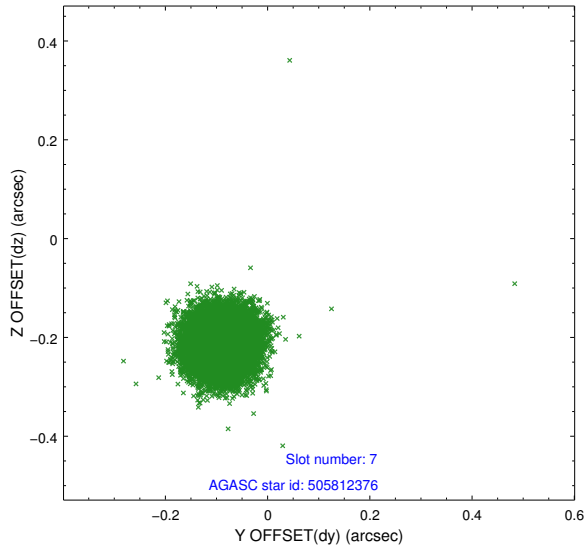
### 2.4.3 Slot 5



## 2.4.4 Slot 6

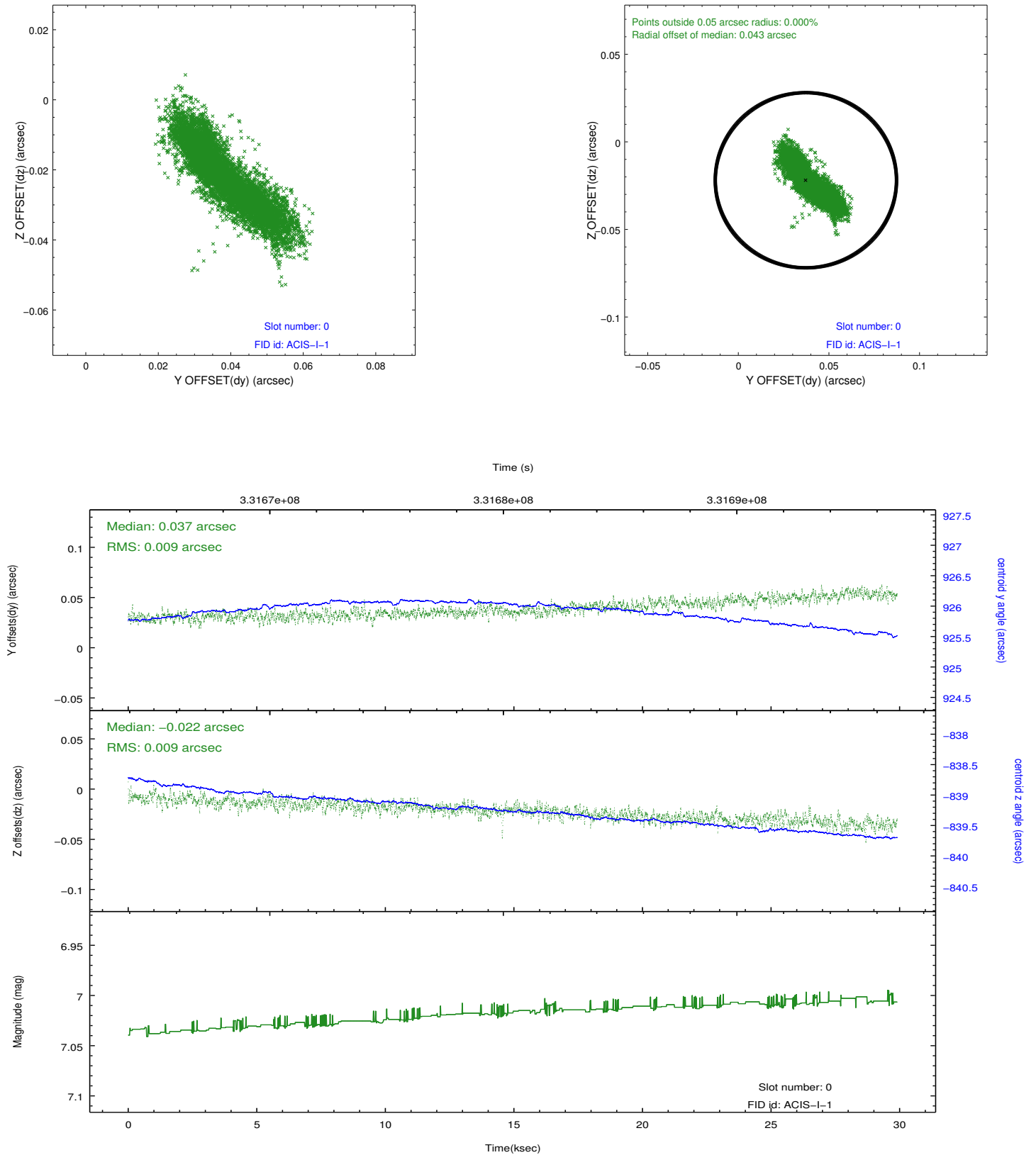


## 2.4.5 Slot 7

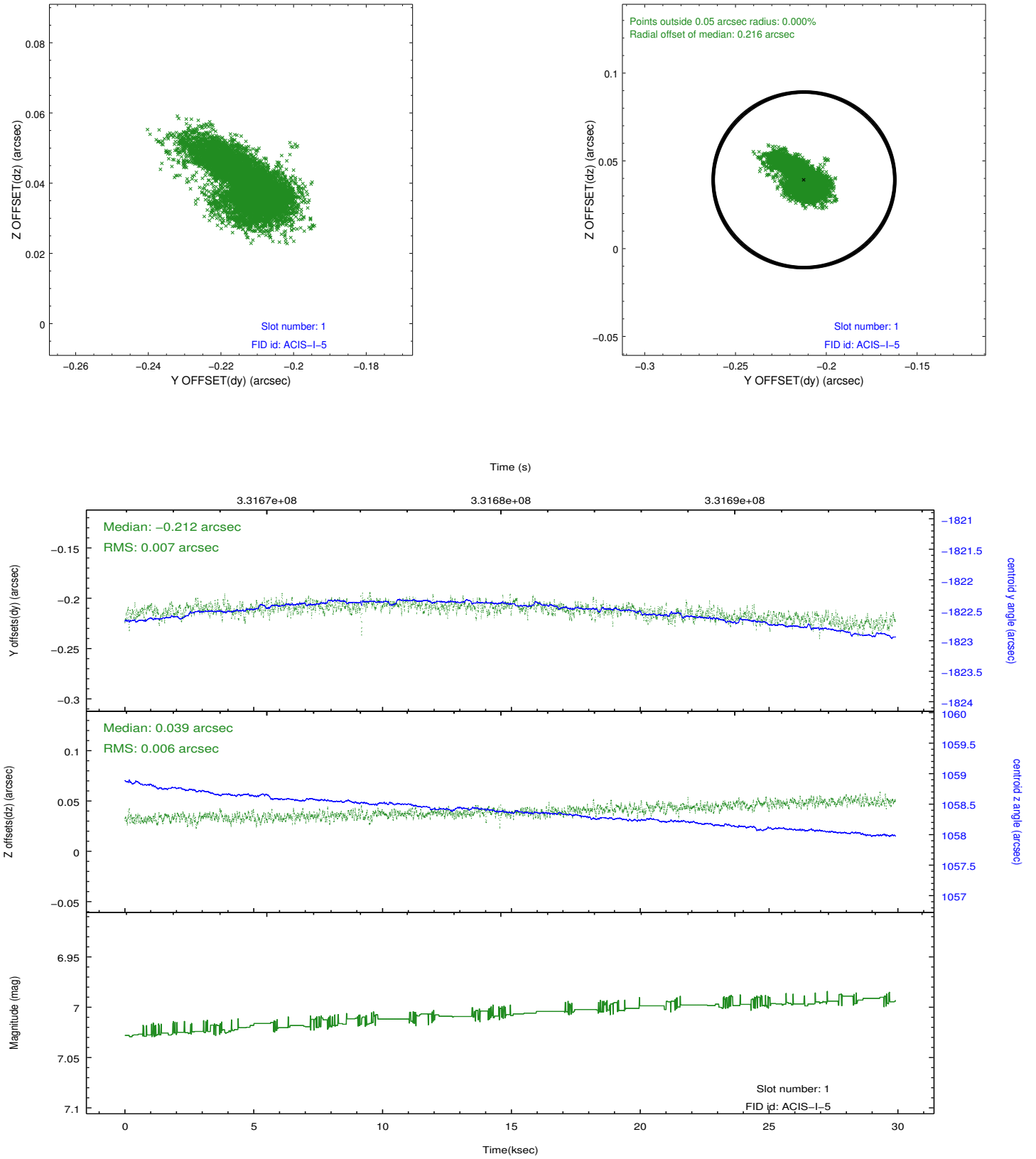


## 2.5 FID Slots

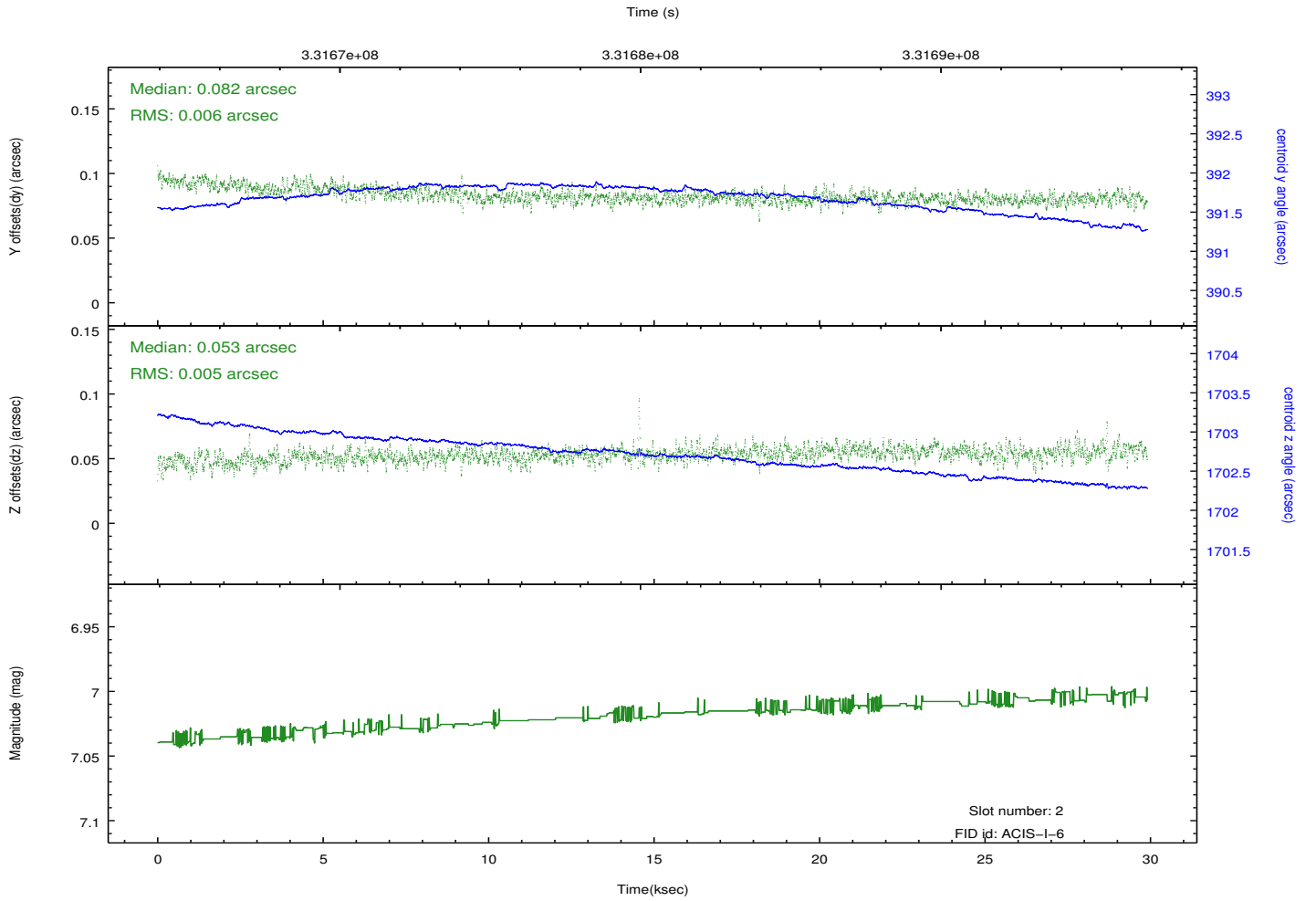
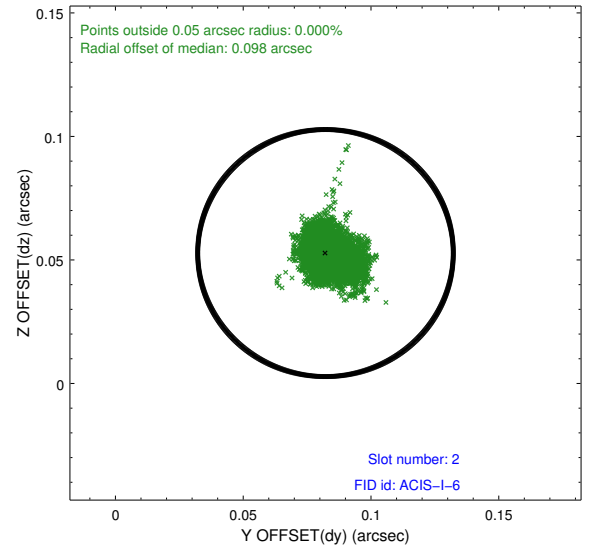
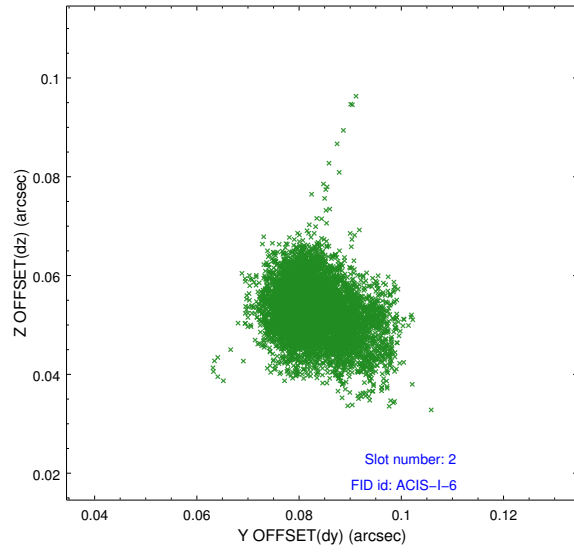
### 2.5.1 Slot 0



## 2.5.2 Slot 1



### 2.5.3 Slot 2



## A Summary

### A.1 Status

V&V Scientist	Beth Sundheim
V&V Date (YYYY-MM-DD)	2012.05.23
V&V Edition	1
V&V Disposition and Status	OK
V&V Charge Time	29.8931772

### A.2 Comments

Joint proposal with Spitzer.

Roll preference met.