

V&V Reference Report

L2 ASCDS Version : 8.4.4

Observation 9870 - L2 Version 2
Chandra X-Ray Center

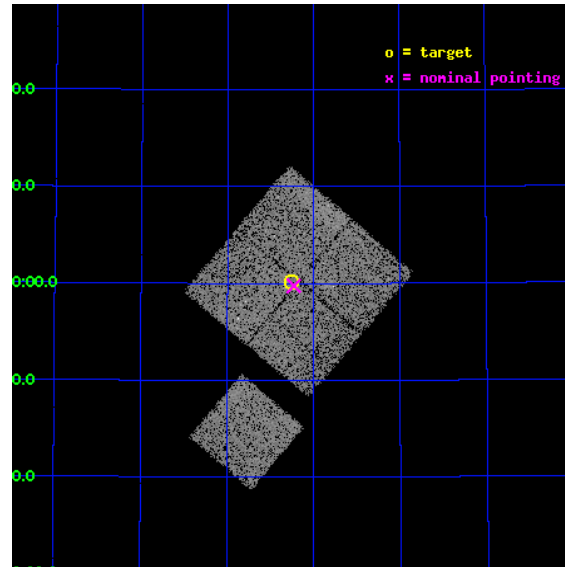
L2 Processing Date : May 16 2012

Contents

1	Front	2
2	OBI	3
2.1	OBI	3
2.1.1	Images	3
2.1.2	Bias	3
2.1.3	Parameters	4
2.1.4	Events	4
2.2	Compared Parameters	5
2.3	Aspect	6
2.4	Star Slots	9
2.4.1	Slot 3	9
2.4.2	Slot 4	10
2.4.3	Slot 5	11
2.4.4	Slot 6	12
2.4.5	Slot 7	13
2.5	FID Slots	14
2.5.1	Slot 0	14
2.5.2	Slot 1	15
2.5.3	Slot 2	16
A	Summary	17
A.1	Status	17
A.2	Comments	17

1 Front

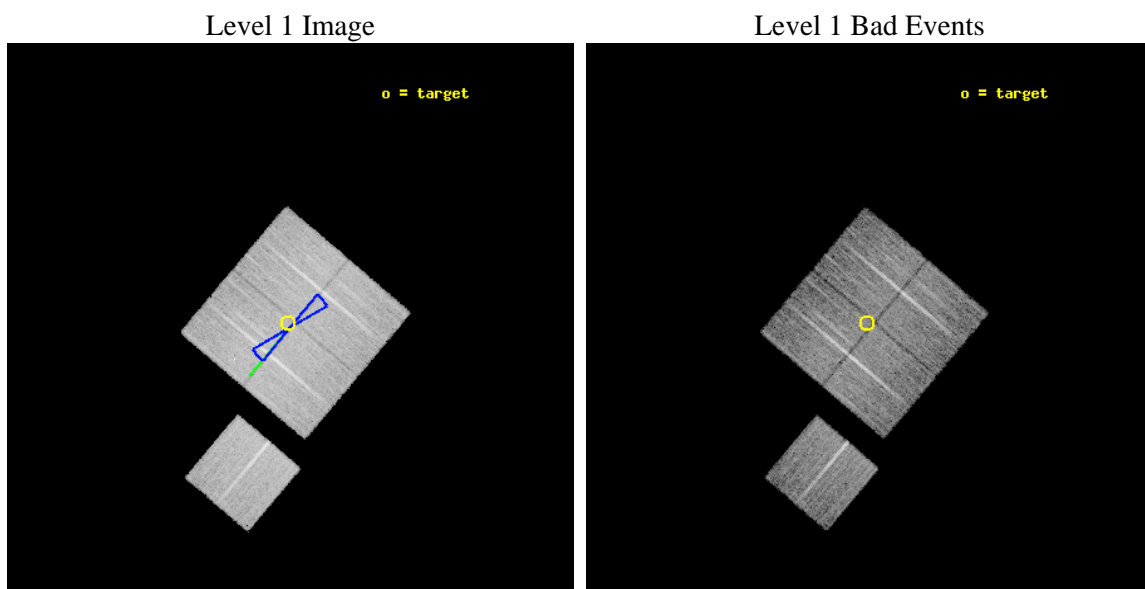
seq_num	900796	Sequence number
obs_id	9870	Observation id
title	The Evolution of Faint AGN at High Redshift	Proposal title
observer	Prof Kirpal Nandra	Principal investigator
object	AEGIS-1	Source name
dtcycle	0	
cycle	P	events from which exps? Prim/Second/Both
ra_targ	215.064583	Observer's specified target RA [deg]
dec_targ	53.002694	Observer's specified target Dec [deg]
ra_nom	215.05735875861	Nominal RA [deg]
dec_nom	52.99583187173	Nominal Dec [deg]
roll_nom	220.21448683025	Nominal Roll [deg]
revision	2	Processing version of data
ontime	11141.359095395	Sum of GTIs [s]
livetime	10995.789036664	Livetime [s]
ontime0	11144.500085711	Sum of GTIs [s]
ontime1	11138.218125165	Sum of GTIs [s]
ontime2	11144.500085711	Sum of GTIs [s]
ontime3	11141.359095395	Sum of GTIs [s]
ontime6	11138.218095064	Sum of GTIs [s]
l2events	38226	Number of level 2 events



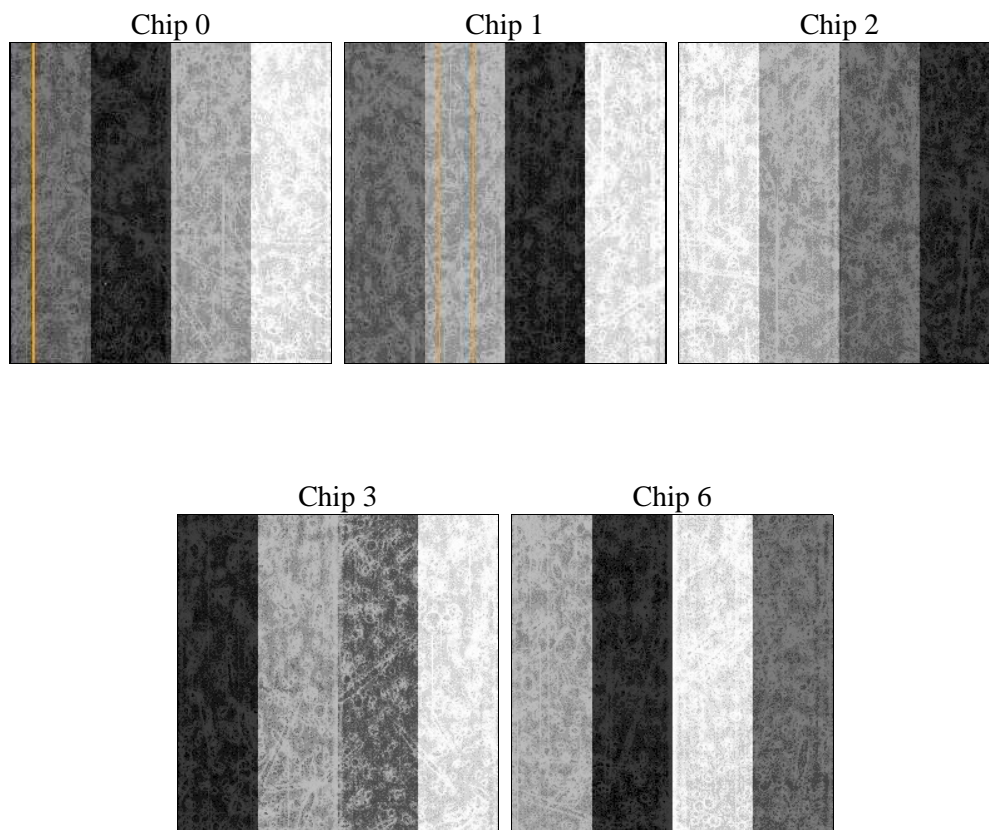
2 OBI

2.1 OBI

2.1.1 Images



2.1.2 Bias



2.1.3 Parameters

obi_num	0	Obi number	sched_exp_time	11000.000000	[s] Scheduled observation exposure time
ascdsver	8.4.4	Processing system revision	ontime	11141.359095395	Sum of GTIs [s]
caldbver	4.4.9	 	ontime0	11144.500085711	Sum of GTIs [s]
date	2012-05-16T14:23:01	Date and time of file creation	ontime1	11138.218125165	Sum of GTIs [s]
revision	2	Processing version of data	ontime2	11144.500085711	Sum of GTIs [s]
			ontime3	11141.359095395	Sum of GTIs [s]
			ontime6	11138.218095064	Sum of GTIs [s]
			l1events	440305	Number of level 1 events

2.1.4 Events

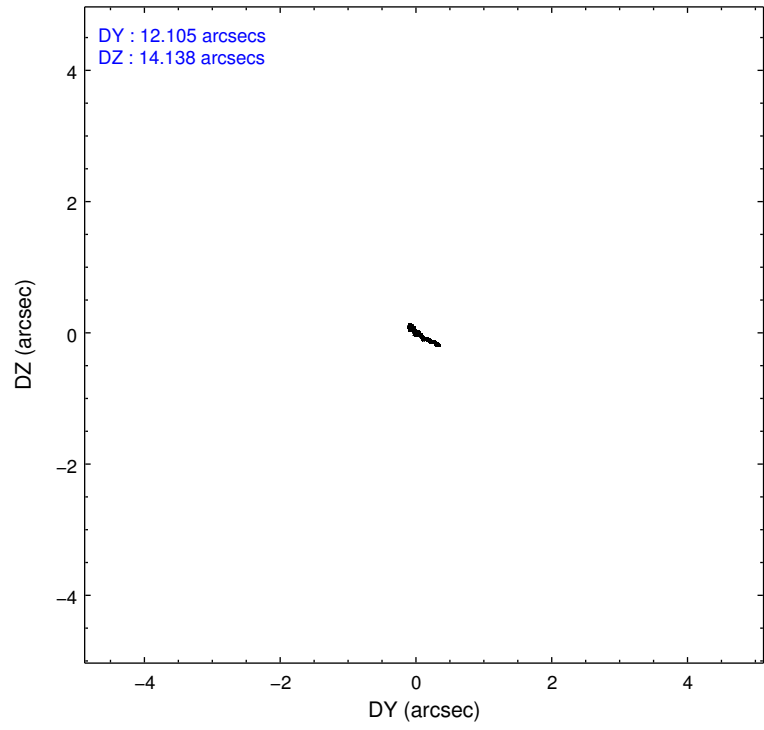
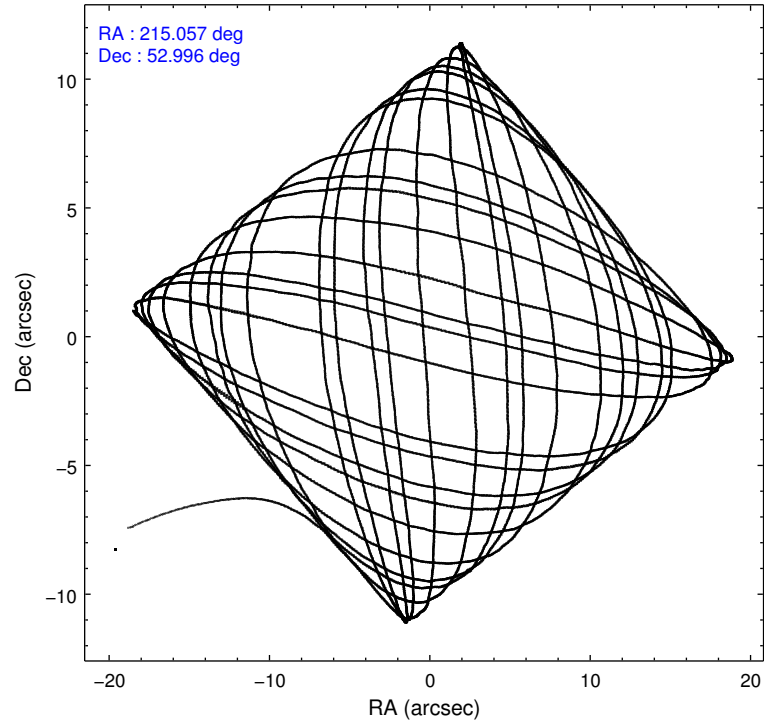
	ccd 0	ccd 1	ccd 2	ccd 3	ccd 6
level 1 events	85389	85747	92493	88000	88676
rejected events	76470	75444	83660	79272	79494
rejected %	89%	87%	90%	90%	89%

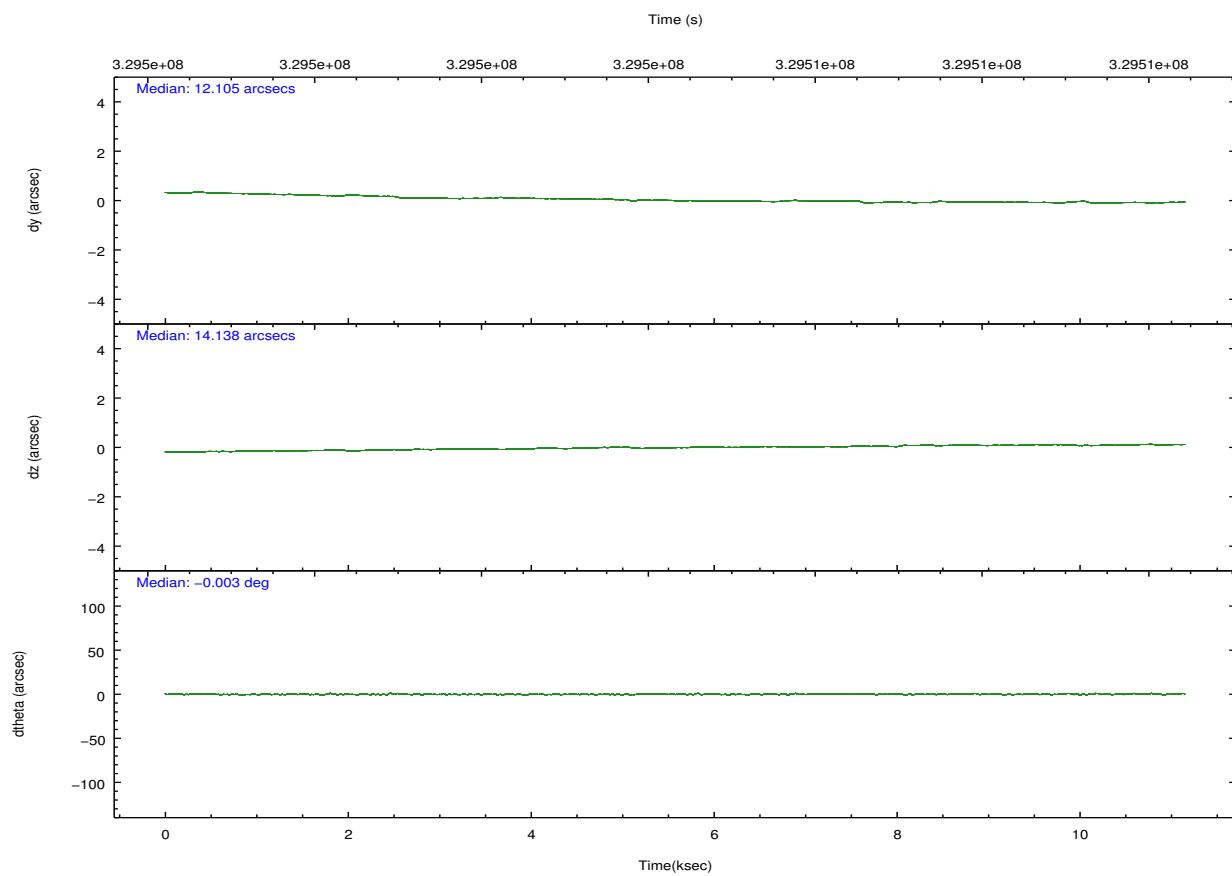
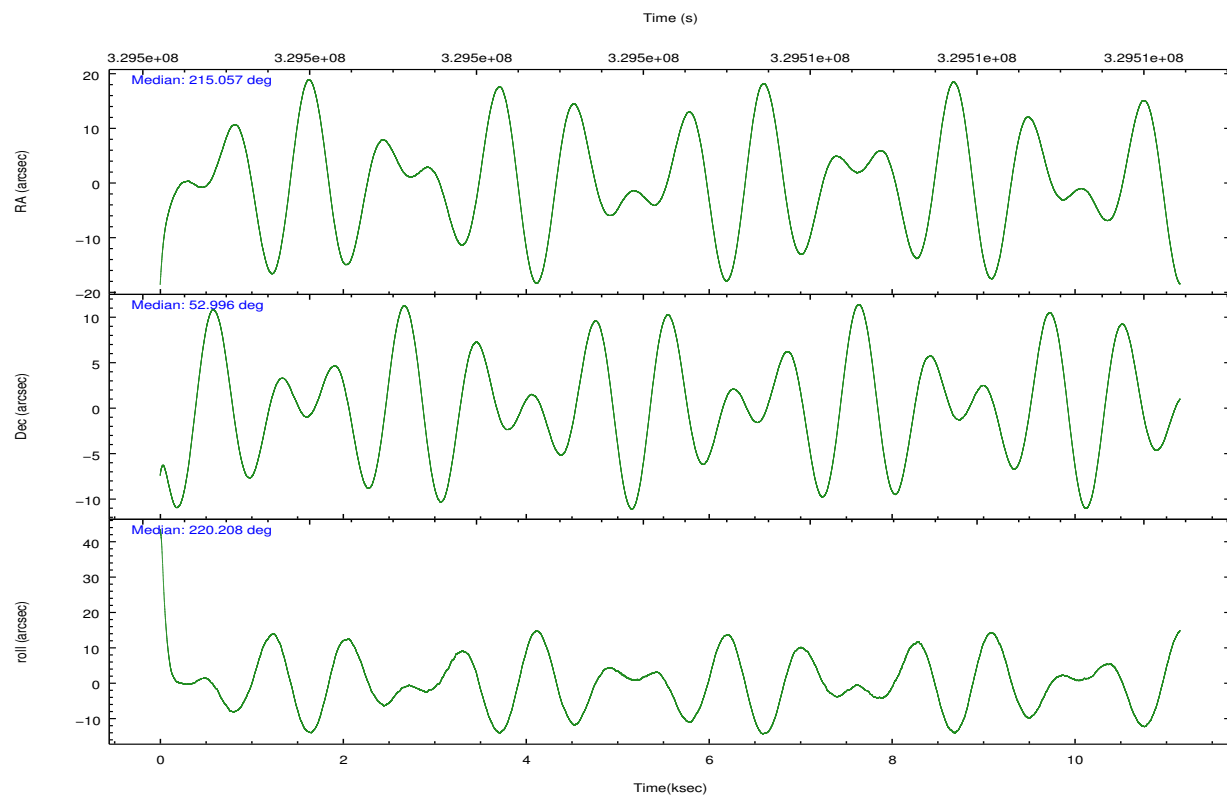
	ccd 0	ccd 1	ccd 2	ccd 3	ccd 6
grade 0 events	3248	3712	3072	3204	3119
	3%	4%	3%	3%	3%
grade 1 events	39	50	28	47	37
	0%	0%	0%	0%	0%
grade 2 events	2099	2329	2179	1871	2007
	2%	2%	2%	2%	2%
grade 3 events	1010	1132	932	1000	1041
	1%	1%	1%	1%	1%
grade 4 events	892	1030	993	959	1043
	1%	1%	1%	1%	1%
grade 5 events	3190	3589	2987	3759	3654
	3%	4%	3%	4%	4%
grade 6 events	1752	2166	1723	1764	2027
	2%	2%	1%	2%	2%
grade 7 events	73159	71739	80579	75396	75748
	85%	83%	87%	85%	85%

2.2 Compared Parameters

Parameter	Planned	Actual	Parameter	Planned	Actual
Instrument	ACIS	ACIS	Obspar format version number	7	7
Detector	ACIS-01236	ACIS-01236	Obspar file type	PREDICTED	ACTUAL
Grating	NONE	NONE	Obspar update status	NONE	UPDATED
Data mode	VFAINT	VFAINT	CCD I0 on	Y	Y
Observation mode	POINTING	POINTING	CCD I1 on	Y	Y
[deg] Pointing RA	215.072665	215.0573587586092	CCD I2 on	Y	Y
[deg] Pointing Dec	53.021792	52.99583187172998	CCD I3 on	Y	Y
[deg] Pointing Roll	219.993539	220.2144868302522	CCD S0 on	N	N
[deg] Roll angle	50.000000	50.000000	CCD S1 on	N	N
[deg] Roll tolerance	10.000000	10.000000	CCD S2 on	O1	Y
Roll constraint allows 180D rotation	Y	Y	CCD S3 on	N	N
[mm] SIM focus pos	-0.782348	-0.7809083437167272	CCD S4 on	N	N
[mm] SIM defocus	0	0.001439871863259334	CCD S5 on	N	N
[mm] SIM translation stage pos	-233.592463	-233.5874344608287	Number of optional ACIS chips dropped	0	0
[mm] SIM translation stage offset	0	-0.005018542100998502	On-chip summing requested	N	N
[s] Observation start time (MET)	329498900.184000	329497883.05705	Subarray requested	NONE	NONE
Observation start date	2008-06-10T15:27:15	2008-06-10T15:11:23	Alternating exposures requested	N	N
[s] Observation end time (MET)	329509900.184000	329510553.08267	[s] Primary exposure time	0.000000	3.1
Observation end date	2008-06-10T18:30:35	2008-06-10T18:42:33			
Read mode	TIMED	TIMED			

2.3 Aspect



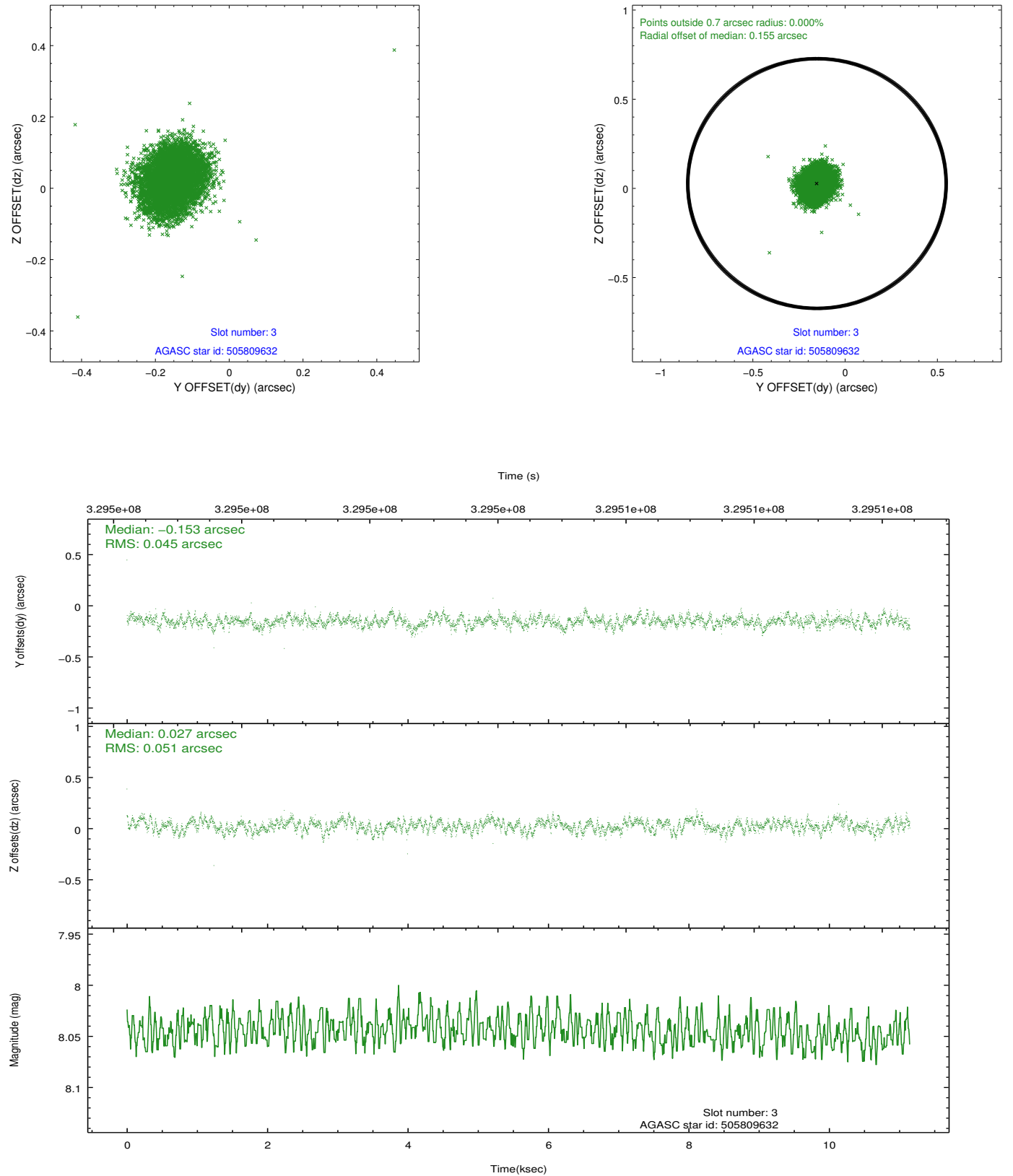


Slot Statistics

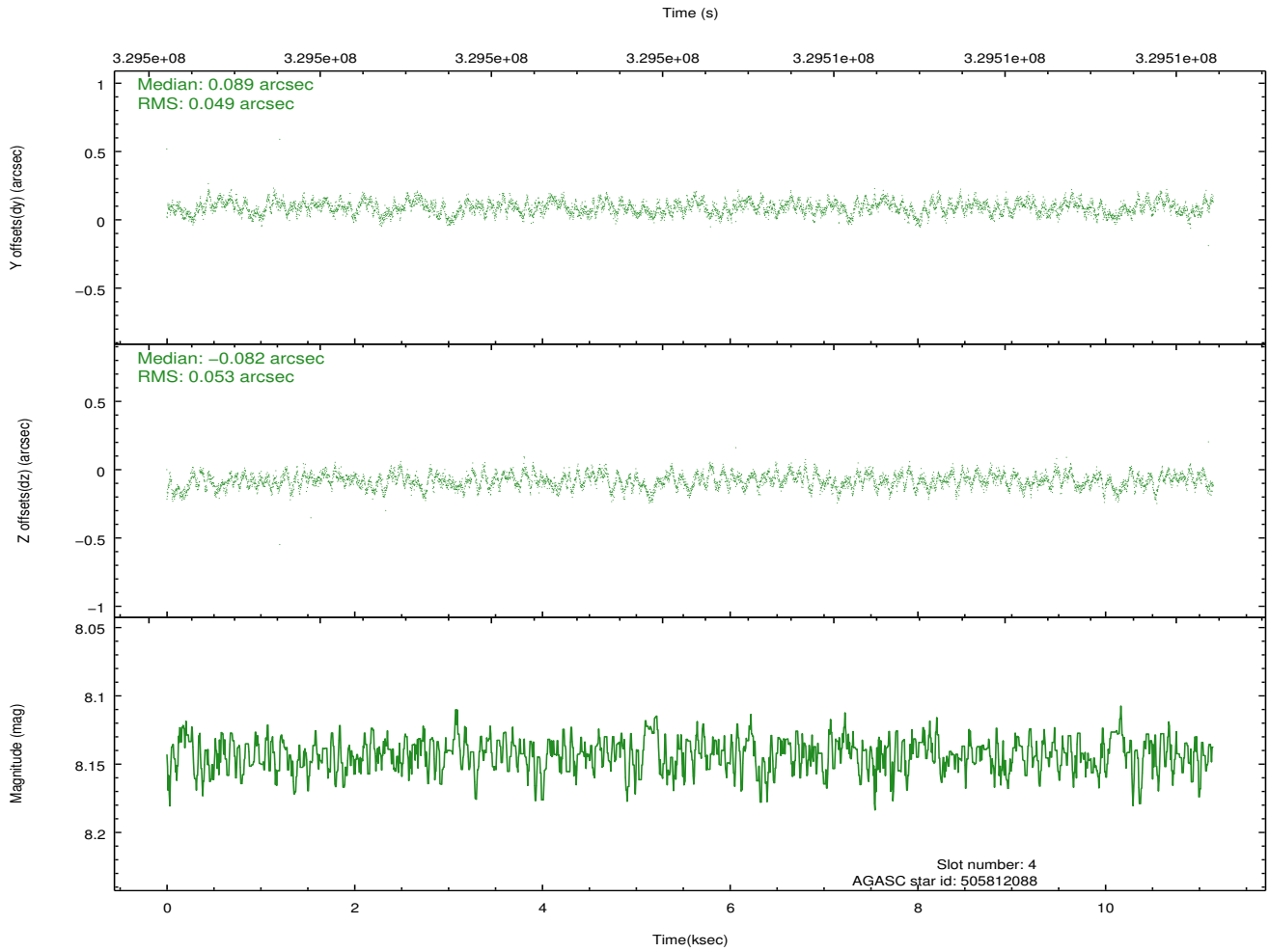
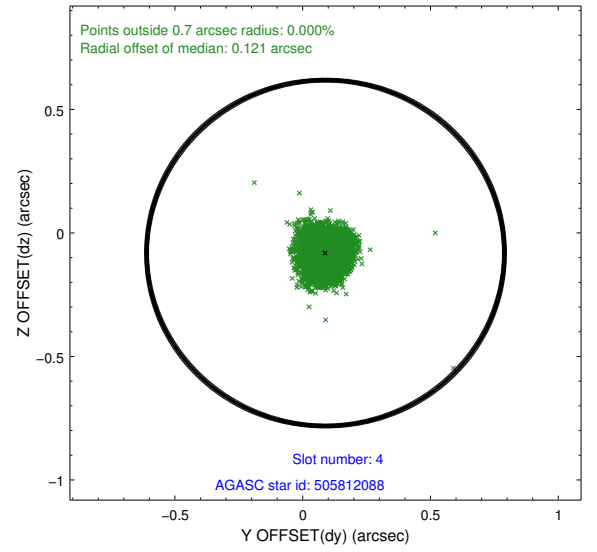
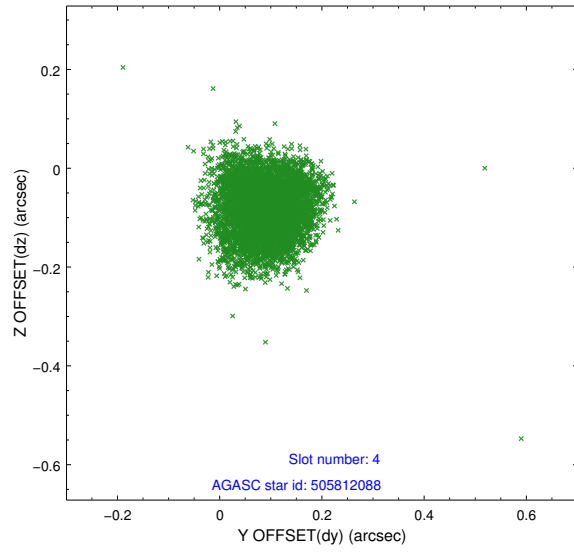
slot	status	id	mag	n_pts	med_dy	med_dz	dr1	dr2	ra	dec	mean_y	mean_z
0	FID	ACIS-I-1	7.02	2720	0.004	0.029	0.007	0.013	0.000000	0.000000	927.40	-837.66
1	FID	ACIS-I-5	7.00	2720	-0.170	0.025	0.008	0.015	0.000000	0.000000	-1820.65	1059.56
2	FID	ACIS-I-6	7.01	2720	0.075	0.017	0.006	0.010	0.000000	0.000000	392.48	1704.60
3	GUIDE	505809632	8.04	5437	-0.153	0.027	0.073	0.113	215.499426	53.521185	-1856.91	-792.56
4	GUIDE	505812088	8.14	5438	0.089	-0.082	0.078	0.122	214.186617	53.263562	894.80	-1902.16
5	GUIDE	505812376	7.66	5437	0.124	-0.150	0.055	0.086	214.039537	52.937930	1901.45	-1221.96
6	GUIDE	505815928	8.32	5438	-0.149	0.047	0.053	0.088	216.234742	53.074559	-2060.45	1453.78
7	GUIDE	455871352	8.10	5439	0.090	0.159	0.060	0.096	215.099961	52.172669	1918.14	2381.34

2.4 Star Slots

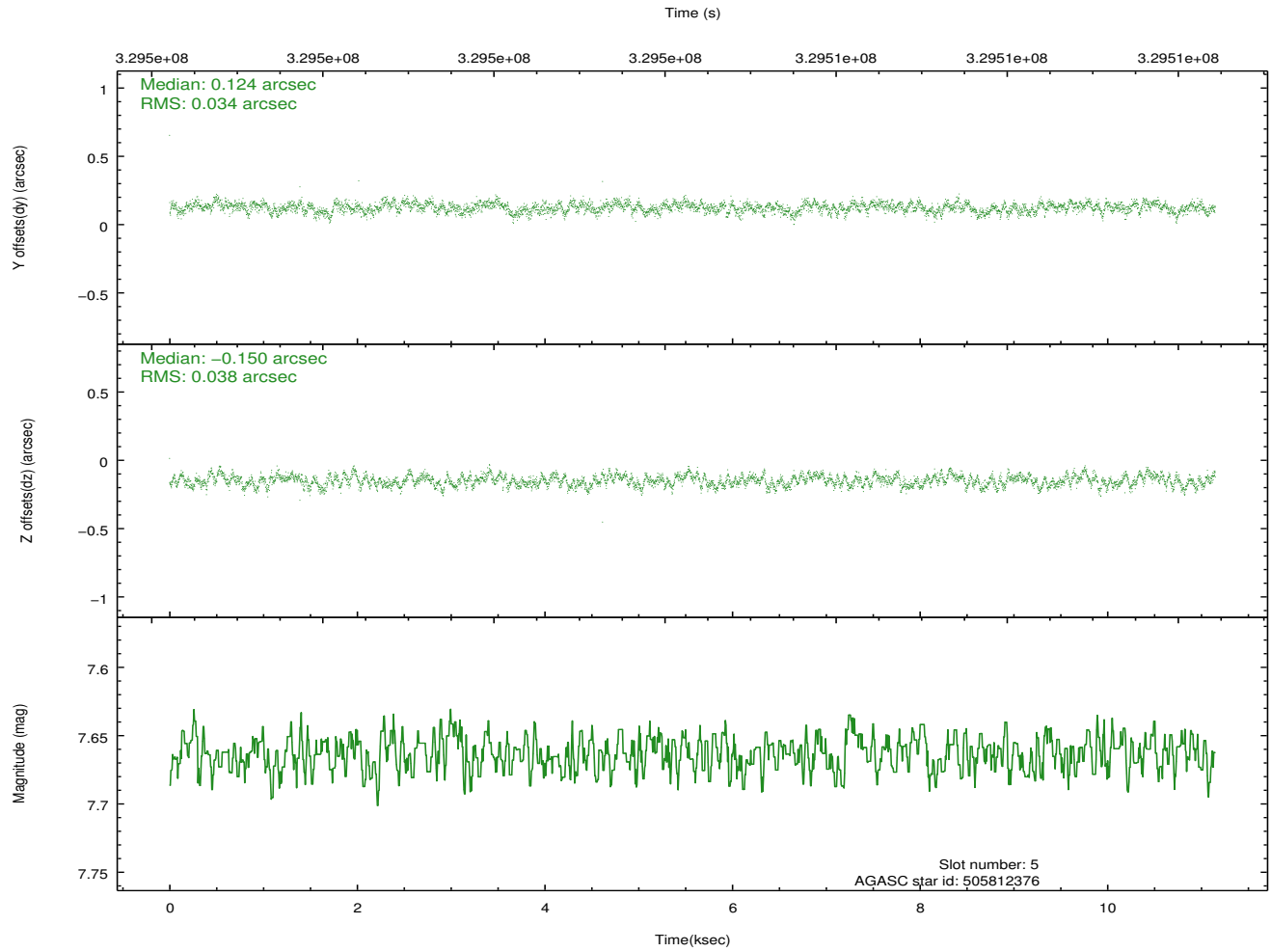
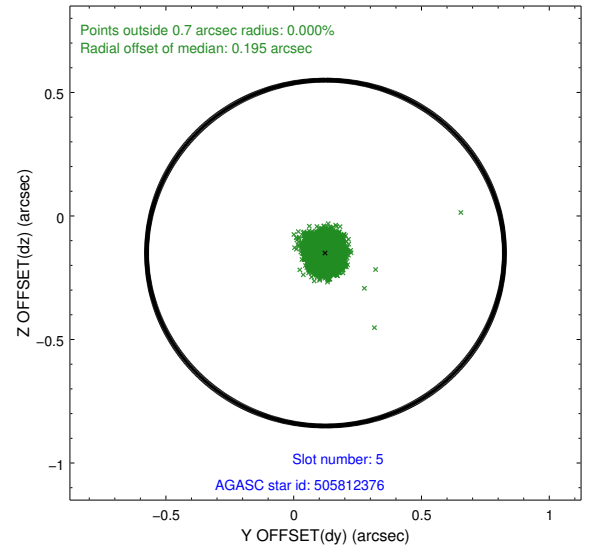
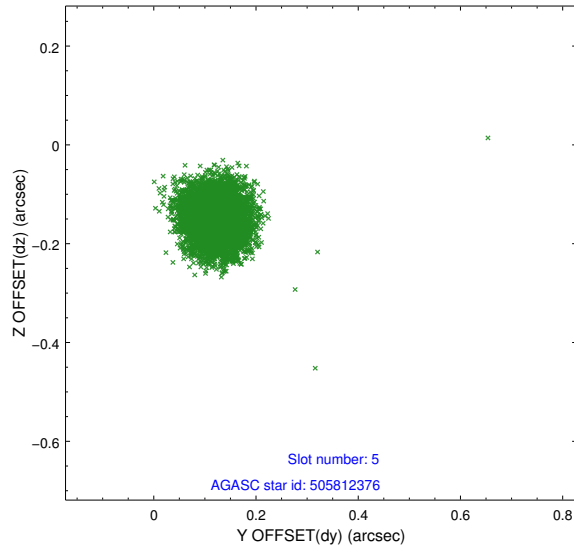
2.4.1 Slot 3



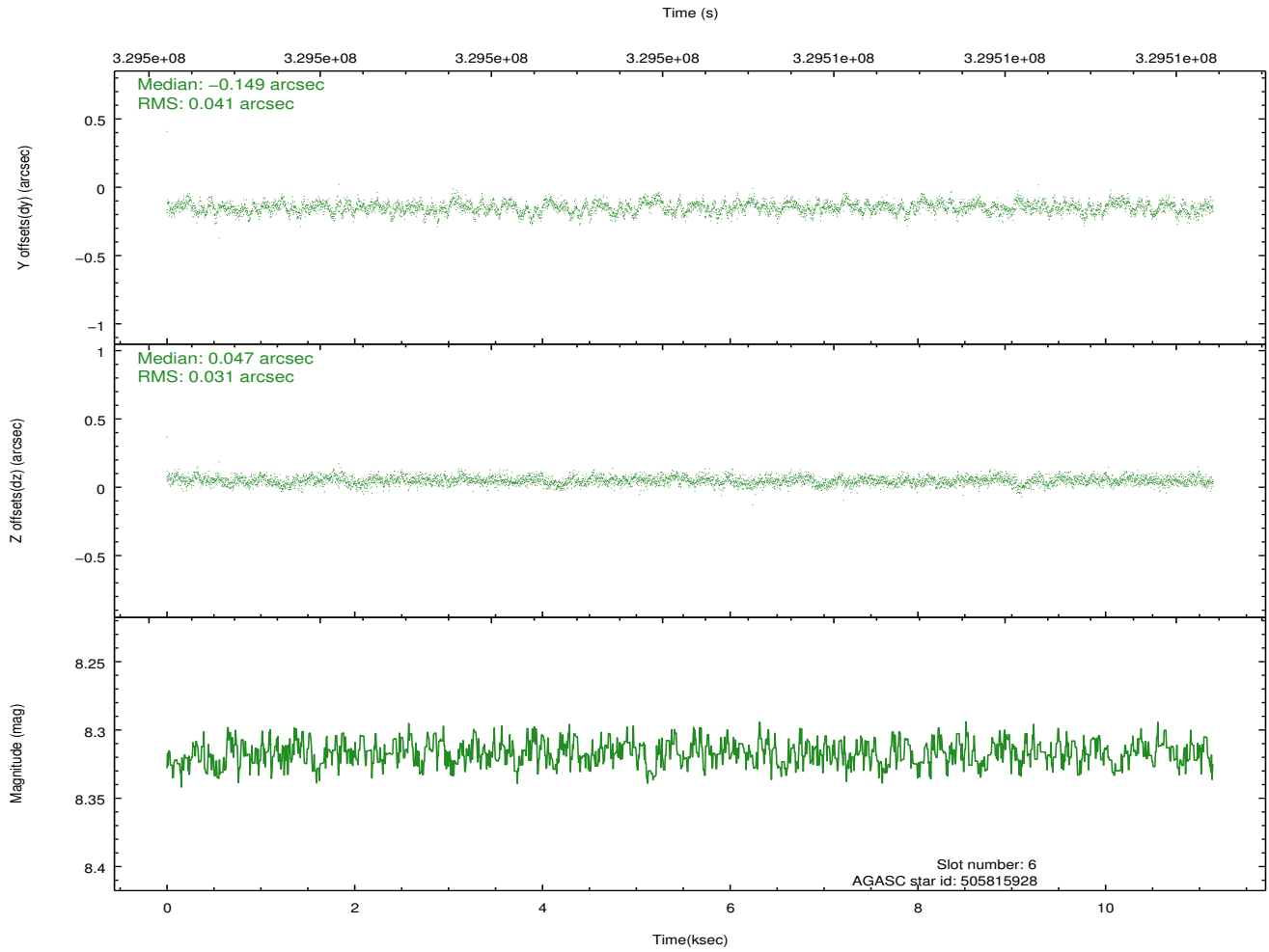
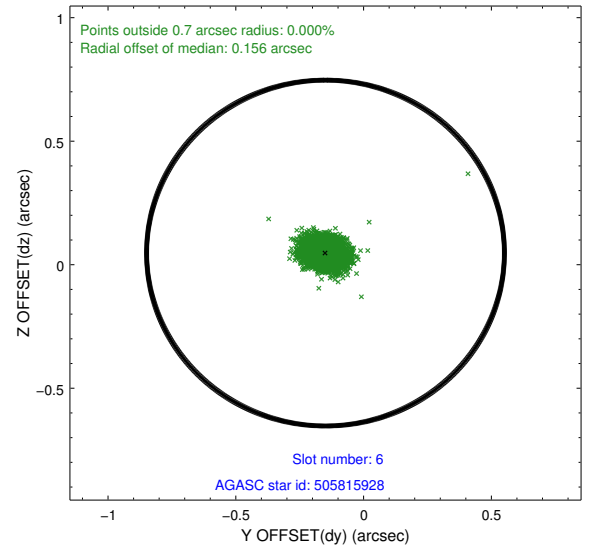
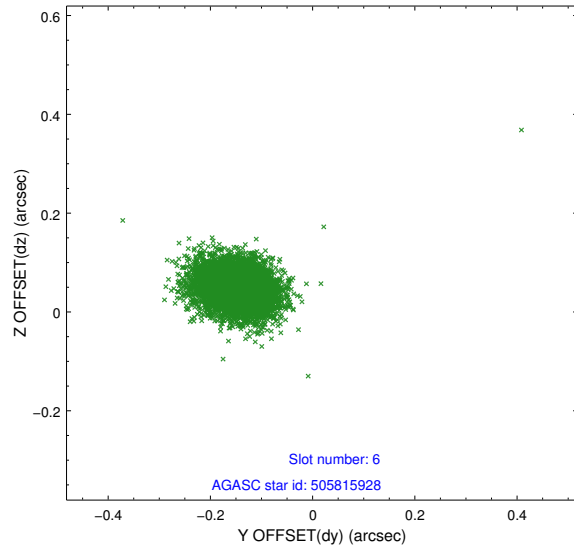
2.4.2 Slot 4



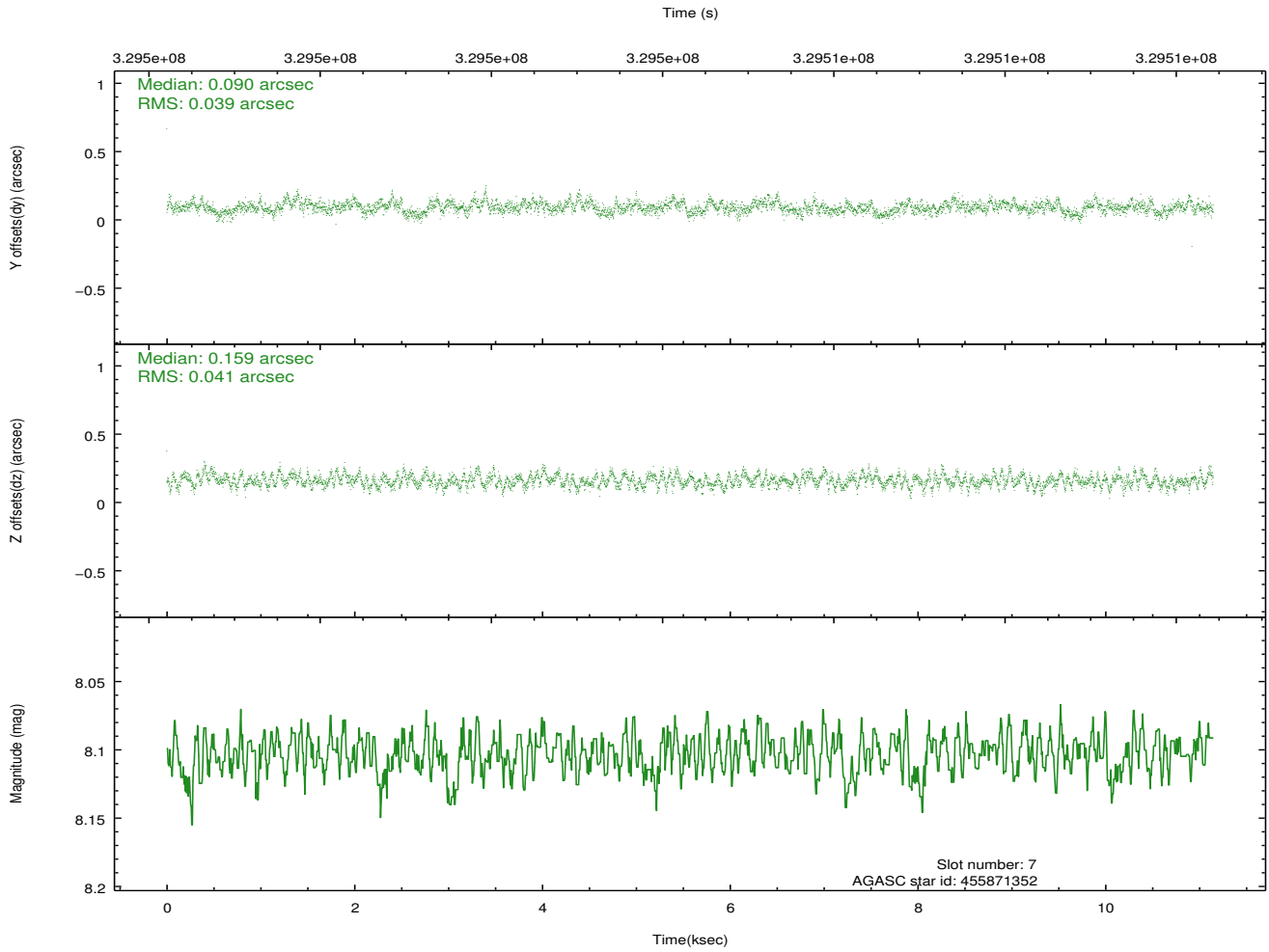
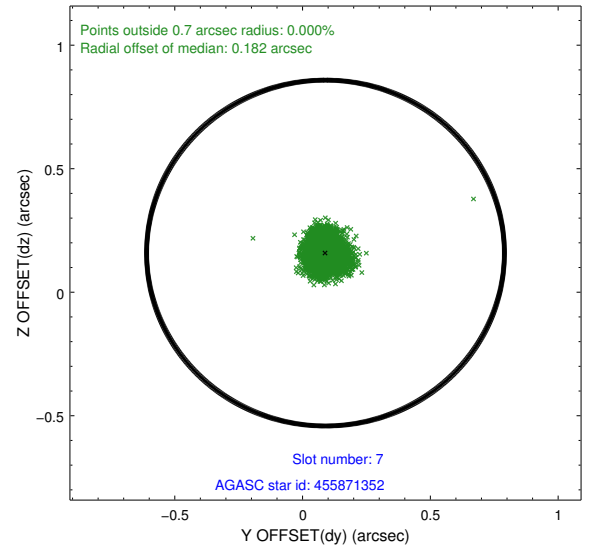
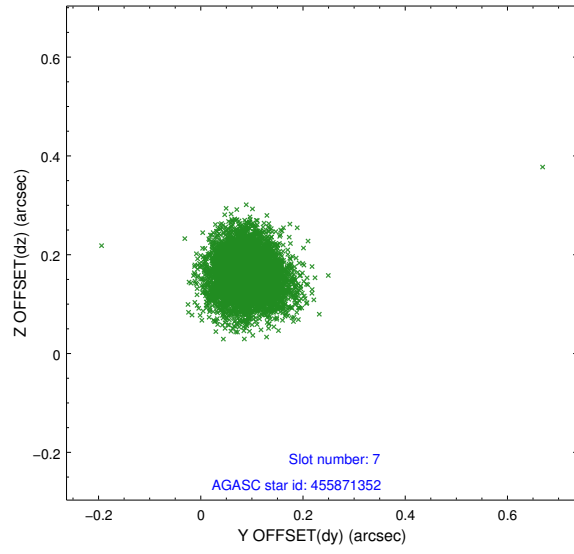
2.4.3 Slot 5



2.4.4 Slot 6

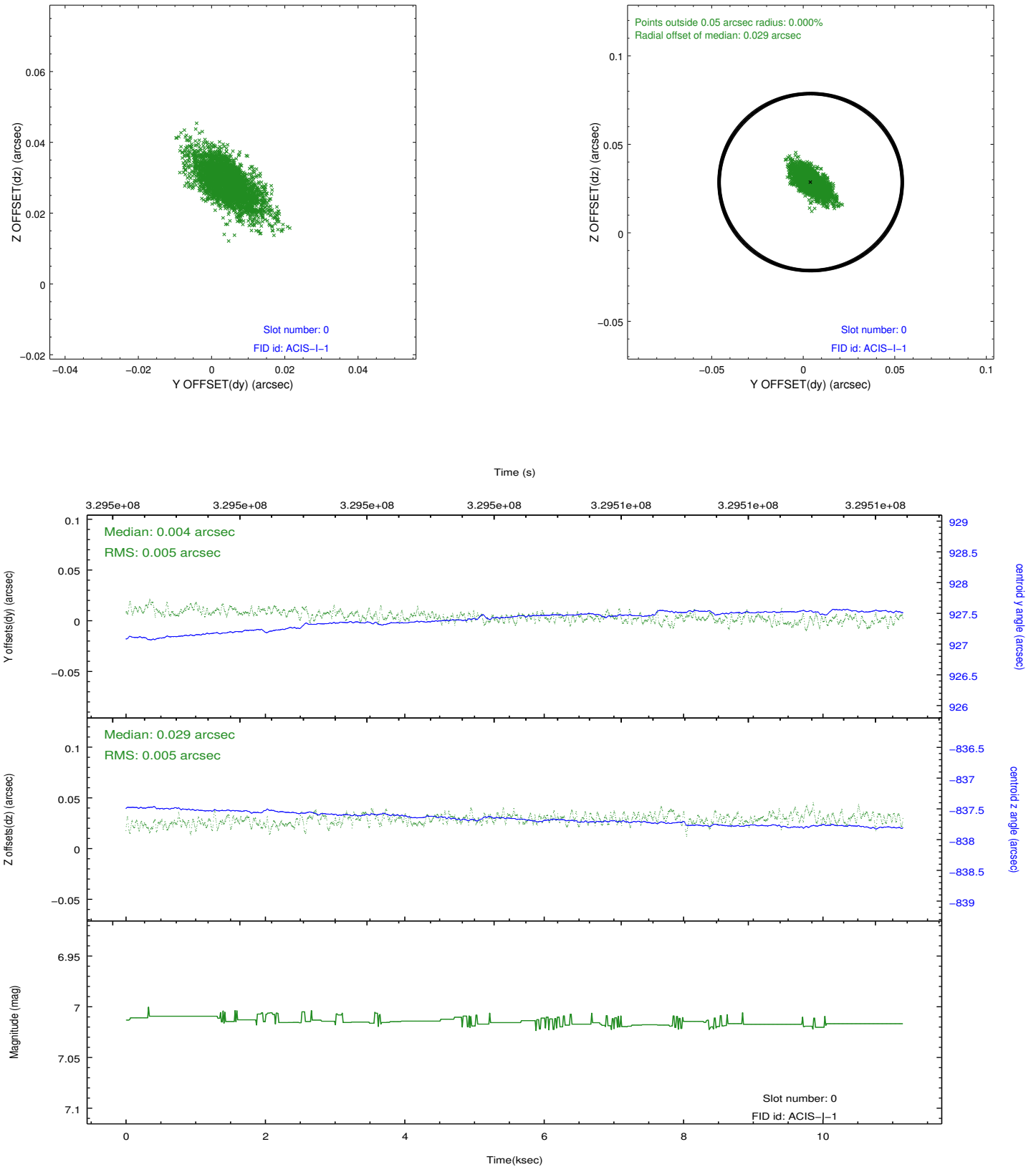


2.4.5 Slot 7

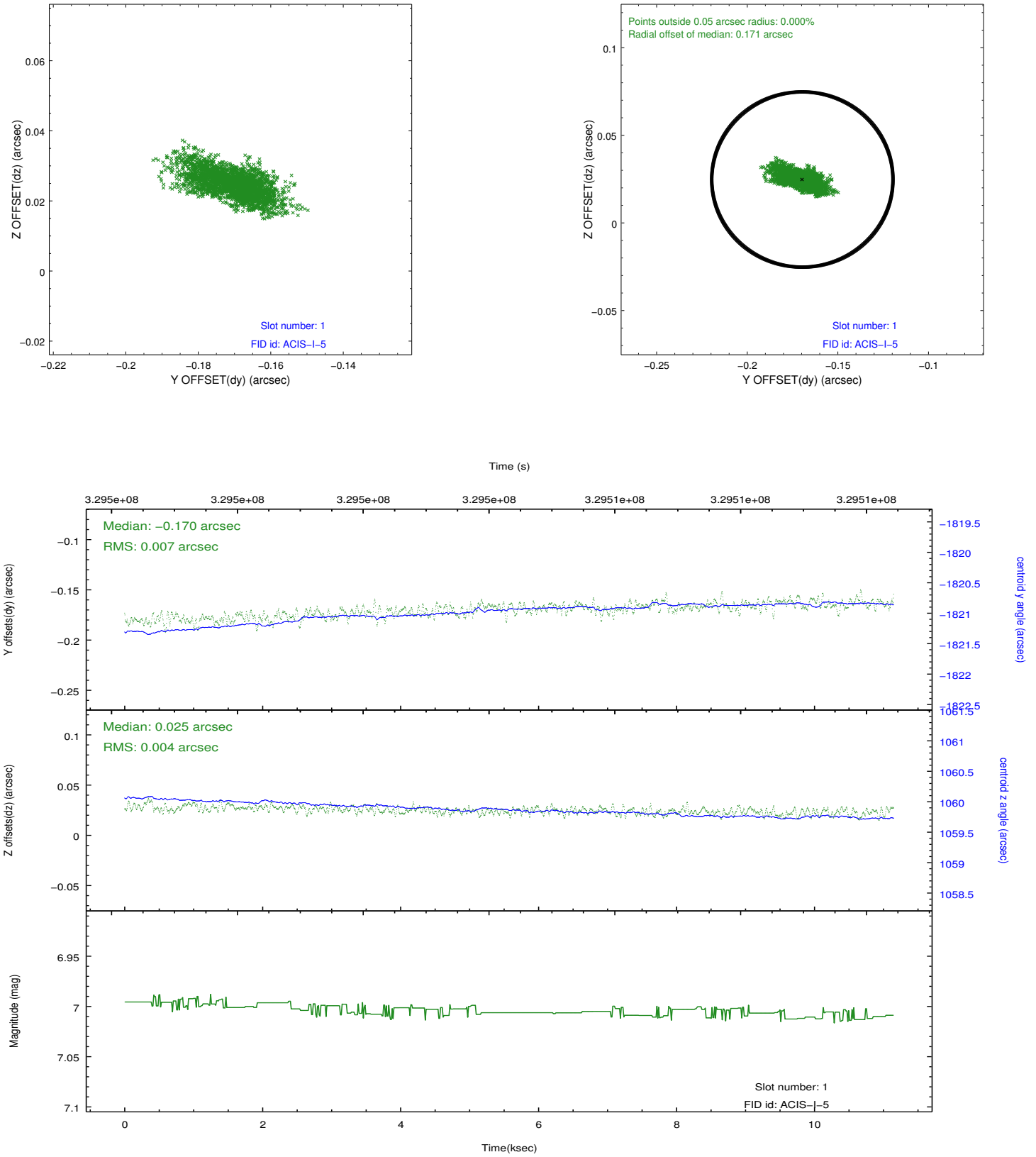


2.5 FID Slots

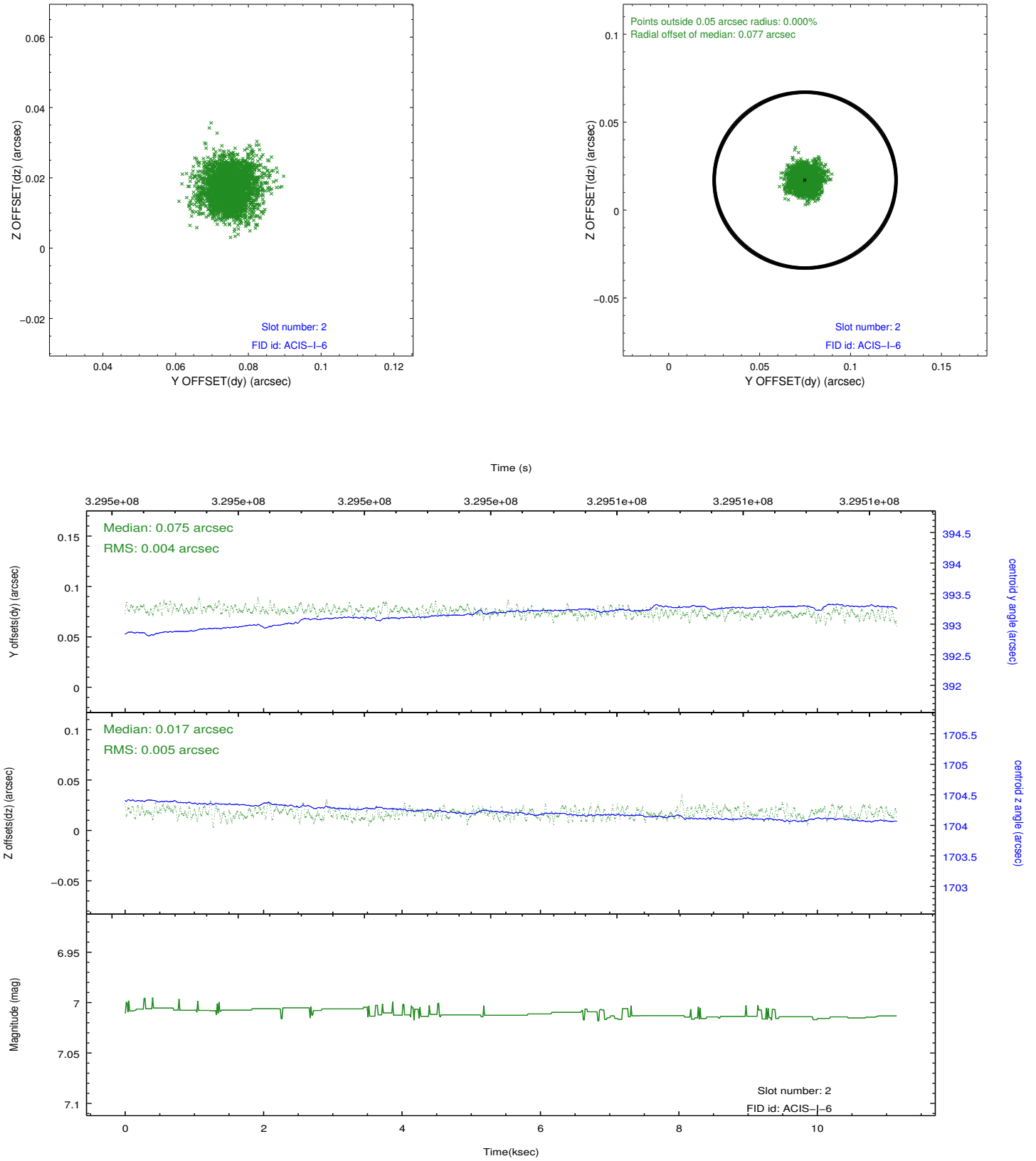
2.5.1 Slot 0



2.5.2 Slot 1



2.5.3 Slot 2



A Summary

A.1 Status

V&V Scientist	Beth Sundheim
V&V Date (YYYY-MM-DD)	2012.05.22
V&V Edition	1
V&V Disposition and Status	OK
V&V Charge Time	11.141359

A.2 Comments

Joint proposal with Spitzer.

Roll preference met.