

V&V Reference Report

L2 ASCDS Version : 8.4.4

Observation 9270 - L2 Version 2
Chandra X-Ray Center

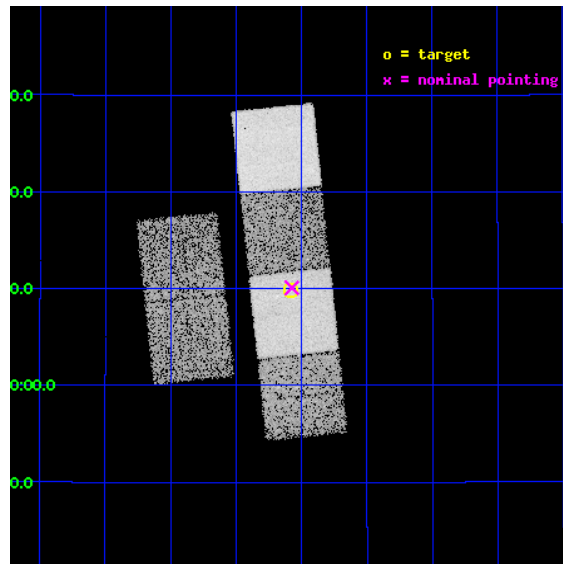
L2 Processing Date : May 7 2012

Contents

1	Front	2
2	OBI	3
2.1	OBI	3
2.1.1	Images	3
2.1.2	Bias	3
2.1.3	Parameters	4
2.1.4	Events	4
2.2	Compared Parameters	5
2.3	Aspect	6
2.4	Star Slots	9
2.4.1	Slot 3	9
2.4.2	Slot 4	10
2.4.3	Slot 5	11
2.4.4	Slot 6	12
2.4.5	Slot 7	13
2.5	FID Slots	14
2.5.1	Slot 0	14
2.5.2	Slot 1	15
2.5.3	Slot 2	16
A	Summary	17
A.1	Status	17
A.2	Comments	17

1 Front

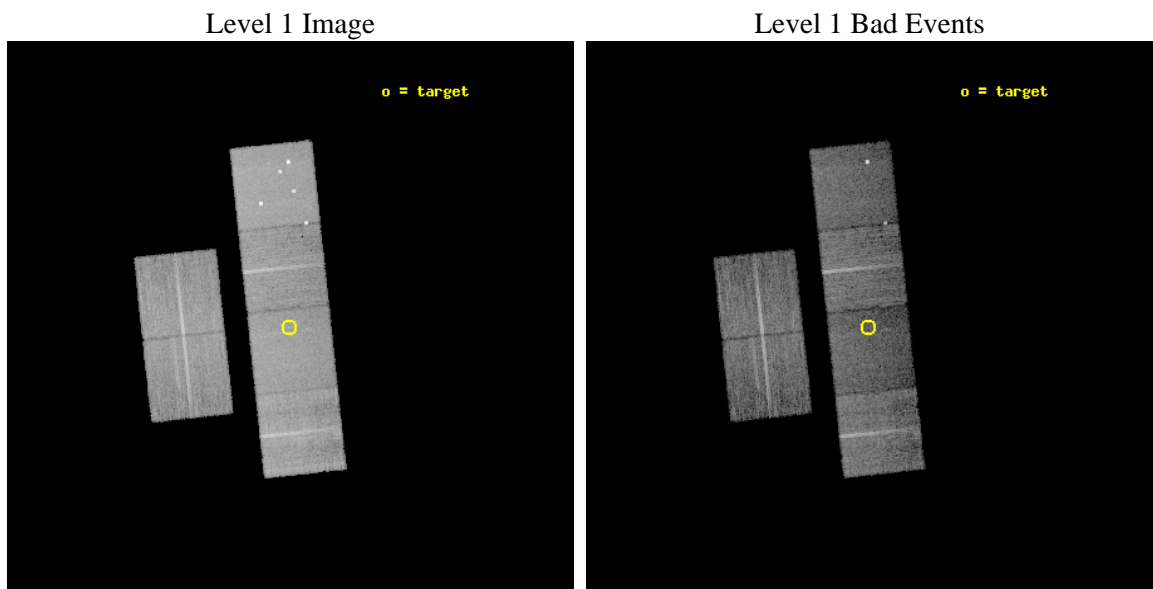
seq_num	701711	Sequence number
obs_id	9270	Observation id
title	A Chandra Survey of Nearby X-shaped Radio Galaxies	Proposal title
observer	Prof Christopher Reynolds	Principal investigator
object	J0805+2458 (3C192)	Source name
dtcycle	0	
cycle	P	events from which exps? Prim/Second/Both
ra_targ	121.395833	Observer's specified target RA [deg]
dec_targ	24.163889	Observer's specified target Dec [deg]
ra_nom	121.39347391715	Nominal RA [deg]
dec_nom	24.168280429299	Nominal Dec [deg]
roll_nom	83.906128366412	Nominal Roll [deg]
revision	2	Processing version of data
ontime	10147.199962258	Sum of GTIs [s]
livetime	10018.710006426	Livetime [s]
ontime2	10147.199962258	Sum of GTIs [s]
ontime3	10147.199962258	Sum of GTIs [s]
ontime5	10147.199962258	Sum of GTIs [s]
ontime6	10147.199962258	Sum of GTIs [s]
ontime7	10147.199962258	Sum of GTIs [s]
ontime8	10147.199962258	Sum of GTIs [s]
l2events	121761	Number of level 2 events



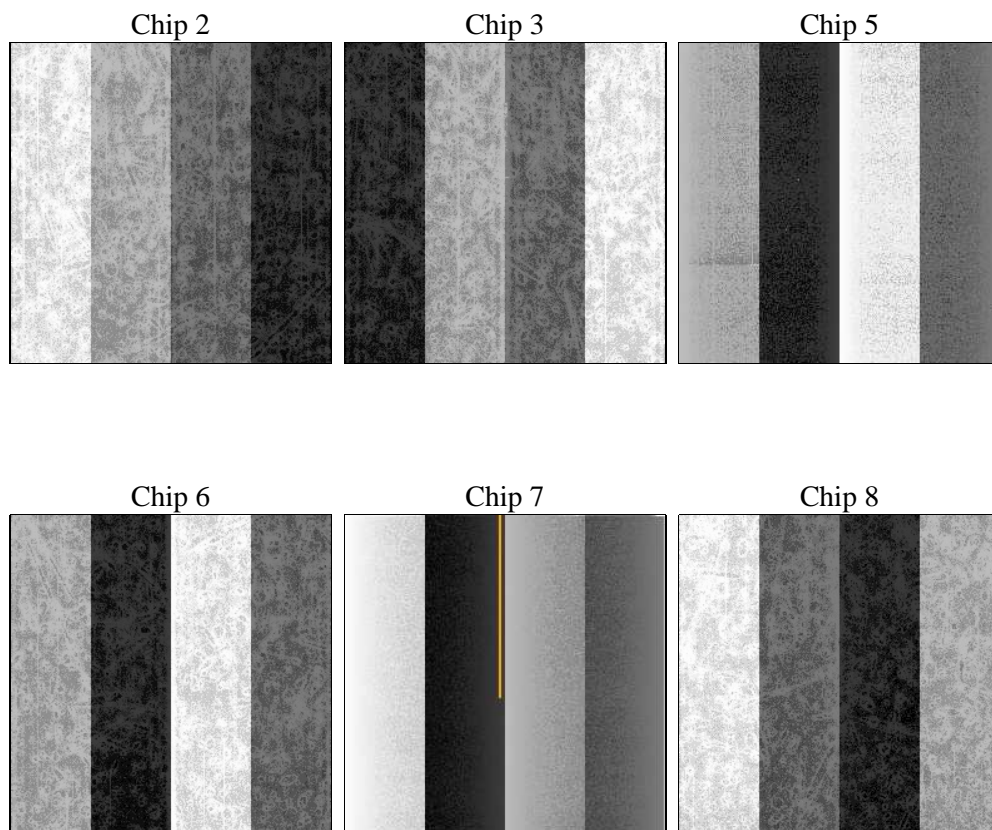
2 OBI

2.1 OBI

2.1.1 Images



2.1.2 Bias



2.1.3 Parameters

obi_num	0	Obi number	sched_exp_time	10000.000000	[s] Scheduled observation exposure time
ascdsver	8.4.4	Processing system revision	ontime	10147.199962258	Sum of GTIs [s]
caldsver	4.4.9	 	ontime2	10147.199962258	Sum of GTIs [s]
date	2012-05-07T03:05:57	Date and time of file creation	ontime3	10147.199962258	Sum of GTIs [s]
revision	2	Processing version of data	ontime5	10147.199962258	Sum of GTIs [s]
			ontime6	10147.199962258	Sum of GTIs [s]
			ontime7	10147.199962258	Sum of GTIs [s]
			ontime8	10147.199962258	Sum of GTIs [s]
			l1events	616535	Number of level 1 events

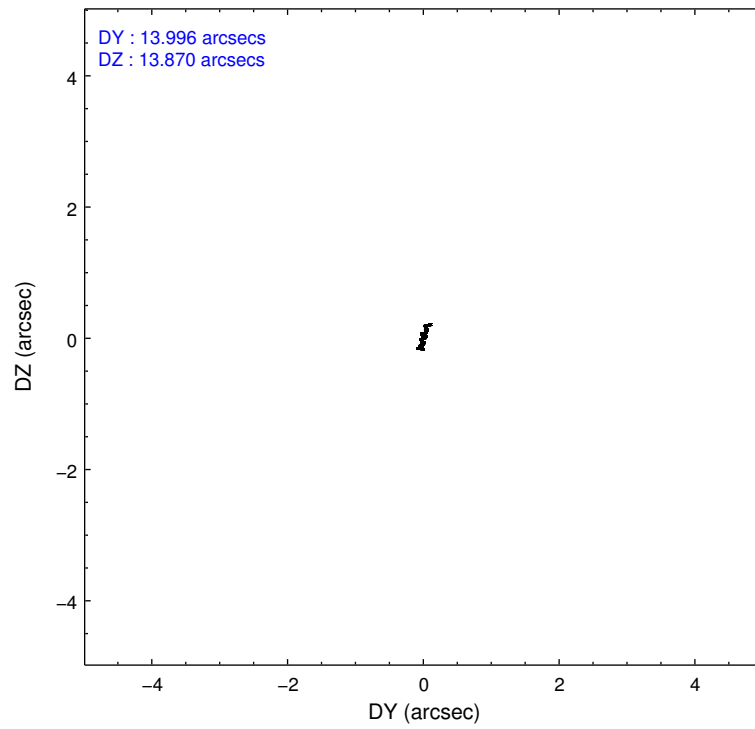
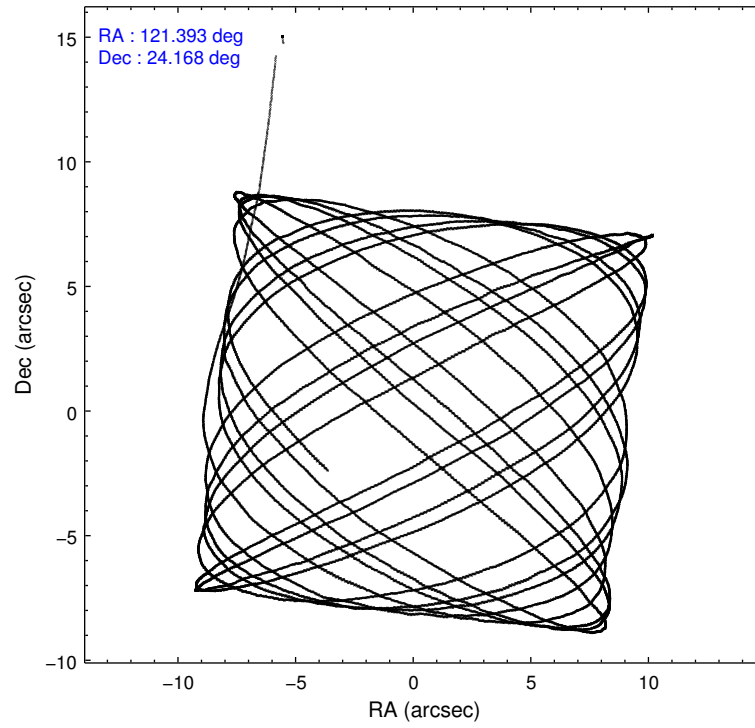
2.1.4 Events

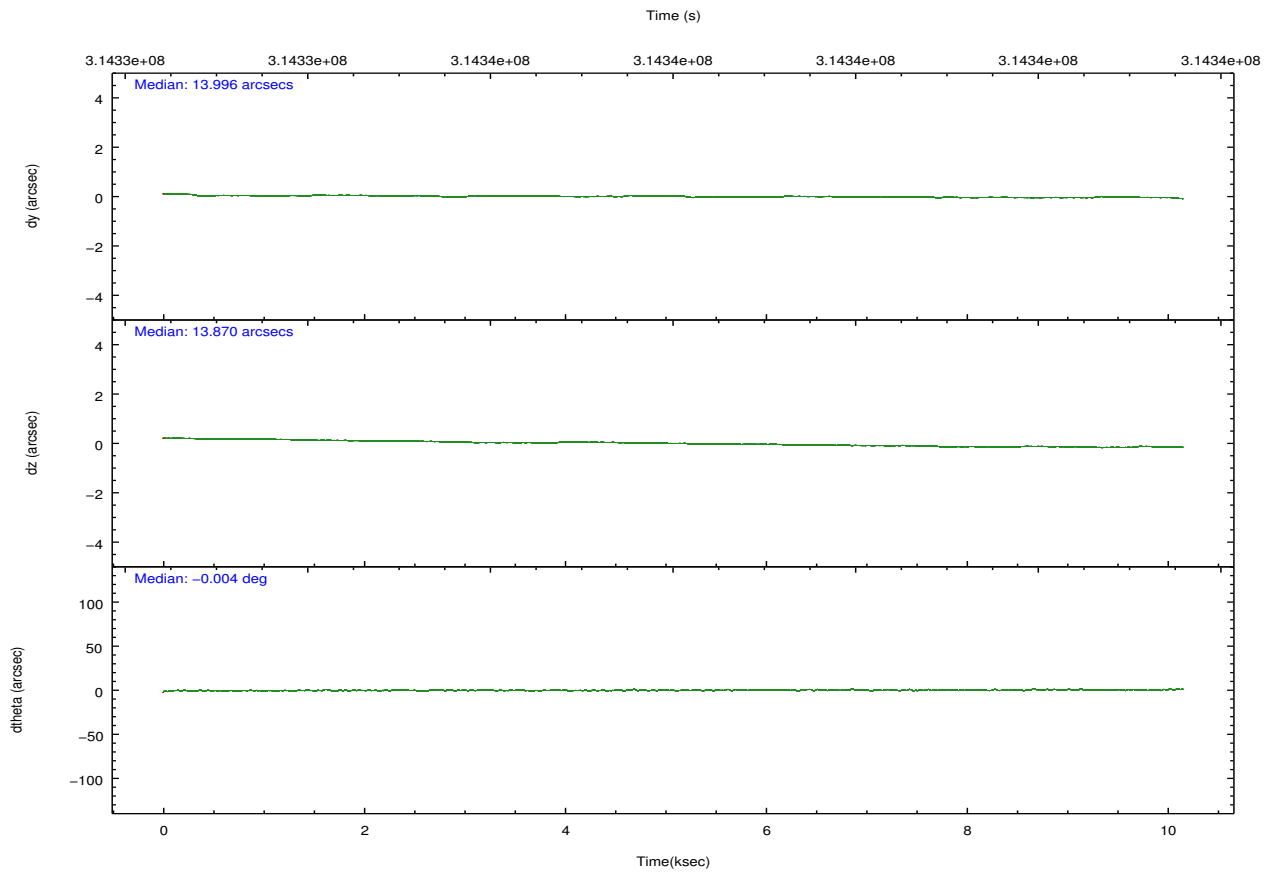
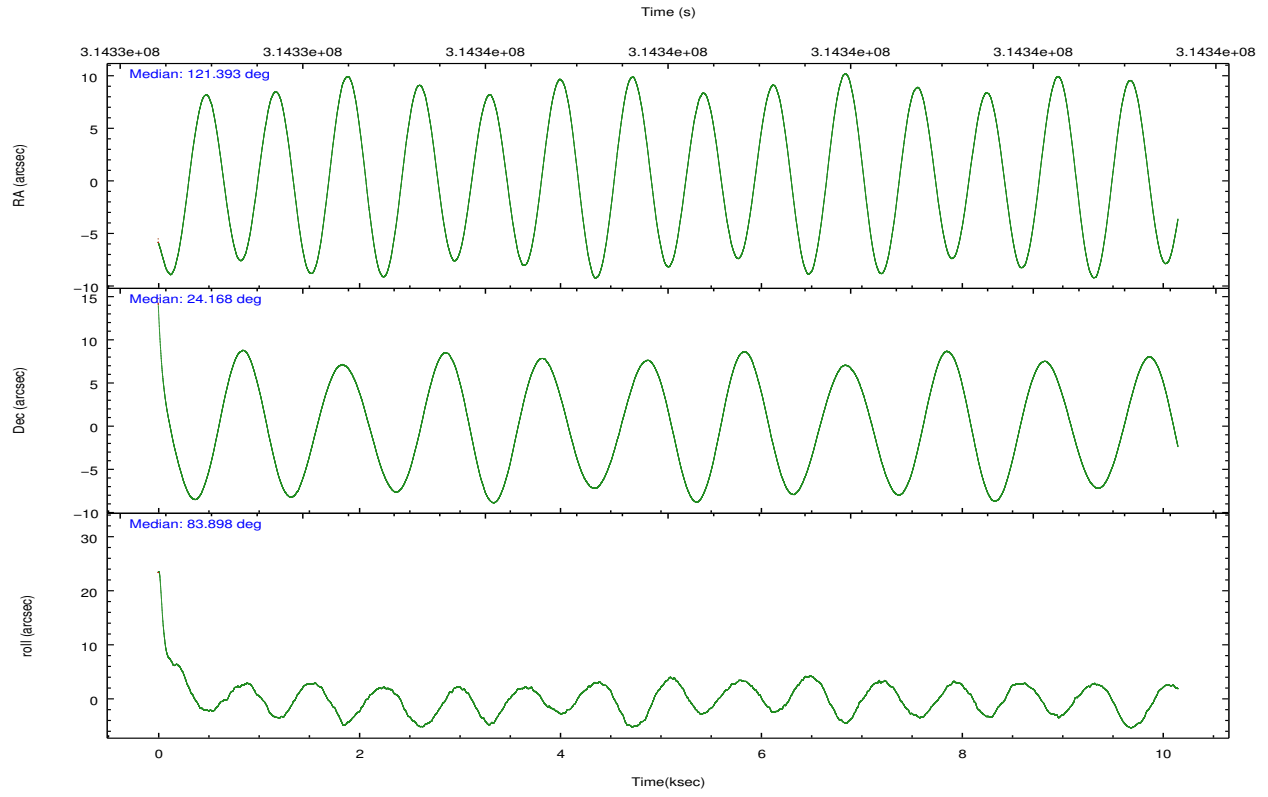
	ccd 2	ccd 3	ccd 5	ccd 6	ccd 7	ccd 8		ccd 2	ccd 3	ccd 5	ccd 6	ccd 7	ccd 8
level 1 events	94163	85204	133929	90515	100352	112372	grade 0 events	3131	2880	12095	3137	4387	7783
rejected events	86188	77860	70921	82321	58631	88250		3%	3%	9%	3%	4%	6%
rejected %	91%	91%	52%	90%	58%	78%	grade 1 events	47	36	849	43	124	75
								0%	0%	0%	0%	0%	0%
							grade 2 events	2187	1760	19015	2084	9363	6132
								2%	2%	14%	2%	9%	5%
							grade 3 events	885	944	2891	997	4266	2854
								0%	1%	2%	1%	4%	2%
							grade 4 events	969	945	2529	978	4155	2624
								1%	1%	1%	1%	4%	2%
							grade 5 events	2916	3565	10773	3628	10413	5087
								3%	4%	8%	4%	10%	4%
							grade 6 events	1655	1610	32707	1870	23962	7297
								1%	1%	24%	2%	23%	6%
							grade 7 events	82373	73464	53070	77778	43682	80520
								87%	86%	39%	85%	43%	71%

2.2 Compared Parameters

Parameter	Planned	Actual	Parameter	Planned	Actual
Instrument	ACIS	ACIS	Obspar format version number	7	7
Detector	ACIS-235678	ACIS-235678	Obspar file type	PREDICTED	ACTUAL
Grating	NONE	NONE	Obspar update status	NONE	UPDATED
Data mode	FAINT	FAINT	CCD I0 on	N	N
Observation mode	POINTING	POINTING	CCD I1 on	N	N
[deg] Pointing RA	121.406055	121.3934739171522	CCD I2 on	O2	Y
[deg] Pointing Dec	24.143416	24.16828042929943	CCD I3 on	O4	Y
[deg] Pointing Roll	83.744330	83.90612836641245	CCD S0 on	N	N
[mm] SIM focus pos	-0.684267	-0.6828225247311905	CCD S1 on	O1	Y
[mm] SIM defocus	0	0.001444936568705701	CCD S2 on	O5	Y
[mm] SIM translation stage pos	-190.132523	-190.1425803651734	CCD S3 on	Y	Y
[mm] SIM translation stage offset	0	0.01005778216563158	CCD S4 on	O3	Y
[s] Observation start time (MET)	314333075.184000	314331482.11976	CCD S5 on	N	N
Observation start date	2007-12-18T02:43:30	2007-12-18T02:18:02	Number of optional ACIS chips dropped	0	0
[s] Observation end time (MET)	314343075.184000	314343949.19537	On-chip summing requested	N	N
Observation end date	2007-12-18T05:30:10	2007-12-18T05:45:49	Subarray requested	NONE	NONE
Read mode	TIMED	TIMED	Alternating exposures requested	N	N
			[s] Primary exposure time	0.000000	3.2

2.3 Aspect



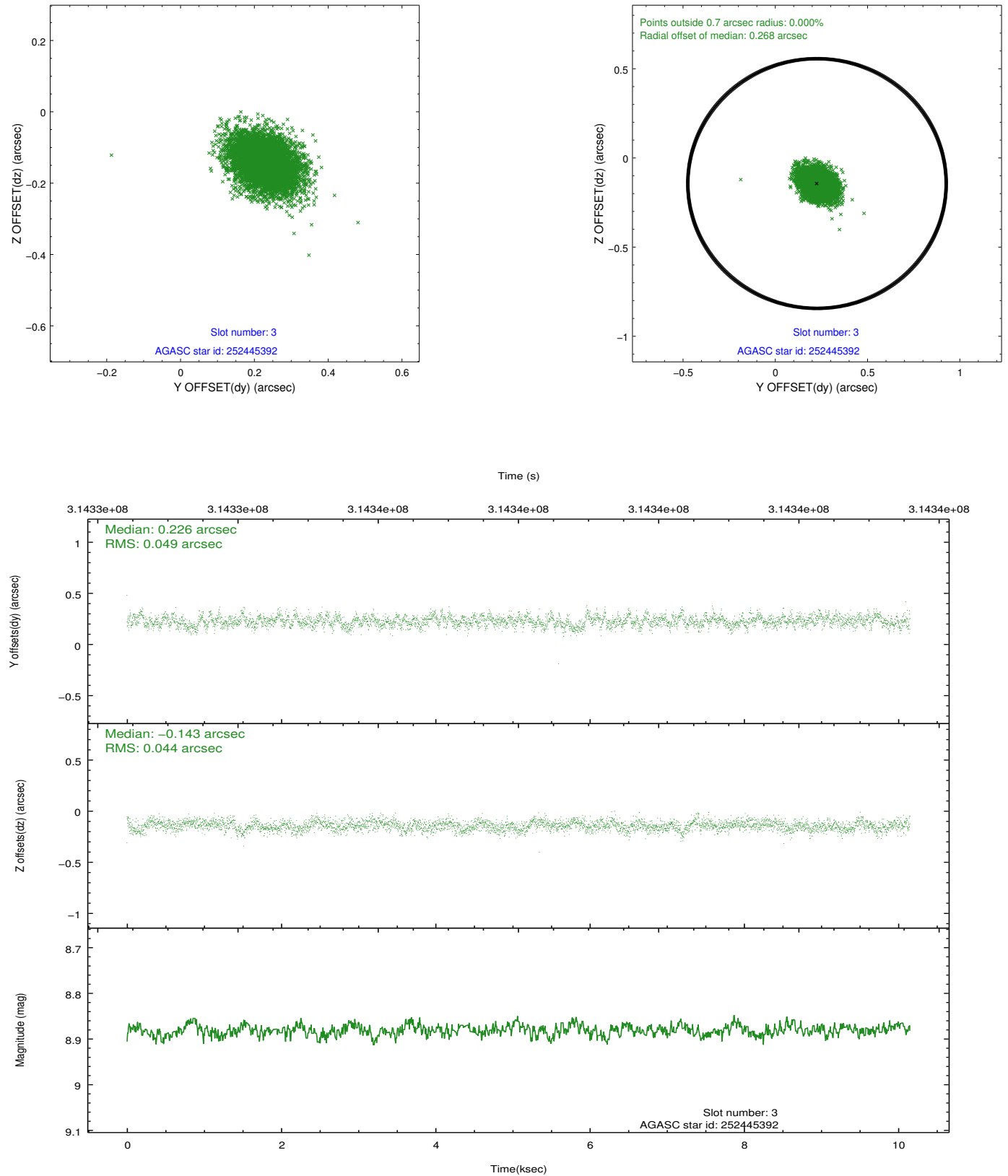


Slot Statistics

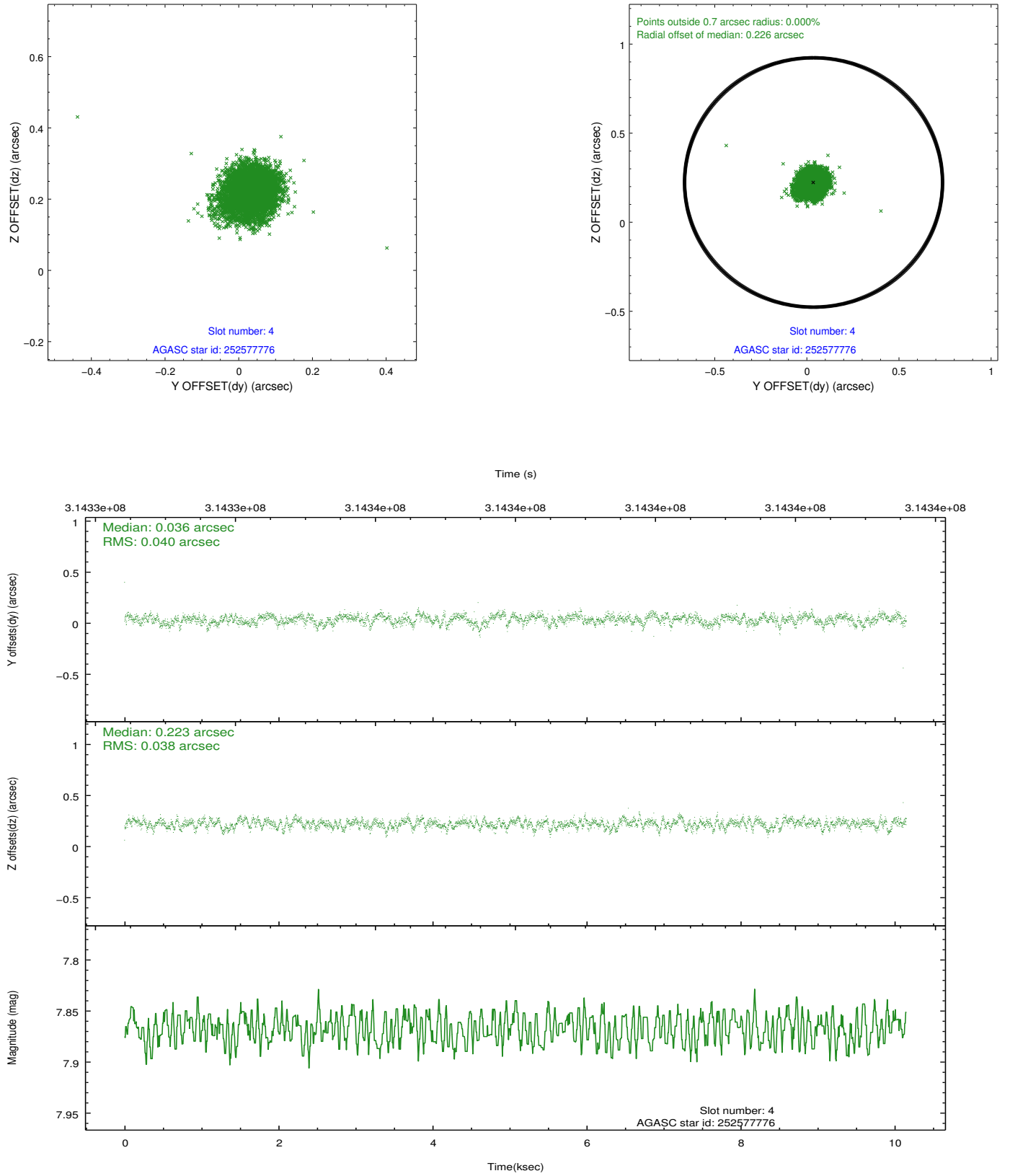
slot	status	id	mag	n_pts	med_dy	med_dz	dr1	dr2	ra	dec	mean_y	mean_z
0	FID	ACIS-S-2	7.10	2477	-0.058	-0.060	0.008	0.013	0.000000	0.000000	-767.00	-1735.22
1	FID	ACIS-S-4	7.19	2477	0.184	0.044	0.007	0.013	0.000000	0.000000	2146.28	172.82
2	FID	ACIS-S-5	7.22	2477	-0.157	0.024	0.007	0.012	0.000000	0.000000	-1819.27	167.07
3	GUIDE	252445392	8.88	4951	0.226	-0.143	0.068	0.112	120.655800	23.686797	-1897.07	2279.72
4	GUIDE	252577776	7.87	4950	0.036	0.223	0.058	0.093	121.963441	24.018102	-245.27	-1870.39
5	GUIDE	252978608	6.84	4953	-0.140	-0.154	0.069	0.102	121.037358	24.508140	1174.87	1343.35
6	GUIDE	253108456	8.88	4952	-0.068	0.129	0.078	0.130	122.025353	24.715177	2271.87	-1787.94
7	GUIDE	252445040	8.75	4952	-0.050	-0.056	0.068	0.111	120.948183	24.372625	659.39	1582.20

2.4 Star Slots

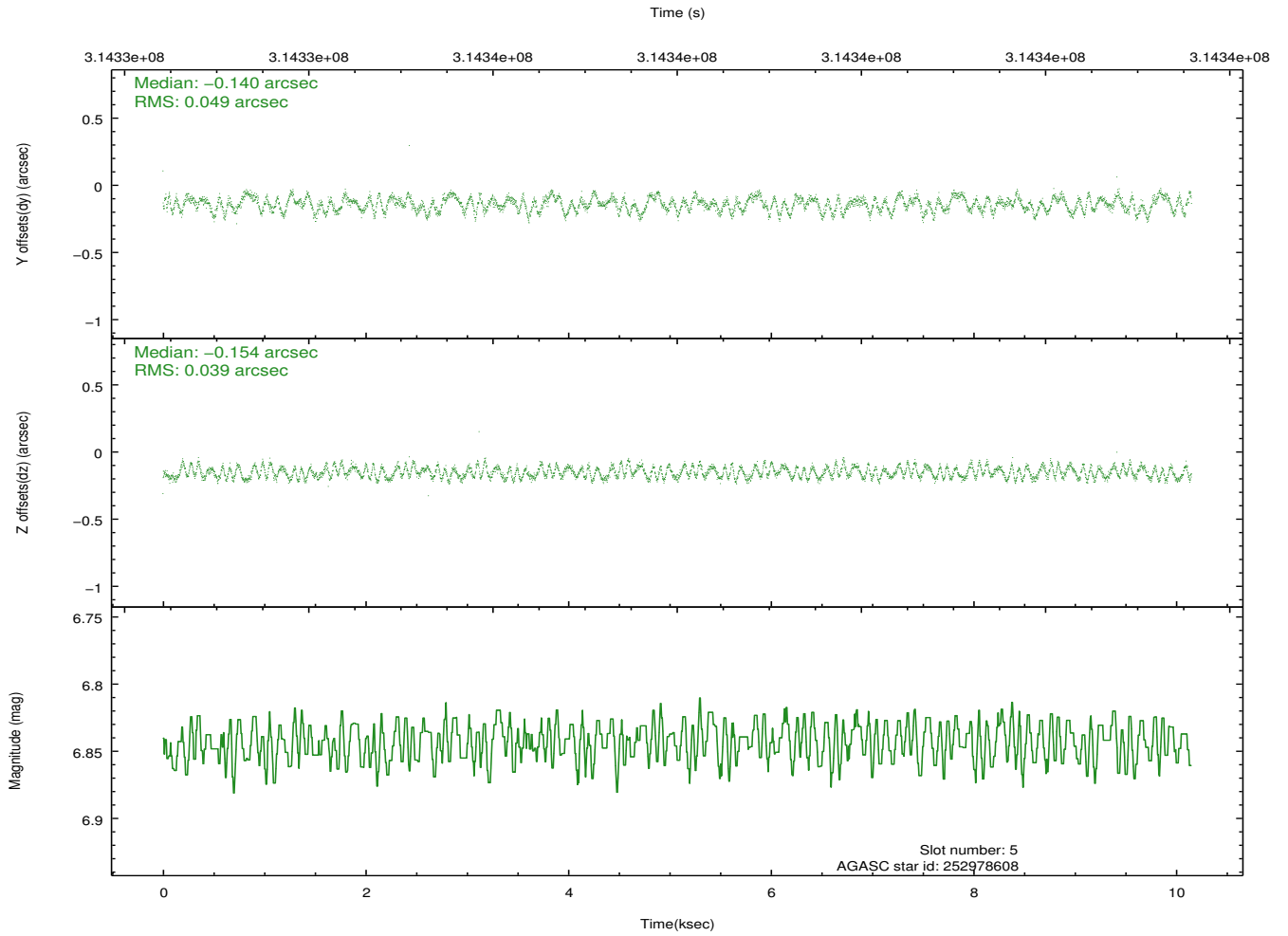
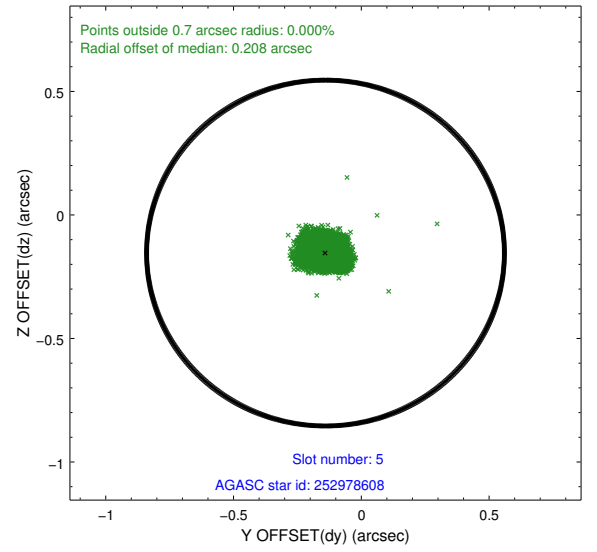
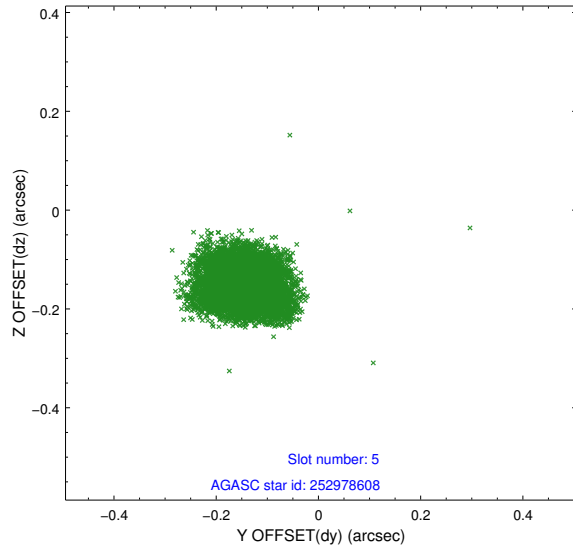
2.4.1 Slot 3



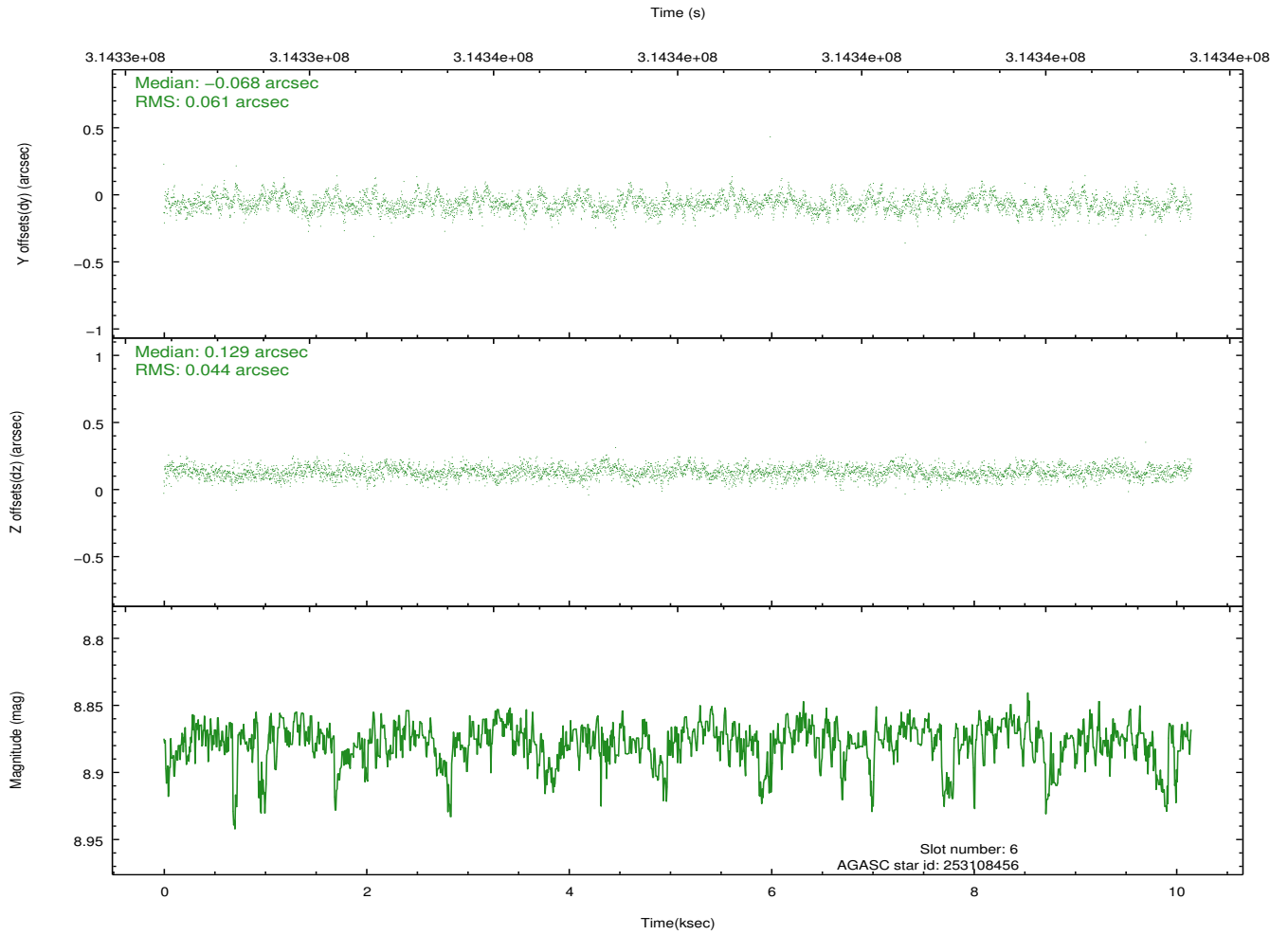
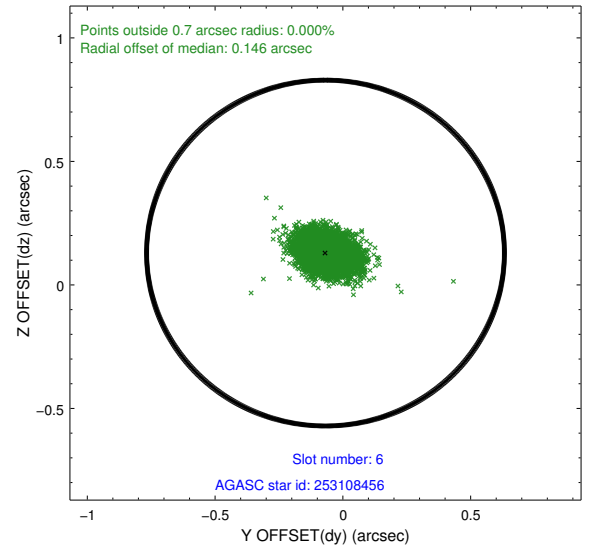
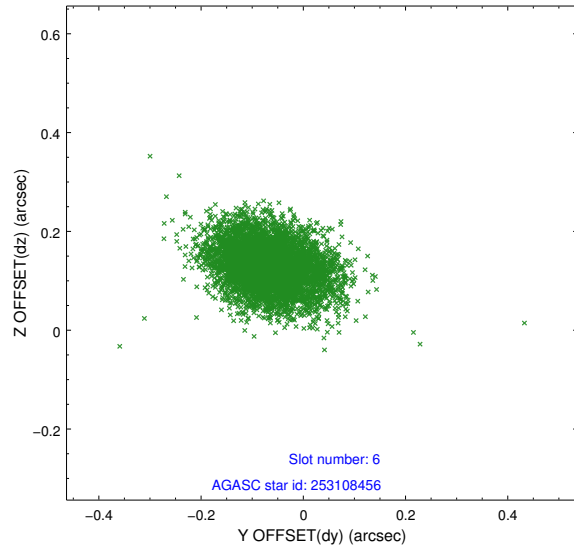
2.4.2 Slot 4



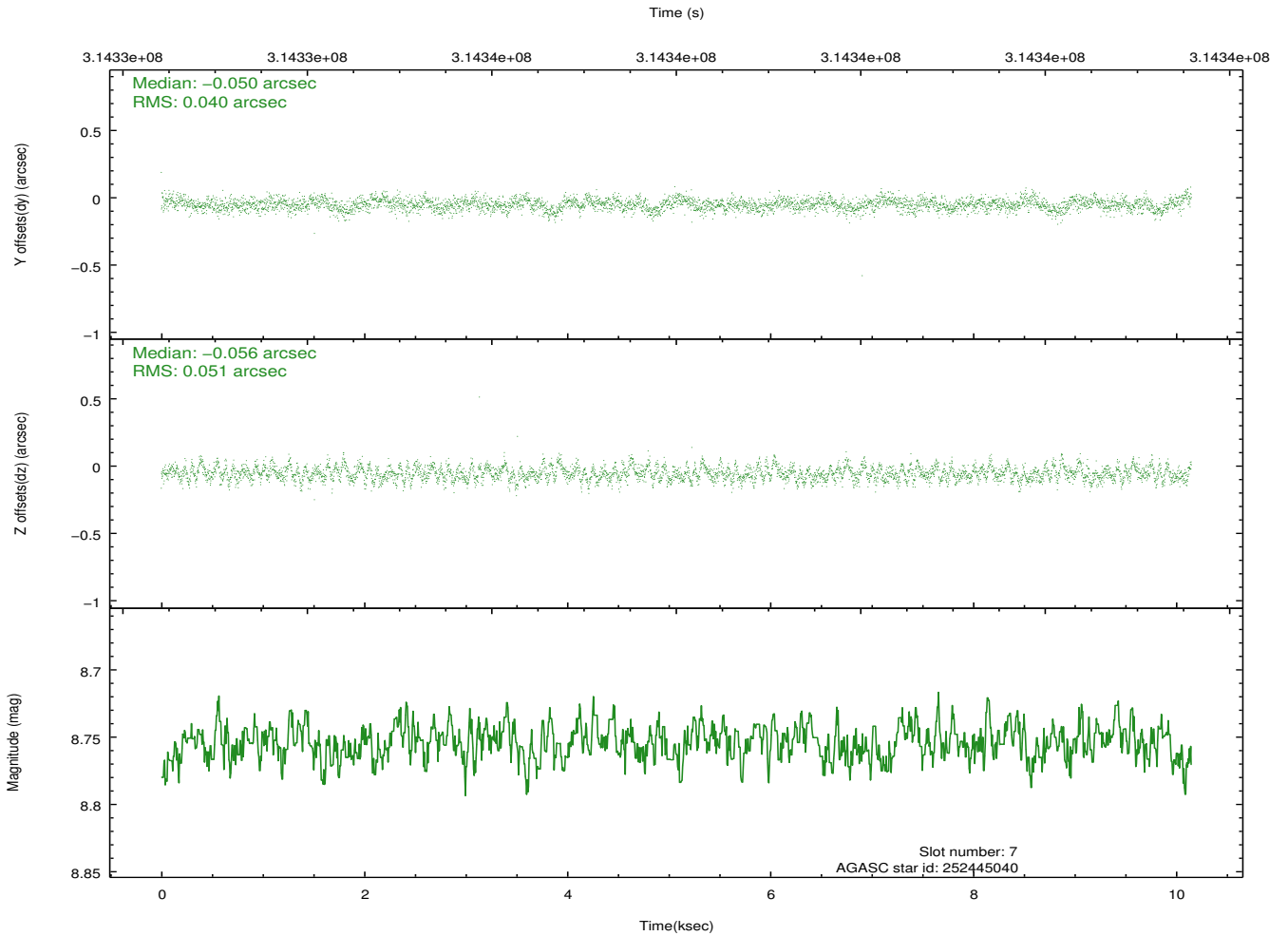
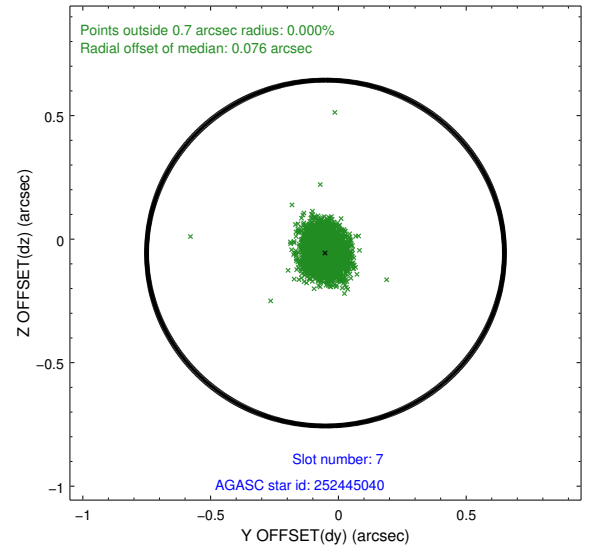
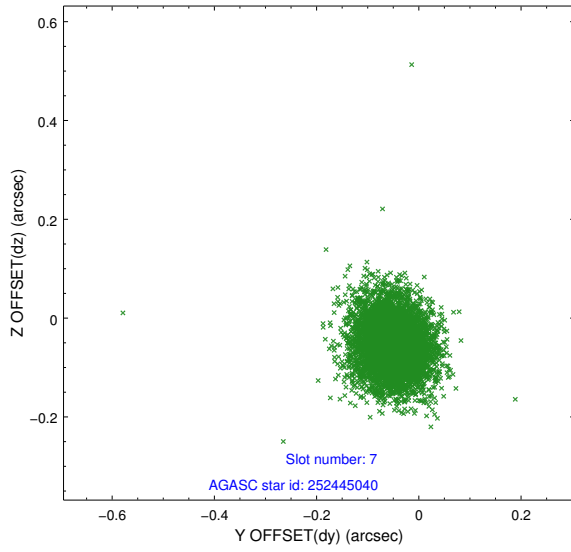
2.4.3 Slot 5



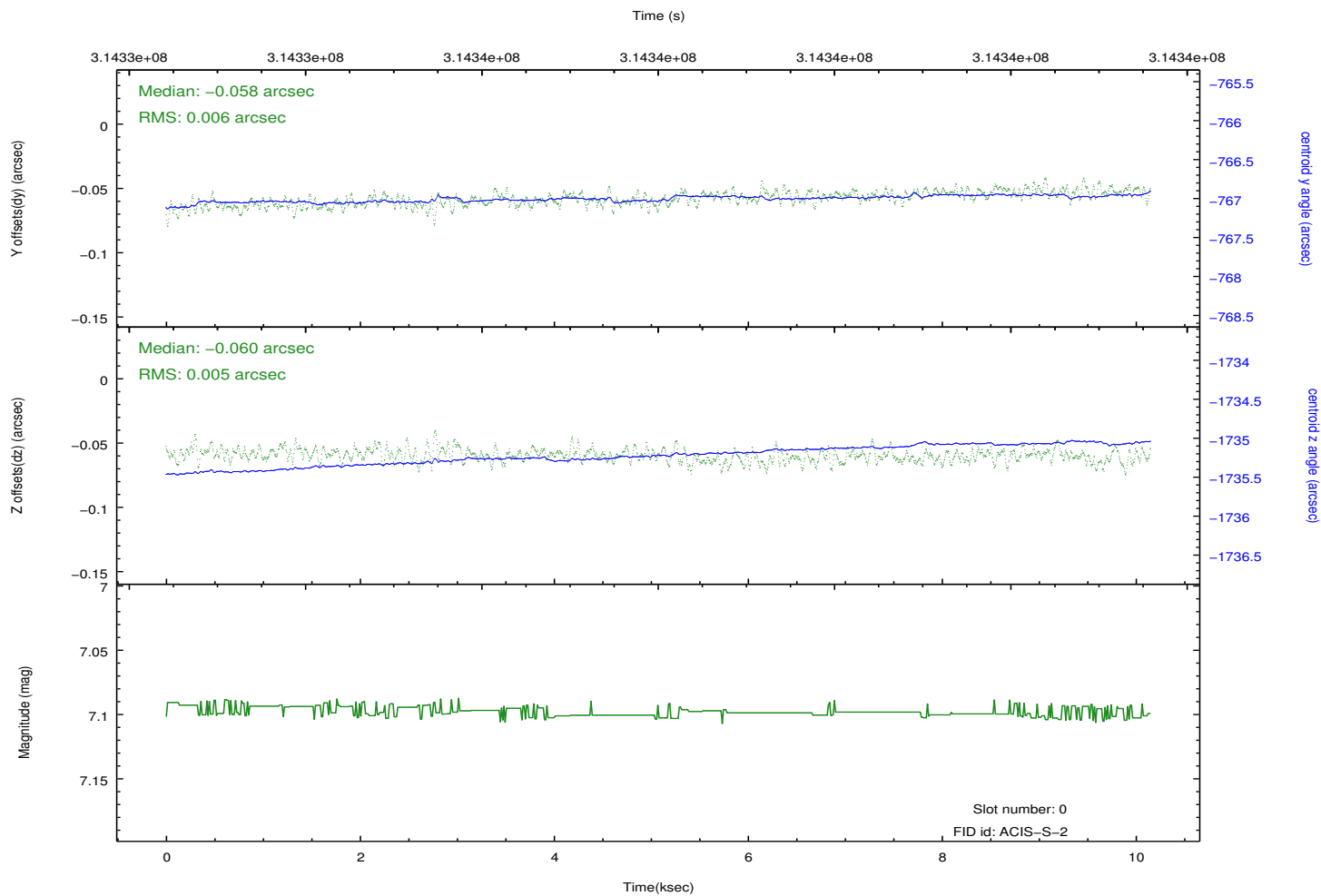
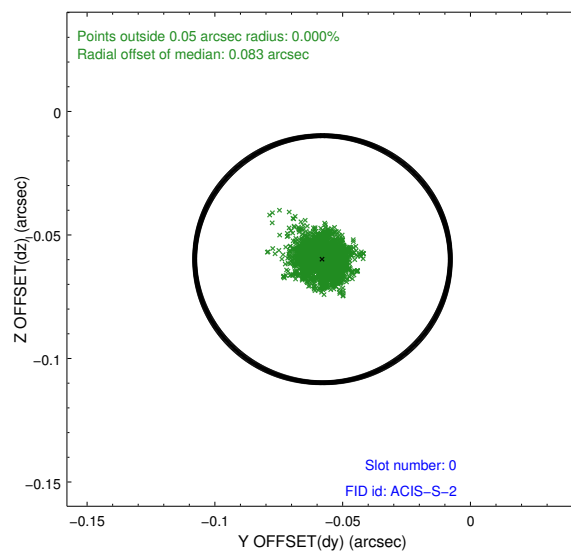
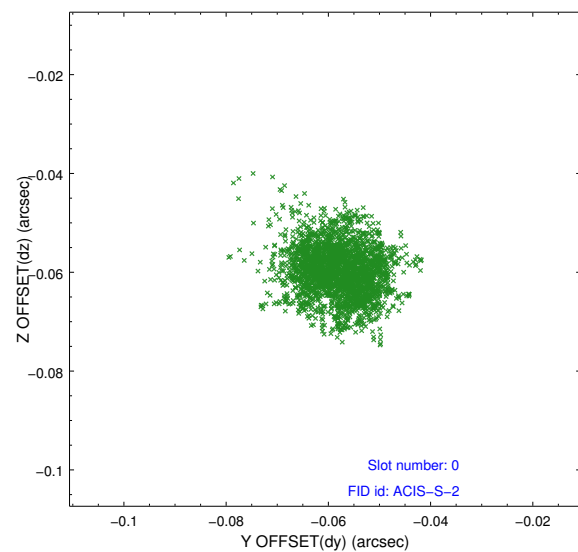
2.4.4 Slot 6



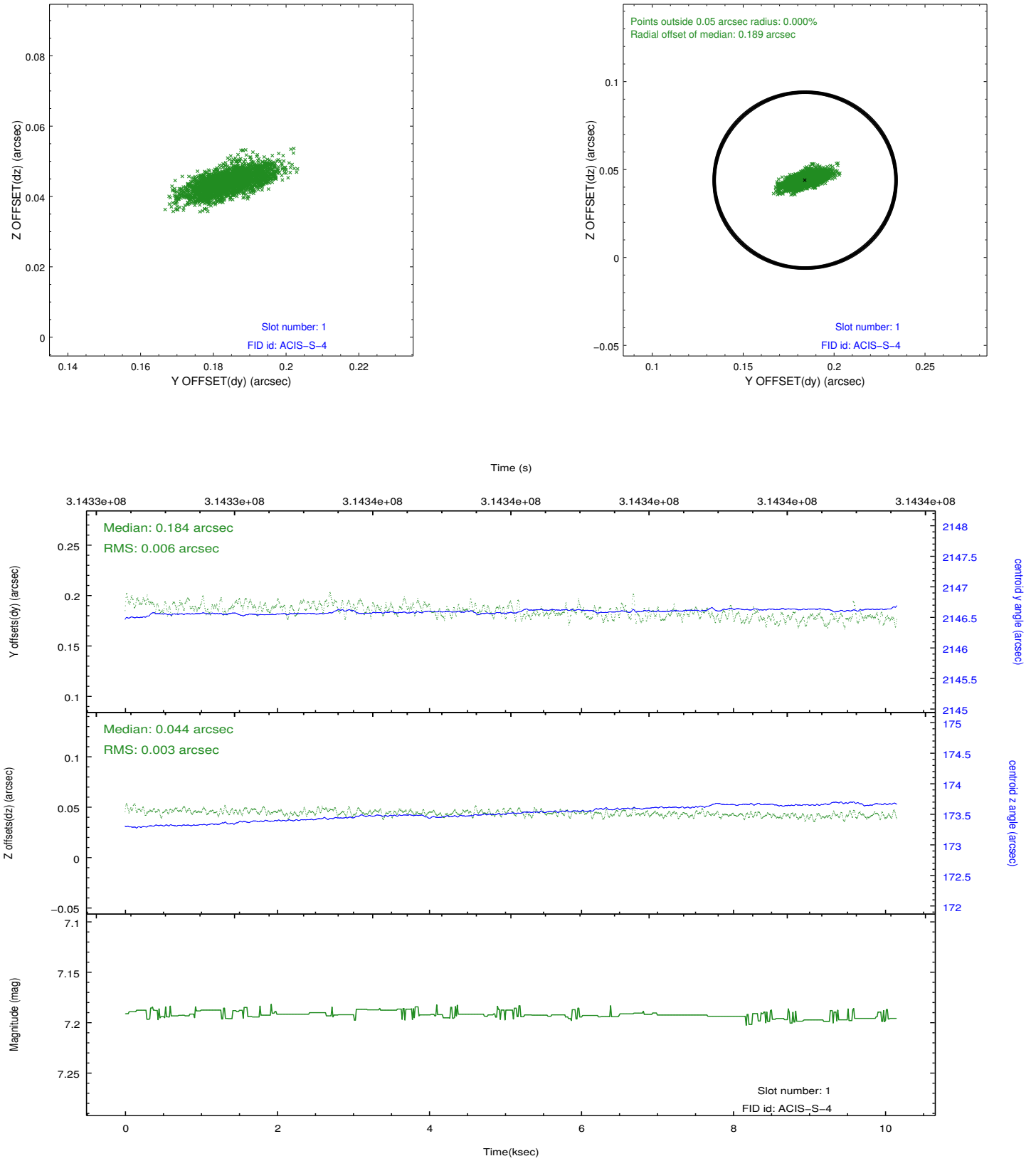
2.4.5 Slot 7



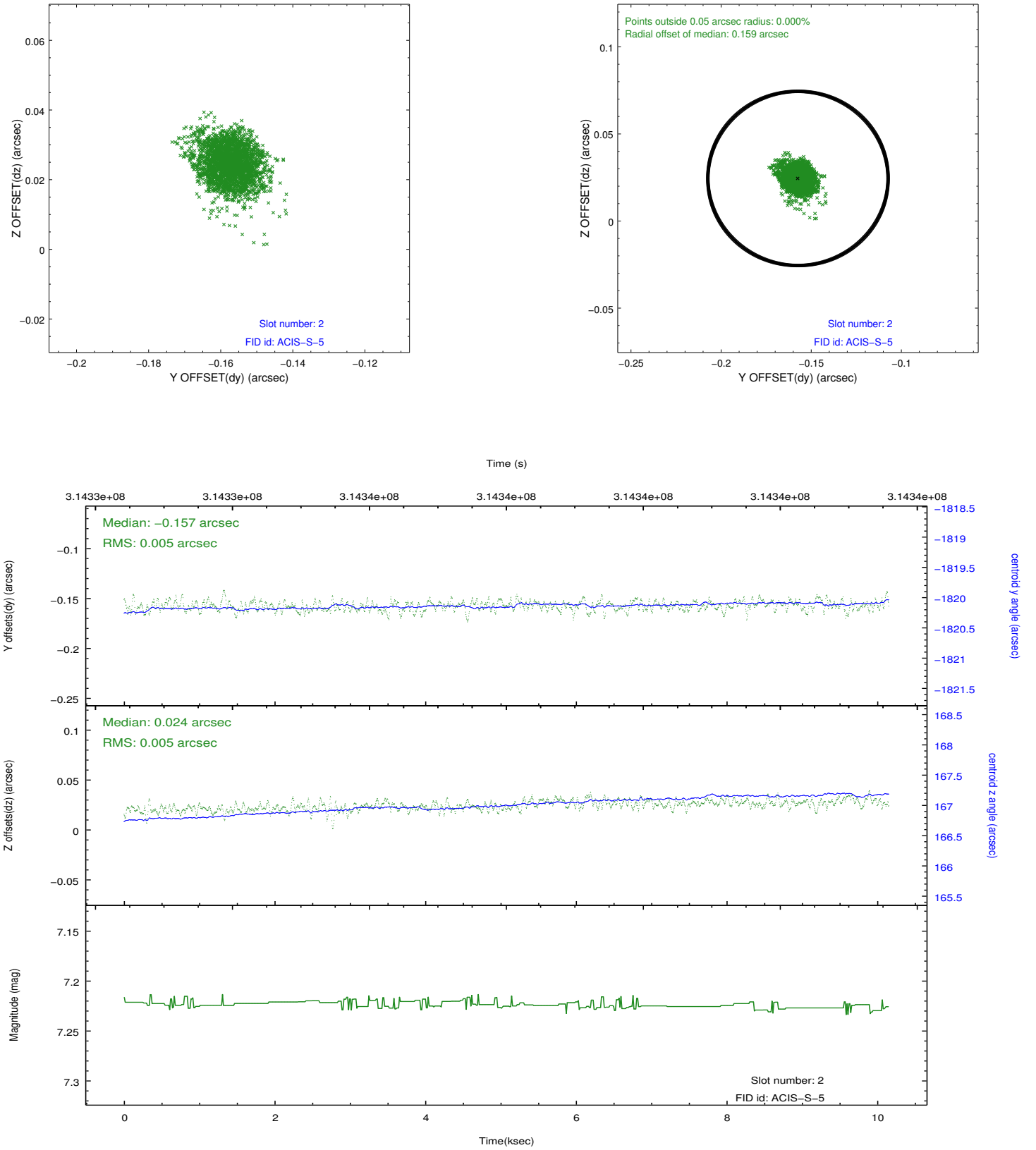
2.5.1 Slot 0



2.5.2 Slot 1



2.5.3 Slot 2



A Summary

A.1 Status

V&V Scientist	Jen Lauer
V&V Date (YYYY-MM-DD)	2012.05.08
V&V Edition	1
V&V Disposition and Status	OK
V&V Charge Time	10.1471999

A.2 Comments