

V&V Reference Report

L2 ASCDS Version : 8.4.4

Observation 9230 - L2 Version 2
Chandra X-Ray Center

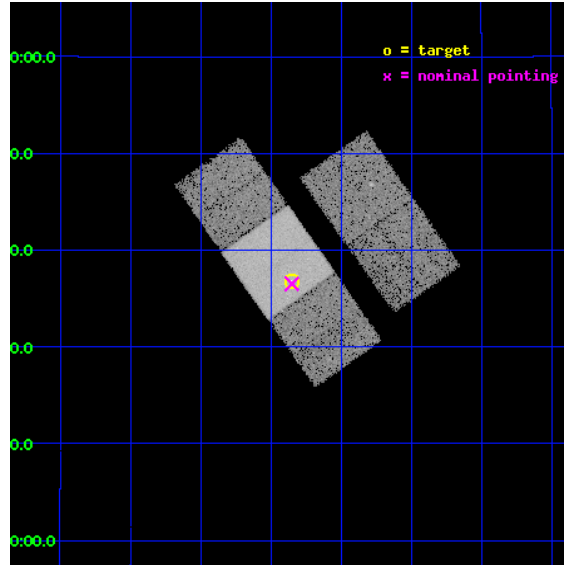
L2 Processing Date : May 13 2012

Contents

1	Front	2
2	OBI	3
2.1	OBI	3
2.1.1	Images	3
2.1.2	Bias	3
2.1.3	Parameters	4
2.1.4	Events	4
2.2	Compared Parameters	5
2.3	Aspect	6
2.4	Star Slots	9
2.4.1	Slot 3	9
2.4.2	Slot 4	10
2.4.3	Slot 5	11
2.4.4	Slot 6	12
2.4.5	Slot 7	13
2.5	FID Slots	14
2.5.1	Slot 0	14
2.5.2	Slot 1	15
2.5.3	Slot 2	16
A	Summary	17
A.1	Status	17
A.2	Comments	17

1 Front

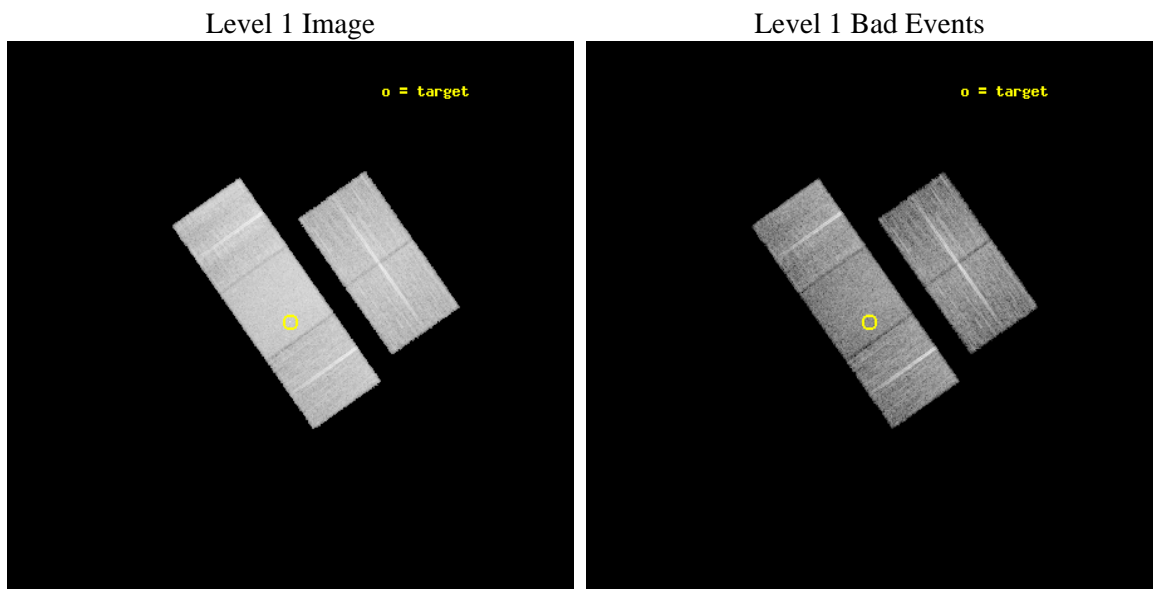
seq_num	701671	Sequence number
obs_id	9230	Observation id
title	Deconstructing the Accretion Disk Wind in Quasars	Proposal title
observer	Dr. Gordon Richards	Principal investigator
object	SDSS J1153+1136	Source name
dtcycle	0	
cycle	P	events from which exps? Prim/Second/Both
ra_targ	178.462917	Observer's specified target RA [deg]
dec_targ	11.613667	Observer's specified target Dec [deg]
ra_nom	178.46261891308	Nominal RA [deg]
dec_nom	11.608776729007	Nominal Dec [deg]
roll_nom	234.84566880031	Nominal Roll [deg]
revision	2	Processing version of data
ontime	11181.700085998	Sum of GTIs [s]
livetime	11035.602942526	Livetime [s]
ontime2	11181.700085998	Sum of GTIs [s]
ontime3	11181.700085998	Sum of GTIs [s]
ontime6	11181.700085998	Sum of GTIs [s]
ontime7	11181.700085998	Sum of GTIs [s]
ontime8	11181.700085998	Sum of GTIs [s]
l2events	105455	Number of level 2 events



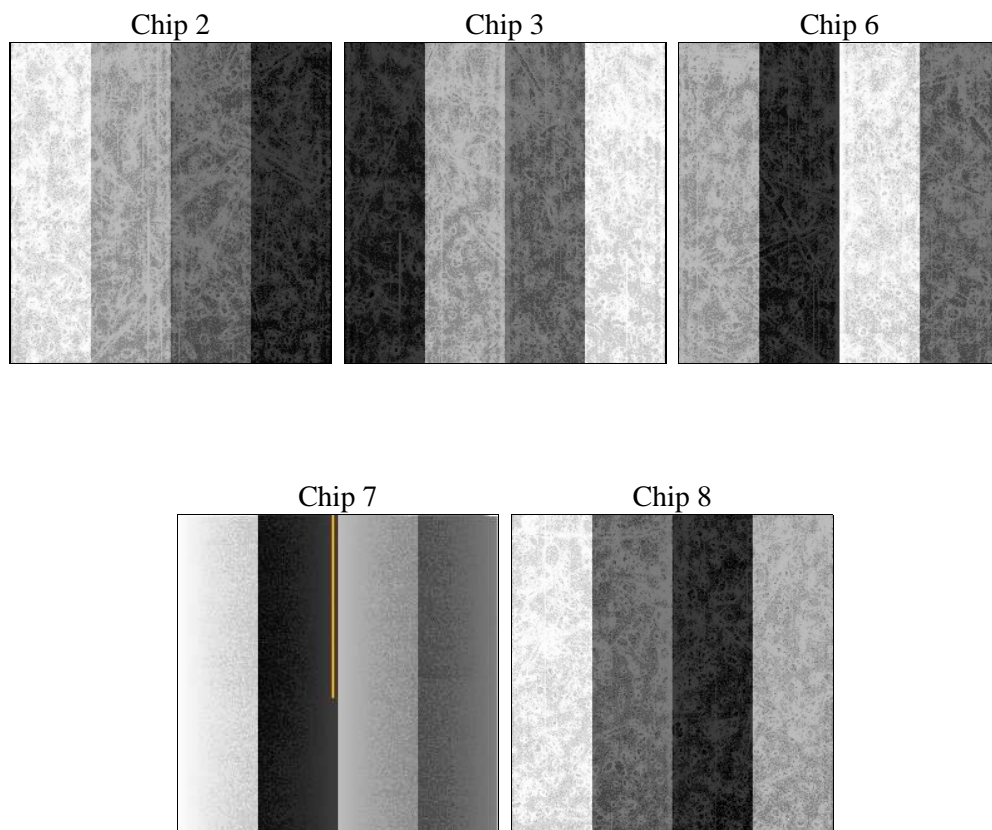
2 OBI

2.1 OBI

2.1.1 Images



2.1.2 Bias



2.1.3 Parameters

obi_num	0	Obi number	sched_exp_time	11000.000000	[s] Scheduled observation exposure time
ascdsver	8.4.4	Processing system revision	ontime	11181.700085998	Sum of GTIs [s]
caldsver	4.4.9	 	ontime2	11181.700085998	Sum of GTIs [s]
date	2012-05-13T12:31:15	Date and time of file creation	ontime3	11181.700085998	Sum of GTIs [s]
revision	2	Processing version of data	ontime6	11181.700085998	Sum of GTIs [s]
			ontime7	11181.700085998	Sum of GTIs [s]
			ontime8	11181.700085998	Sum of GTIs [s]
			l1events	628109	Number of level 1 events

2.1.4 Events

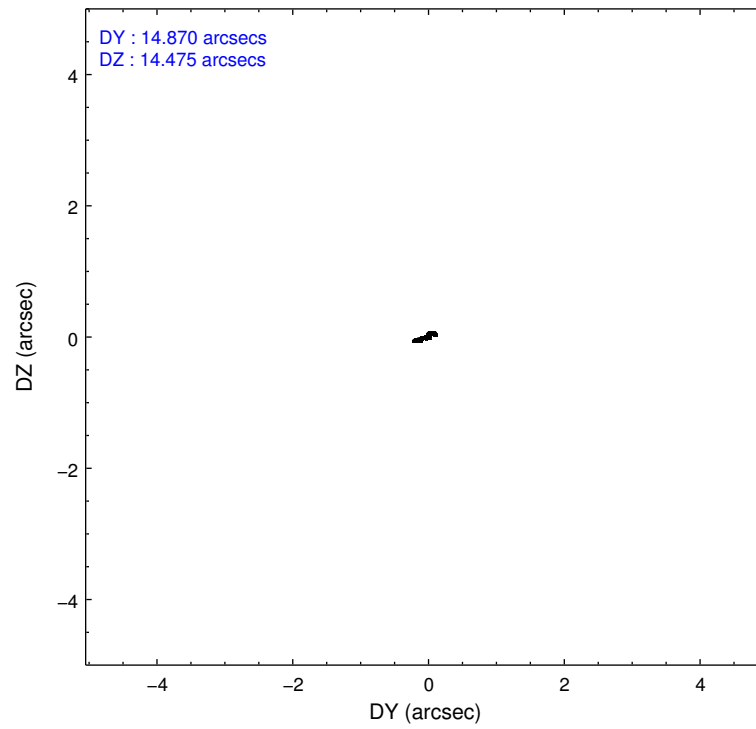
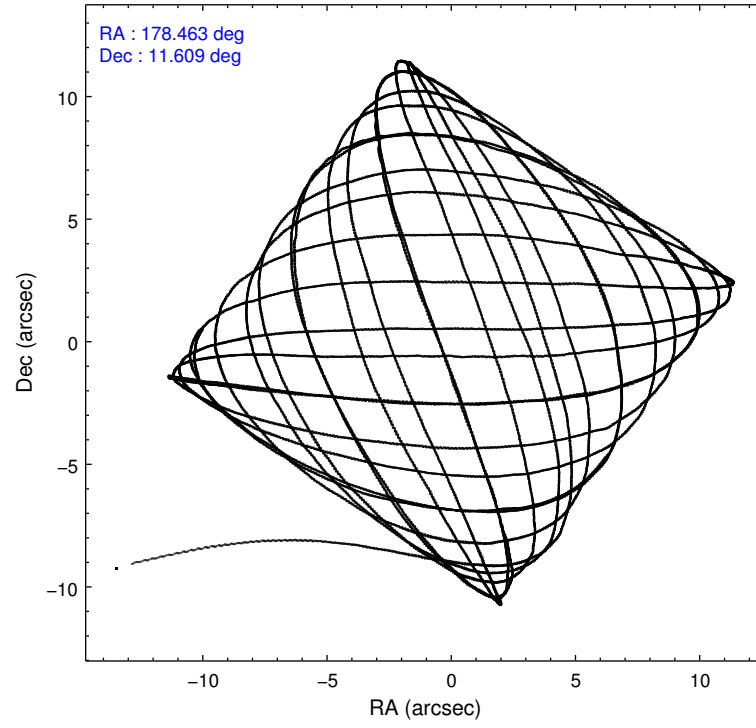
	ccd 2	ccd 3	ccd 6	ccd 7	ccd 8
level 1 events	108895	107861	112666	154722	143965
rejected events	96681	95100	99554	93660	112468
rejected %	88%	88%	88%	60%	78%

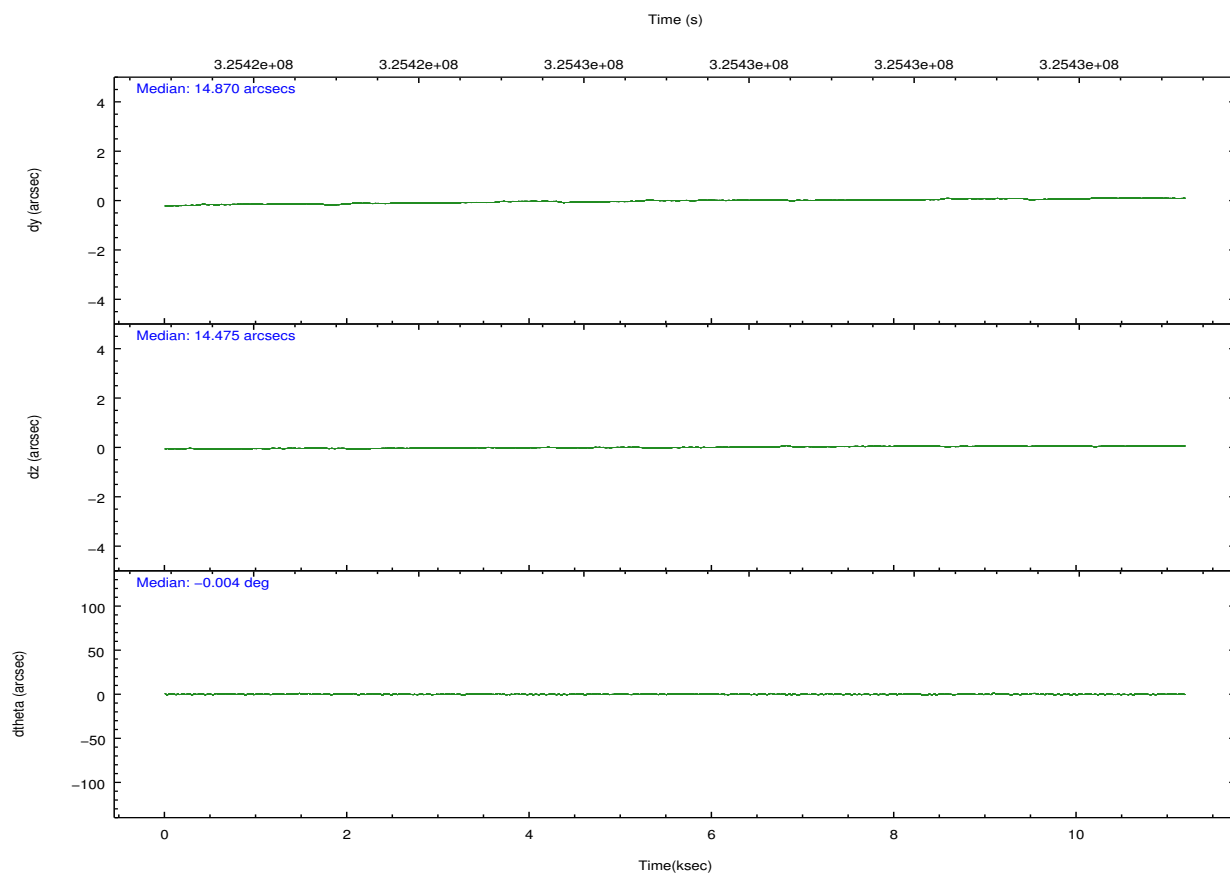
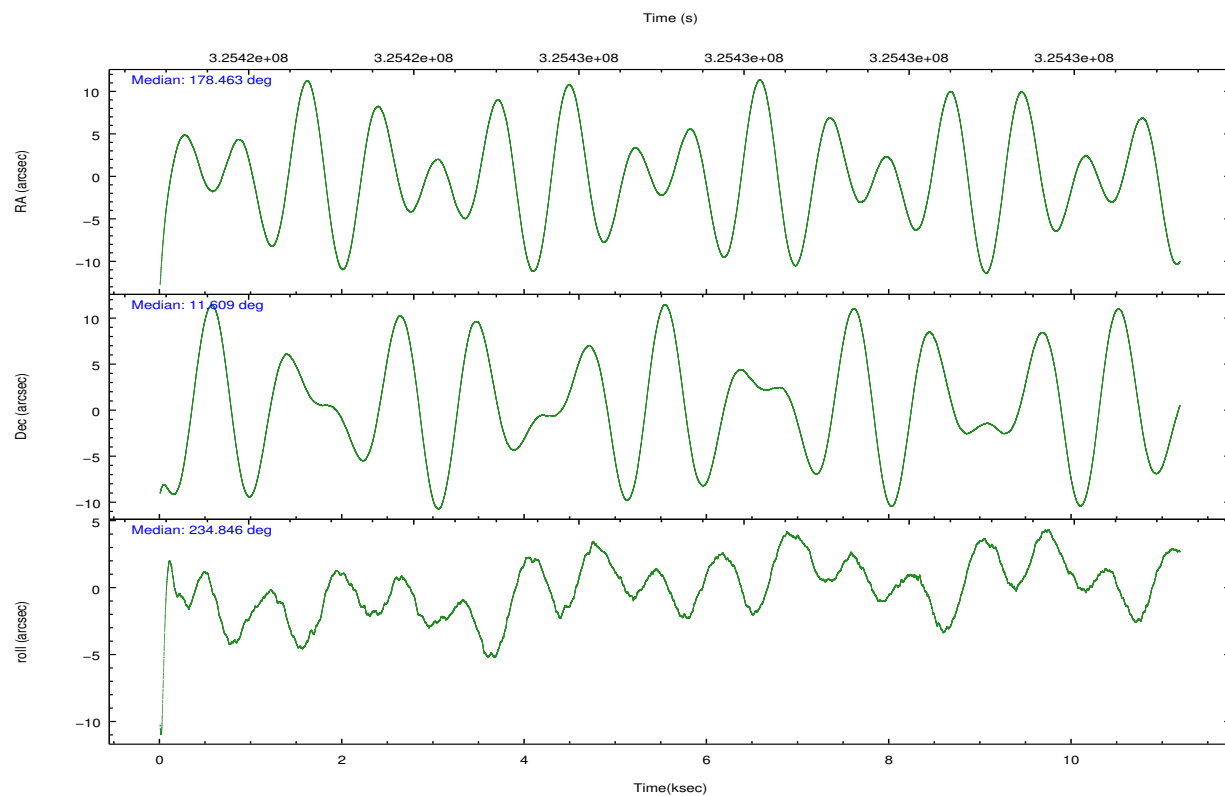
	ccd 2	ccd 3	ccd 6	ccd 7	ccd 8
grade 0 events	5342	5788	5180	5522	10261
	4%	5%	4%	3%	7%
grade 1 events	60	87	50	147	110
	0%	0%	0%	0%	0%
grade 2 events	2760	2629	3031	12924	7345
	2%	2%	2%	8%	5%
grade 3 events	1162	1260	1264	5380	3360
	1%	1%	1%	3%	2%
grade 4 events	1277	1249	1265	5318	3107
	1%	1%	1%	3%	2%
grade 5 events	4386	5012	5436	14544	7125
	4%	4%	4%	9%	4%
grade 6 events	2171	2371	2844	34363	8604
	1%	2%	2%	22%	5%
grade 7 events	91737	89465	93596	76524	104053
	84%	82%	83%	49%	72%

2.2 Compared Parameters

Parameter	Planned	Actual	Parameter	Planned	Actual
Instrument	ACIS	ACIS	Obspar format version number	7	7
Detector	ACIS-23678	ACIS-23678	Obspar file type	PREDICTED	ACTUAL
Grating	NONE	NONE	Obspar update status	NONE	UPDATED
Data mode	FAINT	FAINT	CCD I0 on	N	N
Observation mode	POINTING	POINTING	CCD I1 on	N	N
[deg] Pointing RA	178.464748	178.4626189130788	CCD I2 on	O1	Y
[deg] Pointing Dec	11.636096	11.60877672900724	CCD I3 on	Y	Y
[deg] Pointing Roll	234.688621	234.8456688003148	CCD S0 on	N	N
[mm] SIM focus pos	-0.684267	-0.6828225247311905	CCD S1 on	N	N
[mm] SIM defocus	0	0.001444936568705701	CCD S2 on	Y	Y
[mm] SIM translation stage pos	-190.132523	-190.145094680475	CCD S3 on	Y	Y
[mm] SIM translation stage offset	0	0.01257209746719923	CCD S4 on	Y	Y
[s] Observation start time (MET)	325421699.184000	325420475.39567	CCD S5 on	N	N
Observation start date	2008-04-24T10:53:54	2008-04-24T10:34:35	Number of optional ACIS chips dropped	0	0
[s] Observation end time (MET)	325432699.184000	325433044.45878	On-chip summing requested	N	N
Observation end date	2008-04-24T13:57:14	2008-04-24T14:04:04	Subarray requested	NONE	NONE
Read mode	TIMED	TIMED	Alternating exposures requested	N	N
			[s] Primary exposure time	0.000000	3.1

2.3 Aspect



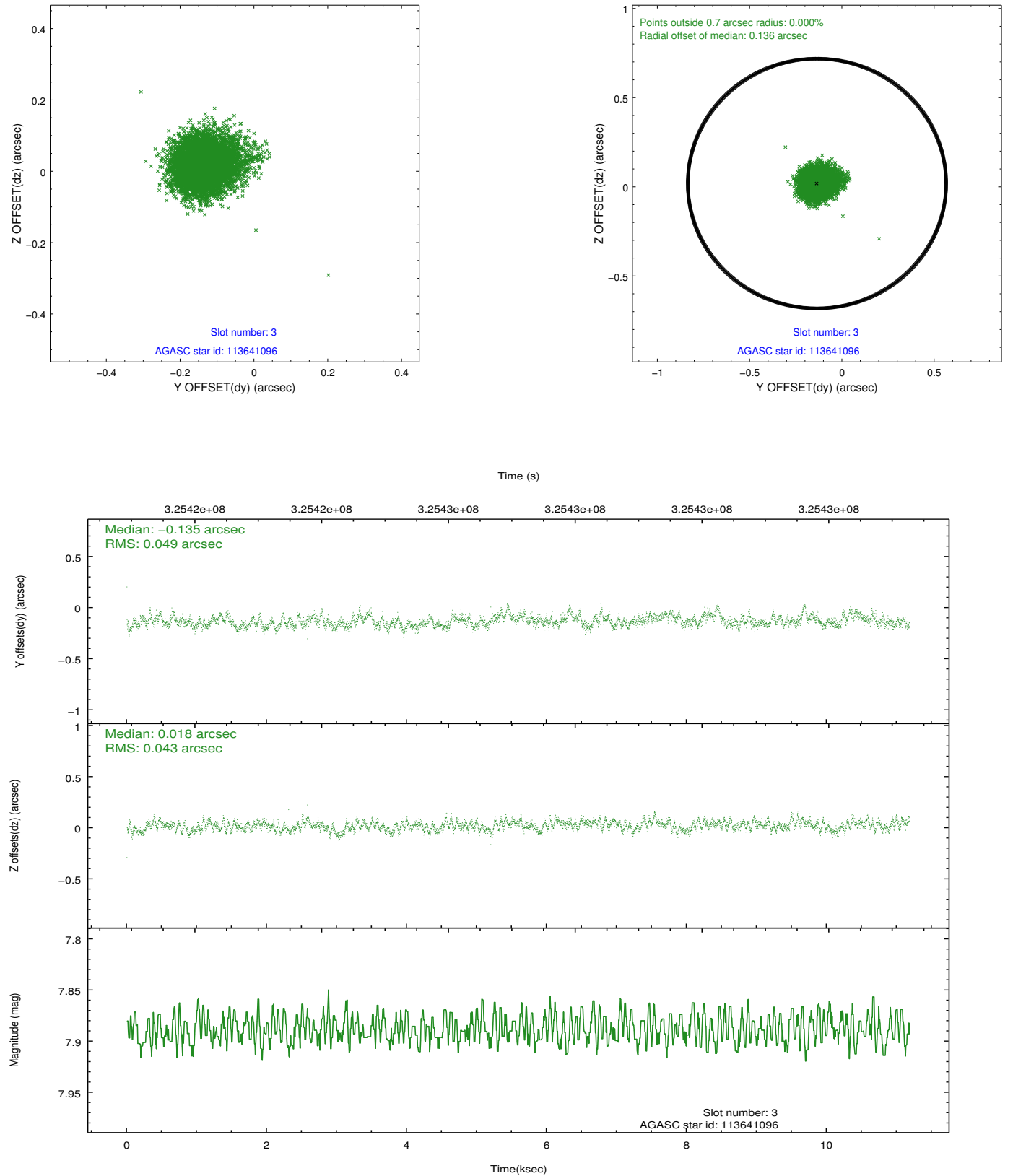


Slot Statistics

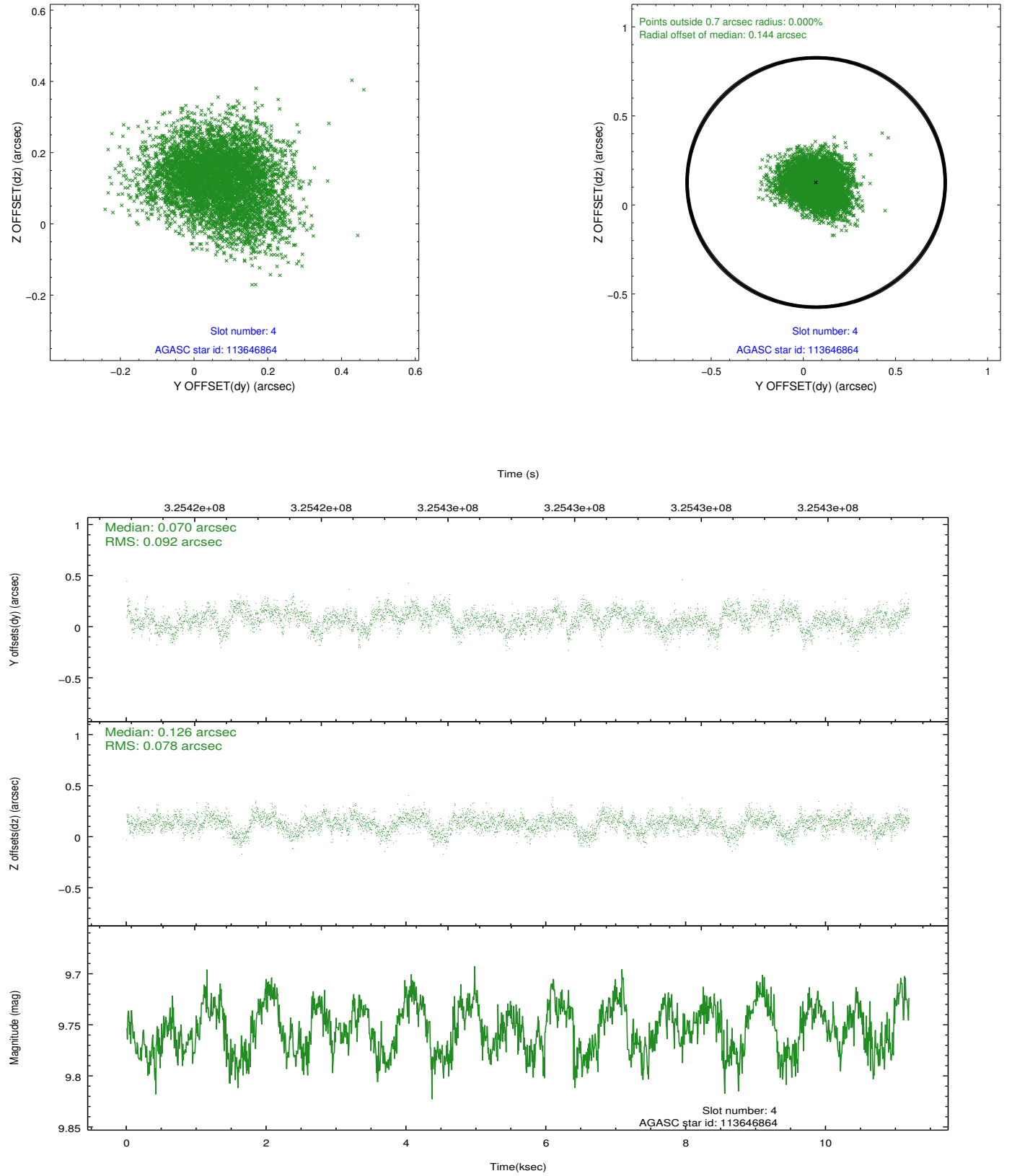
slot	status	id	mag	n_pts	med_dy	med_dz	dr1	dr2	ra	dec	mean_y	mean_z
0	FID	ACIS-S-2	6.89	2729	-0.086	-0.033	0.011	0.017	0.000000	0.000000	-767.89	-1735.78
1	FID	ACIS-S-4	6.98	2729	0.185	0.051	0.013	0.020	0.000000	0.000000	2145.44	172.32
2	FID	ACIS-S-5	7.00	2729	-0.130	-0.008	0.015	0.022	0.000000	0.000000	-1820.20	166.45
3	GUIDE	113641096	7.89	5457	-0.135	0.018	0.070	0.111	178.529400	12.056683	-1366.90	-688.49
4	GUIDE	113646864	9.75	5454	0.070	0.126	0.128	0.207	178.405463	10.987325	2026.83	1179.36
5	GUIDE	113647176	9.47	5455	-0.040	0.016	0.106	0.171	178.587373	11.090056	1354.11	1489.89
6	GUIDE	113771248	8.97	5449	0.077	-0.084	0.082	0.130	178.732168	11.694850	-717.22	646.14
7	GUIDE	113644280	8.43	5456	0.034	-0.071	0.074	0.121	178.473332	11.119604	1499.63	1099.51

2.4 Star Slots

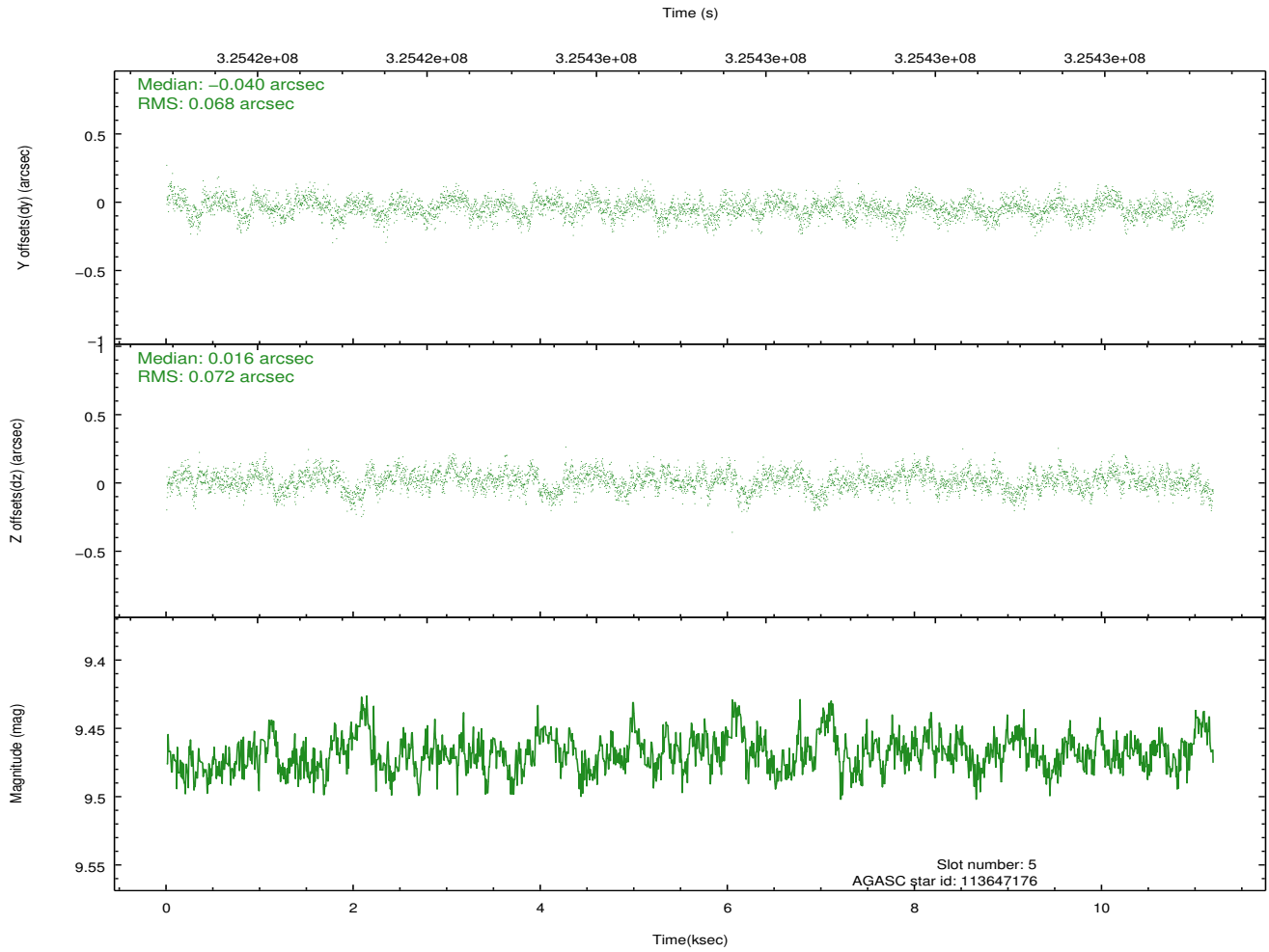
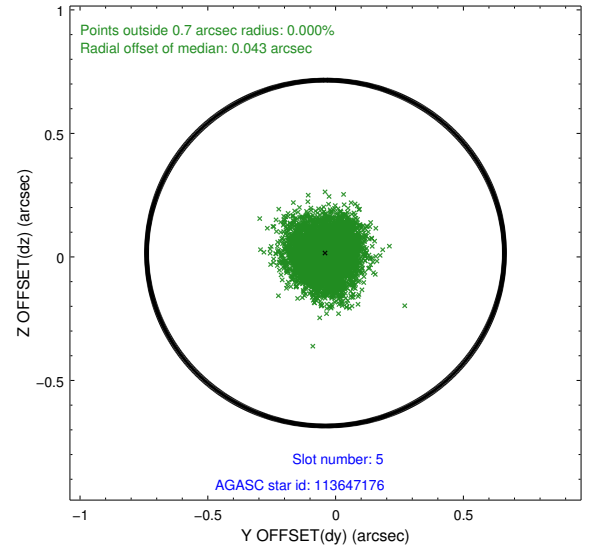
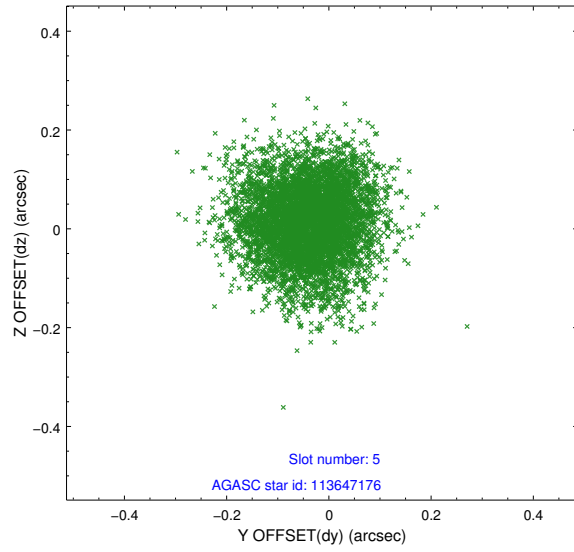
2.4.1 Slot 3



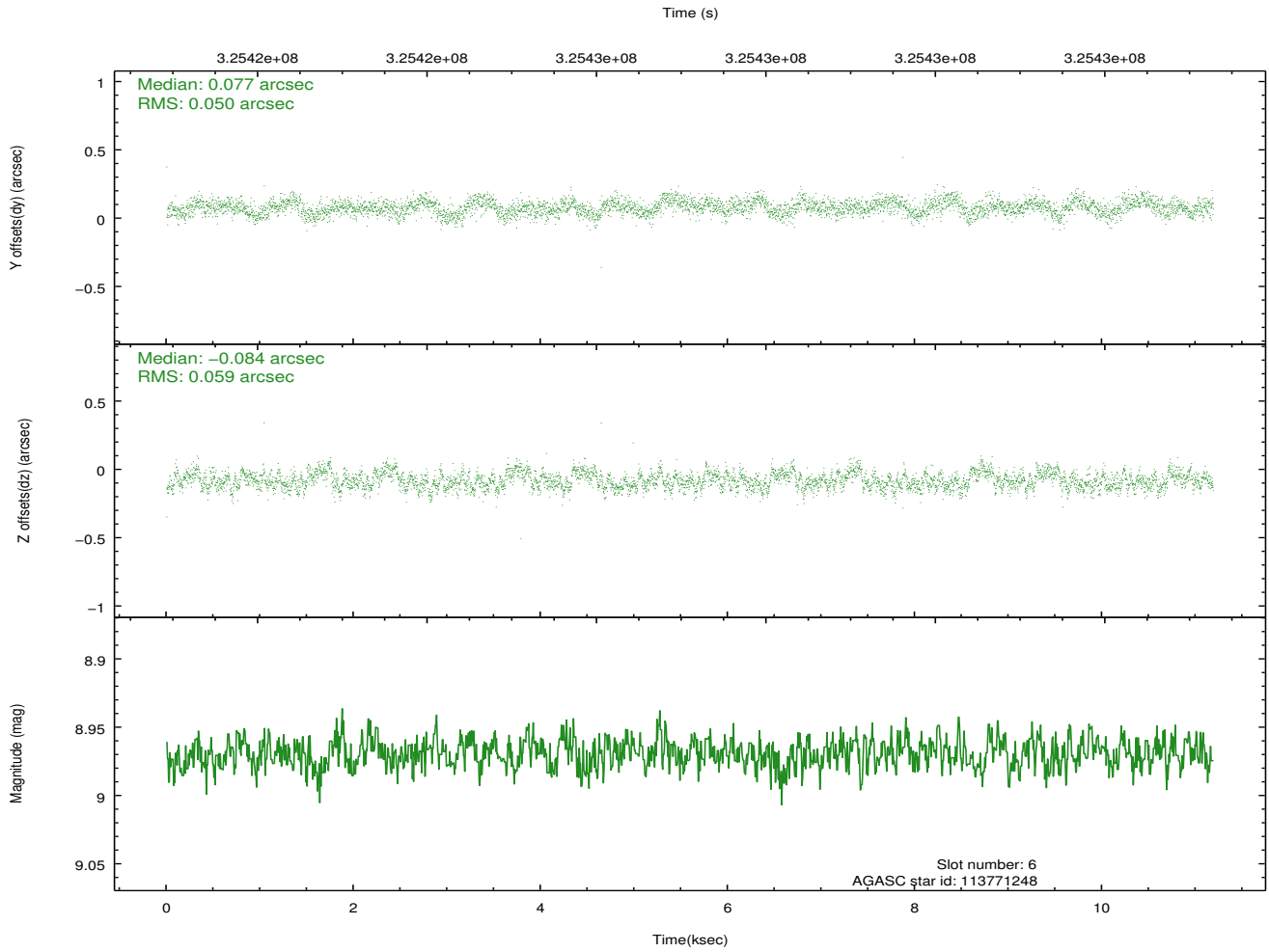
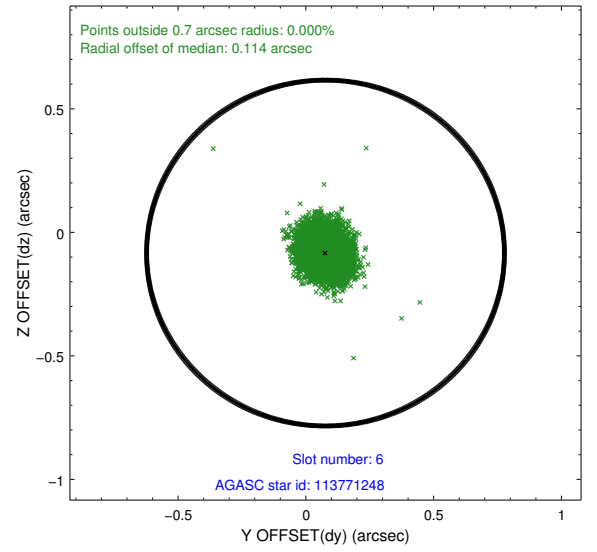
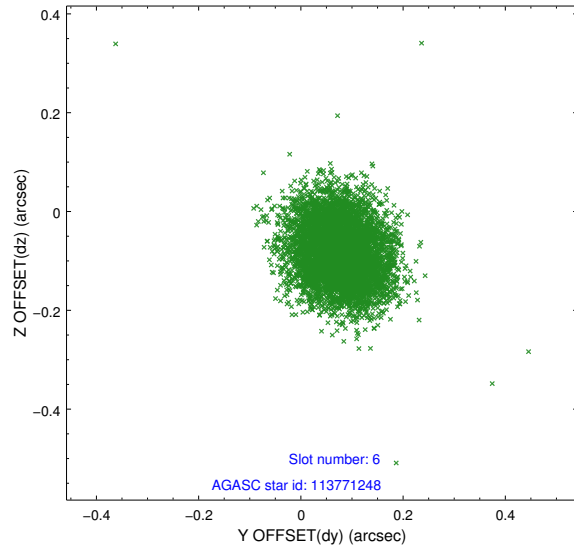
2.4.2 Slot 4



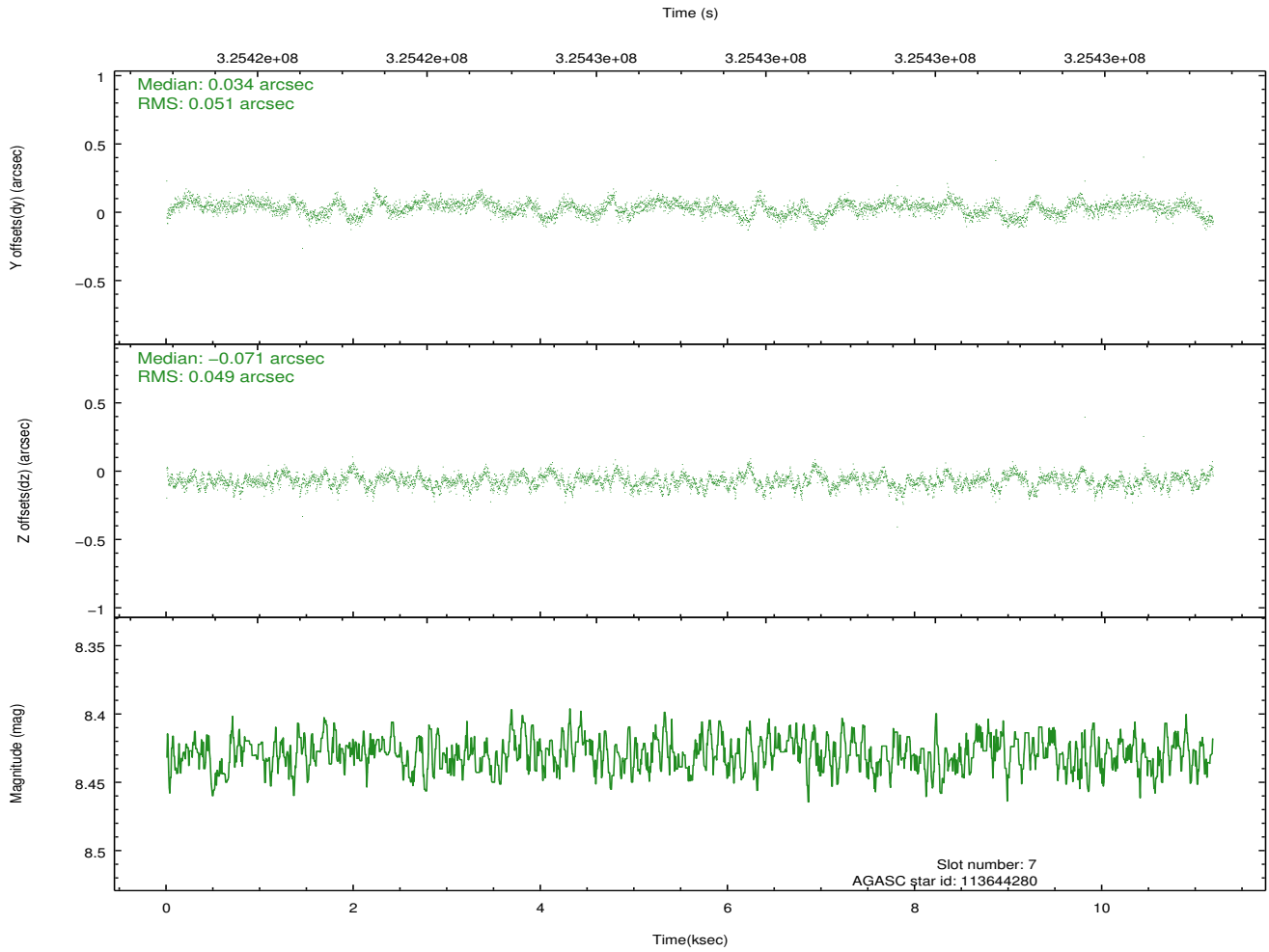
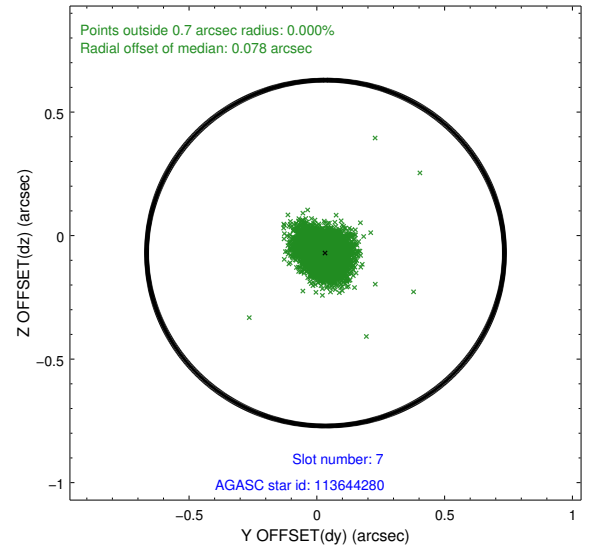
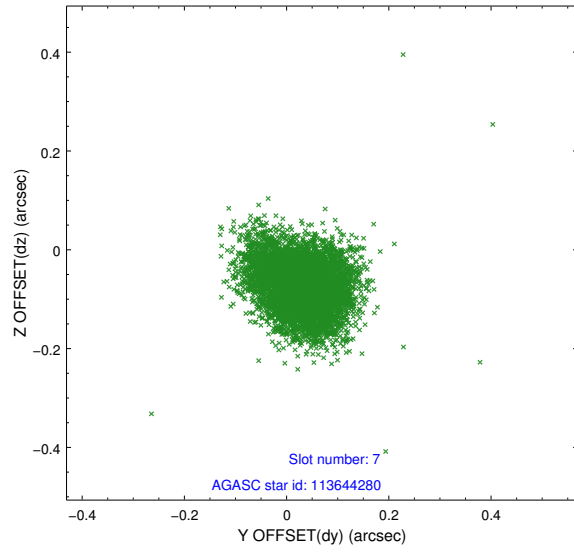
2.4.3 Slot 5



2.4.4 Slot 6

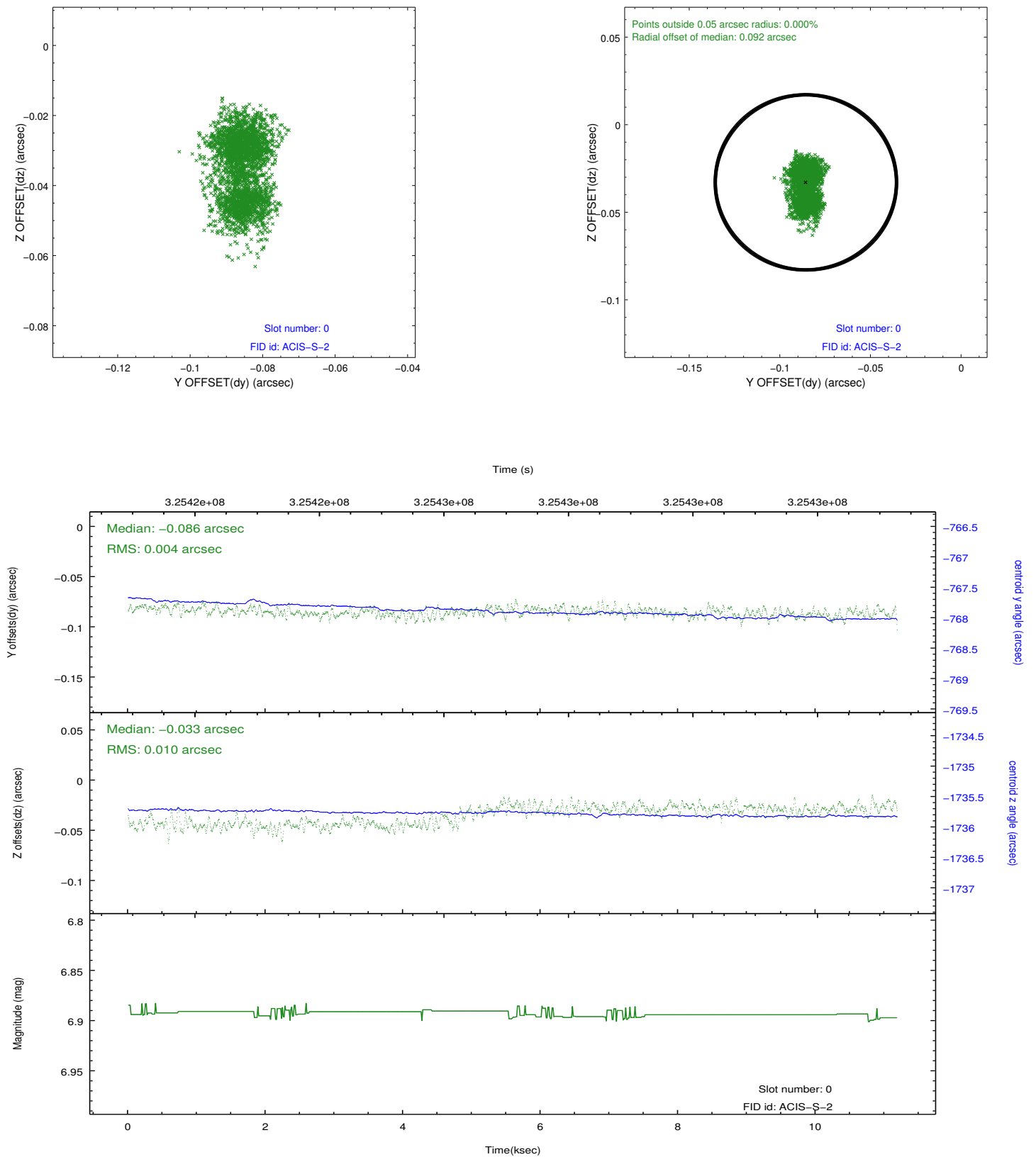


2.4.5 Slot 7

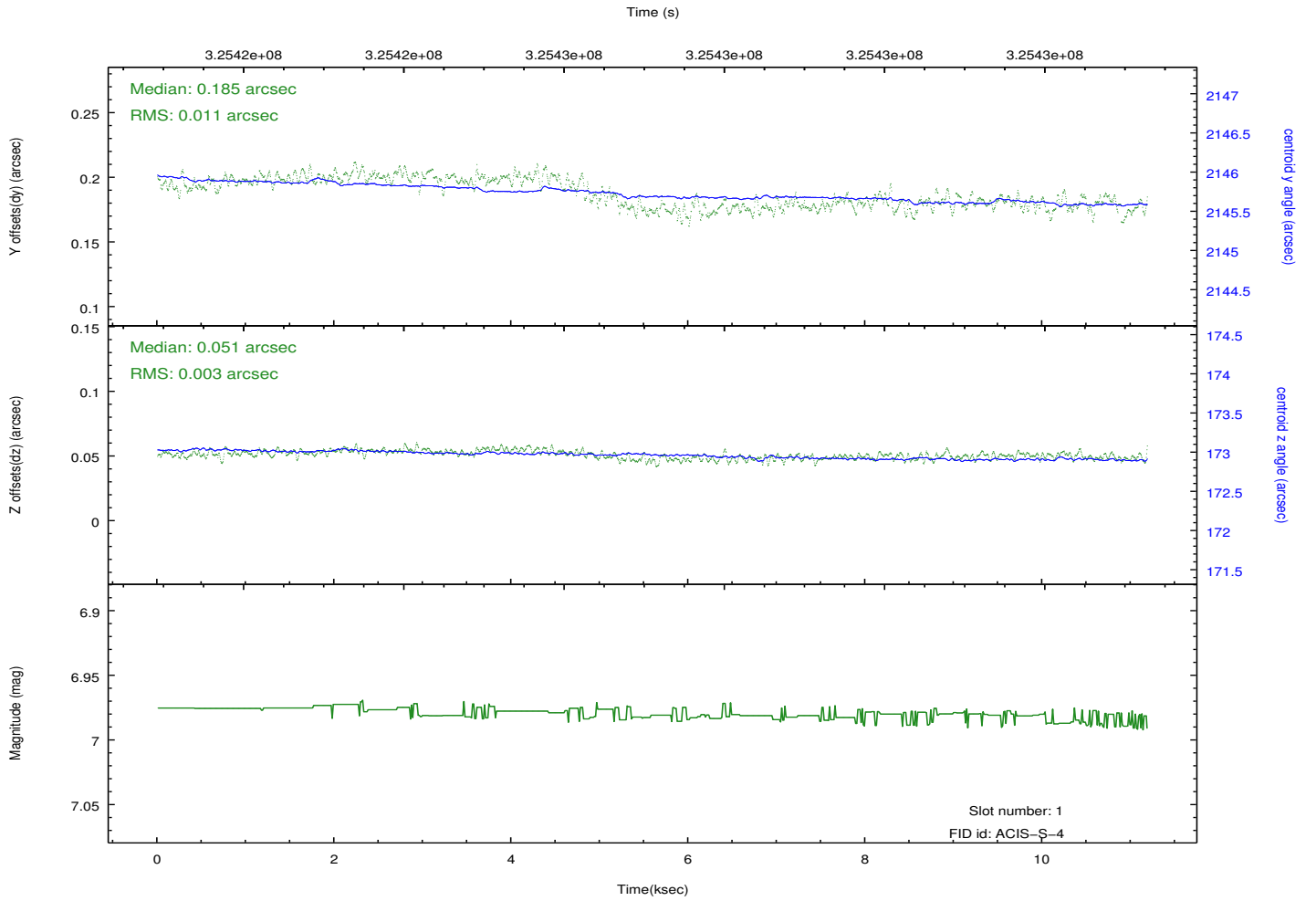
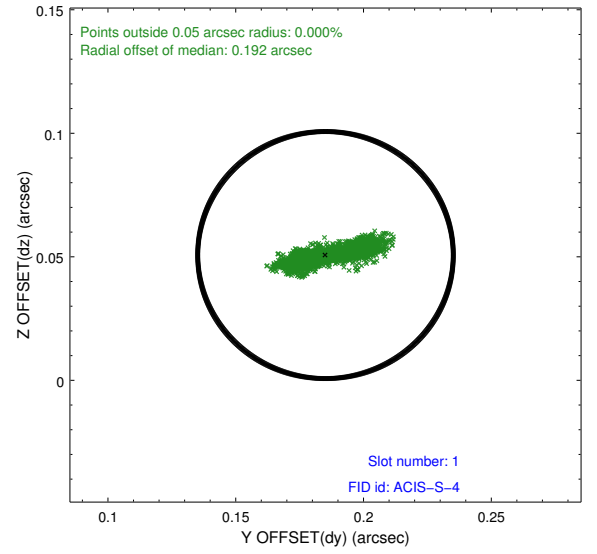
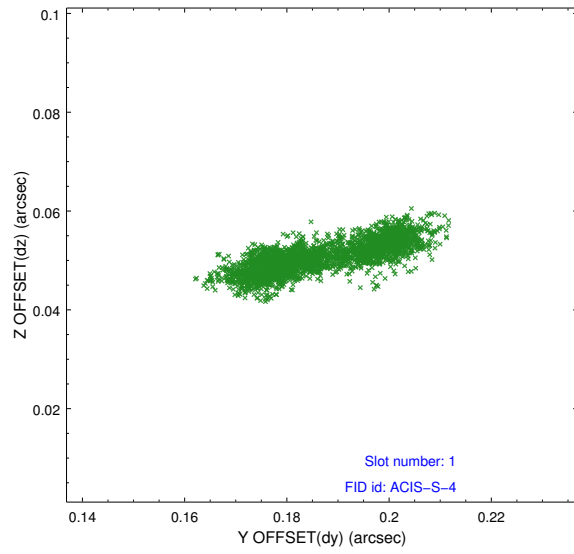


2.5 FID Slots

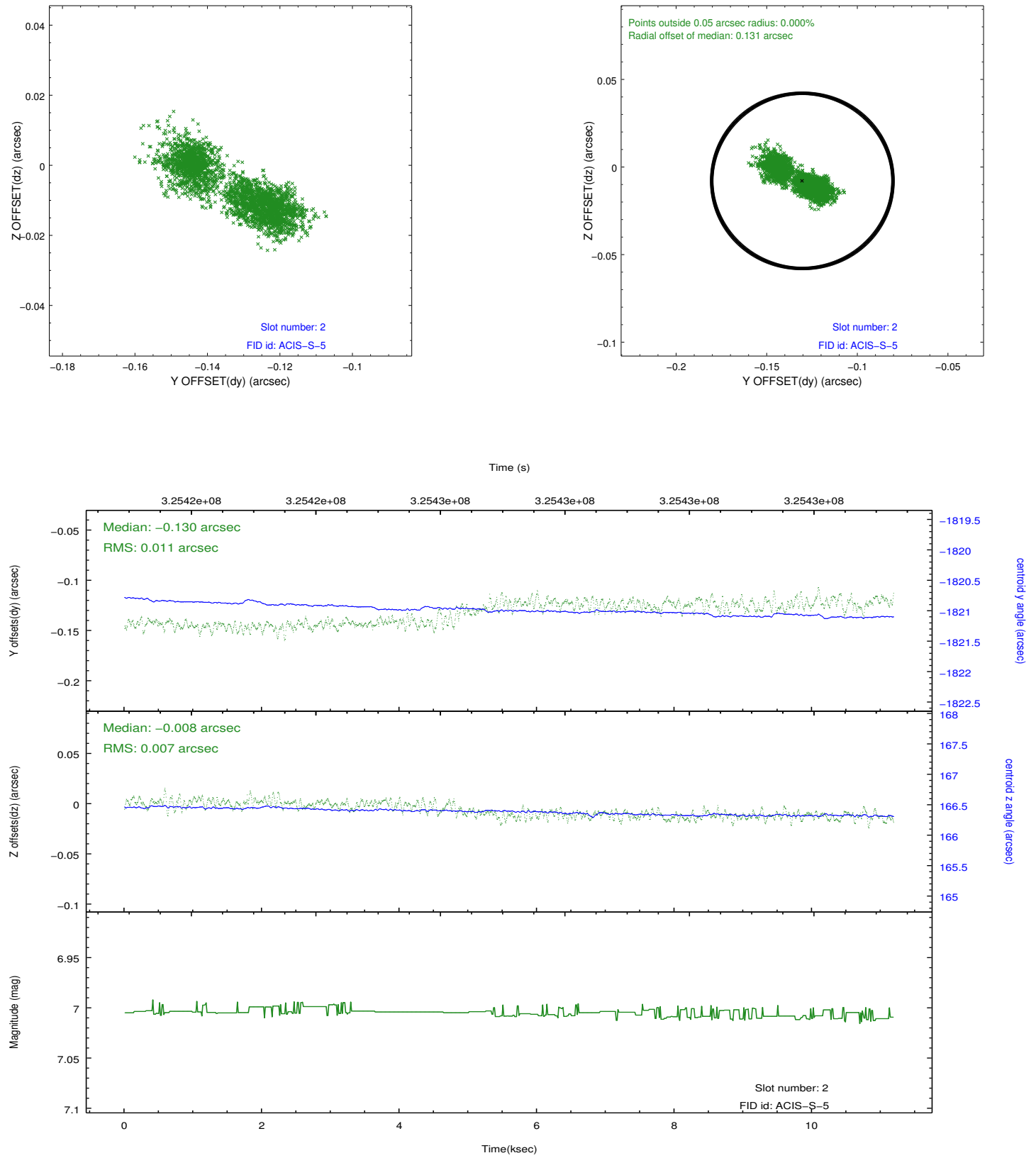
2.5.1 Slot 0



2.5.2 Slot 1



2.5.3 Slot 2



A Summary

A.1 Status

V&V Scientist	Beth Sundheim
V&V Date (YYYY-MM-DD)	2012.05.15
V&V Edition	1
V&V Disposition and Status	OK
V&V Charge Time	11.1817

A.2 Comments