

# V&V Reference Report

## L2 ASCDS Version : 8.4.4

Observation 9220 - L2 Version 3  
Chandra X-Ray Center

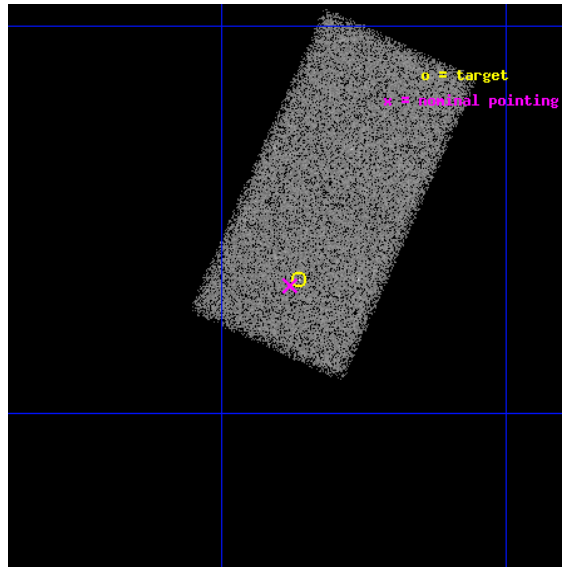
L2 Processing Date : May 23 2012

## Contents

<b>1</b>	<b>Front</b>	<b>2</b>
<b>2</b>	<b>OBI</b>	<b>3</b>
2.1	OBI . . . . .	3
2.1.1	Images . . . . .	3
2.1.2	Bias . . . . .	3
2.1.3	Parameters . . . . .	4
2.1.4	Events . . . . .	4
2.2	Compared Parameters . . . . .	5
2.3	Aspect . . . . .	6
2.4	Star Slots . . . . .	9
2.4.1	Slot 3 . . . . .	9
2.4.2	Slot 4 . . . . .	10
2.4.3	Slot 5 . . . . .	11
2.4.4	Slot 6 . . . . .	12
2.5	FID Slots . . . . .	13
2.5.1	Slot 0 . . . . .	13
2.5.2	Slot 1 . . . . .	14
2.5.3	Slot 2 . . . . .	15
<b>A</b>	<b>Summary</b>	<b>16</b>
A.1	Status . . . . .	16
A.2	Comments . . . . .	16

# 1 Front

seq_num	701661	Sequence number
obs_id	9220	Observation id
title	A Simple Test of Quasar Outflow Models	Proposal title
observer	Professor Fred Hamann	Principal investigator
object	Q0105+061	Source name
dtcycle	0	&#160
cycle	P	events from which exps? Prim/Second/Both
ra_targ	17.090833	Observer's specified target RA [deg]
dec_targ	6.391	Observer's specified target Dec [deg]
ra_nom	17.094900172769	Nominal RA [deg]
dec_nom	6.3882668856144	Nominal Dec [deg]
roll_nom	294.3231102056	Nominal Roll [deg]
revision	3	Processing version of data
ontime	20421.0	Sum of GTIs [s]
livetime	19877.160878368	Livetime [s]
ontime7	20421.0	Sum of GTIs [s]
l2events	61537	Number of level 2 events

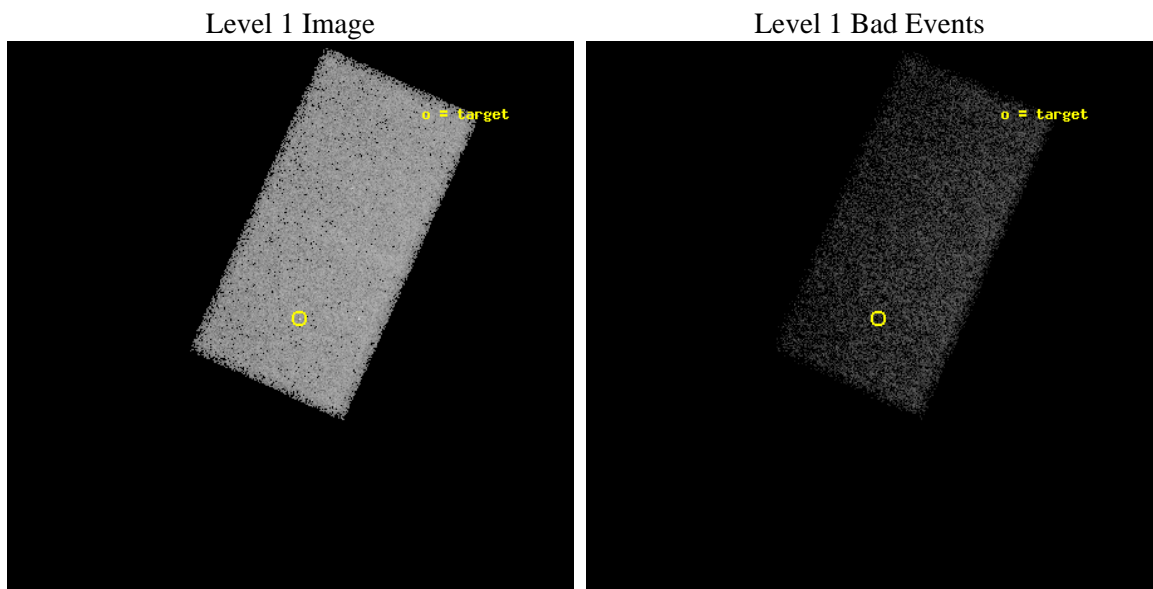




## 2 OBI

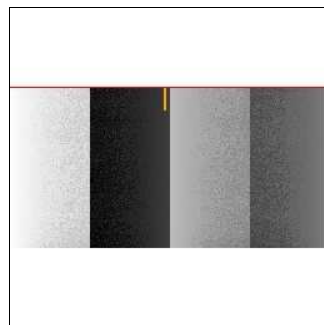
### 2.1 OBI

#### 2.1.1 Images



#### 2.1.2 Bias

Chip 7



### 2.1.3 Parameters

obi_num	0	Obi number	sched_exp_time	20236.866000	[s] Scheduled observation exposure time
ascdsver	8.4.4	Processing system revision	ontime	20421.0	Sum of GTIs [s]
caldsver	4.4.9	&#160	ontime7	20421.0	Sum of GTIs [s]
date	2012-05-23T15:07:00	Date and time of file creation	l1events	149939	Number of level 1 events
revision	3	Processing version of data			

### 2.1.4 Events

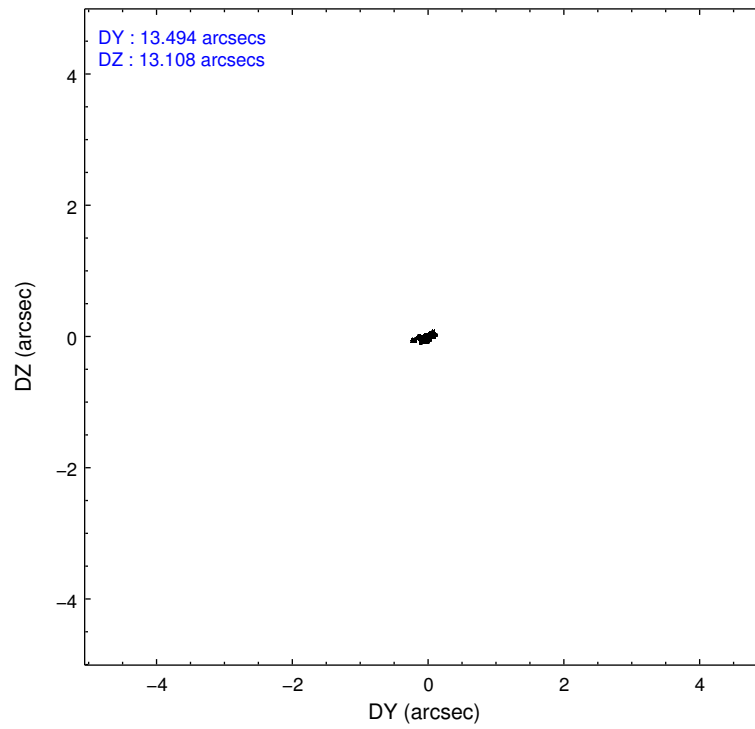
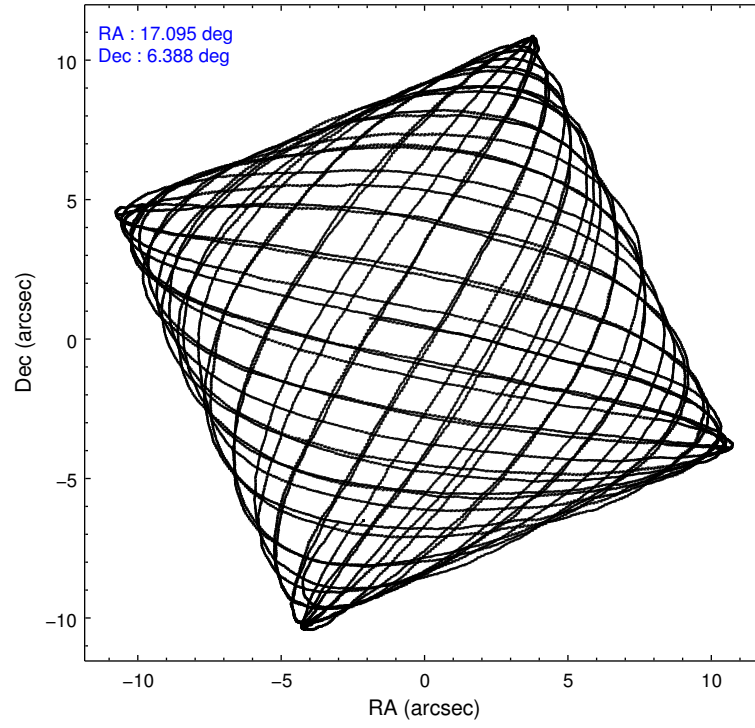
	<b>ccd 7</b>
level 1 events	149939
rejected events	86829
rejected %	57%

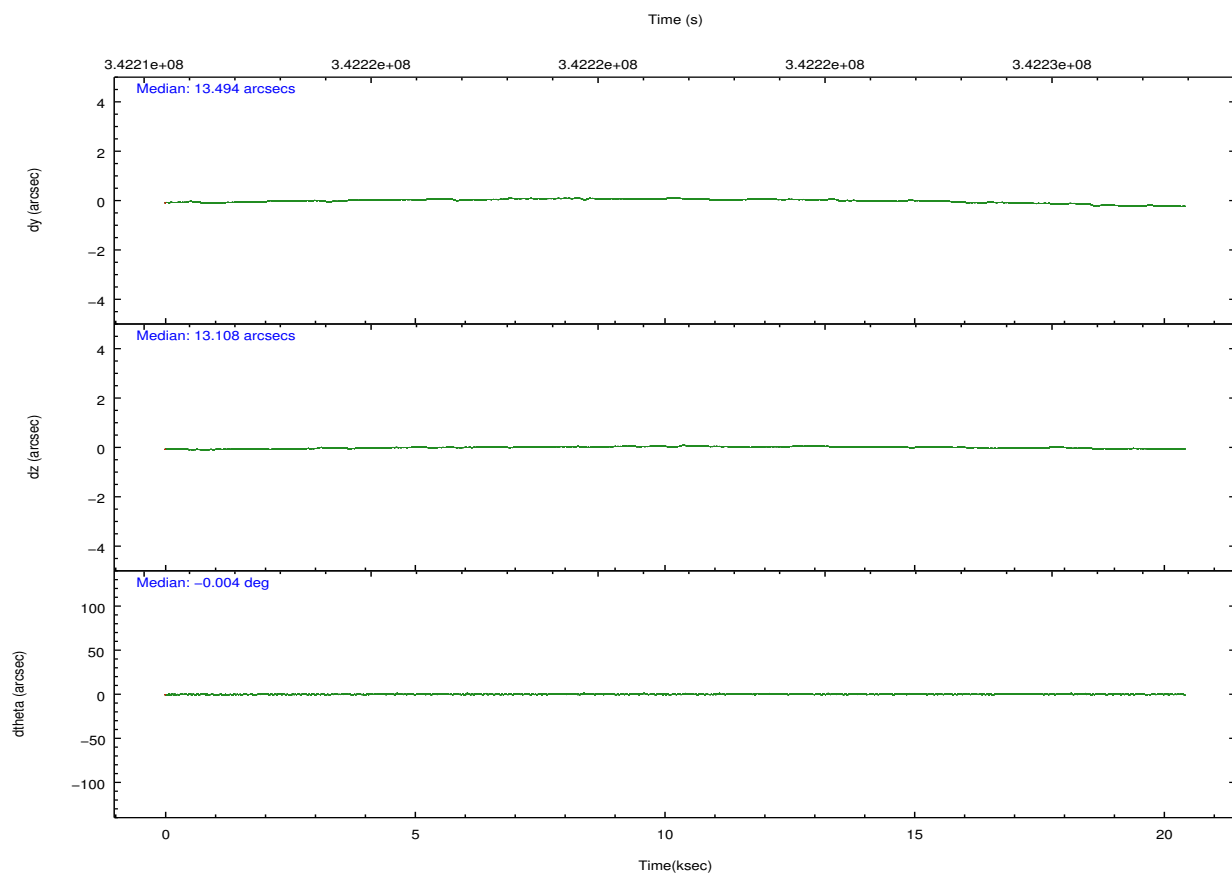
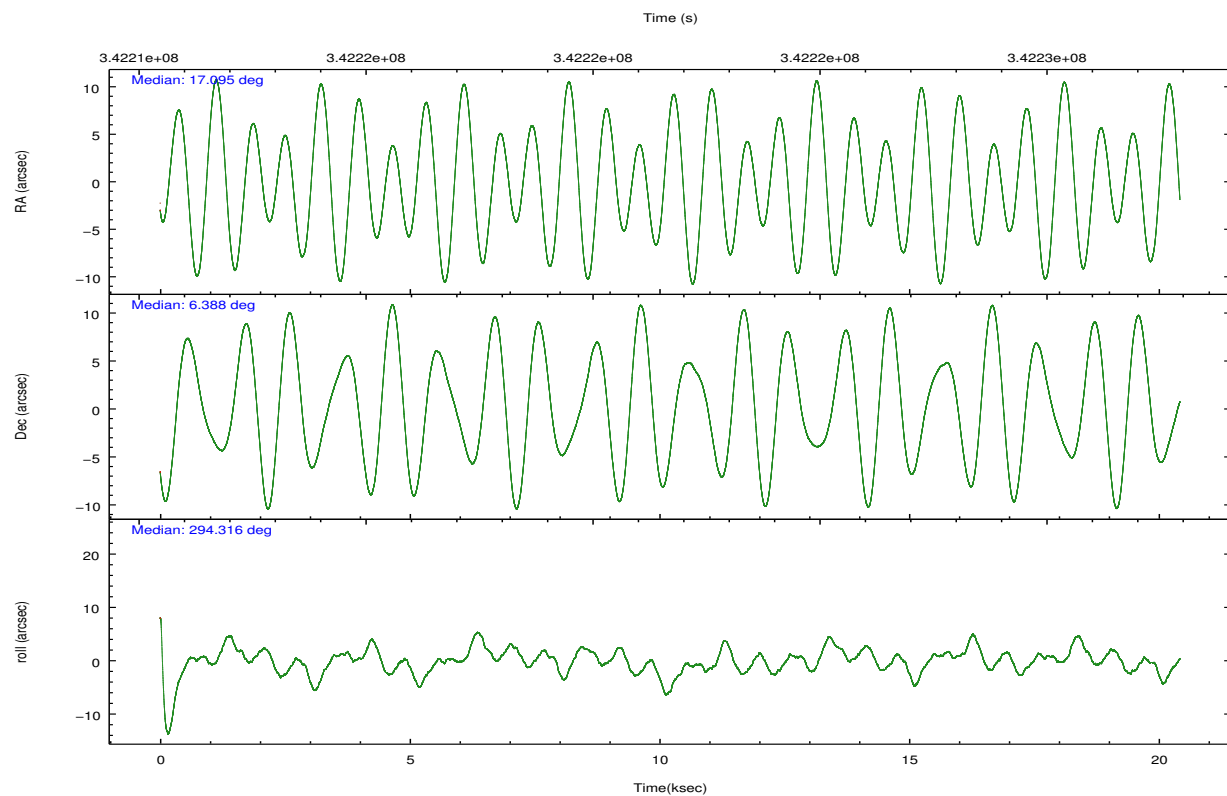
	<b>ccd 7</b>
grade 0 events	6038
	4%
grade 1 events	165
	0%
grade 2 events	13363
	8%
grade 3 events	6311
	4%
grade 4 events	6241
	4%
grade 5 events	14467
	9%
grade 6 events	33527
	22%
grade 7 events	69827
	46%

## 2.2 Compared Parameters

Parameter	Planned	Actual	Parameter	Planned	Actual
Instrument	ACIS	ACIS	Obspar format version number	7	7
Detector	ACIS-7	ACIS-7	Obspar file type	PREDICTED	ACTUAL
Grating	NONE	NONE	Obspar update status	NONE	UPDATED
Data mode	FAINT	FAINT	Number of optional ACIS chips dropped	0	0
Observation mode	POINTING	POINTING	On-chip summing requested	N	N
[deg] Pointing RA	17.072312	17.09490017276884	Subarray requested	CUSTOM	1/2
[deg] Pointing Dec	6.403924	6.388266885614403	Subarray start row	257	257
[deg] Pointing Roll	294.168985	294.3231102055976	Subarray row count	512	512
[mm] SIM focus pos	-0.684267	-0.6828225247311905	Alternating exposures requested	N	N
[mm] SIM defocus	0	0.001444936568705701	[s] Primary exposure time	0.000000	1.5
[mm] SIM translation stage pos	-190.132523	-190.1425803651734			
[mm] SIM translation stage offset	0	0.01005778216563158			
[s] Observation start time (MET)	342211664.184000	342210610.97845			
Observation start date	2008-11-04T18:46:39	2008-11-04T18:30:10			
[s] Observation end time (MET)	342231901.184000	342232125.72951			
Observation end date	2008-11-05T00:23:56	2008-11-05T00:28:45			
Read mode	TIMED	TIMED			

## 2.3 Aspect



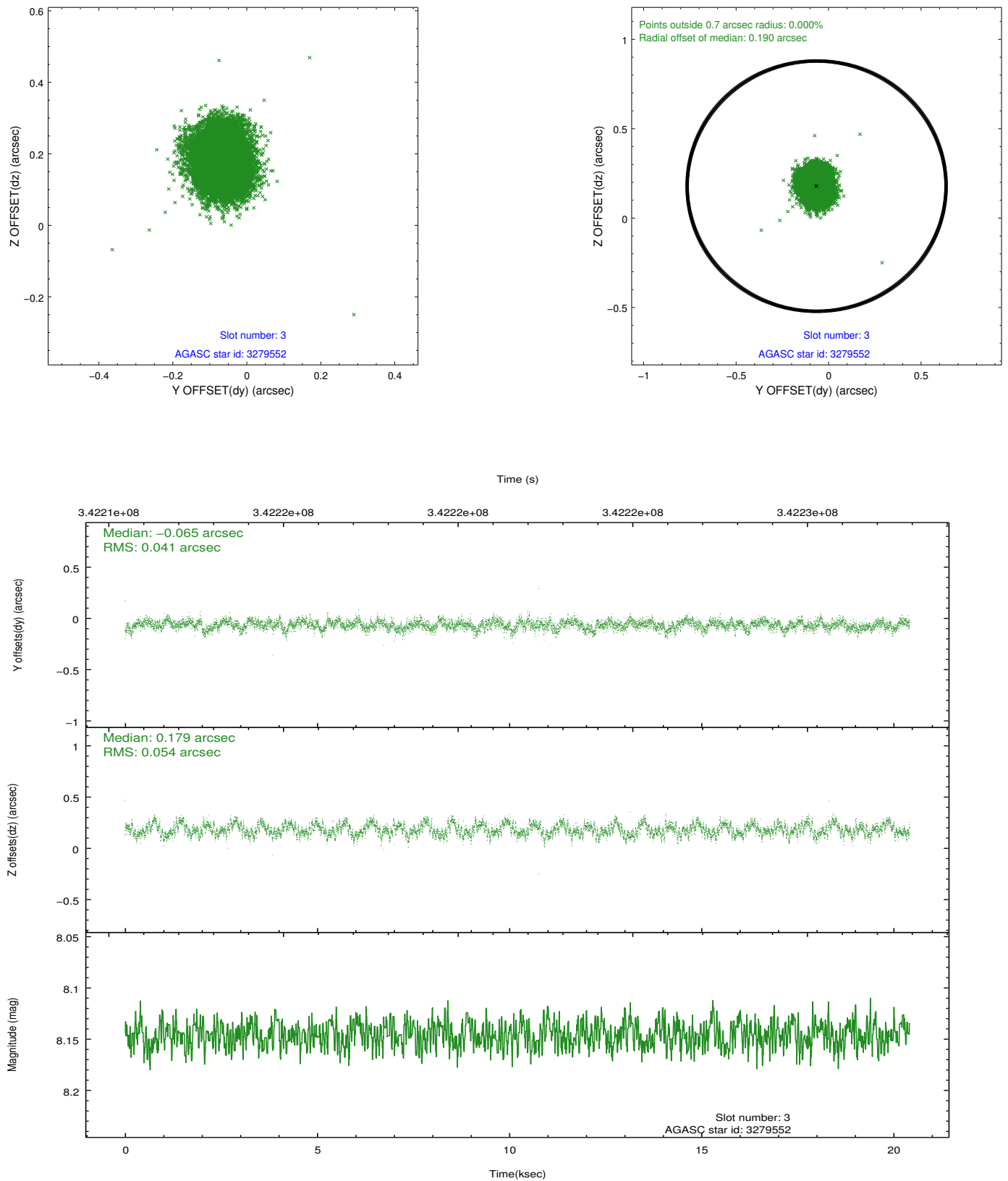


Slot Statistics

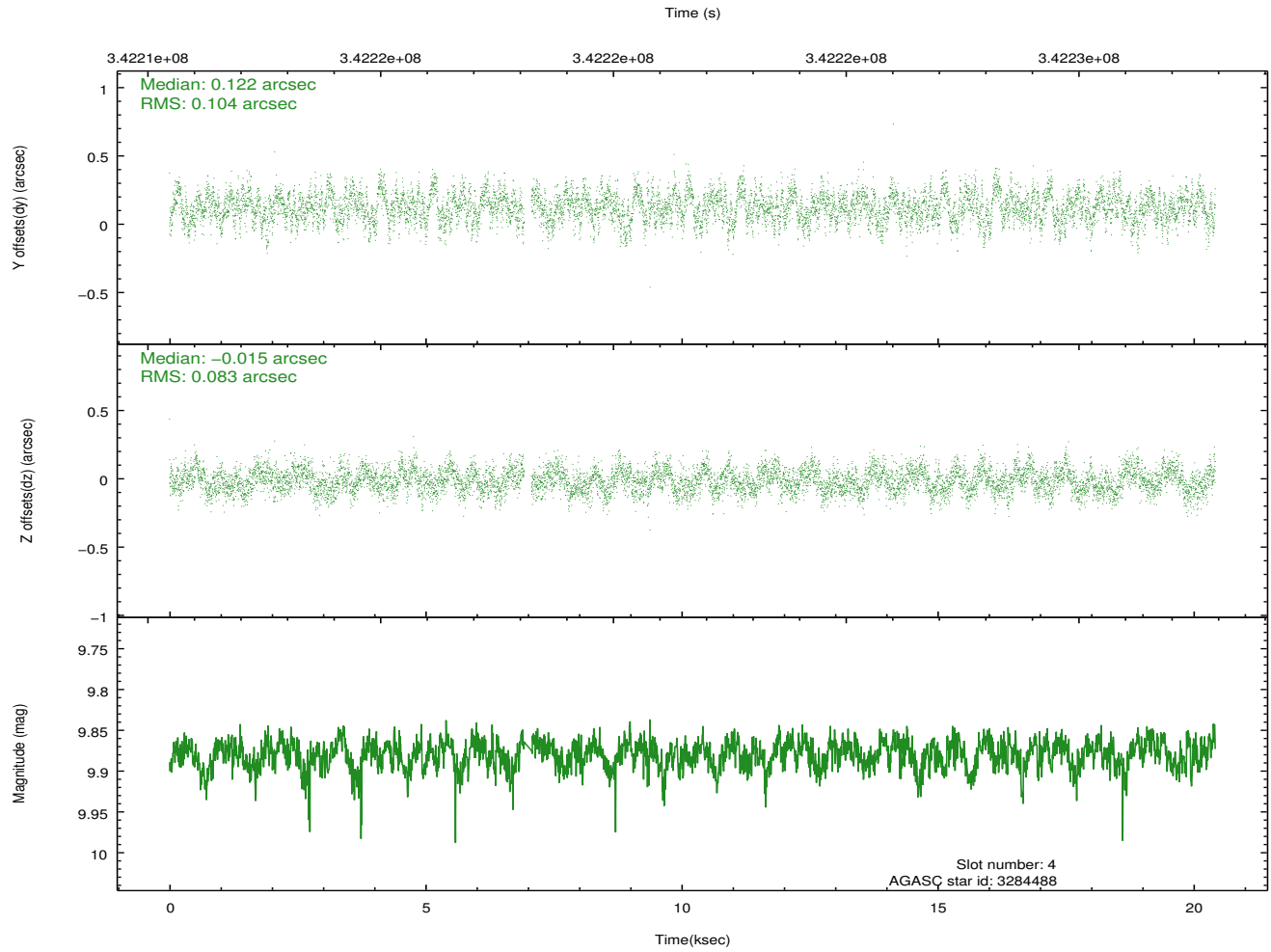
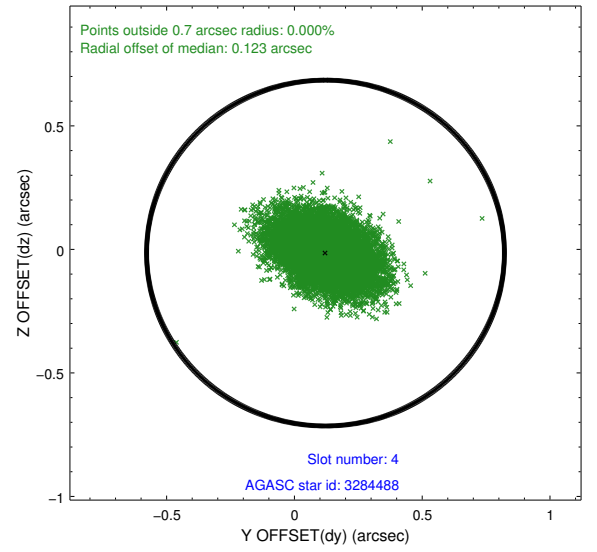
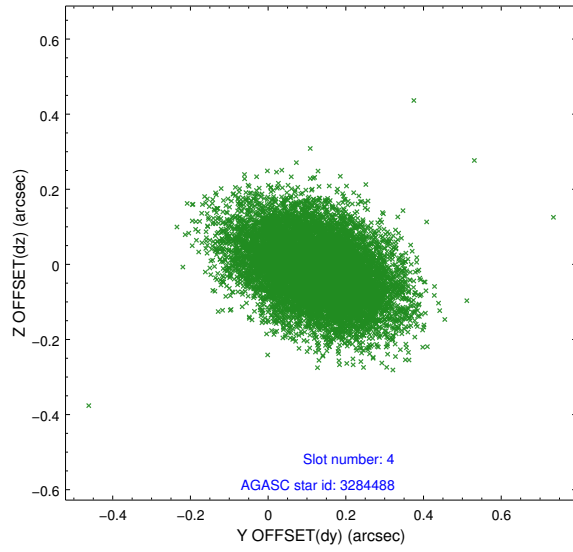
slot	status	id	mag	n_pts	med_dy	med_dz	dr1	dr2	ra	dec	mean_y	mean_z
0	FID	ACIS-S-2	6.95	4982	-0.025	-0.045	0.007	0.012	0.000000	0.000000	-766.44	-1734.41
1	FID	ACIS-S-4	7.03	4982	0.162	0.024	0.007	0.013	0.000000	0.000000	2146.95	173.93
2	FID	ACIS-S-5	7.07	4981	-0.168	0.029	0.007	0.011	0.000000	0.000000	-1819.18	167.84
3	GUIDE	3279552	8.15	9960	-0.065	0.179	0.073	0.114	16.682187	6.666769	-1434.67	-884.93
4	GUIDE	3284488	9.88	9872	0.122	-0.015	0.141	0.231	16.812598	5.615950	2208.10	-2009.78
5	GUIDE	3286488	9.67	9953	0.064	-0.130	0.152	0.248	17.315614	6.076043	1433.91	311.14
6	GUIDE	3413304	8.40	9961	-0.113	-0.037	0.137	0.204	17.643108	6.750584	-304.07	2373.06
7	OMITTED		0.00	0	0.000	0.000	0.000	0.000	0.000000	0.000000	0.00	0.00

## 2.4 Star Slots

### 2.4.1 Slot 3

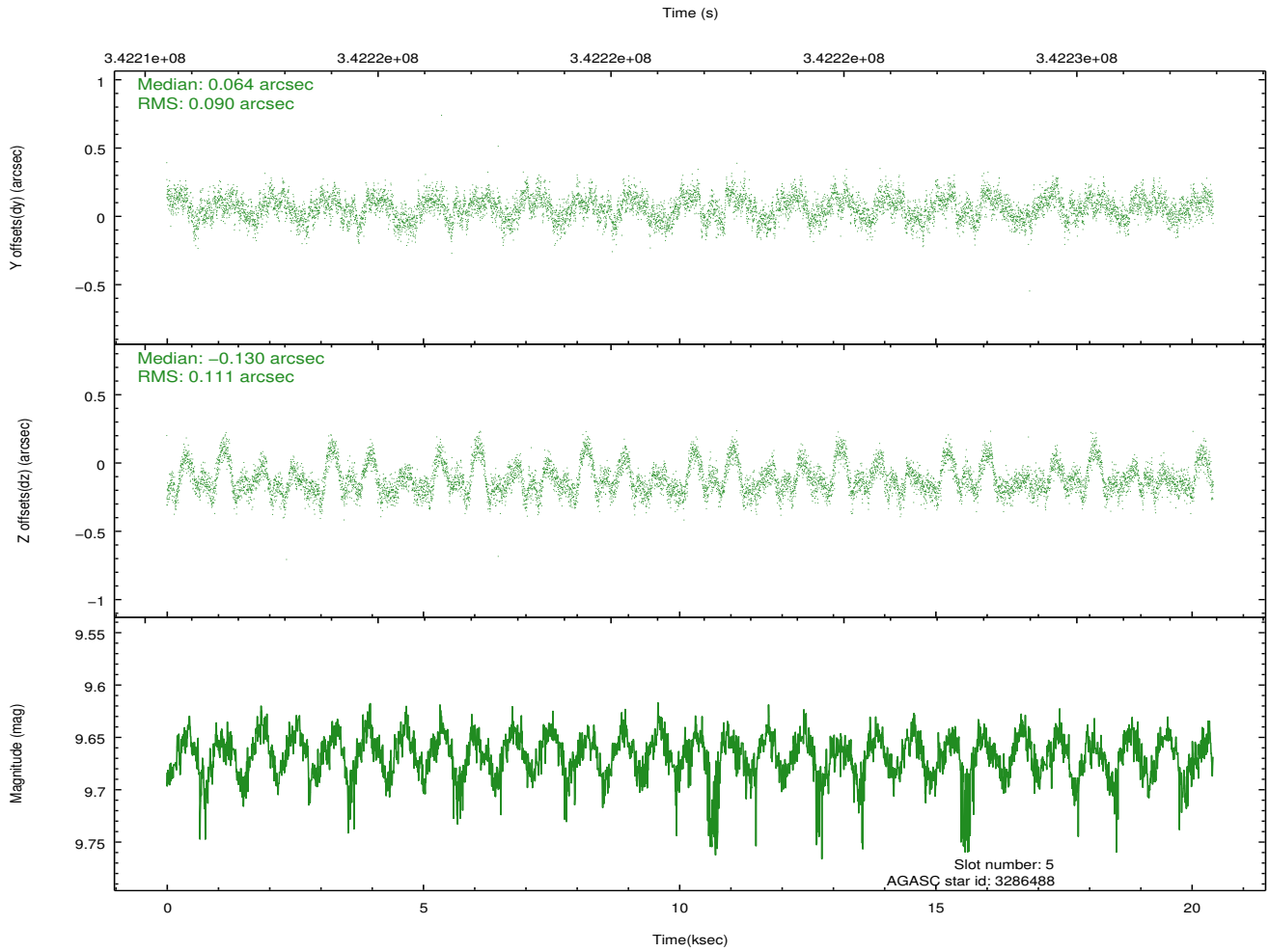
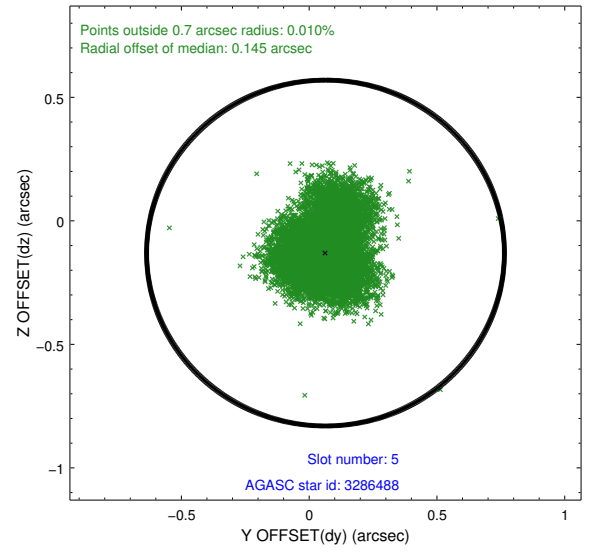
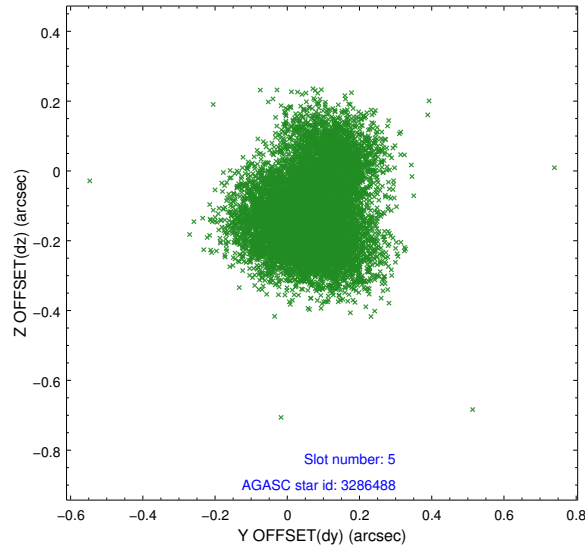


## 2.4.2 Slot 4

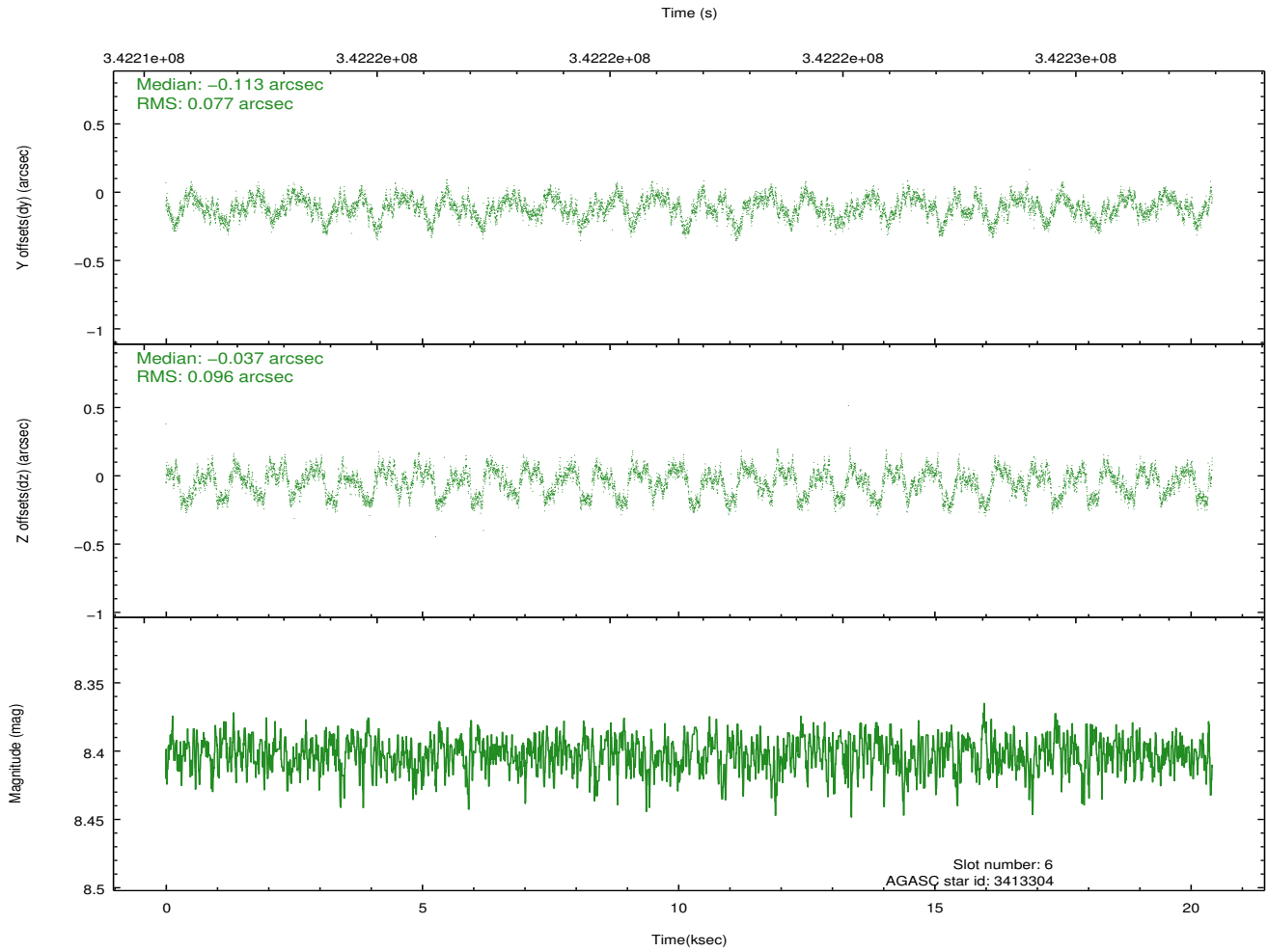
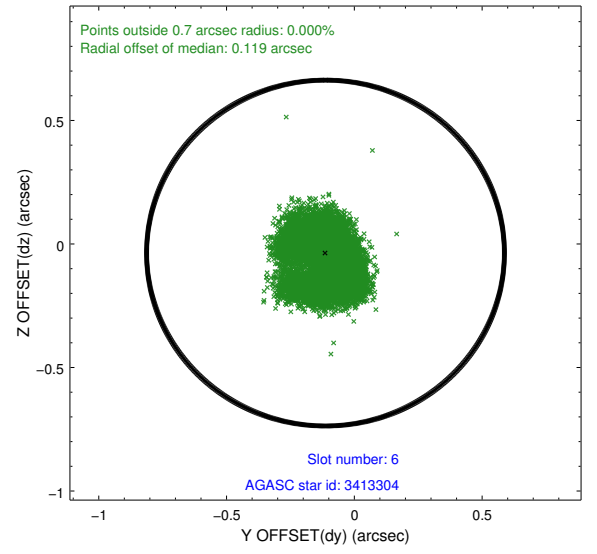
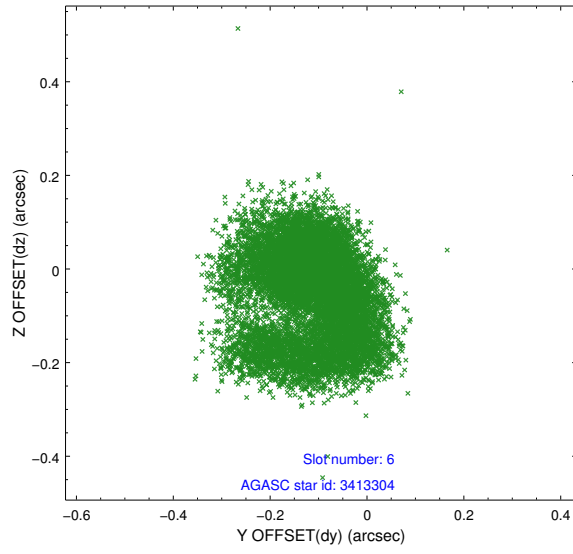




### 2.4.3 Slot 5

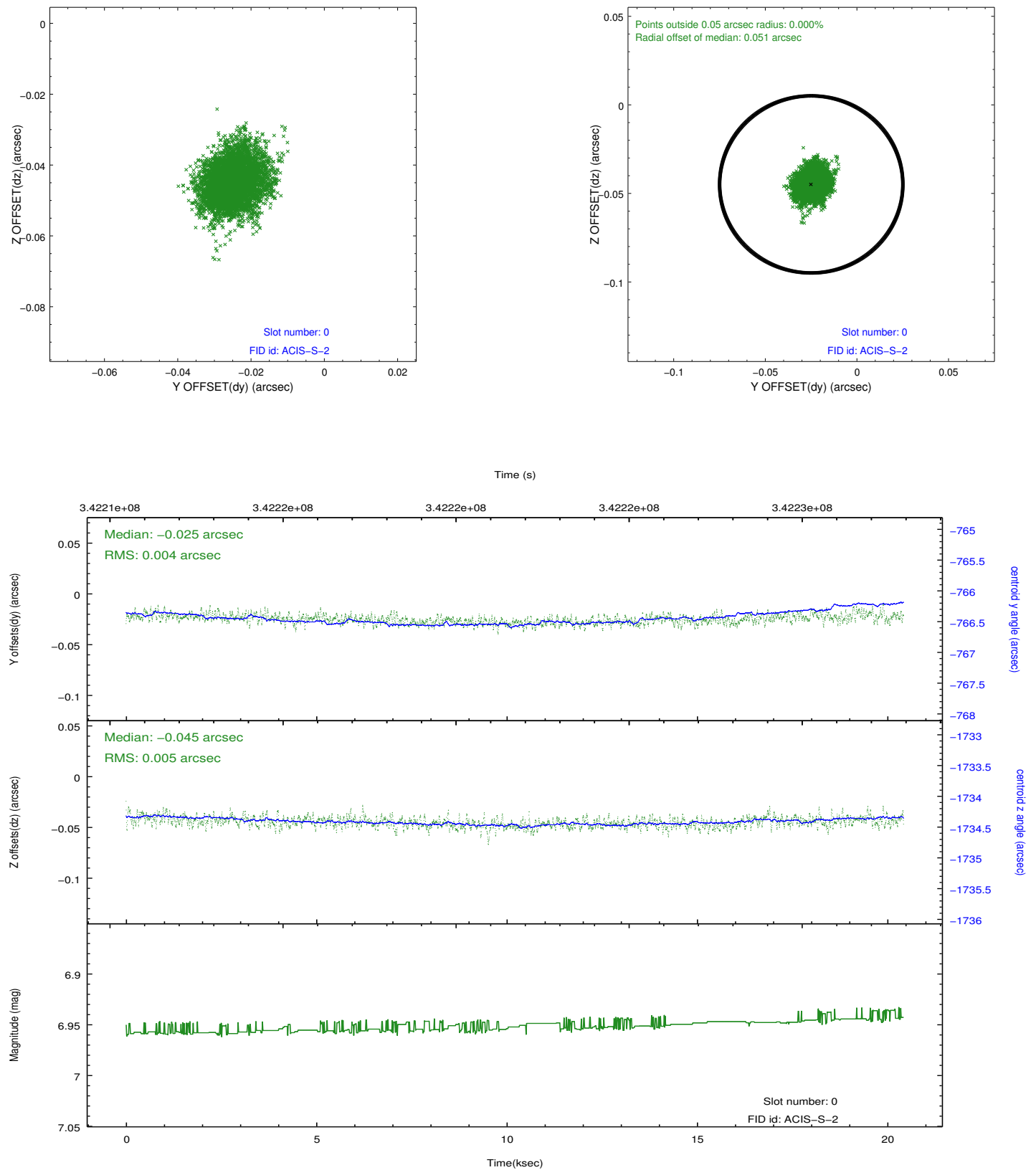


## 2.4.4 Slot 6

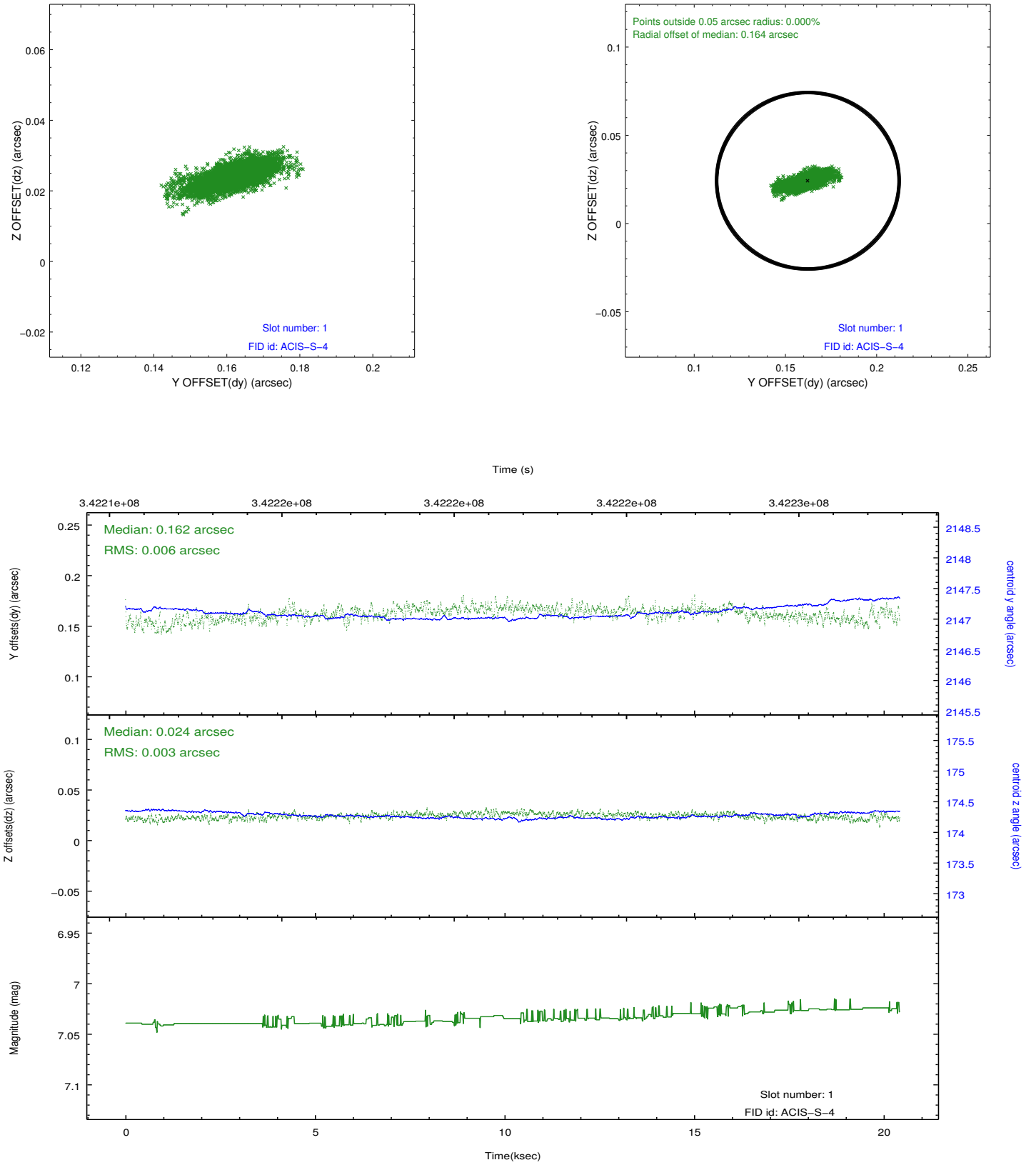


## 2.5 FID Slots

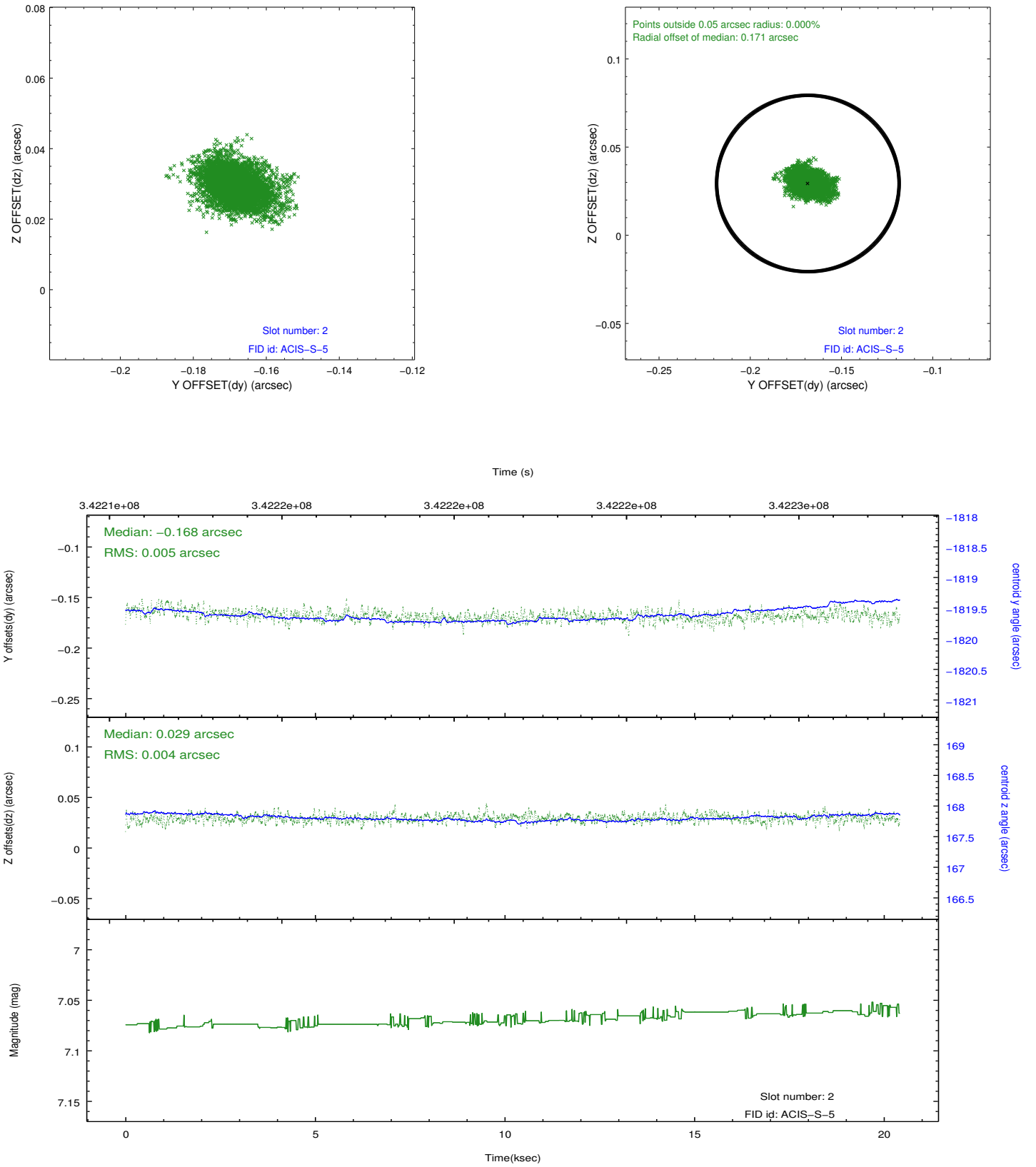
### 2.5.1 Slot 0



## 2.5.2 Slot 1



### 2.5.3 Slot 2



## A Summary

### A.1 Status

V&V Scientist	Jen Lauer
V&V Date (YYYY-MM-DD)	2012.05.31
V&V Edition	1
V&V Disposition and Status	OK
V&V Charge Time	20.421

### A.2 Comments

The guide star in slot 7 was removed from the aspect solution due to poor data quality. The aspect solution is improved by the removal of this guide star from the solution.