

V&V Reference Report

L2 ASCDS Version : 8.4.4

Observation 8950 - L2 Version 2
Chandra X-Ray Center

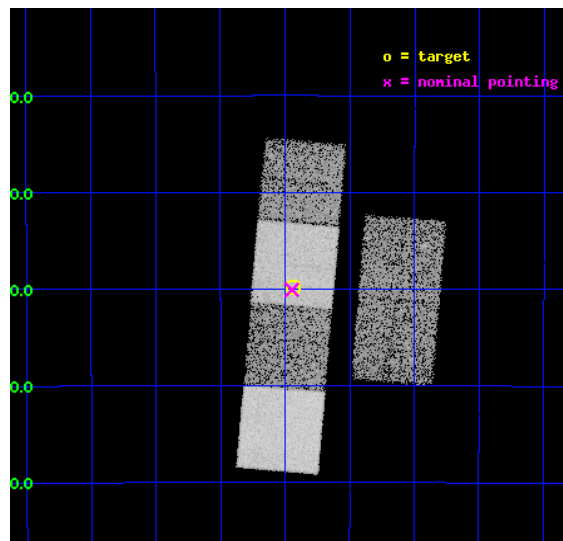
L2 Processing Date : May 19 2012

Contents

1	Front	2
2	OBI	3
2.1	OBI	3
2.1.1	Images	3
2.1.2	Bias	3
2.1.3	Parameters	4
2.1.4	Events	4
2.2	Compared Parameters	5
2.3	Aspect	6
2.4	Star Slots	9
2.4.1	Slot 3	9
2.4.2	Slot 4	10
2.4.3	Slot 5	11
2.4.4	Slot 6	12
2.4.5	Slot 7	13
2.5	FID Slots	14
2.5.1	Slot 0	14
2.5.2	Slot 1	15
2.5.3	Slot 2	16
A	Summary	17
A.1	Status	17
A.2	Comments	17

1 Front

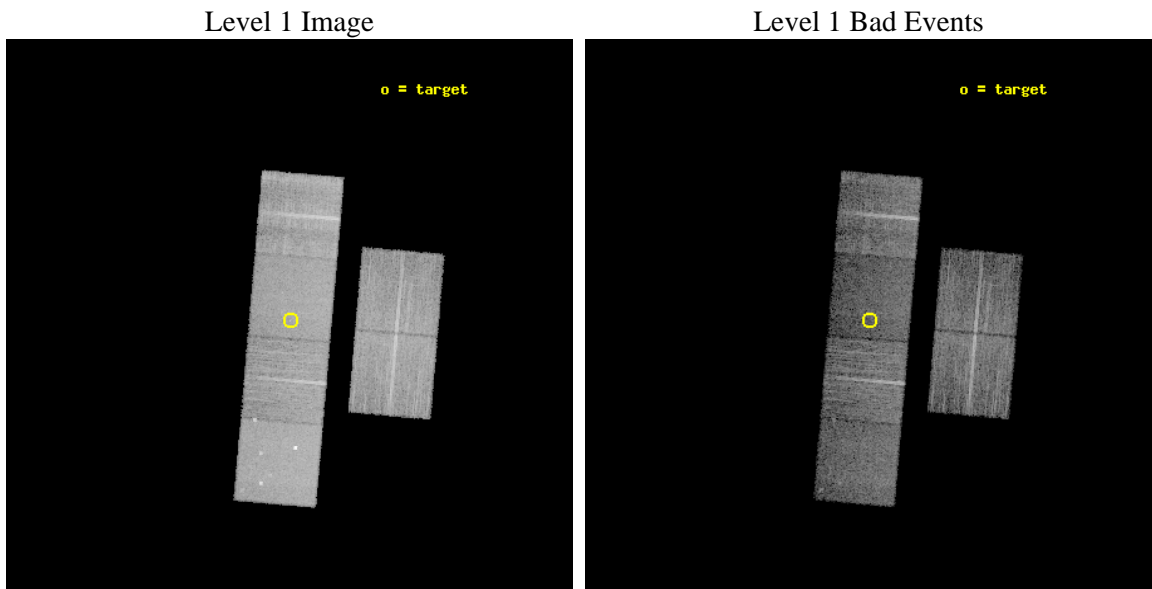
seq_num	300206	Sequence number
obs_id	8950	Observation id
title	A Chandra Legacy Survey of Dynamically Active Globular Clusters	Pr
observer	Prof. David Pooley	Principal investigator
object	NGC 6638	Source name
dtcycle	0	
cycle	P	events from which exps? Prim/Second/Both
ra_targ	277.73375	Observer's specified target RA [deg]
dec_targ	-25.4975	Observer's specified target Dec [deg]
ra_nom	277.73692844537	Nominal RA [deg]
dec_nom	-25.501330115371	Nominal Dec [deg]
roll_nom	274.94608349988	Nominal Roll [deg]
revision	2	Processing version of data
ontime	9039.999966383	Sum of GTIs [s]
livetime	8925.5300435742	Livetime [s]
ontime2	9039.999966383	Sum of GTIs [s]
ontime3	9039.999966383	Sum of GTIs [s]
ontime5	9039.999966383	Sum of GTIs [s]
ontime6	9039.999966383	Sum of GTIs [s]
ontime7	9039.999966383	Sum of GTIs [s]
ontime8	9039.999966383	Sum of GTIs [s]
l2events	113922	Number of level 2 events



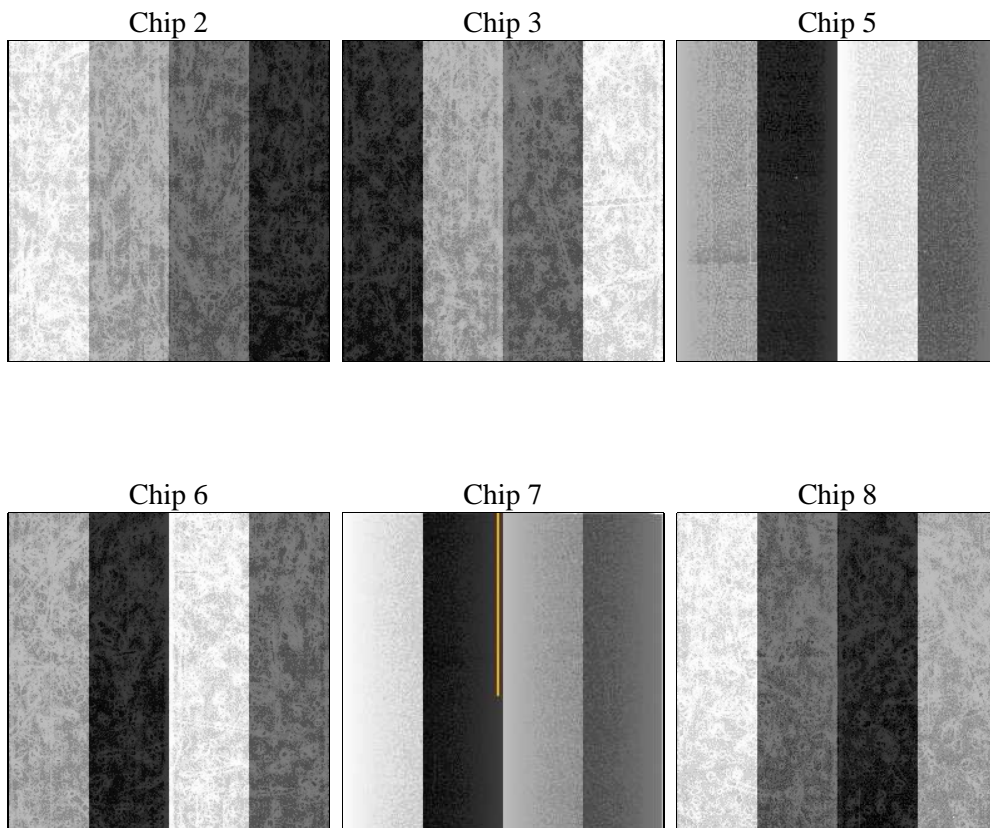
2 OBI

2.1 OBI

2.1.1 Images



2.1.2 Bias



2.1.3 Parameters

obi_num	0	Obi number	sched_exp_time	9000.448000	[s] Scheduled observation exposure time
ascdsver	8.4.4	Processing system revision	ontime	9039.999966383	Sum of GTIs [s]
caldsver	4.4.9	 	ontime2	9039.999966383	Sum of GTIs [s]
date	2012-05-19T21:08:36	Date and time of file creation	ontime3	9039.999966383	Sum of GTIs [s]
revision	2	Processing version of data	ontime5	9039.999966383	Sum of GTIs [s]
			ontime6	9039.999966383	Sum of GTIs [s]
			ontime7	9039.999966383	Sum of GTIs [s]
			ontime8	9039.999966383	Sum of GTIs [s]
			l1events	506193	Number of level 1 events

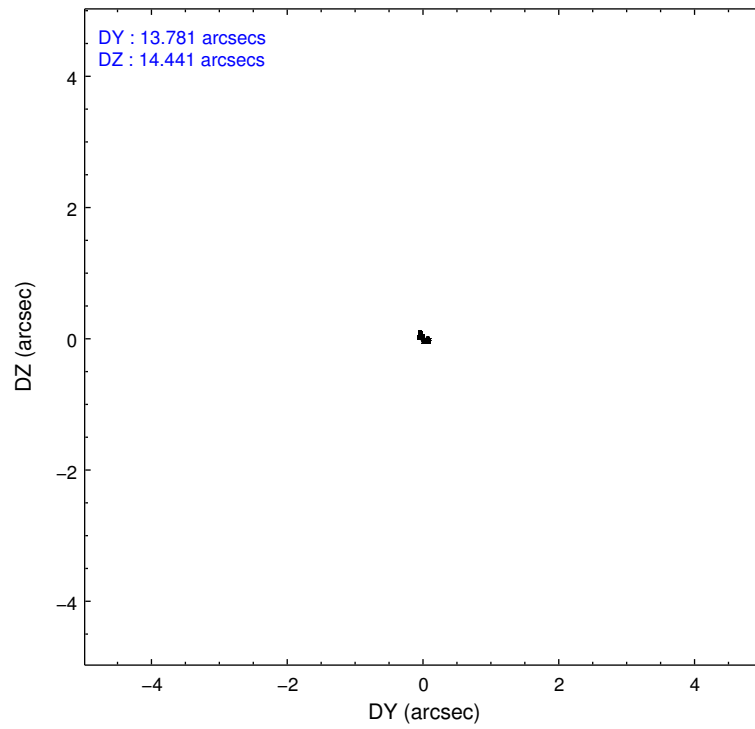
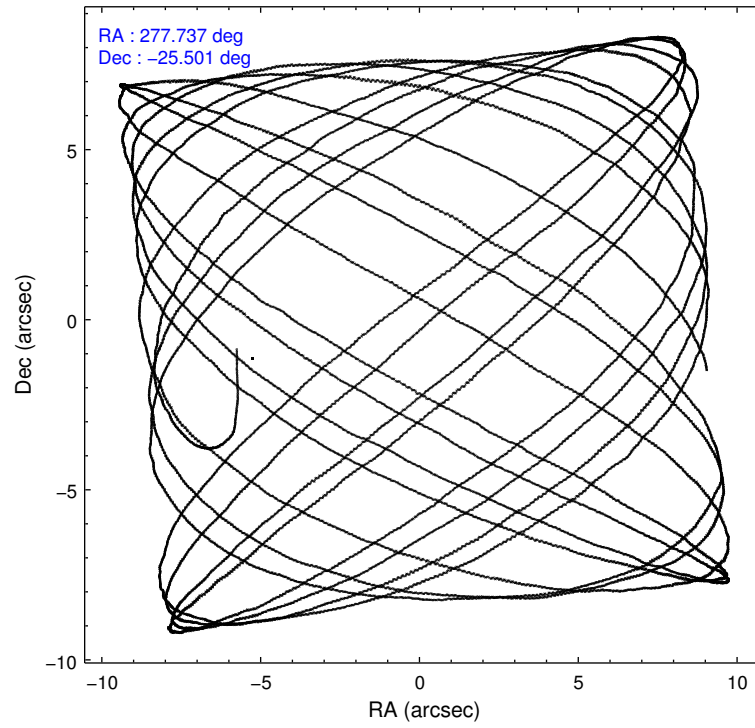
2.1.4 Events

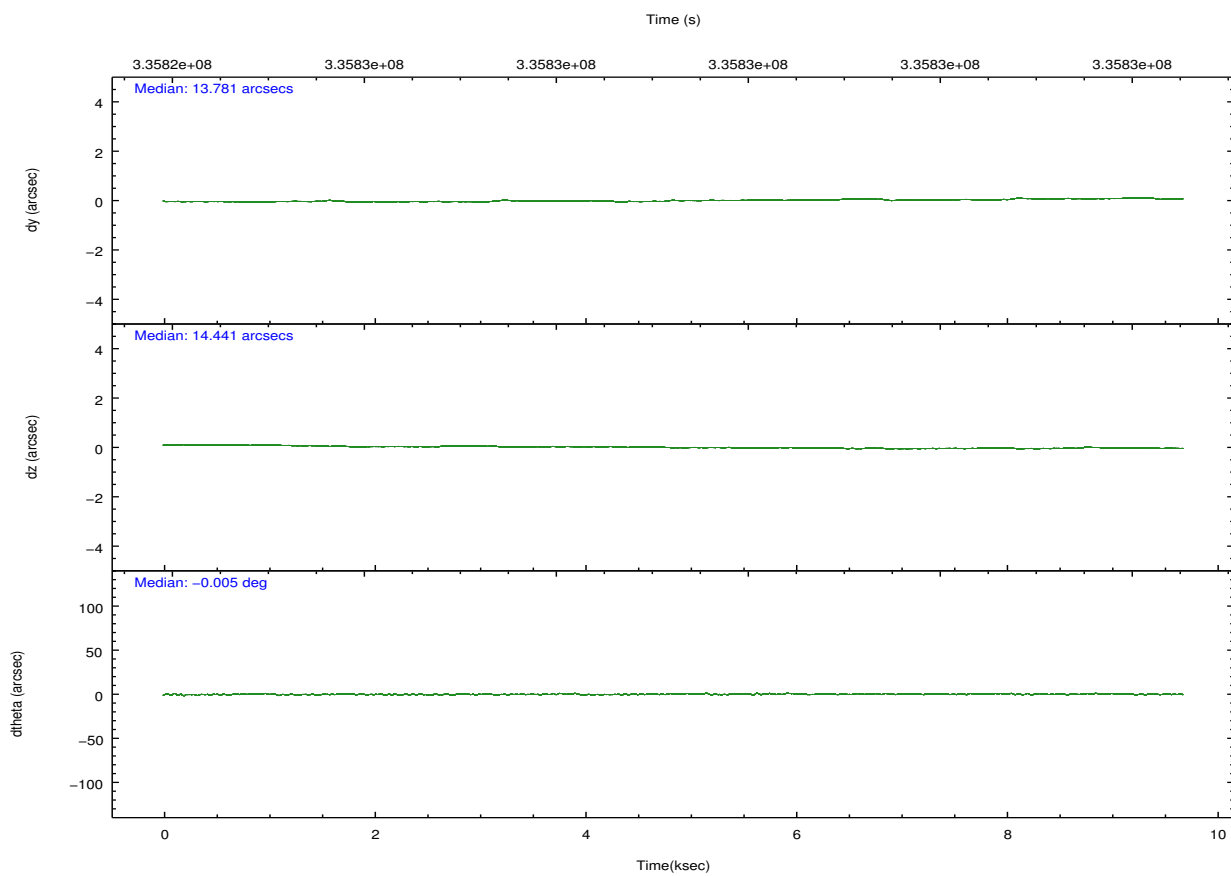
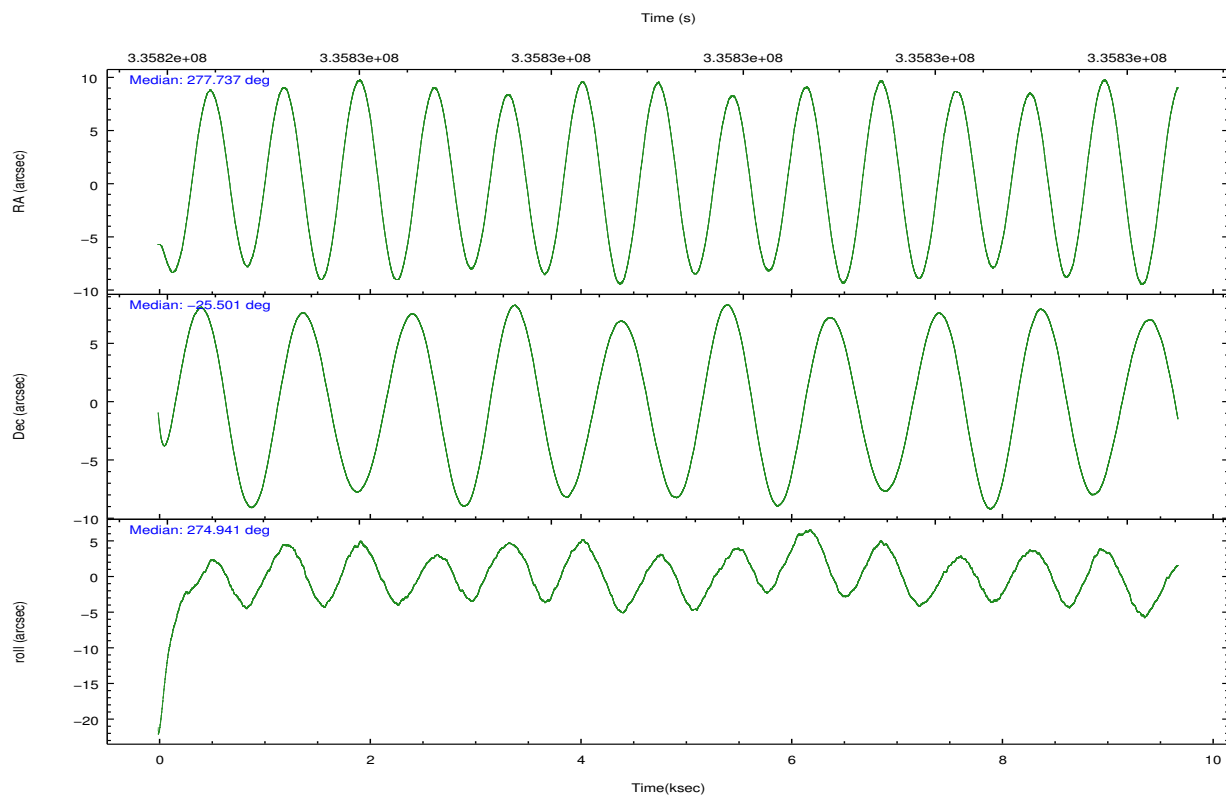
	ccd 2	ccd 3	ccd 5	ccd 6	ccd 7	ccd 8		ccd 2	ccd 3	ccd 5	ccd 6	ccd 7	ccd 8
level 1 events	79767	69082	105141	75958	83332	92913	grade 0 events	3126	2906	7197	3251	4006	6958
rejected events	71960	61641	51686	67607	44611	69630		3%	4%	6%	4%	4%	7%
rejected %	90%	89%	49%	89%	53%	74%	grade 1 events	62	43	283	31	127	65
								0%	0%	0%	0%	0%	0%
							grade 2 events	1791	1555	15766	1827	8043	5303
								2%	2%	14%	2%	9%	5%
							grade 3 events	775	821	2179	839	3460	2446
								0%	1%	2%	1%	4%	2%
							grade 4 events	791	762	2025	816	3563	2280
								0%	1%	1%	1%	4%	2%
							grade 5 events	2447	2934	8015	2996	8674	4328
								3%	4%	7%	3%	10%	4%
							grade 6 events	1331	1404	26334	1625	19672	6303
								1%	2%	25%	2%	23%	6%
							grade 7 events	69444	58657	43342	64573	35787	65230
								87%	84%	41%	85%	42%	70%

2.2 Compared Parameters

Parameter	Planned	Actual	Parameter	Planned	Actual
Instrument	ACIS	ACIS	Obspar format version number	7	7
Detector	ACIS-235678	ACIS-235678	Obspar file type	PREDICTED	ACTUAL
Grating	NONE	NONE	Obspar update status	NONE	UPDATED
Data mode	VFAINT	VFAINT	CCD I0 on	N	N
Observation mode	POINTING	POINTING	CCD I1 on	N	N
[deg] Pointing RA	277.719267	277.7369284453712	CCD I2 on	O1	Y
[deg] Pointing Dec	-25.479198	-25.50133011537122	CCD I3 on	O2	Y
[deg] Pointing Roll	274.781867	274.9460834998761	CCD S0 on	N	N
[mm] SIM focus pos	-0.684267	-0.6828225247311905	CCD S1 on	Y	Y
[mm] SIM defocus	0	0.001444936568705701	CCD S2 on	Y	Y
[mm] SIM translation stage pos	-190.132523	-190.145094680475	CCD S3 on	Y	Y
[mm] SIM translation stage offset	0	0.01257209746719923	CCD S4 on	Y	Y
[s] Observation start time (MET)	335825049.184000	335823794.6641	CCD S5 on	N	N
Observation start date	2008-08-22T20:43:04	2008-08-22T20:23:14	Number of optional ACIS chips dropped	0	0
[s] Observation end time (MET)	335834050.184000	335834270.16461	On-chip summing requested	N	N
Observation end date	2008-08-22T23:13:05	2008-08-22T23:17:50	Subarray requested	NONE	NONE
Read mode	TIMED	TIMED	Alternating exposures requested	N	N
			[s] Primary exposure time	0.000000	3.2

2.3 Aspect



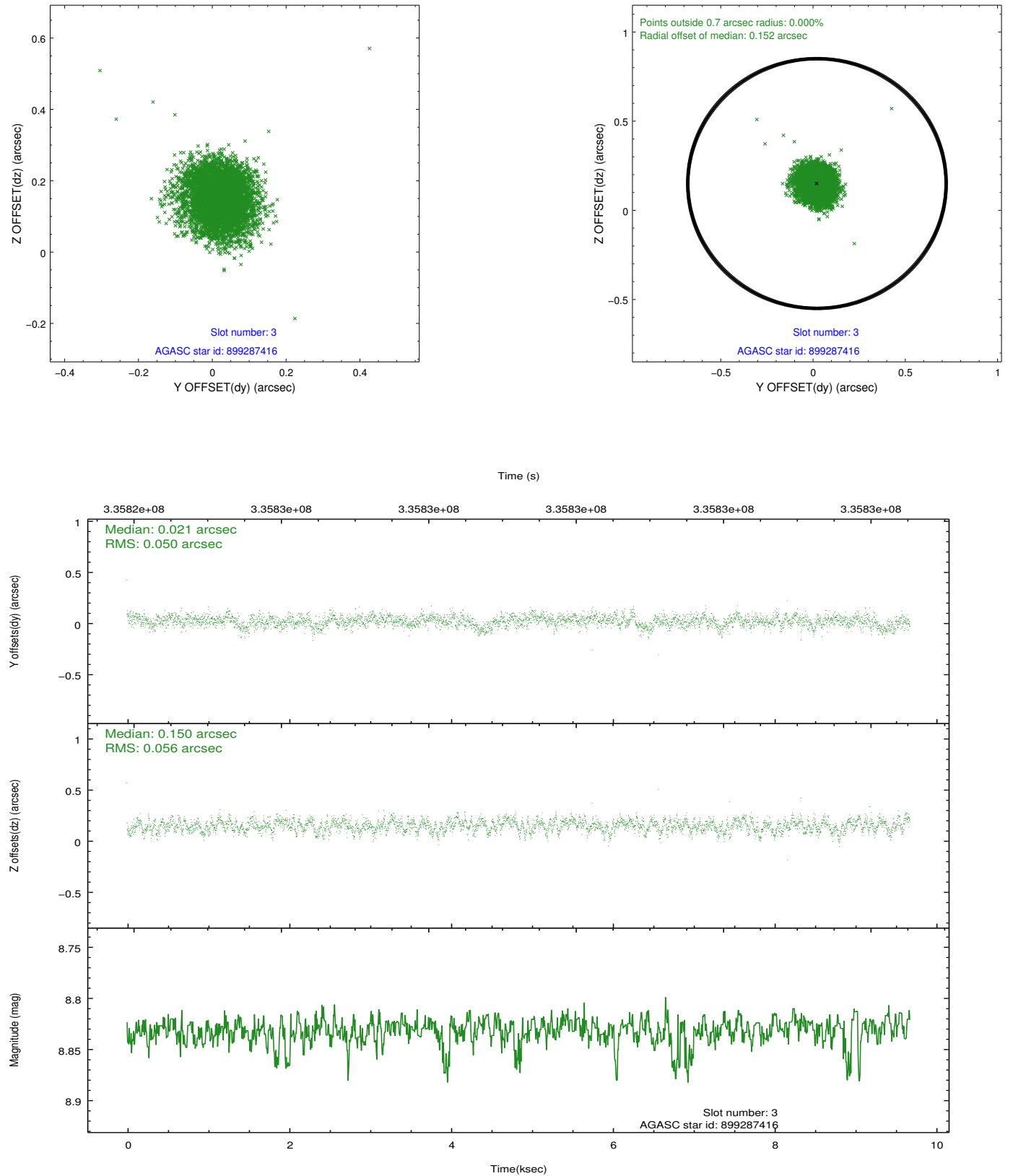


Slot Statistics

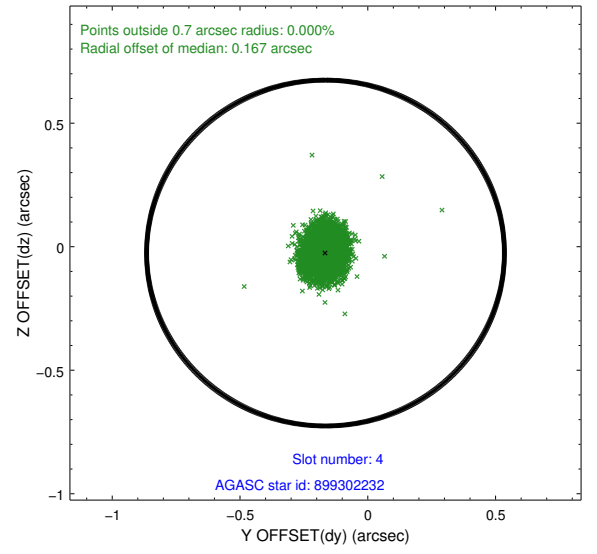
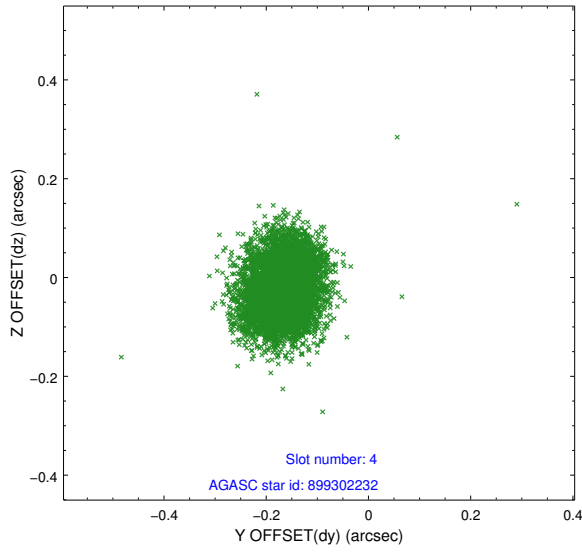
slot	status	id	mag	n_pts	med_dy	med_dz	dr1	dr2	ra	dec	mean_y	mean_z
0	FID	ACIS-S-1	7.01	2361	0.038	-0.004	0.007	0.012	0.000000	0.000000	929.35	-1731.35
1	FID	ACIS-S-4	7.01	2361	0.141	-0.011	0.008	0.013	0.000000	0.000000	2147.16	172.24
2	FID	ACIS-S-5	7.04	2361	-0.206	0.028	0.007	0.014	0.000000	0.000000	-1819.06	166.48
3	GUIDE	899287416	8.83	4719	0.021	0.150	0.079	0.126	277.466746	-26.025402	1893.83	-976.85
4	GUIDE	899302232	8.37	4722	-0.166	-0.026	0.075	0.115	277.190372	-25.274839	-872.28	-1654.84
5	GUIDE	899307392	8.99	4718	-0.275	0.239	0.069	0.113	278.029638	-24.900381	-1990.79	1183.51
6	GUIDE	899285536	9.36	4720	0.409	-0.369	0.122	0.205	277.034194	-26.181359	2341.12	-2416.61
7	GUIDE	899416976	8.35	4718	0.015	0.003	0.094	0.147	278.437939	-25.448894	93.24	2336.29

2.4 Star Slots

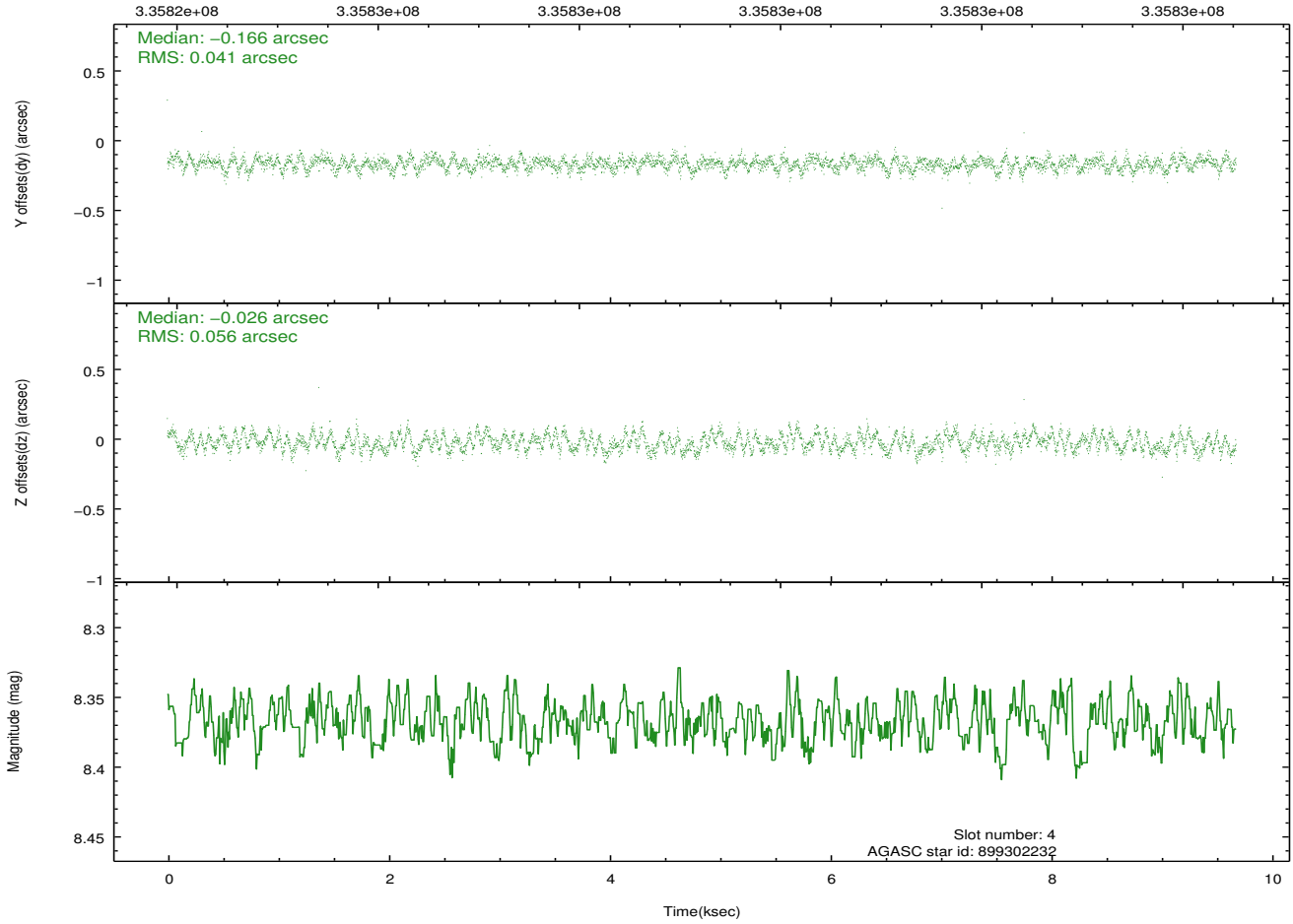
2.4.1 Slot 3



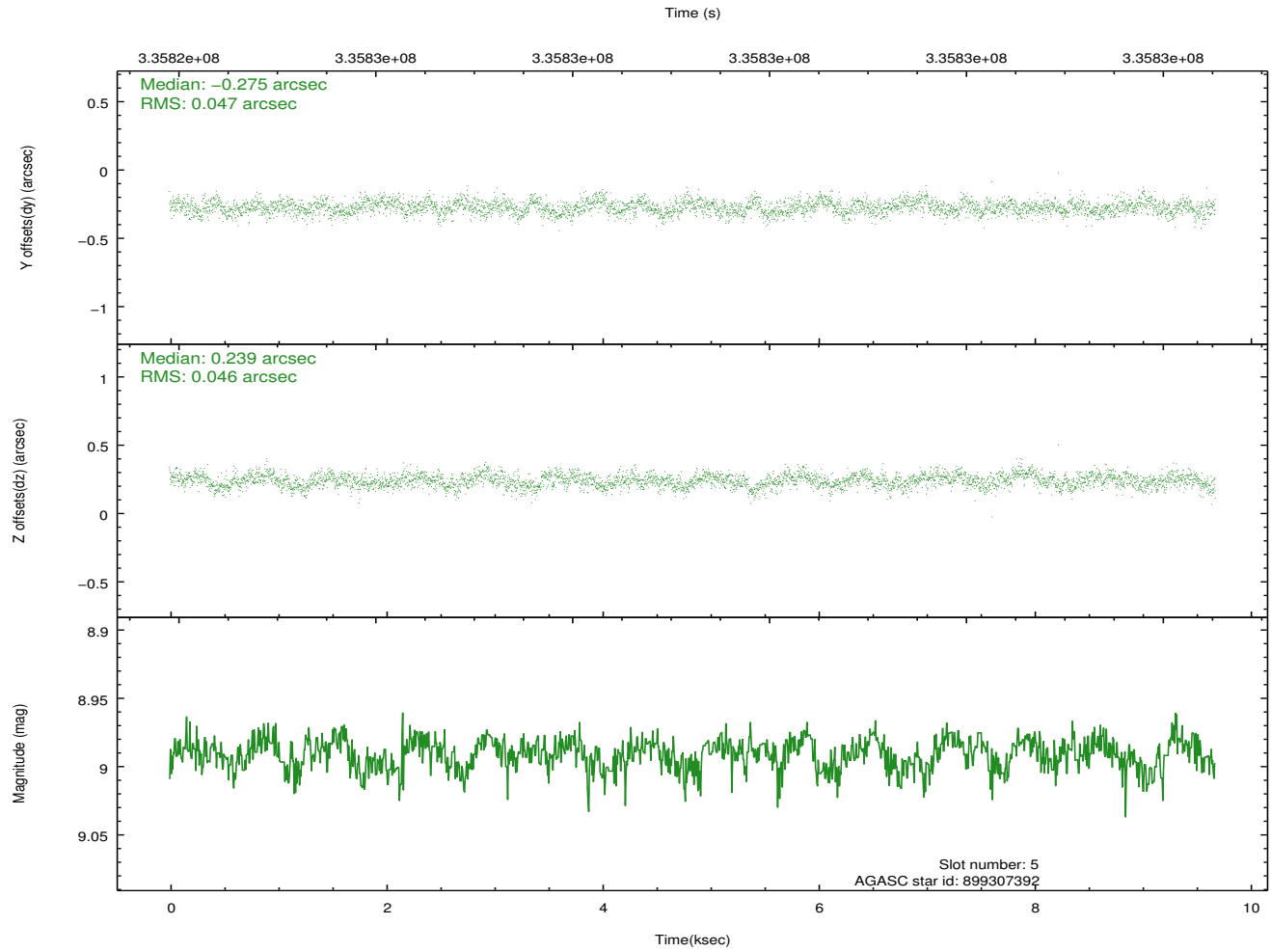
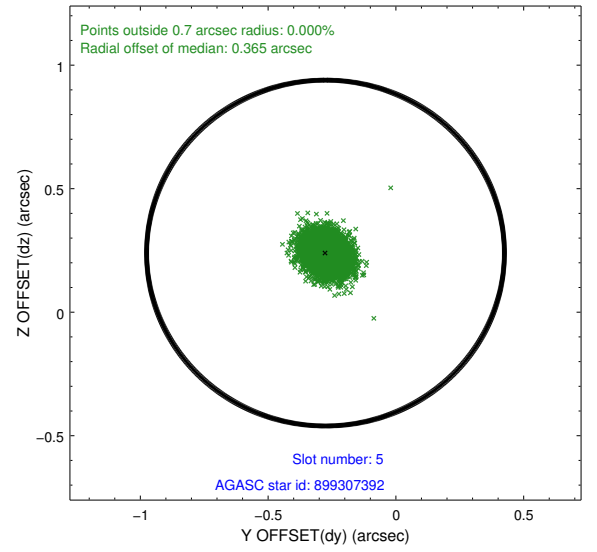
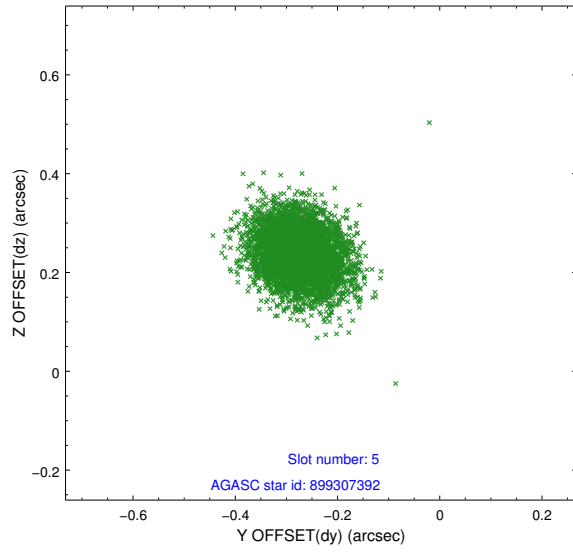
2.4.2 Slot 4



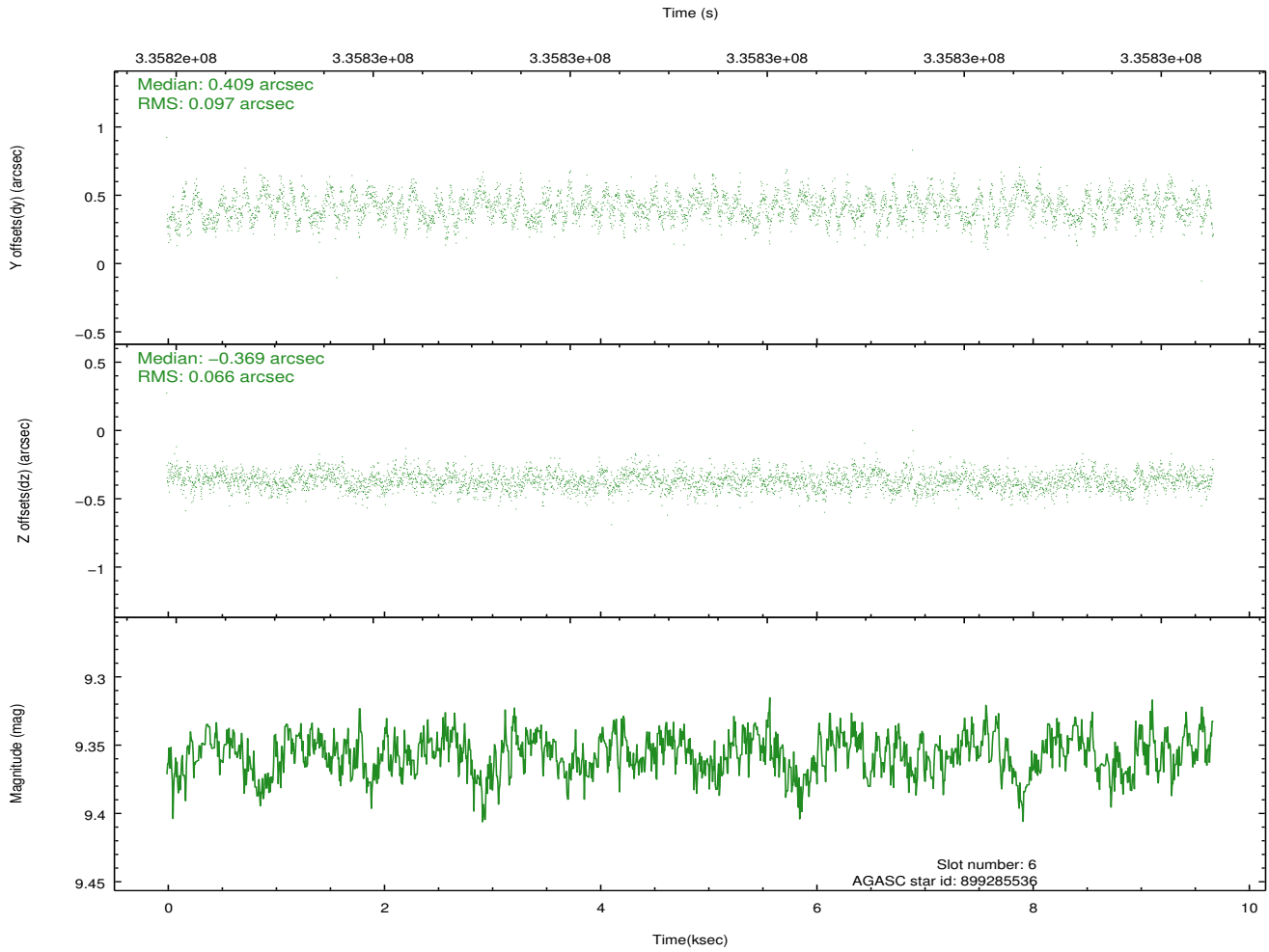
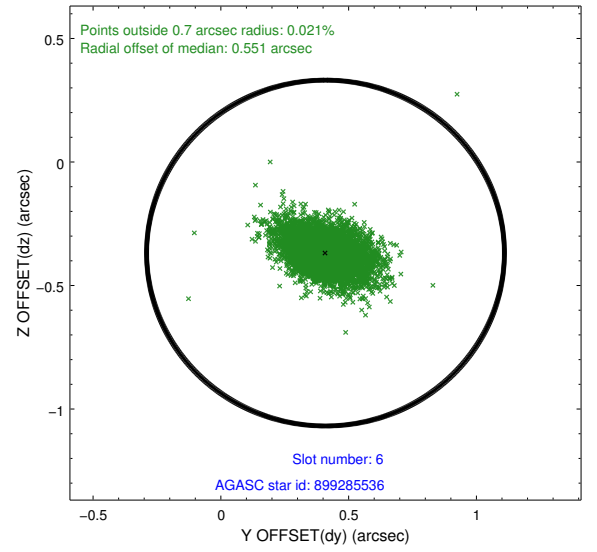
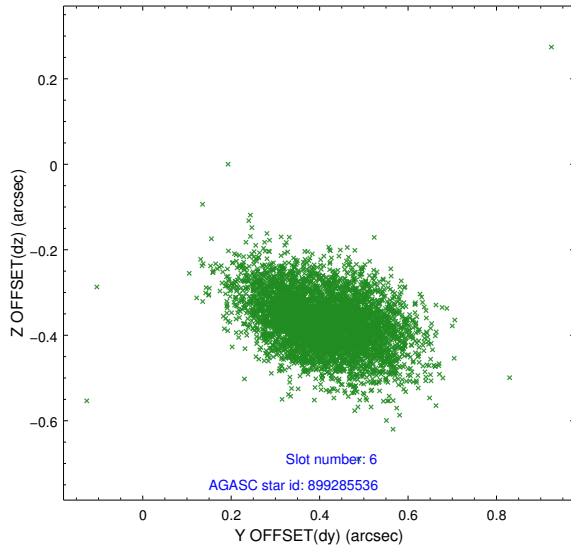
Time (s)



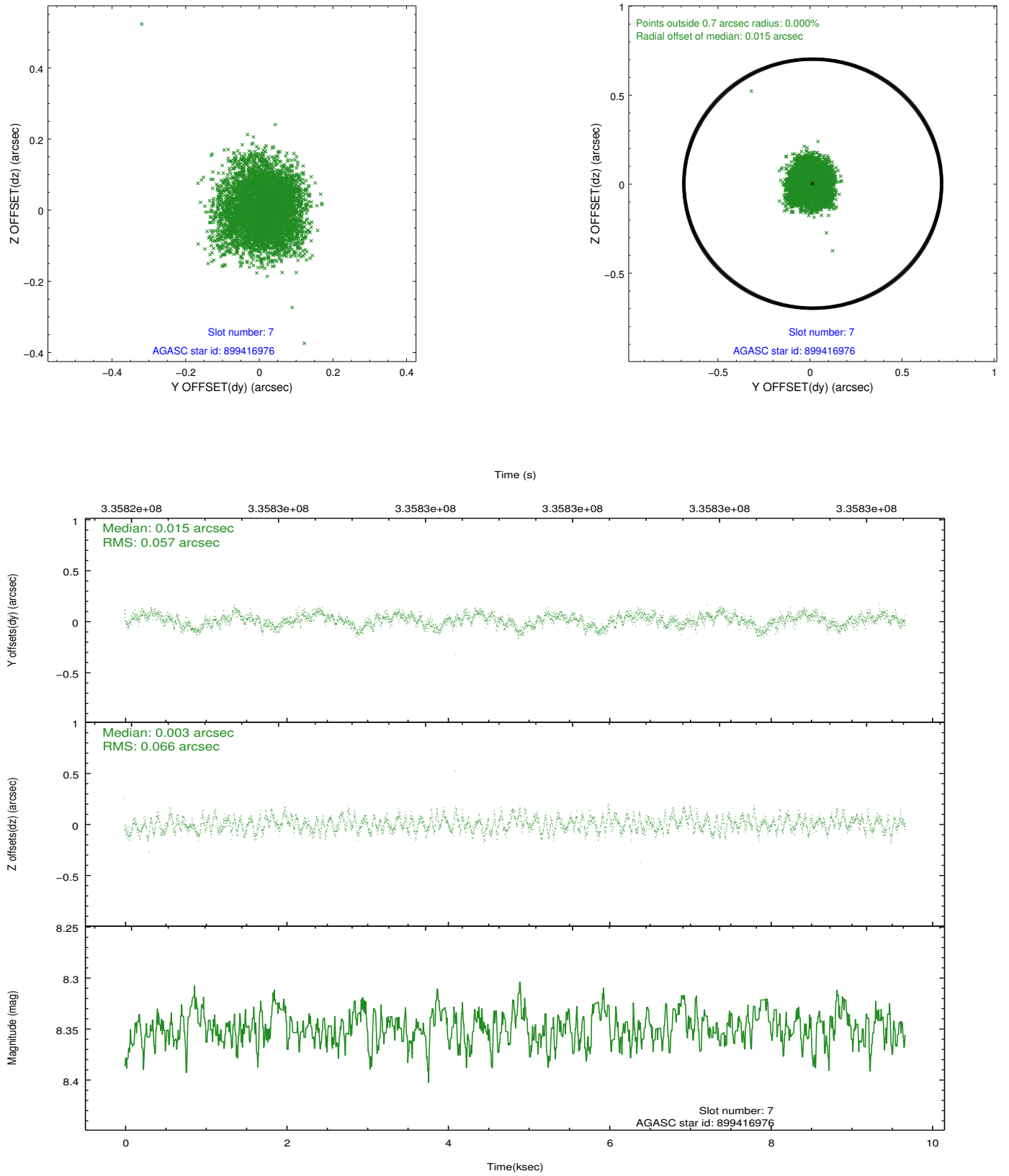
2.4.3 Slot 5



2.4.4 Slot 6

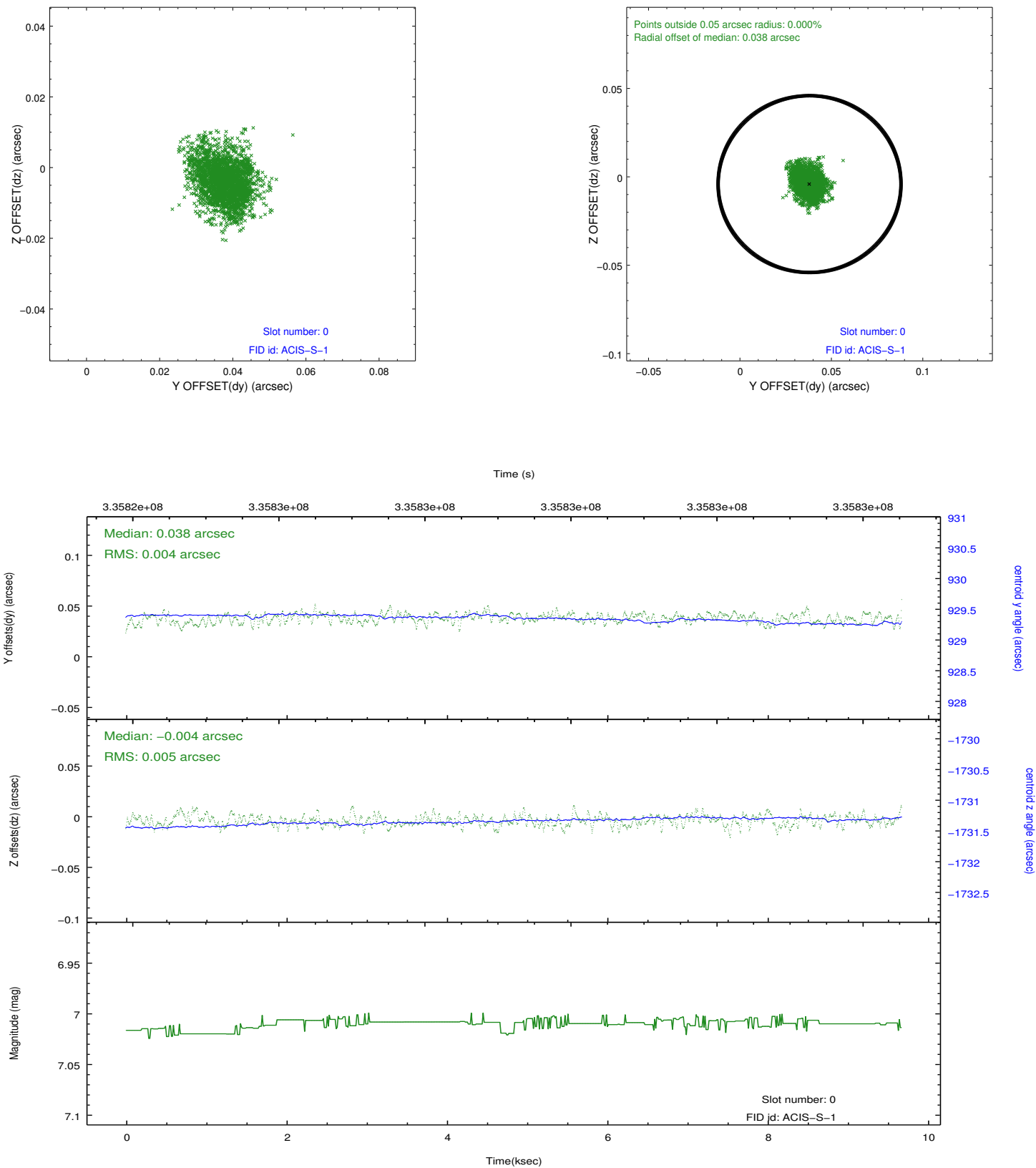


2.4.5 Slot 7

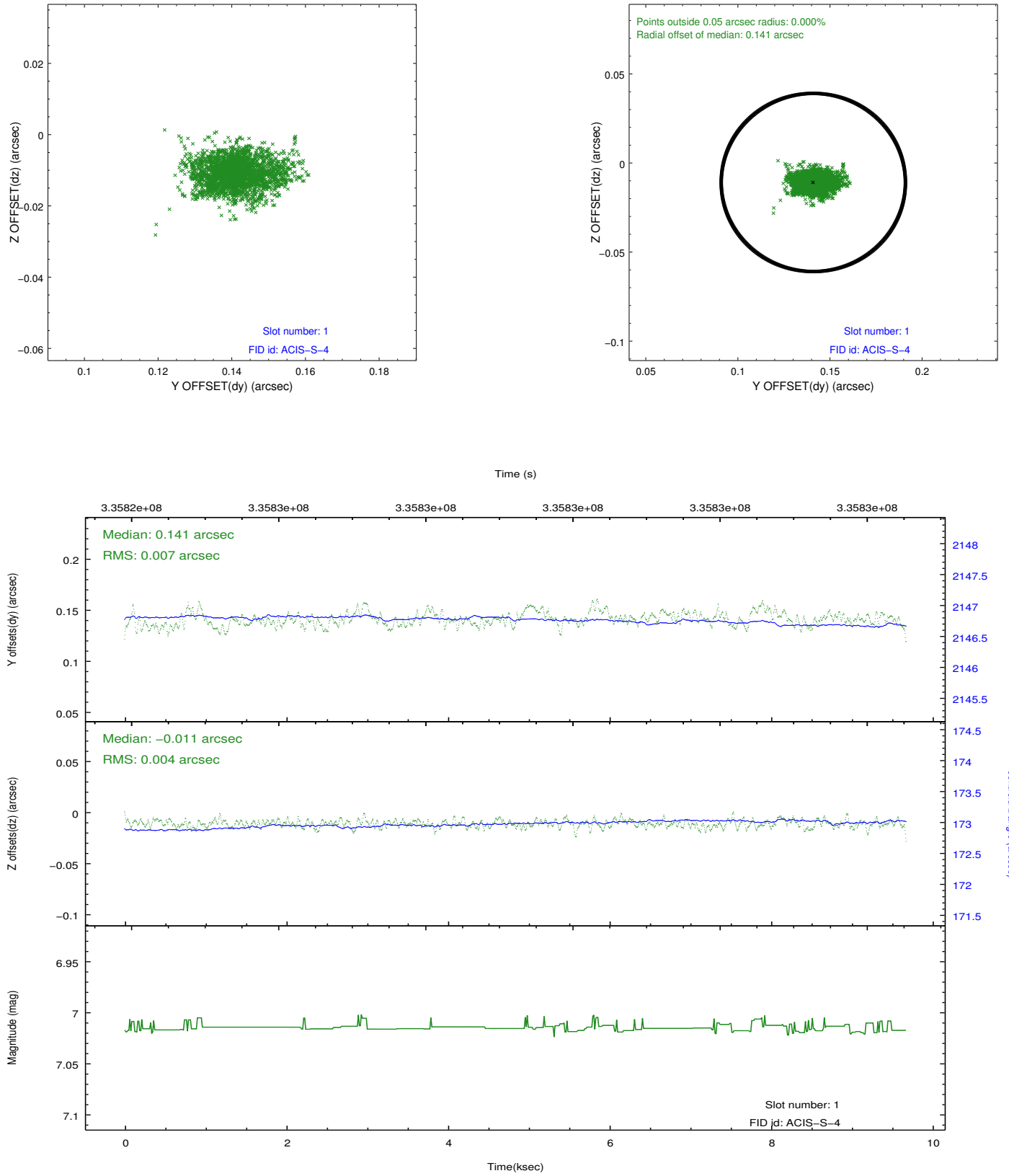


2.5 FID Slots

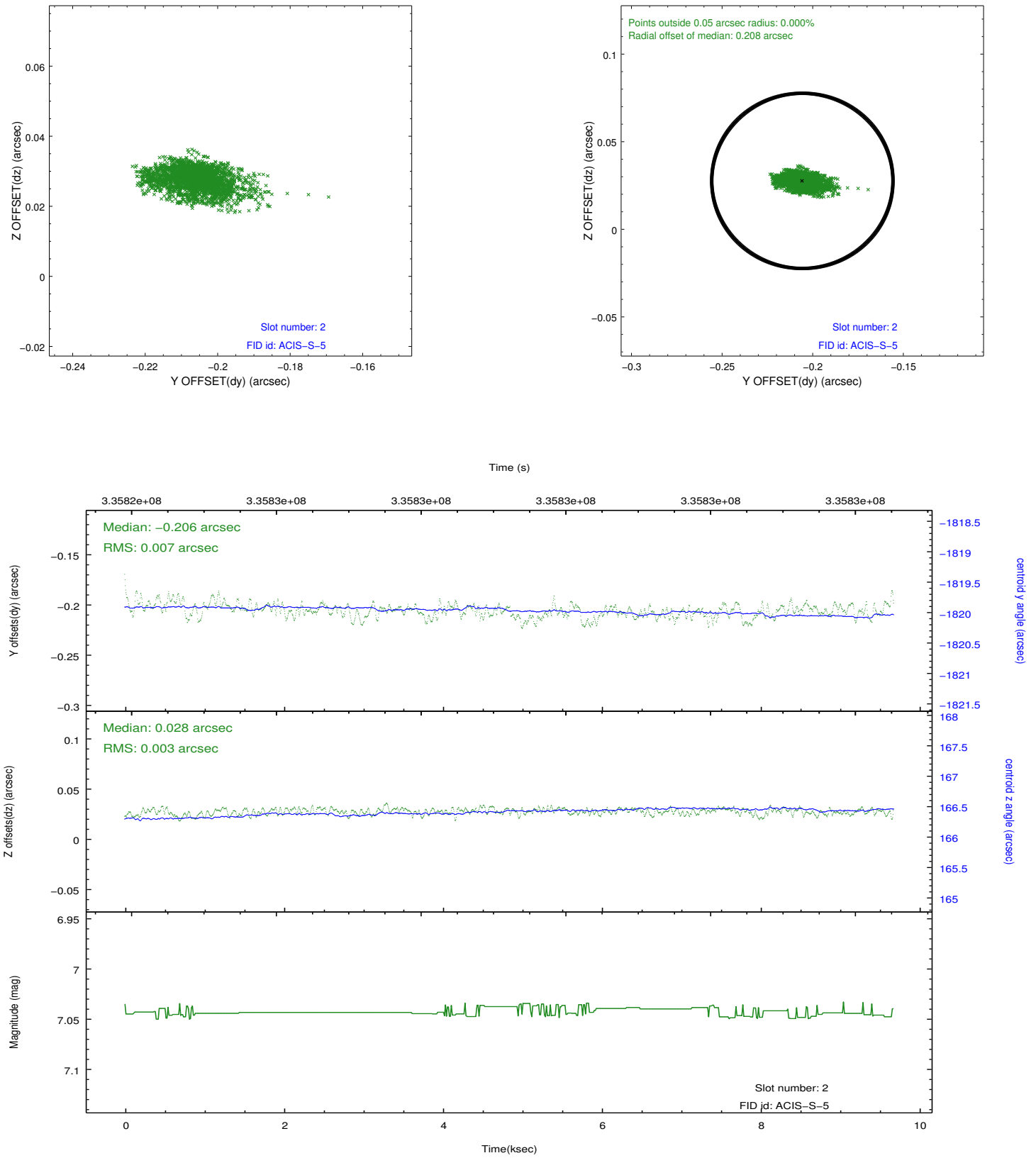
2.5.1 Slot 0



2.5.2 Slot 1



2.5.3 Slot 2



A Summary

A.1 Status

V&V Scientist	Beth Sundheim
V&V Date (YYYY-MM-DD)	2012.05.27
V&V Edition	1
V&V Disposition and Status	OK
V&V Charge Time	9.03999996

A.2 Comments