

V&V Reference Report

L2 ASCDS Version : 8.4.4

Observation 8900 - L2 Version 2
Chandra X-Ray Center

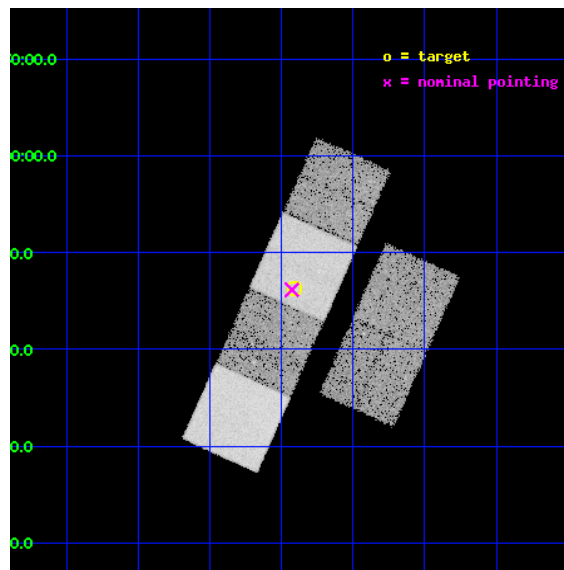
L2 Processing Date : May 28 2012

Contents

1	Front	2
2	OBI	3
2.1	OBI	3
2.1.1	Images	3
2.1.2	Bias	3
2.1.3	Parameters	4
2.1.4	Events	4
2.2	Compared Parameters	5
2.3	Aspect	6
2.4	Star Slots	9
2.4.1	Slot 3	9
2.4.2	Slot 4	10
2.4.3	Slot 5	11
2.4.4	Slot 6	12
2.4.5	Slot 7	13
2.5	FID Slots	14
2.5.1	Slot 0	14
2.5.2	Slot 1	15
2.5.3	Slot 2	16
A	Summary	17
A.1	Status	17
A.2	Comments	17

1 Front

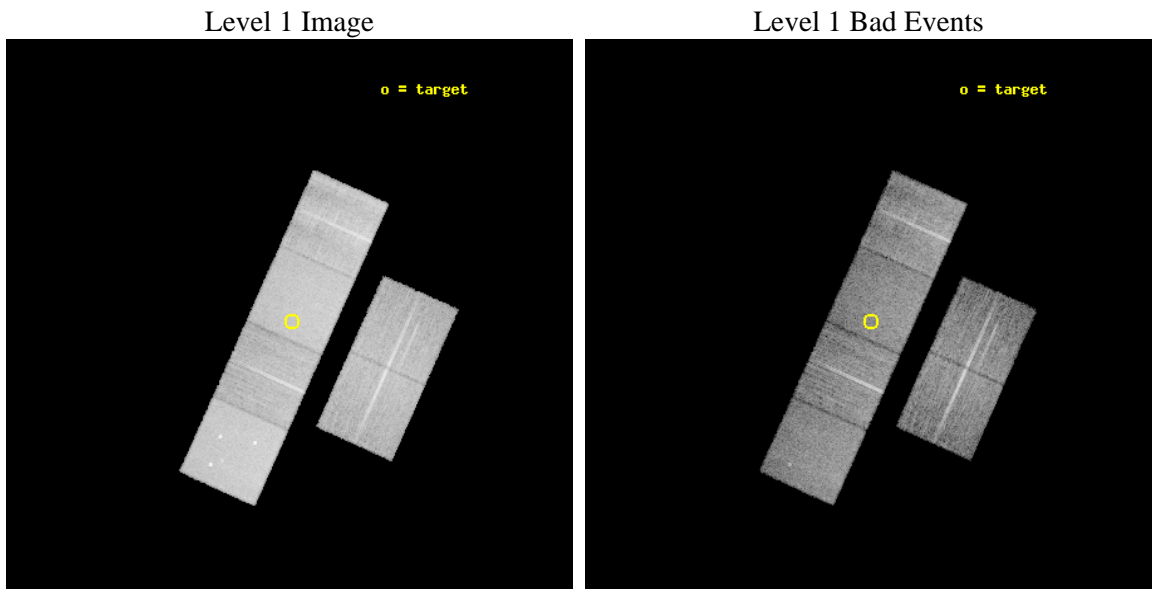
seq_num	200481	Sequence number
obs_id	8900	Observation id
title	BP Psc: Chandra Takes a Close Look at a Pre-Main Sequence Star-Disk-Jet System	Proposal title
observer	Dr. Joel Kastner	Principal investigator
object	BP Psc	Source name
dtcycle	0	
cycle	P	events from which exps? Prim/Second/Both
ra_targ	350.602917	Observer's specified target RA [deg]
dec_targ	-2.228167	Observer's specified target Dec [deg]
ra_nom	350.60695076031	Nominal RA [deg]
dec_nom	-2.230920049139	Nominal Dec [deg]
roll_nom	294.15677471435	Nominal Roll [deg]
revision	2	Processing version of data
ontime	10147.199962258	Sum of GTIs [s]
livetime	10018.710006426	Livetime [s]
ontime2	10147.199962258	Sum of GTIs [s]
ontime3	10147.199962258	Sum of GTIs [s]
ontime5	10147.199962258	Sum of GTIs [s]
ontime6	10143.958991885	Sum of GTIs [s]
ontime7	10147.199962258	Sum of GTIs [s]
ontime8	10147.199962258	Sum of GTIs [s]
l2events	174965	Number of level 2 events



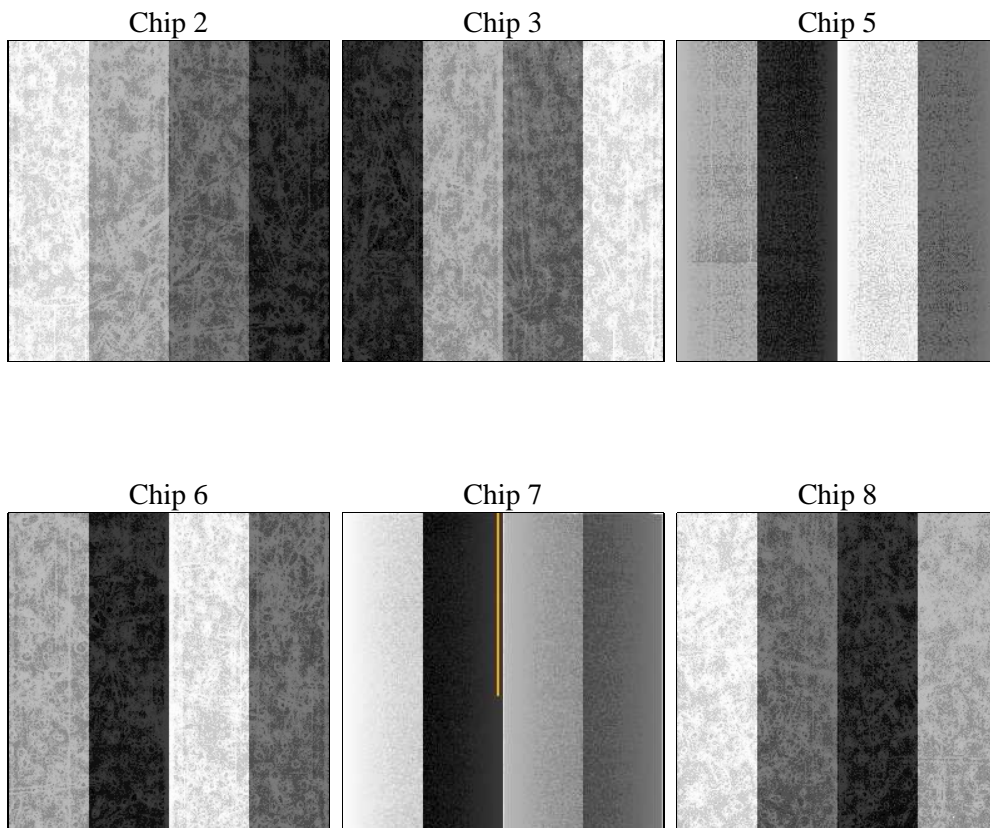
2 OBI

2.1 OBI

2.1.1 Images



2.1.2 Bias



2.1.3 Parameters

obi_num	2	Obi number	sched_exp_time	9998.917000	[s] Scheduled observation exposure time
ascdsver	8.4.4	Processing system revision	ontime	10147.199962258	Sum of GTIs [s]
caldsver	4.4.9	 	ontime2	10147.199962258	Sum of GTIs [s]
date	2012-05-29T01:22:00	Date and time of file creation	ontime3	10147.199962258	Sum of GTIs [s]
revision	2	Processing version of data	ontime5	10147.199962258	Sum of GTIs [s]
			ontime6	10143.958991885	Sum of GTIs [s]
			ontime7	10147.199962258	Sum of GTIs [s]
			ontime8	10147.199962258	Sum of GTIs [s]
			l1events	746216	Number of level 1 events

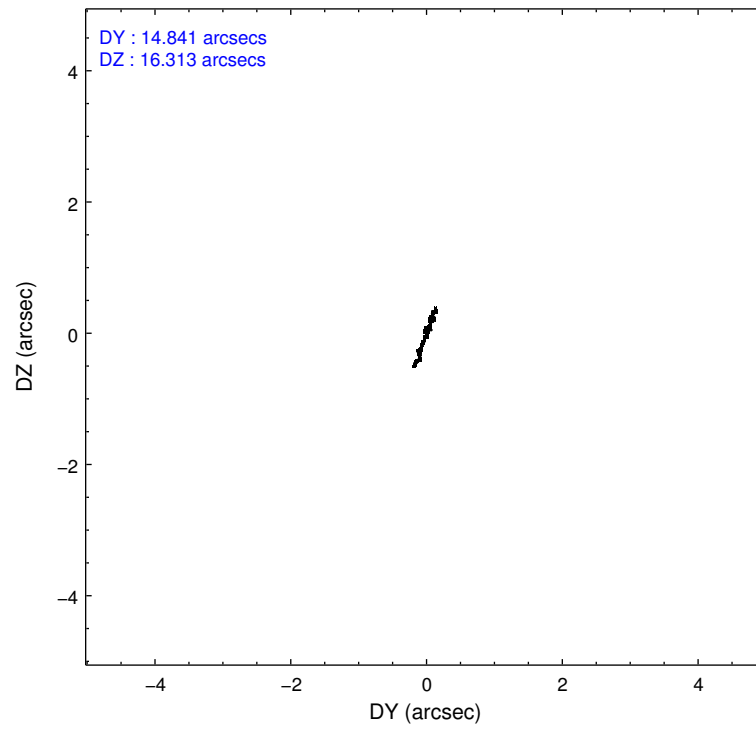
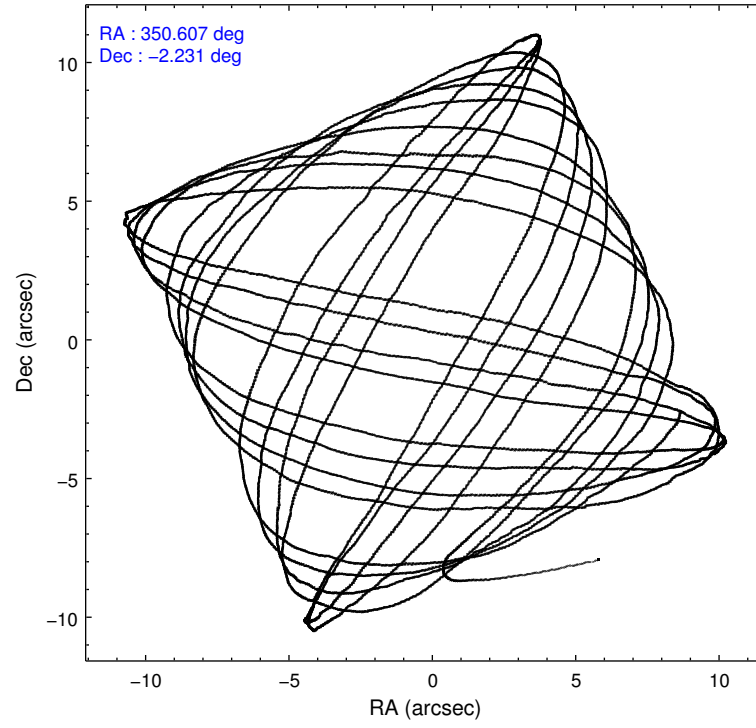
2.1.4 Events

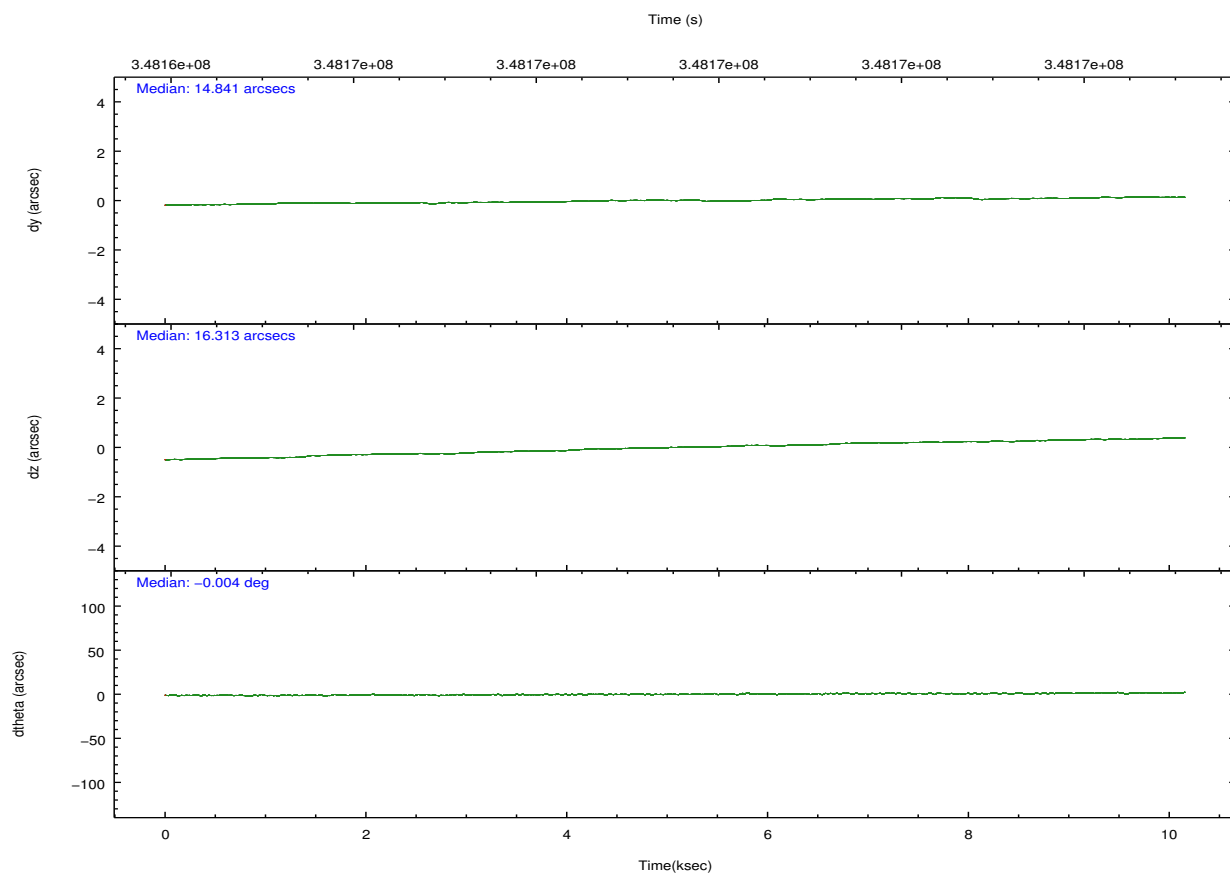
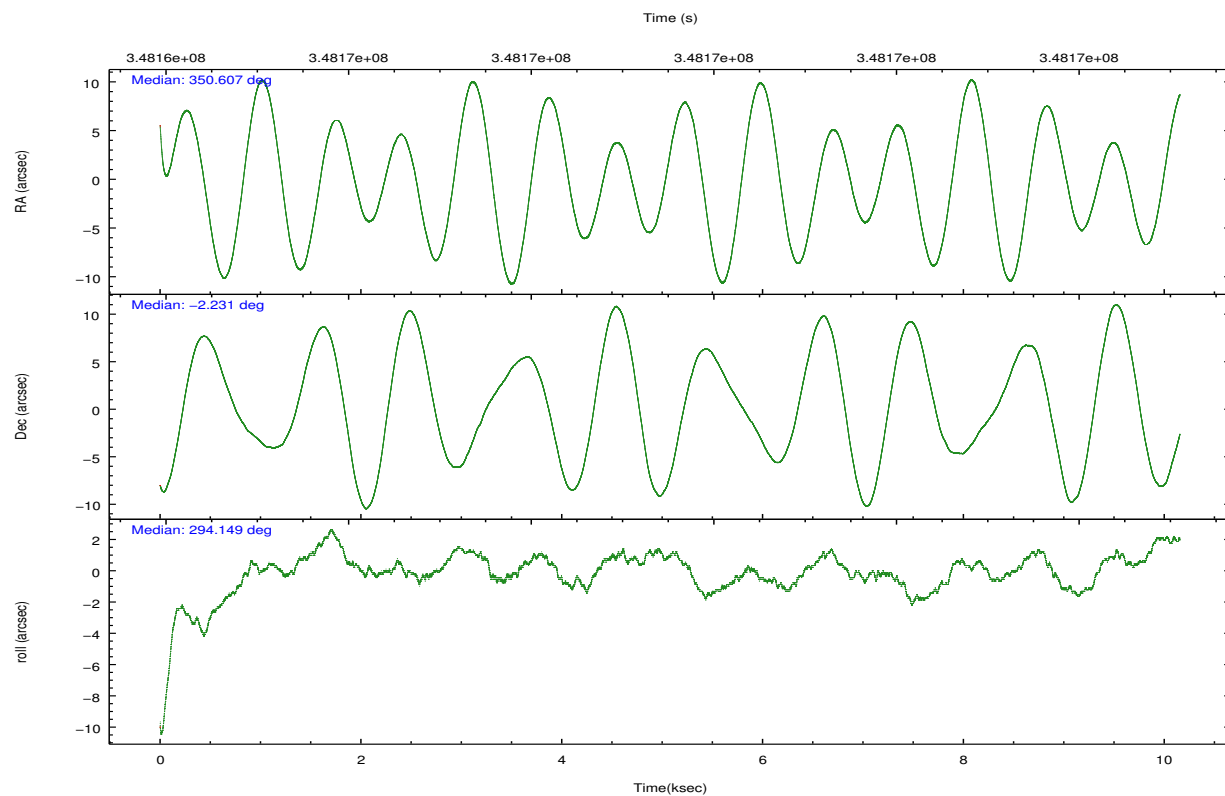
	ccd 2	ccd 3	ccd 5	ccd 6	ccd 7	ccd 8		ccd 2	ccd 3	ccd 5	ccd 6	ccd 7	ccd 8
level 1 events	100975	95026	162921	105928	146002	135364	grade 0 events	5517	5453	6824	5045	5183	9624
rejected events	88426	82618	87883	93179	85692	104269		5%	5%	4%	4%	3%	7%
rejected %	87%	86%	53%	87%	58%	77%	grade 1 events	91	72	429	55	141	100
								0%	0%	0%	0%	0%	0%
							grade 2 events	2705	2461	23091	2812	12561	7162
								2%	2%	14%	2%	8%	5%
							grade 3 events	1152	1192	2761	1221	5051	3117
								1%	1%	1%	1%	3%	2%
							grade 4 events	1110	1207	2655	1171	5044	2877
								1%	1%	1%	1%	3%	2%
							grade 5 events	4368	4733	11588	4922	13539	6831
								4%	4%	7%	4%	9%	5%
							grade 6 events	2108	2150	40040	2554	32681	8408
								2%	2%	24%	2%	22%	6%
							grade 7 events	83924	77758	75533	88148	71802	97245
								83%	81%	46%	83%	49%	71%

2.2 Compared Parameters

Parameter	Planned	Actual	Parameter	Planned	Actual
Instrument	ACIS	ACIS	Obspar format version number	7	7
Detector	ACIS-235678	ACIS-235678	Obspar file type	PREDICTED	ACTUAL
Grating	NONE	NONE	Obspar update status	NONE	UPDATED
Data mode	FAINT	FAINT	CCD I0 on	N	N
Observation mode	POINTING	POINTING	CCD I1 on	N	N
[deg] Pointing RA	350.584533	350.6069507603116	CCD I2 on	O1	Y
[deg] Pointing Dec	-2.215180	-2.230920049139018	CCD I3 on	O2	Y
[deg] Pointing Roll	293.999295	294.1567747143469	CCD S0 on	N	N
[mm] SIM focus pos	-0.684267	-0.6828225247311905	CCD S1 on	O3	Y
[mm] SIM defocus	0	0.001444936568705701	CCD S2 on	Y	Y
[mm] SIM translation stage pos	-190.132523	-190.1425803651734	CCD S3 on	Y	Y
[mm] SIM translation stage offset	0	0.01005778216563158	CCD S4 on	O4	Y
[s] Observation start time (MET)	348164607.184000	348163382.31003	CCD S5 on	N	N
Observation start date	2009-01-12T16:22:21	2009-01-12T16:03:02	Number of optional ACIS chips dropped	0	0
[s] Observation end time (MET)	348174606.184000	348174833.6106	On-chip summing requested	N	N
Observation end date	2009-01-12T19:09:00	2009-01-12T19:13:53	Subarray requested	NONE	NONE
Read mode	TIMED	TIMED	Alternating exposures requested	N	N
			[s] Primary exposure time	0.000000	3.2

2.3 Aspect



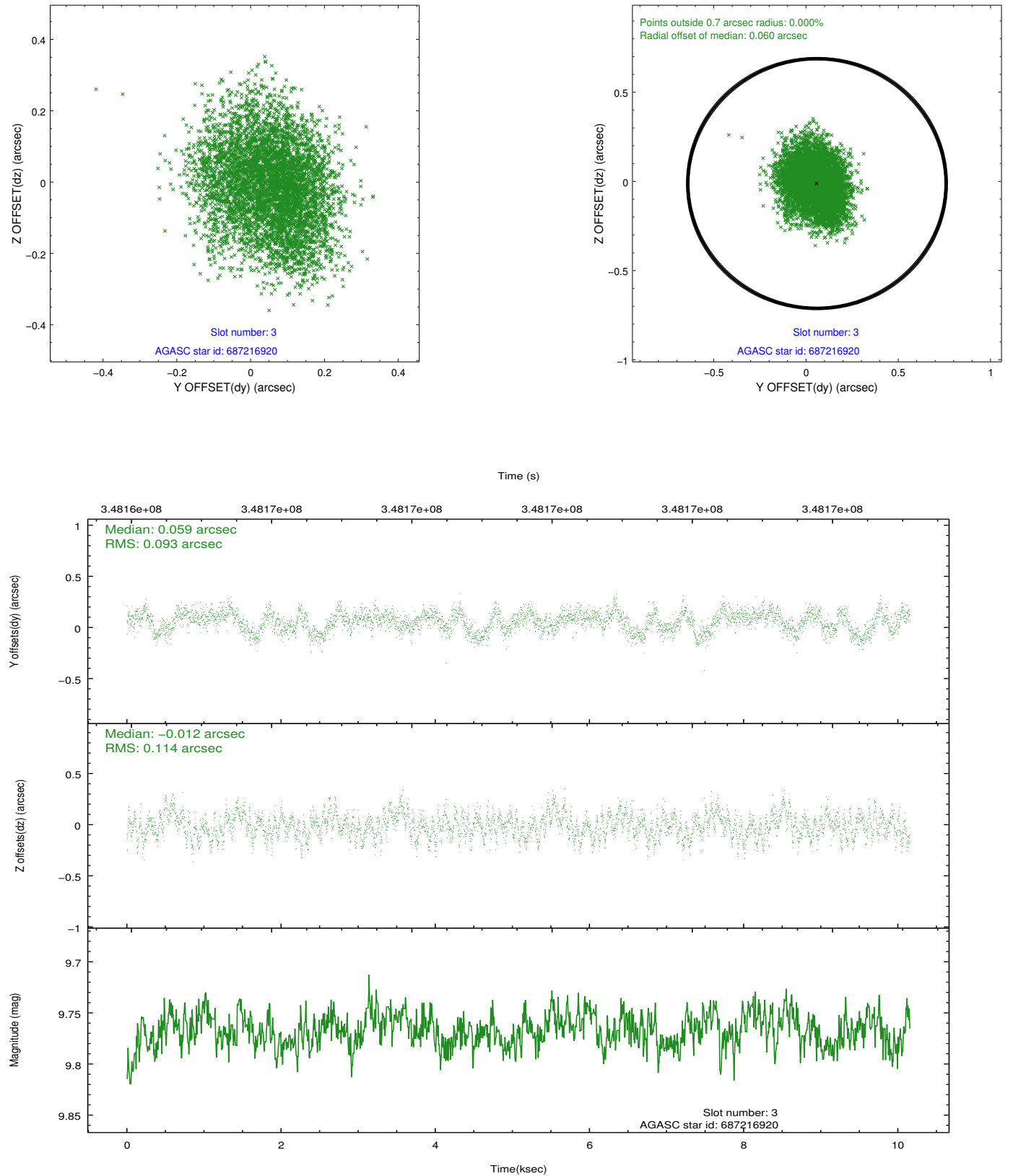


Slot Statistics

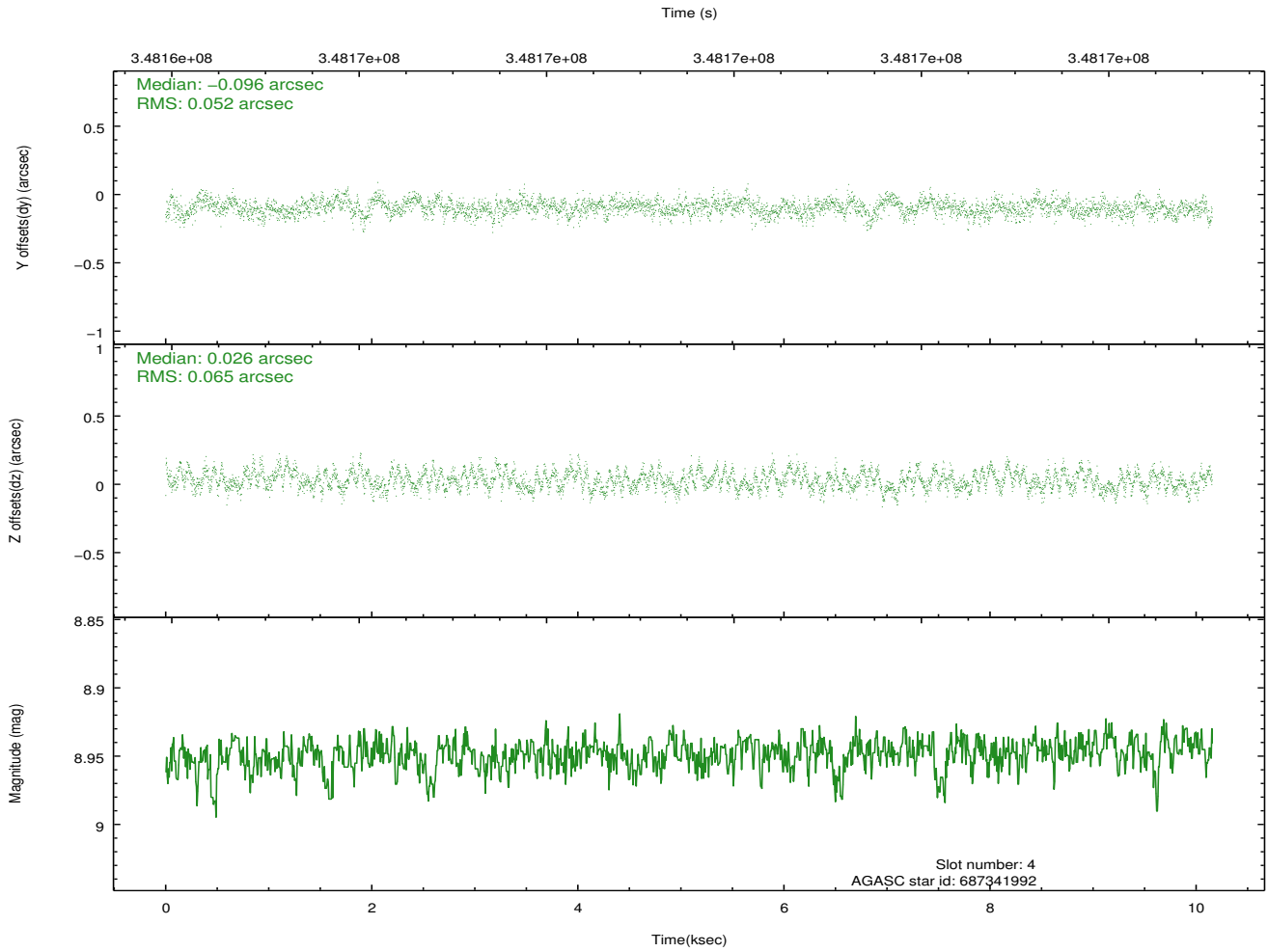
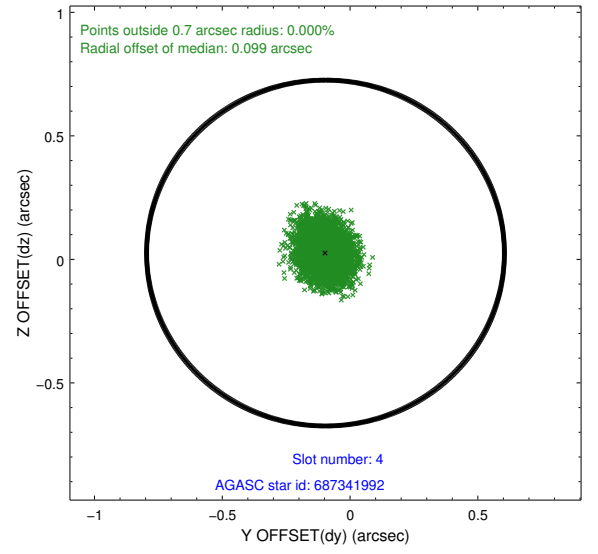
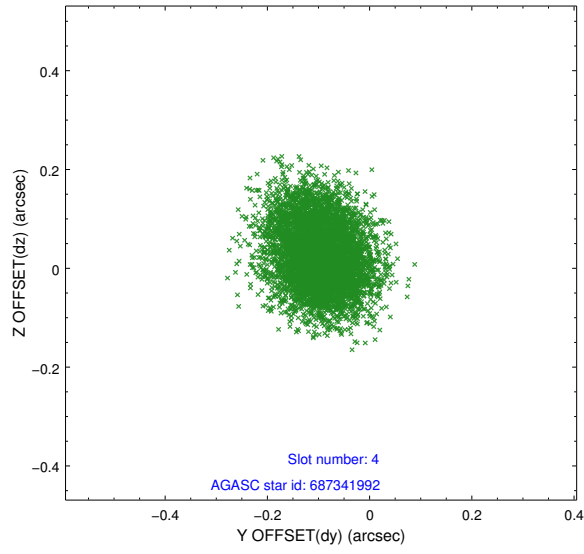
slot	status	id	mag	n_pts	med_dy	med_dz	dr1	dr2	ra	dec	mean_y	mean_z
0	FID	ACIS-S-2	6.92	2478	-0.072	-0.007	0.009	0.014	0.000000	0.000000	-767.88	-1737.65
1	FID	ACIS-S-4	7.01	2478	0.169	0.037	0.007	0.012	0.000000	0.000000	2145.41	170.32
2	FID	ACIS-S-5	7.04	2477	-0.128	-0.021	0.009	0.013	0.000000	0.000000	-1820.10	164.55
3	GUIDE	687216920	9.77	4947	0.059	-0.012	0.159	0.247	349.963646	-2.354283	-449.86	-2243.79
4	GUIDE	687341992	8.95	4951	-0.096	0.026	0.089	0.140	350.517289	-1.825841	-1378.62	348.48
5	GUIDE	687341632	8.65	4950	-0.094	-0.054	0.085	0.137	351.229179	-2.018486	296.36	2406.77
6	GUIDE	687348552	9.48	4942	-0.123	0.250	0.116	0.192	350.683586	-1.472110	-2298.14	1414.57
7	GUIDE	687736536	9.66	4937	0.268	-0.216	0.121	0.207	350.313326	-3.044716	2331.95	-2104.81

2.4 Star Slots

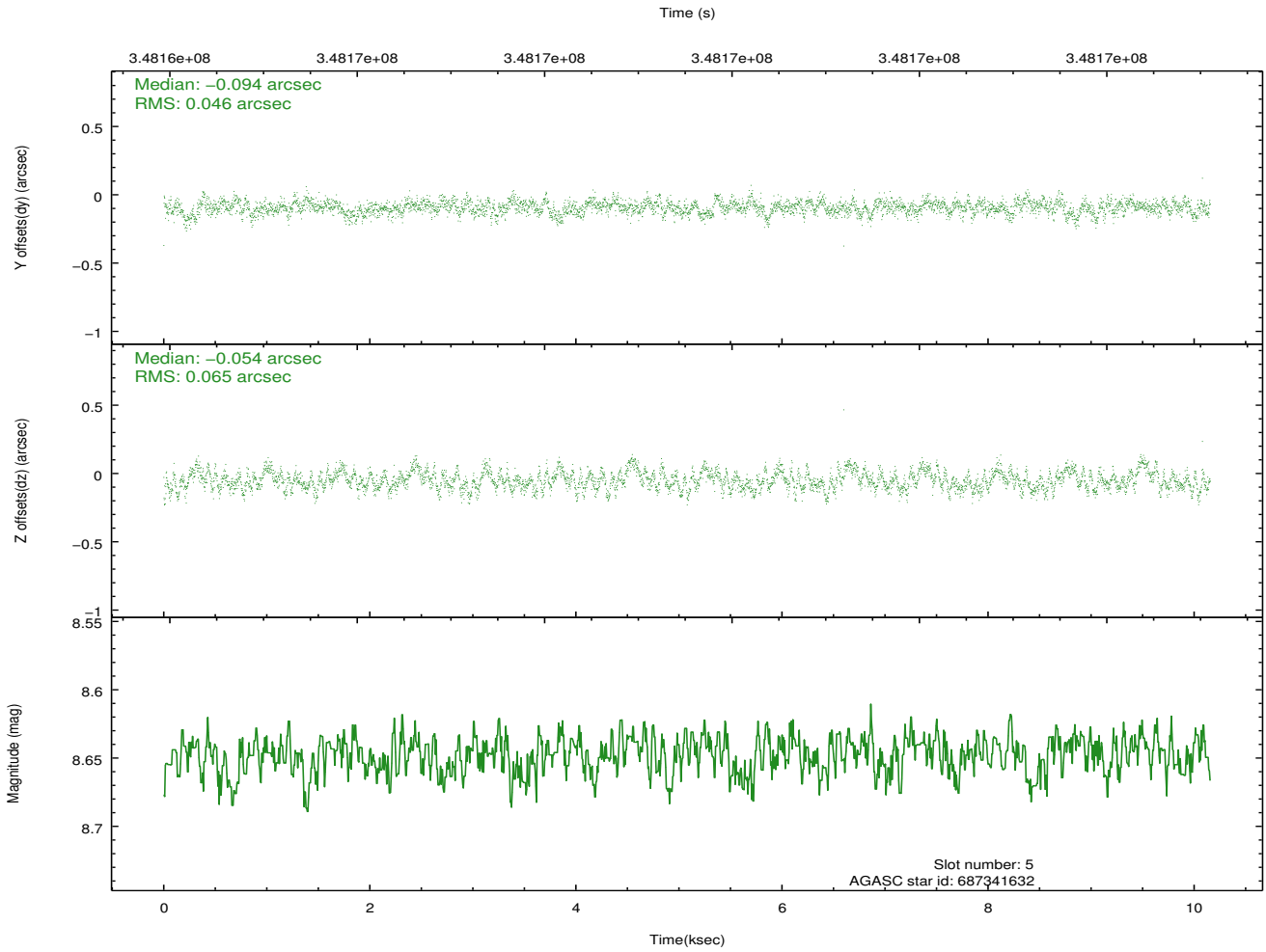
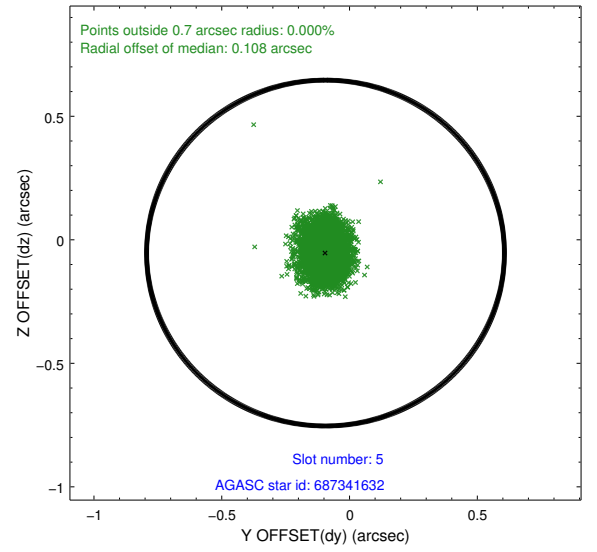
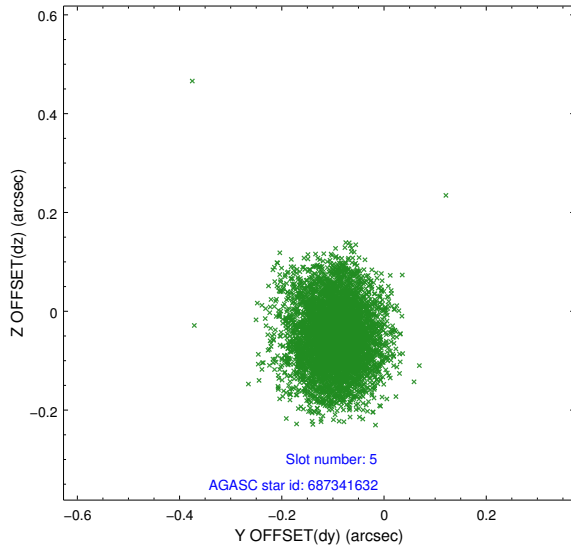
2.4.1 Slot 3



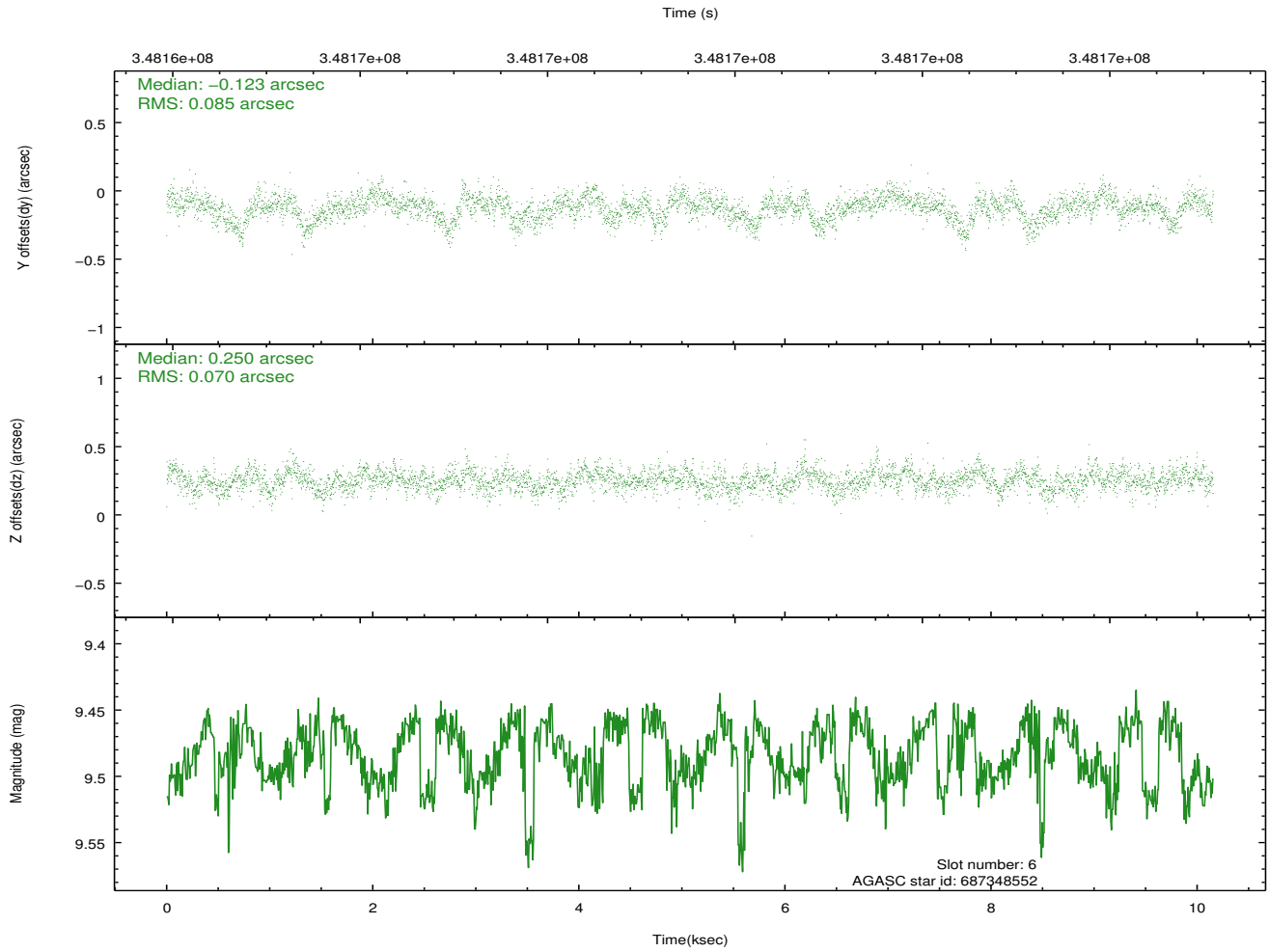
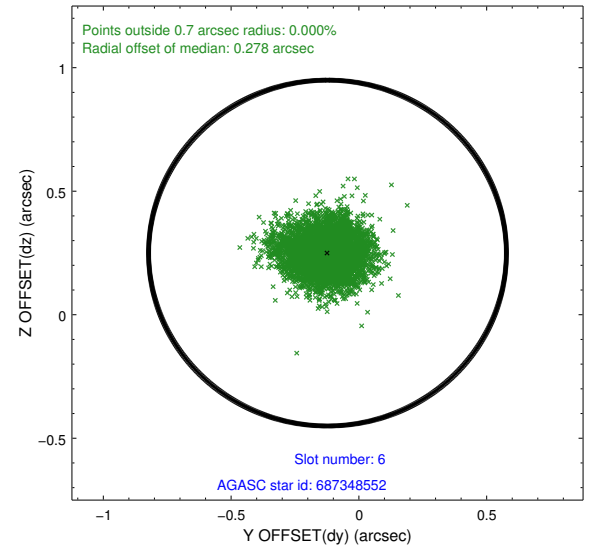
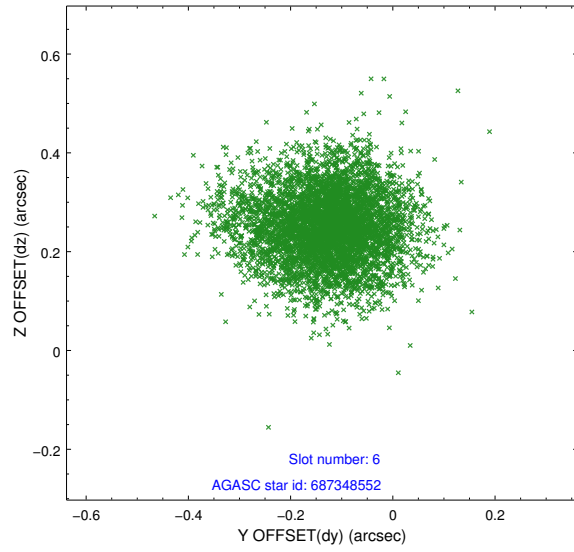
2.4.2 Slot 4



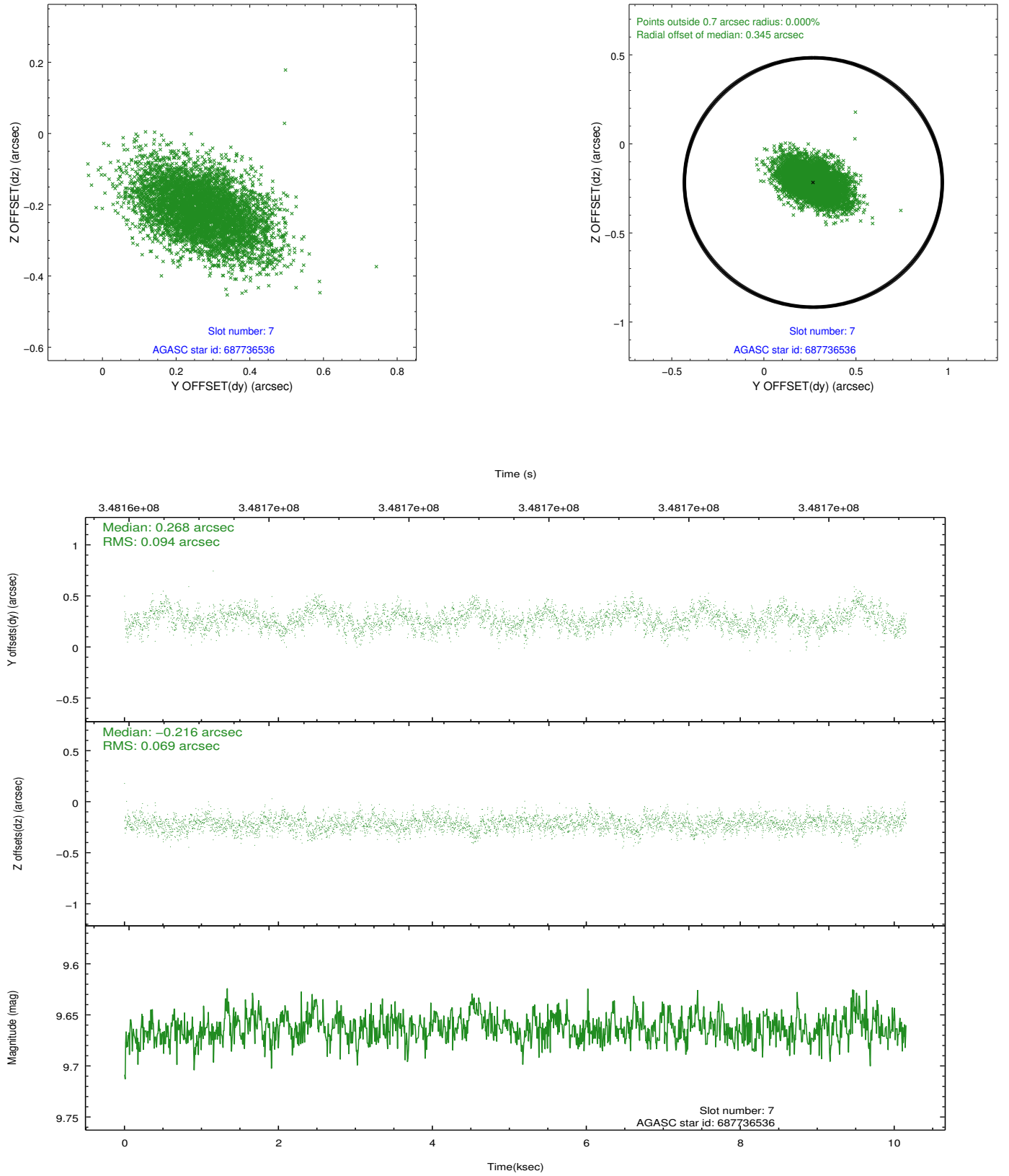
2.4.3 Slot 5



2.4.4 Slot 6

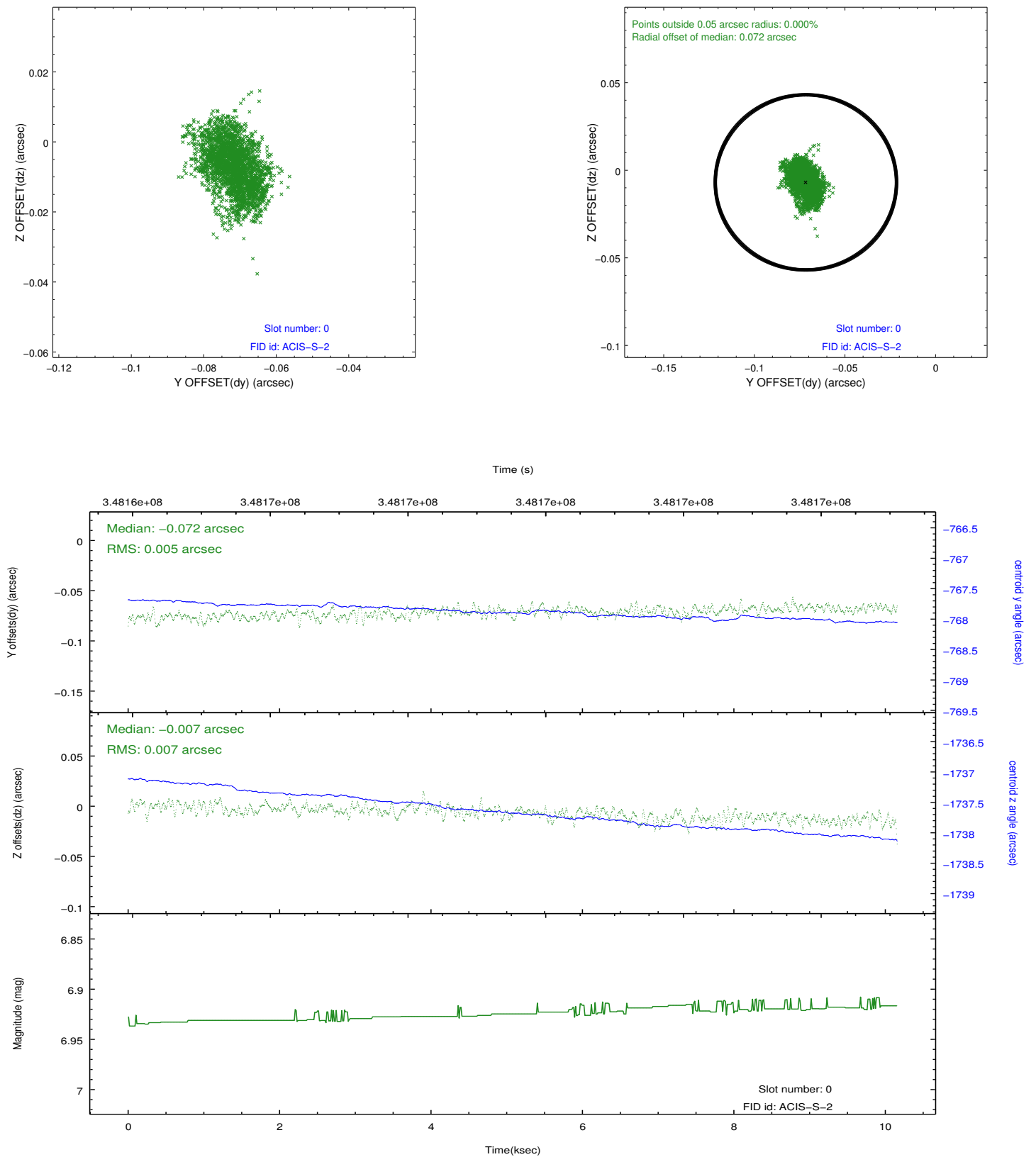


2.4.5 Slot 7

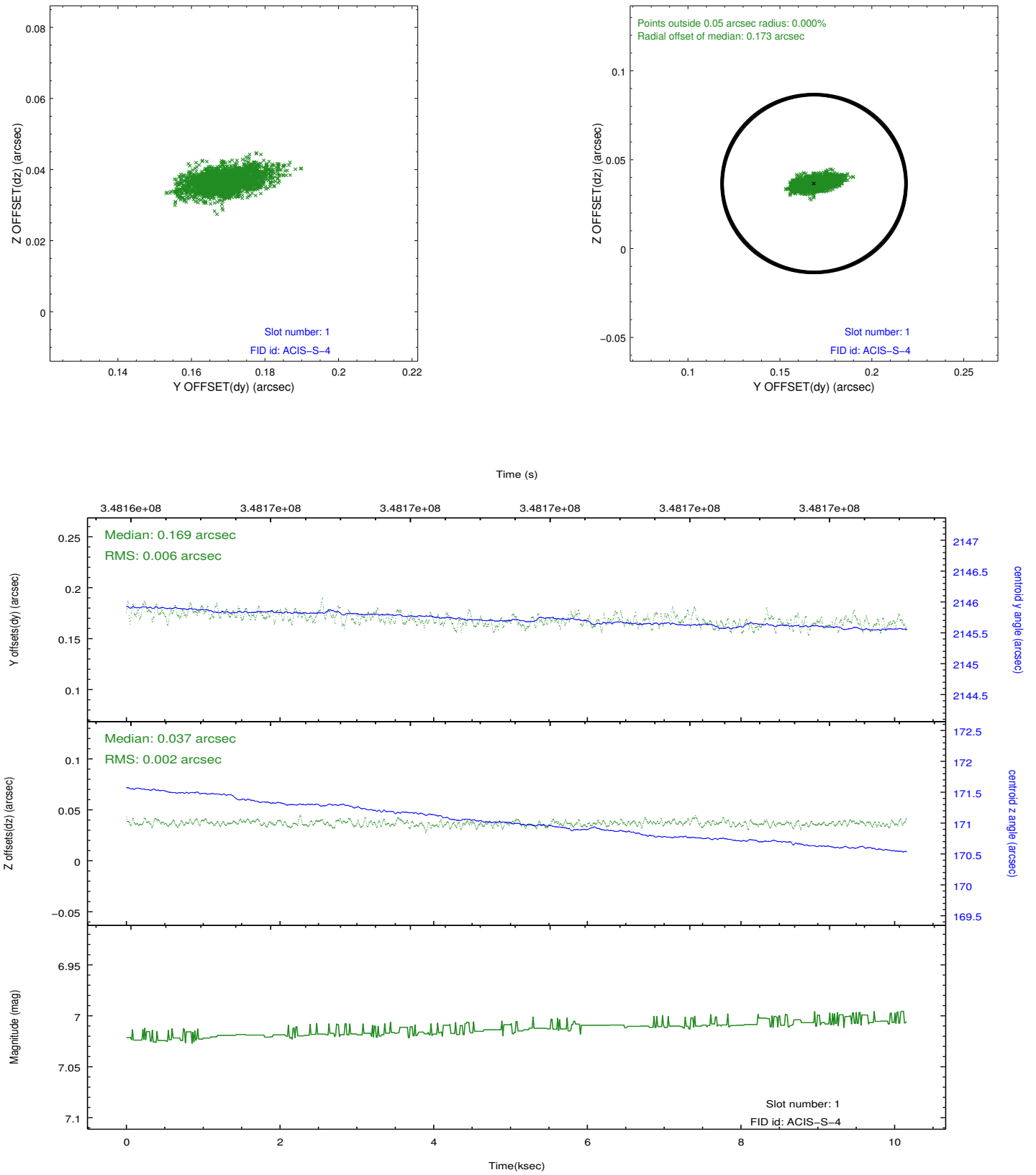


2.5 FID Slots

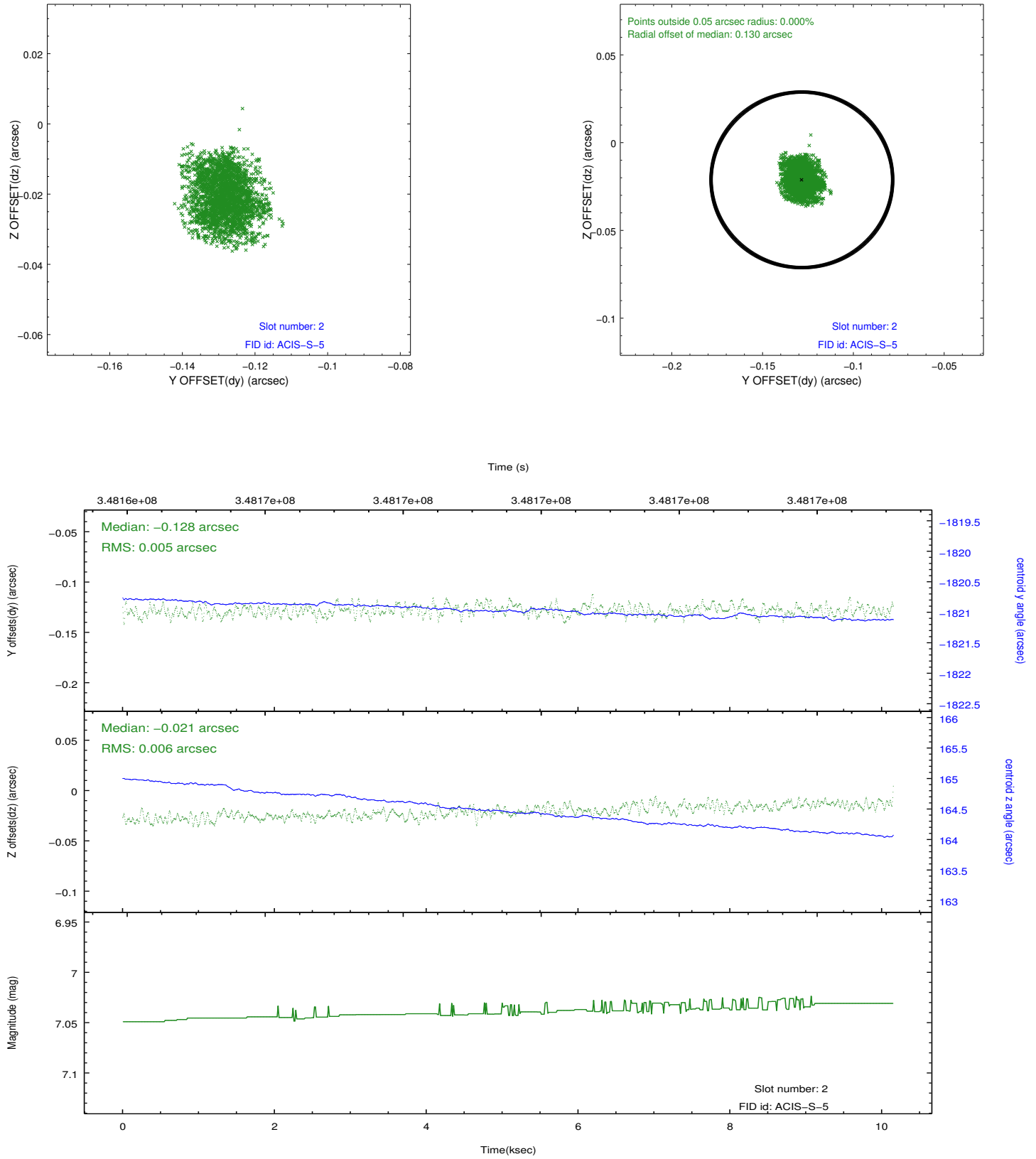
2.5.1 Slot 0



2.5.2 Slot 1



2.5.3 Slot 2



A Summary

A.1 Status

V&V Scientist	Jen Lauer
V&V Date (YYYY-MM-DD)	2012.06.04
V&V Edition	1
V&V Disposition and Status	OK
V&V Charge Time	10.1471999

A.2 Comments