

V&V Reference Report

L2 ASCDS Version : 8.1.1

Observation 870 - L2 Version 4

Chandra X-Ray Center

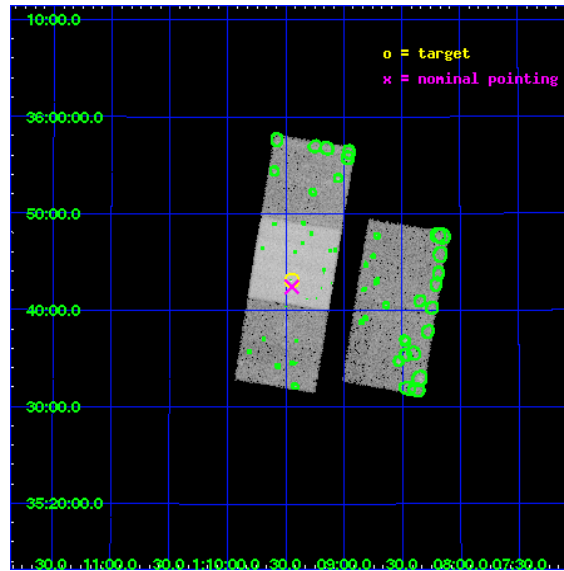
L2 Processing Date : Nov 26 2009

Contents

1	Front	2
2	OBI	3
2.1	OBI	3
2.1.1	Images	3
2.1.2	Bias	3
2.1.3	Parameters	4
2.1.4	Events	4
2.2	Compared Parameters	5
2.3	Aspect	6
2.4	Star Slots	9
2.4.1	Slot 3	9
2.4.2	Slot 4	10
2.4.3	Slot 5	11
2.4.4	Slot 6	12
2.4.5	Slot 7	13
2.5	FID Slots	14
2.5.1	Slot 0	14
2.5.2	Slot 1	15
2.5.3	Slot 2	16
3	Point Sources	17
A	Summary	18
A.1	Status	18
A.2	Comments	18

1 Front

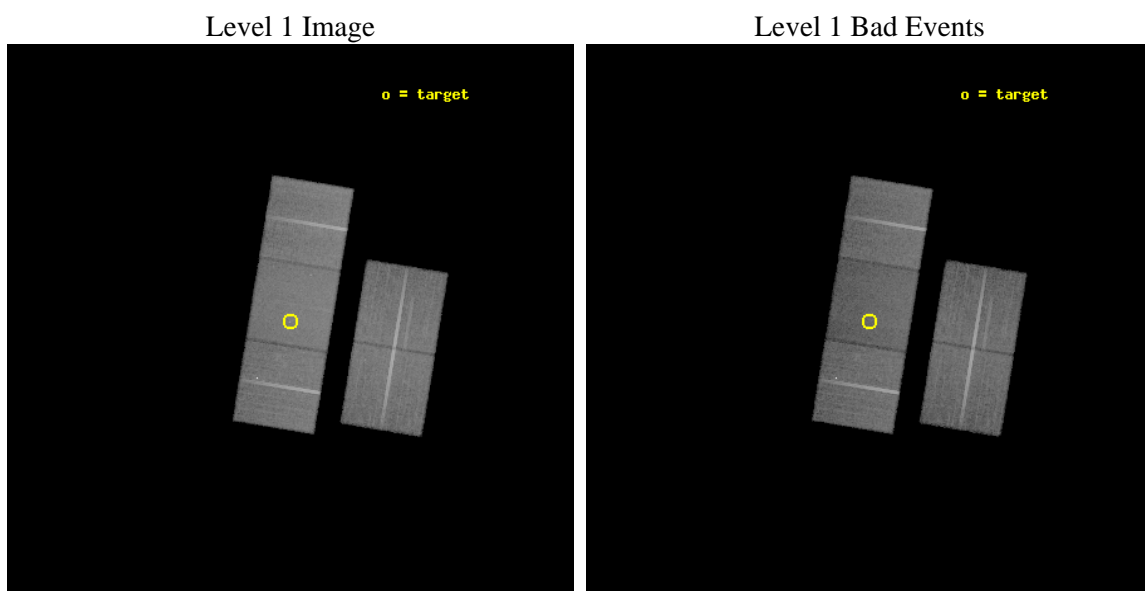
seq_num	700175	Sequence number
obs_id	870	Observation id
title	X-RAY OBSERVATION OF THE NEAREST LINERS AND SEYFERT GALAXIES	Propo
observer	DR PAULINA LIRA	Principal investigator
object	NGC 404	Source name
dtcycle	0	
cycle	P	events from which exps? Prim/Second/Both
ra_targ	17.362083	Observer's specified target RA
dec_targ	35.717611	Observer's specified target Dec
ra_nom	17.361763175343	Nominal RA
dec_nom	35.707395110534	Nominal Dec
roll_nom	279.33939900385	Nominal Roll
revision	4	Processing version of data
ontime	24169.017139979	Sum of GTIs [s]
livetime	23862.974492117	Livetime [s]
ontime2	24168.976099975	Sum of GTIs [s]
ontime3	24168.894019976	Sum of GTIs [s]
ontime6	24168.93505998	Sum of GTIs [s]
ontime7	24169.017139979	Sum of GTIs [s]
ontime8	24168.85297998	Sum of GTIs [s]
l2events	156984	Number of level 2 events



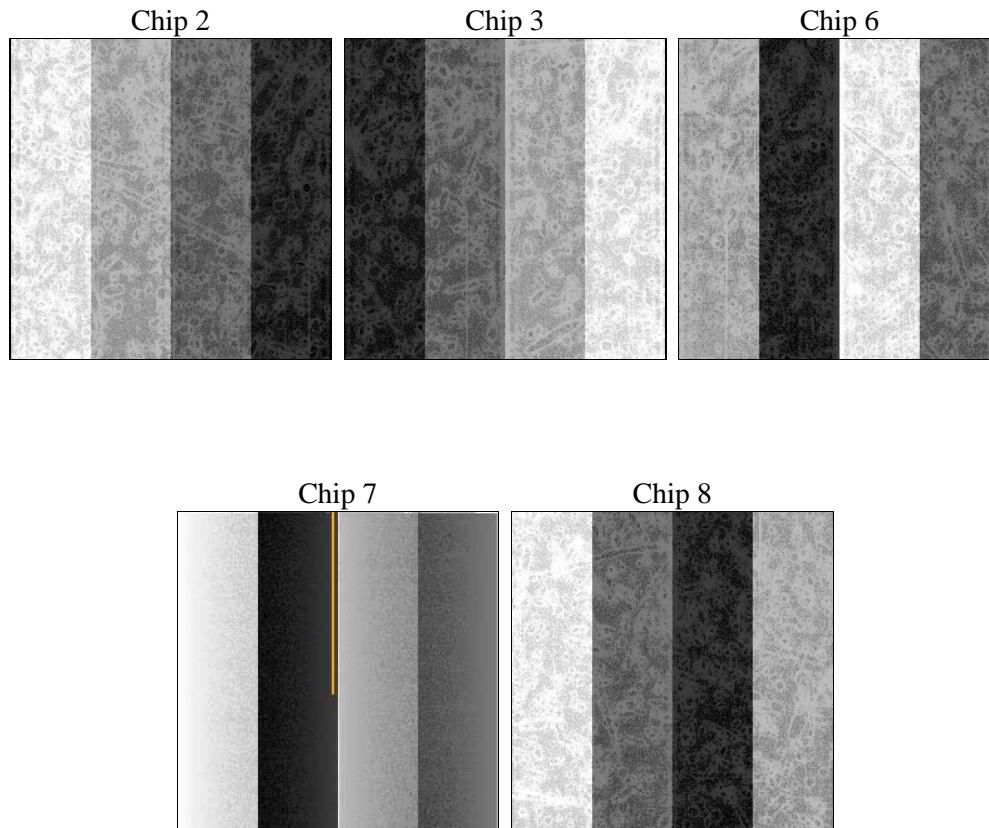
2 OBI

2.1 OBI

2.1.1 Images



2.1.2 Bias



2.1.3 Parameters

obi_num	0	Obi number	sched_exp_time	25000.000000	Scheduled observation exposure time
ascdsver	8.1.1	ASCDS version number	ontime	24169.017139979	Sum of GTIs [s]
caldsver	4.1.4	 	ontime2	24168.976099975	Sum of GTIs [s]
date	2009-11-26T08:06:57	Date and time of file creation	ontime3	24168.894019976	Sum of GTIs [s]
revision	3	Processing version of data	ontime6	24168.93505998	Sum of GTIs [s]
			ontime7	24169.017139979	Sum of GTIs [s]
			ontime8	24168.85297998	Sum of GTIs [s]
			l1events	1085026	Number of level 1 events

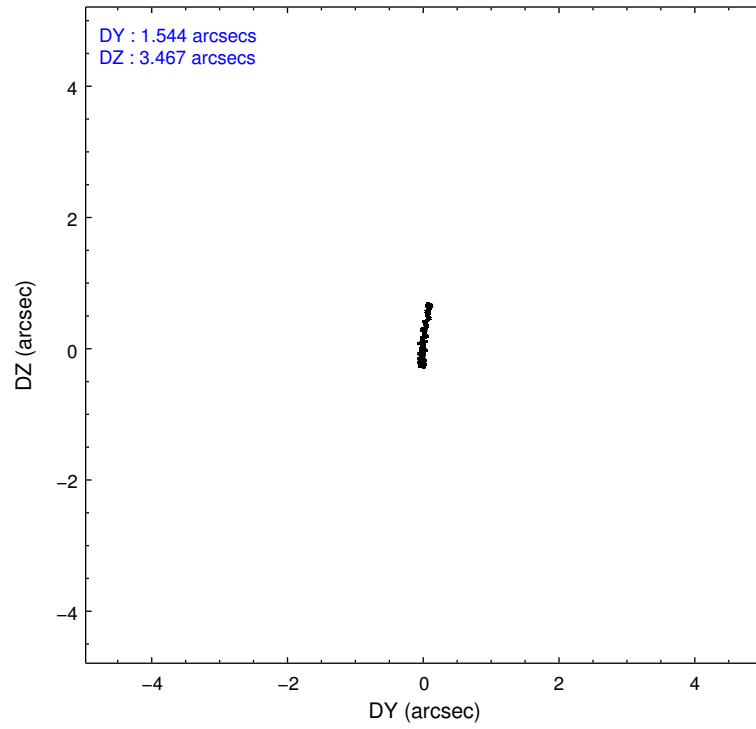
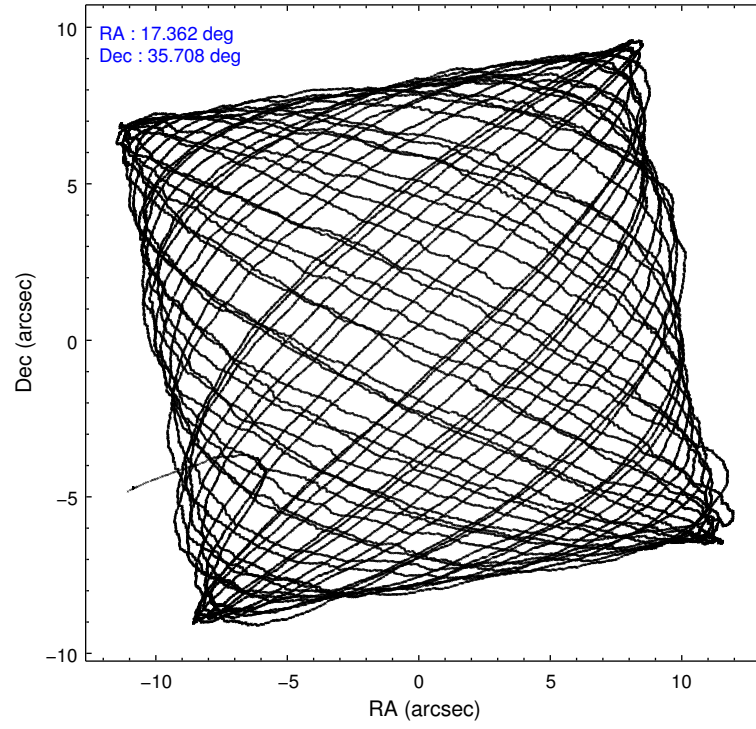
2.1.4 Events

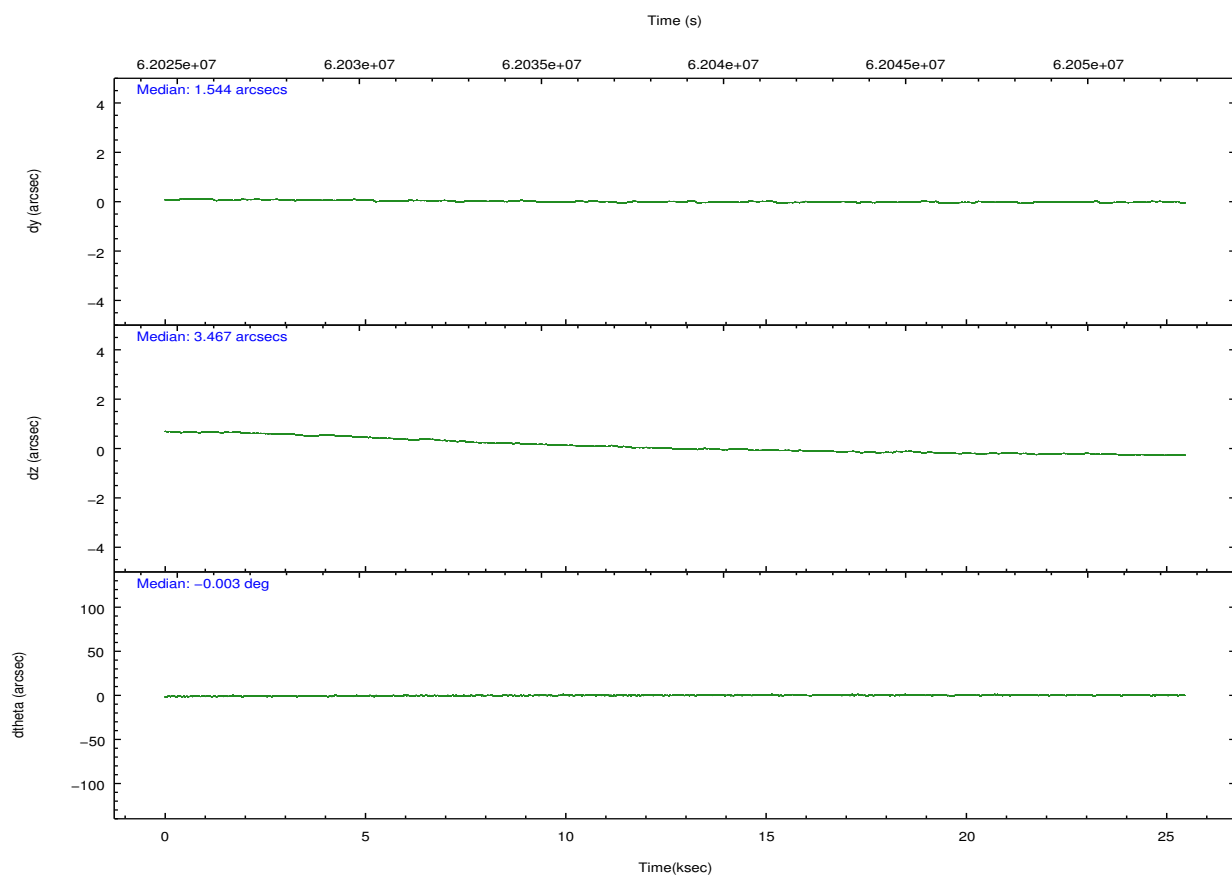
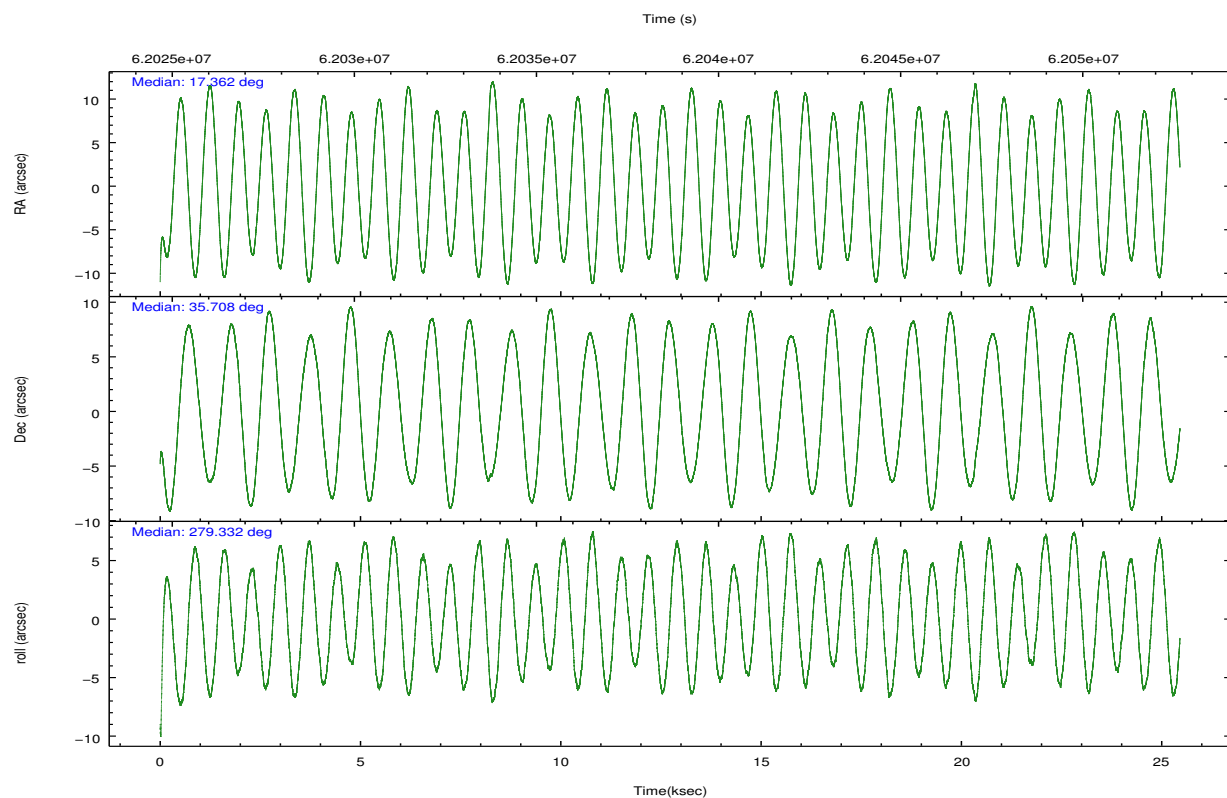
	ccd 2	ccd 3	ccd 6	ccd 7	ccd 8		ccd 2	ccd 3	ccd 6	ccd 7	ccd 8
level 1 events	203488	201793	217586	220749	241410	grade 0 events	4126	3953	4371	5321	9230
rejected events	184725	182672	197208	136551	201297		2%	1%	2%	2%	3%
rejected %	90%	90%	90%	61%	83%	grade 1 events	41	34	33	110	79
							0%	0%	0%	0%	0%
						grade 2 events	7535	7833	7865	17856	12866
							3%	3%	3%	8%	5%
						grade 3 events	1254	1254	1253	5097	3252
							0%	0%	0%	2%	1%
						grade 4 events	1244	1193	1296	4558	3136
							0%	0%	0%	2%	1%
						grade 5 events	3480	3870	4449	13261	5897
							1%	1%	2%	6%	2%
						grade 6 events	4607	4892	5597	51394	11632
							2%	2%	2%	23%	4%
						grade 7 events	181201	178764	192722	123152	195318
							89%	88%	88%	55%	80%

2.2 Compared Parameters

Parameter	Planned	Actual	Parameter	Planned	Actual
Instrument	ACIS	ACIS	Obspar format version number	6	6
Detector	ACIS-23678	ACIS-23678	Obspar file type	PREDICTED	ACTUAL
Grating	NONE	NONE	Obspar update status	NONE	UPDATED
Data mode	FAINT	FAINT	Number of optional ACIS chips dropped	0	0
Observation mode	POINTING	POINTING	On-chip summing requested	N	N
Pointing RA	17.340311	17.3617631753433	Subarray requested	NONE	NONE
Pointing Dec	35.728767	35.70739511053448	Alternating exposures requested	N	N
Pointing Roll	279.195298	279.3393990038459	Primary exposure time	0.000000	3.2
SIM focus pos (mm)	-0.684267	-0.6828225247311905			
SIM defocus (mm)	0	0.001444936568705701			
SIM translation stage pos (mm)	-190.132523	-190.1400660498719			
SIM translation stage offset (mm)	0	0.00754346686406393			
Observation start time	62026394.184000	62025163.322458			
Observation start date	1999-12-19T21:32:10	1999-12-19T21:12:43			
Observation end time	62051394.184000	62053257.548475			
Observation end date	1999-12-20T04:28:50	1999-12-20T05:00:57			
Read mode	TIMED	TIMED			

2.3 Aspect



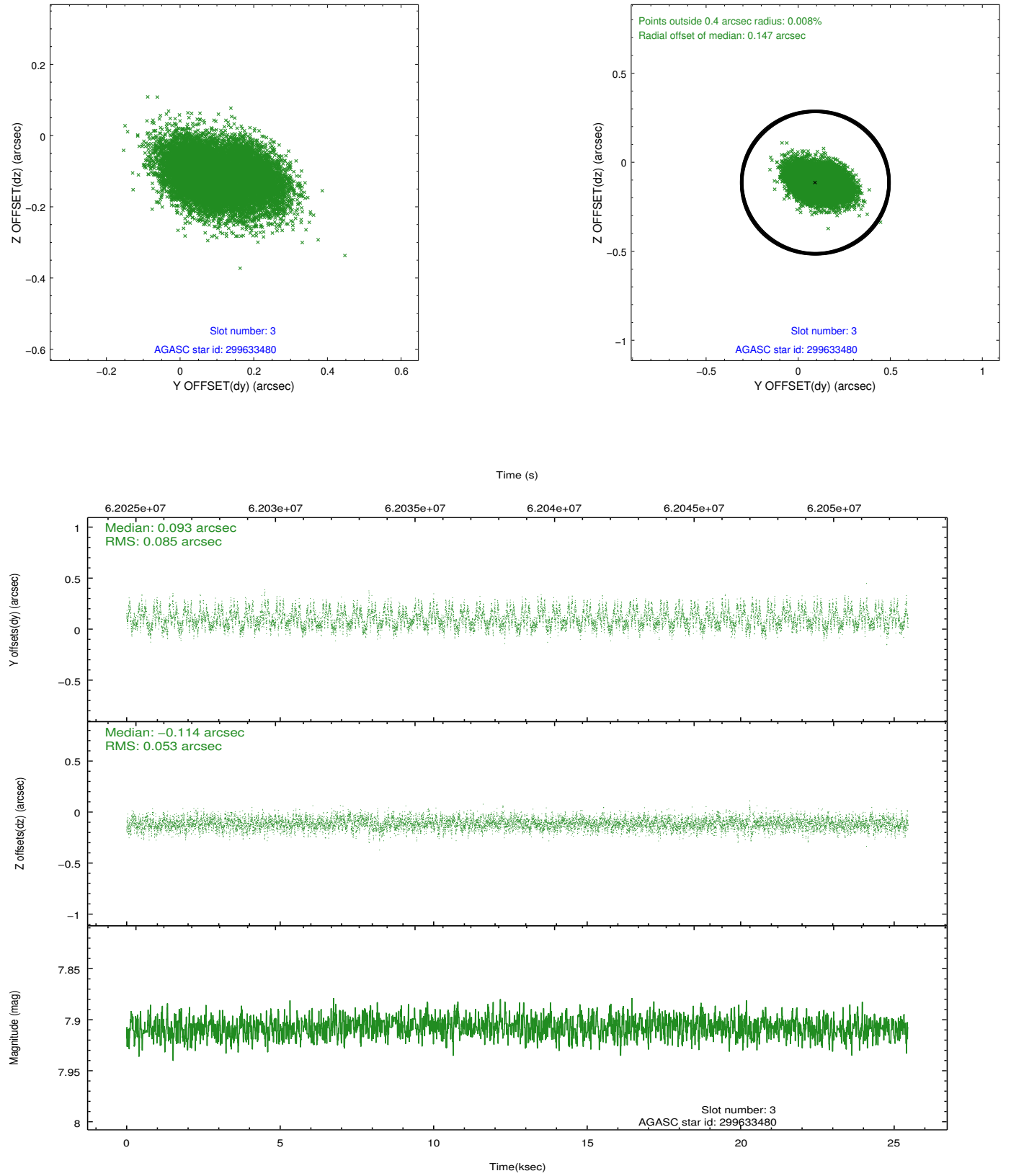


Slot Statistics

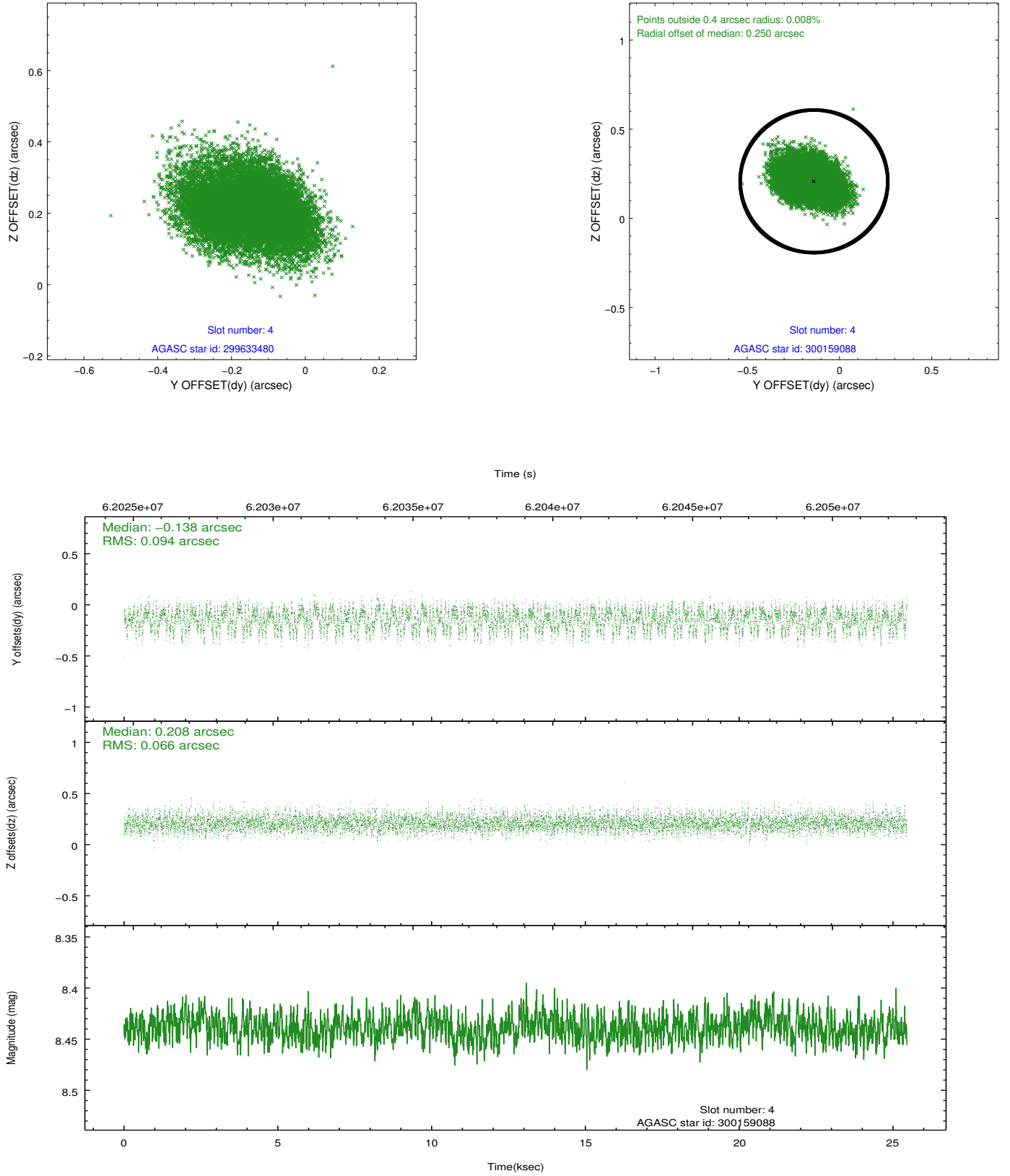
slot	status	id	mag	n_pts	med_dy	med_dz	dr1	dr2	ra	dec	mean_y	mean_z
0	FID	ACIS-S-2	7.13	12418	-0.004	-0.063	0.006	0.009	0.000000	0.000000	-754.20	-1724.69
1	FID	ACIS-S-4	7.23	12418	0.011	0.019	0.004	0.008	0.000000	0.000000	2159.14	183.83
2	FID	ACIS-S-5	7.26	12418	-0.039	0.053	0.006	0.010	0.000000	0.000000	-1807.06	177.61
3	GUIDE	299633480	7.91	12415	0.093	-0.114	0.107	0.174	16.698517	35.145641	1765.21	-2199.41
4	GUIDE	300159088	8.44	12417	-0.138	0.208	0.123	0.196	17.935197	36.409190	-2147.72	2093.51
5	GUIDE	299631696	9.38	12409	0.233	-0.200	0.157	0.266	16.772216	34.984308	2373.95	-2081.42
6	GUIDE	301867736	9.46	12404	-0.144	-0.066	0.145	0.233	18.118417	35.982007	-546.47	2384.38
7	GUIDE	300163232	9.39	12411	-0.053	0.167	0.124	0.201	17.124673	36.110910	-1458.54	-399.01

2.4 Star Slots

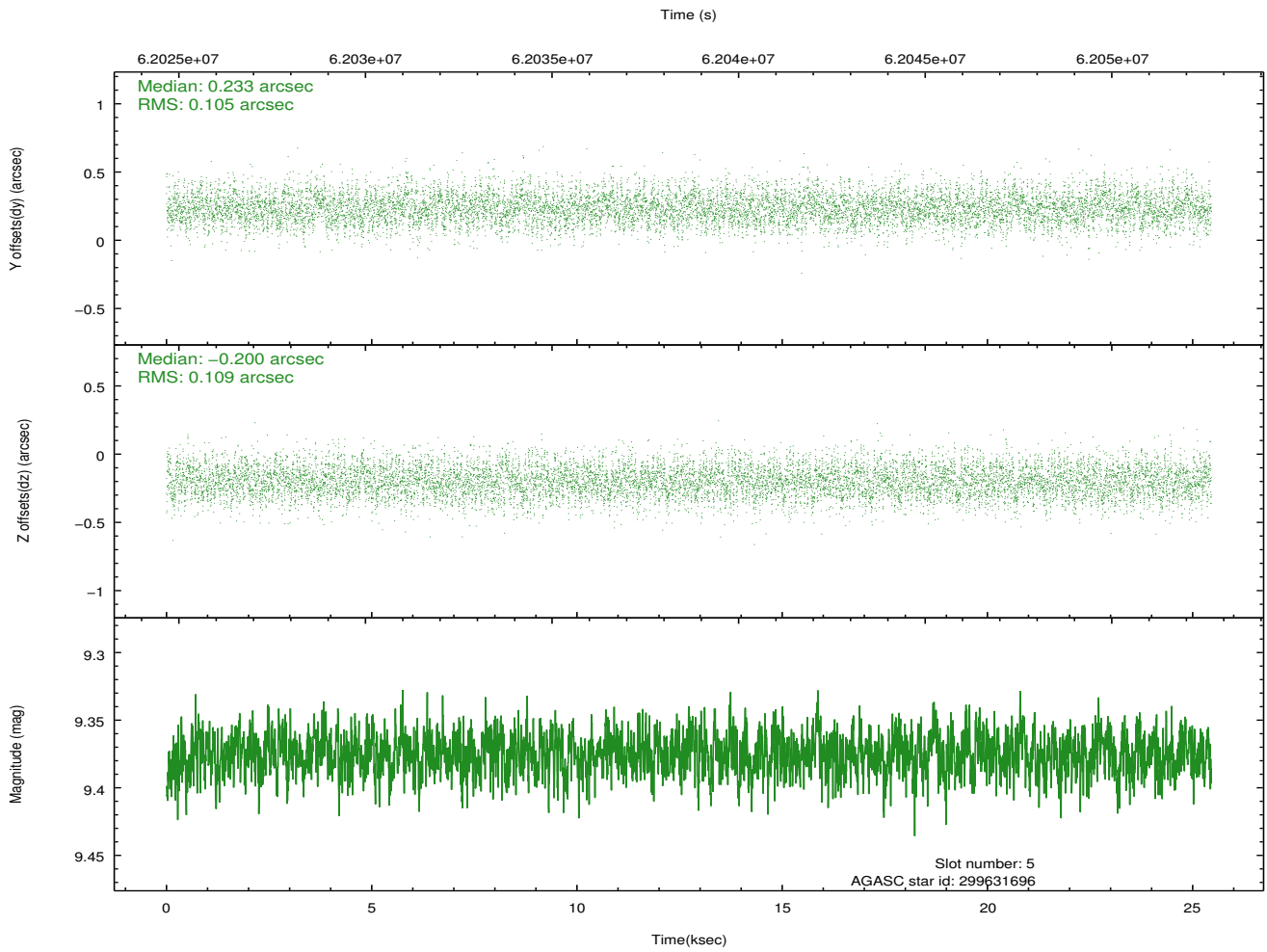
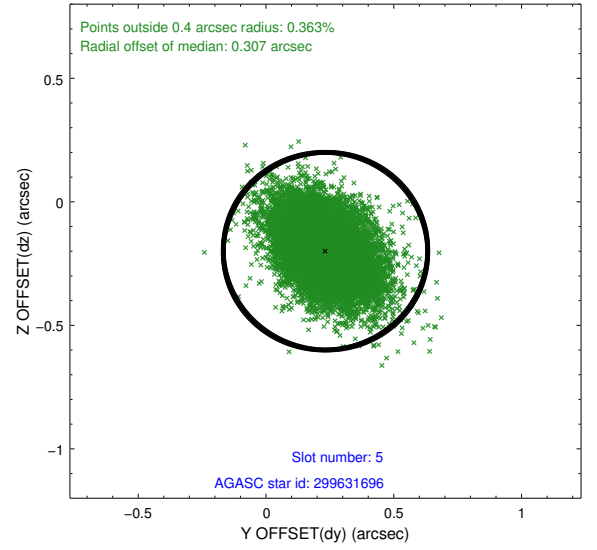
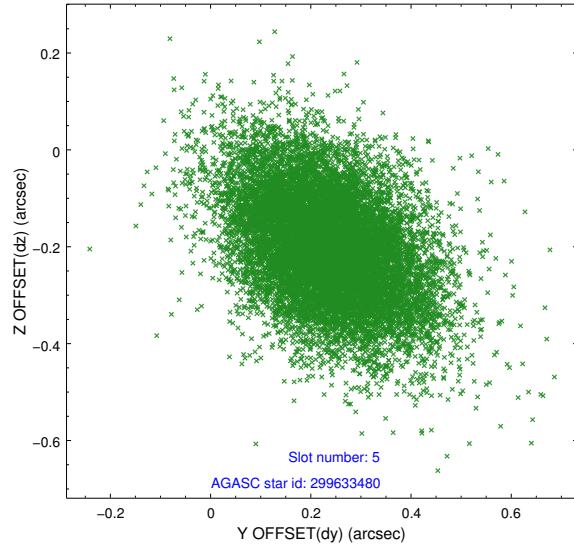
2.4.1 Slot 3



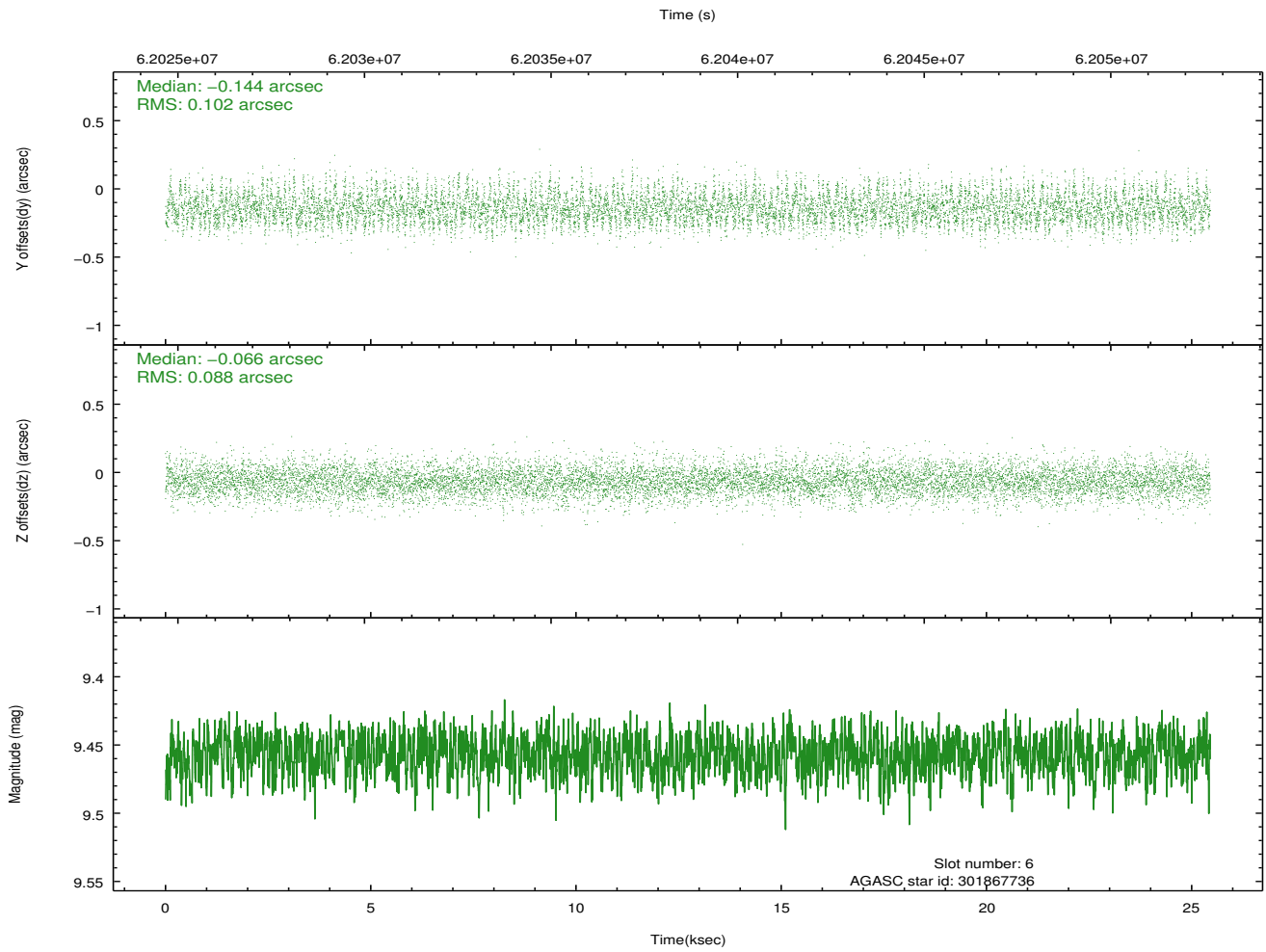
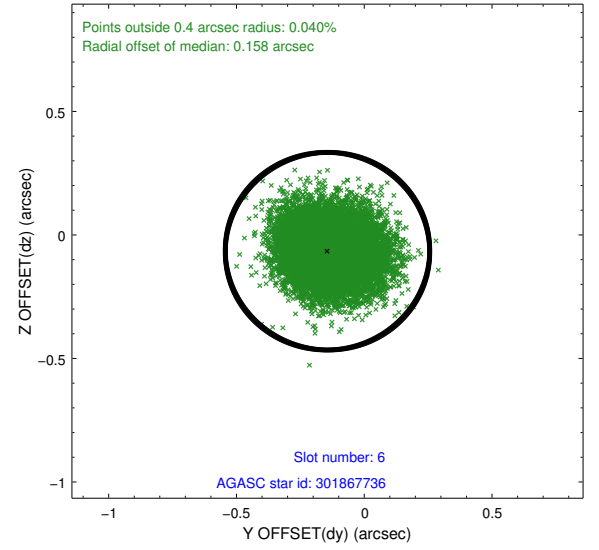
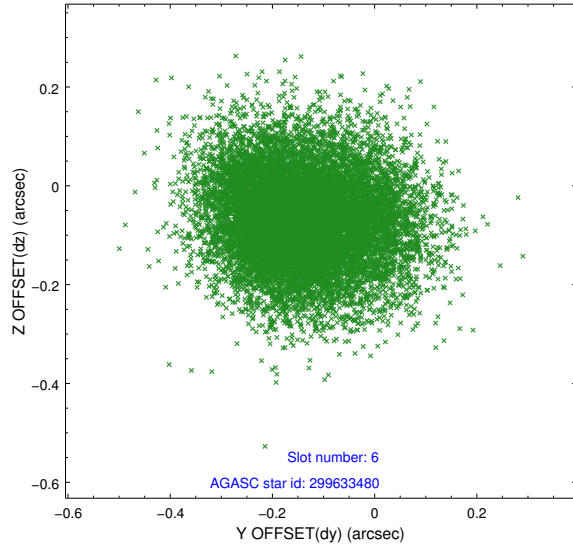
2.4.2 Slot 4



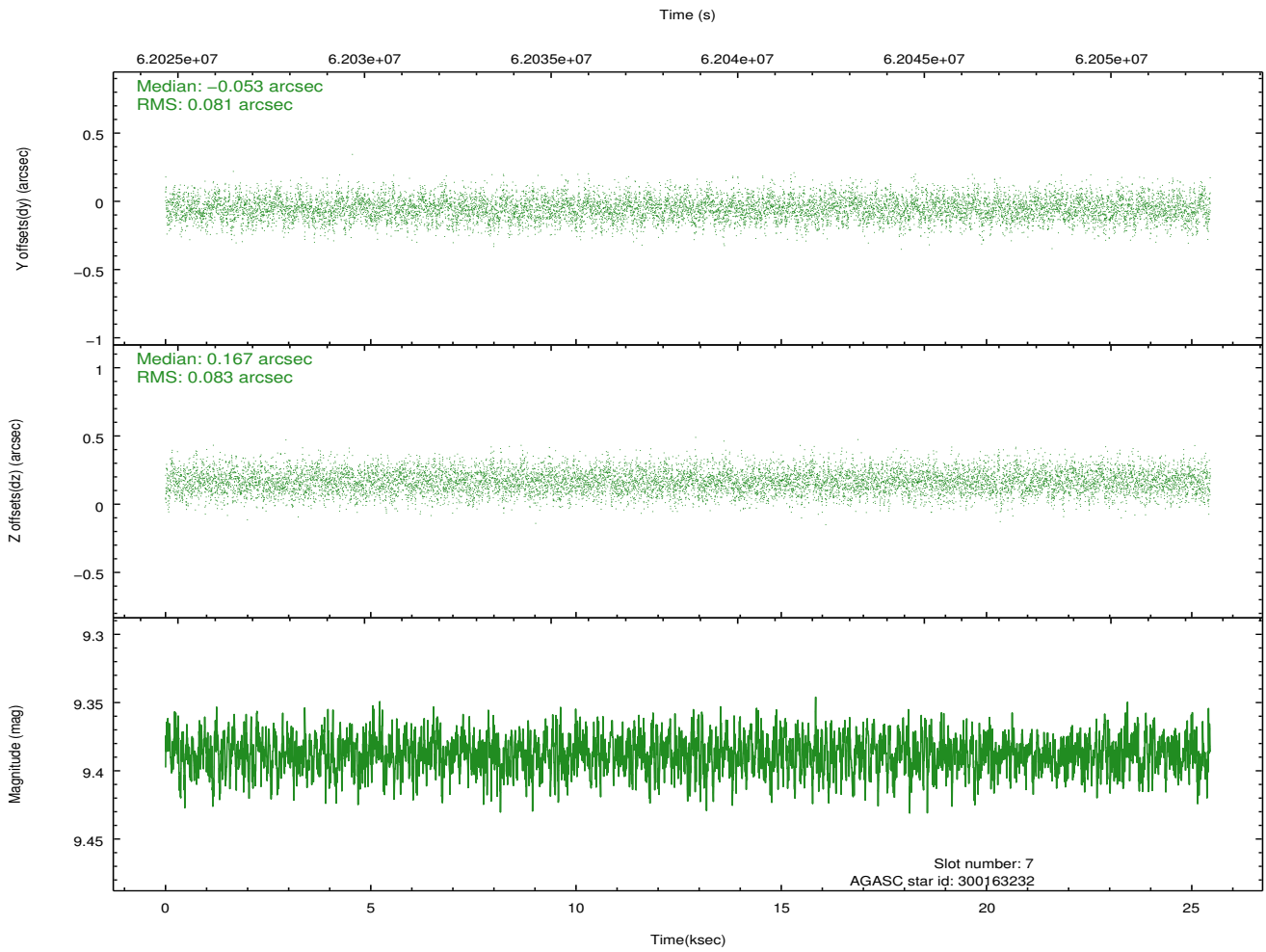
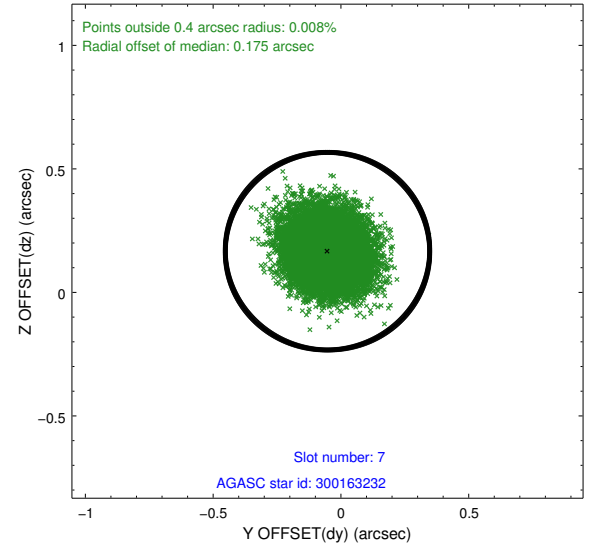
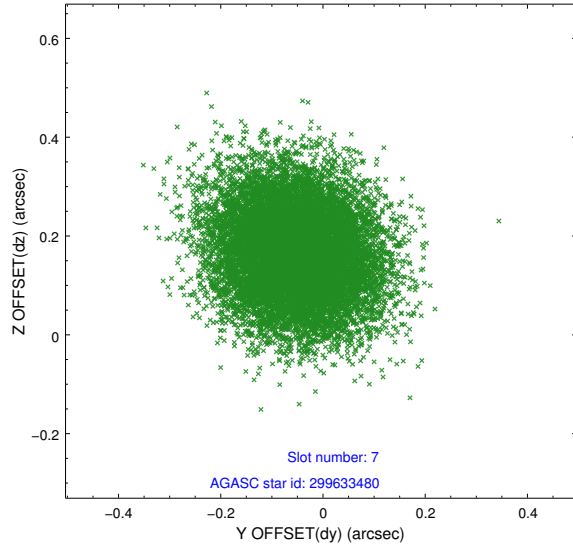
2.4.3 Slot 5



2.4.4 Slot 6

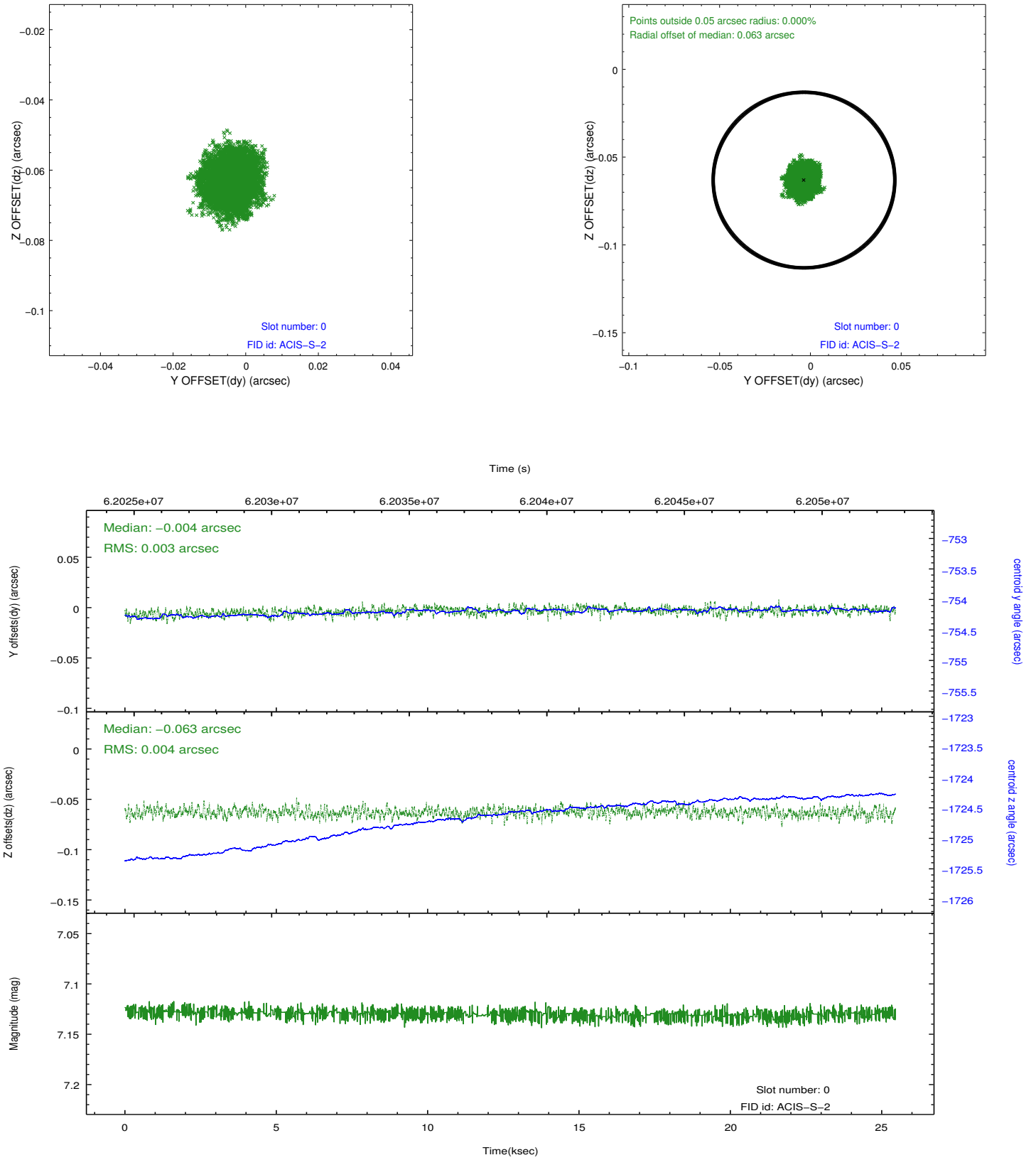


2.4.5 Slot 7

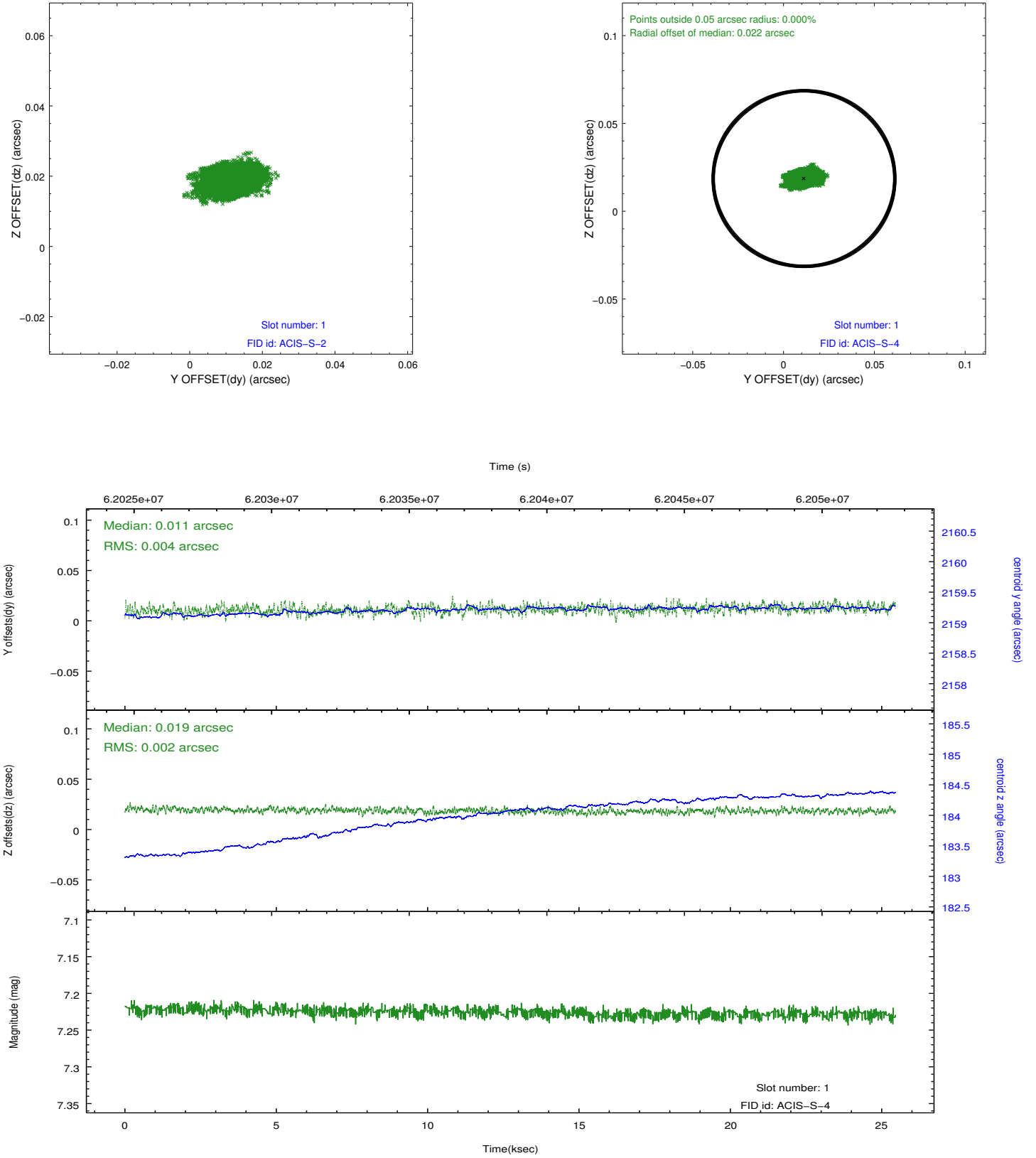


2.5 FID Slots

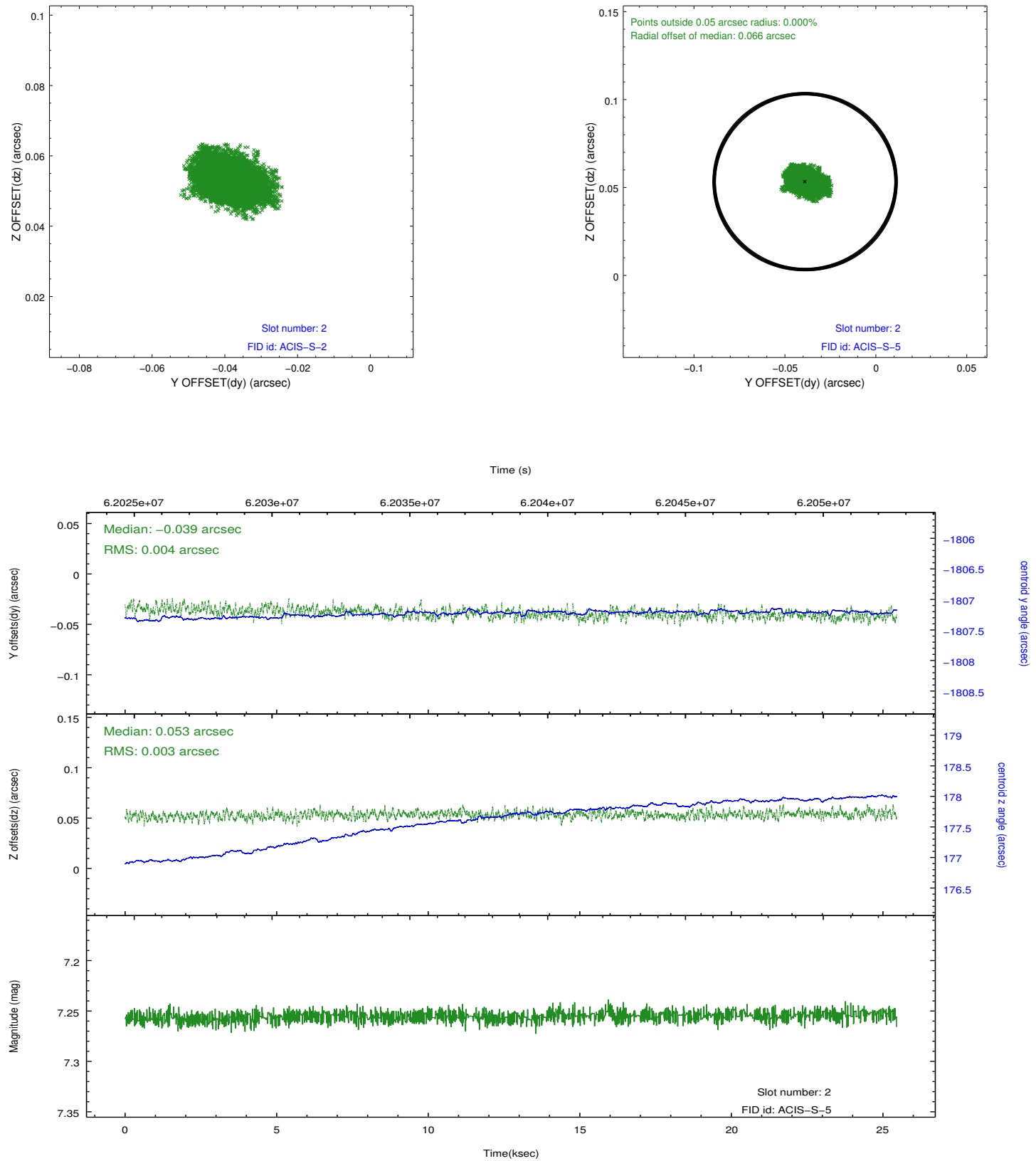
2.5.1 Slot 0



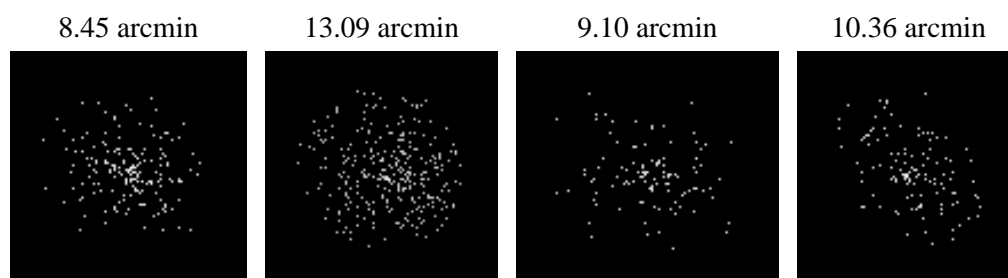
2.5.2 Slot 1



2.5.3 Slot 2



3 Point Sources



A Summary

A.1 Status

V&V Scientist	Jen Lauer
V&V Date (YYYY-MM-DD)	2009.11.27
V&V Edition	1
V&V Disposition and Status	OK
V&V Charge Time	24.169

A.2 Comments

Focal plane temperature is warmer than -118.7 C degrees during the entire observation. This temperature is the upper limit of the verified ACIS calibration for the front-illuminated chips. The focal plane temperature is warmer than -116.7 degrees C for the entire observation. This temperature is the upper limit of the verified ACIS calibration for the back-illuminated chips. The ACIS spectral response calibration is less accurate at these warmer temperatures than it is at -119.7 C. Users whose science objectives depend on the most accurate spectral response (ie: fitting line-rich spectra) may notice an effect. Users whose science objectives do not depend on the most accurate spectral response should not notice an effect.

=====

This reprocessing of the data applies no CTI correction because none is available for that temperature.