

# V&V Reference Report

## L2 ASCDS Version : 8.4.4

Observation 8630 - L2 Version 2  
Chandra X-Ray Center

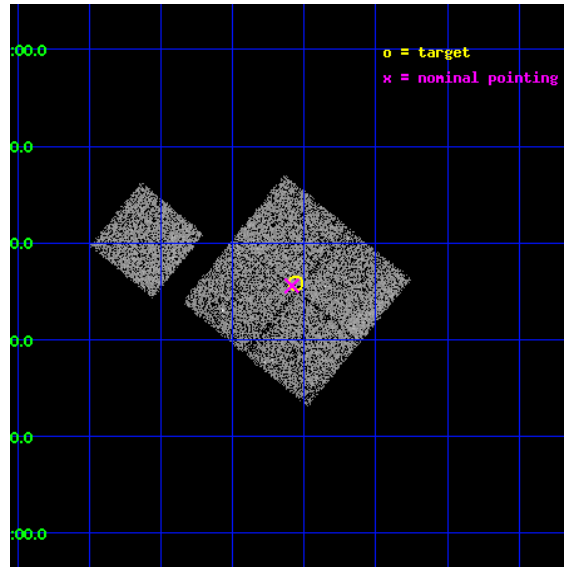
L2 Processing Date : May 5 2012

## Contents

<b>1</b>	<b>Front</b>	<b>2</b>
<b>2</b>	<b>OBI</b>	<b>3</b>
2.1	OBI . . . . .	3
2.1.1	Images . . . . .	3
2.1.2	Bias . . . . .	3
2.1.3	Parameters . . . . .	4
2.1.4	Events . . . . .	4
2.2	Compared Parameters . . . . .	5
2.3	Aspect . . . . .	6
2.4	Star Slots . . . . .	9
2.4.1	Slot 3 . . . . .	9
2.4.2	Slot 4 . . . . .	10
2.4.3	Slot 5 . . . . .	11
2.4.4	Slot 6 . . . . .	12
2.4.5	Slot 7 . . . . .	13
2.5	FID Slots . . . . .	14
2.5.1	Slot 0 . . . . .	14
2.5.2	Slot 1 . . . . .	15
2.5.3	Slot 2 . . . . .	16
<b>A</b>	<b>Summary</b>	<b>17</b>
A.1	Status . . . . .	17
A.2	Comments . . . . .	17

# 1 Front

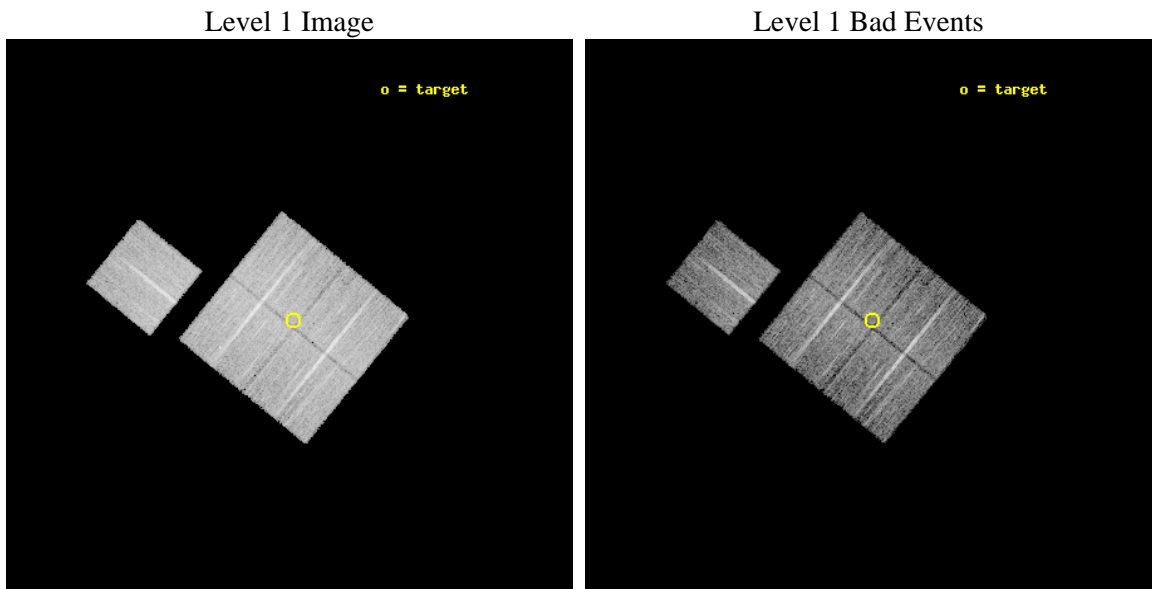
seq_num	900767	Sequence number
obs_id	8630	Observation id
title	Chandra Observations of the DEEP2 Fields	Proposal title
observer	Dr. Stephen Murray	Principal investigator
object	DEEP2 Field 4	Source name
dtcycle	0	&#160
cycle	P	events from which exps? Prim/Second/Both
ra_targ	37.889704	Observer's specified target RA [deg]
dec_targ	0.597439	Observer's specified target Dec [deg]
ra_nom	37.896448186477	Nominal RA [deg]
dec_nom	0.5929881563529	Nominal Dec [deg]
roll_nom	309.23861899477	Nominal Roll [deg]
revision	2	Processing version of data
ontime	8577.0703017712	Sum of GTIs [s]
livetime	8465.0045639312	Livetime [s]
ontime0	8576.9471817613	Sum of GTIs [s]
ontime1	8576.9882217646	Sum of GTIs [s]
ontime2	8573.8882713914	Sum of GTIs [s]
ontime3	8577.0703017712	Sum of GTIs [s]
ontime6	8576.906141758	Sum of GTIs [s]
l2events	29616	Number of level 2 events



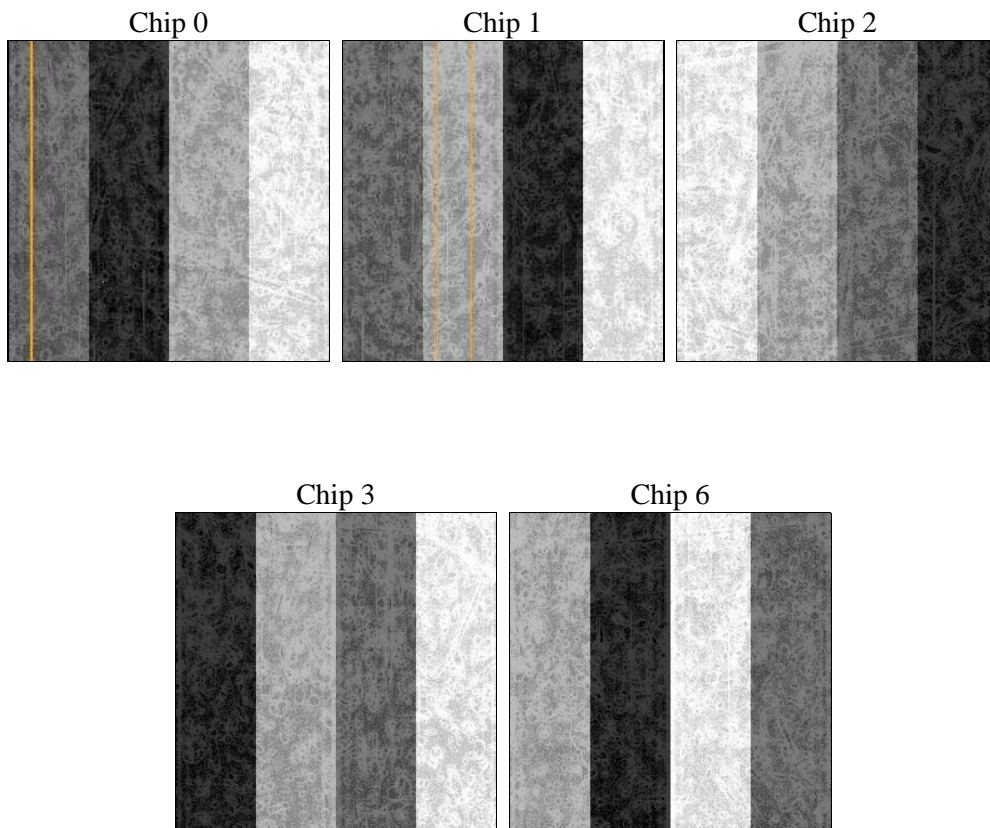
## 2 OBI

### 2.1 OBI

#### 2.1.1 Images



#### 2.1.2 Bias



### 2.1.3 Parameters

obi_num	0	Obi number	sched_exp_time	8800.000000	[s] Scheduled observation exposure time
ascdsver	8.4.4	Processing system revision	ontime	8577.0703017712	Sum of GTIs [s]
caldsver	4.4.9	&#160	ontime0	8576.9471817613	Sum of GTIs [s]
date	2012-05-05T20:47:00	Date and time of file creation	ontime1	8576.9882217646	Sum of GTIs [s]
revision	2	Processing version of data	ontime2	8573.8882713914	Sum of GTIs [s]
			ontime3	8577.0703017712	Sum of GTIs [s]
			ontime6	8576.906141758	Sum of GTIs [s]
			l1events	354256	Number of level 1 events

### 2.1.4 Events

	ccd 0	ccd 1	ccd 2	ccd 3	ccd 6
level 1 events	65937	69018	76803	70722	71776
rejected events	59019	61170	69863	63950	64536
rejected %	89%	88%	90%	90%	89%

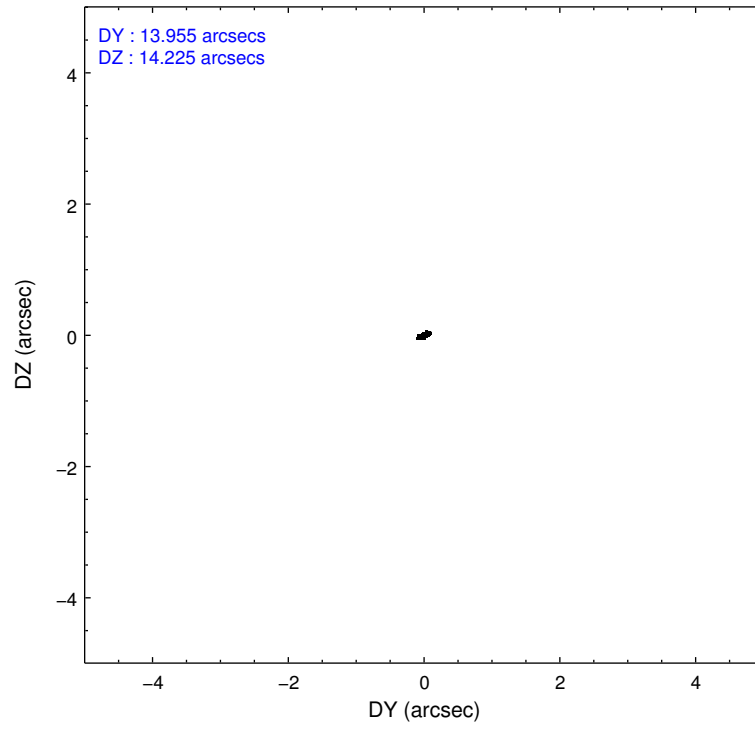
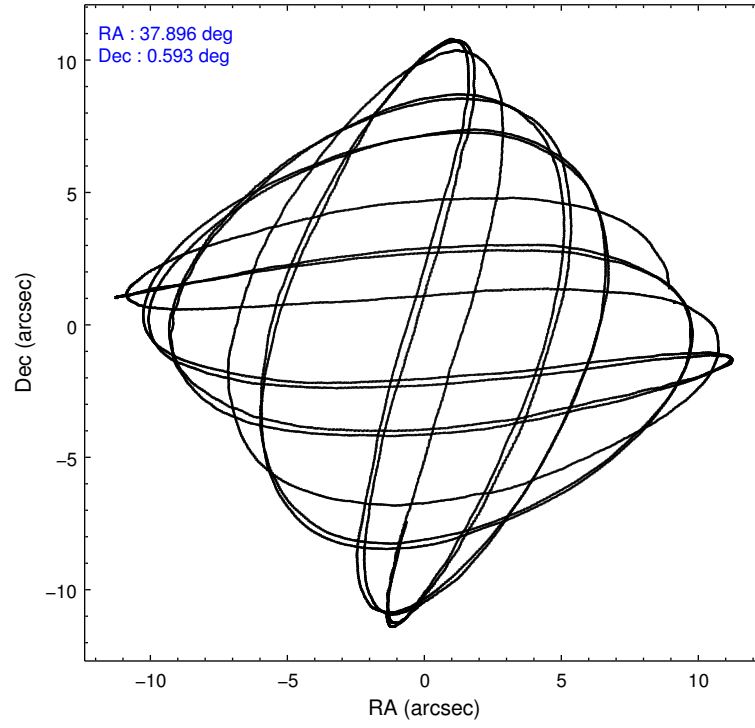
	ccd 0	ccd 1	ccd 2	ccd 3	ccd 6
grade 0 events	2351	2718	2570	2398	2485
	3%	3%	3%	3%	3%
grade 1 events	38	47	30	33	29
	0%	0%	0%	0%	0%
grade 2 events	1653	1779	1612	1495	1562
	2%	2%	2%	2%	2%
grade 3 events	814	905	698	748	792
	1%	1%	0%	1%	1%
grade 4 events	735	868	782	780	779
	1%	1%	1%	1%	1%
grade 5 events	2438	2754	2293	2771	2752
	3%	3%	2%	3%	3%
grade 6 events	1367	1583	1281	1352	1624
	2%	2%	1%	1%	2%
grade 7 events	56541	58364	67537	61145	61753
	85%	84%	87%	86%	86%

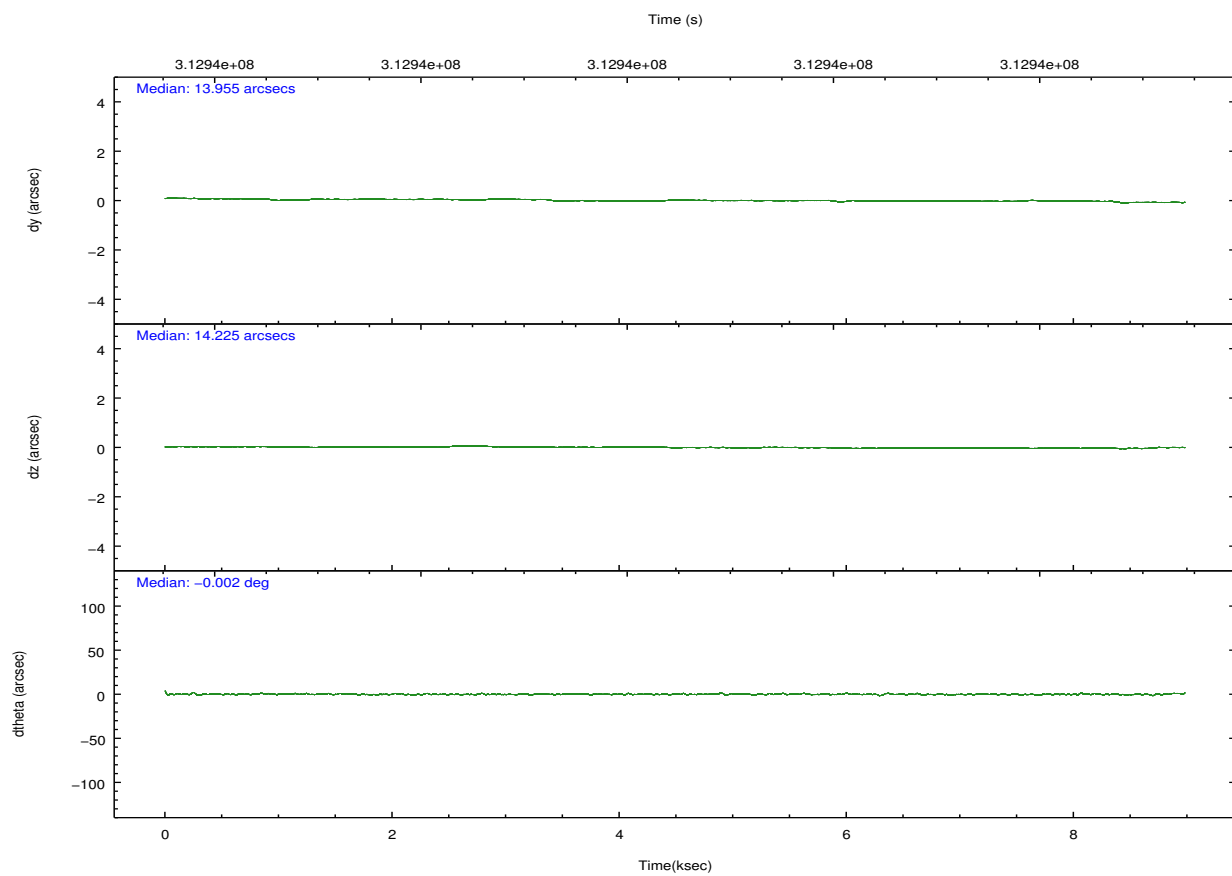
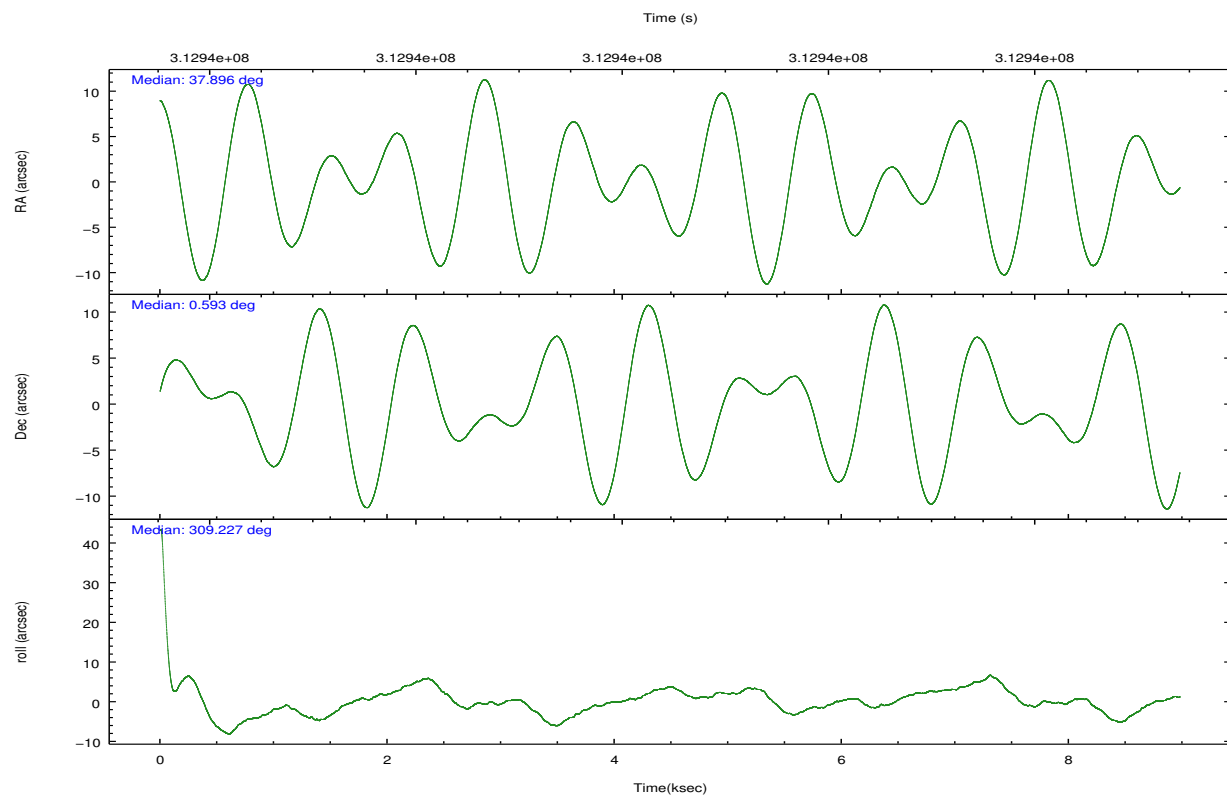


## 2.2 Compared Parameters

Parameter	Planned	Actual	Parameter	Planned	Actual
Instrument	ACIS	ACIS	Obspar format version number	7	7
Detector	ACIS-01236	ACIS-01236	Obspar file type	PREDICTED	ACTUAL
Grating	NONE	NONE	Obspar update status	NONE	UPDATED
Data mode	VFAINT	VFAINT	CCD I0 on	Y	Y
Observation mode	POINTING	POINTING	CCD I1 on	Y	Y
[deg] Pointing RA	37.870699	37.89644818647673	CCD I2 on	Y	Y
[deg] Pointing Dec	0.602630	0.5929881563528978	CCD I3 on	Y	Y
[deg] Pointing Roll	309.030200	309.2386189947725	CCD S0 on	N	N
[mm] SIM focus pos	-0.782348	-0.7809083437167272	CCD S1 on	N	N
[mm] SIM defocus	0	0.001439871863259334	CCD S2 on	O1	Y
[mm] SIM translation stage pos	-233.592463	-233.5874344608287	CCD S3 on	N	N
[mm] SIM translation stage offset	0	-0.005018542100998502	CCD S4 on	N	N
[s] Observation start time (MET)	312936151.184000	312935775.42729	CCD S5 on	N	N
Observation start date	2007-12-01T22:41:26	2007-12-01T22:36:15	Number of optional ACIS chips dropped	0	0
[s] Observation end time (MET)	312944951.184000	312945728.69027	On-chip summing requested	N	N
Observation end date	2007-12-02T01:08:06	2007-12-02T01:22:08	Subarray requested	NONE	NONE
Read mode	TIMED	TIMED	Alternating exposures requested	N	N
			[s] Primary exposure time	0.000000	3.1

## 2.3 Aspect



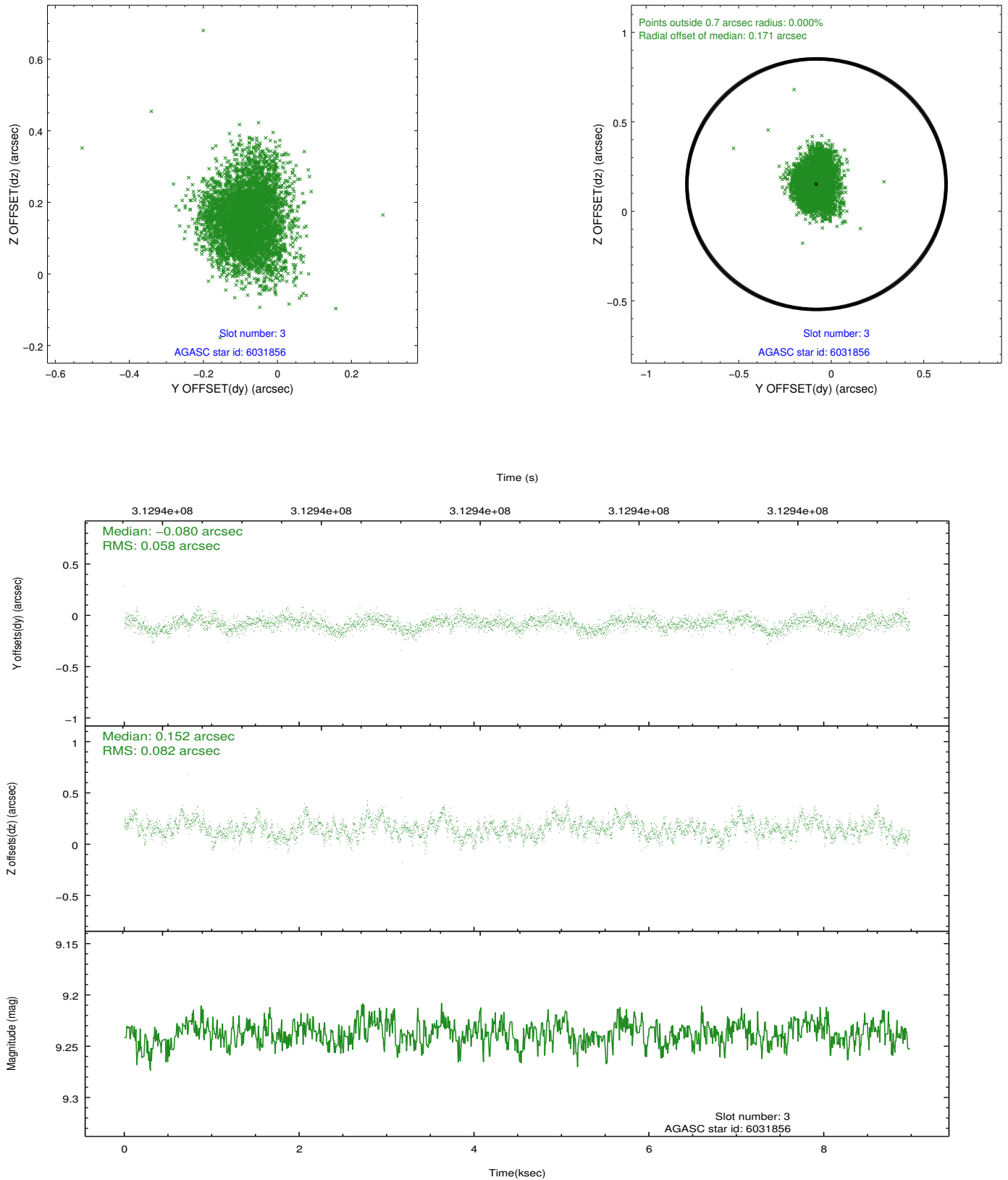


### Slot Statistics

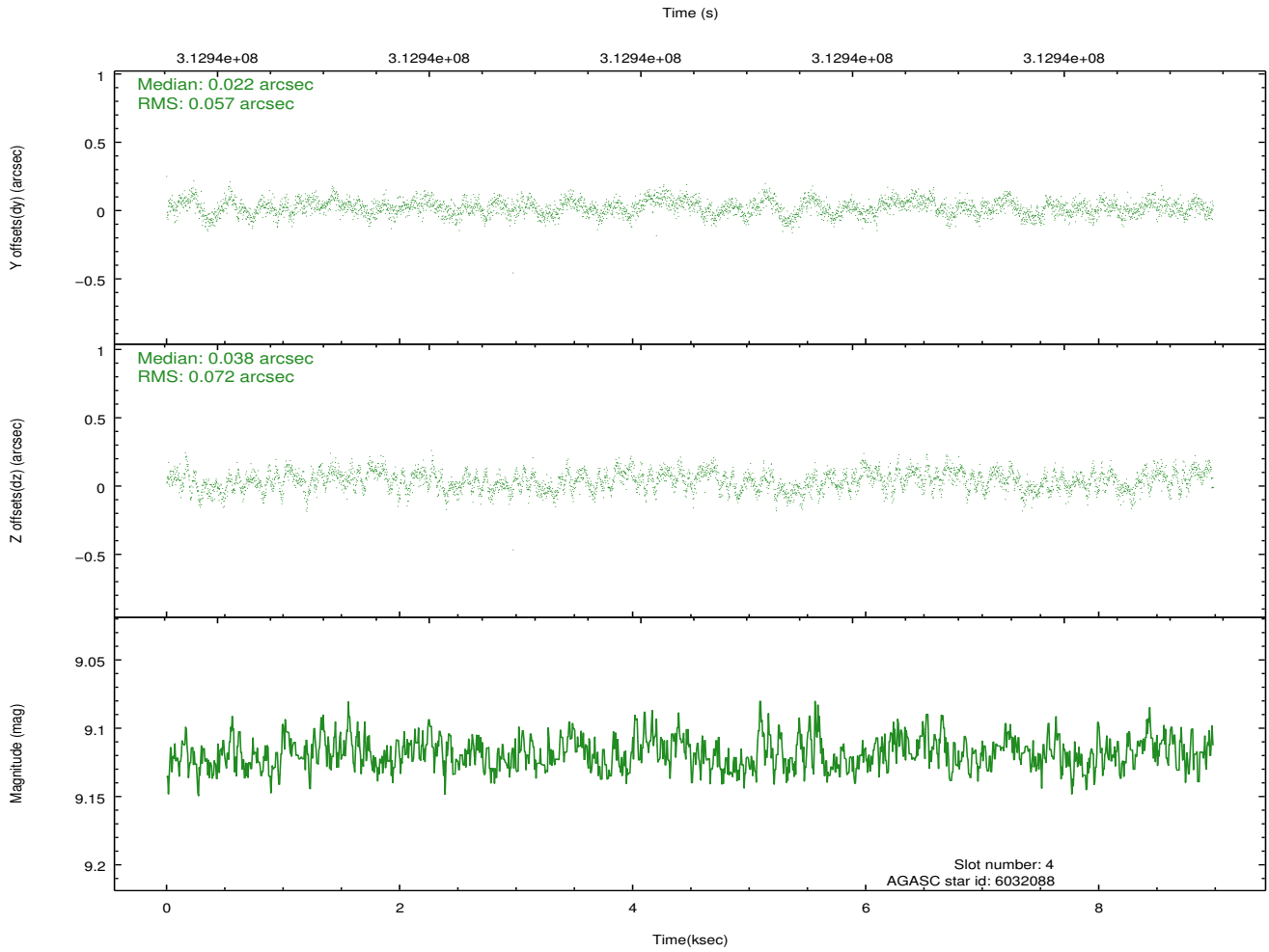
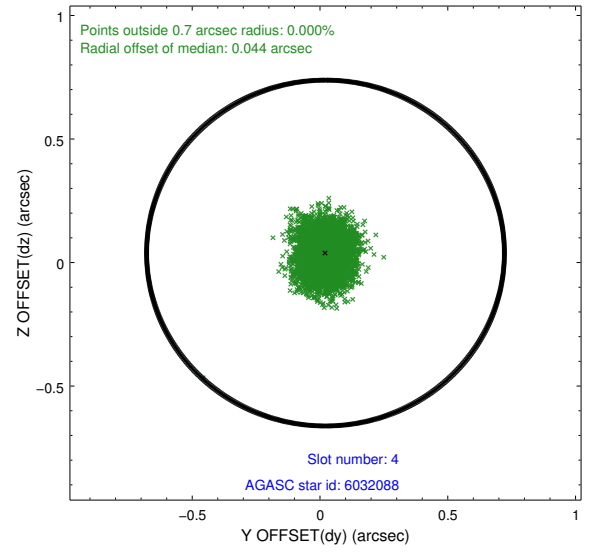
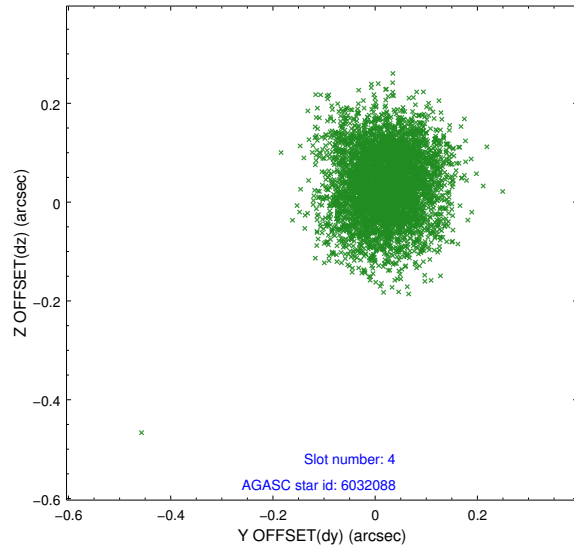
slot	status	id	mag	n_pts	med_dy	med_dz	dr1	dr2	ra	dec	mean_y	mean_z
0	FID	ACIS-I-1	7.24	2191	-0.011	0.018	0.008	0.014	0.000000	0.000000	925.52	-837.78
1	FID	ACIS-I-4	7.15	2191	0.186	0.016	0.007	0.012	0.000000	0.000000	2146.09	1061.73
2	FID	ACIS-I-5	7.22	2191	-0.273	0.036	0.006	0.012	0.000000	0.000000	-1821.97	1060.27
3	GUIDE	6031856	9.24	4380	-0.080	0.152	0.105	0.174	37.629179	0.065894	954.24	-1891.54
4	GUIDE	6032088	9.12	4378	0.022	0.038	0.098	0.155	37.532714	0.102881	632.46	-2078.15
5	GUIDE	6033288	9.02	4381	0.045	-0.063	0.088	0.146	37.919400	0.743225	-282.49	454.55
6	GUIDE	6034048	10.07	4378	0.056	-0.058	0.184	0.298	38.012071	1.174623	-1279.21	1692.08
7	GUIDE	6042384	6.39	4381	-0.035	-0.052	0.082	0.139	37.688348	0.255749	557.01	-1296.19

## 2.4 Star Slots

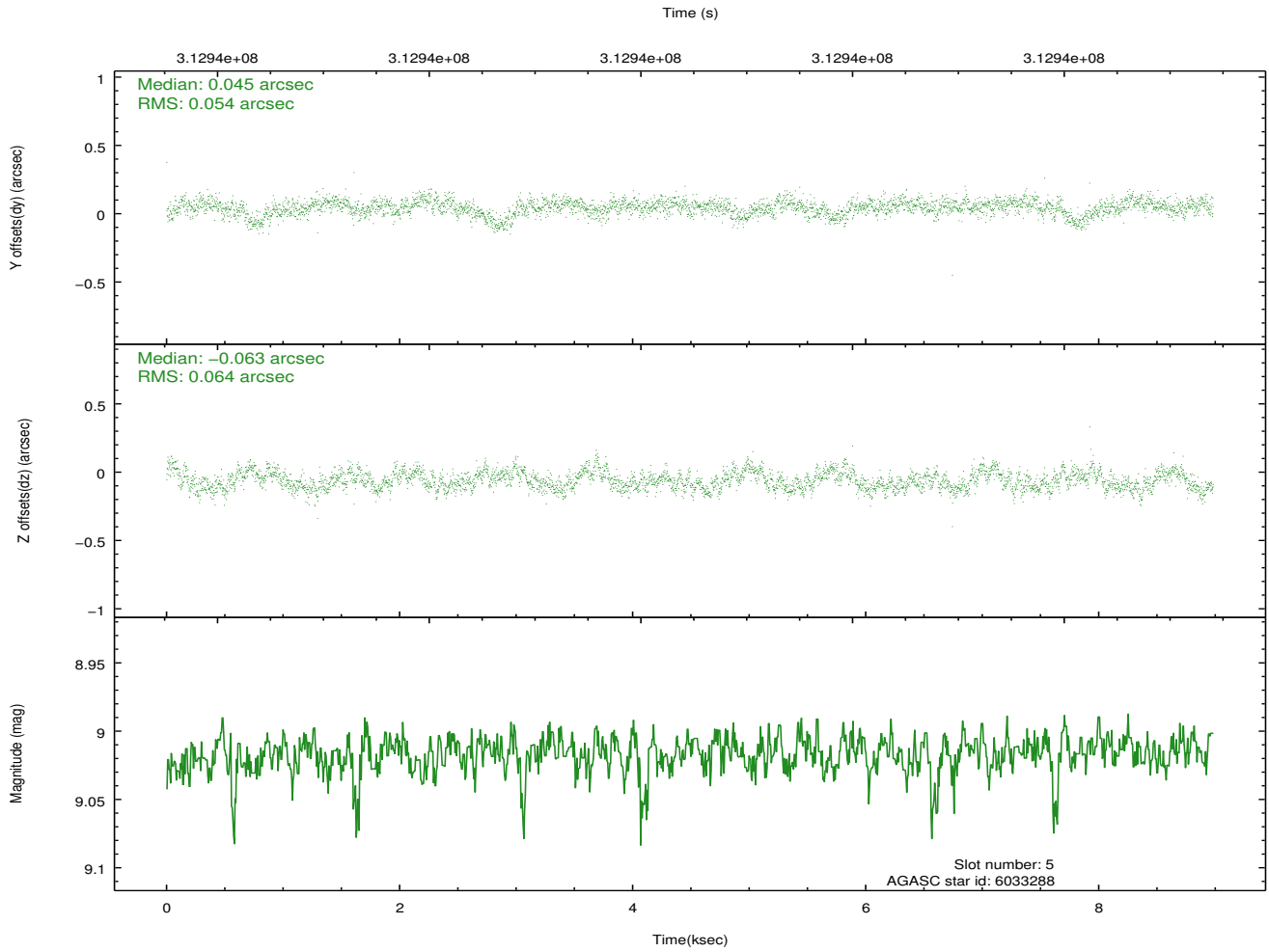
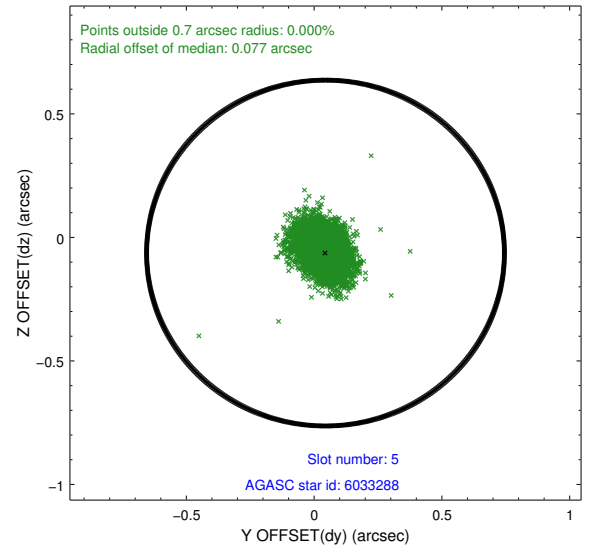
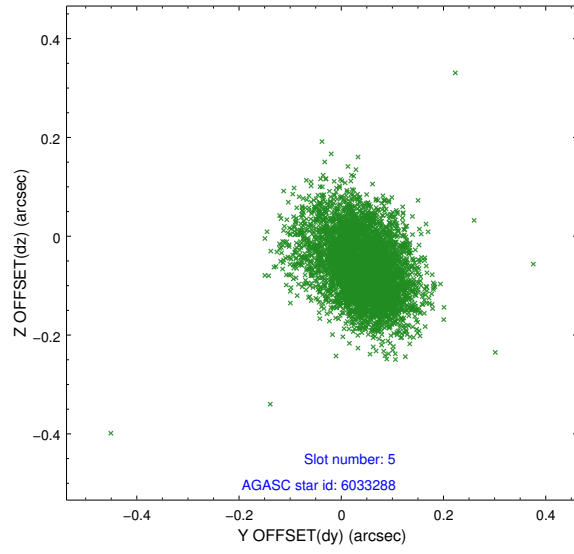
### 2.4.1 Slot 3



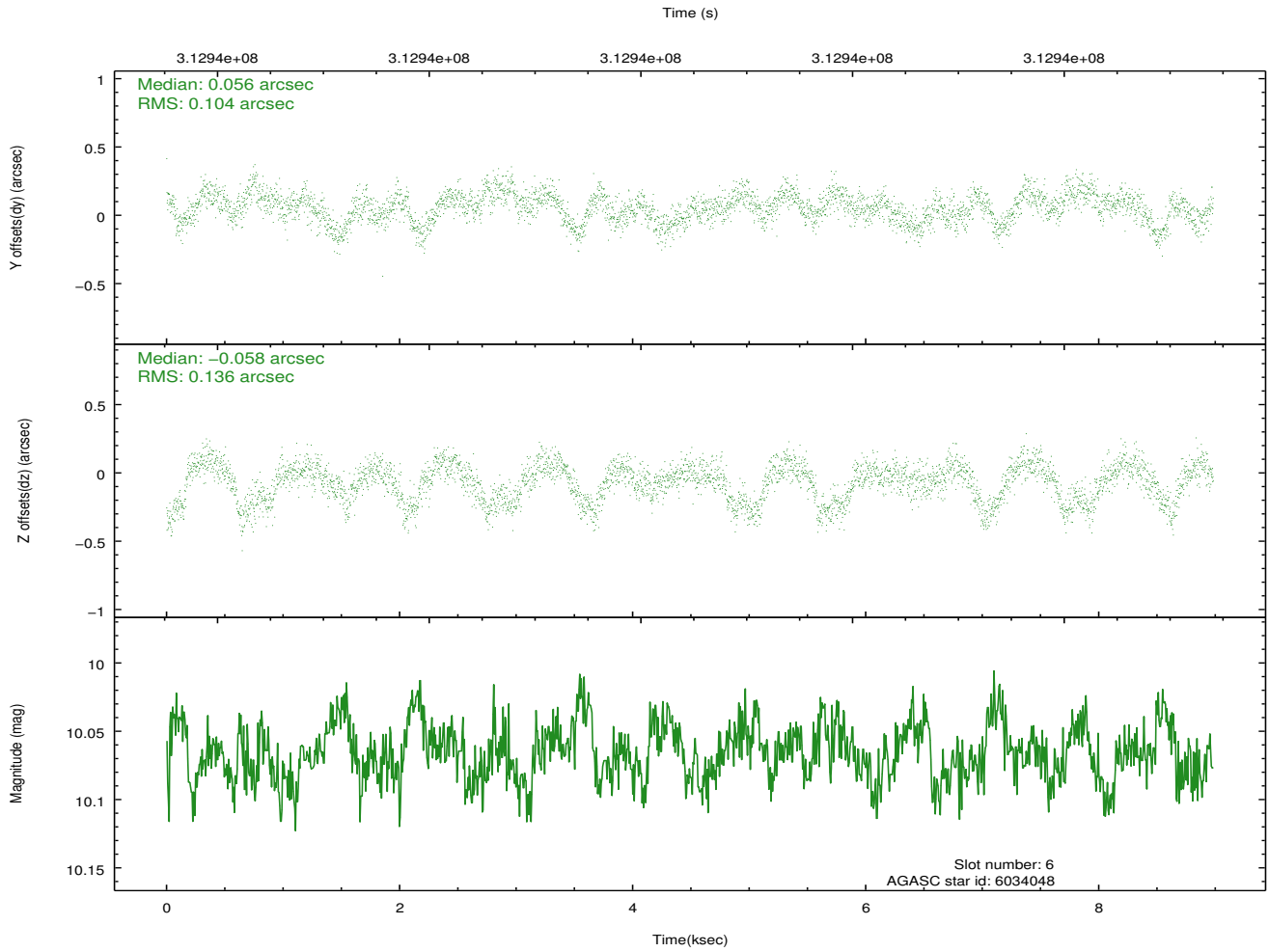
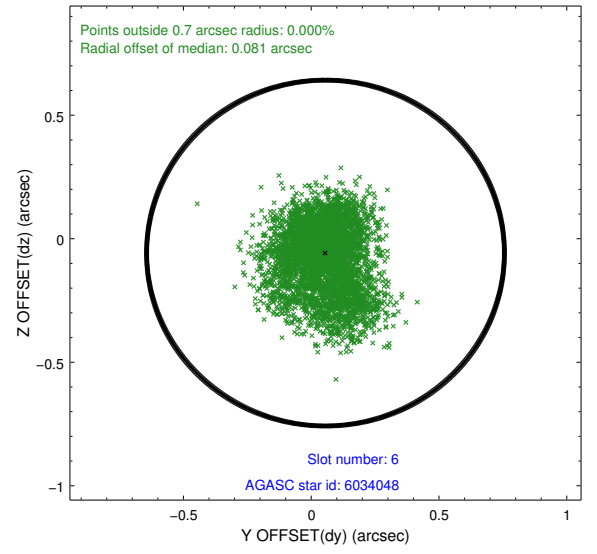
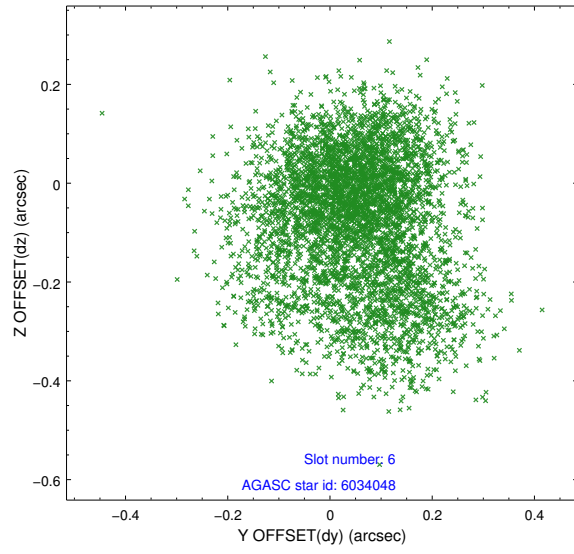
## 2.4.2 Slot 4



### 2.4.3 Slot 5

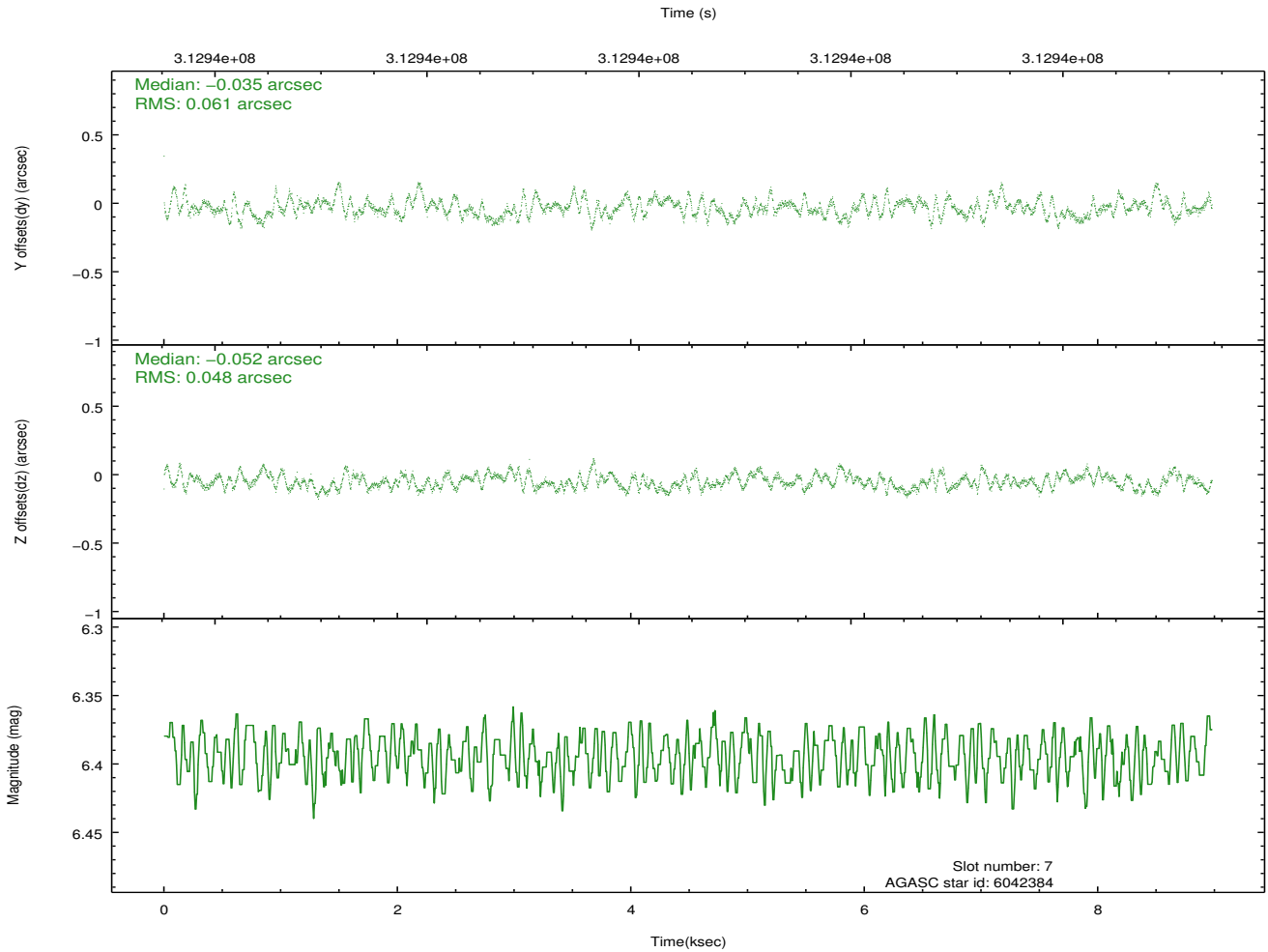
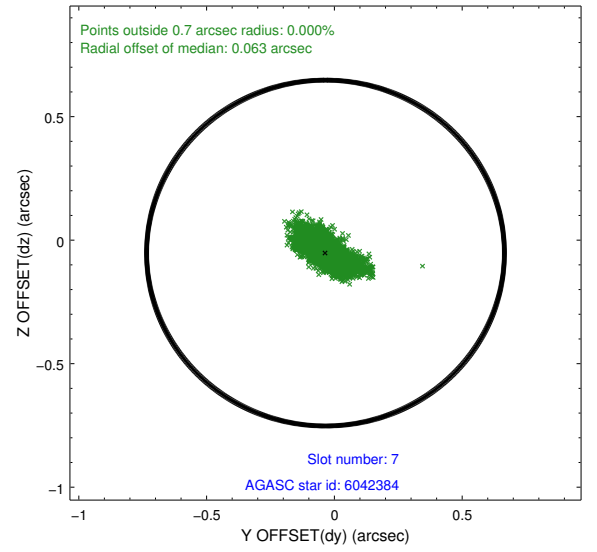
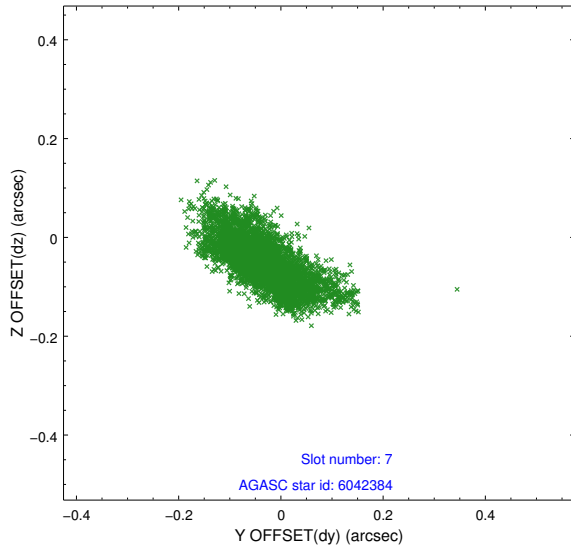


## 2.4.4 Slot 6



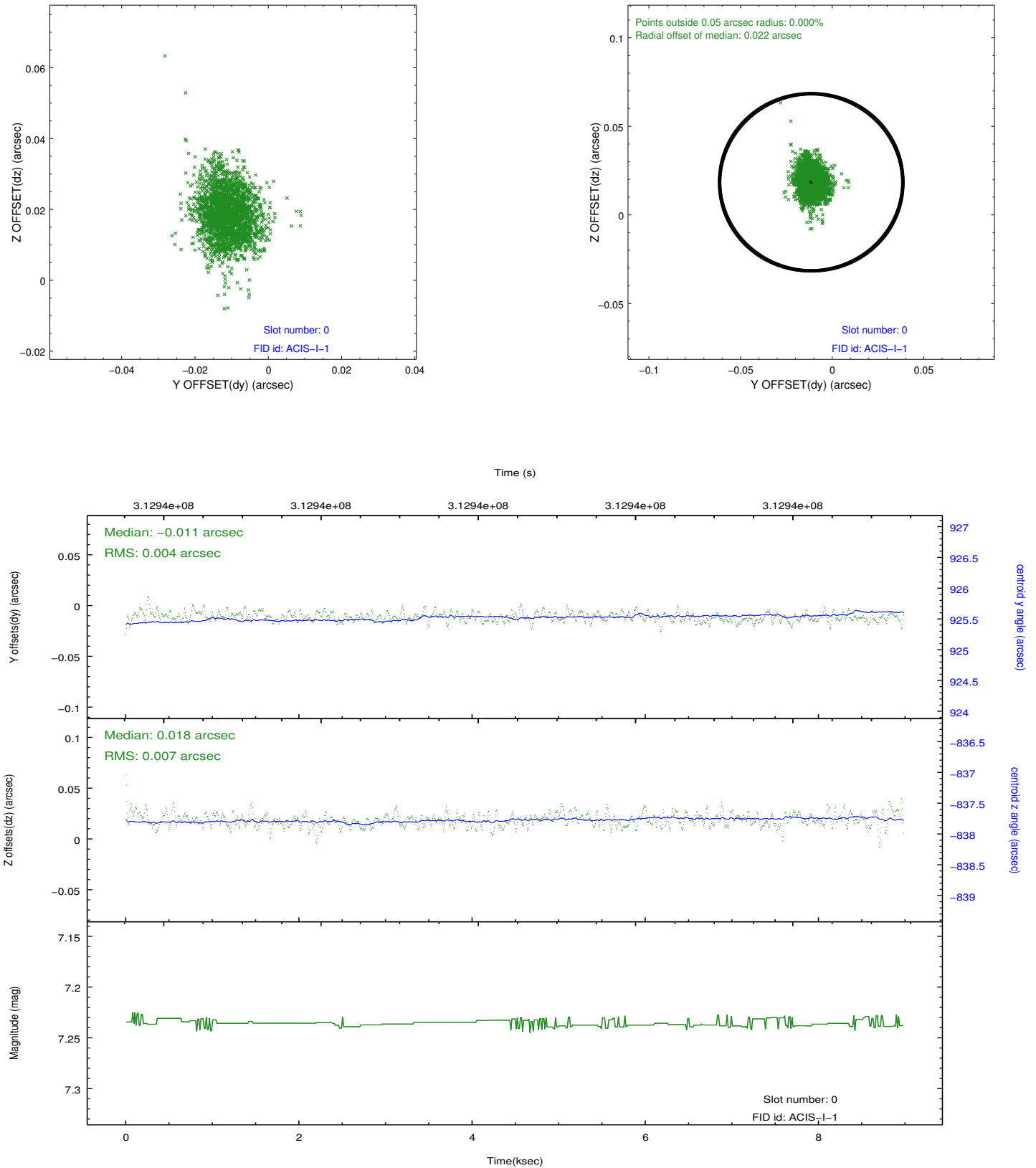


## 2.4.5 Slot 7

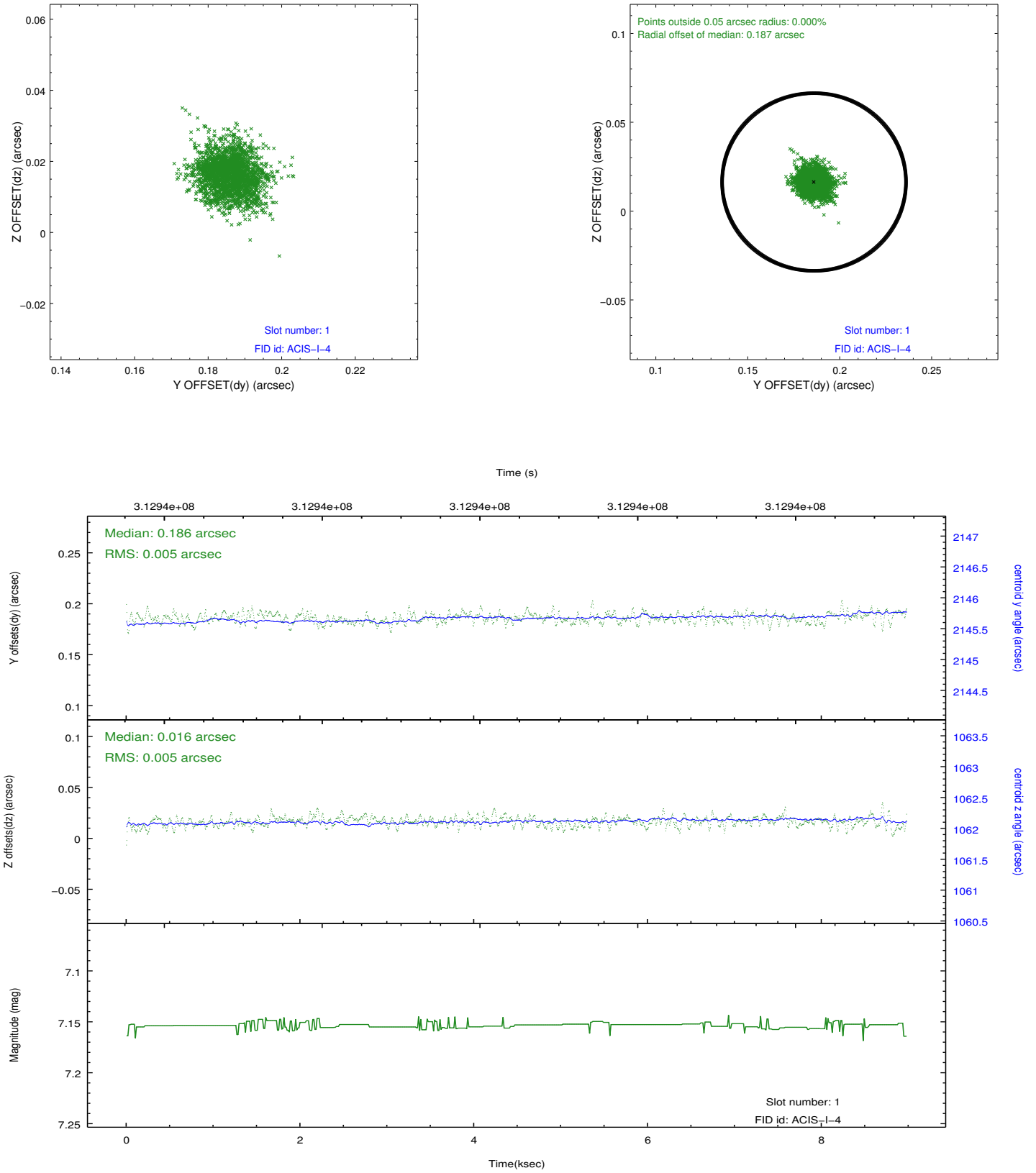


## 2.5 FID Slots

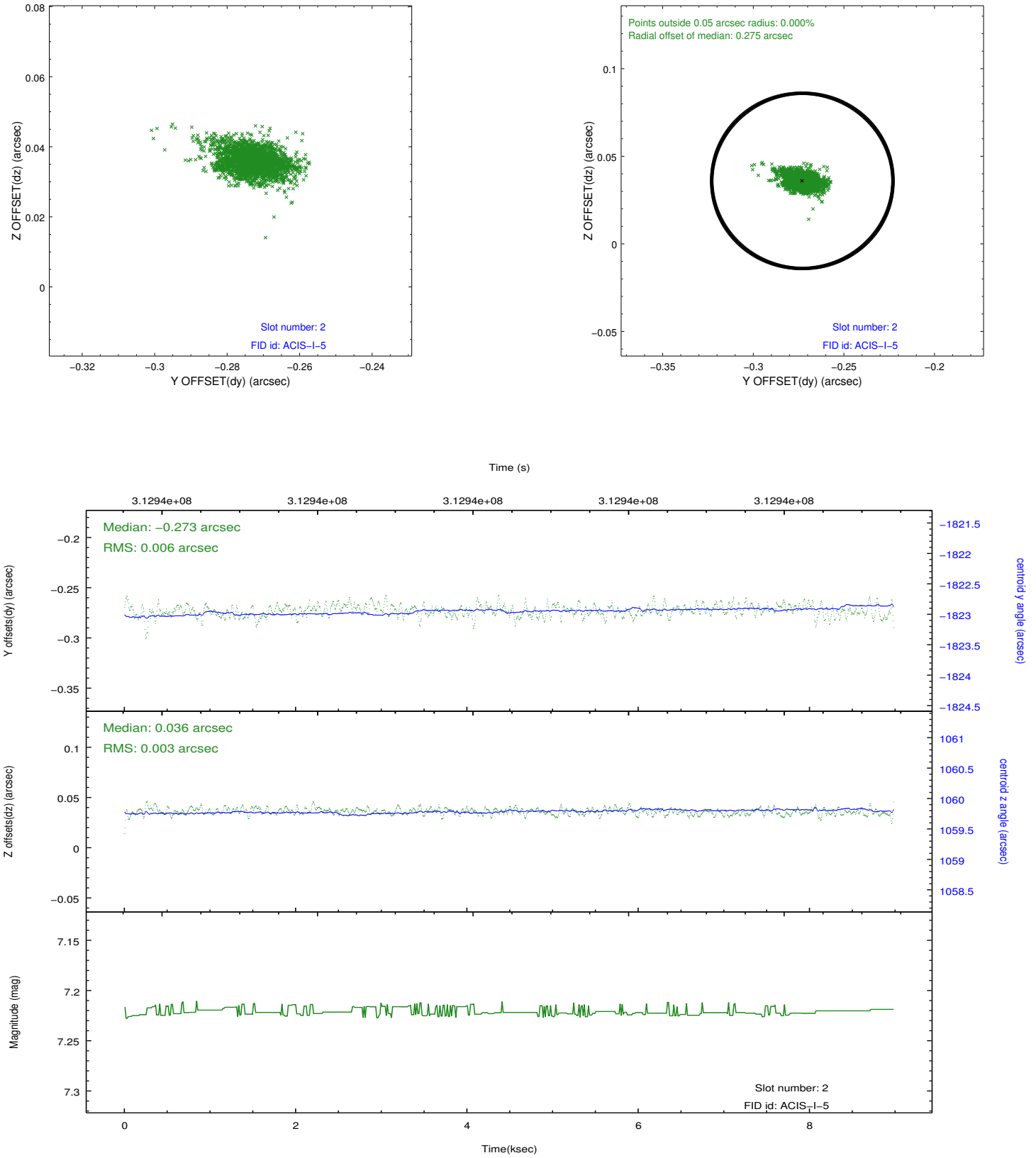
### 2.5.1 Slot 0



## 2.5.2 Slot 1



### 2.5.3 Slot 2



## A Summary

### A.1 Status

V&V Scientist	Jen Lauer
V&V Date (YYYY-MM-DD)	2012.05.07
V&V Edition	1
V&V Disposition and Status	OK
V&V Charge Time	8.57770006

### A.2 Comments