

# V&V Reference Report

## L2 ASCDS Version : 8.4.4

Observation 8560 - L2 Version 2  
Chandra X-Ray Center

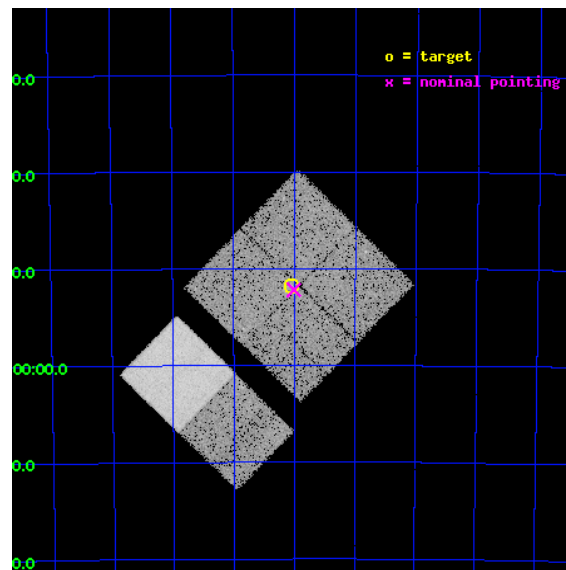
L2 Processing Date : Apr 26 2012

## Contents

<b>1</b>	<b>Front</b>	<b>2</b>
<b>2</b>	<b>OBI</b>	<b>3</b>
2.1	OBI . . . . .	3
2.1.1	Images . . . . .	3
2.1.2	Bias . . . . .	3
2.1.3	Parameters . . . . .	4
2.1.4	Events . . . . .	4
2.2	Compared Parameters . . . . .	5
2.3	Aspect . . . . .	6
2.4	Star Slots . . . . .	9
2.4.1	Slot 3 . . . . .	9
2.4.2	Slot 4 . . . . .	10
2.4.3	Slot 5 . . . . .	11
2.4.4	Slot 6 . . . . .	12
2.4.5	Slot 7 . . . . .	13
2.5	FID Slots . . . . .	14
2.5.1	Slot 0 . . . . .	14
2.5.2	Slot 1 . . . . .	15
2.5.3	Slot 2 . . . . .	16
<b>A</b>	<b>Summary</b>	<b>17</b>
A.1	Status . . . . .	17
A.2	Comments . . . . .	17

# 1 Front

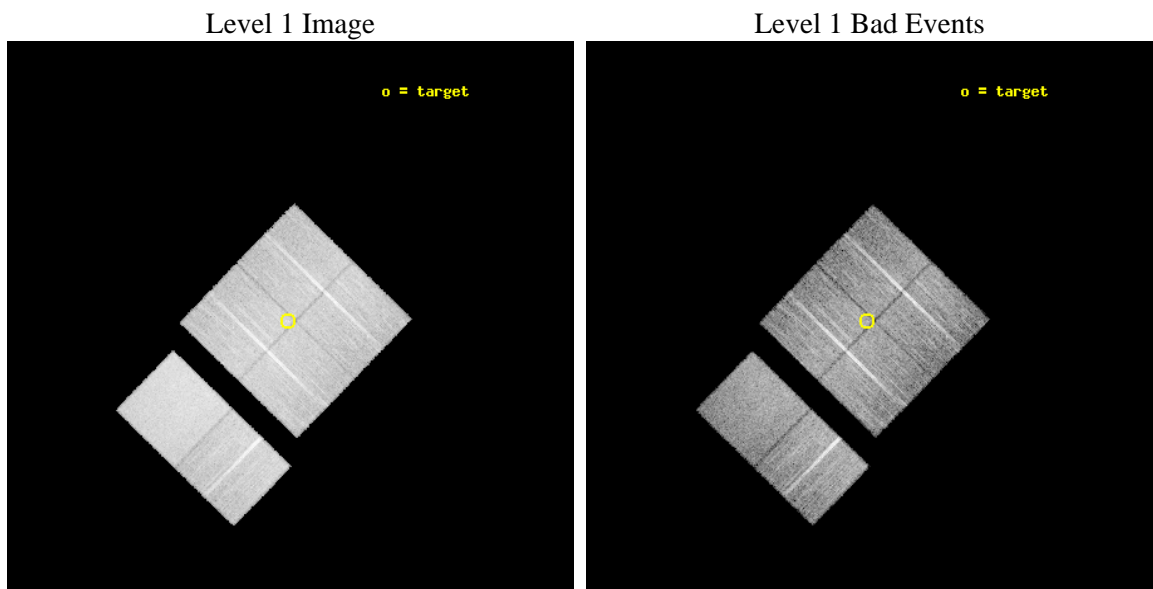
seq_num	300187	Sequence number
obs_id	8560	Observation id
title	Determining the population of Cataclysmic Variables in the Globular Cluster NGC2808	Proposal title
observer	Dr Remon Cornelisse	Principal investigator
object	NGC 2808	Source name
dtcycle	0	&#160
cycle	P	events from which exps? Prim/Second/Both
ra_targ	138.010833	Observer's specified target RA [deg]
dec_targ	-64.862833	Observer's specified target Dec [deg]
ra_nom	138.00185702088	Nominal RA [deg]
dec_nom	-64.869900610598	Nominal Dec [deg]
roll_nom	224.20053104005	Nominal Roll [deg]
revision	2	Processing version of data
ontime	10953.599959254	Sum of GTIs [s]
livetime	10814.898881104	Livetime [s]
ontime0	10953.599959254	Sum of GTIs [s]
ontime1	10953.599959254	Sum of GTIs [s]
ontime2	10953.599959254	Sum of GTIs [s]
ontime3	10953.599959254	Sum of GTIs [s]
ontime6	10953.599959254	Sum of GTIs [s]
ontime7	10953.599959254	Sum of GTIs [s]
l2events	114808	Number of level 2 events



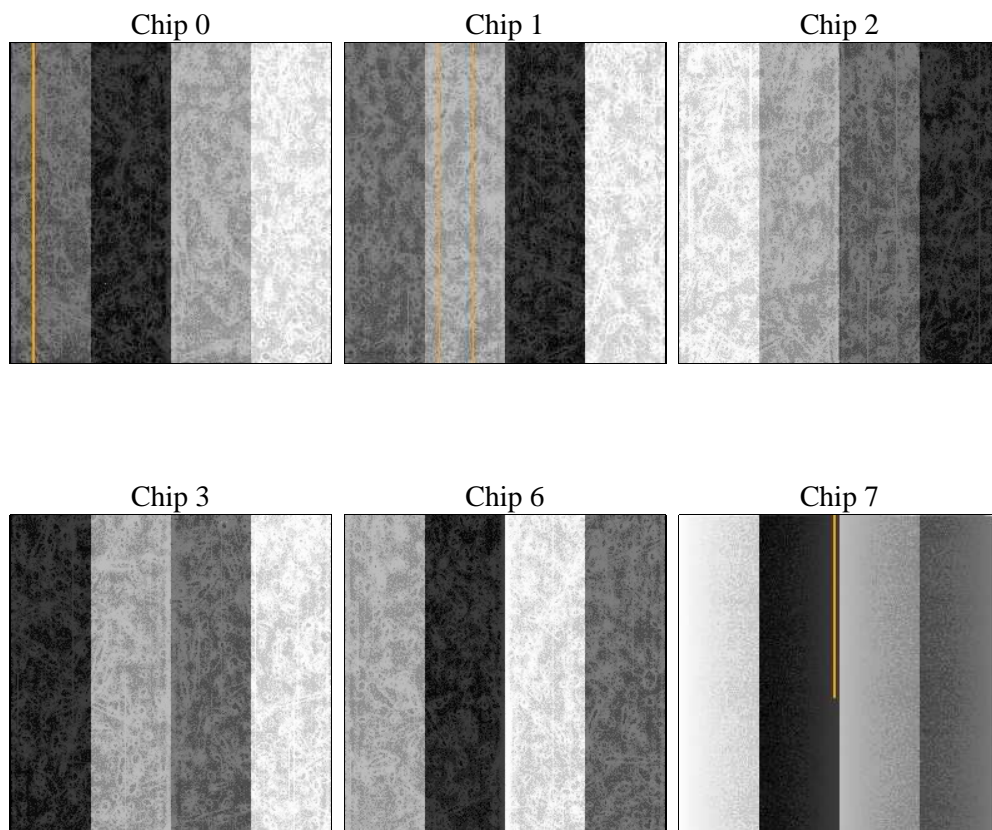
## 2 OBI

### 2.1 OBI

#### 2.1.1 Images



#### 2.1.2 Bias



### 2.1.3 Parameters

obi_num	0	Obi number	sched_exp_time	11000.000000	[s] Scheduled observation exposure time
ascdsver	8.4.4	Processing system revision	ontime	10953.599959254	Sum of GTIs [s]
caldsver	4.4.9	&#160	ontime0	10953.599959254	Sum of GTIs [s]
date	2012-04-27T01:35:15	Date and time of file creation	ontime1	10953.599959254	Sum of GTIs [s]
revision	2	Processing version of data	ontime2	10953.599959254	Sum of GTIs [s]
			ontime3	10953.599959254	Sum of GTIs [s]
			ontime6	10953.599959254	Sum of GTIs [s]
			ontime7	10953.599959254	Sum of GTIs [s]
			l1events	662757	Number of level 1 events

### 2.1.4 Events

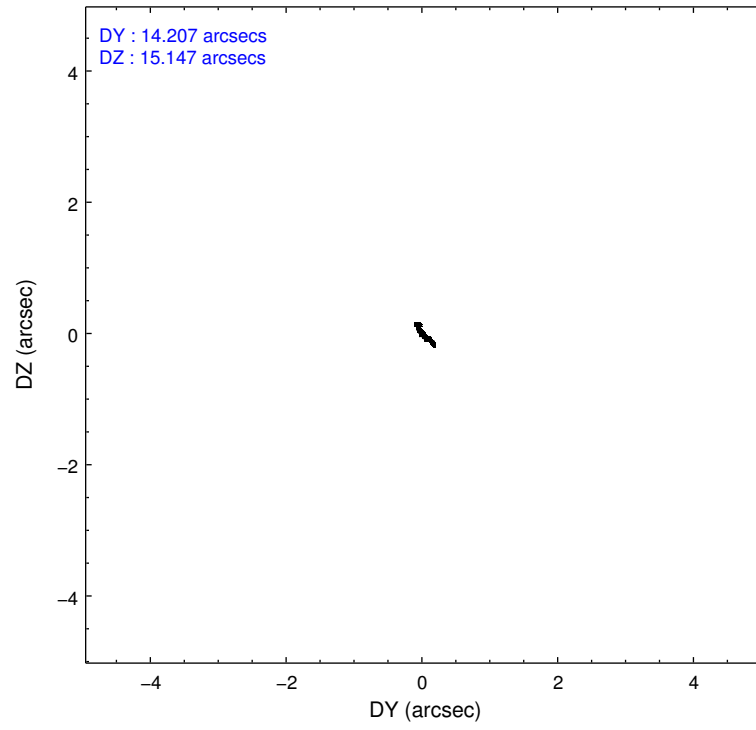
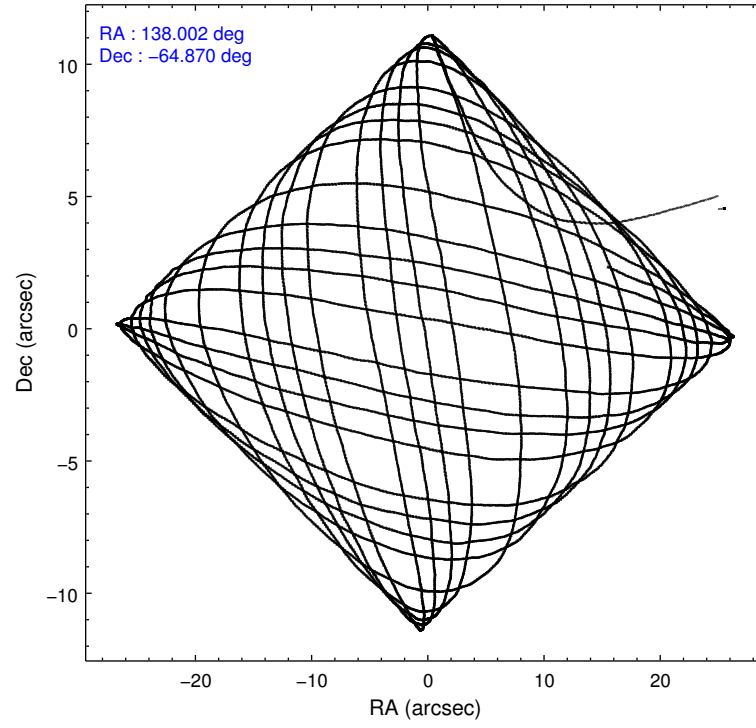
	ccd 0	ccd 1	ccd 2	ccd 3	ccd 6	ccd 7		ccd 0	ccd 1	ccd 2	ccd 3	ccd 6	ccd 7
level 1 events	98608	95939	106226	105945	110042	145997	grade 0 events	5589	5320	5484	5637	4733	5037
rejected events	85504	82348	93851	93164	97494	85436		5%	5%	5%	5%	4%	3%
rejected %	86%	85%	88%	87%	88%	58%	grade 1 events	70	53	79	62	46	157
								0%	0%	0%	0%	0%	0%
							grade 2 events	2833	3011	2594	2516	2786	12508
								2%	3%	2%	2%	2%	8%
							grade 3 events	1239	1320	1132	1236	1232	5265
								1%	1%	1%	1%	1%	3%
							grade 4 events	1157	1258	1138	1241	1200	5197
								1%	1%	1%	1%	1%	3%
							grade 5 events	4328	4466	4143	4858	5071	13738
								4%	4%	3%	4%	4%	9%
							grade 6 events	2291	2686	2037	2153	2603	32583
								2%	2%	1%	2%	2%	22%
							grade 7 events	81101	77825	89619	88242	92371	71512
								82%	81%	84%	83%	83%	48%

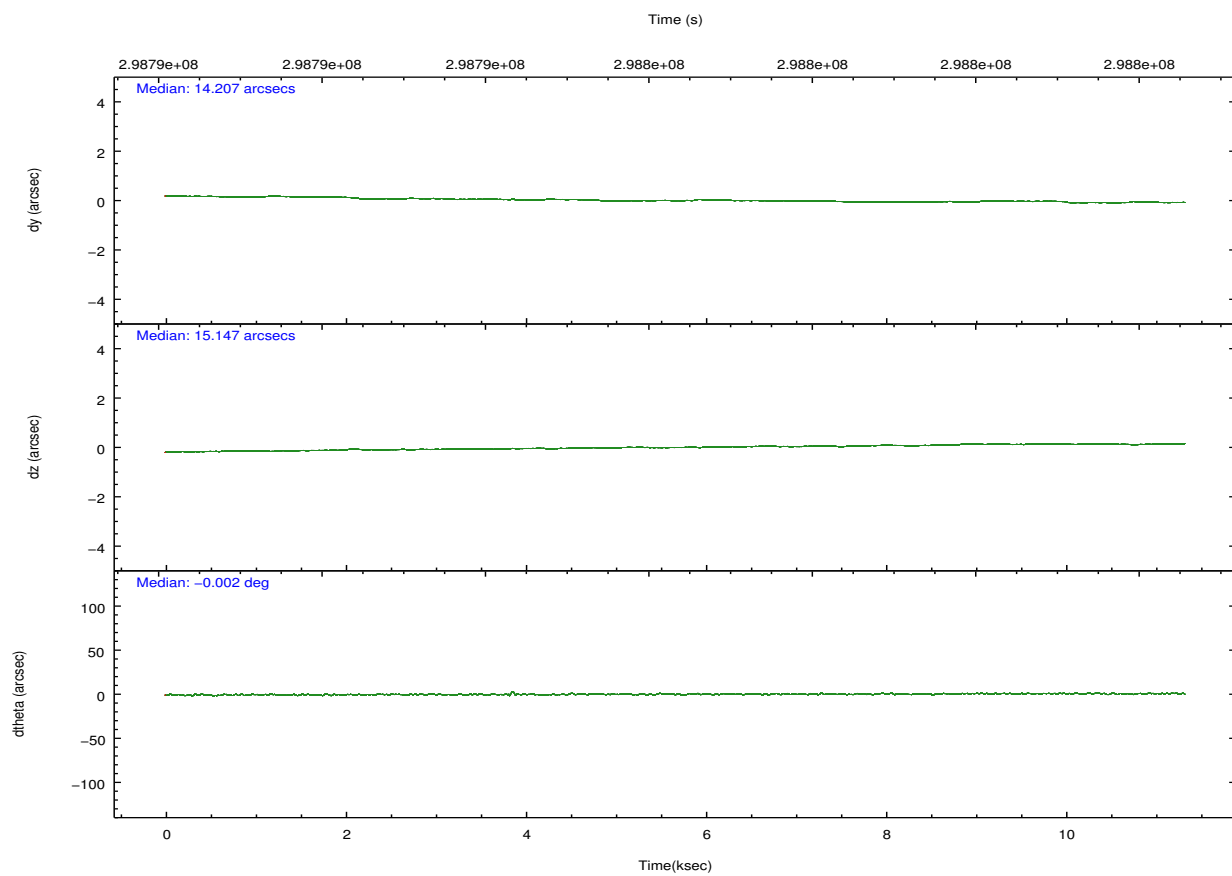
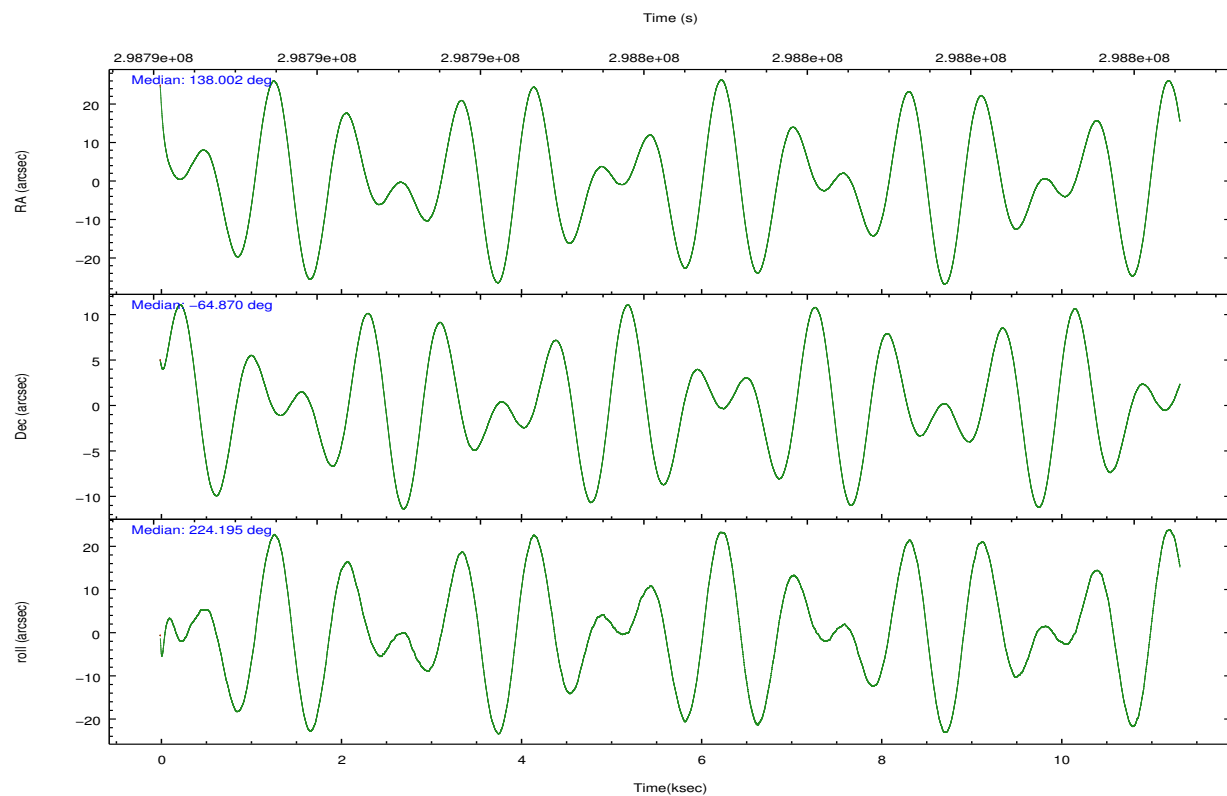


## 2.2 Compared Parameters

Parameter	Planned	Actual	Parameter	Planned	Actual
Instrument	ACIS	ACIS	Obspar format version number	7	7
Detector	ACIS-012367	ACIS-012367	Obspar file type	PREDICTED	ACTUAL
Grating	NONE	NONE	Obspar update status	NONE	UPDATED
Data mode	FAINT	FAINT	Number of optional ACIS chips dropped	0	0
Observation mode	POINTING	POINTING	On-chip summing requested	N	N
[deg] Pointing RA	138.019101	138.0018570208763	Subarray requested	NONE	NONE
[deg] Pointing Dec	-64.843435	-64.86990061059778	Alternating exposures requested	N	N
[deg] Pointing Roll	224.007486	224.2005310400541	[s] Primary exposure time	0.000000	3.2
[mm] SIM focus pos	-0.782348	-0.7809083437167272			
[mm] SIM defocus	0	0.001439871863259334			
[mm] SIM translation stage pos	-233.592463	-233.5874344608287			
[mm] SIM translation stage offset	0	-0.005018542100998502			
[s] Observation start time (MET)	298790967.184000	298789930.65937			
Observation start date	2007-06-21T05:28:22	2007-06-21T05:12:10			
[s] Observation end time (MET)	298801967.184000	298802567.37247			
Observation end date	2007-06-21T08:31:42	2007-06-21T08:42:47			
Read mode	TIMED	TIMED			

## 2.3 Aspect



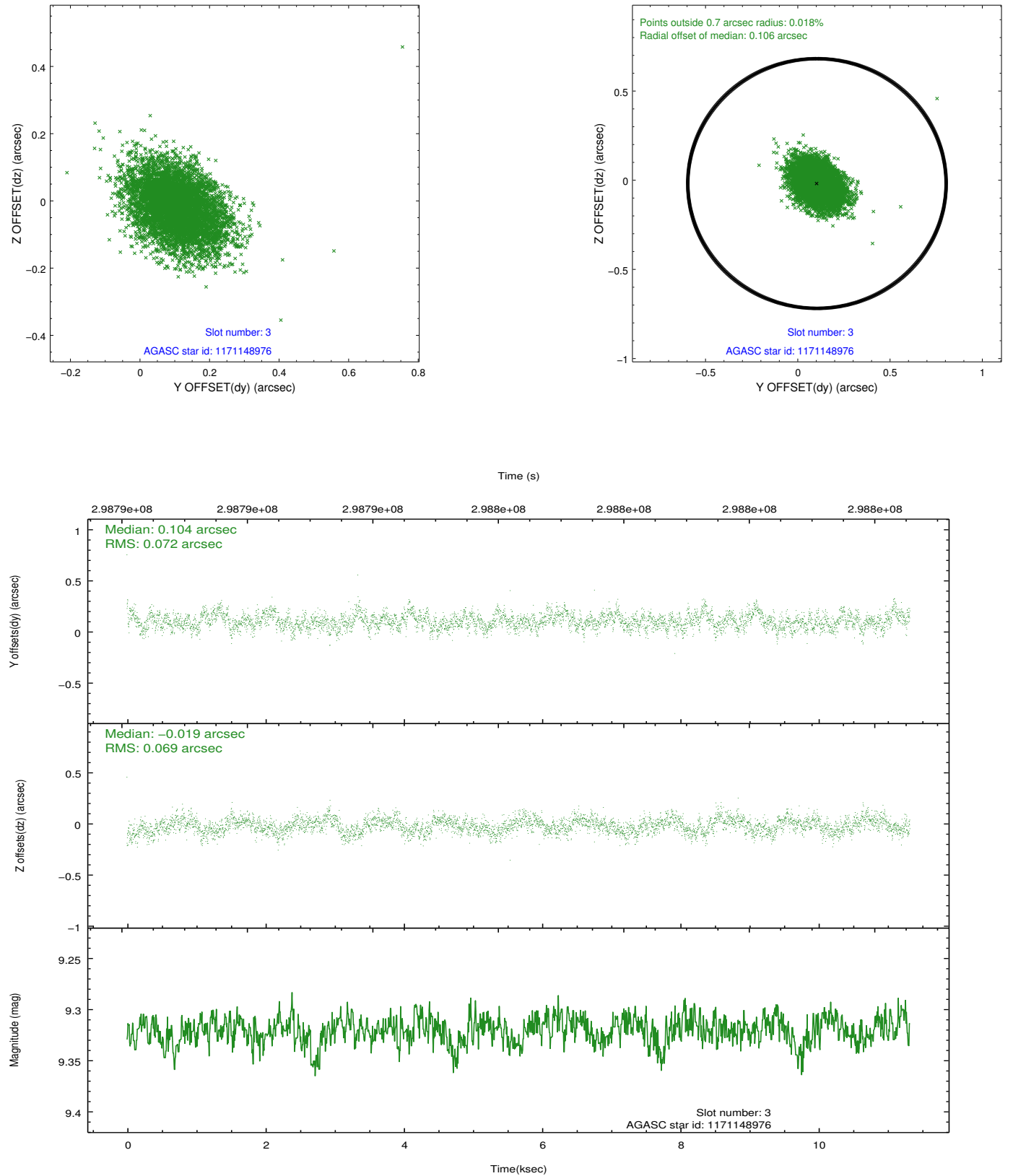


### Slot Statistics

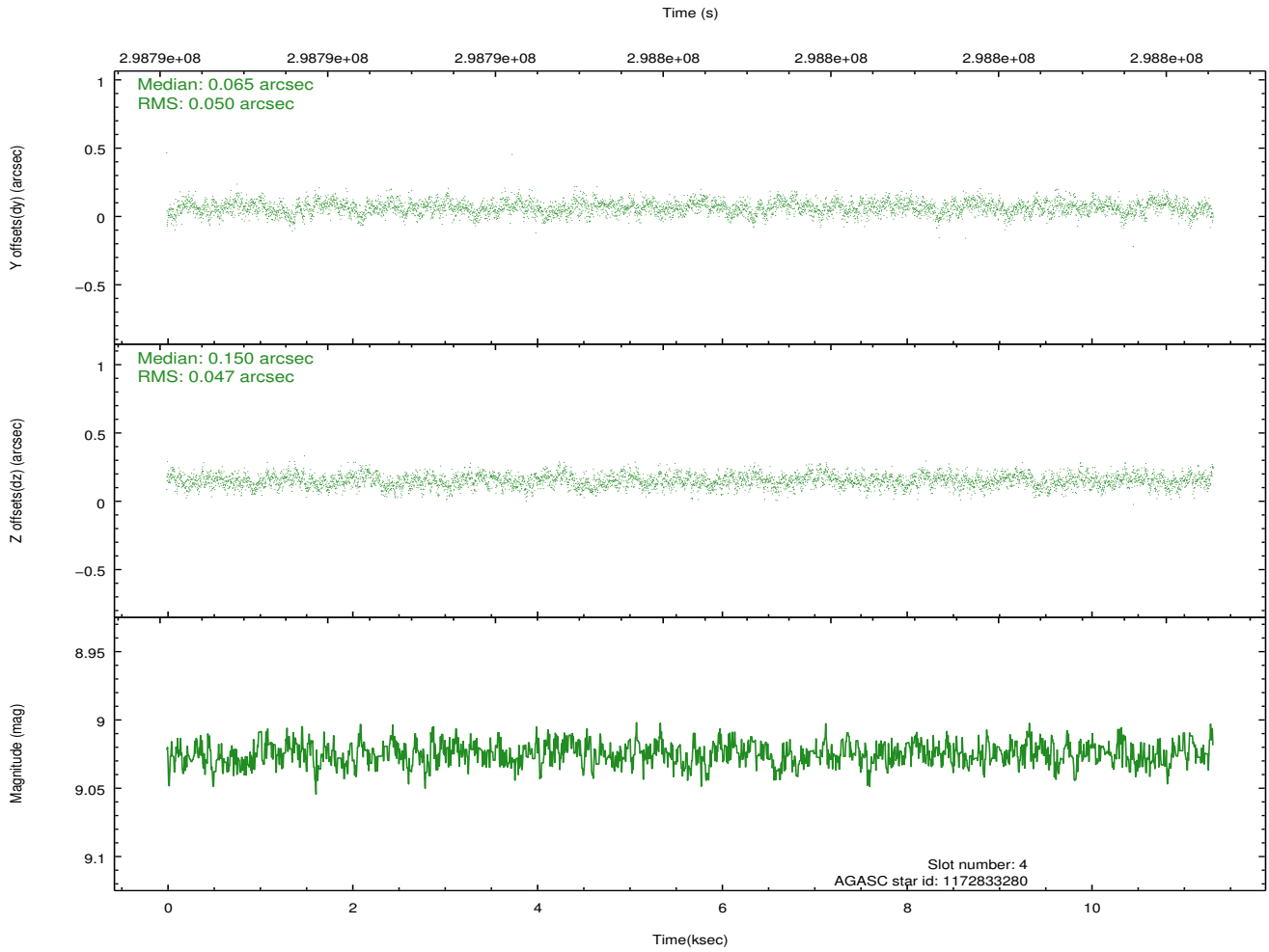
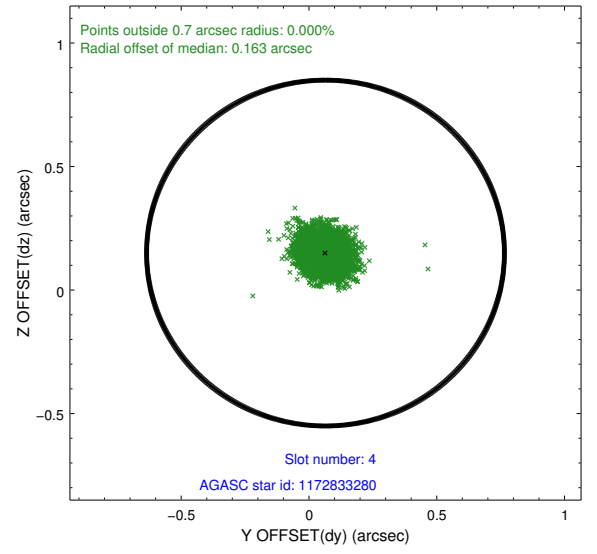
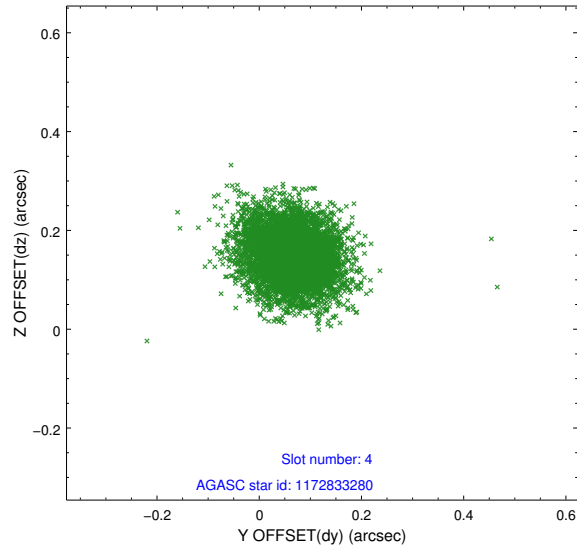
slot	status	id	mag	n_pts	med_dy	med_dz	dr1	dr2	ra	dec	mean_y	mean_z
0	FID	ACIS-I-1	7.23	2763	0.048	-0.032	0.008	0.014	0.000000	0.000000	925.30	-838.78
1	FID	ACIS-I-5	7.23	2763	-0.236	0.041	0.006	0.011	0.000000	0.000000	-1822.84	1058.56
2	FID	ACIS-I-6	7.24	2763	0.096	0.061	0.008	0.013	0.000000	0.000000	390.41	1703.59
3	GUIDE	1171148976	9.32	5514	0.104	-0.019	0.104	0.173	136.019328	-64.735751	1974.74	-2378.00
4	GUIDE	1172833280	9.02	5524	0.065	0.150	0.072	0.117	138.500210	-64.197191	-2155.73	-1147.99
5	GUIDE	1172833464	7.52	5526	-0.023	-0.074	0.061	0.111	137.532282	-65.489504	2140.45	1169.30
6	GUIDE	1172843336	6.88	5526	-0.096	-0.052	0.065	0.103	138.594730	-65.053954	-98.70	1155.17
7	GUIDE	1172838424	9.67	5515	-0.053	-0.005	0.093	0.149	137.580666	-65.505266	2127.74	1261.17

## 2.4 Star Slots

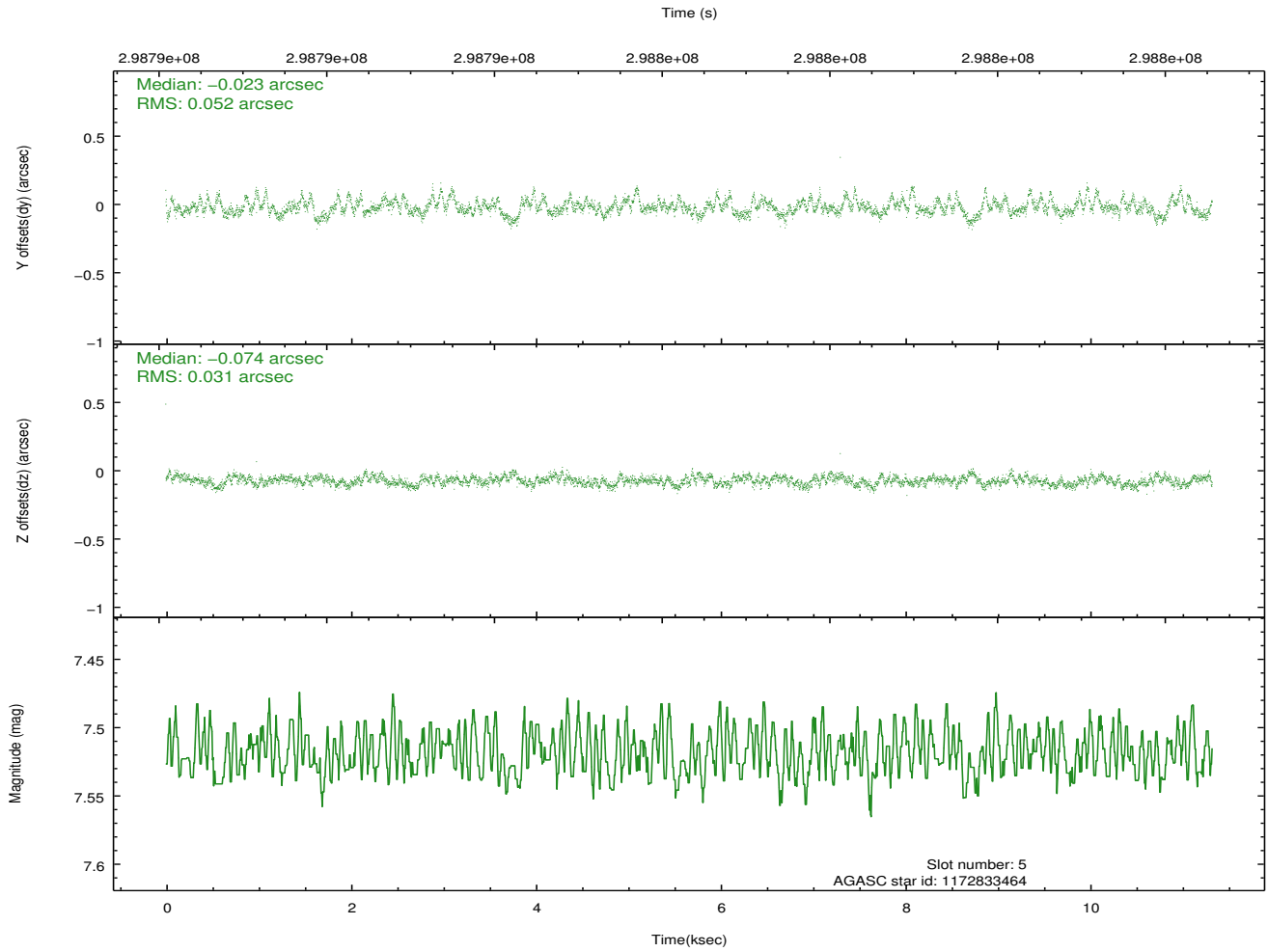
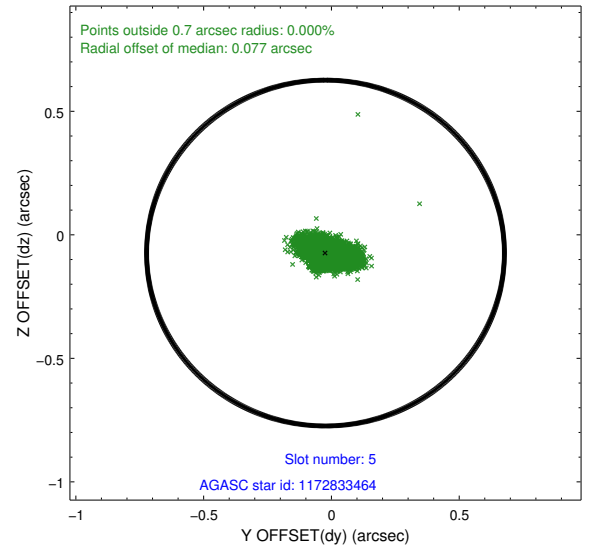
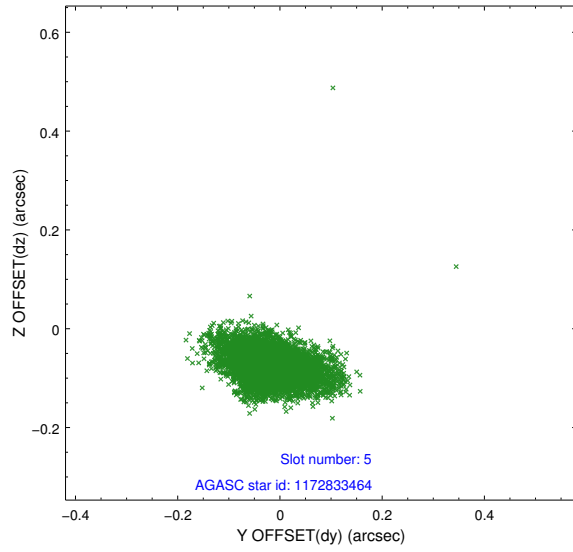
### 2.4.1 Slot 3



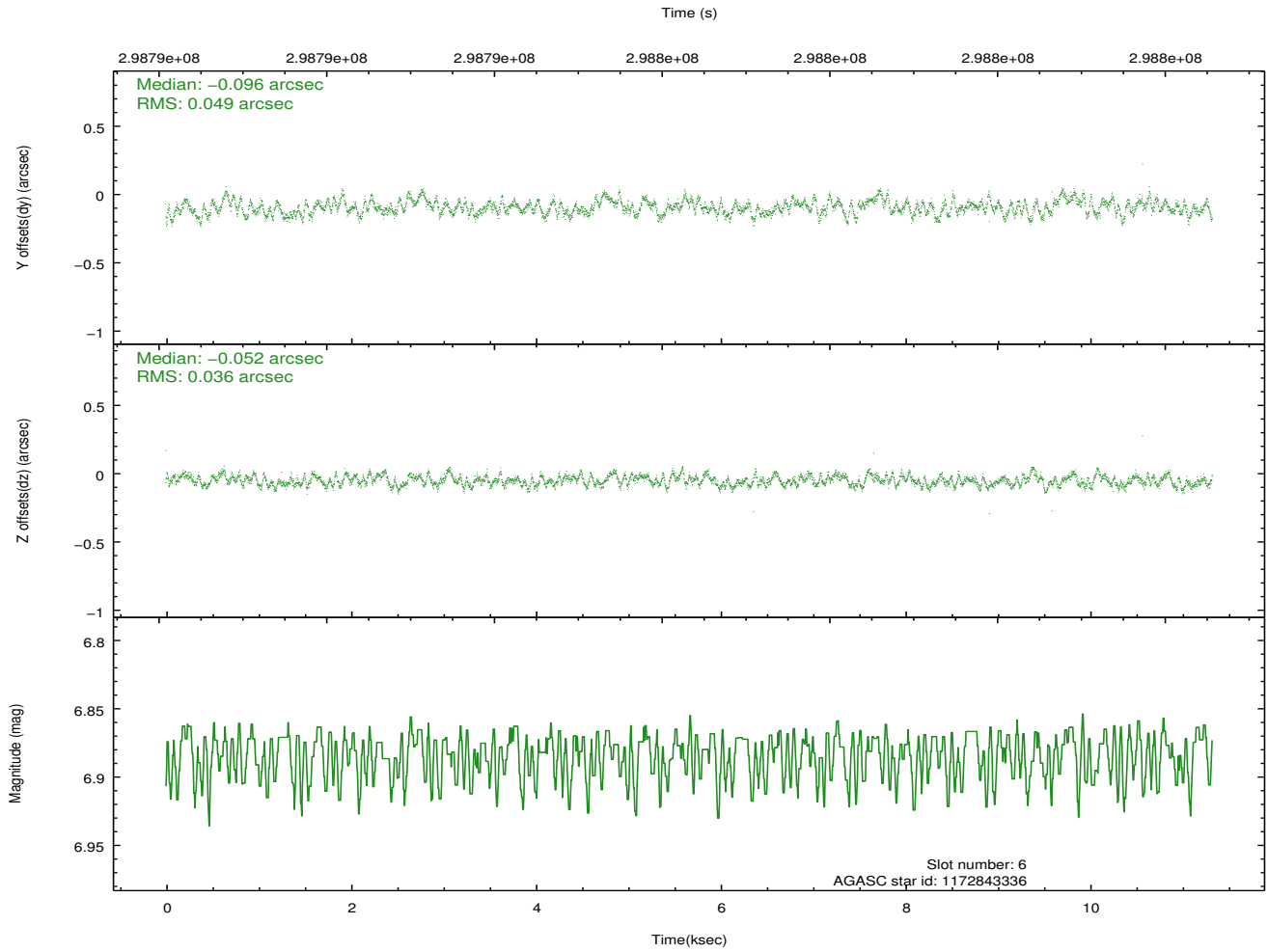
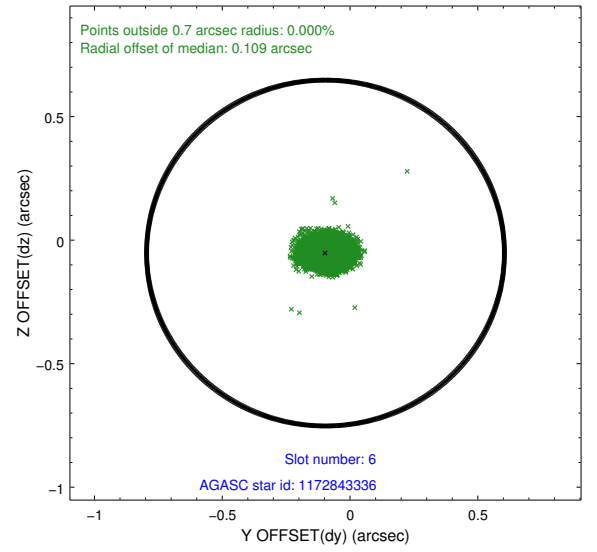
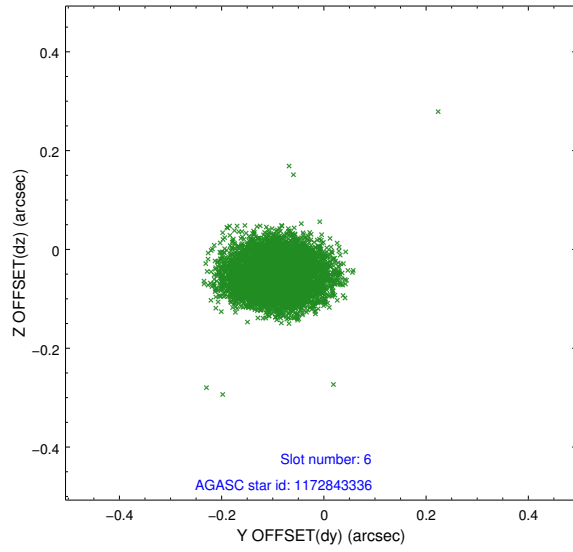
## 2.4.2 Slot 4



### 2.4.3 Slot 5

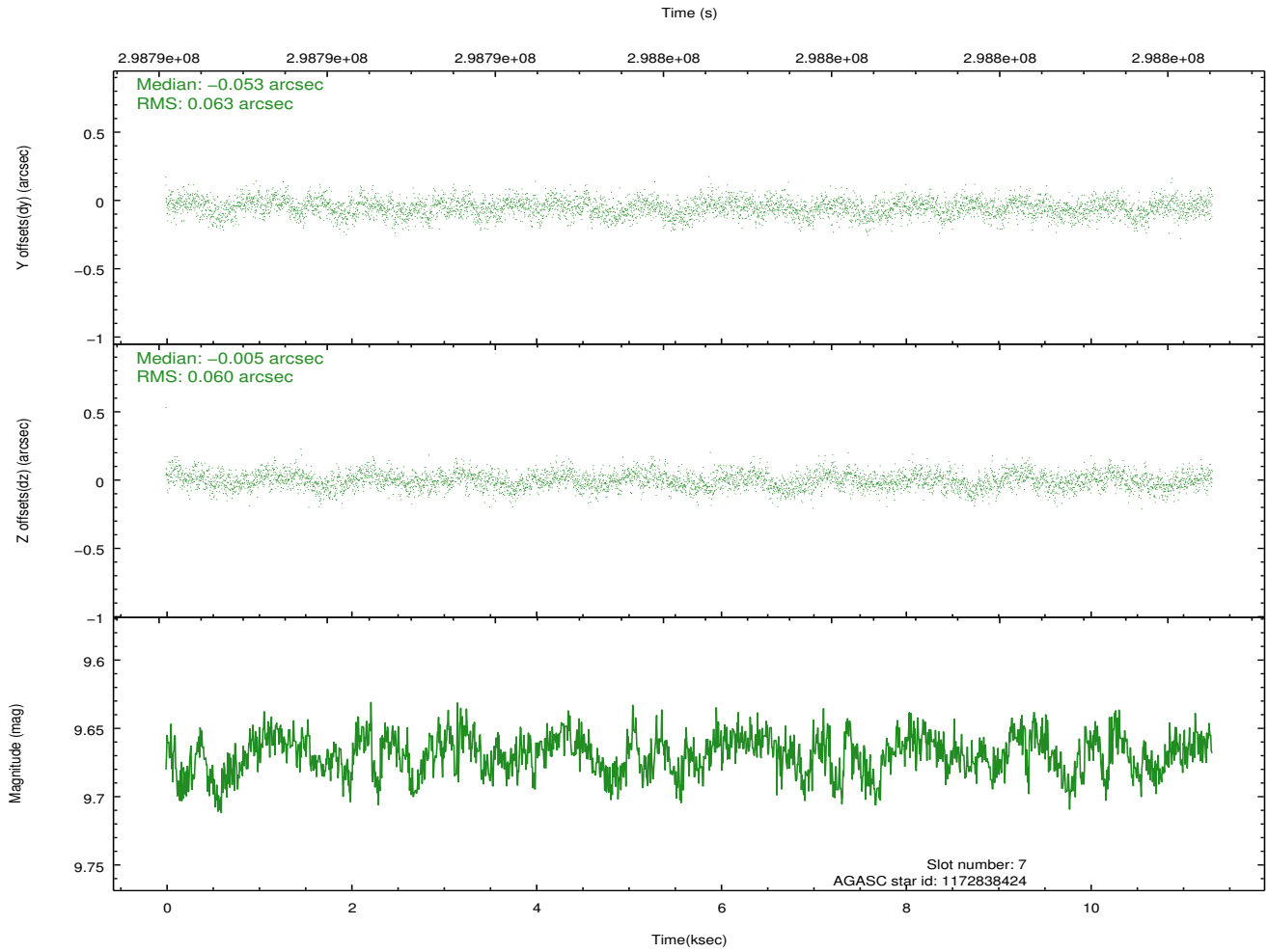
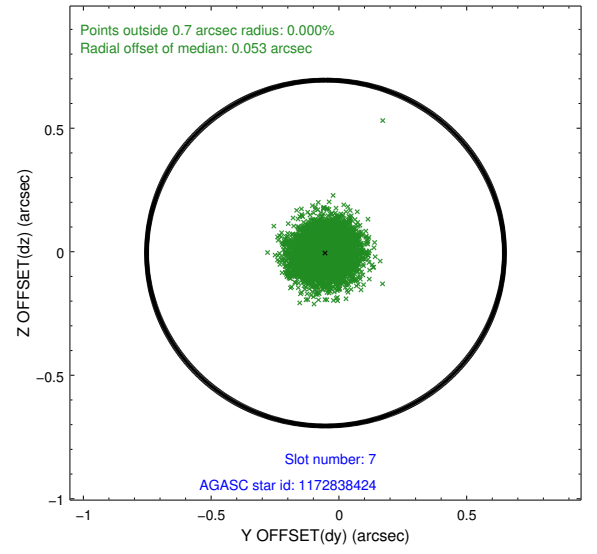
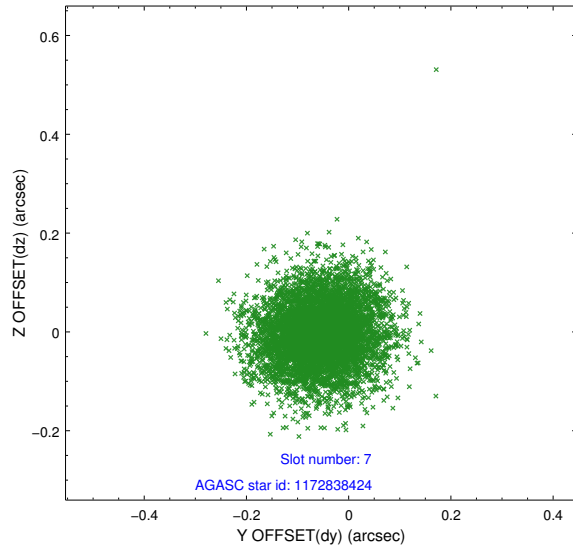


## 2.4.4 Slot 6



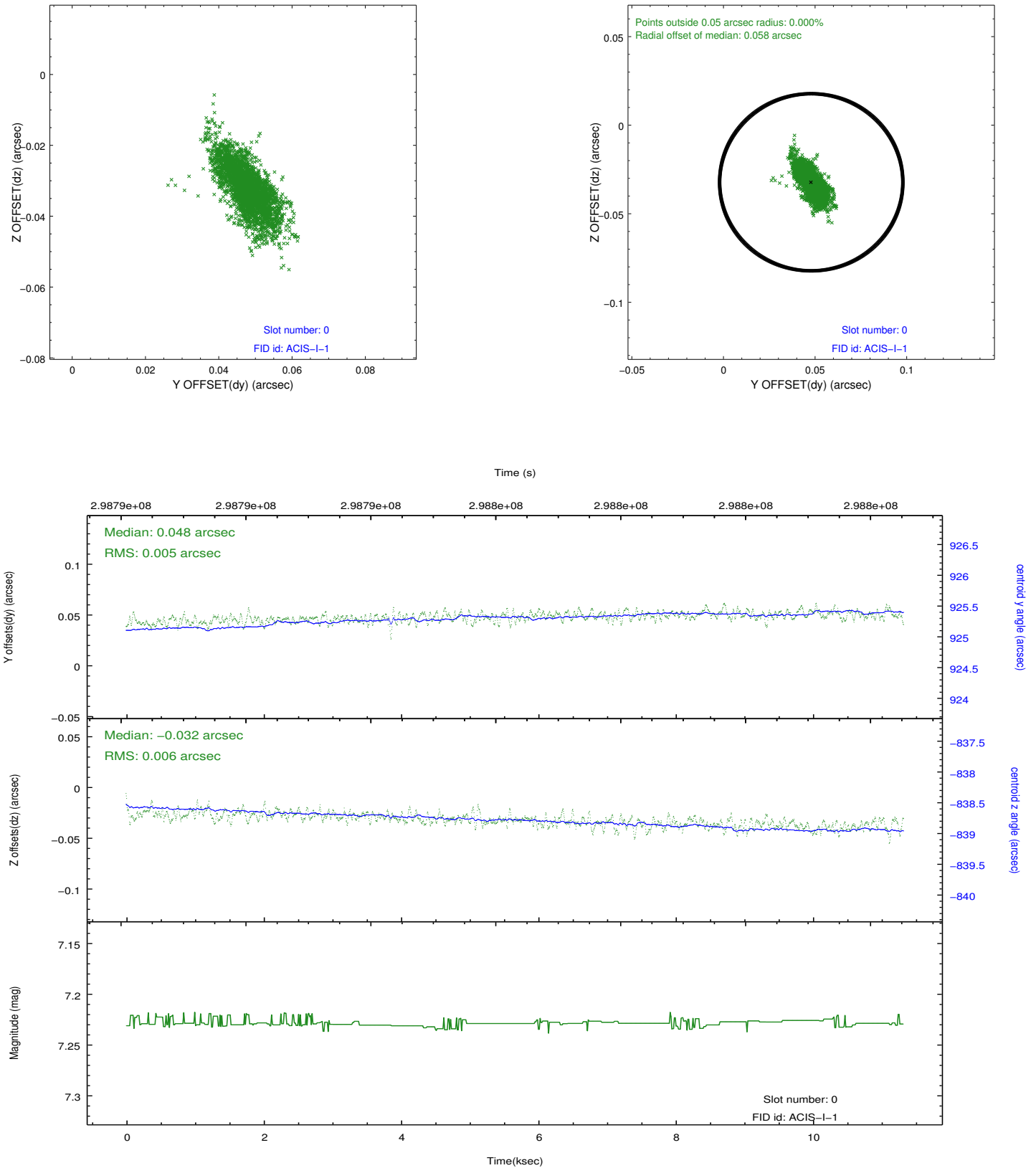


## 2.4.5 Slot 7

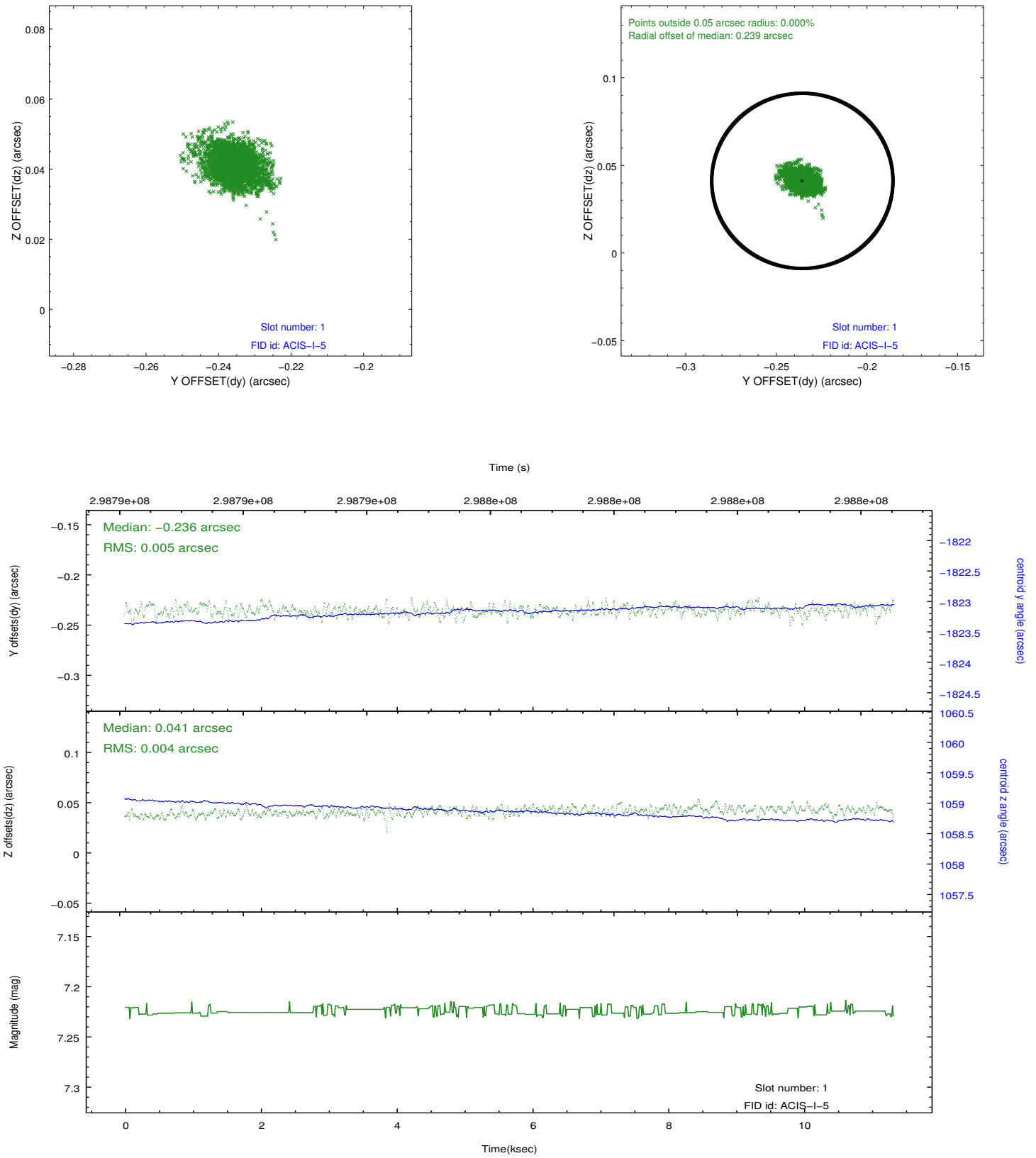


## 2.5 FID Slots

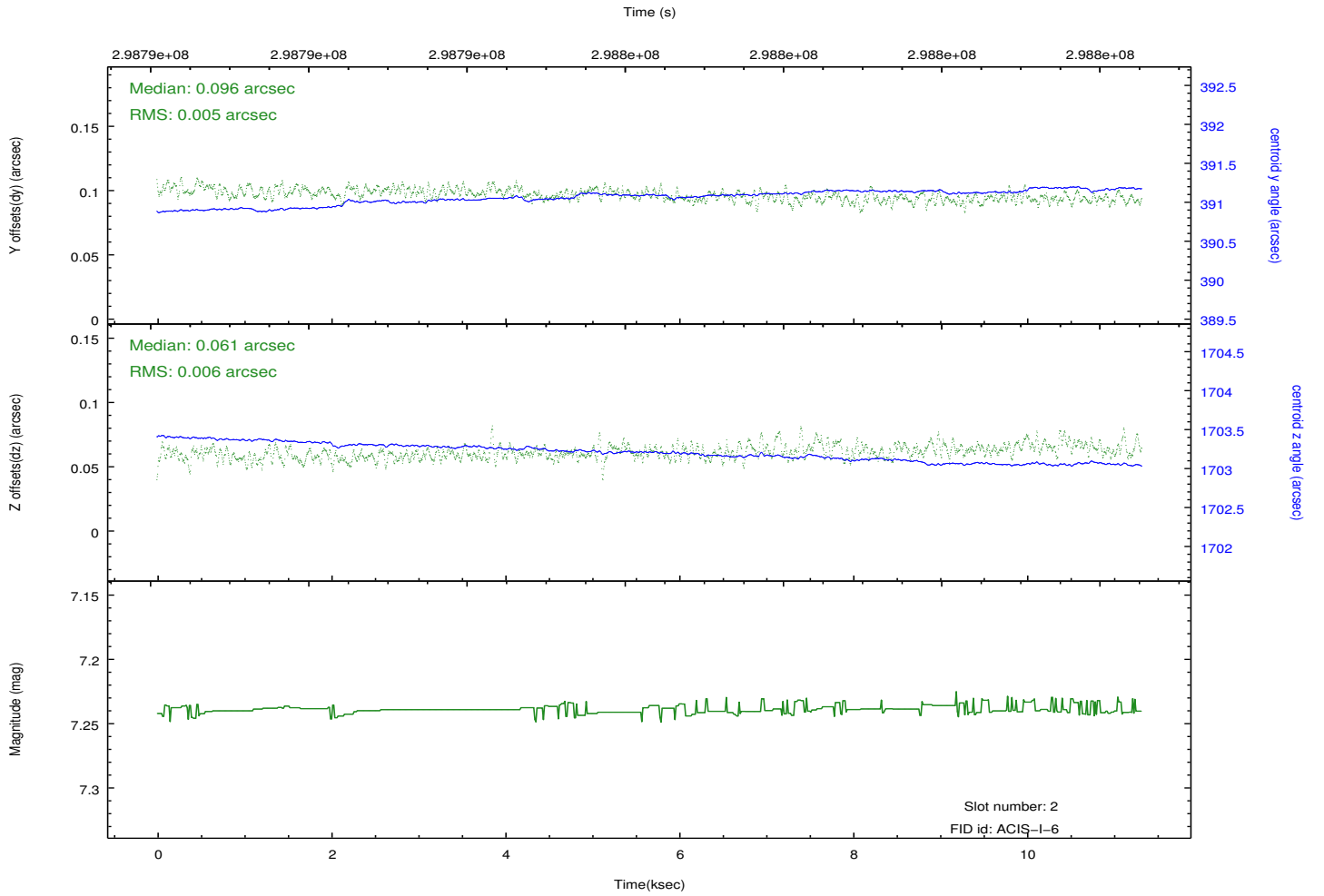
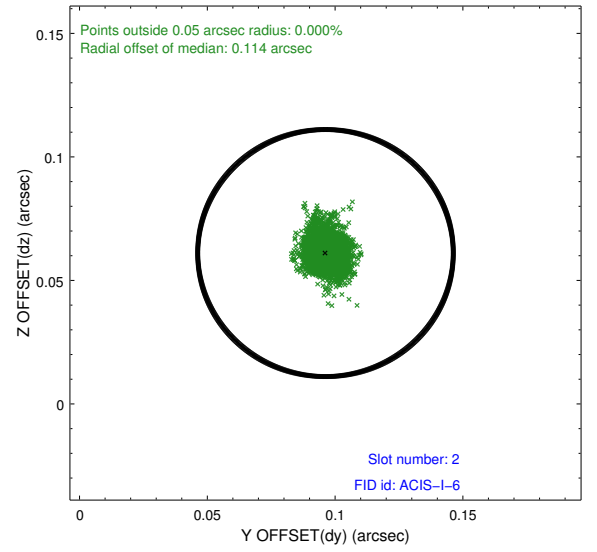
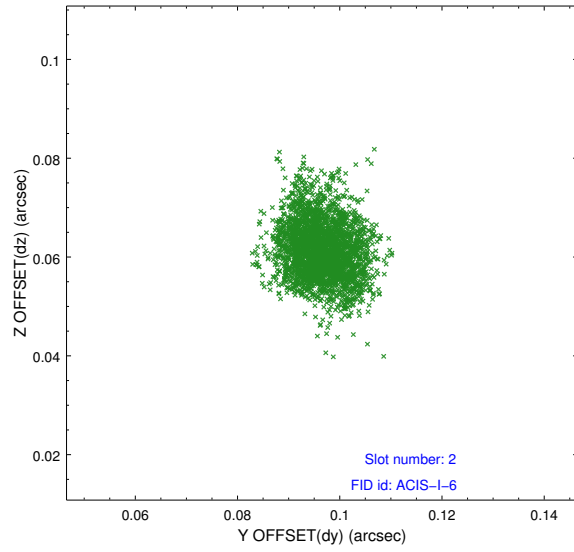
### 2.5.1 Slot 0



## 2.5.2 Slot 1



### 2.5.3 Slot 2



## A Summary

### A.1 Status

V&V Scientist	Jen Lauer
V&V Date (YYYY-MM-DD)	2012.04.27
V&V Edition	1
V&V Disposition and Status	OK
V&V Charge Time	10.9535999

### A.2 Comments