

V&V Reference Report

L2 ASCDS Version : 8.1.1

Observation 840 - L2 Version 4

Chandra X-Ray Center

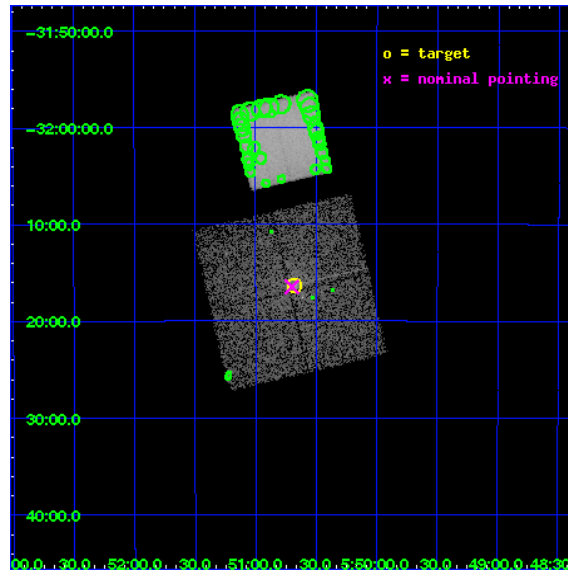
L2 Processing Date : Nov 29 2009

Contents

1	Front	2
2	OBI	3
2.1	OBI	3
2.1.1	Images	3
2.1.2	Bias	3
2.1.3	Parameters	4
2.1.4	Events	4
2.2	Compared Parameters	5
2.3	Aspect	6
2.4	Star Slots	9
2.4.1	Slot 3	9
2.4.2	Slot 4	10
2.4.3	Slot 5	11
2.4.4	Slot 6	12
2.4.5	Slot 7	13
2.5	FID Slots	14
2.5.1	Slot 0	14
2.5.2	Slot 1	15
2.5.3	Slot 2	16
3	Point Sources	17
A	Summary	18
A.1	Status	18
A.2	Comments	18

1 Front

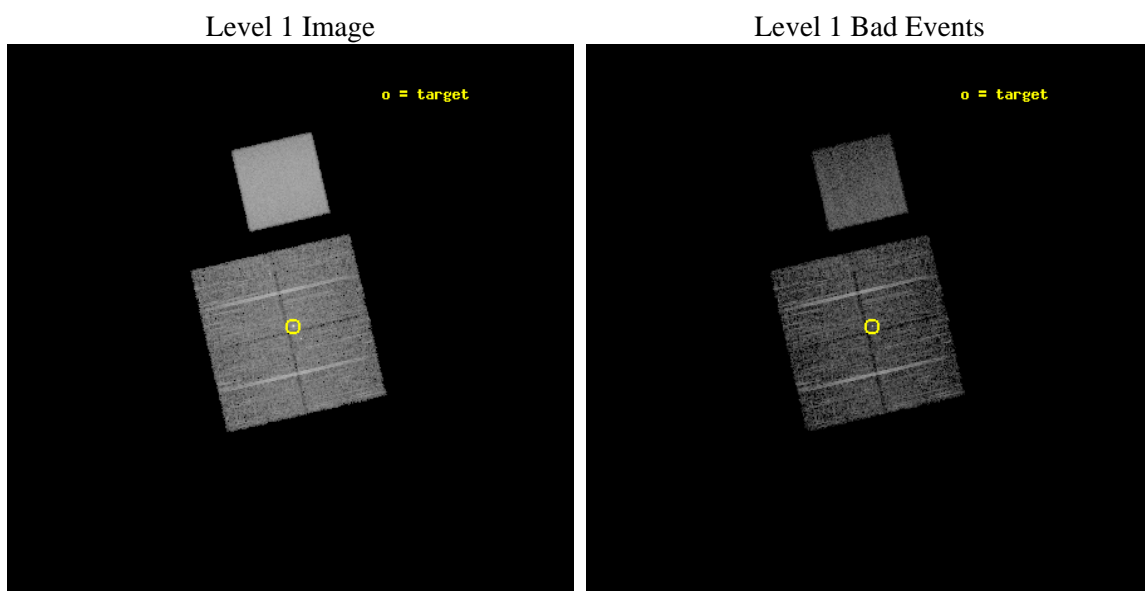
seq_num	700145	Sequence number
obs_id	840	Observation id
title	THE X-RAY CLUSTER ENVIRONMENT OF BLAZARS	Proposal title
observer	Dr. Joseph Pesce	Principal investigator
object	PKS 0548-322	Source name
dtcycle	0	
cycle	P	events from which exps? Prim/Second/Both
ra_targ	87.67	Observer's specified target RA
dec_targ	-32.271611	Observer's specified target Dec
ra_nom	87.67507517565	Nominal RA
dec_nom	-32.274684434731	Nominal Dec
roll_nom	346.97199328791	Nominal Roll
revision	4	Processing version of data
ontime	4609.7175301835	Sum of GTIs [s]
livetime	4551.3465111777	Livetime [s]
ontime0	4613.0820692182	Sum of GTIs [s]
ontime1	4642.2101199776	Sum of GTIs [s]
ontime2	4544.9389669299	Sum of GTIs [s]
ontime3	4609.7175301835	Sum of GTIs [s]
ontime7	5076.5823651329	Sum of GTIs [s]
l2events	121770	Number of level 2 events



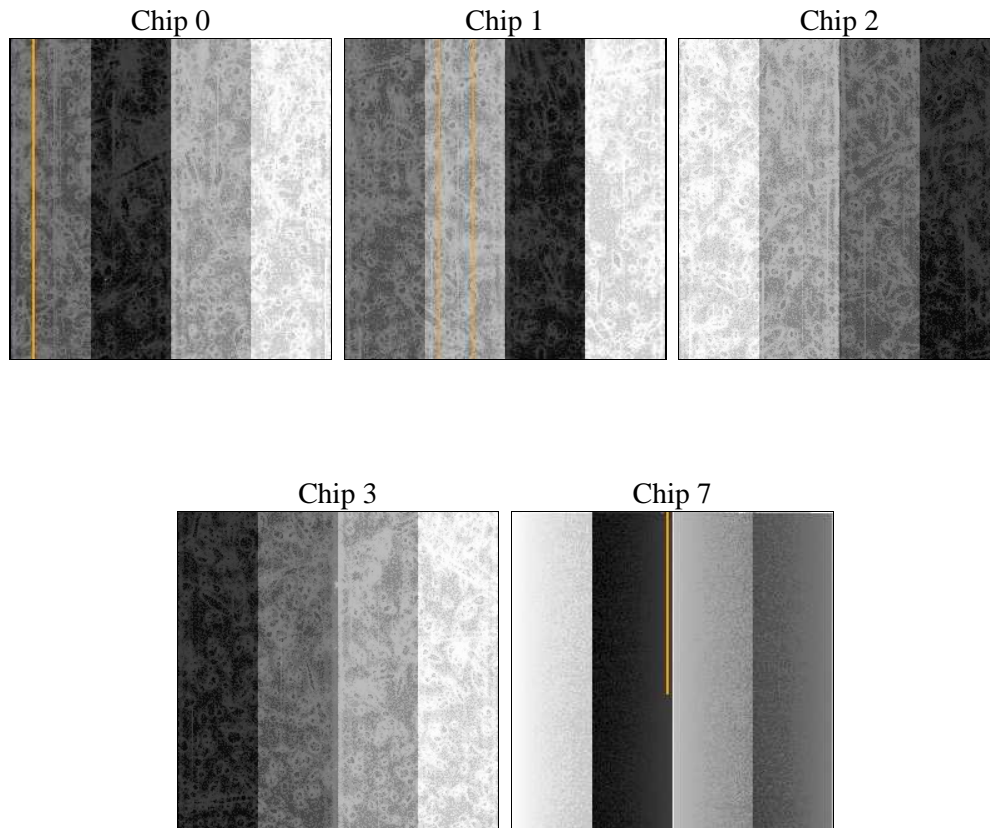
2 OBI

2.1 OBI

2.1.1 Images



2.1.2 Bias



2.1.3 Parameters

obi_num	0	Obi number	sched_exp_time	6000.000000	Scheduled observation exposure time
ascdsver	8.1.1	ASCDS version number	ontime	4609.7175301835	Sum of GTIs [s]
caldsver	4.1.4	 	ontime0	4613.0820692182	Sum of GTIs [s]
date	2009-11-29T20:42:23	Date and time of file creation	ontime1	4642.2101199776	Sum of GTIs [s]
revision	3	Processing version of data	ontime2	4544.9389669299	Sum of GTIs [s]
			ontime3	4609.7175301835	Sum of GTIs [s]
			ontime7	5076.5823651329	Sum of GTIs [s]
			l1events	303815	Number of level 1 events

2.1.4 Events

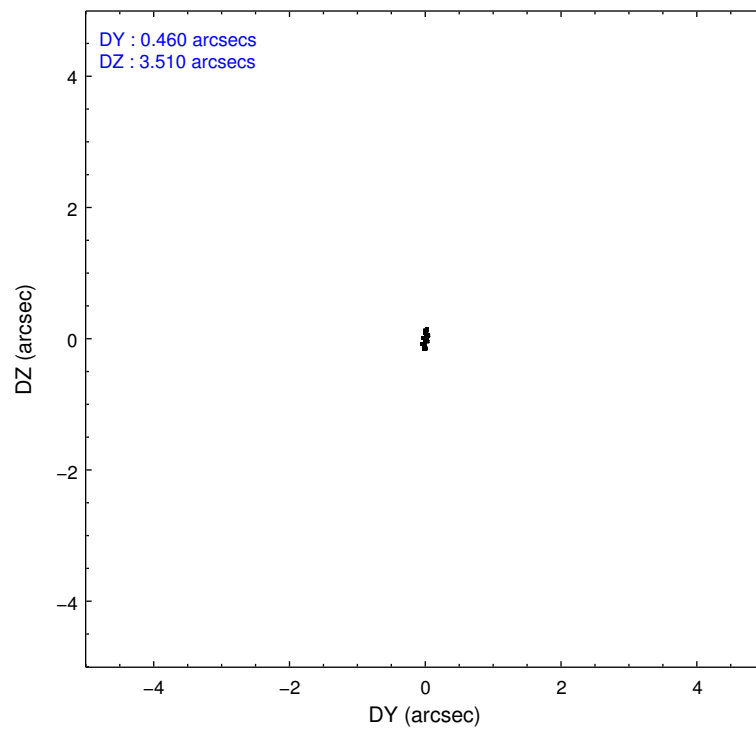
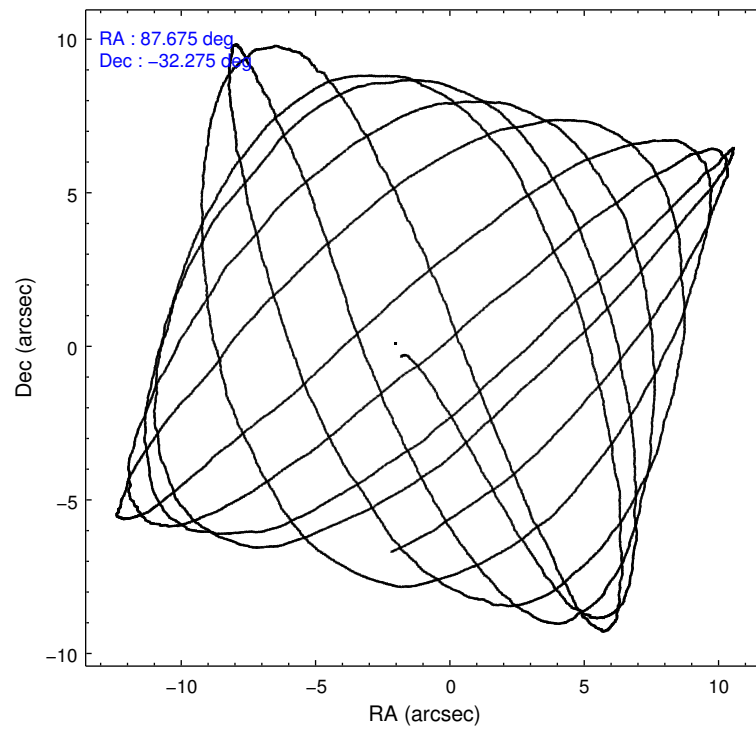
	ccd 0	ccd 1	ccd 2	ccd 3	ccd 7
level 1 events	39842	39181	43669	41861	139262
rejected events	33723	32785	37961	34567	40258
rejected %	84%	83%	86%	82%	28%

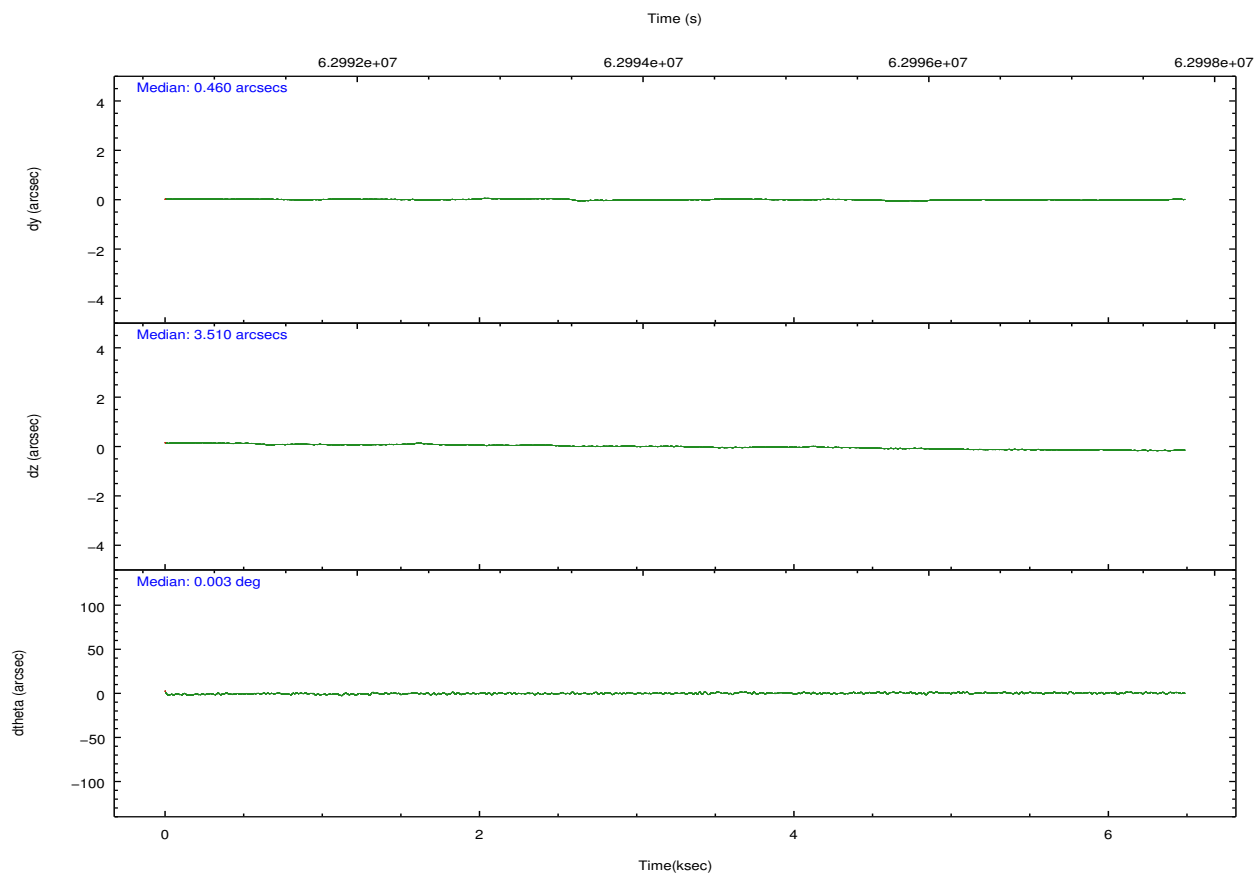
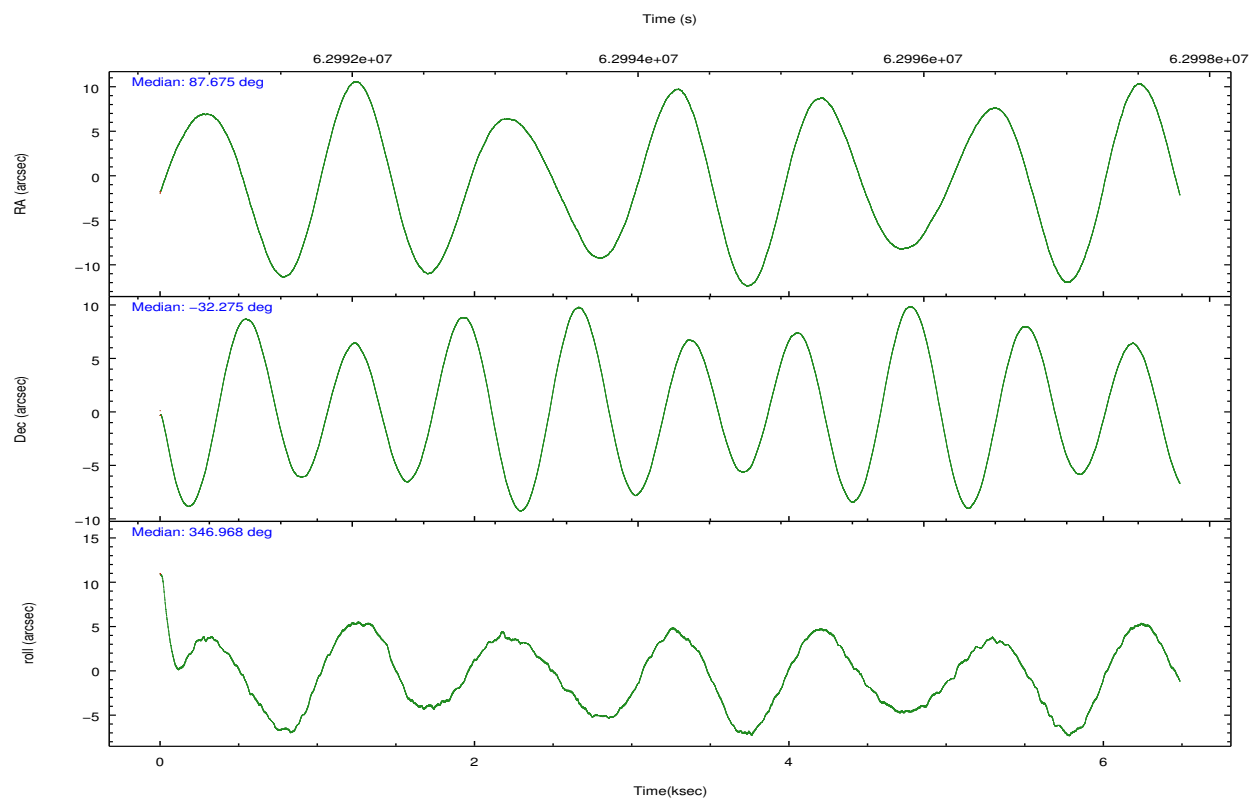
	ccd 0	ccd 1	ccd 2	ccd 3	ccd 7
grade 0 events	1888	2073	1682	2315	9811
	4%	5%	3%	5%	7%
grade 1 events	12	15	10	52	43
	0%	0%	0%	0%	0%
grade 2 events	2653	2678	2659	3300	18259
	6%	6%	6%	7%	13%
grade 3 events	326	301	221	298	6321
	0%	0%	0%	0%	4%
grade 4 events	295	319	223	285	5865
	0%	0%	0%	0%	4%
grade 5 events	802	868	712	805	3469
	2%	2%	1%	1%	2%
grade 6 events	958	1033	930	1103	58788
	2%	2%	2%	2%	42%
grade 7 events	32908	31894	37232	33703	36706
	82%	81%	85%	80%	26%

2.2 Compared Parameters

Parameter	Planned	Actual	Parameter	Planned	Actual
Instrument	ACIS	ACIS	Obspar format version number	6	6
Detector	ACIS-01237	ACIS-01237	Obspar file type	PREDICTED	ACTUAL
Grating	NONE	NONE	Obspar update status	NONE	UPDATED
Data mode	VFAINT	VFAINT	Number of optional ACIS chips dropped	0	0
Observation mode	POINTING	POINTING	On-chip summing requested	N	N
Pointing RA	87.643498	87.67507517564985	Subarray requested	NONE	NONE
Pointing Dec	-32.282434	-32.27468443473099	Alternating exposures requested	N	N
Pointing Roll	346.746416	346.9719932879103	Primary exposure time	0.000000	3.2
SIM focus pos (mm)	-0.782348	-0.7809083437167272			
SIM defocus (mm)	0	0.001439871863259334			
SIM translation stage pos (mm)	-233.592463	-233.5874344608287			
SIM translation stage offset (mm)	0	-0.005018542100998502			
Observation start time	62991468.184000	62990213.157422			
Observation start date	1999-12-31T01:36:44	1999-12-31T01:16:53			
Observation end time	62997468.184000	62997759.720196			
Observation end date	1999-12-31T03:16:44	1999-12-31T03:22:39			
Read mode	TIMED	TIMED			

2.3 Aspect



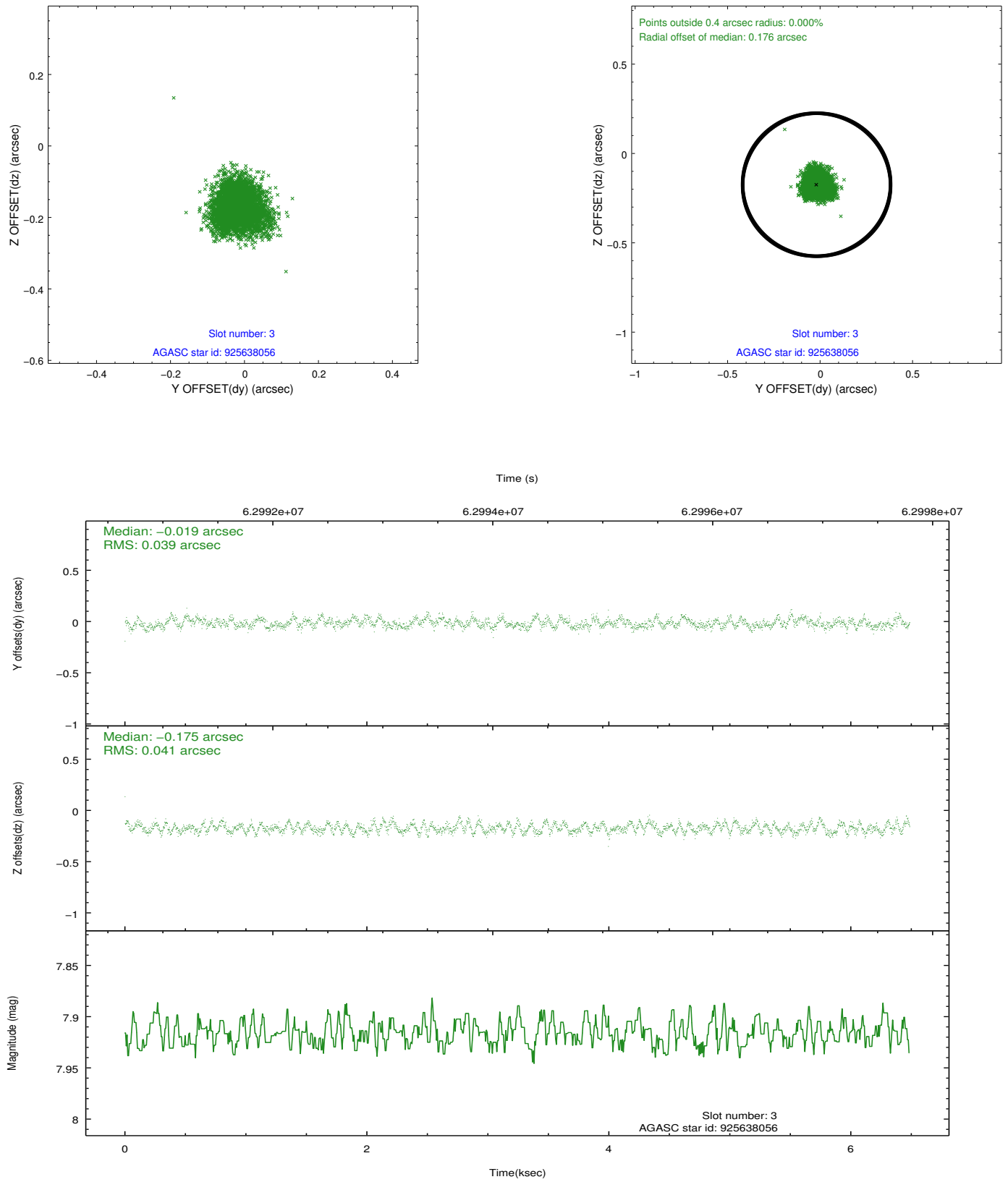


Slot Statistics

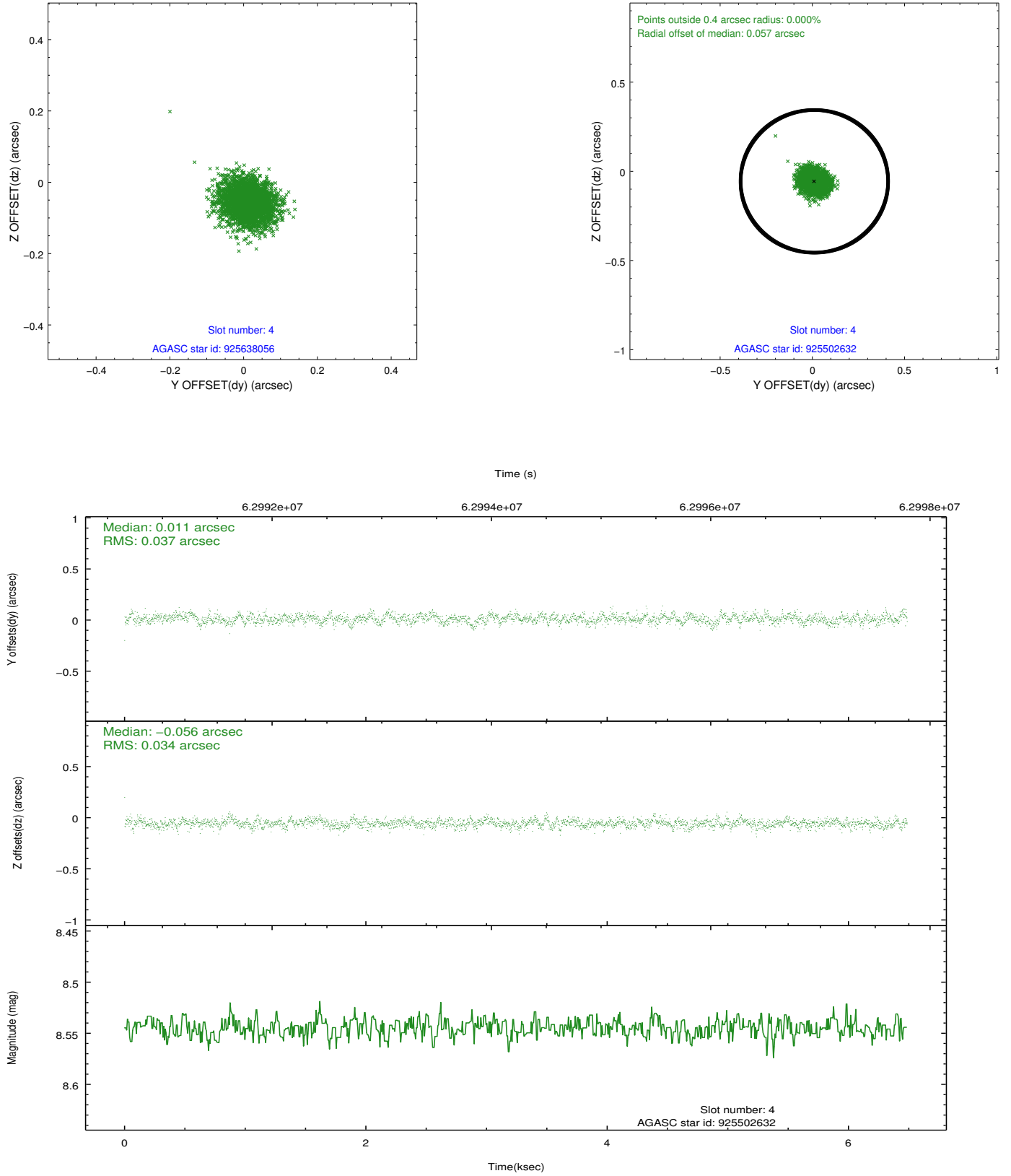
slot	status	id	mag	n_pts	med_dy	med_dz	dr1	dr2	ra	dec	mean_y	mean_z
0	FID	ACIS-I-2	7.19	3165	-0.009	0.089	0.009	0.015	0.000000	0.000000	-754.86	-833.00
1	FID	ACIS-I-4	7.26	3165	0.051	-0.008	0.006	0.010	0.000000	0.000000	2159.27	1072.61
2	FID	ACIS-I-5	7.23	3165	-0.143	-0.012	0.009	0.014	0.000000	0.000000	-1808.16	1071.26
3	GUIDE	925638056	7.92	3165	-0.019	-0.175	0.061	0.095	87.820659	-32.298988	538.10	65.07
4	GUIDE	925502632	8.54	3163	0.011	-0.056	0.053	0.089	87.276261	-32.031721	-1297.67	619.62
5	GUIDE	925637656	9.19	3159	-0.109	0.042	0.081	0.132	87.947352	-32.914104	1414.81	-2003.81
6	GUIDE	924977296	9.42	3161	0.101	-0.004	0.103	0.171	87.177266	-31.619670	-1937.58	1991.03
7	GUIDE	925637392	9.93	3164	0.018	0.188	0.103	0.167	88.259859	-32.421247	1937.97	-61.24

2.4 Star Slots

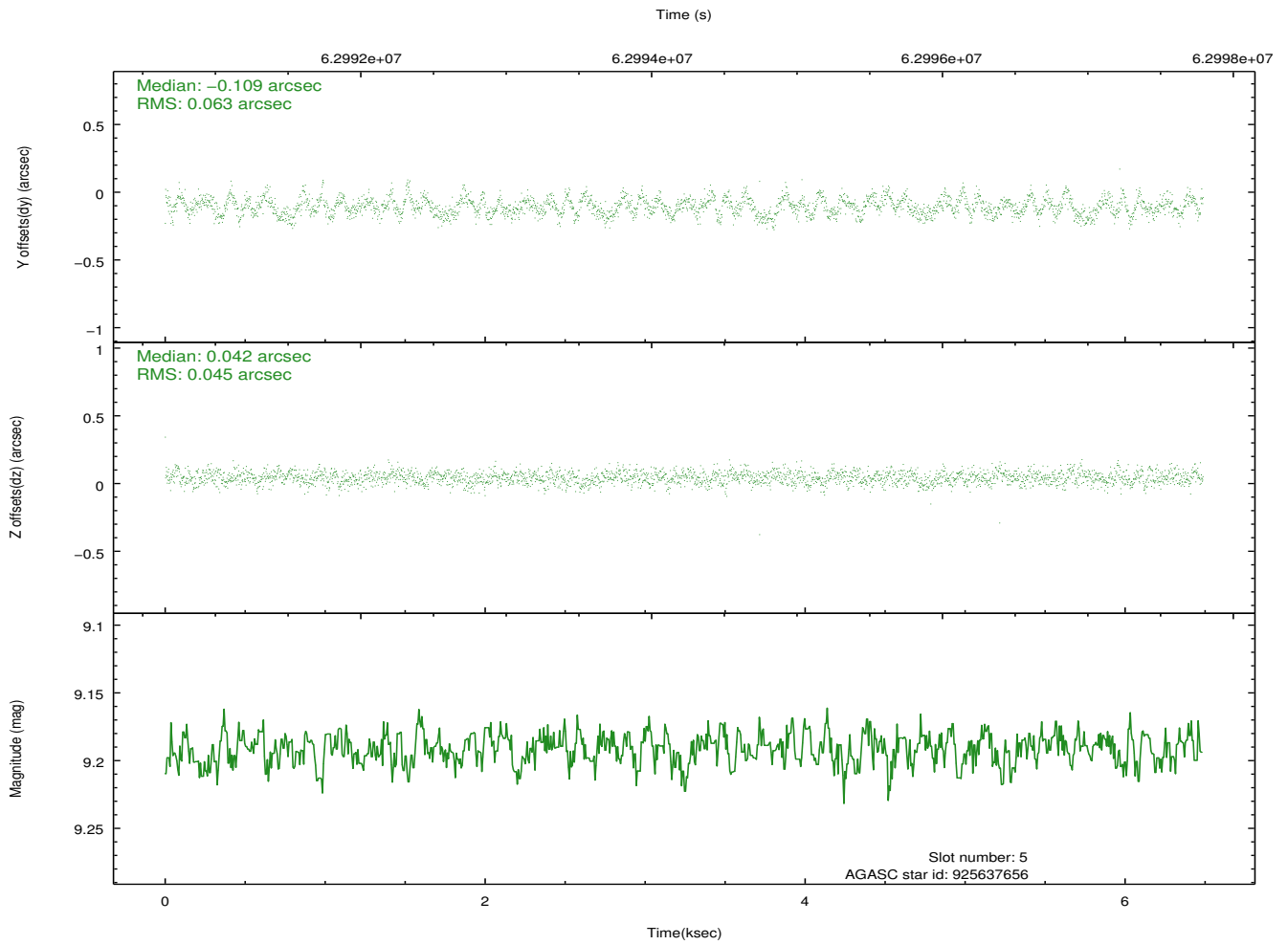
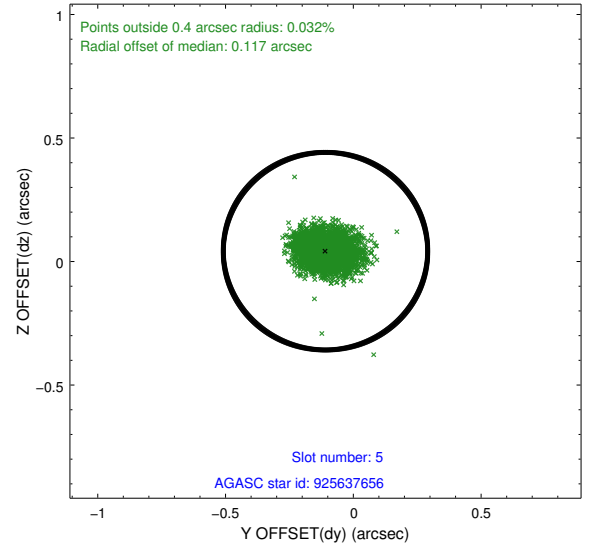
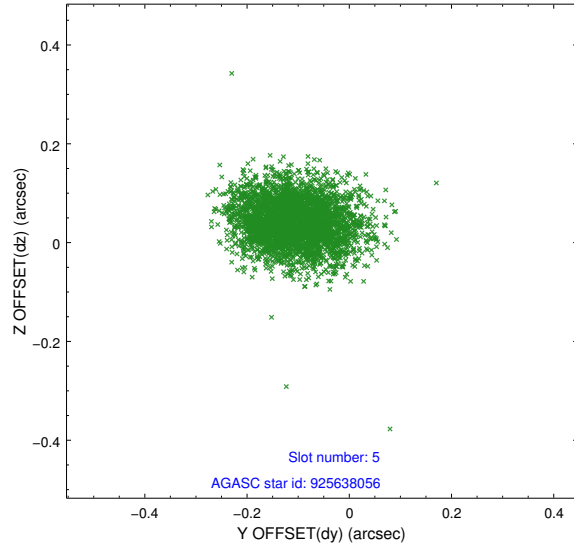
2.4.1 Slot 3



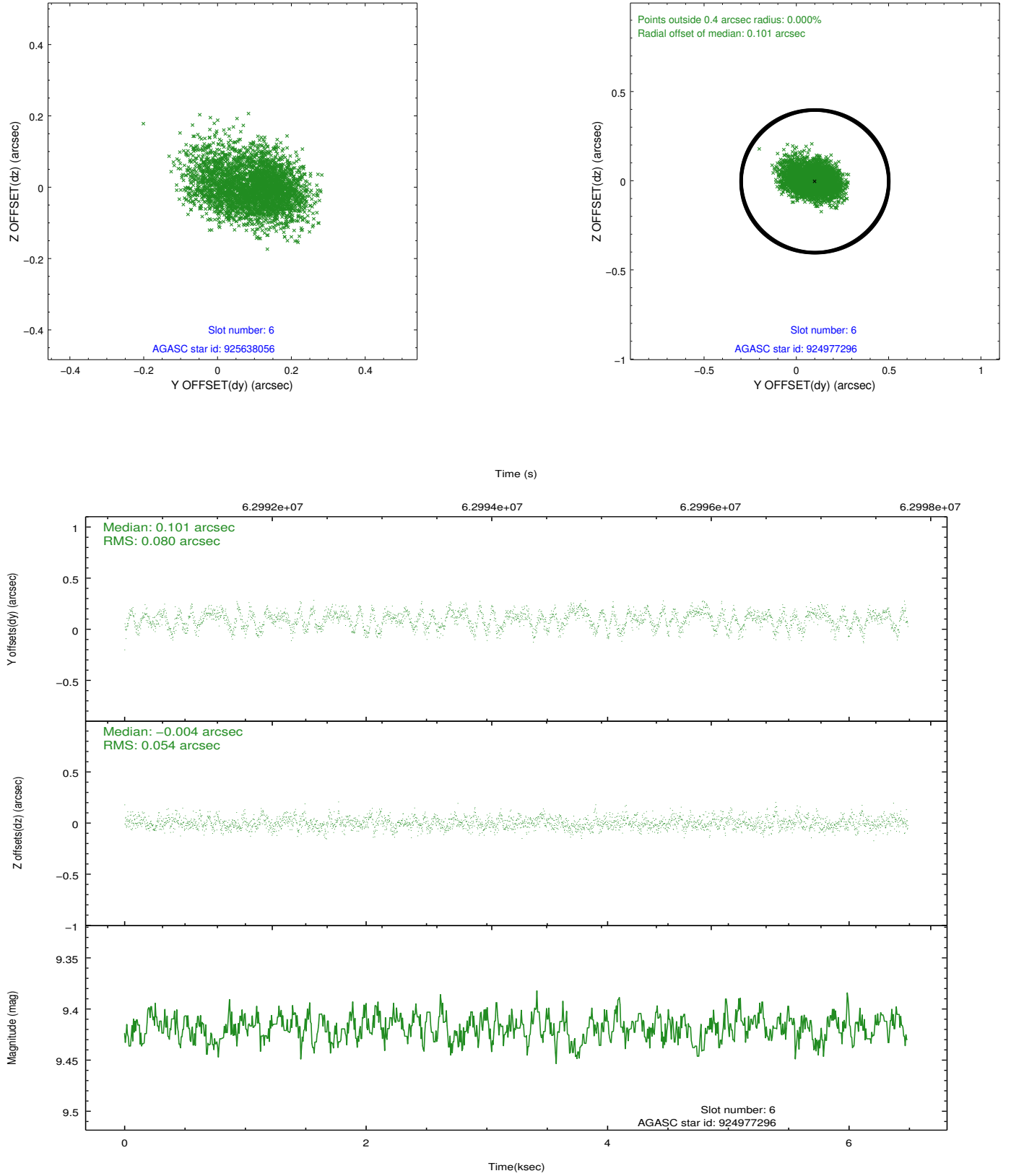
2.4.2 Slot 4



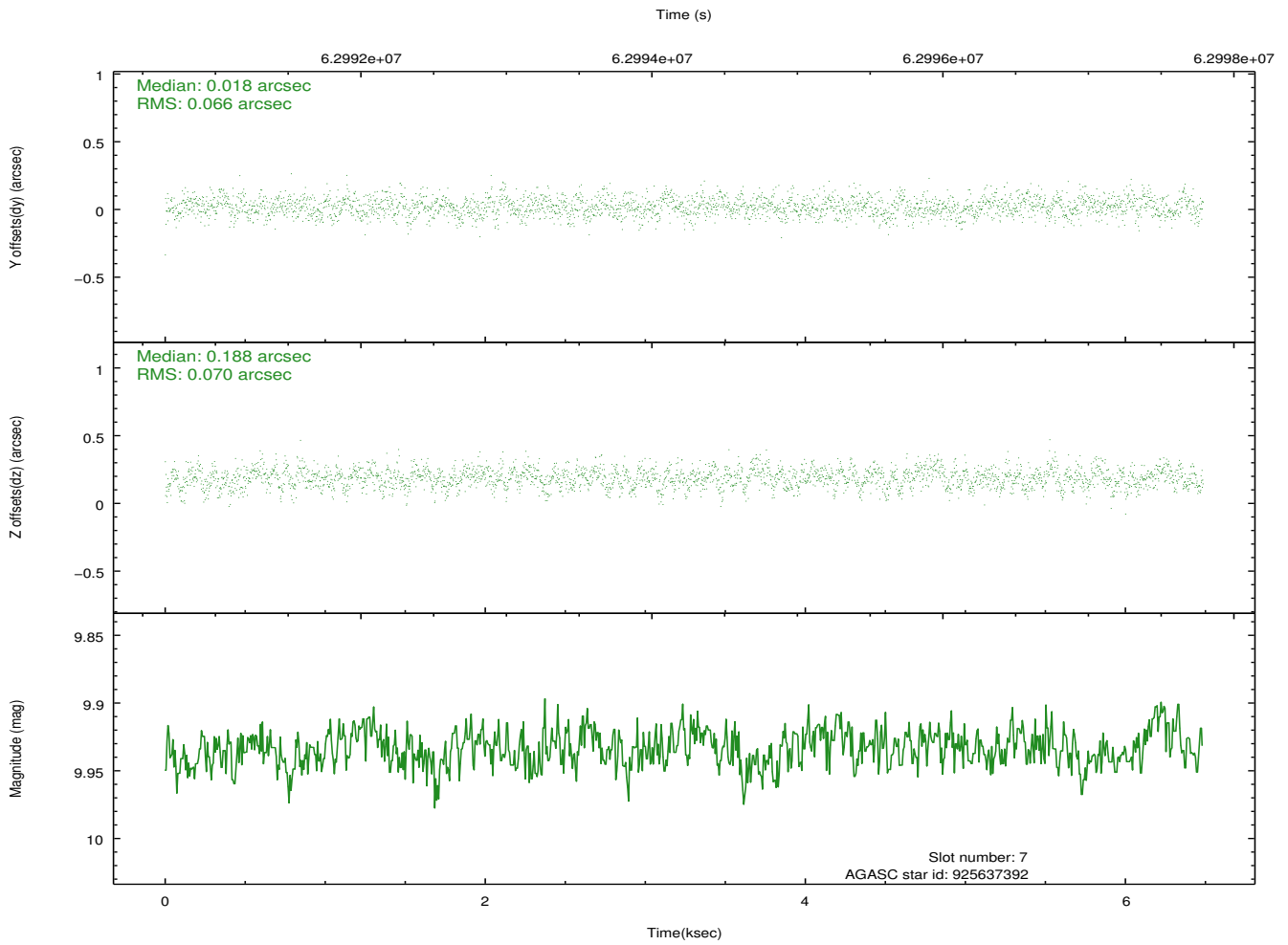
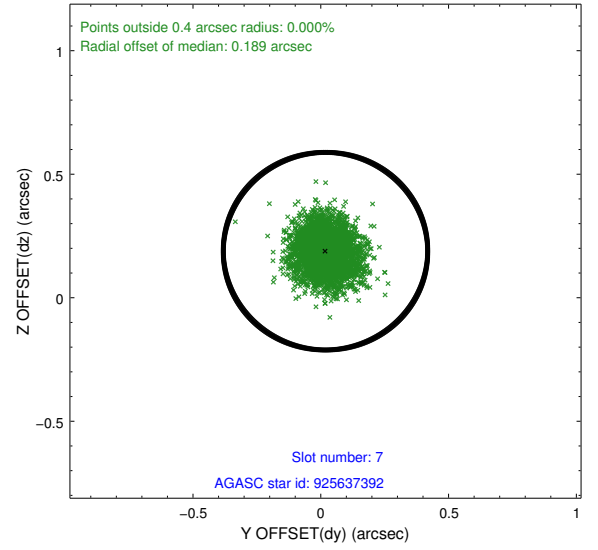
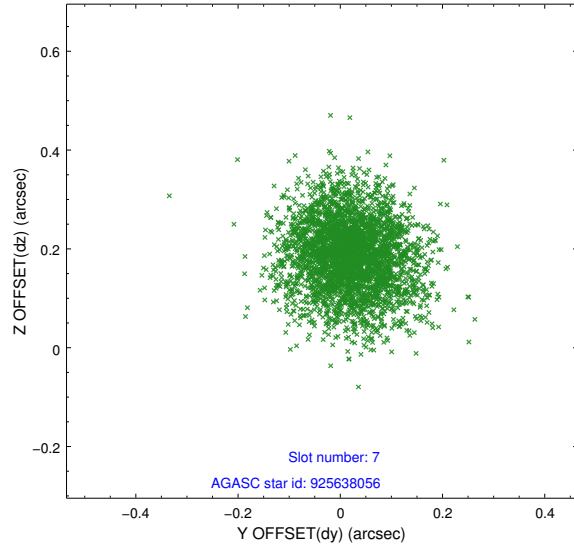
2.4.3 Slot 5



2.4.4 Slot 6

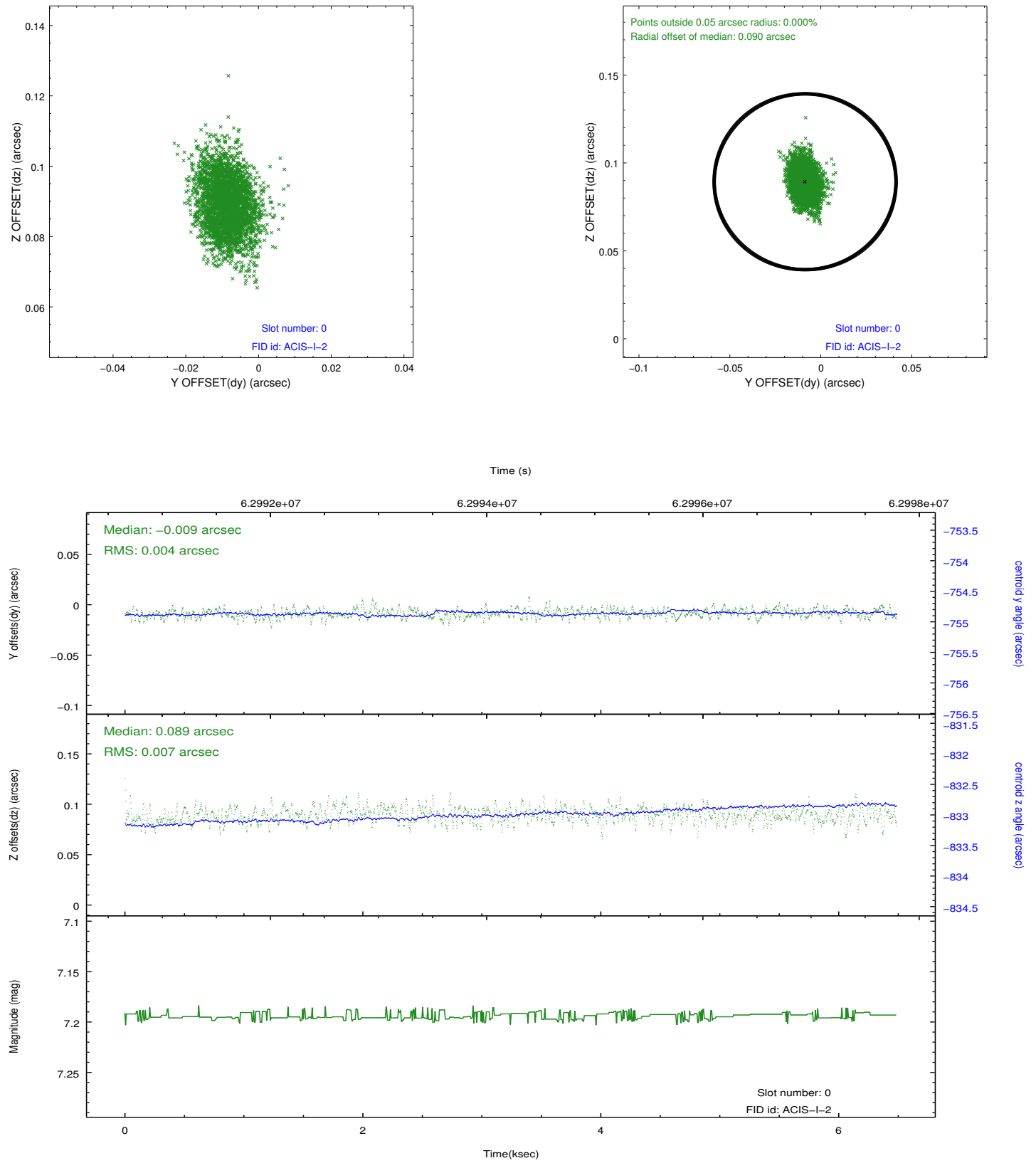


2.4.5 Slot 7

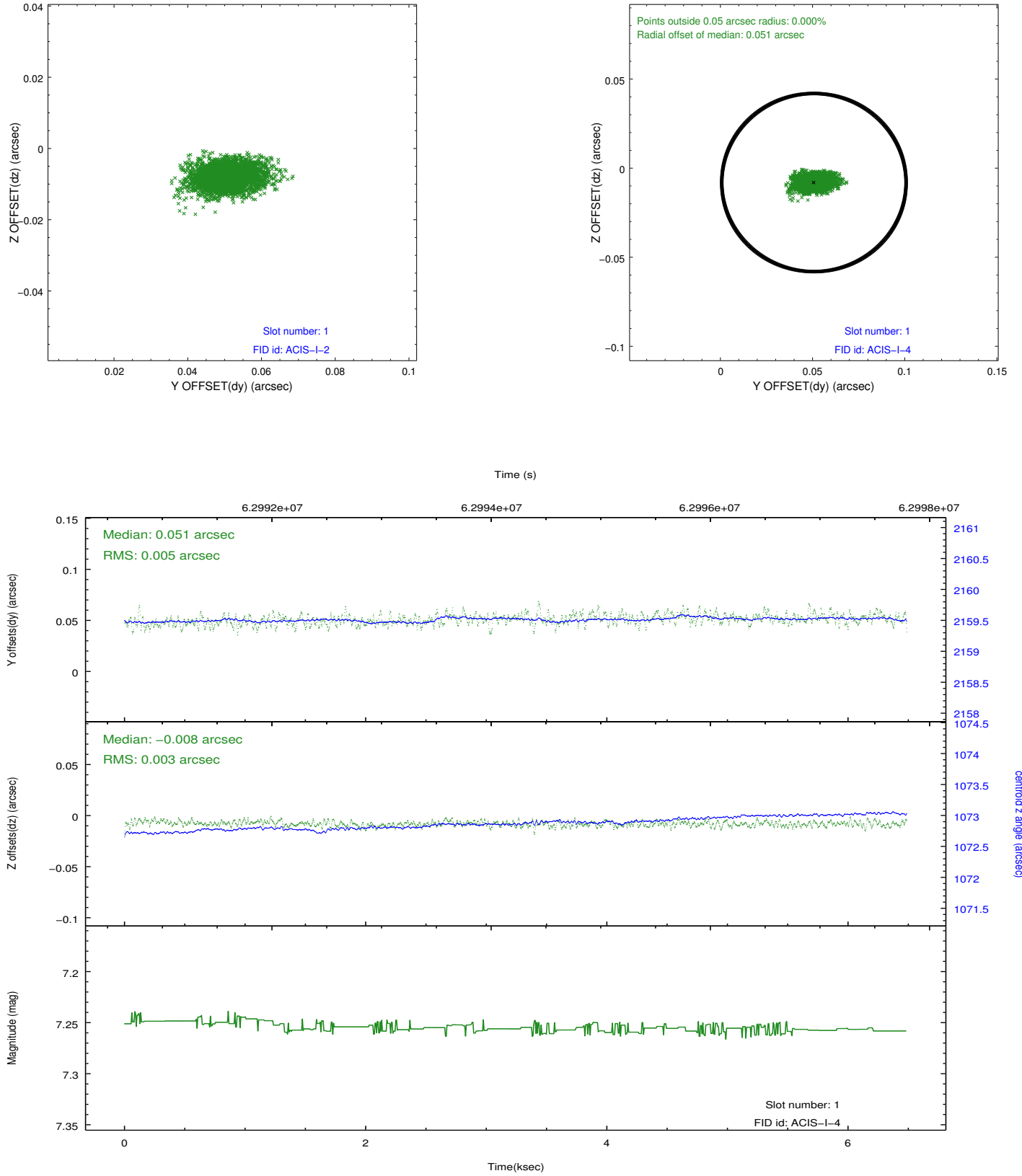


2.5 FID Slots

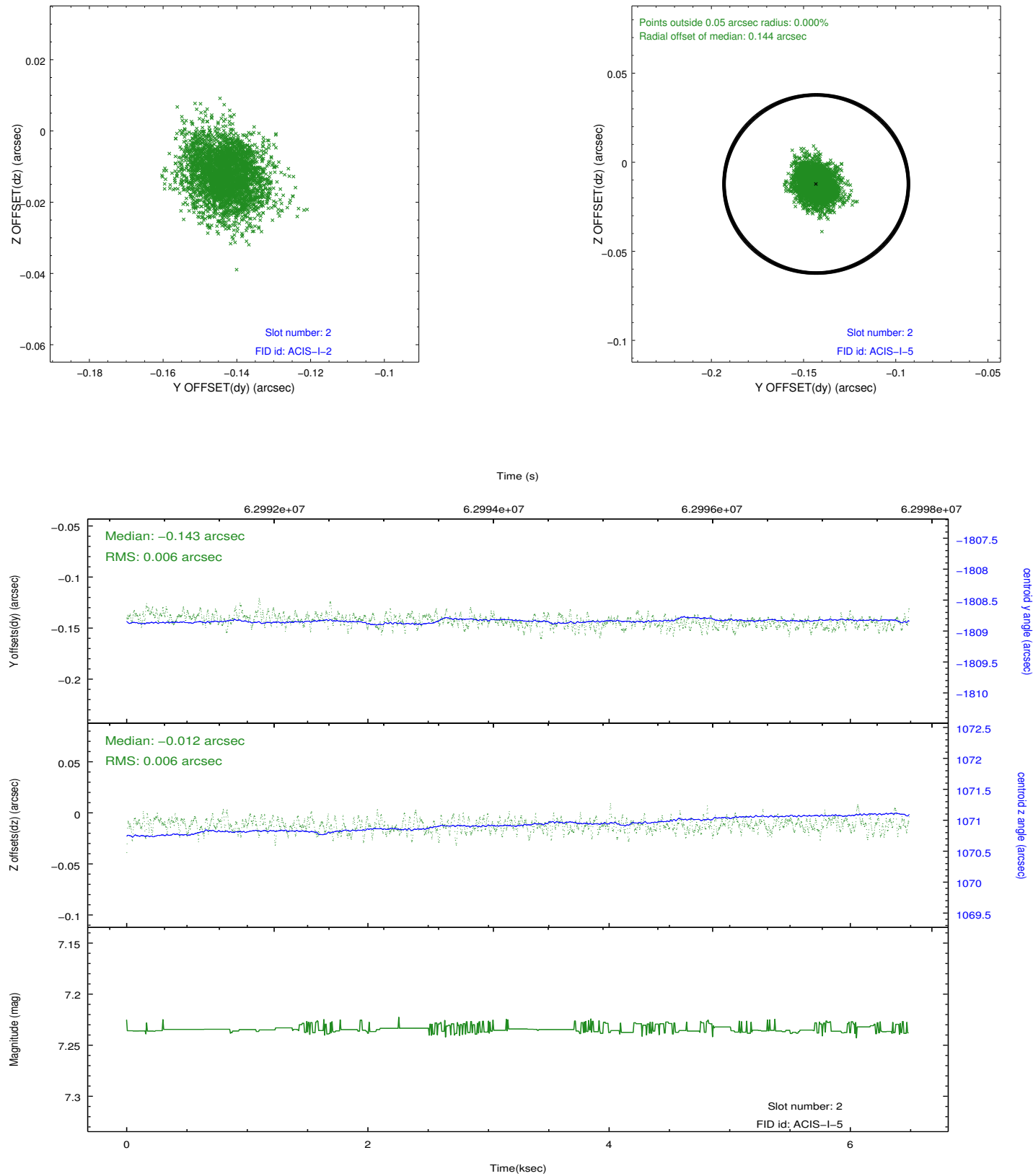
2.5.1 Slot 0



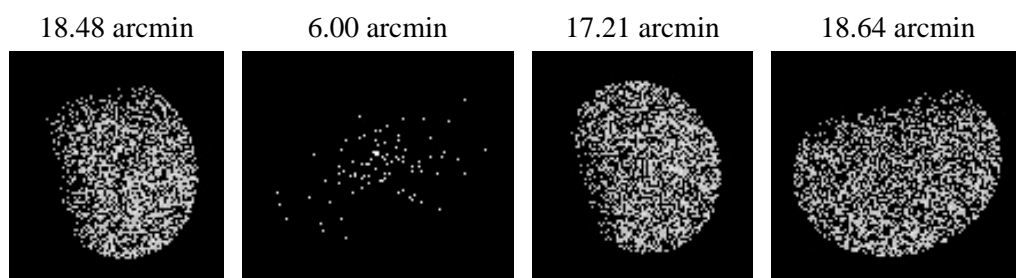
2.5.2 Slot 1



2.5.3 Slot 2



3 Point Sources



A Summary

A.1 Status

V&V Scientist	Beth Sundheim
V&V Date (YYYY-MM-DD)	2009.12.08
V&V Edition	1
V&V Disposition and Status	OK
V&V Charge Time	4.617

A.2 Comments

Charge time for this ObsId remains at previous value of 4.617 ksec, although with the current processing the charge time would have been 4.609 ksec.

==

Focal plane temperature is warmer than -118.7 C degrees during the entire observation. This temperature is the upper limit of the verified ACIS calibration for the front-illuminated chips. The focal plane temperature is also warmer than -116.7 degrees C for the entire observation. This temperature is the upper limit of the verified ACIS calibration for the back-illuminated chips. The ACIS spectral response calibration is less accurate at these warmer temperatures than it is at -119.7 C. Users whose science objectives depend on the most accurate spectral response (ie: fitting line-rich spectra) may notice an effect. Users whose science objectives do not depend on the most accurate spectral response should not notice an effect.