

V&V Reference Report

L2 ASCDS Version : 8.4.4

Observation 8200 - L2 Version 2
Chandra X-Ray Center

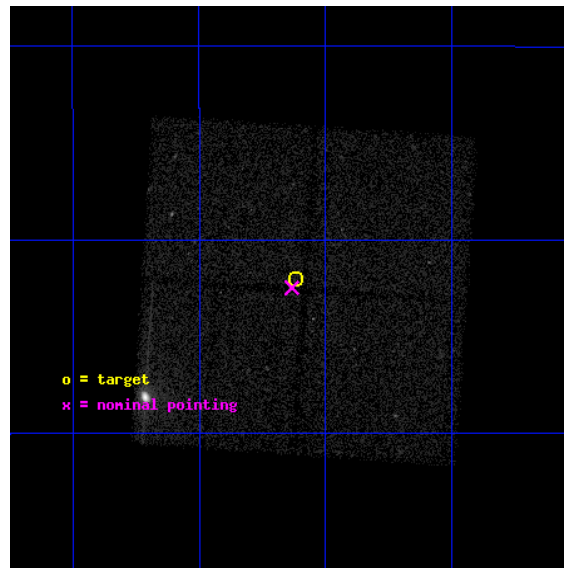
L2 Processing Date : Apr 28 2012

Contents

1	Front	2
2	OBI	3
2.1	OBI	3
2.1.1	Images	3
2.1.2	Bias	3
2.1.3	Parameters	4
2.1.4	Events	4
2.2	Compared Parameters	5
2.3	Aspect	6
2.4	Star Slots	9
2.4.1	Slot 3	9
2.4.2	Slot 4	10
2.4.3	Slot 5	11
2.4.4	Slot 6	12
2.4.5	Slot 7	13
2.5	FID Slots	14
2.5.1	Slot 0	14
2.5.2	Slot 1	15
2.5.3	Slot 2	16
A	Summary	17
A.1	Status	17
A.2	Comments	17

1 Front

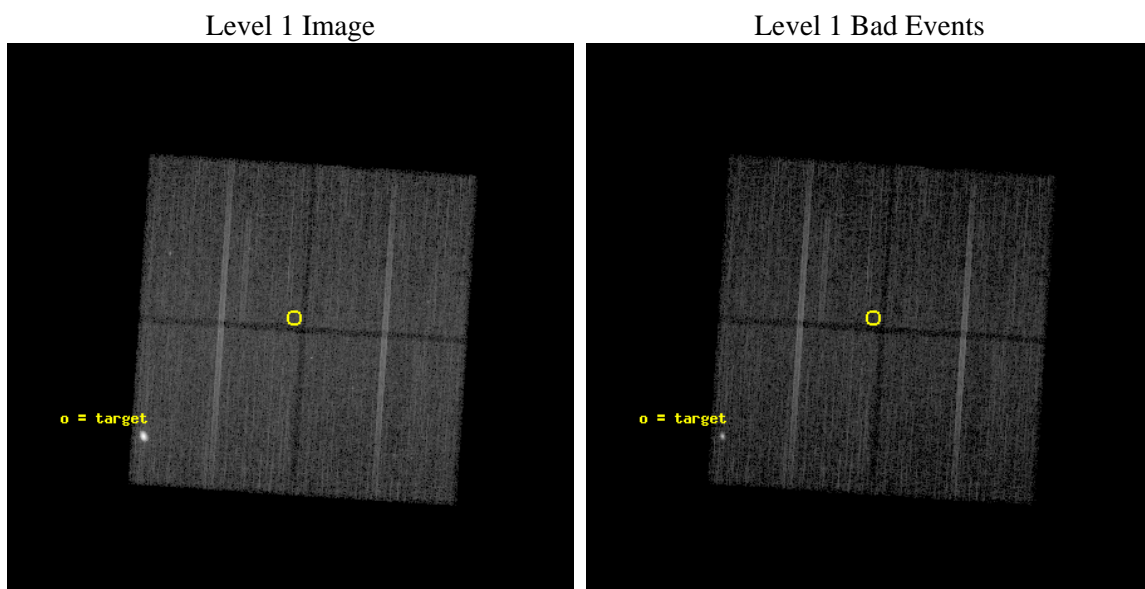
seq_num	600636	Sequence number
obs_id	8200	Observation id
title	Galactic Bulge Latitude Survey-2	Proposal title
observer	Professor Johnathan Grindlay	Principal investigator
object	GBW20	Source name
dtcycle	0	
cycle	P	events from which exps? Prim/Second/Both
ra_targ	265.03	Observer's specified target RA [deg]
dec_targ	-28.200528	Observer's specified target Dec [deg]
ra_nom	265.03334629672	Nominal RA [deg]
dec_nom	-28.208065544419	Nominal Dec [deg]
roll_nom	273.81027262344	Nominal Roll [deg]
revision	2	Processing version of data
ontime	14759.100113511	Sum of GTIs [s]
livetime	14566.261605037	Livetime [s]
ontime0	14755.856901109	Sum of GTIs [s]
ontime1	14759.038941324	Sum of GTIs [s]
ontime2	14755.939010978	Sum of GTIs [s]
ontime3	14759.100113511	Sum of GTIs [s]
l2events	79768	Number of level 2 events



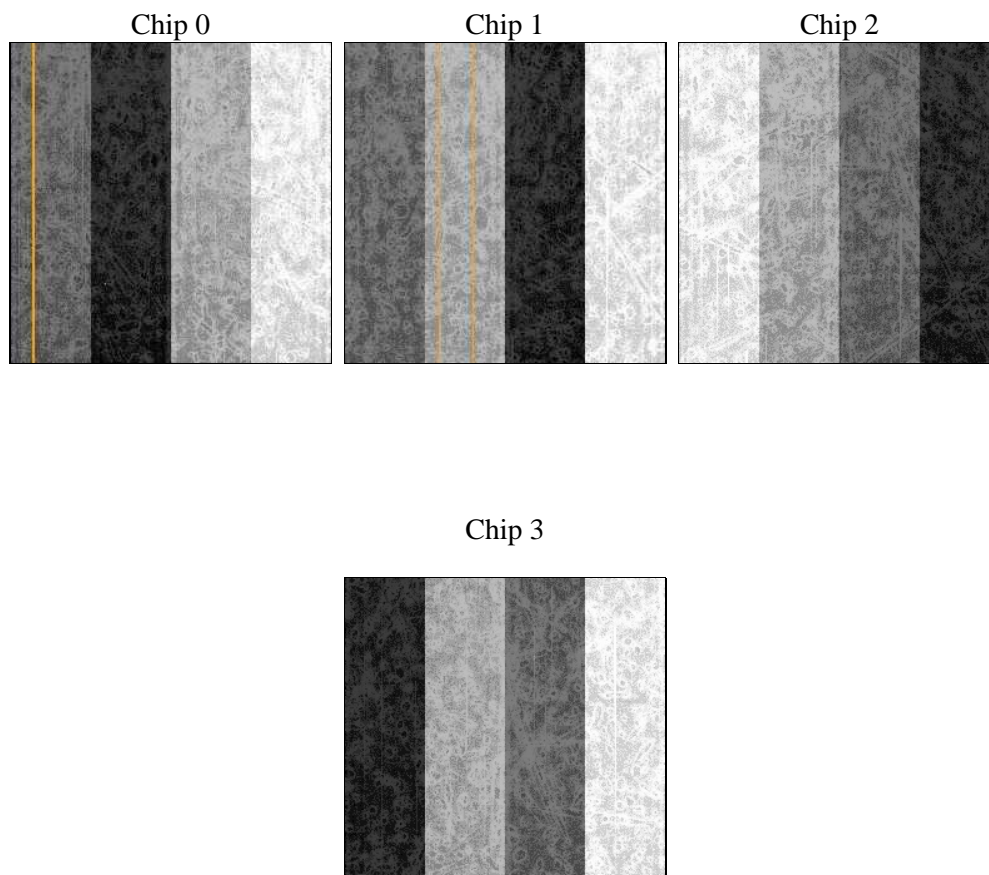
2 OBI

2.1 OBI

2.1.1 Images



2.1.2 Bias



2.1.3 Parameters

obi_num	0	Obi number	sched_exp_time	14700.000000	[s] Scheduled observation exposure time
ascdsver	8.4.4	Processing system revision	ontime	14759.100113511	Sum of GTIs [s]
caldsver	4.4.9	 	ontime0	14755.856901109	Sum of GTIs [s]
date	2012-04-28T15:55:41	Date and time of file creation	ontime1	14759.038941324	Sum of GTIs [s]
revision	2	Processing version of data	ontime2	14755.939010978	Sum of GTIs [s]
			ontime3	14759.100113511	Sum of GTIs [s]
			l1events	479596	Number of level 1 events

2.1.4 Events

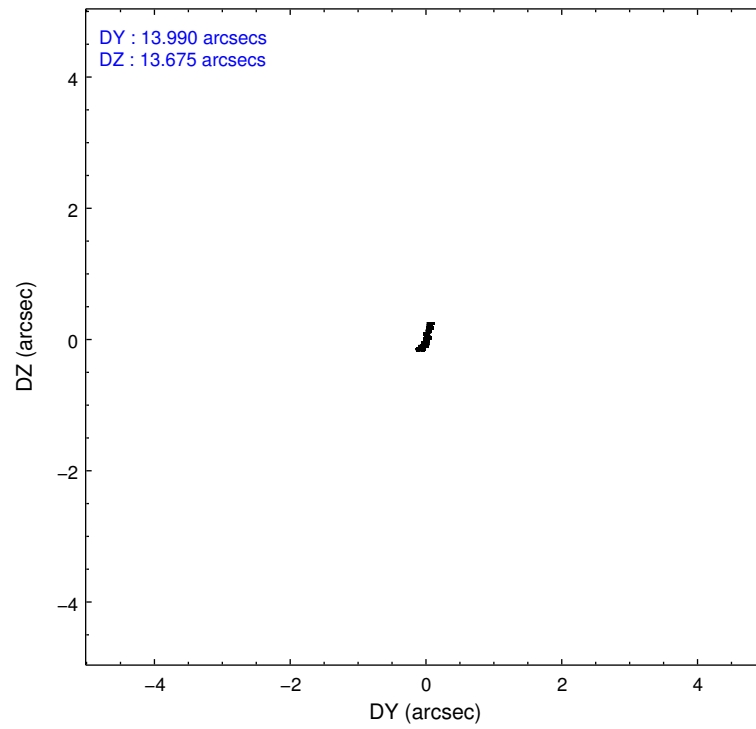
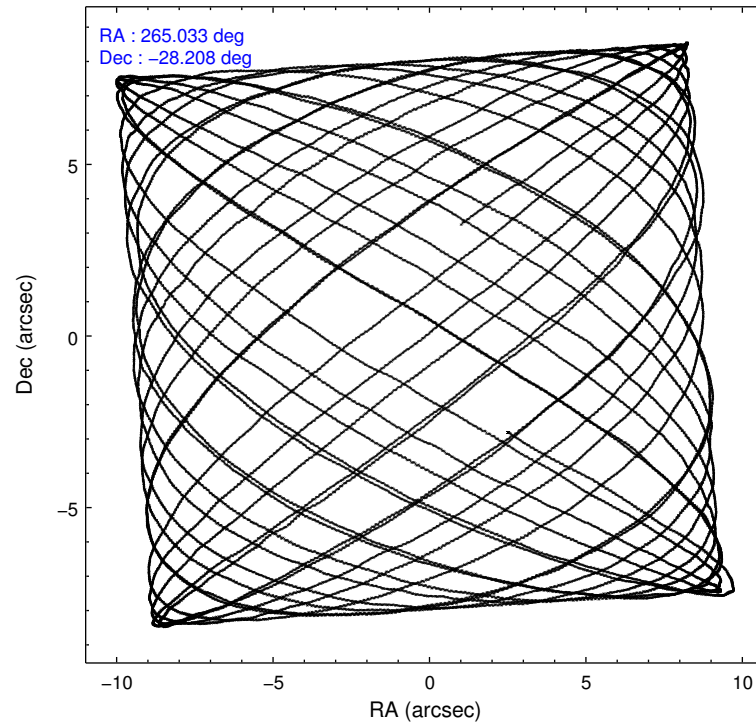
	ccd 0	ccd 1	ccd 2	ccd 3
level 1 events	103970	102732	162992	109902
rejected events	90688	89440	110616	97450
rejected %	87%	87%	67%	88%

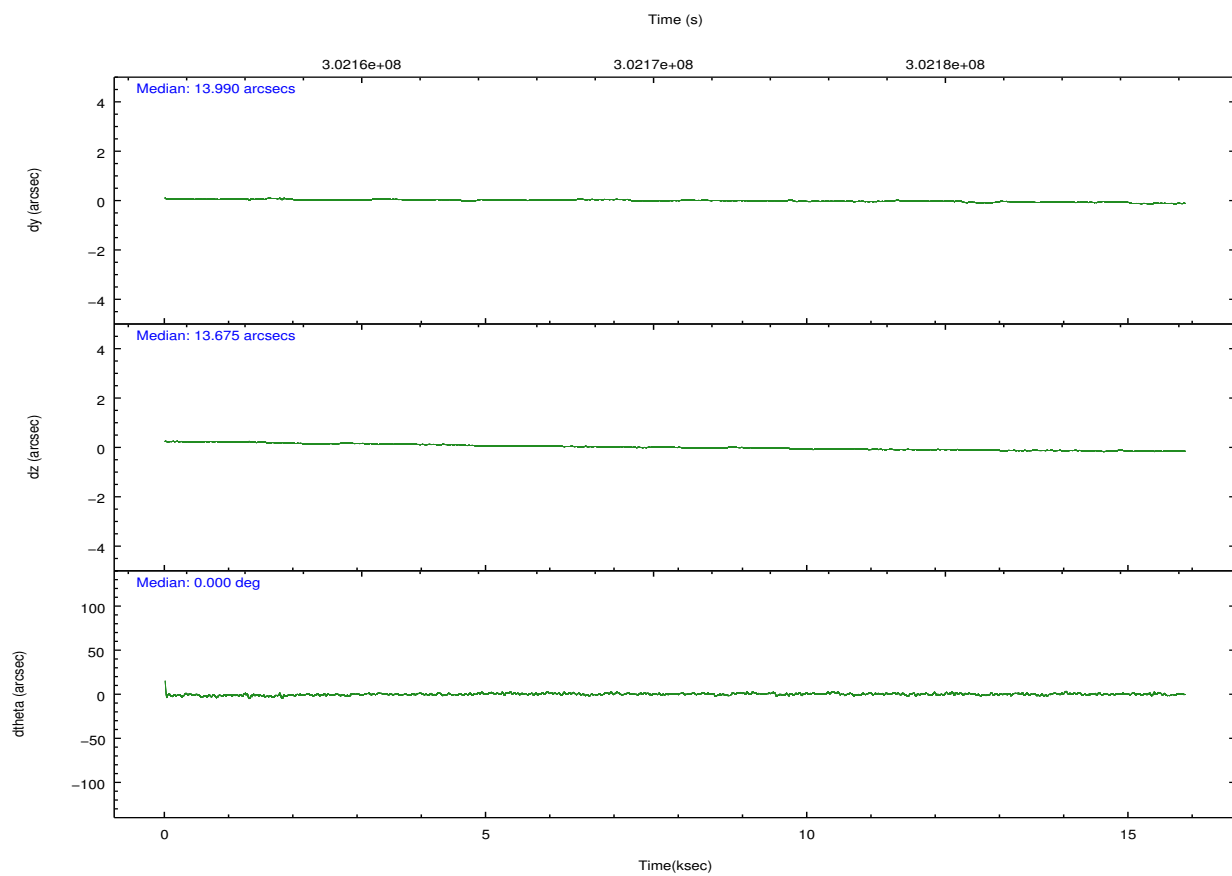
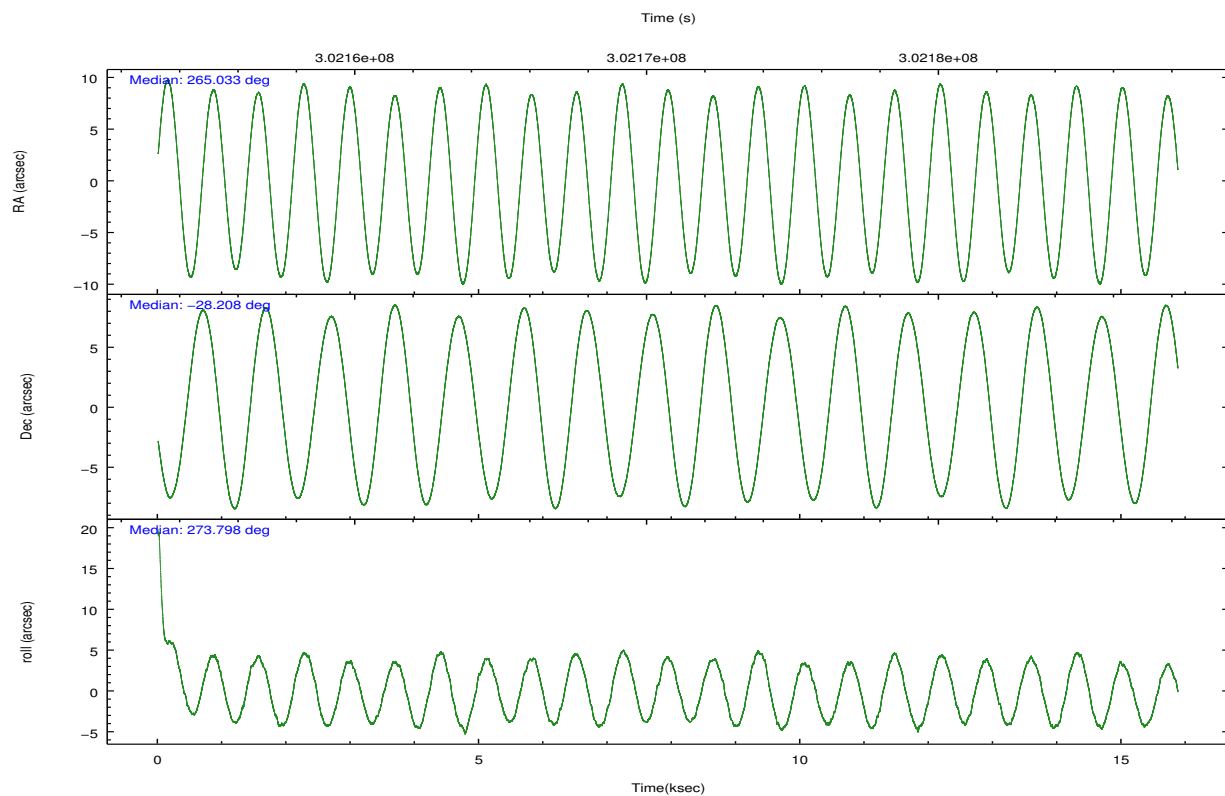
	ccd 0	ccd 1	ccd 2	ccd 3
grade 0 events	5845	5510	34118	5429
	5%	5%	20%	4%
grade 1 events	61	64	1189	93
	0%	0%	0%	0%
grade 2 events	2964	2687	8113	2464
	2%	2%	4%	2%
grade 3 events	1240	1396	3047	1230
	1%	1%	1%	1%
grade 4 events	1197	1360	3032	1260
	1%	1%	1%	1%
grade 5 events	3254	3655	3889	3772
	3%	3%	2%	3%
grade 6 events	2043	2341	4070	2069
	1%	2%	2%	1%
grade 7 events	87366	85719	105534	93585
	84%	83%	64%	85%

2.2 Compared Parameters

Parameter	Planned	Actual	Parameter	Planned	Actual
Instrument	ACIS	ACIS	Obspar format version number	7	7
Detector	ACIS-0123	ACIS-0123	Obspar file type	PREDICTED	ACTUAL
Grating	NONE	NONE	Obspar update status	NONE	UPDATED
Data mode	VFAINT	VFAINT	Number of optional ACIS chips dropped	0	0
Observation mode	POINTING	POINTING	On-chip summing requested	N	N
[deg] Pointing RA	265.015840	265.0333462967175	Subarray requested	NONE	NONE
[deg] Pointing Dec	-28.185275	-28.20806554441943	Alternating exposures requested	N	N
[deg] Pointing Roll	273.593308	273.8102726234359	[s] Primary exposure time	0.000000	3.1
[mm] SIM focus pos	-0.782348	-0.7809083437167272			
[mm] SIM defocus	0	0.001439871863259334			
[mm] SIM translation stage pos	-233.592463	-233.5874344608287			
[mm] SIM translation stage offset	0	-0.005018542100998502			
[s] Observation start time (MET)	302163618.184000	302162255.6459			
Observation start date	2007-07-30T06:19:13	2007-07-30T05:57:35			
[s] Observation end time (MET)	302178318.184000	302178453.20918			
Observation end date	2007-07-30T10:24:13	2007-07-30T10:27:33			
Read mode	TIMED	TIMED			

2.3 Aspect



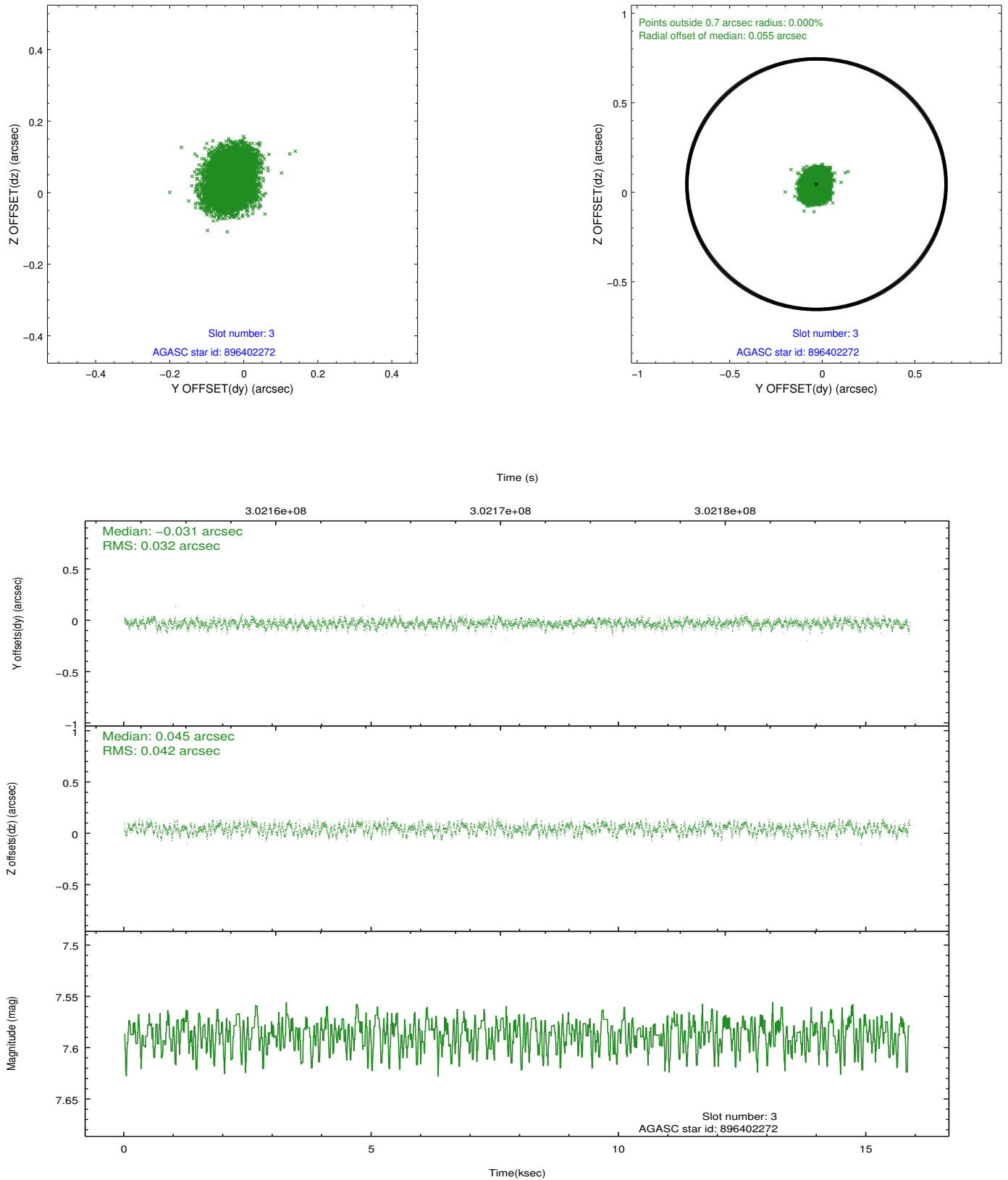


Slot Statistics

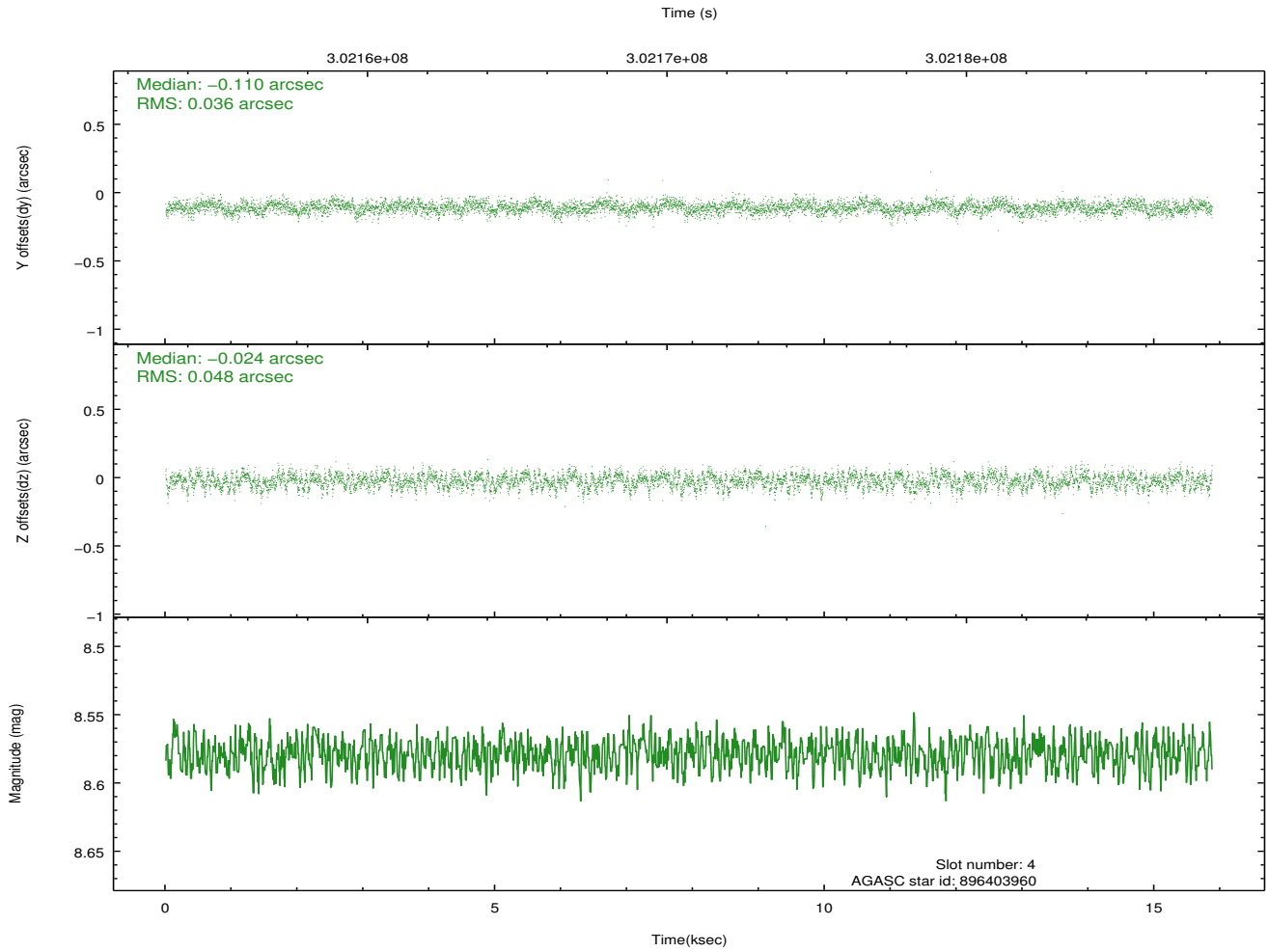
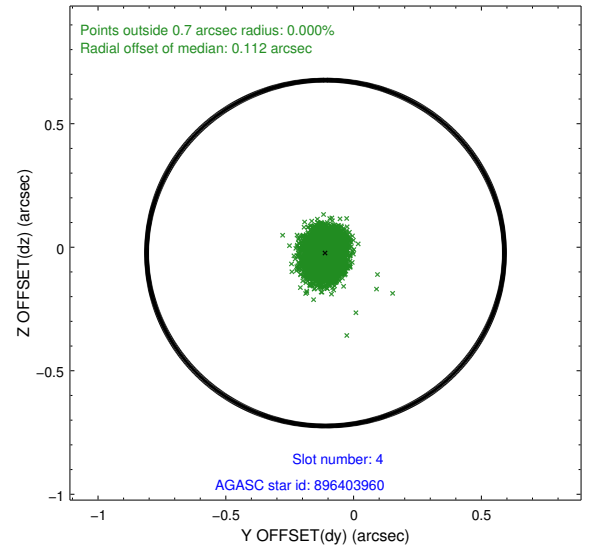
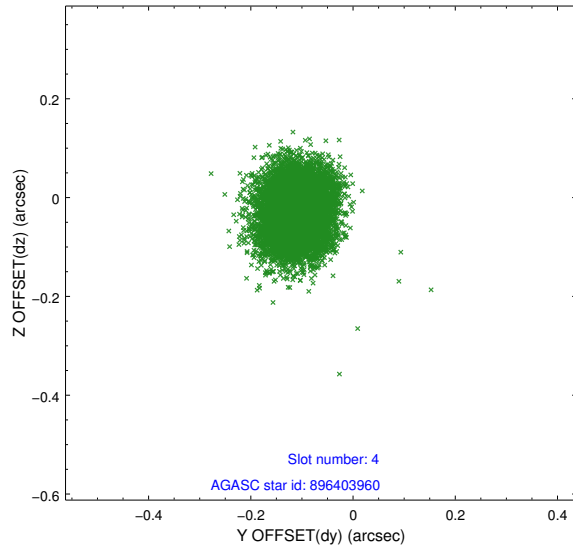
slot	status	id	mag	n_pts	med_dy	med_dz	dr1	dr2	ra	dec	mean_y	mean_z
0	FID	ACIS-I-2	7.13	3869	-0.159	-0.077	0.008	0.026	0.000000	0.000000	-768.86	-843.66
1	FID	ACIS-I-4	7.15	3871	0.129	0.080	0.009	0.014	0.000000	0.000000	2145.43	1062.42
2	FID	ACIS-I-6	7.24	3872	-0.069	0.061	0.012	0.022	0.000000	0.000000	391.76	1704.97
3	GUIDE	896402272	7.59	7743	-0.031	0.045	0.056	0.090	265.637294	-28.313189	587.92	1936.61
4	GUIDE	896403960	8.58	7741	-0.110	-0.024	0.063	0.103	264.379044	-28.245612	96.18	-2029.32
5	GUIDE	896404568	7.87	7740	0.016	-0.024	0.068	0.112	265.687293	-28.431080	1022.17	2065.53
6	GUIDE	896405048	8.29	7743	0.016	0.051	0.058	0.096	264.482575	-28.152230	-220.33	-1681.92
7	GUIDE	896406568	8.25	7741	0.111	-0.050	0.062	0.099	264.435951	-28.437282	795.56	-1889.44

2.4 Star Slots

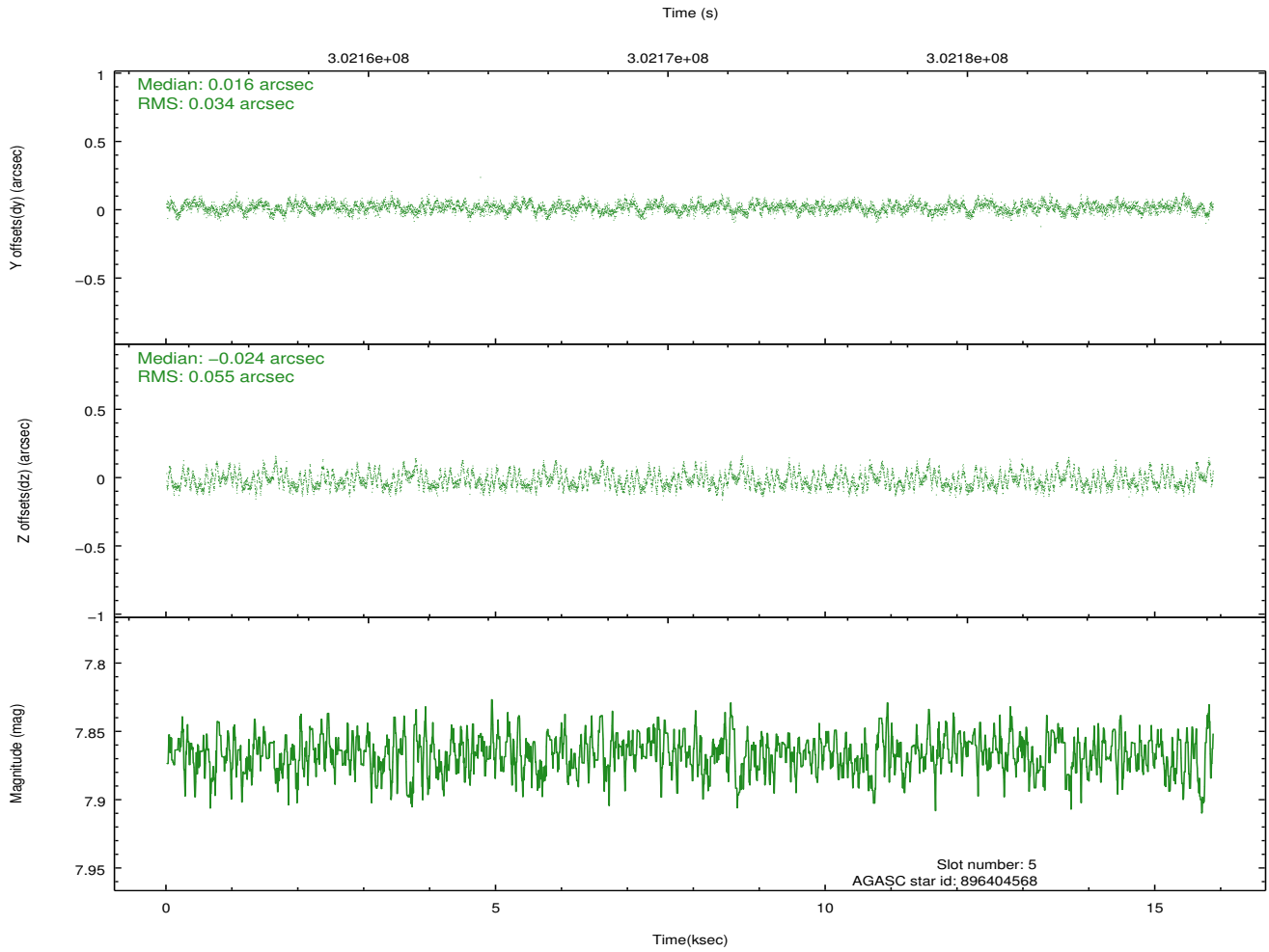
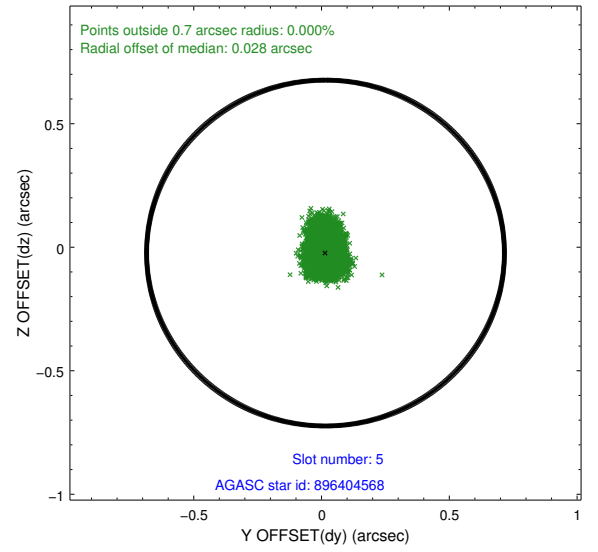
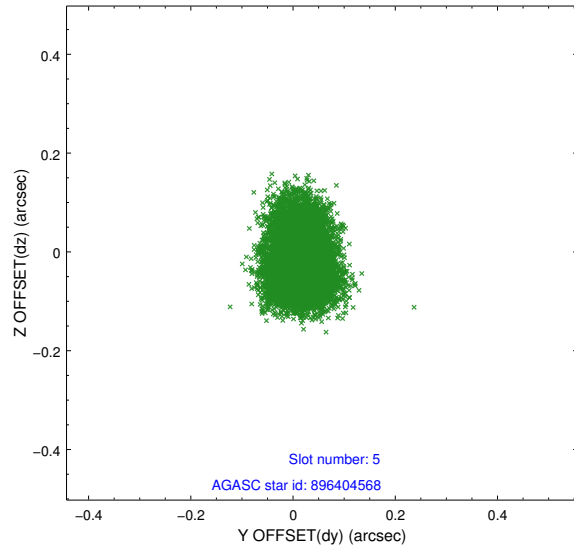
2.4.1 Slot 3



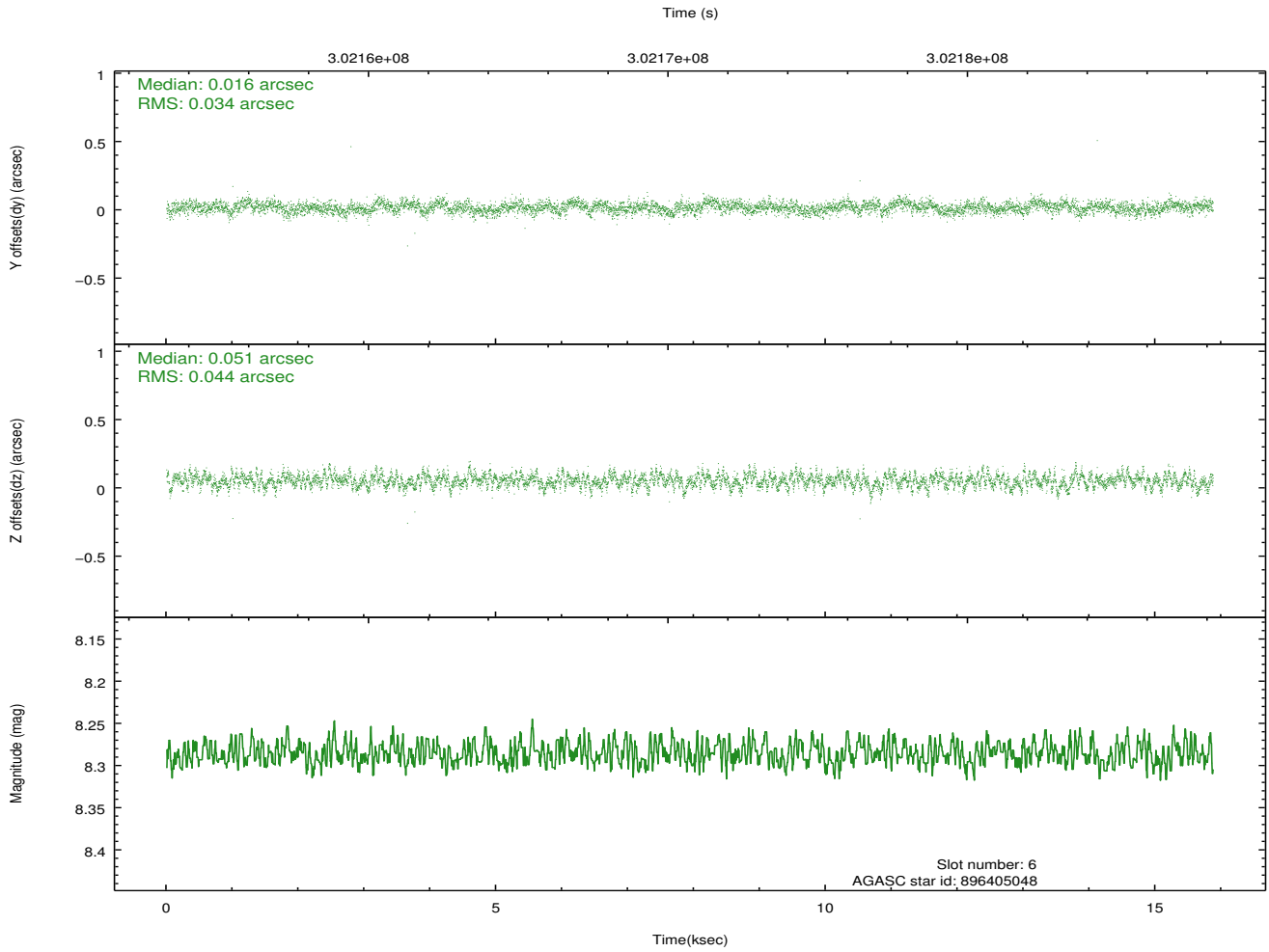
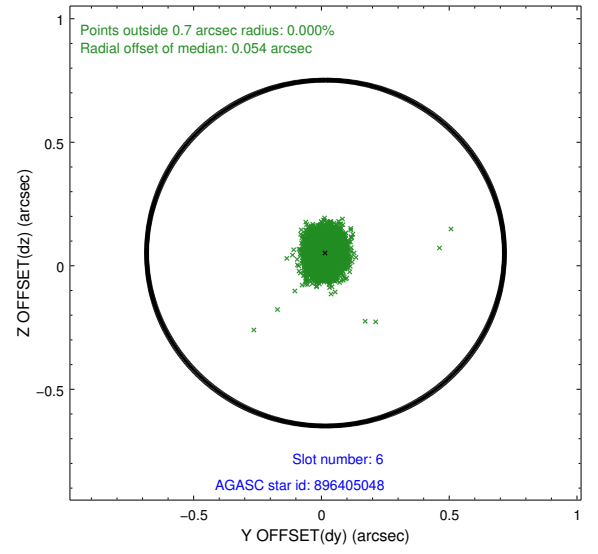
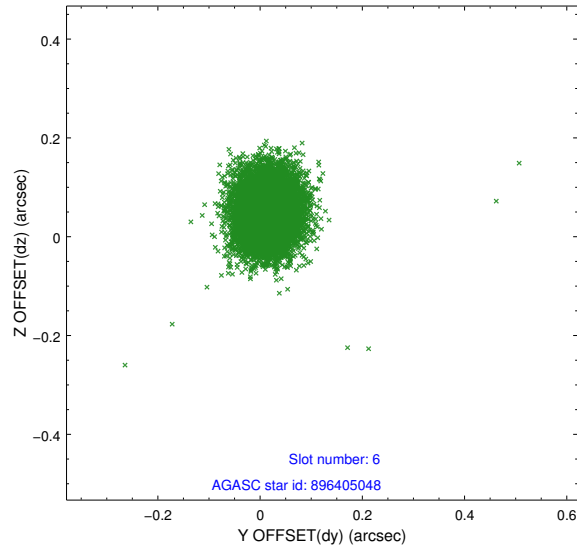
2.4.2 Slot 4



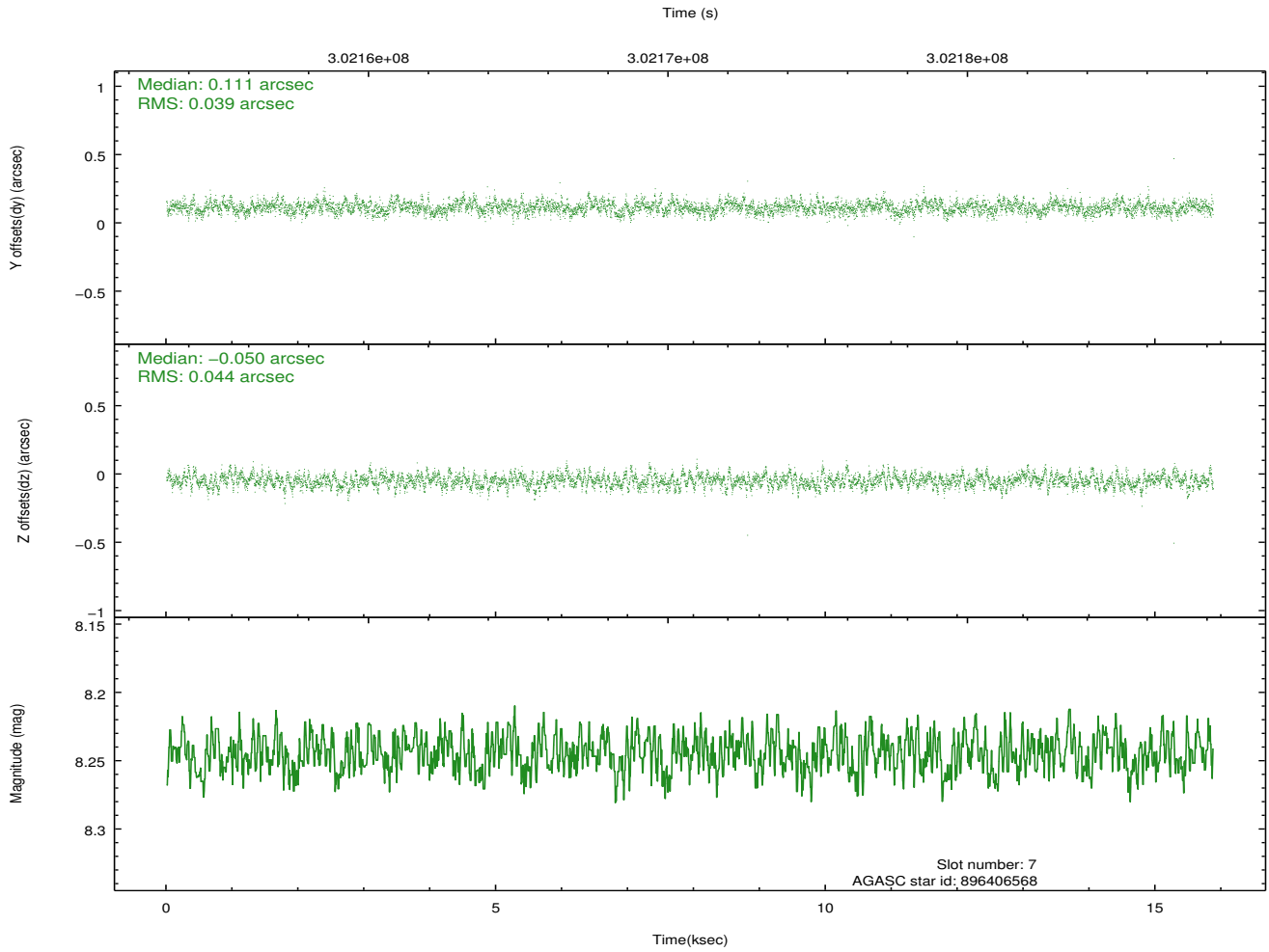
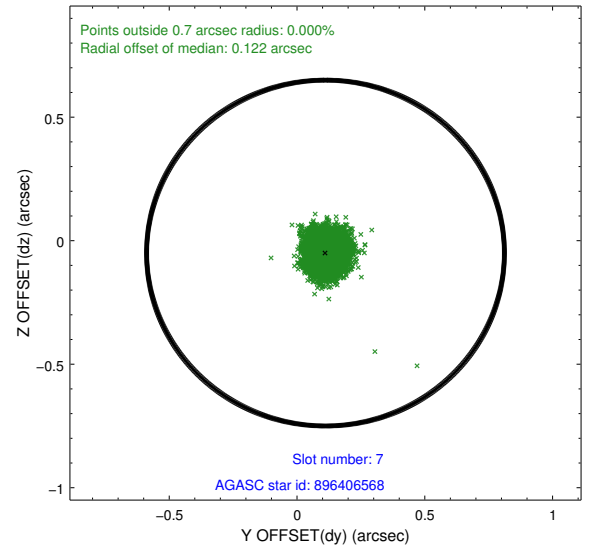
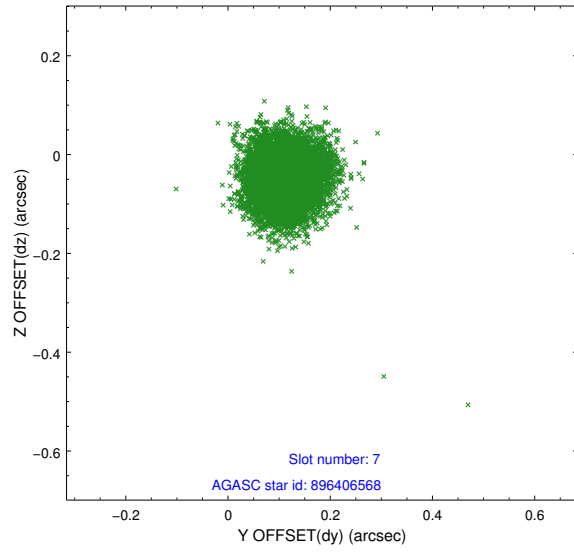
2.4.3 Slot 5



2.4.4 Slot 6

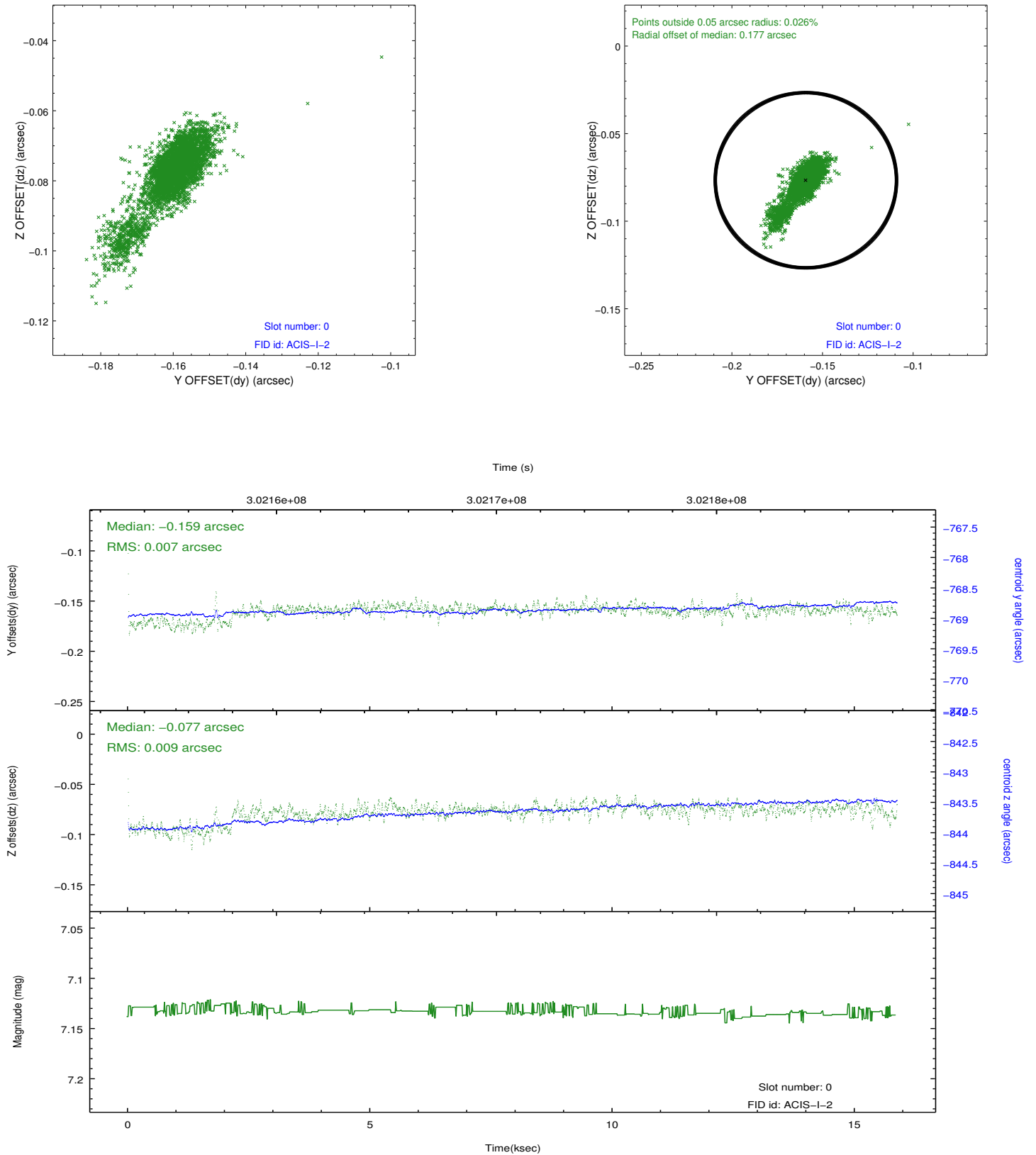


2.4.5 Slot 7

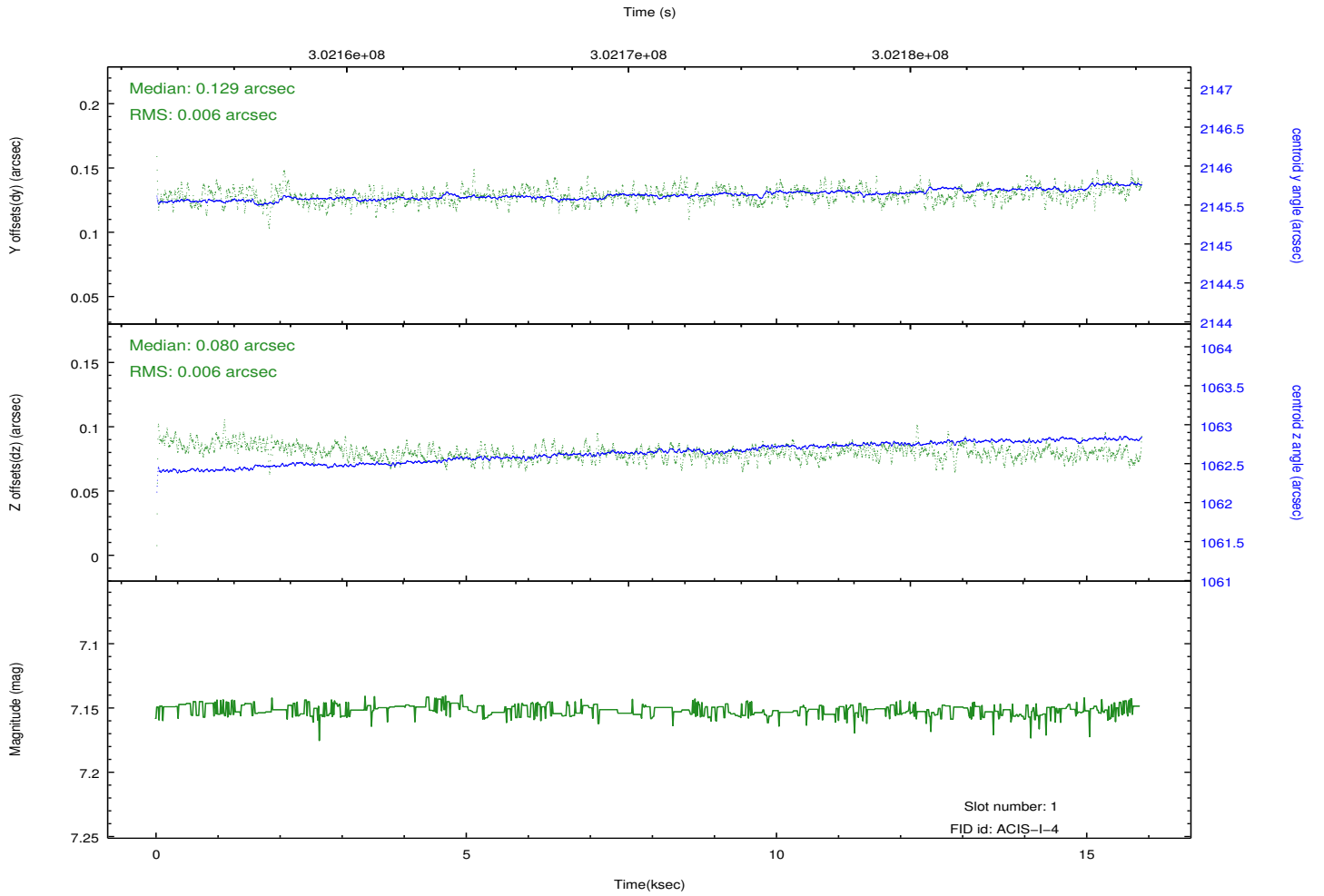
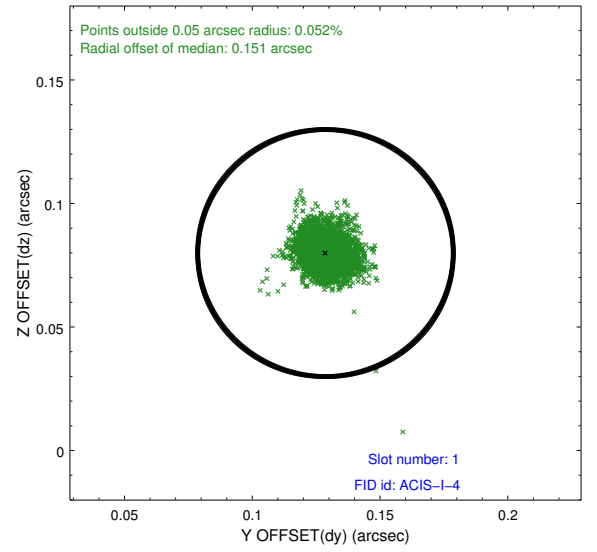
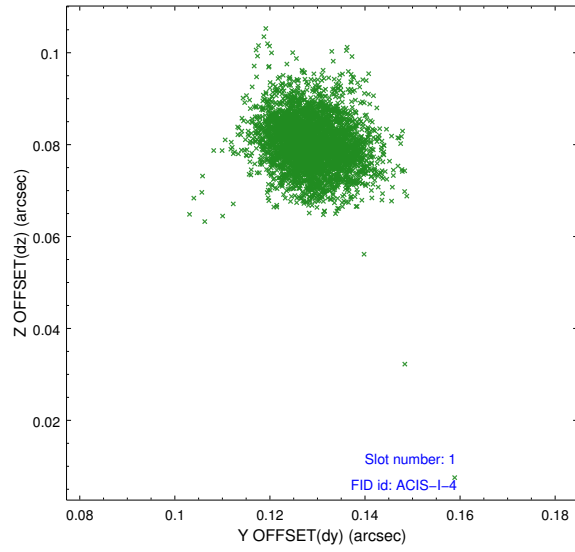


2.5 FID Slots

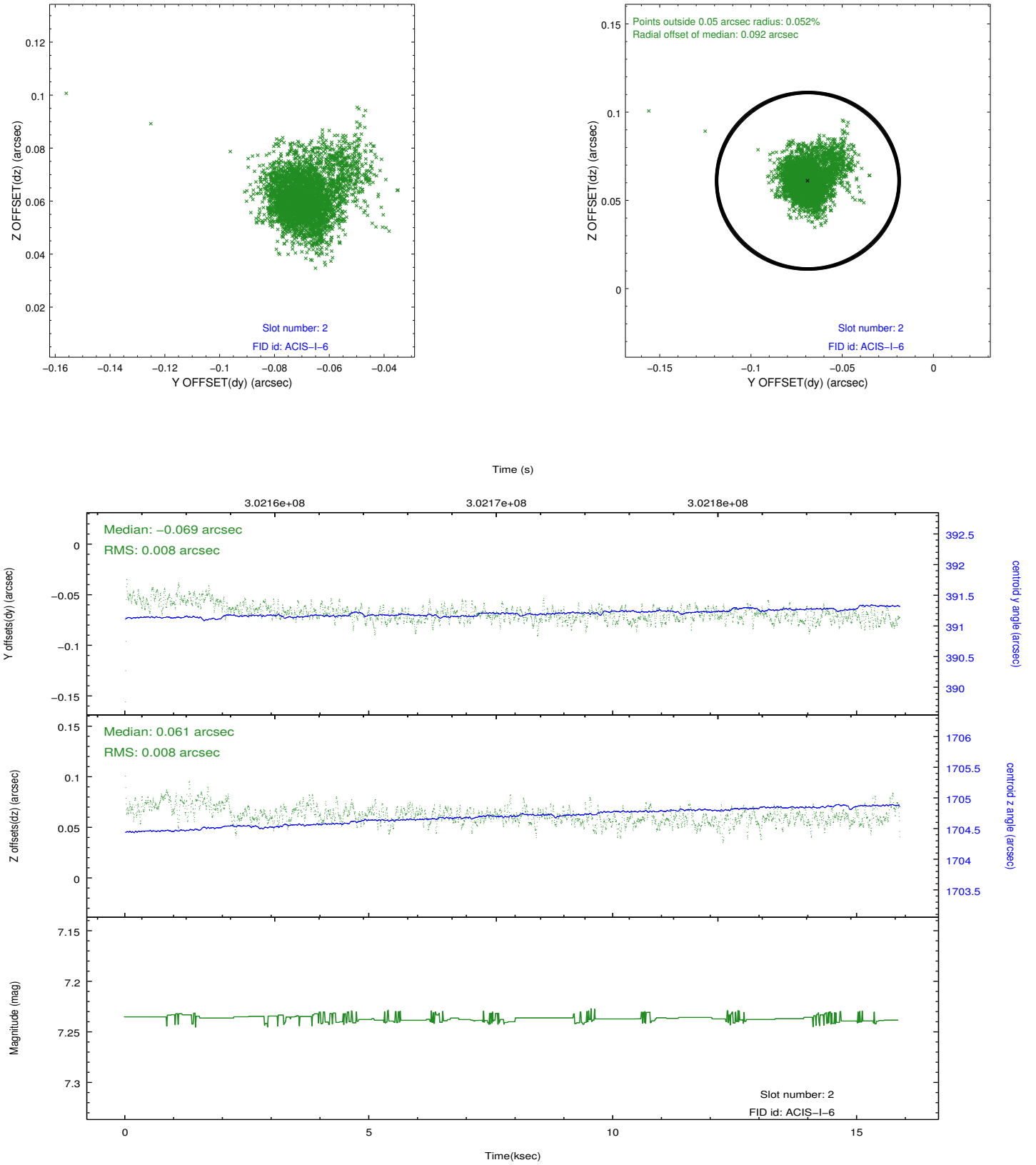
2.5.1 Slot 0



2.5.2 Slot 1



2.5.3 Slot 2



A Summary

A.1 Status

V&V Scientist	Jen Lauer
V&V Date (YYYY-MM-DD)	2012.05.01
V&V Edition	1
V&V Disposition and Status	OK
V&V Charge Time	14.7591001

A.2 Comments

Roll constraint met. Spatial window was requested by observer to block bright source in the field and prevent telemetry saturation, but spatial window was apparently not used. However, no telemetry saturation is detected.