

# V&V Reference Report

## L2 ASCDS Version : 8.4.4

Observation 7480 - L2 Version 2  
Chandra X-Ray Center

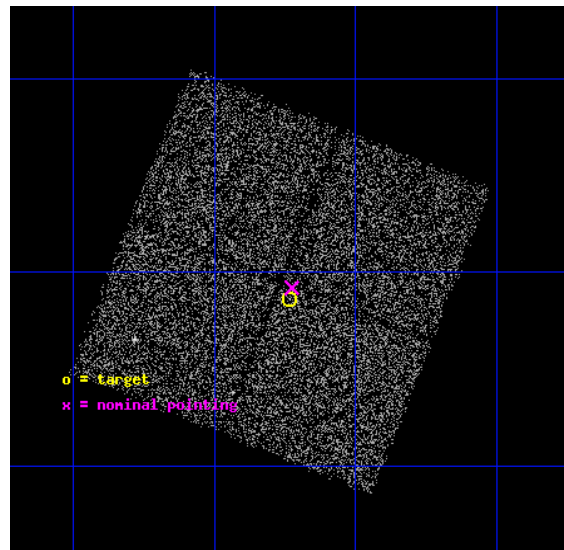
L2 Processing Date : Apr 25 2012

## Contents

<b>1</b>	<b>Front</b>	<b>2</b>
<b>2</b>	<b>OBI</b>	<b>3</b>
2.1	OBI . . . . .	3
2.1.1	Images . . . . .	3
2.1.2	Bias . . . . .	3
2.1.3	Parameters . . . . .	4
2.1.4	Events . . . . .	4
2.2	Compared Parameters . . . . .	5
2.3	Aspect . . . . .	6
2.4	Star Slots . . . . .	9
2.4.1	Slot 3 . . . . .	9
2.4.2	Slot 4 . . . . .	10
2.4.3	Slot 5 . . . . .	11
2.4.4	Slot 6 . . . . .	12
2.4.5	Slot 7 . . . . .	13
2.5	FID Slots . . . . .	14
2.5.1	Slot 0 . . . . .	14
2.5.2	Slot 1 . . . . .	15
2.5.3	Slot 2 . . . . .	16
<b>A</b>	<b>Summary</b>	<b>17</b>
A.1	Status . . . . .	17
A.2	Comments . . . . .	17

# 1 Front

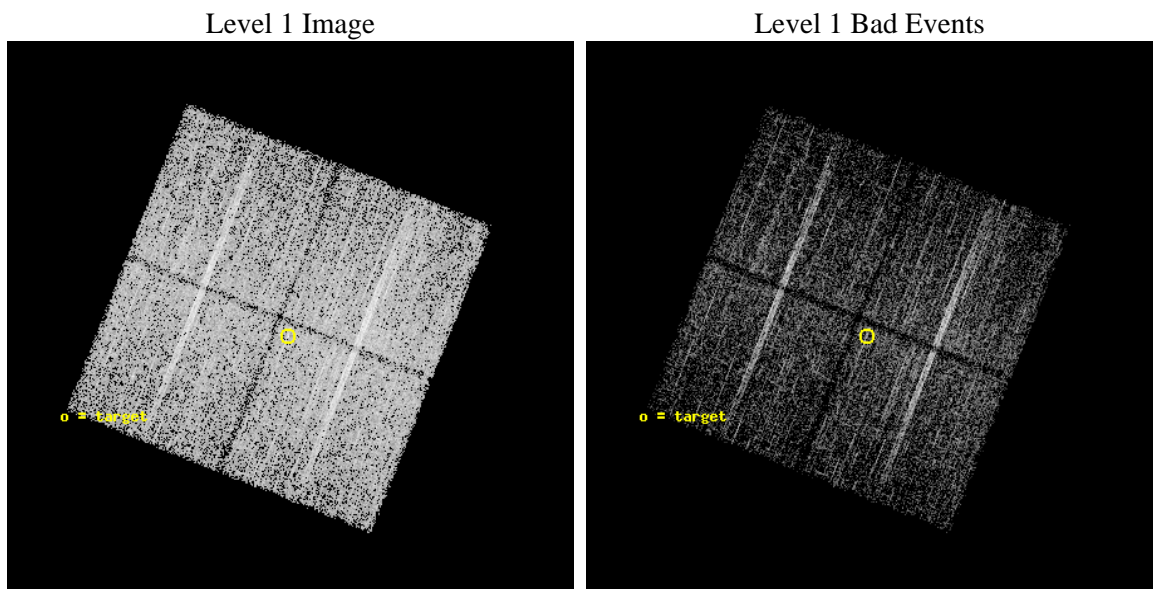
seq_num	400590	Sequence number
obs_id	7480	Observation id
title	A Red Giant Companion for the Transient 7.8 s Pulsar XTE J1829-098 ?	&#160
observer	Prof. Jules Halpern	Principal investigator
object	XTE J1829-098	Source name
dtcycle	0	&#160
cycle	P	events from which exps? Prim/Second/Both
ra_targ	277.43375	Observer's specified target RA [deg]
dec_targ	-9.856472	Observer's specified target Dec [deg]
ra_nom	277.43159172331	Nominal RA [deg]
dec_nom	-9.8466032954565	Nominal Dec [deg]
roll_nom	111.72122311491	Nominal Roll [deg]
revision	2	Processing version of data
ontime	5161.5000396967	Sum of GTIs [s]
livetime	5094.061241837	Livetime [s]
ontime0	5161.5000396967	Sum of GTIs [s]
ontime1	5161.5000396967	Sum of GTIs [s]
ontime2	5161.5000396967	Sum of GTIs [s]
ontime3	5161.5000396967	Sum of GTIs [s]
l2events	21864	Number of level 2 events



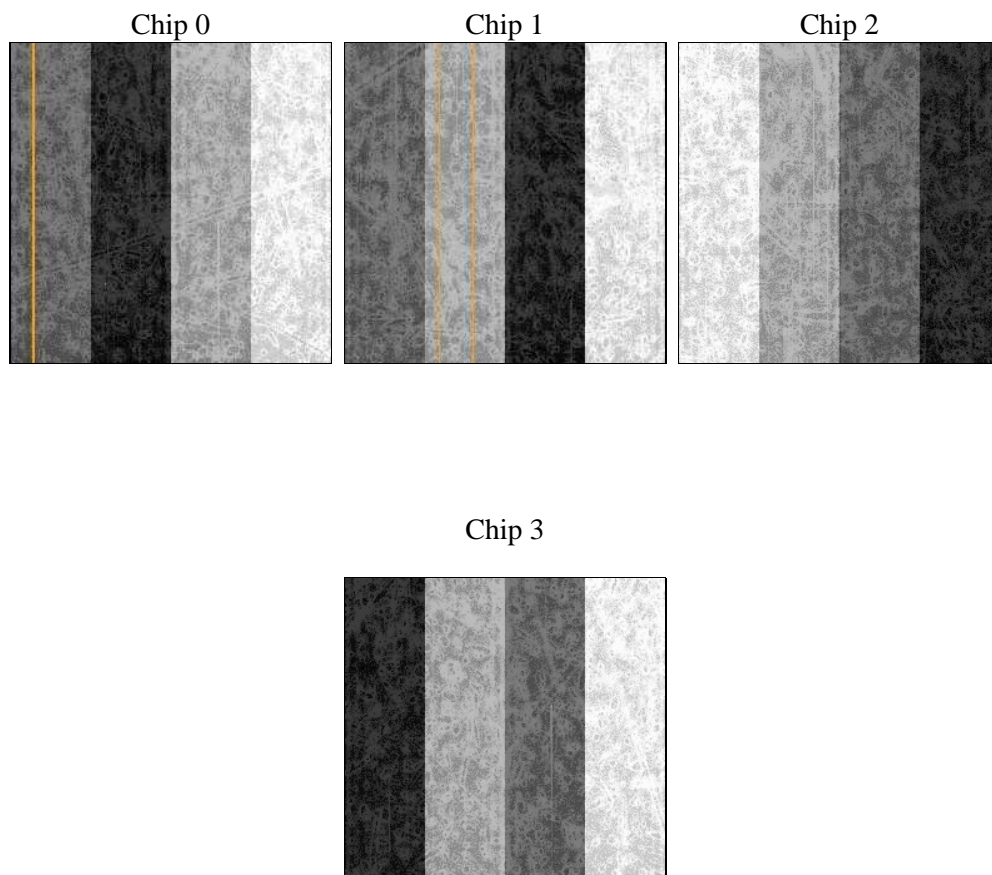
## 2 OBI

### 2.1 OBI

#### 2.1.1 Images



#### 2.1.2 Bias



### 2.1.3 Parameters

obi_num	0	Obi number	sched_exp_time	5000.000000	[s] Scheduled observation exposure time
ascdsver	8.4.4	Processing system revision	ontime	5161.5000396967	Sum of GTIs [s]
caldsver	4.4.9	&#160	ontime0	5161.5000396967	Sum of GTIs [s]
date	2012-04-25T09:01:04	Date and time of file creation	ontime1	5161.5000396967	Sum of GTIs [s]
revision	2	Processing version of data	ontime2	5161.5000396967	Sum of GTIs [s]
			ontime3	5161.5000396967	Sum of GTIs [s]
			l1events	244763	Number of level 1 events

### 2.1.4 Events

	ccd 0	ccd 1	ccd 2	ccd 3
level 1 events	57850	58679	65290	62944
rejected events	51567	52105	59085	56649
rejected %	89%	88%	90%	89%

	ccd 0	ccd 1	ccd 2	ccd 3
grade 0 events	3621	3456	3648	3696
	6%	5%	5%	5%
grade 1 events	35	25	42	45
	0%	0%	0%	0%
grade 2 events	1768	1986	1732	1597
	3%	3%	2%	2%
grade 3 events	745	757	694	711
	1%	1%	1%	1%
grade 4 events	712	755	720	700
	1%	1%	1%	1%
grade 5 events	2517	2756	2539	2905
	4%	4%	3%	4%
grade 6 events	1389	1647	1336	1404
	2%	2%	2%	2%
grade 7 events	47063	47297	54579	51886
	81%	80%	83%	82%

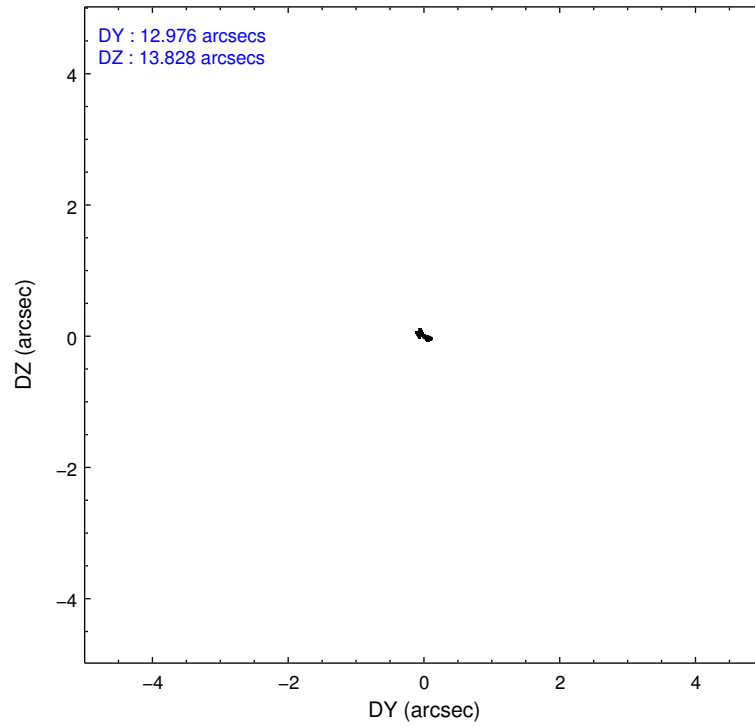
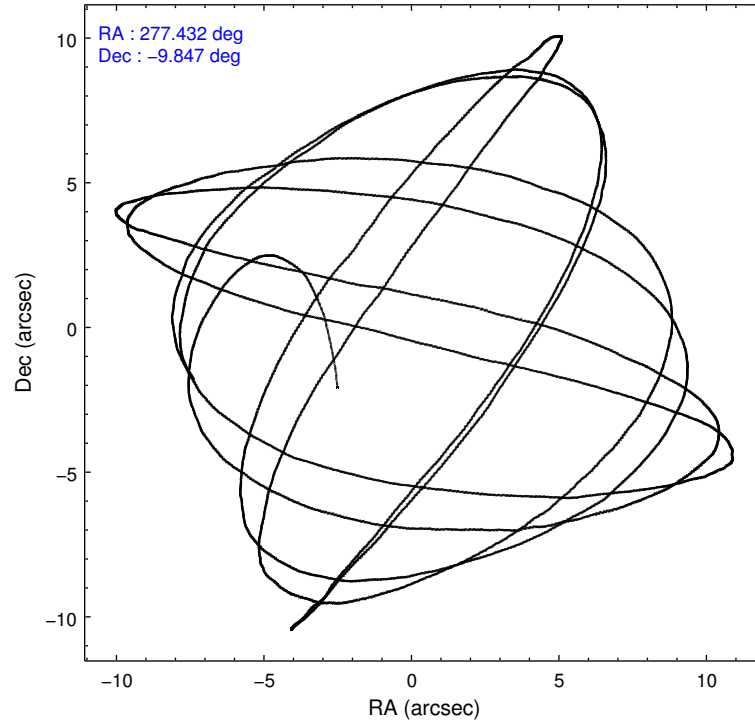


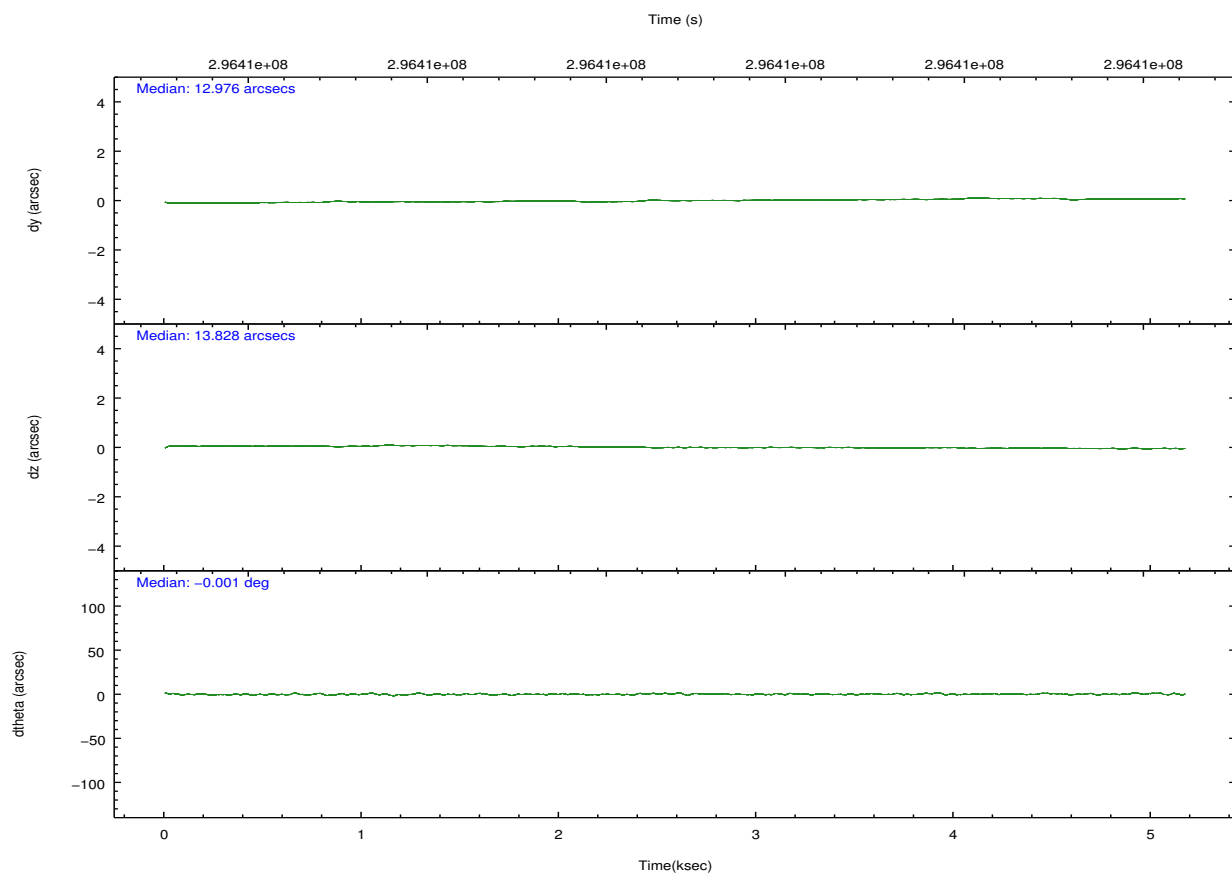
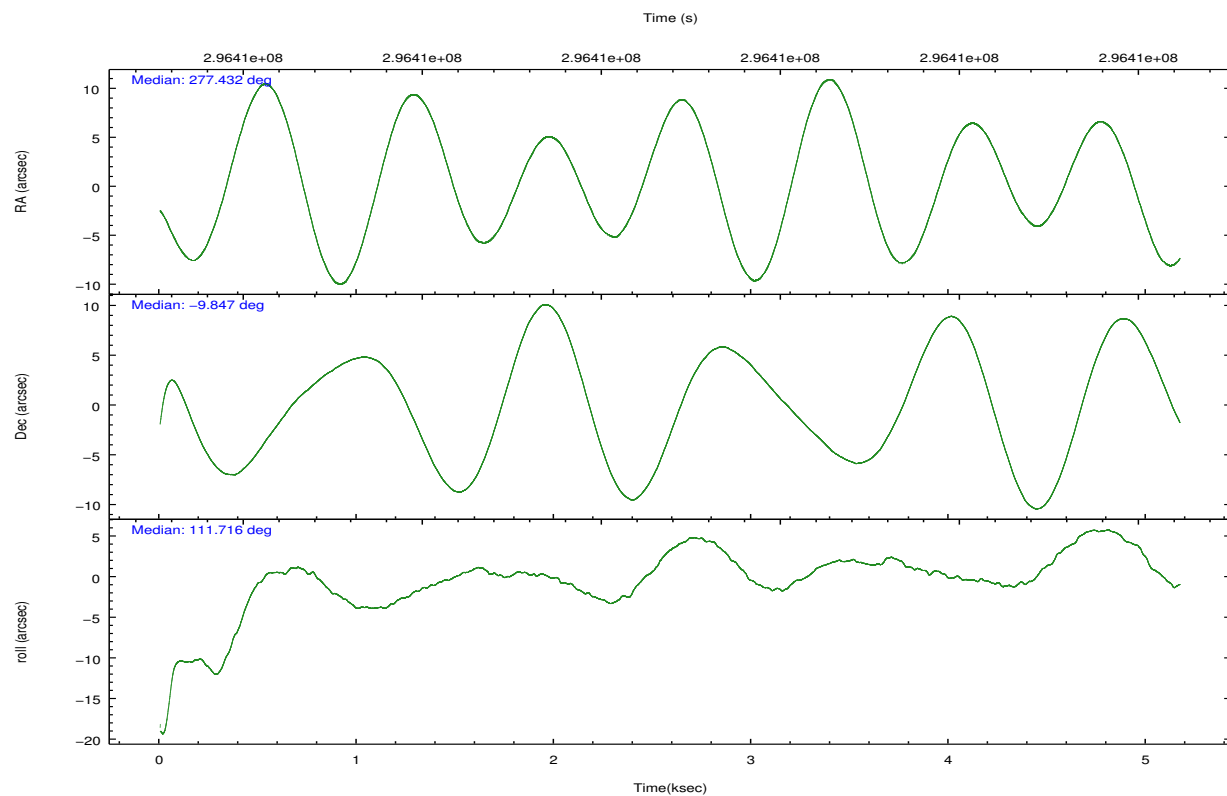
## 2.2 Compared Parameters

Parameter	Planned	Actual
Instrument	ACIS	ACIS
Detector	ACIS-0123	ACIS-0123
Grating	NONE	NONE
Data mode	VFAINT	VFAINT
Observation mode	POINTING	POINTING
[deg] Pointing RA	277.453675	277.4315917233077
[deg] Pointing Dec	-9.863547	-9.846603295456534
[deg] Pointing Roll	111.516328	111.7212231149134
[mm] SIM focus pos	-0.782348	-0.7809083437167272
[mm] SIM defocus	0	0.001439871863259334
[mm] SIM translation stage pos	-233.592463	-233.5899487761303
[mm] SIM translation stage offset	0	-0.002504226799430853
[s] Observation start time (MET)	296405968.184000	296404214.8578
Observation start date	2007-05-24T14:58:23	2007-05-24T14:30:14
[s] Observation end time (MET)	296410968.184000	296411289.40814
Observation end date	2007-05-24T16:21:43	2007-05-24T16:28:09
Read mode	TIMED	TIMED

Parameter	Planned	Actual
Obspar format version number	7	7
Obspar file type	PREDICTED	ACTUAL
Obspar update status	NONE	UPDATED
CCD I0 on	O1	Y
CCD I1 on	O2	Y
CCD I2 on	O3	Y
CCD I3 on	Y	Y
CCD S0 on	N	N
CCD S1 on	N	N
CCD S2 on	N	N
CCD S3 on	N	N
CCD S4 on	N	N
CCD S5 on	N	N
Number of optional ACIS chips dropped	0	0
On-chip summing requested	N	N
Subarray requested	NONE	NONE
Alternating exposures requested	N	N
[s] Primary exposure time	0.000000	3.1

## 2.3 Aspect



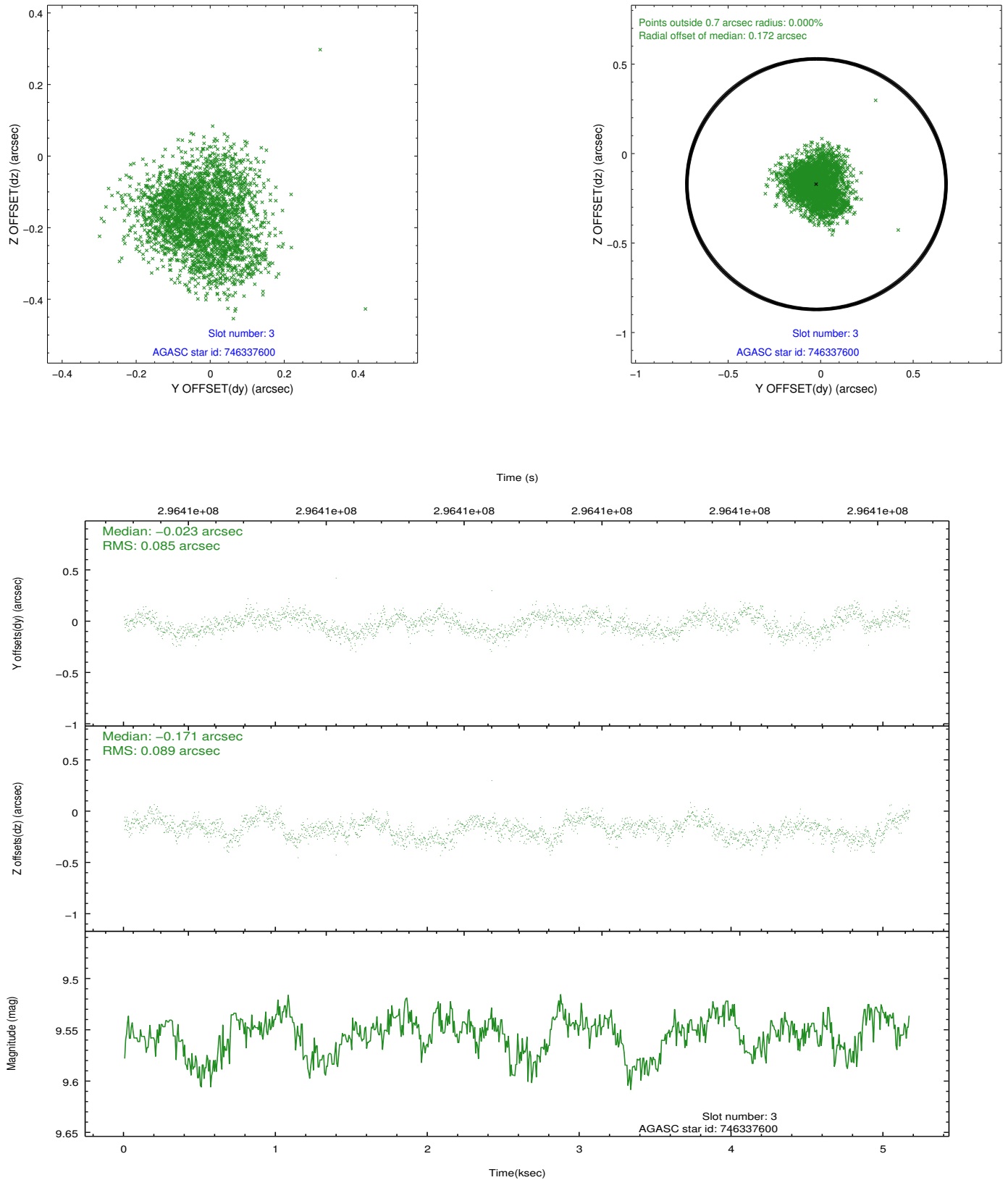


### Slot Statistics

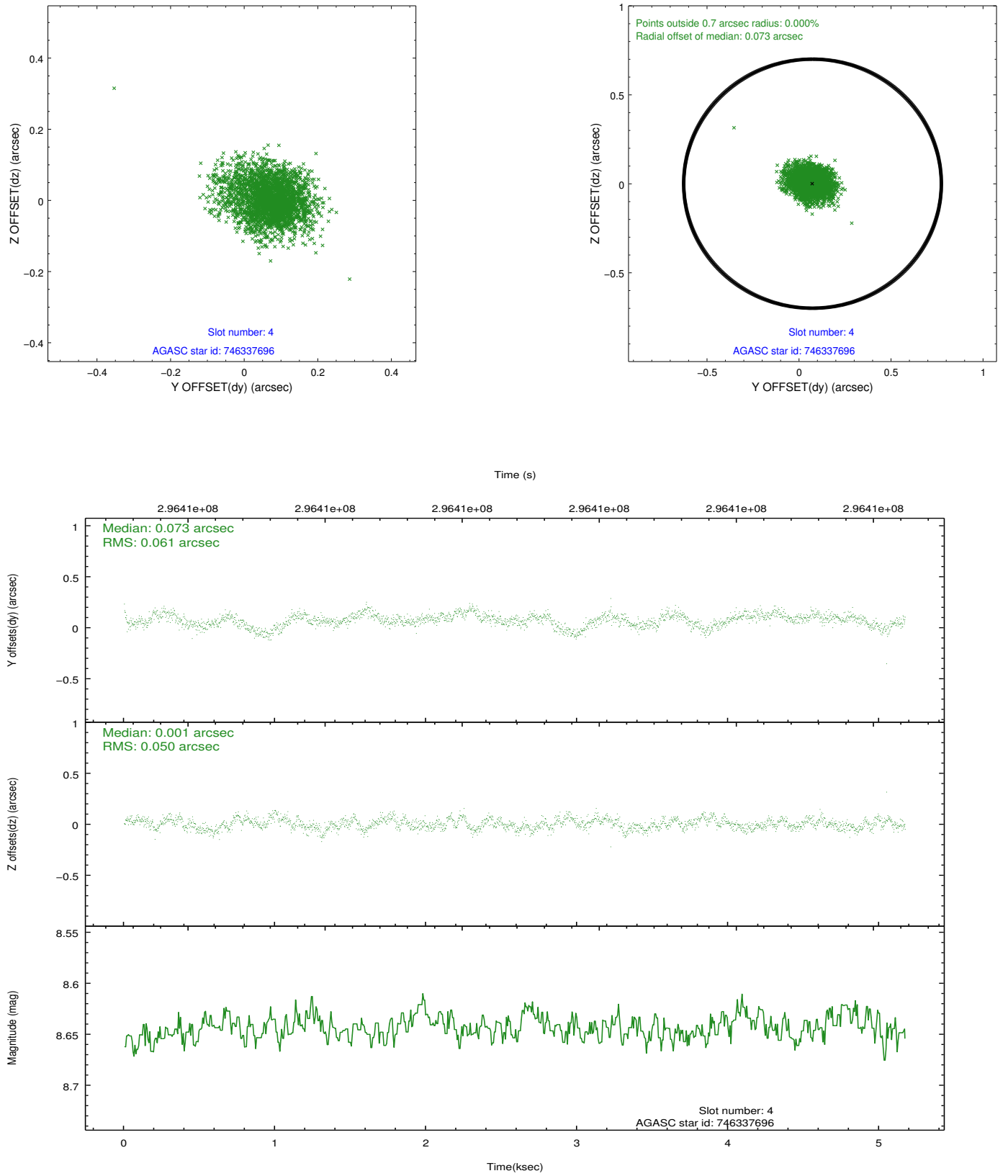
slot	status	id	mag	n_pts	med_dy	med_dz	dr1	dr2	ra	dec	mean_y	mean_z
0	FID	ACIS-I-2	7.14	1261	-0.077	-0.071	0.009	0.015	0.000000	0.000000	-767.72	-843.78
1	FID	ACIS-I-4	7.16	1261	0.239	0.067	0.006	0.011	0.000000	0.000000	2146.15	1061.89
2	FID	ACIS-I-5	7.21	1261	-0.262	0.072	0.009	0.015	0.000000	0.000000	-1820.20	1061.15
3	GUIDE	746337600	9.55	2521	-0.023	-0.171	0.132	0.204	277.210435	-9.639804	1065.66	507.58
4	GUIDE	746337696	8.64	2521	0.073	0.001	0.082	0.139	277.198817	-10.226535	-884.83	1319.08
5	GUIDE	746338440	9.67	2519	-0.235	0.221	0.116	0.179	277.545963	-9.496982	1107.09	-788.15
6	GUIDE	746338464	9.43	2521	0.119	-0.071	0.095	0.155	277.427613	-10.292647	-1402.61	651.80
7	GUIDE	745936064	10.19	2512	0.074	0.025	0.205	0.318	277.729763	-9.032377	2423.22	-2010.29

## 2.4 Star Slots

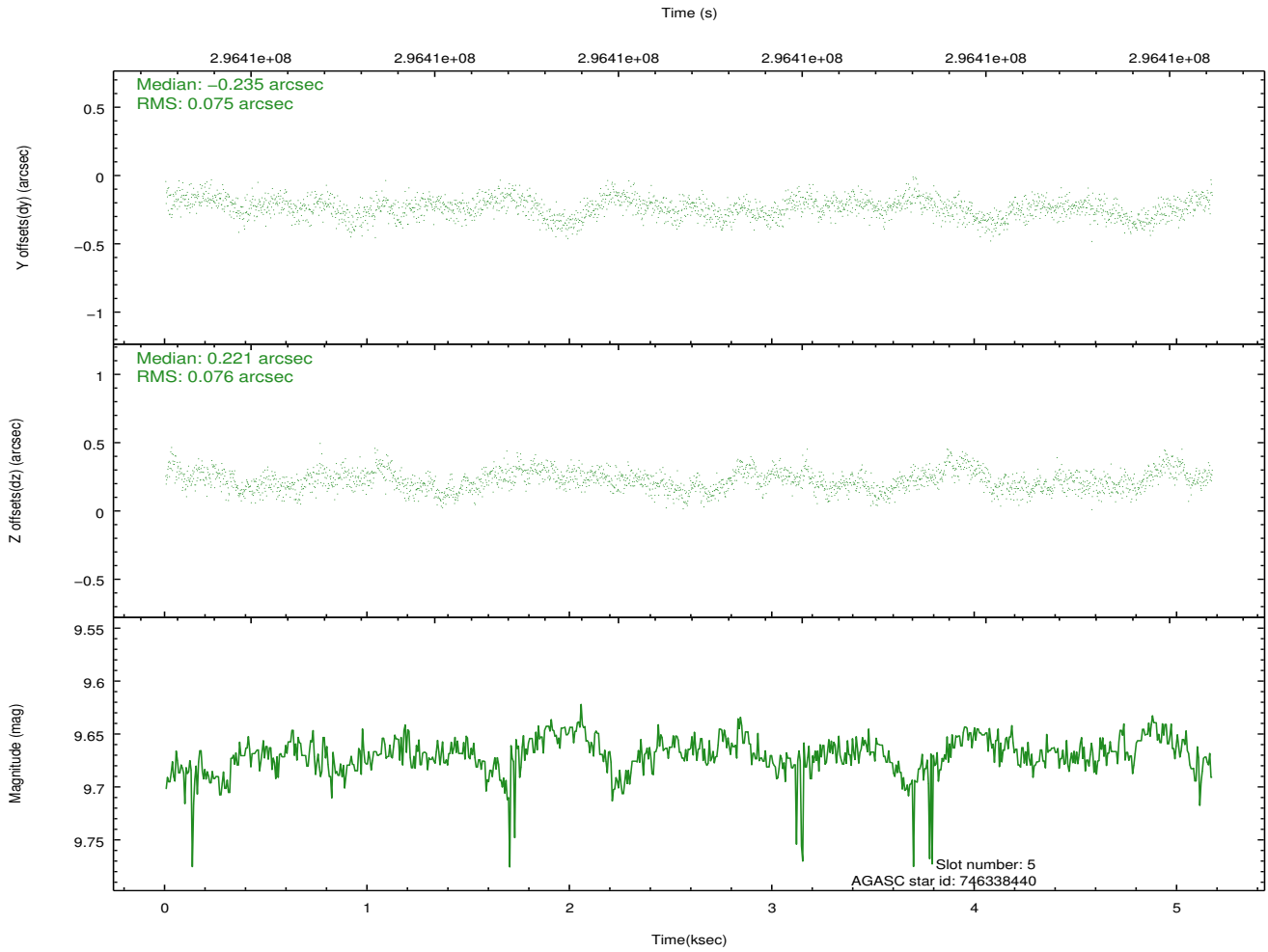
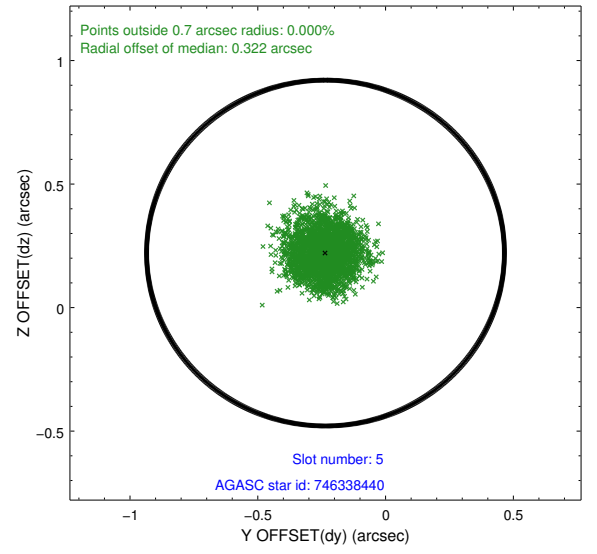
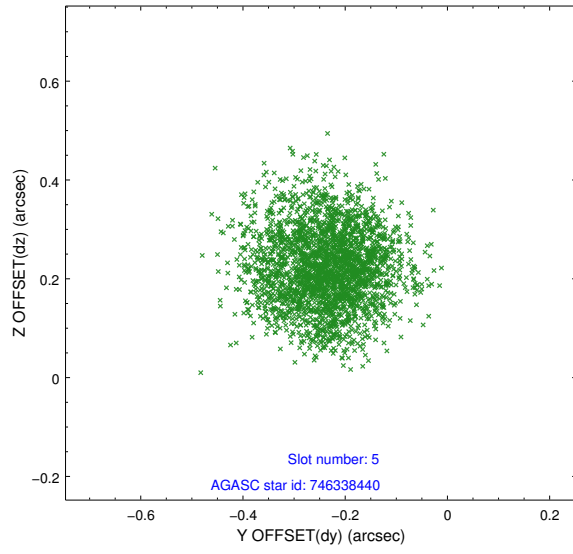
### 2.4.1 Slot 3



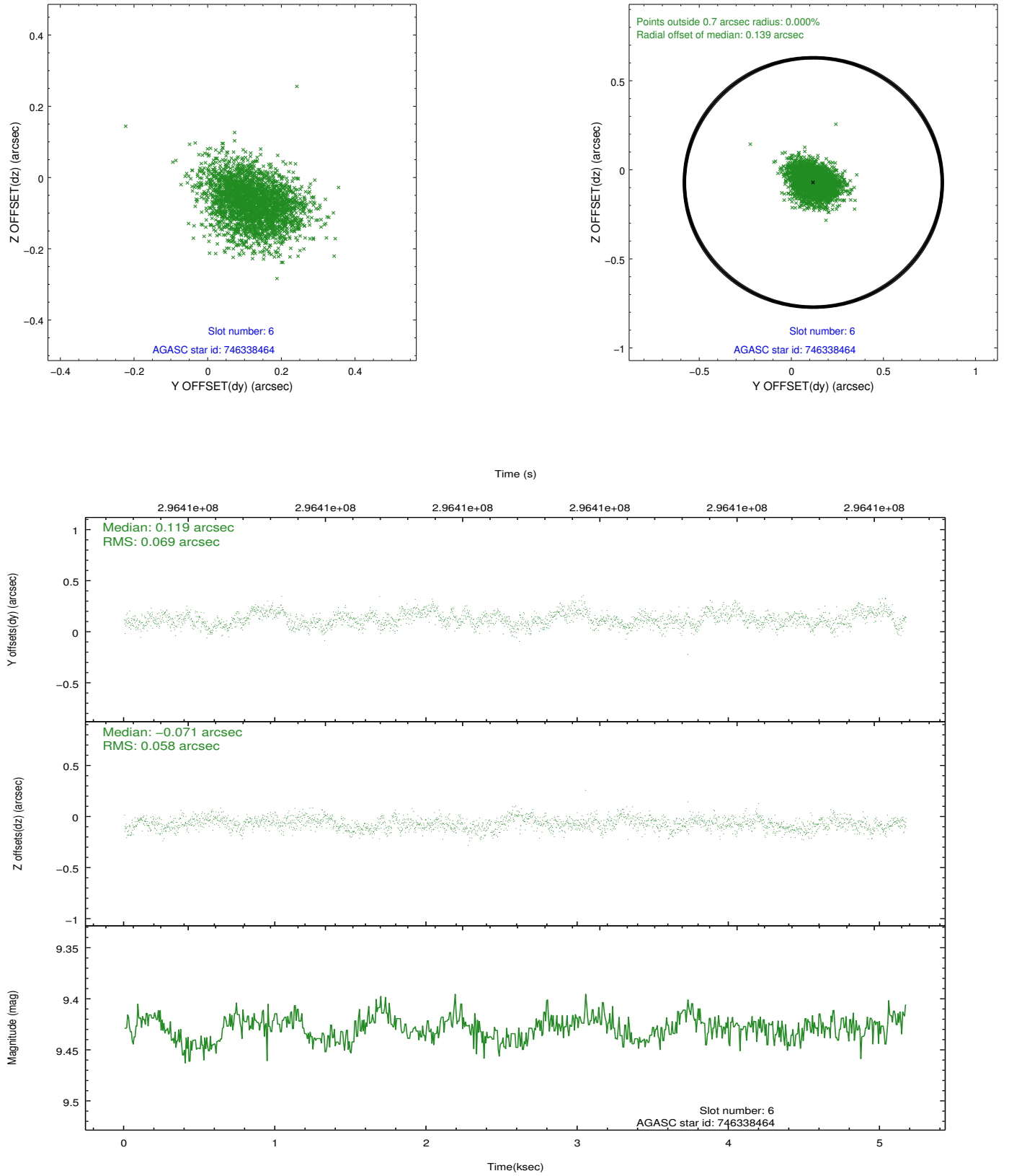
## 2.4.2 Slot 4



### 2.4.3 Slot 5

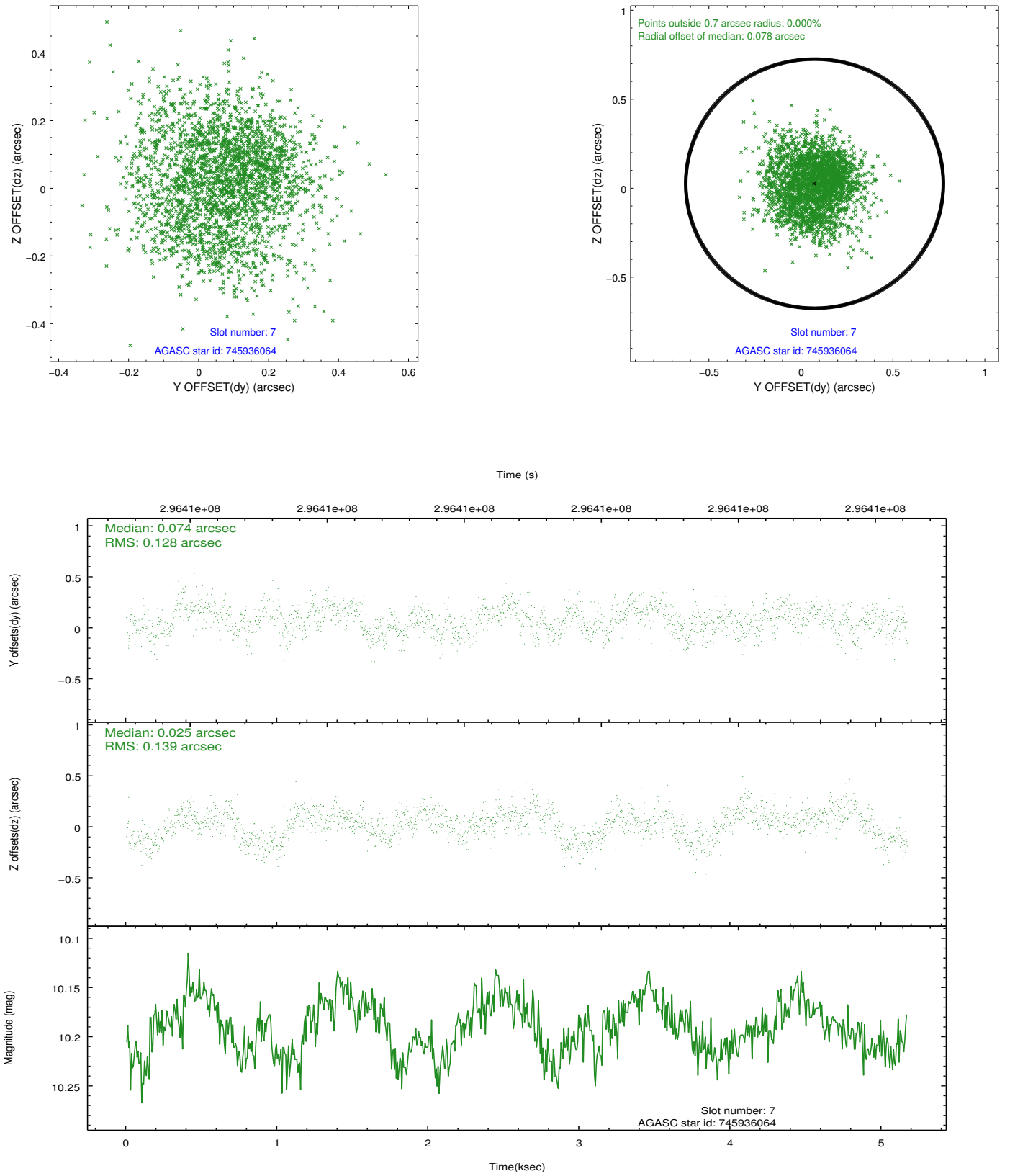


## 2.4.4 Slot 6



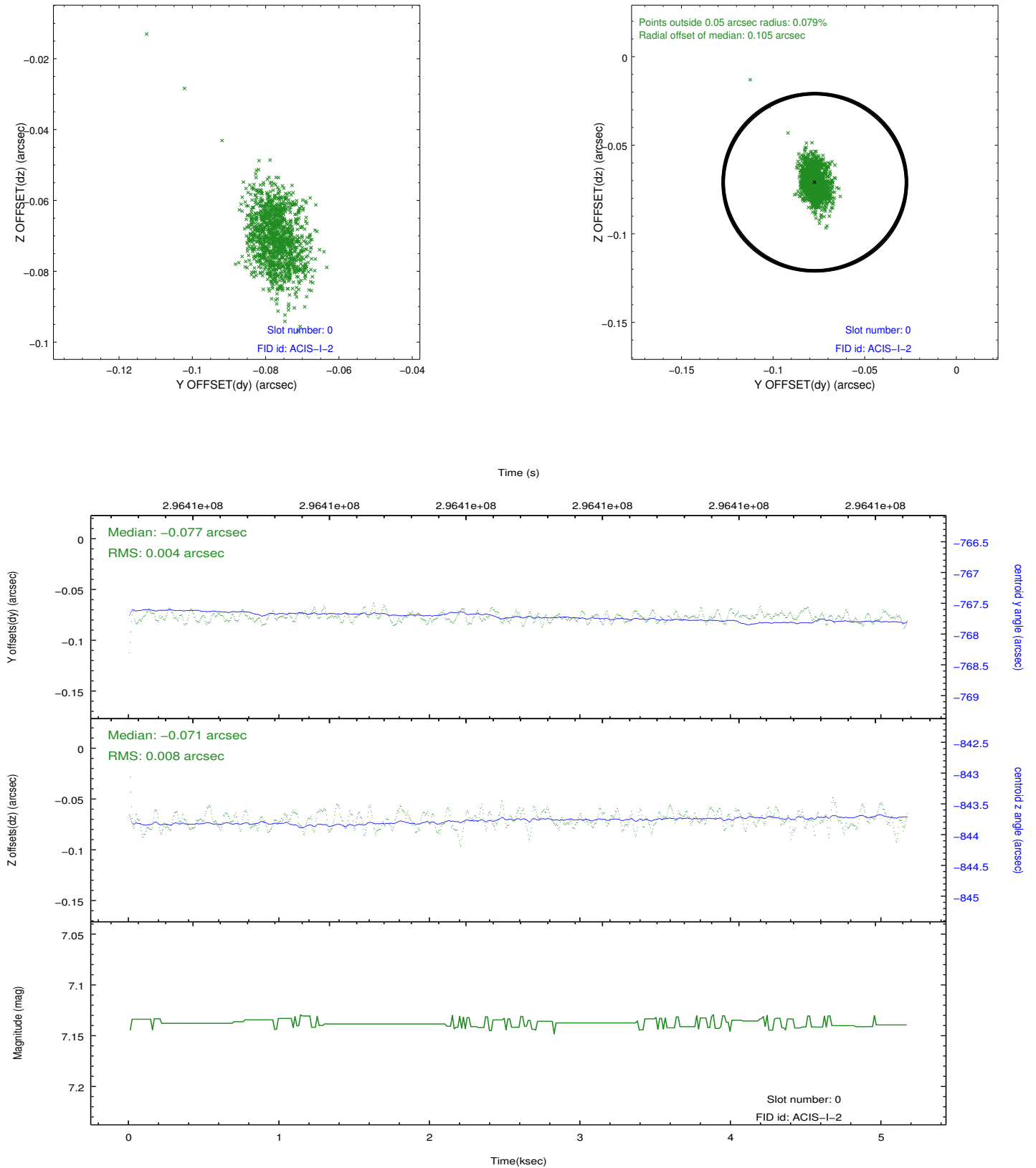


## 2.4.5 Slot 7

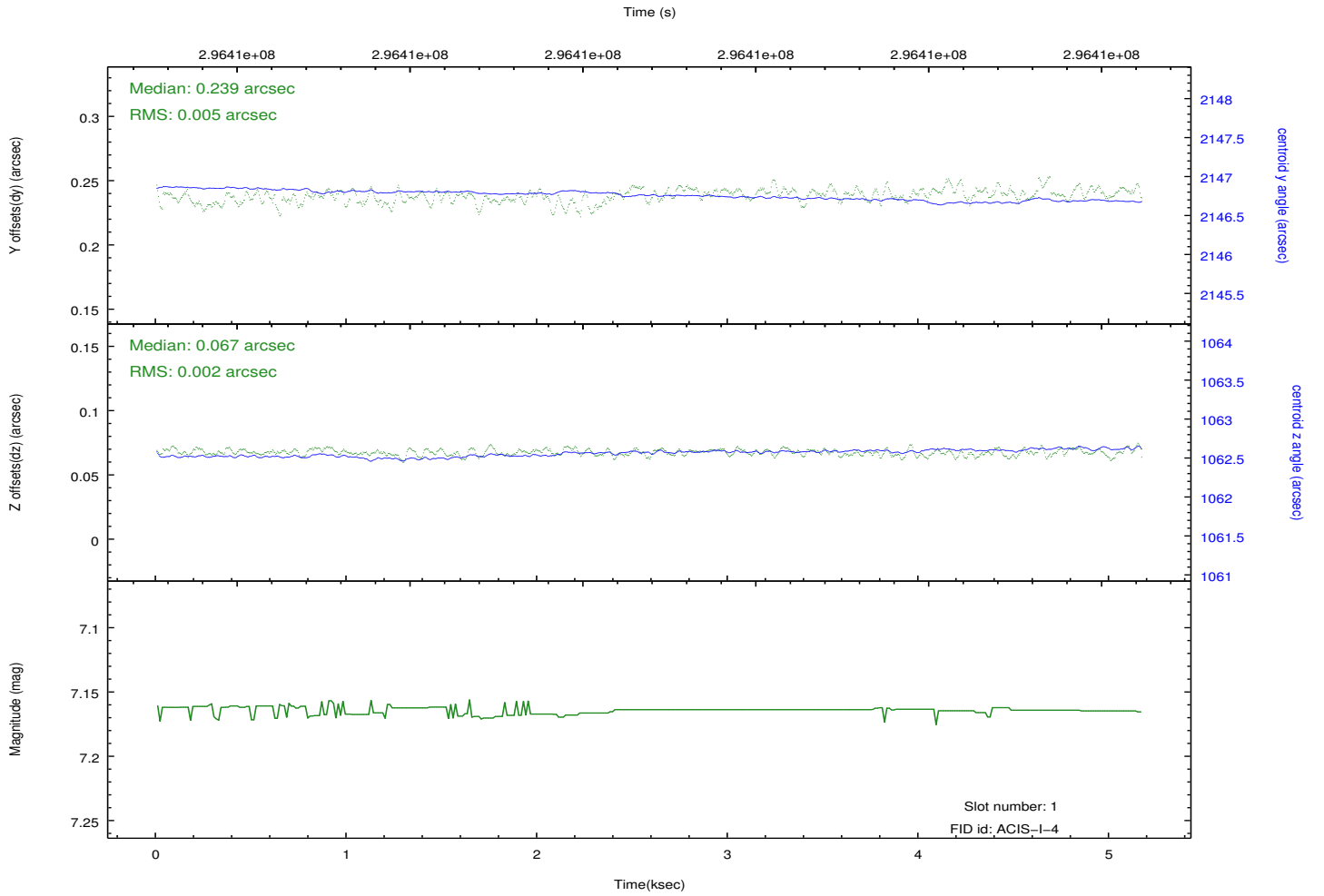
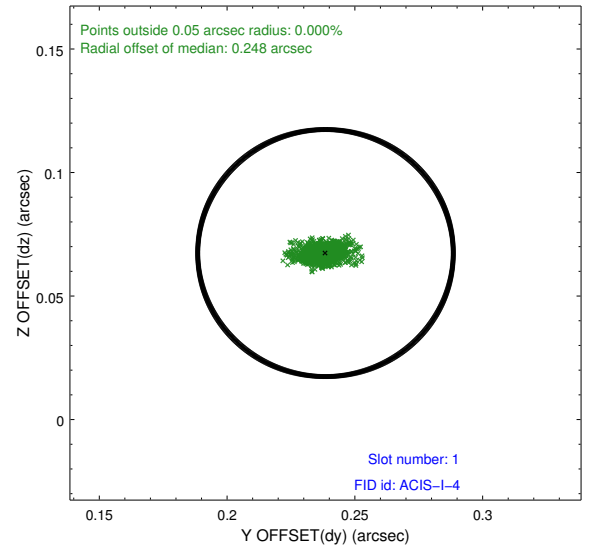
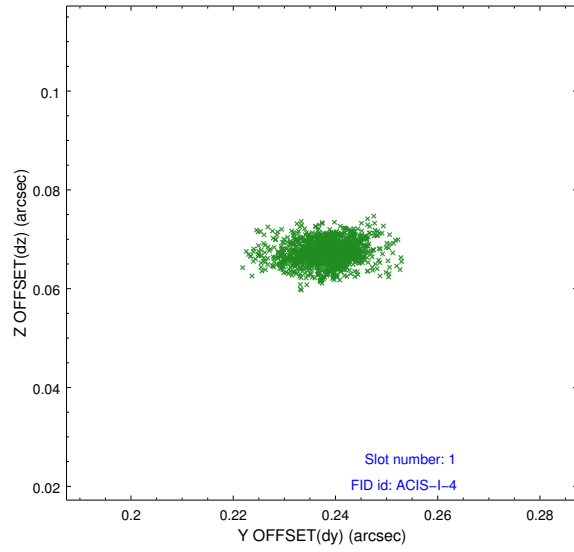


## 2.5 FID Slots

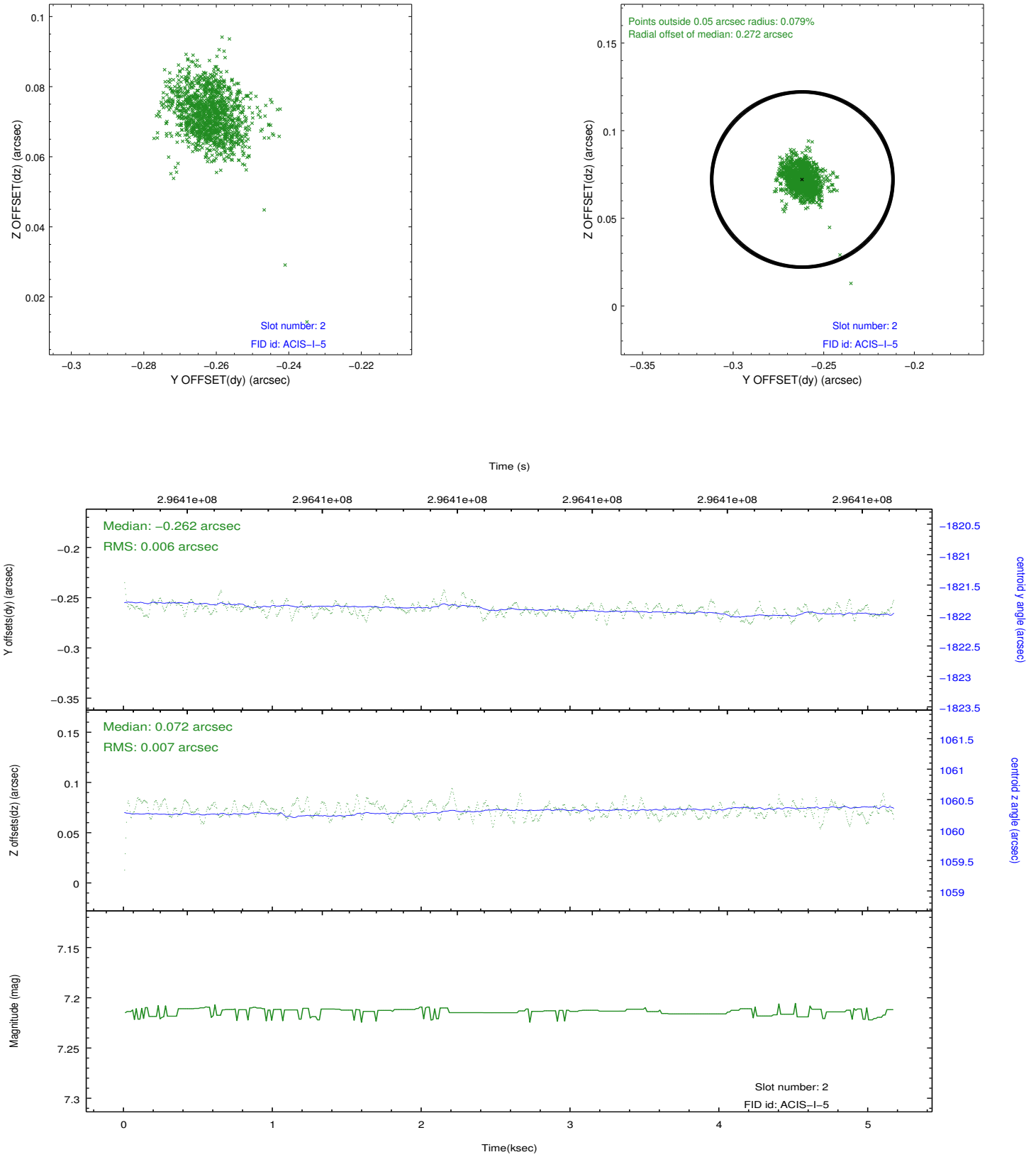
### 2.5.1 Slot 0



## 2.5.2 Slot 1



### 2.5.3 Slot 2



## A Summary

### A.1 Status

V&V Scientist	Joy Nichols
V&V Date (YYYY-MM-DD)	2012.04.25
V&V Edition	1
V&V Disposition and Status	OK
V&V Charge Time	5.16150003

### A.2 Comments