

V&V Reference Report

L2 ASCDS Version : 8.4.3

Observation 7030 - L2 Version 4
Chandra X-Ray Center

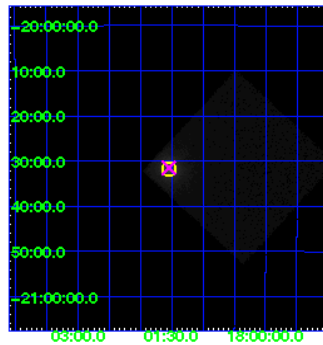
L2 Processing Date : Aug 10 2012

Contents

1	Front	2
2	OBI	3
2.1	OBI	3
2.1.1	Images	3
2.1.2	Parameters	4
2.1.3	Events	4
2.2	Compared Parameters	5
2.3	Aspect	6
2.4	Star Slots	9
2.4.1	Slot 3	9
2.4.2	Slot 4	10
2.4.3	Slot 5	11
2.4.4	Slot 6	12
2.4.5	Slot 7	13
2.5	FID Slots	14
2.5.1	Slot 0	14
2.5.2	Slot 1	15
2.5.3	Slot 2	16
A	Summary	17
A.1	Status	17
A.2	Comments	17

1 Front

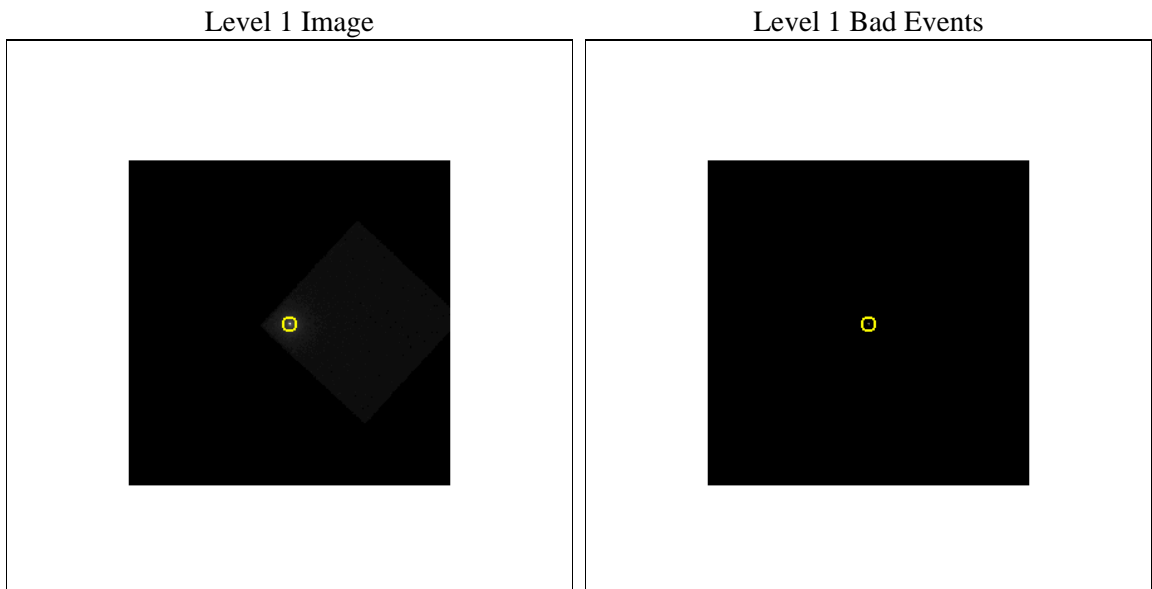
seq_num	900446	Sequence number
obs_id	7030	Observation id
title	High-Resolution X-ray Images of Dust Halos	Proposal title
observer	Dr. Randall Smith	Principal investigator
object	GX9+1	Source name
ra_targ	270.384583	Observer's specified target RA [deg]
dec_targ	-20.528889	Observer's specified target Dec [deg]
ra_nom	270.38624369327	Nominal RA [deg]
dec_nom	-20.525105061292	Nominal Dec [deg]
roll_nom	87.756961360339	Nominal Roll [deg]
revision	4	Processing version of data
ontime	5167.2814900279	[s]
livetime	5088.9045154729	Ontime multiplied by DTCOR
l2events	723257	Number of level 2 events



2 OBI

2.1 OBI

2.1.1 Images



2.1.2 Parameters

obi_num	0	Obi number	sched_exp_time	5000.000000	[s] Scheduled observation exposure time
ascdsver	8.4.5	Processing system revision	ontime	5167.2814900279	[s]
caldbver	4.5.1.1	 	l1events	886837	Number of level 1 events
date	2012-08-11T00:37:59	Date and time of file creation			
revision	4	Processing version of data			

2.1.3 Events

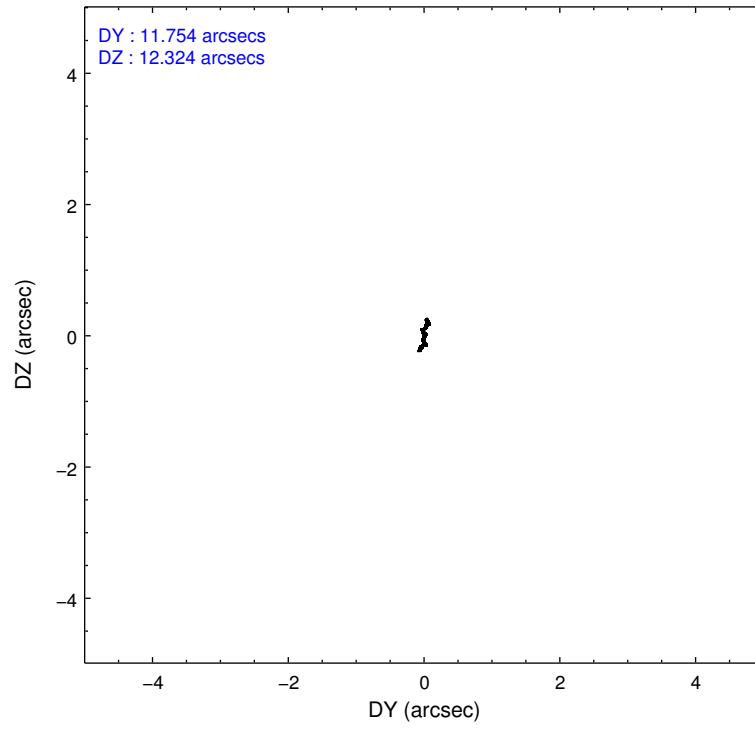
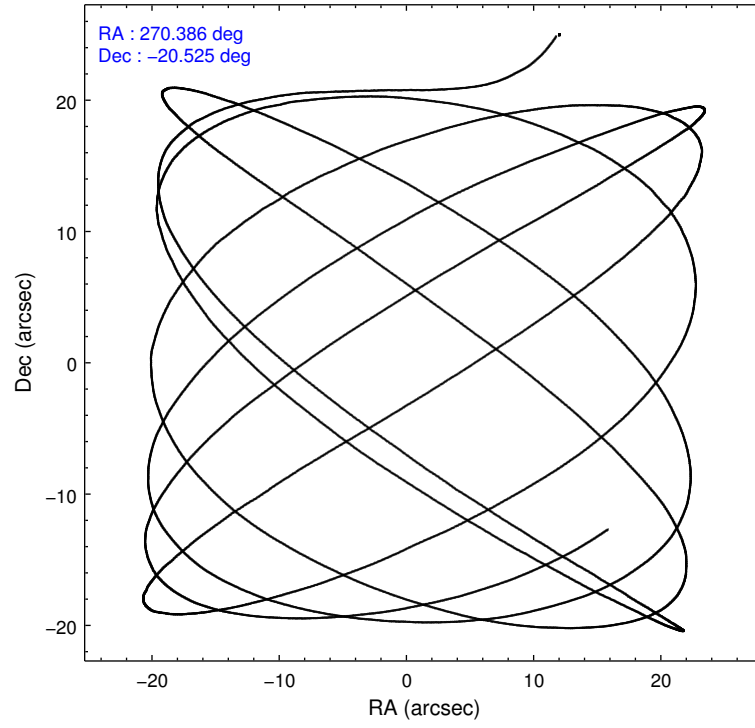
Level 1 Events

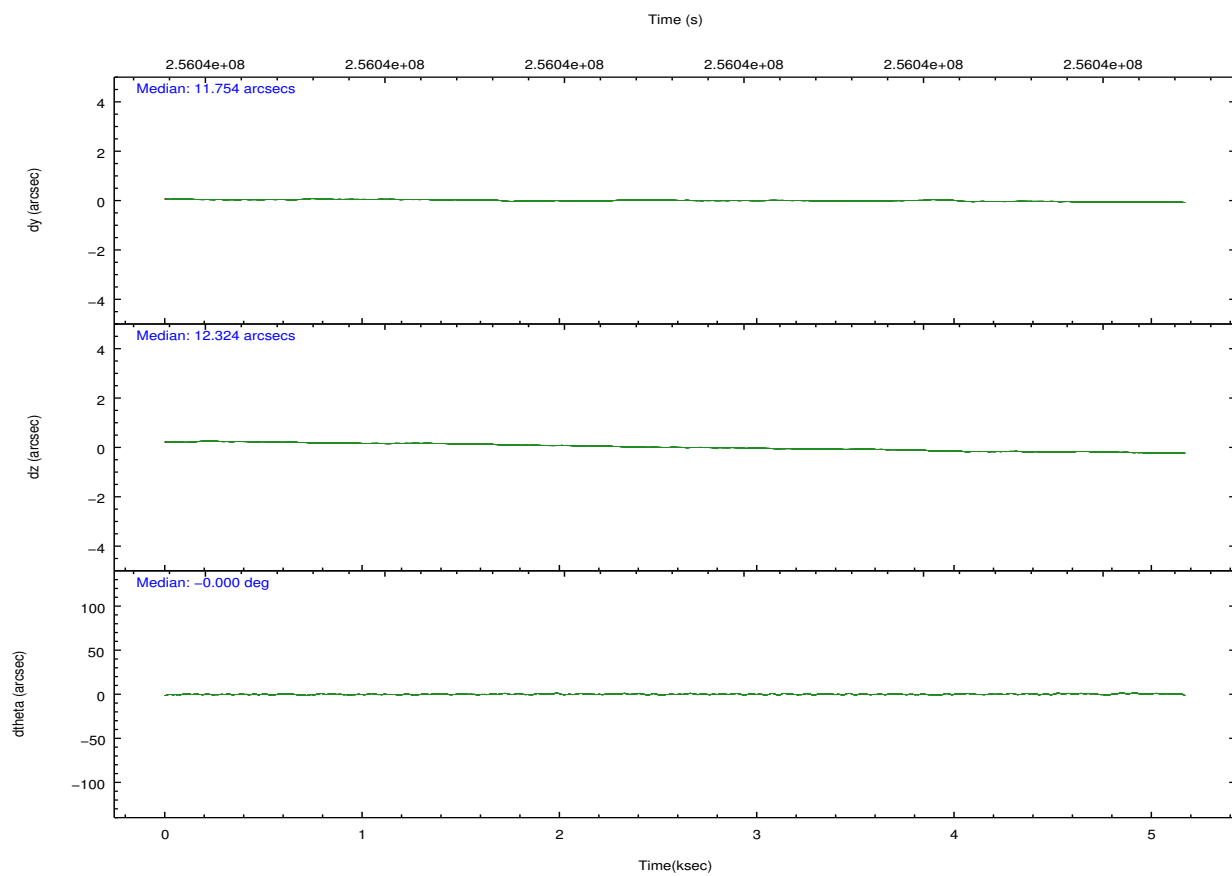
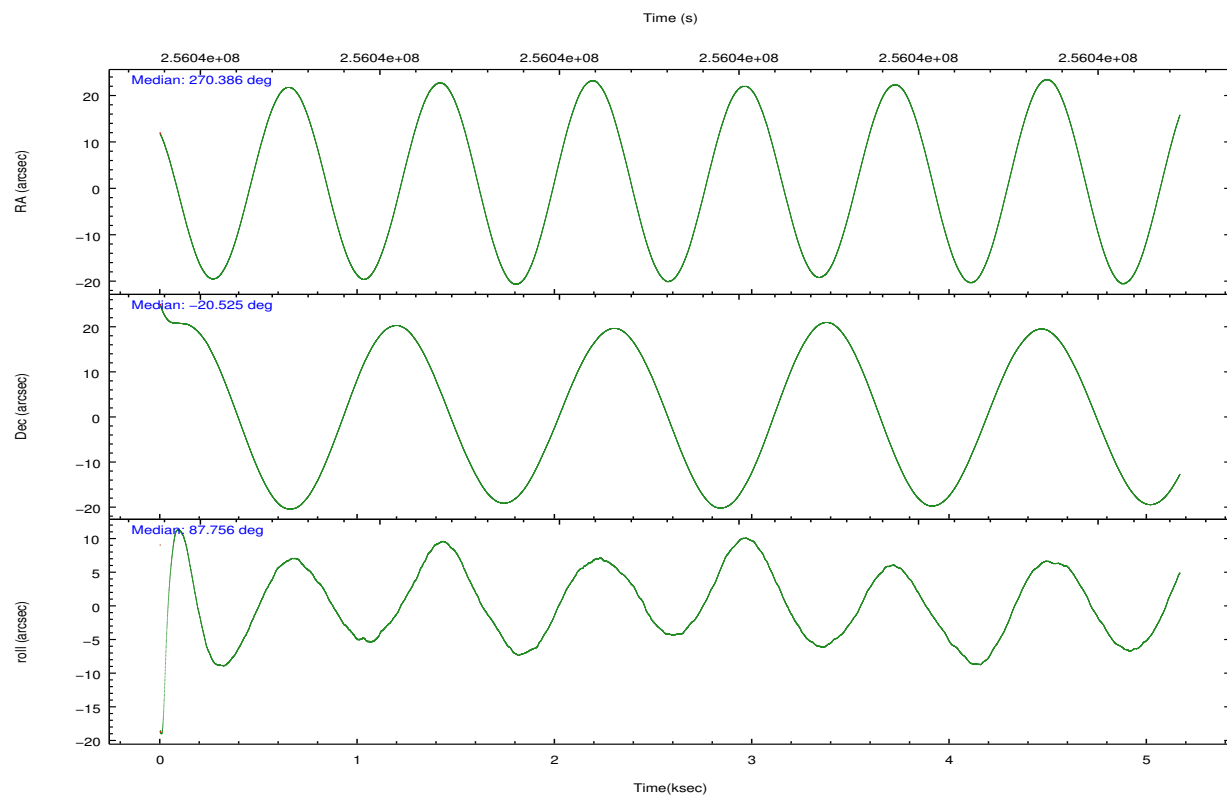
	segment 0
level 1 events	886837
rejected events	30716
rejected %	3%

2.2 Compared Parameters

Parameter	Planned	Actual	Parameter	Planned	Actual
Instrument	HRC	HRC	Obspar format version number	7	7
Detector	HRC-I	HRC-I	Obspar file type	PREDICTED	ACTUAL
Grating	NONE	NONE	Obspar update status	NONE	UPDATED
Data mode	OBSERVING	OBSERVING			
Observation mode	POINTING	POINTING			
[deg] Pointing RA	270.400529	270.3862436932744			
[deg] Pointing Dec	-20.548796	-20.52510506129206			
[deg] Pointing Roll	87.857577	87.7569613603393			
[mm] SIM focus pos	-1.040293	-1.038866356238299			
[mm] SIM defocus	0	0.001426264420575141			
[mm] SIM translation stage pos	79.985494	79.99545563443296			
[mm] SIM translation stage offset	47	46.99003325716861			
[s] Observation start time (MET)	256040203.184000	256039264.51937			
Observation start date	2006-02-11T10:15:38	2006-02-11T10:01:04			
[s] Observation end time (MET)	256045203.184000	256045464.23216			
Observation end date	2006-02-11T11:38:58	2006-02-11T11:44:24			

2.3 Aspect



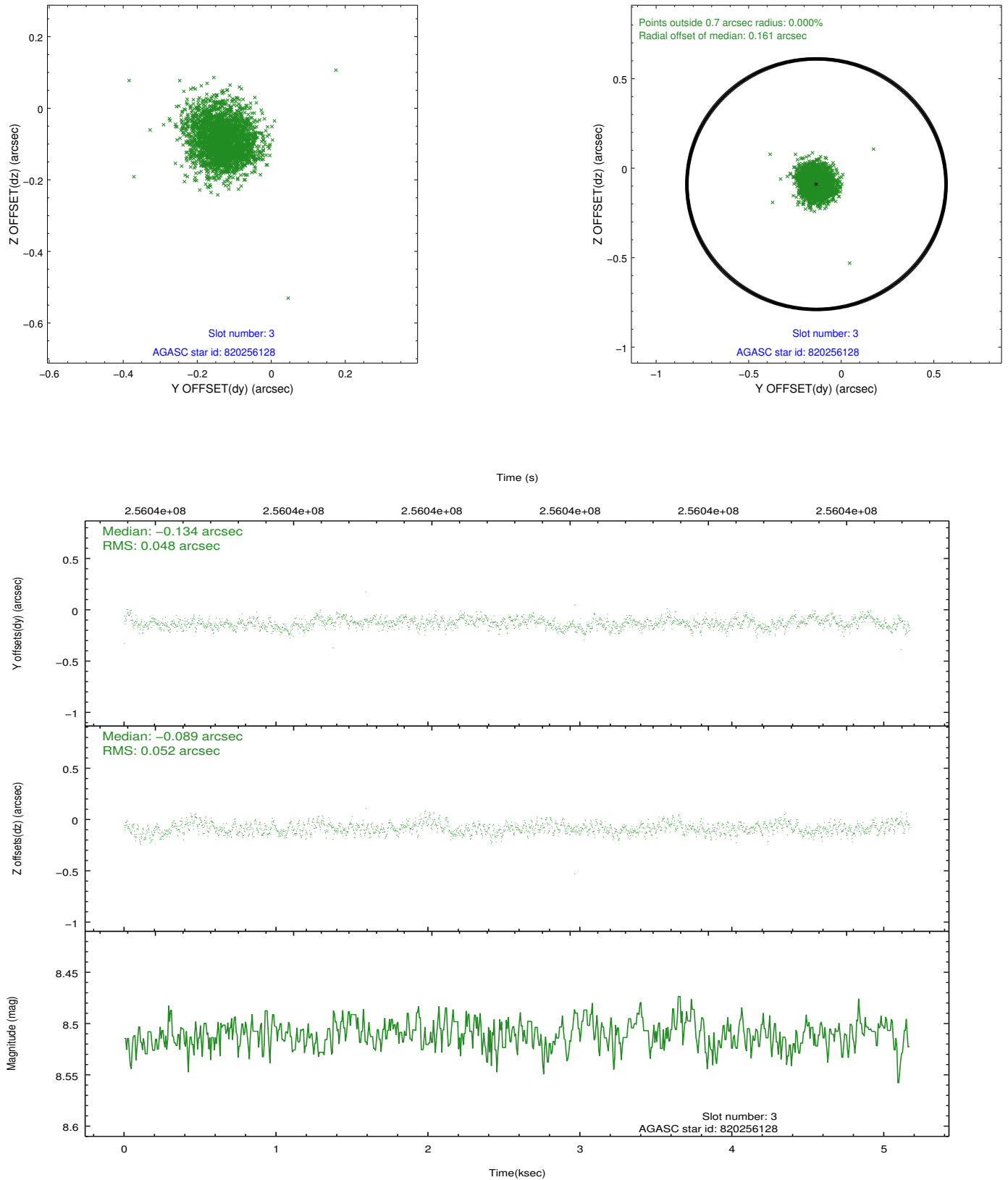


Slot Statistics

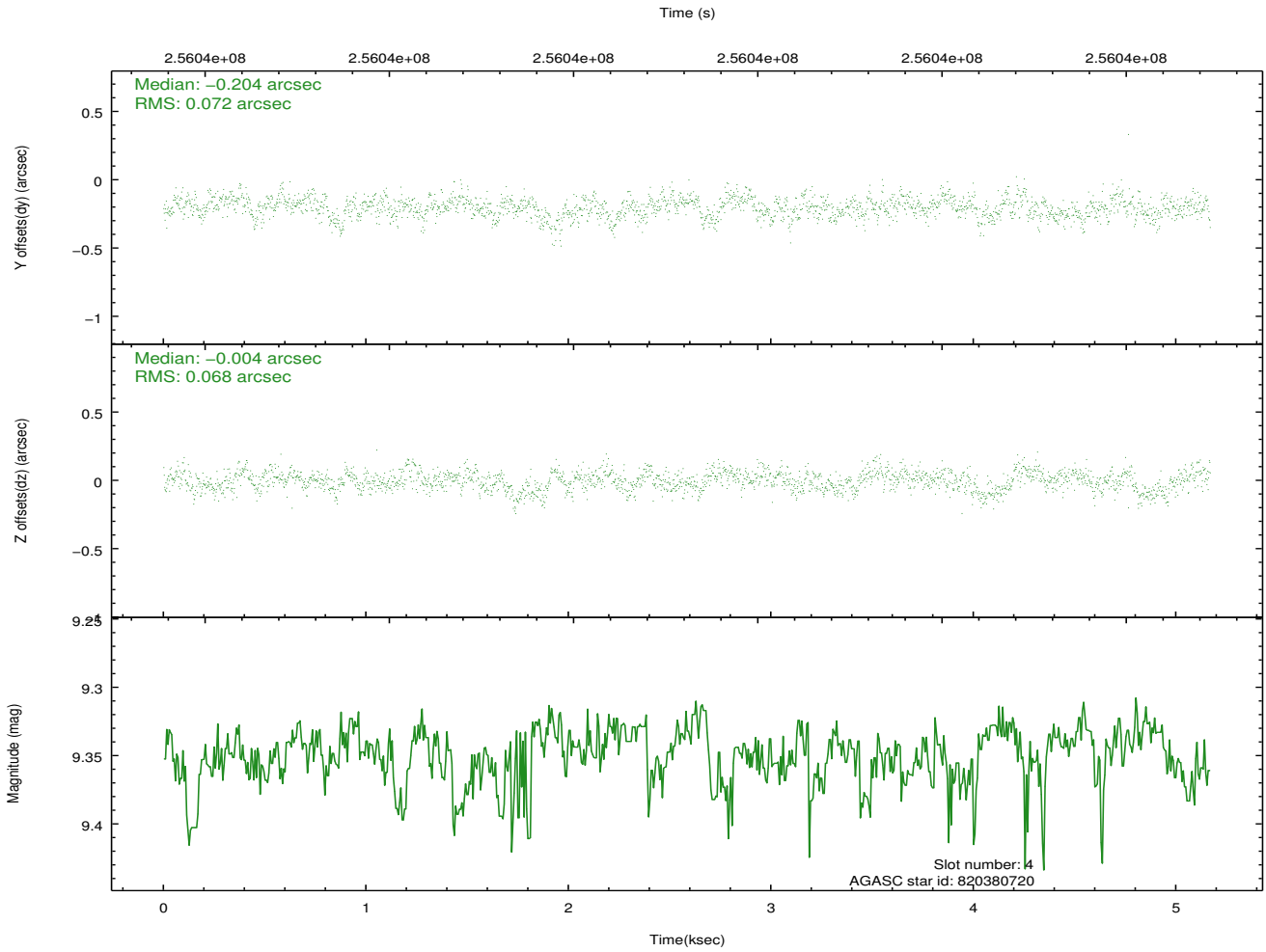
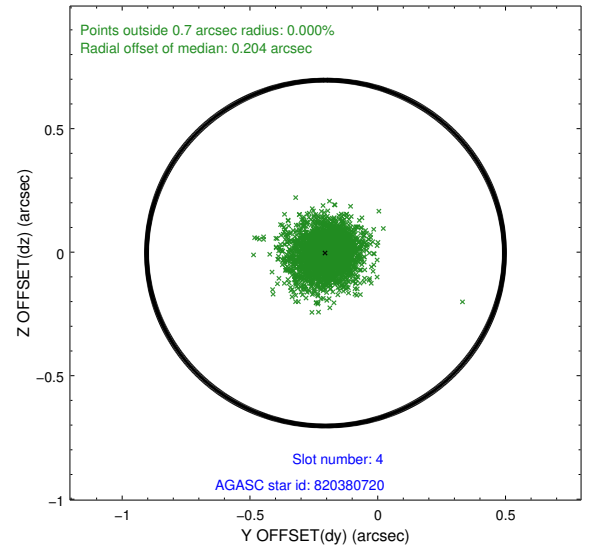
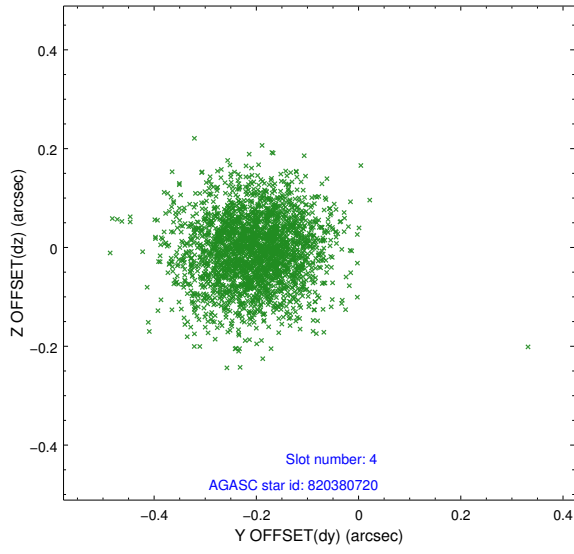
slot	status	id	mag	n_pts	med_dy	med_dz	dr1	dr2	ra	dec	mean_y	mean_z
0	FID	HRC-I-1	7.06	1261	0.026	-0.163	0.009	0.015	0.000000	0.000000	-765.53	-339.68
1	FID	HRC-I-2	7.17	1261	-0.172	0.256	0.008	0.014	0.000000	0.000000	843.56	-335.72
2	FID	HRC-I-3	7.08	1261	0.267	-0.178	0.008	0.014	0.000000	0.000000	-1196.21	1969.63
3	GUIDE	820256128	8.51	2521	-0.134	-0.089	0.075	0.118	269.765287	-20.062383	1665.31	2211.29
4	GUIDE	820380720	9.35	2512	-0.204	-0.004	0.104	0.172	270.209065	-19.908428	2279.61	734.15
5	GUIDE	820776344	7.32	2522	0.188	-0.060	0.065	0.107	269.882096	-21.045657	-1854.35	1673.25
6	GUIDE	820904528	8.77	2521	0.079	0.006	0.072	0.118	270.240063	-20.988108	-1601.49	479.86
7	GUIDE	820927824	7.16	2521	0.069	0.147	0.066	0.107	270.655496	-20.737630	-648.43	-883.56

2.4 Star Slots

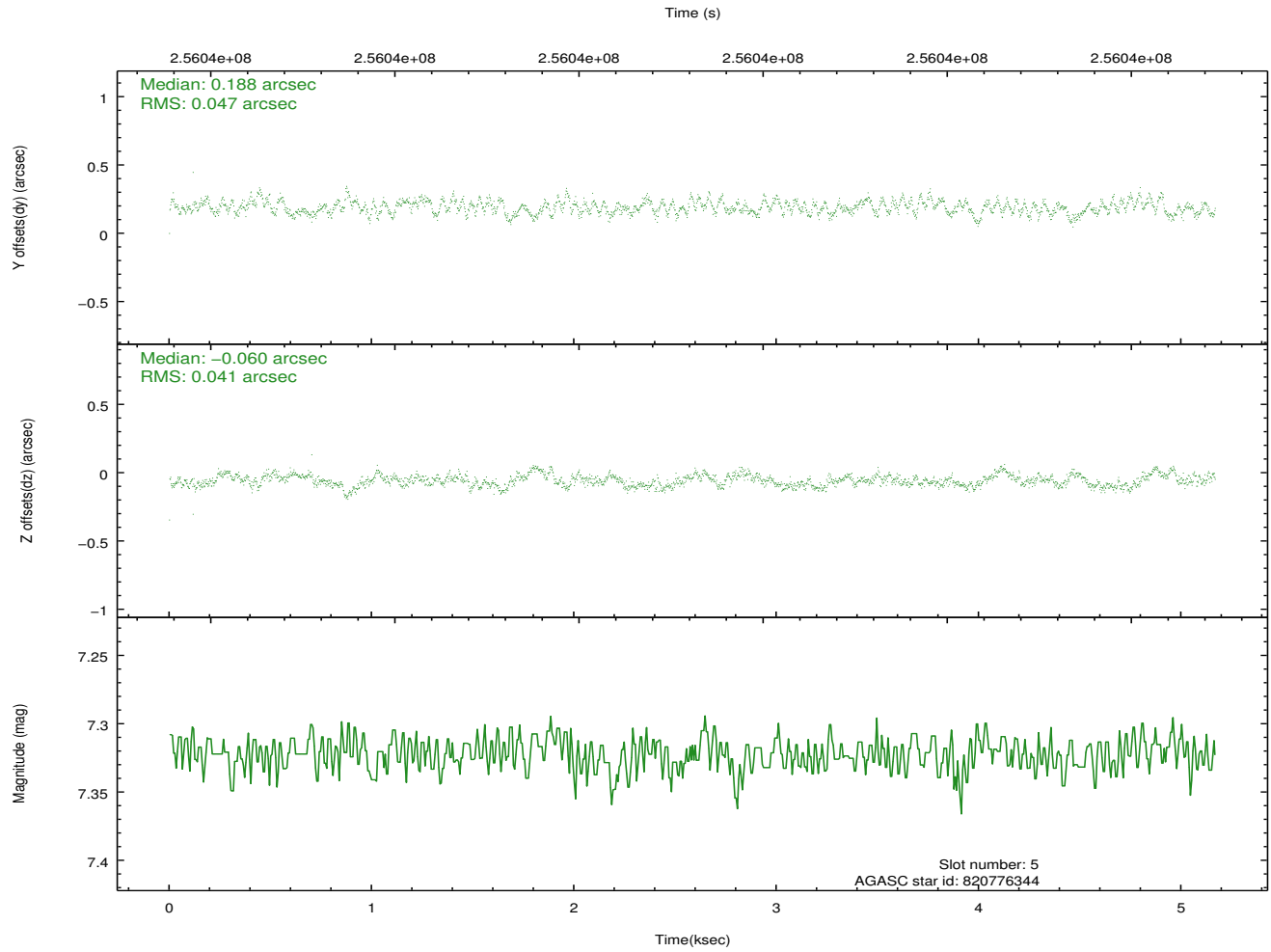
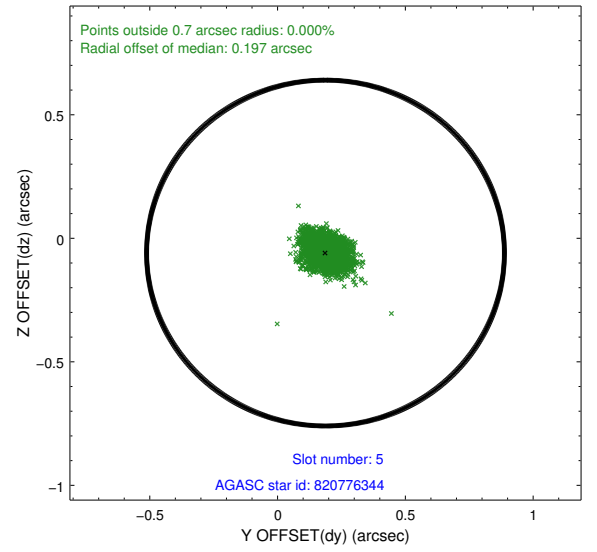
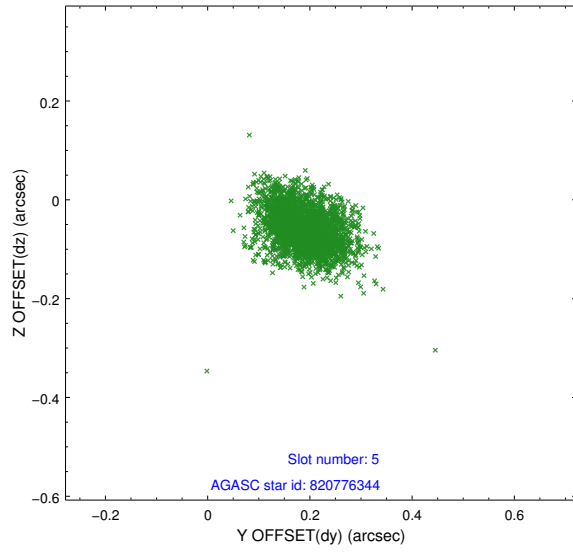
2.4.1 Slot 3



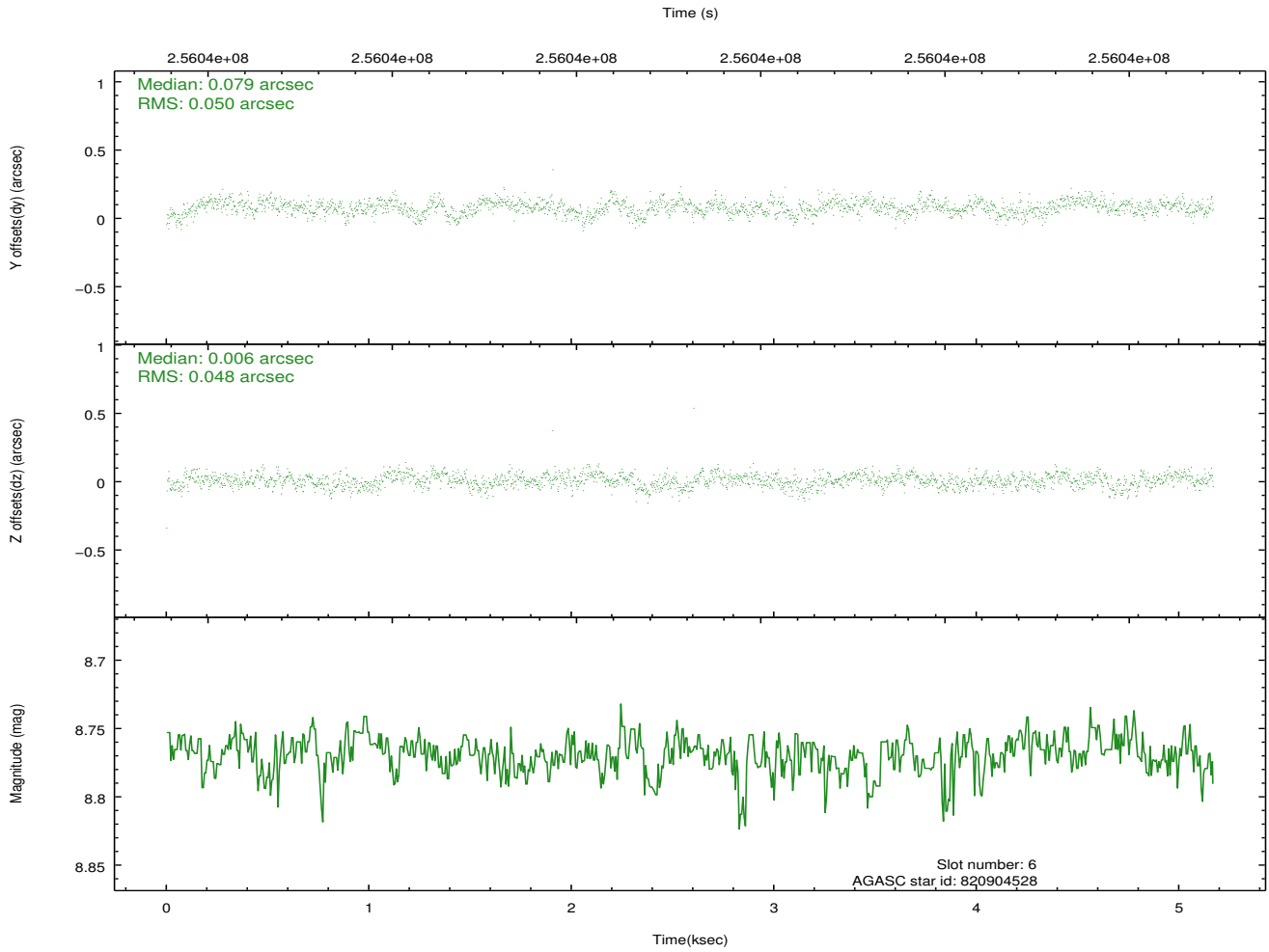
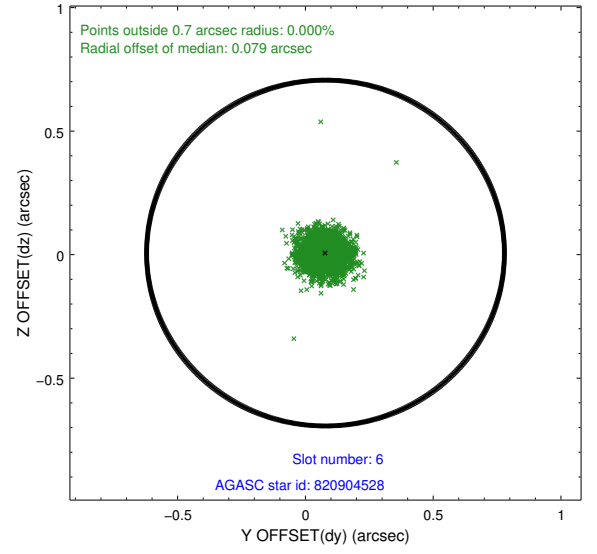
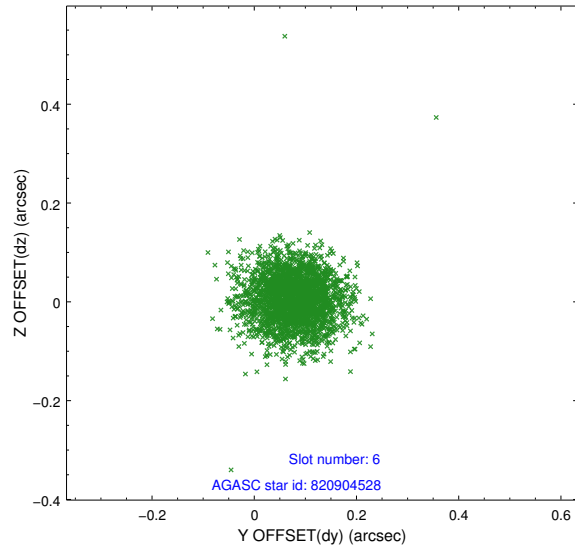
2.4.2 Slot 4



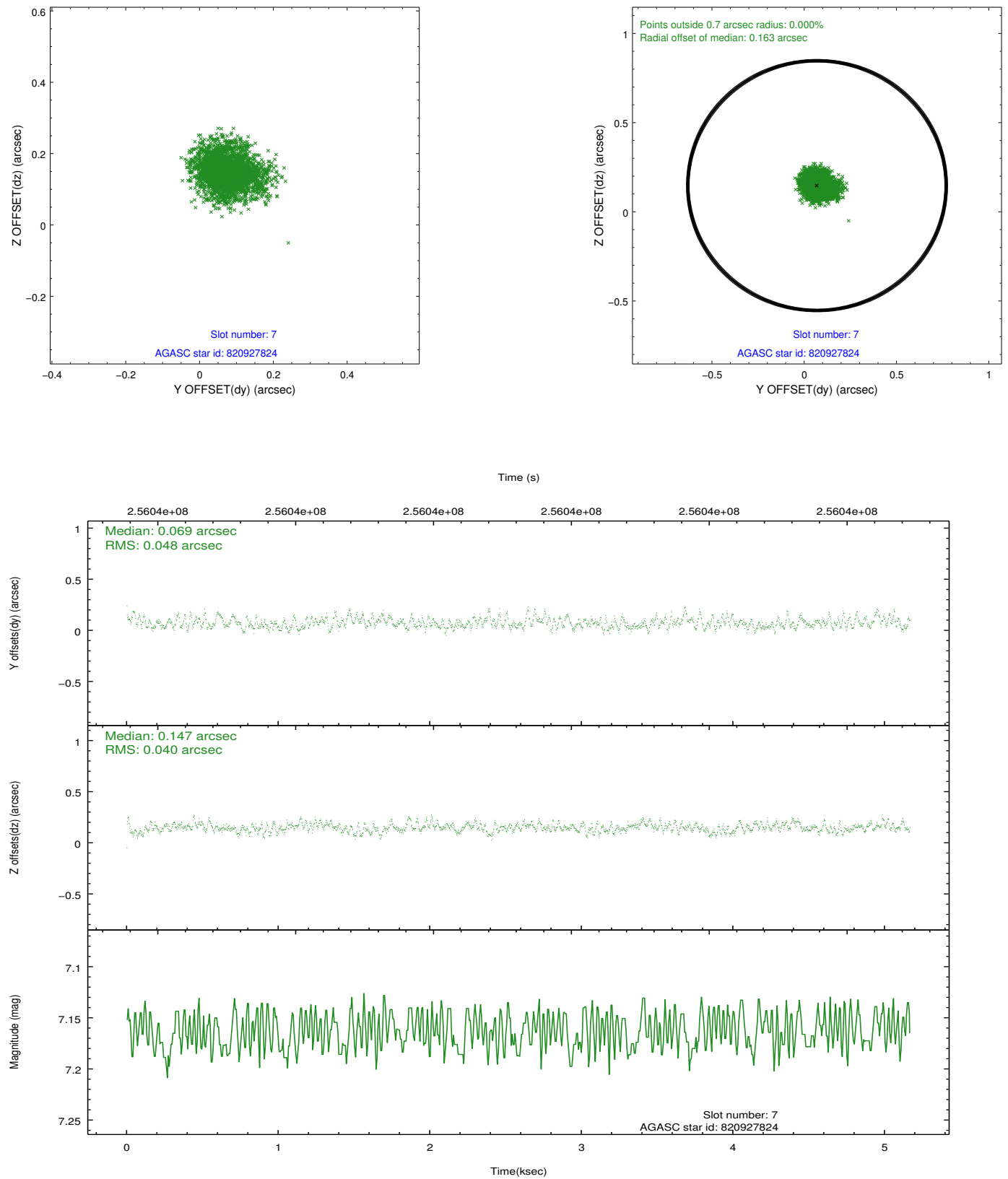
2.4.3 Slot 5



2.4.4 Slot 6

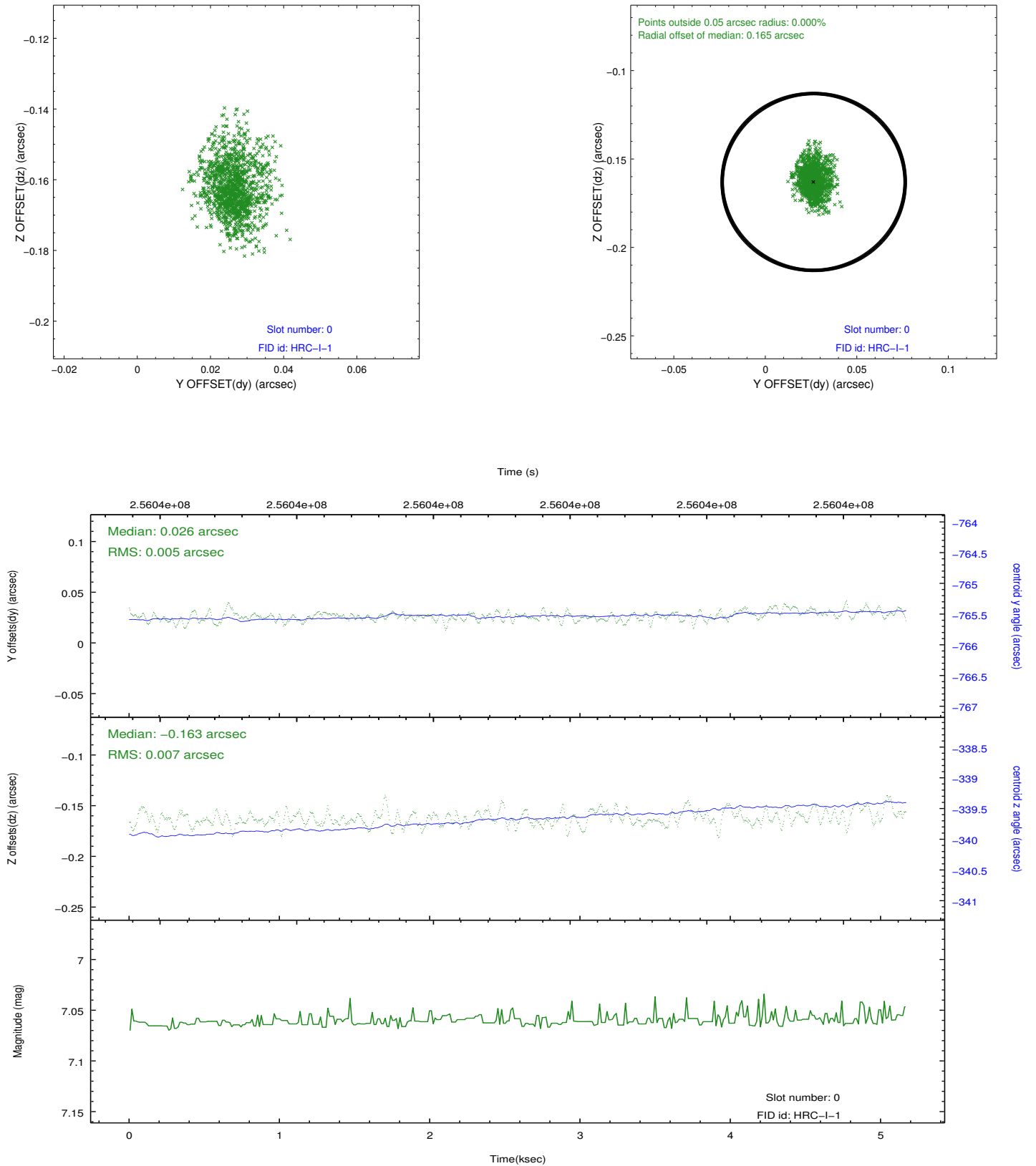


2.4.5 Slot 7

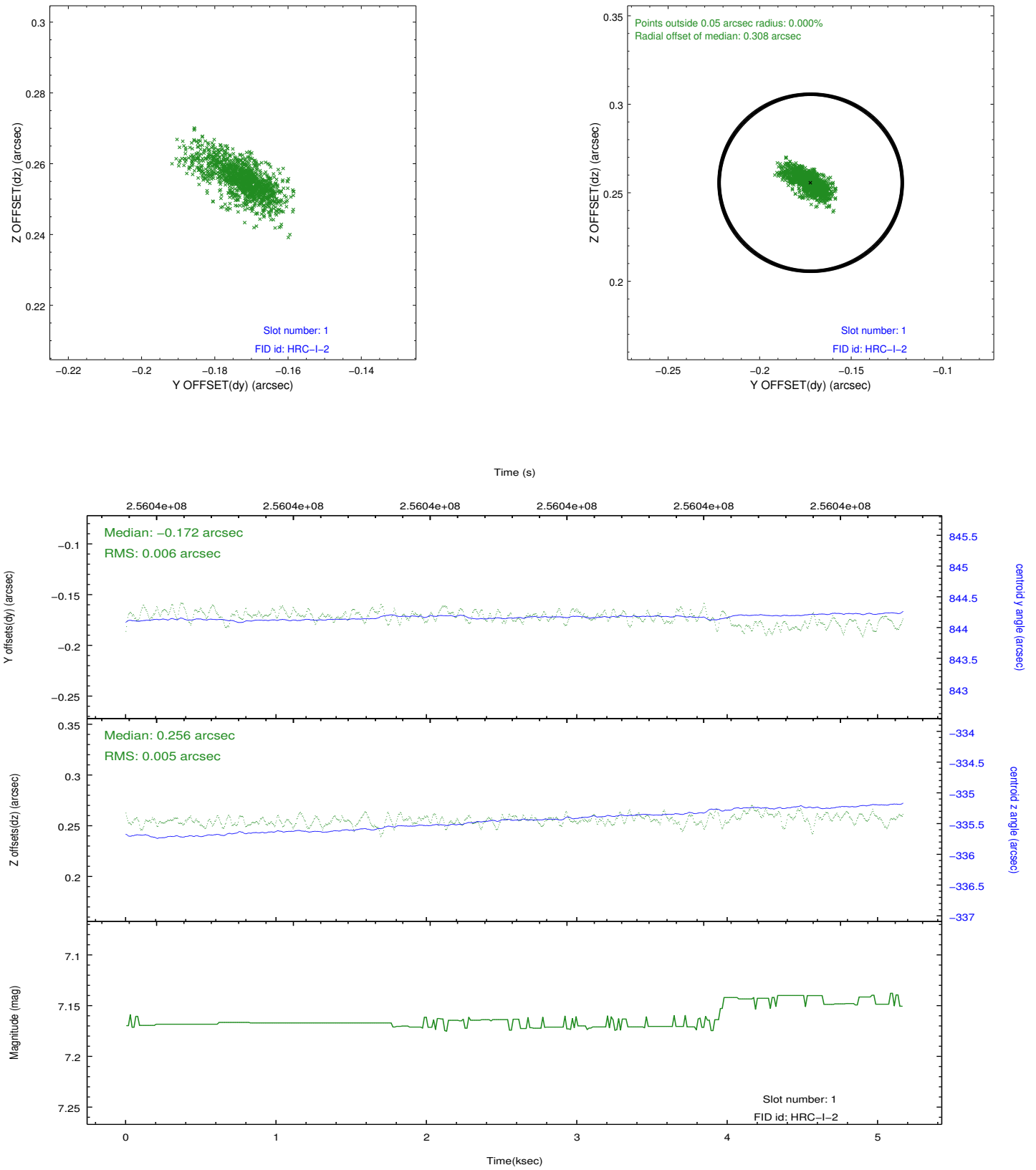


2.5 FID Slots

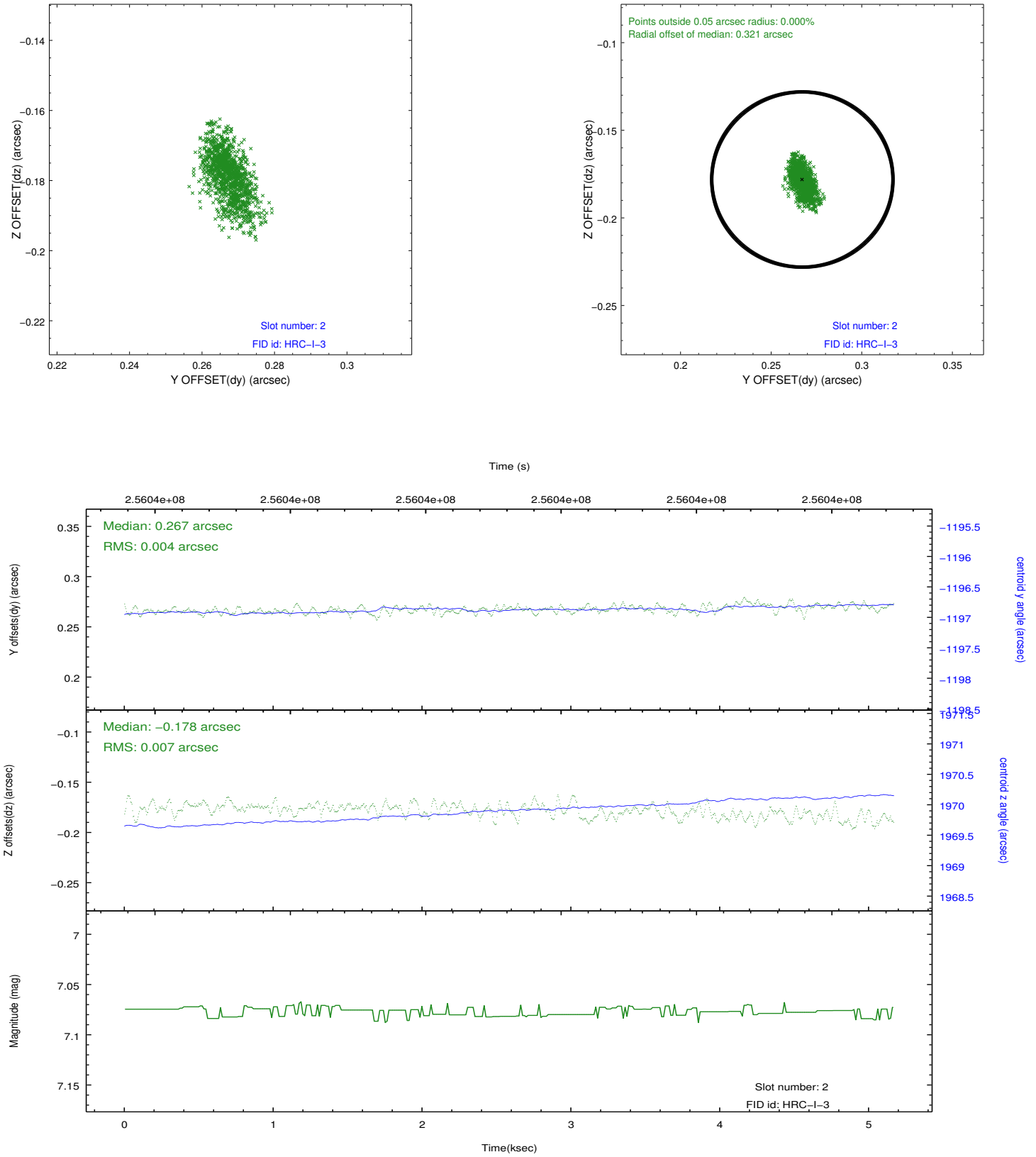
2.5.1 Slot 0



2.5.2 Slot 1



2.5.3 Slot 2



A Summary

A.1 Status

V&V Scientist	Jen Lauer
V&V Date (YYYY-MM-DD)	2012.08.12
V&V Edition	1
V&V Disposition and Status	OK
V&V Charge Time	5.16728148

A.2 Comments