

V&V Reference Report

L2 ASCDS Version : 8.4.3.1

Observation 7000 - L2 Version 2
Chandra X-Ray Center

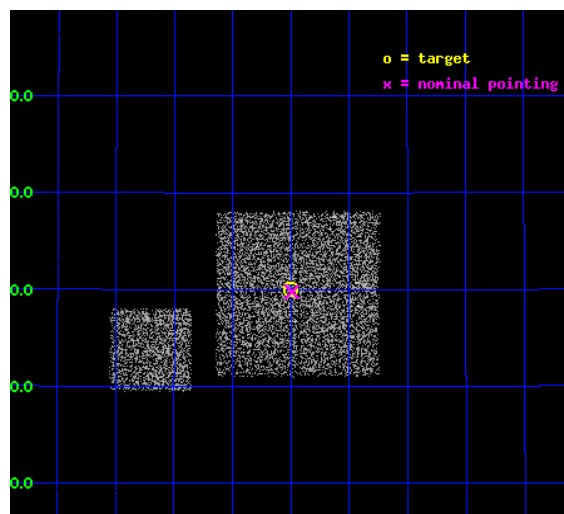
L2 Processing Date : Apr 7 2012

Contents

1	Front	2
2	OBI	3
2.1	OBI	3
2.1.1	Images	3
2.1.2	Bias	3
2.1.3	Parameters	4
2.1.4	Events	4
2.2	Compared Parameters	5
2.3	Aspect	6
2.4	Star Slots	9
2.4.1	Slot 3	9
2.4.2	Slot 4	10
2.4.3	Slot 5	11
2.4.4	Slot 6	12
2.4.5	Slot 7	13
2.5	FID Slots	14
2.5.1	Slot 0	14
2.5.2	Slot 1	15
2.5.3	Slot 2	16
A	Summary	17
A.1	Status	17
A.2	Comments	17

1 Front

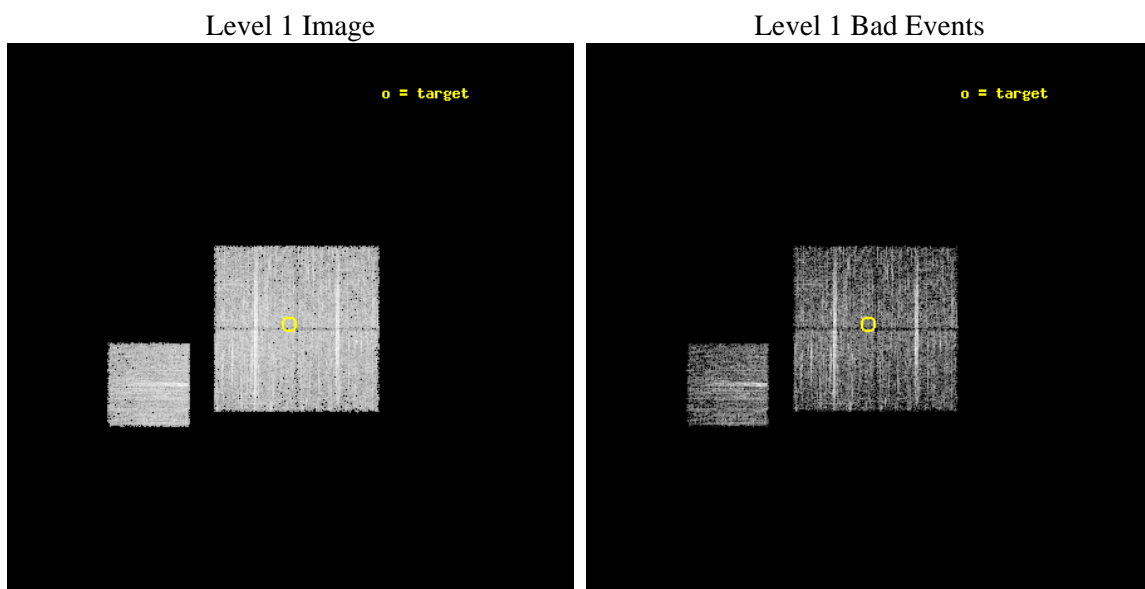
seq_num	900416	Sequence number
obs_id	7000	Observation id
title	Chandra Large Scale Survey of the NOAO Bootes Deep Field (A)	Propo
observer	Dr Stephen Murray	Principal investigator
object	Bootes2 22	Source name
dtcycle	0	
cycle	P	events from which exps? Prim/Second/Both
ra_targ	217.37524	Observer's specified target RA [deg]
dec_targ	35.500662	Observer's specified target Dec [deg]
ra_nom	217.37303361442	Nominal RA [deg]
dec_nom	35.496450412921	Nominal Dec [deg]
roll_nom	270.20994540744	Nominal Roll [deg]
revision	2	Processing version of data
ontime	4476.4000344276	Sum of GTIs [s]
livetime	4417.9125725001	Livetime [s]
ontime0	4473.2590342164	Sum of GTIs [s]
ontime1	4476.4000344276	Sum of GTIs [s]
ontime2	4476.4000344276	Sum of GTIs [s]
ontime3	4476.4000344276	Sum of GTIs [s]
ontime6	4476.3942104578	Sum of GTIs [s]
l2events	12968	Number of level 2 events



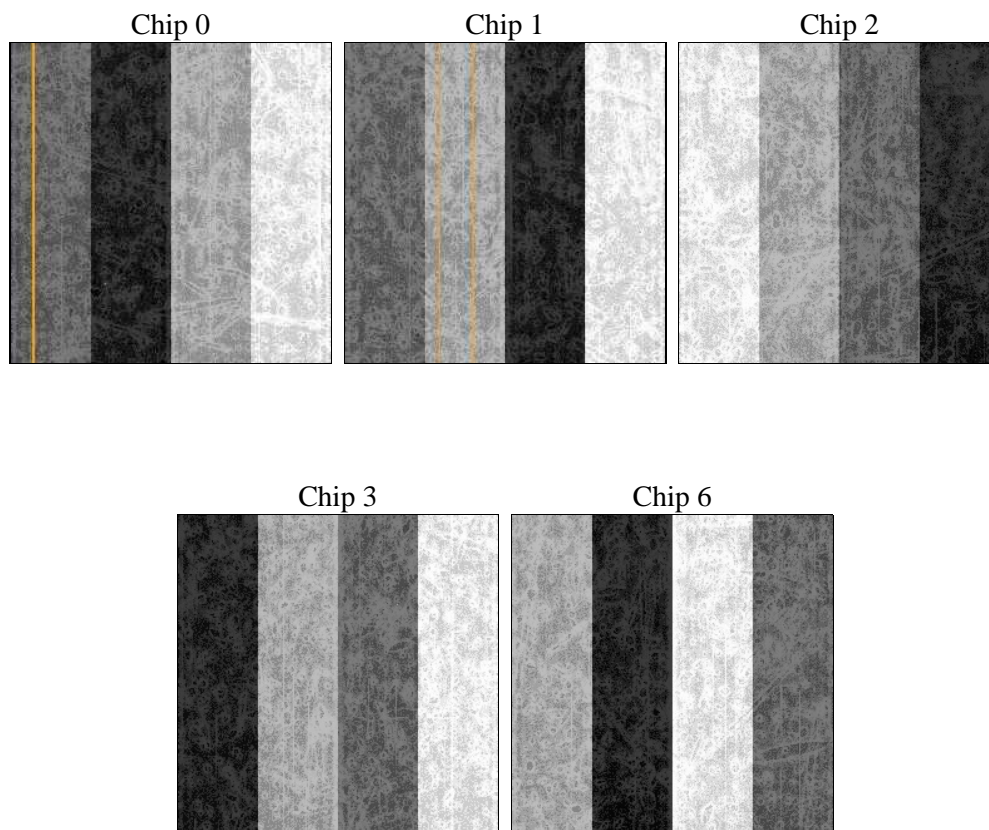
2 OBI

2.1 OBI

2.1.1 Images



2.1.2 Bias



2.1.3 Parameters

obi_num	0	Obi number	sched_exp_time	4700.000000	[s] Scheduled observation exposure time
ascdsver	8.4.3.1	Processing system revision	ontime	4476.4000344276	Sum of GTIs [s]
caldsver	4.4.9	 	ontime0	4473.2590342164	Sum of GTIs [s]
date	2012-04-07T09:03:28	Date and time of file creation	ontime1	4476.4000344276	Sum of GTIs [s]
revision	2	Processing version of data	ontime2	4476.4000344276	Sum of GTIs [s]
			ontime3	4476.4000344276	Sum of GTIs [s]
			ontime6	4476.3942104578	Sum of GTIs [s]
			l1events	160208	Number of level 1 events

2.1.4 Events

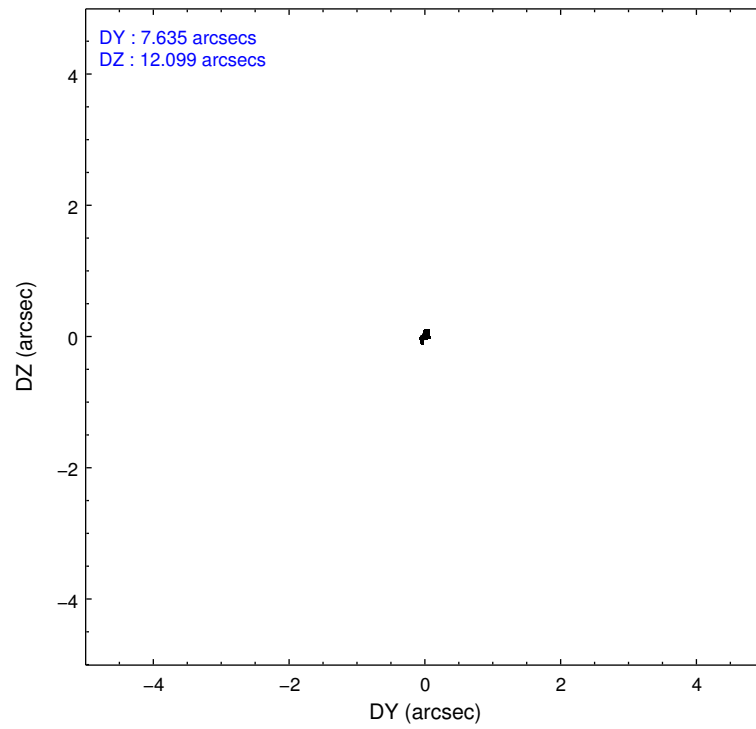
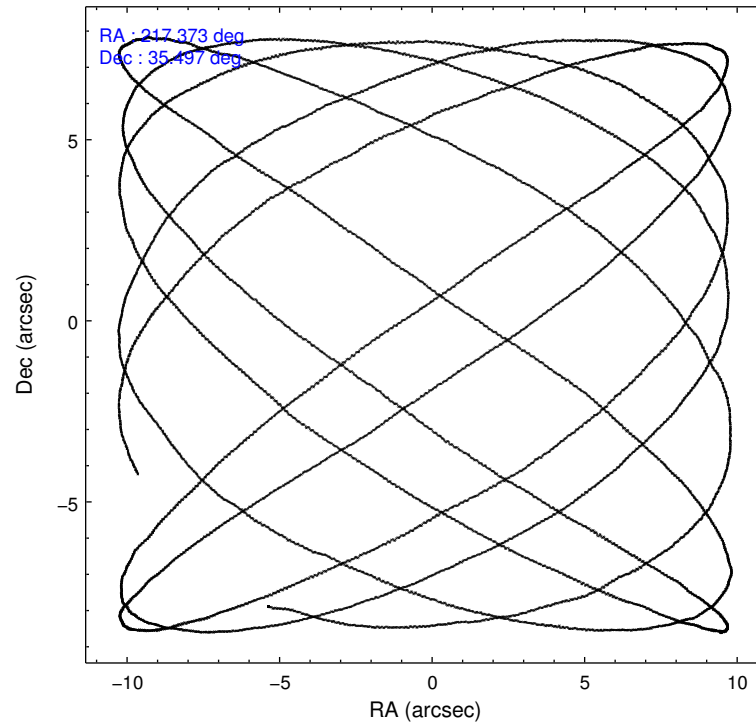
	ccd 0	ccd 1	ccd 2	ccd 3	ccd 6
level 1 events	30568	30061	36040	31746	31793
rejected events	27412	26583	32985	28725	28619
rejected %	89%	88%	91%	90%	90%

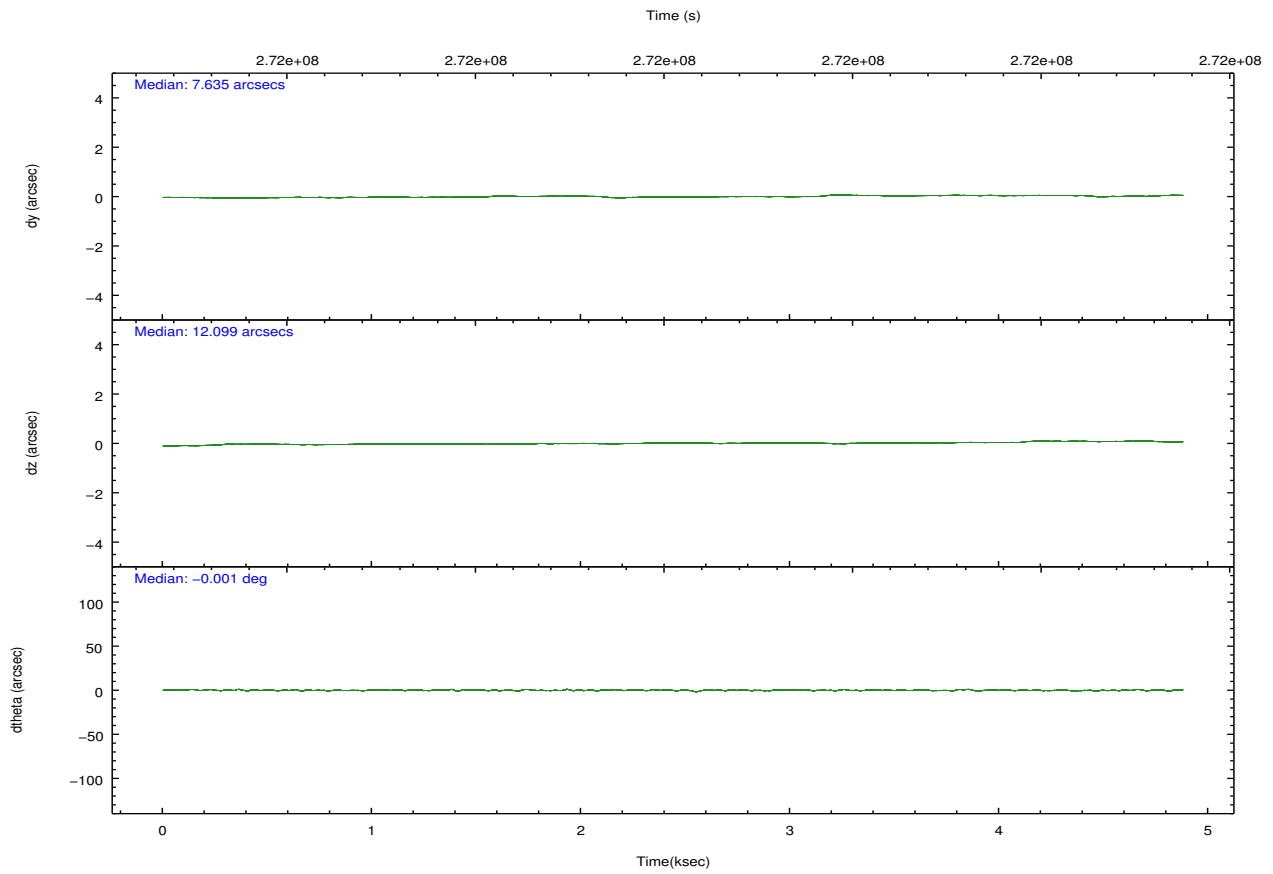
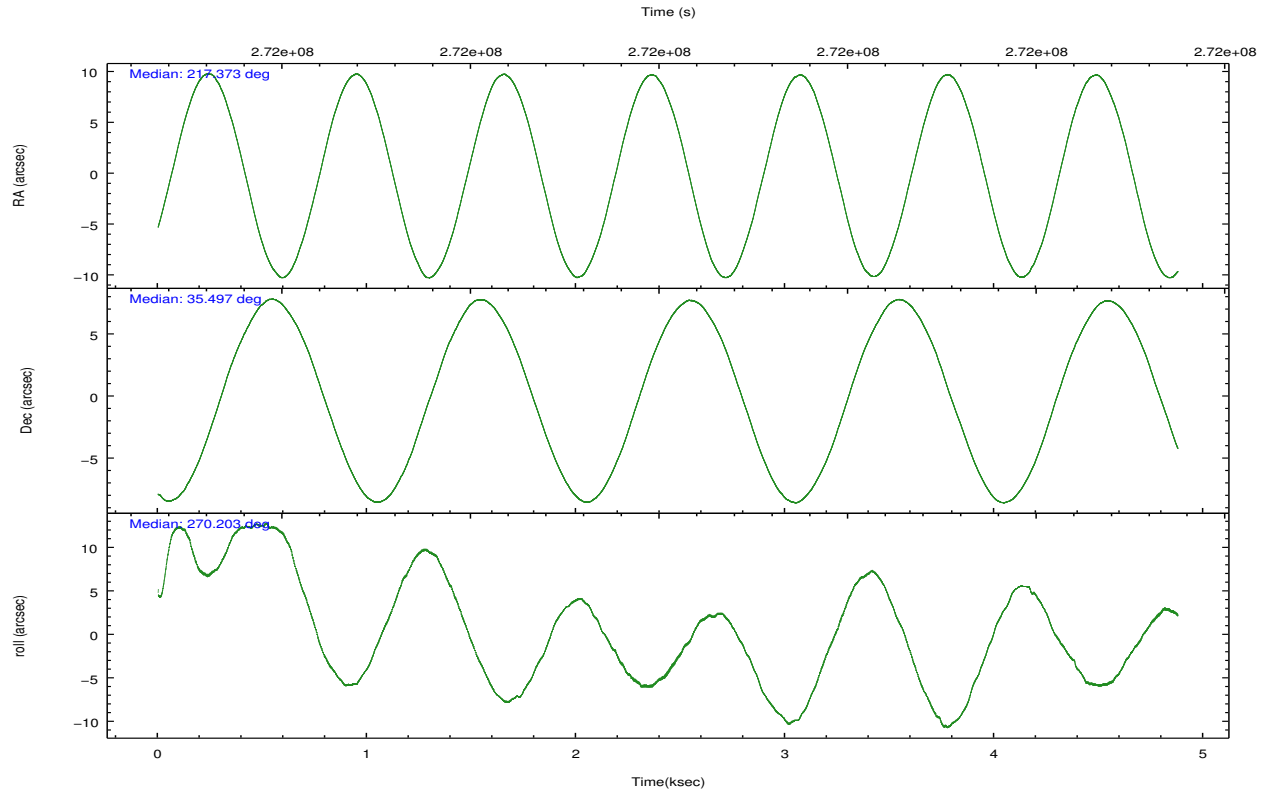
	ccd 0	ccd 1	ccd 2	ccd 3	ccd 6
grade 0 events	1141	1330	1114	1134	1143
	3%	4%	3%	3%	3%
grade 1 events	16	19	21	22	14
	0%	0%	0%	0%	0%
grade 2 events	781	735	758	647	677
	2%	2%	2%	2%	2%
grade 3 events	366	379	336	357	365
	1%	1%	0%	1%	1%
grade 4 events	315	355	333	364	365
	1%	1%	0%	1%	1%
grade 5 events	964	1034	890	1063	1060
	3%	3%	2%	3%	3%
grade 6 events	558	683	515	520	627
	1%	2%	1%	1%	1%
grade 7 events	26427	25526	32073	27639	27542
	86%	84%	88%	87%	86%

2.2 Compared Parameters

Parameter	Planned	Actual	Parameter	Planned	Actual
Instrument	ACIS	ACIS	Obspar format version number	7	7
Detector	ACIS-01236	ACIS-01236	Obspar file type	PREDICTED	ACTUAL
Grating	NONE	NONE	Obspar update status	NONE	UPDATED
Data mode	VFAINT	VFAINT	Number of optional ACIS chips dropped	0	0
Observation mode	POINTING	POINTING	On-chip summing requested	N	N
[deg] Pointing RA	217.355957	217.3730336144211	Subarray requested	NONE	NONE
[deg] Pointing Dec	35.520025	35.49645041292062	Alternating exposures requested	N	N
[deg] Pointing Roll	270.011179	270.2099454074428	[s] Primary exposure time	0.000000	3.1
[mm] SIM focus pos	-0.782348	-0.7809083437167272			
[mm] SIM defocus	0	0.001439871863259334			
[mm] SIM translation stage pos	-233.592463	-233.5874344608287			
[mm] SIM translation stage offset	0	-0.005018542100998502			
[s] Observation start time (MET)	271997783.184000	271997407.75175			
Observation start date	2006-08-15T02:55:18	2006-08-15T02:50:07			
[s] Observation end time (MET)	272002483.184000	272002617.31449			
Observation end date	2006-08-15T04:13:38	2006-08-15T04:16:57			
Read mode	TIMED	TIMED			

2.3 Aspect



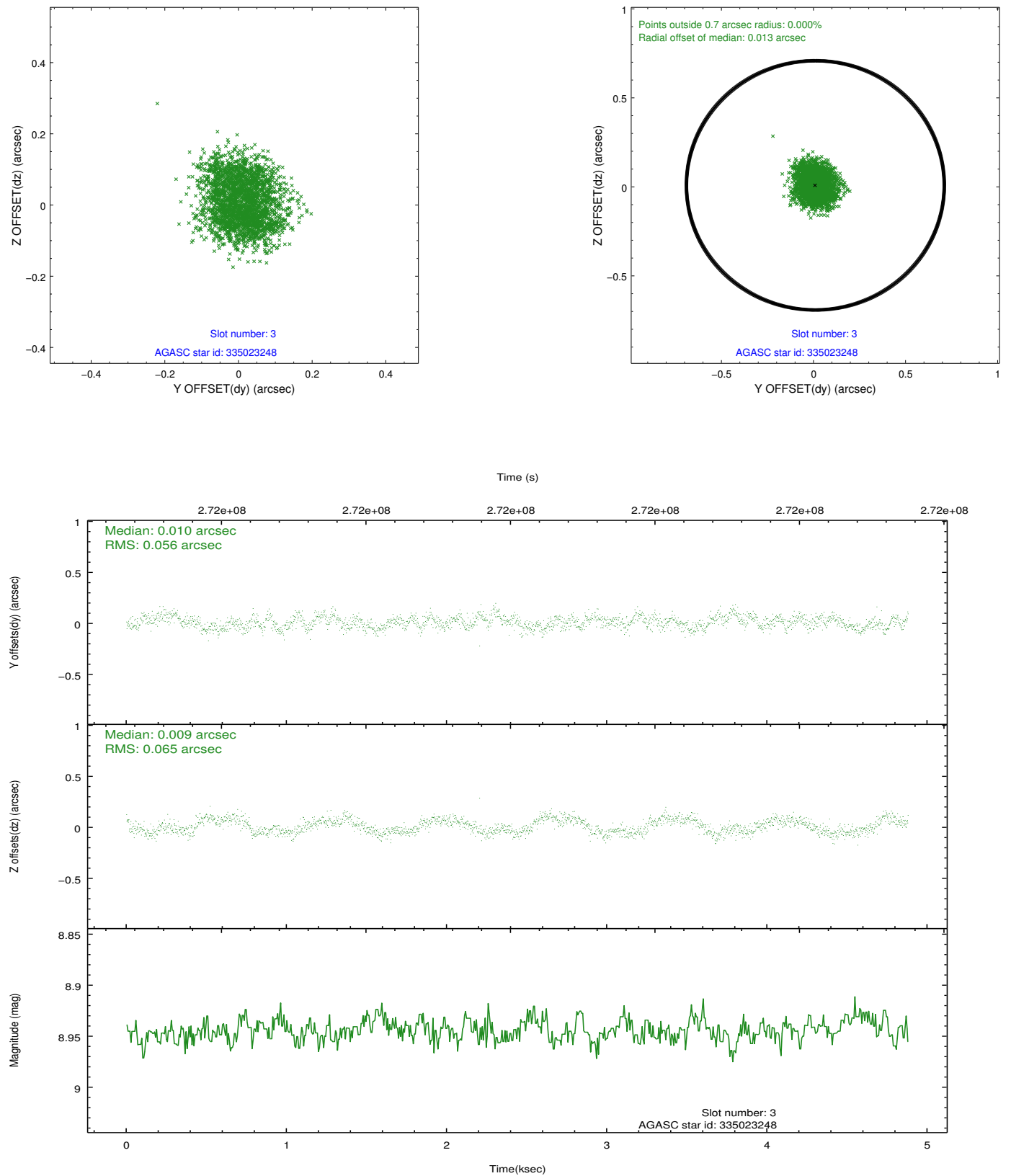


Slot Statistics

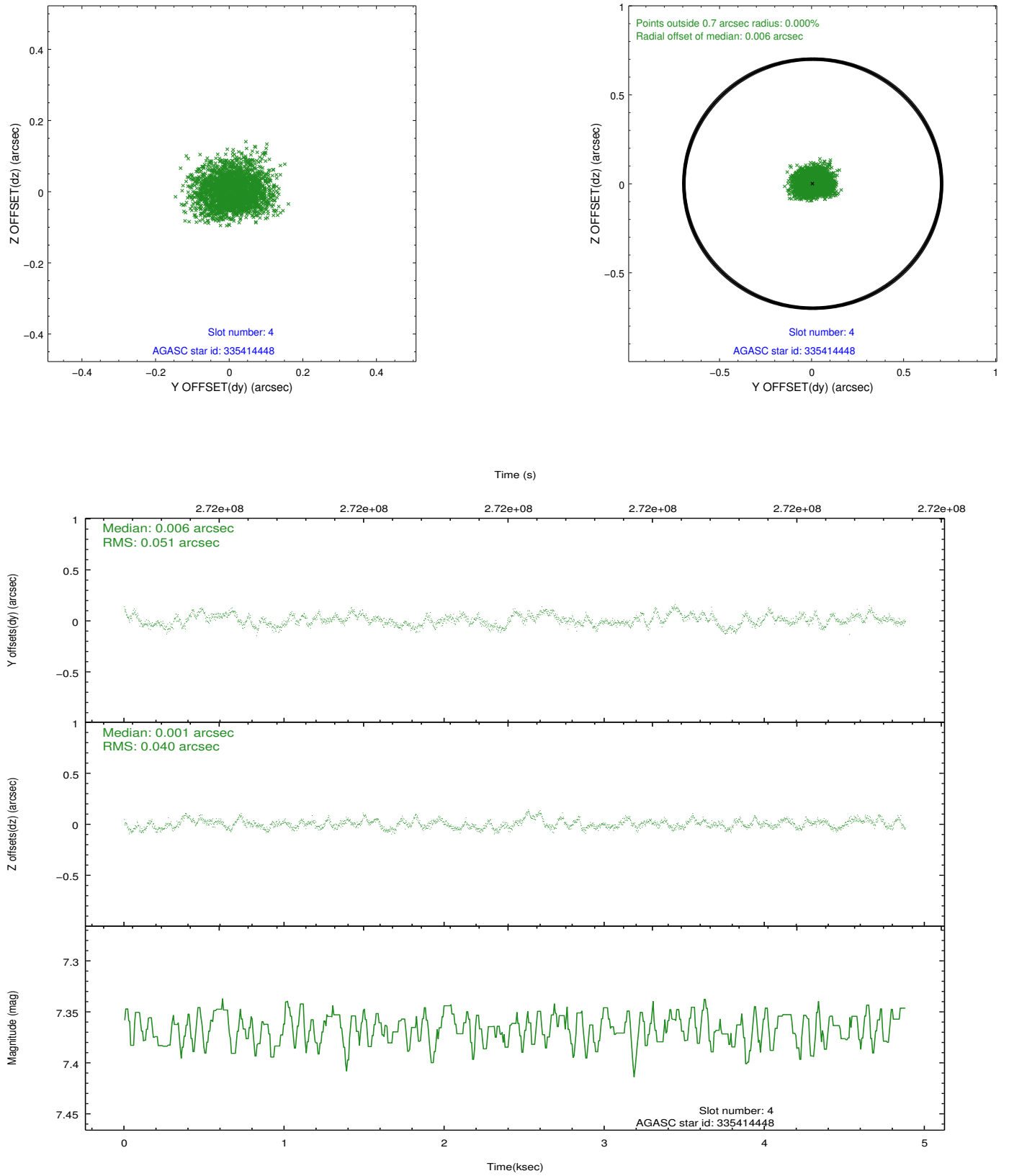
slot	status	id	mag	n_pts	med_dy	med_dz	dr1	dr2	ra	dec	mean_y	mean_z
0	FID	ACIS-I-1	7.24	1189	0.057	-0.044	0.006	0.011	0.000000	0.000000	932.07	-835.69
1	FID	ACIS-I-5	7.23	1190	-0.178	0.065	0.006	0.010	0.000000	0.000000	-1815.55	1061.32
2	FID	ACIS-I-6	7.24	1189	0.030	0.049	0.007	0.011	0.000000	0.000000	396.27	1707.20
3	GUIDE	335023248	8.94	2375	0.010	0.009	0.093	0.140	217.634832	34.944512	2071.26	822.92
4	GUIDE	335414448	7.37	2379	0.006	0.001	0.070	0.111	216.992261	35.577204	-205.93	-1064.05
5	GUIDE	335415168	9.76	2375	0.018	0.158	0.122	0.199	217.681296	35.301767	784.51	954.72
6	GUIDE	335421696	8.96	2379	0.056	0.005	0.084	0.137	218.045699	35.772449	-914.54	2015.49
7	GUIDE	335419120	9.66	2374	-0.088	-0.178	0.122	0.204	216.521861	35.833546	-1139.20	-2433.59

2.4 Star Slots

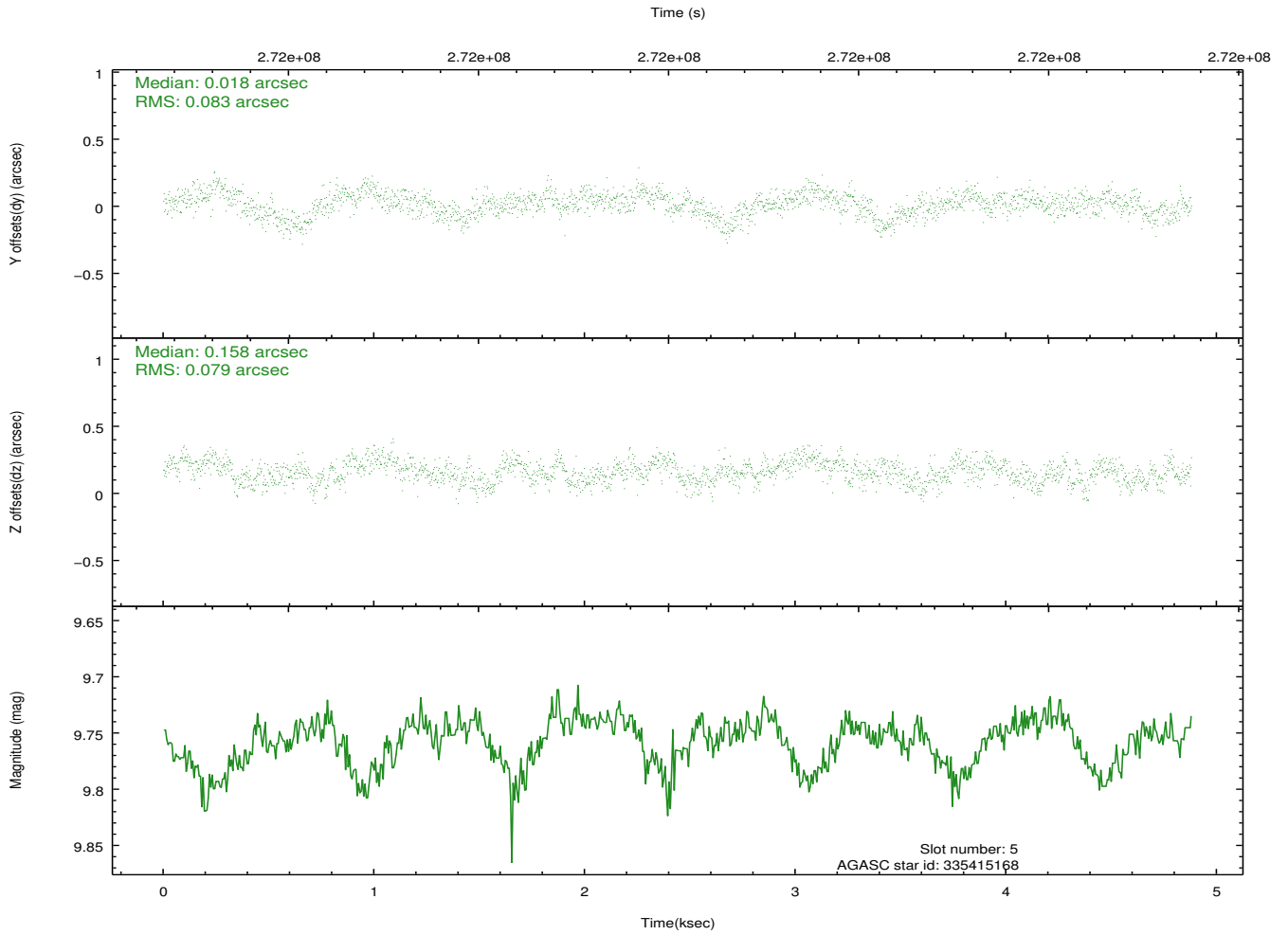
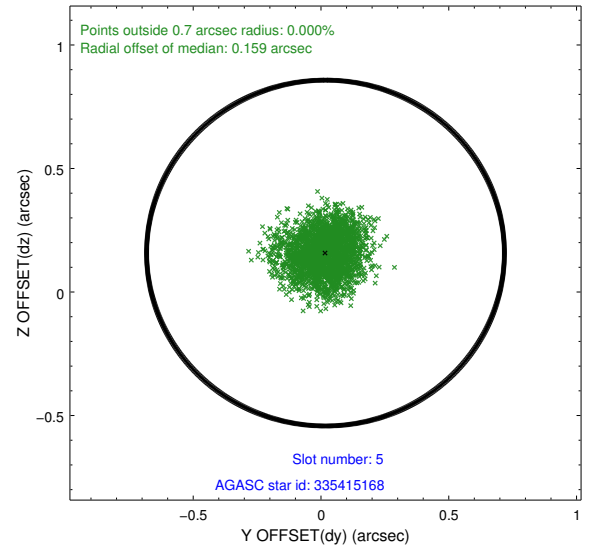
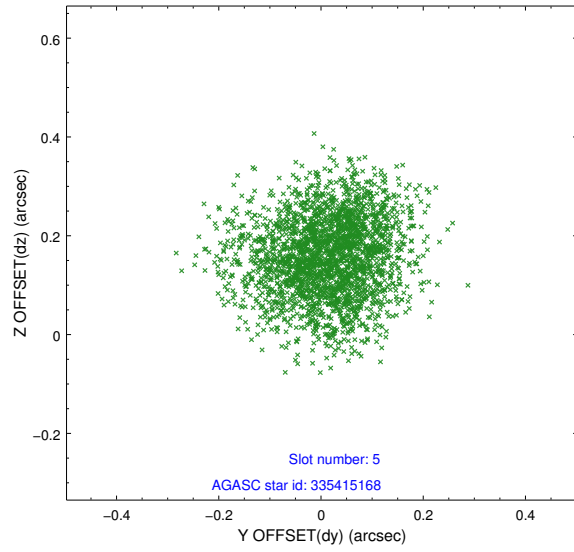
2.4.1 Slot 3



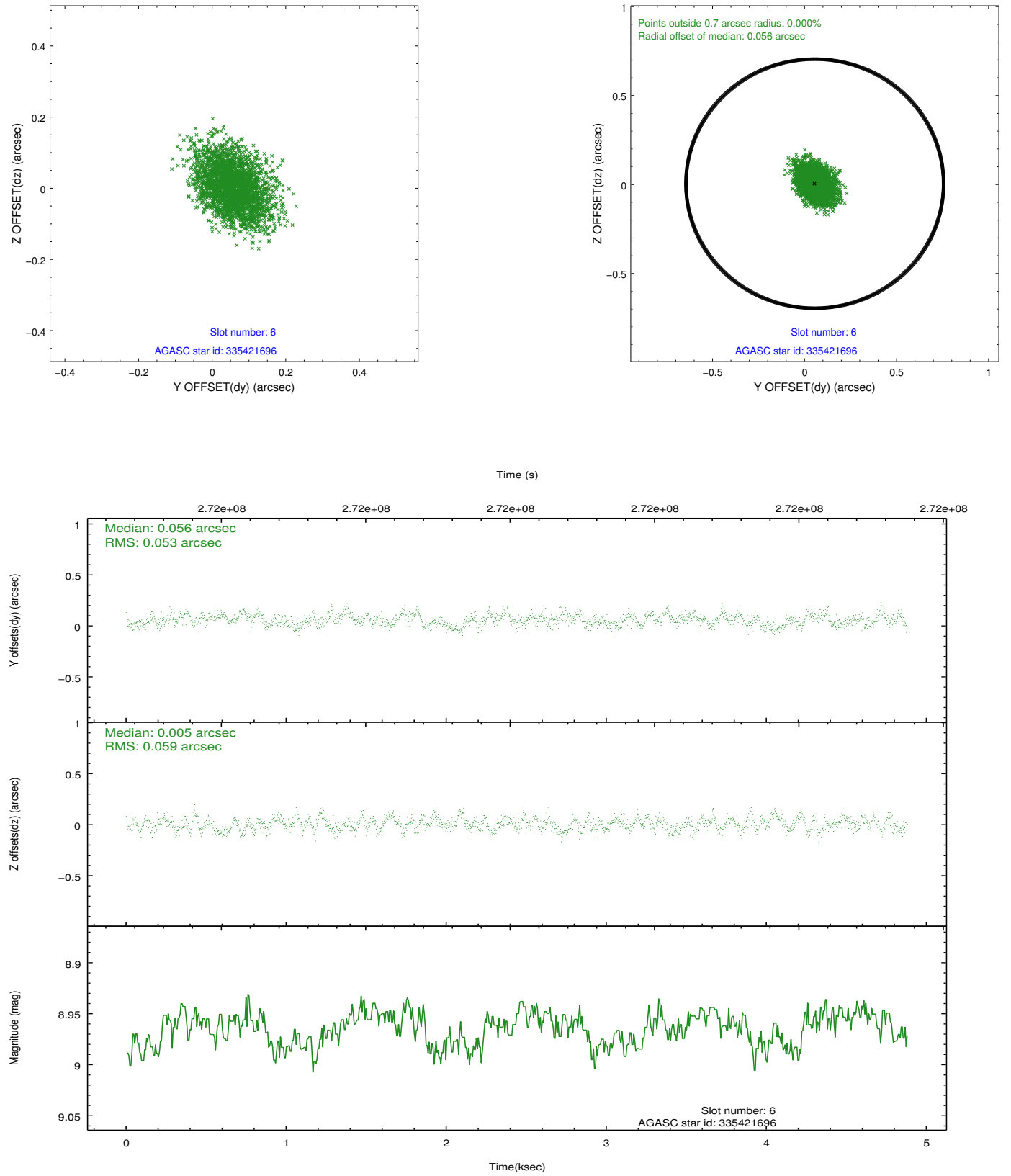
2.4.2 Slot 4



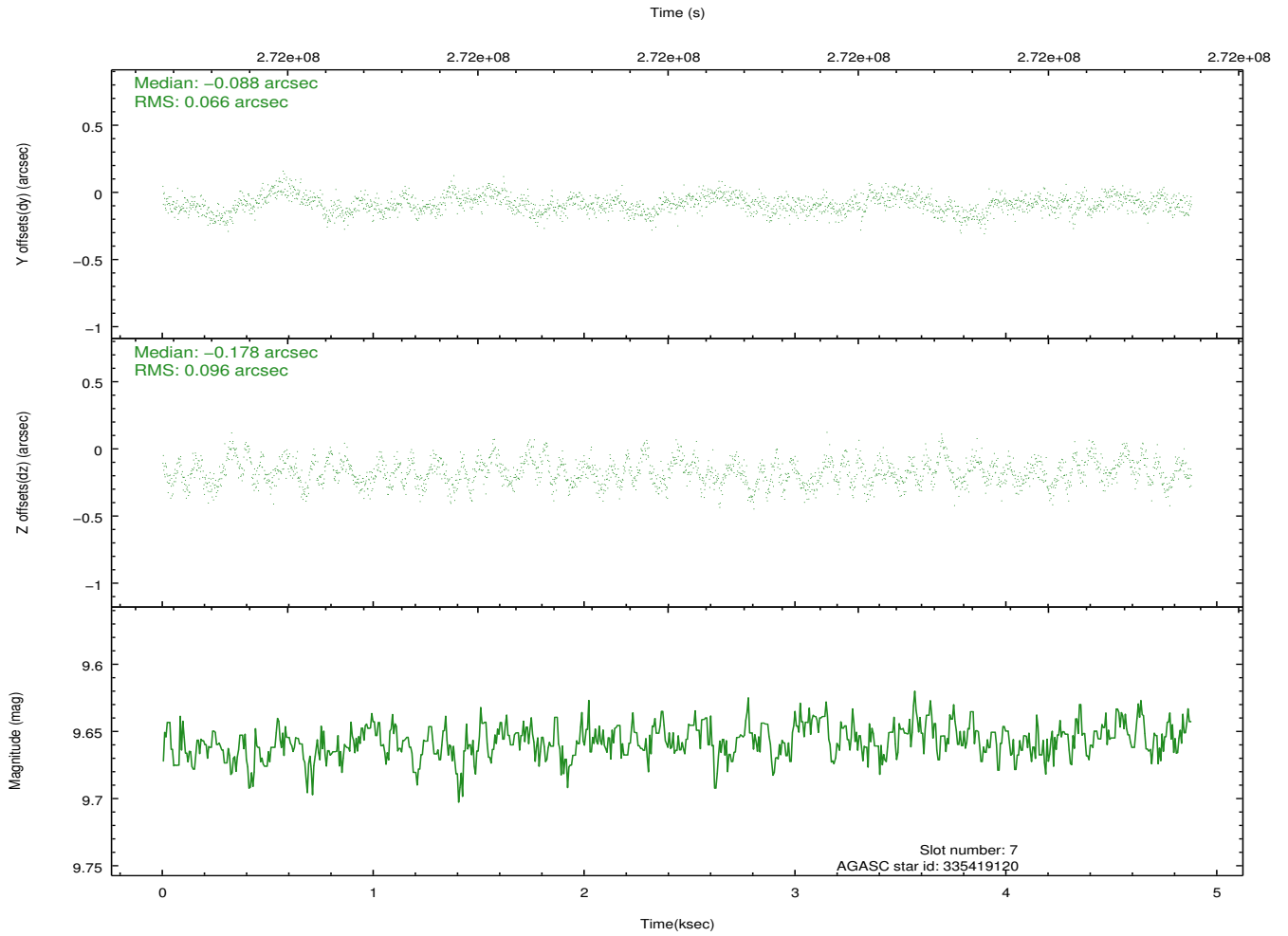
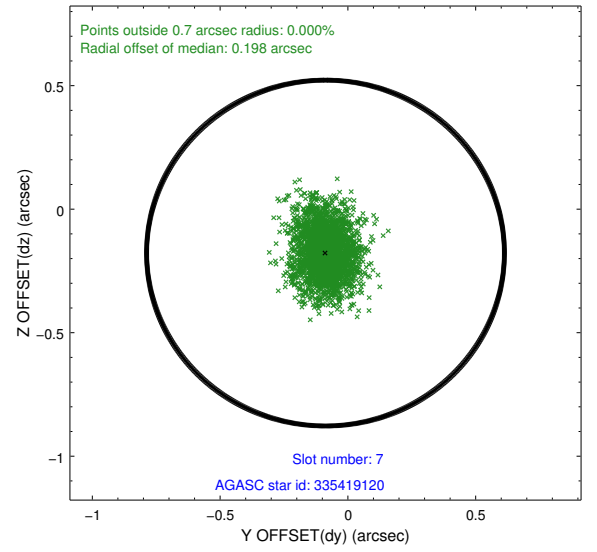
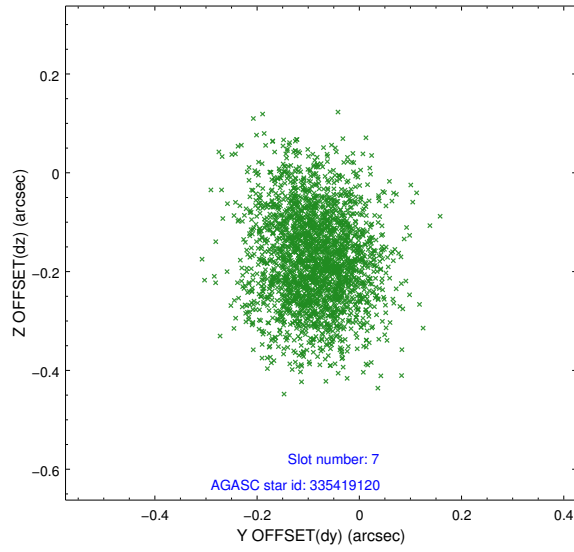
2.4.3 Slot 5



2.4.4 Slot 6

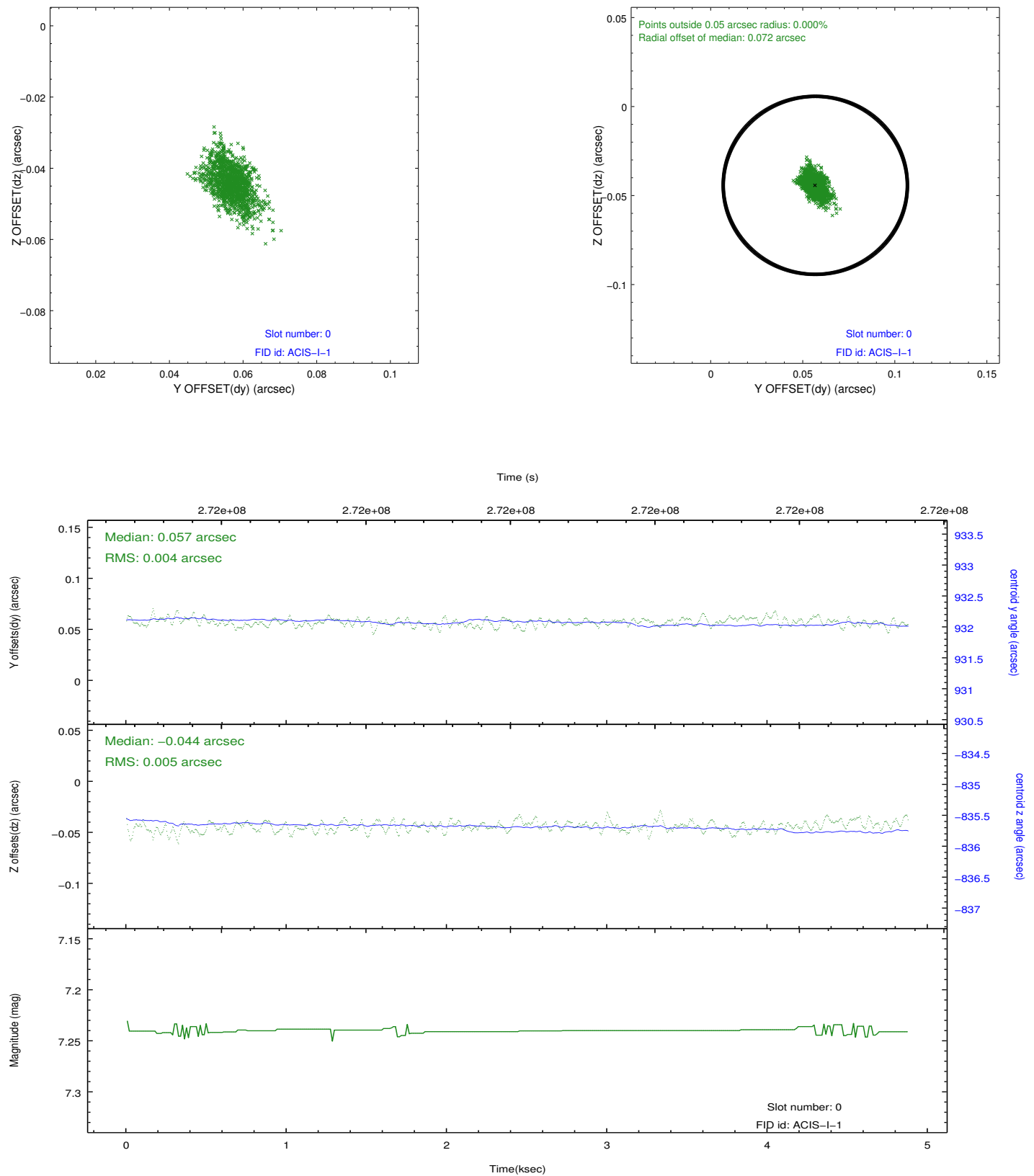


2.4.5 Slot 7

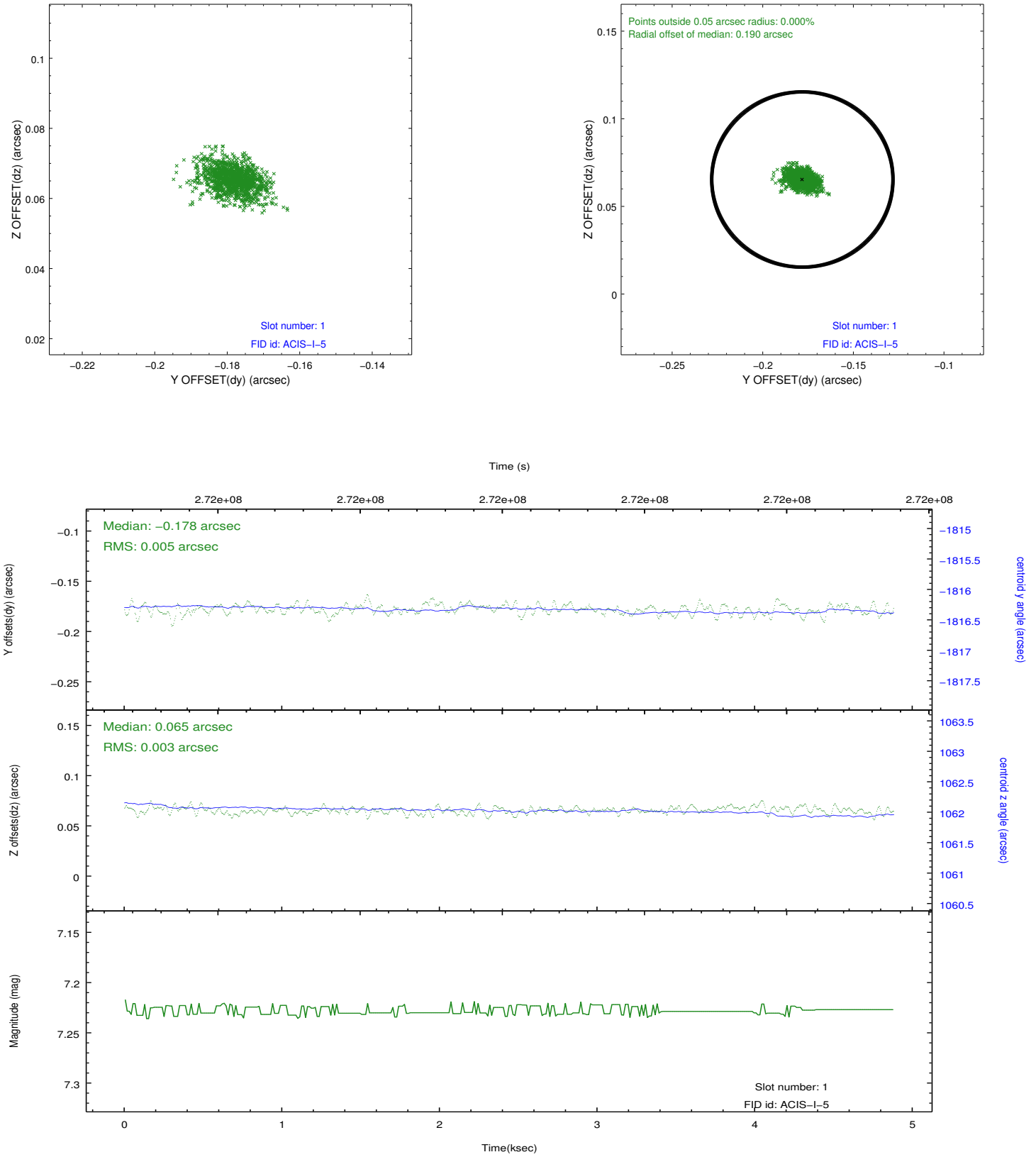


2.5 FID Slots

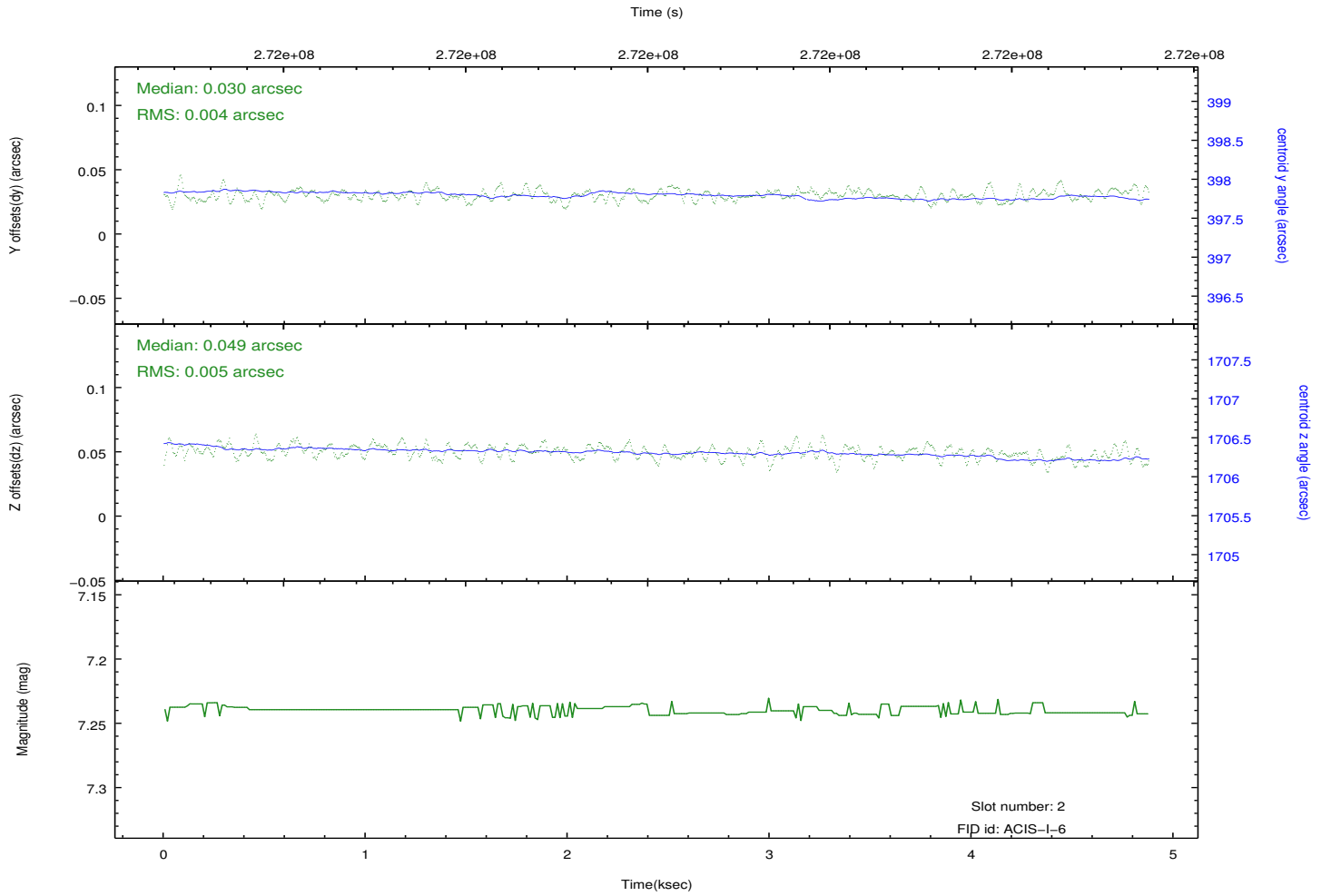
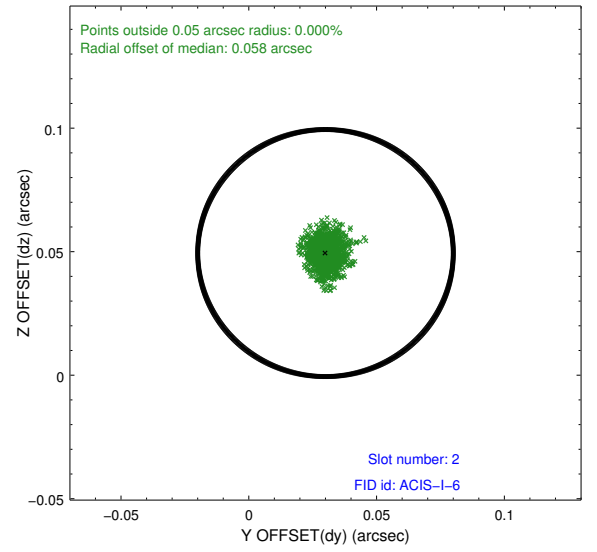
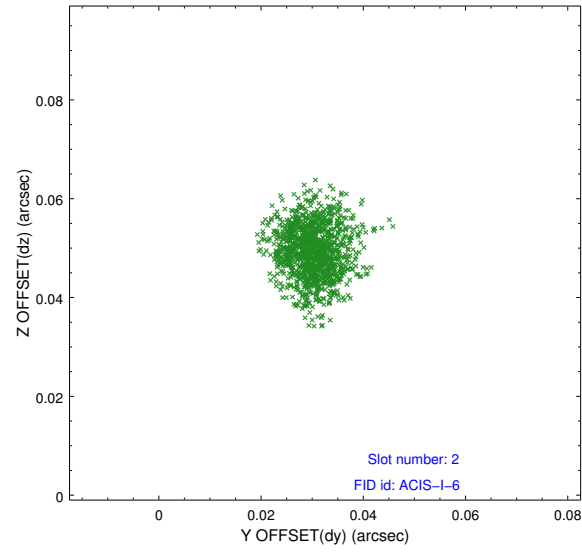
2.5.1 Slot 0



2.5.2 Slot 1



2.5.3 Slot 2



A Summary

A.1 Status

V&V Scientist	Jen Lauer
V&V Date (YYYY-MM-DD)	2012.04.08
V&V Edition	1
V&V Disposition and Status	OK
V&V Charge Time	4.47640003

A.2 Comments