

V&V Reference Report

L2 ASCDS Version : 8.4.3.1

Observation 6970 - L2 Version 2
Chandra X-Ray Center

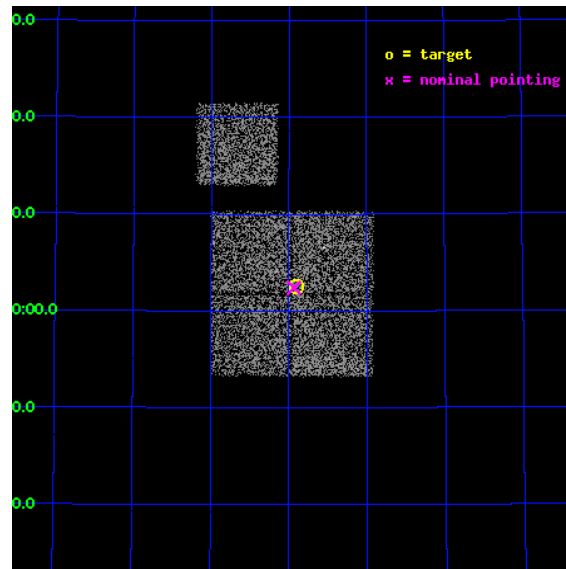
L2 Processing Date : Apr 8 2012

Contents

1	Front	2
2	OBI	3
2.1	OBI	3
2.1.1	Images	3
2.1.2	Bias	3
2.1.3	Parameters	4
2.1.4	Events	4
2.2	Compared Parameters	5
2.3	Aspect	6
2.4	Star Slots	9
2.4.1	Slot 3	9
2.4.2	Slot 4	10
2.4.3	Slot 5	11
2.4.4	Slot 6	12
2.4.5	Slot 7	13
2.5	FID Slots	14
2.5.1	Slot 0	14
2.5.2	Slot 1	15
2.5.3	Slot 2	16
A	Summary	17
A.1	Status	17
A.2	Comments	17

1 Front

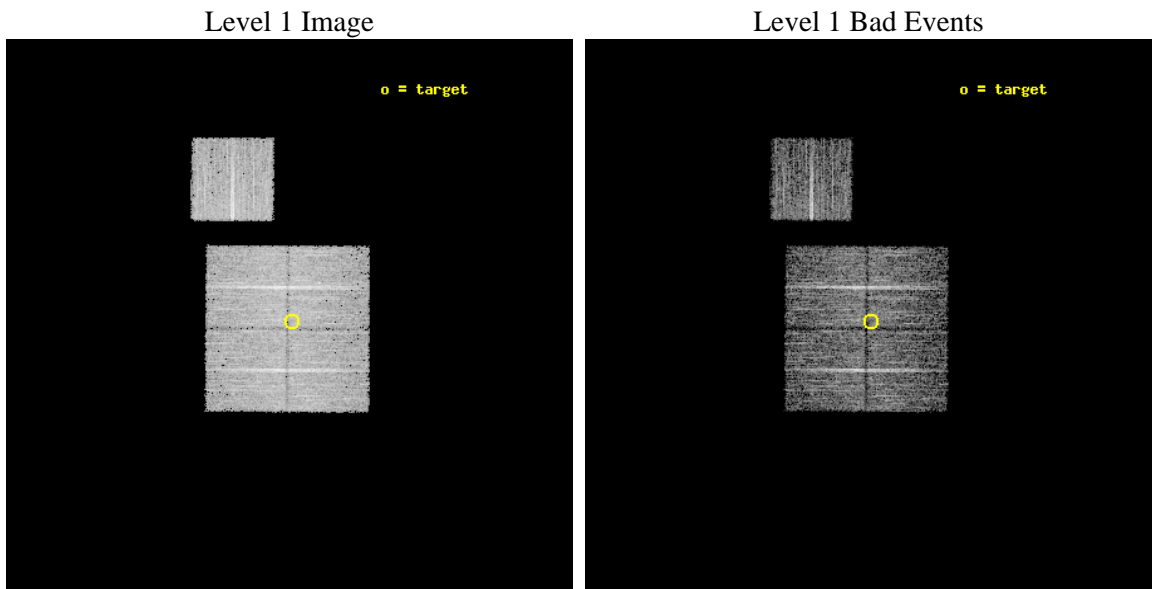
seq_num	800603	Sequence number
obs_id	6970	Observation id
title	A Search for the Origin of Ultrahigh Energy Cosmic Rays	Proposal t
observer	Prof. David Helfand	Principal investigator
object	P14	Source name
dtcycle	0	
cycle	P	events from which exps? Prim/Second/Both
ra_targ	167.726	Observer's specified target RA [deg]
dec_targ	57.0417	Observer's specified target Dec [deg]
ra_nom	167.73396309761	Nominal RA [deg]
dec_nom	57.039965031878	Nominal Dec [deg]
roll_nom	0.3743154342838	Nominal Roll [deg]
revision	2	Processing version of data
ontime	5136.700039506	Sum of GTIs [s]
livetime	5069.5852719063	Livetime [s]
ontime0	5136.700039506	Sum of GTIs [s]
ontime1	5133.5590791702	Sum of GTIs [s]
ontime2	5136.700039506	Sum of GTIs [s]
ontime3	5136.700039506	Sum of GTIs [s]
ontime6	5133.5590492487	Sum of GTIs [s]
l2events	16238	Number of level 2 events



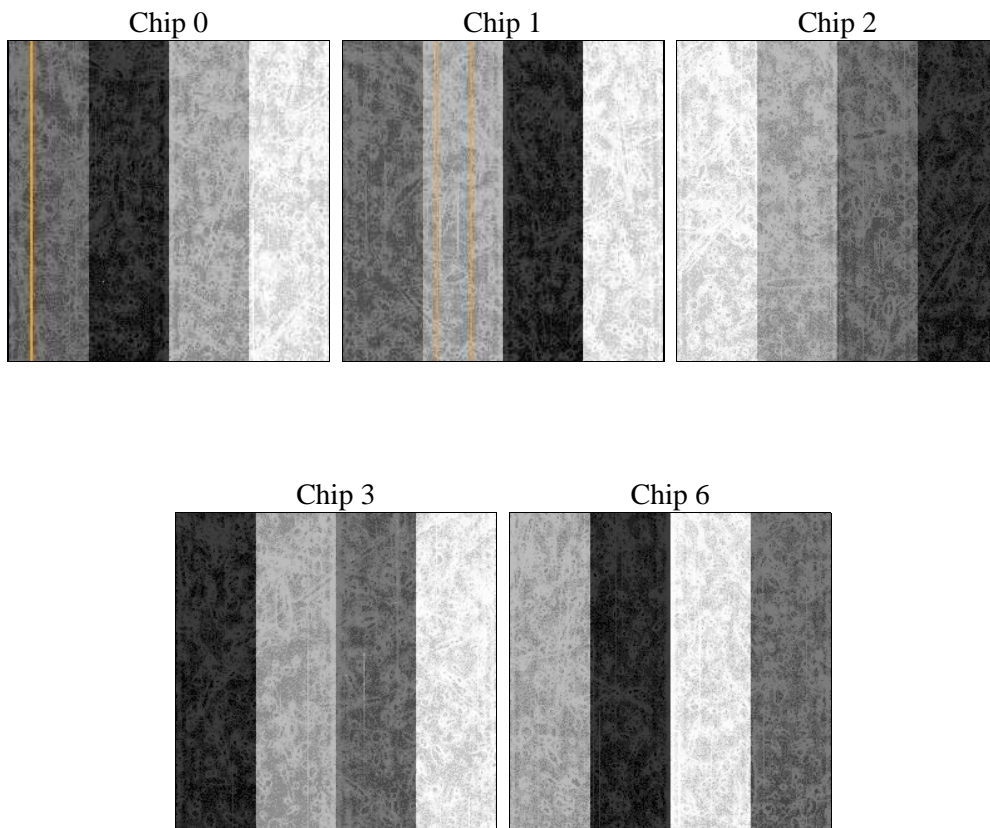
2 OBI

2.1 OBI

2.1.1 Images



2.1.2 Bias



2.1.3 Parameters

obi_num	0	Obi number	sched_exp_time	5000.000000	[s] Scheduled observation exposure time
ascdsver	8.4.3.1	Processing system revision	ontime	5136.700039506	Sum of GTIs [s]
caldsver	4.4.9	 	ontime0	5136.700039506	Sum of GTIs [s]
date	2012-04-08T19:31:02	Date and time of file creation	ontime1	5133.5590791702	Sum of GTIs [s]
revision	2	Processing version of data	ontime2	5136.700039506	Sum of GTIs [s]
			ontime3	5136.700039506	Sum of GTIs [s]
			ontime6	5133.5590492487	Sum of GTIs [s]
			l1events	208825	Number of level 1 events

2.1.4 Events

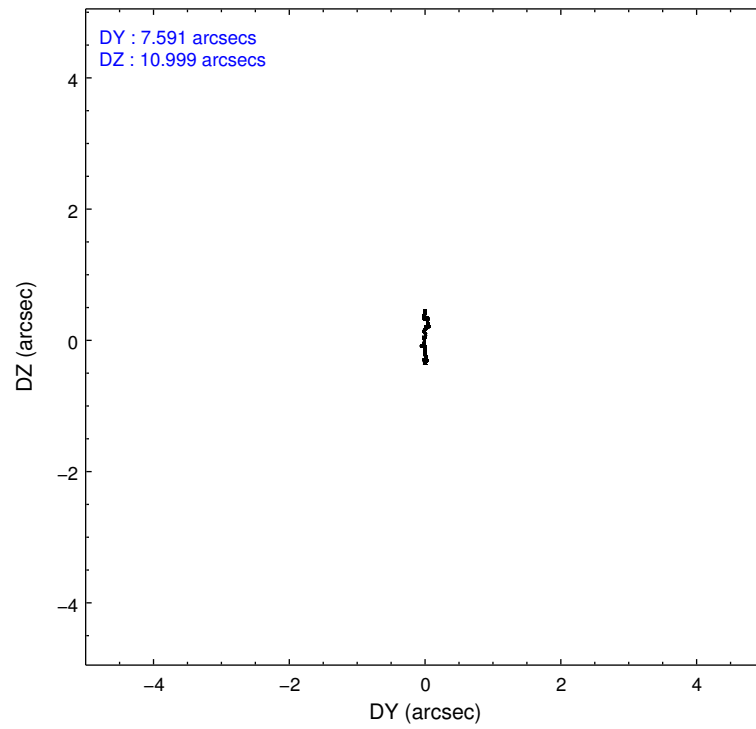
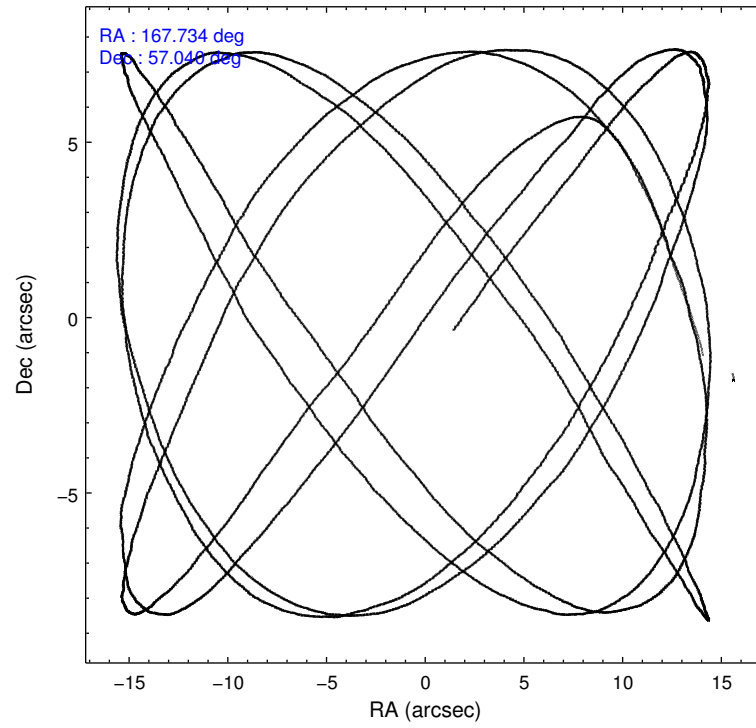
	ccd 0	ccd 1	ccd 2	ccd 3	ccd 6
level 1 events	40643	38950	45299	41139	42794
rejected events	36855	34635	41341	37475	39024
rejected %	90%	88%	91%	91%	91%

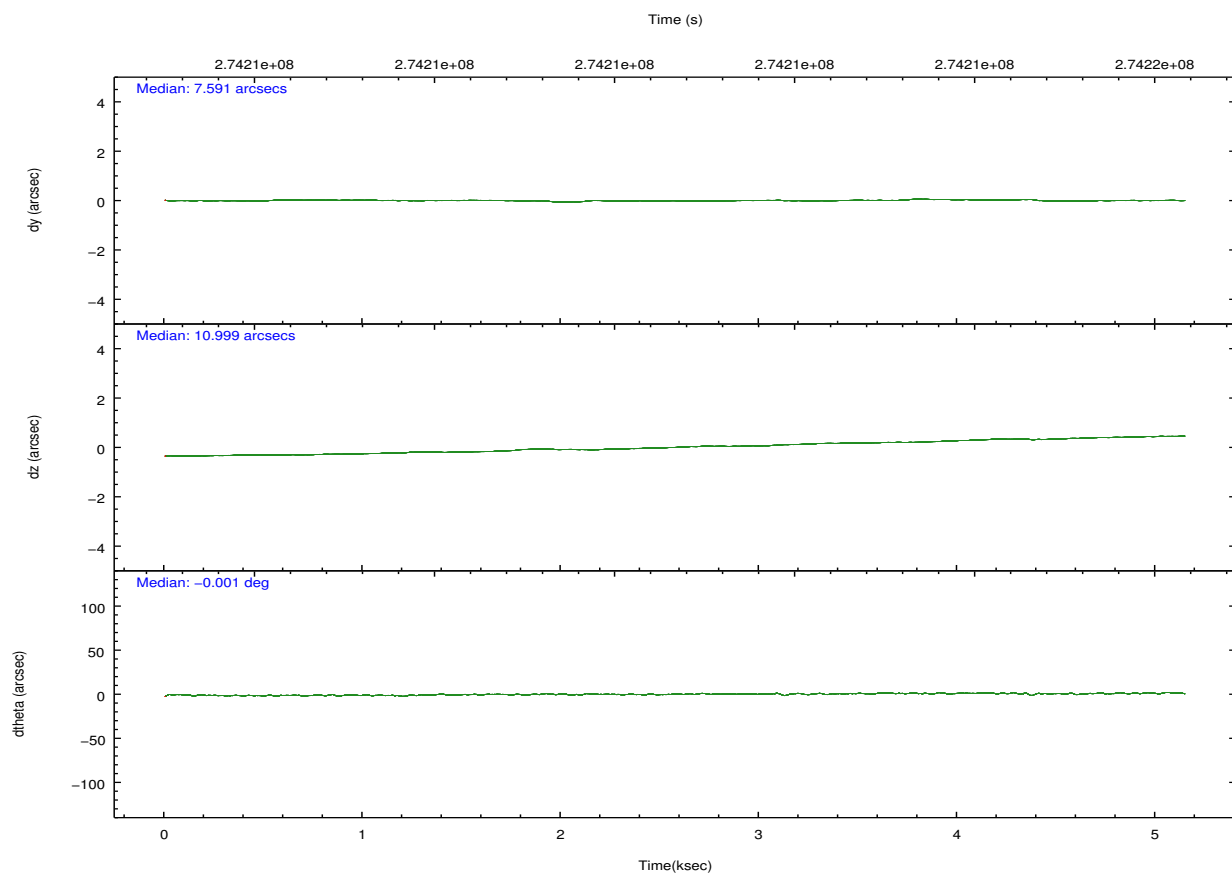
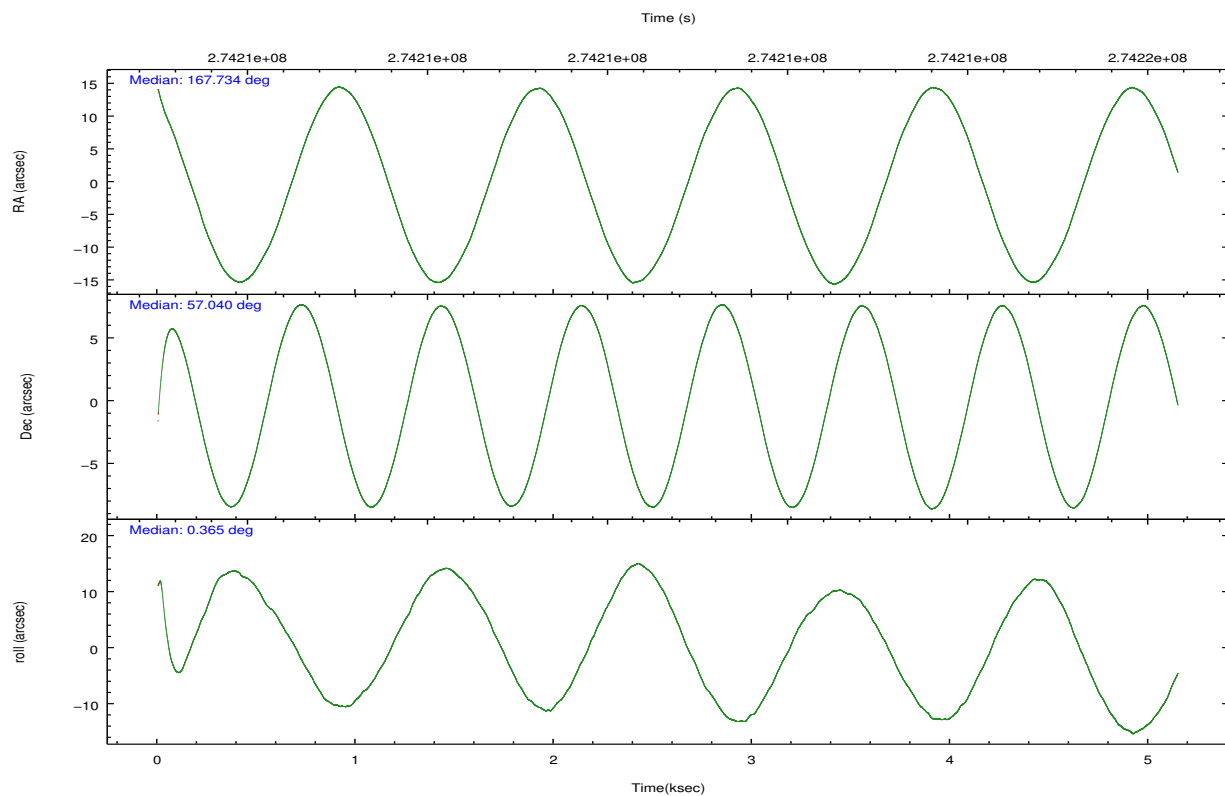
	ccd 0	ccd 1	ccd 2	ccd 3	ccd 6
grade 0 events	1456	1681	1640	1512	1421
	3%	4%	3%	3%	3%
grade 1 events	26	20	28	26	23
	0%	0%	0%	0%	0%
grade 2 events	966	1055	947	781	864
	2%	2%	2%	1%	2%
grade 3 events	505	495	466	449	465
	1%	1%	1%	1%	1%
grade 4 events	421	497	436	448	443
	1%	1%	0%	1%	1%
grade 5 events	1433	1561	1409	1674	1683
	3%	4%	3%	4%	3%
grade 6 events	760	931	769	790	877
	1%	2%	1%	1%	2%
grade 7 events	35076	32710	39604	35459	37018
	86%	83%	87%	86%	86%

2.2 Compared Parameters

Parameter	Planned	Actual	Parameter	Planned	Actual
Instrument	ACIS	ACIS	Obspar format version number	7	7
Detector	ACIS-01236	ACIS-01236	Obspar file type	PREDICTED	ACTUAL
Grating	NONE	NONE	Obspar update status	NONE	UPDATED
Data mode	VFAINT	VFAINT	Number of optional ACIS chips dropped	0	0
Observation mode	POINTING	POINTING	On-chip summing requested	N	N
[deg] Pointing RA	167.690567	167.7339630976129	Subarray requested	NONE	NONE
[deg] Pointing Dec	57.025974	57.03996503187771	Alternating exposures requested	N	N
[deg] Pointing Roll	0.201992	0.3743154342838024	[s] Primary exposure time	0.000000	3.1
[mm] SIM focus pos	-0.782348	-0.7809083437167272			
[mm] SIM defocus	0	0.001439871863259334			
[mm] SIM translation stage pos	-233.592463	-233.5874344608287			
[mm] SIM translation stage offset	0	-0.005018542100998502			
[s] Observation start time (MET)	274209912.184000	274208667.51814			
Observation start date	2006-09-09T17:24:07	2006-09-09T17:04:27			
[s] Observation end time (MET)	274214912.184000	274215071.20595			
Observation end date	2006-09-09T18:47:27	2006-09-09T18:51:11			
Read mode	TIMED	TIMED			

2.3 Aspect



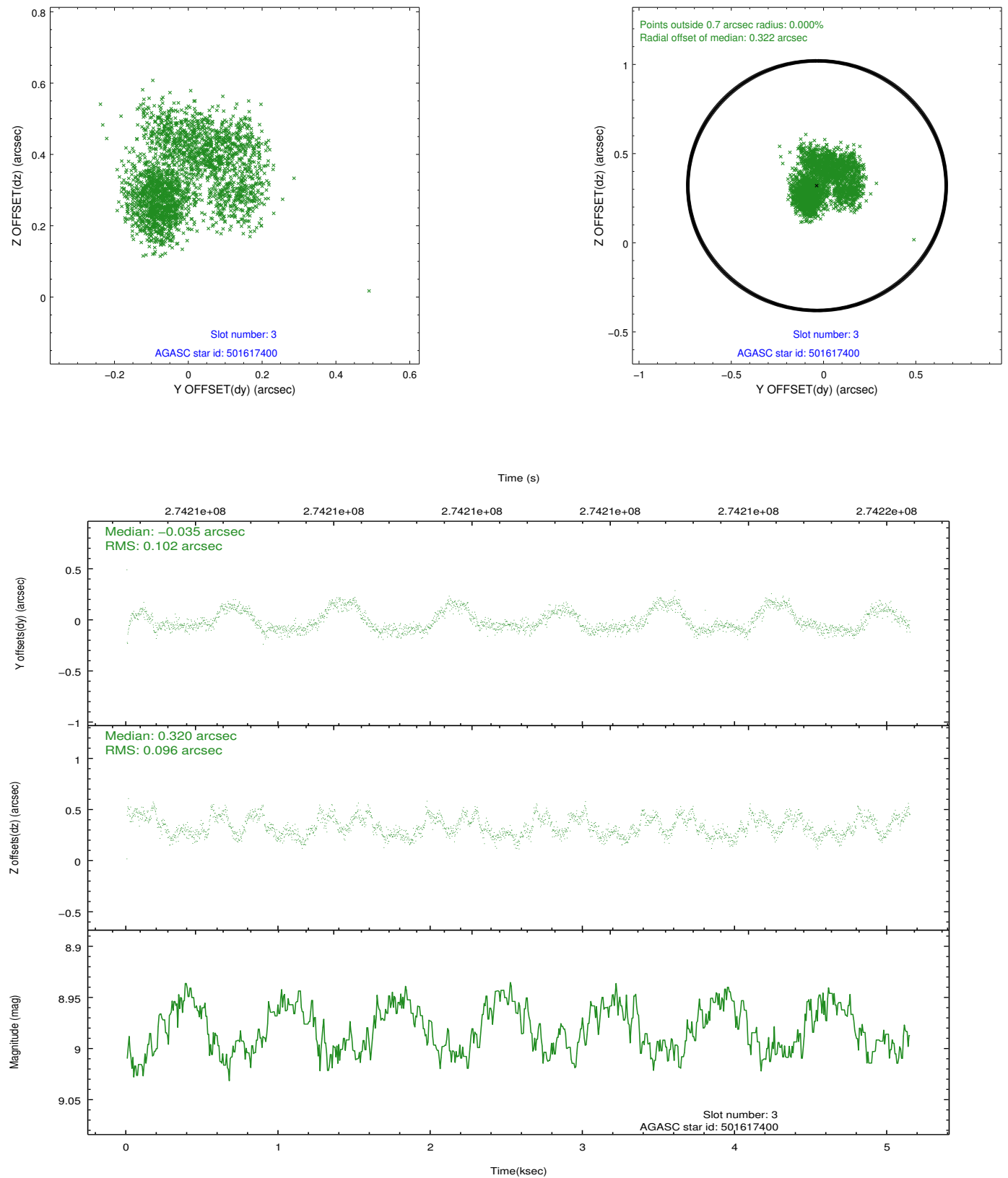


Slot Statistics

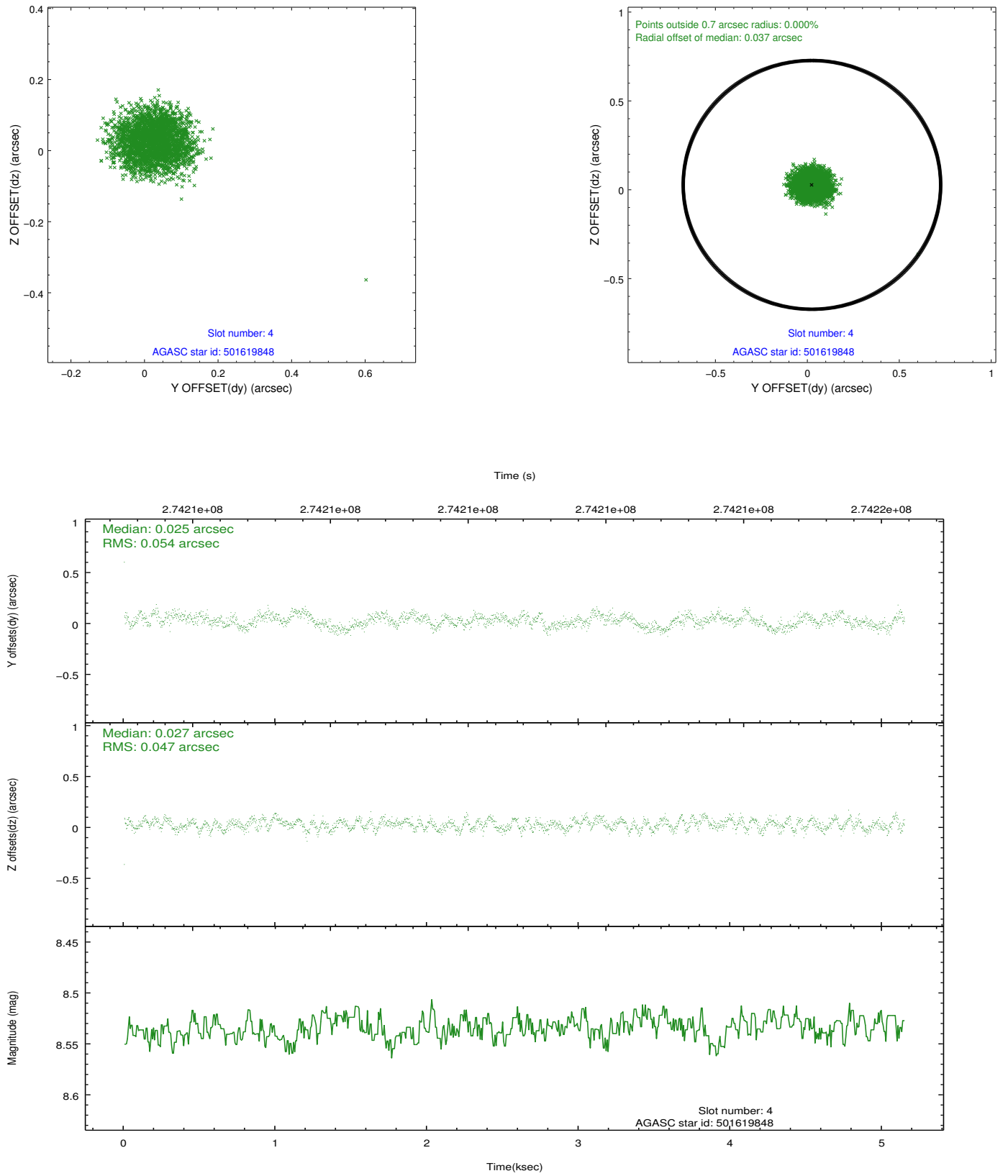
slot	status	id	mag	n_pts	med_dy	med_dz	dr1	dr2	ra	dec	mean_y	mean_z
0	FID	ACIS-I-1	7.24	1256	0.054	-0.059	0.013	0.030	0.000000	0.000000	932.11	-834.58
1	FID	ACIS-I-5	7.23	1256	-0.189	0.054	0.011	0.022	0.000000	0.000000	-1815.56	1062.46
2	FID	ACIS-I-6	7.25	1256	0.044	0.074	0.009	0.017	0.000000	0.000000	396.40	1708.29
3	GUIDE	501617400	8.98	2510	-0.035	0.320	0.152	0.232	167.619761	56.497458	-147.14	-1901.77
4	GUIDE	501619848	8.53	2510	0.025	0.027	0.077	0.117	166.662698	57.051349	-2012.65	112.48
5	GUIDE	501620848	9.32	2507	-0.180	-0.086	0.091	0.146	167.963691	57.281851	533.65	920.47
6	GUIDE	502011920	8.22	2511	0.053	-0.156	0.072	0.106	167.284488	57.617887	-775.31	2136.03
7	GUIDE	502010960	9.70	2509	0.104	-0.115	0.154	0.238	166.594172	57.667026	-2103.36	2332.74

2.4 Star Slots

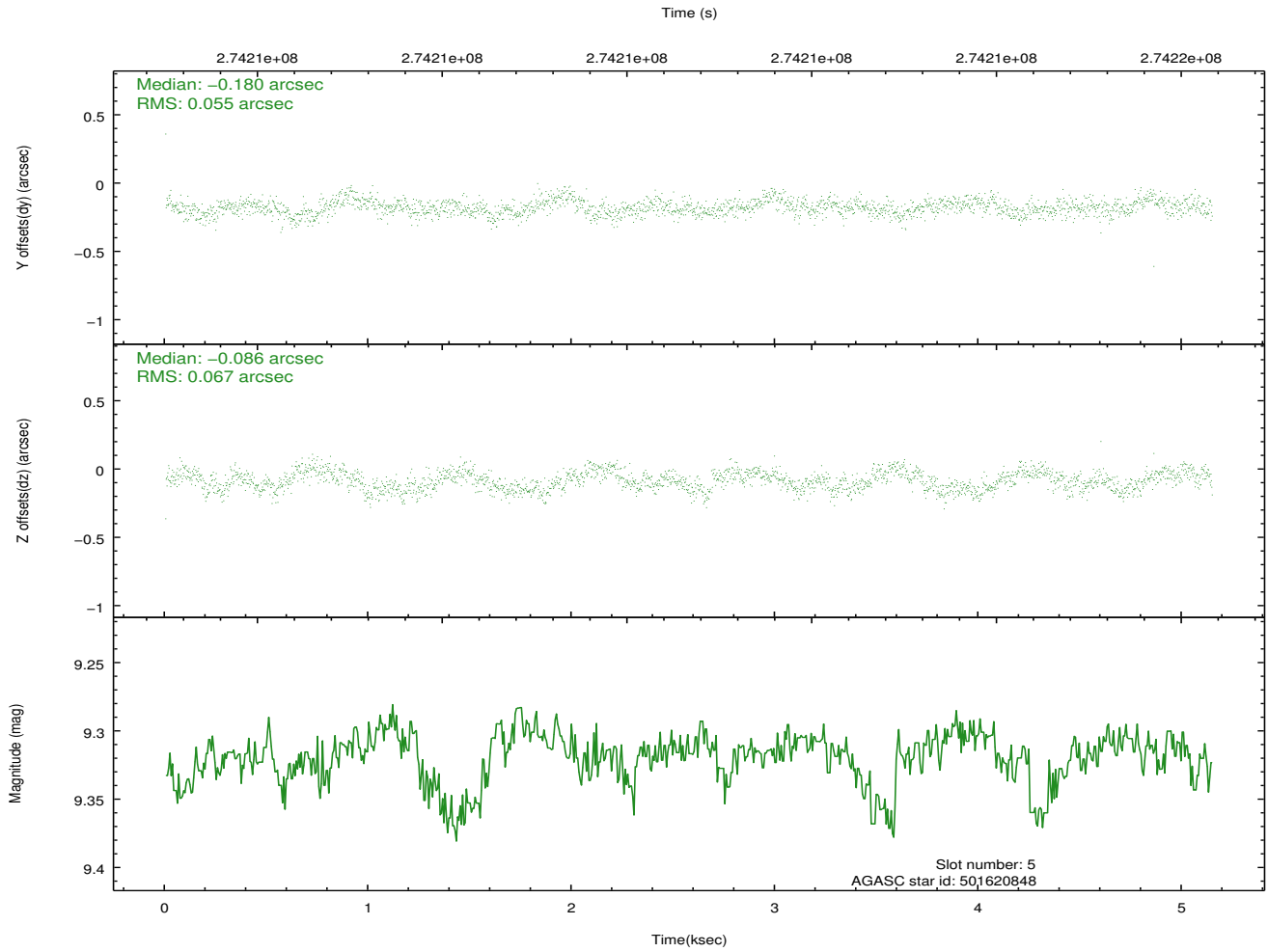
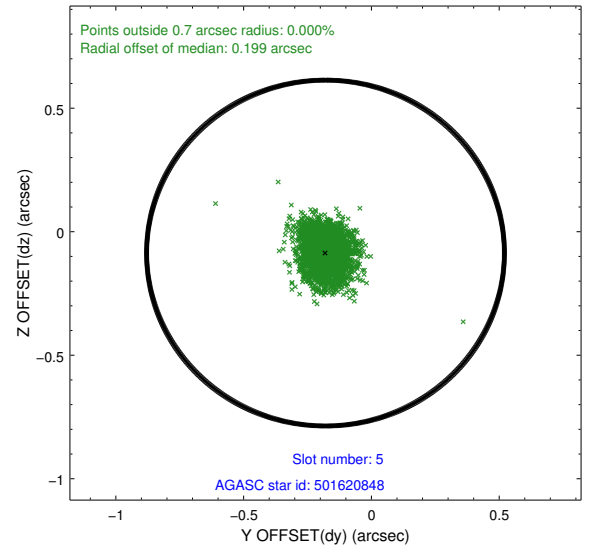
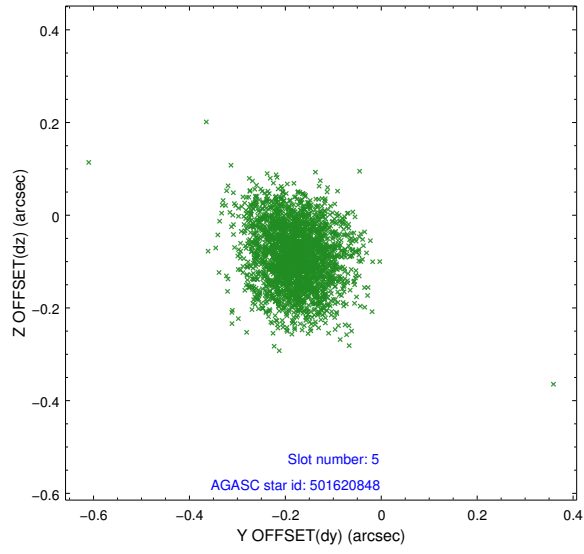
2.4.1 Slot 3



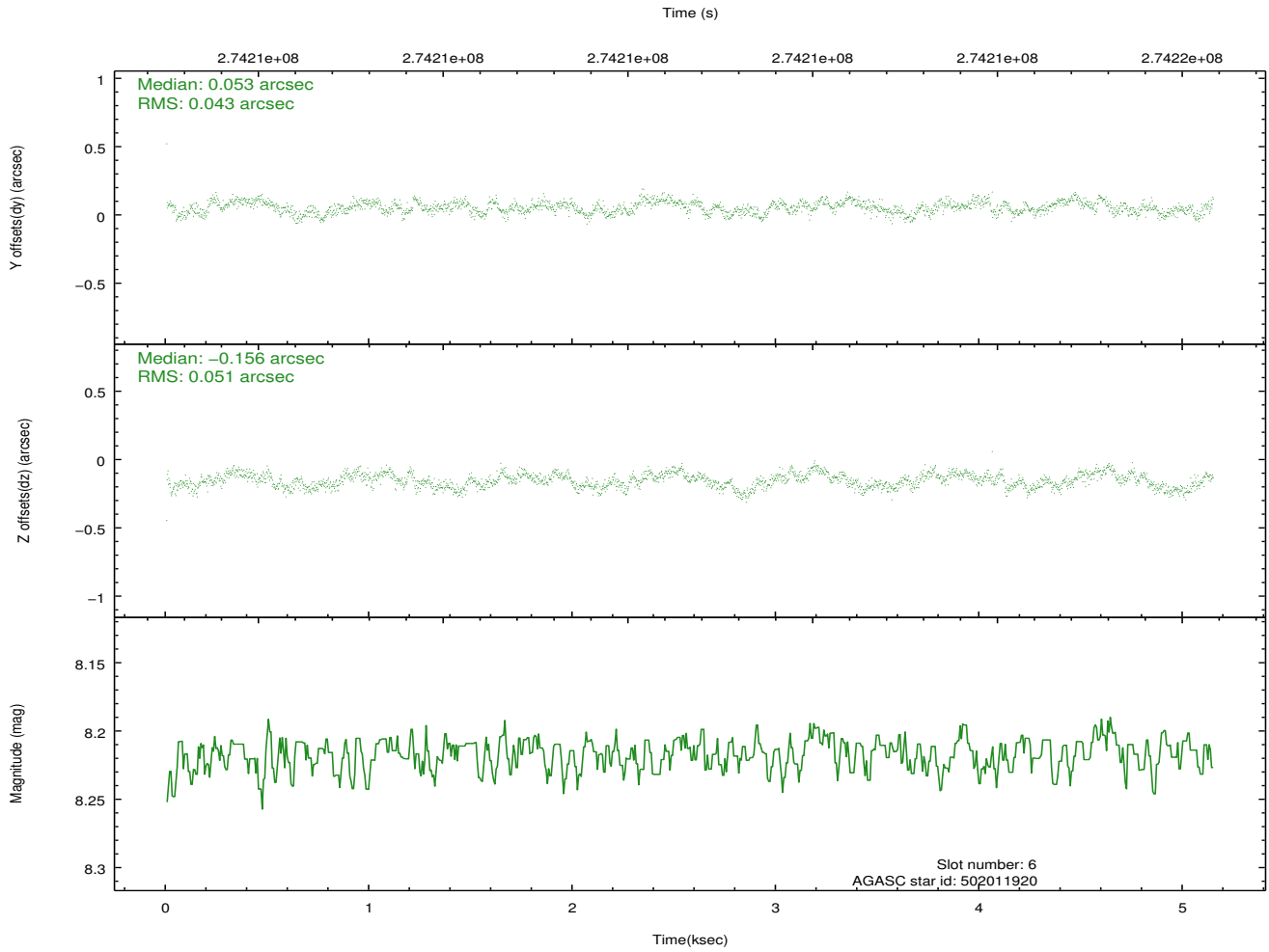
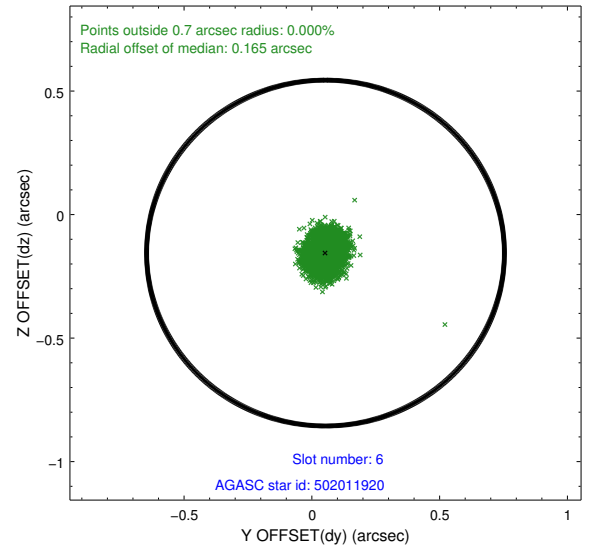
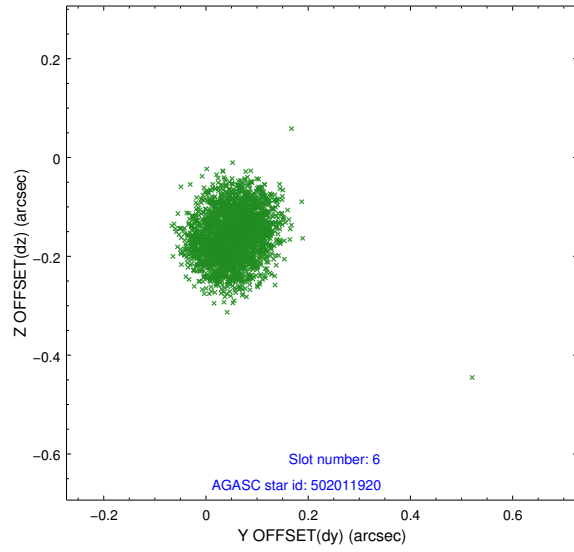
2.4.2 Slot 4



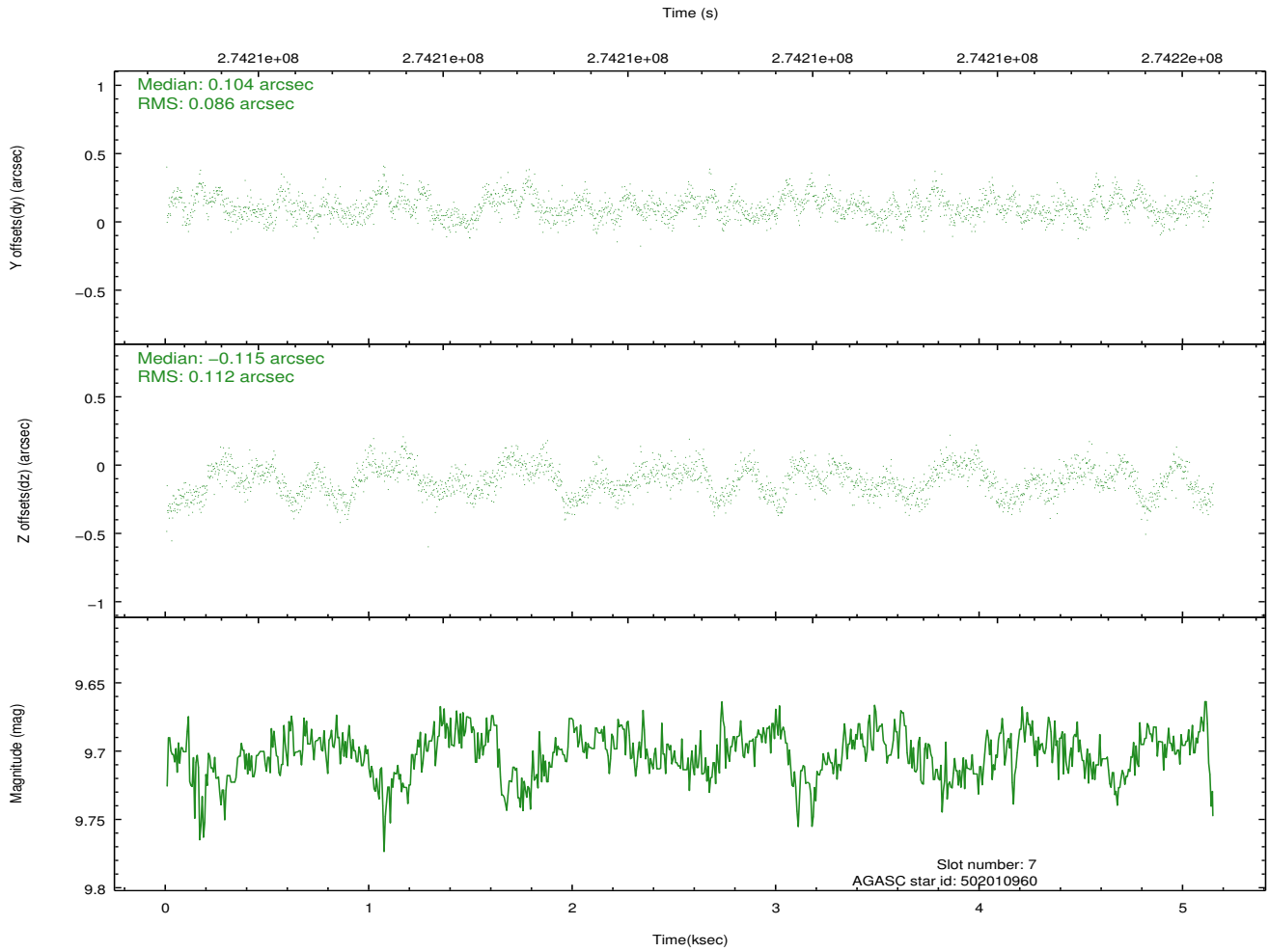
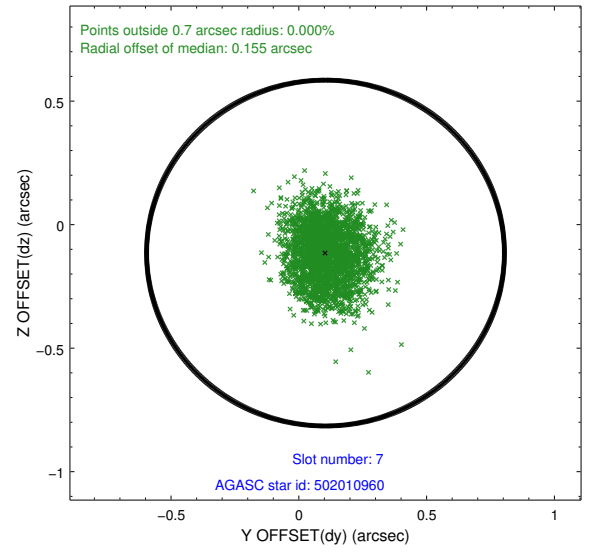
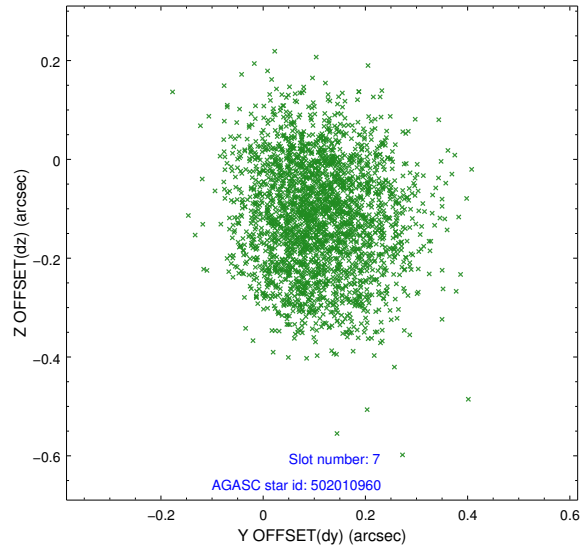
2.4.3 Slot 5



2.4.4 Slot 6

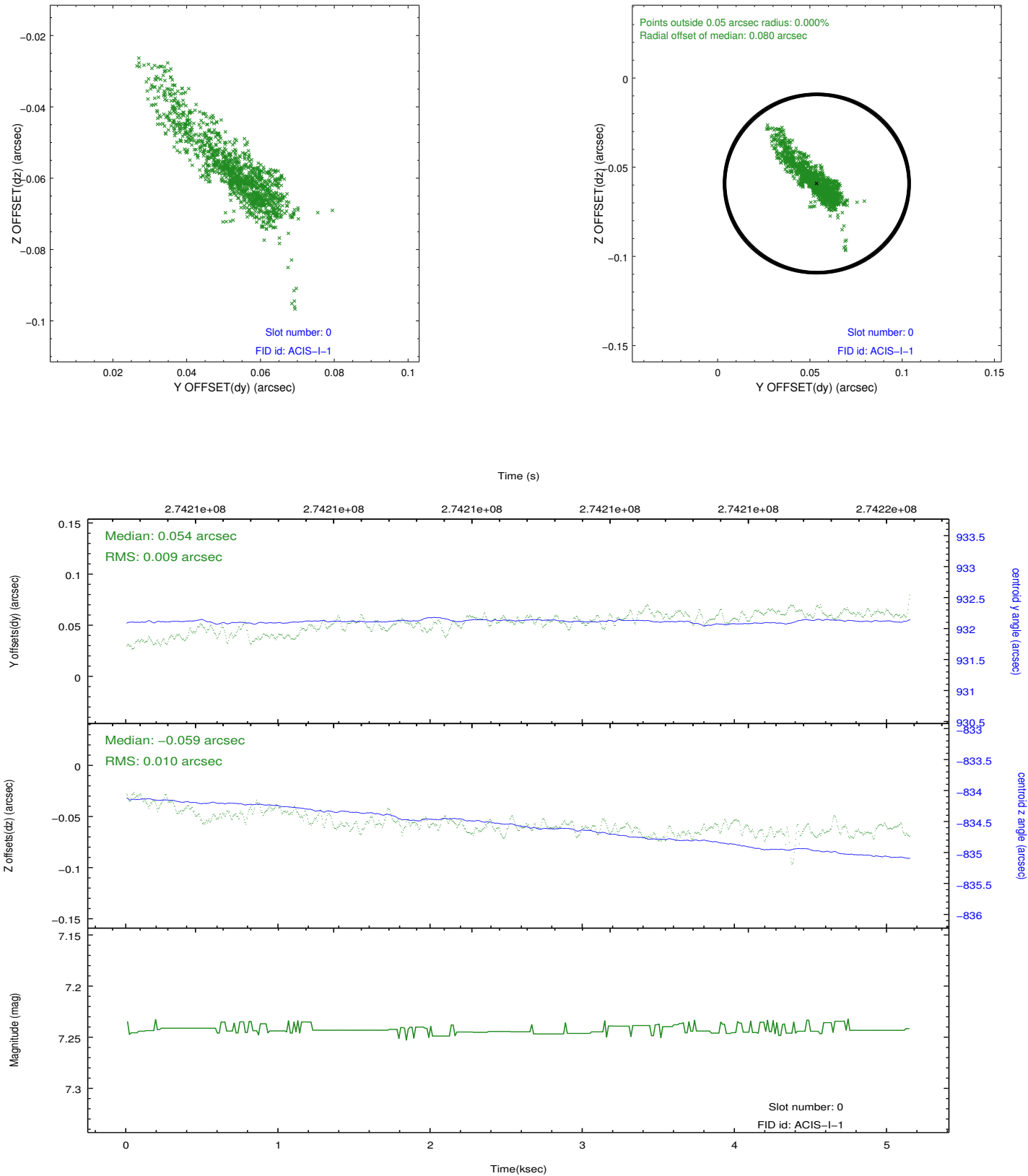


2.4.5 Slot 7

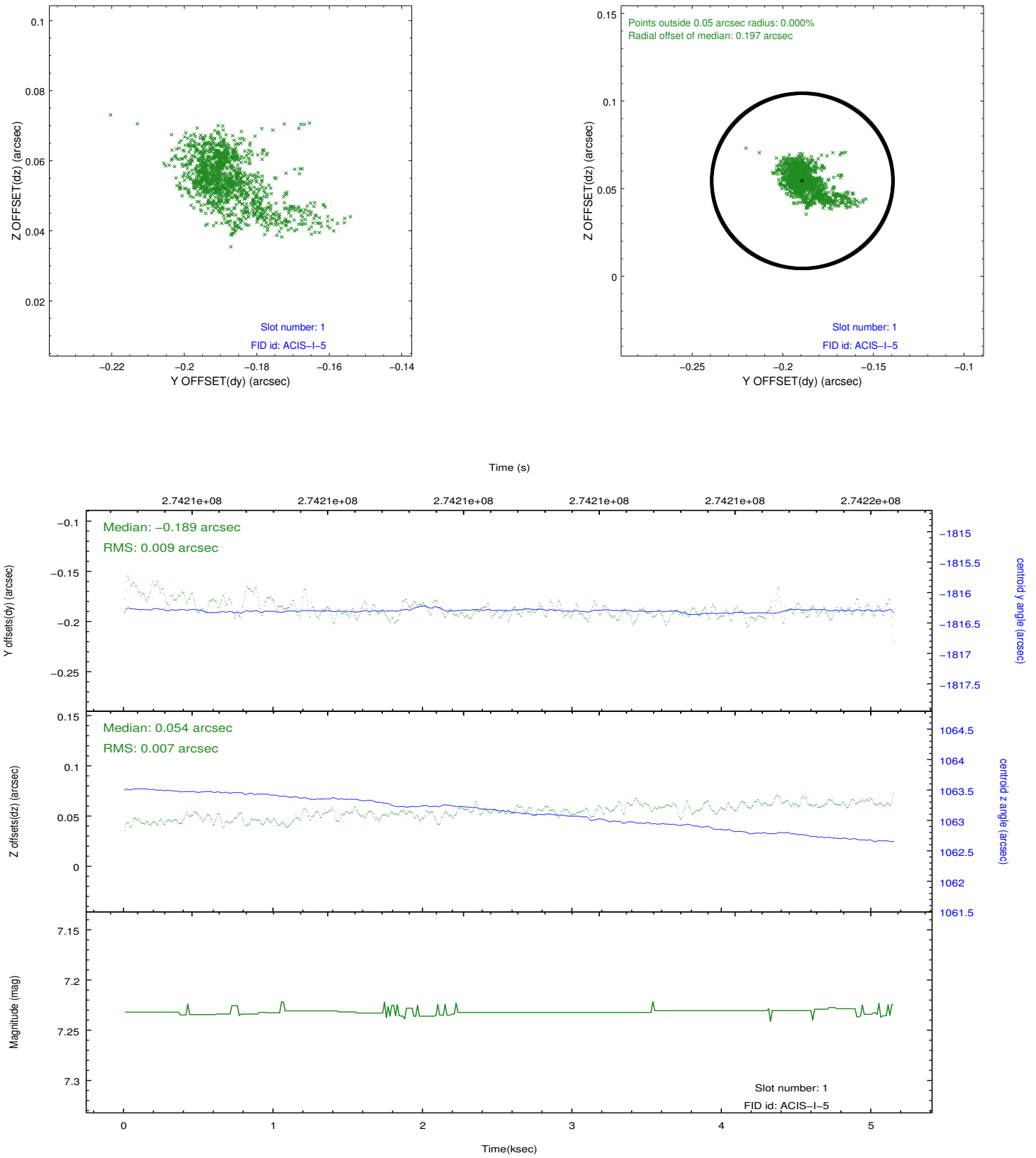


2.5 FID Slots

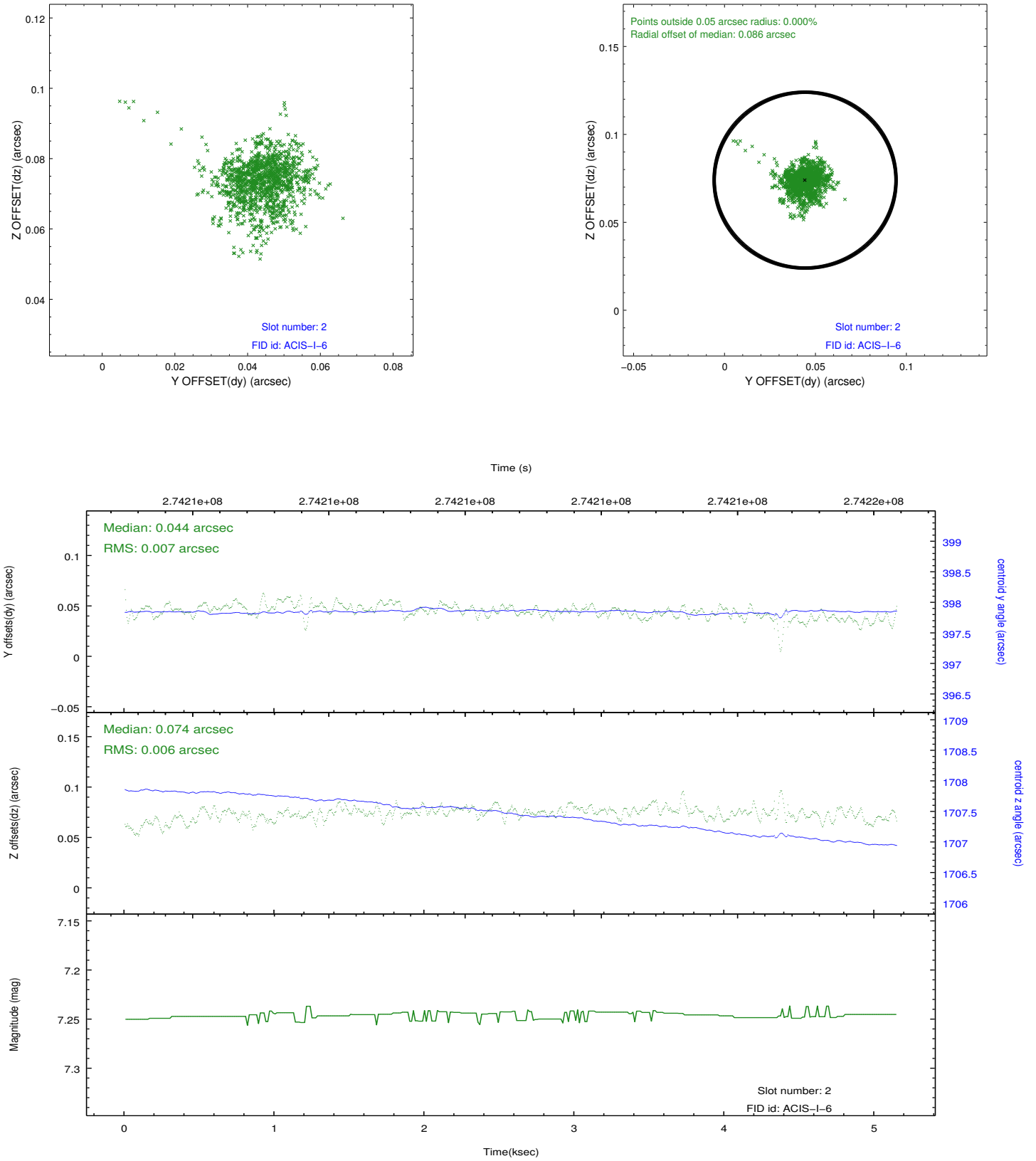
2.5.1 Slot 0



2.5.2 Slot 1



2.5.3 Slot 2



A Summary

A.1 Status

V&V Scientist	Jen Lauer
V&V Date (YYYY-MM-DD)	2012.04.09
V&V Edition	1
V&V Disposition and Status	OK
V&V Charge Time	5.13670003

A.2 Comments