

V&V Reference Report

L2 ASCDS Version : 8.4.3.1

Observation 6960 - L2 Version 2
Chandra X-Ray Center

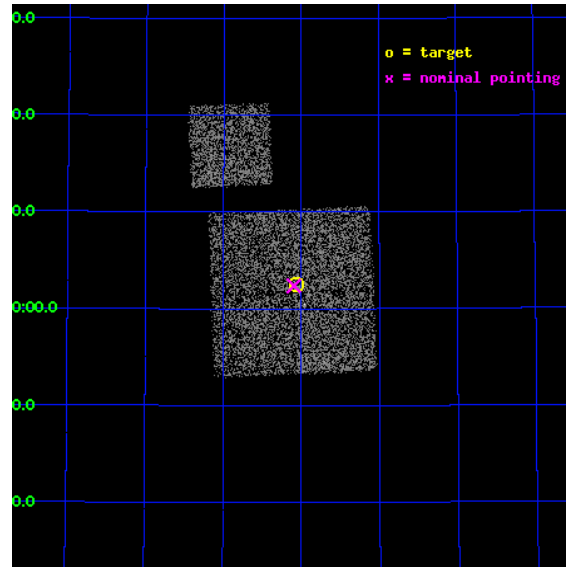
L2 Processing Date : Apr 8 2012

Contents

1	Front	2
2	OBI	3
2.1	OBI	3
2.1.1	Images	3
2.1.2	Bias	3
2.1.3	Parameters	4
2.1.4	Events	4
2.2	Compared Parameters	5
2.3	Aspect	6
2.4	Star Slots	9
2.4.1	Slot 3	9
2.4.2	Slot 4	10
2.4.3	Slot 5	11
2.4.4	Slot 6	12
2.4.5	Slot 7	13
2.5	FID Slots	14
2.5.1	Slot 0	14
2.5.2	Slot 1	15
2.5.3	Slot 2	16
A	Summary	17
A.1	Status	17
A.2	Comments	17

1 Front

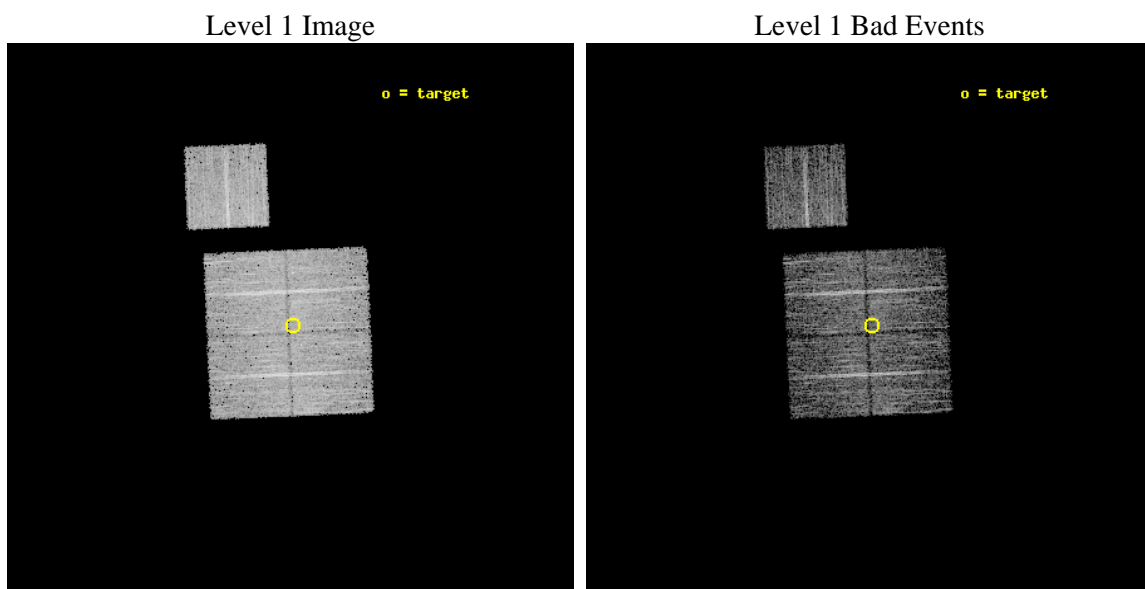
seq_num	800593	Sequence number
obs_id	6960	Observation id
title	A Search for the Origin of Ultrahigh Energy Cosmic Rays	Proposal t
observer	Prof. David Helfand	Principal investigator
object	P4	Source name
dtcycle	0	
cycle	P	events from which exps? Prim/Second/Both
ra_targ	170.016	Observer's specified target RA [deg]
dec_targ	57.0417	Observer's specified target Dec [deg]
ra_nom	170.02368608009	Nominal RA [deg]
dec_nom	57.039793987974	Nominal Dec [deg]
roll_nom	357.56813610416	Nominal Roll [deg]
revision	2	Processing version of data
ontime	4772.7498660684	Sum of GTIs [s]
livetime	4710.3903754208	Livetime [s]
ontime0	4772.6267659664	Sum of GTIs [s]
ontime1	4772.6678059697	Sum of GTIs [s]
ontime2	4772.7088260651	Sum of GTIs [s]
ontime3	4772.7498660684	Sum of GTIs [s]
ontime6	4772.5857259631	Sum of GTIs [s]
l2events	14822	Number of level 2 events



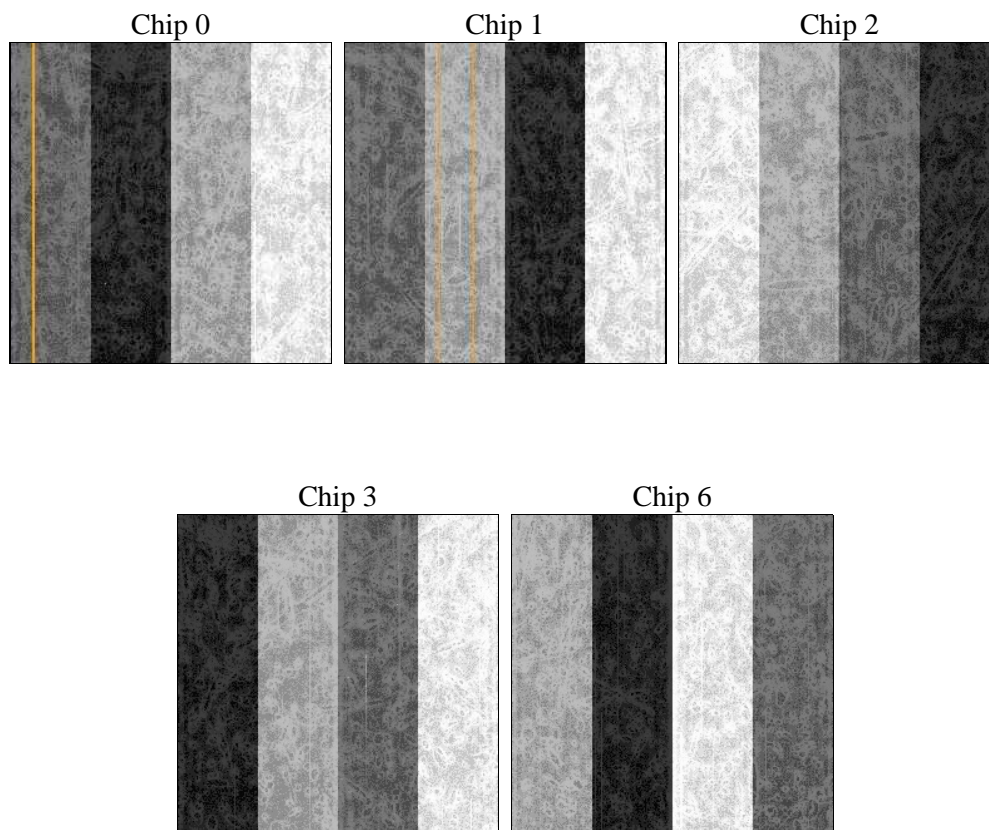
2 OBI

2.1 OBI

2.1.1 Images



2.1.2 Bias



2.1.3 Parameters

obi_num	0	Obi number	sched_exp_time	5000.000000	[s] Scheduled observation exposure time
ascdsver	8.4.3.1	Processing system revision	ontime	4772.7498660684	Sum of GTIs [s]
caldsver	4.4.9	 	ontime0	4772.6267659664	Sum of GTIs [s]
date	2012-04-08T19:30:32	Date and time of file creation	ontime1	4772.6678059697	Sum of GTIs [s]
revision	2	Processing version of data	ontime2	4772.7088260651	Sum of GTIs [s]
			ontime3	4772.7498660684	Sum of GTIs [s]
			ontime6	4772.5857259631	Sum of GTIs [s]
			l1events	181158	Number of level 1 events

2.1.4 Events

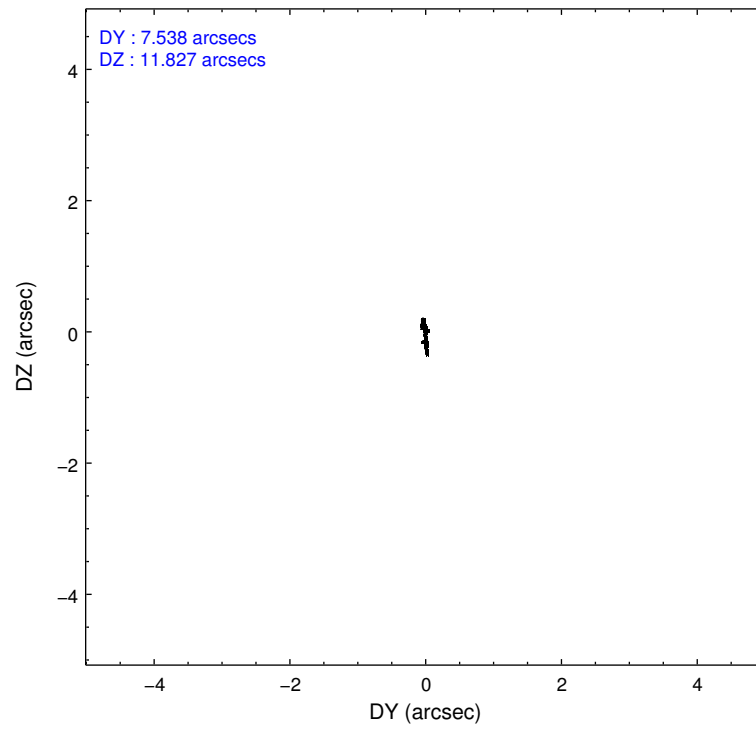
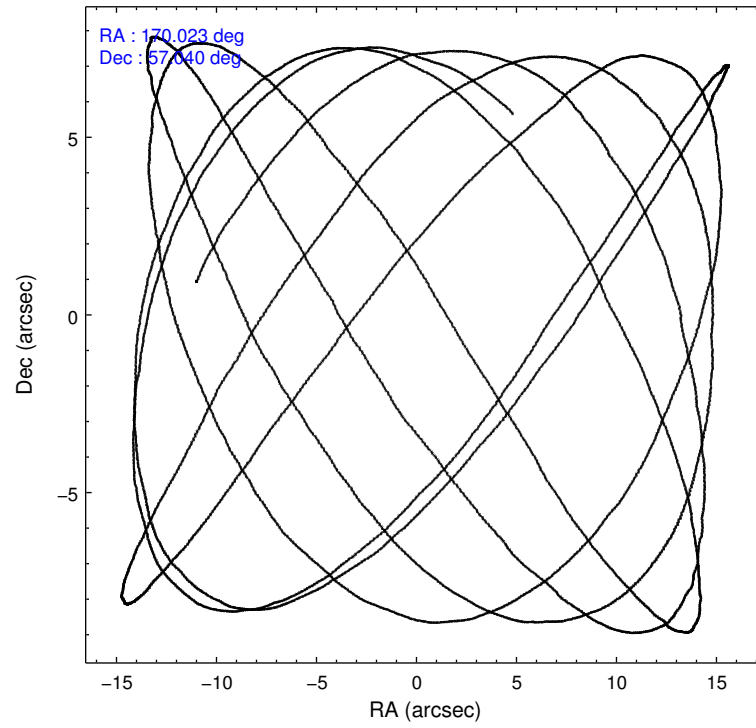
	ccd 0	ccd 1	ccd 2	ccd 3	ccd 6
level 1 events	33983	35119	39092	35664	37300
rejected events	30518	31154	35634	32203	33751
rejected %	89%	88%	91%	90%	90%

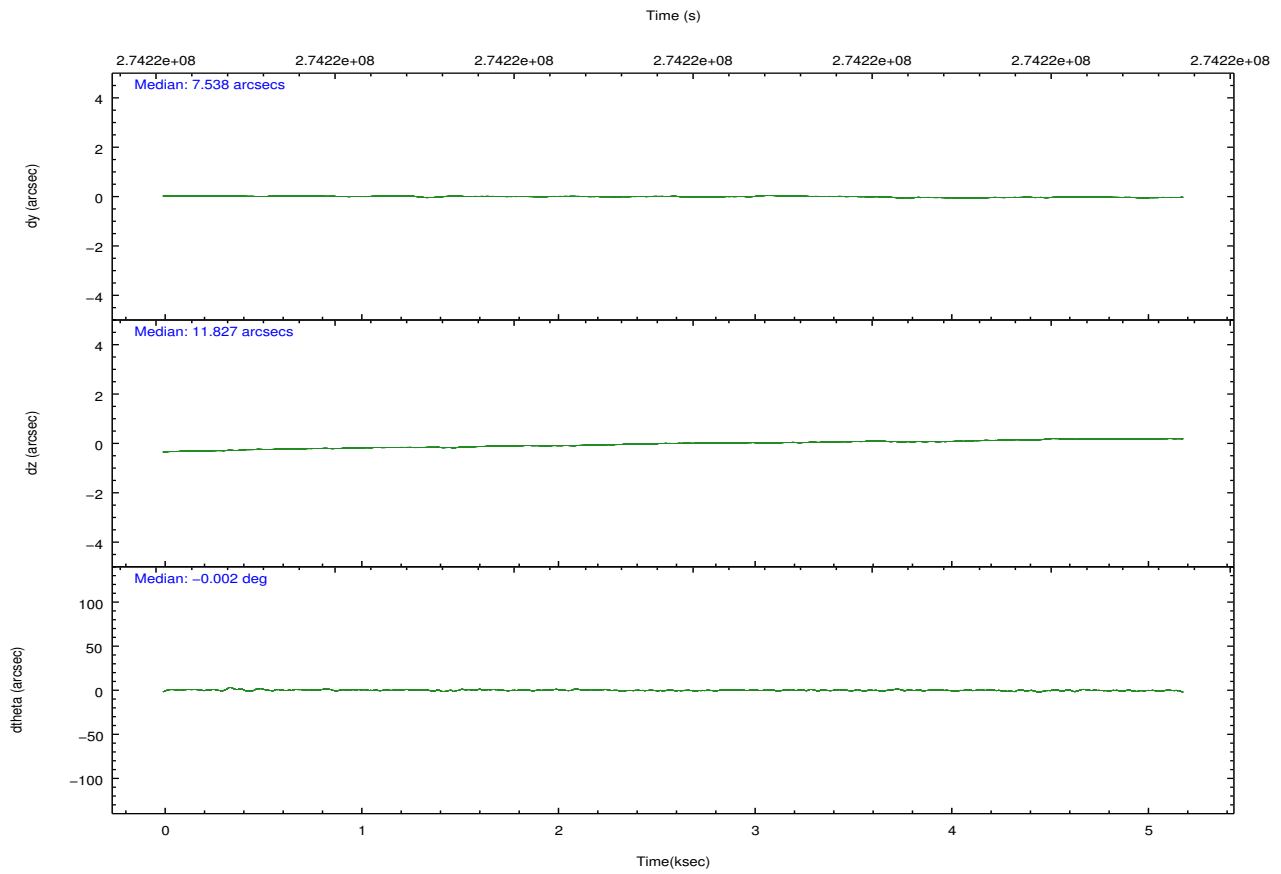
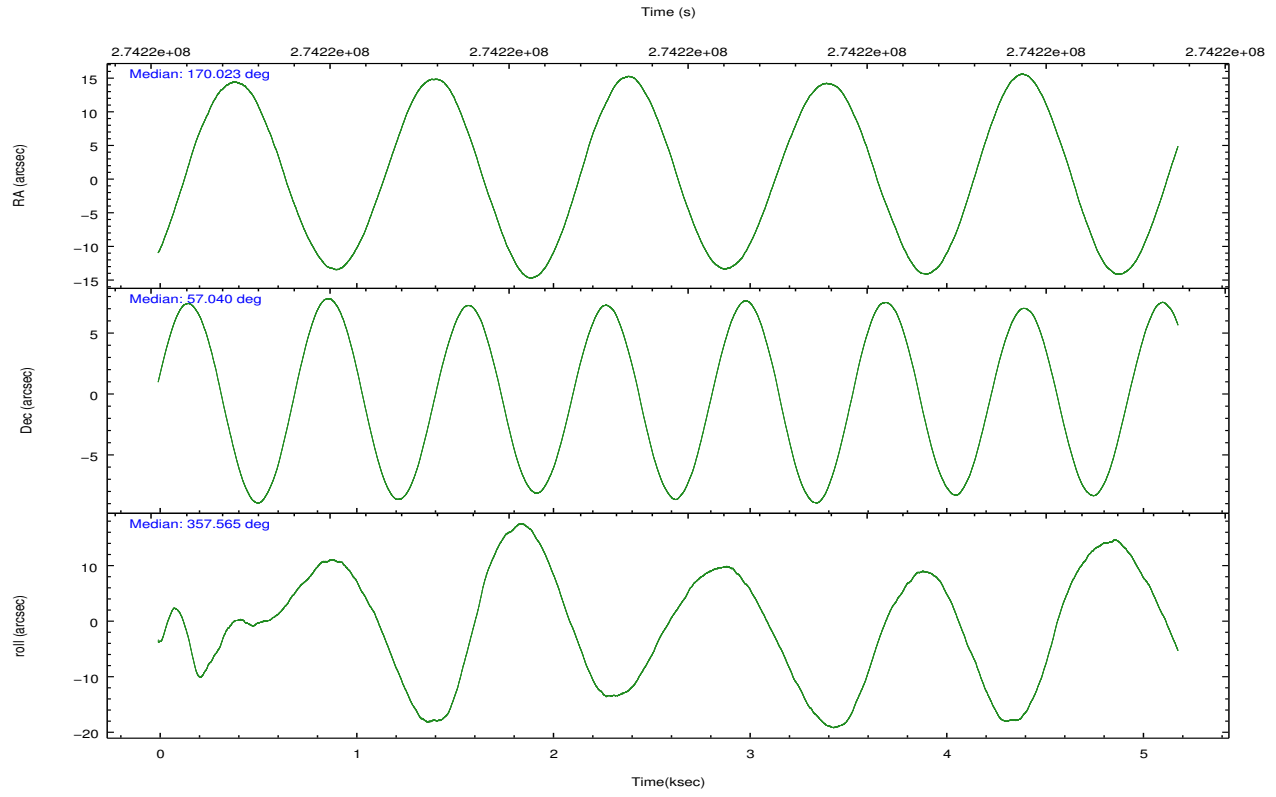
	ccd 0	ccd 1	ccd 2	ccd 3	ccd 6
grade 0 events	1234	1476	1220	1275	1226
	3%	4%	3%	3%	3%
grade 1 events	15	24	21	19	17
	0%	0%	0%	0%	0%
grade 2 events	824	903	838	729	803
	2%	2%	2%	2%	2%
grade 3 events	404	420	369	370	396
	1%	1%	0%	1%	1%
grade 4 events	360	390	426	378	382
	1%	1%	1%	1%	1%
grade 5 events	1214	1386	1204	1445	1451
	3%	3%	3%	4%	3%
grade 6 events	645	779	610	713	750
	1%	2%	1%	1%	2%
grade 7 events	29287	29741	34404	30735	32275
	86%	84%	88%	86%	86%

2.2 Compared Parameters

Parameter	Planned	Actual	Parameter	Planned	Actual
Instrument	ACIS	ACIS	Obspar format version number	7	7
Detector	ACIS-01236	ACIS-01236	Obspar file type	PREDICTED	ACTUAL
Grating	NONE	NONE	Obspar update status	NONE	UPDATED
Data mode	VFAINT	VFAINT	Number of optional ACIS chips dropped	0	0
Observation mode	POINTING	POINTING	On-chip summing requested	N	N
[deg] Pointing RA	169.979191	170.0236860800939	Subarray requested	NONE	NONE
[deg] Pointing Dec	57.026940	57.03979398797416	Alternating exposures requested	N	N
[deg] Pointing Roll	357.396795	357.568136104164	[s] Primary exposure time	0.000000	3.1
[mm] SIM focus pos	-0.782348	-0.7809083437167272			
[mm] SIM defocus	0	0.001439871863259334			
[mm] SIM translation stage pos	-233.592463	-233.5874344608287			
[mm] SIM translation stage offset	0	-0.005018542100998502			
[s] Observation start time (MET)	274215472.184000	274215071.20595			
Observation start date	2006-09-09T18:56:47	2006-09-09T18:51:11			
[s] Observation end time (MET)	274220472.184000	274220605.69371			
Observation end date	2006-09-09T20:20:07	2006-09-09T20:23:25			
Read mode	TIMED	TIMED			

2.3 Aspect



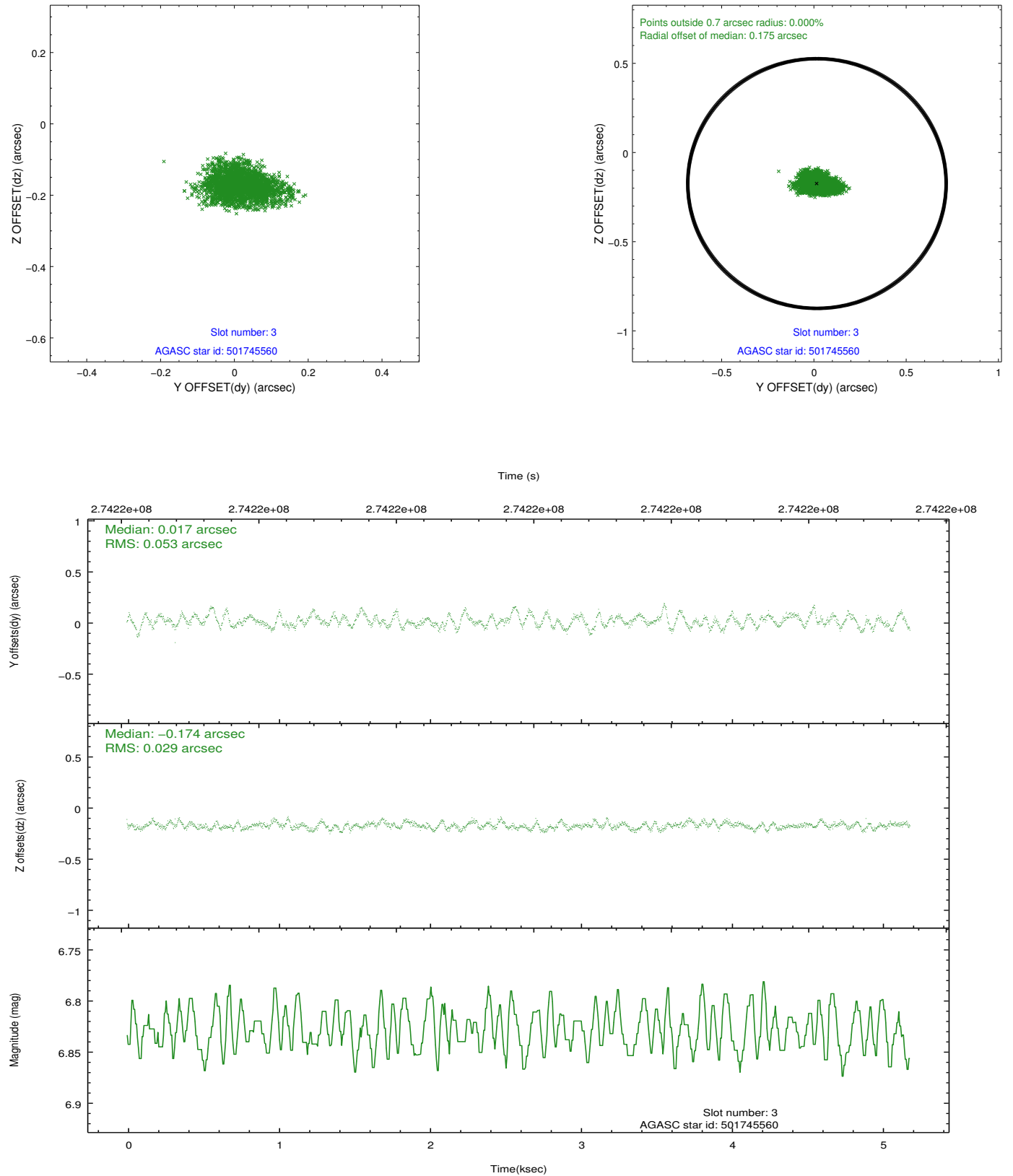


Slot Statistics

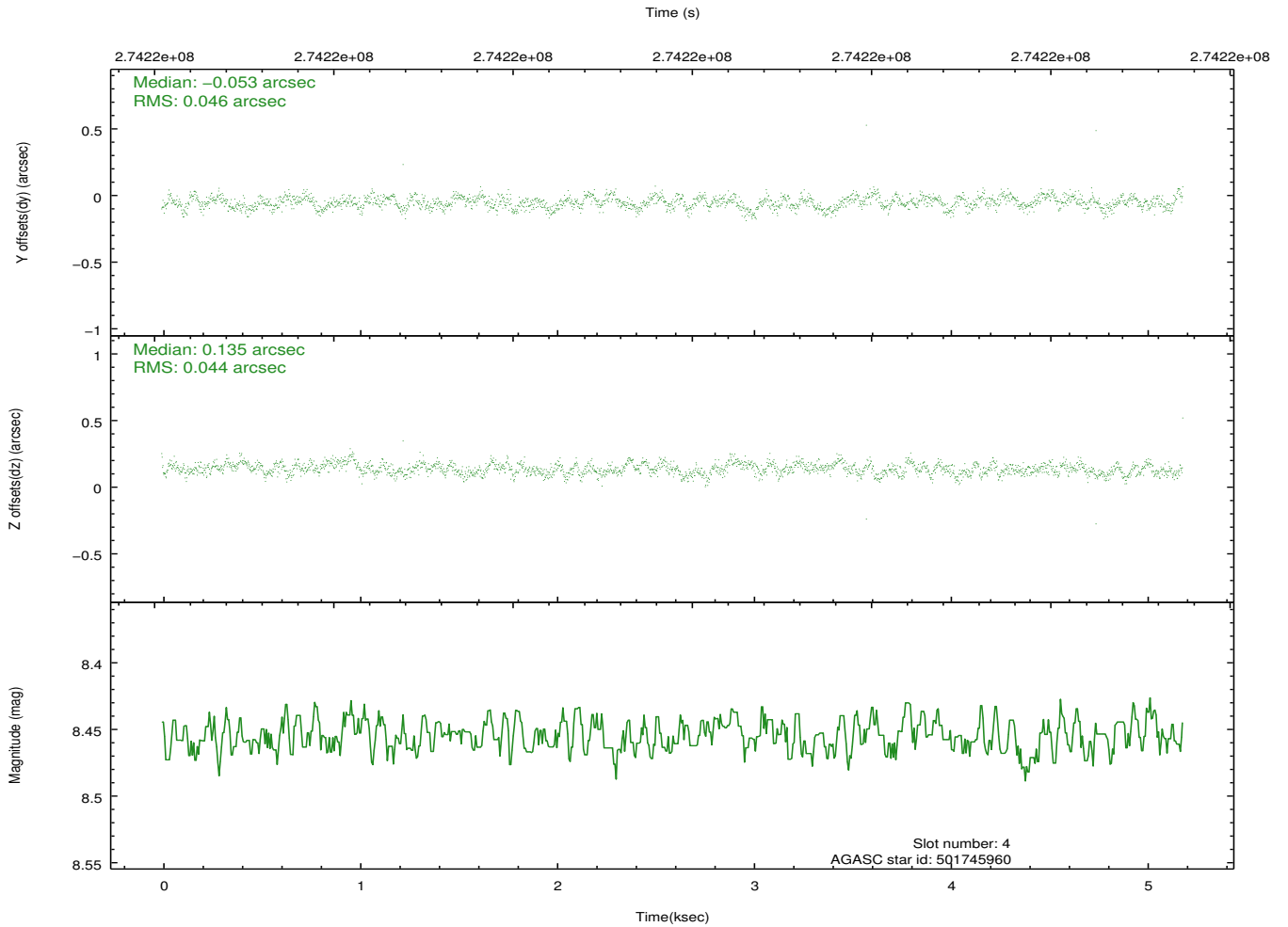
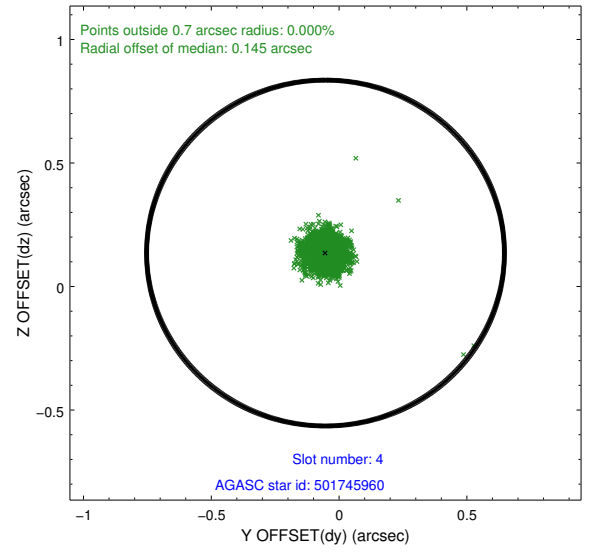
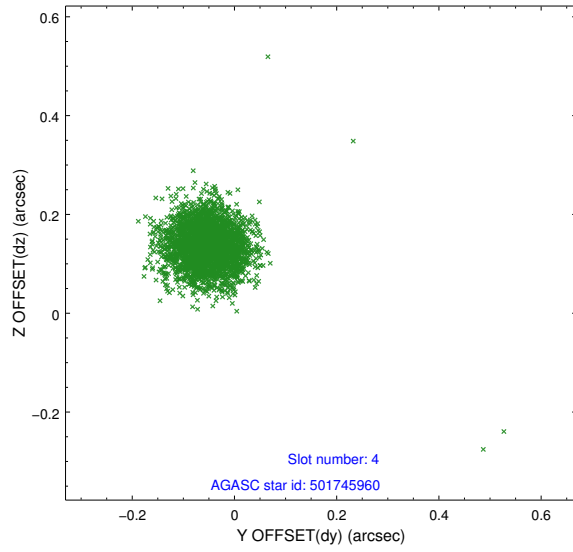
slot	status	id	mag	n_pts	med_dy	med_dz	dr1	dr2	ra	dec	mean_y	mean_z
0	FID	ACIS-I-1	7.24	1265	-0.007	-0.081	0.009	0.016	0.000000	0.000000	932.12	-835.40
1	FID	ACIS-I-4	7.17	1264	0.143	0.083	0.008	0.015	0.000000	0.000000	2152.98	1063.98
2	FID	ACIS-I-5	7.22	1265	-0.236	0.069	0.008	0.015	0.000000	0.000000	-1814.59	1063.17
3	GUIDE	501745560	6.83	2531	0.017	-0.174	0.063	0.108	170.455367	57.074858	922.76	217.64
4	GUIDE	501745960	8.45	2531	-0.053	0.135	0.063	0.101	170.066430	56.606700	242.13	-1503.26
5	GUIDE	501748320	9.52	2522	-0.008	0.117	0.089	0.143	170.966165	57.350324	1862.34	1263.24
6	GUIDE	502137280	9.99	2527	0.009	-0.017	0.140	0.221	170.972433	57.663007	1806.60	2388.46
7	GUIDE	502137856	10.12	2527	0.039	-0.058	0.133	0.212	169.016576	57.682544	-1957.37	2286.97

2.4 Star Slots

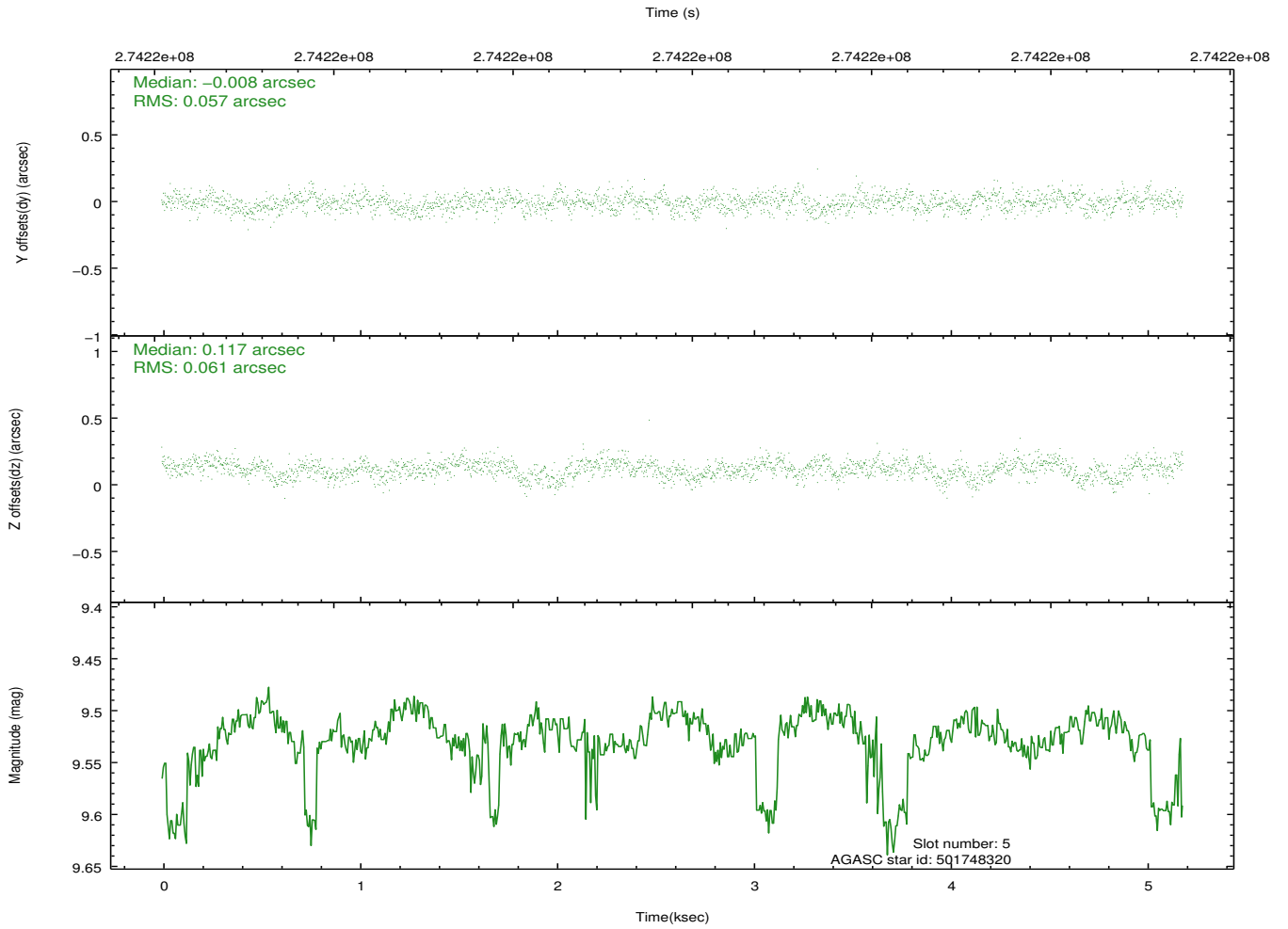
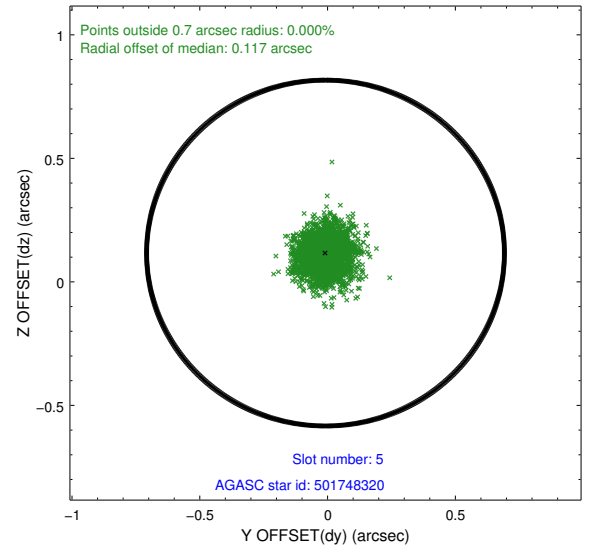
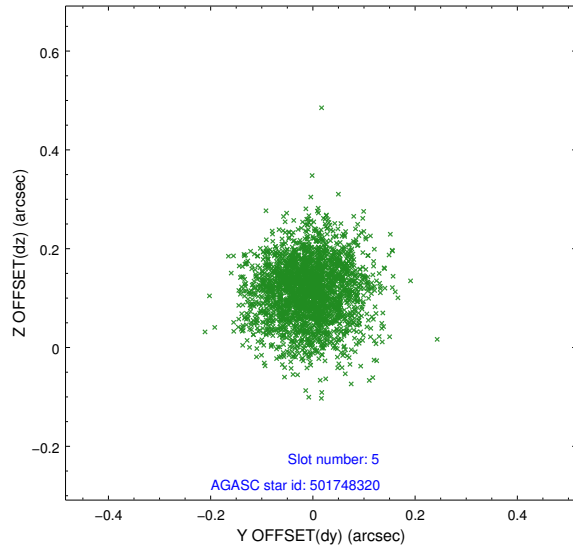
2.4.1 Slot 3



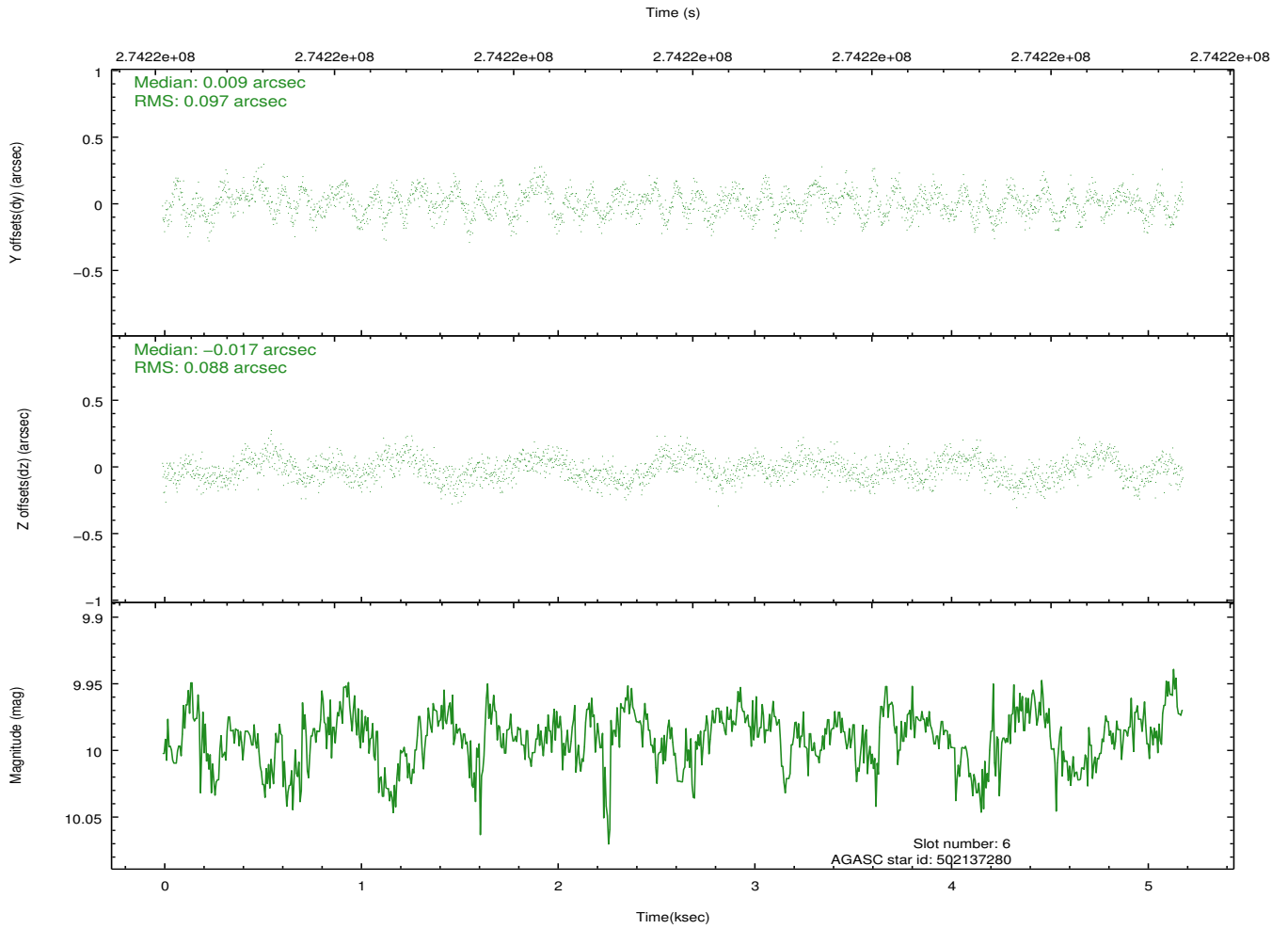
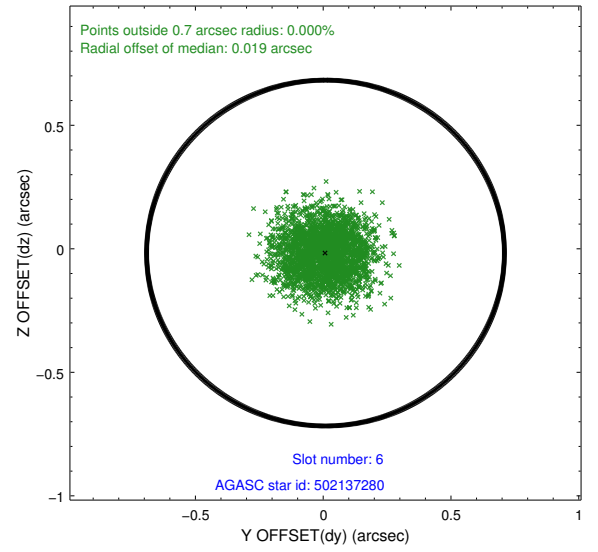
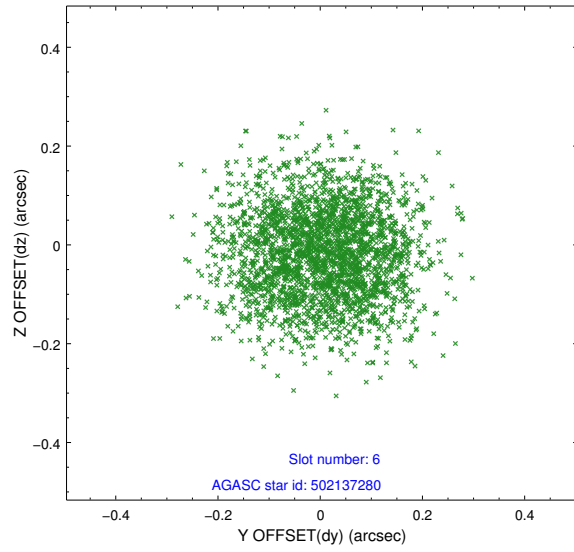
2.4.2 Slot 4



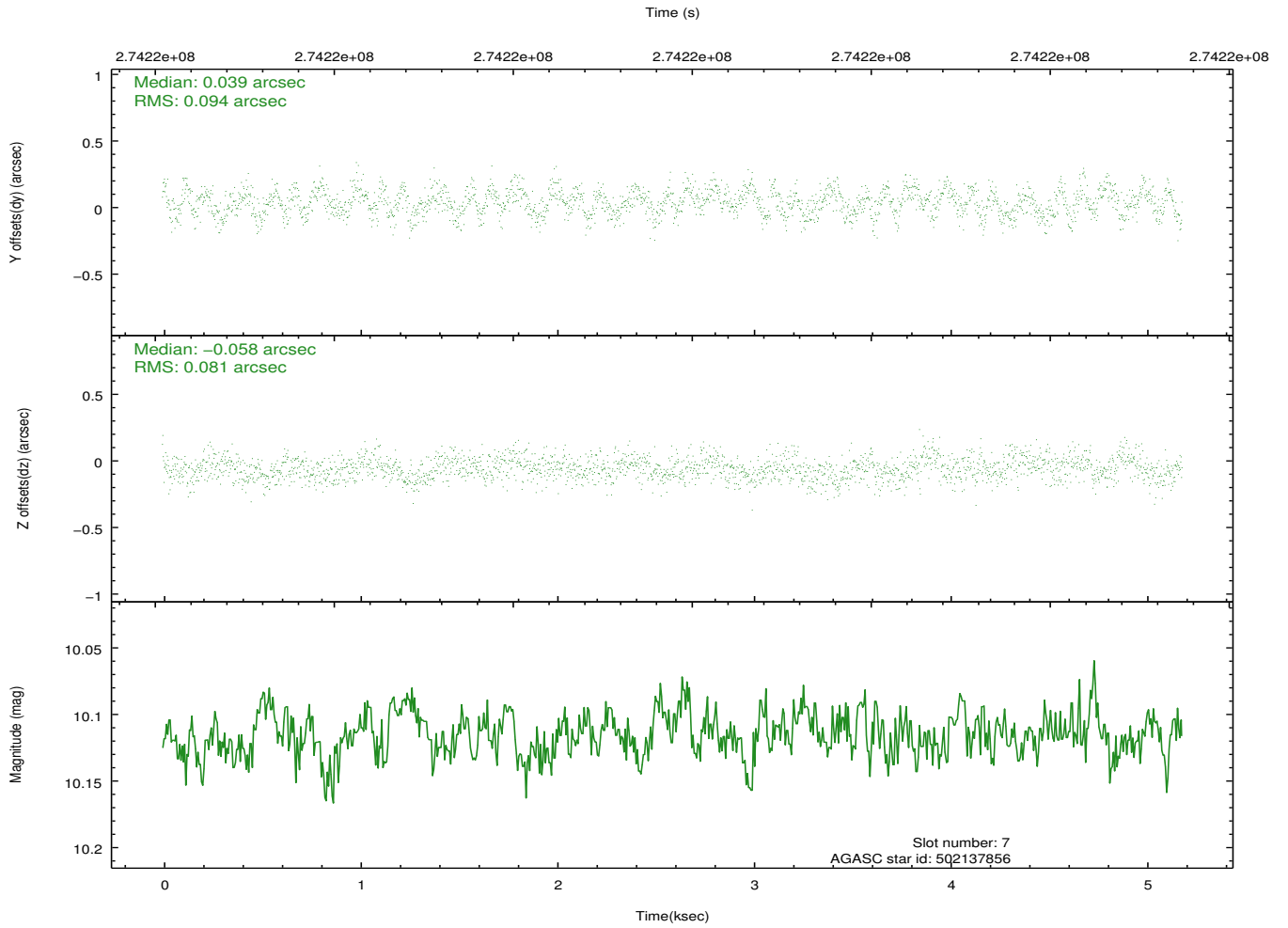
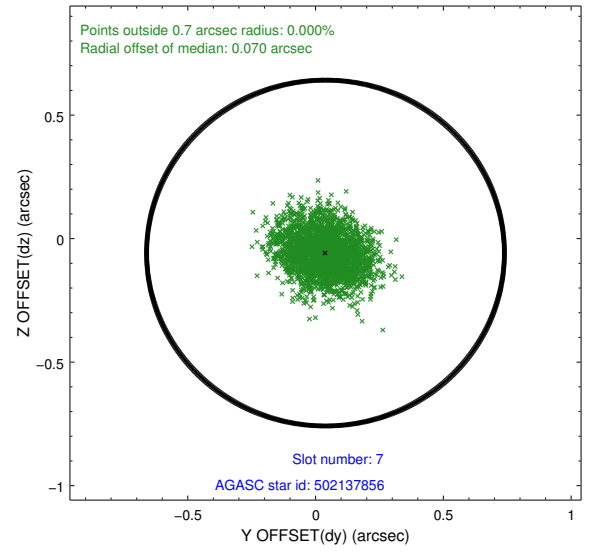
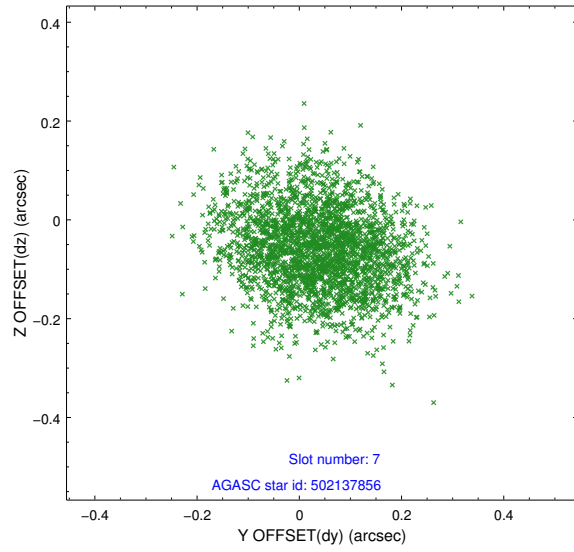
2.4.3 Slot 5



2.4.4 Slot 6

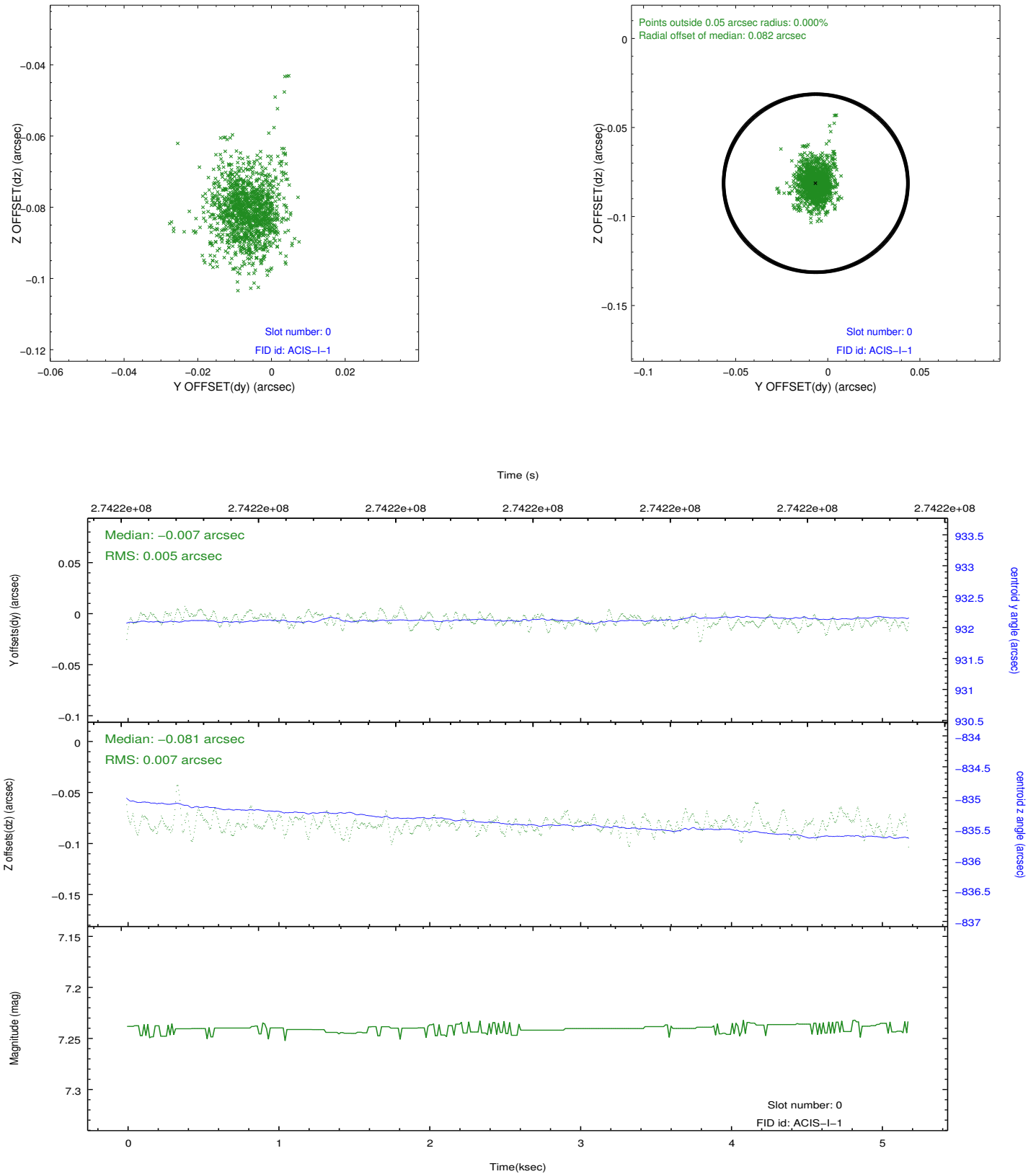


2.4.5 Slot 7

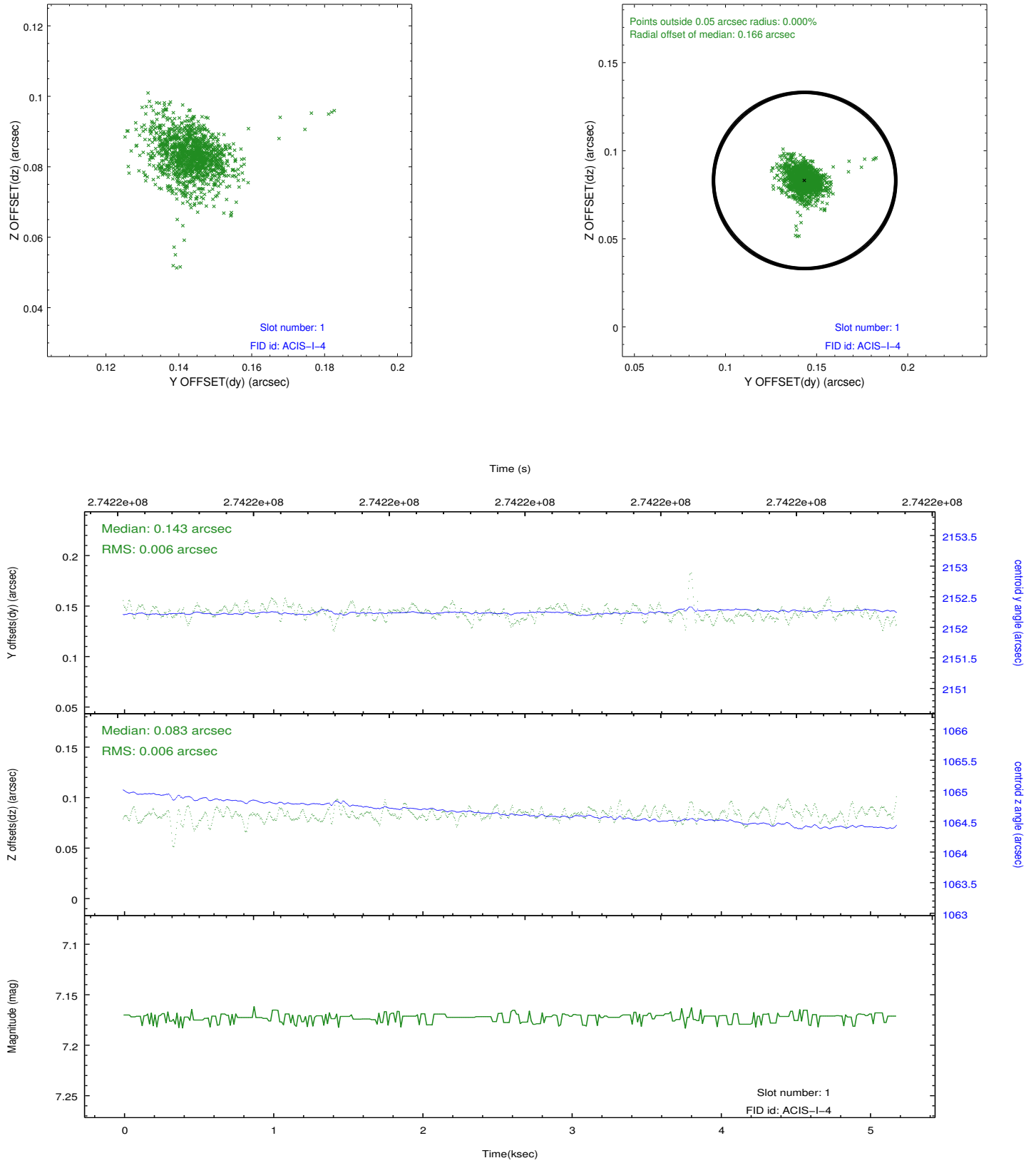


2.5 FID Slots

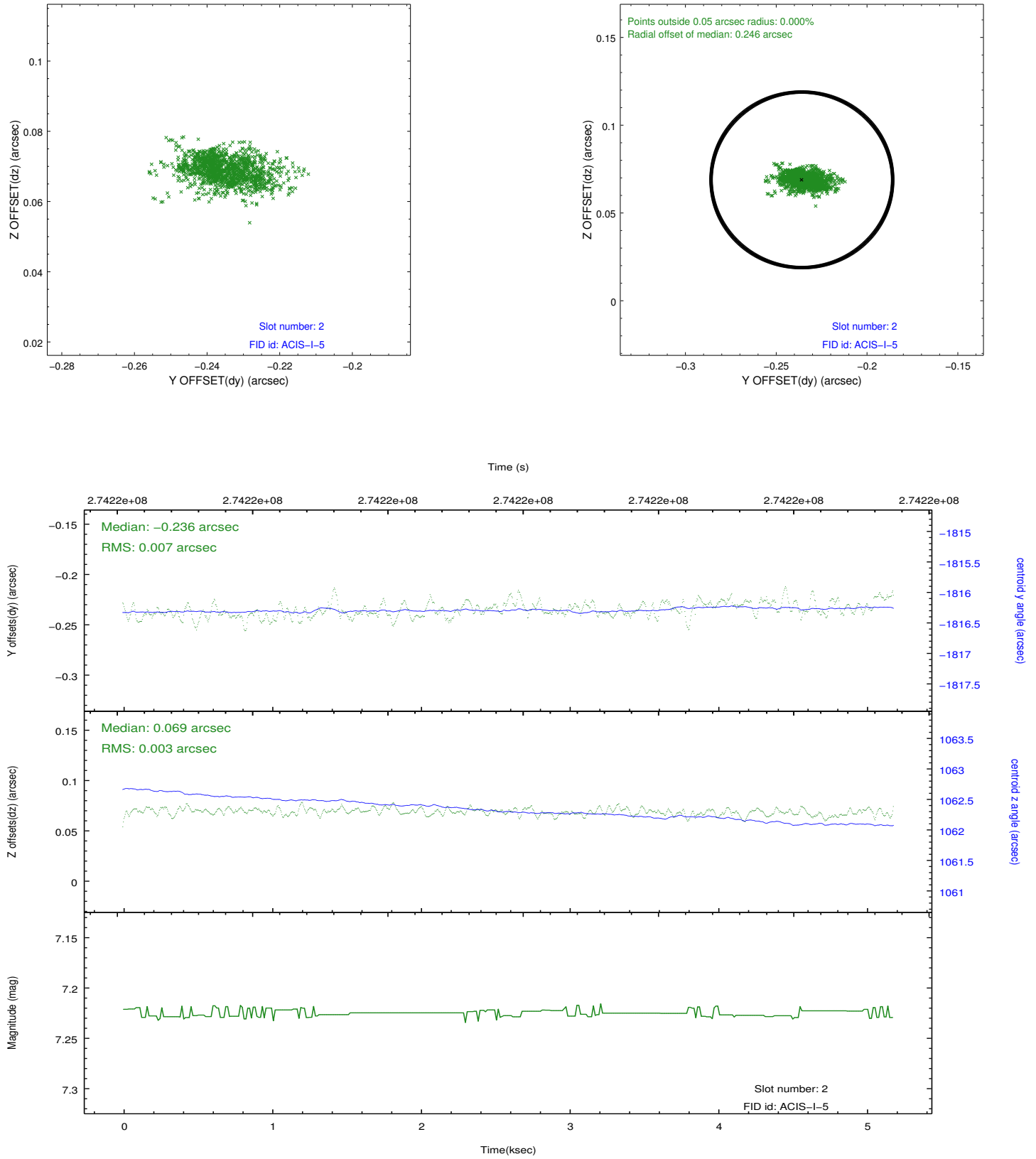
2.5.1 Slot 0



2.5.2 Slot 1



2.5.3 Slot 2



A Summary

A.1 Status

V&V Scientist	Jen Lauer
V&V Date (YYYY-MM-DD)	2012.04.09
V&V Edition	1
V&V Disposition and Status	OK
V&V Charge Time	4.77400003

A.2 Comments