

V&V Reference Report

L2 ASCDS Version : 8.4.3.1

Observation 6950 - L2 Version 2
Chandra X-Ray Center

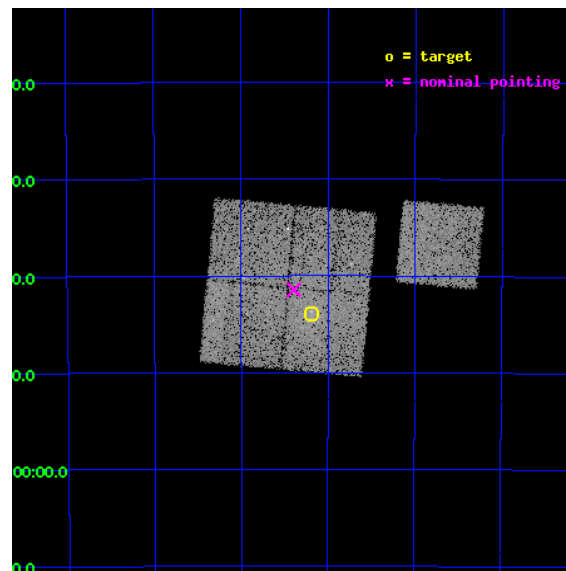
L2 Processing Date : Apr 6 2012

Contents

1	Front	2
2	OBI	3
2.1	OBI	3
2.1.1	Images	3
2.1.2	Bias	3
2.1.3	Parameters	4
2.1.4	Events	4
2.2	Compared Parameters	5
2.3	Aspect	6
2.4	Star Slots	9
2.4.1	Slot 3	9
2.4.2	Slot 4	10
2.4.3	Slot 5	11
2.4.4	Slot 6	12
2.4.5	Slot 7	13
2.5	FID Slots	14
2.5.1	Slot 0	14
2.5.2	Slot 1	15
2.5.3	Slot 2	16
A	Summary	17
A.1	Status	17
A.2	Comments	17

1 Front

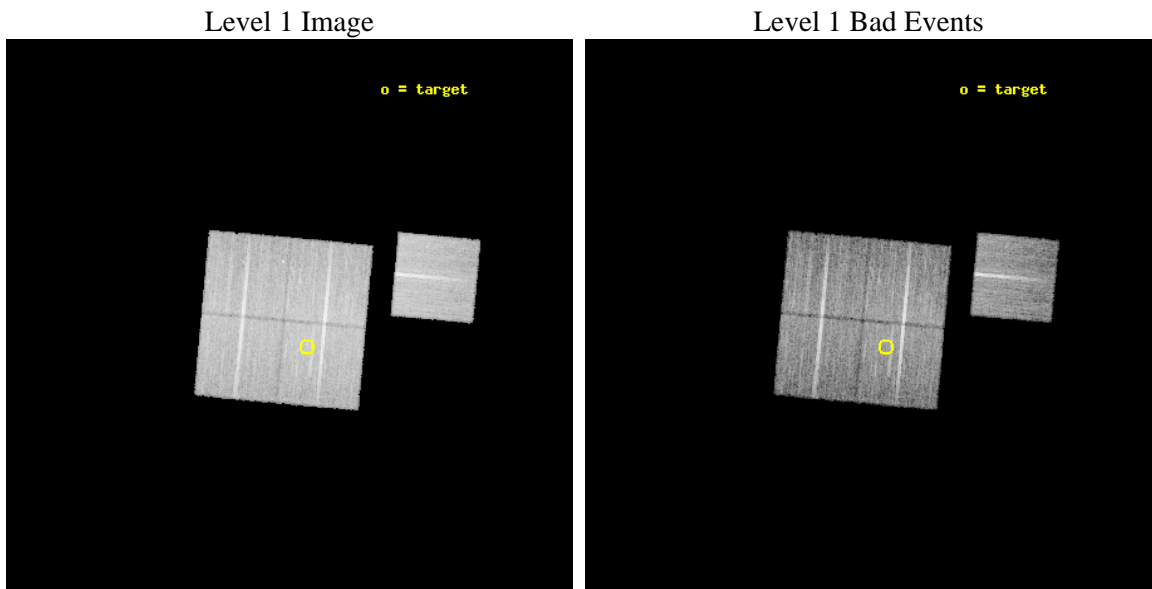
seq_num	800583	Sequence number
obs_id	6950	Observation id
title	Chandra Study of the Structure of the Southern Part of the Horologium Supercluster	Proposal title
observer	Dr. Hans Boehringer	Principal investigator
object	A3074	Source name
dtcycle	0	
cycle	P	events from which exps? Prim/Second/Both
ra_targ	44.545833	Observer's specified target RA [deg]
dec_targ	-52.731389	Observer's specified target Dec [deg]
ra_nom	44.598135288988	Nominal RA [deg]
dec_nom	-52.690830579826	Nominal Dec [deg]
roll_nom	95.250312934536	Nominal Roll [deg]
revision	2	Processing version of data
ontime	15487.55917871	Sum of GTIs [s]
livetime	15285.202816265	Livetime [s]
ontime0	15487.559158742	Sum of GTIs [s]
ontime1	15487.559158862	Sum of GTIs [s]
ontime2	15487.559158742	Sum of GTIs [s]
ontime3	15487.55917871	Sum of GTIs [s]
ontime6	15481.277178288	Sum of GTIs [s]
l2events	51822	Number of level 2 events



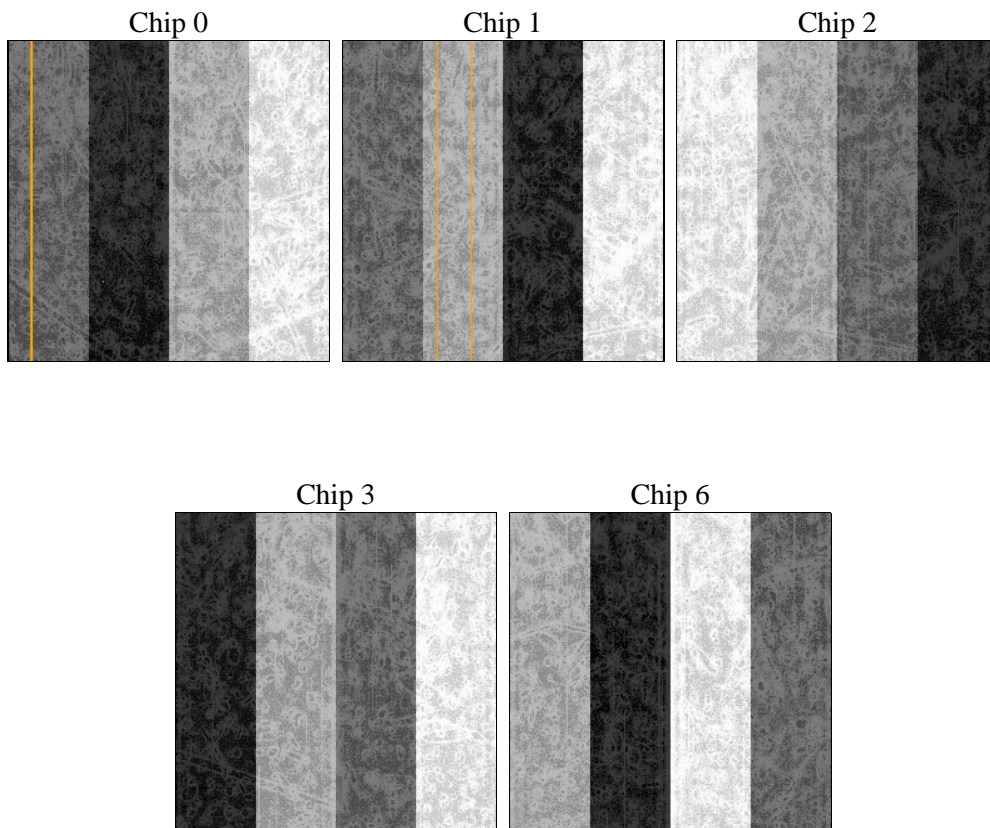
2 OBI

2.1 OBI

2.1.1 Images



2.1.2 Bias



2.1.3 Parameters

obi_num	0	Obi number	sched_exp_time	15368.029000	[s] Scheduled observation exposure time
ascdsver	8.4.3.1	Processing system revision	ontime	15487.55917871	Sum of GTIs [s]
caldsver	4.4.9	 	ontime0	15487.559158742	Sum of GTIs [s]
date	2012-04-06T19:23:06	Date and time of file creation	ontime1	15487.559158862	Sum of GTIs [s]
revision	2	Processing version of data	ontime2	15487.559158742	Sum of GTIs [s]
			ontime3	15487.55917871	Sum of GTIs [s]
			ontime6	15481.277178288	Sum of GTIs [s]
			l1events	579016	Number of level 1 events

2.1.4 Events

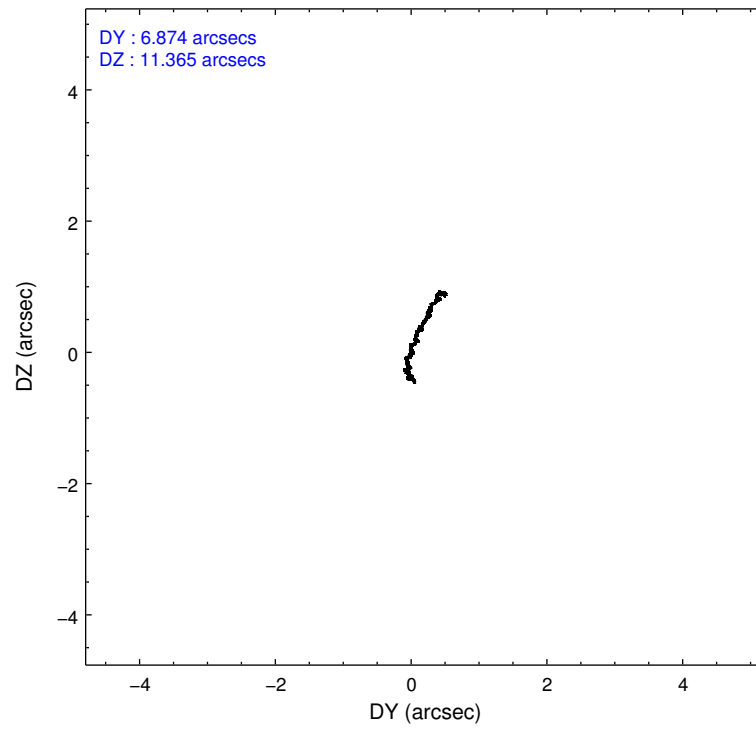
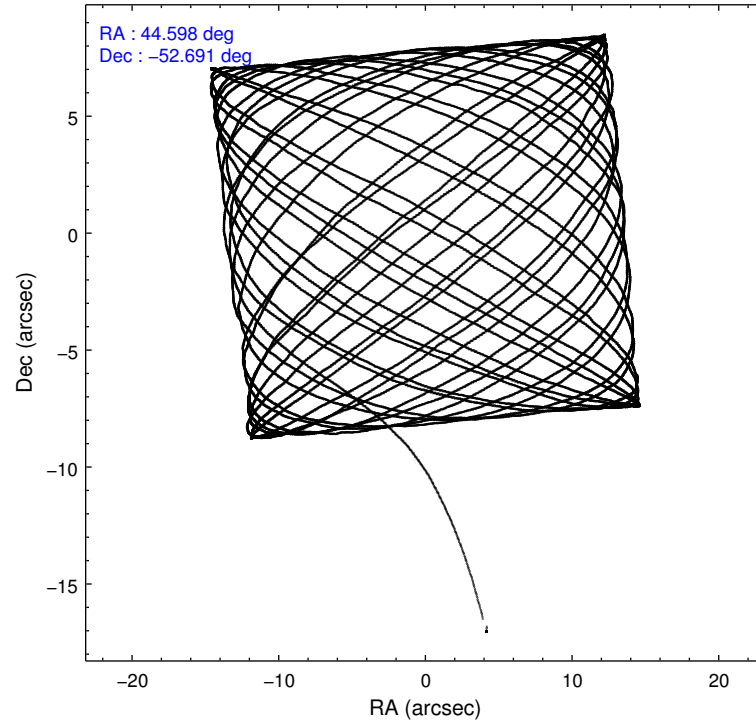
	ccd 0	ccd 1	ccd 2	ccd 3	ccd 6
level 1 events	111794	108682	124016	116323	118201
rejected events	99528	95294	112062	103849	106186
rejected %	89%	87%	90%	89%	89%

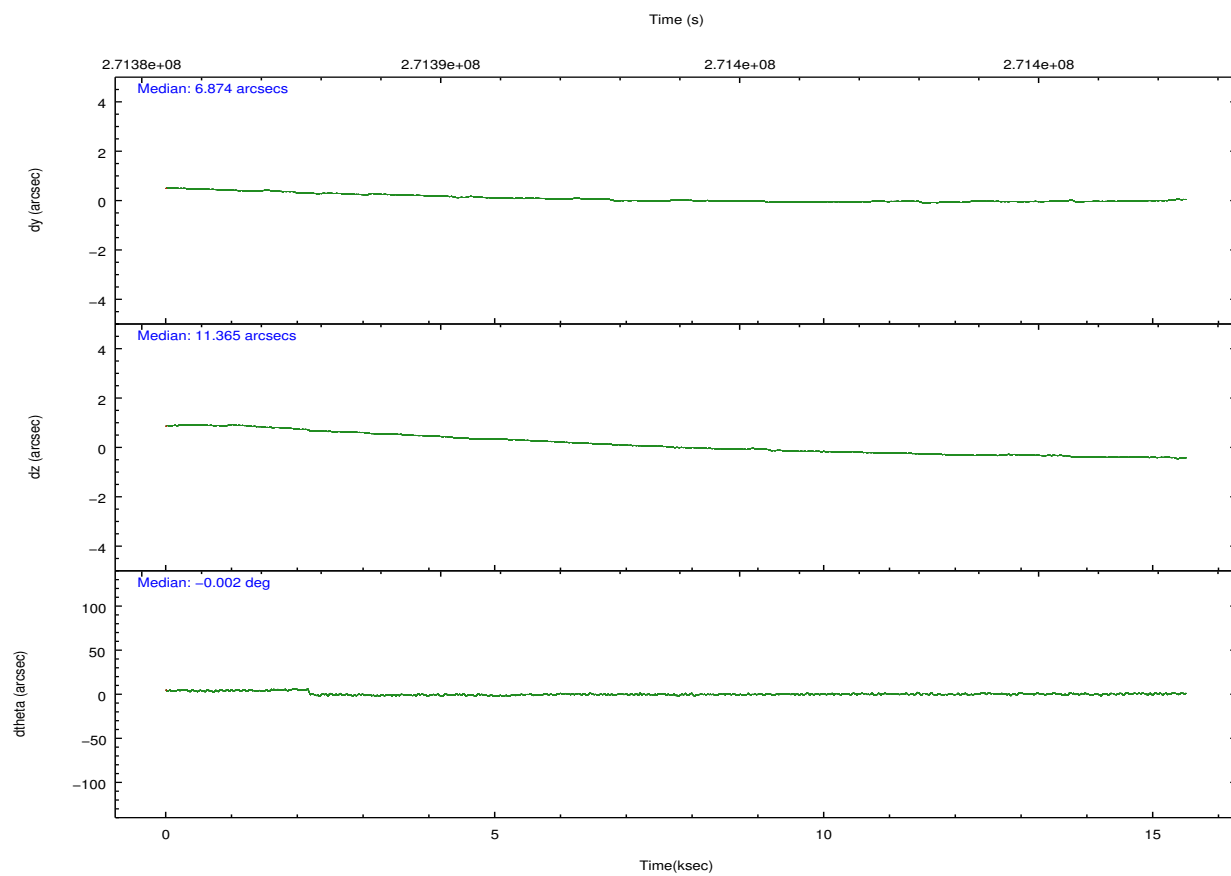
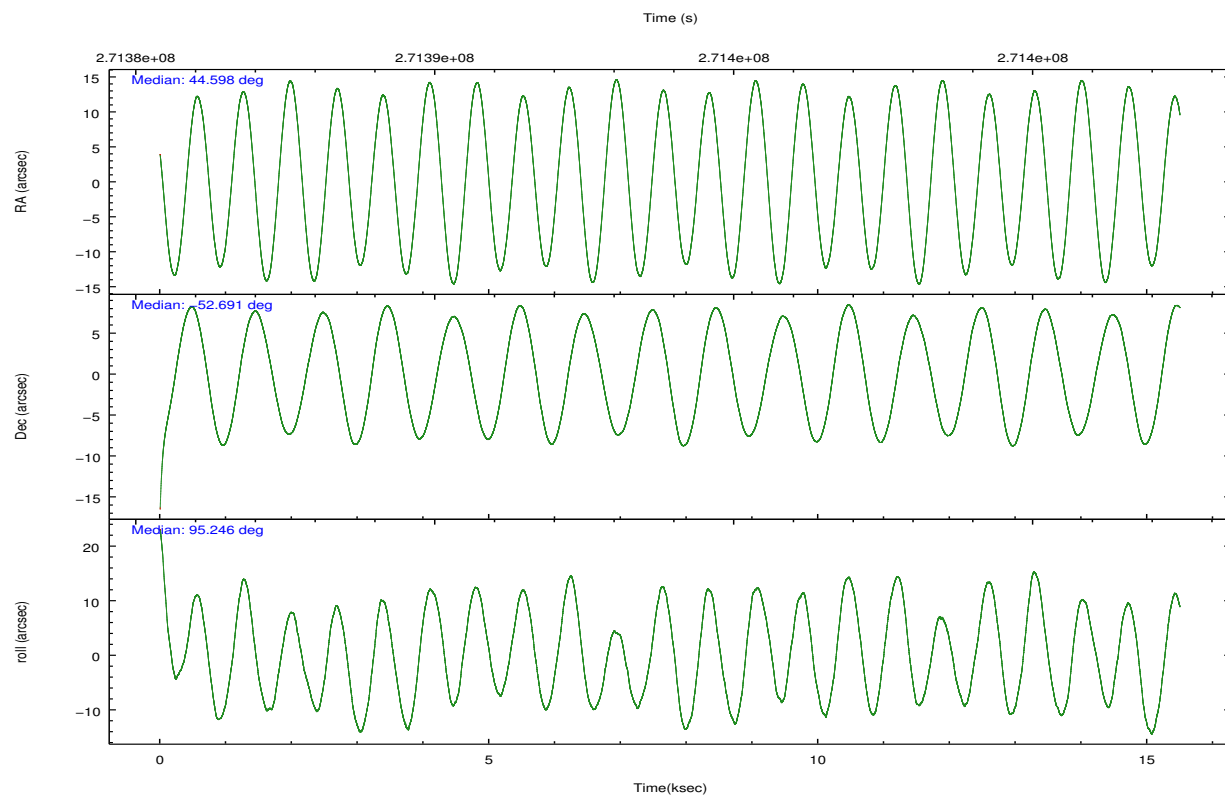
	ccd 0	ccd 1	ccd 2	ccd 3	ccd 6
grade 0 events	4699	5159	4679	5285	4301
	4%	4%	3%	4%	3%
grade 1 events	57	50	60	61	54
	0%	0%	0%	0%	0%
grade 2 events	2833	2865	2692	2515	2538
	2%	2%	2%	2%	2%
grade 3 events	1290	1415	1274	1344	1330
	1%	1%	1%	1%	1%
grade 4 events	1224	1458	1252	1262	1335
	1%	1%	1%	1%	1%
grade 5 events	3960	4375	3596	4633	4502
	3%	4%	2%	3%	3%
grade 6 events	2284	2551	2125	2113	2569
	2%	2%	1%	1%	2%
grade 7 events	95447	90809	108338	99110	101572
	85%	83%	87%	85%	85%

2.2 Compared Parameters

Parameter	Planned	Actual	Parameter	Planned	Actual
Instrument	ACIS	ACIS	Obspar format version number	7	7
Detector	ACIS-01236	ACIS-01236	Obspar file type	PREDICTED	ACTUAL
Grating	NONE	NONE	Obspar update status	NONE	UPDATED
Data mode	VFAINT	VFAINT	Number of optional ACIS chips dropped	0	0
Observation mode	POINTING	POINTING	On-chip summing requested	N	N
[deg] Pointing RA	44.624398	44.5981352889881	Subarray requested	NONE	NONE
[deg] Pointing Dec	-52.713149	-52.69083057982629	Alternating exposures requested	N	N
[deg] Pointing Roll	95.062522	95.25031293453631	[s] Primary exposure time	0.000000	3.1
[mm] SIM focus pos	-0.782348	-0.7809083437167272			
[mm] SIM defocus	0	0.001439871863259334			
[mm] SIM translation stage pos	-233.592463	-233.5874344608287			
[mm] SIM translation stage offset	0	-0.005018542100998502			
[s] Observation start time (MET)	271386314.184000	271385305.39803			
Observation start date	2006-08-08T01:04:09	2006-08-08T00:48:25			
[s] Observation end time (MET)	271401682.184000	271401915.52381			
Observation end date	2006-08-08T05:20:17	2006-08-08T05:25:15			
Read mode	TIMED	TIMED			

2.3 Aspect



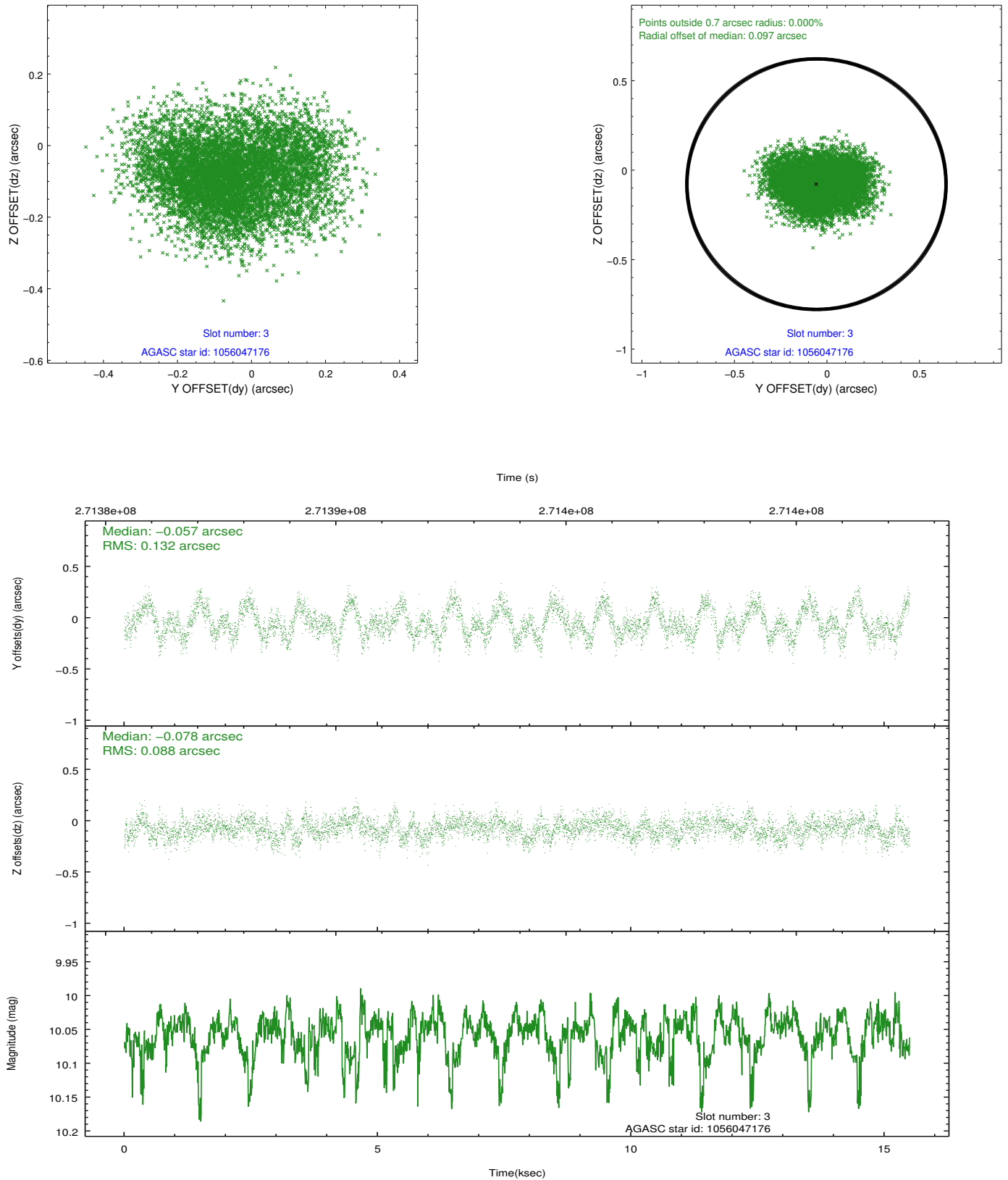


Slot Statistics

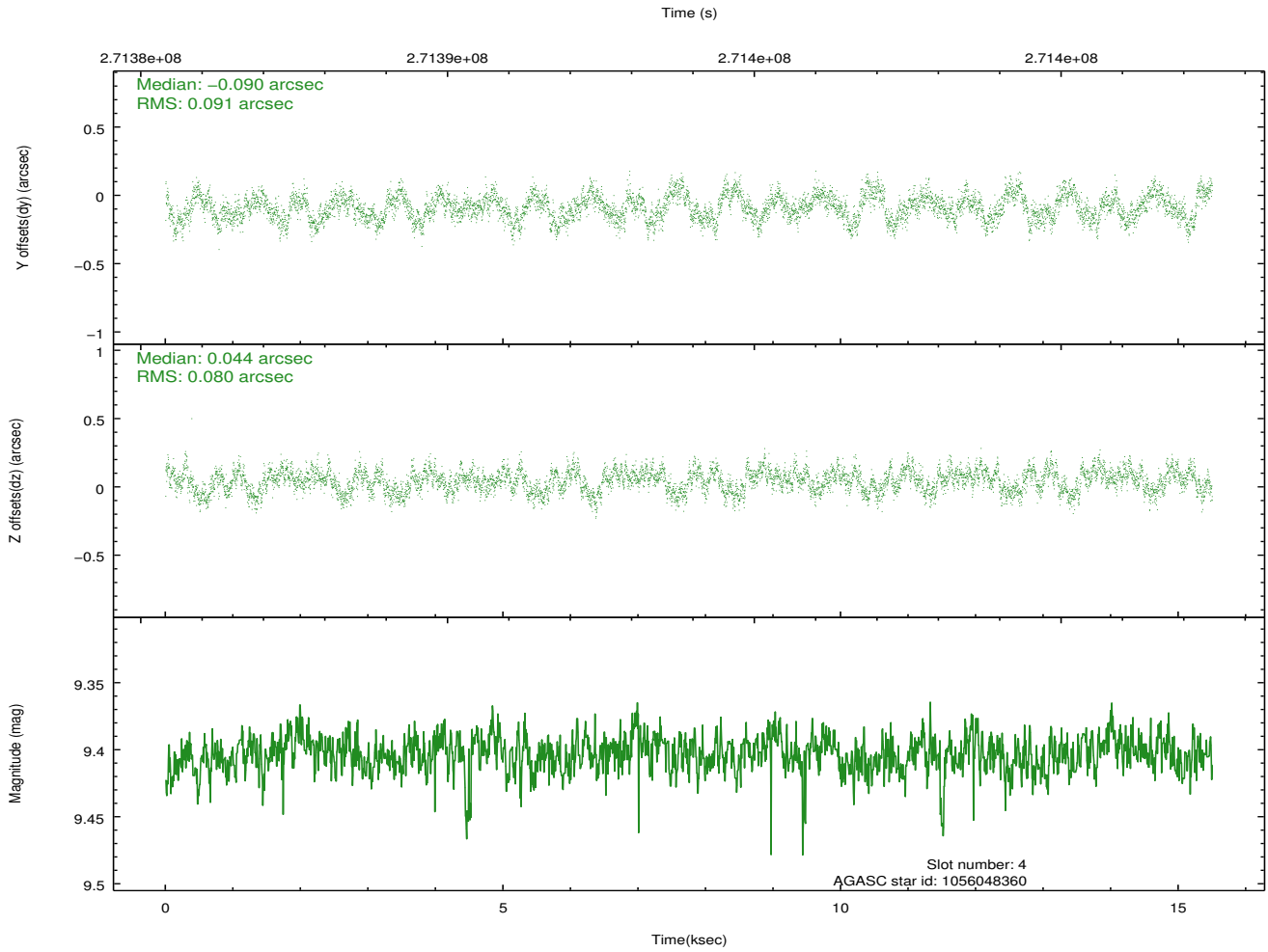
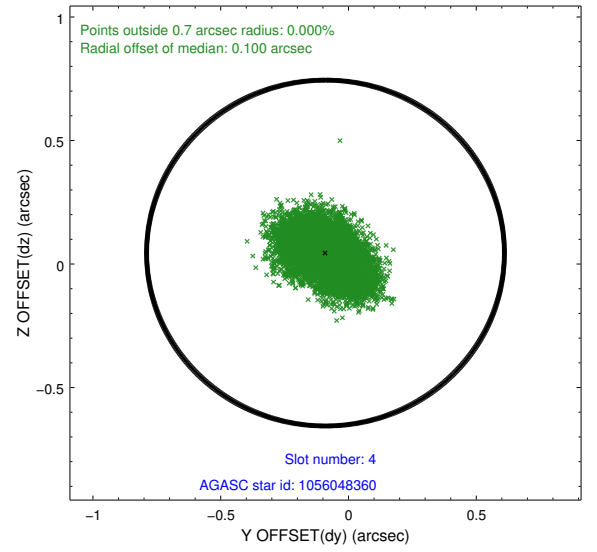
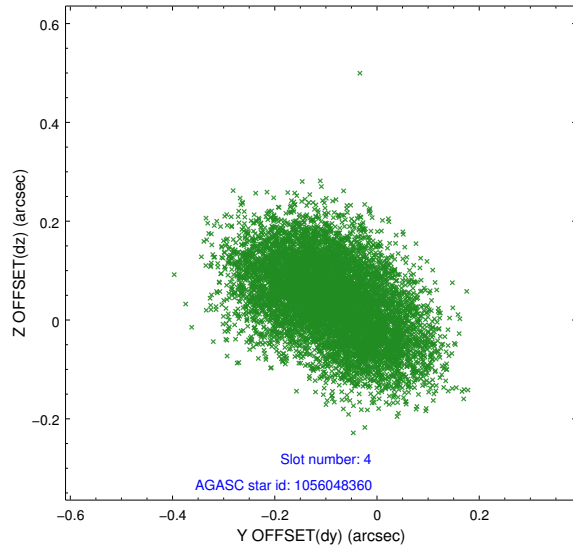
slot	status	id	mag	n_pts	med_dy	med_dz	dr1	dr2	ra	dec	mean_y	mean_z
0	FID	ACIS-I-2	7.14	3781	-0.072	-0.106	0.017	0.029	0.000000	0.000000	-761.53	-841.46
1	FID	ACIS-I-4	7.18	3780	0.132	0.074	0.014	0.033	0.000000	0.000000	2152.61	1064.73
2	FID	ACIS-I-5	7.22	3781	-0.160	0.101	0.013	0.038	0.000000	0.000000	-1815.07	1062.95
3	GUIDE	1056047176	10.06	7497	-0.057	-0.078	0.171	0.271	43.971167	-52.470618	989.81	1350.74
4	GUIDE	1056048360	9.40	7554	-0.090	0.044	0.131	0.207	44.978081	-52.117539	2065.32	-967.28
5	GUIDE	1112942768	9.60	7555	0.107	-0.148	0.130	0.200	44.384392	-53.133134	-1460.53	649.64
6	GUIDE	1112943360	9.79	7559	0.019	-0.098	0.133	0.216	44.160510	-53.160928	-1520.73	1139.03
7	GUIDE	1113063824	9.58	7511	0.017	0.276	0.153	0.280	45.621140	-52.916525	-935.07	-2088.77

2.4 Star Slots

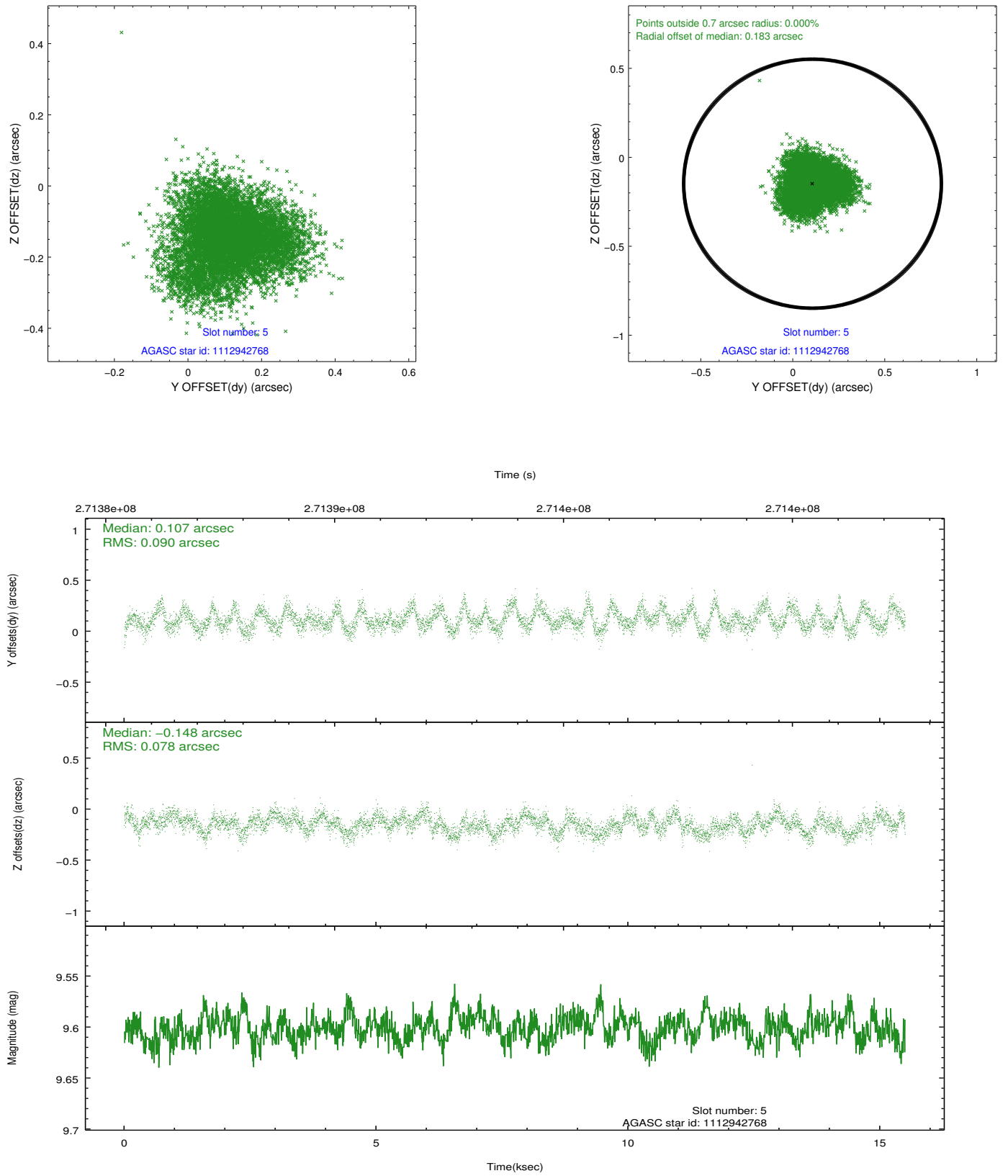
2.4.1 Slot 3



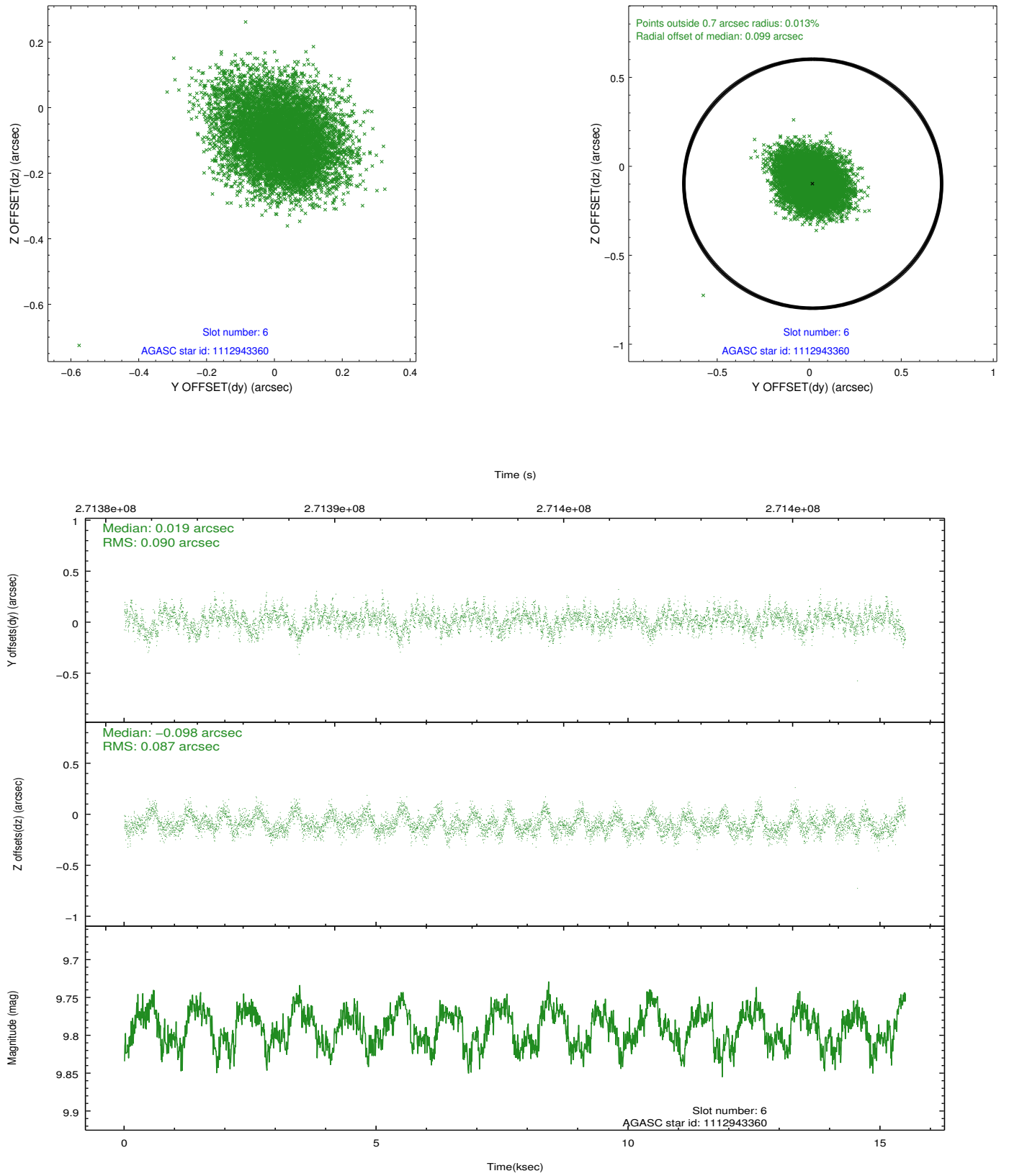
2.4.2 Slot 4



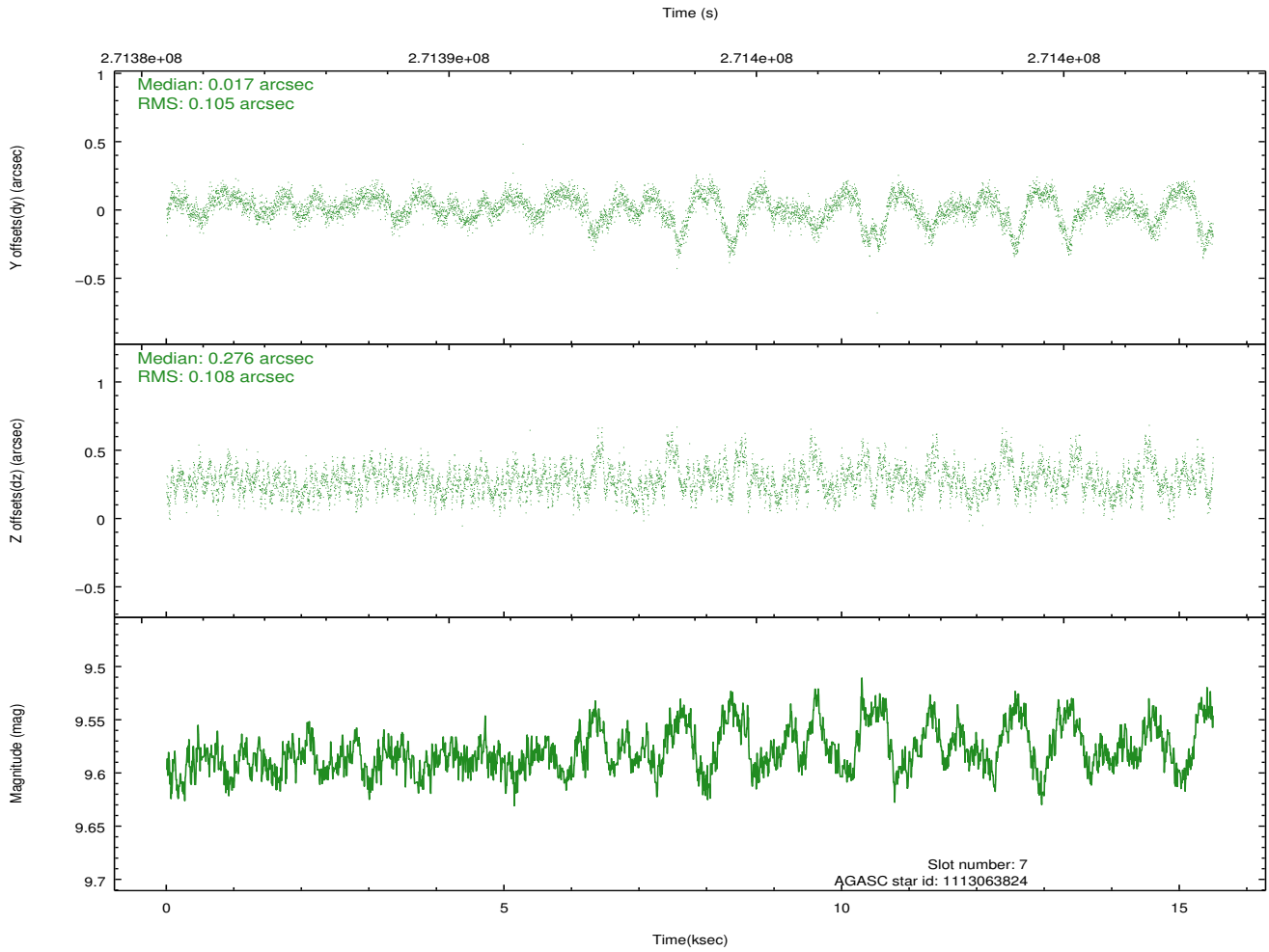
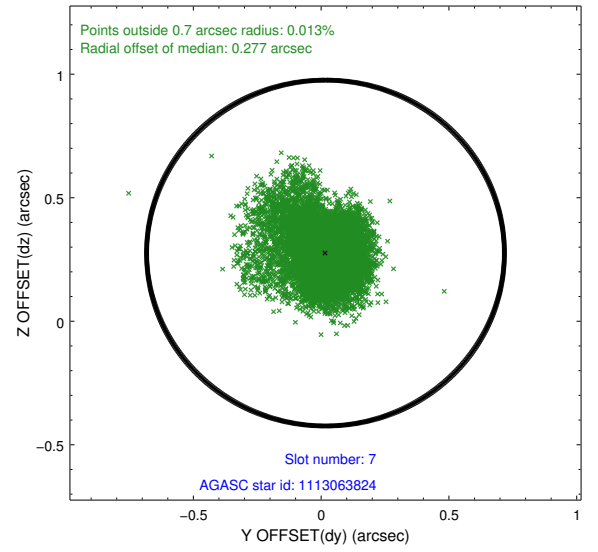
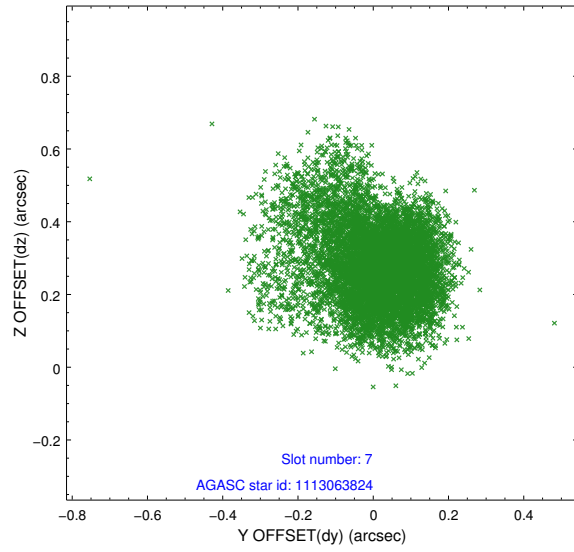
2.4.3 Slot 5



2.4.4 Slot 6

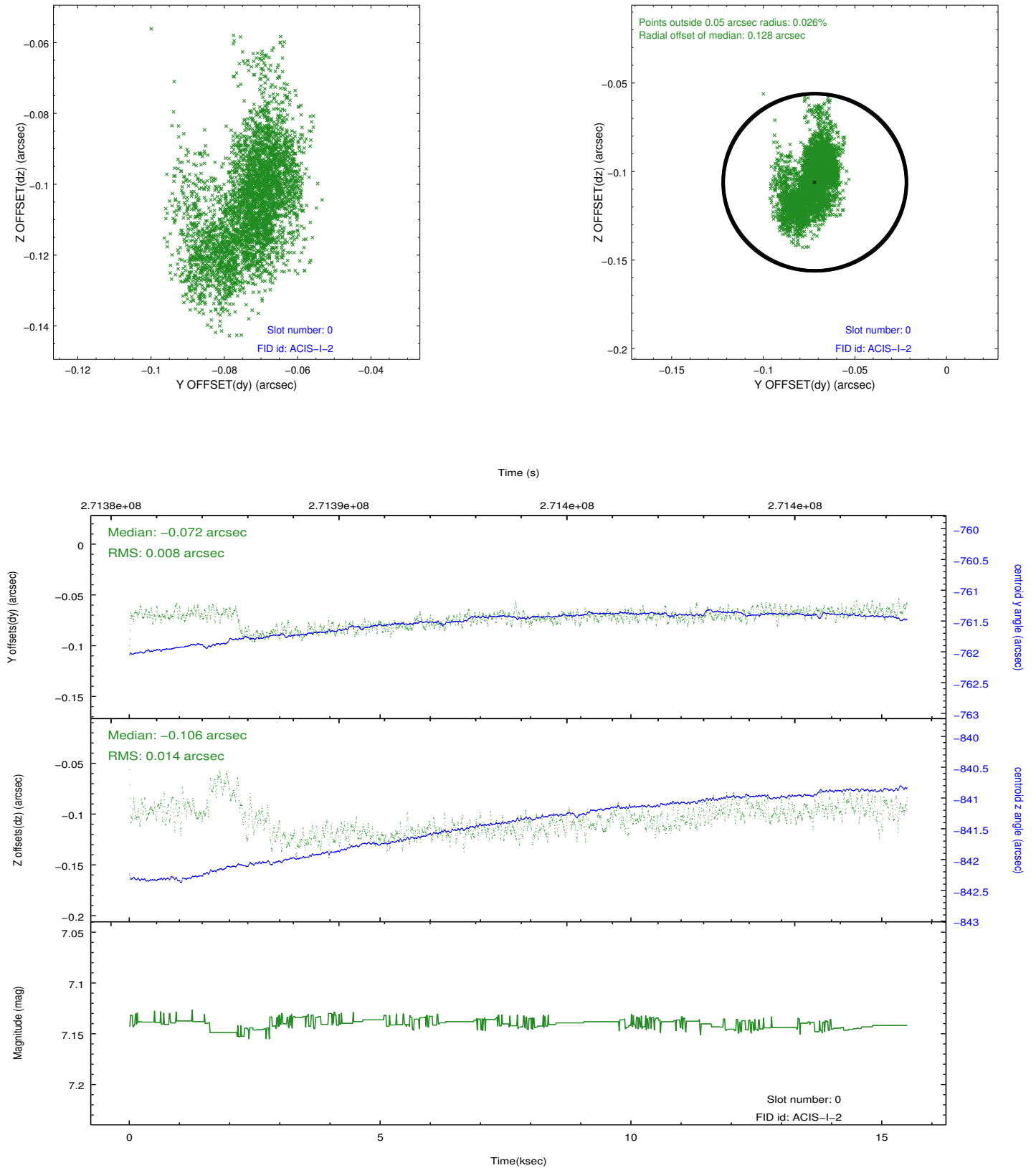


2.4.5 Slot 7

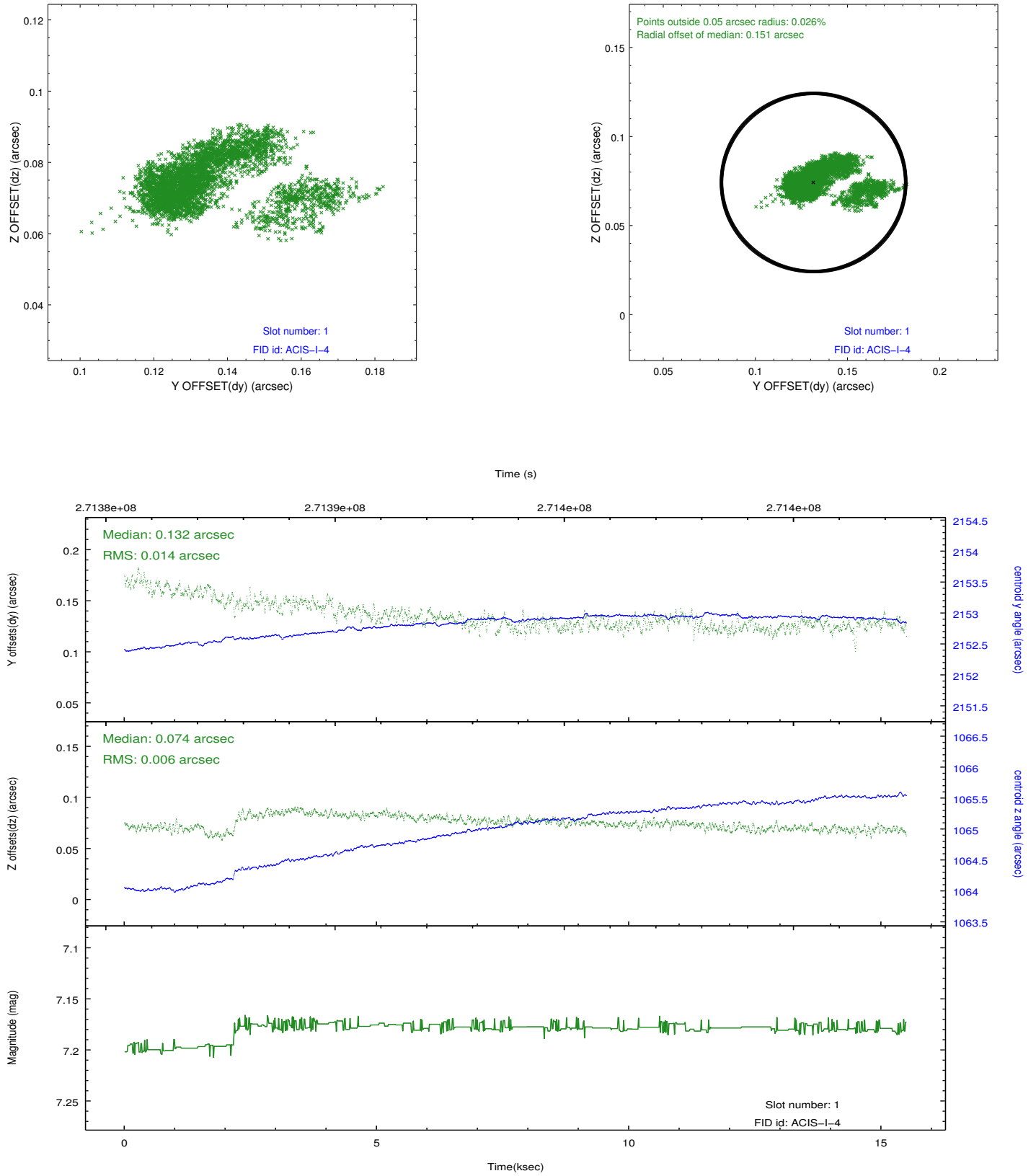


2.5 FID Slots

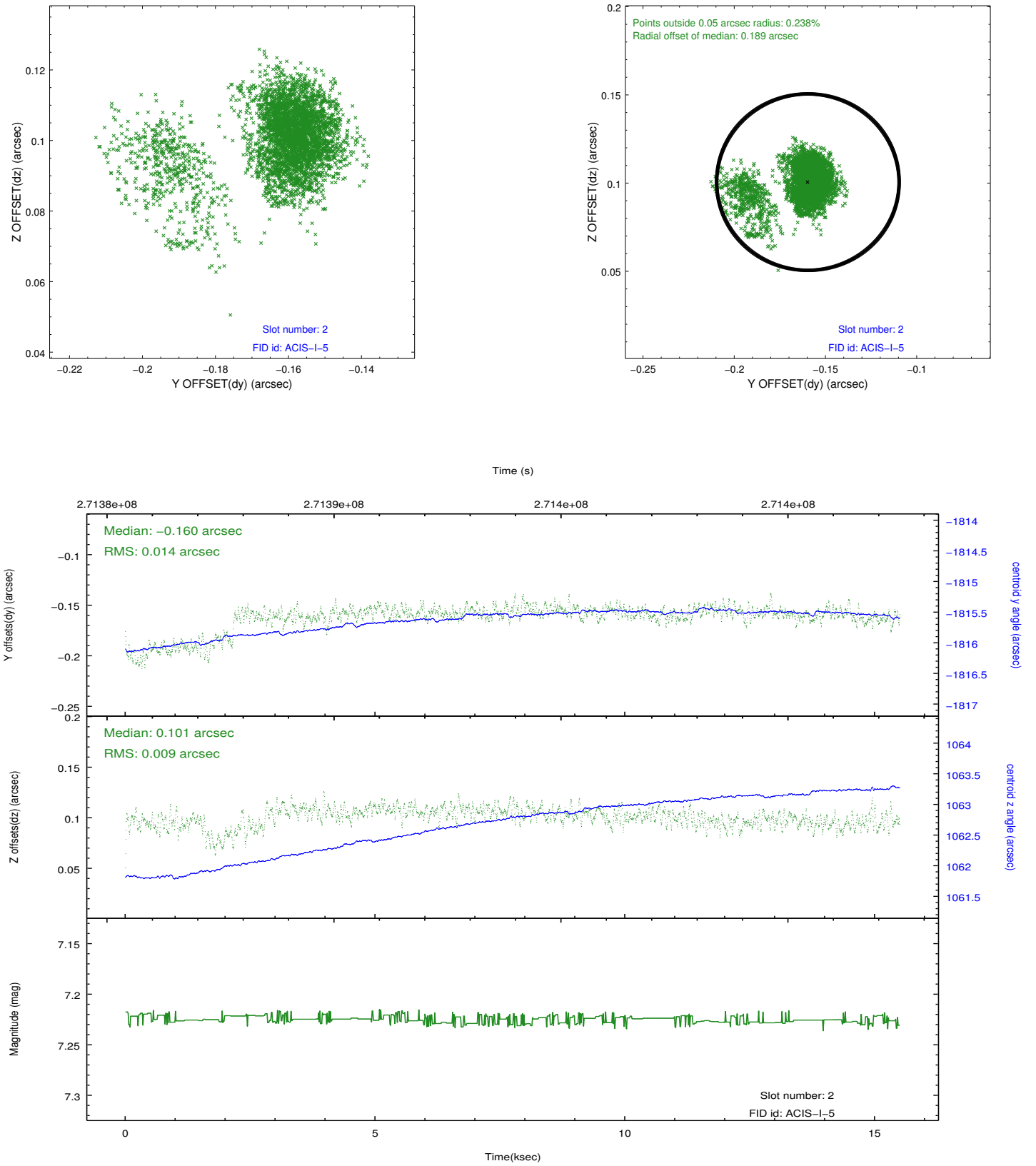
2.5.1 Slot 0



2.5.2 Slot 1



2.5.3 Slot 2



A Summary

A.1 Status

V&V Scientist	Jen Lauer
V&V Date (YYYY-MM-DD)	2012.04.08
V&V Edition	1
V&V Disposition and Status	OK
V&V Charge Time	15.4875591

A.2 Comments