

V&V Reference Report

L2 ASCDS Version : 8.4.3.1

Observation 6760 - L2 Version 2
Chandra X-Ray Center

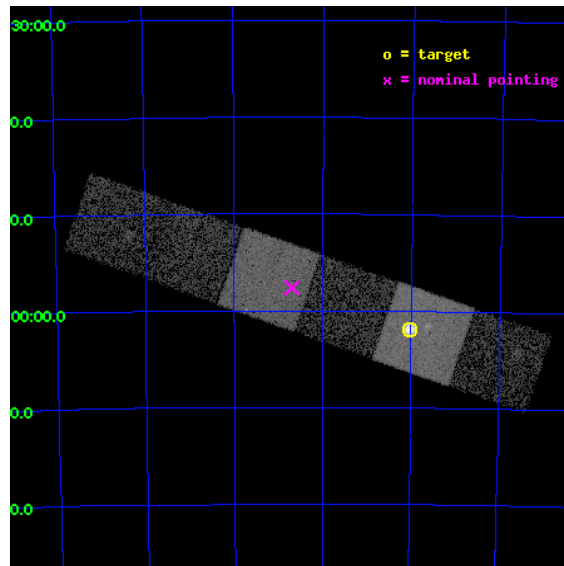
L2 Processing Date : Mar 28 2012

Contents

1	Front	2
2	OBI	3
2.1	OBI	3
2.1.1	Images	3
2.1.2	Bias	3
2.1.3	Parameters	4
2.1.4	Events	4
2.2	Compared Parameters	5
2.3	Aspect	6
2.4	Star Slots	9
2.4.1	Slot 3	9
2.4.2	Slot 4	10
2.4.3	Slot 5	11
2.4.4	Slot 6	12
2.4.5	Slot 7	13
2.5	FID Slots	14
2.5.1	Slot 0	14
2.5.2	Slot 1	15
2.5.3	Slot 2	16
A	Summary	17
A.1	Status	17
A.2	Comments	17

1 Front

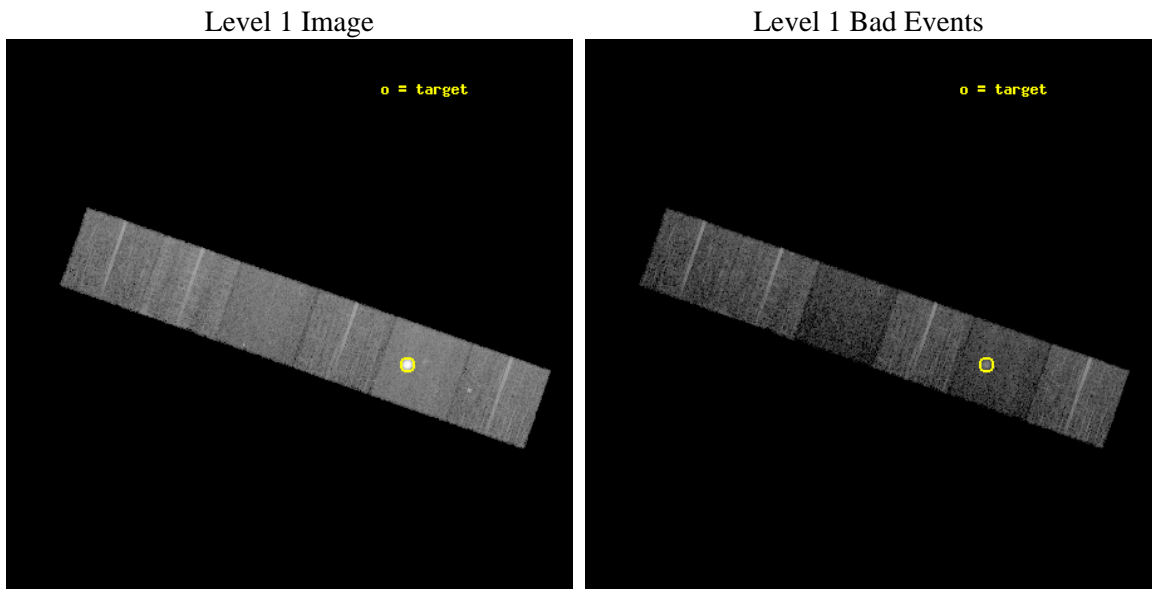
seq_num	590443	Sequence number
obs_id	6760	Observation id
title	AO7 ACIS-S Calibration Observations of E0102-72	Proposal title
observer	Dr. CXC Calibration	Principal investigator
object	E0102-72[S1,-120,13.29,0,0]	Source name
dtcycle	0	
cycle	P	events from which exps? Prim/Second/Both
ra_targ	16.01	Observer's specified target RA [deg]
dec_targ	-72.032028	Observer's specified target Dec [deg]
ra_nom	16.674585823046	Nominal RA [deg]
dec_nom	-71.96065635238	Nominal Dec [deg]
roll_nom	199.20962381498	Nominal Roll [deg]
revision	2	Processing version of data
ontime	7753.3887698352	Sum of GTIs [s]
livetime	7655.2106927014	Livetime [s]
ontime4	7753.4708498418	Sum of GTIs [s]
ontime5	7753.3887698352	Sum of GTIs [s]
ontime6	7753.3477298319	Sum of GTIs [s]
ontime7	7753.4298098385	Sum of GTIs [s]
ontime8	7750.0657294989	Sum of GTIs [s]
ontime9	7753.2656498551	Sum of GTIs [s]
l2events	114153	Number of level 2 events



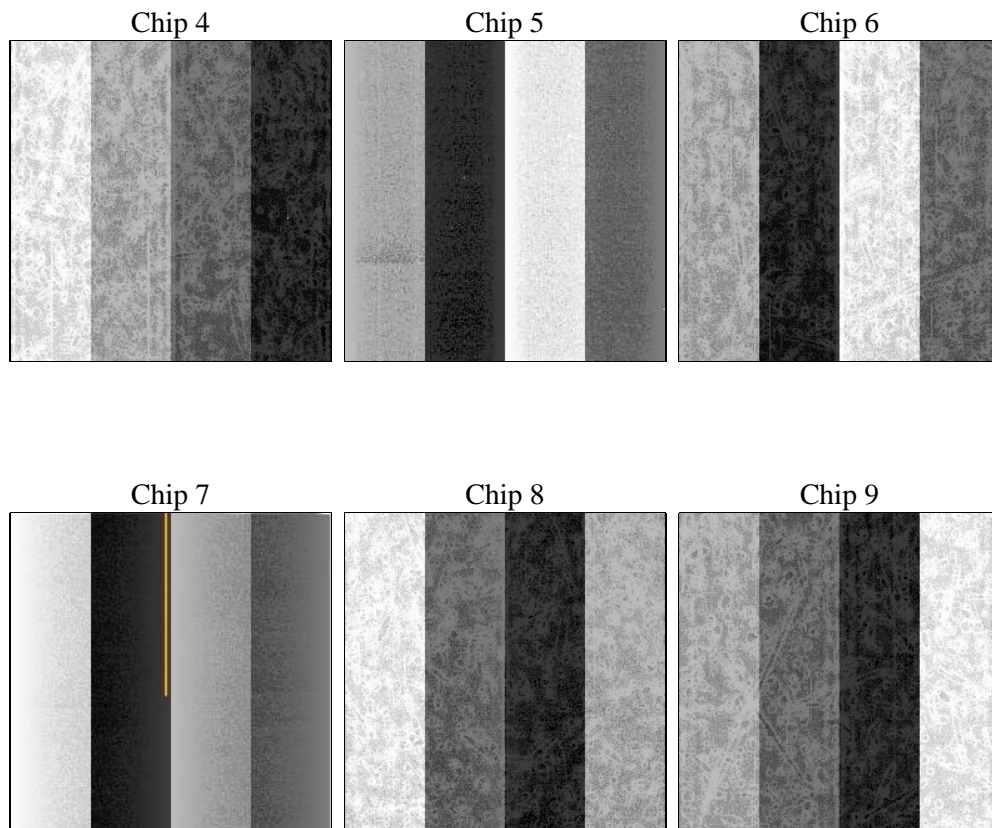
2 OBI

2.1 OBI

2.1.1 Images



2.1.2 Bias



2.1.3 Parameters

obi_num	0	Obi number	sched_exp_time	8000.000000	[s] Scheduled observation exposure time
ascdsver	8.4.3	Processing system revision	ontime	7753.3887698352	Sum of GTIs [s]
caldsver	4.4.8	 	ontime4	7753.4708498418	Sum of GTIs [s]
date	2012-03-28T05:43:11	Date and time of file creation	ontime5	7753.3887698352	Sum of GTIs [s]
revision	2	Processing version of data	ontime6	7753.3477298319	Sum of GTIs [s]
			ontime7	7753.4298098385	Sum of GTIs [s]
			ontime8	7750.0657294989	Sum of GTIs [s]
			ontime9	7753.2656498551	Sum of GTIs [s]
			l1events	386903	Number of level 1 events

2.1.4 Events

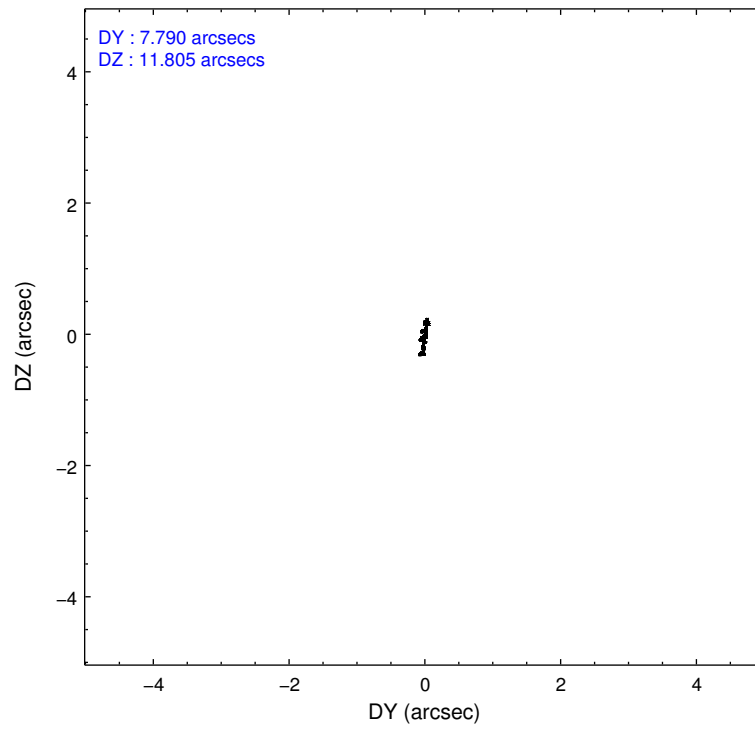
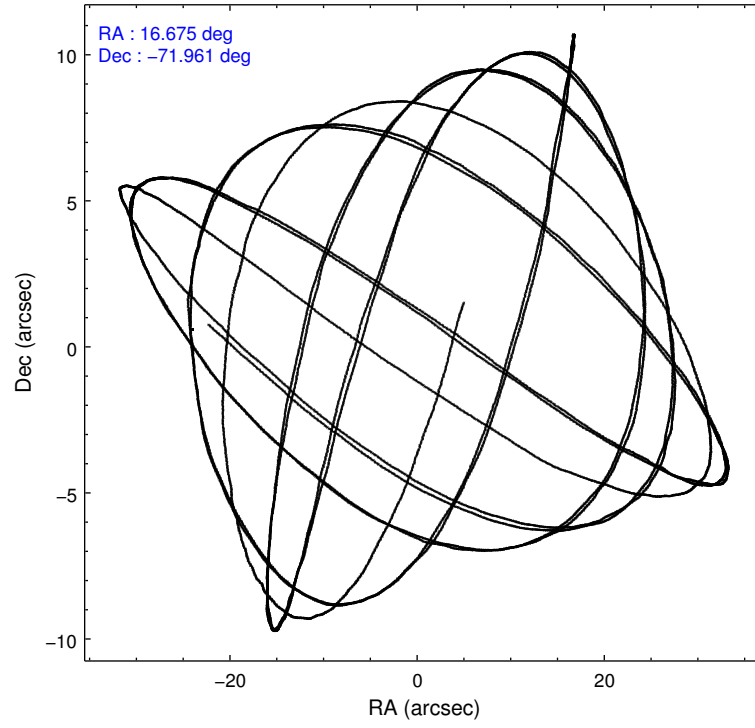
	ccd 4	ccd 5	ccd 6	ccd 7	ccd 8	ccd 9		ccd 4	ccd 5	ccd 6	ccd 7	ccd 8	ccd 9
level 1 events	60991	106047	55146	49904	66959	47856	grade 0 events	2709	22200	2194	2395	4390	1826
rejected events	54812	31582	49541	25277	51172	42705		4%	20%	3%	4%	6%	3%
rejected %	89%	29%	89%	50%	76%	89%	grade 1 events	52	208	32	53	64	42
								0%	0%	0%	0%	0%	0%
							grade 2 events	1421	21587	1173	5148	3665	1121
								2%	20%	2%	10%	5%	2%
							grade 3 events	598	5197	598	2369	1709	588
								0%	4%	1%	4%	2%	1%
							grade 4 events	581	5167	564	2385	1648	589
								0%	4%	1%	4%	2%	1%
							grade 5 events	1797	5764	1757	5311	2657	1931
								2%	5%	3%	10%	3%	4%
							grade 6 events	873	20369	1077	12360	4377	1029
								1%	19%	1%	24%	6%	2%
							grade 7 events	52960	25555	47751	19883	48449	40730
								86%	24%	86%	39%	72%	85%

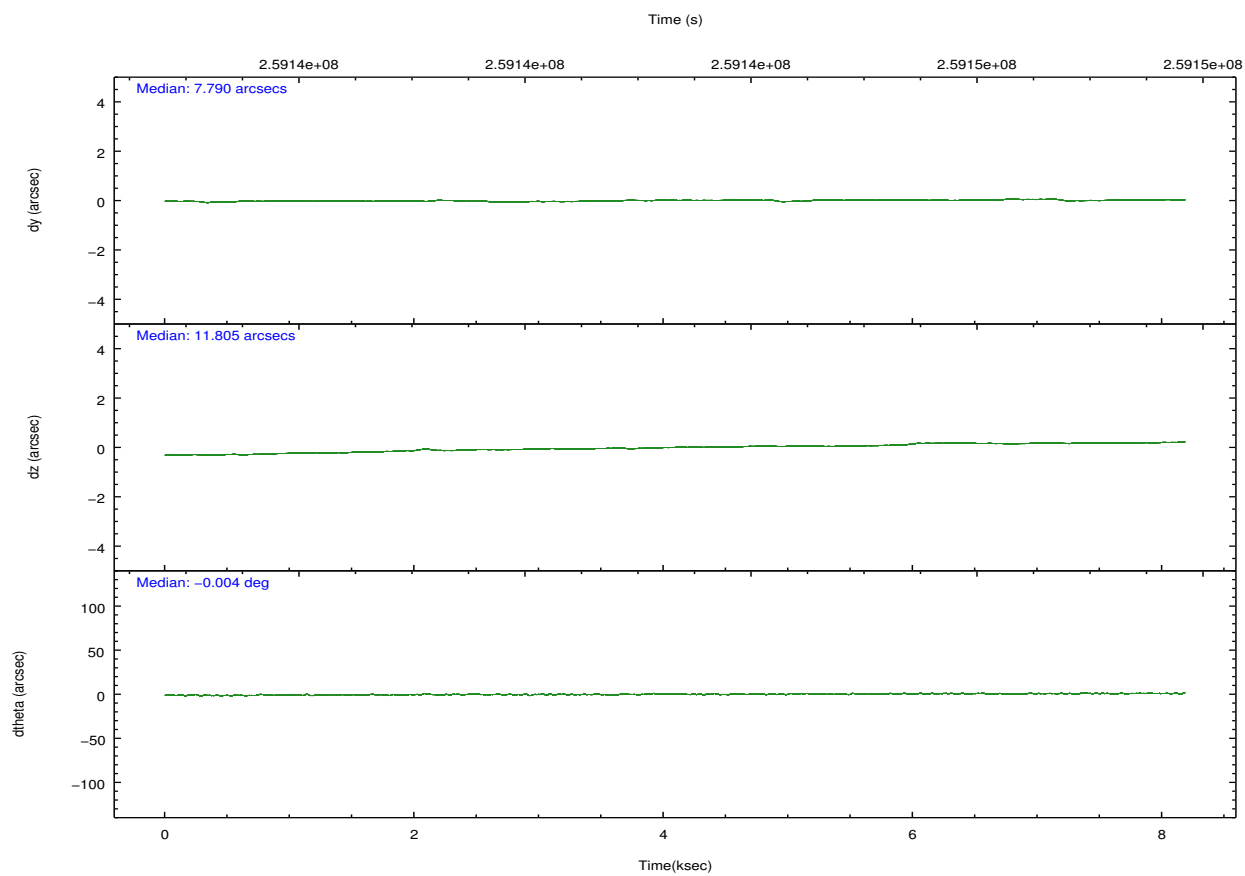
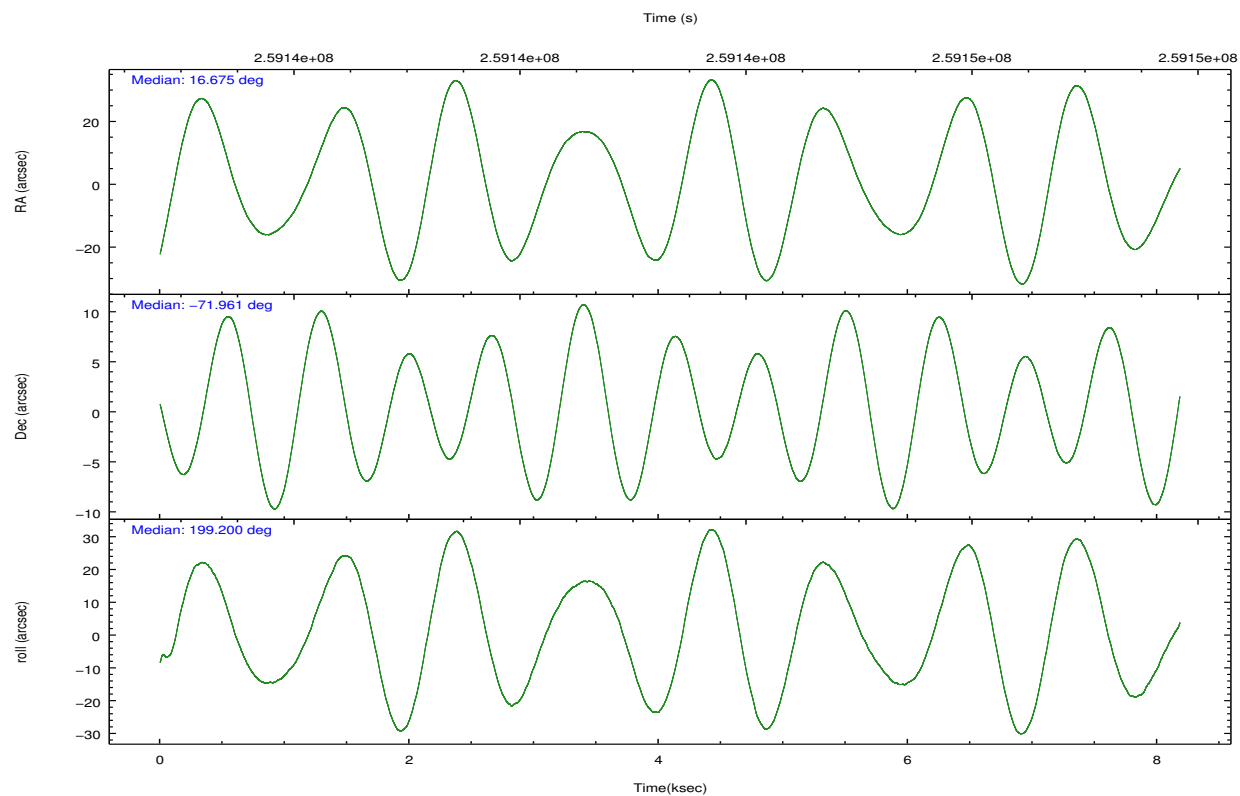
2.2 Compared Parameters

Parameter	Planned	Actual
Instrument	ACIS	ACIS
Detector	ACIS-456789	ACIS-456789
Grating	NONE	NONE
Data mode	VFAINT	VFAINT
Observation mode	POINTING	POINTING
[deg] Pointing RA	16.731075	16.67458582304565
[deg] Pointing Dec	-71.939710	-71.96065635237989
[deg] Pointing Roll	199.106713	199.2096238149847
[s] Window start time (MET)	247190464.184000	247190464.184000
[s] Window stop time (MET)	260150465.184000	260150465.184000
[mm] SIM focus pos	-0.684267	-0.6828225247311905
[mm] SIM defocus	0	0.001444936568705701
[mm] SIM translation stage pos	-190.132523	-190.1400660498719
[mm] SIM translation stage offset	0	0.00754346686406393
[s] Observation start time (MET)	259139418.184000	259139042.50095
Observation start date	2006-03-19T07:09:13	2006-03-19T07:04:02
[s] Observation end time (MET)	259147418.184000	259147553.07635
Observation end date	2006-03-19T09:22:33	2006-03-19T09:25:53
Read mode	TIMED	TIMED

Parameter	Planned	Actual
Obspar format version number	7	7
Obspar file type	PREDICTED	ACTUAL
Obspar update status	NONE	UPDATED
Number of optional ACIS chips dropped	0	0
On-chip summing requested	N	N
Subarray requested	NONE	NONE
Alternating exposures requested	N	N
[s] Primary exposure time	0.000000	3.2

2.3 Aspect



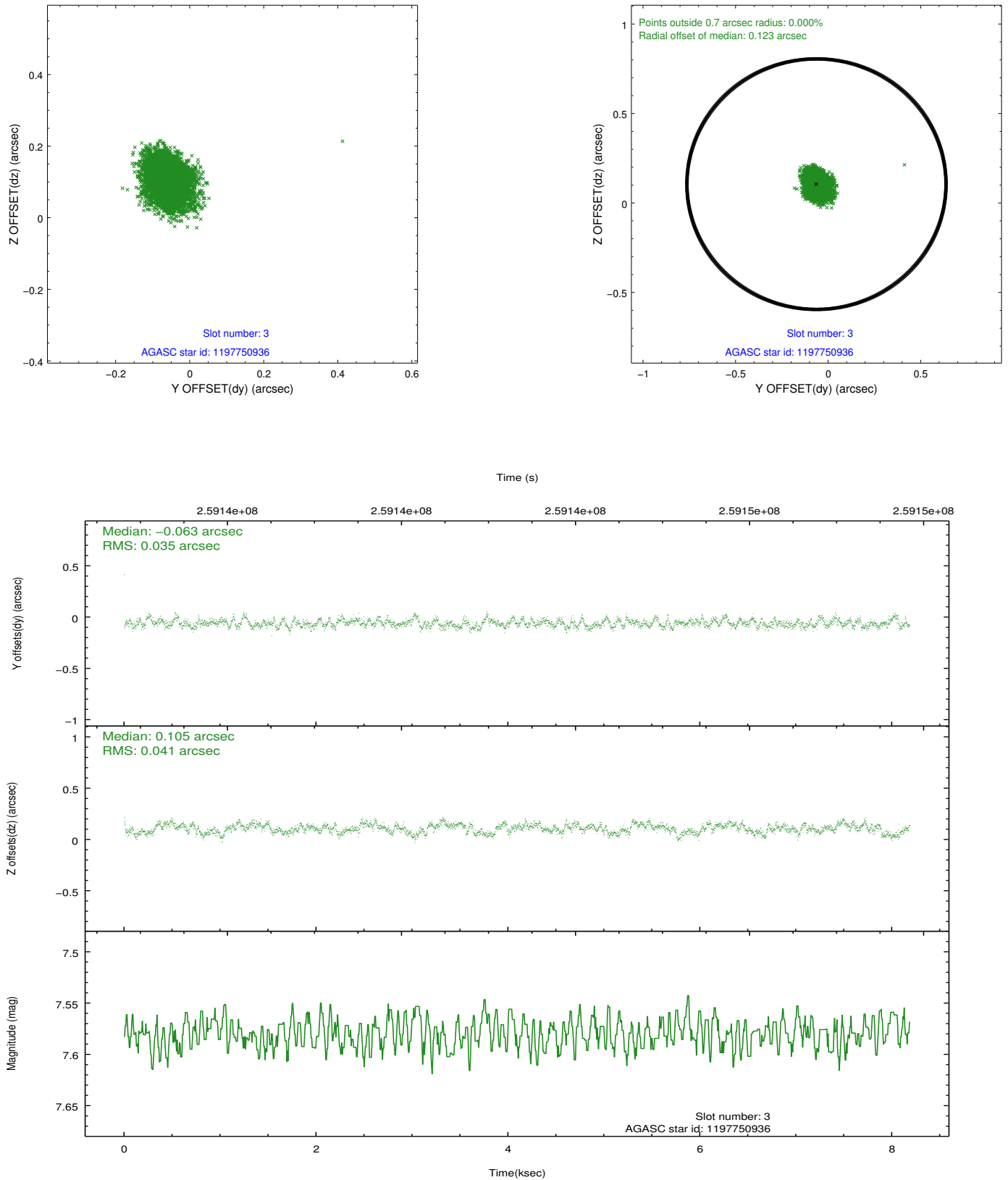


Slot Statistics

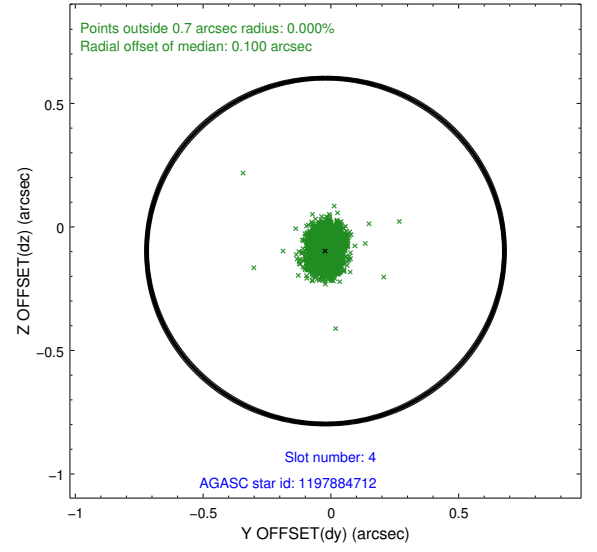
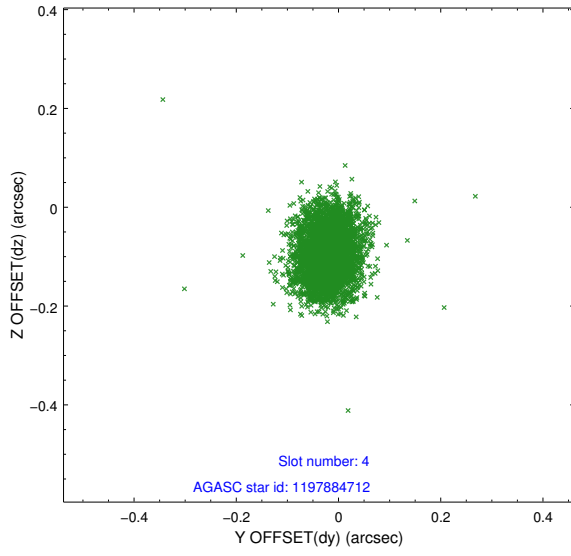
slot	status	id	mag	n_pts	med_dy	med_dz	dr1	dr2	ra	dec	mean_y	mean_z
0	FID	ACIS-S-2	7.10	1996	-0.022	-0.021	0.008	0.013	0.000000	0.000000	-760.57	-1733.10
1	FID	ACIS-S-4	7.20	1996	0.095	0.016	0.007	0.011	0.000000	0.000000	2152.50	174.72
2	FID	ACIS-S-5	7.23	1997	-0.105	0.014	0.008	0.013	0.000000	0.000000	-1812.63	169.15
3	GUIDE	1197750936	7.58	3993	-0.063	0.105	0.058	0.092	15.387940	-71.549550	992.25	-1811.60
4	GUIDE	1197884712	8.30	3992	-0.021	-0.098	0.063	0.101	16.087398	-72.252690	1037.82	836.54
5	GUIDE	1197885104	9.36	3991	0.124	-0.005	0.090	0.154	17.845067	-72.189368	-860.31	1261.69
6	GUIDE	1197885328	7.24	3993	0.069	0.015	0.056	0.089	16.283090	-71.733943	235.34	-863.50
7	GUIDE	1198189696	7.36	3992	-0.115	-0.022	0.053	0.086	15.223750	-72.697522	2424.36	2068.90

2.4 Star Slots

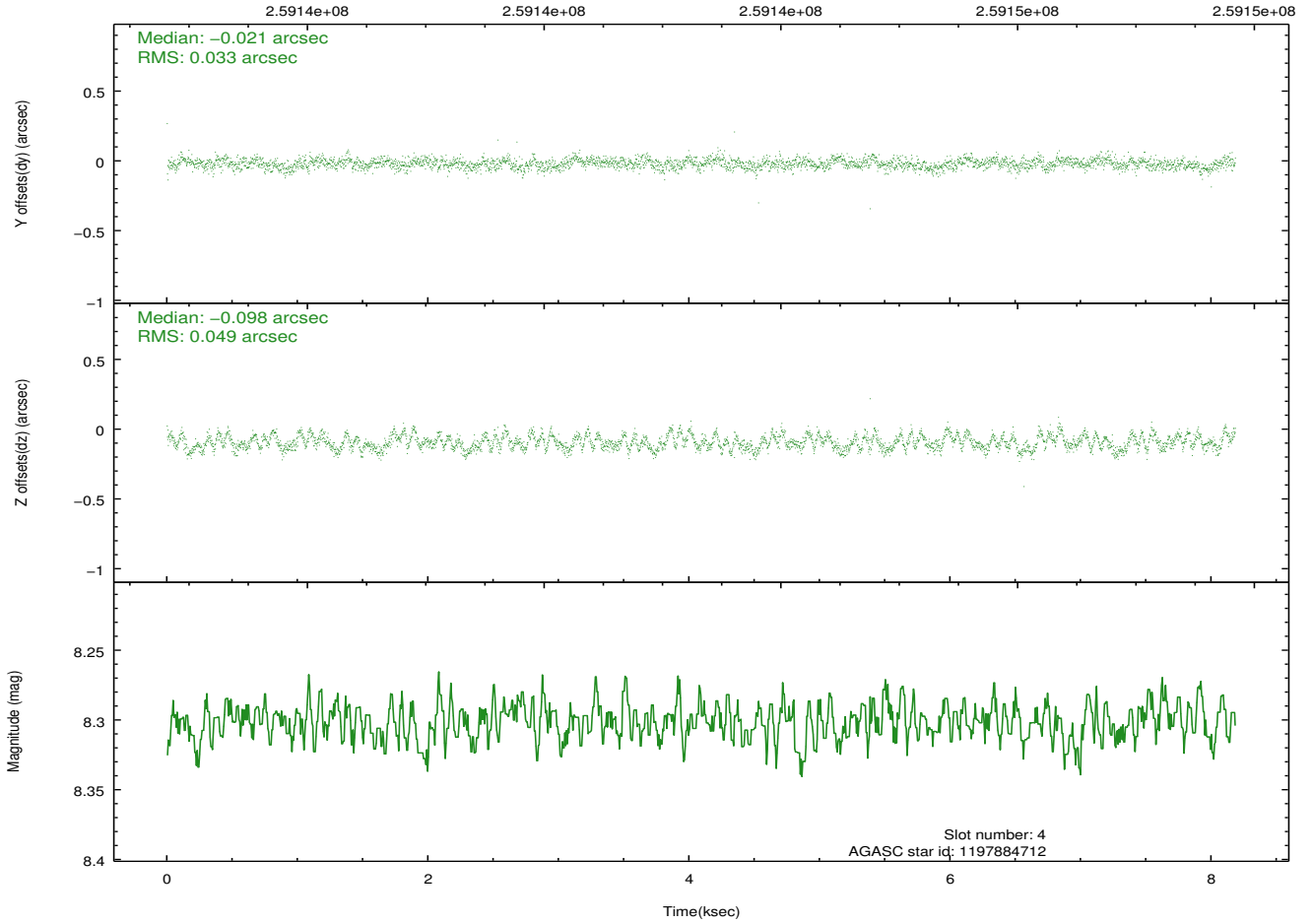
2.4.1 Slot 3



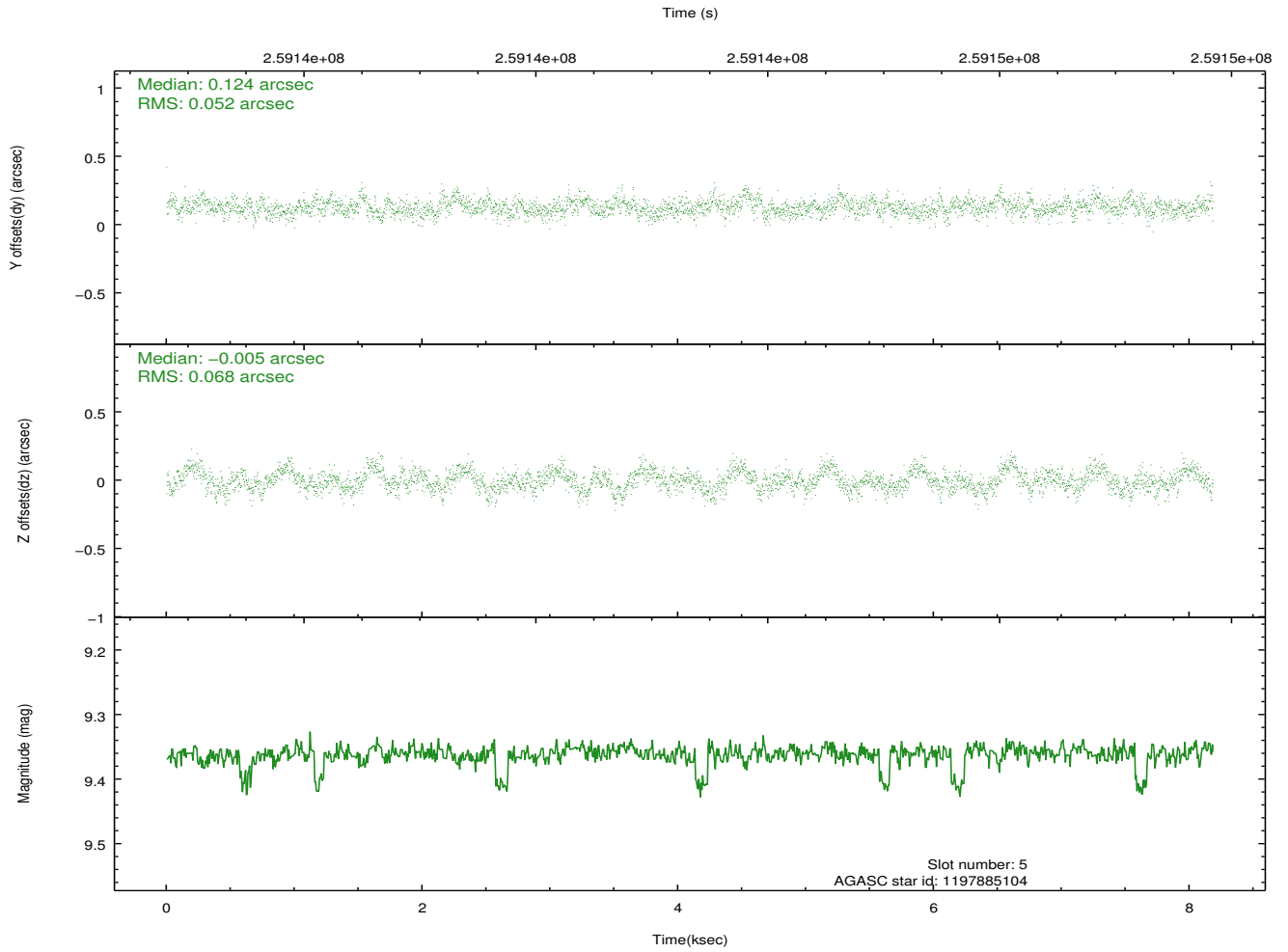
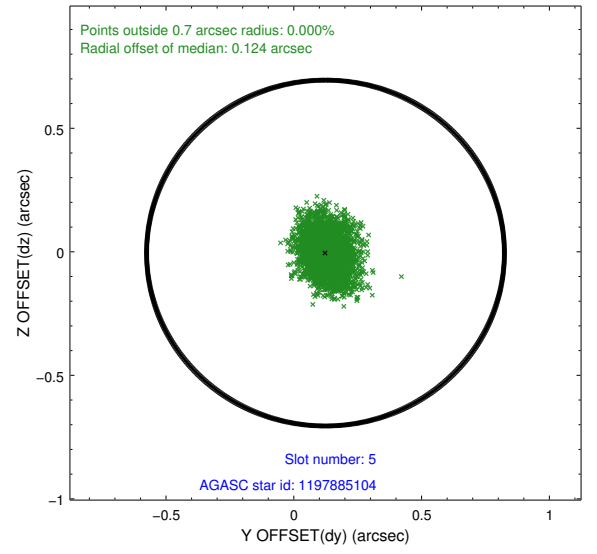
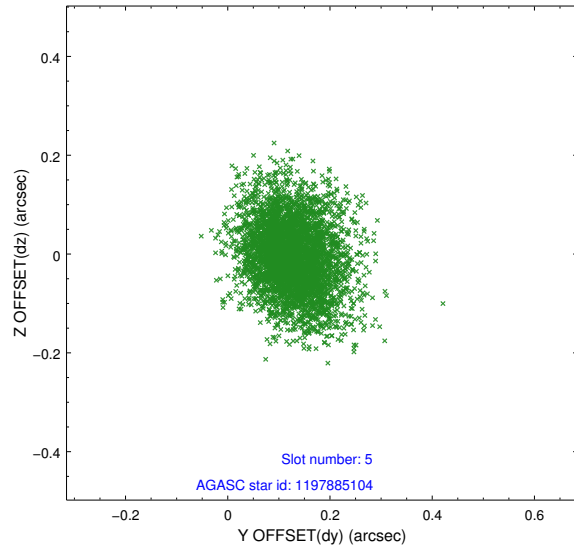
2.4.2 Slot 4



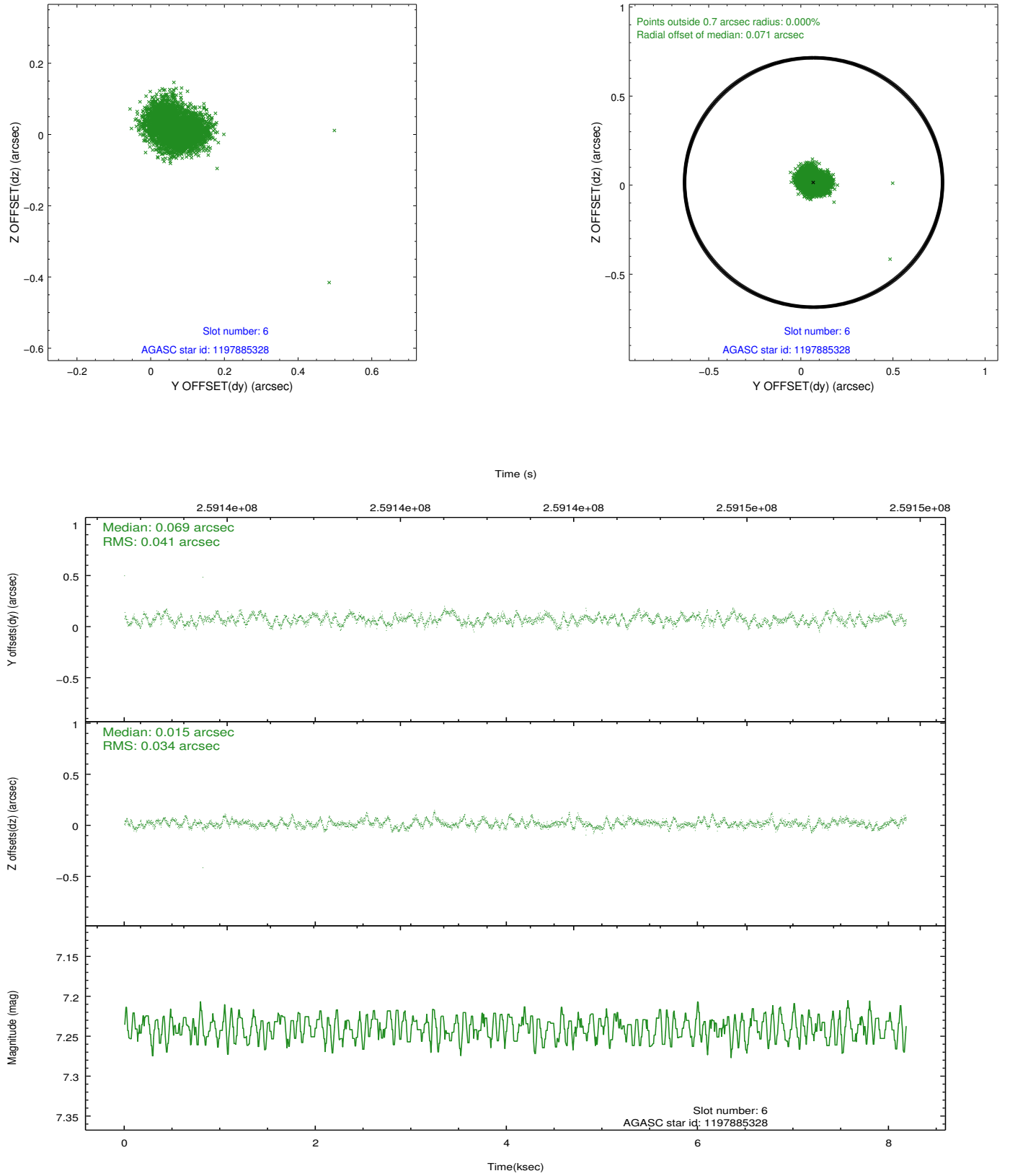
Time (s)



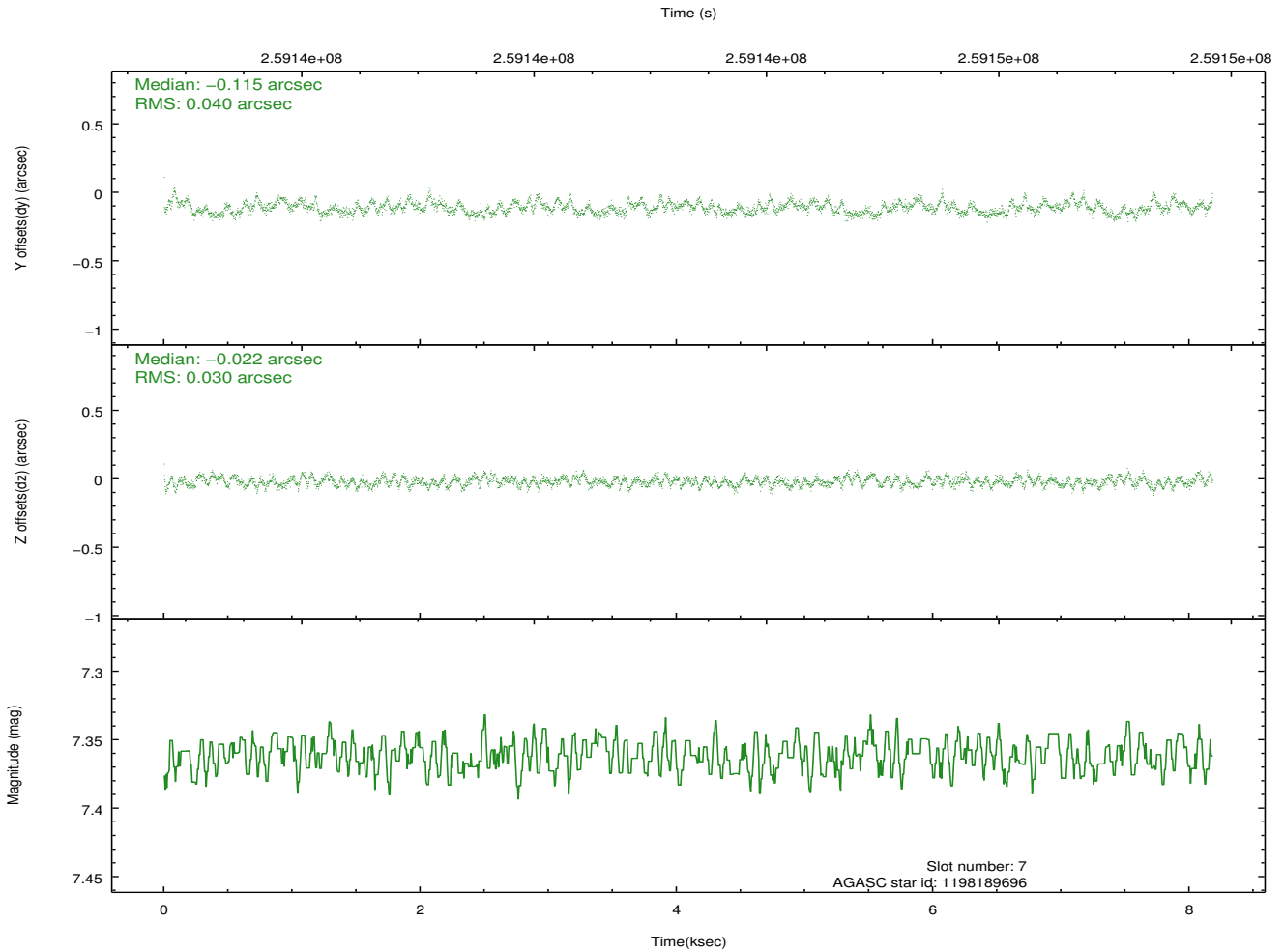
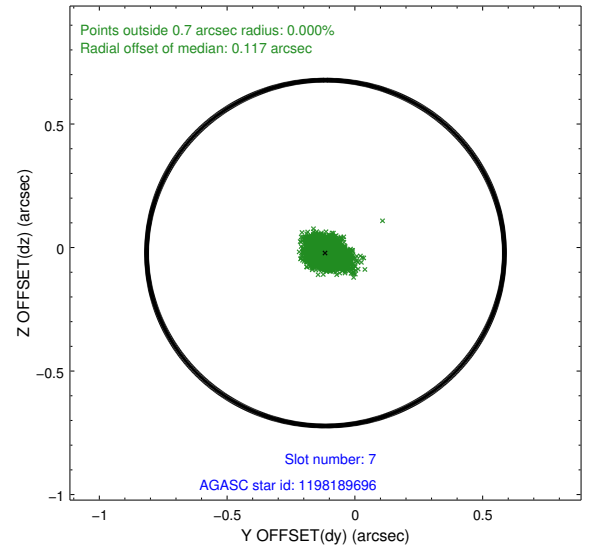
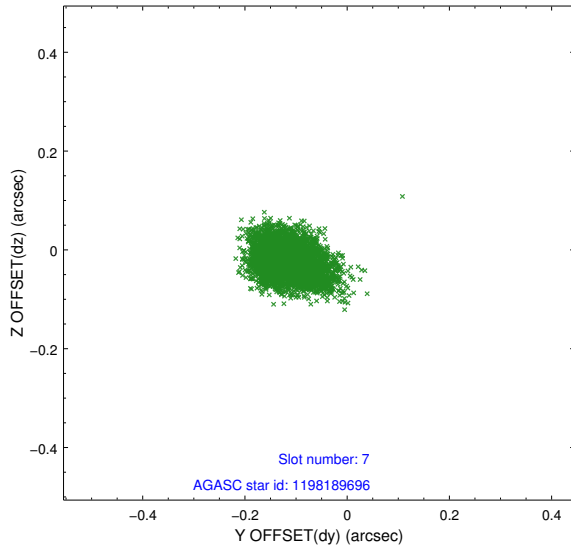
2.4.3 Slot 5



2.4.4 Slot 6

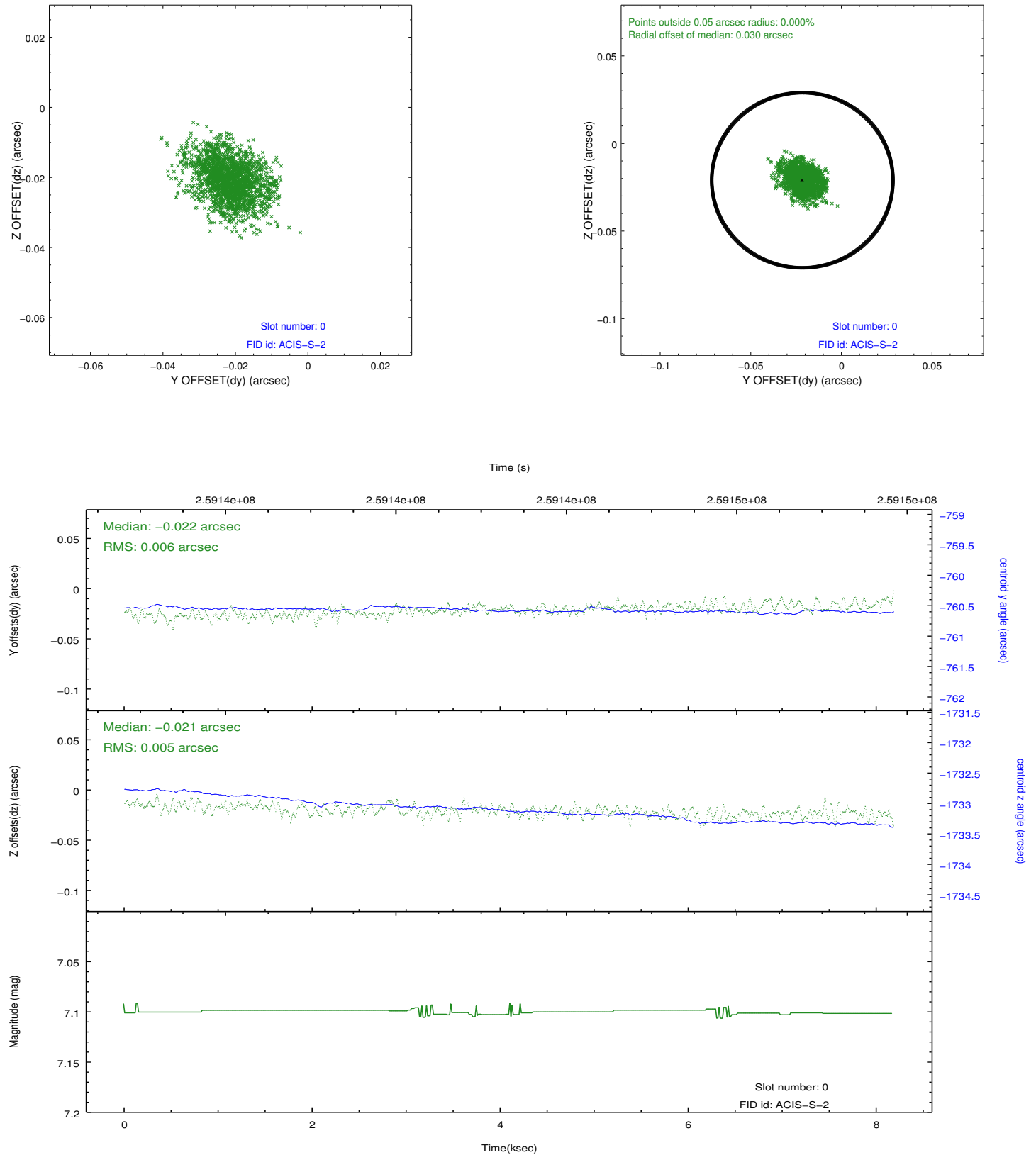


2.4.5 Slot 7

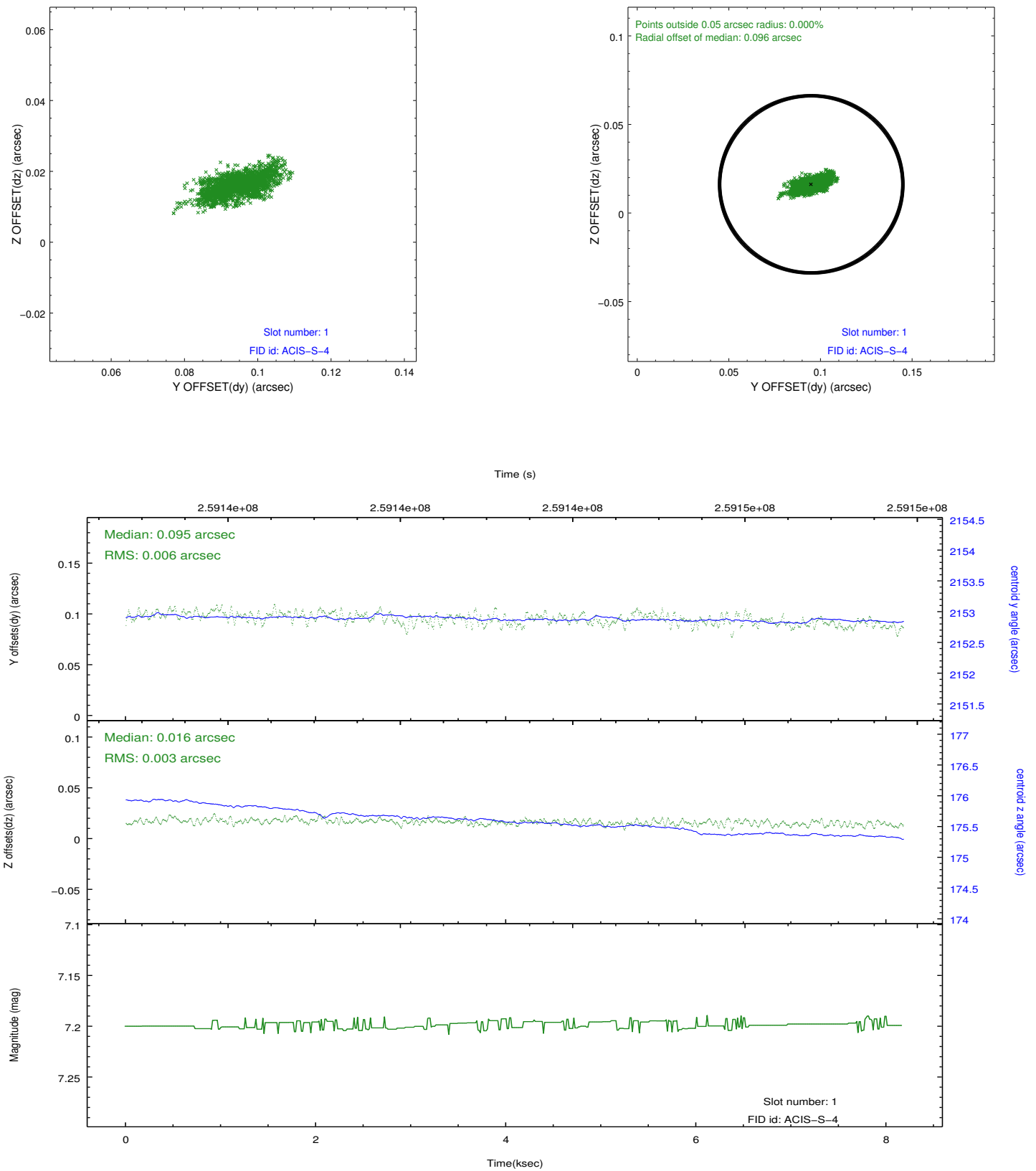


2.5 FID Slots

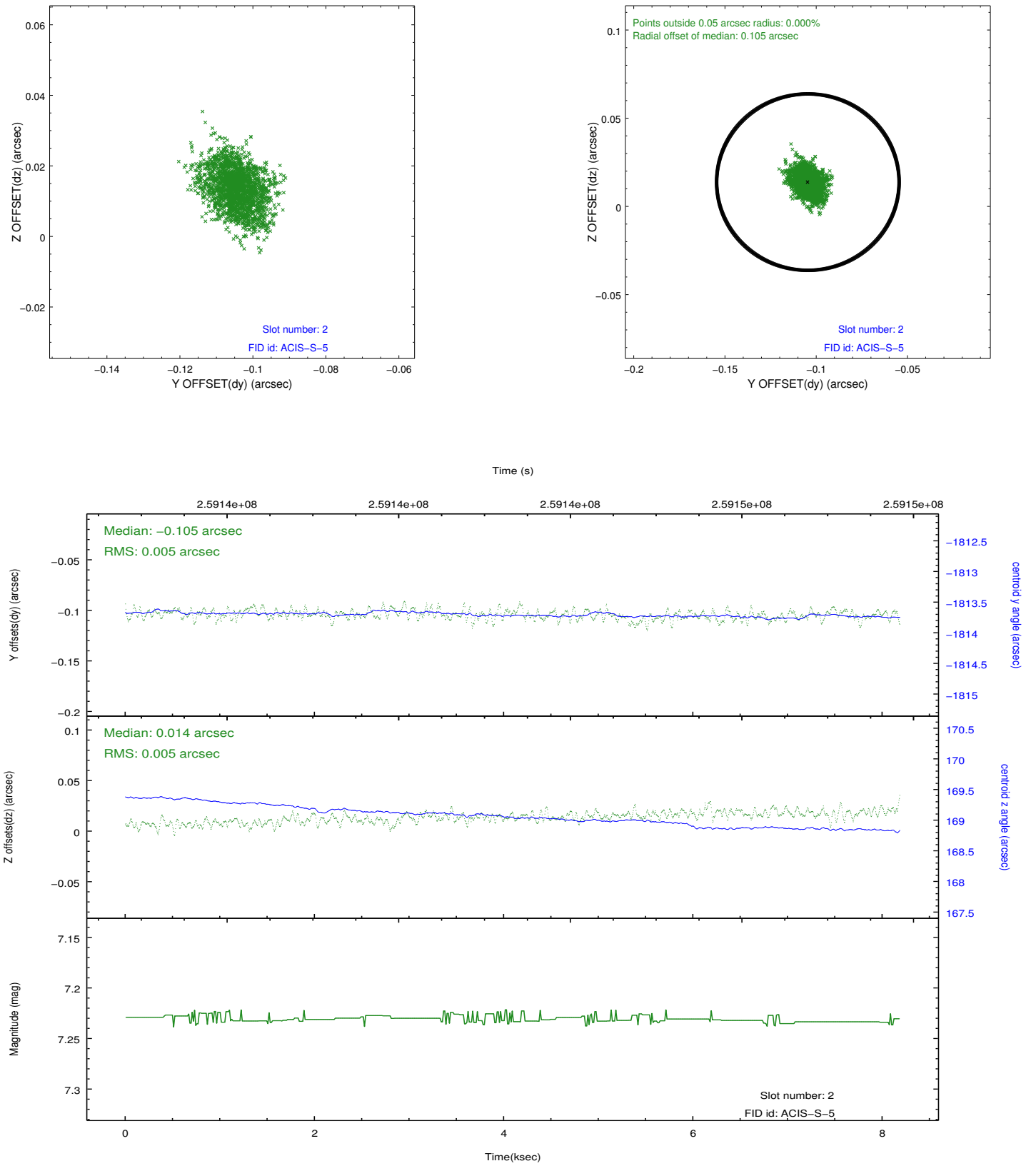
2.5.1 Slot 0



2.5.2 Slot 1



2.5.3 Slot 2



A Summary

A.1 Status

V&V Scientist	Jen Lauer
V&V Date (YYYY-MM-DD)	2012.03.29
V&V Edition	1
V&V Disposition and Status	OK
V&V Charge Time	7.75359997

A.2 Comments

Window constraint met.