

V&V Reference Report

L2 ASCDS Version : 8.4.3.1

Observation 6660 - L2 Version 2
Chandra X-Ray Center

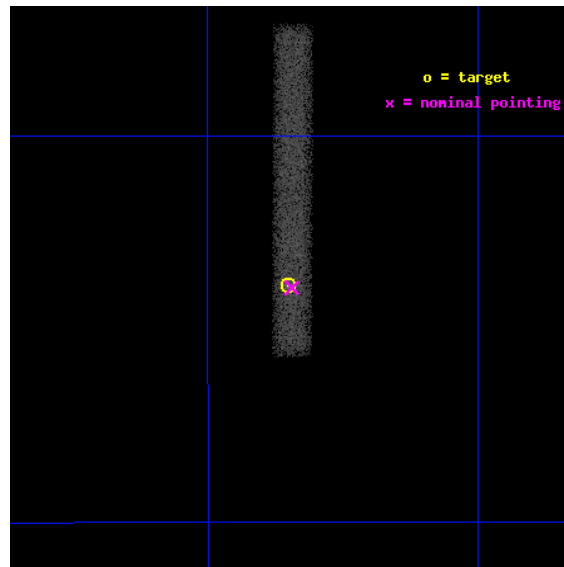
L2 Processing Date : Apr 9 2012

Contents

1	Front	2
2	OBI	3
2.1	OBI	3
2.1.1	Images	3
2.1.2	Bias	3
2.1.3	Parameters	4
2.1.4	Events	4
2.2	Compared Parameters	5
2.3	Aspect	6
2.4	Star Slots	9
2.4.1	Slot 3	9
2.4.2	Slot 4	10
2.4.3	Slot 5	11
2.4.4	Slot 6	12
2.4.5	Slot 7	13
2.5	FID Slots	14
2.5.1	Slot 0	14
2.5.2	Slot 1	15
2.5.3	Slot 2	16
A	Summary	17
A.1	Status	17
A.2	Comments	17

1 Front

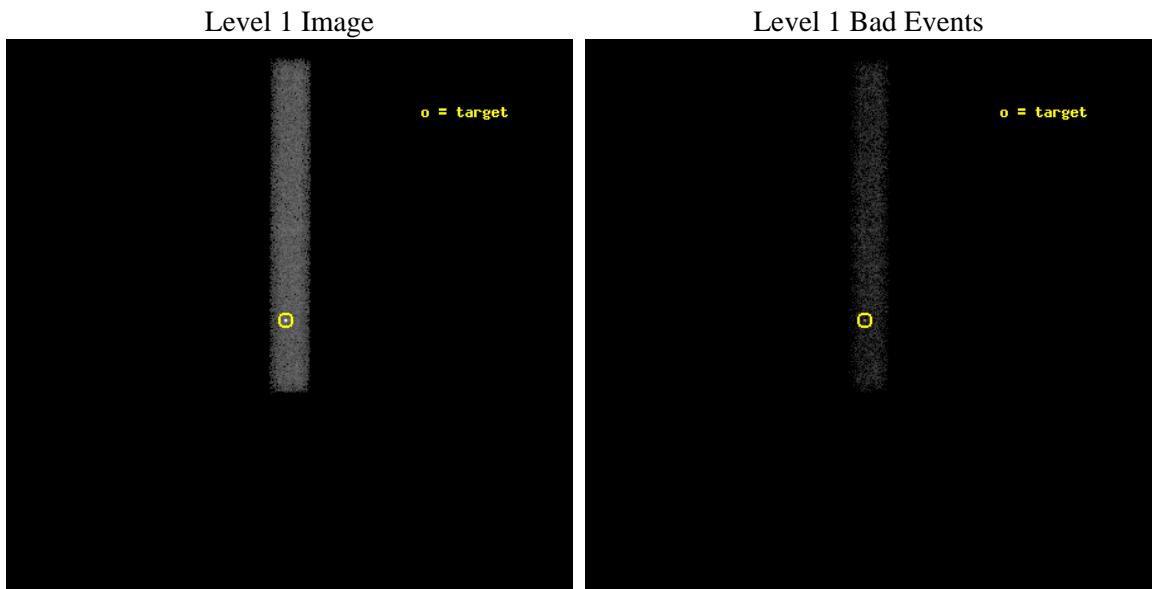
seq_num	500614	Sequence number
obs_id	6660	Observation id
title	And Back to Quiescence: The Transient AXP XTE J1810-197	Proposal t
observer	Prof. Jules Halpern	Principal investigator
object	XTE J1810-197	Source name
dtcycle	0	
cycle	P	events from which exps? Prim/Second/Both
ra_targ	272.462917	Observer's specified target RA [deg]
dec_targ	-19.731028	Observer's specified target Dec [deg]
ra_nom	272.46116369939	Nominal RA [deg]
dec_nom	-19.732289251929	Nominal Dec [deg]
roll_nom	270.22516253385	Nominal Roll [deg]
revision	2	Processing version of data
ontime	30168.398201823	Sum of GTIs [s]
livetime	27361.144750429	Livetime [s]
ontime7	30168.398201823	Sum of GTIs [s]
l2events	24310	Number of level 2 events



2 OBI

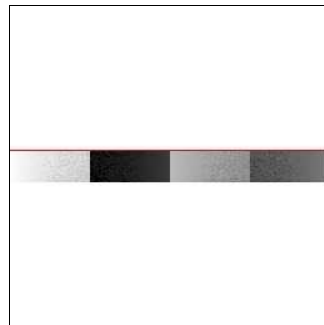
2.1 OBI

2.1.1 Images



2.1.2 Bias

Chip 7



2.1.3 Parameters

obi_num	0	Obi number	sched_exp_time	30000.000000	[s] Scheduled observation exposure time
ascdsver	8.4.3.1	Processing system revision	ontime	30168.398201823	Sum of GTIs [s]
caldsver	4.4.9	 	ontime7	30168.398201823	Sum of GTIs [s]
date	2012-04-09T15:41:04	Date and time of file creation	l1events	45055	Number of level 1 events
revision	2	Processing version of data			

2.1.4 Events

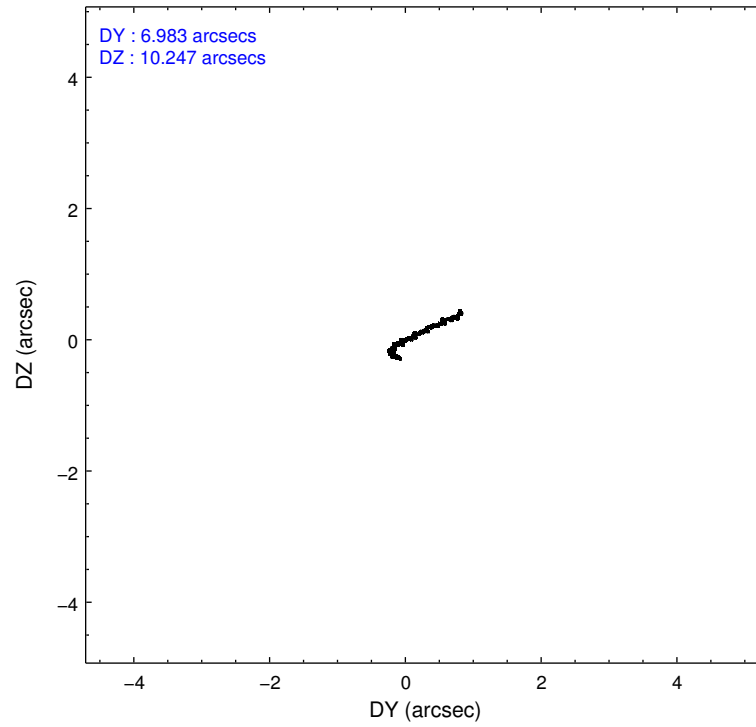
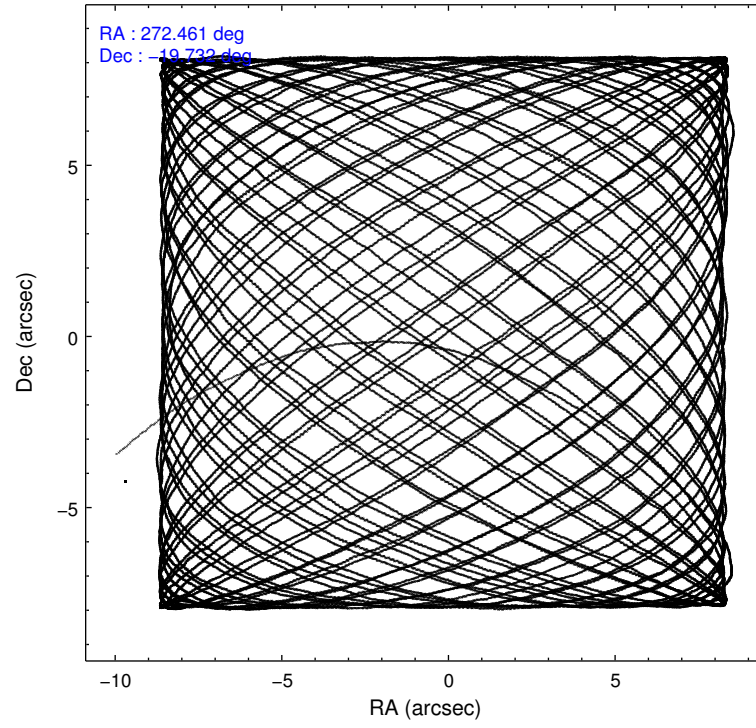
	ccd 7
level 1 events	45055
rejected events	20111
rejected %	44%

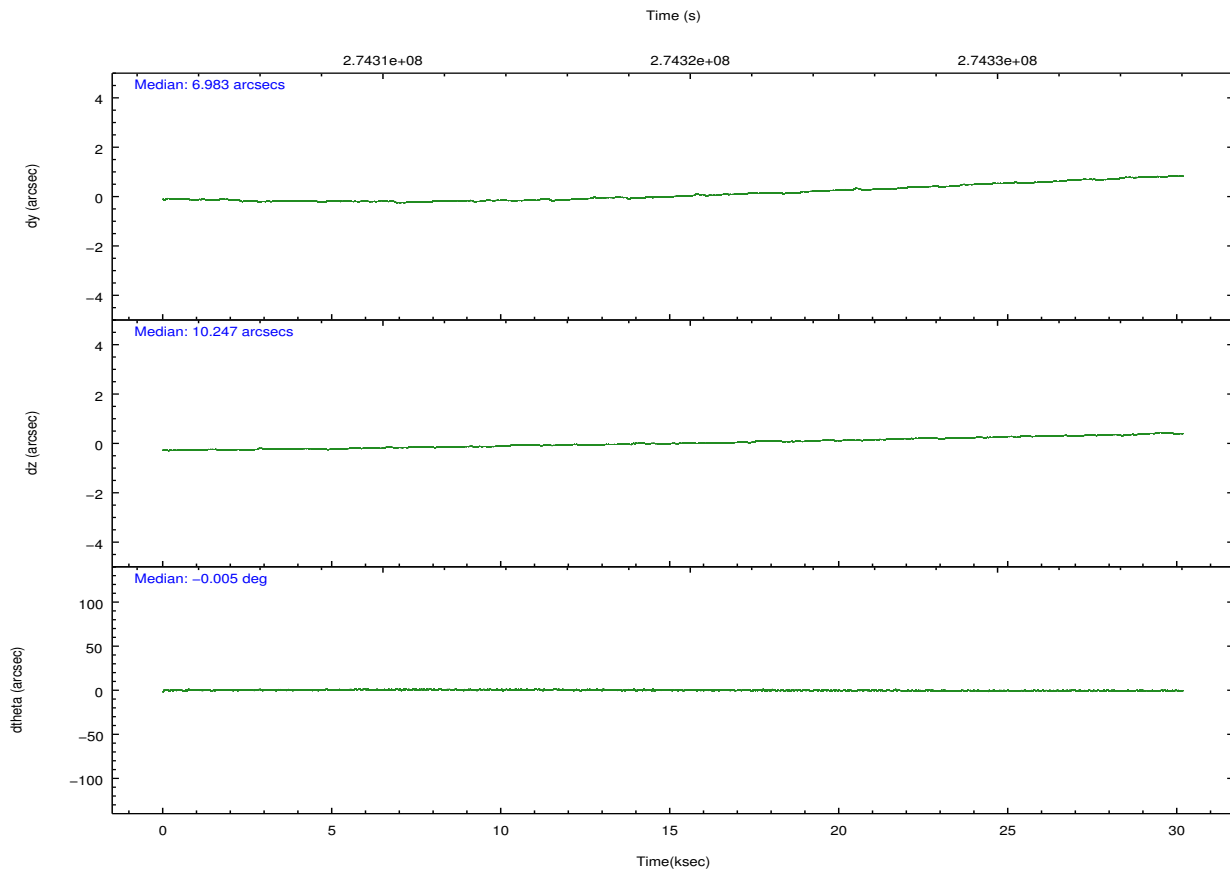
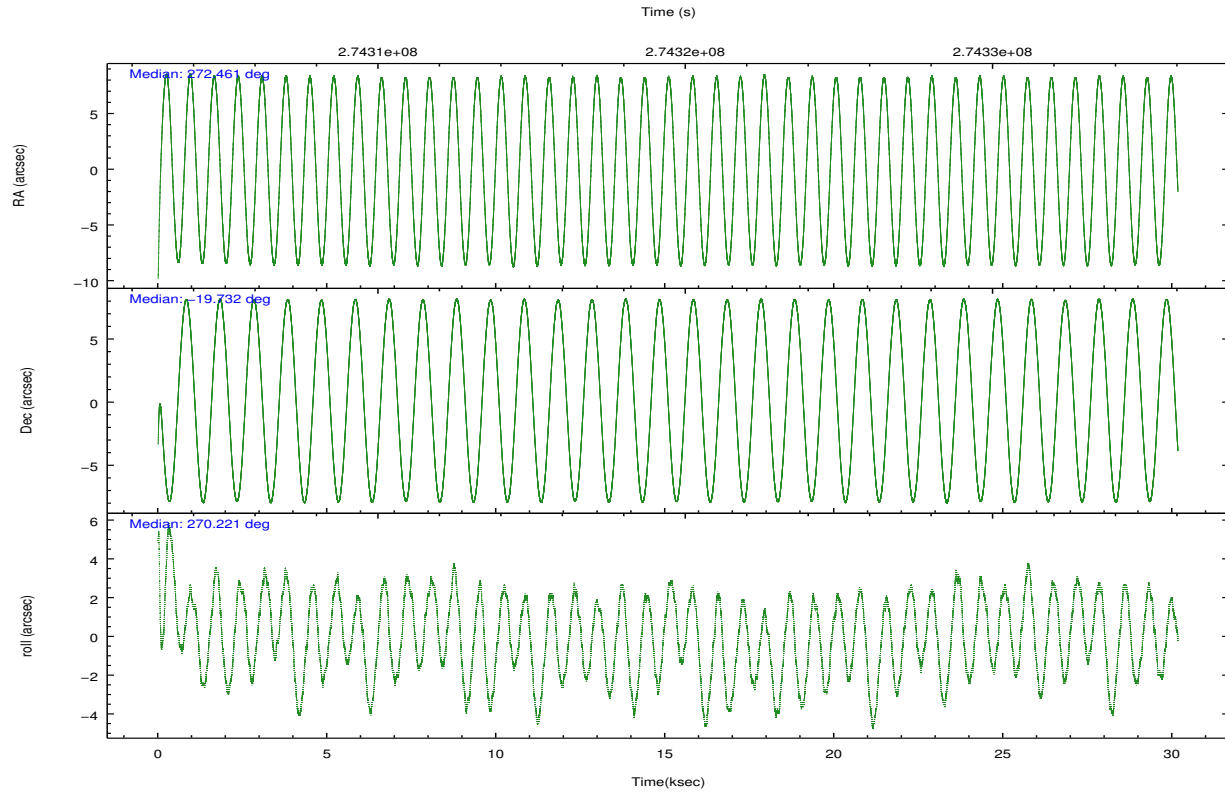
	ccd 7
grade 0 events	4078
	9%
grade 1 events	64
	0%
grade 2 events	5456
	12%
grade 3 events	3235
	7%
grade 4 events	3122
	6%
grade 5 events	3672
	8%
grade 6 events	9469
	21%
grade 7 events	15959
	35%

2.2 Compared Parameters

Parameter	Planned	Actual	Parameter	Planned	Actual
Instrument	ACIS	ACIS	Obspar format version number	7	7
Detector	ACIS-7	ACIS-7	Obspar file type	PREDICTED	ACTUAL
Grating	NONE	NONE	Obspar update status	NONE	UPDATED
Data mode	VFAINT	VFAINT	Number of optional ACIS chips dropped	0	0
Observation mode	POINTING	POINTING	On-chip summing requested	N	N
[deg] Pointing RA	272.446247	272.4611636993903	Subarray requested	CUSTOM	CUSTOM
[deg] Pointing Dec	-19.708939	-19.73228925192872	Subarray start row	462	462
[deg] Pointing Roll	270.063498	270.2251625338514	Subarray row count	100	100
[mm] SIM focus pos	-0.684267	-0.6828225247311905	Alternating exposures requested	N	N
[mm] SIM defocus	0	0.001444936568705701	[s] Primary exposure time	0.000000	0.4
[mm] SIM translation stage pos	-190.132523	-190.1425803651734			
[mm] SIM translation stage offset	0	0.01005778216563158			
[s] Observation start time (MET)	274304535.184000	274303563.04761			
Observation start date	2006-09-10T19:41:10	2006-09-10T19:26:03			
[s] Observation end time (MET)	274334535.184000	274335373.9241			
Observation end date	2006-09-11T04:01:10	2006-09-11T04:16:13			
Read mode	TIMED	TIMED			

2.3 Aspect



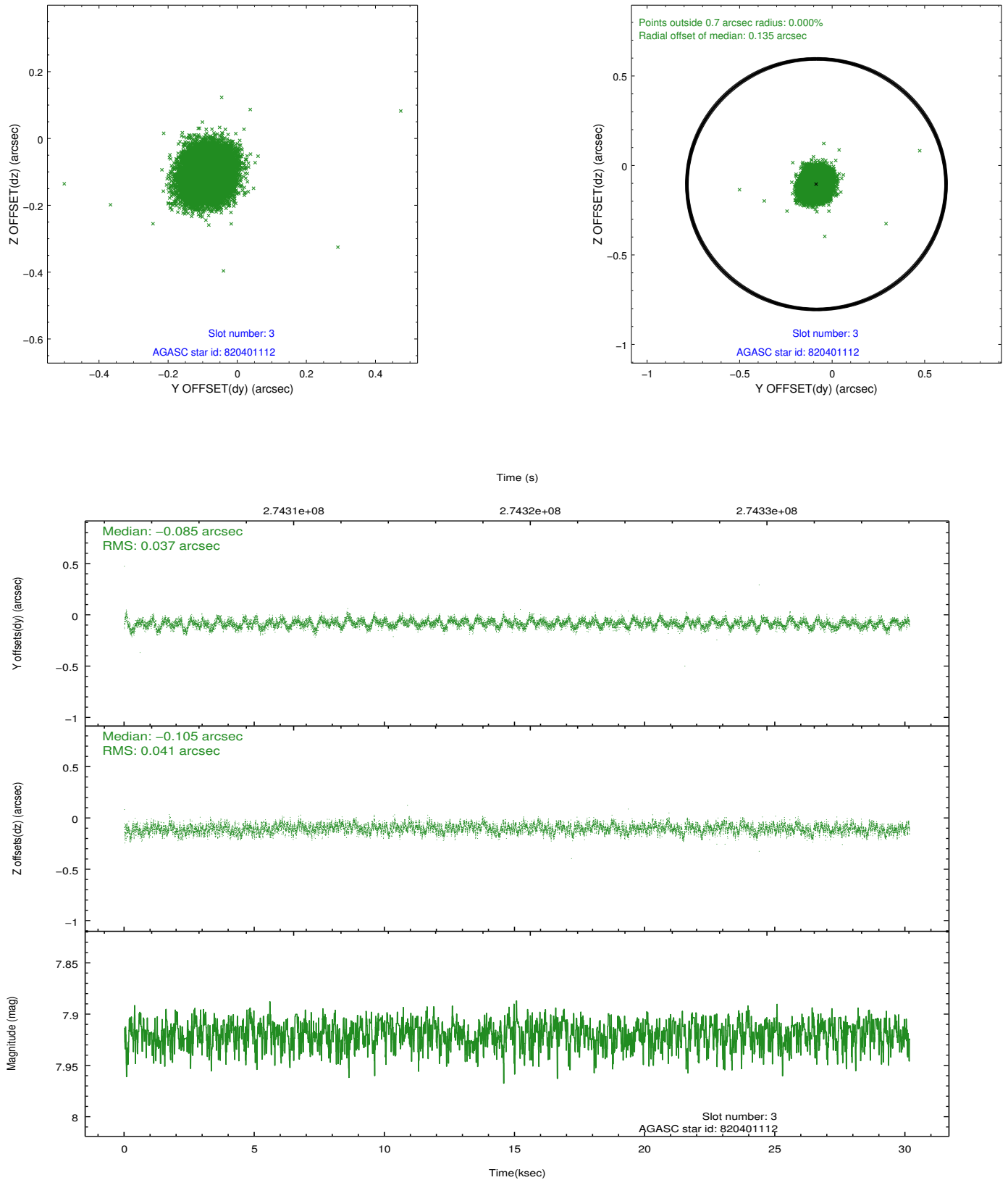


Slot Statistics

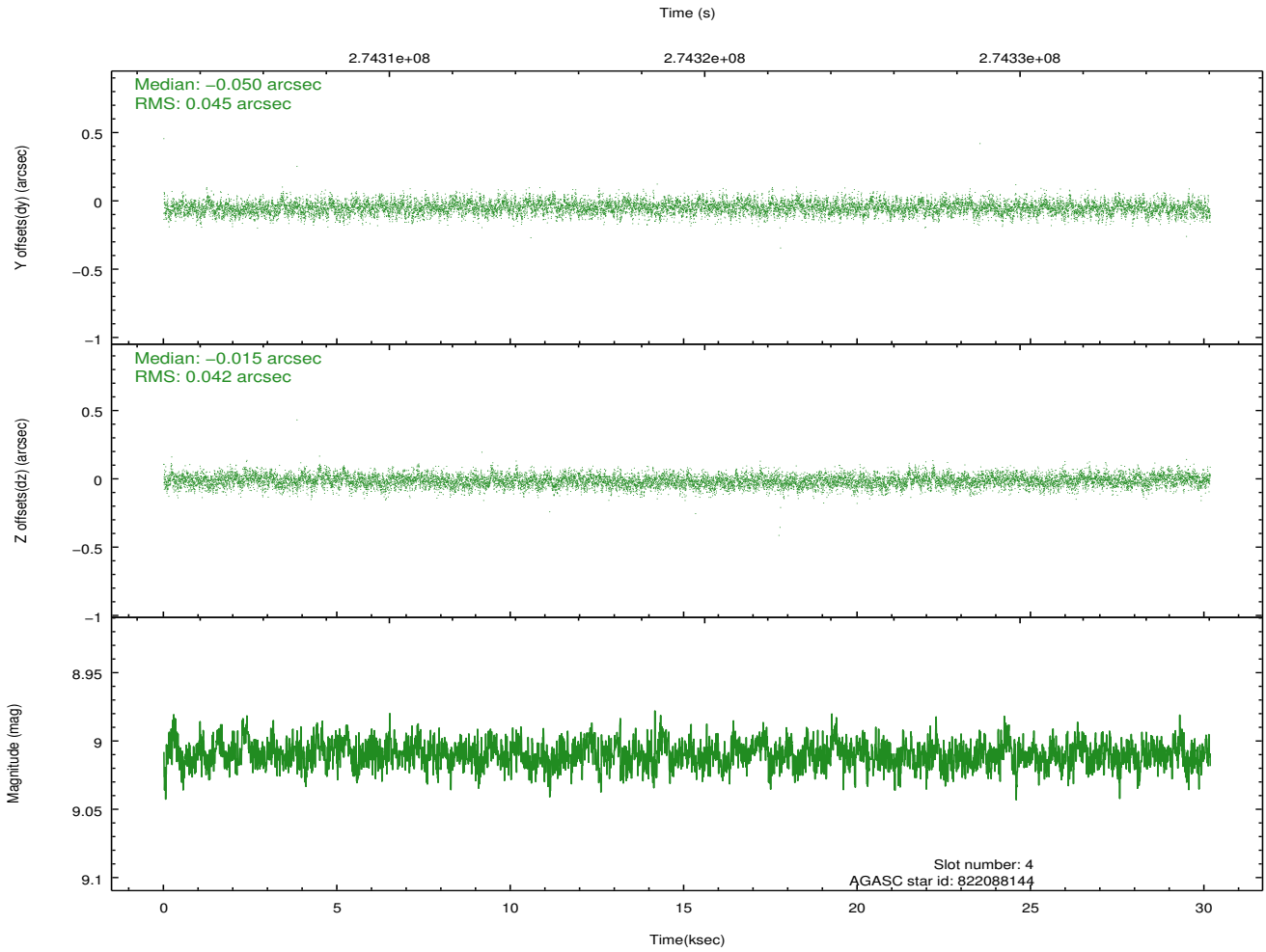
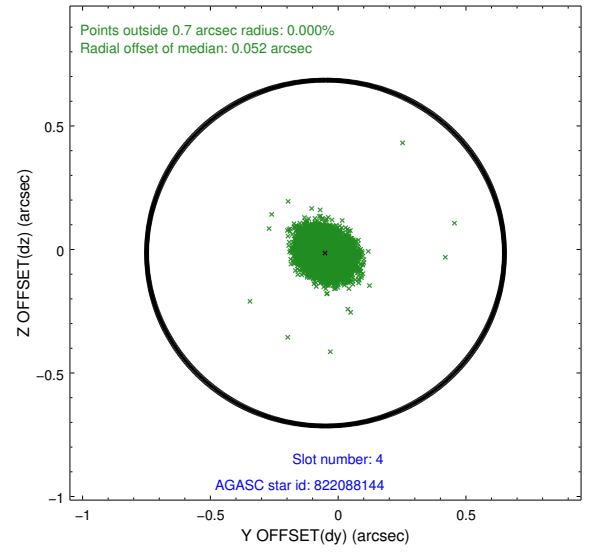
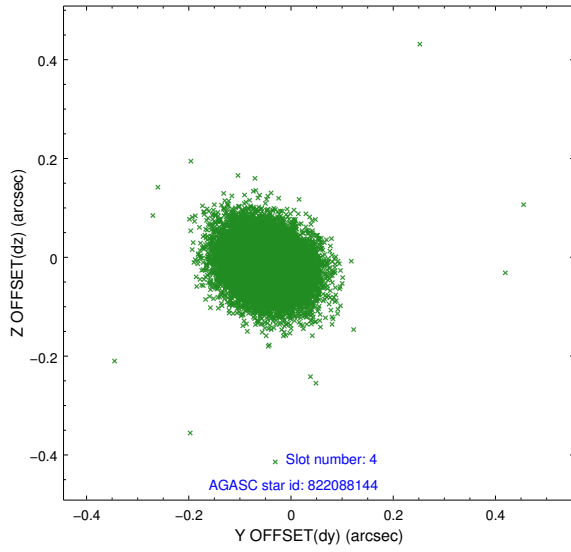
slot	status	id	mag	n_pts	med_dy	med_dz	dr1	dr2	ra	dec	mean_y	mean_z
0	FID	ACIS-S-2	7.11	7359	-0.061	-0.028	0.010	0.018	0.000000	0.000000	-759.89	-1731.52
1	FID	ACIS-S-4	7.21	7358	0.112	0.037	0.012	0.021	0.000000	0.000000	2153.49	177.02
2	FID	ACIS-S-5	7.23	7358	-0.081	0.000	0.014	0.028	0.000000	0.000000	-1812.70	170.65
3	GUIDE	820401112	7.92	14715	-0.085	-0.105	0.059	0.094	271.884761	-19.293988	-1492.67	-1906.29
4	GUIDE	822088144	9.01	14707	-0.050	-0.015	0.065	0.105	272.849323	-19.208046	-1800.22	1372.21
5	GUIDE	822102416	7.50	14717	0.145	-0.067	0.047	0.076	272.173216	-20.087156	1361.53	-924.39
6	GUIDE	822087128	7.93	14706	0.097	0.057	0.056	0.089	272.956072	-20.371006	2388.22	1718.34
7	GUIDE	822085152	9.00	14703	-0.108	0.128	0.085	0.144	272.974056	-19.057083	-2341.92	1798.91

2.4 Star Slots

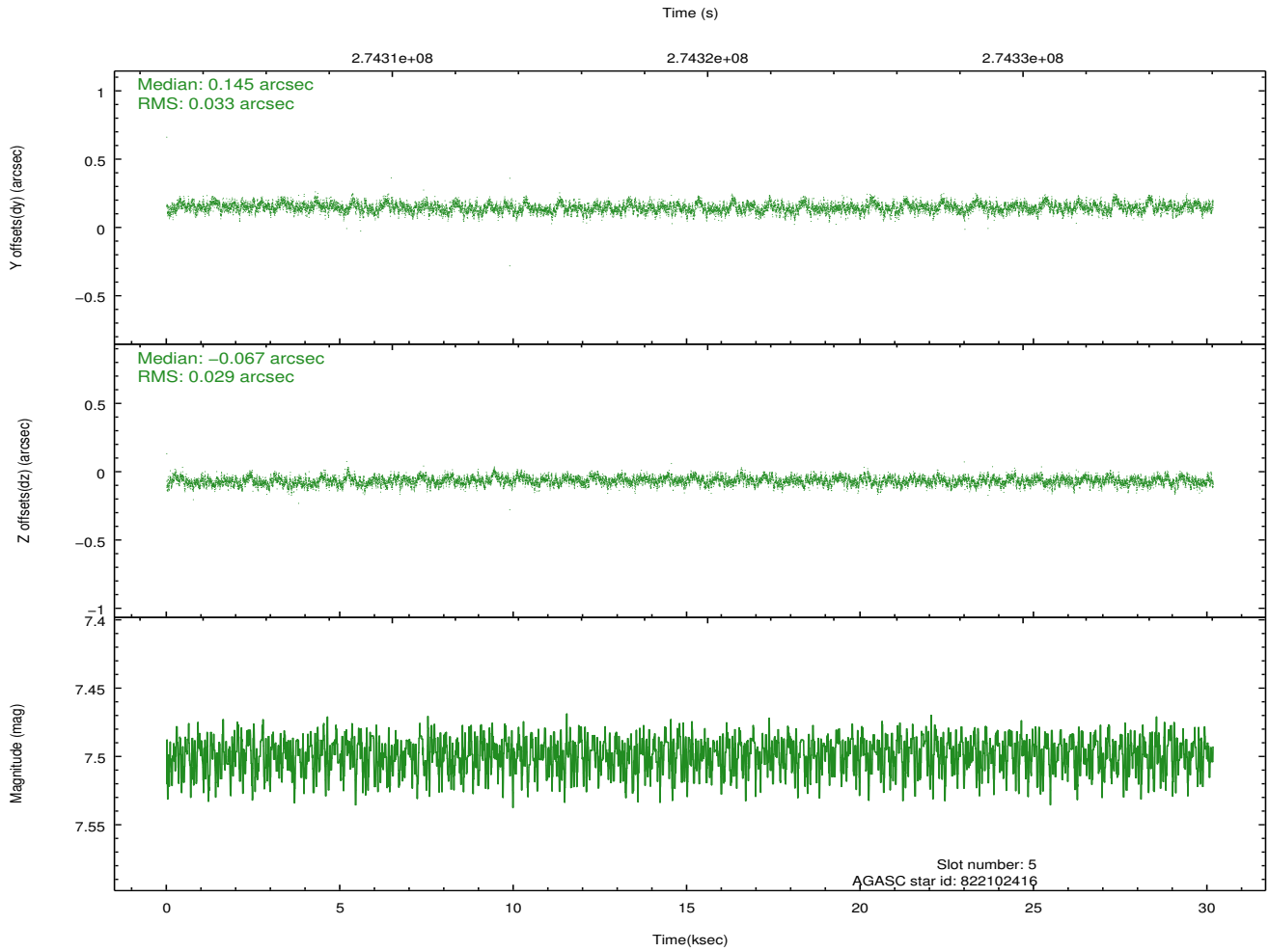
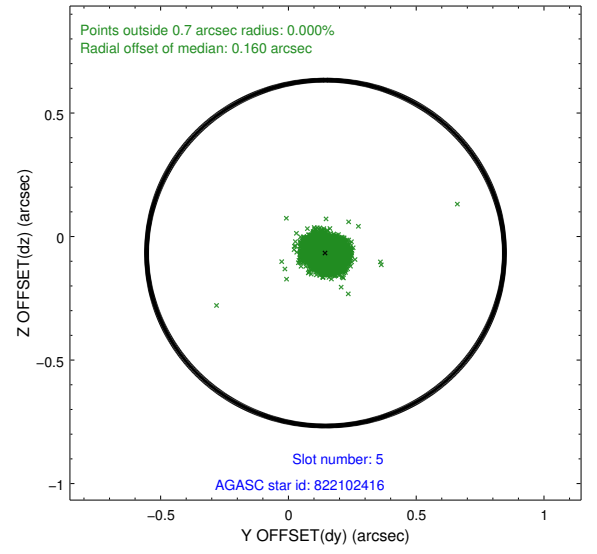
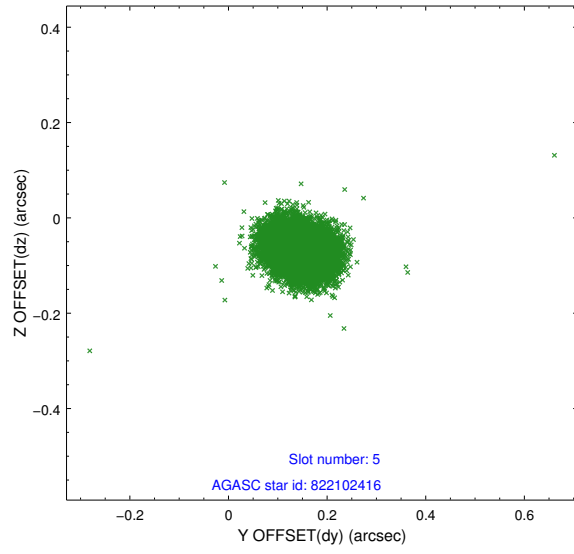
2.4.1 Slot 3



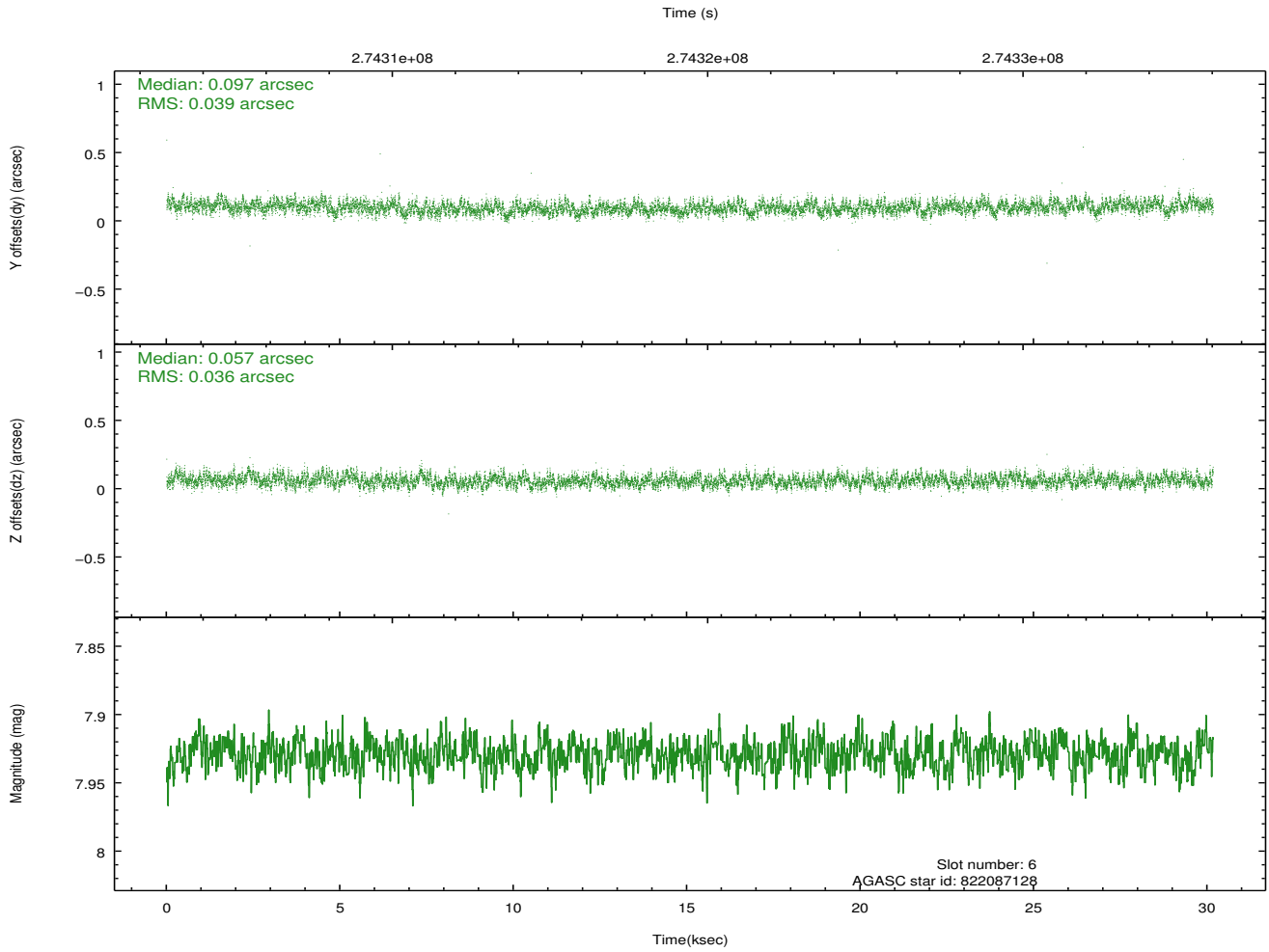
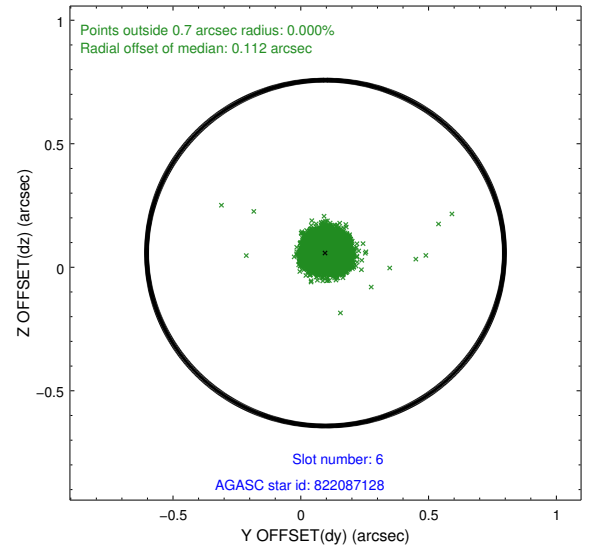
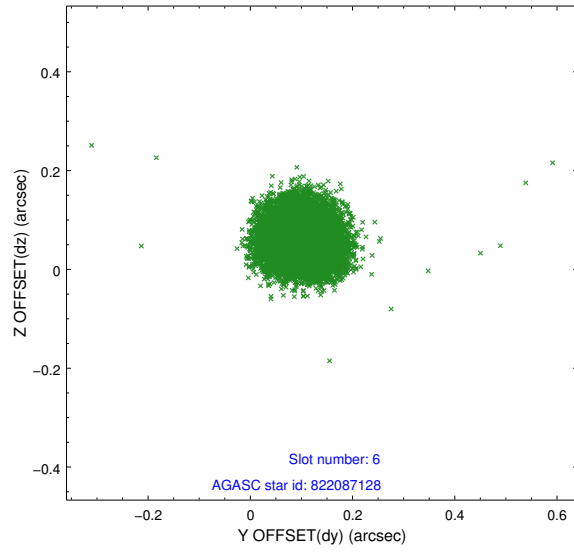
2.4.2 Slot 4



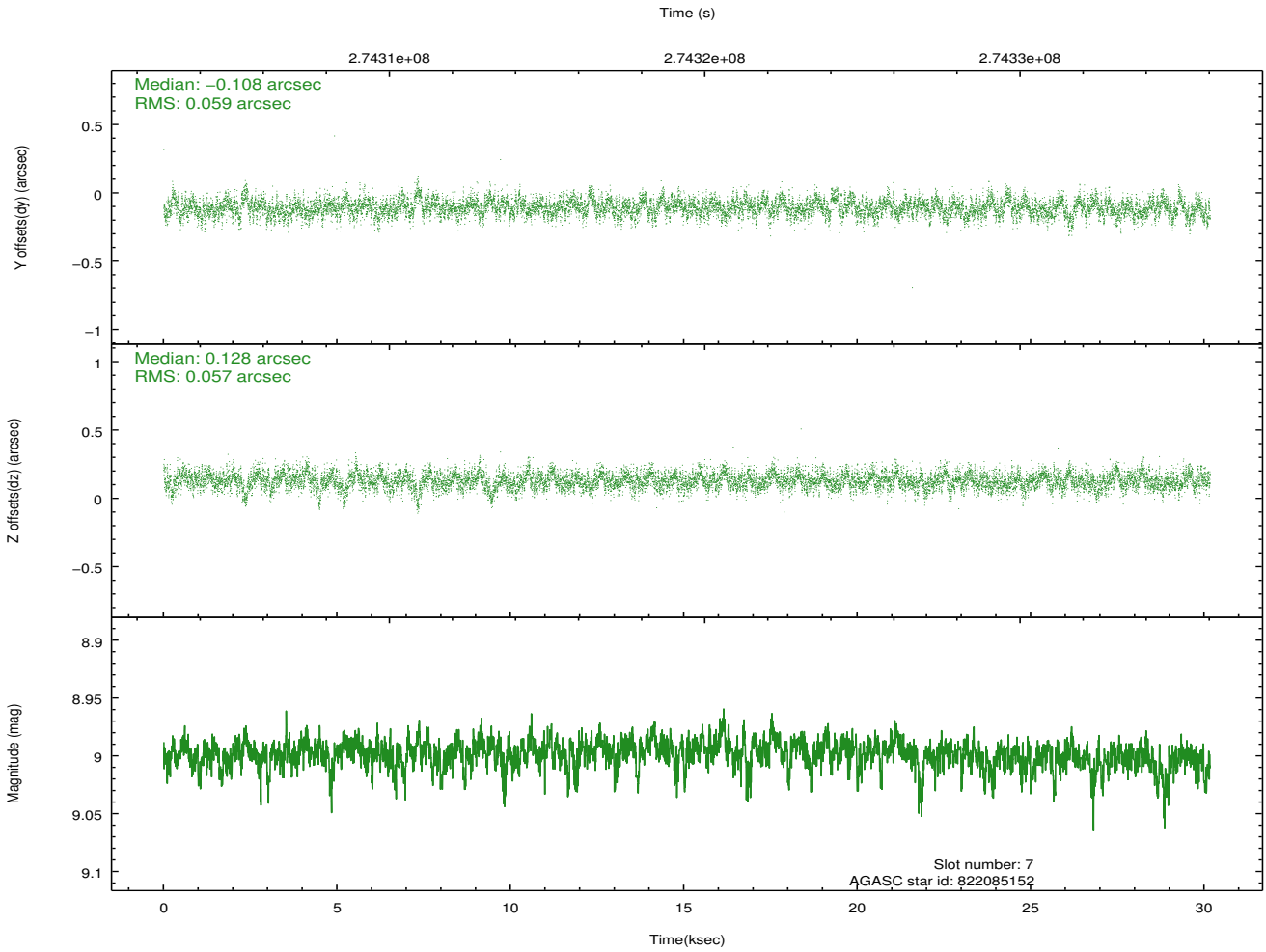
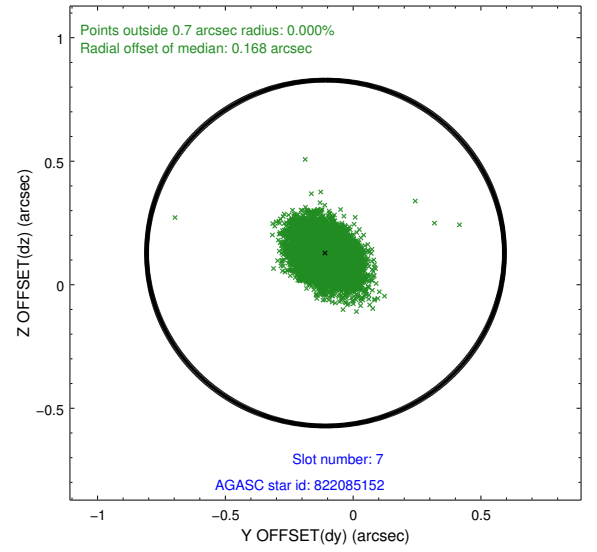
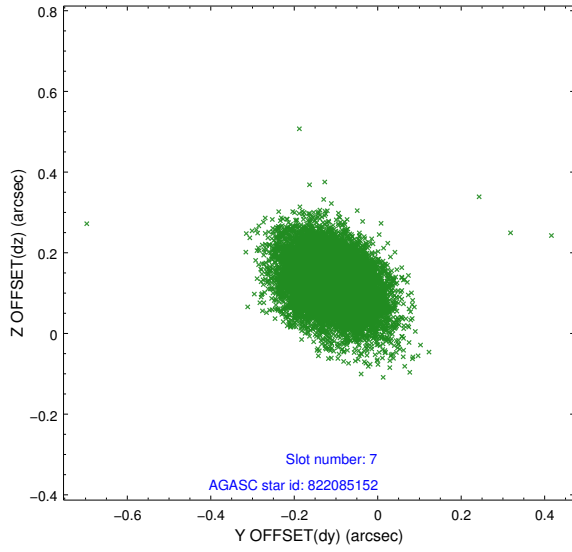
2.4.3 Slot 5



2.4.4 Slot 6

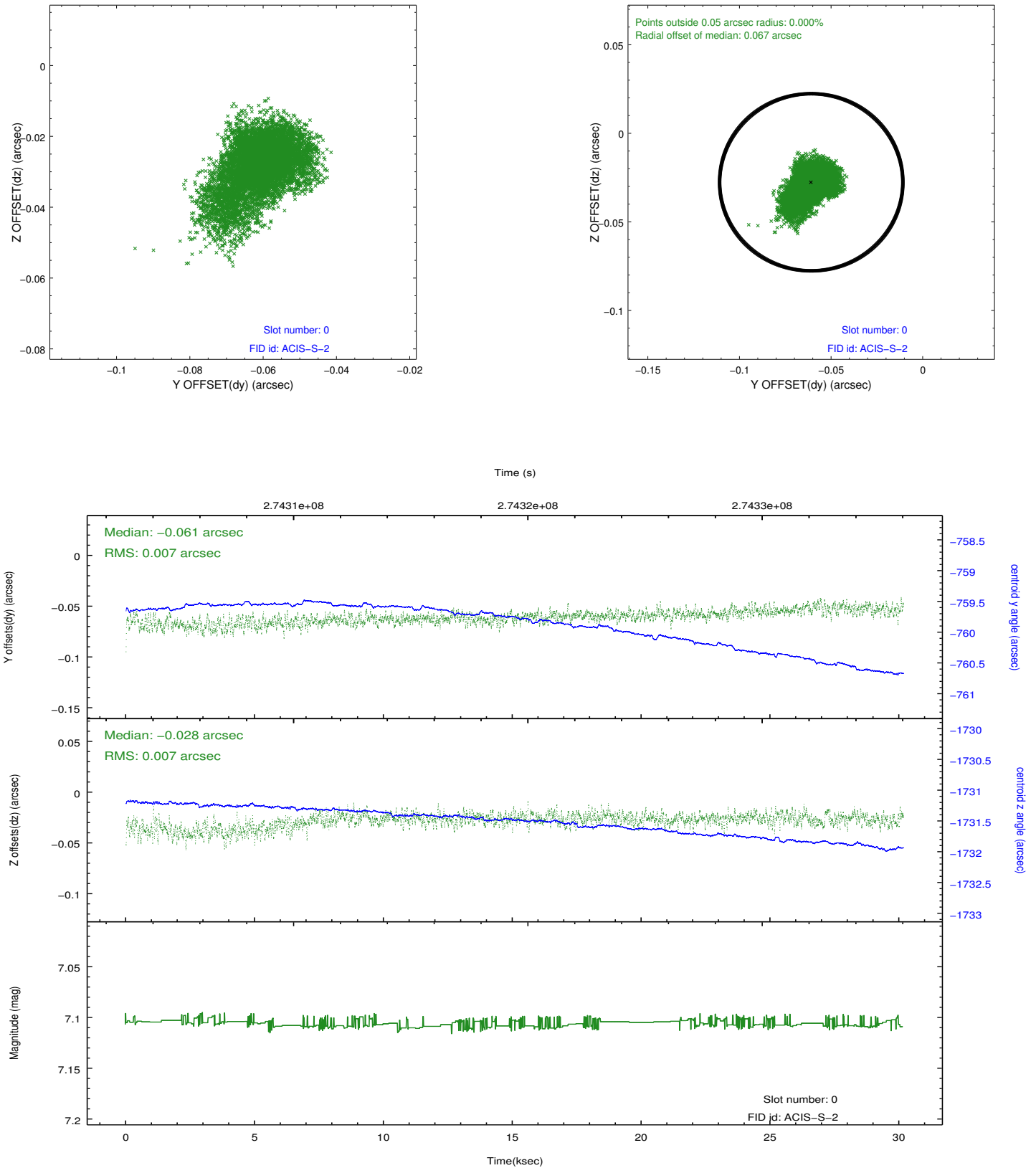


2.4.5 Slot 7

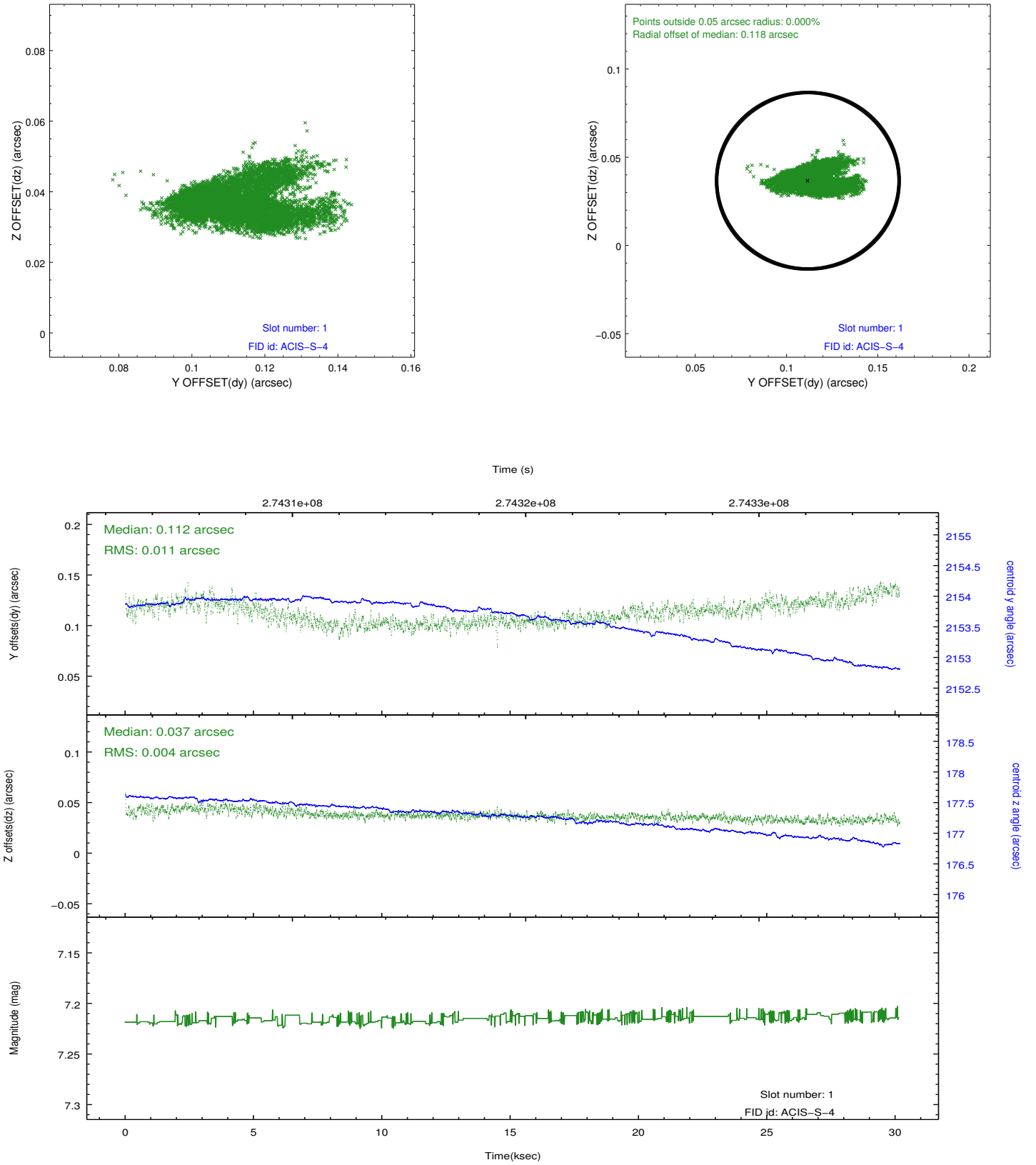


2.5 FID Slots

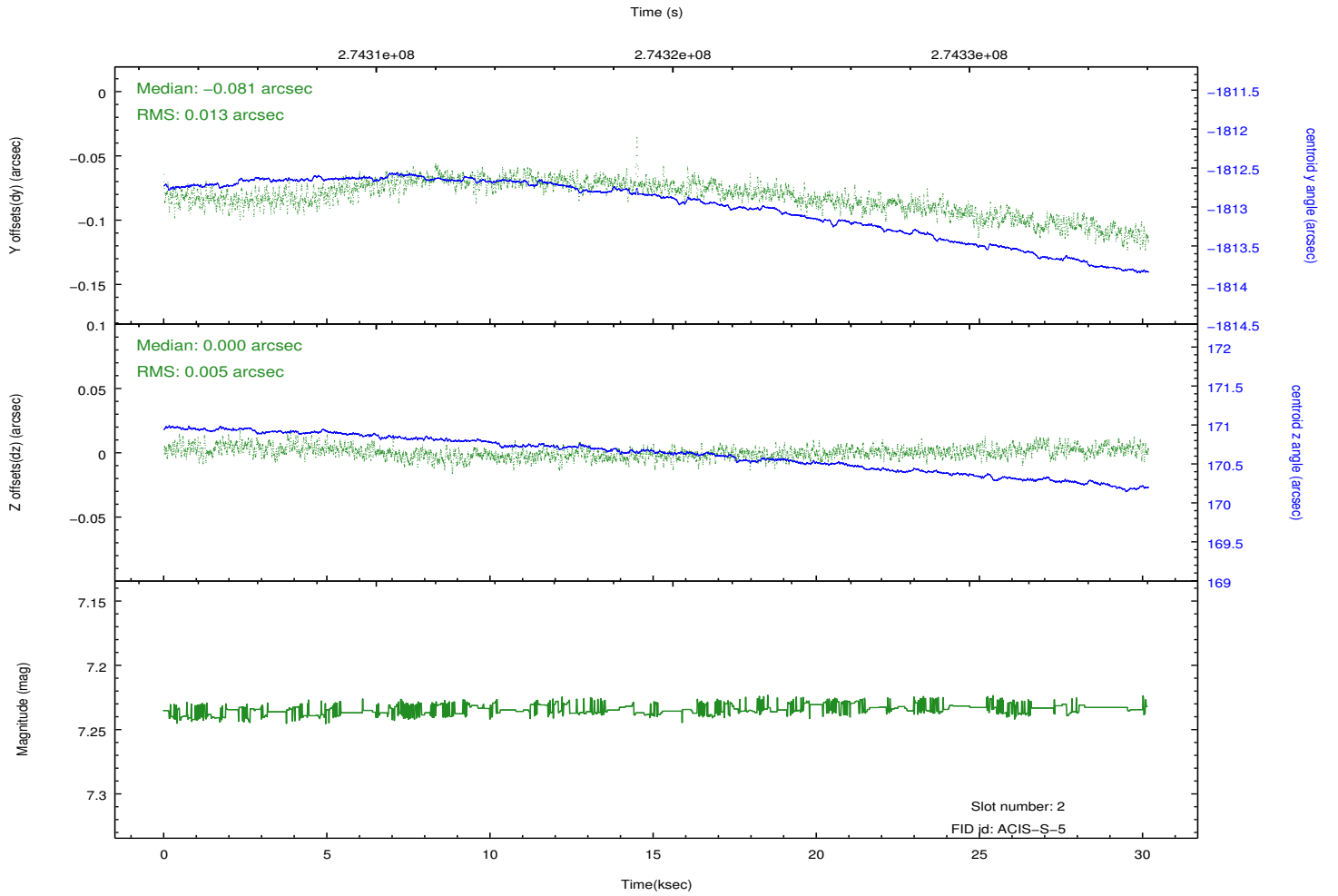
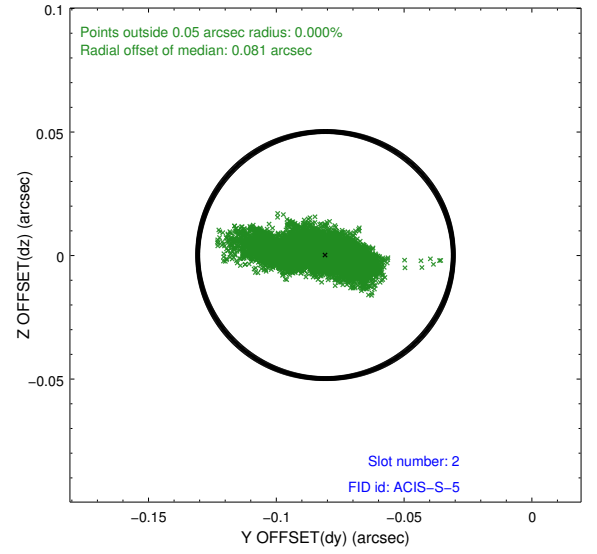
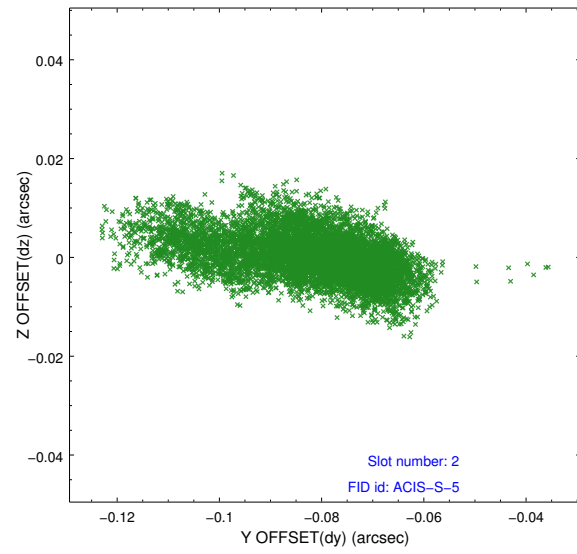
2.5.1 Slot 0



2.5.2 Slot 1



2.5.3 Slot 2



A Summary

A.1 Status

V&V Scientist	Beth Sundheim
V&V Date (YYYY-MM-DD)	2012.04.09
V&V Edition	1
V&V Disposition and Status	OK
V&V Charge Time	30.1683982

A.2 Comments