

V&V Reference Report

L2 ASCDS Version : 8.4.3

Observation 6370 - L2 Version 2
Chandra X-Ray Center

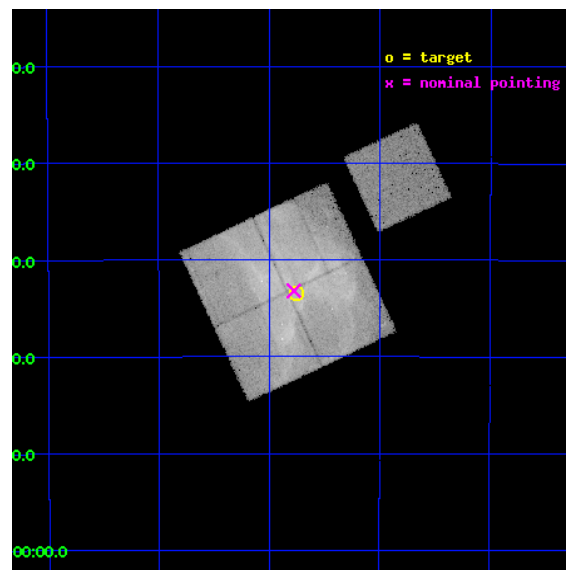
L2 Processing Date : Mar 31 2012

Contents

1	Front	2
2	OBI	3
2.1	OBI	3
2.1.1	Images	3
2.1.2	Bias	3
2.1.3	Parameters	4
2.1.4	Events	4
2.2	Compared Parameters	5
2.3	Aspect	6
2.4	Star Slots	9
2.4.1	Slot 3	9
2.4.2	Slot 4	10
2.4.3	Slot 5	11
2.4.4	Slot 6	12
2.4.5	Slot 7	13
2.5	FID Slots	14
2.5.1	Slot 0	14
2.5.2	Slot 1	15
2.5.3	Slot 2	16
A	Summary	17
A.1	Status	17
A.2	Comments	17

1 Front

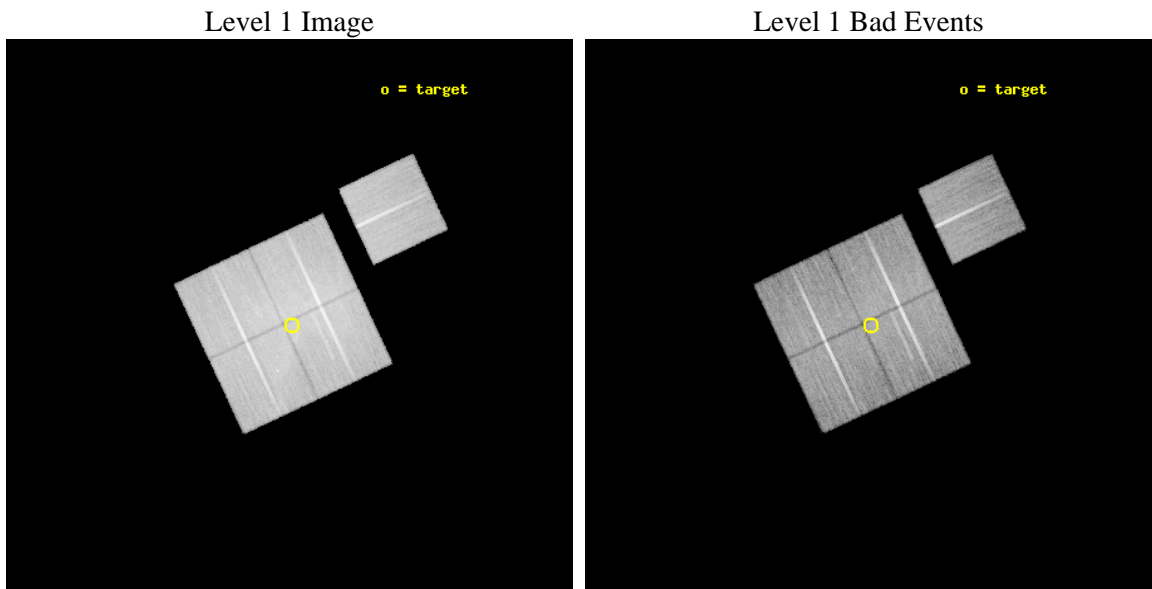
seq_num	500608	Sequence number
obs_id	6370	Observation id
title	Searching for spectral and morphological changes of X-ray structures in SNR RX J1713.7-3946	Proposal title
observer	Dr Yasunobu Uchiyama	Principal investigator
object	RX J1713.7-3946 NW	Source name
dtcycle	0	
cycle	P	events from which exps? Prim/Second/Both
ra_targ	257.939583	Observer's specified target RA [deg]
dec_targ	-39.556444	Observer's specified target Dec [deg]
ra_nom	257.9440461441	Nominal RA [deg]
dec_nom	-39.55333293264	Nominal Dec [deg]
roll_nom	64.833368287132	Nominal Roll [deg]
revision	2	Processing version of data
ontime	30159.85893178	Sum of GTIs [s]
livetime	29765.798171471	Livetime [s]
ontime0	30156.718021154	Sum of GTIs [s]
ontime1	30156.717981339	Sum of GTIs [s]
ontime2	30150.436000973	Sum of GTIs [s]
ontime3	30159.85893178	Sum of GTIs [s]
ontime6	30162.999941975	Sum of GTIs [s]
l2events	274564	Number of level 2 events



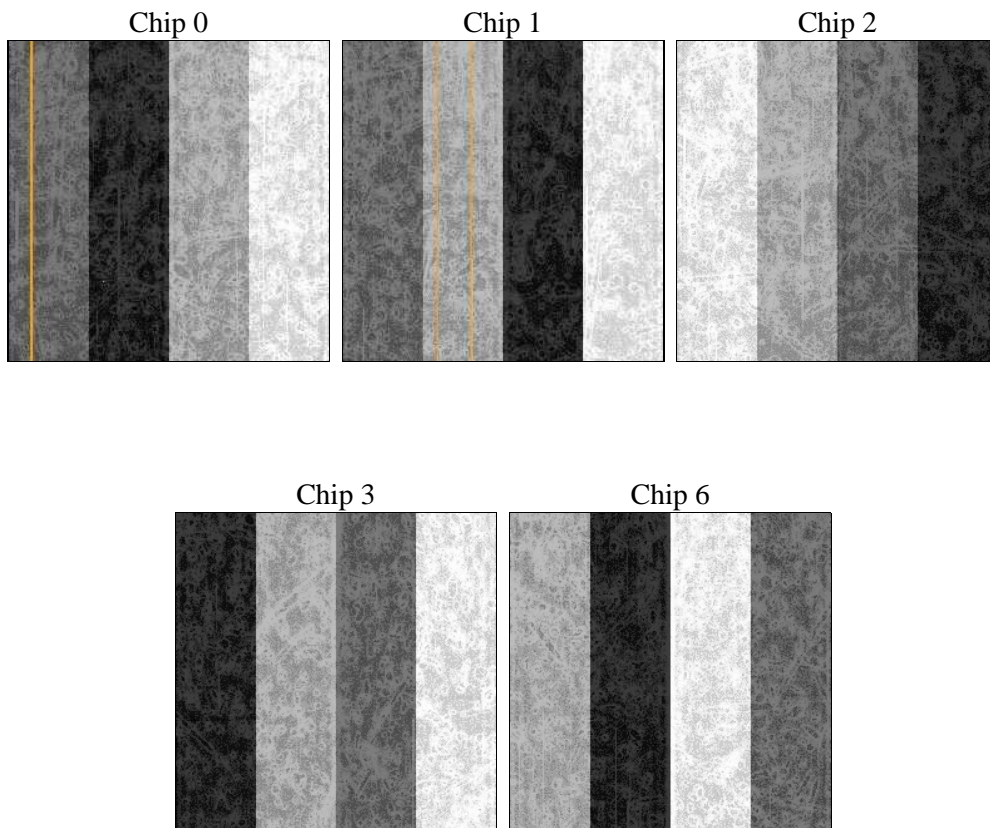
2 OBI

2.1 OBI

2.1.1 Images



2.1.2 Bias



2.1.3 Parameters

obi_num	0	Obi number	sched_exp_time	30000.000000	[s] Scheduled observation exposure time
ascdsver	8.4.3	Processing system revision	ontime	30159.85893178	Sum of GTIs [s]
caldsver	4.4.8	 	ontime0	30156.718021154	Sum of GTIs [s]
date	2012-03-31T11:43:17	Date and time of file creation	ontime1	30156.717981339	Sum of GTIs [s]
revision	2	Processing version of data	ontime2	30150.436000973	Sum of GTIs [s]
			ontime3	30159.85893178	Sum of GTIs [s]
			ontime6	30162.999941975	Sum of GTIs [s]
			l1events	1312389	Number of level 1 events

2.1.4 Events

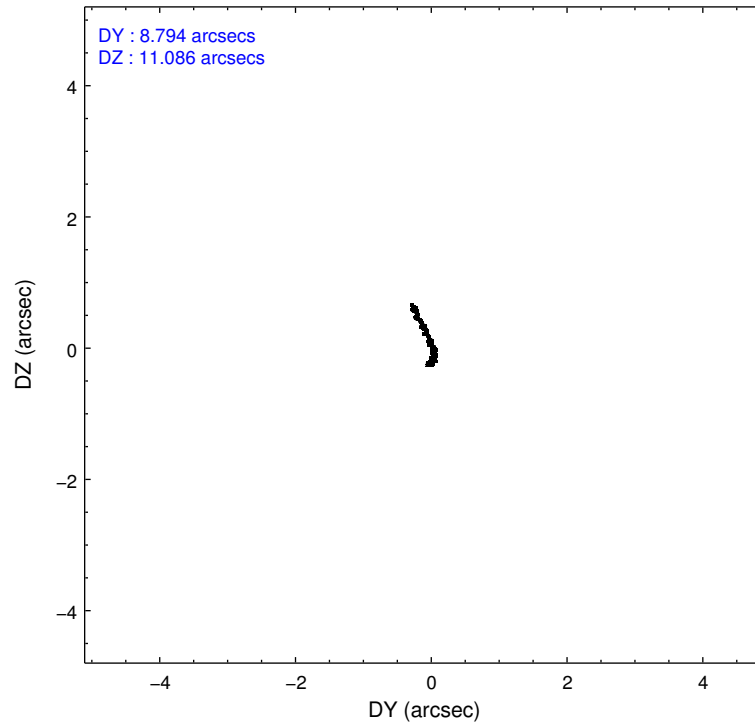
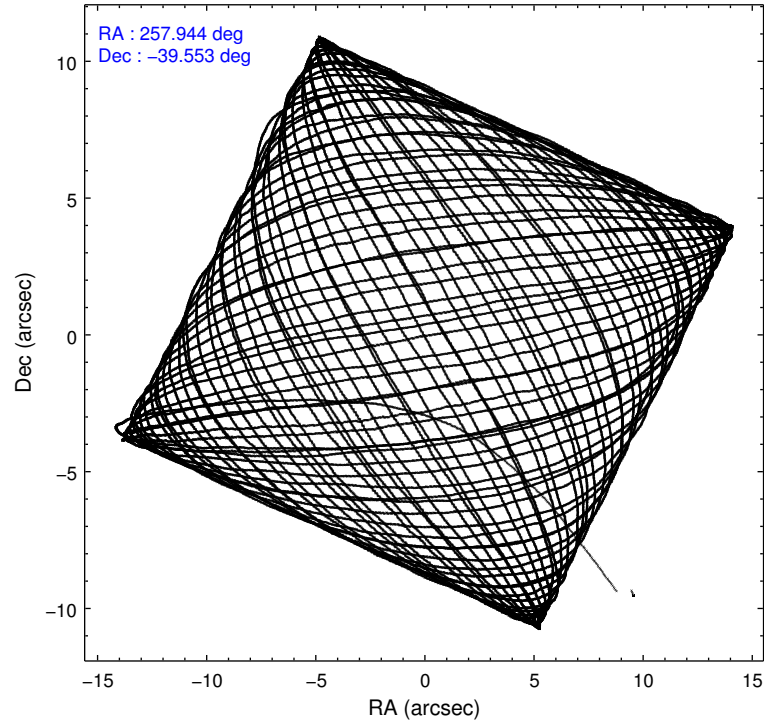
	ccd 0	ccd 1	ccd 2	ccd 3	ccd 6
level 1 events	269454	256100	291900	271842	223093
rejected events	196244	188116	216502	205707	200102
rejected %	72%	73%	74%	75%	89%

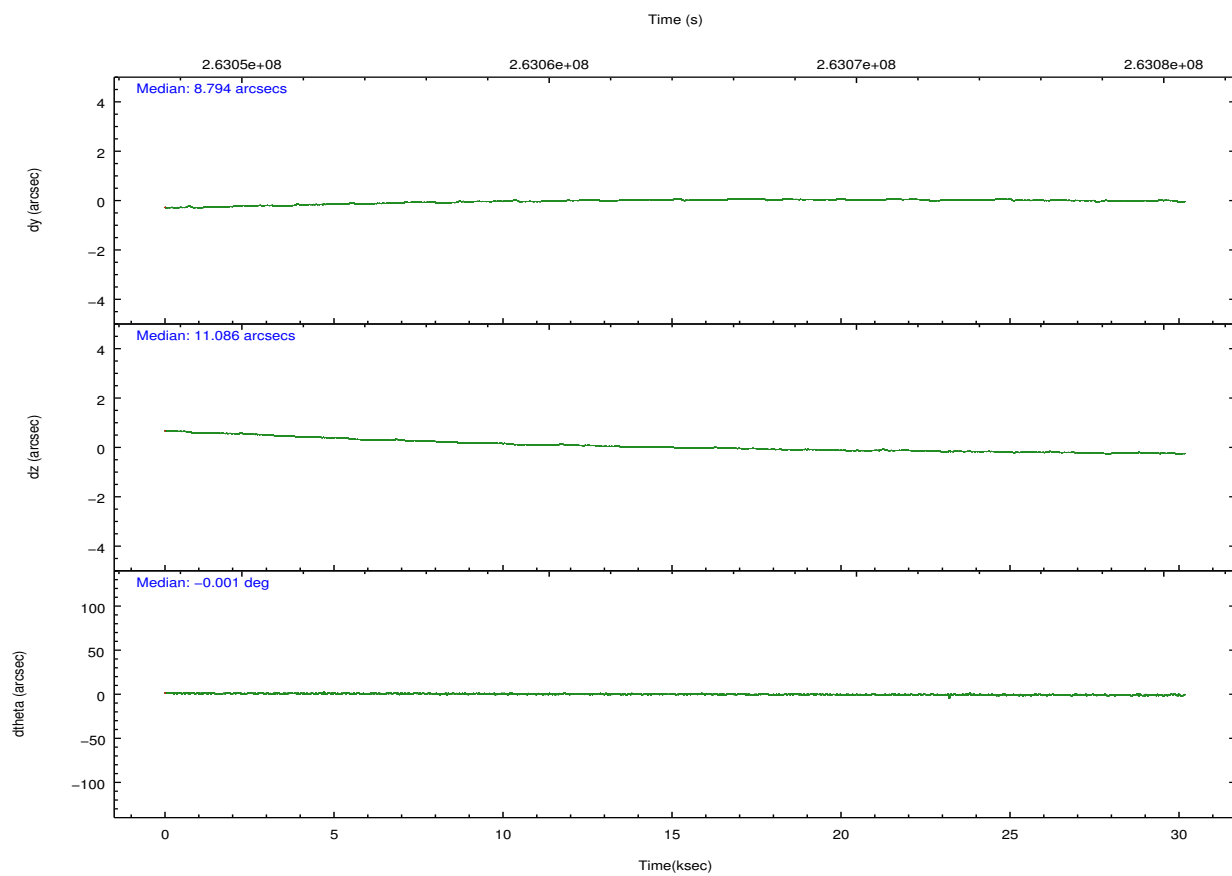
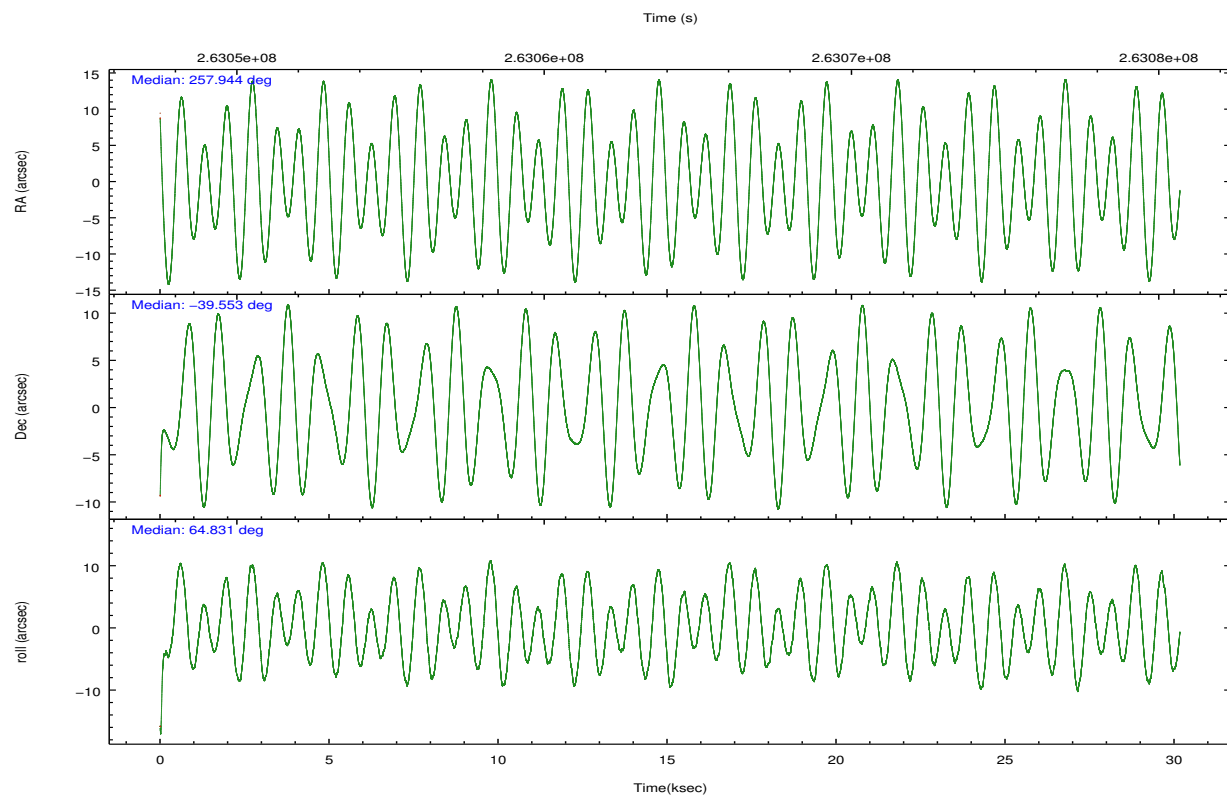
	ccd 0	ccd 1	ccd 2	ccd 3	ccd 6
grade 0 events	49509	44444	51796	44688	9138
	18%	17%	17%	16%	4%
grade 1 events	362	261	431	384	107
	0%	0%	0%	0%	0%
grade 2 events	10779	9960	10915	9386	4995
	4%	3%	3%	3%	2%
grade 3 events	4250	4354	4146	3914	2491
	1%	1%	1%	1%	1%
grade 4 events	4004	4160	4143	3802	2434
	1%	1%	1%	1%	1%
grade 5 events	6472	7332	5988	7794	7095
	2%	2%	2%	2%	3%
grade 6 events	5391	5810	5064	5071	4337
	2%	2%	1%	1%	1%
grade 7 events	188687	179779	209417	196803	192496
	70%	70%	71%	72%	86%

2.2 Compared Parameters

Parameter	Planned	Actual	Parameter	Planned	Actual
Instrument	ACIS	ACIS	Obspar format version number	7	7
Detector	ACIS-01236	ACIS-01236	Obspar file type	PREDICTED	ACTUAL
Grating	NONE	NONE	Obspar update status	NONE	UPDATED
Data mode	VFAINT	VFAINT	Number of optional ACIS chips dropped	0	0
Observation mode	POINTING	POINTING	On-chip summing requested	N	N
[deg] Pointing RA	257.947206	257.9440461441031	Subarray requested	NONE	NONE
[deg] Pointing Dec	-39.580632	-39.55333293263986	Alternating exposures requested	N	N
[deg] Pointing Roll	64.626699	64.83336828713205	[s] Primary exposure time	0.000000	3.1
[mm] SIM focus pos	-0.782348	-0.7809083437167272			
[mm] SIM defocus	0	0.001439871863259334			
[mm] SIM translation stage pos	-233.592463	-233.5874344608287			
[mm] SIM translation stage offset	0	-0.005018542100998502			
[s] Observation start time (MET)	263049183.184000	263047921.69558			
Observation start date	2006-05-03T13:11:58	2006-05-03T12:52:01			
[s] Observation end time (MET)	263079183.184000	263080206.12208			
Observation end date	2006-05-03T21:31:58	2006-05-03T21:50:06			
Read mode	TIMED	TIMED			

2.3 Aspect



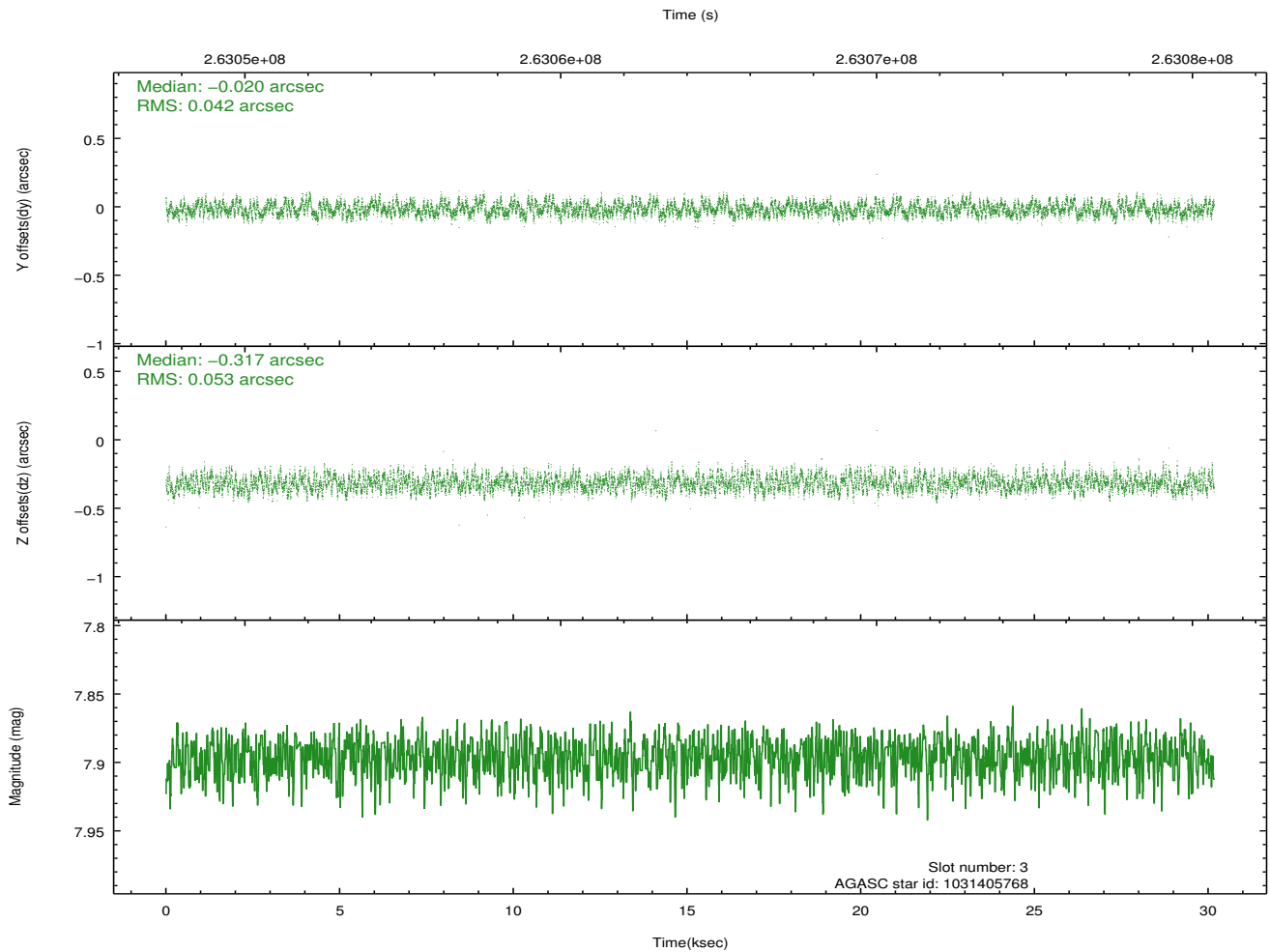
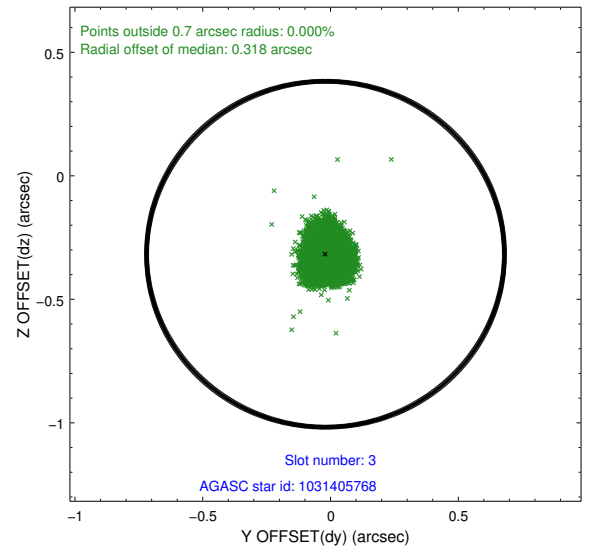
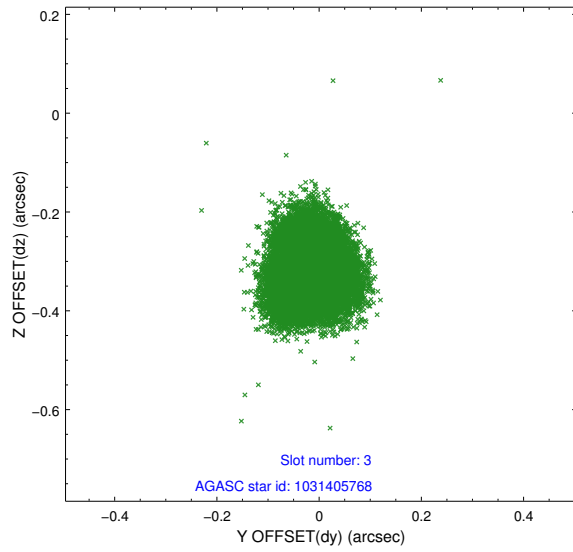


Slot Statistics

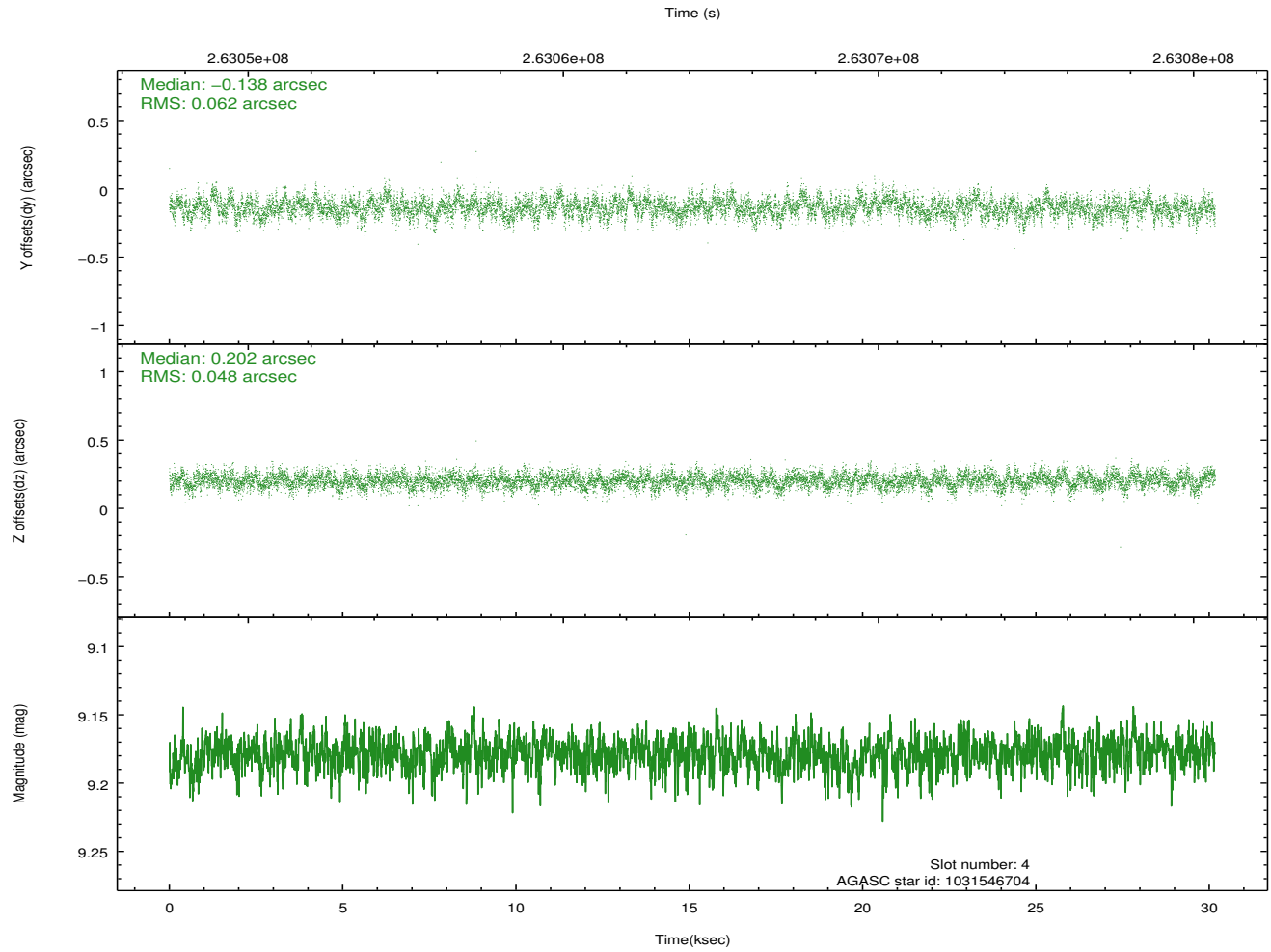
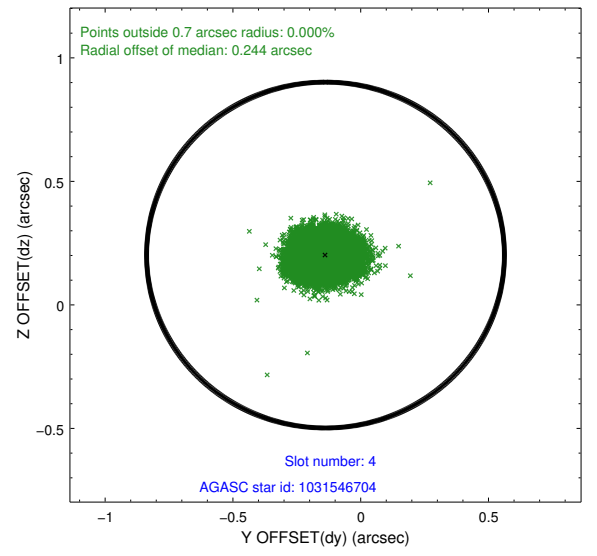
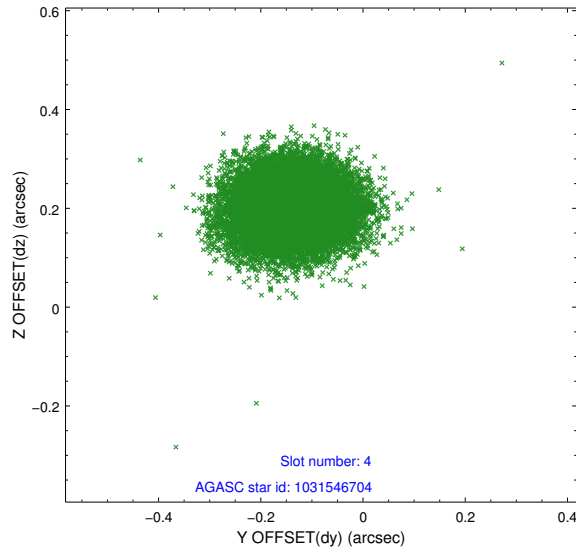
slot	status	id	mag	n_pts	med_dy	med_dz	dr1	dr2	ra	dec	mean_y	mean_z
0	FID	ACIS-I-1	7.24	7358	0.057	-0.053	0.009	0.016	0.000000	0.000000	930.92	-834.72
1	FID	ACIS-I-5	7.23	7359	-0.209	0.055	0.009	0.016	0.000000	0.000000	-1817.38	1062.88
2	FID	ACIS-I-6	7.24	7359	0.061	0.069	0.009	0.021	0.000000	0.000000	396.43	1707.44
3	GUIDE	1031405768	7.90	14714	-0.020	-0.317	0.073	0.111	257.178877	-39.338023	-135.95	2302.86
4	GUIDE	1031546704	9.18	14711	-0.138	0.202	0.083	0.136	258.328569	-39.071177	2111.63	-177.76
5	GUIDE	1031932008	8.82	14656	0.160	-0.106	0.079	0.129	257.163205	-39.994917	-2282.32	1310.28
6	GUIDE	1031541512	9.33	14705	-0.120	-0.156	0.101	0.168	257.561389	-38.803876	2060.46	2175.31
7	GUIDE	1032068792	8.58	14712	0.118	0.376	0.065	0.105	258.324911	-40.288108	-1858.34	-2029.19

2.4 Star Slots

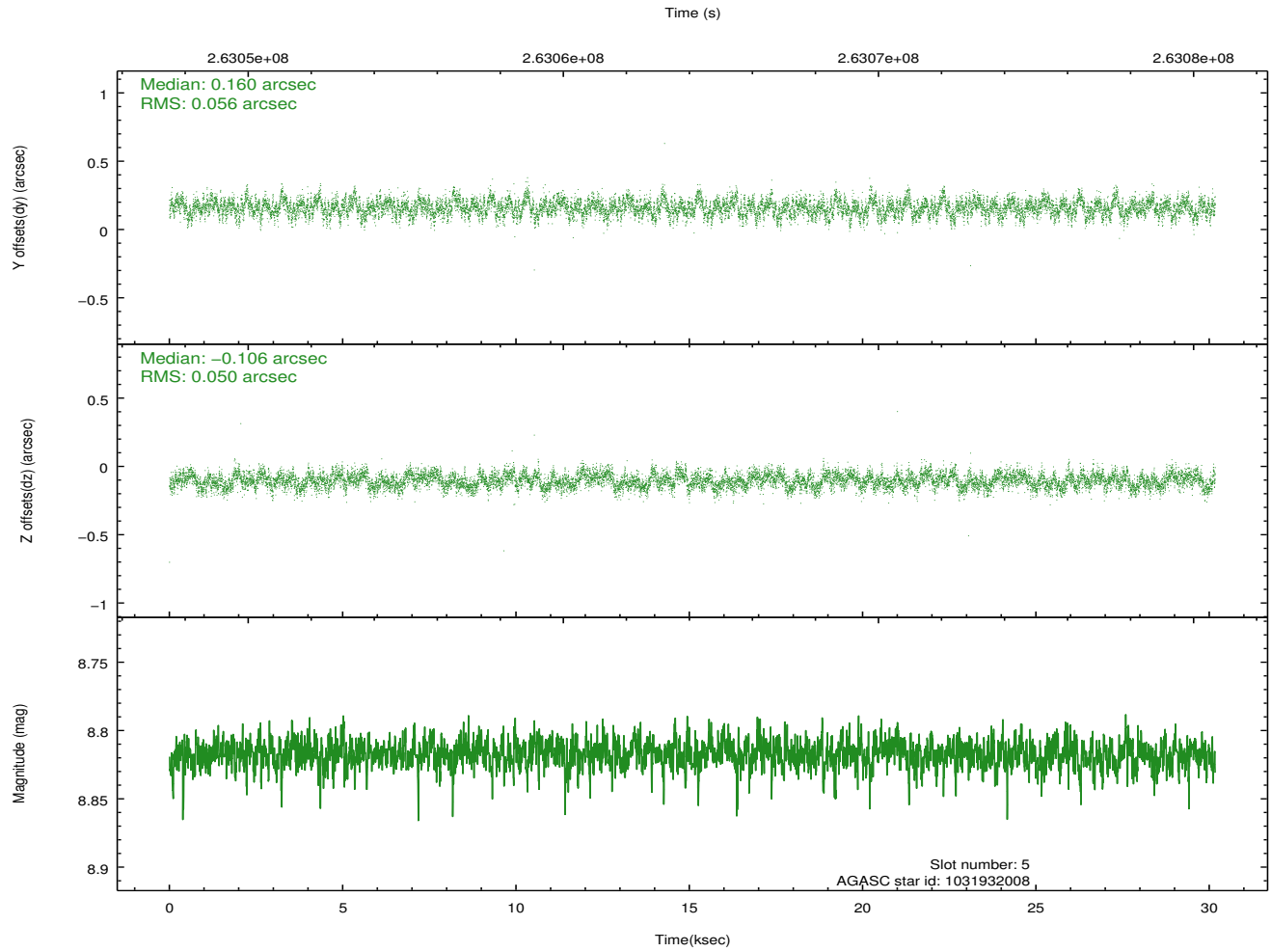
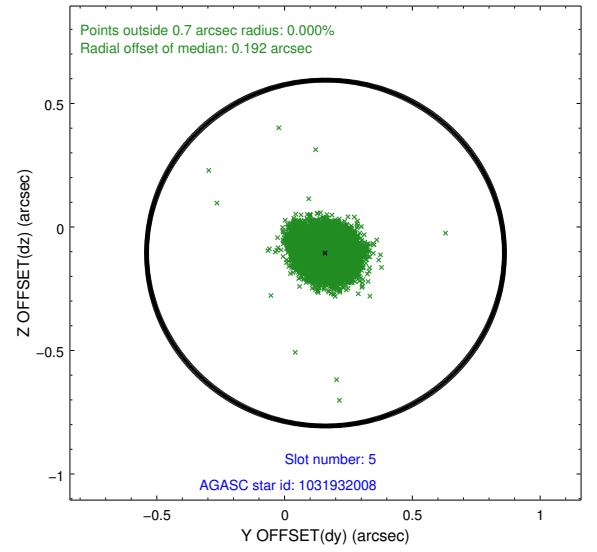
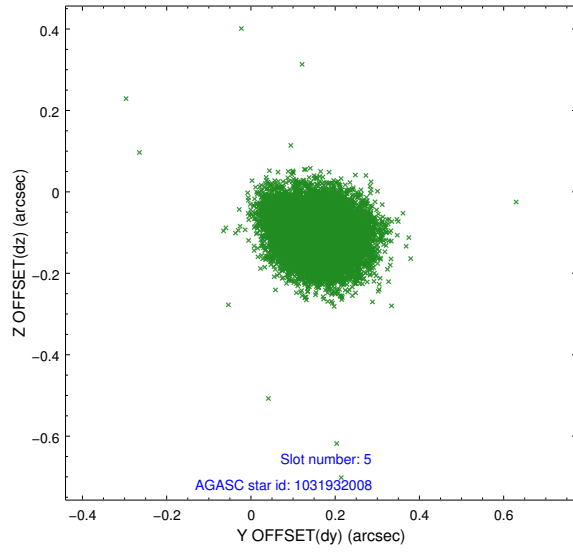
2.4.1 Slot 3



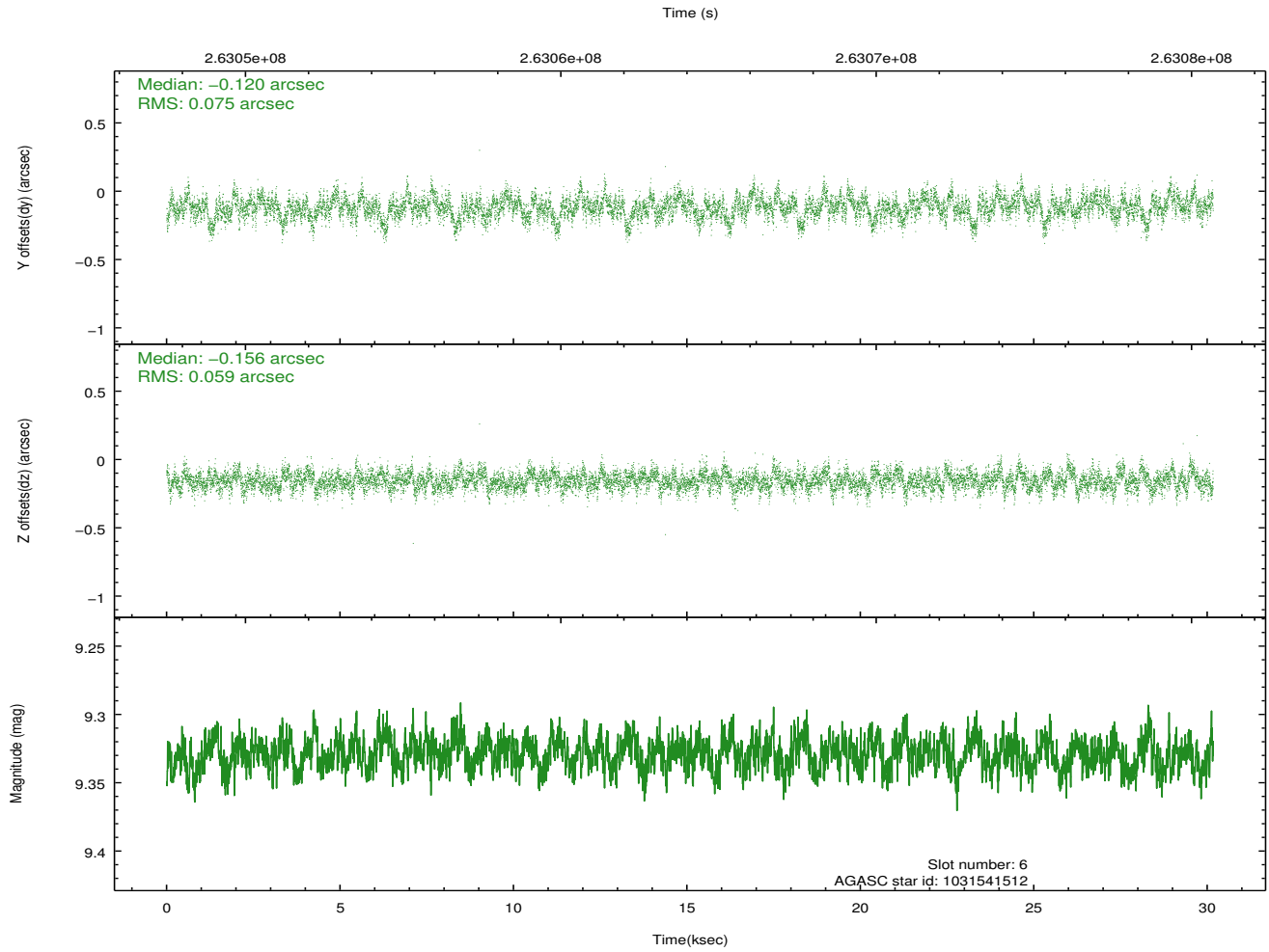
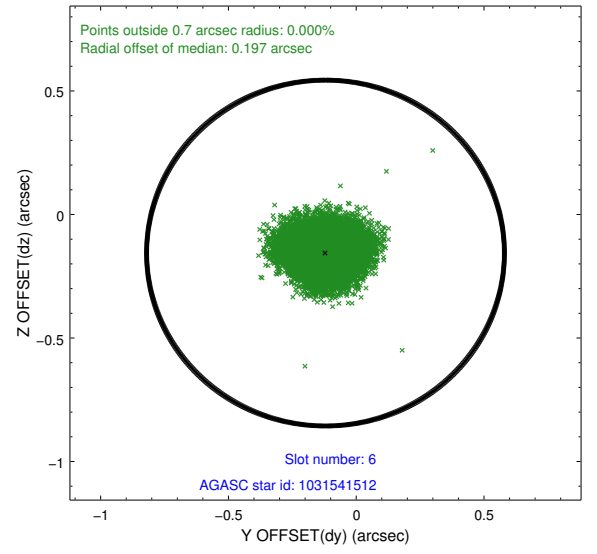
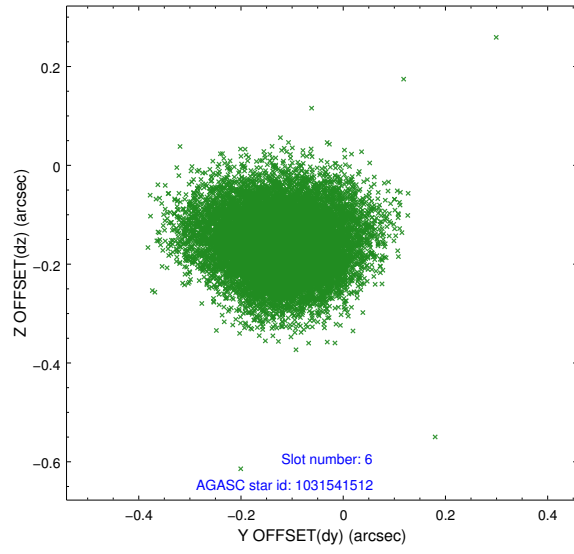
2.4.2 Slot 4



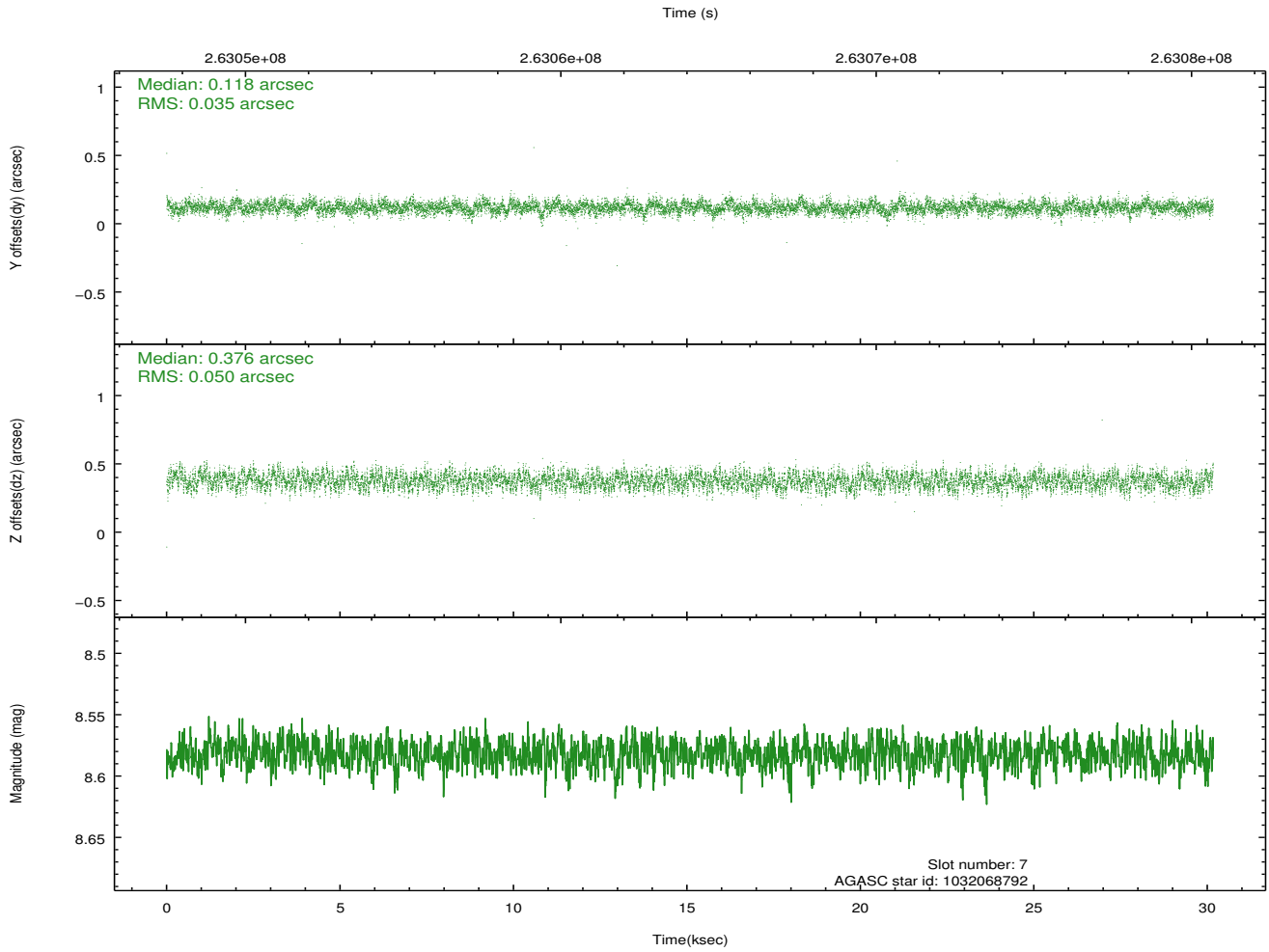
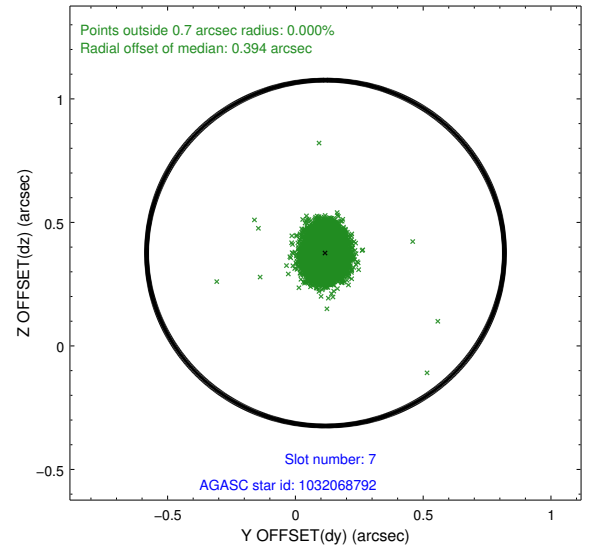
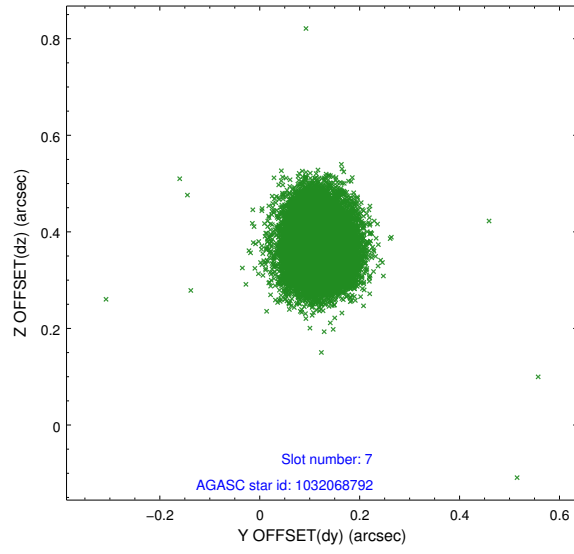
2.4.3 Slot 5



2.4.4 Slot 6

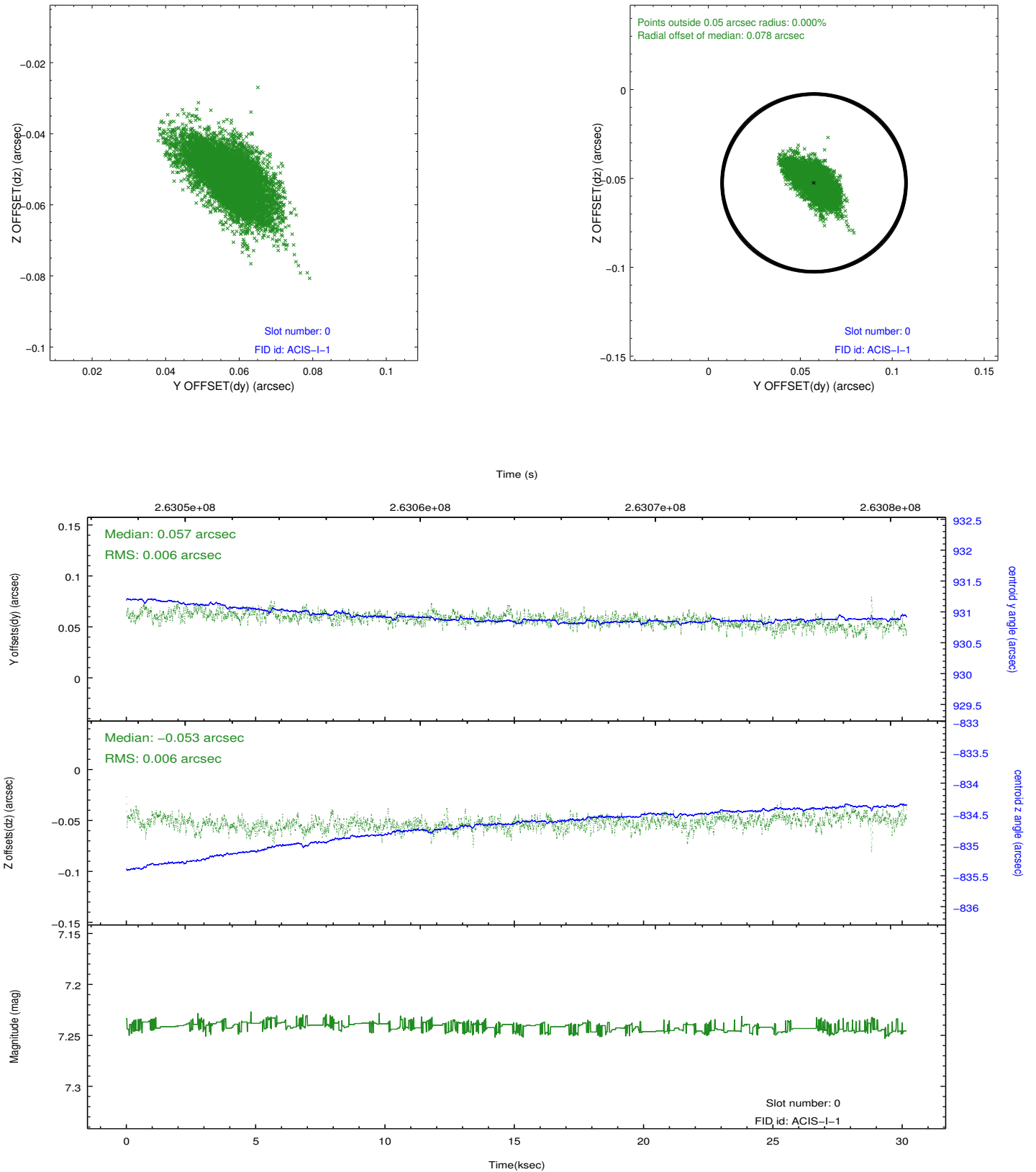


2.4.5 Slot 7

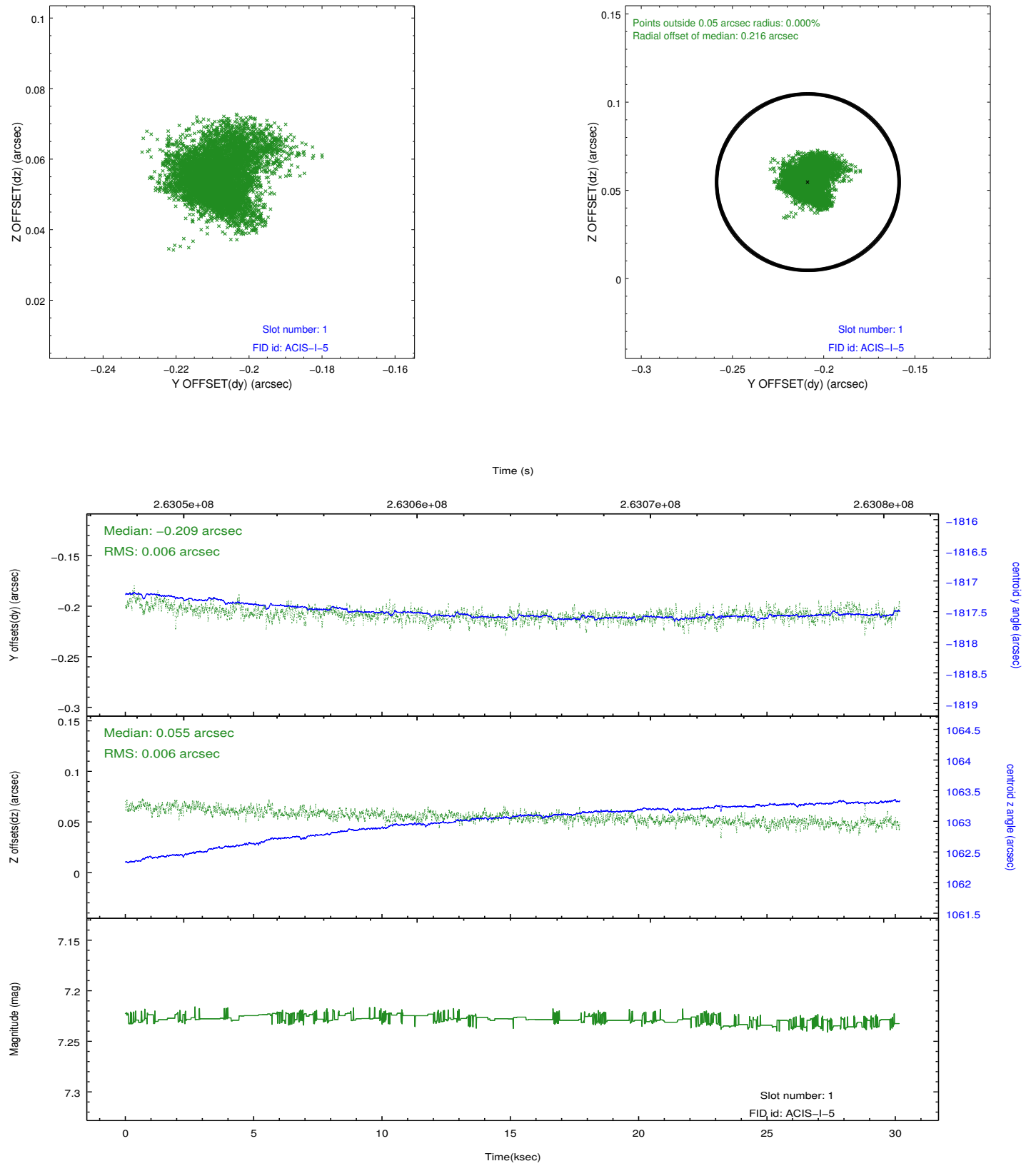


2.5 FID Slots

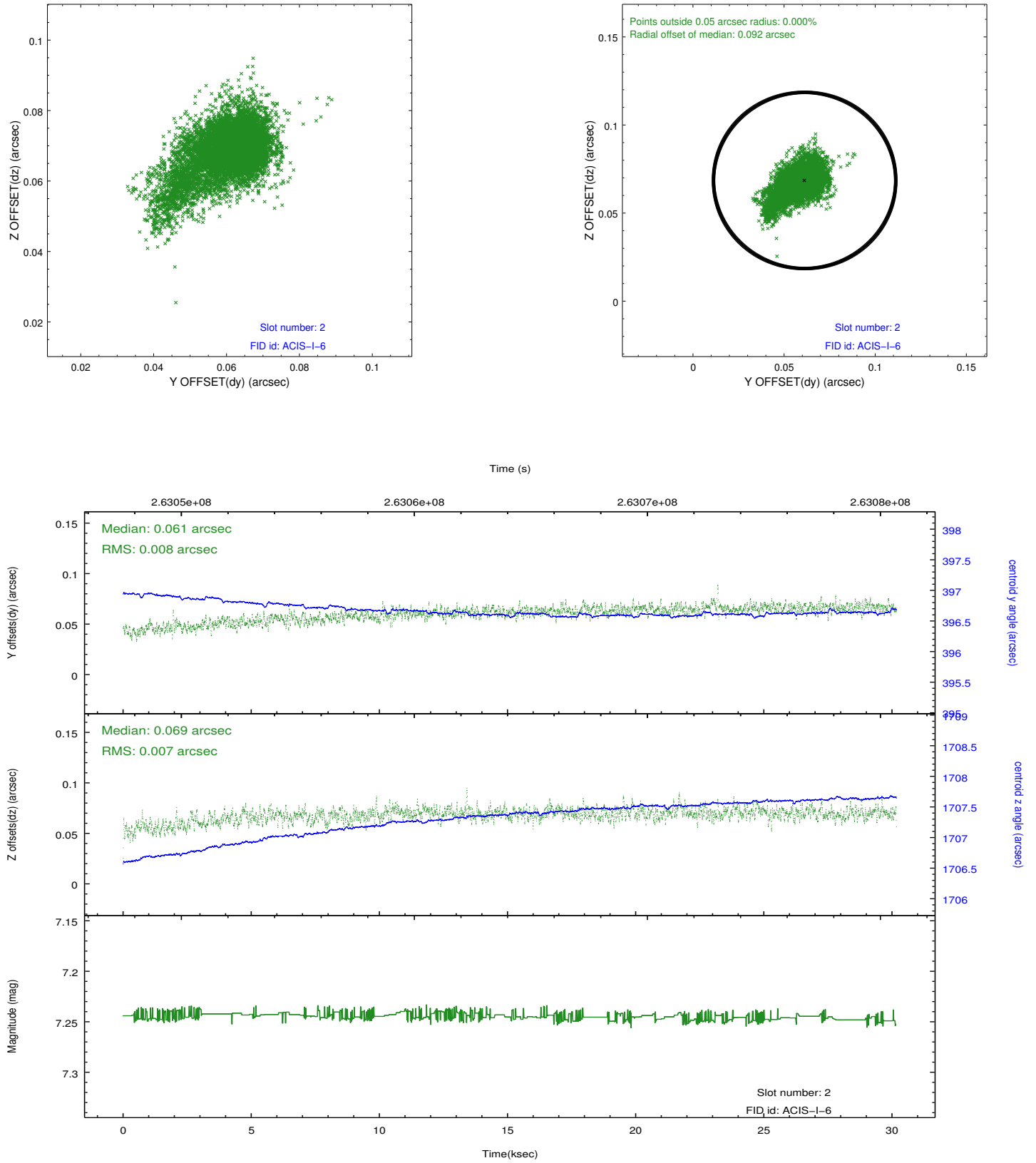
2.5.1 Slot 0



2.5.2 Slot 1



2.5.3 Slot 2



A Summary

A.1 Status

V&V Scientist	Jen Lauer
V&V Date (YYYY-MM-DD)	2012.04.02
V&V Edition	1
V&V Disposition and Status	OK
V&V Charge Time	30.1598589

A.2 Comments