

# V&V Reference Report

## L2 ASCDS Version : 7.6.9

Observation 62850 - L2 Version 001  
Chandra X-Ray Center

L2 Processing Date : Oct 2 2006

## Contents

<b>1</b>	<b>Front</b>	<b>2</b>
<b>2</b>	<b>OBI</b>	<b>3</b>
2.1	OBI . . . . .	3
2.1.1	Images . . . . .	3
2.1.2	Bias . . . . .	3
2.1.3	Parameters . . . . .	4
2.1.4	Events . . . . .	4
2.2	Compared Parameters . . . . .	5
2.3	Aspect . . . . .	6
2.4	Star Slots . . . . .	8
2.5	FID Slots . . . . .	8
<b>A</b>	<b>Summary</b>	<b>9</b>
A.1	Status . . . . .	9
A.2	Comments . . . . .	9

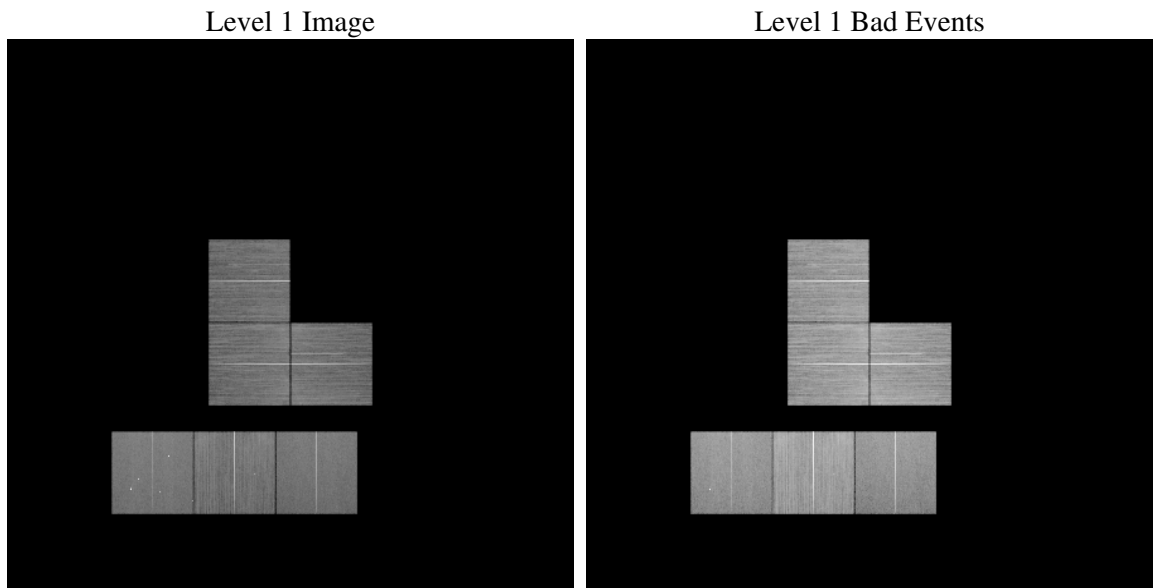
# 1 Front

seq_num	&#160
obs_id	62850
title	ACIS-023567 background measurement
observer	DR. MAXIM MARKEVITCH
object	&#160
dtcycle	0
cycle	P
ra_targ	0.0
dec_targ	0.0
ra_nom	283.62155948425
dec_nom	-38.01946892609
roll_nom	284.07927903327
revision	2
ontime	53164.799801946
livetime	52491.595094854
ontime0	53153.039678752
ontime2	53158.317971021
ontime3	53161.558831692
ontime5	53164.799801946
ontime6	53164.799801946
ontime7	53164.799801946
l2events	466677

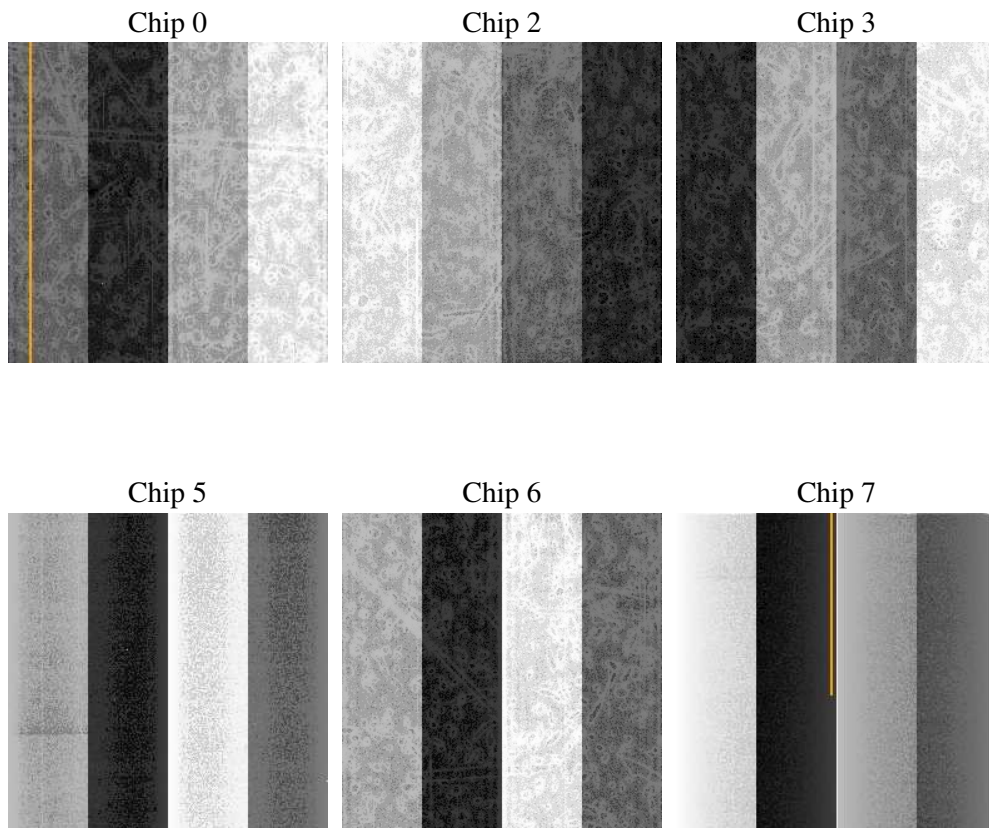
## 2 OBI

### 2.1 OBI

#### 2.1.1 Images



#### 2.1.2 Bias



### 2.1.3 Parameters

obi_num	0
ascdsver	7.6.9
caldbver	3.2.3
date	2006-10-03T01:19:45
revision	2

sched_exp_time	0.0
ontime	53168.663044721
ontime0	53155.699103922
ontime2	53162.181193858
ontime3	53165.422054529
ontime5	53168.663024783
ontime6	53168.663004875
ontime7	53168.663044721
l1events	2903239

### 2.1.4 Events

	ccd 0	ccd 2	ccd 3	ccd 5	ccd 6	ccd 7
level 1 events	449420	481284	471512	526184	500883	473956
rejected events	411622	446178	436265	323787	464398	315514
rejected %	91%	92%	92%	61%	92%	66%

	ccd 0	ccd 2	ccd 3	ccd 5	ccd 6	ccd 7
grade 0 events	15296	14786	14699	14135	13650	8085
	3%	3%	3%	2%	2%	1%
grade 1 events	187	153	195	383	137	263
	0%	0%	0%	0%	0%	0%
grade 2 events	8418	7348	7224	62732	7931	38973
	1%	1%	1%	11%	1%	8%
grade 3 events	3853	3519	3486	4911	3736	7968
	0%	0%	0%	0%	0%	1%
grade 4 events	3501	3467	3487	3950	3666	8068
	0%	0%	0%	0%	0%	1%
grade 5 events	12833	11869	13495	23031	14460	28802
	2%	2%	2%	4%	2%	6%
grade 6 events	6739	5990	6354	116682	7503	95354
	1%	1%	1%	22%	1%	20%
grade 7 events	398593	434152	422572	300360	449800	286443
	88%	90%	89%	57%	89%	60%

## 2.2 Compared Parameters

Parameter	Planned	Actual	Parameter	Planned	Actual
Instrument	ACIS	ACIS	Obspar format version number	6	6
Detector	ACIS-023567	ACIS-023567	Obspar file type	PREDICTED	ACTUAL
Grating	NONE	NONE	Obspar update status	NONE	UPDATED
Data mode	VFAINT	VFAINT	On-chip summing requested	N	N
Observation mode	SECONDARY	SECONDARY	Subarray requested	NONE	NONE
Pointing RA	0	283.6215594842508	Alternating exposures requested	N	N
Pointing Dec	0	-38.01946892608986	Primary exposure time	0.000000	3.2
Pointing Roll	0.0	284.0792790332706			
SIM focus pos (mm)	-0.684267	-1.038866356238299			
SIM defocus (mm)	0	0.001426264420575141			
SIM translation stage pos (mm)	-190.132523	51.9960404362608			
SIM translation stage offset (mm)	0	74.98944845534076			
Observation start time	147466471.964	147466470.93929			
Observation start date	2002-09-03T18:54:32	2002-09-03T18:54:30			
Observation end time	147521430.416	147521429.39156			
Observation end date	2002-09-04T10:10:30	2002-09-04T10:10:29			
Read mode	TIMED	TIMED			

## 2.3 Aspect



## 2.4 Star Slots

## 2.5 FID Slots



## A Summary

### A.1 Status

V&V Scientist	Jen Lauer
V&V Date (YYYY-MM-DD)	2006.10.03
V&V Edition	1
V&V Disposition and Status	OK
V&V Charge Time	53.1647998

### A.2 Comments