

V&V Reference Report

L2 ASCDS Version : 8.4.5

Observation 62810 - L2 Version 2
Chandra X-Ray Center

L2 Processing Date : Jun 16 2012

Contents

1	Front	2
2	OBI	3
2.1	OBI	3
2.1.1	Images	3
2.1.2	Bias	3
2.1.3	Parameters	4
2.1.4	Events	4
2.2	Compared Parameters	5
2.3	Star Slots	6
2.4	FID Slots	6
A	Summary	7
A.1	Status	7
A.2	Comments	7

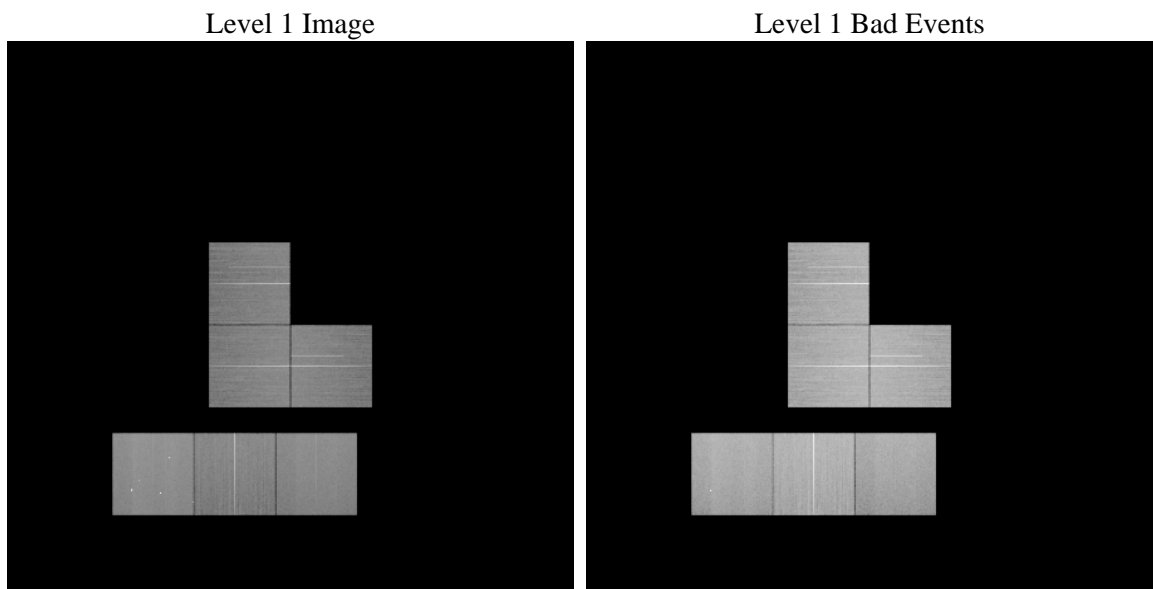
1 Front

seq_num	 	Sequence number
obs_id	62810	Observation id
title	ACIS-023567 diagnostics	Proposal title
observer	CHANDRA engineering request/realtime commanding	Principal investig
object	 	Source name
dtcycle	0	
cycle	P	events from which exps? Prim/Second/Both
ra_targ	0.0	Observer's specified target RA [deg]
dec_targ	0.0	Observer's specified target Dec [deg]
ra_nom	193.09124177639	Nominal RA [deg]
dec_nom	27.337064361527	Nominal Dec [deg]
roll_nom	33.894536072499	Nominal Roll [deg]
revision	2	Processing version of data
ontime	50499.199811935	Sum of GTIs [s]
livetime	49859.748536949	Livetime [s]
ontime0	50486.2359308	Sum of GTIs [s]
ontime2	50492.718010724	Sum of GTIs [s]
ontime3	50499.199811935	Sum of GTIs [s]
ontime5	50499.199811935	Sum of GTIs [s]
ontime6	50495.958821714	Sum of GTIs [s]
ontime7	50499.199811935	Sum of GTIs [s]
l2events	655693	Number of level 2 events

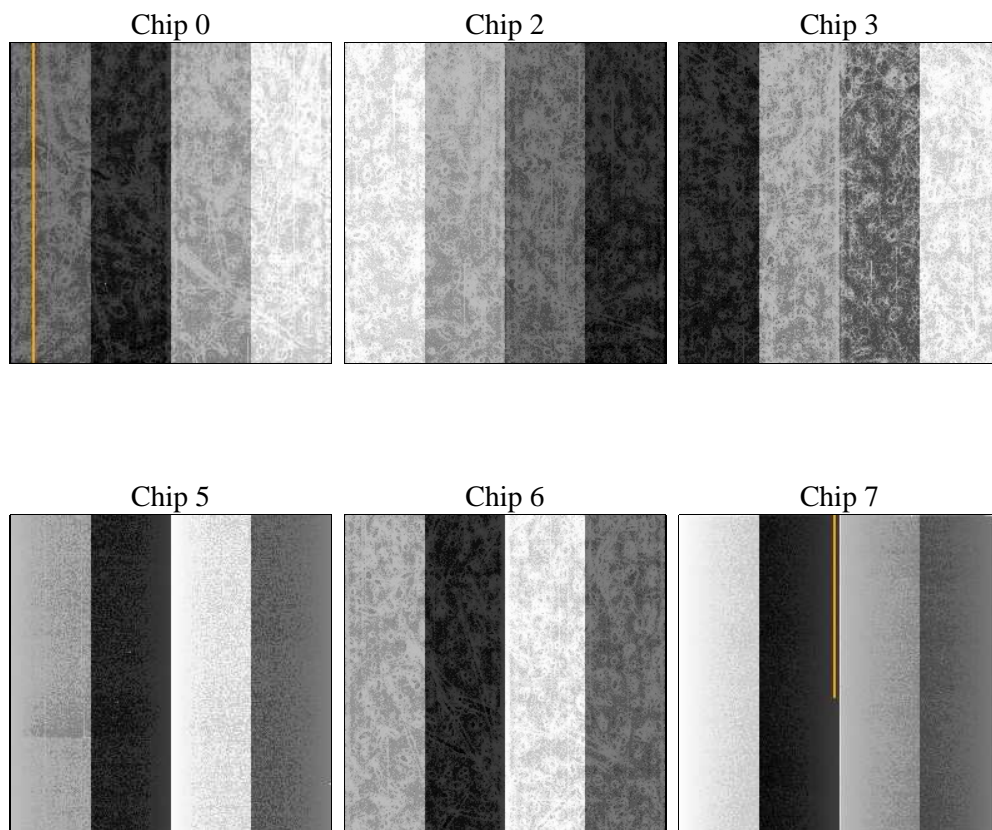
2 OBI

2.1 OBI

2.1.1 Images



2.1.2 Bias



2.1.3 Parameters

obi_num	0	Obi number	sched_exp_time	0.0	[s] Scheduled observation exposure time
ascdsver	8.4.5	Processing system revision	ontime	50499.199811935	Sum of GTIs [s]
caldsver	4.4.10	 	ontime0	50486.2359308	Sum of GTIs [s]
date	2012-06-16T03:46:50	Date and time of file creation	ontime2	50492.718010724	Sum of GTIs [s]
revision	2	Processing version of data	ontime3	50499.199811935	Sum of GTIs [s]
			ontime5	50499.199811935	Sum of GTIs [s]
			ontime6	50495.958821714	Sum of GTIs [s]
			ontime7	50499.199811935	Sum of GTIs [s]
			l1events	2882145	Number of level 1 events

2.1.4 Events

	ccd 0	ccd 2	ccd 3	ccd 5	ccd 6	ccd 7		ccd 0	ccd 2	ccd 3	ccd 5	ccd 6	ccd 7
level 1 events	406483	447587	437073	632548	455951	502503	grade 0 events	14515	14454	13535	31440	15209	20726
rejected events	363024	405715	396878	316519	410559	275541		3%	3%	3%	4%	3%	4%
rejected %	89%	90%	90%	50%	90%	54%	grade 1 events	275	248	258	1256	269	690
								0%	0%	0%	0%	0%	0%
							grade 2 events	10894	10343	9135	96578	10423	46269
								2%	2%	2%	15%	2%	9%
							grade 3 events	4875	4447	4678	12534	4881	20702
								1%	0%	1%	1%	1%	4%
							grade 4 events	4539	4560	4605	11802	4722	20096
								1%	1%	1%	1%	1%	3%
							grade 5 events	15693	14823	18148	48386	18924	53058
								3%	3%	4%	7%	4%	10%
							grade 6 events	8675	8124	8305	164060	10222	119456
								2%	1%	1%	25%	2%	23%
							grade 7 events	347017	390588	378409	266492	391301	221506
								85%	87%	86%	42%	85%	44%

2.2 Compared Parameters

Parameter	Planned	Actual	Parameter	Planned	Actual
Instrument	ACIS	ACIS	Obspar format version number	7	7
Detector	ACIS-023567	ACIS-023567	Obspar file type	PREDICTED	ACTUAL
Grating	NONE	NONE	Obspar update status	NONE	UPDATED
Data mode	VFAINT	VFAINT	Number of optional ACIS chips dropped	0	0
Observation mode	SECONDARY	SECONDARY	On-chip summing requested	N	N
[deg] Pointing RA	0	193.091241776388	Subarray requested	NONE	NONE
[deg] Pointing Dec	0	27.33706436152654	Alternating exposures requested	N	N
[deg] Pointing Roll	0.0	33.89453607249893	[s] Primary exposure time	3.2	3.2
[mm] SIM focus pos	-1.429586	-1.038866356238299			
[mm] SIM defocus	0.1037507710433287	0.001426264420575141			
[mm] SIM translation stage pos	250.455976	51.9960404362608			
[mm] SIM translation stage offset	0	74.98944845534076			
[s] Observation start time (MET)	373700437.047336	373700436.02234			
Observation start date	2009-11-04T05:40:37	2009-11-04T05:40:36			
[s] Observation end time (MET)	373752849.399976	373752848.37498			
Observation end date	2009-11-04T20:14:09	2009-11-04T20:14:08			
Read mode	TIMED	TIMED			

2.3 Star Slots

2.4 FID Slots

A Summary

A.1 Status

V&V Scientist	Beth Sundheim
V&V Date (YYYY-MM-DD)	2012.06.20
V&V Edition	1
V&V Disposition and Status	OK
V&V Charge Time	50.499199811935

A.2 Comments