

V&V Reference Report

L2 ASCDS Version : 8.1.2

Observation 62550 - L2 Version 4
Chandra X-Ray Center

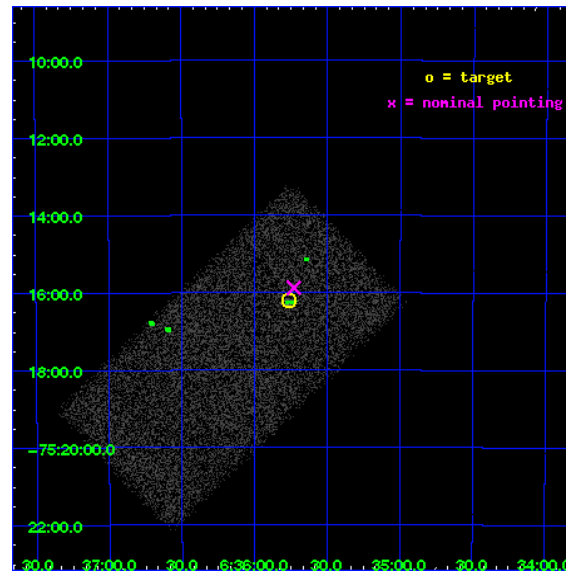
L2 Processing Date : Dec 14 2009

Contents

1	Front	2
2	OBI	3
2.1	OBI	3
2.1.1	Images	3
2.1.2	Bias	3
2.1.3	Parameters	4
2.1.4	Events	4
2.2	Compared Parameters	5
2.3	Aspect	6
2.4	Star Slots	9
2.4.1	Slot 3	9
2.4.2	Slot 4	10
2.4.3	Slot 5	11
2.4.4	Slot 6	12
2.4.5	Slot 7	13
2.5	FID Slots	14
2.5.1	Slot 0	14
2.5.2	Slot 1	15
2.5.3	Slot 2	16
3	Point Sources	17
A	Summary	18
A.1	Status	18
A.2	Comments	18

1 Front

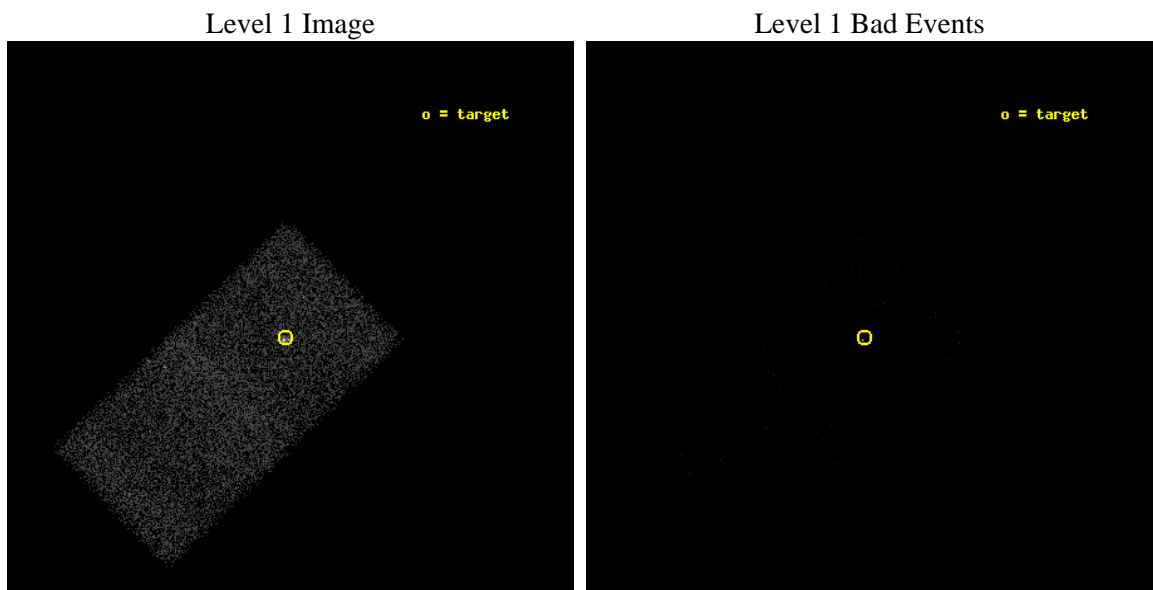
seq_num	780213	Sequence number
obs_id	62550	Observation id
title	ACIS Focus Test	Proposal title
observer	Dr. CXC Calibration	Principal investigator
object	PKS0637-752	Source name
dtcycle	0	
cycle	P	events from which exps? Prim/Second/Both
ra_targ	98.94	Observer's specified target RA
dec_targ	-75.27	Observer's specified target Dec
ra_nom	98.932606832131	Nominal RA
dec_nom	-75.264676990536	Nominal Dec
roll_nom	136.05508695648	Nominal Roll
revision	4	Processing version of data
ontime	5341.4765047505	Sum of GTIs [s]
livetime	5199.2256898755	Livetime [s]
ontime7	5341.4765047505	Sum of GTIs [s]
l2events	23011	Number of level 2 events



2 OBI

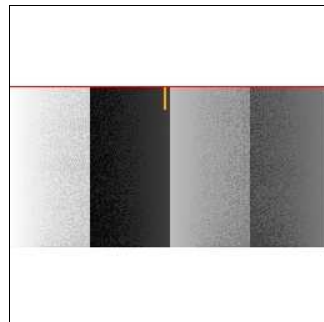
2.1 OBI

2.1.1 Images



2.1.2 Bias

Chip 7



2.1.3 Parameters

obi_num	1	Obi number	sched_exp_time	5000.000000	Scheduled observation exposure time
ascdsver	8.1.2	ASCDS version number	ontime	5341.4765047505	Sum of GTIs [s]
caldbver	4.1.4	 	ontime7	5341.4765047505	Sum of GTIs [s]
date	2009-12-14T05:57:28	Date and time of file creation	l1events	27634	Number of level 1 events
revision	4	Processing version of data			

2.1.4 Events

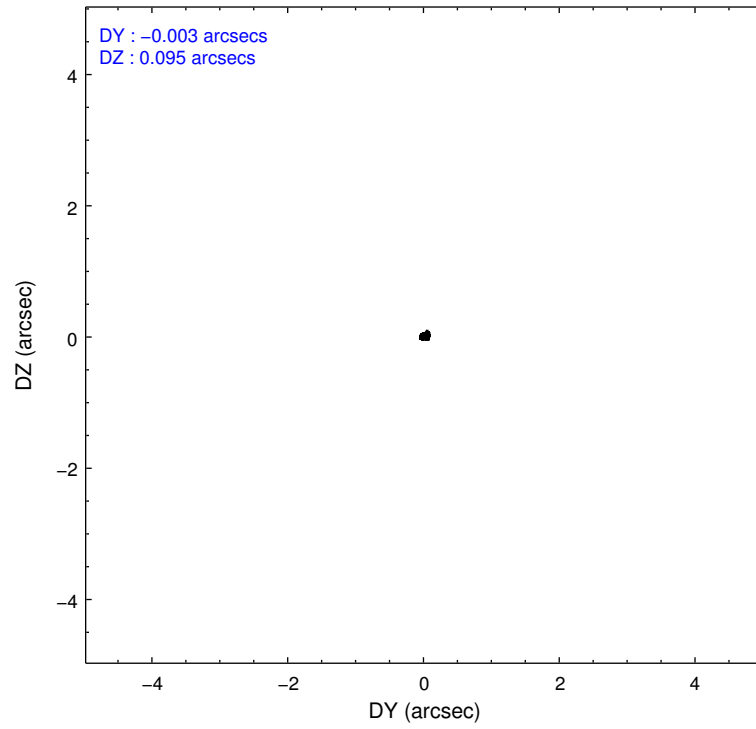
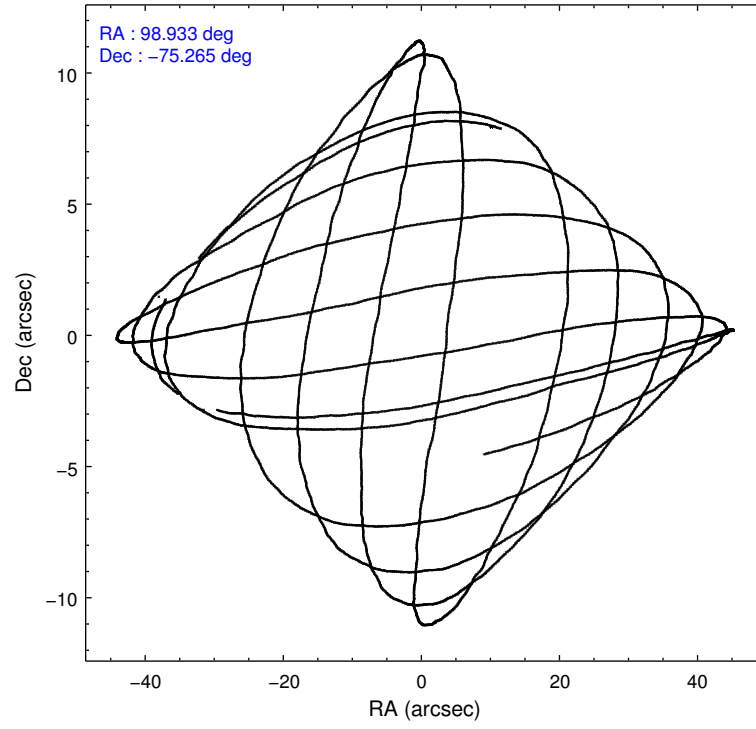
	ccd 7
level 1 events	27634
rejected events	3958
rejected %	14%

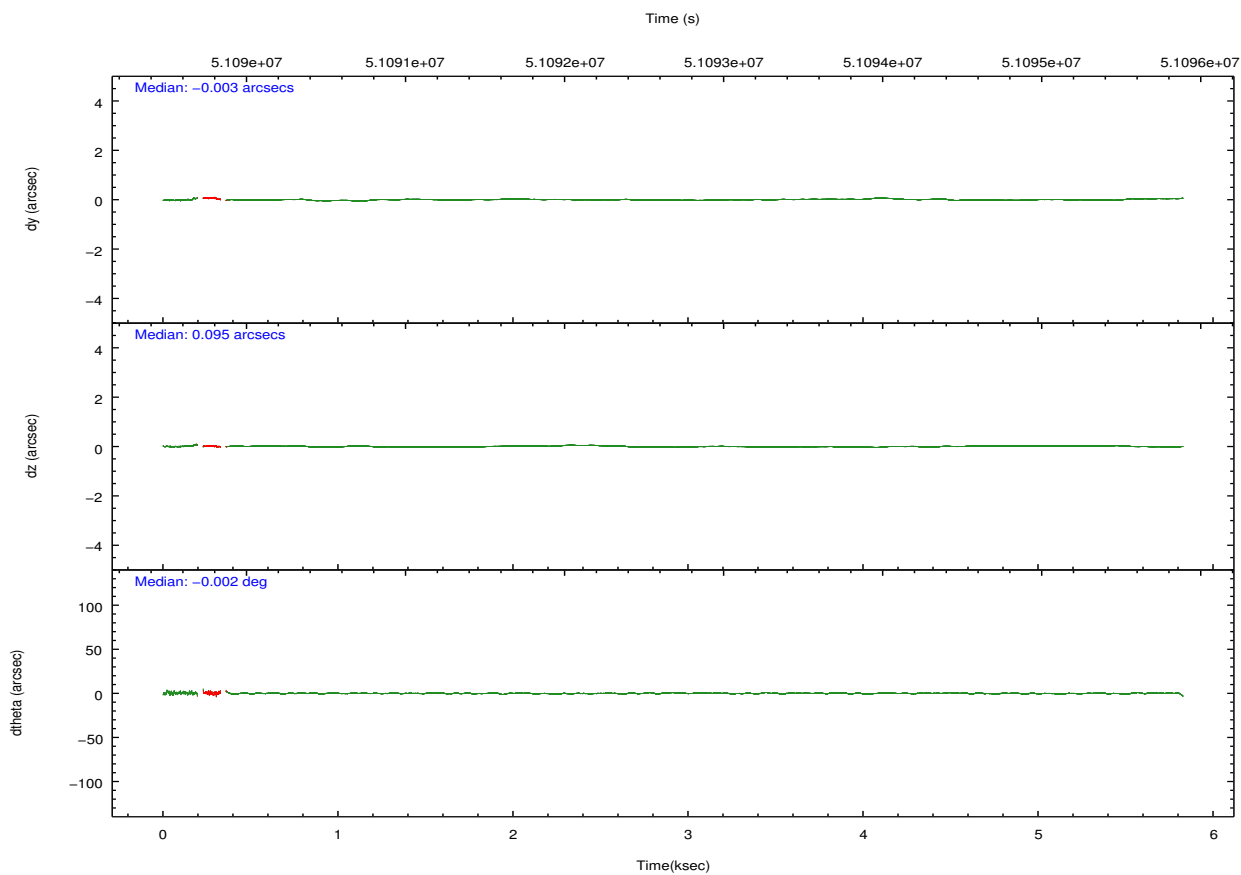
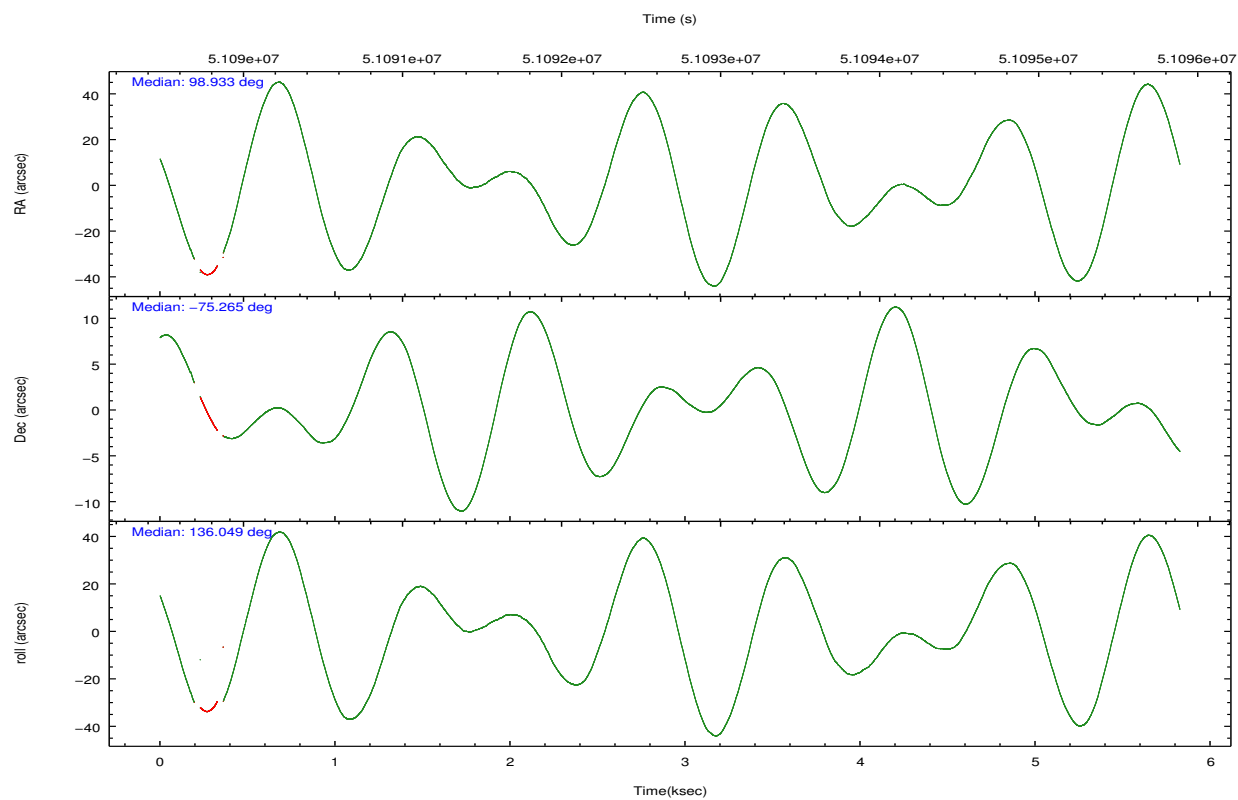
	ccd 7
grade 0 events	1581
	5%
grade 1 events	49
	0%
grade 2 events	3088
	11%
grade 3 events	2151
	7%
grade 4 events	1711
	6%
grade 5 events	3899
	14%
grade 6 events	15155
	54%
grade 7 events	0
	0%

2.2 Compared Parameters

Parameter	Planned	Actual	Parameter	Planned	Actual
Instrument	ACIS	ACIS	Obspar format version number	6	6
Detector	ACIS-7	ACIS-7	Obspar file type	PREDICTED	ACTUAL
Grating	NONE	NONE	Obspar update status	NONE	UPDATED
Data mode	FAINT	FAINT	Number of optional ACIS chips dropped	0	0
Observation mode	POINTING	POINTING	On-chip summing requested	N	N
Pointing RA	98.940005	98.93260683213052	Subarray requested	CUSTOM	1/2
Pointing Dec	-75.269988	-75.26467699053597	Subarray start row	256	256
Pointing Roll	136.148477	136.0550869564784	Subarray row count	512	512
SIM focus pos (mm)	-1.484267	-0.5394051798653029	Alternating exposures requested	N	N
SIM defocus (mm)	-0.8	0.1448622814345933	Primary exposure time	0.000000	1.5
SIM translation stage pos (mm)	-190.132523	-190.1325231039672			
SIM translation stage offset (mm)	0	5.209593894051068e-07			
Observation start time	51091661.184000	51089768.539535			
Observation start date	1999-08-15T08:06:37	1999-08-15T07:36:08			
Observation end time	51096661.184000	51095596.689741			
Observation end date	1999-08-15T09:29:57	1999-08-15T09:13:16			
Read mode	TIMED	TIMED			

2.3 Aspect



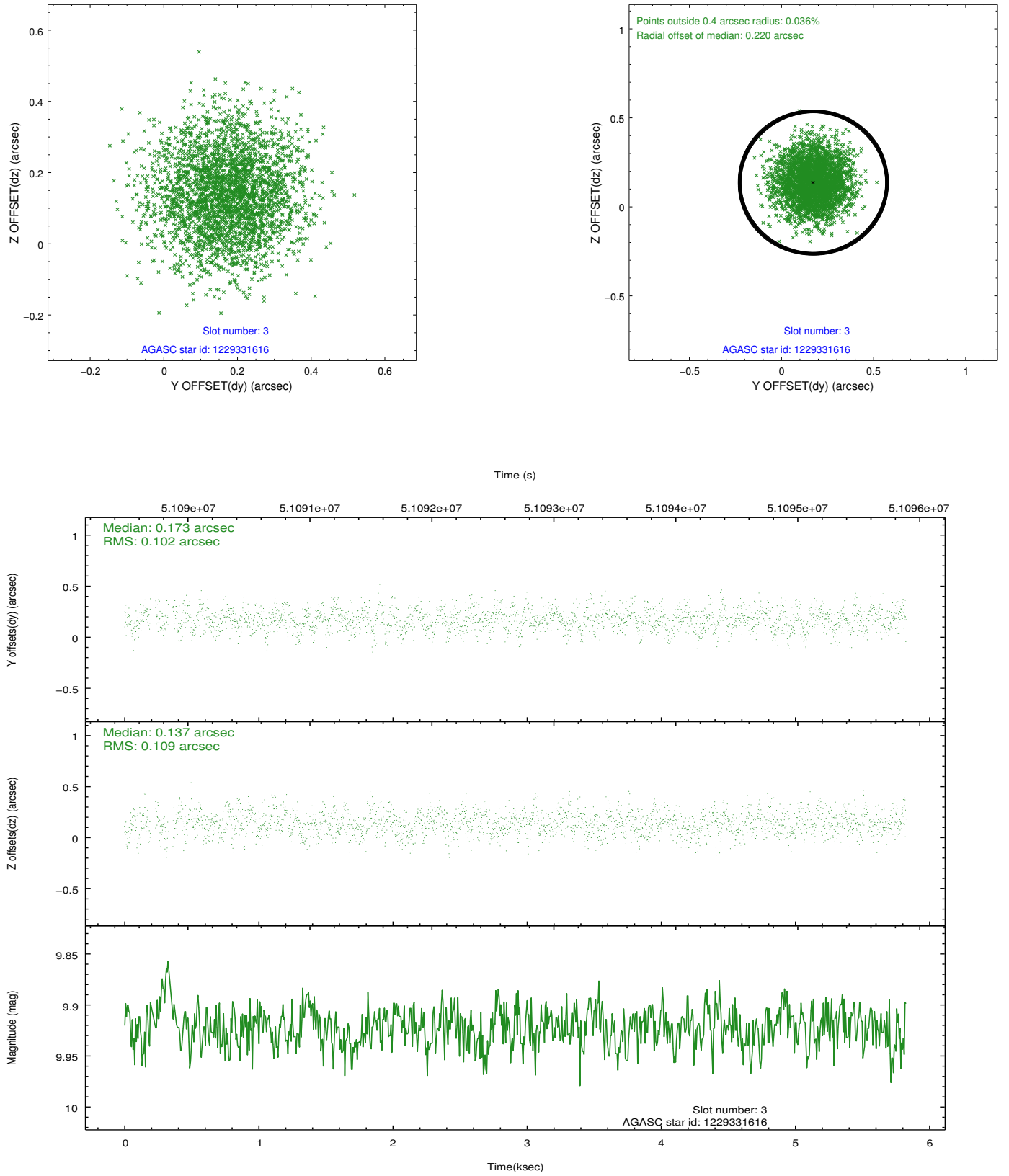


Slot Statistics

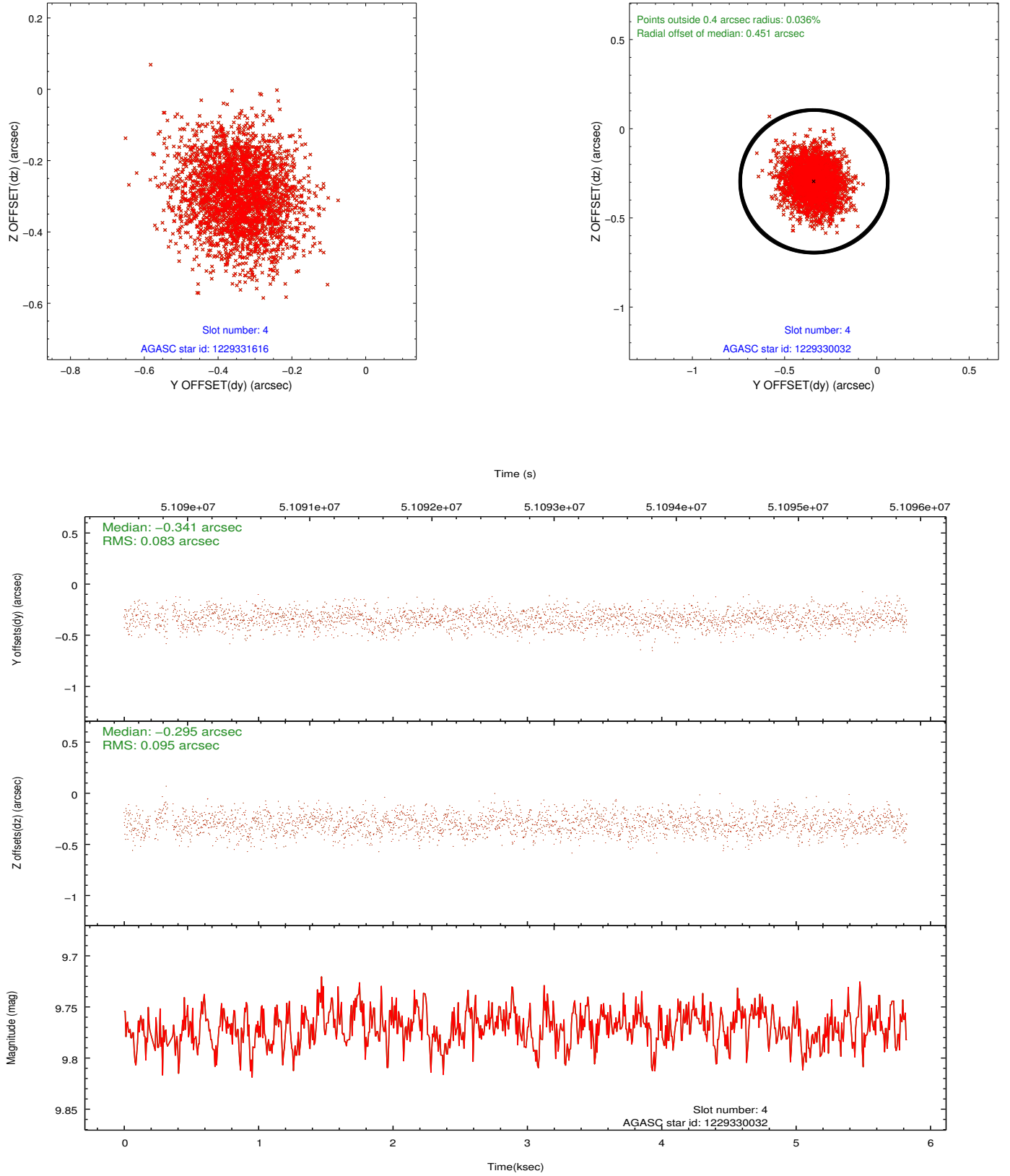
slot	status	id	mag	n_pts	med_dy	med_dz	dr1	dr2	ra	dec	mean_y	mean_z
0	FID	ACIS-S-2	7.14	2811	-0.054	-0.151	0.005	0.011	0.000000	0.000000	-752.66	-1721.29
1	FID	ACIS-S-3	7.13	2811	-0.065	-0.050	0.006	0.012	0.000000	0.000000	60.23	-1850.90
2	FID	ACIS-S-4	7.22	2811	0.149	0.049	0.004	0.012	0.000000	0.000000	2160.90	186.71
3	GUIDE	1229331616	9.92	2811	0.173	0.137	0.161	0.252	96.182998	-75.347362	1637.31	2046.42
4	BAD	1229330032	9.77	2810	-0.341	-0.295	0.134	0.220	98.721356	-75.139571	541.51	-137.82
5	GUIDE	1204423736	8.76	2809	0.268	0.103	0.079	0.129	99.272017	-74.796122	1031.24	-1384.86
6	BAD	1229457576	9.38	2811	-0.365	-0.083	0.127	0.199	100.335360	-75.489746	-1394.75	-239.72
7	GUIDE	1229457032	9.21	2806	0.264	0.135	0.109	0.174	100.958417	-75.581890	-2032.84	-372.72

2.4 Star Slots

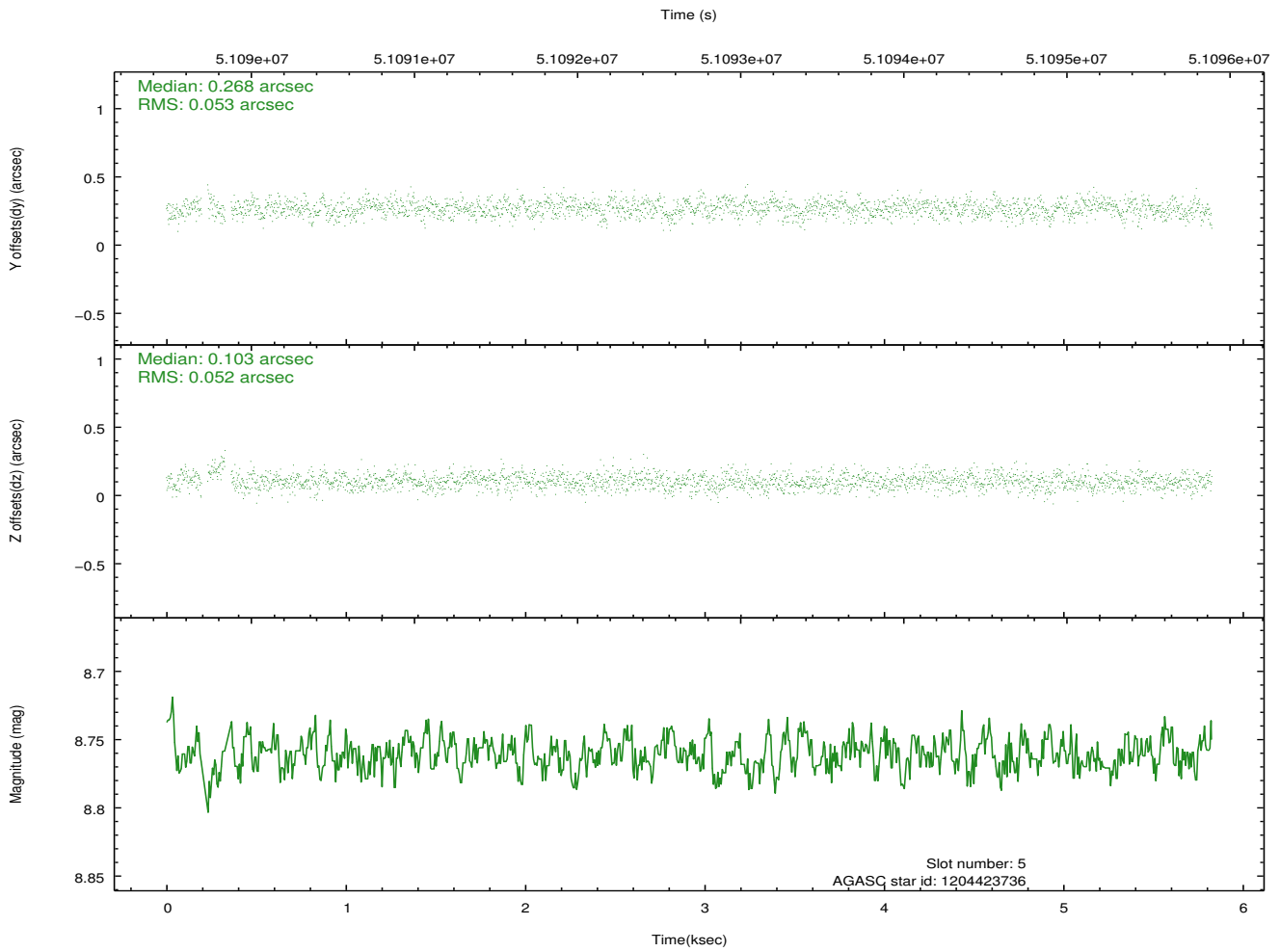
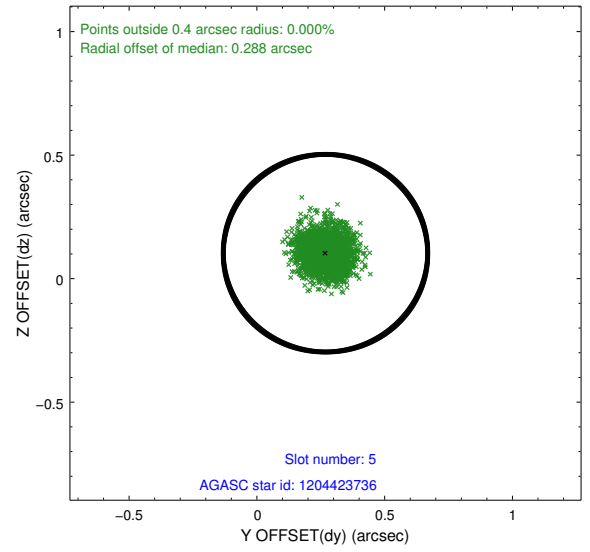
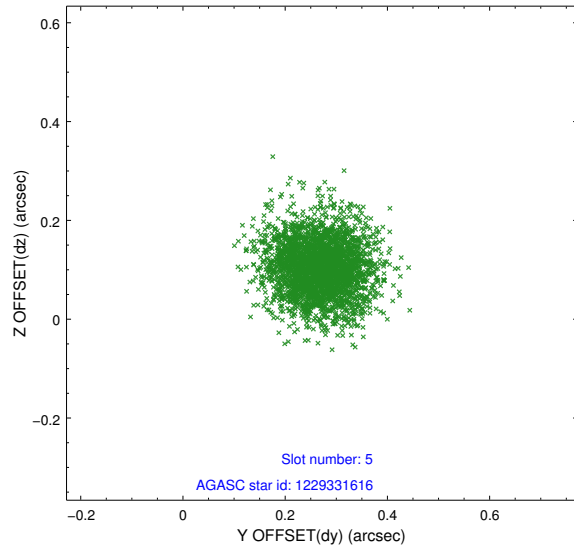
2.4.1 Slot 3



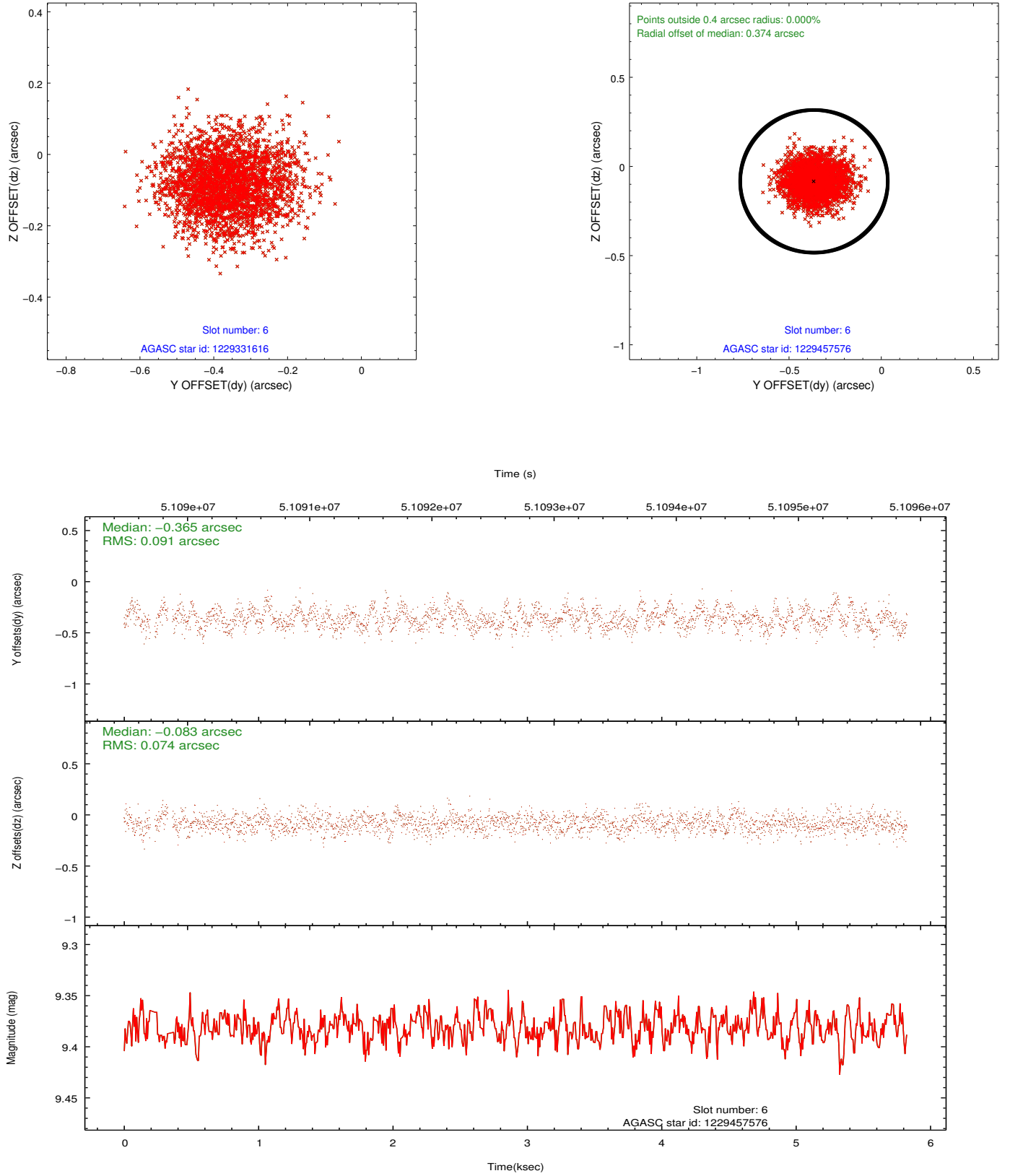
2.4.2 Slot 4



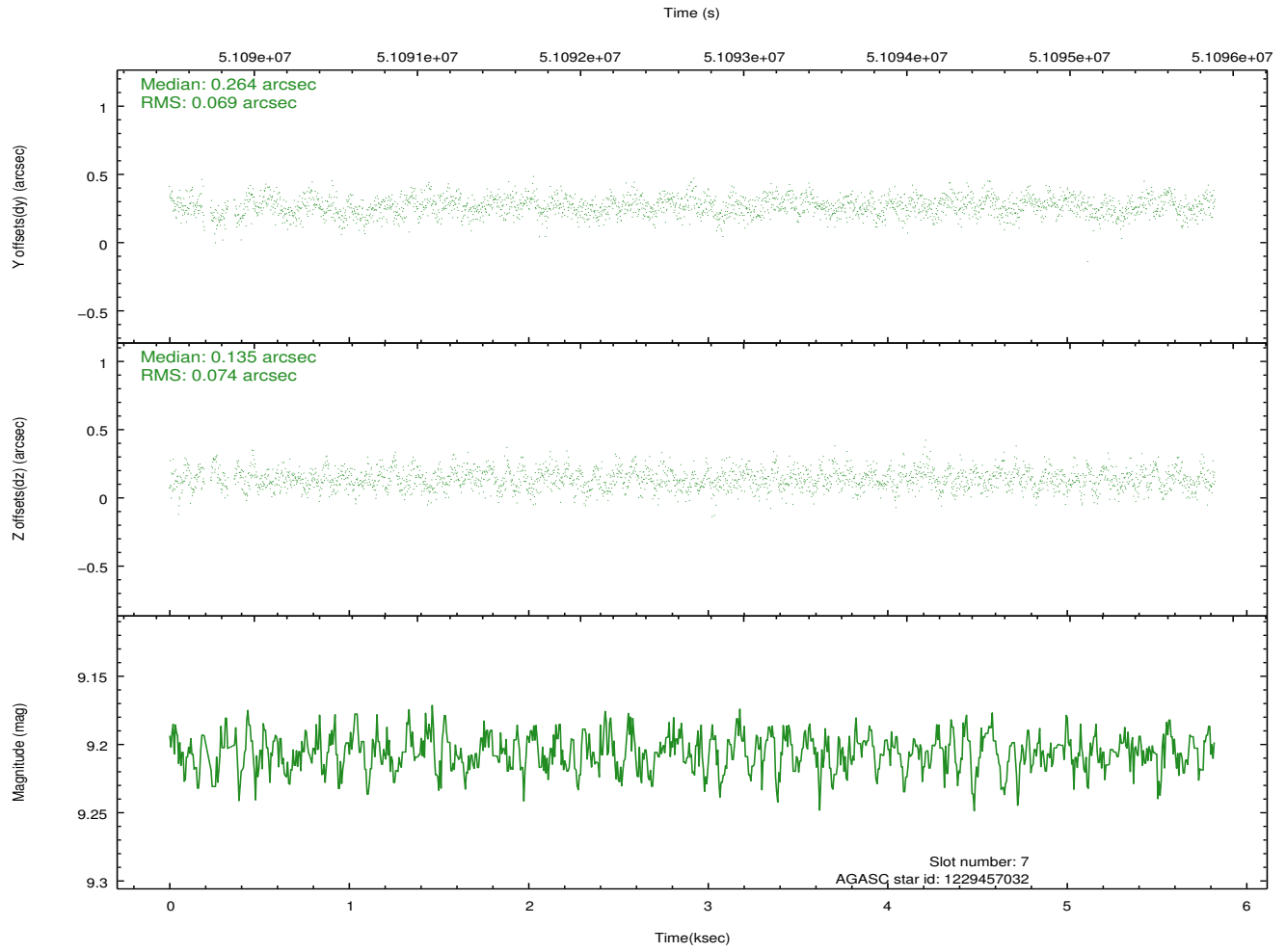
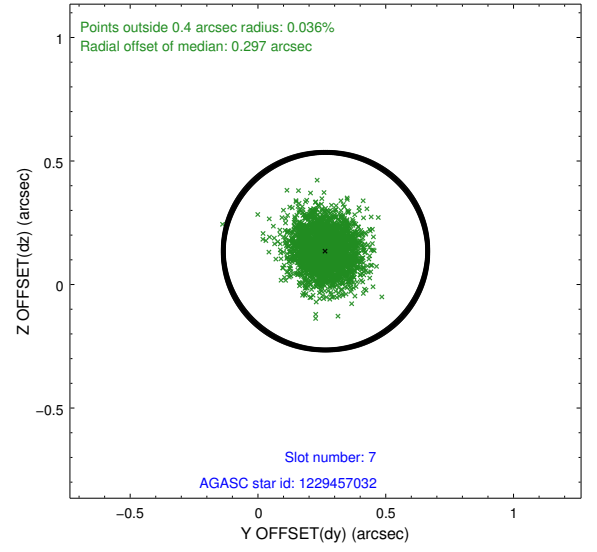
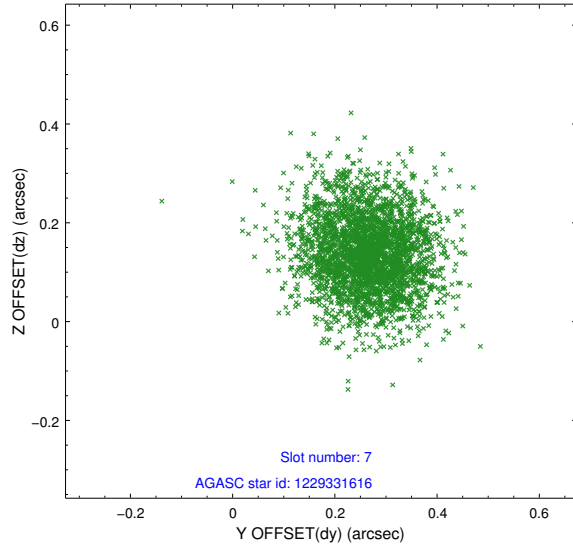
2.4.3 Slot 5



2.4.4 Slot 6

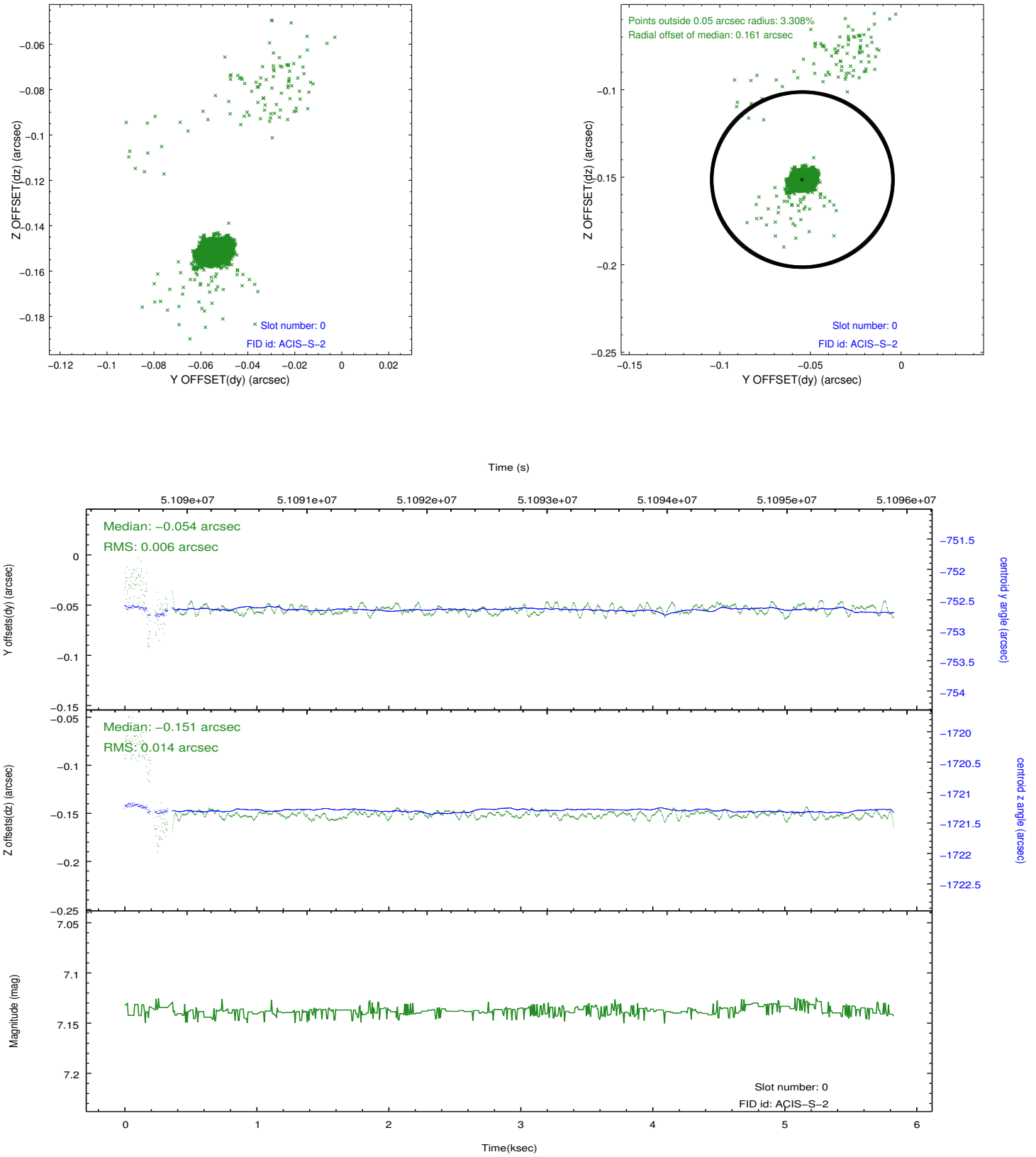


2.4.5 Slot 7

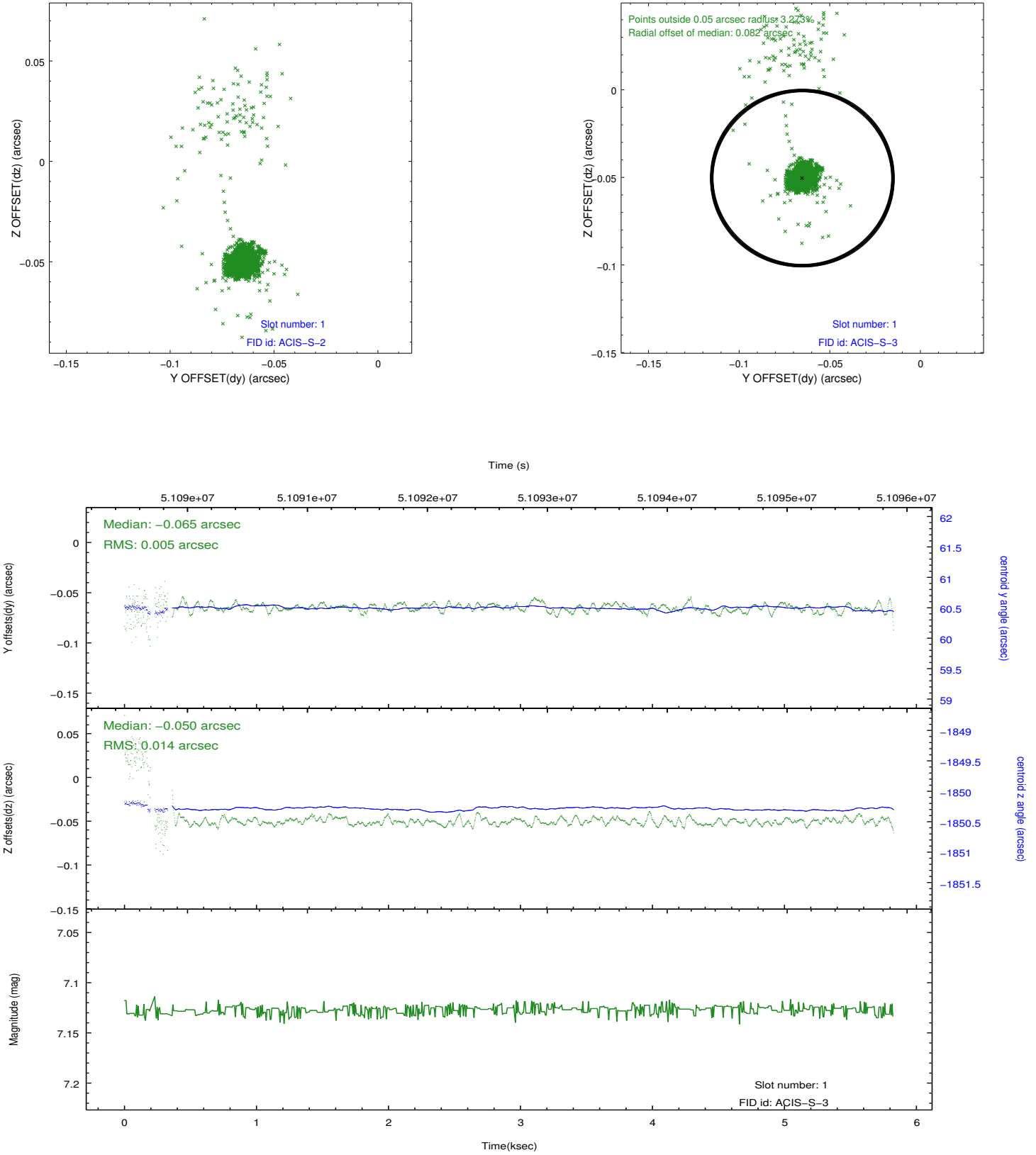


2.5 FID Slots

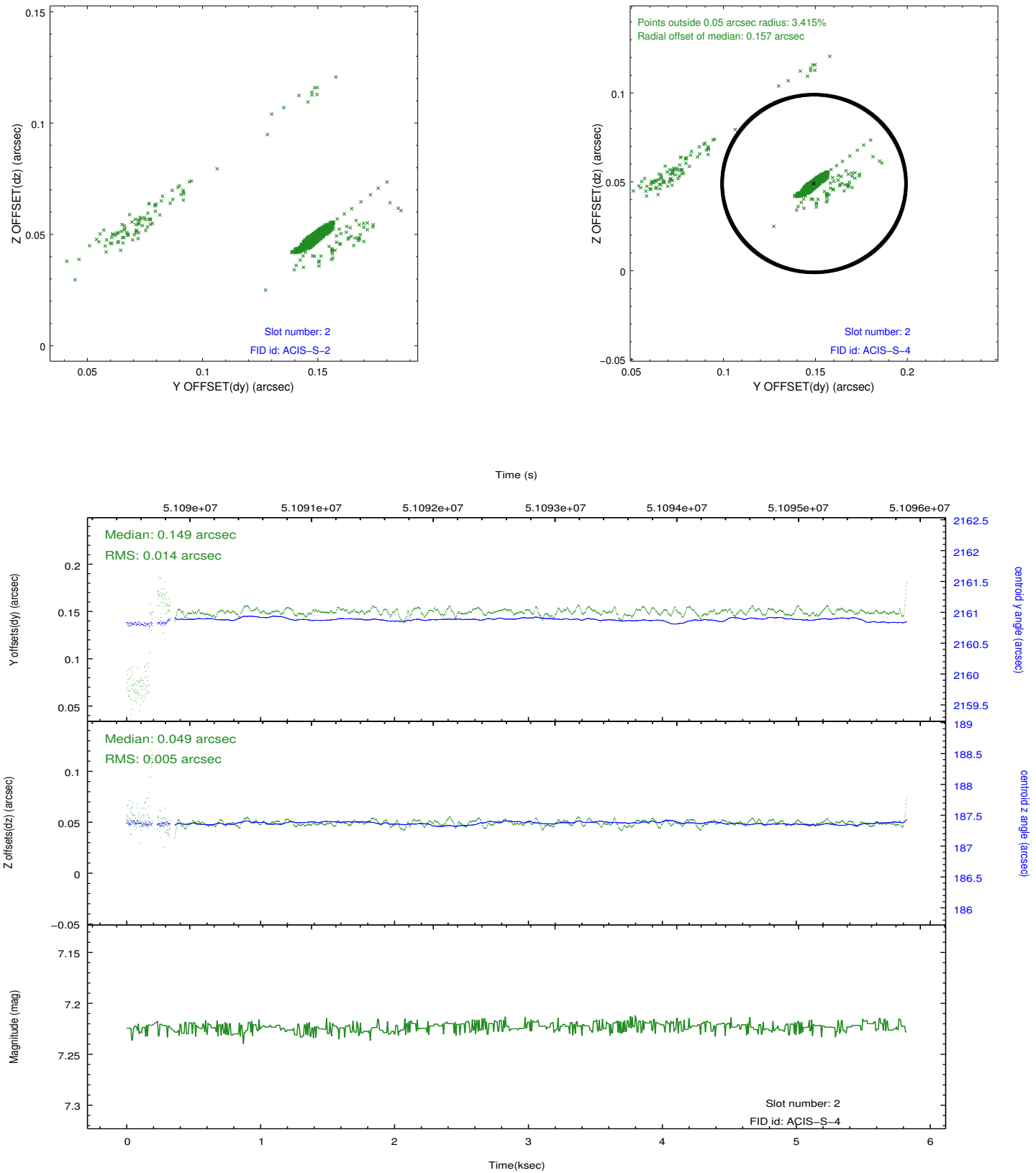
2.5.1 Slot 0



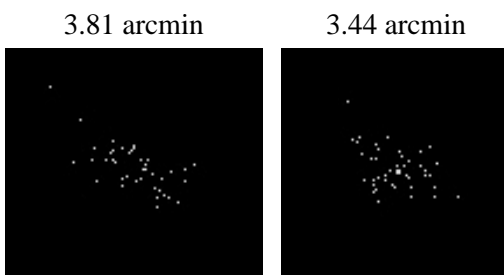
2.5.2 Slot 1



2.5.3 Slot 2



3 Point Sources



A Summary

A.1 Status

V&V Scientist	Joy Nichols
V&V Date (YYYY-MM-DD)	2010.08.16
V&V Edition	2
V&V Disposition and Status	OK
V&V Charge Time	5.341

A.2 Comments

ACIS focus and plate scale measurement. Moved SIM to -0.8 mm from nominal focus.

===

The guide stars in slots 4 and 6 were excluded from the aspect solution due to poor data quality. The aspect solution is not expected to be degraded by removing these stars from the solution.

===

The focal plane temperature is approximately -100 C during this observation. This reprocessing of the data applies no CTI correction because none is available for this temperature at present.

The ACIS CTI correction has not been calibrated at this temperature, because it was early in the mission, and ACIS had not yet been lowered to the standard -119.7 C. Both front and back illuminated chips are affected. However a T_GAIN correction has been applied to the BI chips (ACIS-5 and ACIS-7) data included here.

The ACIS spectral response calibration is less accurate at these warmer temperatures than it is at -119.7 C. Users whose science objectives depend on the most accurate spectral response (ie: fitting line-rich spectra) may notice an effect. Users whose science objectives do not depend on the most accurate spectral response should not notice an effect.