

V&V Reference Report

L2 ASCDS Version : 7.6.7

Observation 6250 - L2 Version 002
Chandra X-Ray Center

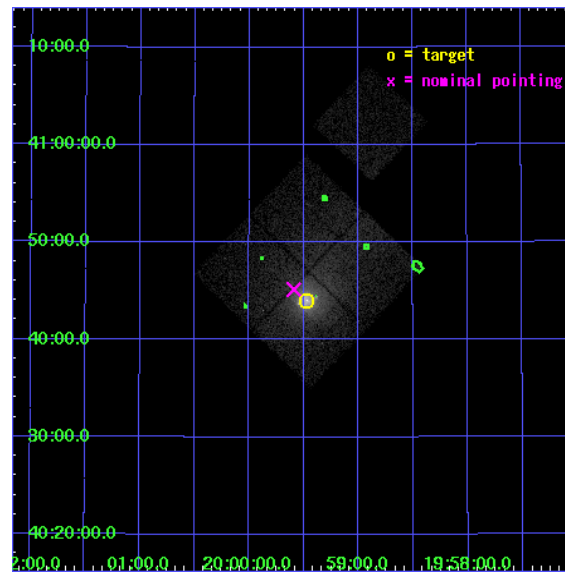
L2 Processing Date: Feb 23 2006

Contents

1	Front	2
2	OBI	3
2.1	OBI	3
2.1.1	Images	3
2.1.2	Bias	3
2.1.3	Parameters	4
2.1.4	Events	4
2.2	Compared Parameters	5
2.3	Aspect	6
2.4	Star Slots	9
2.4.1	Slot 3	9
2.4.2	Slot 4	10
2.4.3	Slot 5	11
2.4.4	Slot 6	12
2.4.5	Slot 7	13
2.5	FID Slots	14
2.5.1	Slot 0	14
2.5.2	Slot 1	15
2.5.3	Slot 2	16
3	Point Sources	17
A	Summary	18
A.1	Status	18
A.2	Comments	18

1 Front

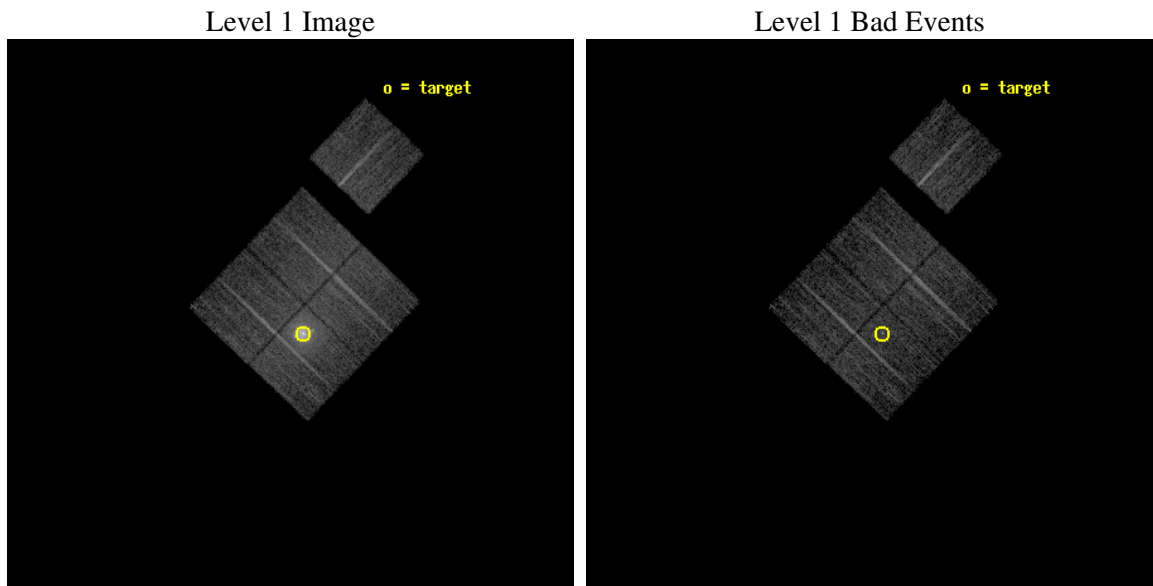
seq_num	800540
obs_id	6250
title	Cygnus A --- Shock Heating of the Intra-Cluster Medium
observer	Dr Andrew Young
object	Cygnus A
dtcycle	0
cycle	P
ra_targ	299.867917
dec_targ	40.733889
ra_nom	299.89752182196
dec_nom	40.752705431769
roll_nom	43.689383369712
revision	2
ontime	7049.3589963019
livetime	6957.2539313526
ontime0	7052.4999864399
ontime1	7049.3589963019
ontime2	7052.4999864399
ontime3	7049.3590261936
ontime6	7052.4999864399
l2events	64451



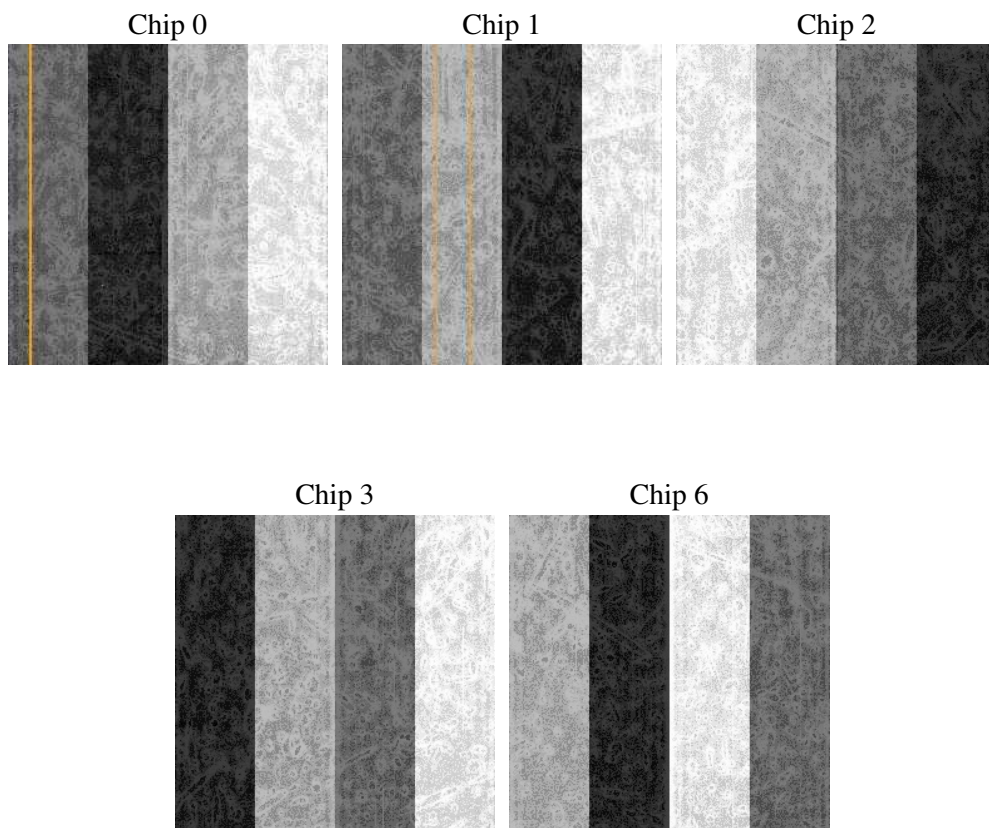
2 OBI

2.1 OBI

2.1.1 Images



2.1.2 Bias



2.1.3 Parameters

obi_num	0
ascdsver	7.6.7
caldbver	3.2.1
date	2006-02-24T00:56:49
revision	2

sched_exp_time	7000.000000
ontime	7054.6907896399
ontime0	7057.831779778
ontime1	7054.6907896399
ontime2	7057.831799686
ontime3	7054.6908394396
ontime6	7057.831799686
llevents	252334

2.1.4 Events

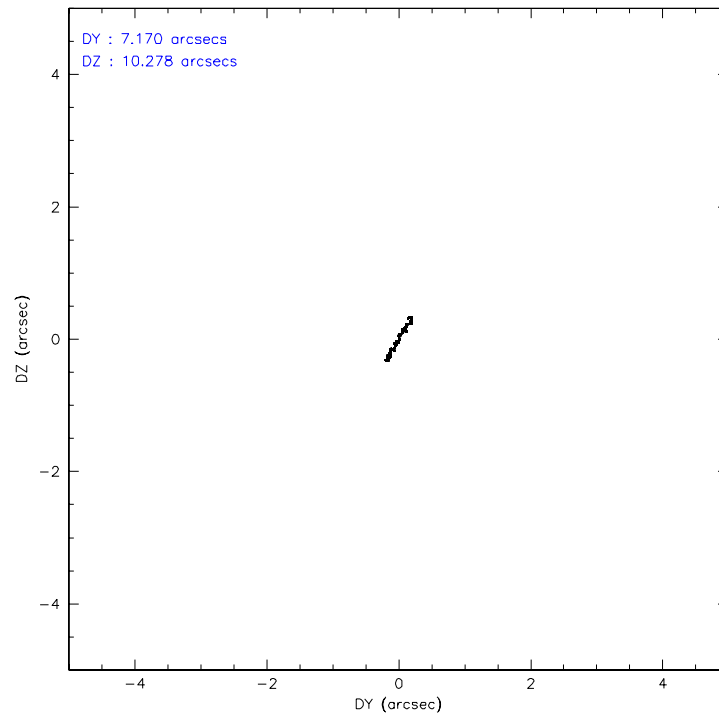
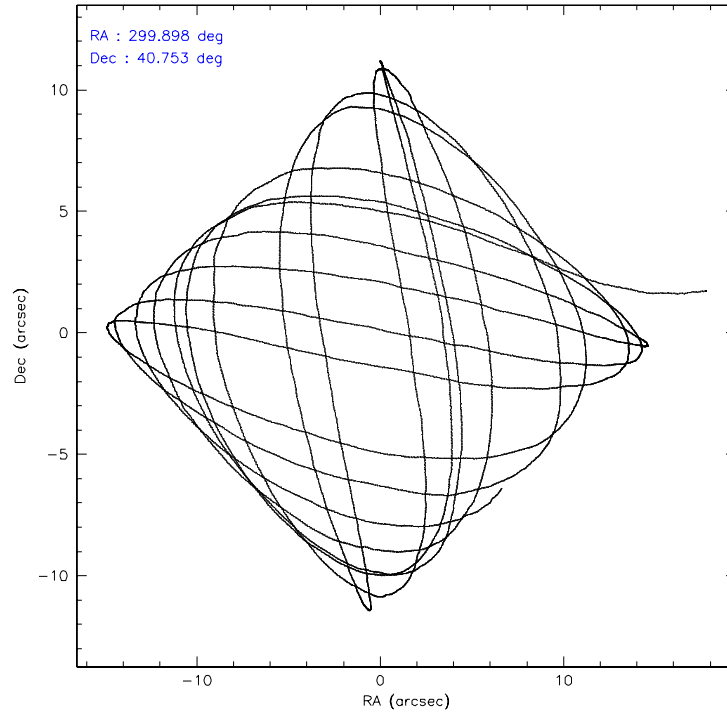
	ccd 0	ccd 1	ccd 2	ccd 3	ccd 6
level 1 events	43317	73098	45074	48579	42266
rejected events	34775	35934	36331	37306	37224
rejected %	80%	49%	80%	76%	88%

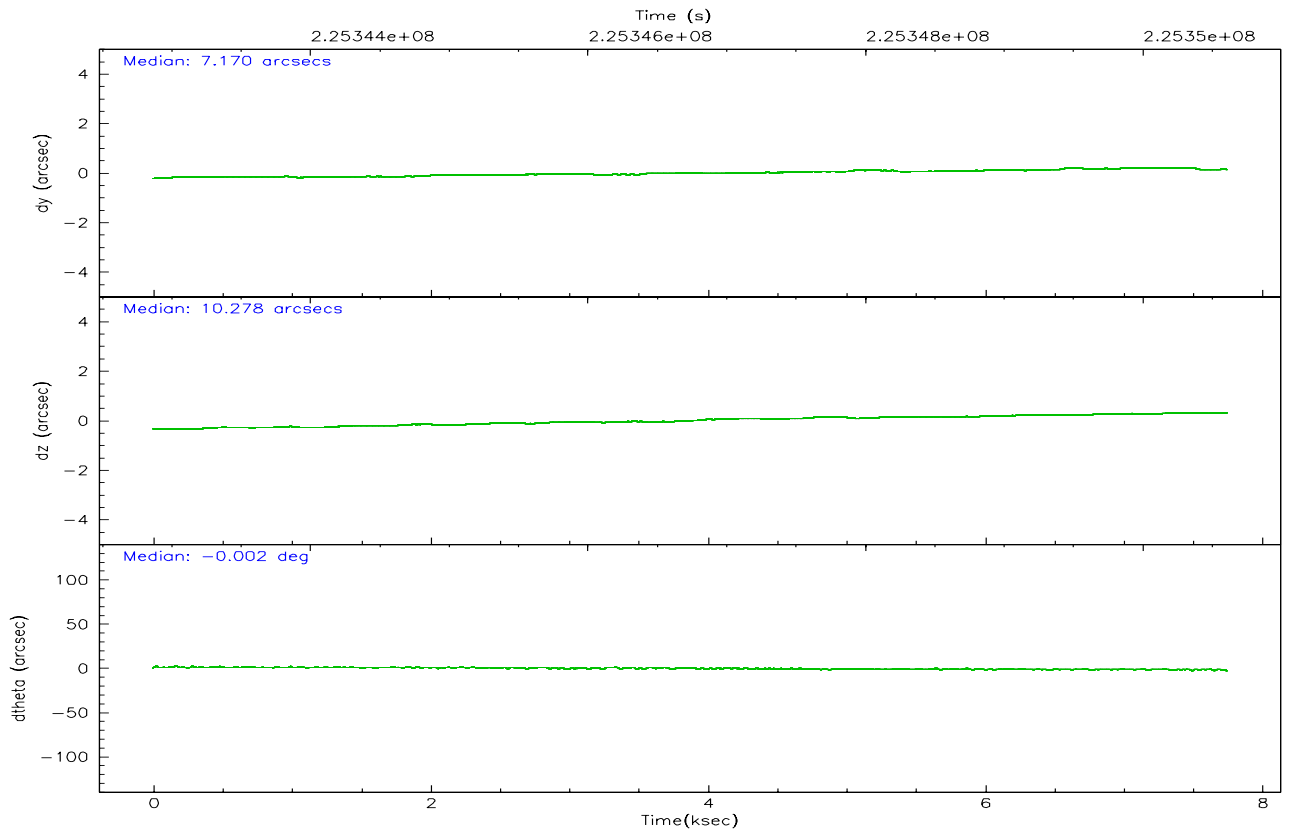
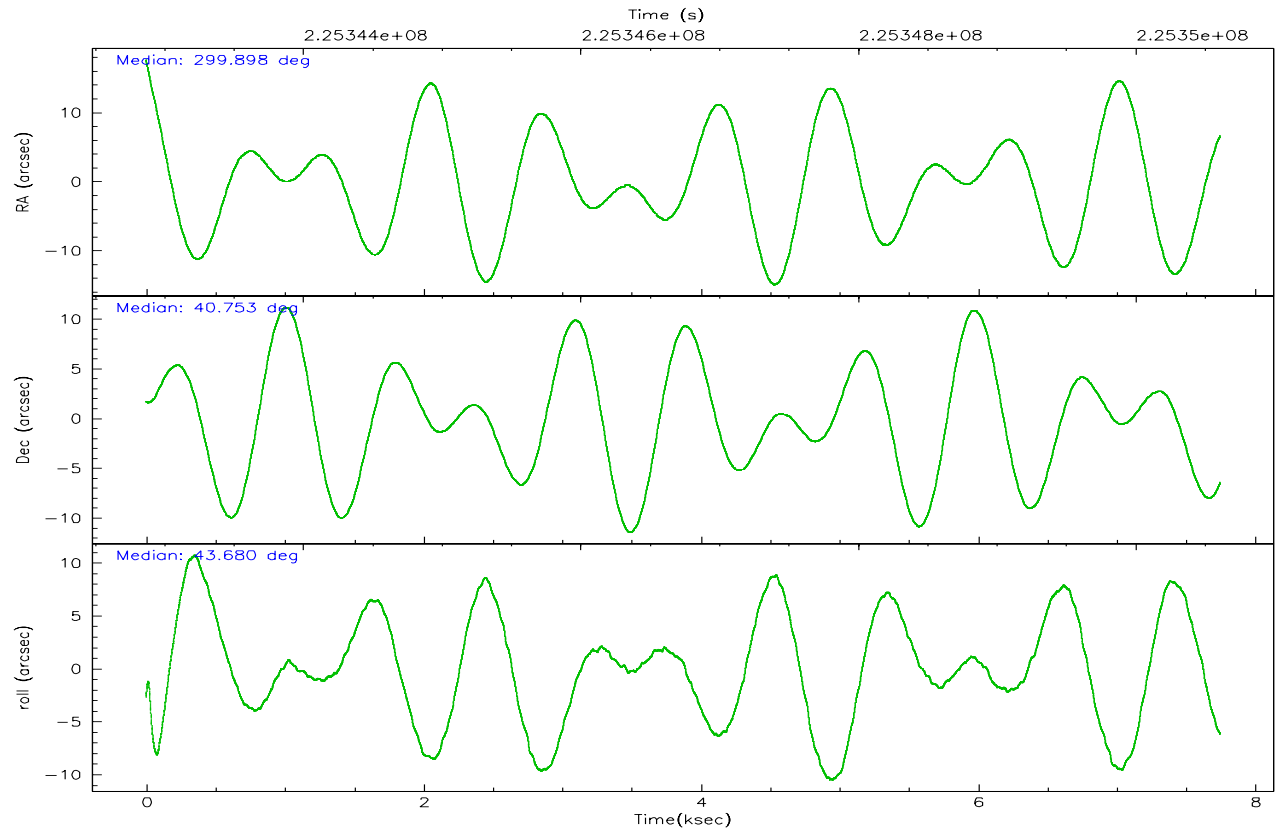
	ccd 0	ccd 1	ccd 2	ccd 3	ccd 6
grade 0 events	4905	26943	5210	7191	2149
	11%	36%	11%	14%	5%
grade 1 events	39	211	34	50	15
	0%	0%	0%	0%	0%
grade 2 events	1447	4722	1403	1637	974
	3%	6%	3%	3%	2%
grade 3 events	681	1696	612	681	492
	1%	2%	1%	1%	1%
grade 4 events	568	1663	579	716	495
	1%	2%	1%	1%	1%
grade 5 events	1552	1775	1494	1744	1696
	3%	2%	3%	3%	4%
grade 6 events	954	2160	942	1058	935
	2%	2%	2%	2%	2%
grade 7 events	33171	33928	34800	35502	35510
	76%	46%	77%	73%	84%

2.2 Compared Parameters

Parameter	Planned	Actual	Parameter	Planned	Actual
Instrument	ACIS	ACIS	Obspar format version number	6	6
Detector	ACIS-01236	ACIS-01236	Obspar file type	PREDICTED	ACTUAL
Grating	NONE	NONE	Obspar update status	NONE	UPDATED
Data mode	VFAINT	VFAINT	On-chip summing requested	N	N
Observation mode	POINTING	POINTING	Subarray requested	NONE	NONE
Pointing RA	299.887572	299.897521821955	Alternating exposures requested	N	N
Pointing Dec	40.726424	40.75270543176929	Primary exposure time	0.000000	3.1
Pointing Roll	43.487167	43.6893833697121			
SIM focus pos (mm)	-0.782348	-0.7809083437167272			
SIM defocus (mm)	0	0.001439871863259334			
SIM translation stage pos (mm)	-242.392463	-242.3975952774949			
SIM translation stage offset (mm)	8.800000000000001	8.805142274565242			
Observation start time	225343605.184000	225342396.03652			
Observation start date	2005-02-21T03:25:41	2005-02-21T03:06:36			
Observation end time	225350605.184000	225351695.34944			
Observation end date	2005-02-21T05:22:21	2005-02-21T05:41:35			
Read mode	TIMED	TIMED			

2.3 Aspect



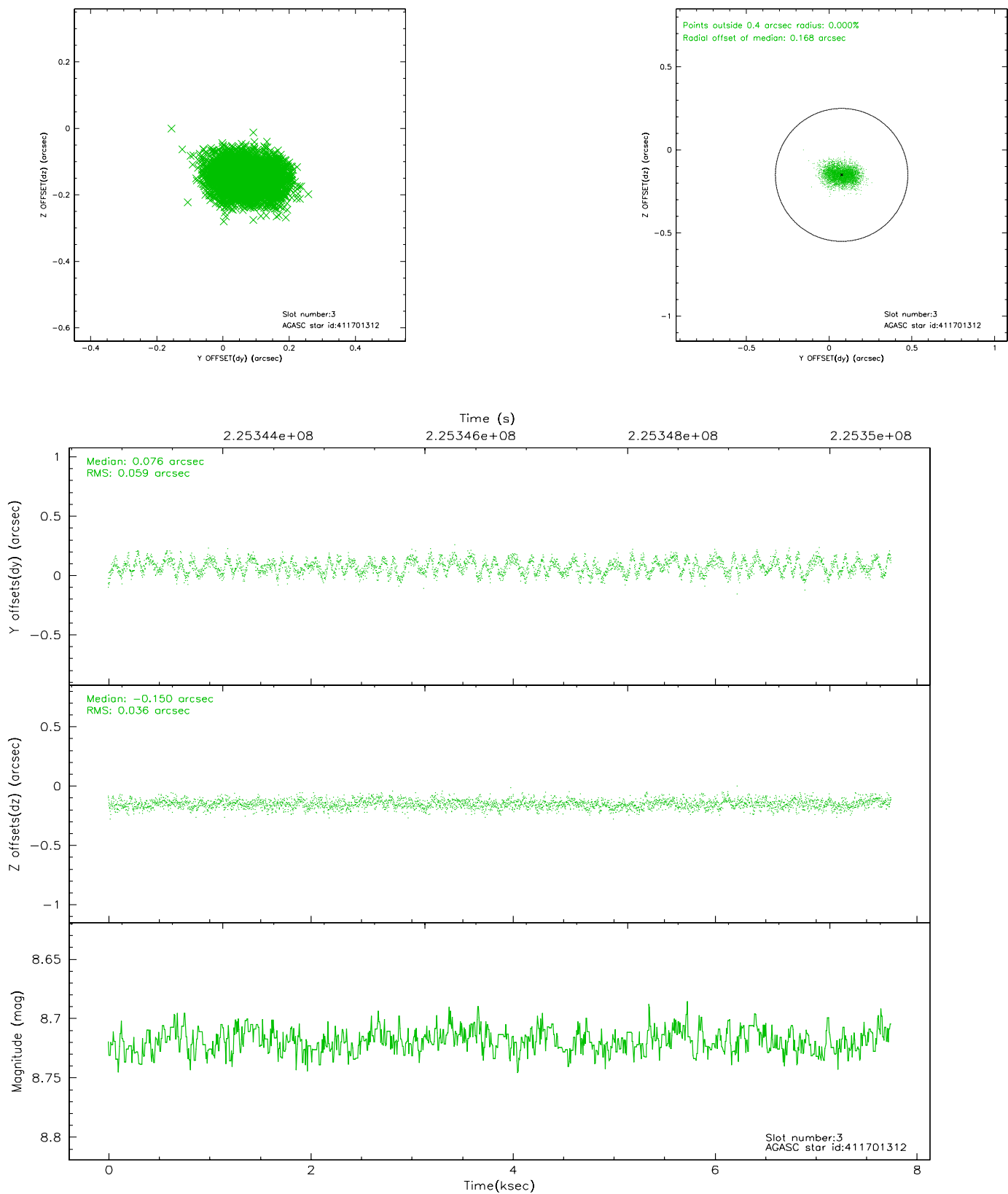


Slot Statistics

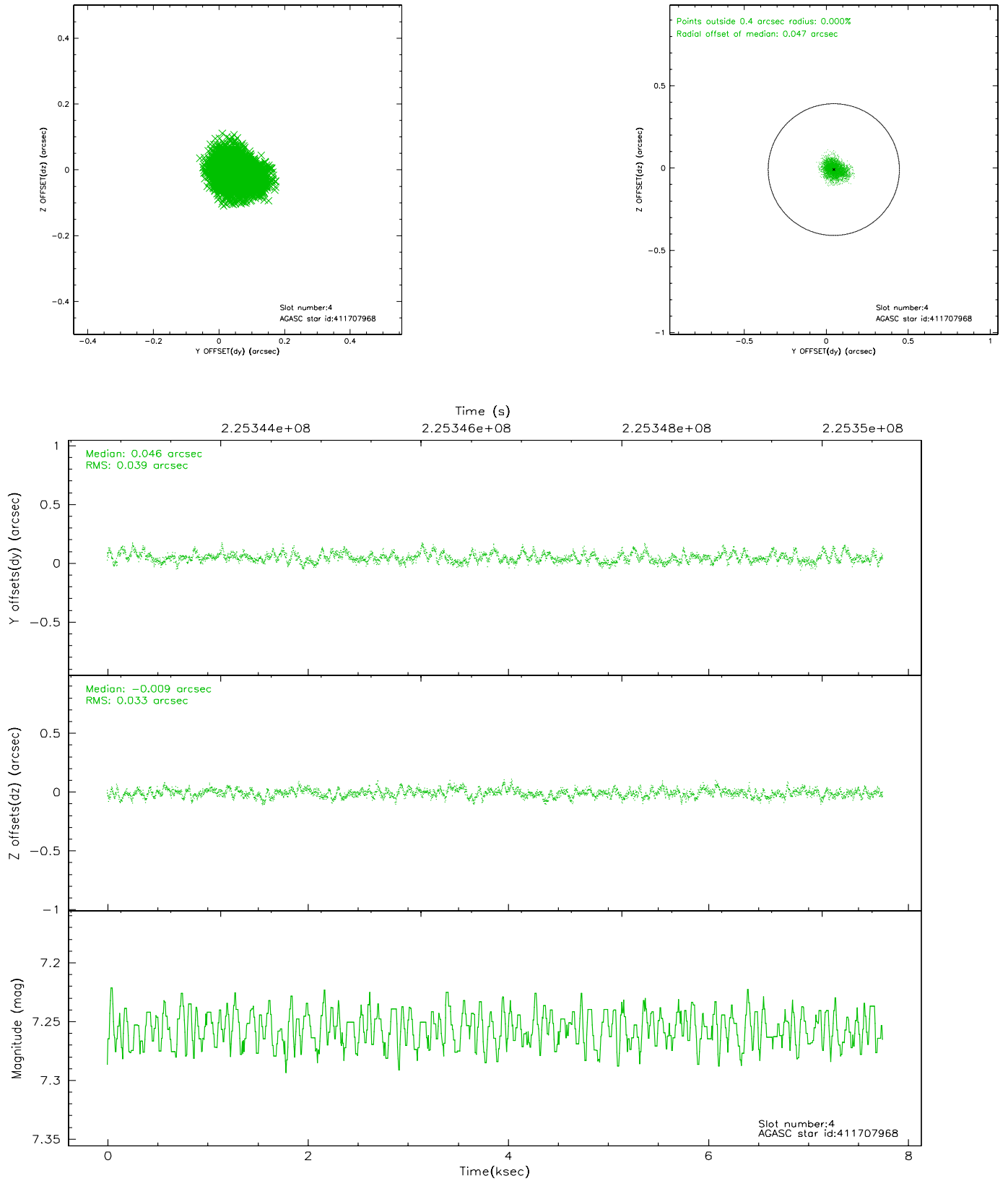
slot	status	id	mag	n_pts	med_dy	med_dz	dr1	dr2	ra	dec	mean_y	mean_z
0	FID	ACIS-I-1	7.28	1890	-0.060	0.126	0.010	0.017	0.000000	0.000000	932.61	-652.66
1	FID	ACIS-I-5	7.23	1888	-0.068	0.004	0.006	0.010	0.000000	0.000000	-1815.10	1244.44
2	FID	ACIS-I-6	7.24	1890	0.036	-0.060	0.010	0.016	0.000000	0.000000	397.46	1889.70
3	GUIDE	411701312	8.72	3779	0.076	-0.150	0.075	0.118	298.889956	40.820220	-1728.67	2126.27
4	GUIDE	411707968	7.26	3780	0.046	-0.009	0.054	0.089	299.509933	40.926839	-247.31	1232.56
5	GUIDE	413405352	8.35	3780	0.002	-0.195	0.058	0.092	300.290830	41.091941	1701.40	204.00
6	GUIDE	413418680	9.30	3776	0.036	0.244	0.095	0.155	300.860298	40.740057	1969.75	-1779.04
7	GUIDE	413421016	8.71	3778	-0.161	0.109	0.068	0.111	300.612426	40.446254	753.33	-2092.68

2.4 Star Slots

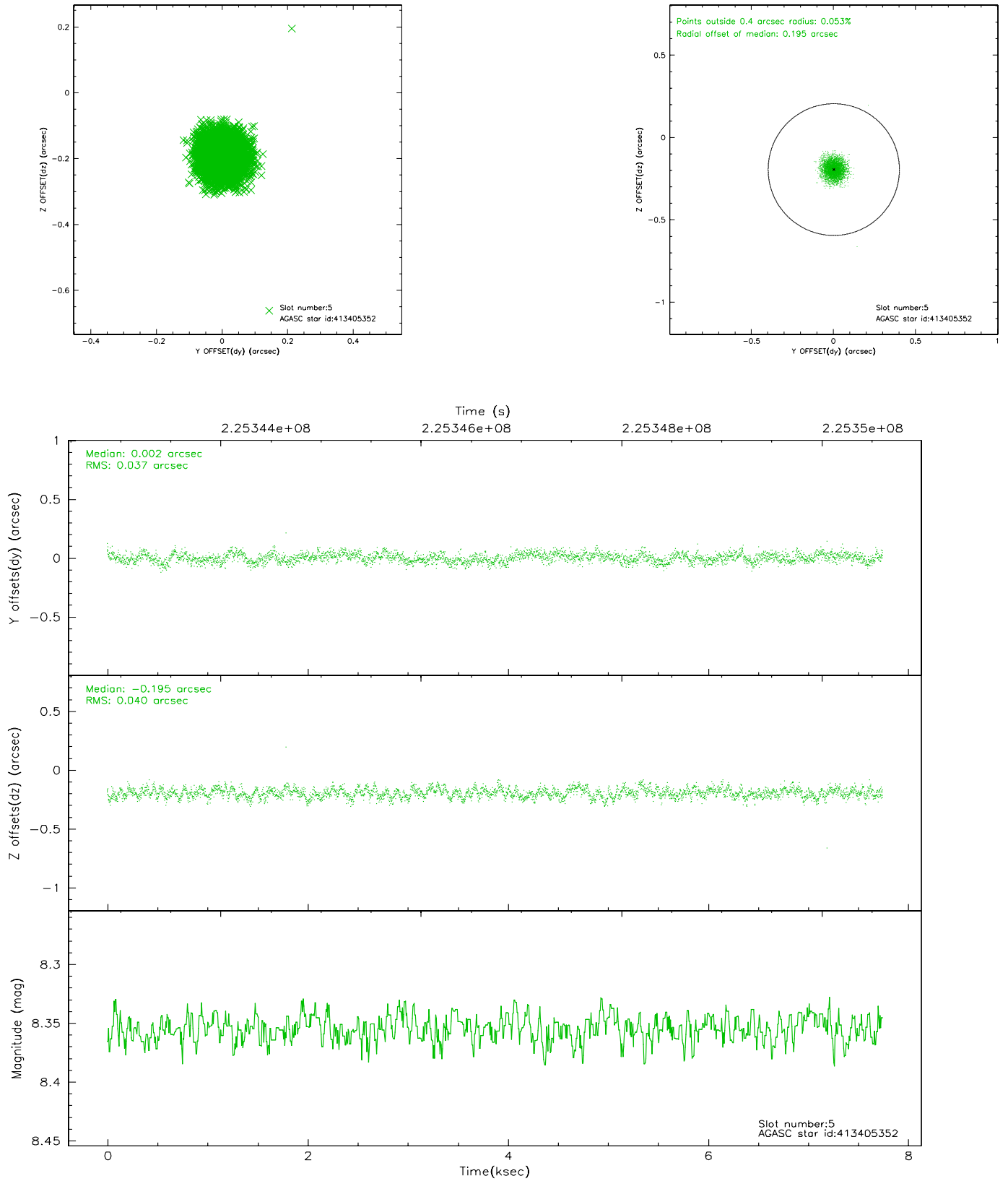
2.4.1 Slot 3



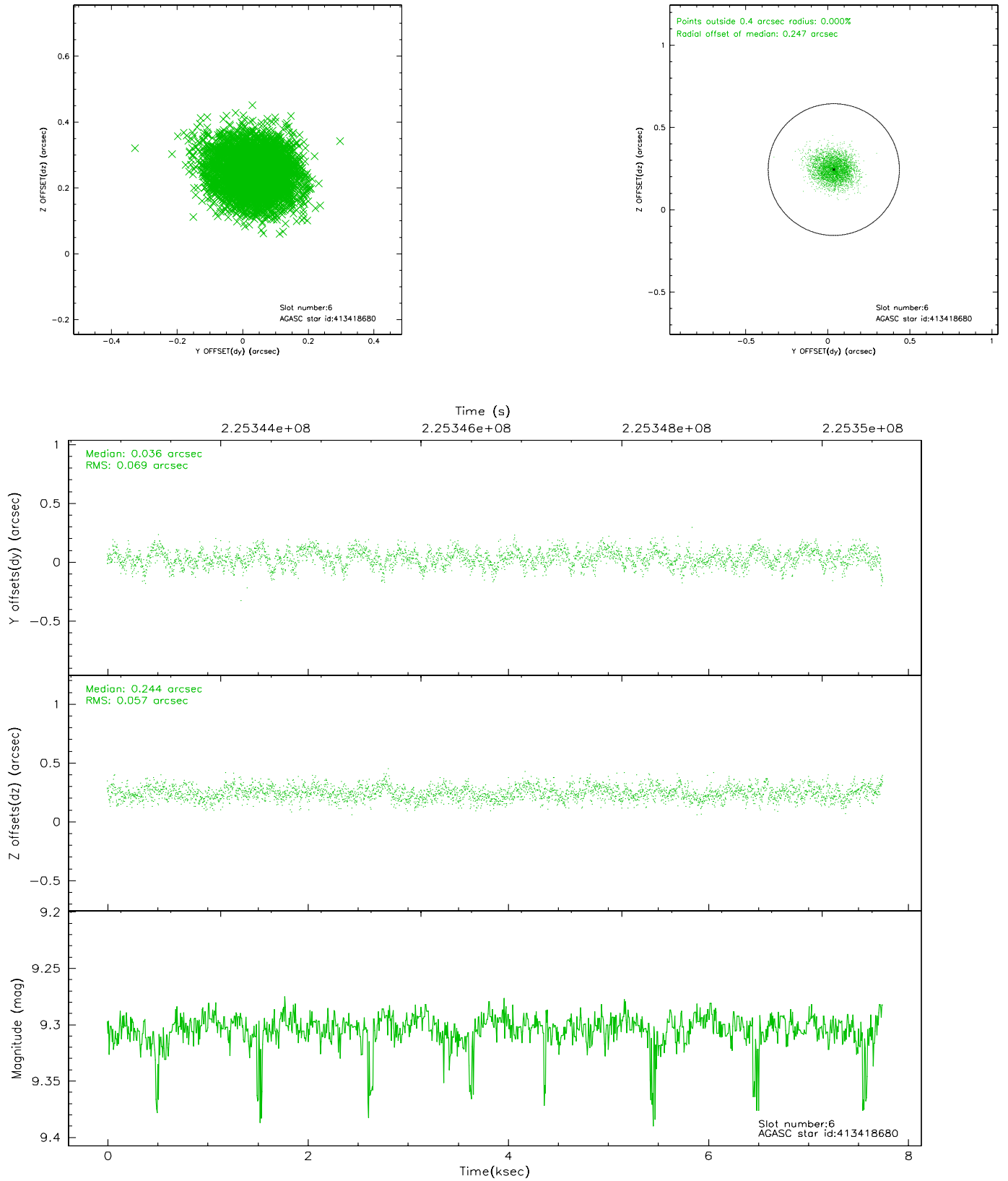
2.4.2 Slot 4



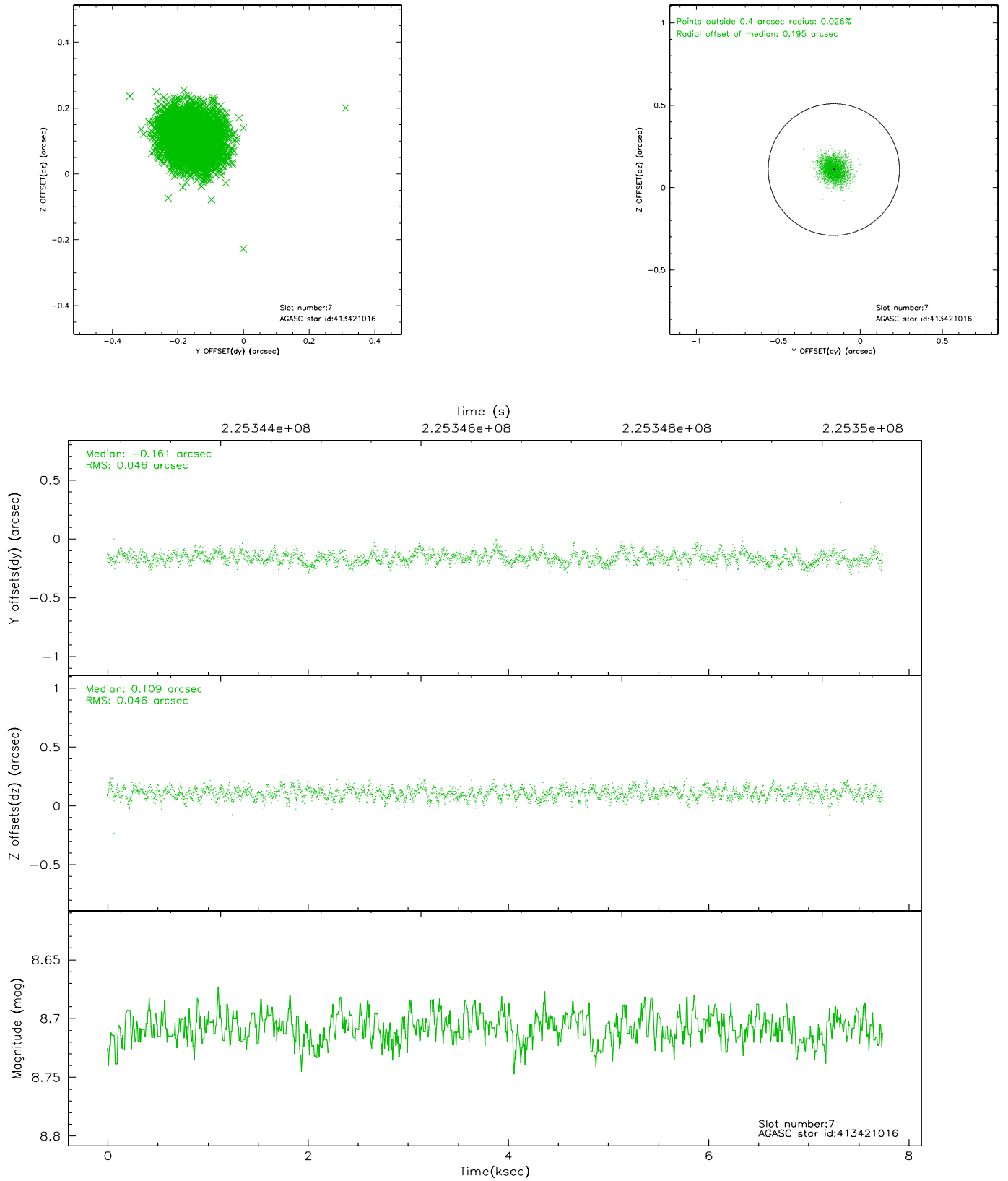
2.4.3 Slot 5



2.4.4 Slot 6

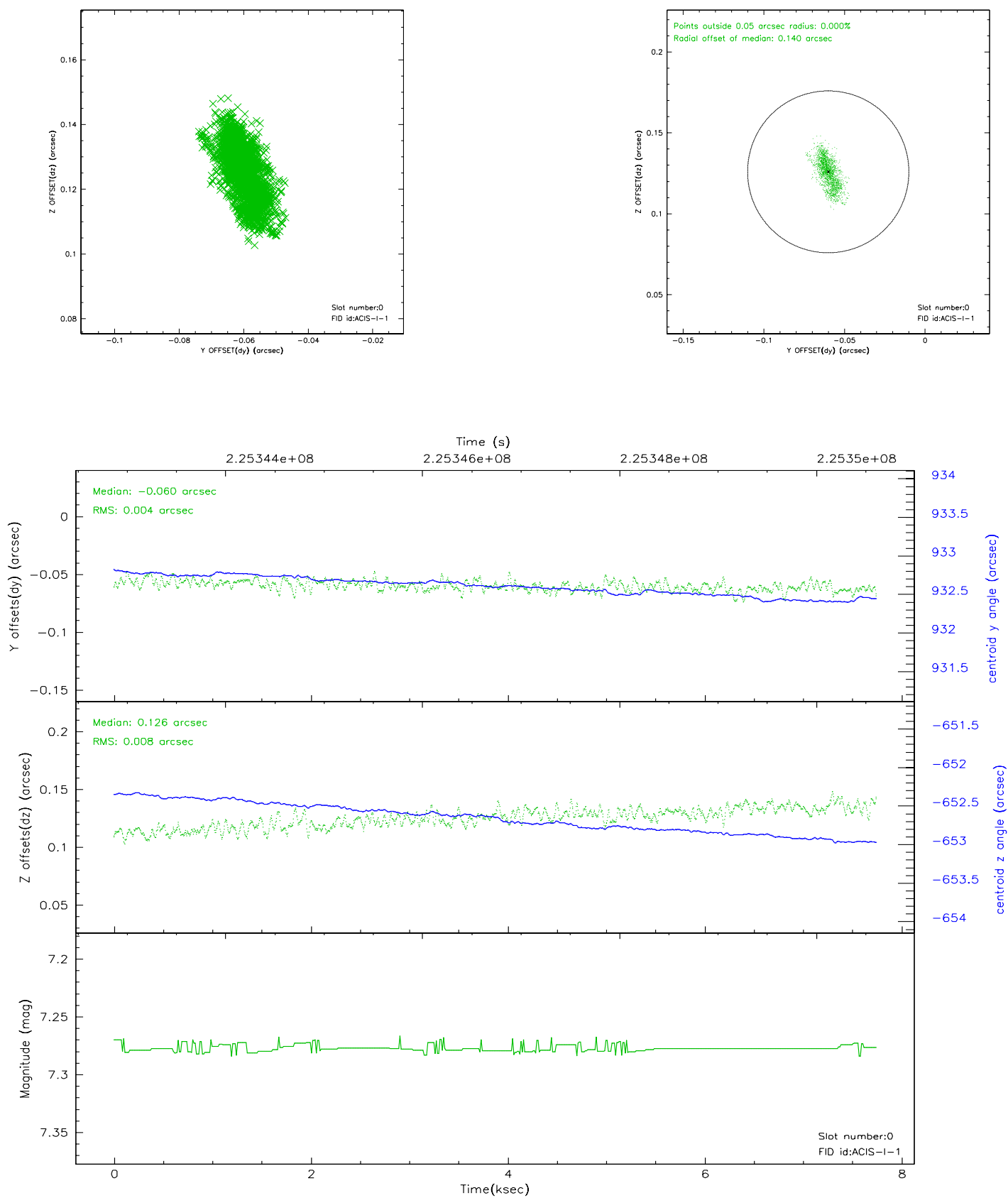


2.4.5 Slot 7

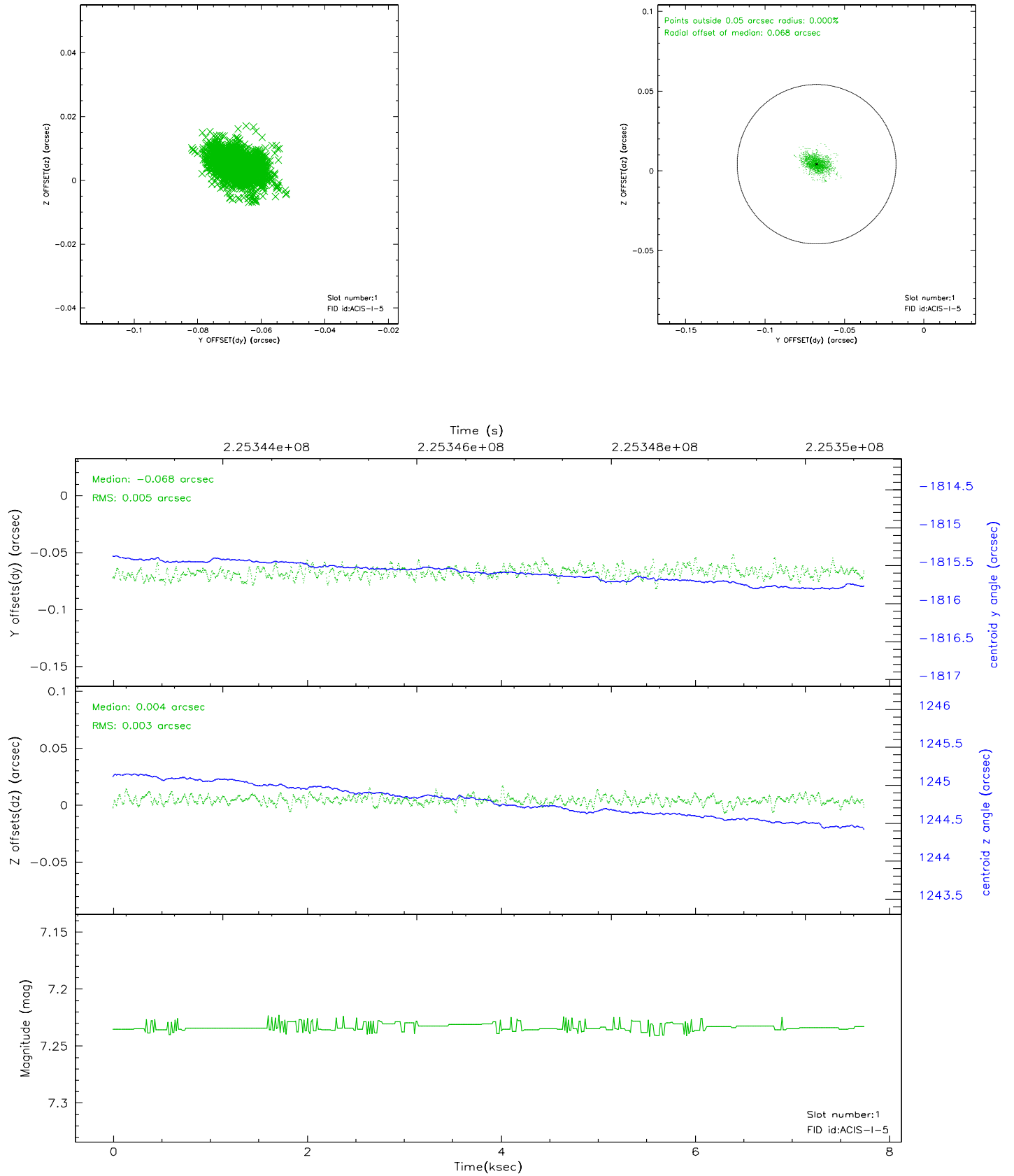


2.5 FID Slots

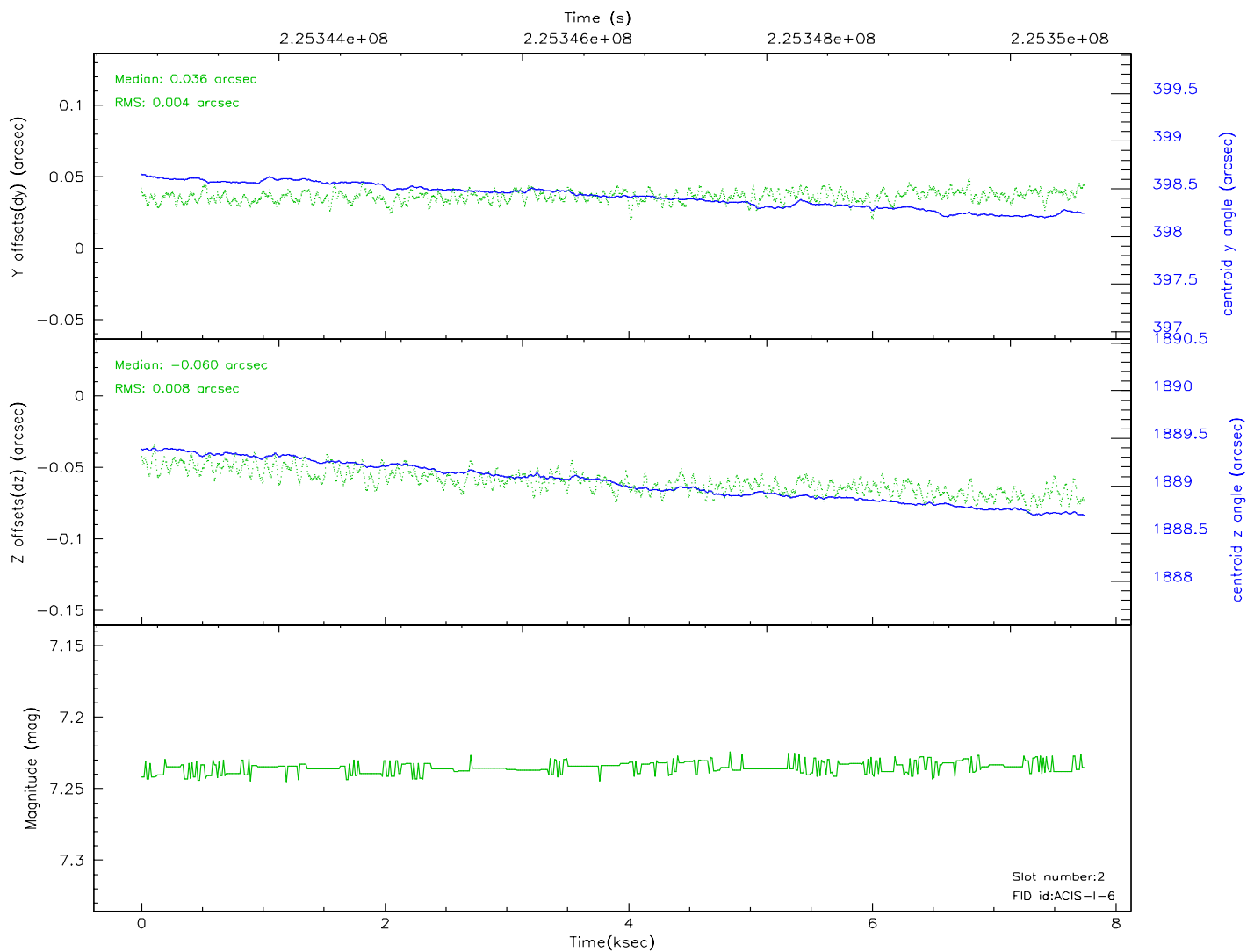
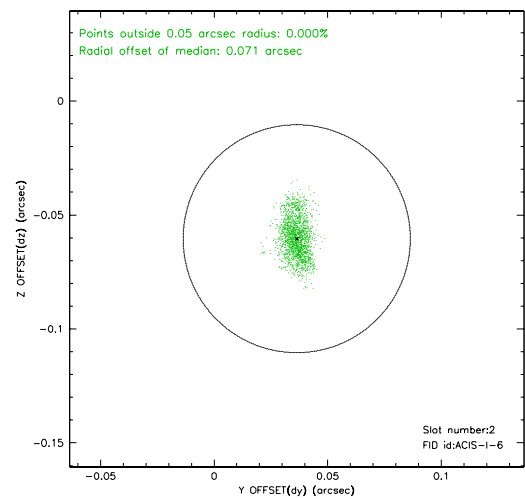
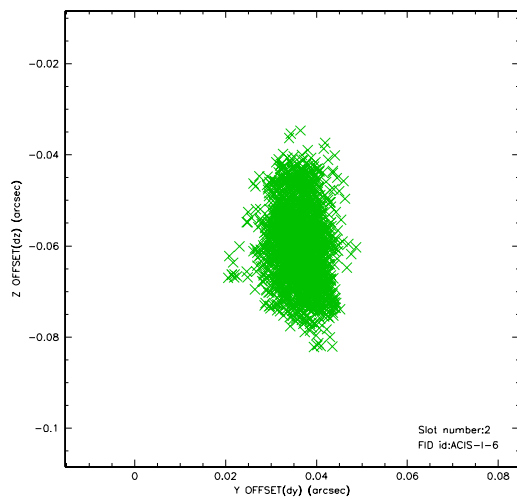
2.5.1 Slot 0



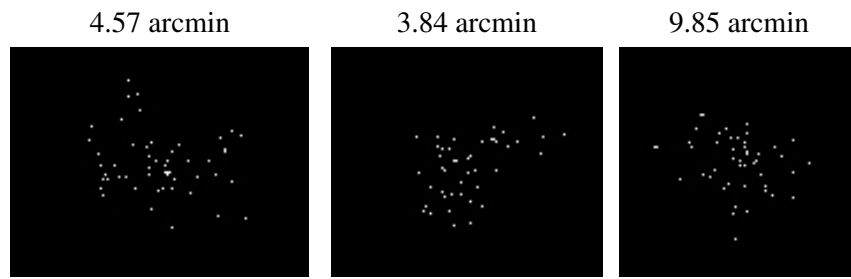
2.5.2 Slot 1



2.5.3 Slot 2



3 Point Sources



A Summary

A.1 Status

V&V Scientist	Beth Sundheim
V&V Date (YYYY-MM-DD)	2006.02.24
V&V Edition	1
V&V Disposition and Status	OK
V&V Charge Time	7.049358

A.2 Comments