

V&V Reference Report

L2 ASCDS Version : 8.2.1

Observation 62410 - L2 Version 4
Chandra X-Ray Center

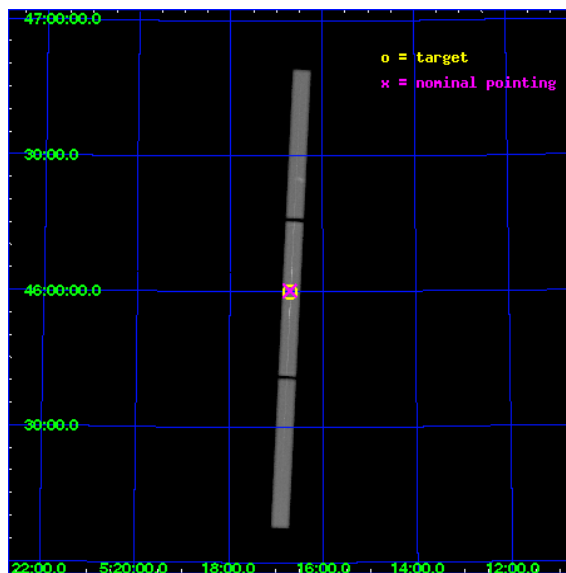
L2 Processing Date : Jan 13 2010

Contents

1	Front	2
2	OBI	3
2.1	OBI	3
2.1.1	Images	3
2.1.2	Parameters	4
2.1.3	Events	4
2.2	Compared Parameters	5
2.3	Aspect	6
2.4	Star Slots	9
2.4.1	Slot 3	9
2.4.2	Slot 4	10
2.4.3	Slot 5	11
2.4.4	Slot 6	12
2.4.5	Slot 7	13
2.5	FID Slots	14
2.5.1	Slot 0	14
2.5.2	Slot 1	15
2.5.3	Slot 2	16
3	Gratings	17
3.1	LETG Arm	17
A	Summary	19
A.1	Status	19
A.2	Comments	19

1 Front

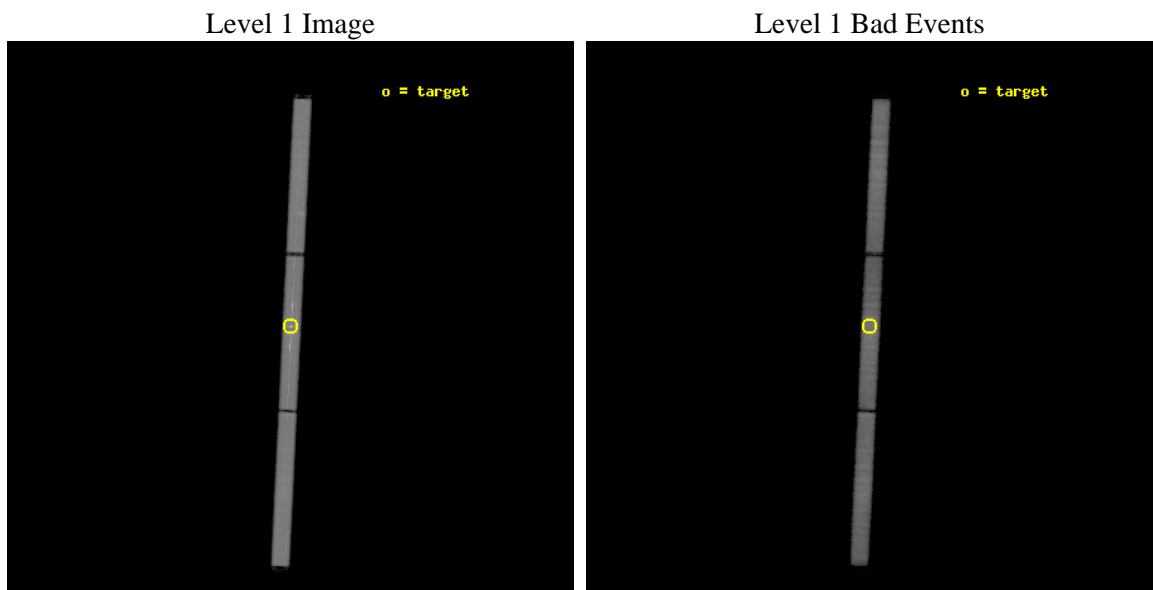
seq_num	290132	Sequence number
obs_id	62410	Observation id
title	 	Proposal title
observer	Dr. CXC Calibration	Principal investigator
object	CAPELLA	Source name
ra_targ	79.17625	Observer's specified target RA
dec_targ	45.997889	Observer's specified target Dec
ra_nom	79.176662721836	Nominal RA
dec_nom	46.003321870949	Nominal Dec
roll_nom	92.707717429748	Nominal Roll
revision	4	Processing version of data
ontime	11322.406656429	[s]
livetime	11227.382242493	Ontime multiplied by DTCOR
l2events	667351	Number of level 2 events



2 OBI

2.1 OBI

2.1.1 Images



2.1.2 Parameters

obi_num	0	Obi number	sched_exp_time	15000.000000	Scheduled observation exposure time
ascdsver	8.2.1	Processing system revision	ontime	11322.406656429	[s]
caldbver	4.1.5	 	ll events	1045446	Number of level 1 events
date	2010-01-13T10:21:31	Date and time of file creation			
revision	4	Processing version of data			

2.1.3 Events

Level 1 Events

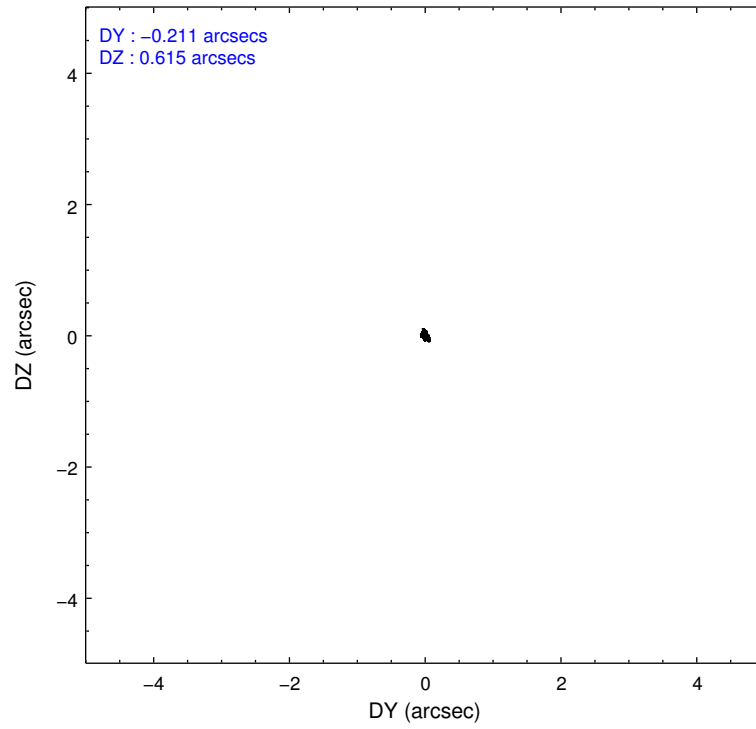
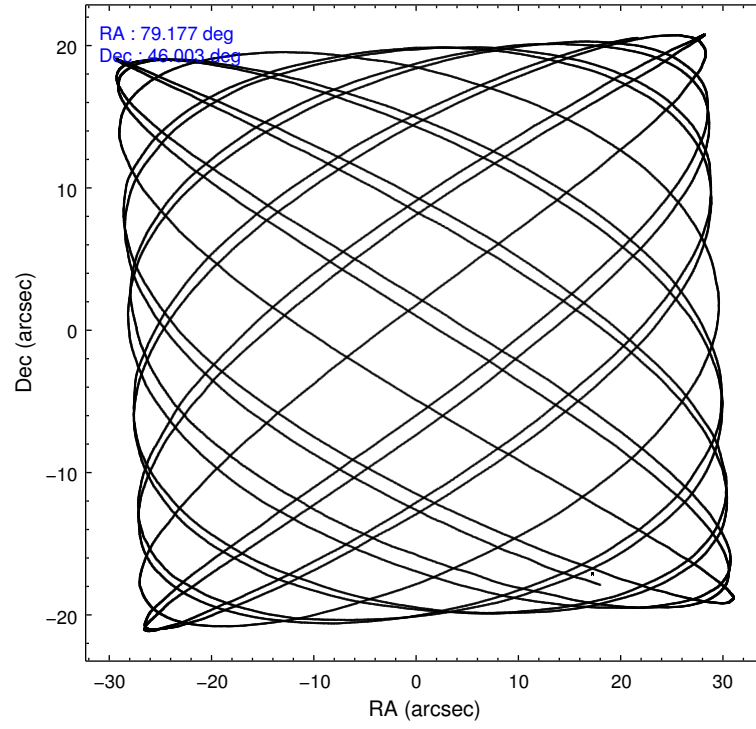
	segment 1	segment 2	segment 3
level 1 events	334095	372827	338524
rejected events	88731	92891	107748
rejected %	26%	24%	31%

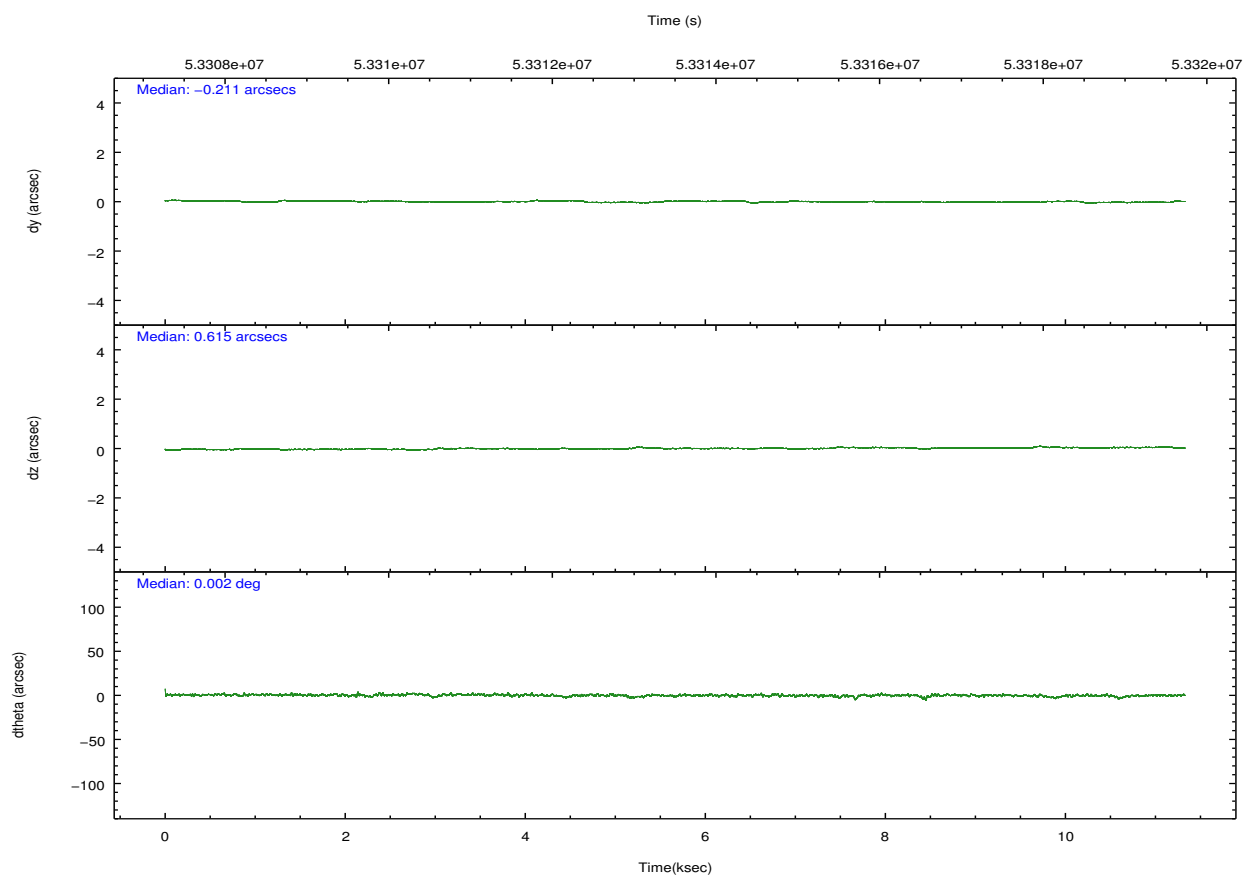
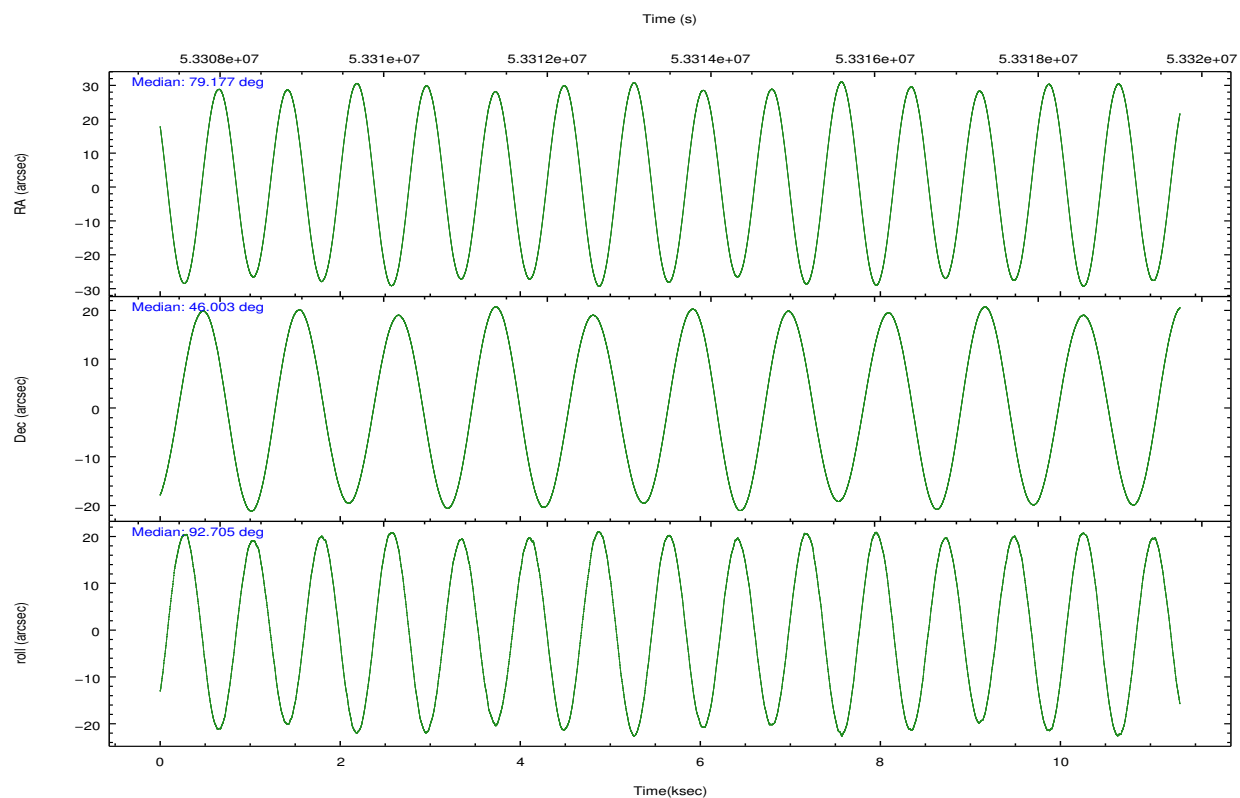
2.2 Compared Parameters

Parameter	Planned	Actual
Instrument	HRC	HRC
Detector	HRC-S	HRC-S
Grating	LETG	LETG
Data mode	OBSERVING	OBSERVING
Observation mode	POINTING	POINTING
Pointing RA	79.200054	79.17666272183627
Pointing Dec	45.979303	46.00332187094908
Pointing Roll	92.623559	92.70771742974844
SIM focus pos (mm)	-1.229263	-1.08446789718153
SIM defocus (mm)	0.3040737710433288	0.4488687422227668
SIM translation stage pos (mm)	250.455976	250.466033080201
SIM translation stage offset (mm)	0	-0.01005468664627074
Observation start time	53304164.184000	53307835.252711
Observation start date	1999-09-09T22:41:40	1999-09-09T23:43:55
Observation end time	53319164.184000	53319297.315623
Observation end date	1999-09-10T02:51:40	1999-09-10T02:54:57

Parameter	Planned	Actual
Obspar format version number	6	6
Obspar file type	PREDICTED	ACTUAL
Obspar update status	NONE	UPDATED

2.3 Aspect



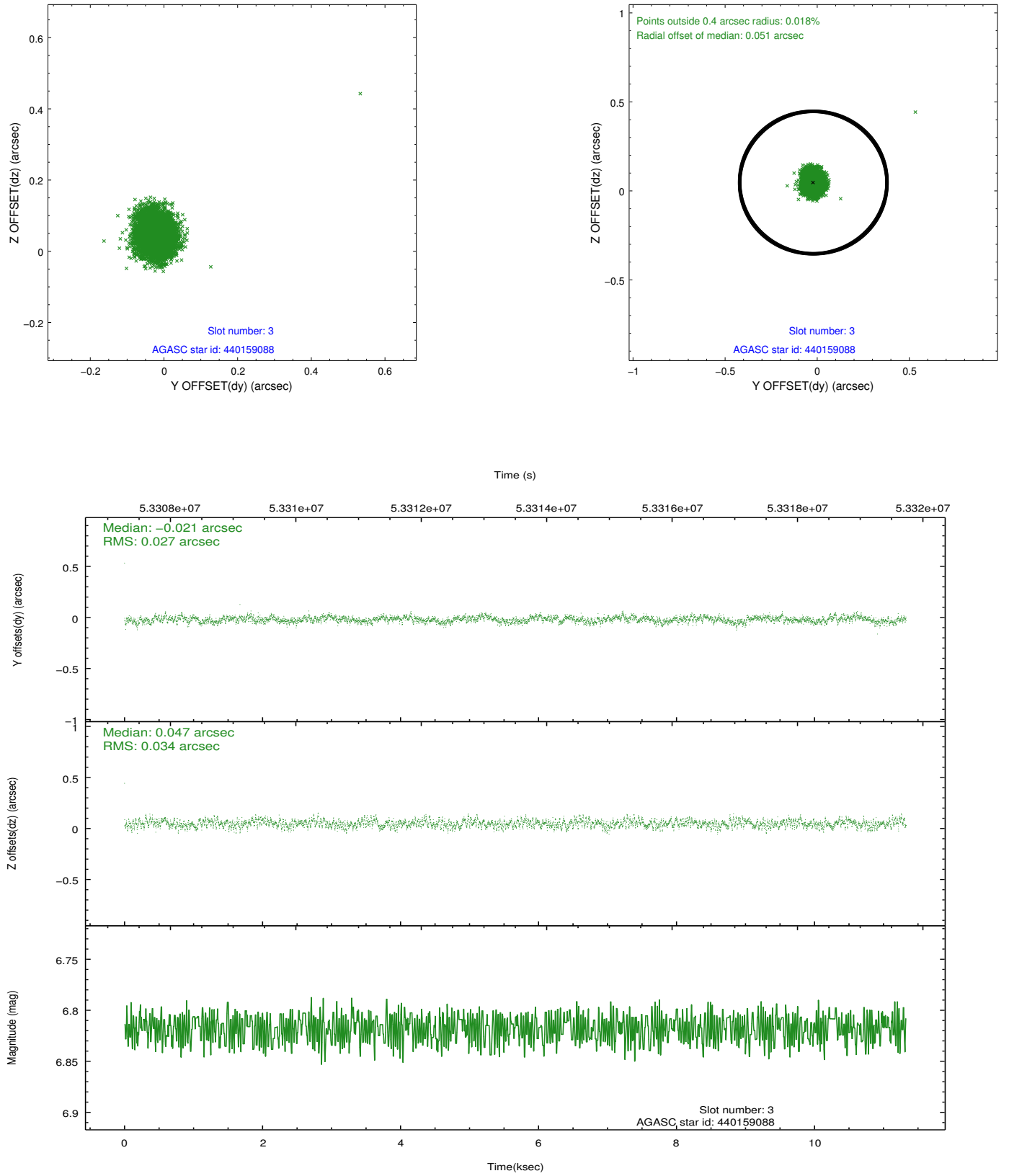


Slot Statistics

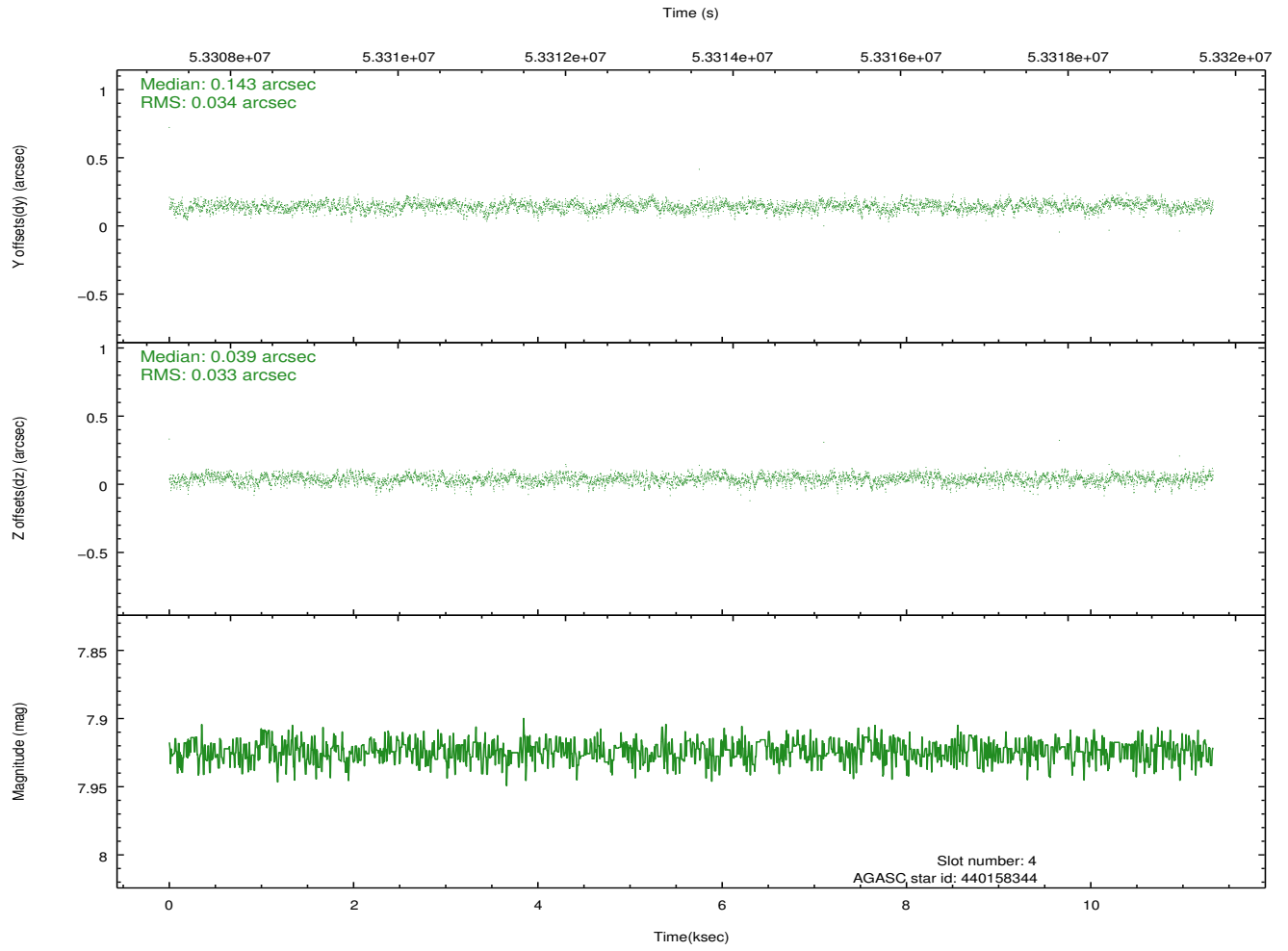
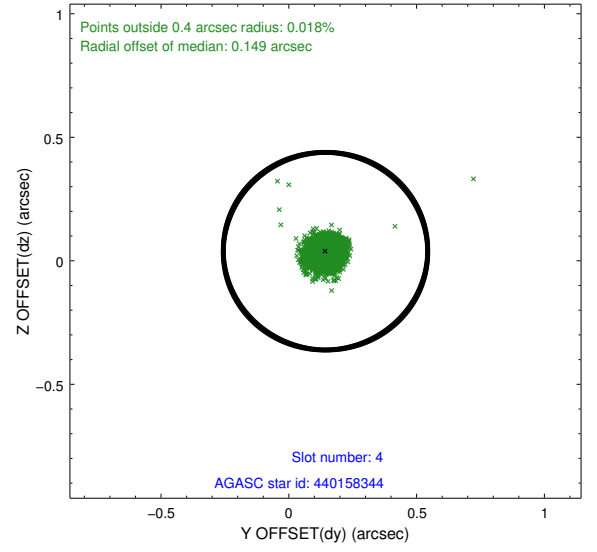
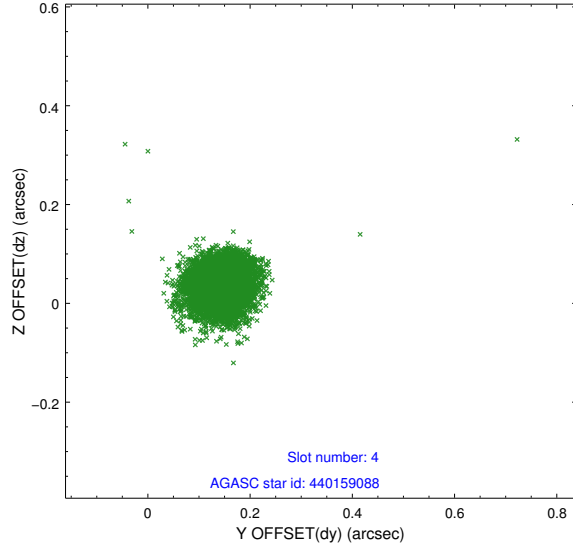
slot	status	id	mag	n_pts	med_dy	med_dz	dr1	dr2	ra	dec	mean_y	mean_z
0	FID	HRC-S-1	6.96	5527	0.137	-0.083	0.007	0.025	0.000000	0.000000	-1153.85	-448.82
1	FID	HRC-S-3	6.98	5527	0.115	-0.111	0.008	0.032	0.000000	0.000000	-1156.70	580.63
2	FID	HRC-S-4	6.94	5525	0.136	-0.103	0.005	0.012	0.000000	0.000000	1244.38	583.14
3	GUIDE	440159088	6.82	5527	-0.021	0.047	0.045	0.073	79.453034	46.128063	507.71	-654.66
4	GUIDE	440158344	7.92	5527	0.143	0.039	0.050	0.080	79.344888	45.394991	-2116.86	-269.31
5	GUIDE	440149808	8.42	5524	-0.059	-0.085	0.055	0.089	78.873930	46.405955	1573.21	738.63
6	GUIDE	438438936	8.97	5525	-0.151	-0.098	0.076	0.124	78.241026	46.550197	2176.82	2277.67
7	GUIDE	440145944	9.10	5523	0.089	0.101	0.081	0.127	80.083717	45.428844	-2068.32	-2139.34

2.4 Star Slots

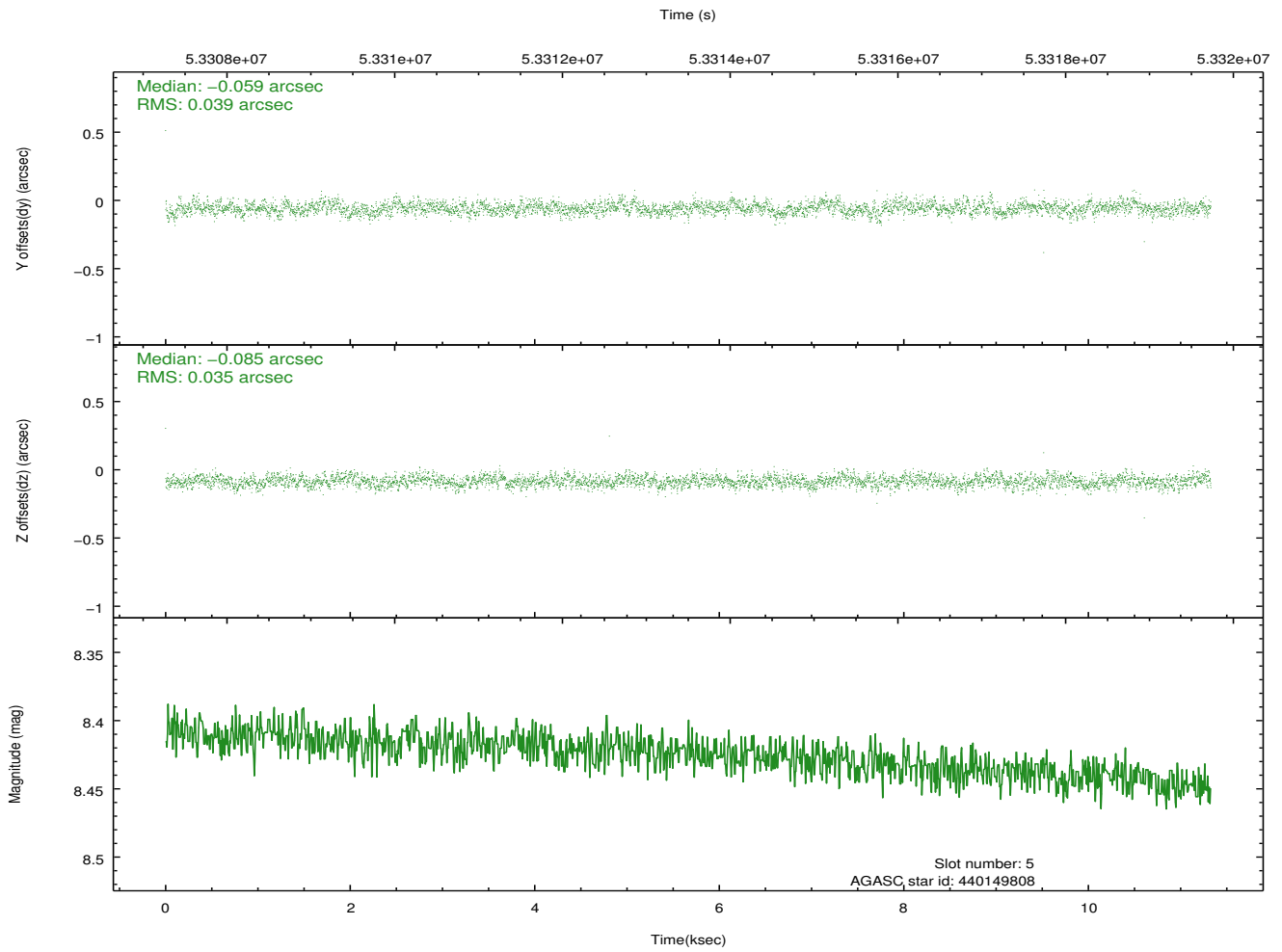
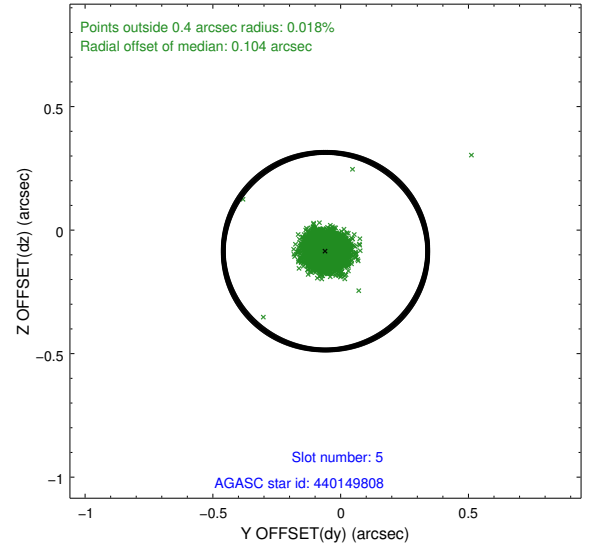
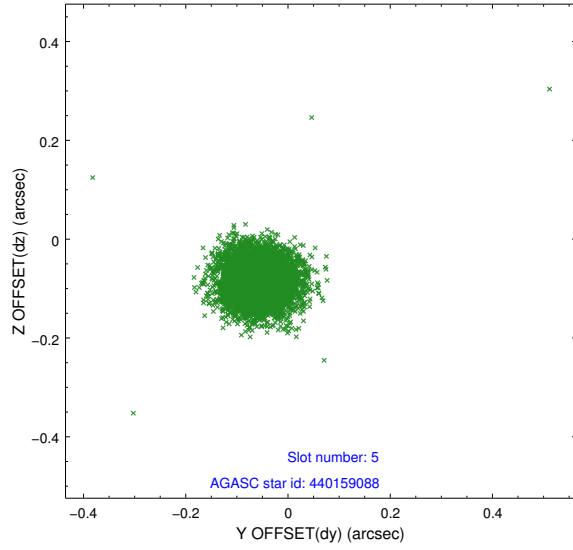
2.4.1 Slot 3



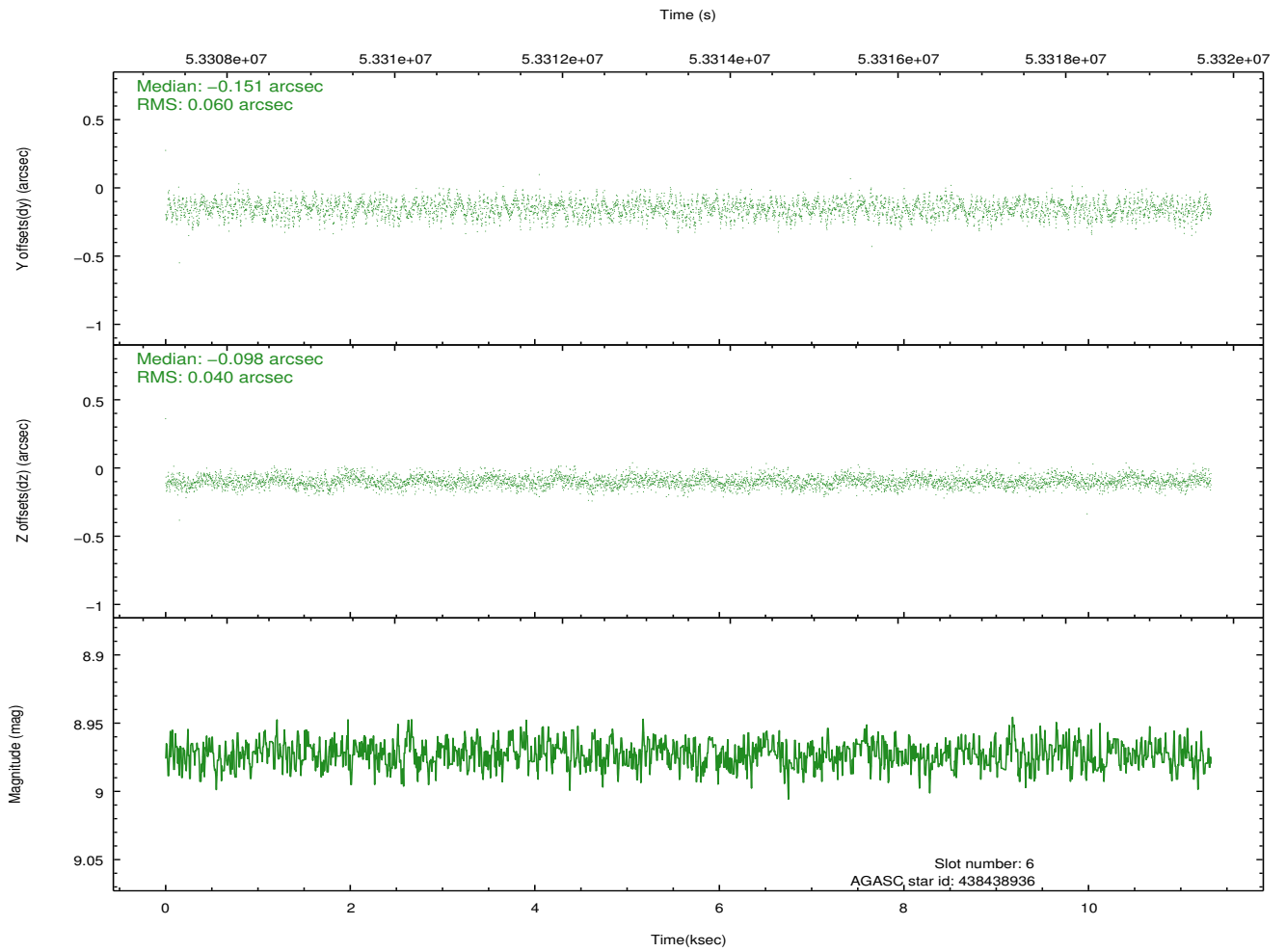
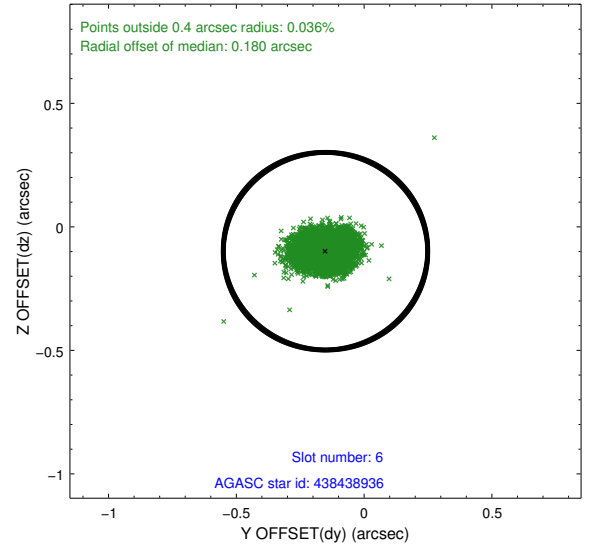
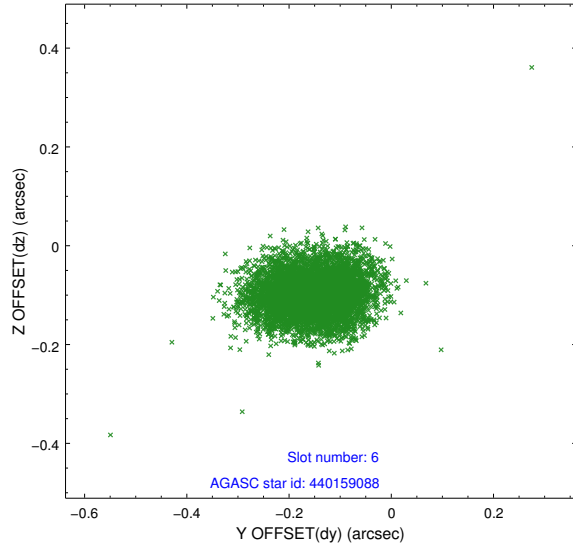
2.4.2 Slot 4



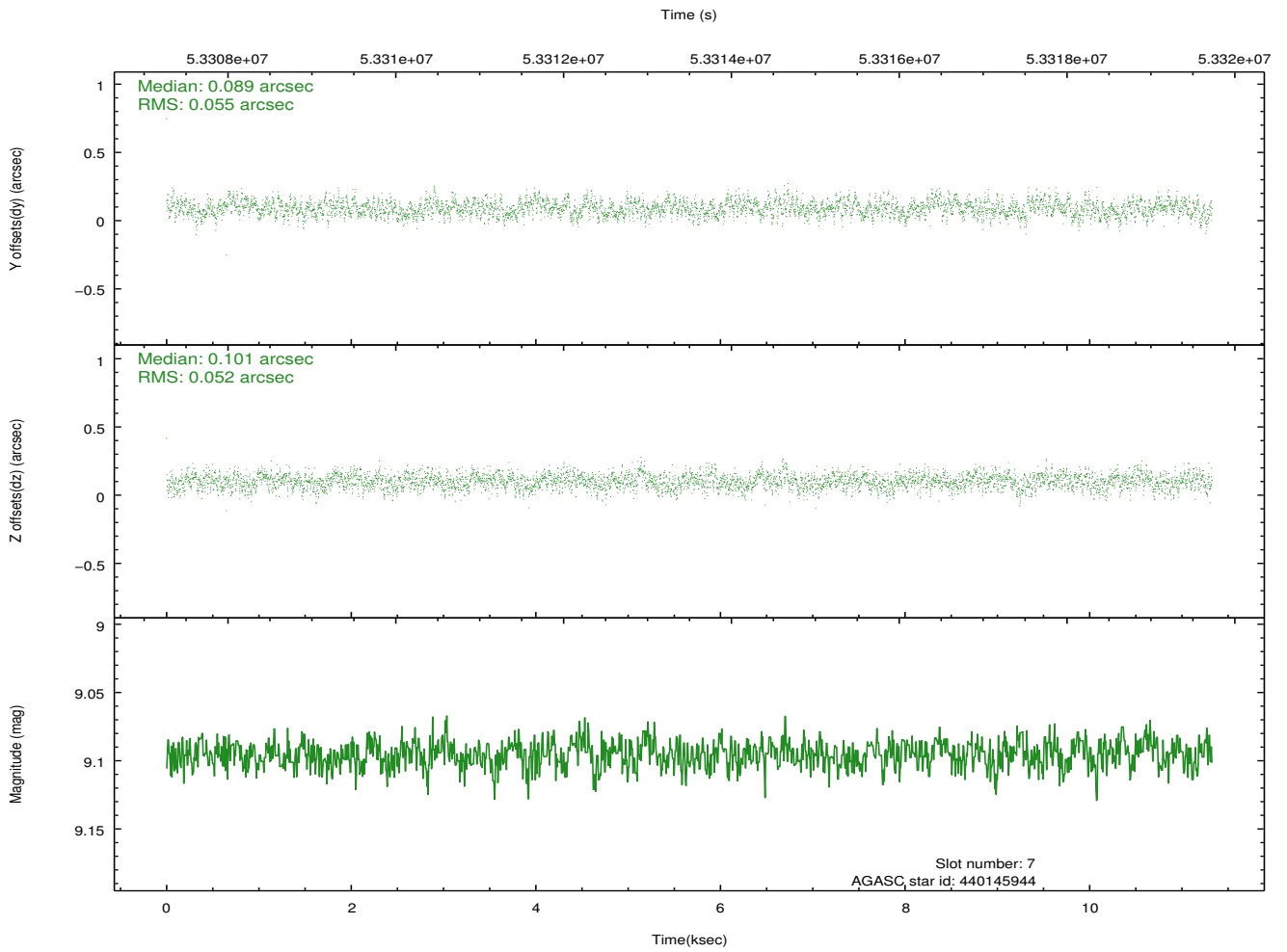
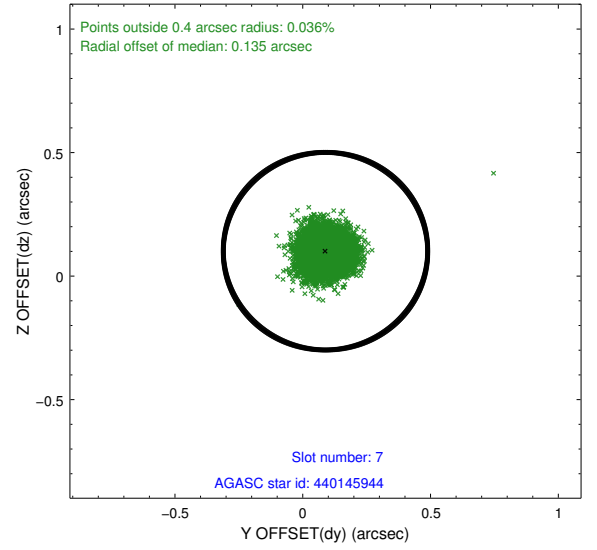
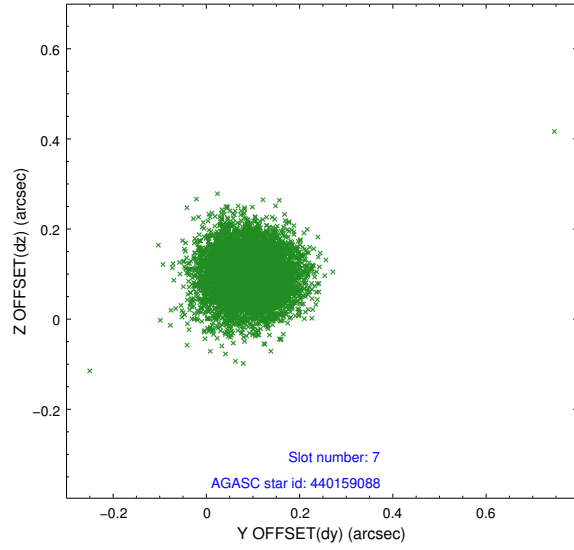
2.4.3 Slot 5



2.4.4 Slot 6

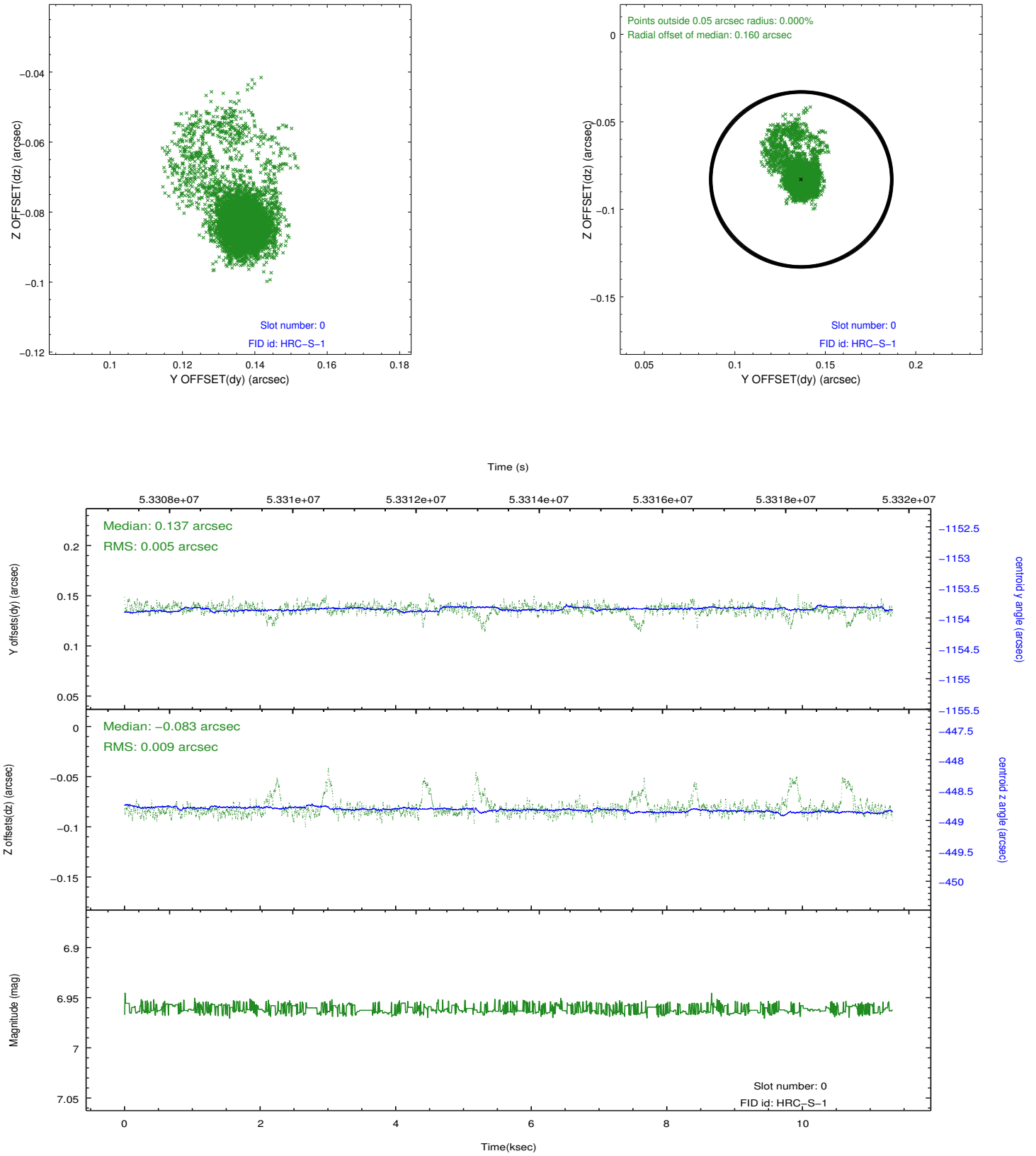


2.4.5 Slot 7

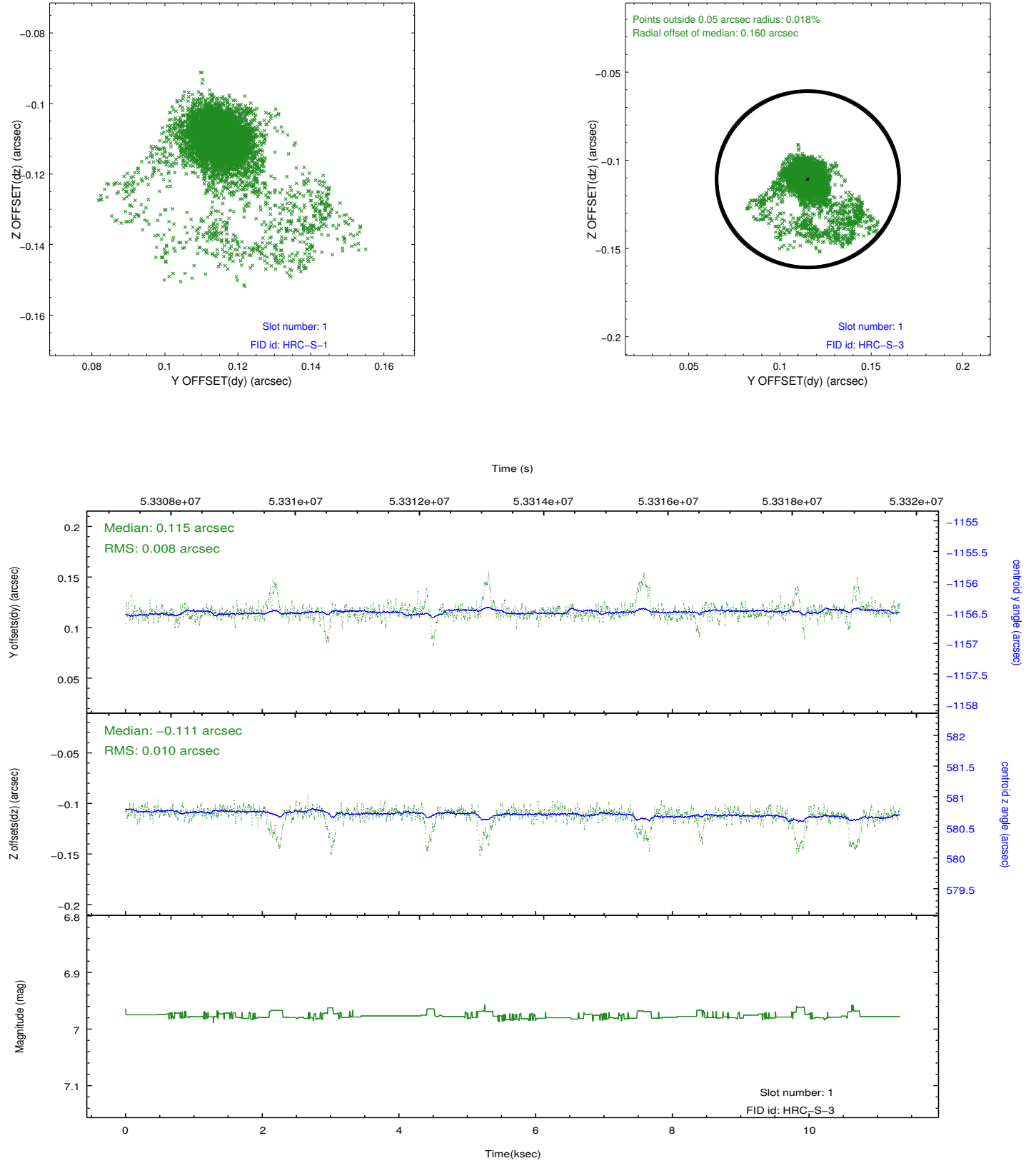


2.5 FID Slots

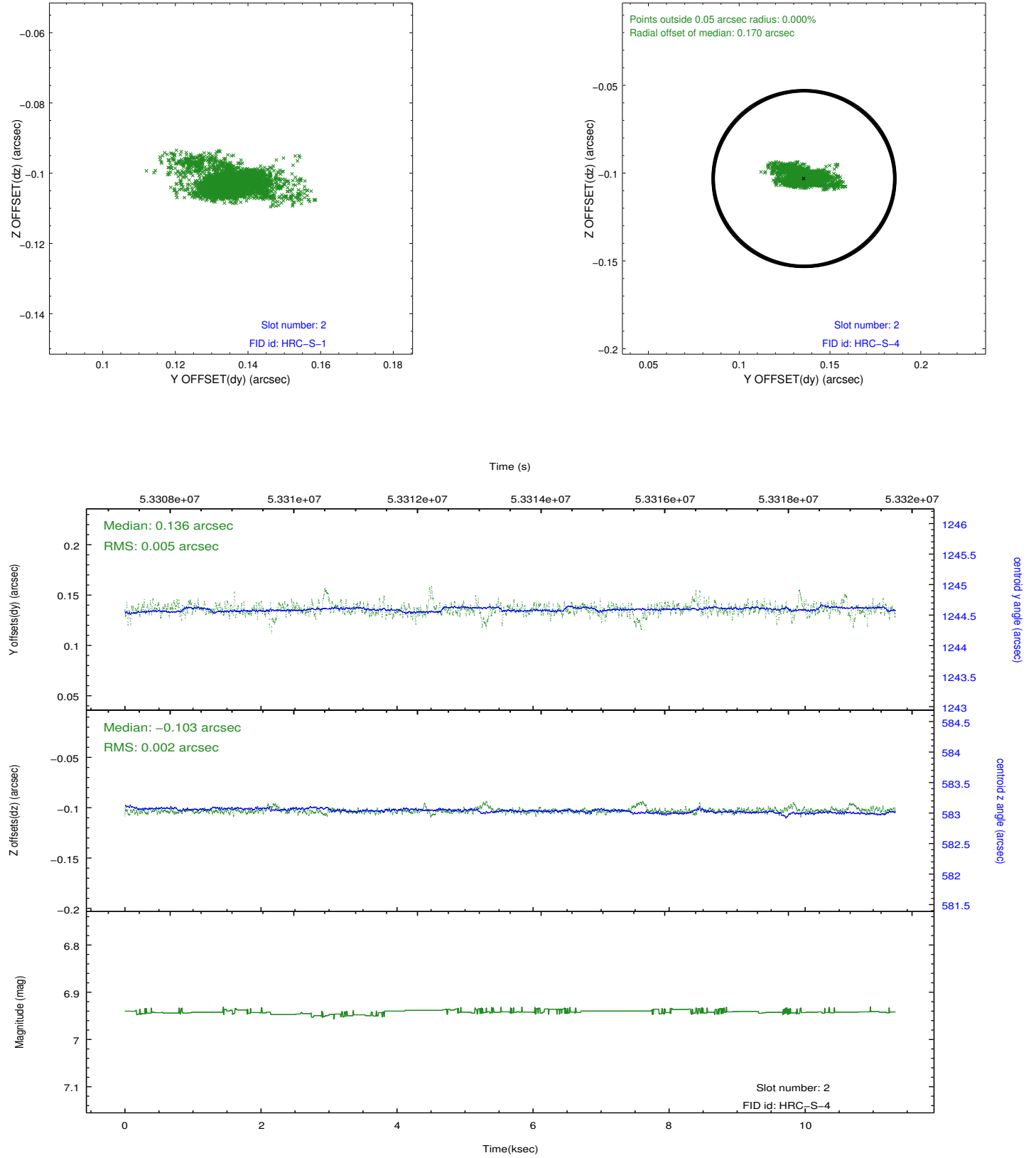
2.5.1 Slot 0



2.5.2 Slot 1

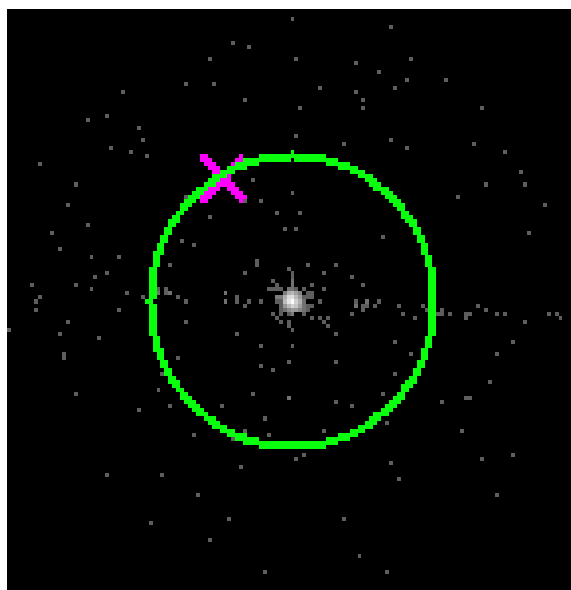


2.5.3 Slot 2

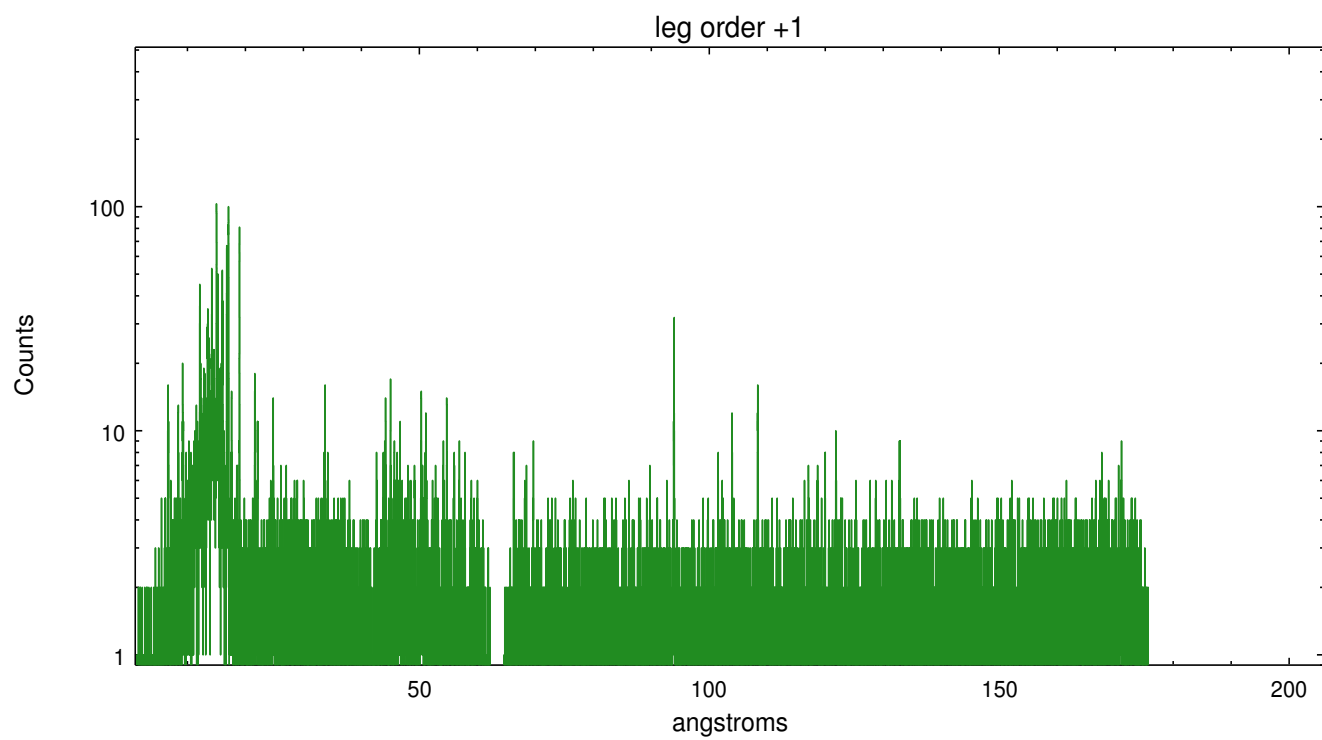
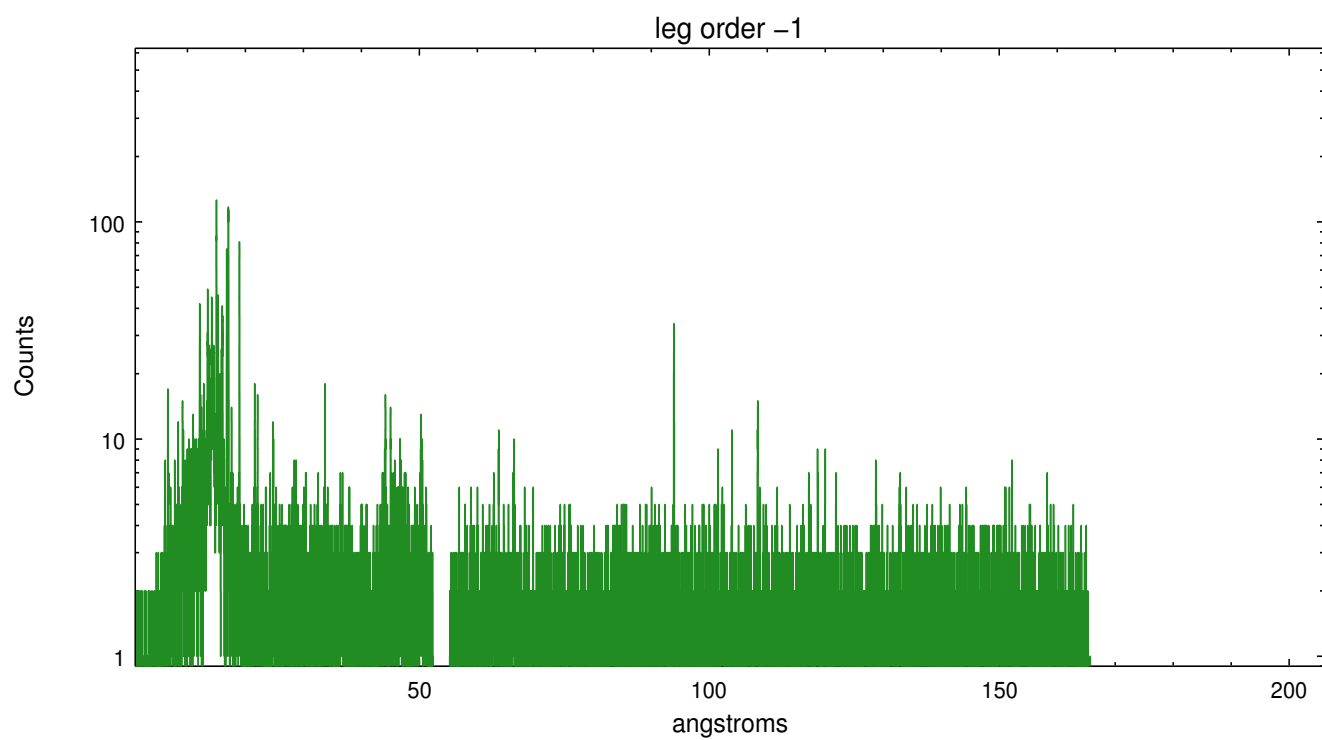


3 Gratings

3.1 LETG Arm



LETG Zero Order



A Summary

A.1 Status

V&V Scientist	Joy Nichols
V&V Date (YYYY-MM-DD)	2010.05.13
V&V Edition	1
V&V Disposition and Status	OK
V&V Charge Time	11.32

A.2 Comments

HRC-S/LETG focus plate measurement.