

# V&V Reference Report

## L2 ASCDS Version : 8.4.5

Observation 61610 - L2 Version 3  
Chandra X-Ray Center

L2 Processing Date : Sep 17 2012

## Contents

<b>1</b>	<b>Front</b>	<b>2</b>
<b>2</b>	<b>OBI</b>	<b>3</b>
2.1	OBI . . . . .	3
2.1.1	Images . . . . .	3
2.1.2	Bias . . . . .	3
2.1.3	Parameters . . . . .	4
2.1.4	Events . . . . .	4
2.2	Compared Parameters . . . . .	5
2.3	Star Slots . . . . .	6
2.4	FID Slots . . . . .	6
<b>A</b>	<b>Summary</b>	<b>7</b>
A.1	Status . . . . .	7
A.2	Comments . . . . .	7

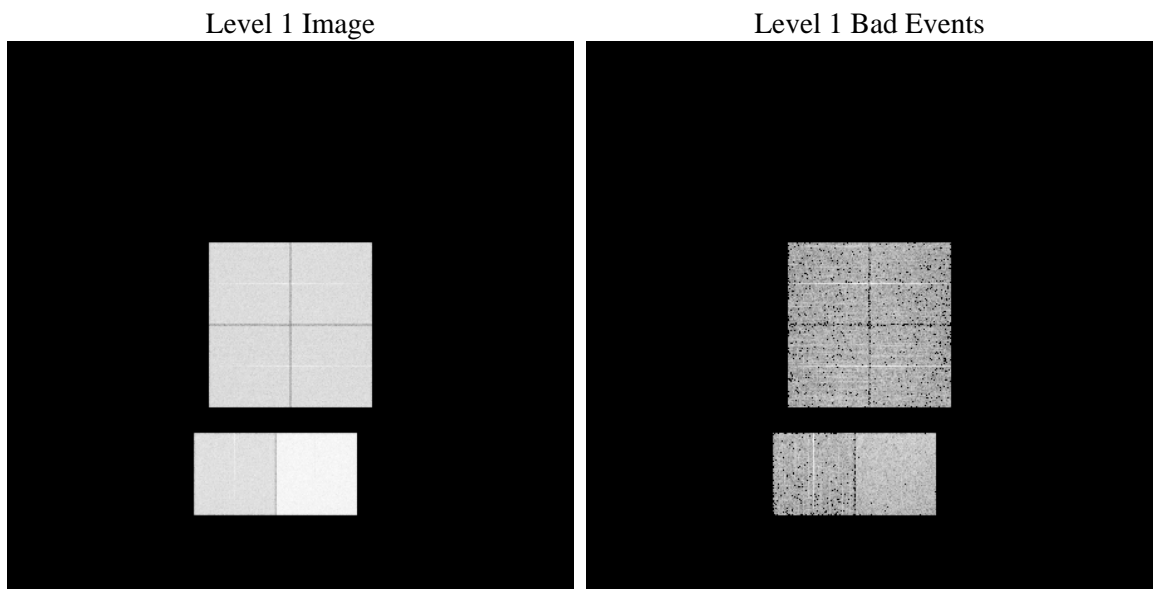
# 1 Front

seq_num	&#160	Sequence number
obs_id	61610	Observation id
title	ACIS-012367 diagnostics	Proposal title
observer	CHANDRA engineering request/realtime commanding	Principal investig
object	&#160	Source name
dtycle	0	&#160
cycle	P	events from which exps? Prim/Second/Both
ra_targ	0.0	Observer's specified target RA [deg]
dec_targ	0.0	Observer's specified target Dec [deg]
ra_nom	210.00162072065	Nominal RA [deg]
dec_nom	-4.028614479255	Nominal Dec [deg]
roll_nom	240.52708414528	Nominal Roll [deg]
revision	3	Processing version of data
ontime	6446.0949040502	Sum of GTIs [s]
livetime	6364.4705690028	Livetime [s]
ontime0	2623.8667933941	Sum of GTIs [s]
ontime1	2683.3087337464	Sum of GTIs [s]
ontime2	2466.1597120166	Sum of GTIs [s]
ontime3	2563.3906923831	Sum of GTIs [s]
ontime6	2845.3604940772	Sum of GTIs [s]
ontime7	6446.0949040502	Sum of GTIs [s]
l2events	1240486	Number of level 2 events

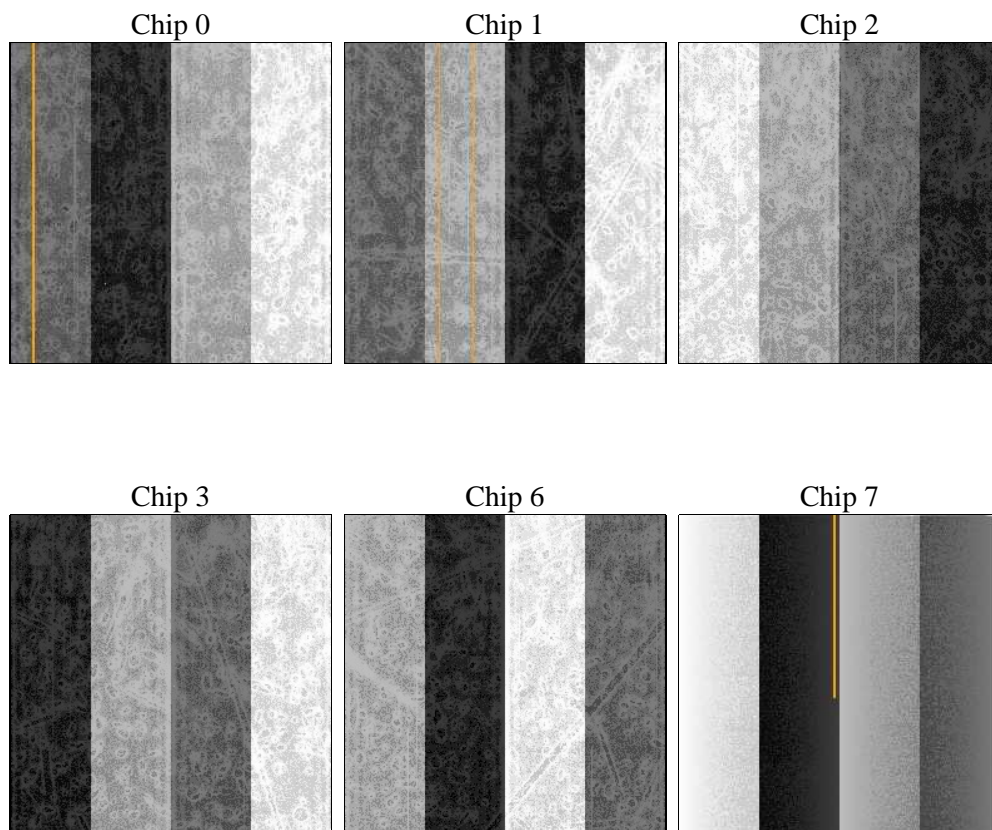
## 2 OBI

### 2.1 OBI

#### 2.1.1 Images



#### 2.1.2 Bias



### 2.1.3 Parameters

obi_num	0	Obi number	sched_exp_time	0.0	[s] Scheduled observation exposure time
ascdsver	8.4.5	Processing system revision	ontime	6446.0949040502	Sum of GTIs [s]
caldsver	4.5.1.1	&#160	ontime0	2623.8667933941	Sum of GTIs [s]
date	2012-09-17T05:18:32	Date and time of file creation	ontime1	2683.3087337464	Sum of GTIs [s]
revision	3	Processing version of data	ontime2	2466.1597120166	Sum of GTIs [s]
			ontime3	2563.3906923831	Sum of GTIs [s]
			ontime6	2845.3604940772	Sum of GTIs [s]
			ontime7	6446.0949040502	Sum of GTIs [s]
			l1events	1427325	Number of level 1 events

### 2.1.4 Events

	ccd 0	ccd 1	ccd 2	ccd 3	ccd 6	ccd 7		ccd 0	ccd 1	ccd 2	ccd 3	ccd 6	ccd 7
level 1 events	187834	191917	181285	187699	214450	464140	grade 0 events	92803	95575	89275	93892	105283	111699
rejected events	19271	18724	21005	20736	21706	33294		49%	49%	49%	50%	49%	24%
rejected %	10%	9%	11%	11%	10%	7%	grade 1 events	427	484	451	516	528	297
								0%	0%	0%	0%	0%	0%
							grade 2 events	30039	30583	28255	29316	33888	95787
								15%	15%	15%	15%	15%	20%
							grade 3 events	10755	10972	10016	10439	11826	44506
								5%	5%	5%	5%	5%	9%
							grade 4 events	10630	10998	10056	10423	11933	43536
								5%	5%	5%	5%	5%	9%
							grade 5 events	1468	1473	1365	1403	1689	6976
								0%	0%	0%	0%	0%	1%
							grade 6 events	24336	25277	22906	23096	30005	135539
								12%	13%	12%	12%	13%	29%
							grade 7 events	17376	16555	18961	18614	19298	25800
								9%	8%	10%	9%	8%	5%

## 2.2 Compared Parameters

Parameter	Planned	Actual	Parameter	Planned	Actual
Instrument	ACIS	ACIS	Obspar format version number	7	7
Detector	ACIS-012367	ACIS-012367	Obspar file type	PREDICTED	ACTUAL
Grating	NONE	NONE	Obspar update status	NONE	UPDATED
Data mode	FAINT	FAINT	On-chip summing requested	N	N
Observation mode	SECONDARY	SECONDARY	Subarray requested	NONE	NONE
[deg] Pointing RA	0	210.0016207206463	Alternating exposures requested	N	N
[deg] Pointing Dec	0	-4.02861447925498	[s] Primary exposure time	0.000000	3.2
[deg] Pointing Roll	0.0	240.5270841452781			
[mm] SIM focus pos	-0.782348	-0.6828225247311905			
[mm] SIM defocus	0	0.8505141146731063			
[mm] SIM translation stage pos	-233.592463	250.466033080201			
[mm] SIM translation stage offset	0	-0.01005468664627074			
[s] Observation start time (MET)	107594314.506	107594313.73741			
Observation start date	2001-05-30T07:18:35	2001-05-30T07:18:33			
[s] Observation end time (MET)	107604406.656	107604405.8878			
Observation end date	2001-05-30T10:06:47	2001-05-30T10:06:45			
Read mode	TIMED	TIMED			

## 2.3 Star Slots

## 2.4 FID Slots

## A Summary

### A.1 Status

V&V Scientist	Beth Sundheim
V&V Date (YYYY-MM-DD)	2012.09.19
V&V Edition	1
V&V Disposition and Status	OK
V&V Charge Time	6.4460949040502

### A.2 Comments