

V&V Reference Report

L2 ASCDS Version : 8.5.1.1

Observation 6160 - L2 Version 3
Chandra X-Ray Center

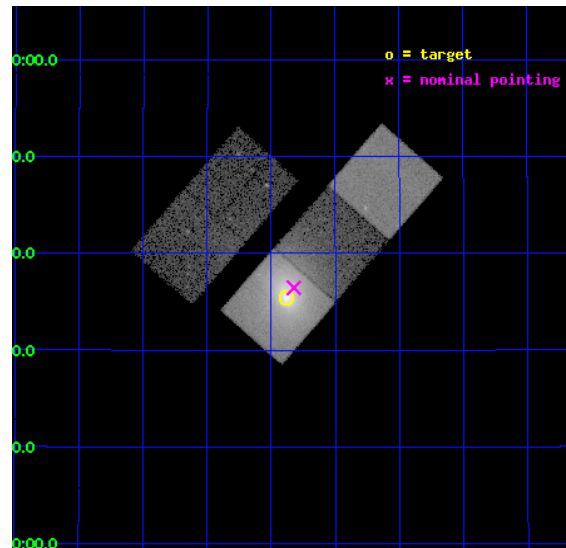
L2 Processing Date : Dec 20 2012

Contents

1	Front	2
2	OBI	3
2.1	OBI	3
2.1.1	Images	3
2.1.2	Bias	3
2.1.3	Parameters	4
2.1.4	Events	4
2.2	Compared Parameters	5
2.3	Aspect	6
2.4	Star Slots	9
2.4.1	Slot 3	9
2.4.2	Slot 4	10
2.4.3	Slot 5	11
2.4.4	Slot 6	12
2.4.5	Slot 7	13
2.5	FID Slots	14
2.5.1	Slot 0	14
2.5.2	Slot 1	15
2.5.3	Slot 2	16
A	Summary	17
A.1	Status	17
A.2	Comments	17

1 Front

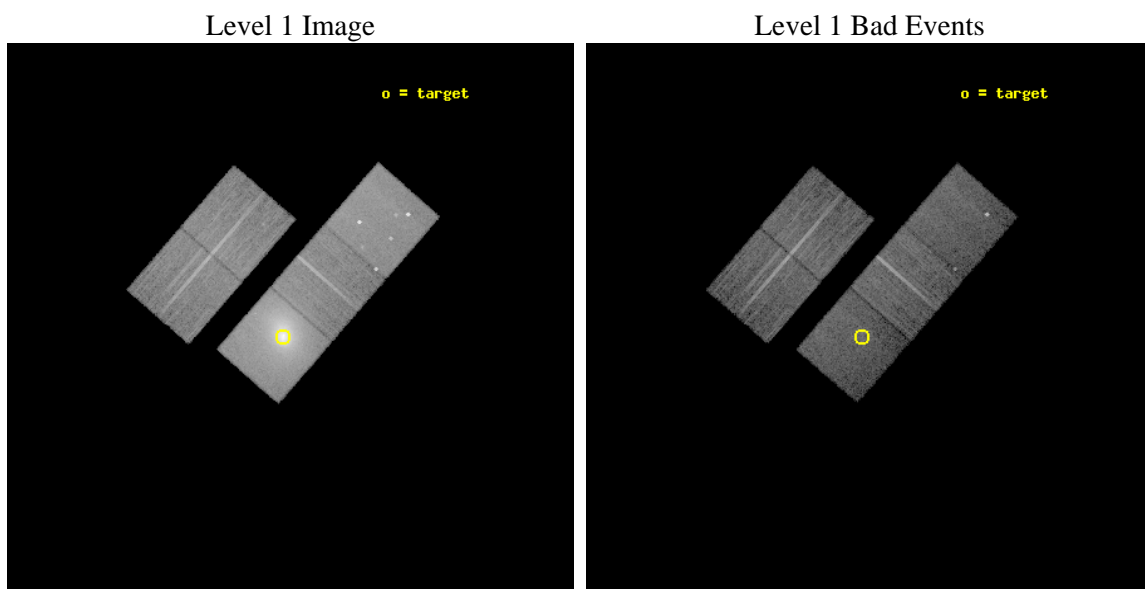
seq_num	890032	Sequence number
obs_id	6160	Observation id
title	Monitoring the Spatial Variation of the ACIS Contaminant with Abell 1795	Proposal title
observer	Dr. CXC Calibration	Principal investigator
object	A1795	Source name
dtcycle	0	
cycle	P	events from which exps? Prim/Second/Both
ra_targ	207.219583	Observer's specified target RA [deg]
dec_targ	26.590833	Observer's specified target Dec [deg]
ra_nom	207.20583241523	Nominal RA [deg]
dec_nom	26.607553176457	Nominal Dec [deg]
roll_nom	131.08240291738	Nominal Roll [deg]
revision	3	Processing version of data
ontime	15040.784702957	Sum of GTIs [s]
livetime	14844.265777948	Livetime [s]
ontime2	15040.620542943	Sum of GTIs [s]
ontime3	15037.520592719	Sum of GTIs [s]
ontime5	15040.743662953	Sum of GTIs [s]
ontime6	15040.70262295	Sum of GTIs [s]
ontime7	15040.784702957	Sum of GTIs [s]
l2events	319000	Number of level 2 events



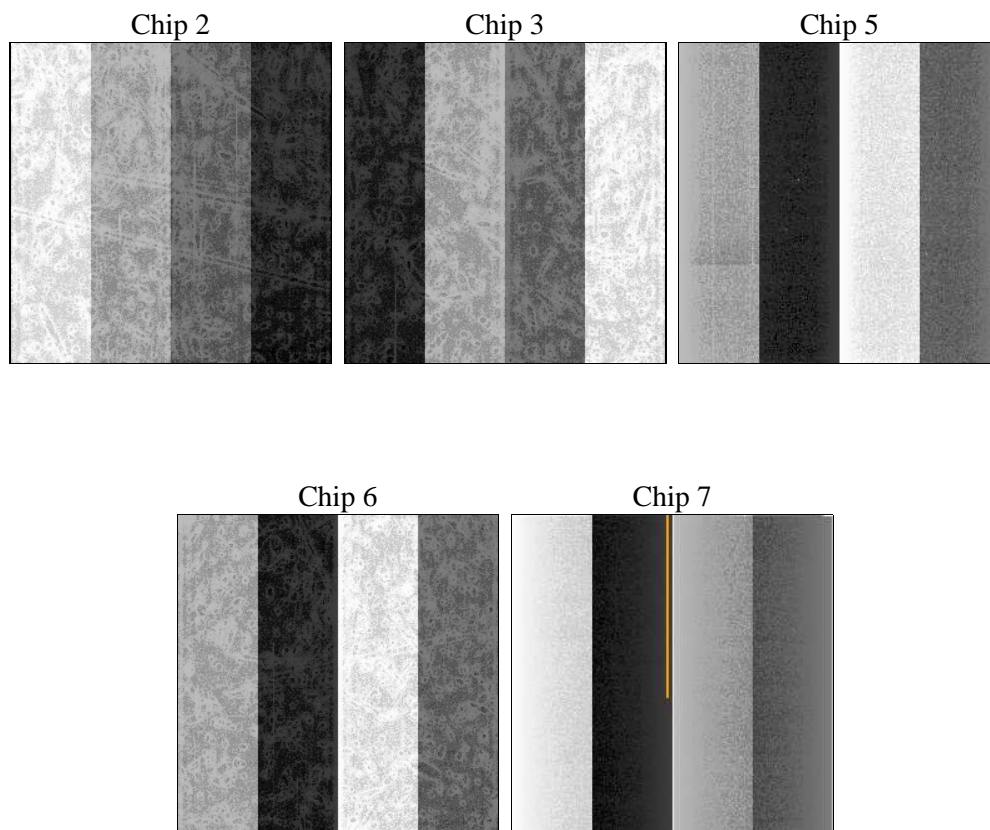
2 OBI

2.1 OBI

2.1.1 Images



2.1.2 Bias



2.1.3 Parameters

obi_num	0	Obi number	sched_exp_time	15000.000000	[s] Scheduled observation exposure time
ascdsver	8.5.1.1	Processing system revision	ontime	15040.784702957	Sum of GTIs [s]
caldsver	4.5.5	 	ontime2	15040.620542943	Sum of GTIs [s]
date	2012-12-20T19:05:26	Date and time of file creation	ontime3	15037.520592719	Sum of GTIs [s]
revision	3	Processing version of data	ontime5	15040.743662953	Sum of GTIs [s]
			ontime6	15040.70262295	Sum of GTIs [s]
			ontime7	15040.784702957	Sum of GTIs [s]
			l1events	714919	Number of level 1 events

2.1.4 Events

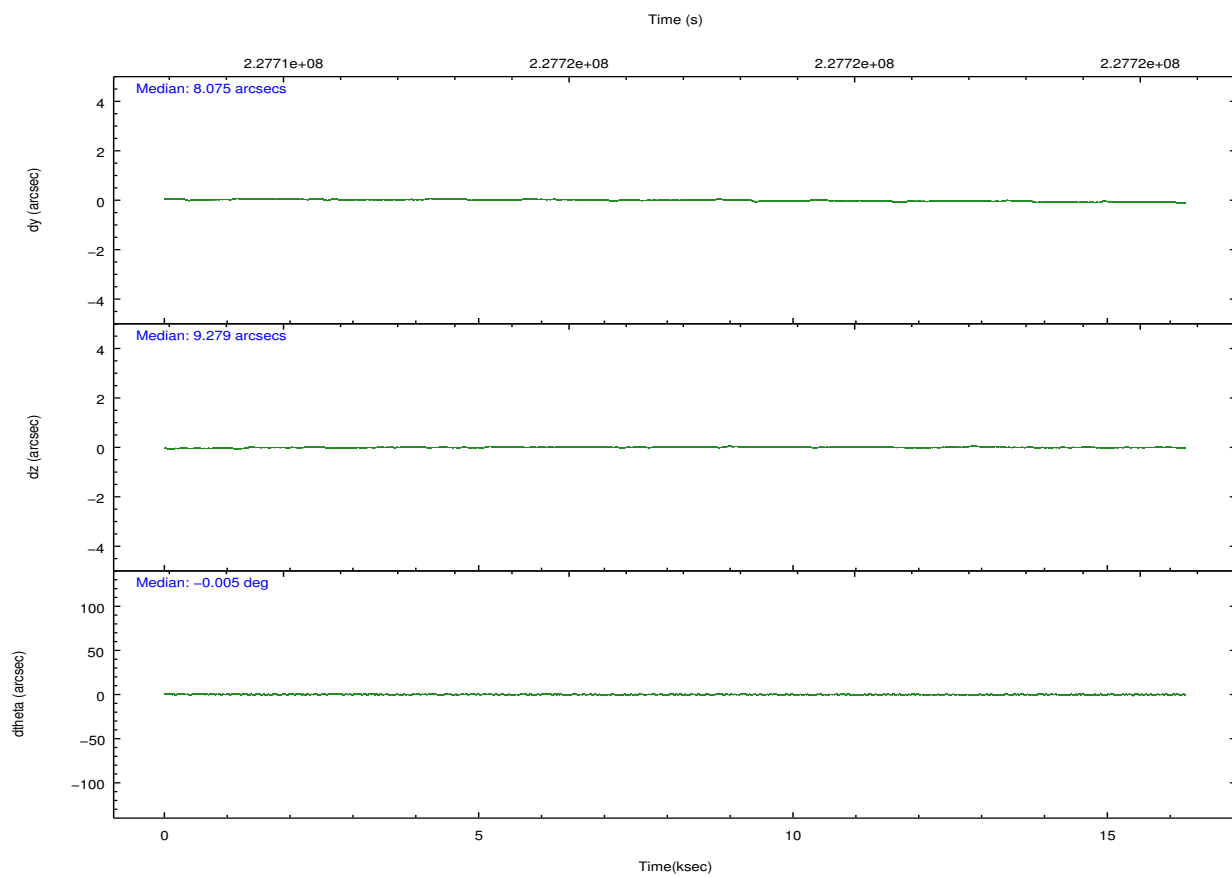
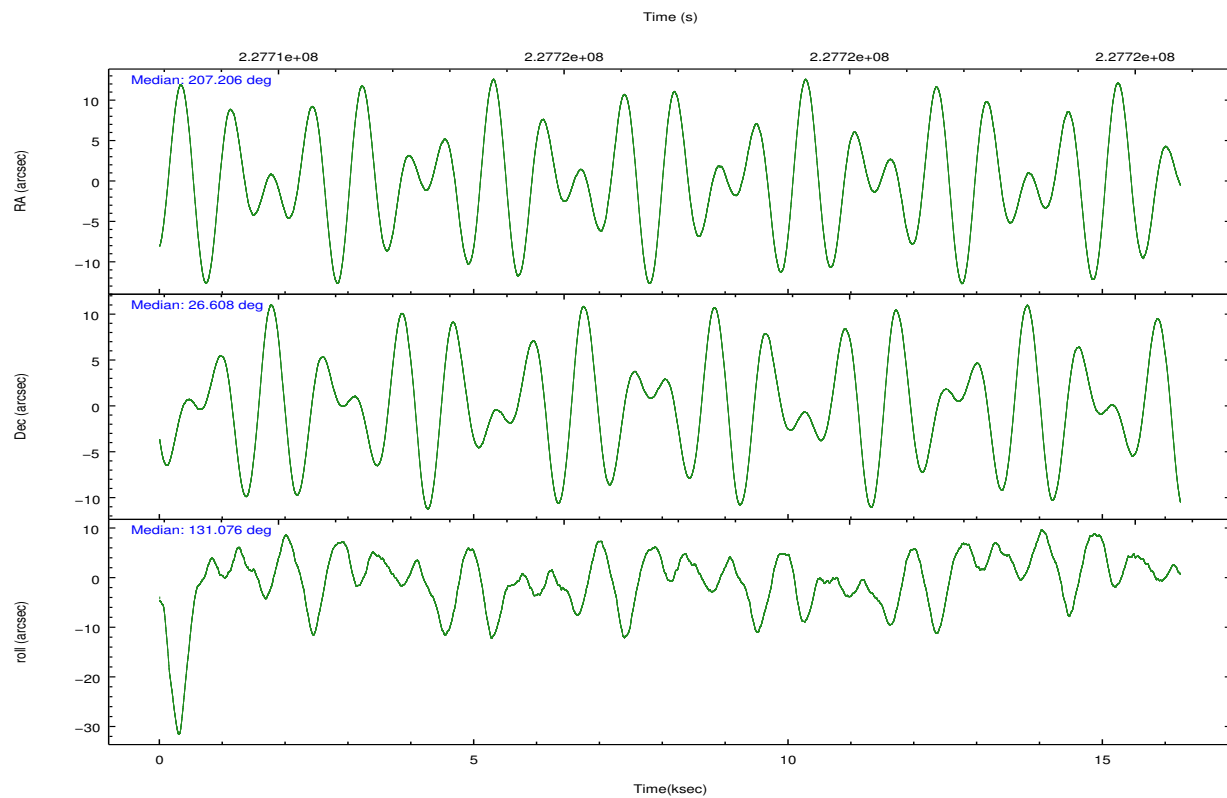
	ccd 2	ccd 3	ccd 5	ccd 6	ccd 7
level 1 events	98864	90944	136127	103712	285272
rejected events	88509	80816	66353	83589	58927
rejected %	89%	88%	48%	80%	20%

	ccd 2	ccd 3	ccd 5	ccd 6	ccd 7
grade 0 events	4384	4229	10485	11990	60857
	4%	4%	7%	11%	21%
grade 1 events	43	63	282	72	158
	0%	0%	0%	0%	0%
grade 2 events	2236	2062	20700	3089	56349
	2%	2%	15%	2%	19%
grade 3 events	1037	1003	2924	1374	24827
	1%	1%	2%	1%	8%
grade 4 events	1049	1074	2846	1387	24667
	1%	1%	2%	1%	8%
grade 5 events	2995	3597	10643	3855	12064
	3%	3%	7%	3%	4%
grade 6 events	1656	1765	32857	2287	59678
	1%	1%	24%	2%	20%
grade 7 events	85464	77151	55390	79658	46672
	86%	84%	40%	76%	16%

2.2 Compared Parameters

Parameter	Planned	Actual	Parameter	Planned	Actual
Instrument	ACIS	ACIS	Obspar format version number	7	7
Detector	ACIS-23567	ACIS-23567	Obspar file type	PREDICTED	ACTUAL
Grating	NONE	NONE	Obspar update status	NONE	UPDATED
Data mode	VFAINT	VFAINT	Number of optional ACIS chips dropped	0	0
Observation mode	POINTING	POINTING	On-chip summing requested	N	N
[deg] Pointing RA	207.234777	207.2058324152263	Subarray requested	NONE	NONE
[deg] Pointing Dec	26.599080	26.6075531764572	Alternating exposures requested	N	N
[deg] Pointing Roll	130.912811	131.0824029173823	[s] Primary exposure time	0.000000	3.1
[mm] SIM focus pos	-0.684267	-0.6828225247311905			
[mm] SIM defocus	0	0.001444936568705701			
[mm] SIM translation stage pos	-190.132523	-190.145094680475			
[mm] SIM translation stage offset	0	0.01257209746719923			
[s] Observation start time (MET)	227709979.184000	227708517.41874			
Observation start date	2005-03-20T12:45:15	2005-03-20T12:21:57			
[s] Observation end time (MET)	227724979.184000	227725669.76952			
Observation end date	2005-03-20T16:55:15	2005-03-20T17:07:49			
Read mode	TIMED	TIMED			

2.3 Aspect

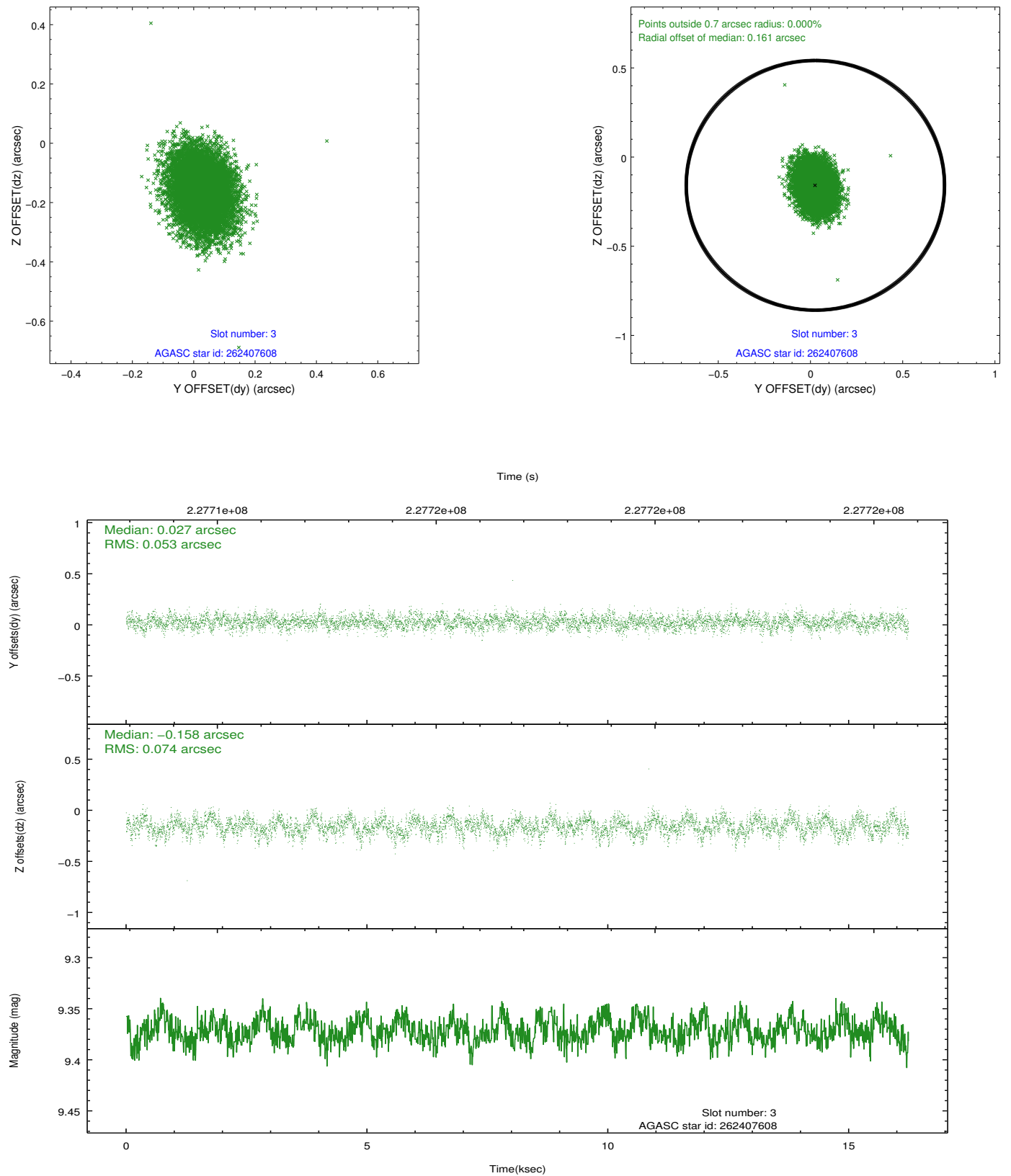


Slot Statistics

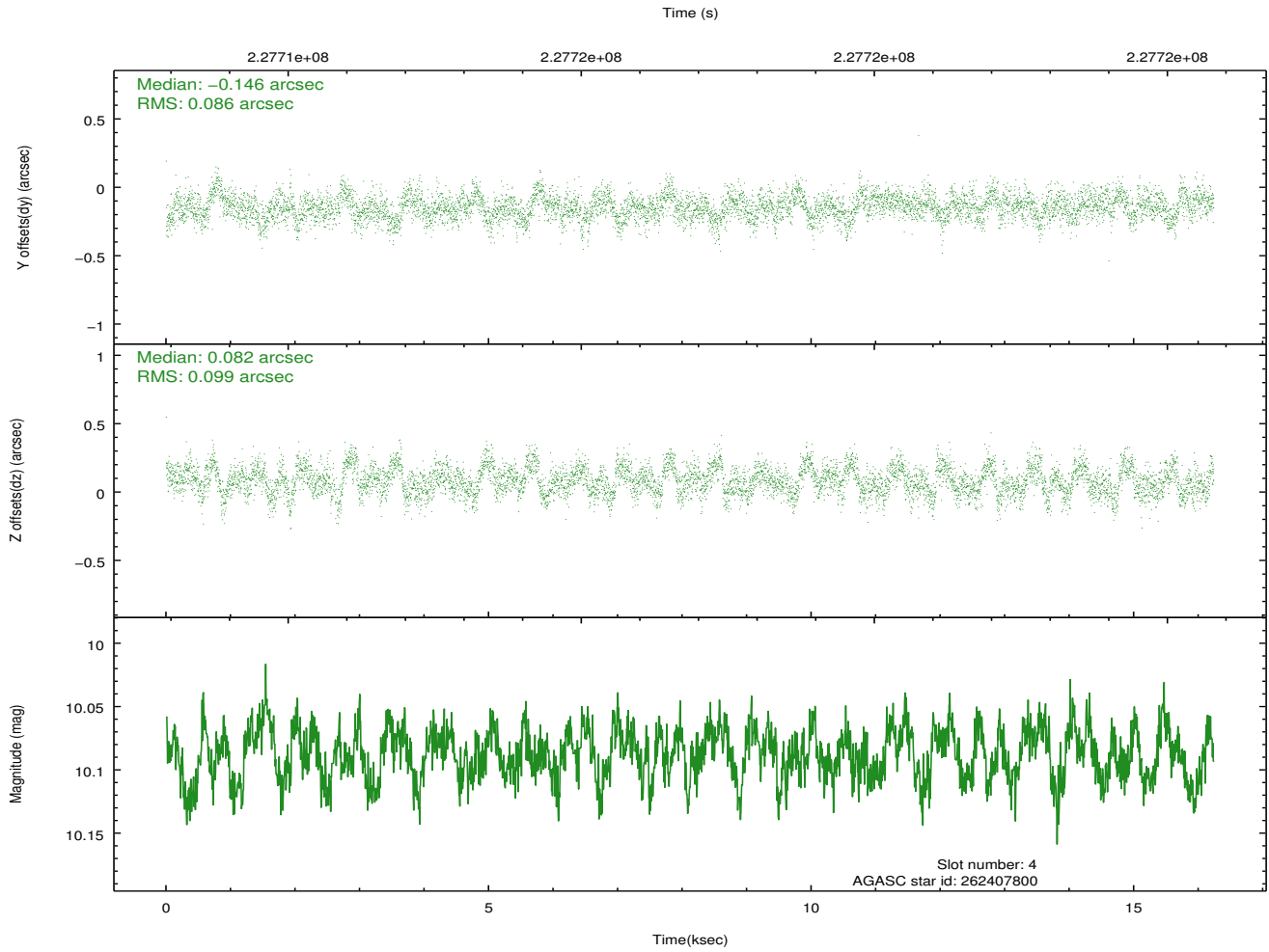
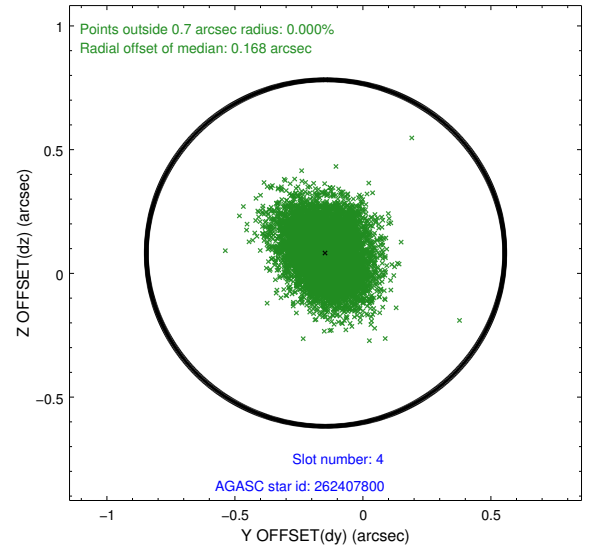
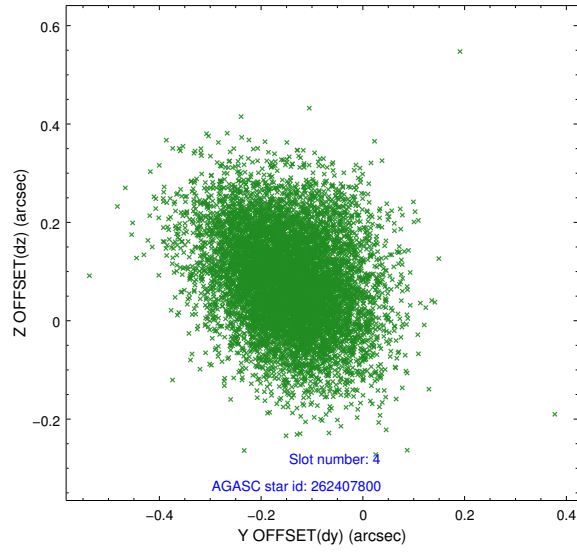
slot	status	id	mag	n_pts	med_dy	med_dz	dr1	dr2	ra	dec	mean_y	mean_z
0	FID	ACIS-S-2	7.11	3961	-0.028	-0.042	0.007	0.011	0.000000	0.000000	-760.85	-1730.45
1	FID	ACIS-S-4	7.20	3961	0.108	0.025	0.006	0.010	0.000000	0.000000	2152.42	177.86
2	FID	ACIS-S-5	7.24	3961	-0.112	0.027	0.007	0.011	0.000000	0.000000	-1813.46	171.79
3	GUIDE	262407608	9.37	7919	0.027	-0.158	0.096	0.160	207.378401	26.435507	-747.70	35.58
4	GUIDE	262407800	10.09	7866	-0.146	0.082	0.139	0.230	207.321181	27.251762	1595.50	-1746.52
5	GUIDE	262408096	9.35	7917	-0.017	-0.059	0.114	0.176	207.011678	26.515421	244.18	740.04
6	GUIDE	262408936	9.65	7909	0.050	0.152	0.107	0.182	207.154731	26.726554	515.77	-105.56
7	GUIDE	262411960	9.68	7910	0.077	-0.021	0.132	0.218	207.327895	25.881727	-2148.72	1463.31

2.4 Star Slots

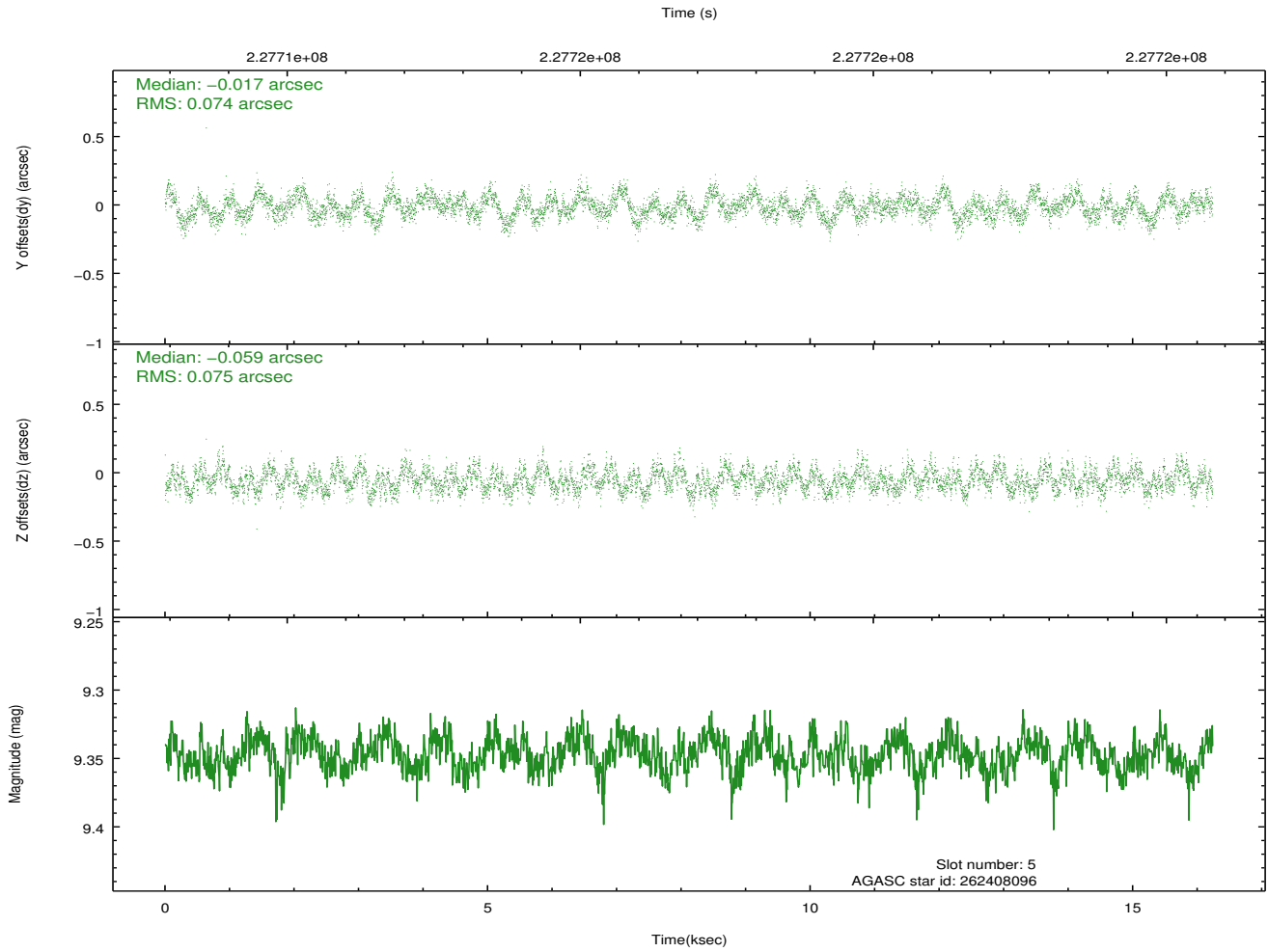
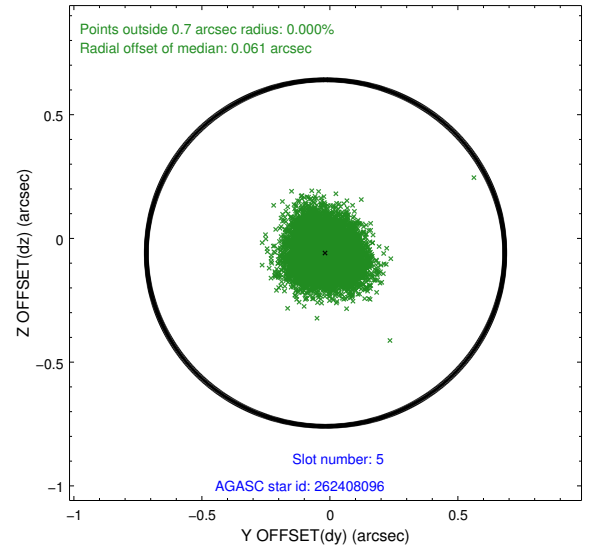
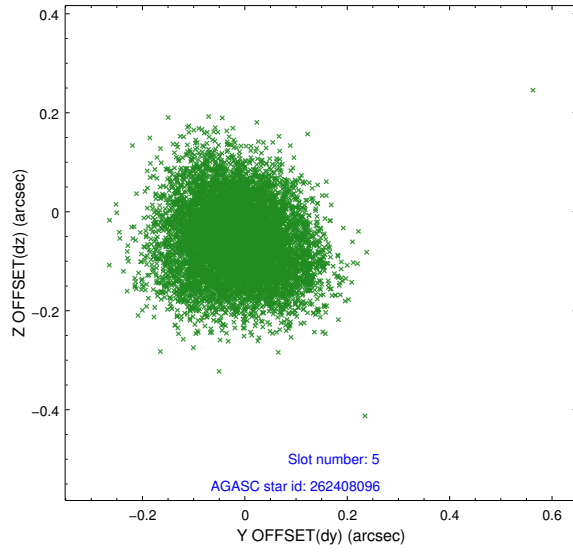
2.4.1 Slot 3



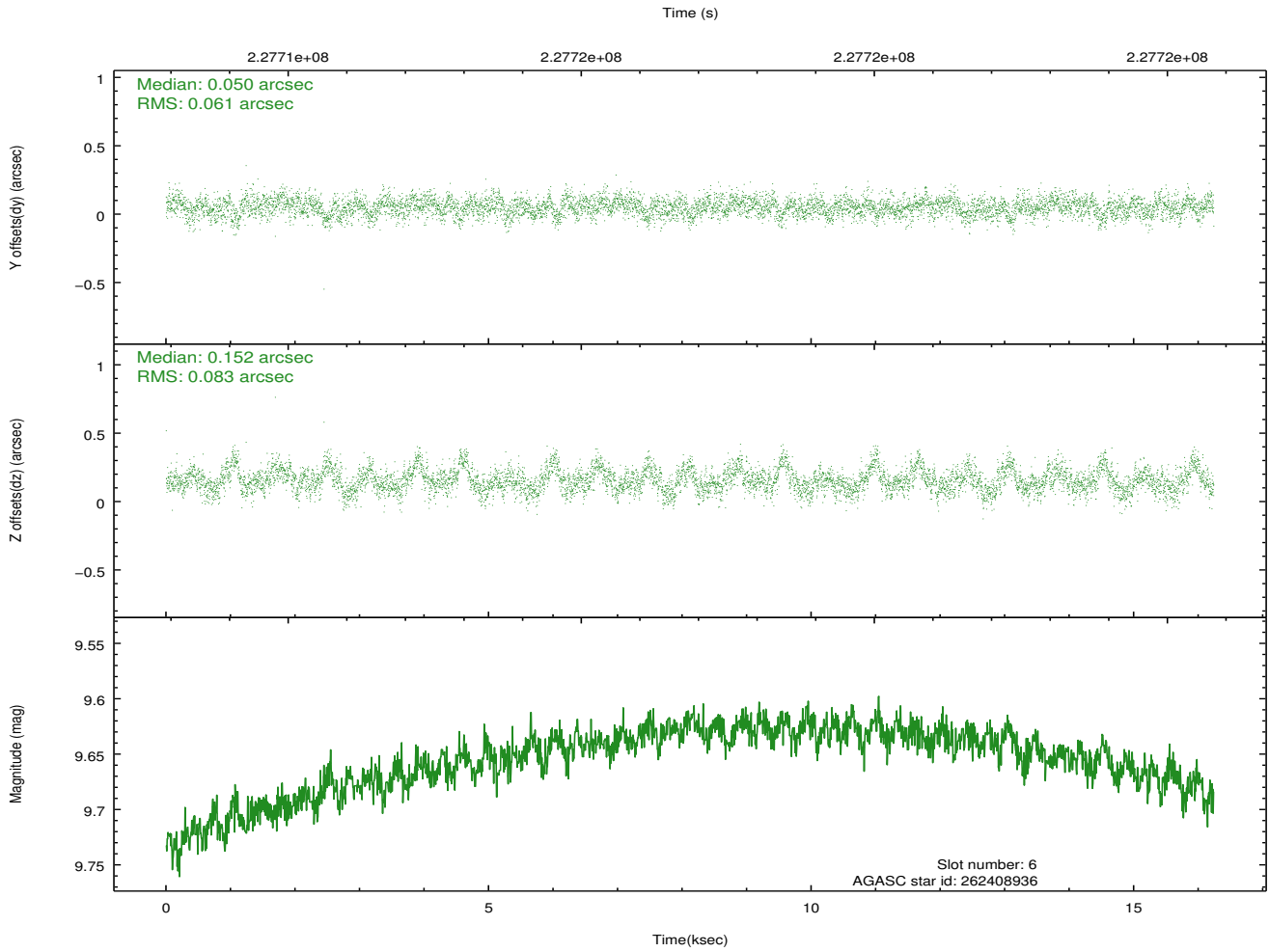
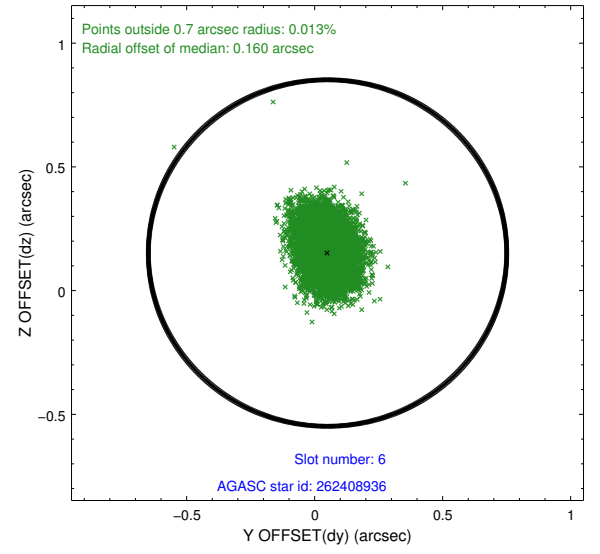
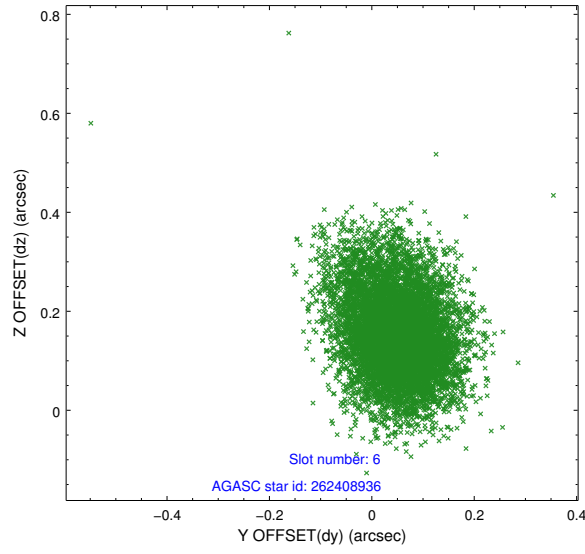
2.4.2 Slot 4



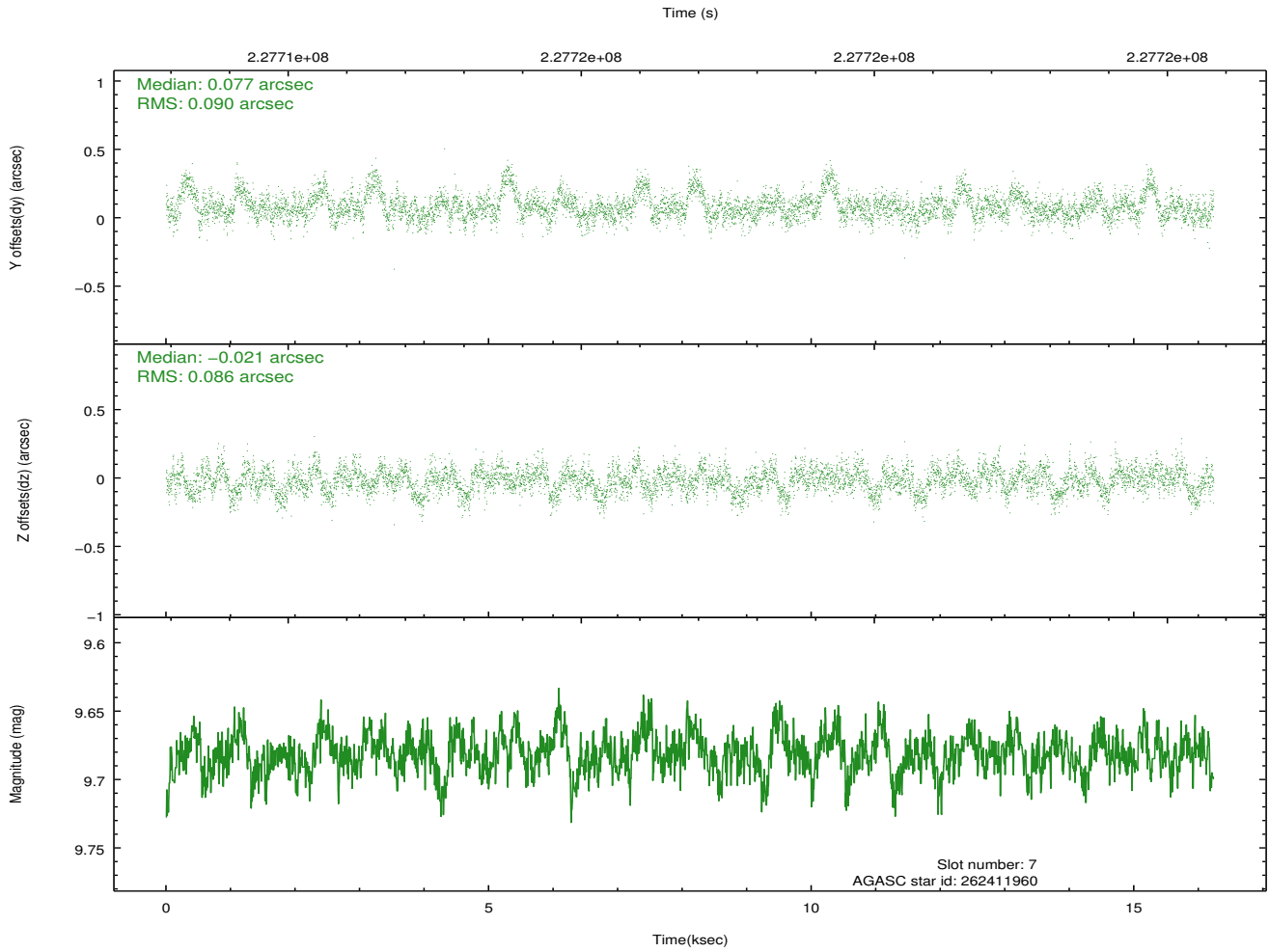
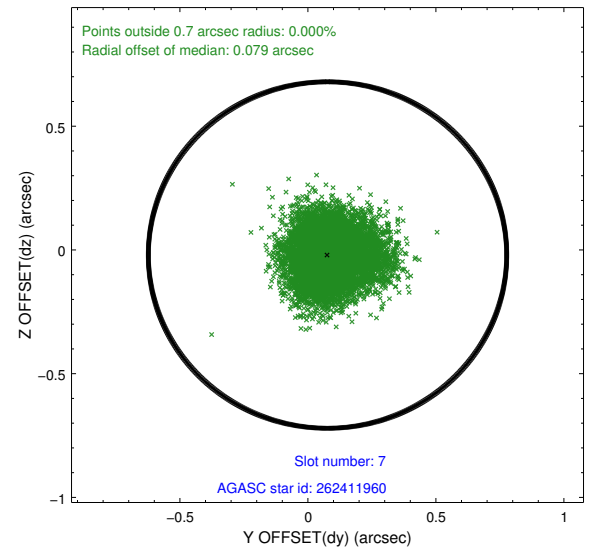
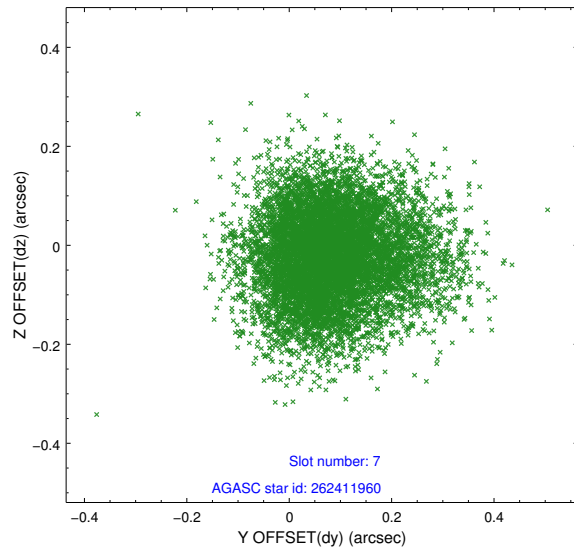
2.4.3 Slot 5



2.4.4 Slot 6

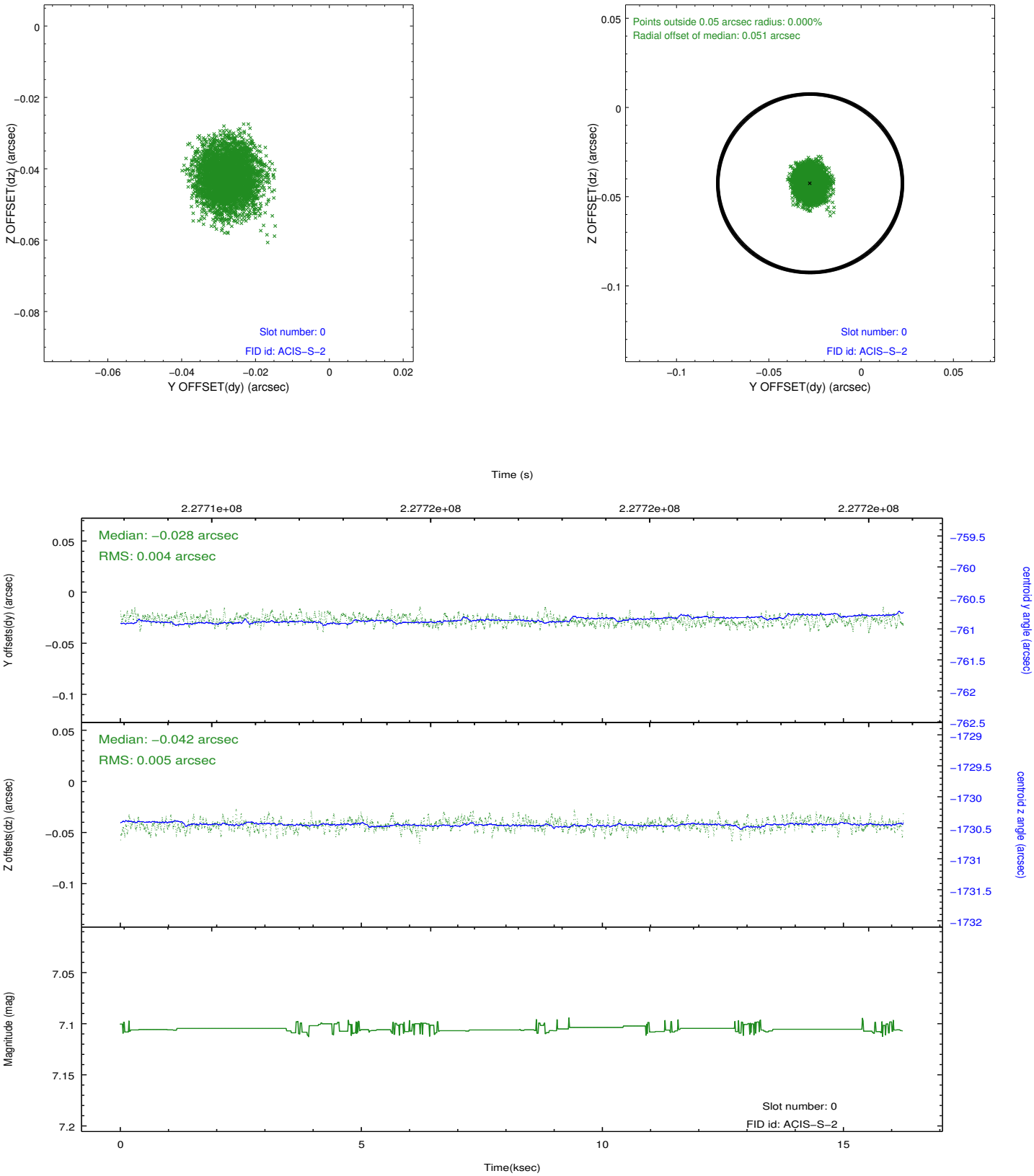


2.4.5 Slot 7

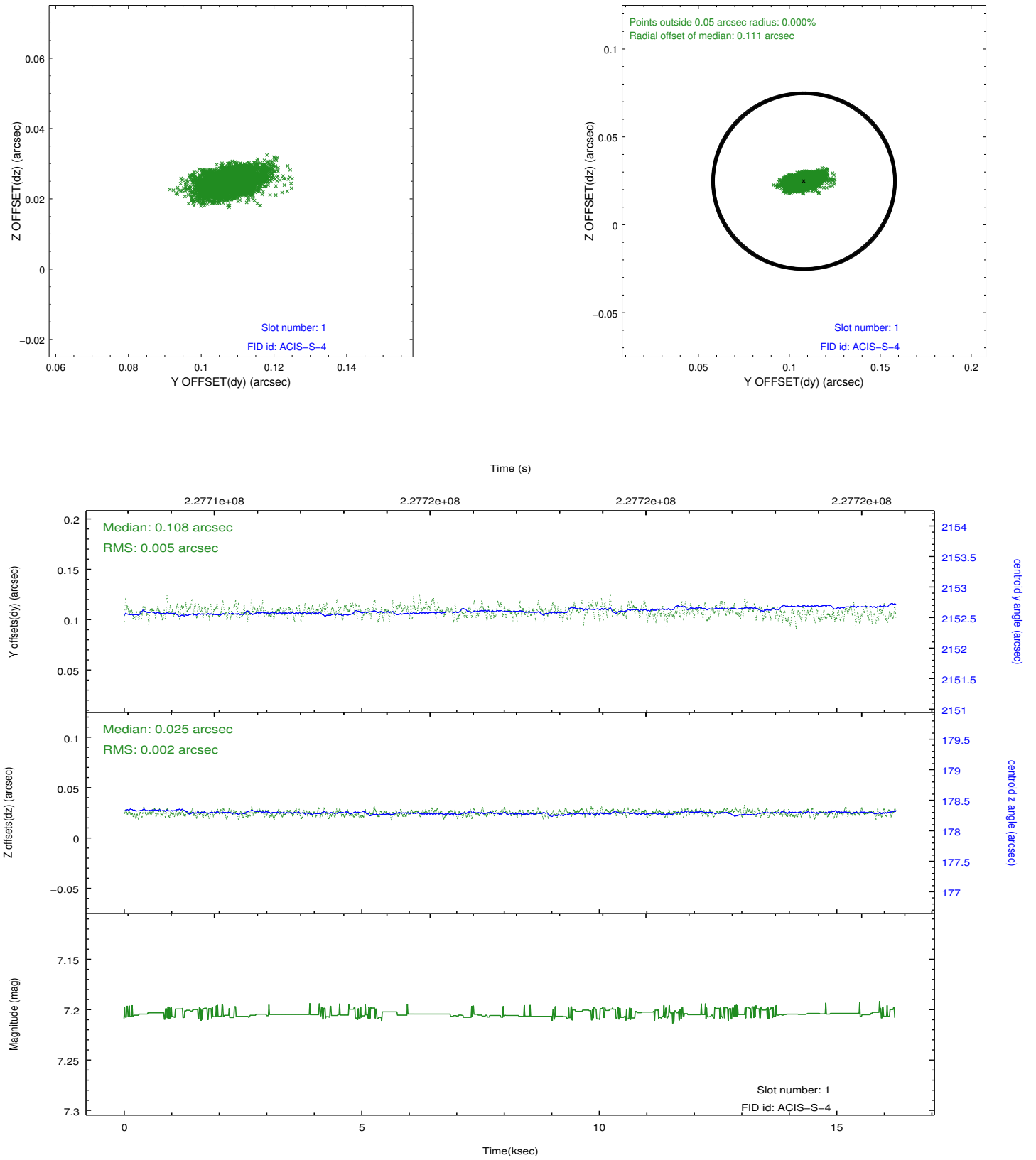


2.5 FID Slots

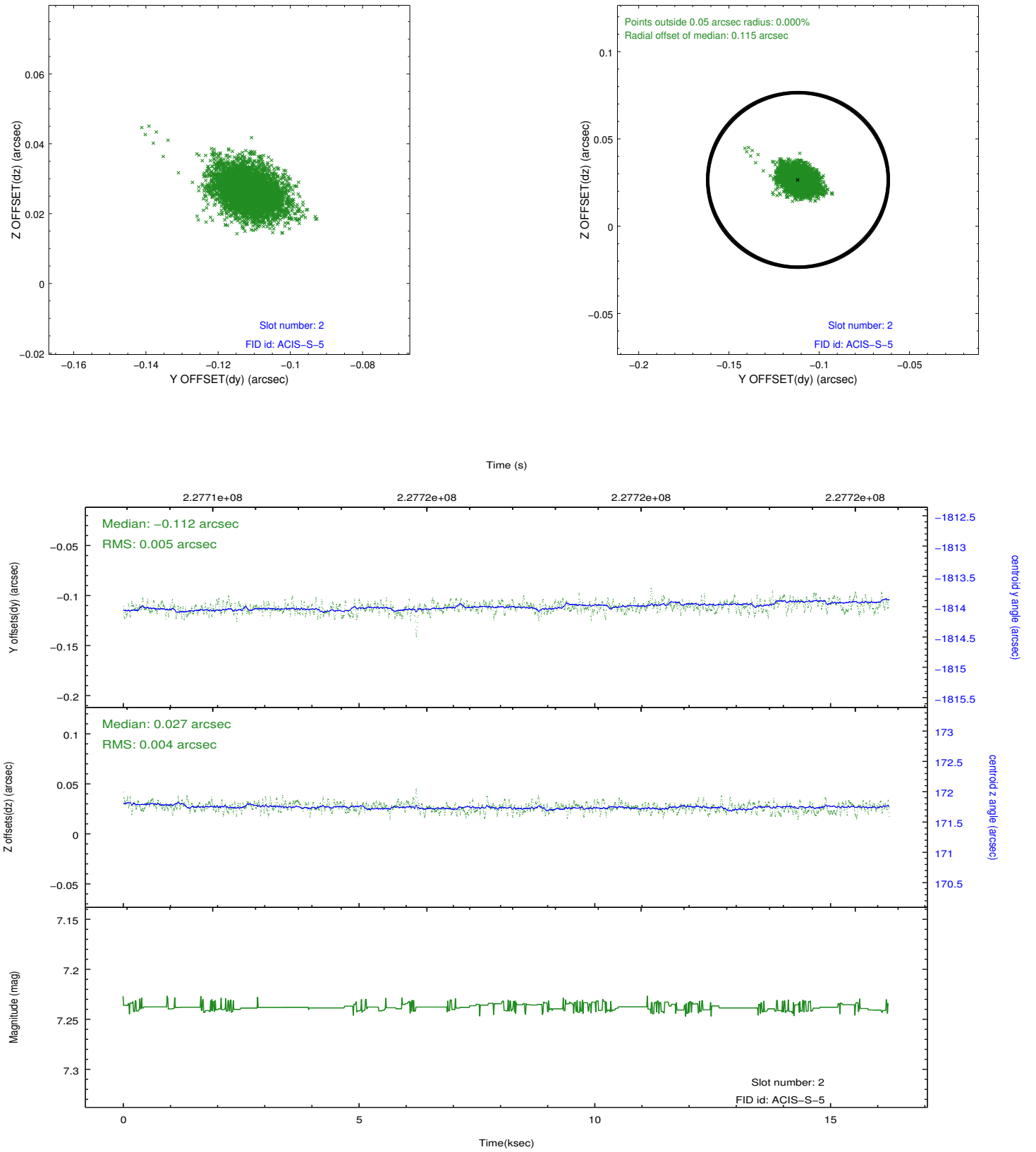
2.5.1 Slot 0



2.5.2 Slot 1



2.5.3 Slot 2



A Summary

A.1 Status

V&V Scientist	Jen Lauer
V&V Date (YYYY-MM-DD)	2013.01.14
V&V Edition	1
V&V Disposition and Status	OK
V&V Charge Time	15.04119

A.2 Comments